

Data Path : Z:\svoasrv\HPCHEM1\BNA_G\Data\BG102823\
 Data File : BG059525.D
 Acq On : 28 Oct 2023 17:15
 Operator : MA/JU
 Sample : 04925-03MSD
 Misc :
 ALS Vial : 11 Sample Multiplier: 1

Instrument :
 BNA_G
 ClientSampleId :
 GCCW9MSD

Quant Time: Oct 30 02:14:44 2023
 Quant Method : Z:\svoasrv\HPCHEM1\BNA_G\Methods\SFAM-EPA-BG102723.MA.M
 Quant Title : SVOA CALIBRATION
 QLast Update : Sat Oct 28 03:56:42 2023
 Response via : Initial Calibration

Compound	R.T.	QIon	Response	Conc	Units	Dev(Min)
Internal Standards						
1) 1,4-Dichlorobenzene-d4	8.364	152	77072	20.000	ng/ul	0.00
20) Naphthalene-d8	11.208	136	332652	20.000	ng/ul	0.00
38) Acenaphthene-d10	14.992	164	206638	20.000	ng/ul	0.00
64) Phenanthrene-d10	17.742	188	428583	20.000	ng/ul	0.00
79) Chrysene-d12	22.078	240	363778	20.000	ng/ul	0.00
88) Perylene-d12	25.685	264	393166	20.000	ng/ul	0.00
System Monitoring Compounds						
3) 1,4-Dioxane-d8	3.658	96	6250	3.034	ng/uL	0.00
4) Pyridine-d5	4.093	84	12729	2.211	ng/ul	0.00
7) Phenol-d5	7.471	99	157676	19.909	ng/ul	0.00
9) Bis-(2-Chloroethyl)eth...	7.683	67	73939	20.325	ng/ul	0.00
11) 2-Chlorophenol-d4	7.877	132	133538	20.783	ng/ul	0.00
15) 4-Methylphenol-d8	9.046	113	114234	18.180	ng/ul	0.00
21) Nitrobenzene-d5	9.557	128	55743	23.567	ng/ul	0.00
24) 2-Nitrophenol-d4	10.274	143	59044	24.316	ng/ul	-0.01
28) 2,4-Dichlorophenol-d3	10.803	165	127918	23.911	ng/ul	0.00
31) 4-Chloroaniline-d4	11.349	131	121087	13.749	ng/ul	0.00
46) Dimethylphthalate-d6	14.387	166	383771	20.500	ng/ul	0.00
49) Acenaphthylene-d8	14.692	160	464431	21.139	ng/ul	0.00
54) 4-Nitrophenol-d4	15.150	143	73186	22.797	ng/ul	0.00
60) Fluorene-d10	15.979	176	339005	21.189	ng/ul	0.00
65) 4,6-Dinitro-2-methylph...	16.079	200	47552	23.429	ng/ul	0.00
73) Anthracene-d10	17.742	188	428583	18.458	ng/ul	-0.10
81) Pyrene-d10	20.109	212	560235	22.156	ng/ul	0.00
92) Benzo(a)pyrene-d12	25.438	264	500417	21.615	ng/ul	0.00
Target Compounds						
6) Benzaldehyde	7.506	77	90991	25.507	ng/ul	98
8) Phenol	7.495	94	197574	26.461	ng/ul	94
10) Bis(2-Chloroethyl)ether	7.777	93	141829	25.903	ng/ul	93
12) 2-Chlorophenol	7.906	128	153026	24.023	ng/ul	95
13) 2-Methylphenol	8.776	108	145773	23.420	ng/ul	97
14) 2,2'-oxybis(1-Chloropr...	8.870	45	63807	12.383	ng/ul#	90
16) Acetophenone	9.204	105	297280	30.014	ng/ul	97
17) N-Nitroso-di-n-propyla...	9.169	70	105741	22.657	ng/ul#	96
18) 4-Methylphenol	9.105	108	153105	23.118	ng/ul	94
19) Hexachloroethane	9.451	117	63047	24.920	ng/ul#	74
22) Nitrobenzene	9.604	77	145375	28.475	ng/ul	98
23) Isophorone	10.109	82	320006	24.890	ng/ul#	92
25) 2-Nitrophenol	10.309	139	75655	28.971	ng/ul#	73
26) 2,4-Dimethylphenol	10.333	107	90329	13.150	ng/ul	90
27) Bis(2-Chloroethoxy)met...	10.597	93	176228	24.617	ng/ul	97
29) 2,4-Dichlorophenol	10.832	162	135139	26.110	ng/ul	90
30) Naphthalene	11.261	128	518866	25.025	ng/ul#	98
32) 4-Chloroaniline	11.378	127	144287	17.248	ng/ul	100
33) Hexachlorobutadiene	11.496	225	77278	24.888	ng/ul	94
34) Caprolactam	12.148	113	48962	25.859	ng/ul	91
35) 4-Chloro-3-methylphenol	12.436	107	173221	28.050	ng/ul	96
36) 2-Methylnaphthalene	12.841	142	368510	25.835	ng/ul	91
37) 1-Methylnaphthalene	13.059	142	365306	25.712	ng/ul	97
39) 1,2,4,5-Tetrachloroben...	13.176	216	153258	25.714	ng/ul	97

Data Path : Z:\svoasrv\HPCHEM1\BNA_G\Data\BG102823\
 Data File : BG059525.D
 Acq On : 28 Oct 2023 17:15
 Operator : MA/JU
 Sample : 04925-03MSD
 Misc :
 ALS Vial : 11 Sample Multiplier: 1

Instrument :
 BNA_G
 ClientSampleId :
 GCCW9MSD

Quant Time: Oct 30 02:14:44 2023
 Quant Method : Z:\svoasrv\HPCHEM1\BNA_G\Methods\SFAM-EPA-BG102723.MA.M
 Quant Title : SVOA CALIBRATION
 QLast Update : Sat Oct 28 03:56:42 2023
 Response via : Initial Calibration

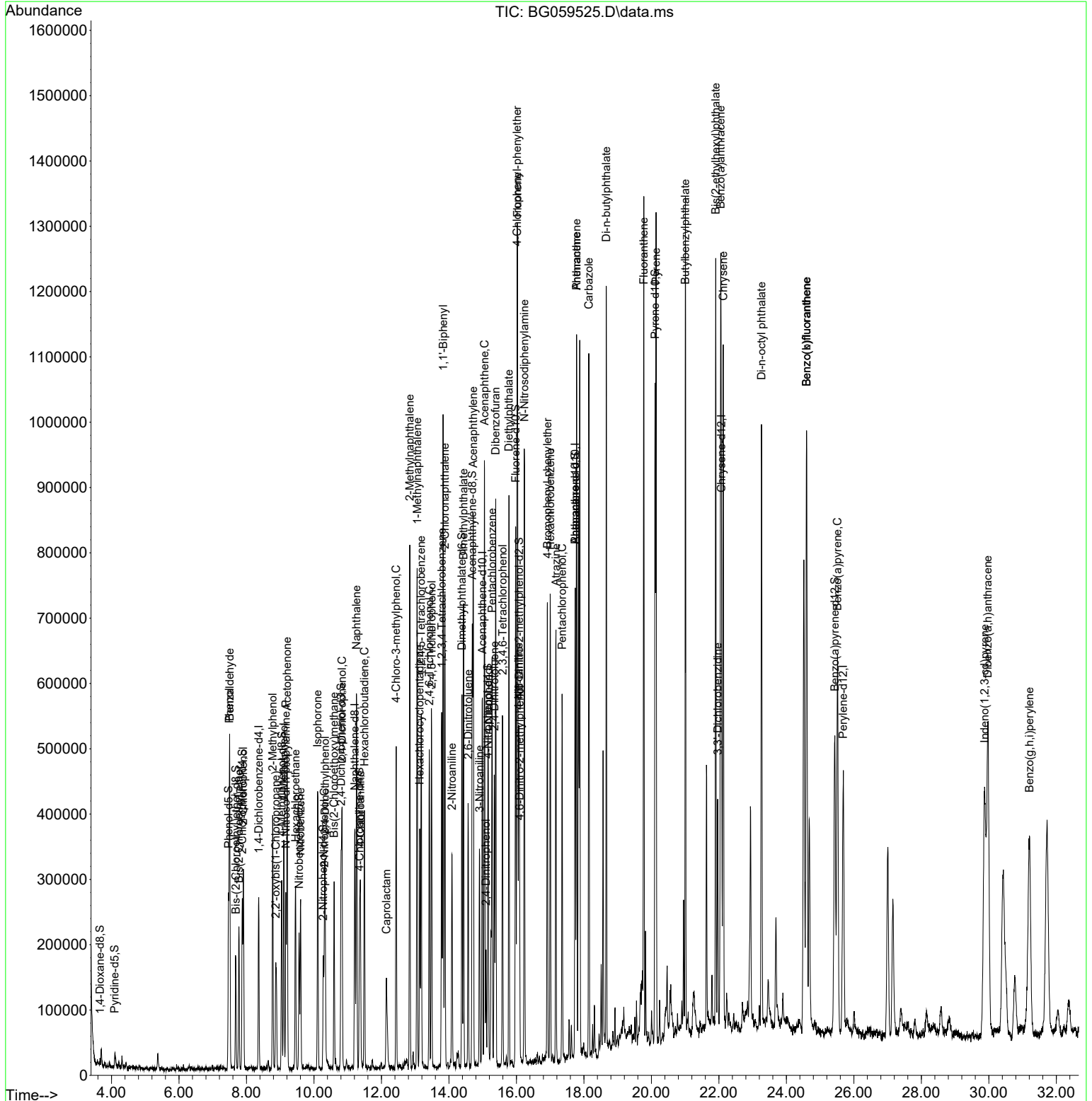
Compound	R.T.	QIon	Response	Conc	Units	Dev(Min)
40) Hexachlorocyclopentadiene	13.135	237	83045	23.903	ng/ul	94
41) 2,4,6-Trichlorophenol	13.417	196	107898	26.145	ng/ul	89
42) 2,4,5-Trichlorophenol	13.488	196	119150	26.668	ng/ul	96
43) 1,1'-Biphenyl	13.828	154	465388	24.896	ng/ul	95
44) 2-Chloronaphthalene	13.881	162	353883	24.357	ng/ul	95
45) 2-Nitroaniline	14.087	65	84057	31.094	ng/ul	94
47) Dimethylphthalate	14.434	163	451610	24.417	ng/ul	97
48) 2,6-Dinitrotoluene	14.569	165	84042	30.122	ng/ul#	86
50) Acenaphthylene	14.722	152	630623	24.913	ng/ul	98
51) 3-Nitroaniline	14.910	138	90006	25.881	ng/ul#	81
52) Acenaphthene	15.056	153	403403	24.448	ng/ul	96
53) 2,4-Dinitrophenol	15.098	184	44069	27.798	ng/ul	93
55) 4-Nitrophenol	15.168	109	103218	29.174	ng/ul	97
56) Dibenzofuran	15.385	168	535505	25.033	ng/ul	98
57) 2,4-Dinitrotoluene	15.344	165	116205	29.609	ng/ul	95
58) 2,3,4,6-Tetrachlorophenol	15.591	232	96139	27.415	ng/ul	94
59) Diethylphthalate	15.779	149	497697	24.667	ng/ul	96
61) Fluorene	16.032	166	451436	24.445	ng/ul#	94
62) 4-Chlorophenyl-phenyle...	16.020	204	197120	24.976	ng/ul	98
63) 4-Nitroaniline	16.067	138	95127	25.774	ng/ul	92
66) 4,6-Dinitro-2-methylph...	16.096	198	64508	30.157	ng/ul#	85
67) N-Nitrosodiphenylamine	16.237	169	385916	26.353	ng/ul	96
68) 4-Bromophenyl-phenylether	16.919	248	112002	26.116	ng/ul	95
69) Hexachlorobenzene	17.001	284	136222	27.483	ng/ul	97
70) Atrazine	17.172	200	126018	27.770	ng/ul#	87
71) Pentachlorophenol	17.354	266	82233	29.041	ng/ul	89
72) Phenanthrene	17.783	178	717674	25.758	ng/ul	98
74) Anthracene	17.783	178	717674	25.511	ng/ul	97
75) 1,2,3,4-Tetrachloroben...	13.787	216	148083	25.946	ng/uL	92
76) Pentachlorobenzene	15.280	250	134572	24.848	ng/uL	93
77) Carbazole	18.147	167	694029	28.718	ng/ul	95
78) Di-n-butylphthalate	18.664	149	863808	26.014	ng/ul	99
80) Fluoranthene	19.774	202	770422	24.995	ng/ul	97
82) Pyrene	20.139	202	812635	25.382	ng/ul	99
83) Butylbenzylphthalate	21.008	149	403437	27.902	ng/ul	93
84) 3,3'-Dichlorobenzidine	21.966	252	125136	13.228	ng/ul	99
85) Benzo(a)anthracene	22.054	228	748882	25.016	ng/ul	96
86) Bis(2-ethylhexyl)phtha...	21.907	149	581372	26.947	ng/ul#	99
87) Chrysene	22.131	228	717318	25.759	ng/ul	96
89) Di-n-octyl phthalate	23.264	149	976335	28.363	ng/ul	100
90) Benzo(b)fluoranthene	24.598	252	734300	25.765	ng/ul	98
91) Benzo(k)fluoranthene	24.598	252	737420	25.904	ng/ul	99
93) Benzo(a)pyrene	25.515	252	678806	25.201	ng/ul#	93
94) Indeno(1,2,3-cd)pyrene	29.874	276	757147	22.177	ng/ul	96
95) Dibenzo(a,h)anthracene	29.968	278	392104	13.905	ng/ul	94
96) Benzo(g,h,i)perylene	31.208	276	655124	23.445	ng/ul	95

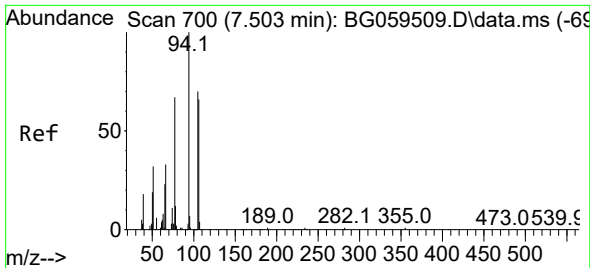
(#) = qualifier out of range (m) = manual integration (+) = signals summed

Data Path : Z:\svoasrv\HPCHEM1\BNA_G\Data\BG102823\
 Data File : BG059525.D
 Acq On : 28 Oct 2023 17:15
 Operator : MA/JU
 Sample : 04925-03MSD
 Misc :
 ALS Vial : 11 Sample Multiplier: 1

Instrument :
 BNA_G
 ClientSampleId :
 GCCW9MSD

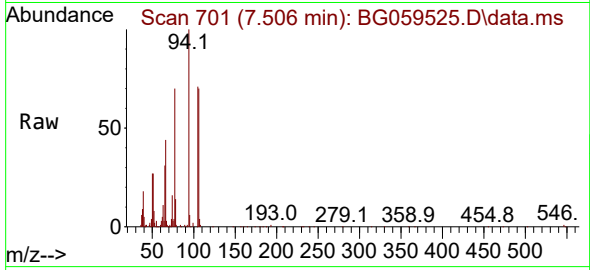
Quant Time: Oct 30 02:14:44 2023
 Quant Method : Z:\svoasrv\HPCHEM1\BNA_G\Methods\SFAM-EPA-BG102723.MA.M
 Quant Title : SVOA CALIBRATION
 QLast Update : Sat Oct 28 03:56:42 2023
 Response via : Initial Calibration



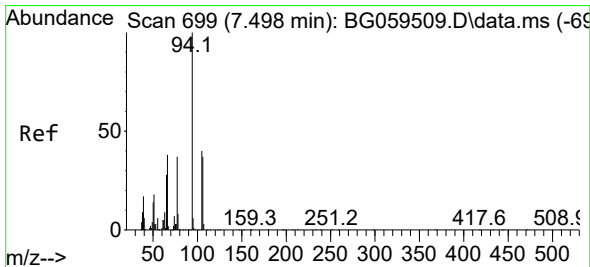
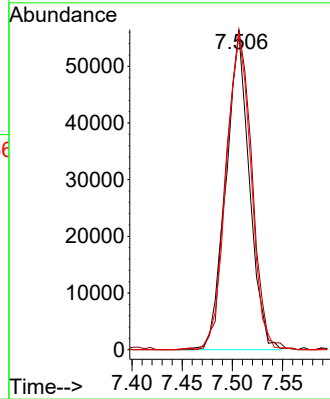
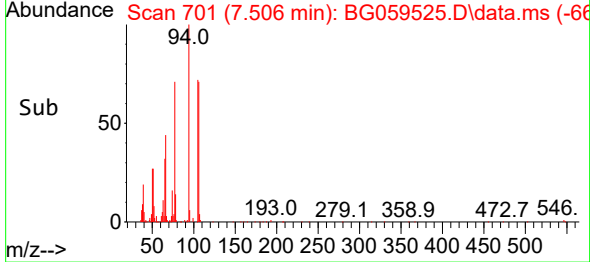


#6
Benzaldehyde
Concen: 25.507 ng/ul
RT: 7.506 min Scan# 700
Delta R.T. 0.003 min
Lab File: BG059525.D
Acq: 28 Oct 2023 17:15

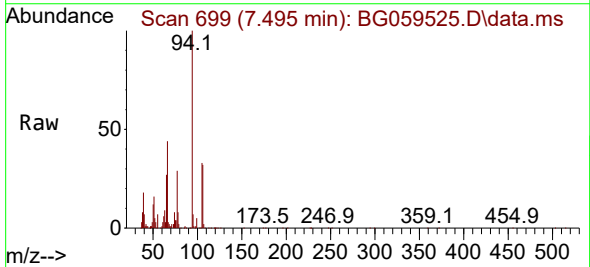
Instrument :
BNA_G
ClientSampleId :
GCCW9MSD



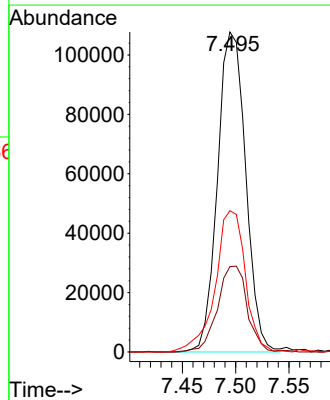
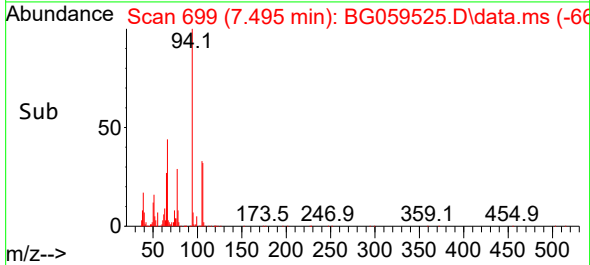
Tgt Ion: 77 Resp: 90991
Ion Ratio Lower Upper
77 100
105 101.2 83.6 125.4
106 99.9 78.6 118.0

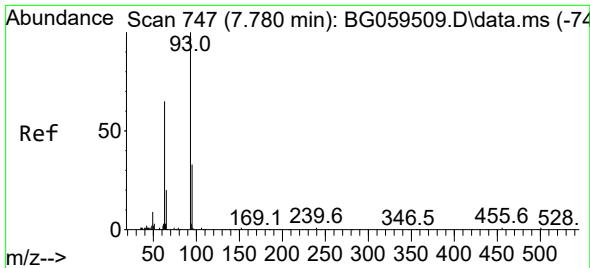


#8
Phenol
Concen: 26.461 ng/ul
RT: 7.495 min Scan# 699
Delta R.T. -0.003 min
Lab File: BG059525.D
Acq: 28 Oct 2023 17:15



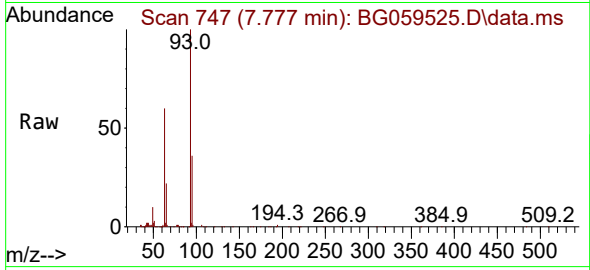
Tgt Ion: 94 Resp: 197574
Ion Ratio Lower Upper
94 100
65 26.7 22.5 33.7
66 44.1 31.1 46.7



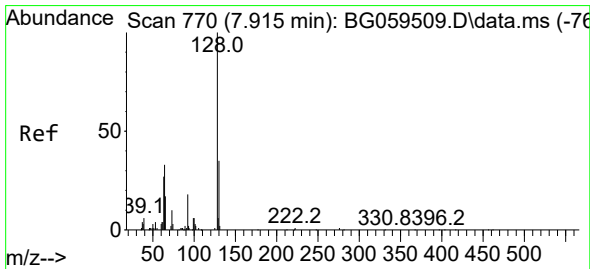
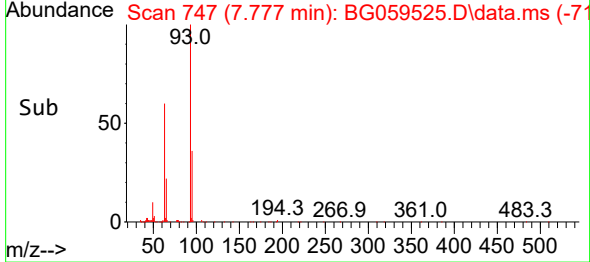
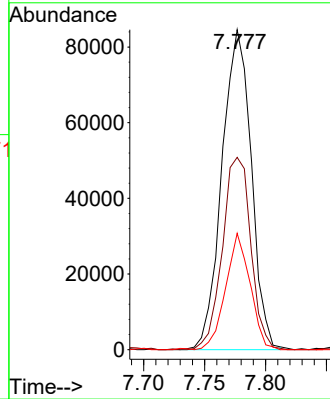


#10
 Bis(2-Chloroethyl)ether
 Concen: 25.903 ng/ul
 RT: 7.777 min Scan# 747
 Delta R.T. -0.003 min
 Lab File: BG059525.D
 Acq: 28 Oct 2023 17:15

Instrument :
 BNA_G
 ClientSampleId :
 GCCW9MSD

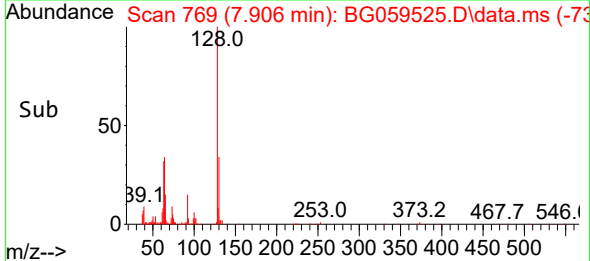
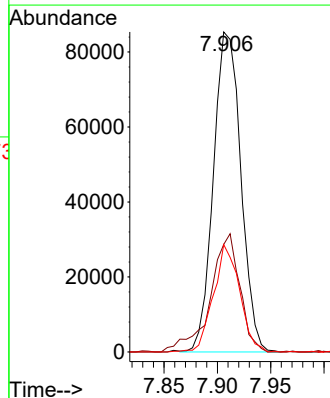
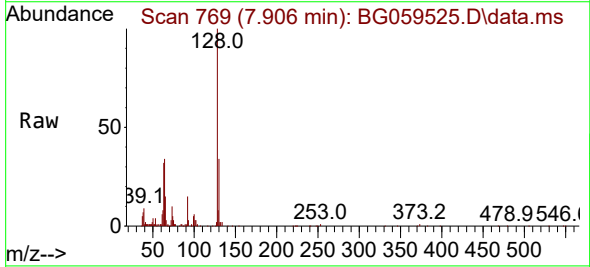


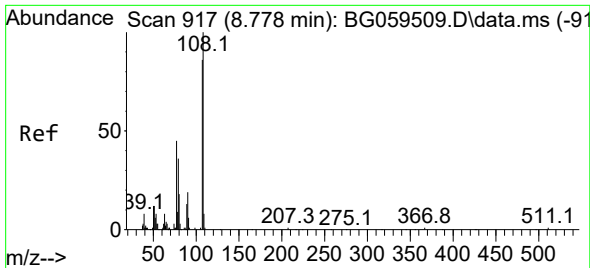
Tgt Ion: 93 Resp: 141829
 Ion Ratio Lower Upper
 93 100
 63 60.1 52.5 78.7
 95 36.4 26.5 39.7



#12
 2-Chlorophenol
 Concen: 24.023 ng/ul
 RT: 7.906 min Scan# 769
 Delta R.T. -0.009 min
 Lab File: BG059525.D
 Acq: 28 Oct 2023 17:15

Tgt Ion: 128 Resp: 153026
 Ion Ratio Lower Upper
 128 100
 64 33.6 30.2 45.2
 130 33.6 27.9 41.9

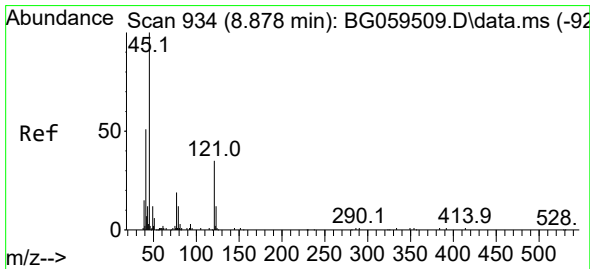
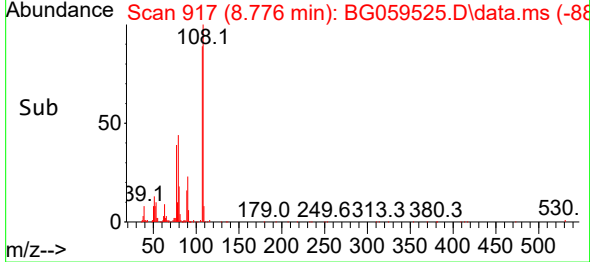
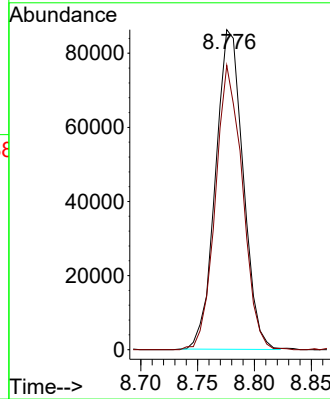
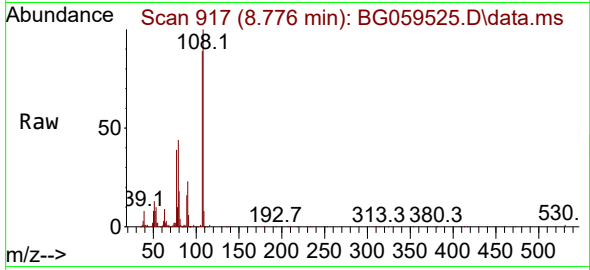




#13
 2-Methylphenol
 Concen: 23.420 ng/ul
 RT: 8.776 min Scan# 913
 Delta R.T. -0.003 min
 Lab File: BG059525.D
 Acq: 28 Oct 2023 17:15

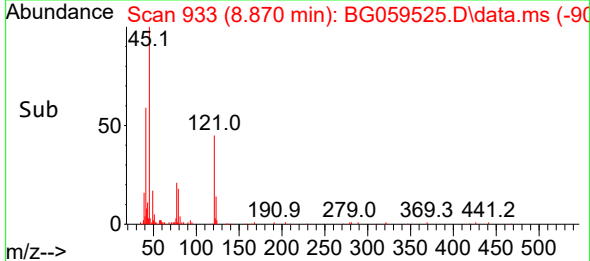
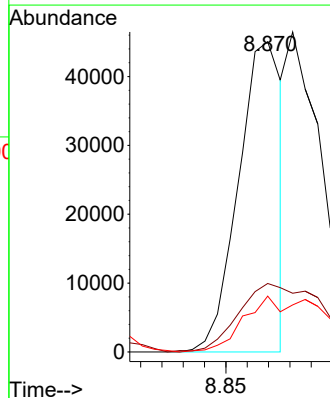
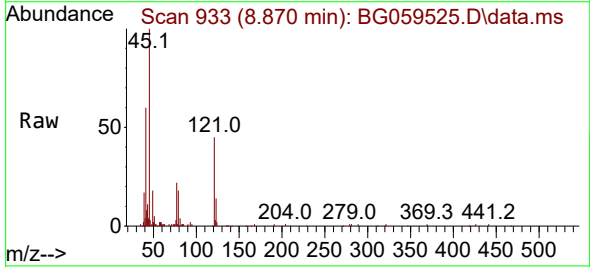
Instrument :
 BNA_G
 ClientSampleId :
 GCCW9MSD

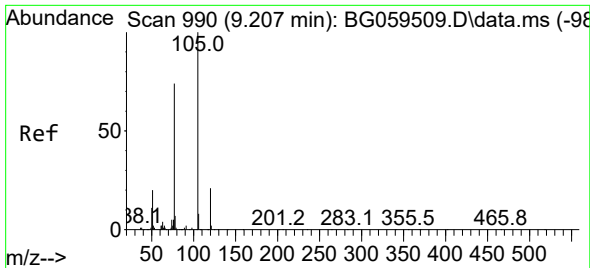
Tgt Ion:108 Resp: 145773
 Ion Ratio Lower Upper
 108 100
 107 88.8 68.6 102.8



#14
 2,2'-oxybis(1-Chloropropane)
 Concen: 12.383 ng/ul
 RT: 8.870 min Scan# 933
 Delta R.T. -0.009 min
 Lab File: BG059525.D
 Acq: 28 Oct 2023 17:15

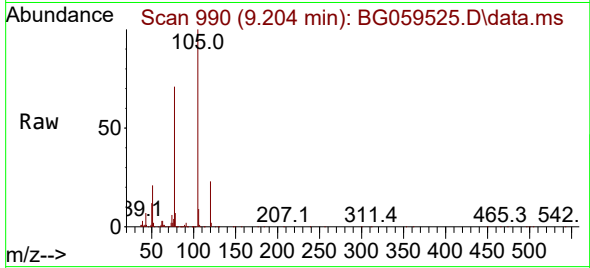
Tgt Ion: 45 Resp: 63807
 Ion Ratio Lower Upper
 45 100
 77 22.1 15.0 22.6
 79 18.0 10.0 15.0#



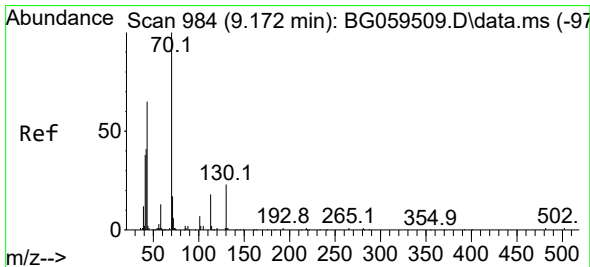
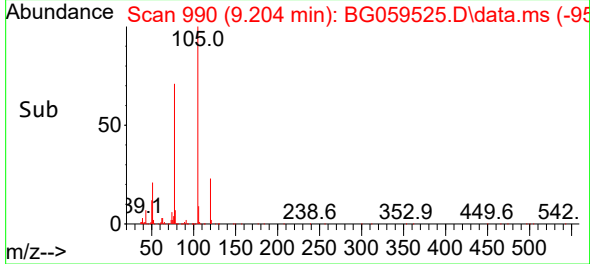
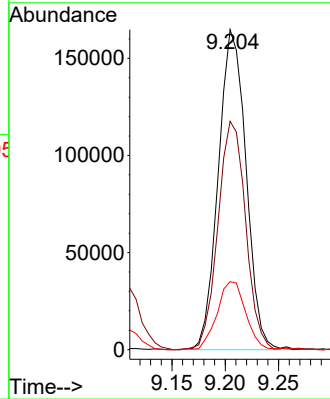


#16
 Acetophenone
 Concen: 30.014 ng/ul
 RT: 9.204 min Scan# 990
 Delta R.T. -0.003 min
 Lab File: BG059525.D
 Acq: 28 Oct 2023 17:15

Instrument :
 BNA_G
 ClientSampleId :
 GCCW9MSD

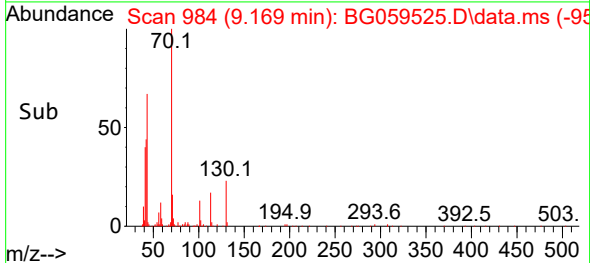
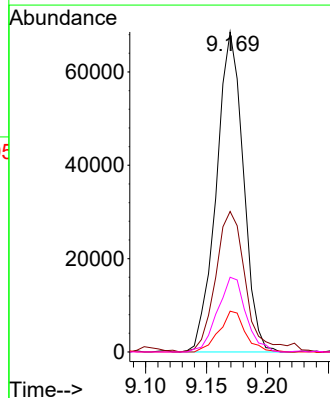
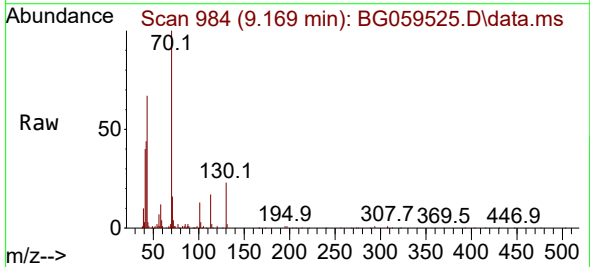


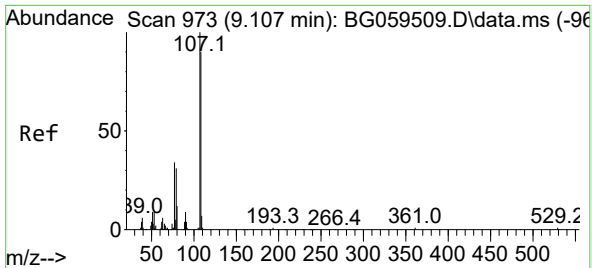
Tgt Ion:105 Resp: 297280
 Ion Ratio Lower Upper
 105 100
 77 71.3 59.6 89.4
 51 21.3 16.2 24.4



#17
 N-Nitroso-di-n-propylamine
 Concen: 22.657 ng/ul
 RT: 9.169 min Scan# 984
 Delta R.T. -0.003 min
 Lab File: BG059525.D
 Acq: 28 Oct 2023 17:15

Tgt Ion: 70 Resp: 105741
 Ion Ratio Lower Upper
 70 100
 42 43.9 33.8 50.8
 101 12.8 5.4 8.0#
 130 23.3 18.2 27.4

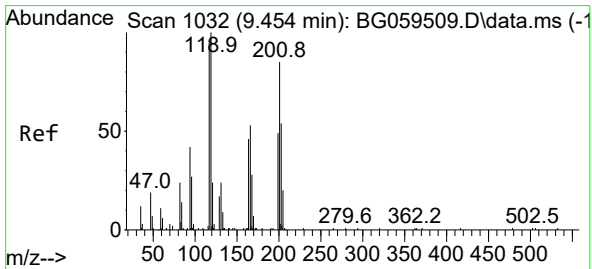
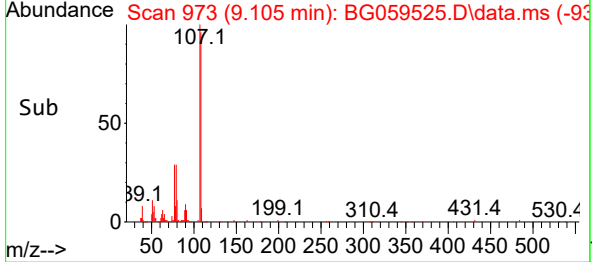
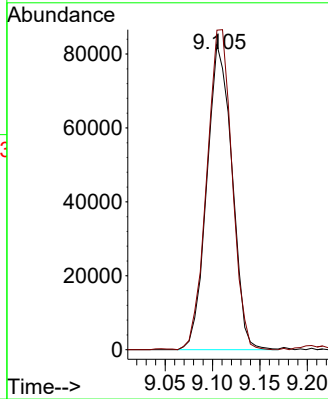
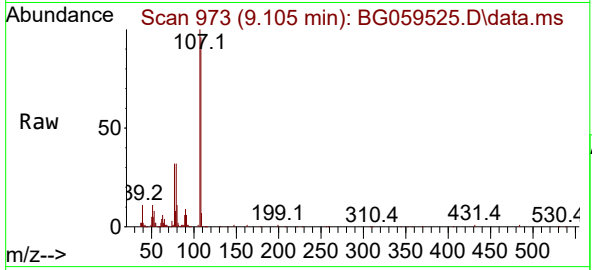




#18
 4-Methylphenol
 Concen: 23.118 ng/ul
 RT: 9.105 min Scan# 91
 Delta R.T. -0.003 min
 Lab File: BG059525.D
 Acq: 28 Oct 2023 17:15

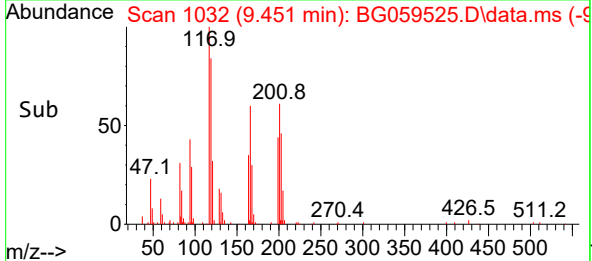
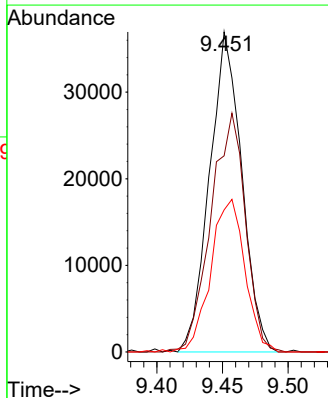
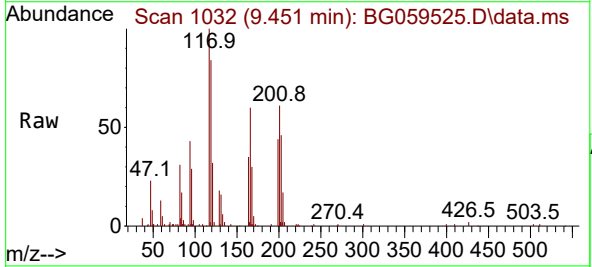
Instrument :
 BNA_G
 ClientSampleId :
 GCCW9MSD

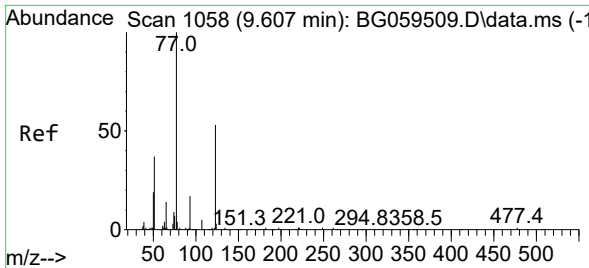
Tgt Ion:108 Resp: 153105
 Ion Ratio Lower Upper
 108 100
 107 104.6 88.9 133.3



#19
 Hexachloroethane
 Concen: 24.920 ng/ul
 RT: 9.451 min Scan# 1032
 Delta R.T. -0.003 min
 Lab File: BG059525.D
 Acq: 28 Oct 2023 17:15

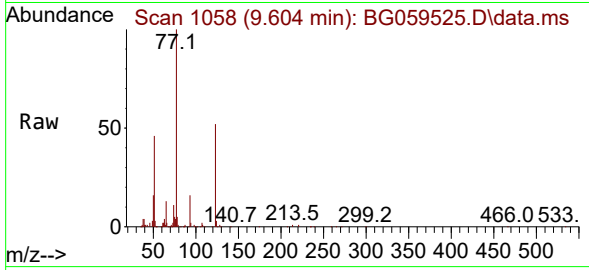
Tgt Ion:117 Resp: 63047
 Ion Ratio Lower Upper
 117 100
 201 61.3 75.8 113.6#
 199 44.4 42.3 63.5





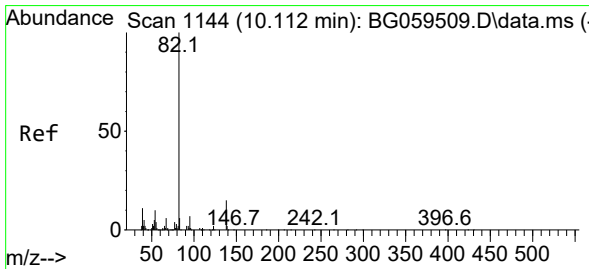
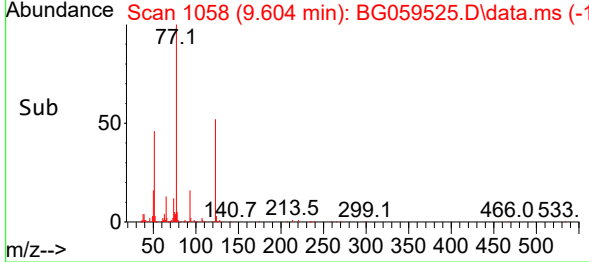
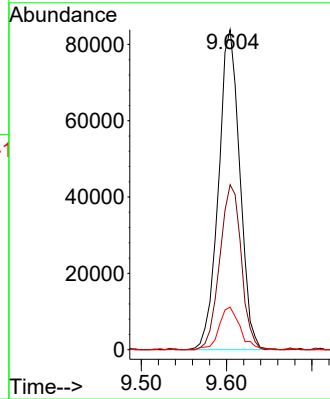
#22
 Nitrobenzene
 Concen: 28.475 ng/u1
 RT: 9.604 min Scan# 1058
 Delta R.T. -0.003 min
 Lab File: BG059525.D
 Acq: 28 Oct 2023 17:15

Instrument :
 BNA_G
 ClientSampleId :
 GCCW9MSD

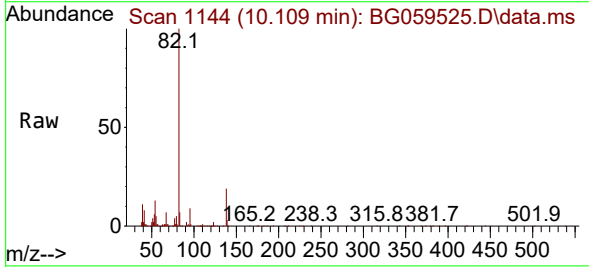


Tgt Ion: 77 Resp: 145375

Ion	Ratio	Lower	Upper
77	100		
123	51.5	42.6	63.8
65	13.3	11.0	16.4

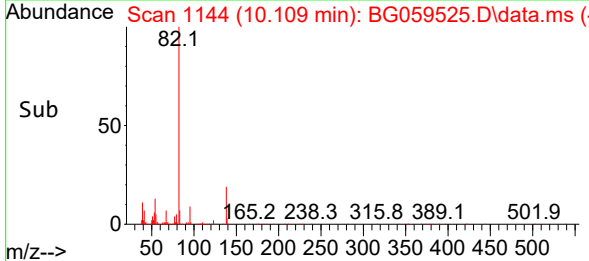
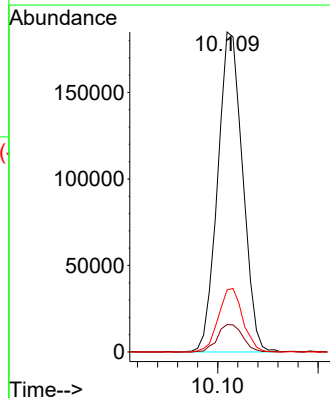


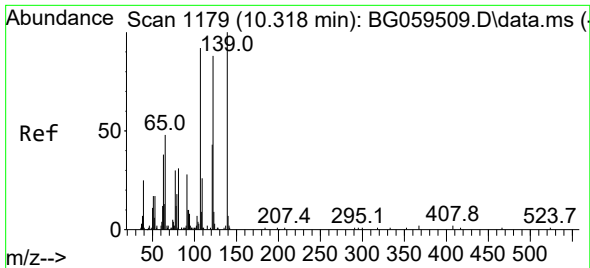
#23
 Isophorone
 Concen: 24.890 ng/u1
 RT: 10.109 min Scan# 1144
 Delta R.T. -0.003 min
 Lab File: BG059525.D
 Acq: 28 Oct 2023 17:15



Tgt Ion: 82 Resp: 320006

Ion	Ratio	Lower	Upper
82	100		
95	8.6	5.6	8.4#
138	19.4	12.3	18.5#

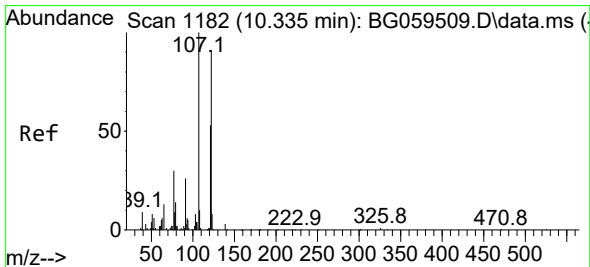
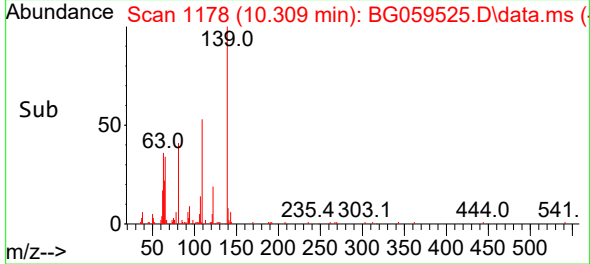
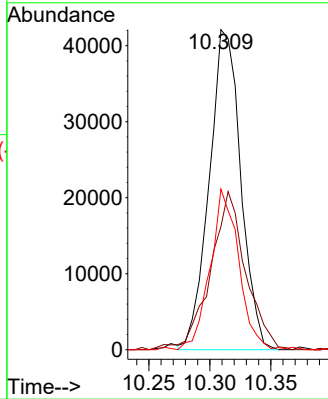
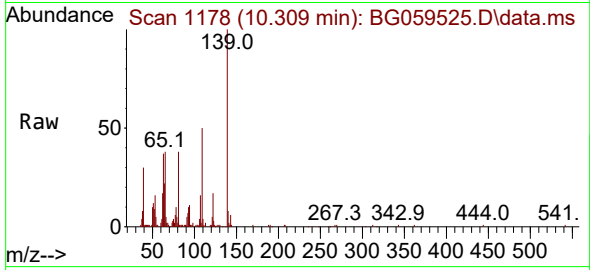




#25
 2-Nitrophenol
 Concen: 28.971 ng/ul
 RT: 10.309 min Scan# 1179
 Delta R.T. -0.009 min
 Lab File: BG059525.D
 Acq: 28 Oct 2023 17:15

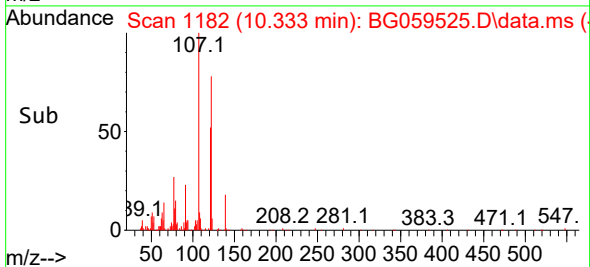
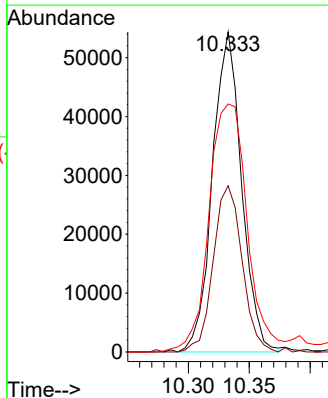
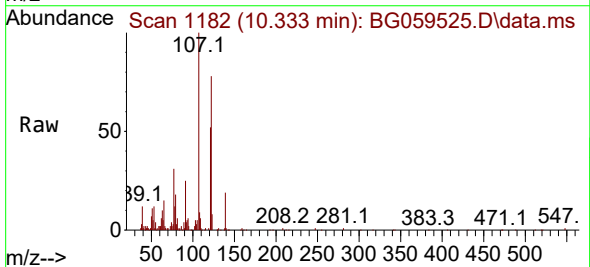
Instrument :
 BNA_G
 ClientSampleId :
 GCCW9MSD

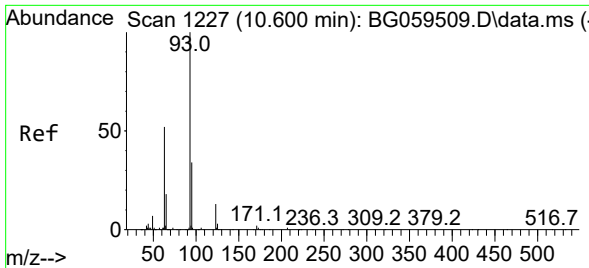
Tgt Ion:139 Resp: 75655
 Ion Ratio Lower Upper
 139 100
 65 38.5 39.7 59.5#
 109 50.1 21.0 31.6#



#26
 2,4-Dimethylphenol
 Concen: 13.150 ng/ul
 RT: 10.333 min Scan# 1182
 Delta R.T. -0.003 min
 Lab File: BG059525.D
 Acq: 28 Oct 2023 17:15

Tgt Ion:107 Resp: 90329
 Ion Ratio Lower Upper
 107 100
 121 51.9 42.7 64.1
 122 77.5 72.6 108.8

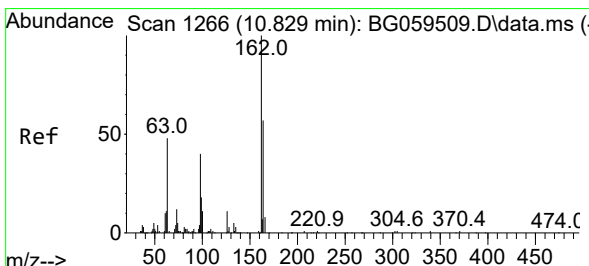
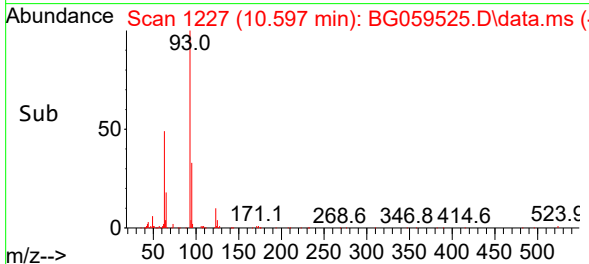
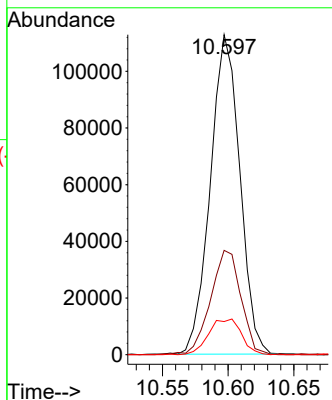
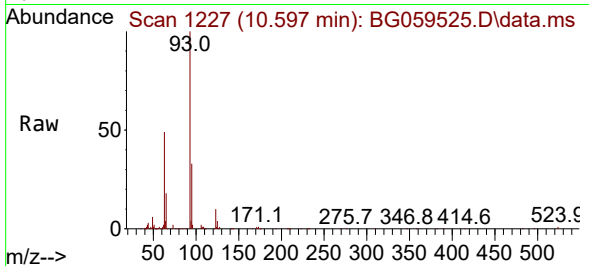




#27
 Bis(2-Chloroethoxy)methane
 Concen: 24.617 ng/ul
 RT: 10.597 min Scan# 11
 Delta R.T. -0.003 min
 Lab File: BG059525.D
 Acq: 28 Oct 2023 17:15

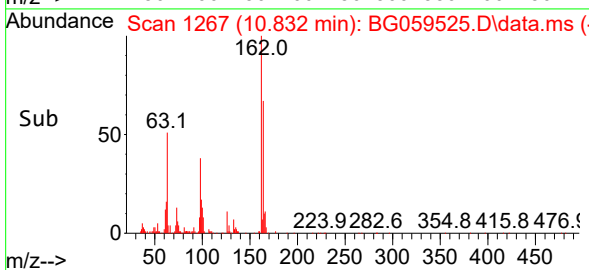
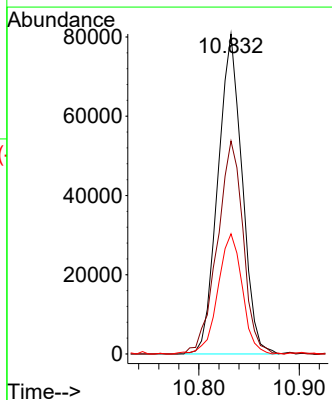
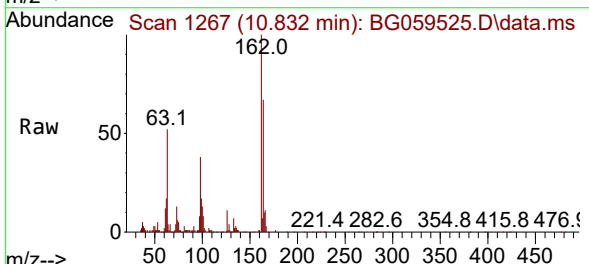
Instrument :
 BNA_G
 ClientSampleId :
 GCCW9MSD

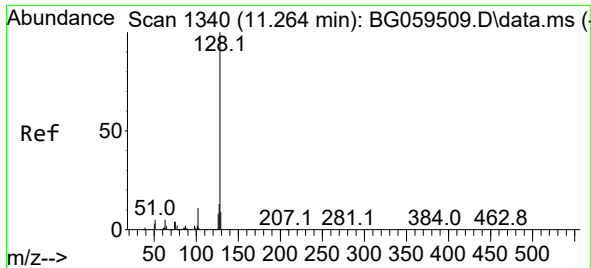
Tgt Ion	Resp	Lower	Upper
93	176228		
93	100		
95	32.6	27.1	40.7
123	10.4	10.3	15.5



#29
 2,4-Dichlorophenol
 Concen: 26.110 ng/ul
 RT: 10.832 min Scan# 1267
 Delta R.T. 0.003 min
 Lab File: BG059525.D
 Acq: 28 Oct 2023 17:15

Tgt Ion	Resp	Lower	Upper
162	135139		
162	100		
164	66.5	45.3	67.9
98	37.6	32.2	48.4

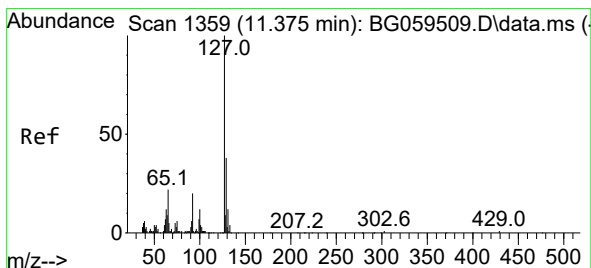
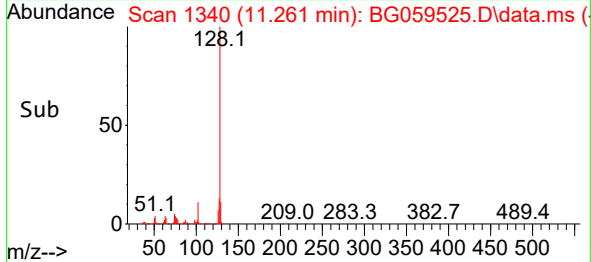
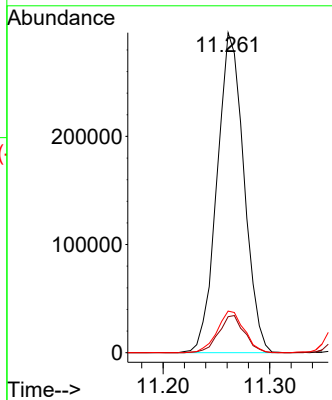
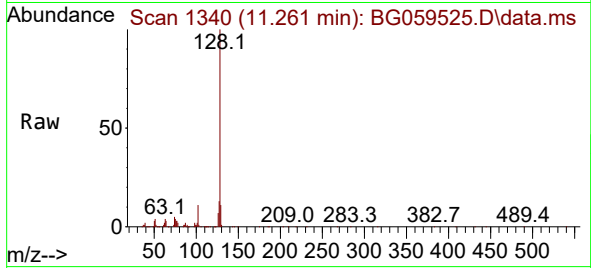




#30
 Naphthalene
 Concen: 25.025 ng/u1
 RT: 11.261 min Scan# 11
 Delta R.T. -0.003 min
 Lab File: BG059525.D
 Acq: 28 Oct 2023 17:15

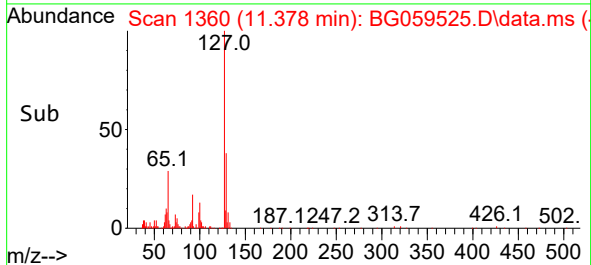
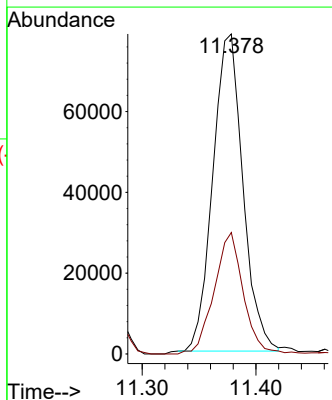
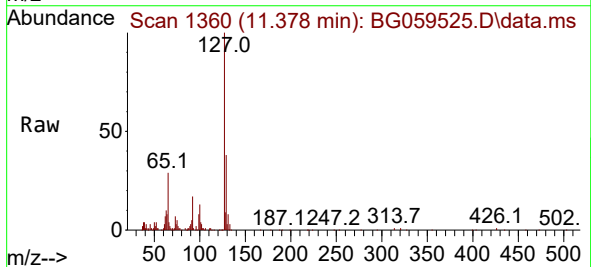
Instrument :
 BNA_G
 ClientSampleId :
 GCCW9MSD

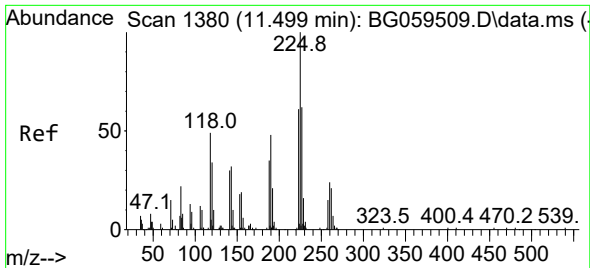
Tgt Ion:128 Resp: 518866
 Ion Ratio Lower Upper
 128 100
 129 11.3 7.4 11.0#
 127 13.0 10.5 15.7



#32
 4-Chloroaniline
 Concen: 17.248 ng/u1
 RT: 11.378 min Scan# 1360
 Delta R.T. 0.003 min
 Lab File: BG059525.D
 Acq: 28 Oct 2023 17:15

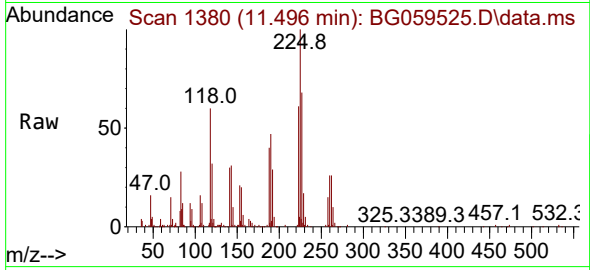
Tgt Ion:127 Resp: 144287
 Ion Ratio Lower Upper
 127 100
 129 37.9 30.4 45.6



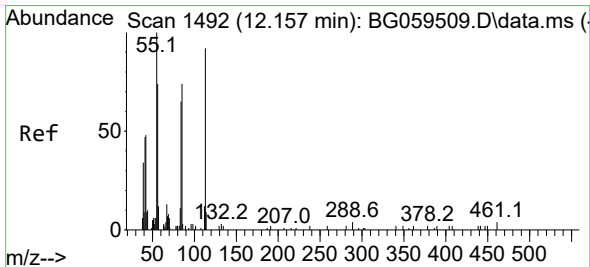
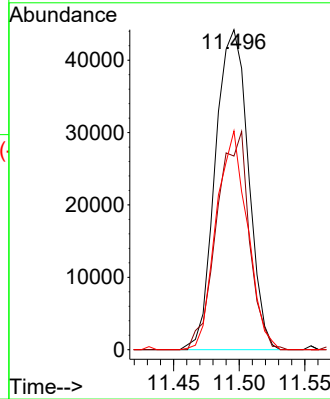
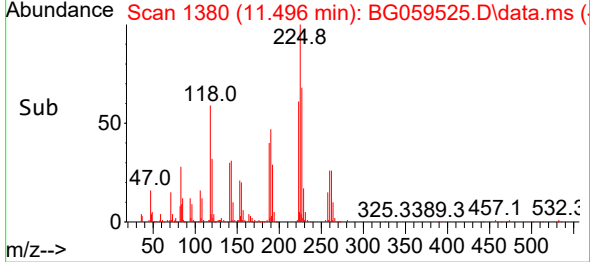


#33
 Hexachlorobutadiene
 Concen: 24.888 ng/uI
 RT: 11.496 min Scan# 111
 Delta R.T. -0.003 min
 Lab File: BG059525.D
 Acq: 28 Oct 2023 17:15

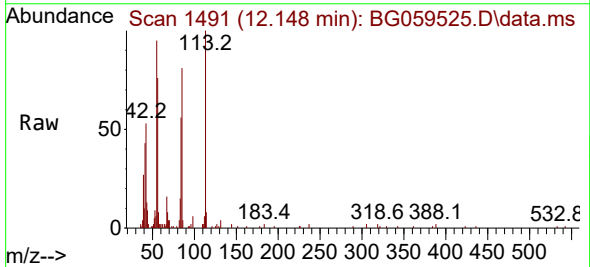
Instrument :
 BNA_G
 ClientSampleId :
 GCCW9MSD



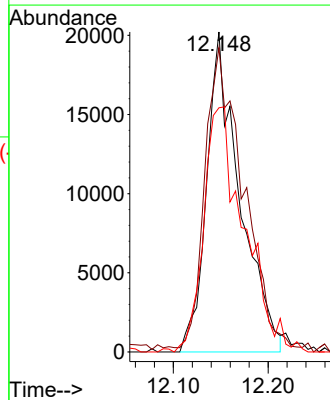
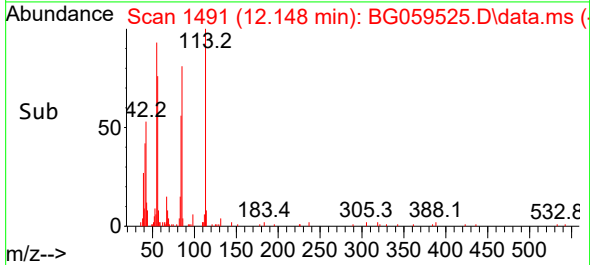
Tgt Ion:225 Resp: 77278
 Ion Ratio Lower Upper
 225 100
 223 60.5 50.8 76.2
 227 68.4 49.8 74.8

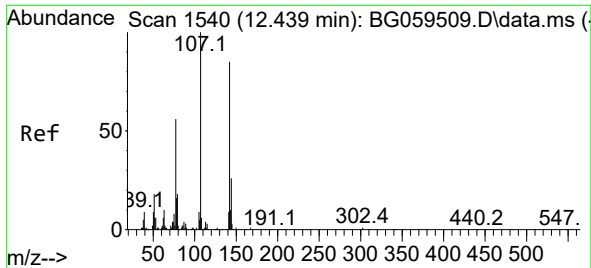


#34
 Caprolactam
 Concen: 25.859 ng/uI
 RT: 12.148 min Scan# 1491
 Delta R.T. -0.009 min
 Lab File: BG059525.D
 Acq: 28 Oct 2023 17:15



Tgt Ion:113 Resp: 48962
 Ion Ratio Lower Upper
 113 100
 55 95.1 86.9 130.3
 56 76.3 64.4 96.6

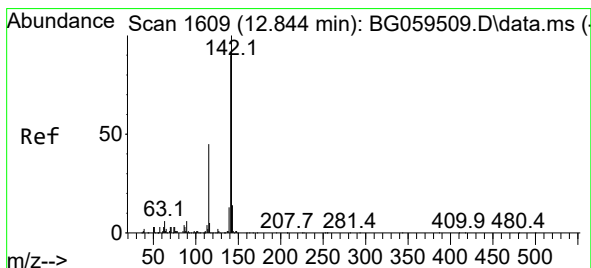
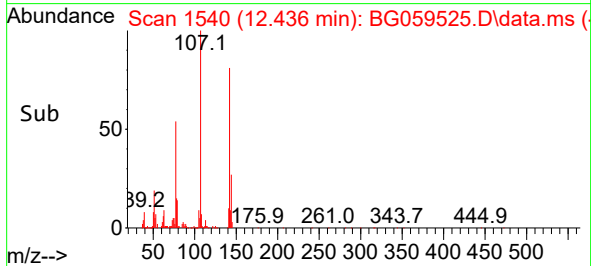
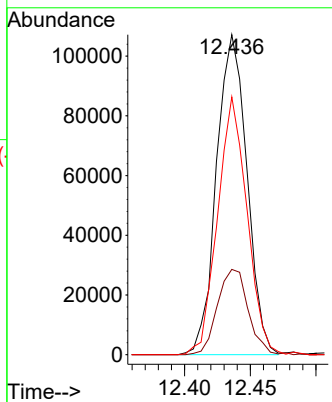
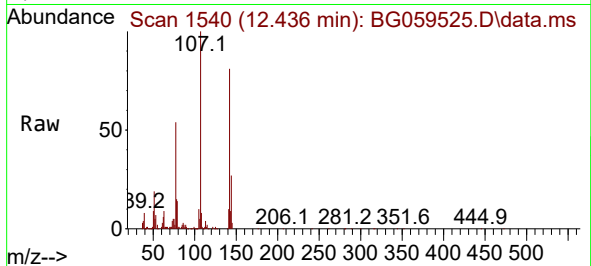




#35
 4-Chloro-3-methylphenol
 Concen: 28.050 ng/ul
 RT: 12.436 min Scan# 11
 Delta R.T. -0.003 min
 Lab File: BG059525.D
 Acq: 28 Oct 2023 17:15

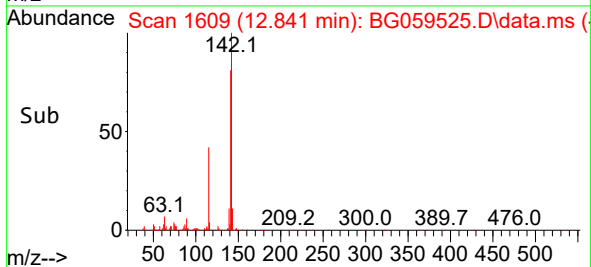
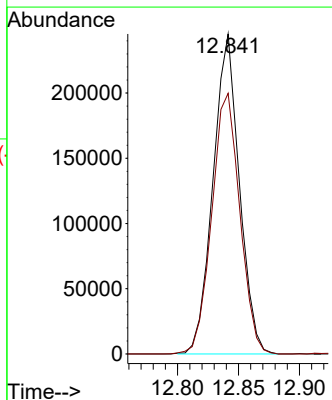
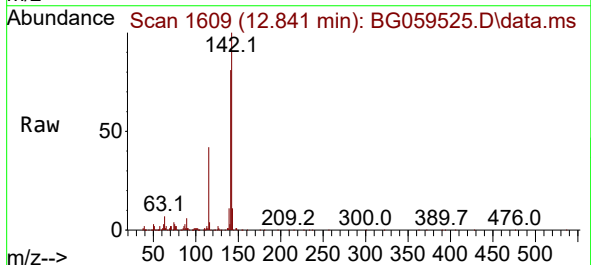
Instrument :
 BNA_G
 ClientSampleId :
 GCCW9MSD

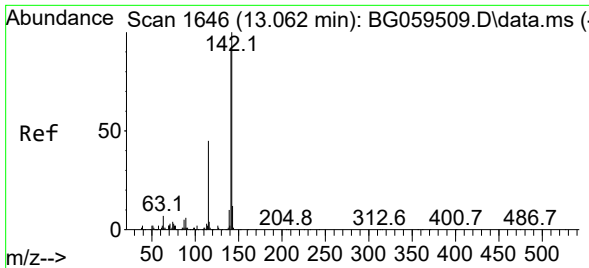
Tgt Ion	Resp	Lower	Upper
107	173221		
144	26.7	21.0	31.6
142	80.5	68.2	102.4



#36
 2-Methylnaphthalene
 Concen: 25.835 ng/ul
 RT: 12.841 min Scan# 1609
 Delta R.T. -0.003 min
 Lab File: BG059525.D
 Acq: 28 Oct 2023 17:15

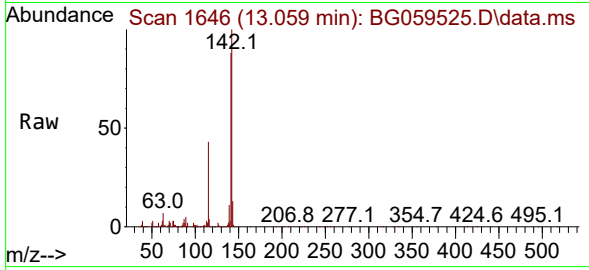
Tgt Ion	Resp	Lower	Upper
142	368510		
141	81.5	71.7	107.5





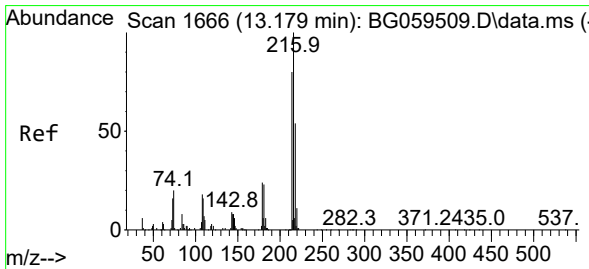
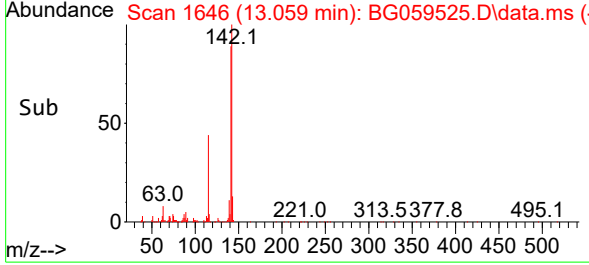
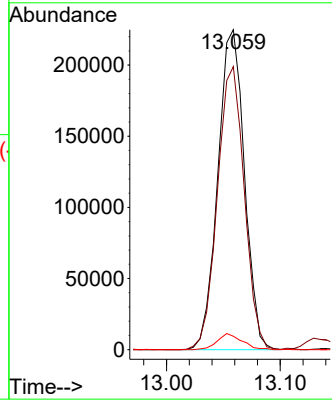
#37
 1-Methylnaphthalene
 Concen: 25.712 ng/ul
 RT: 13.059 min Scan# 1646
 Delta R.T. -0.003 min
 Lab File: BG059525.D
 Acq: 28 Oct 2023 17:15

Instrument :
 BNA_G
 ClientSampleId :
 GCCW9MSD

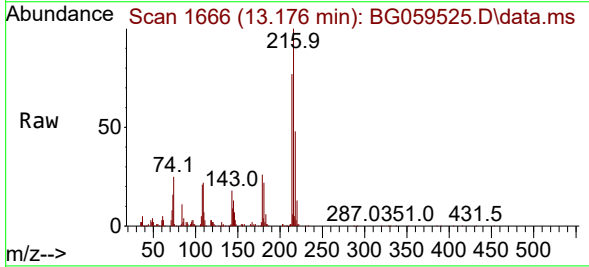


Tgt Ion:142 Resp: 365306

Ion	Ratio	Lower	Upper
142	100		
141	88.4	73.1	109.7
116	4.2	3.3	4.9

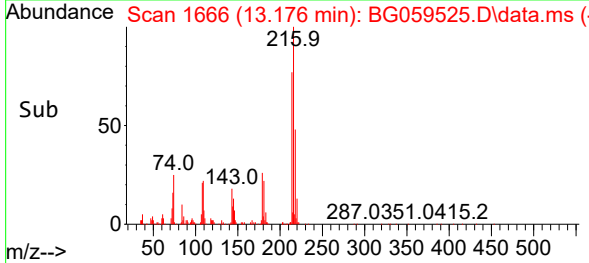
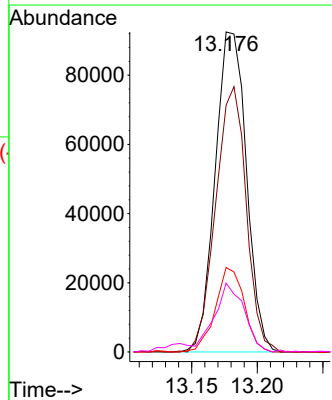


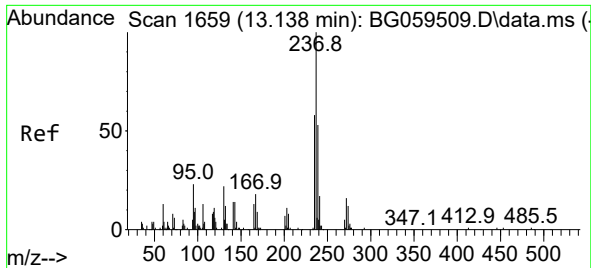
#39
 1,2,4,5-Tetrachlorobenzene
 Concen: 25.714 ng/ul
 RT: 13.176 min Scan# 1666
 Delta R.T. -0.003 min
 Lab File: BG059525.D
 Acq: 28 Oct 2023 17:15



Tgt Ion:216 Resp: 153258

Ion	Ratio	Lower	Upper
216	100		
214	77.2	63.7	95.5
179	26.4	19.2	28.8
108	21.5	16.5	24.7

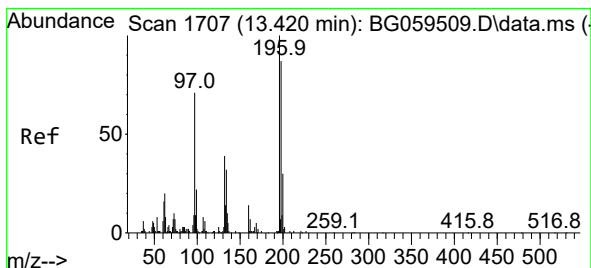
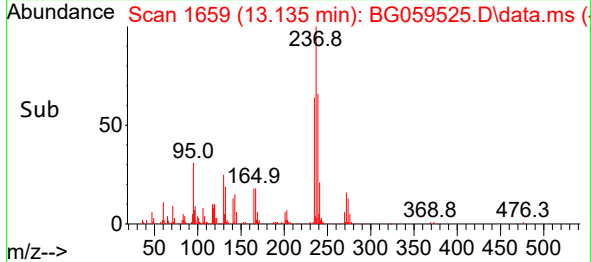
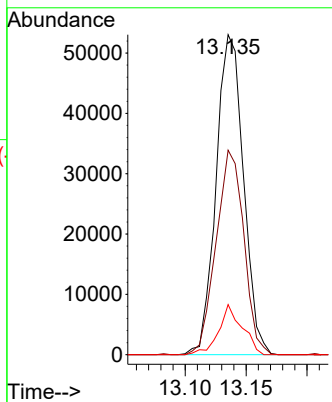
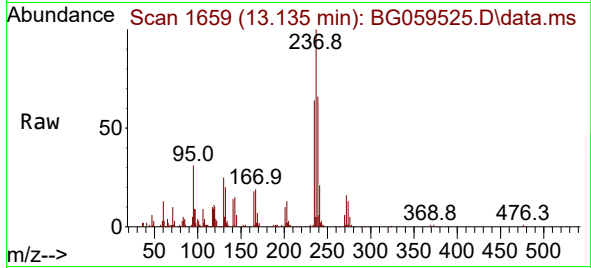




#40
 Hexachlorocyclopentadiene
 Concen: 23.903 ng/ul
 RT: 13.135 min Scan# 1
 Delta R.T. -0.003 min
 Lab File: BG059525.D
 Acq: 28 Oct 2023 17:15

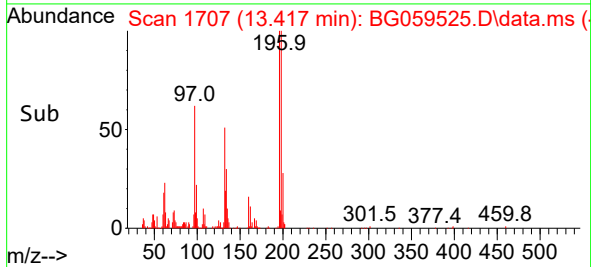
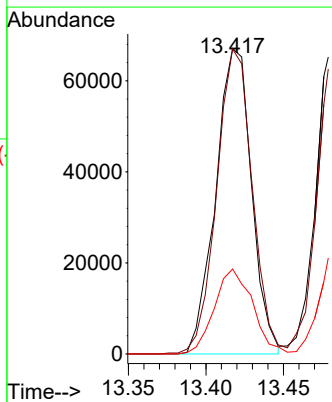
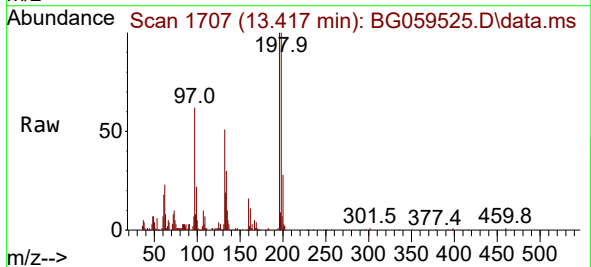
Instrument :
 BNA_G
 ClientSampleId :
 GCCW9MSD

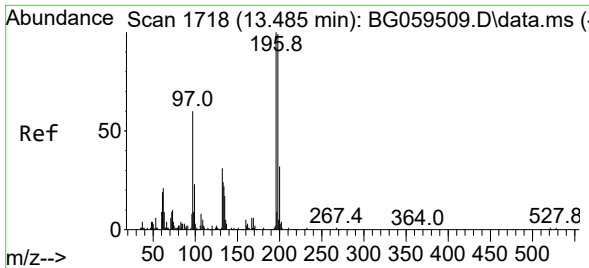
Tgt Ion	Resp	Lower	Upper
237	100		
235	63.9	46.6	69.8
272	15.6	13.0	19.4



#41
 2,4,6-Trichlorophenol
 Concen: 26.145 ng/ul
 RT: 13.417 min Scan# 1707
 Delta R.T. -0.003 min
 Lab File: BG059525.D
 Acq: 28 Oct 2023 17:15

Tgt Ion	Resp	Lower	Upper
196	100		
198	99.8	69.6	104.4
200	27.8	23.8	35.8

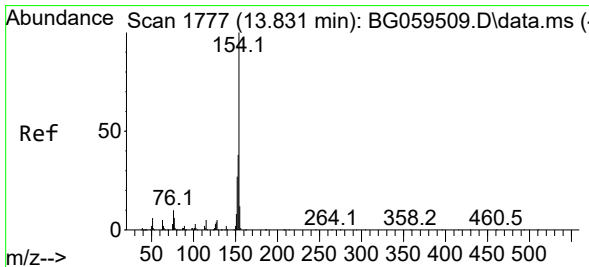
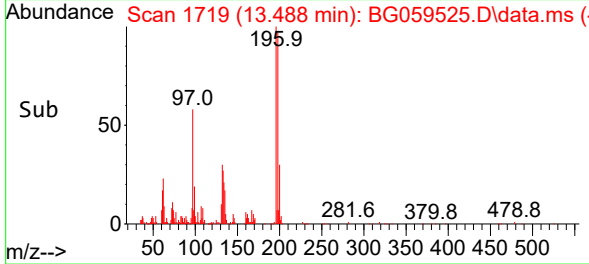
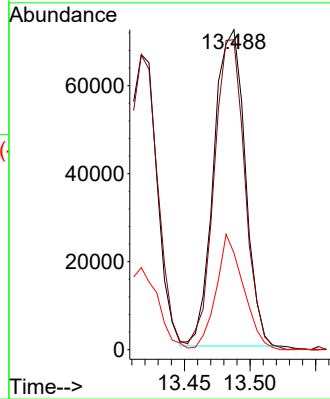
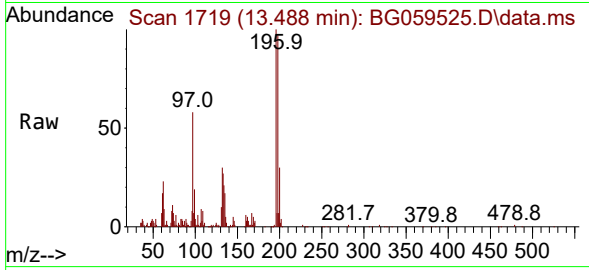




#42
 2,4,5-Trichlorophenol
 Concen: 26.668 ng/ul
 RT: 13.488 min Scan# 1718
 Delta R.T. 0.003 min
 Lab File: BG059525.D
 Acq: 28 Oct 2023 17:15

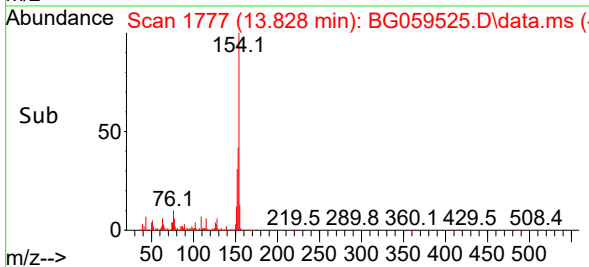
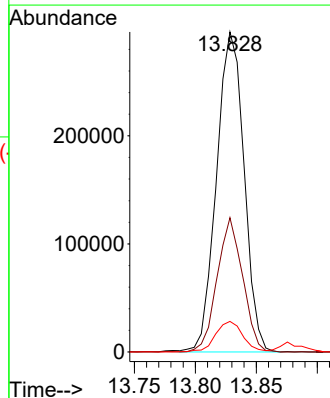
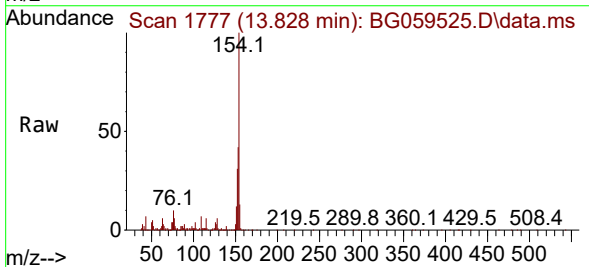
Instrument :
 BNA_G
 ClientSampleId :
 GCCW9MSD

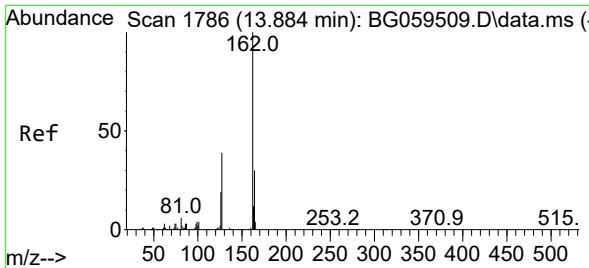
Tgt Ion:196 Resp: 119150
 Ion Ratio Lower Upper
 196 100
 198 96.8 79.8 119.6
 200 30.2 28.0 42.0



#43
 1,1'-Biphenyl
 Concen: 24.896 ng/ul
 RT: 13.828 min Scan# 1777
 Delta R.T. -0.003 min
 Lab File: BG059525.D
 Acq: 28 Oct 2023 17:15

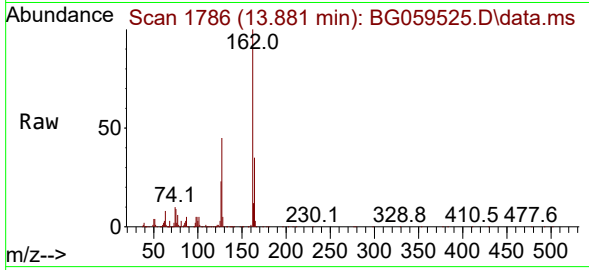
Tgt Ion:154 Resp: 465388
 Ion Ratio Lower Upper
 154 100
 153 42.0 30.7 46.1
 76 9.6 8.2 12.4



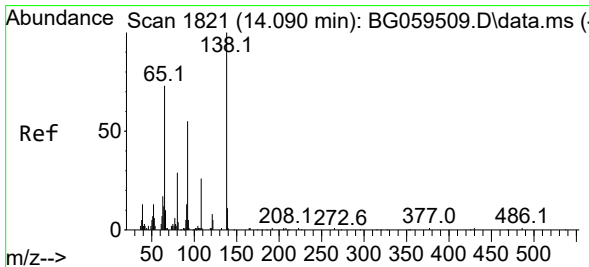
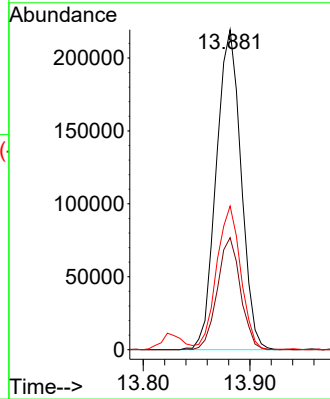
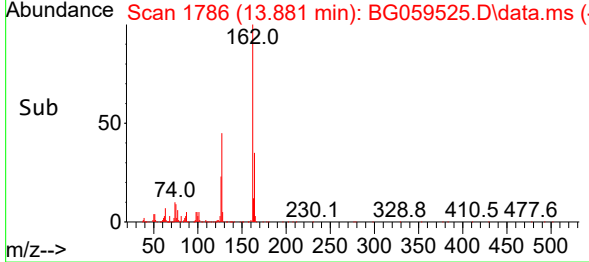


#44
 2-Chloronaphthalene
 Concen: 24.357 ng/ul
 RT: 13.881 min Scan# 1786
 Delta R.T. -0.003 min
 Lab File: BG059525.D
 Acq: 28 Oct 2023 17:15

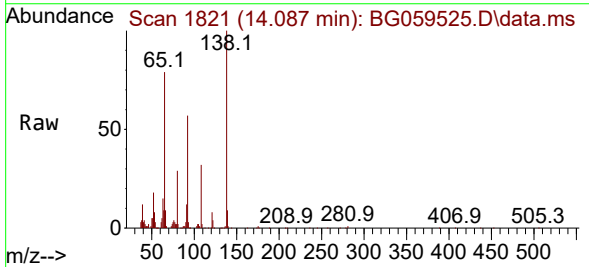
Instrument :
 BNA_G
 ClientSampleId :
 GCCW9MSD



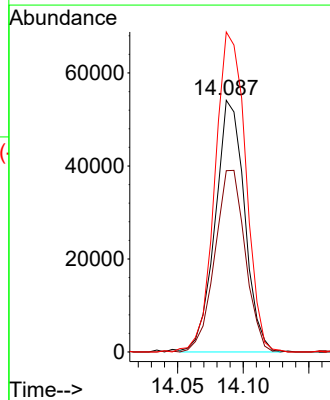
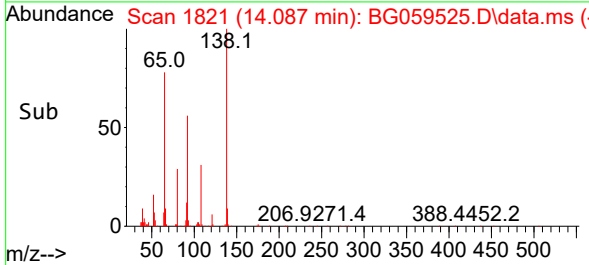
Tgt Ion:162 Resp: 353883
 Ion Ratio Lower Upper
 162 100
 164 35.0 23.9 35.9
 127 44.9 35.3 52.9

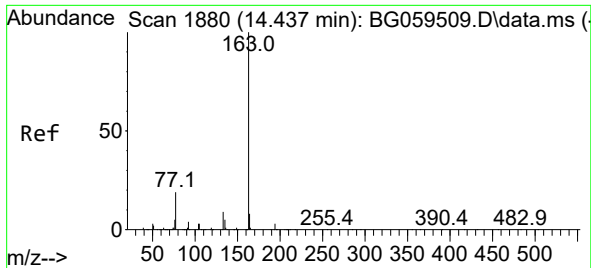


#45
 2-Nitroaniline
 Concen: 31.094 ng/ul
 RT: 14.087 min Scan# 1821
 Delta R.T. -0.003 min
 Lab File: BG059525.D
 Acq: 28 Oct 2023 17:15



Tgt Ion: 65 Resp: 84057
 Ion Ratio Lower Upper
 65 100
 92 72.0 59.6 89.4
 138 127.1 109.0 163.6

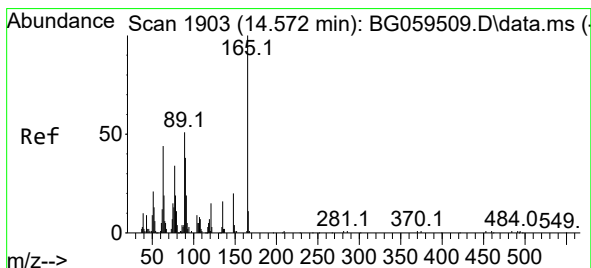
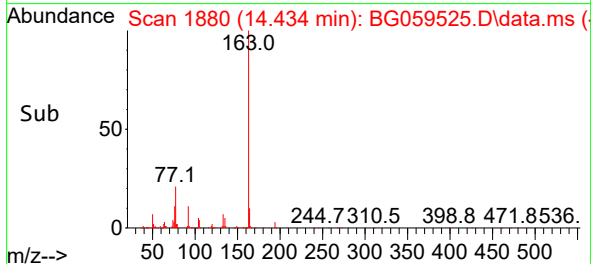
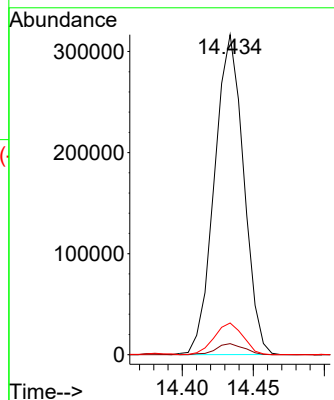
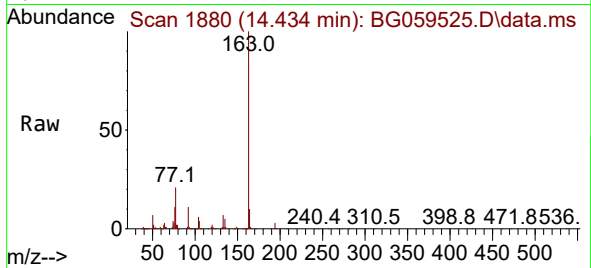




#47
Dimethylphthalate
Concen: 24.417 ng/ul
RT: 14.434 min Scan# 1880
Delta R.T. -0.003 min
Lab File: BG059525.D
Acq: 28 Oct 2023 17:15

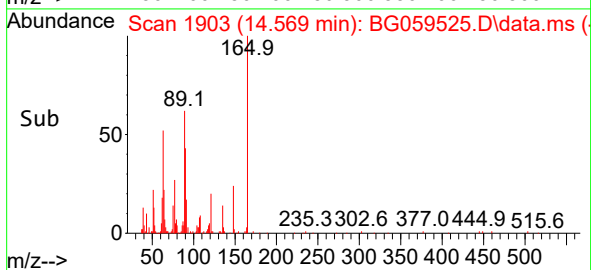
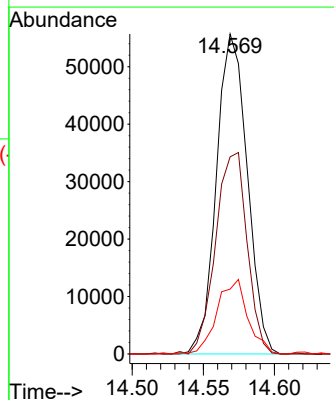
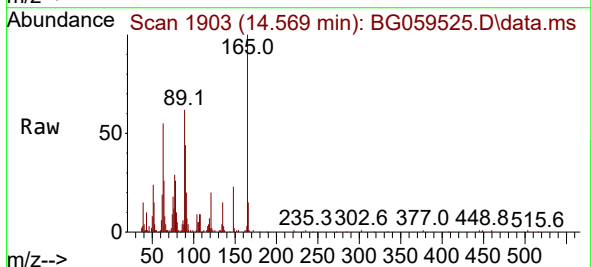
Instrument :
BNA_G
ClientSampleId :
GCCW9MSD

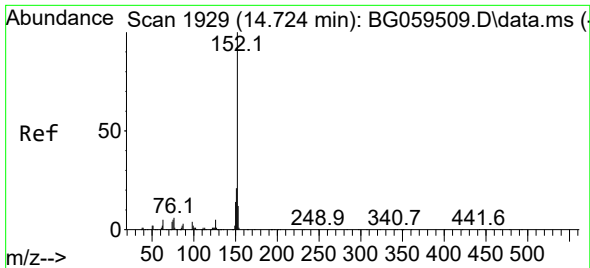
Tgt Ion:163 Resp: 451610
Ion Ratio Lower Upper
163 100
194 3.5 2.6 3.8
164 9.9 6.6 10.0



#48
2,6-Dinitrotoluene
Concen: 30.122 ng/ul
RT: 14.569 min Scan# 1903
Delta R.T. -0.003 min
Lab File: BG059525.D
Acq: 28 Oct 2023 17:15

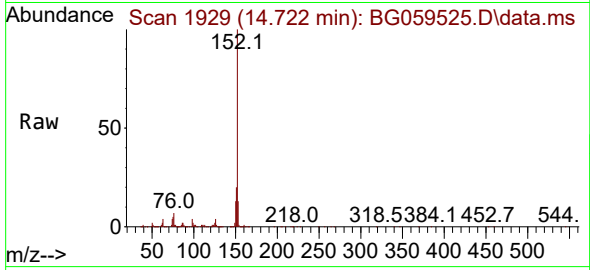
Tgt Ion:165 Resp: 84042
Ion Ratio Lower Upper
165 100
89 61.6 41.0 61.4#
121 20.2 12.3 18.5#





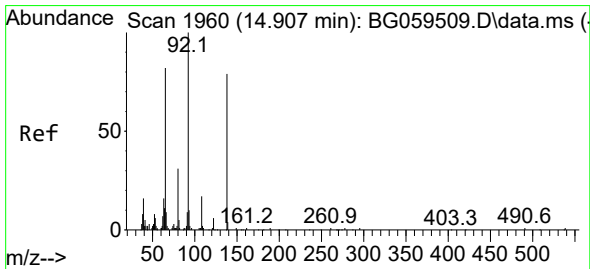
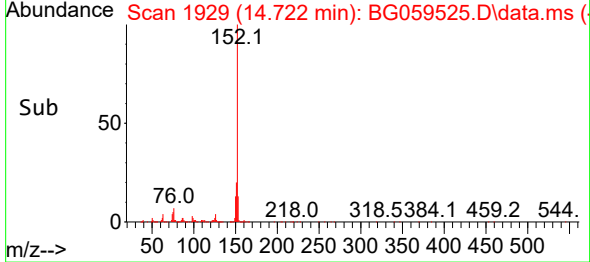
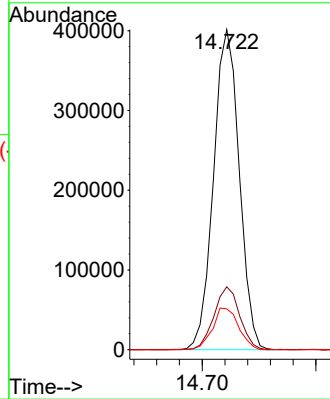
#50
 Acenaphthylene
 Concen: 24.913 ng/ul
 RT: 14.722 min Scan# 1929
 Delta R.T. -0.003 min
 Lab File: BG059525.D
 Acq: 28 Oct 2023 17:15

Instrument :
 BNA_G
 ClientSampleId :
 GCCW9MSD



Tgt Ion:152 Resp: 630623

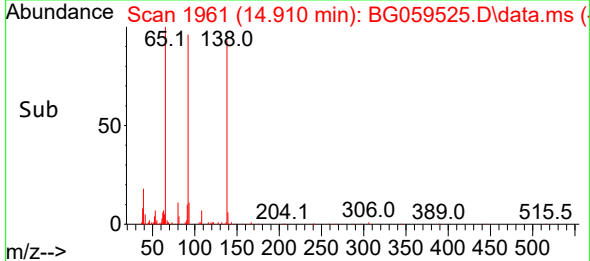
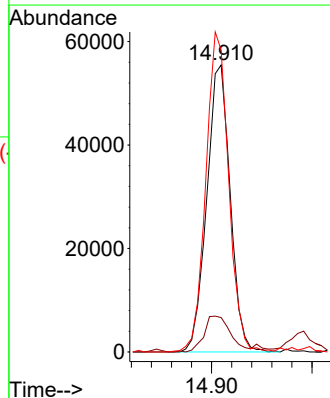
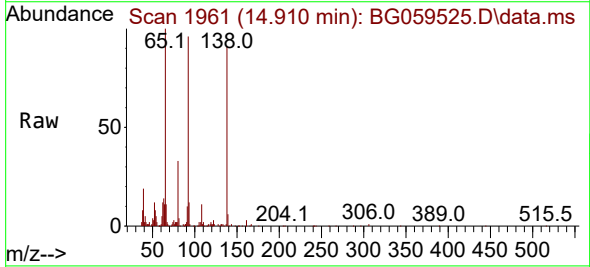
Ion	Ratio	Lower	Upper
152	100		
151	19.6	16.6	25.0
153	12.8	9.4	14.2

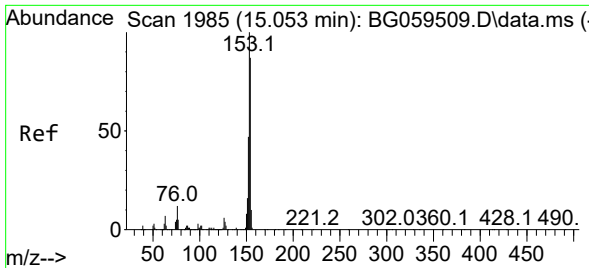


#51
 3-Nitroaniline
 Concen: 25.881 ng/ul
 RT: 14.910 min Scan# 1961
 Delta R.T. 0.003 min
 Lab File: BG059525.D
 Acq: 28 Oct 2023 17:15

Tgt Ion:138 Resp: 90006

Ion	Ratio	Lower	Upper
138	100		
108	12.0	17.1	25.7#
92	105.1	101.8	152.8



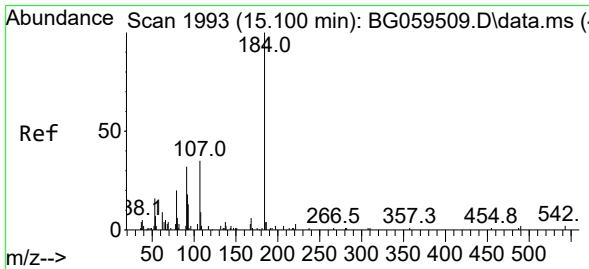
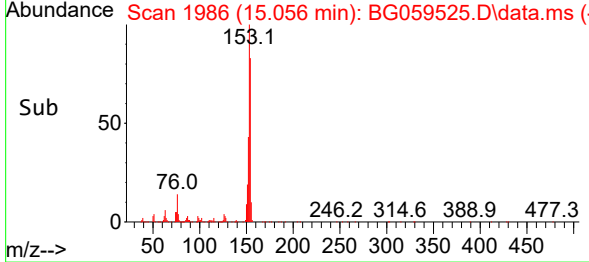
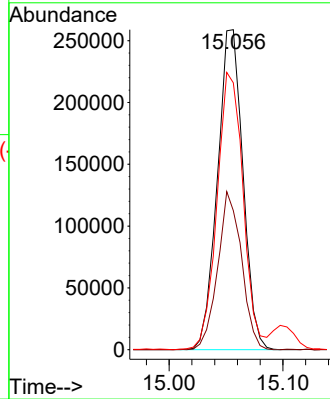
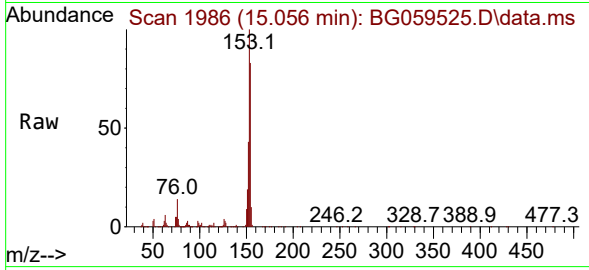


#52
 Acenaphthene
 Concen: 24.448 ng/uI
 RT: 15.056 min Scan# 1986
 Delta R.T. 0.003 min
 Lab File: BG059525.D
 Acq: 28 Oct 2023 17:15

Instrument :
 BNA_G
 ClientSampleId :
 GCCW9MSD

Tgt Ion:153 Resp: 403403

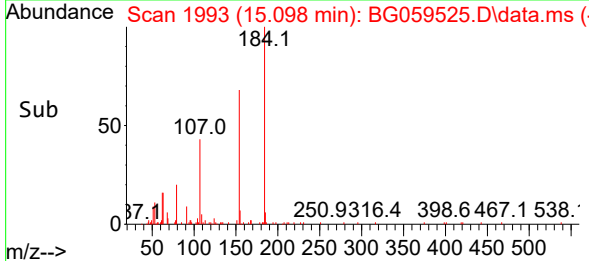
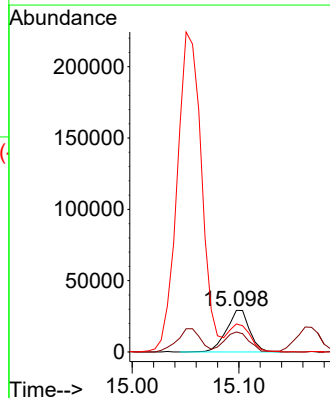
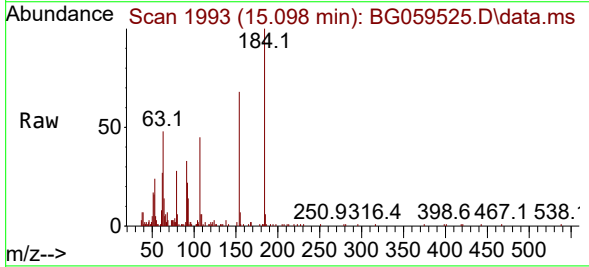
Ion	Ratio	Lower	Upper
153	100		
152	43.4	37.6	56.4
154	83.4	69.4	104.0

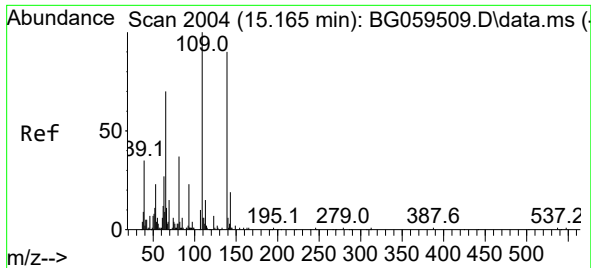


#53
 2,4-Dinitrophenol
 Concen: 27.798 ng/uI
 RT: 15.098 min Scan# 1993
 Delta R.T. -0.003 min
 Lab File: BG059525.D
 Acq: 28 Oct 2023 17:15

Tgt Ion:184 Resp: 44069

Ion	Ratio	Lower	Upper
184	100		
63	48.0	35.0	52.6
154	67.6	49.8	74.8

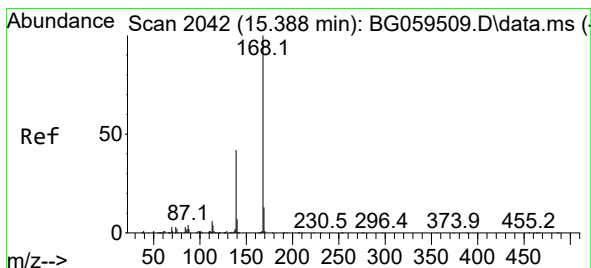
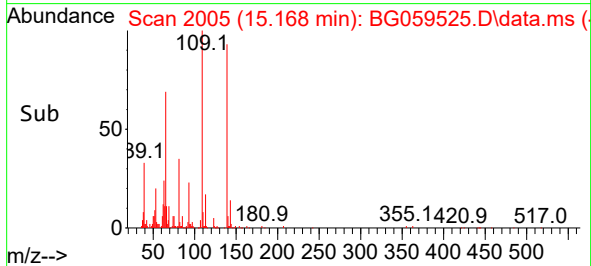
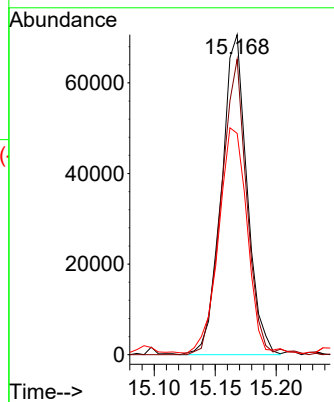
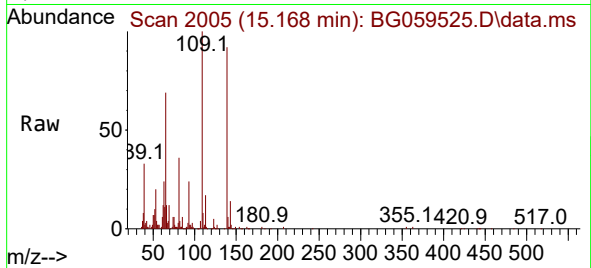




#55
4-Nitrophenol
Concen: 29.174 ng/ul
RT: 15.168 min Scan# 2004
Delta R.T. 0.003 min
Lab File: BG059525.D
Acq: 28 Oct 2023 17:15

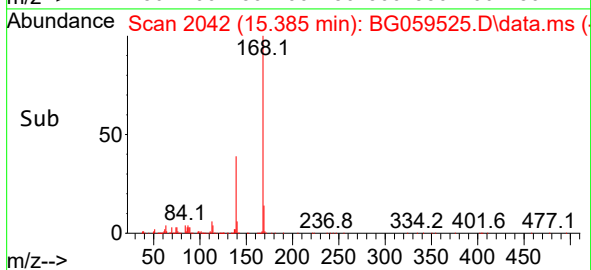
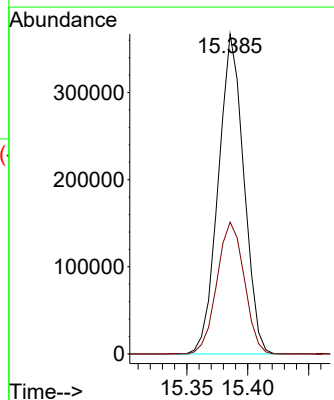
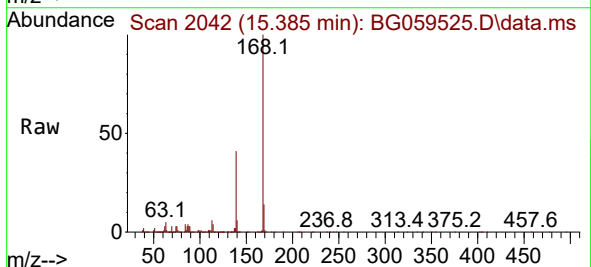
Instrument :
BNA_G
ClientSampleId :
GCCW9MSD

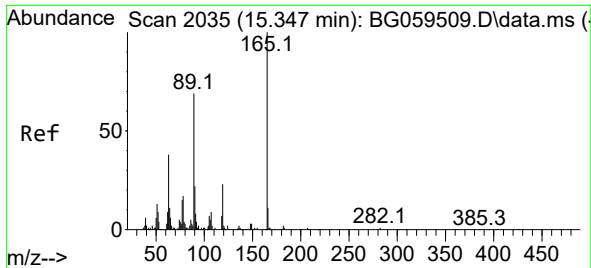
Tgt Ion:109 Resp: 103218
Ion Ratio Lower Upper
109 100
139 92.4 72.2 108.2
65 69.2 57.3 85.9



#56
Dibenzofuran
Concen: 25.033 ng/ul
RT: 15.385 min Scan# 2042
Delta R.T. -0.003 min
Lab File: BG059525.D
Acq: 28 Oct 2023 17:15

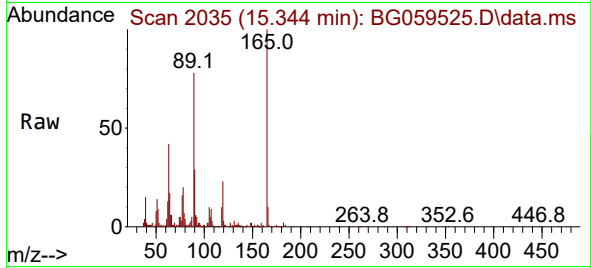
Tgt Ion:168 Resp: 535505
Ion Ratio Lower Upper
168 100
139 41.2 33.8 50.8



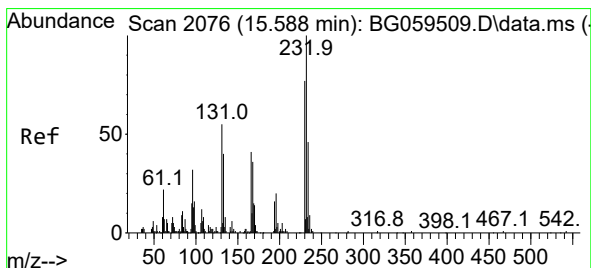
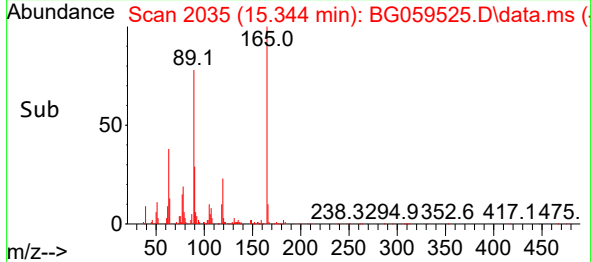
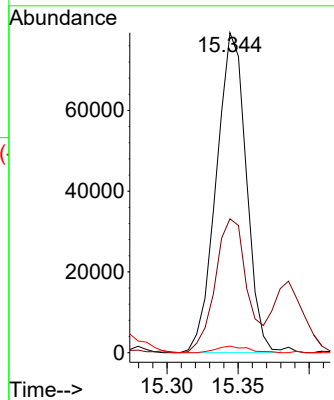


#57
 2,4-Dinitrotoluene
 Concen: 29.609 ng/ul
 RT: 15.344 min Scan# 2035
 Delta R.T. -0.003 min
 Lab File: BG059525.D
 Acq: 28 Oct 2023 17:15

Instrument :
 BNA_G
 ClientSampleId :
 GCCW9MSD

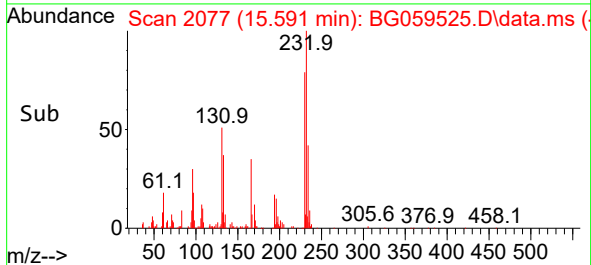
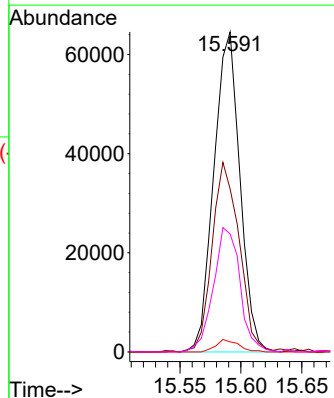
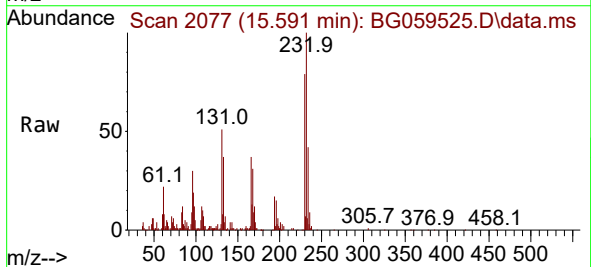


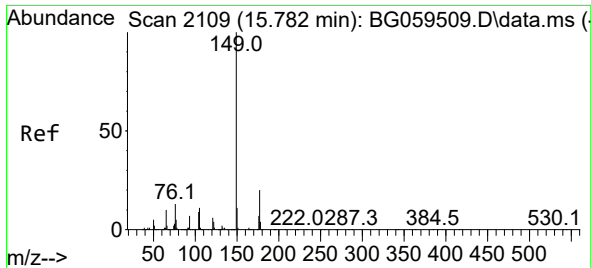
Tgt Ion:165 Resp: 116205
 Ion Ratio Lower Upper
 165 100
 63 41.8 30.9 46.3
 182 2.0 1.8 2.6



#58
 2,3,4,6-Tetrachlorophenol
 Concen: 27.415 ng/ul
 RT: 15.591 min Scan# 2077
 Delta R.T. 0.003 min
 Lab File: BG059525.D
 Acq: 28 Oct 2023 17:15

Tgt Ion:232 Resp: 96139
 Ion Ratio Lower Upper
 232 100
 131 50.9 44.2 66.2
 130 3.1 2.3 3.5
 166 36.9 32.6 48.8



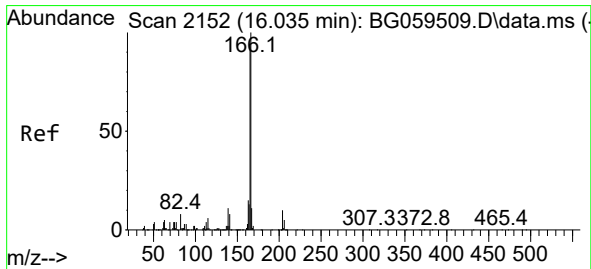
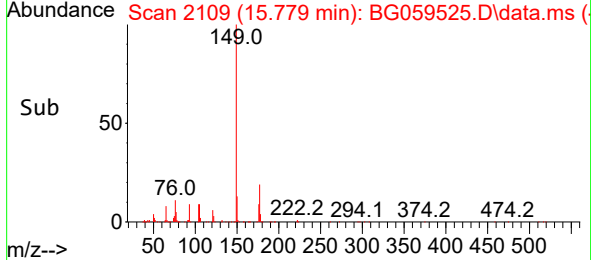
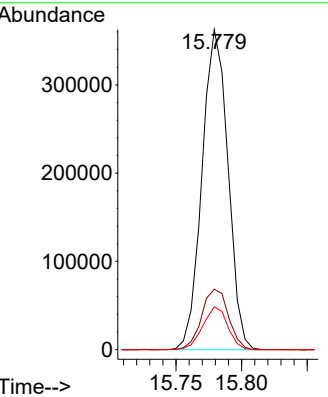
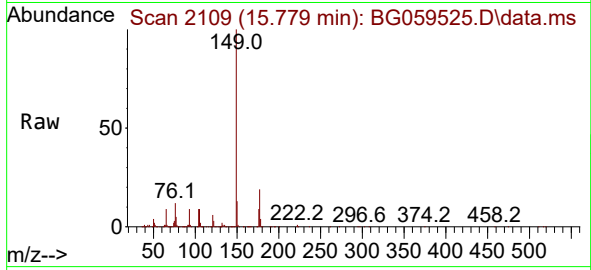


#59
 Diethylphthalate
 Concen: 24.667 ng/ul
 RT: 15.779 min Scan# 2109
 Delta R.T. -0.003 min
 Lab File: BG059525.D
 Acq: 28 Oct 2023 17:15

Instrument :
 BNA_G
 ClientSampleId :
 GCCW9MSD

Tgt Ion:149 Resp: 497697

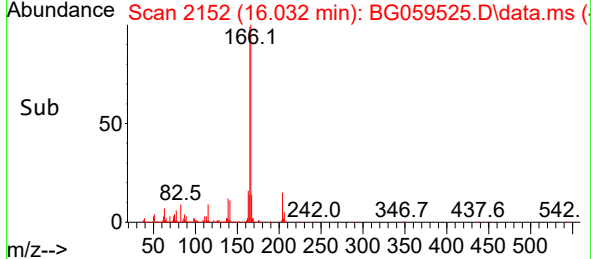
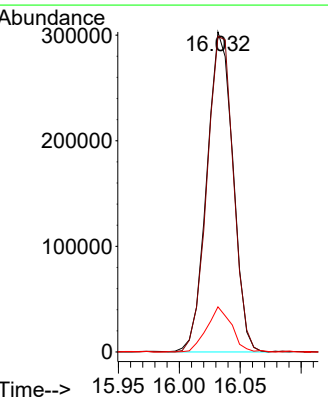
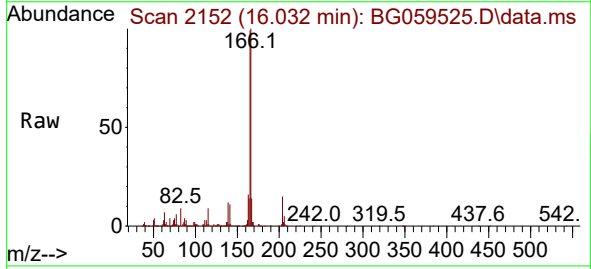
Ion	Ratio	Lower	Upper
149	100		
177	18.9	16.3	24.5
150	13.4	9.1	13.7

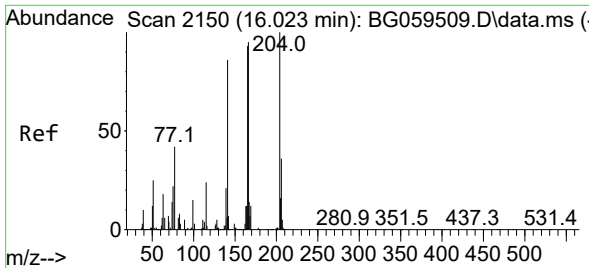


#61
 Fluorene
 Concen: 24.445 ng/ul
 RT: 16.032 min Scan# 2152
 Delta R.T. -0.003 min
 Lab File: BG059525.D
 Acq: 28 Oct 2023 17:15

Tgt Ion:166 Resp: 451436

Ion	Ratio	Lower	Upper
166	100		
165	98.6	74.4	111.6
167	14.1	9.1	13.7



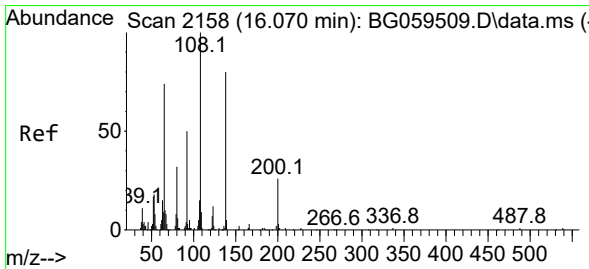
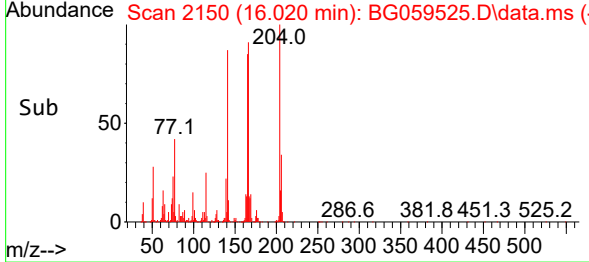
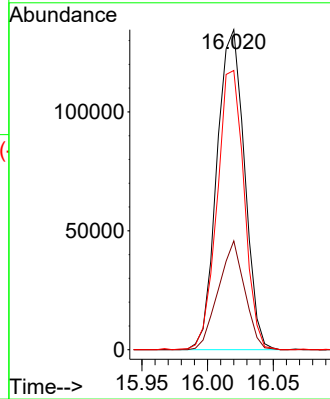
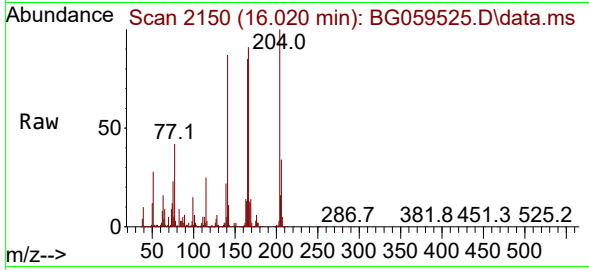


#62
 4-Chlorophenyl-phenylether
 Concen: 24.976 ng/ul
 RT: 16.020 min Scan# 2150
 Delta R.T. -0.003 min
 Lab File: BG059525.D
 Acq: 28 Oct 2023 17:15

Instrument :
 BNA_G
 ClientSampleId :
 GCCW9MSD

Tgt Ion:204 Resp: 197120

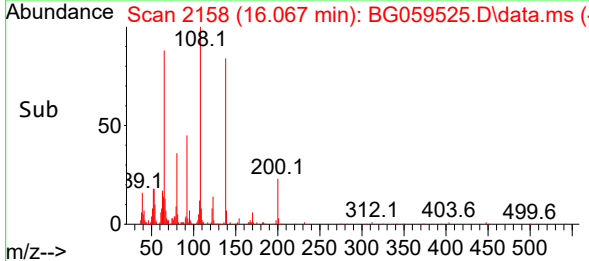
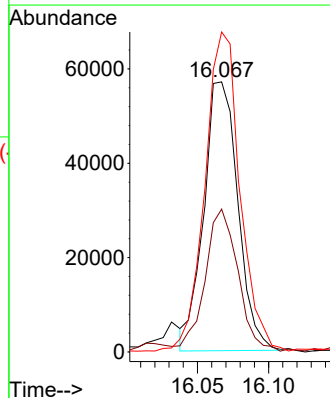
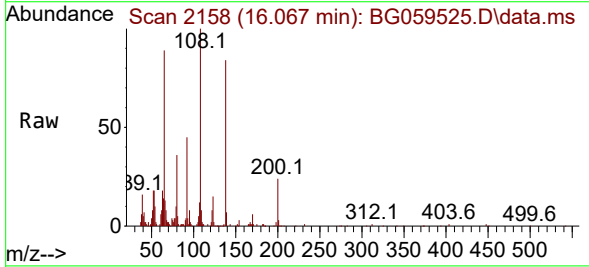
Ion	Ratio	Lower	Upper
204	100		
206	34.0	28.8	43.2
141	87.2	68.6	103.0

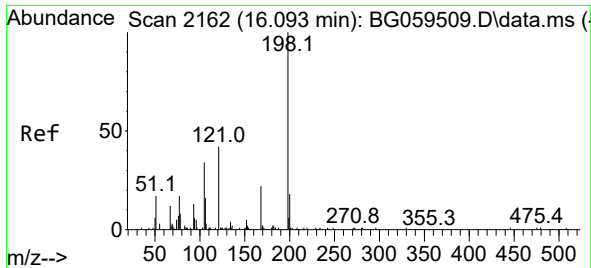


#63
 4-Nitroaniline
 Concen: 25.774 ng/ul
 RT: 16.067 min Scan# 2158
 Delta R.T. -0.003 min
 Lab File: BG059525.D
 Acq: 28 Oct 2023 17:15

Tgt Ion:138 Resp: 95127

Ion	Ratio	Lower	Upper
138	100		
92	52.9	49.8	74.8
108	118.5	100.9	151.3

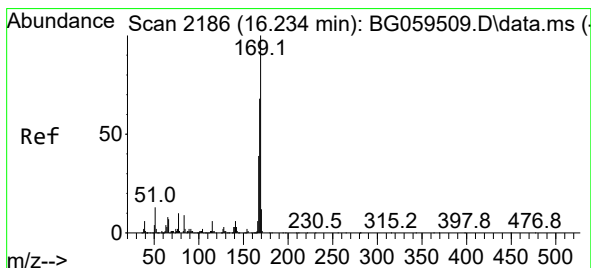
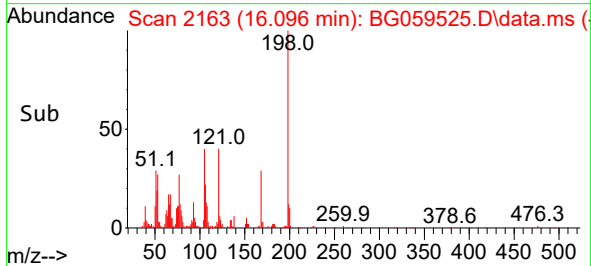
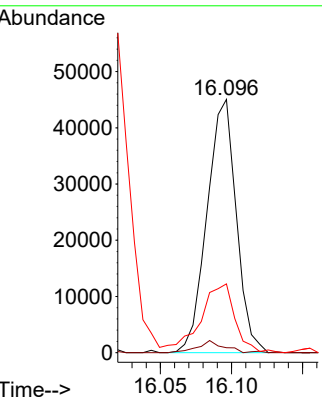
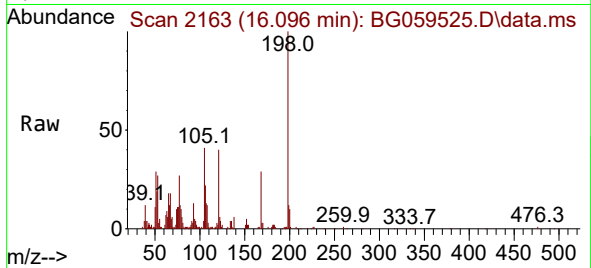




#66
 4,6-Dinitro-2-methylphenol
 Concen: 30.157 ng/ul
 RT: 16.096 min Scan# 2162
 Delta R.T. 0.003 min
 Lab File: BG059525.D
 Acq: 28 Oct 2023 17:15

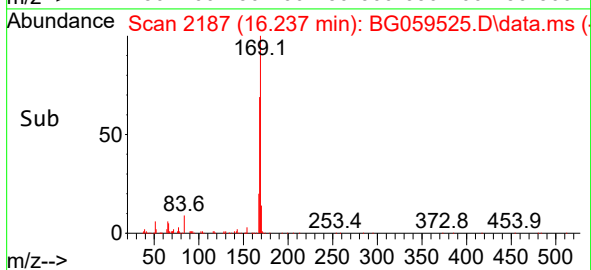
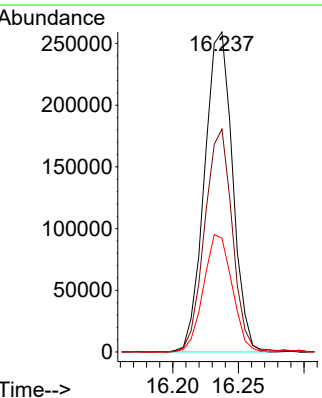
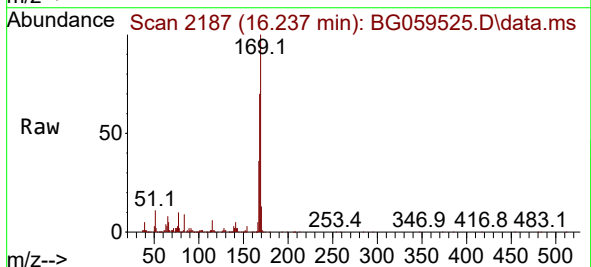
Instrument :
 BNA_G
 ClientSampleId :
 GCCW9MSD

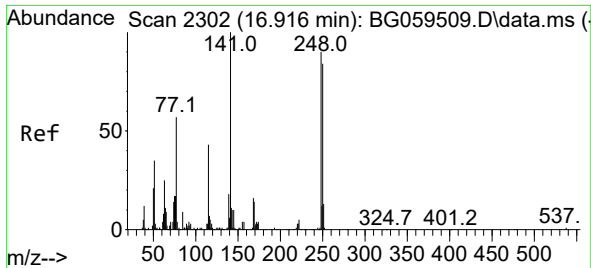
Tgt Ion:198 Resp: 64508
 Ion Ratio Lower Upper
 198 100
 182 2.0 1.4 2.0
 77 27.2 15.8 23.8#



#67
 N-Nitrosodiphenylamine
 Concen: 26.353 ng/ul
 RT: 16.237 min Scan# 2187
 Delta R.T. 0.003 min
 Lab File: BG059525.D
 Acq: 28 Oct 2023 17:15

Tgt Ion:169 Resp: 385916
 Ion Ratio Lower Upper
 169 100
 168 69.6 54.2 81.2
 167 35.6 31.3 46.9

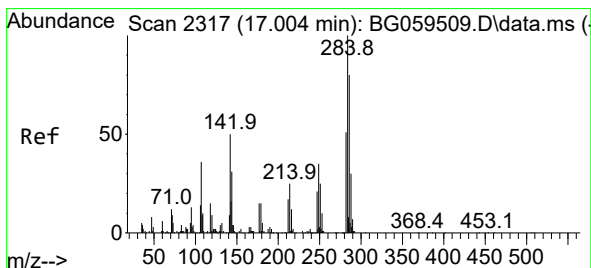
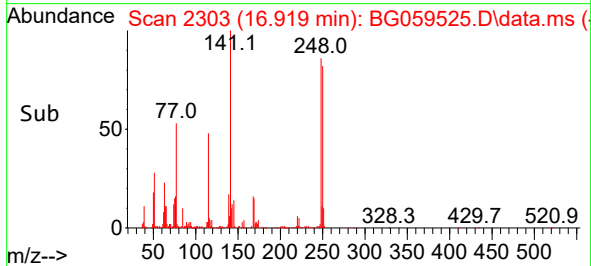
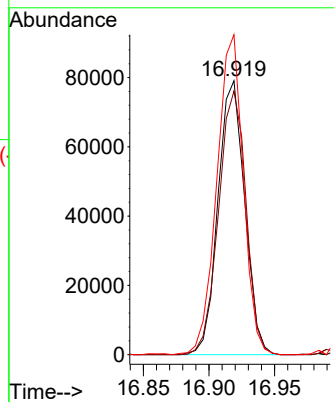
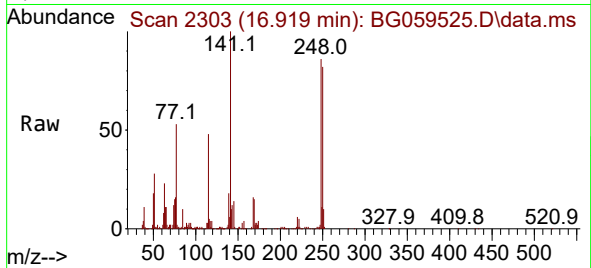




#68
 4-Bromophenyl-phenylether
 Concen: 26.116 ng/ul
 RT: 16.919 min Scan# 21
 Delta R.T. 0.003 min
 Lab File: BG059525.D
 Acq: 28 Oct 2023 17:15

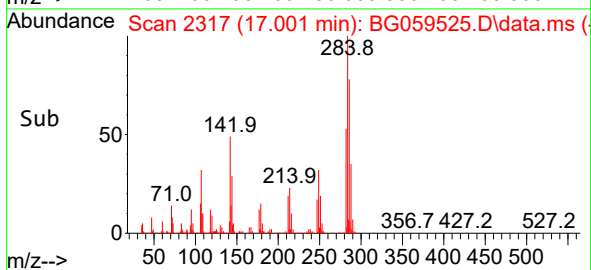
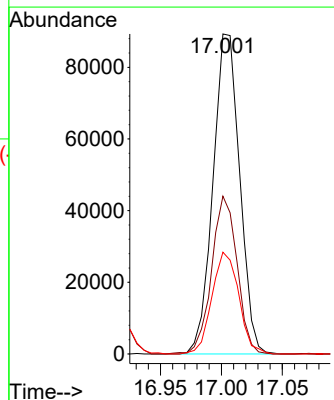
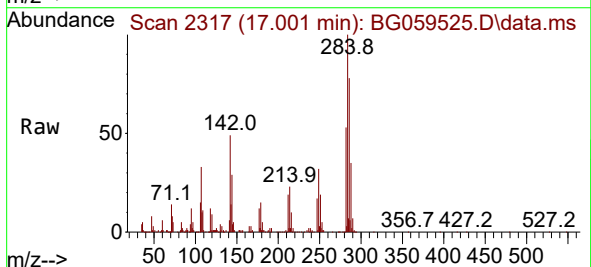
Instrument :
 BNA_G
 ClientSampleId :
 GCCW9MSD

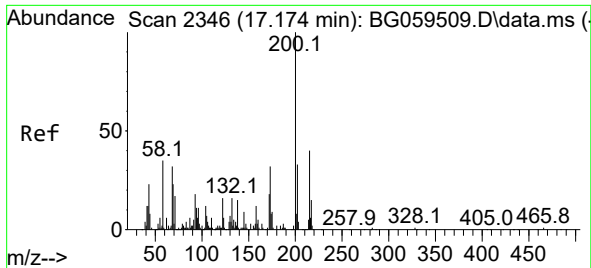
Tgt Ion:248 Resp: 112002
 Ion Ratio Lower Upper
 248 100
 250 96.2 74.2 111.2
 141 116.8 88.5 132.7



#69
 Hexachlorobenzene
 Concen: 27.483 ng/ul
 RT: 17.001 min Scan# 2317
 Delta R.T. -0.003 min
 Lab File: BG059525.D
 Acq: 28 Oct 2023 17:15

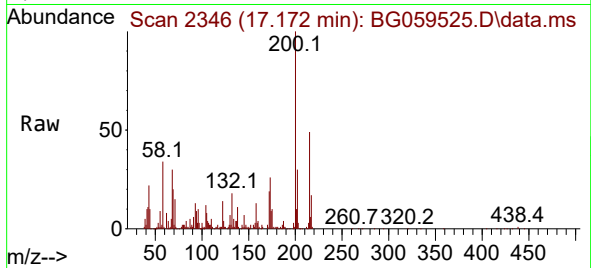
Tgt Ion:284 Resp: 136222
 Ion Ratio Lower Upper
 284 100
 142 49.3 39.6 59.4
 249 31.8 28.2 42.2



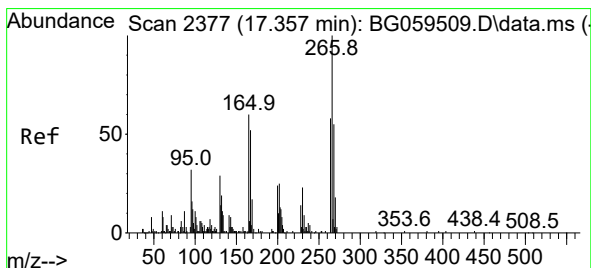
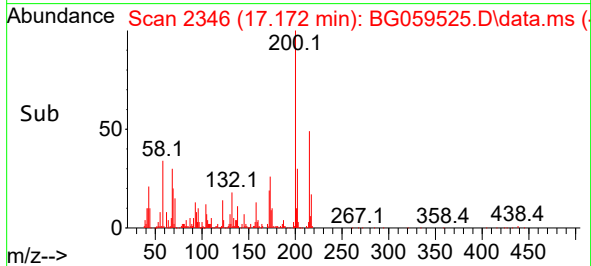
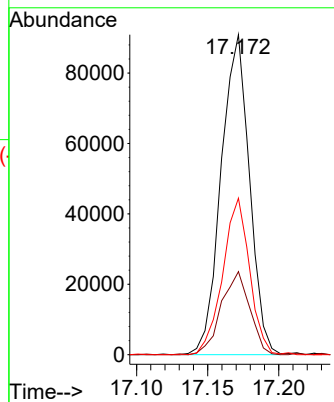


#70
 Atrazine
 Concen: 27.770 ng/ul
 RT: 17.172 min Scan# 21
 Delta R.T. -0.003 min
 Lab File: BG059525.D
 Acq: 28 Oct 2023 17:15

Instrument :
 BNA_G
 ClientSampleId :
 GCCW9MSD

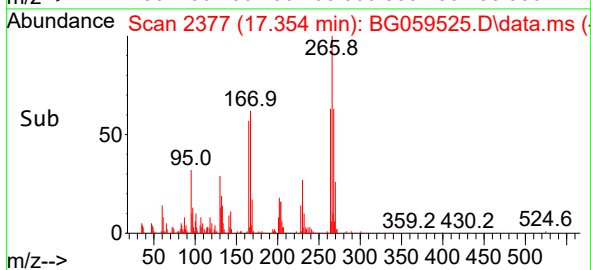
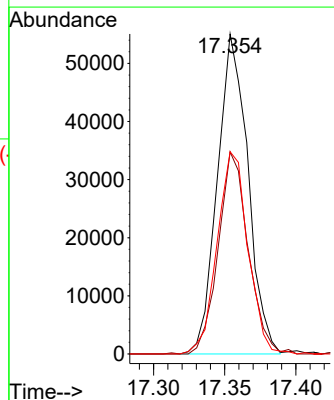
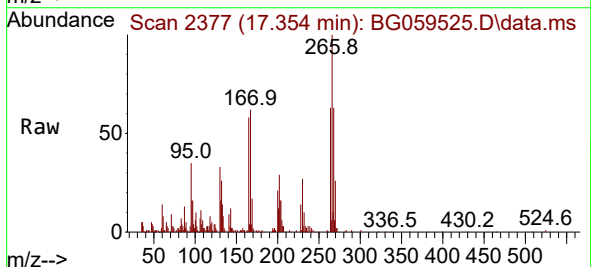


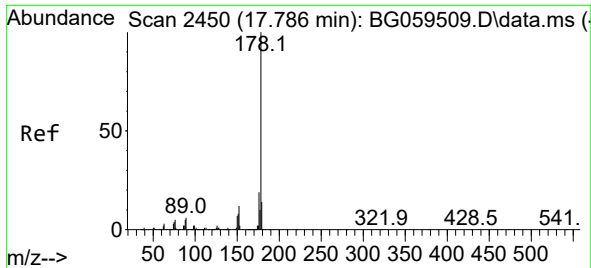
Tgt Ion:200 Resp: 126018
 Ion Ratio Lower Upper
 200 100
 173 25.9 25.7 38.5
 215 48.9 32.1 48.1#



#71
 Pentachlorophenol
 Concen: 29.041 ng/ul
 RT: 17.354 min Scan# 2377
 Delta R.T. -0.003 min
 Lab File: BG059525.D
 Acq: 28 Oct 2023 17:15

Tgt Ion:266 Resp: 82233
 Ion Ratio Lower Upper
 266 100
 264 63.1 46.2 69.2
 268 68.9 46.4 69.6



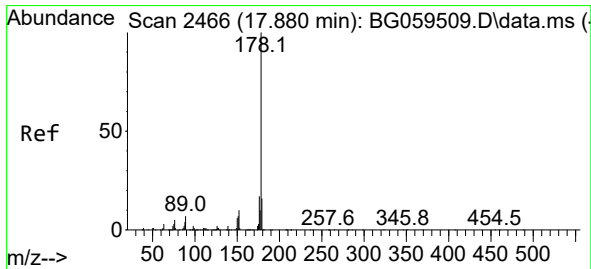
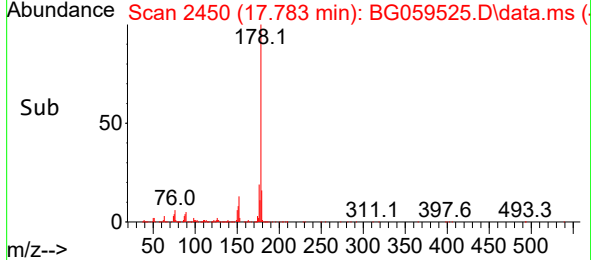
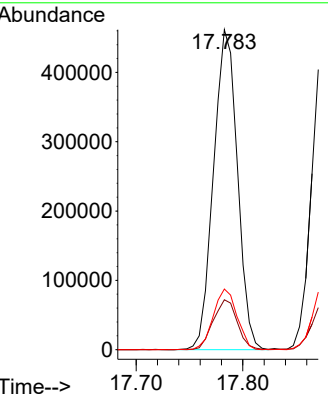
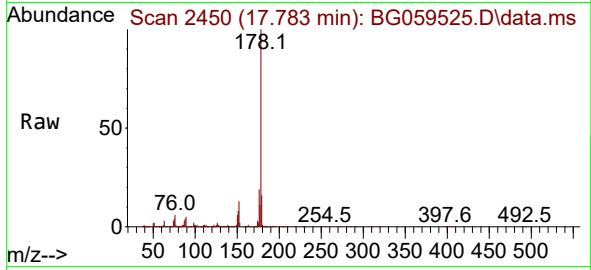


#72
 Phenanthrene
 Concen: 25.758 ng/u1
 RT: 17.783 min Scan# 2450
 Delta R.T. -0.003 min
 Lab File: BG059525.D
 Acq: 28 Oct 2023 17:15

Instrument : BNA_G
 ClientSampleId : GCCW9MSD

Tgt Ion:178 Resp: 717674

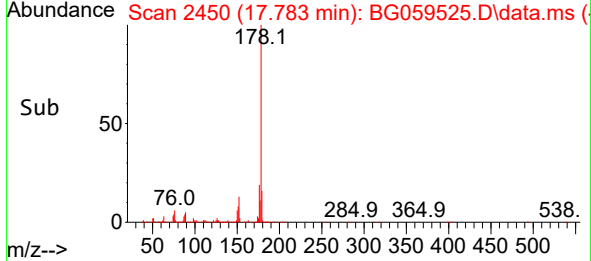
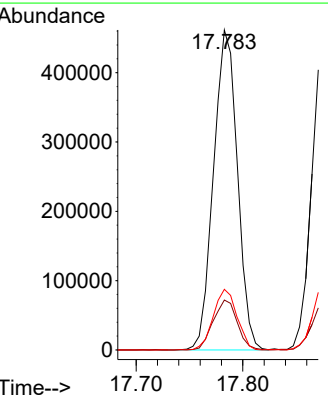
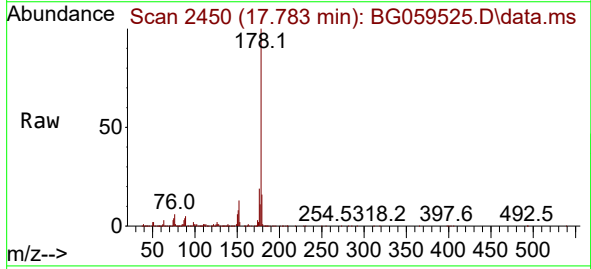
Ion	Ratio	Lower	Upper
178	100		
179	15.6	11.3	16.9
176	19.0	15.4	23.0

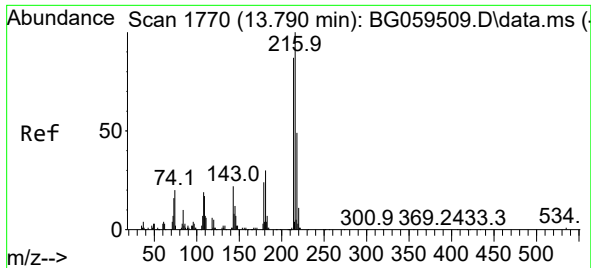


#74
 Anthracene
 Concen: 25.511 ng/u1
 RT: 17.783 min Scan# 2450
 Delta R.T. -0.097 min
 Lab File: BG059525.D
 Acq: 28 Oct 2023 17:15

Tgt Ion:178 Resp: 717674

Ion	Ratio	Lower	Upper
178	100		
179	15.6	13.1	19.7
176	19.0	13.9	20.9



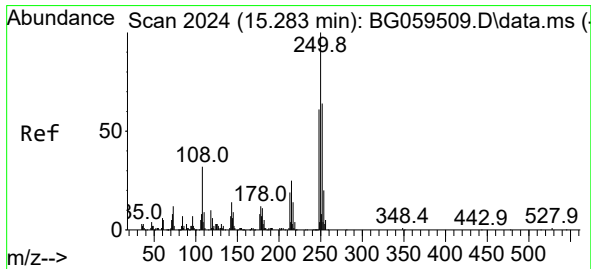
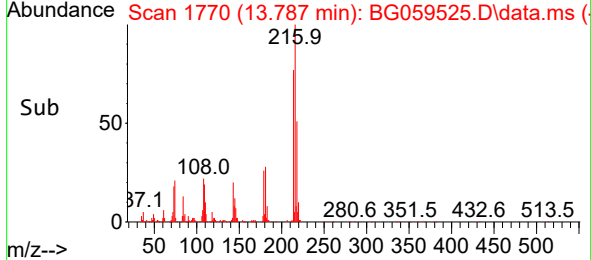
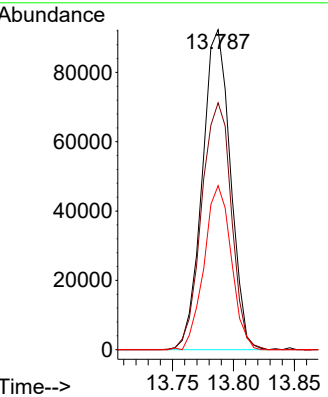
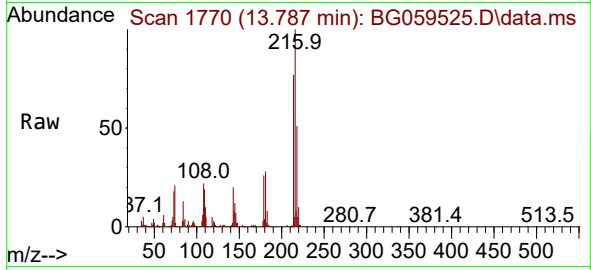


#75
 1,2,3,4-Tetrachlorobenzene
 Concen: 25.946 ng/uL
 RT: 13.787 min Scan# 1770
 Delta R.T. -0.003 min
 Lab File: BG059525.D
 Acq: 28 Oct 2023 17:15

Instrument :
 BNA_G
 ClientSampleId :
 GCCW9MSD

Tgt Ion:216 Resp: 148083

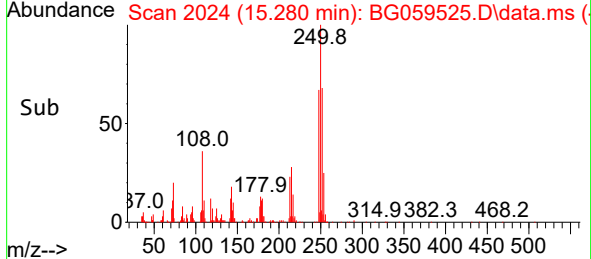
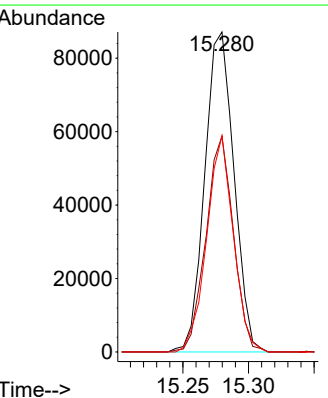
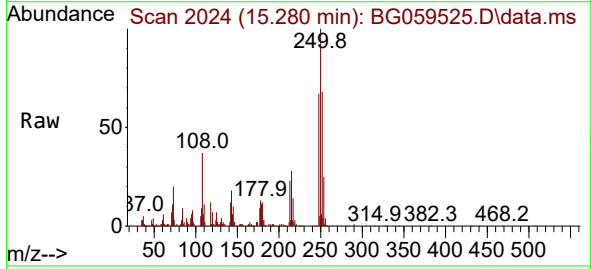
Ion	Ratio	Lower	Upper
216	100		
214	77.1	70.2	105.2
218	51.2	39.9	59.9

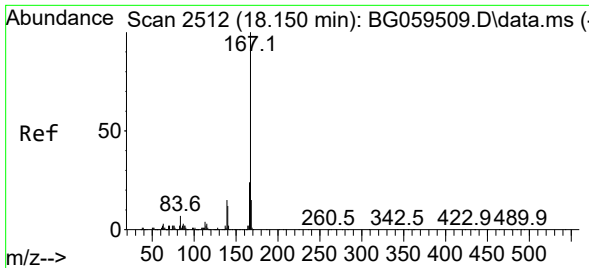


#76
 Pentachlorobenzene
 Concen: 24.848 ng/uL
 RT: 15.280 min Scan# 2024
 Delta R.T. -0.003 min
 Lab File: BG059525.D
 Acq: 28 Oct 2023 17:15

Tgt Ion:250 Resp: 134572

Ion	Ratio	Lower	Upper
250	100		
248	67.5	48.7	73.1
252	67.5	51.2	76.8



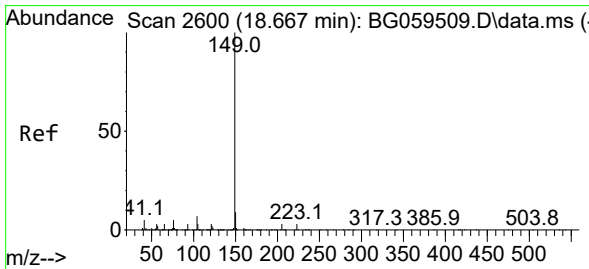
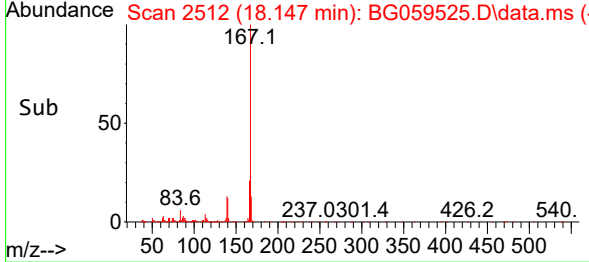
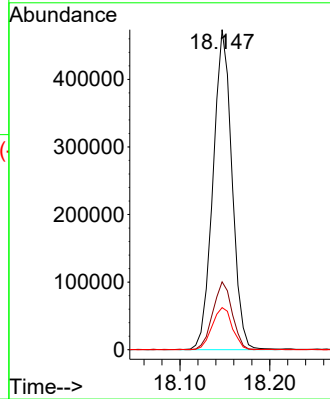
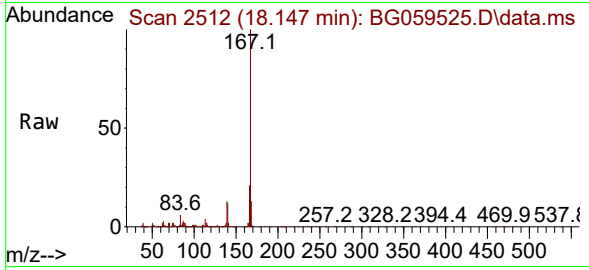


#77
 Carbazole
 Concen: 28.718 ng/ul
 RT: 18.147 min Scan# 2512
 Delta R.T. -0.003 min
 Lab File: BG059525.D
 Acq: 28 Oct 2023 17:15

Instrument :
 BNA_G
 ClientSampleId :
 GCCW9MSD

Tgt Ion:167 Resp: 694029

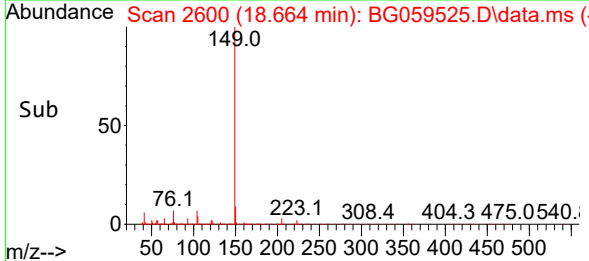
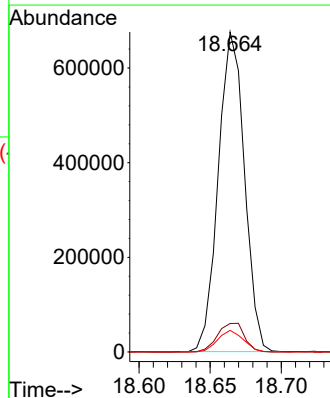
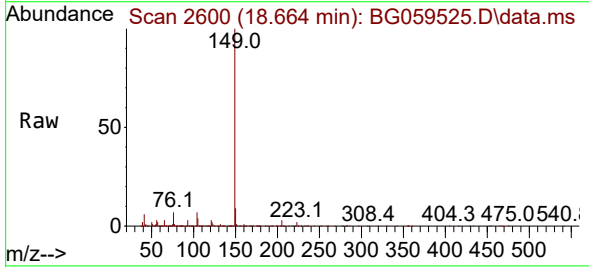
Ion	Ratio	Lower	Upper
167	100		
166	21.2	19.4	29.2
139	13.2	11.7	17.5

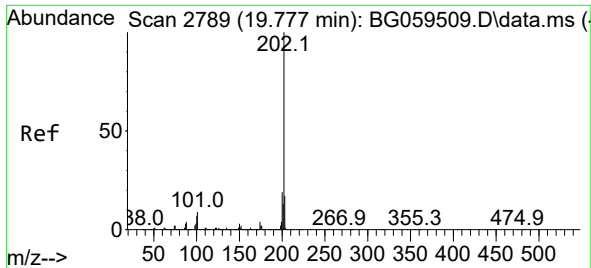


#78
 Di-n-butylphthalate
 Concen: 26.014 ng/ul
 RT: 18.664 min Scan# 2600
 Delta R.T. -0.003 min
 Lab File: BG059525.D
 Acq: 28 Oct 2023 17:15

Tgt Ion:149 Resp: 863808

Ion	Ratio	Lower	Upper
149	100		
150	8.9	7.5	11.3
104	6.7	5.3	7.9

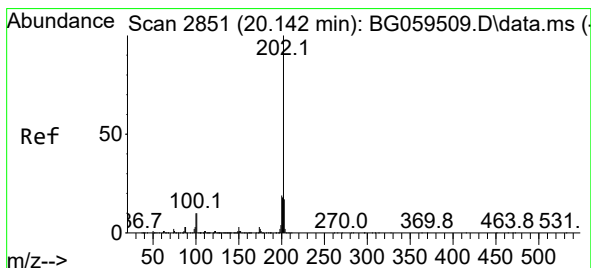
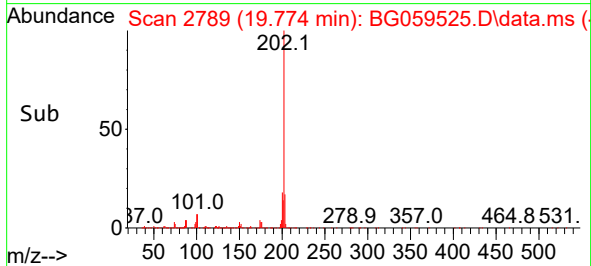
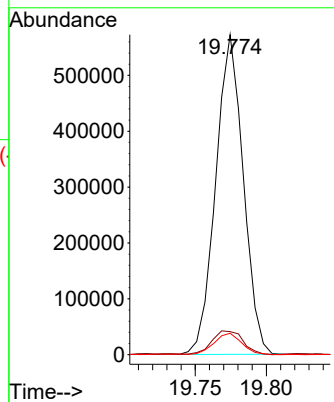
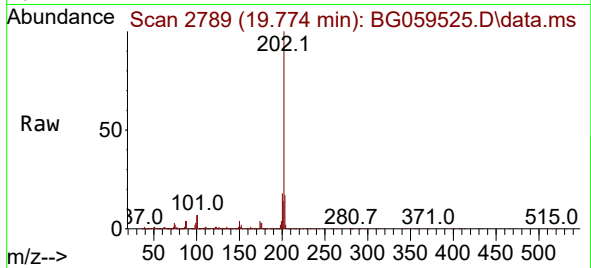




#80
 Fluoranthene
 Concen: 24.995 ng/u1
 RT: 19.774 min Scan# 2789
 Delta R.T. -0.003 min
 Lab File: BG059525.D
 Acq: 28 Oct 2023 17:15

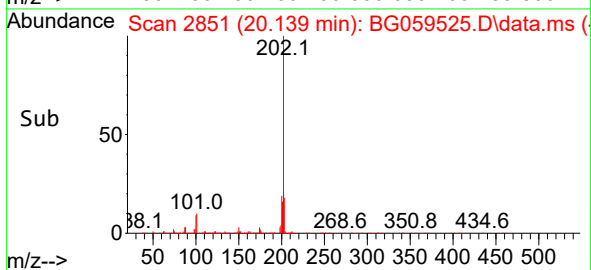
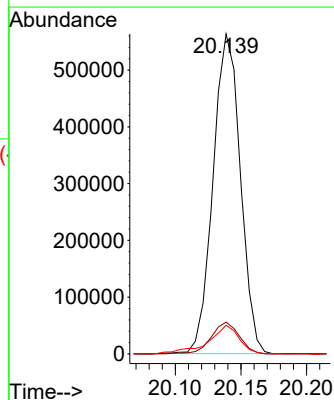
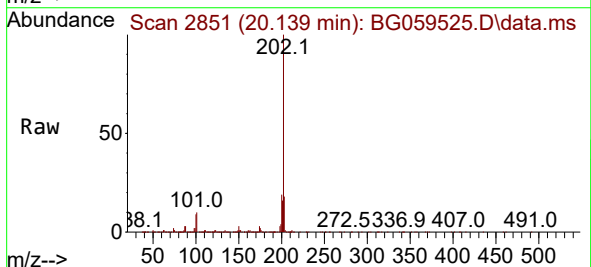
Instrument :
 BNA_G
 ClientSampleId :
 GCCW9MSD

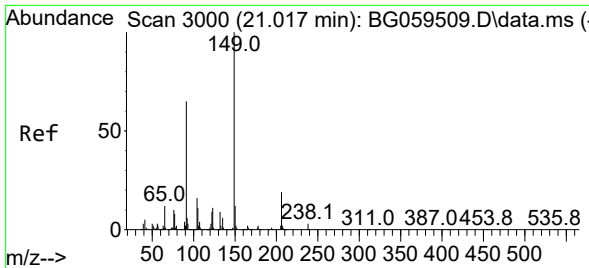
Tgt Ion	Ratio	Lower	Upper
202	100		
101	7.2	7.0	10.6
100	6.7	5.2	7.8



#82
 Pyrene
 Concen: 25.382 ng/u1
 RT: 20.139 min Scan# 2851
 Delta R.T. -0.003 min
 Lab File: BG059525.D
 Acq: 28 Oct 2023 17:15

Tgt Ion	Ratio	Lower	Upper
202	100		
101	10.0	7.9	11.9
100	8.9	7.9	11.9



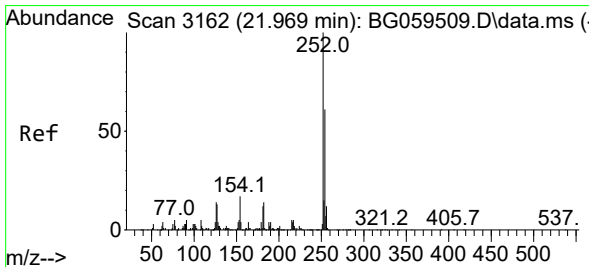
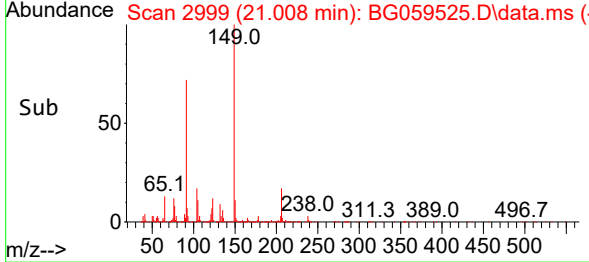
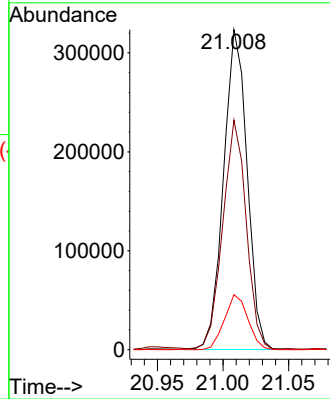
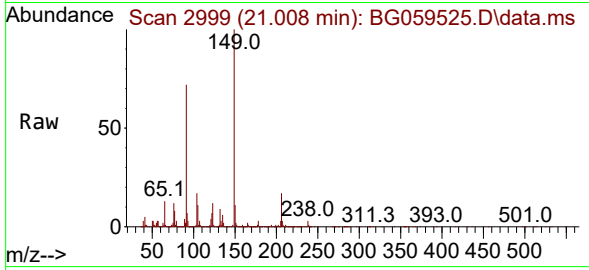


#83
 Butylbenzylphthalate
 Concen: 27.902 ng/ul
 RT: 21.008 min Scan# 21008
 Delta R.T. -0.009 min
 Lab File: BG059525.D
 Acq: 28 Oct 2023 17:15

Instrument :
 BNA_G
 ClientSampleId :
 GCCW9MSD

Tgt Ion:149 Resp: 403437

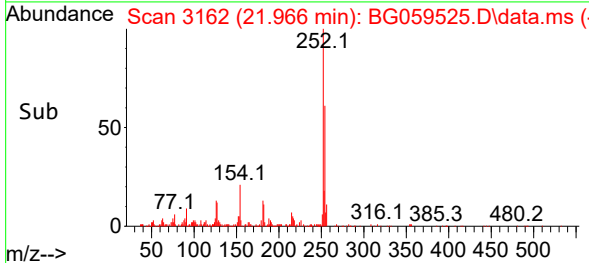
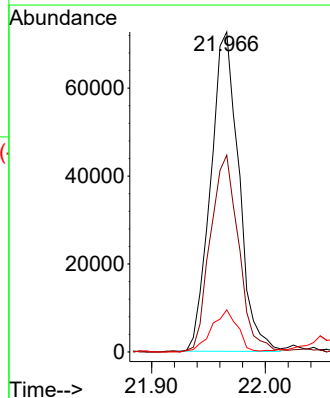
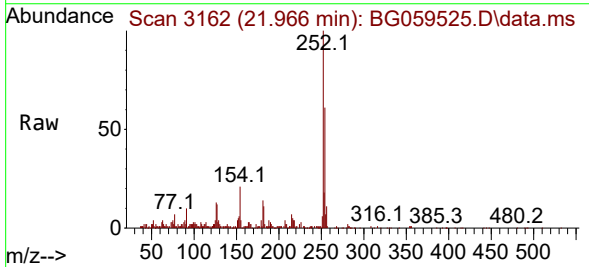
Ion	Ratio	Lower	Upper
149	100		
91	71.8	52.2	78.2
206	17.2	15.1	22.7

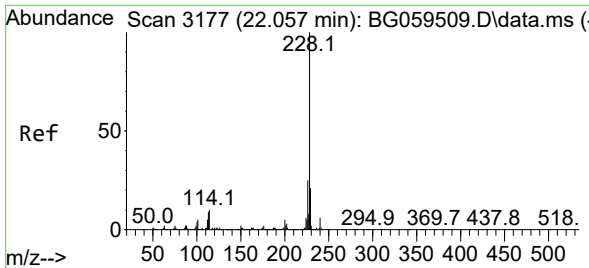


#84
 3,3'-Dichlorobenzidine
 Concen: 13.228 ng/ul
 RT: 21.966 min Scan# 3162
 Delta R.T. -0.003 min
 Lab File: BG059525.D
 Acq: 28 Oct 2023 17:15

Tgt Ion:252 Resp: 125136

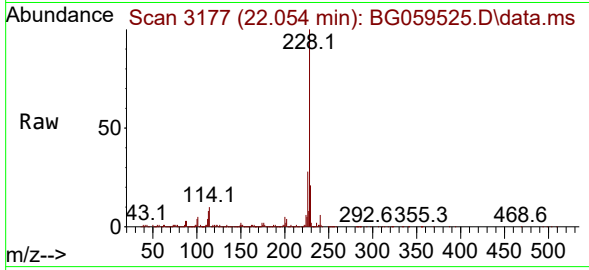
Ion	Ratio	Lower	Upper
252	100		
254	61.5	48.9	73.3
126	13.1	11.5	17.3



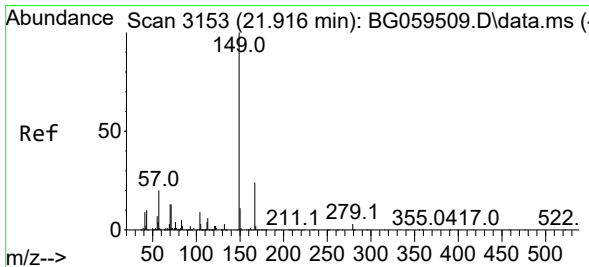
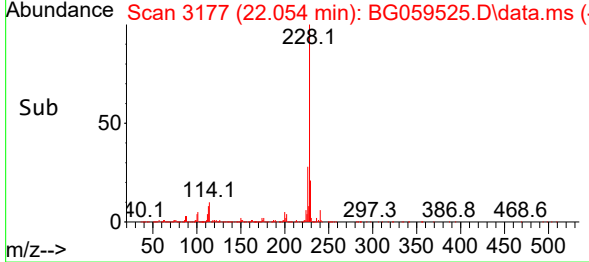
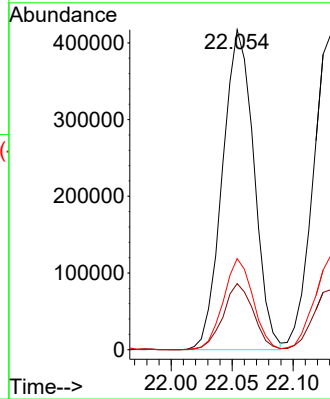


#85
 Benzo(a)anthracene
 Concen: 25.016 ng/ul
 RT: 22.054 min Scan# 3177
 Delta R.T. -0.003 min
 Lab File: BG059525.D
 Acq: 28 Oct 2023 17:15

Instrument :
 BNA_G
 ClientSampleId :
 GCCW9MSD

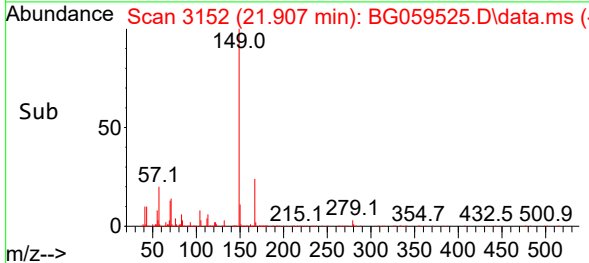
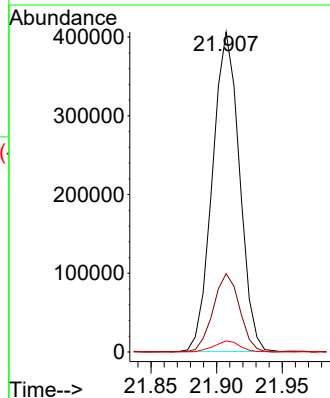
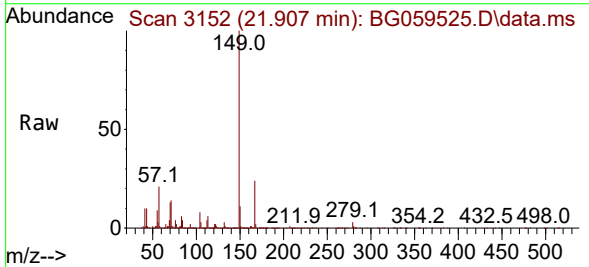


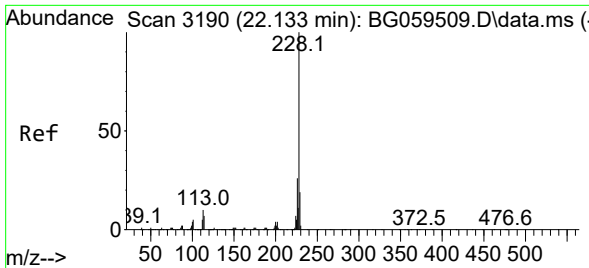
Tgt Ion:228 Resp: 748882
 Ion Ratio Lower Upper
 228 100
 229 20.6 16.7 25.1
 226 28.5 20.3 30.5



#86
 Bis(2-ethylhexyl)phthalate
 Concen: 26.947 ng/ul
 RT: 21.907 min Scan# 3152
 Delta R.T. -0.009 min
 Lab File: BG059525.D
 Acq: 28 Oct 2023 17:15

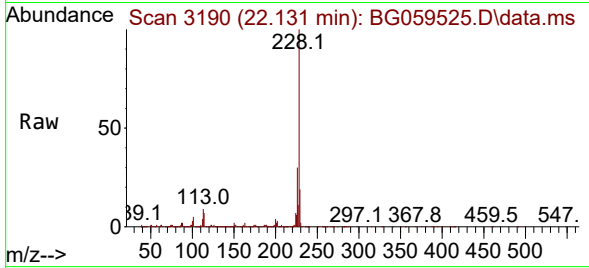
Tgt Ion:149 Resp: 581372
 Ion Ratio Lower Upper
 149 100
 167 24.5 19.4 29.2
 279 3.5 2.2 3.4#





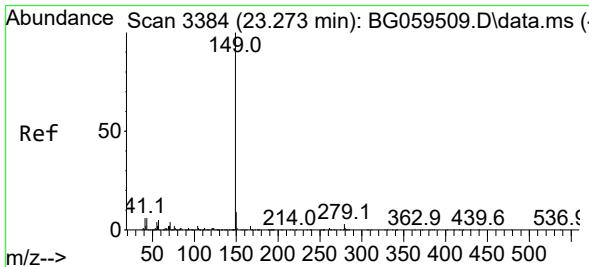
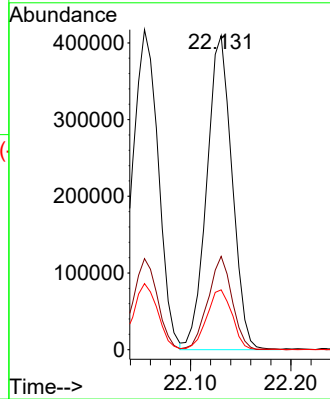
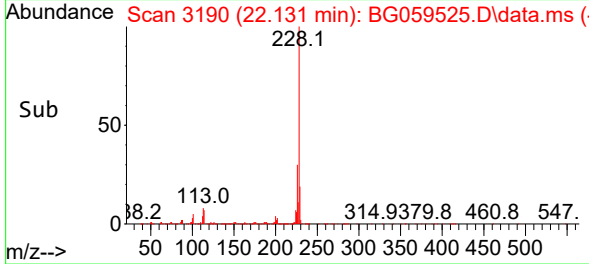
#87
 Chrysene
 Concen: 25.759 ng/u1
 RT: 22.131 min Scan# 3190
 Delta R.T. -0.003 min
 Lab File: BG059525.D
 Acq: 28 Oct 2023 17:15

Instrument :
 BNA_G
 ClientSampleId :
 GCCW9MSD



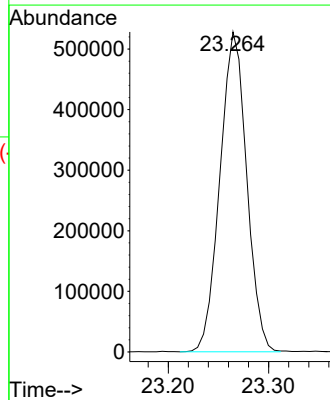
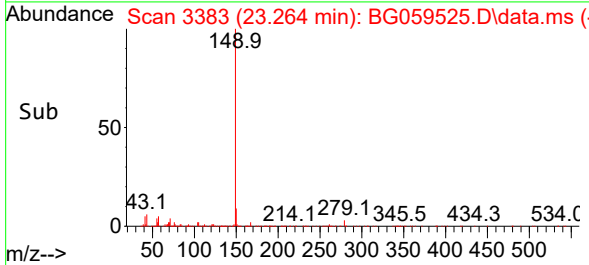
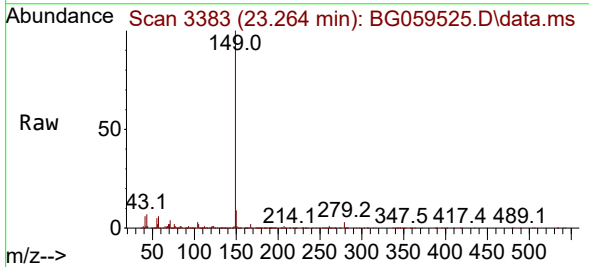
Tgt Ion:228 Resp: 717318

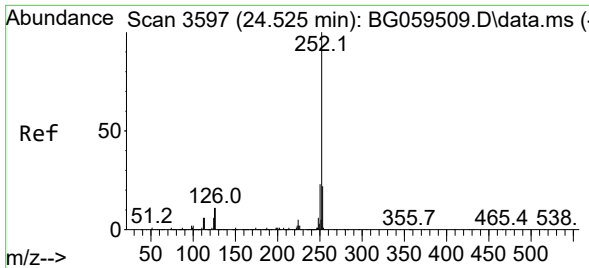
Ion	Ratio	Lower	Upper
228	100		
226	29.7	21.0	31.4
229	19.1	15.1	22.7



#89
 Di-n-octyl phthalate
 Concen: 28.363 ng/u1
 RT: 23.264 min Scan# 3383
 Delta R.T. -0.009 min
 Lab File: BG059525.D
 Acq: 28 Oct 2023 17:15

Tgt Ion:149 Resp: 976335



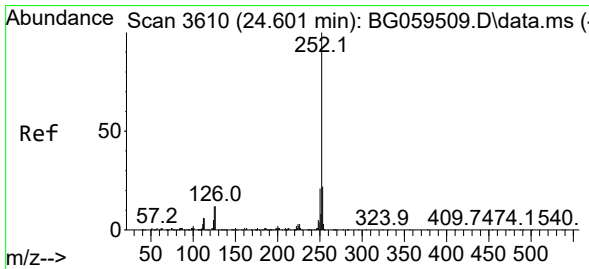
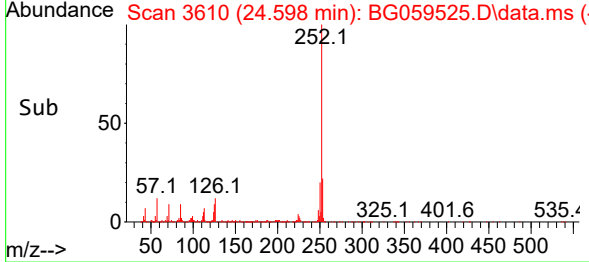
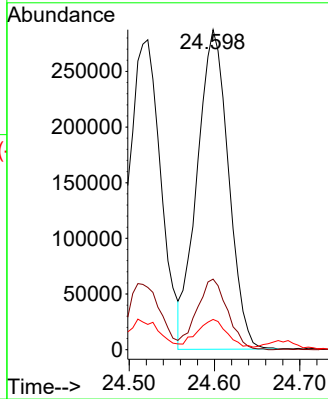
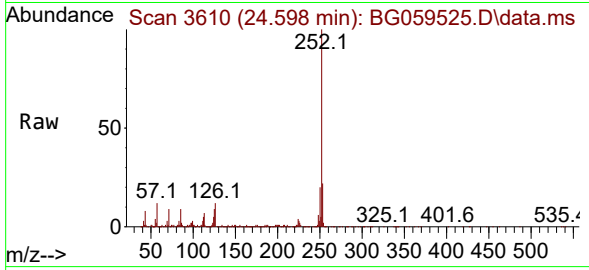


#90
 Benzo(b)fluoranthene
 Concen: 25.765 ng/ul
 RT: 24.598 min Scan# 3610
 Delta R.T. 0.074 min
 Lab File: BG059525.D
 Acq: 28 Oct 2023 17:15

Instrument : BNA_G
 ClientSampleId : GCCW9MSD

Tgt Ion:252 Resp: 734300

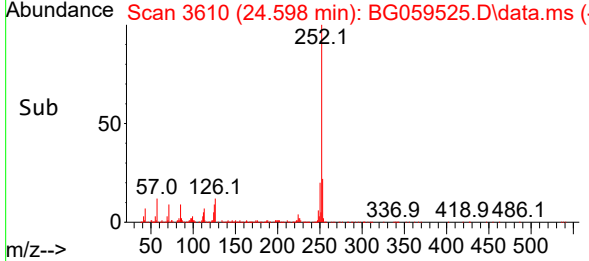
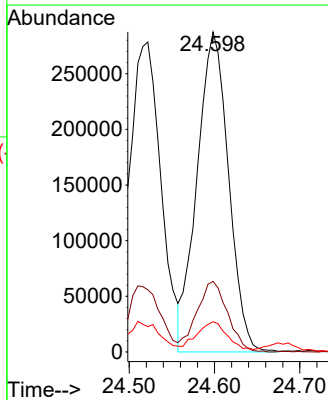
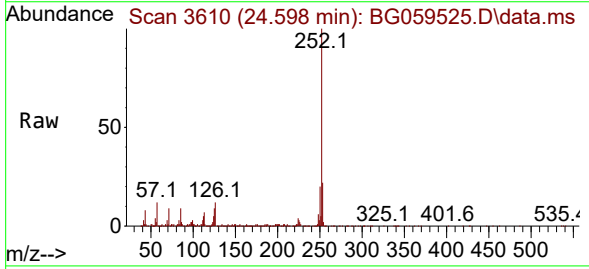
Ion	Ratio	Lower	Upper
252	100		
253	22.0	17.8	26.8
125	9.4	8.6	13.0

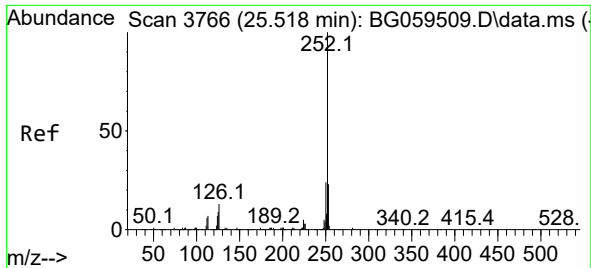


#91
 Benzo(k)fluoranthene
 Concen: 25.904 ng/ul
 RT: 24.598 min Scan# 3610
 Delta R.T. -0.003 min
 Lab File: BG059525.D
 Acq: 28 Oct 2023 17:15

Tgt Ion:252 Resp: 737420

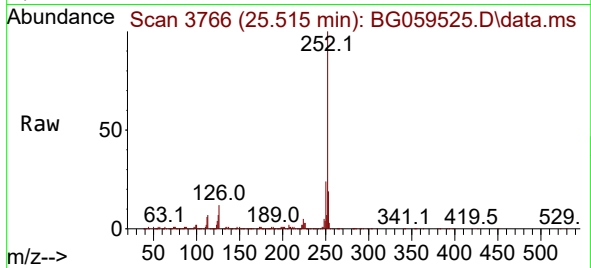
Ion	Ratio	Lower	Upper
252	100		
253	22.0	17.9	26.9
125	9.4	7.9	11.9



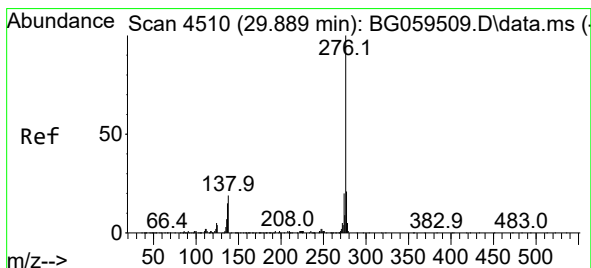
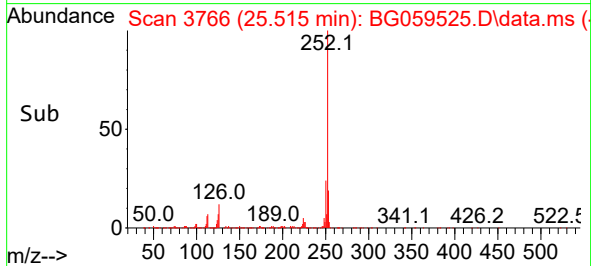
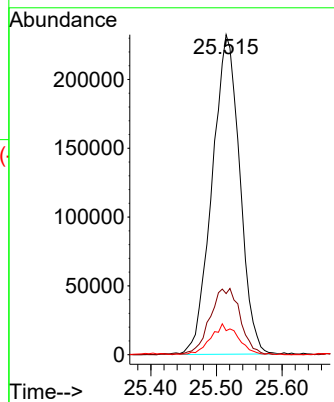


#93
 Benzo(a)pyrene
 Concen: 25.201 ng/ul
 RT: 25.515 min Scan# 31
 Delta R.T. -0.003 min
 Lab File: BG059525.D
 Acq: 28 Oct 2023 17:15

Instrument :
 BNA_G
 ClientSampleId :
 GCCW9MSD

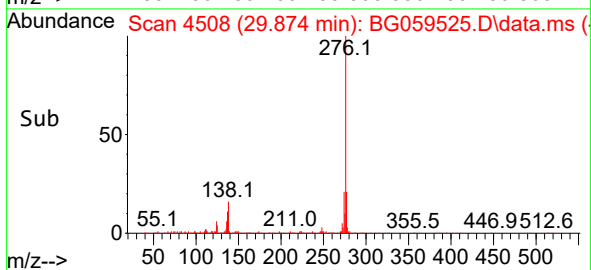
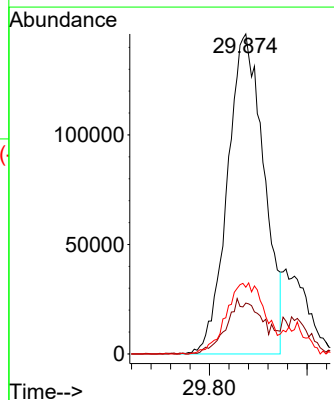
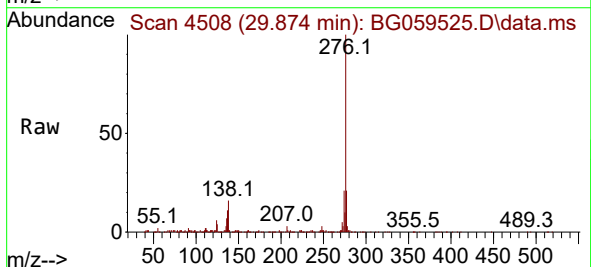


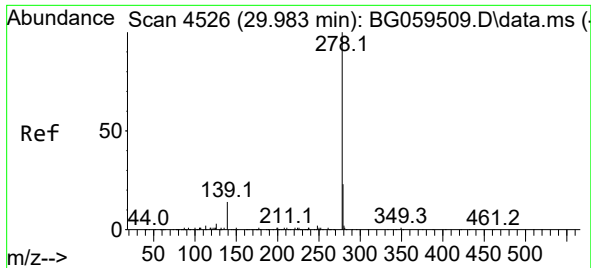
Tgt Ion:252 Resp: 678806
 Ion Ratio Lower Upper
 252 100
 253 19.1 18.5 27.7
 125 7.5 7.6 11.4#



#94
 Indeno(1,2,3-cd)pyrene
 Concen: 22.177 ng/ul
 RT: 29.874 min Scan# 4508
 Delta R.T. -0.015 min
 Lab File: BG059525.D
 Acq: 28 Oct 2023 17:15

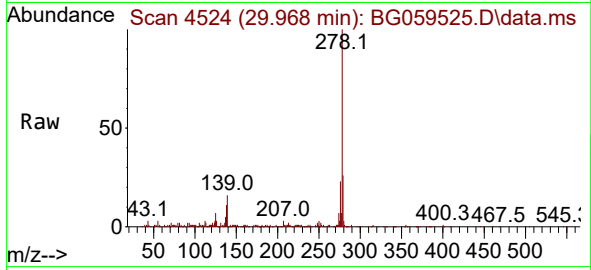
Tgt Ion:276 Resp: 757147
 Ion Ratio Lower Upper
 276 100
 138 15.9 15.3 22.9
 277 20.9 16.4 24.6



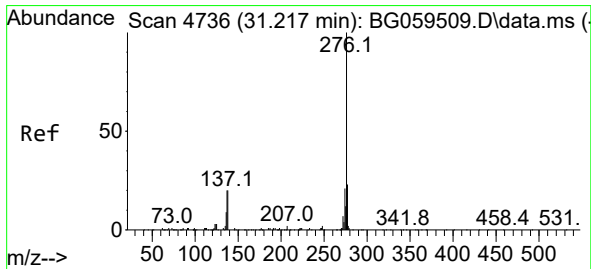
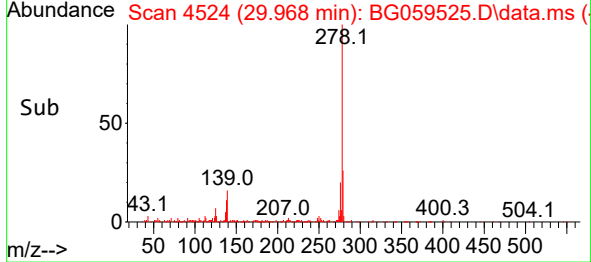
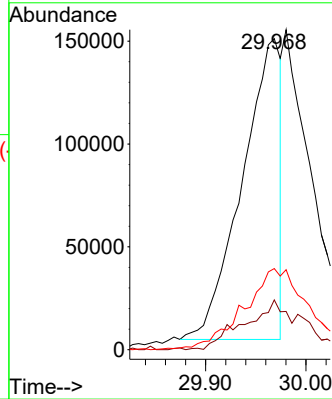


#95
 Dibenzo(a,h)anthracene
 Concen: 13.905 ng/ul
 RT: 29.968 min Scan# 41
 Delta R.T. -0.015 min
 Lab File: BG059525.D
 Acq: 28 Oct 2023 17:15

Instrument :
 BNA_G
 ClientSampleId :
 GCCW9MSD



Tgt Ion:278 Resp: 392104
 Ion Ratio Lower Upper
 278 100
 139 16.0 11.0 16.6
 279 26.1 18.3 27.5



#96
 Benzo(g,h,i)perylene
 Concen: 23.445 ng/ul
 RT: 31.208 min Scan# 4735
 Delta R.T. -0.009 min
 Lab File: BG059525.D
 Acq: 28 Oct 2023 17:15

Tgt Ion:276 Resp: 655124
 Ion Ratio Lower Upper
 276 100
 138 16.6 16.2 24.2
 277 21.9 18.2 27.4

