

Data Path : Z:\svoasrv\HPCHEM1\BNA_G\Data\BG103023\
 Data File : BG059548.D
 Acq On : 30 Oct 2023 16:20
 Operator : MA/JU
 Sample : 04696-03
 Misc : SFAM-MDL-SOIL-01
 ALS Vial : 5 Sample Multiplier: 1

Instrument :
 BNA_G
 ClientSampleId :
 MDL-SOIL-QT4-2023-07

Quant Time: Oct 30 17:24:38 2023
 Quant Method : Z:\svoasrv\HPCHEM1\BNA_G\Methods\SFAM-EPA-BG102723.MA.M
 Quant Title : SVOA CALIBRATION
 QLast Update : Sat Oct 28 03:56:42 2023
 Response via : Initial Calibration

Manual Integrations
 APPROVED

Reviewed By :Yogesh Patel 11/01/2023
 Supervised By :mohammad ahmed 11/01/2023

Compound	R.T.	QIon	Response	Conc	Units	Dev(Min)
Internal Standards						
1) 1,4-Dichlorobenzene-d4	8.364	152	82531	20.000	ng/ul	0.00
20) Naphthalene-d8	11.213	136	344406	20.000	ng/ul	0.00
38) Acenaphthene-d10	14.991	164	225077	20.000	ng/ul	0.00
64) Phenanthrene-d10	17.747	188	508073	20.000	ng/ul	0.00
79) Chrysene-d12	22.083	240	469066	20.000	ng/ul	0.00
88) Perylene-d12	25.696	264	496078	20.000	ng/ul	0.00
System Monitoring Compounds						
3) 1,4-Dioxane-d8	3.651	96	10526	4.772	ng/uL	0.00
4) Pyridine-d5	4.092	84	132760	21.538	ng/ul	0.00
7) Phenol-d5	7.470	99	189009	22.286	ng/ul	0.00
9) Bis-(2-Chloroethyl)eth...	7.676	67	81349	20.883	ng/ul	0.00
11) 2-Chlorophenol-d4	7.876	132	159502	23.182	ng/ul	0.00
15) 4-Methylphenol-d8	9.045	113	151924	22.579	ng/ul	0.00
21) Nitrobenzene-d5	9.556	128	72904	29.771	ng/ul	0.00
24) 2-Nitrophenol-d4	10.285	143	76644	30.487	ng/ul	0.00
28) 2,4-Dichlorophenol-d3	10.808	165	141227	25.498	ng/ul	0.00
31) 4-Chloroaniline-d4	11.354	131	207397	22.746	ng/ul	0.00
46) Dimethylphthalate-d6	14.386	166	418298	20.513	ng/ul	0.00
49) Acenaphthylene-d8	14.697	160	525934	21.977	ng/ul	0.00
54) 4-Nitrophenol-d4	15.156	143	84232	24.088	ng/ul	0.00
60) Fluorene-d10	15.978	176	407582	23.388	ng/ul	0.00
65) 4,6-Dinitro-2-methylph...	16.084	200	56342	23.417	ng/ul	0.00
73) Anthracene-d10	17.847	188	606233	22.024	ng/ul	0.00
81) Pyrene-d10	20.115	212	711153	21.812	ng/ul	0.00
92) Benzo(a)pyrene-d12	25.444	264	656993	22.491	ng/ul	0.00
Target Compounds						
5) Pyridine	4.110	79	21249	3.495	ng/ul#	77
6) Benzaldehyde	7.506	77	17714	4.637	ng/ul	94
8) Phenol	7.500	94	28793	3.601	ng/ul	95
10) Bis(2-Chloroethyl)ether	7.776	93	22222	3.790	ng/ul	93
12) 2-Chlorophenol	7.905	128	26584	3.897	ng/ul#	82
13) 2-Methylphenol	8.781	108	21533	3.231	ng/ul	93
14) 2,2'-oxybis(1-Chloropr...	8.881	45	19504m	3.535	ng/ul	
16) Acetophenone	9.198	105	38695	3.648	ng/ul#	77
17) N-Nitroso-di-n-propyla...	9.163	70	15640	3.130	ng/ul#	85
18) 4-Methylphenol	9.110	108	26617m	3.753	ng/ul	
19) Hexachloroethane	9.451	117	8504	3.139	ng/ul#	72
22) Nitrobenzene	9.609	77	23858	4.514	ng/ul#	98
23) Isophorone	10.114	82	49910	3.750	ng/ul#	85
25) 2-Nitrophenol	10.314	139	12080	4.468	ng/ul#	77
26) 2,4-Dimethylphenol	10.338	107	27563	3.876	ng/ul#	76
27) Bis(2-Chloroethoxy)met...	10.602	93	27458	3.705	ng/ul#	83
29) 2,4-Dichlorophenol	10.831	162	23811	4.443	ng/ul#	72
30) Naphthalene	11.260	128	81042	3.775	ng/ul#	93
32) 4-Chloroaniline	11.378	127	34509	3.984	ng/ul	92
33) Hexachlorobutadiene	11.495	225	14933	4.645	ng/ul	94
34) Caprolactam	12.141	113	7485m	3.818	ng/ul	
35) 4-Chloro-3-methylphenol	12.435	107	25320	3.960	ng/ul	88
36) 2-Methylnaphthalene	12.841	142	57572	3.898	ng/ul	92
37) 1-Methylnaphthalene	13.064	142	58846	4.001	ng/ul	99

Data Path : Z:\svoasrv\HPCHEM1\BNA_G\Data\BG103023\
 Data File : BG059548.D
 Acq On : 30 Oct 2023 16:20
 Operator : MA/JU
 Sample : 04696-03
 Misc : SFAM-MDL-SOIL-01
 ALS Vial : 5 Sample Multiplier: 1

Instrument :
 BNA_G
ClientSampleId :
 MDL-SOIL-QT4-2023-07

Manual Integrations
APPROVED

Reviewed By :Yogesh Patel 11/01/2023
 Supervised By :mohammad ahmed 11/01/2023

Quant Time: Oct 30 17:24:38 2023
 Quant Method : Z:\svoasrv\HPCHEM1\BNA_G\Methods\SFAM-EPA-BG102723.MA.M
 Quant Title : SVOA CALIBRATION
 QLast Update : Sat Oct 28 03:56:42 2023
 Response via : Initial Calibration

Compound	R.T.	QIon	Response	Conc	Units	Dev(Min)
39) 1,2,4,5-Tetrachloroben...	13.181	216	22478	3.463	ng/ul#	90
40) Hexachlorocyclopentadiene	13.140	237	16607	4.388	ng/ul	97
41) 2,4,6-Trichlorophenol	13.416	196	16853	3.749	ng/ul#	81
42) 2,4,5-Trichlorophenol	13.487	196	19640m	4.036	ng/ul	
43) 1,1'-Biphenyl	13.828	154	73522	3.611	ng/ul	99
44) 2-Chloronaphthalene	13.881	162	55575	3.512	ng/ul	94
45) 2-Nitroaniline	14.092	65	12692	4.310	ng/ul	96
47) Dimethylphthalate	14.433	163	73206	3.634	ng/ul#	95
48) 2,6-Dinitrotoluene	14.568	165	10712	3.525	ng/ul#	64
50) Acenaphthylene	14.727	152	97468	3.535	ng/ul	98
51) 3-Nitroaniline	14.909	138	13690	3.614	ng/ul#	91
52) Acenaphthene	15.056	153	64160	3.570	ng/ul	95
53) 2,4-Dinitrophenol	15.103	184	7674	4.444	ng/ul#	79
55) 4-Nitrophenol	15.173	109	16223	4.210	ng/ul#	72
56) Dibenzofuran	15.391	168	86006	3.691	ng/ul	93
57) 2,4-Dinitrotoluene	15.344	165	16710	3.909	ng/ul	99
58) 2,3,4,6-Tetrachlorophenol	15.590	232	15938	4.173	ng/ul#	86
59) Diethylphthalate	15.778	149	75968	3.457	ng/ul	98
61) Fluorene	16.037	166	77339	3.845	ng/ul	87
62) 4-Chlorophenyl-phenyle...	16.019	204	33233	3.866	ng/ul	89
63) 4-Nitroaniline	16.060	138	16575	4.123	ng/ul#	74
66) 4,6-Dinitro-2-methylph...	16.090	198	10010	3.947	ng/ul#	65
67) N-Nitrosodiphenylamine	16.237	169	63304	3.646	ng/ul	96
68) 4-Bromophenyl-phenylether	16.918	248	19007	3.738	ng/ul#	79
69) Hexachlorobenzene	17.006	284	21107	3.592	ng/ul#	91
70) Atrazine	17.171	200	22355	4.156	ng/ul#	86
71) Pentachlorophenol	17.365	266	14468	4.310	ng/ul#	87
72) Phenanthrene	17.788	178	122643	3.713	ng/ul	96
74) Anthracene	17.882	178	121037	3.629	ng/ul	95
75) 1,2,3,4-Tetrachloroben...	13.787	216	22728	3.359	ng/uL	85
76) Pentachlorobenzene	15.285	250	23954	3.731	ng/uL	96
77) Carbazole	18.152	167	110595	3.860	ng/ul	97
78) Di-n-butylphthalate	18.663	149	142743	3.626	ng/ul	96
80) Fluoranthene	19.780	202	148696	3.741	ng/ul	100
82) Pyrene	20.144	202	151157	3.662	ng/ul#	96
83) Butylbenzylphthalate	21.013	149	69712	3.739	ng/ul	99
84) 3,3'-Dichlorobenzidine	21.971	252	52965	4.342	ng/ul#	94
85) Benzo(a)anthracene	22.059	228	144951	3.755	ng/ul	97
86) Bis(2-ethylhexyl)phtha...	21.907	149	100263	3.604	ng/ul	96
87) Chrysene	22.136	228	129879	3.617	ng/ul	95
89) Di-n-octyl phthalate	23.264	149	175948	4.051	ng/ul	100
90) Benzo(b)fluoranthene	24.527	252	133195m	3.704	ng/ul	
91) Benzo(k)fluoranthene	24.603	252	133721	3.723	ng/ul	96
93) Benzo(a)pyrene	25.520	252	119799	3.525	ng/ul	98
94) Indeno(1,2,3-cd)pyrene	29.891	276	161276m	3.744	ng/ul	
95) Dibenzo(a,h)anthracene	29.974	278	131996m	3.710	ng/ul	
96) Benzo(g,h,i)perylene	31.201	276	125920m	3.571	ng/ul	

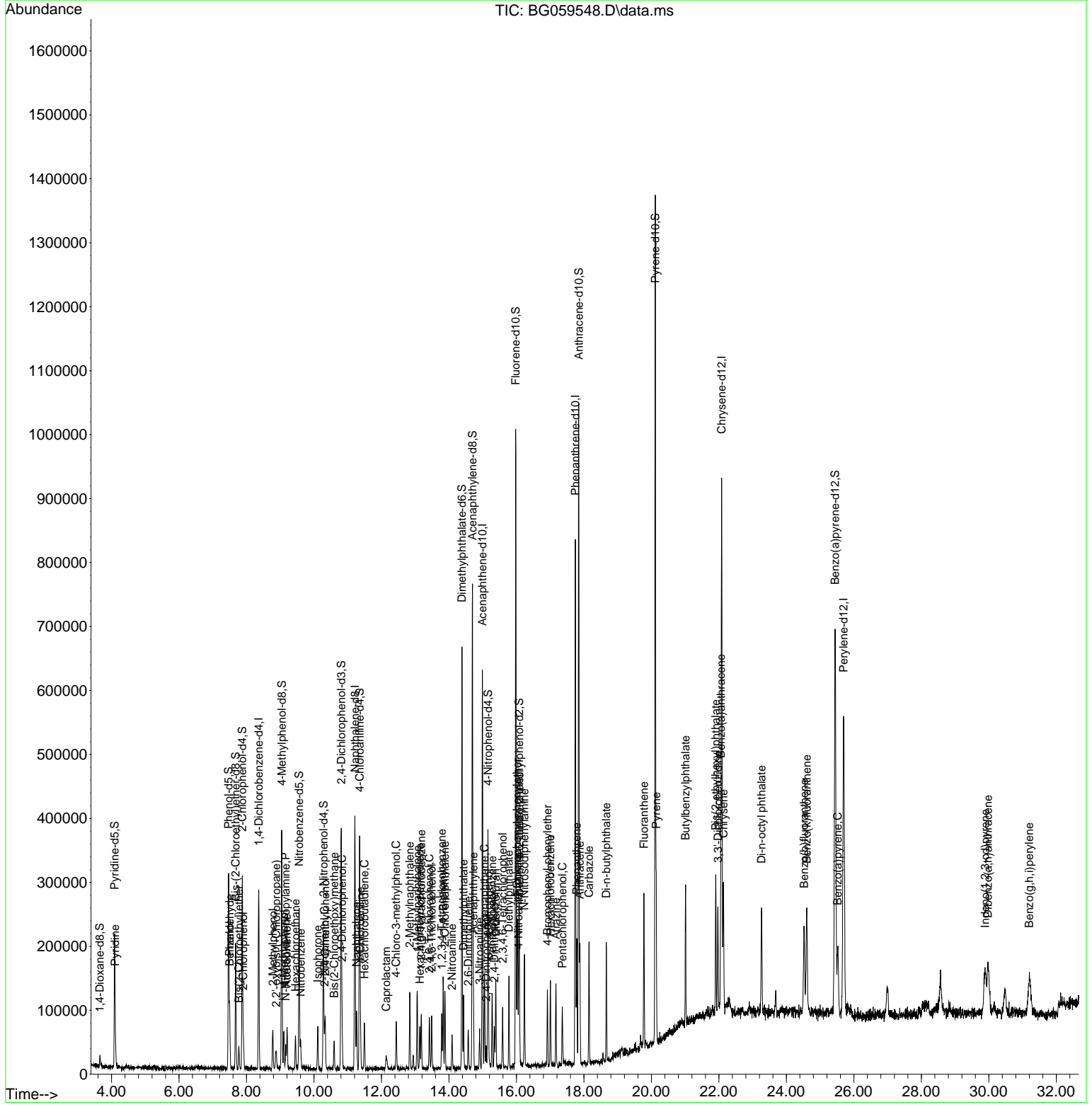
(#) = qualifier out of range (m) = manual integration (+) = signals summed

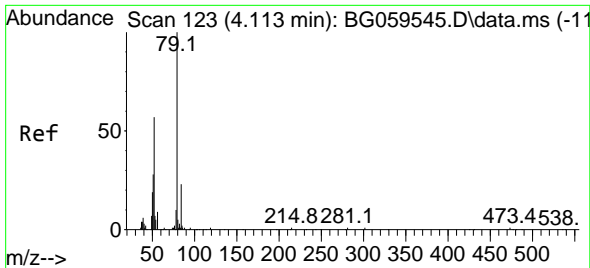
Data Path : Z:\svoasrv\HPCHEM1\BNA_G\Data\BG103023\
 Data File : BG059548.D
 Acq On : 30 Oct 2023 16:20
 Operator : MA/JU
 Sample : 04696-03
 Misc : SFAM-MDL-SOIL-01
 ALS Vial : 5 Sample Multiplier: 1

Instrument :
 BNA_G
 ClientSampleId :
 MDL-SOIL-QT4-2023-07

Quant Time: Oct 30 17:24:38 2023
 Quant Method : Z:\svoasrv\HPCHEM1\BNA_G\Methods\SFAM-EPA-BG102723.MA.M
 Quant Title : SVOA CALIBRATION
 QLast Update : Sat Oct 28 03:56:42 2023
 Response via : Initial Calibration

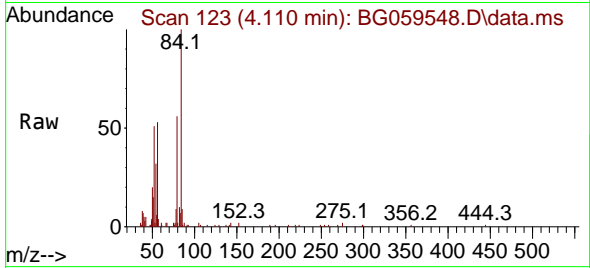
Manual Integrations
APPROVED
 Reviewed By :Yogesh Patel 11/01/2023
 Supervised By :mohammad ahmed 11/01/2023





#5
 Pyridine
 Concen: 3.495 ng/uI
 RT: 4.110 min Scan# 11
 Delta R.T. -0.004 min
 Lab File: BG059548.D
 Acq: 30 Oct 2023 16:20

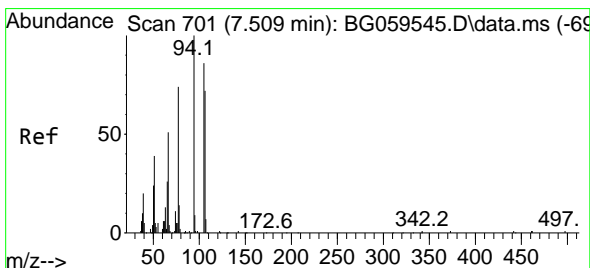
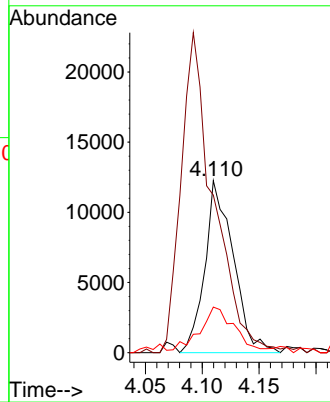
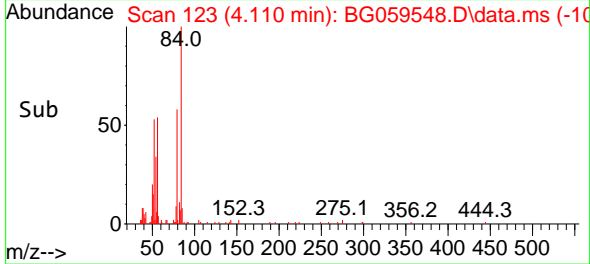
Instrument :
 BNA_G
 ClientSampleId :
 MDL-SOIL-QT4-2023-07



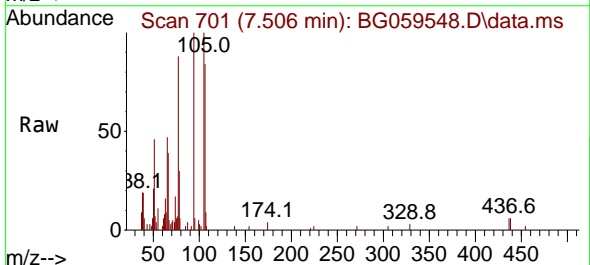
Tgt Ion: 79 Resp: 21249
 Ion Ratio Lower Upper
 79 100
 52 91.6 53.3 79.9
 51 26.5 22.4 33.6

Manual Integrations
 APPROVED

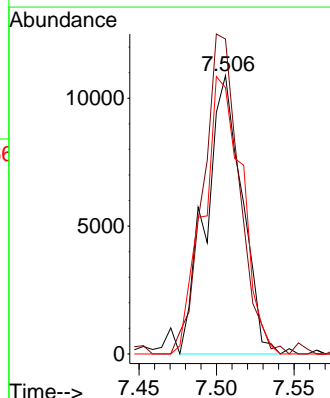
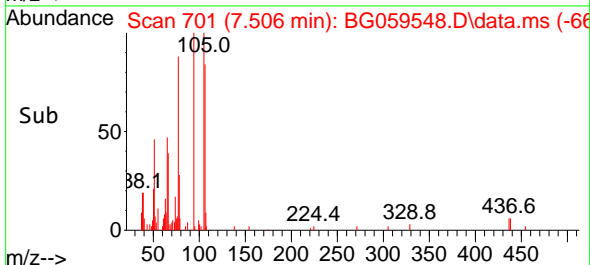
Reviewed By :Yogesh Patel 11/01/2023
 Supervised By :mohammad ahmed 11/01/2023

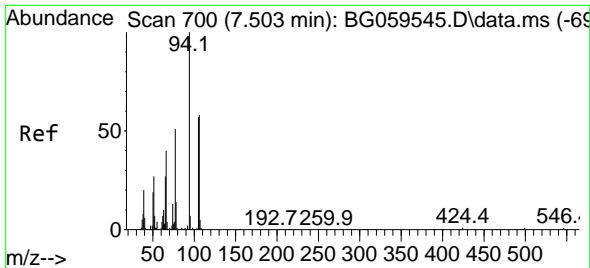


#6
 Benzaldehyde
 Concen: 4.637 ng/uI
 RT: 7.506 min Scan# 701
 Delta R.T. 0.002 min
 Lab File: BG059548.D
 Acq: 30 Oct 2023 16:20



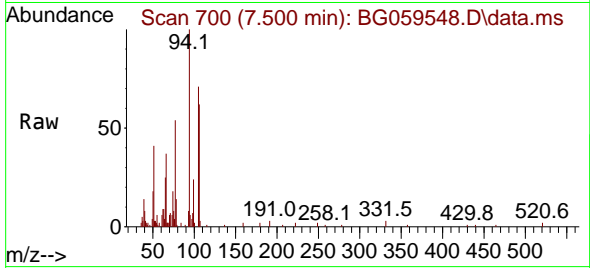
Tgt Ion: 77 Resp: 17714
 Ion Ratio Lower Upper
 77 100
 105 113.1 83.6 125.4
 106 95.6 78.6 118.0





#8
 Phenol
 Concen: 3.601 ng/uI
 RT: 7.500 min Scan# 700
 Delta R.T. 0.002 min
 Lab File: BG059548.D
 Acq: 30 Oct 2023 16:20

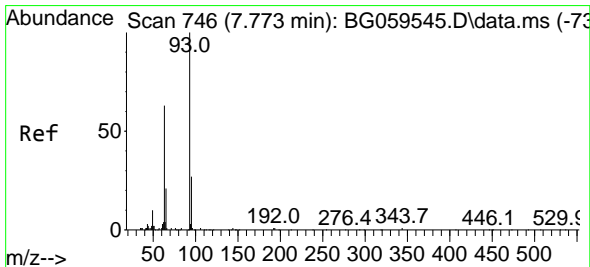
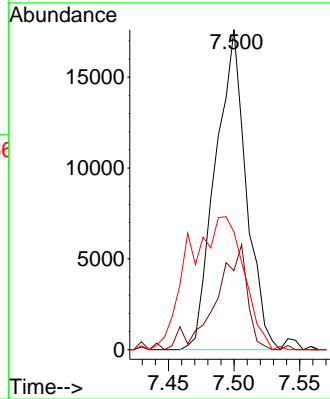
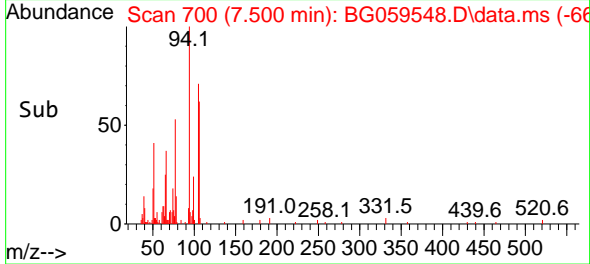
Instrument :
 BNA_G
 ClientSampleId :
 MDL-SOIL-QT4-2023-07



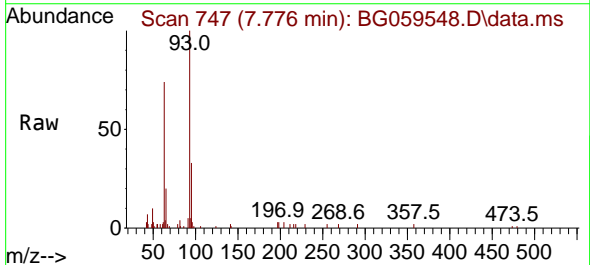
Tgt Ion: 94 Resp: 2879
 Ion Ratio Lower Upper
 94 100
 65 24.7 22.5 33.7
 66 36.8 31.1 46.7

Manual Integrations
APPROVED

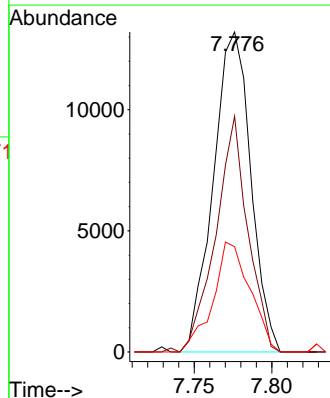
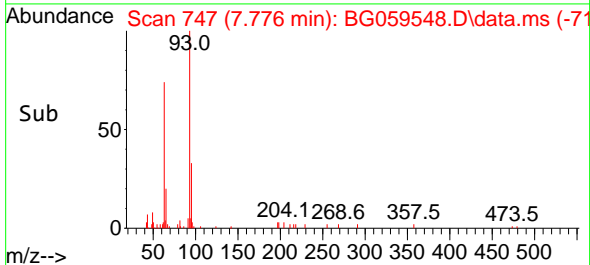
Reviewed By :Yogesh Patel 11/01/2023
 Supervised By :mohammad ahmed 11/01/2023

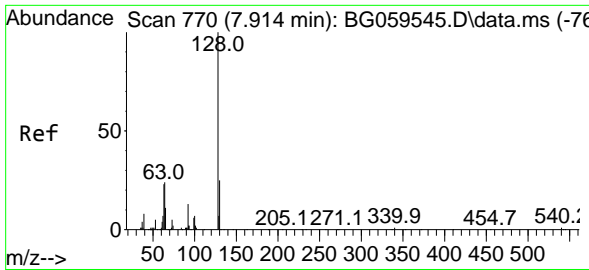


#10
 Bis(2-Chloroethyl)ether
 Concen: 3.790 ng/uI
 RT: 7.776 min Scan# 747
 Delta R.T. -0.004 min
 Lab File: BG059548.D
 Acq: 30 Oct 2023 16:20



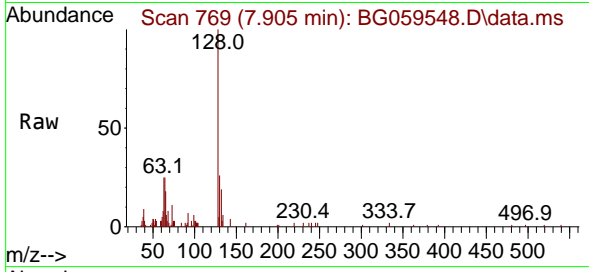
Tgt Ion: 93 Resp: 22222
 Ion Ratio Lower Upper
 93 100
 63 73.6 52.5 78.7
 95 32.9 26.5 39.7





#12
 2-Chlorophenol
 Concen: 3.897 ng/uI
 RT: 7.905 min Scan# 769
 Delta R.T. -0.009 min
 Lab File: BG059548.D
 Acq: 30 Oct 2023 16:20

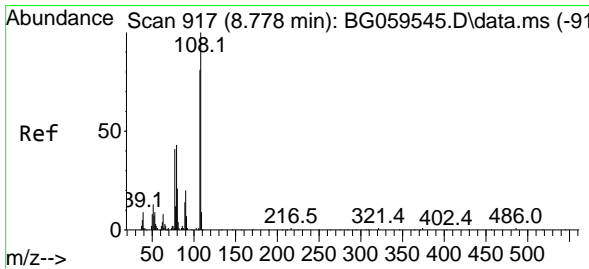
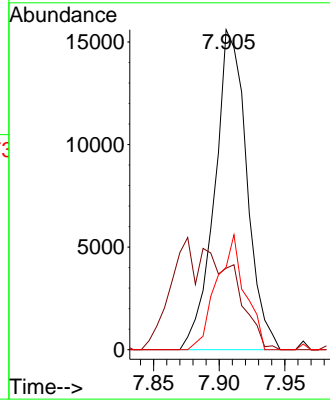
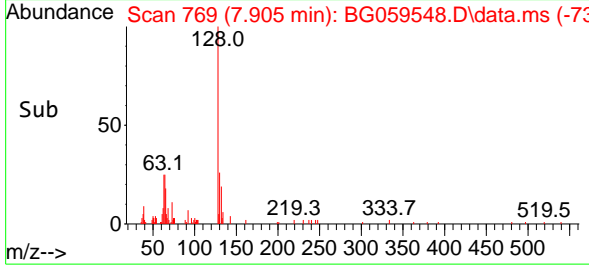
Instrument : BNA_G
 ClientSampleId : MDL-SOIL-QT4-2023-07



Tgt Ion:128 Resp: 26584
 Ion Ratio Lower Upper
 128 100
 64 25.5 30.2 45.2
 130 25.7 27.9 41.9

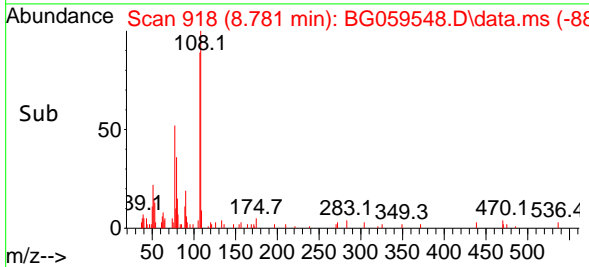
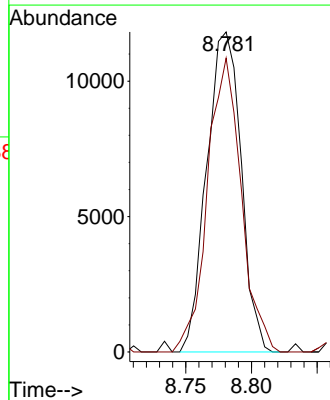
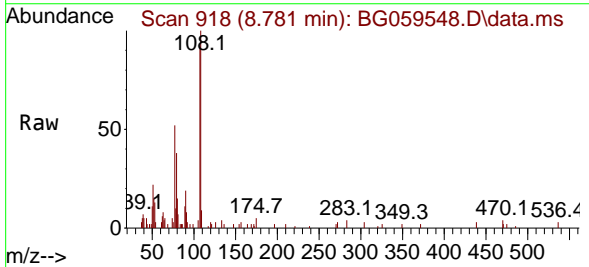
Manual Integrations
APPROVED

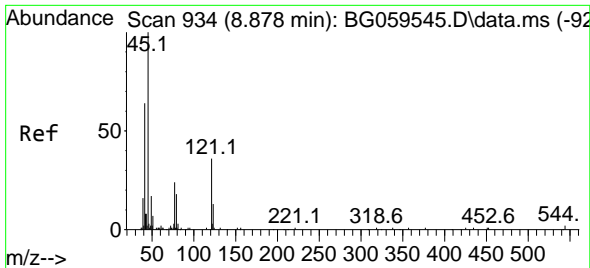
Reviewed By :Yogesh Patel 11/01/2023
 Supervised By :mohammad ahmed 11/01/2023



#13
 2-Methylphenol
 Concen: 3.231 ng/uI
 RT: 8.781 min Scan# 918
 Delta R.T. 0.002 min
 Lab File: BG059548.D
 Acq: 30 Oct 2023 16:20

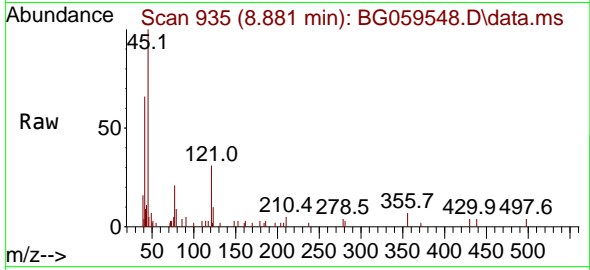
Tgt Ion:108 Resp: 21533
 Ion Ratio Lower Upper
 108 100
 107 91.8 68.6 102.8





#14
 2,2'-oxybis(1-Chloropropane)
 Concen: 3.535 ng/ul m
 RT: 8.881 min Scan# 911
 Delta R.T. 0.002 min
 Lab File: BG059548.D
 Acq: 30 Oct 2023 16:20

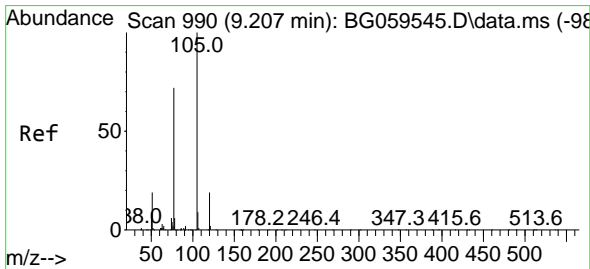
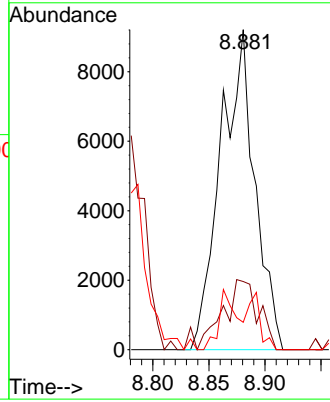
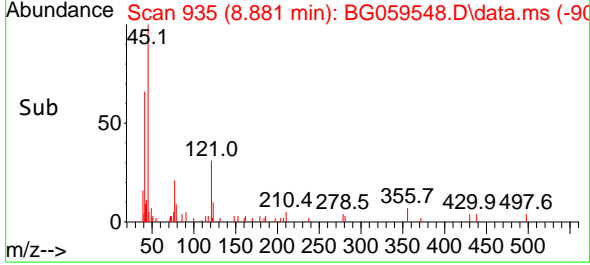
Instrument :
 BNA_G
 ClientSampleId :
 MDL-SOIL-QT4-2023-07



Tgt Ion: 45 Resp: 19504
 Ion Ratio Lower Upper
 45 100
 77 21.3 15.0 22.6
 79 8.5 10.0 15.0

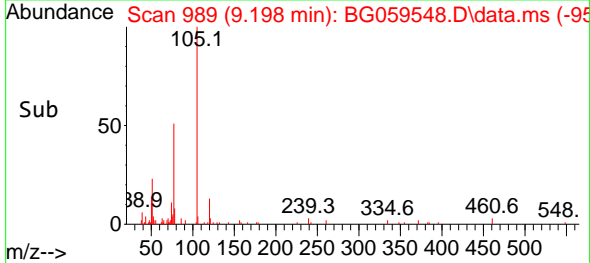
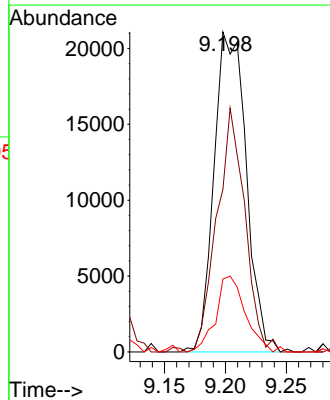
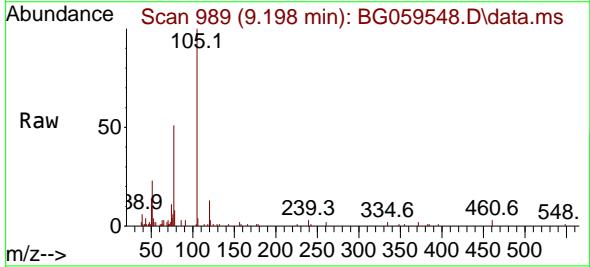
Manual Integrations
 APPROVED

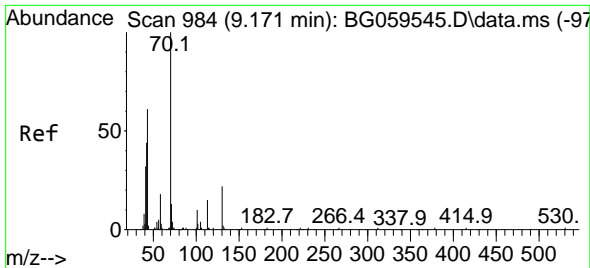
Reviewed By :Yogesh Patel 11/01/2023
 Supervised By :mohammad ahmed 11/01/2023



#16
 Acetophenone
 Concen: 3.648 ng/ul
 RT: 9.198 min Scan# 989
 Delta R.T. -0.009 min
 Lab File: BG059548.D
 Acq: 30 Oct 2023 16:20

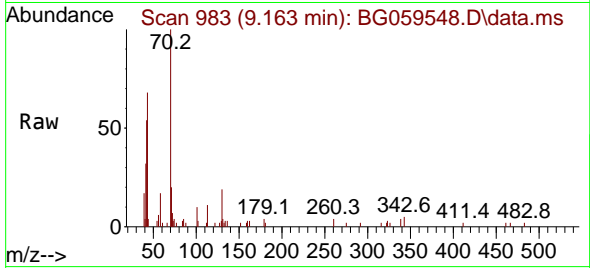
Tgt Ion:105 Resp: 38695
 Ion Ratio Lower Upper
 105 100
 77 50.8 59.6 89.4#
 51 22.8 16.2 24.4





#17
 N-Nitroso-di-n-propylamine
 Concen: 3.130 ng/ul
 RT: 9.163 min Scan# 913
 Delta R.T. -0.009 min
 Lab File: BG059548.D
 Acq: 30 Oct 2023 16:20

Instrument : BNA_G
 ClientSampleId : MDL-SOIL-QT4-2023-07

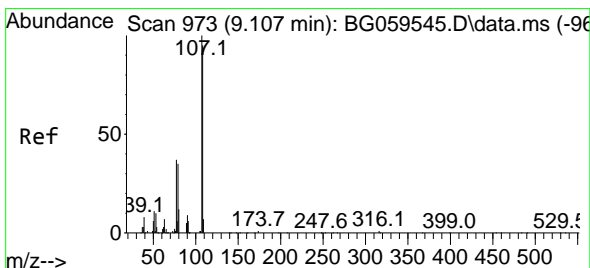
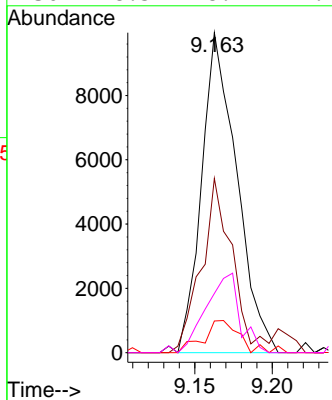
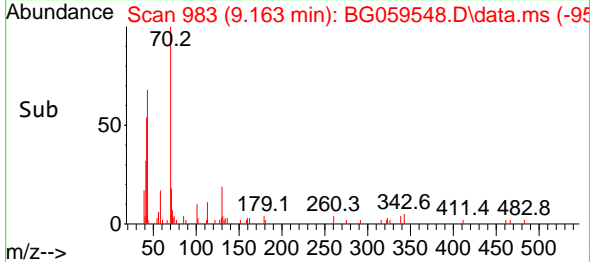


Tgt Ion: 70 Resp: 15640

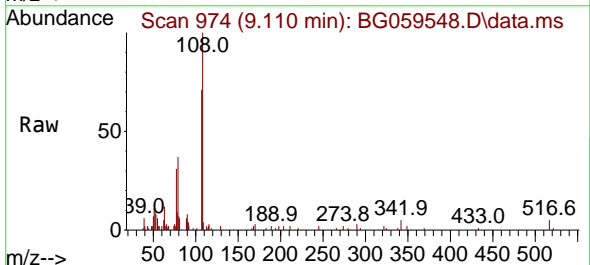
Ion	Ratio	Lower	Upper
70	100		
42	54.5	33.8	50.8
101	9.9	5.4	8.0
130	18.5	18.2	27.4

Manual Integrations
APPROVED

Reviewed By :Yogesh Patel 11/01/2023
 Supervised By :mohammad ahmed 11/01/2023

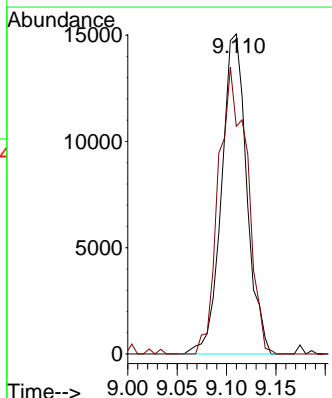
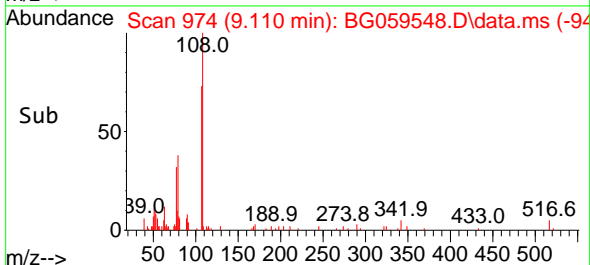


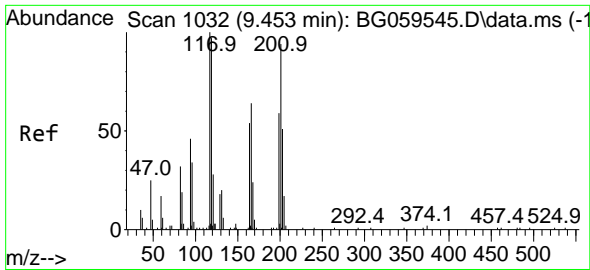
#18
 4-Methylphenol
 Concen: 3.753 ng/ul m
 RT: 9.110 min Scan# 974
 Delta R.T. 0.002 min
 Lab File: BG059548.D
 Acq: 30 Oct 2023 16:20



Tgt Ion:108 Resp: 26617

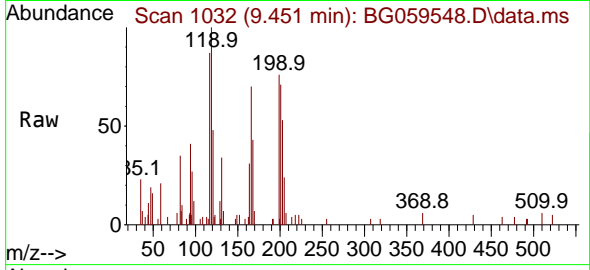
Ion	Ratio	Lower	Upper
108	100		
107	71.2	88.9	133.3





#19
 Hexachloroethane
 Concen: 3.139 ng/ul
 RT: 9.451 min Scan# 1032
 Delta R.T. -0.004 min
 Lab File: BG059548.D
 Acq: 30 Oct 2023 16:20

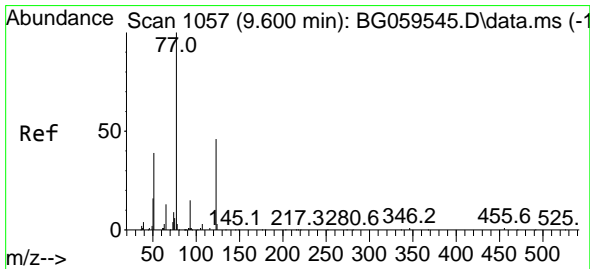
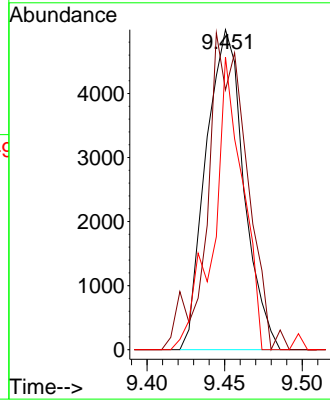
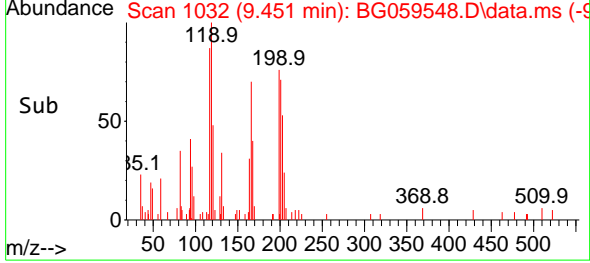
Instrument : BNA_G
 Client Sample Id : MDL-SOIL-QT4-2023-07



Tgt Ion: 117 Resp: 8504
 Ion Ratio Lower Upper
 117 100
 201 81.2 75.8 113.6
 199 91.5 42.3 63.5

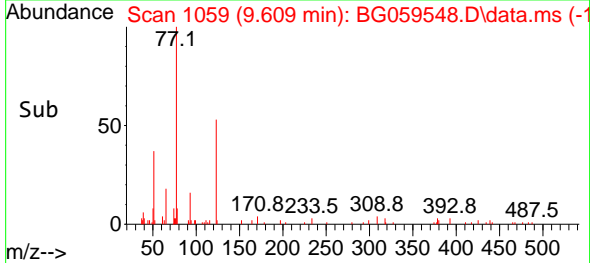
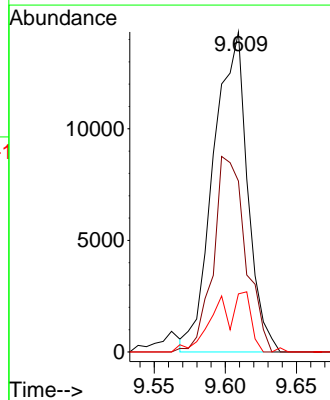
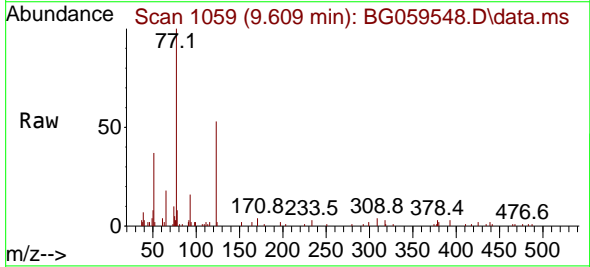
Manual Integrations
 APPROVED

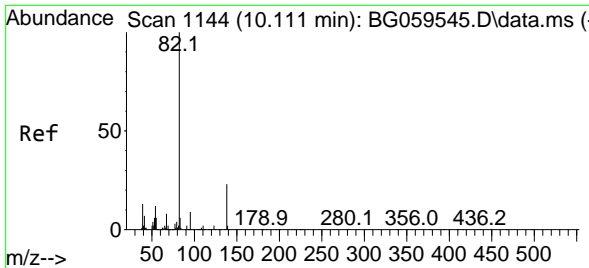
Reviewed By :Yogesh Patel 11/01/2023
 Supervised By :mohammad ahmed 11/01/2023



#22
 Nitrobenzene
 Concen: 4.514 ng/ul
 RT: 9.609 min Scan# 1059
 Delta R.T. 0.002 min
 Lab File: BG059548.D
 Acq: 30 Oct 2023 16:20

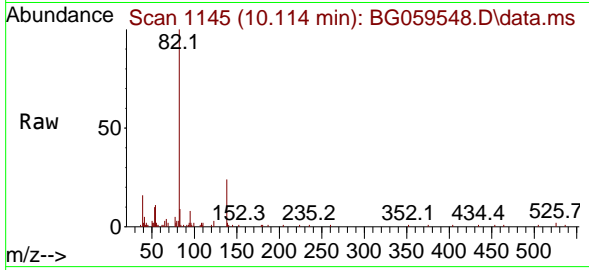
Tgt Ion: 77 Resp: 23858
 Ion Ratio Lower Upper
 77 100
 123 53.4 42.6 63.8
 65 18.1 11.0 16.4





#23
 Isophorone
 Concen: 3.750 ng/uI
 RT: 10.114 min Scan# 1144
 Delta R.T. 0.002 min
 Lab File: BG059548.D
 Acq: 30 Oct 2023 16:20

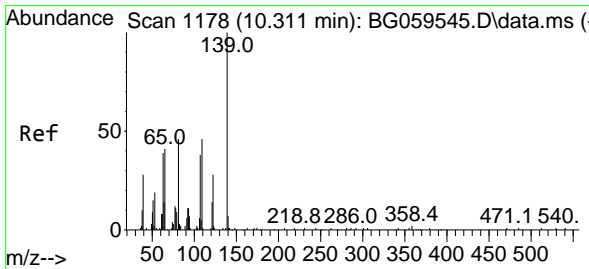
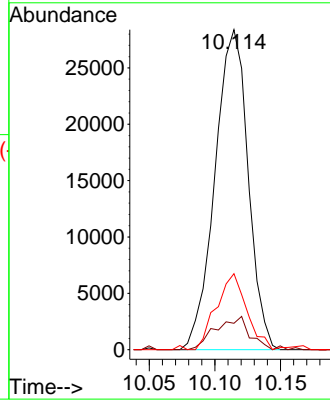
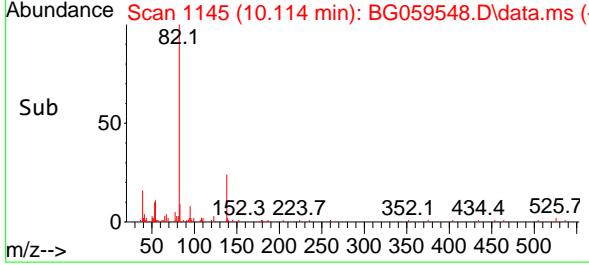
Instrument : BNA_G
 ClientSampleId : MDL-SOIL-QT4-2023-07



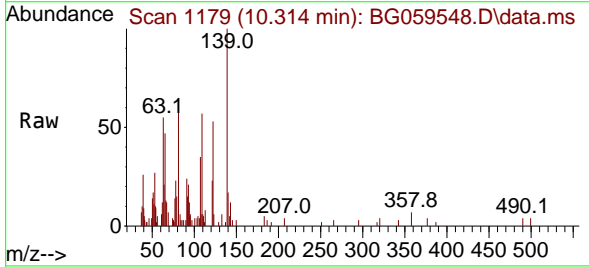
Tgt Ion: 82 Resp: 49910
 Ion Ratio Lower Upper
 82 100
 95 8.2 5.6 8.4
 138 23.7 12.3 18.5

Manual Integrations
 APPROVED

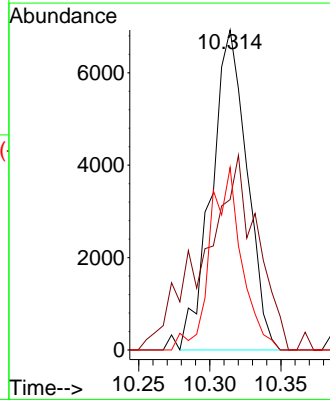
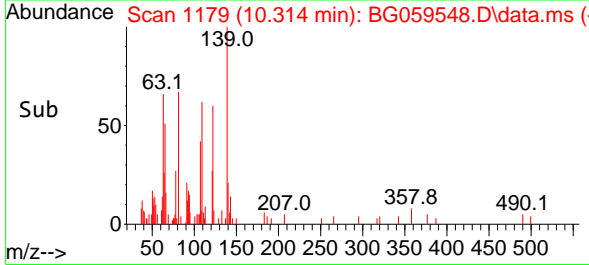
Reviewed By :Yogesh Patel 11/01/2023
 Supervised By :mohammad ahmed 11/01/2023

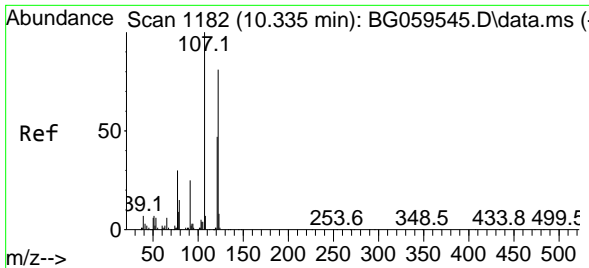


#25
 2-Nitrophenol
 Concen: 4.468 ng/uI
 RT: 10.314 min Scan# 1179
 Delta R.T. -0.004 min
 Lab File: BG059548.D
 Acq: 30 Oct 2023 16:20



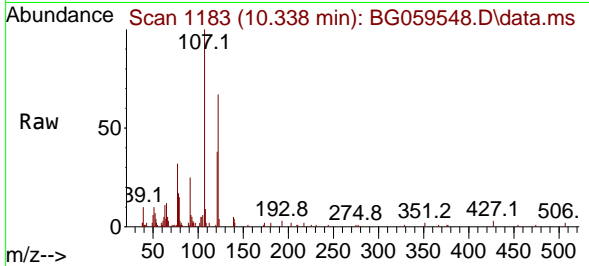
Tgt Ion:139 Resp: 12080
 Ion Ratio Lower Upper
 139 100
 65 47.0 39.7 59.5
 109 57.0 21.0 31.6





#26
 2,4-Dimethylphenol
 Concen: 3.876 ng/uI
 RT: 10.338 min Scan# 1182
 Delta R.T. 0.002 min
 Lab File: BG059548.D
 Acq: 30 Oct 2023 16:20

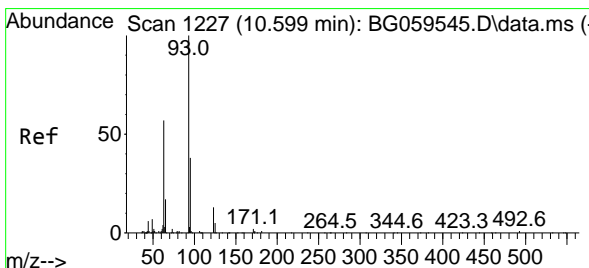
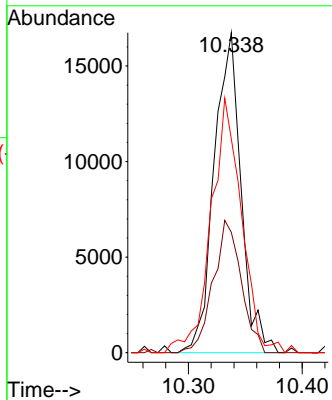
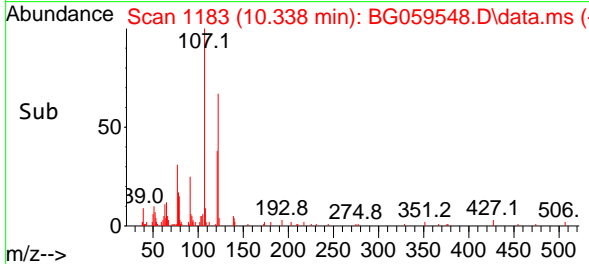
Instrument : BNA_G
 ClientSampleId : MDL-SOIL-QT4-2023-07



Tgt Ion:107 Resp: 2756
 Ion Ratio Lower Upper
 107 100
 121 37.6 42.7 64.1#
 122 66.7 72.6 108.8#

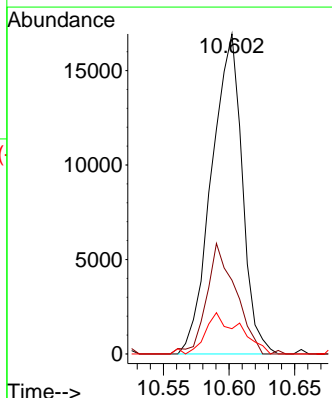
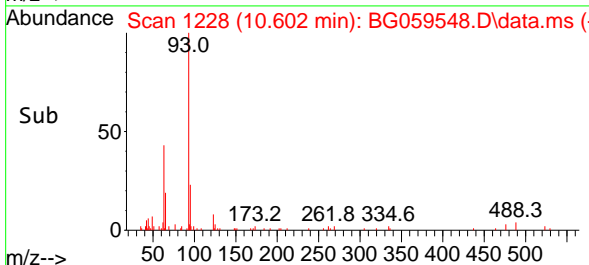
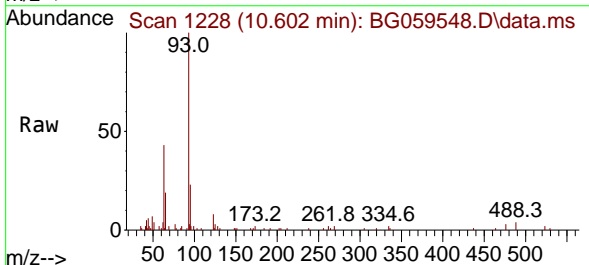
Manual Integrations
 APPROVED

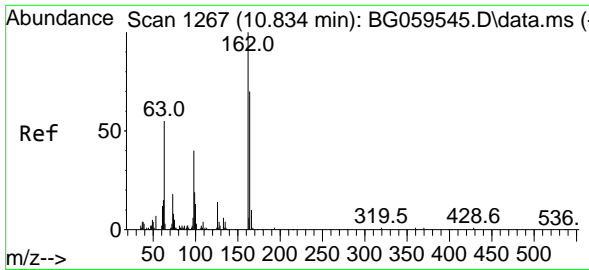
Reviewed By :Yogesh Patel 11/01/2023
 Supervised By :mohammad ahmed 11/01/2023



#27
 Bis(2-Chloroethoxy)methane
 Concen: 3.705 ng/uI
 RT: 10.602 min Scan# 1228
 Delta R.T. 0.002 min
 Lab File: BG059548.D
 Acq: 30 Oct 2023 16:20

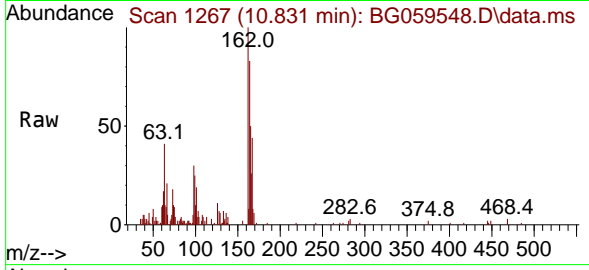
Tgt Ion: 93 Resp: 27458
 Ion Ratio Lower Upper
 93 100
 95 23.1 27.1 40.7#
 123 7.9 10.3 15.5#





#29
 2,4-Dichlorophenol
 Concen: 4.443 ng/uI
 RT: 10.831 min Scan# 11
 Delta R.T. 0.002 min
 Lab File: BG059548.D
 Acq: 30 Oct 2023 16:20

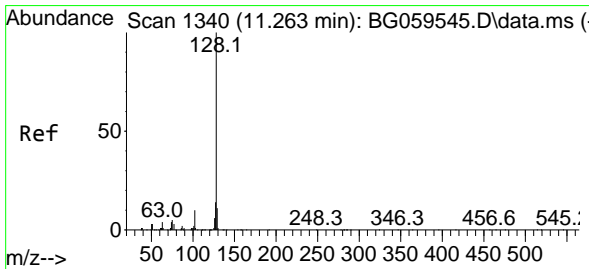
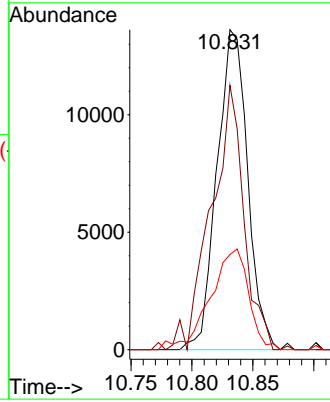
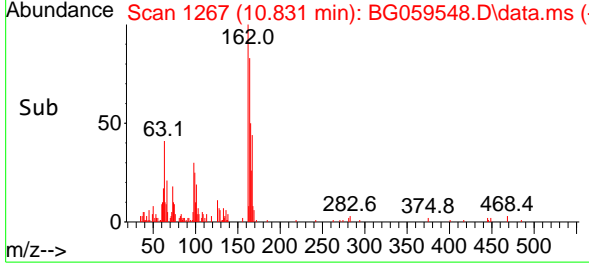
Instrument :
 BNA_G
 ClientSampleId :
 MDL-SOIL-QT4-2023-07



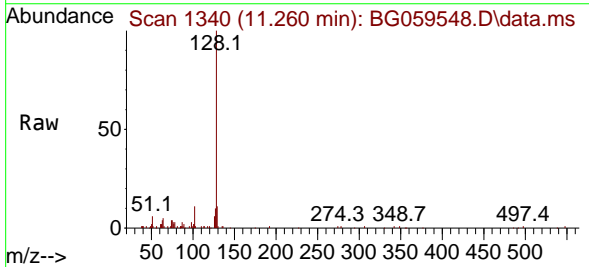
Tgt Ion:162 Resp: 2381
 Ion Ratio Lower Upper
 162 100
 164 82.6 45.3 67.9
 98 29.7 32.2 48.4

Manual Integrations
 APPROVED

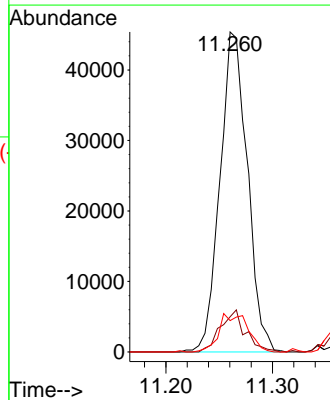
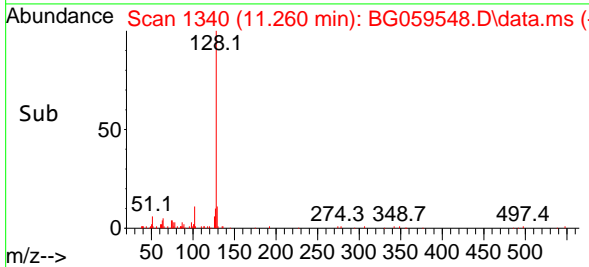
Reviewed By :Yogesh Patel 11/01/2023
 Supervised By :mohammad ahmed 11/01/2023

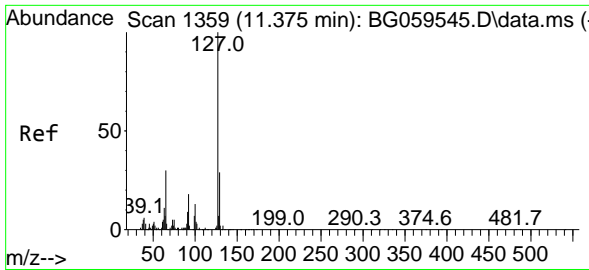


#30
 Naphthalene
 Concen: 3.775 ng/uI
 RT: 11.260 min Scan# 1340
 Delta R.T. -0.004 min
 Lab File: BG059548.D
 Acq: 30 Oct 2023 16:20



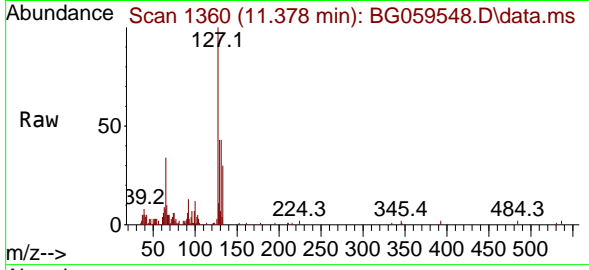
Tgt Ion:128 Resp: 81042
 Ion Ratio Lower Upper
 128 100
 129 11.0 7.4 11.0
 127 9.8 10.5 15.7#





#32
 4-Chloroaniline
 Concen: 3.984 ng/ul
 RT: 11.378 min Scan# 1359
 Delta R.T. 0.002 min
 Lab File: BG059548.D
 Acq: 30 Oct 2023 16:20

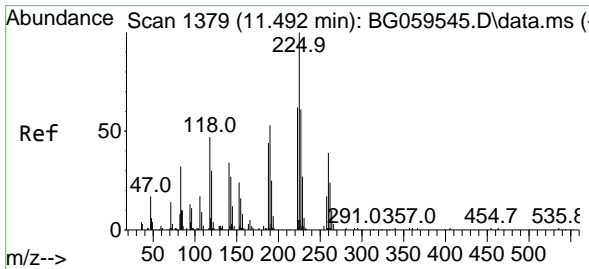
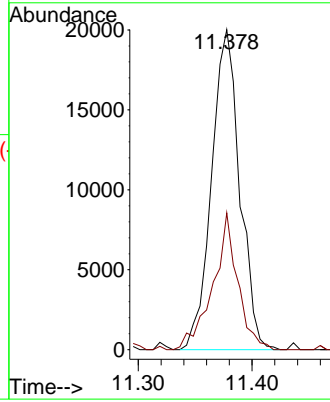
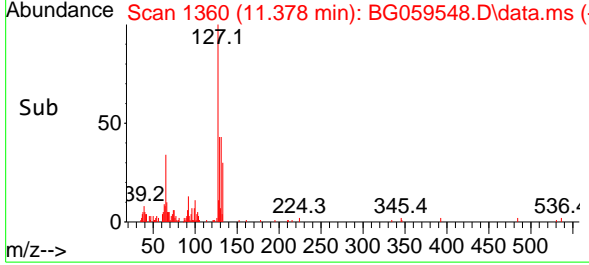
Instrument : BNA_G
 ClientSampleId : MDL-SOIL-QT4-2023-07



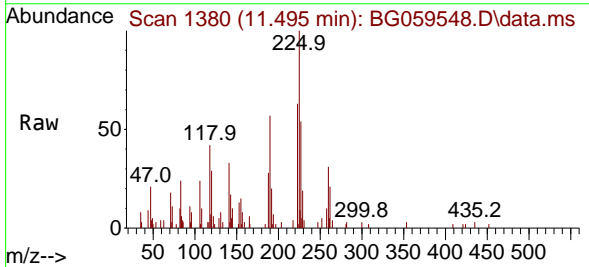
Tgt Ion:127 Resp: 34509
 Ion Ratio Lower Upper
 127 100
 129 42.8 30.4 45.6

Manual Integrations
APPROVED

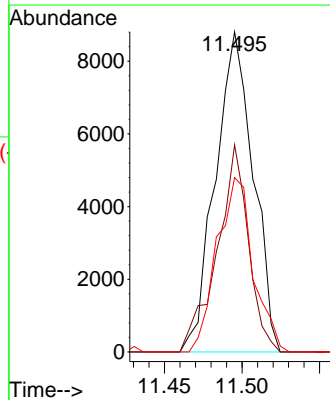
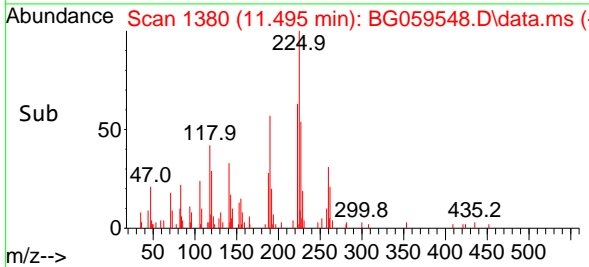
Reviewed By :Yogesh Patel 11/01/2023
 Supervised By :mohammad ahmed 11/01/2023

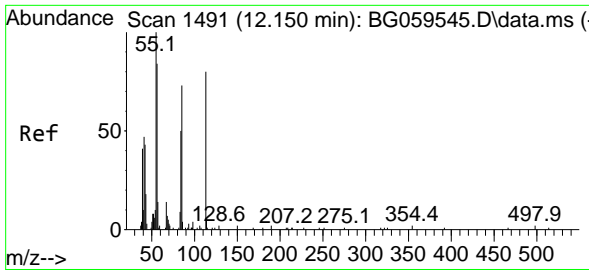


#33
 Hexachlorobutadiene
 Concen: 4.645 ng/ul
 RT: 11.495 min Scan# 1380
 Delta R.T. -0.004 min
 Lab File: BG059548.D
 Acq: 30 Oct 2023 16:20



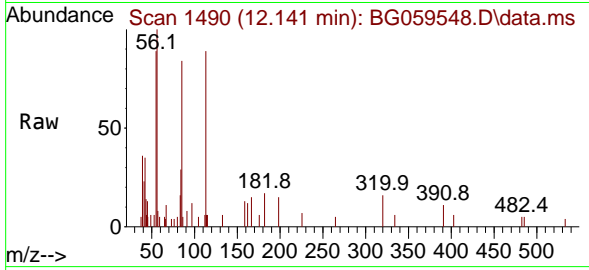
Tgt Ion:225 Resp: 14933
 Ion Ratio Lower Upper
 225 100
 223 64.7 50.8 76.2
 227 54.5 49.8 74.8





#34
 Caprolactam
 Concen: 3.818 ng/ul m
 RT: 12.141 min Scan# 1491
 Delta R.T. -0.015 min
 Lab File: BG059548.D
 Acq: 30 Oct 2023 16:20

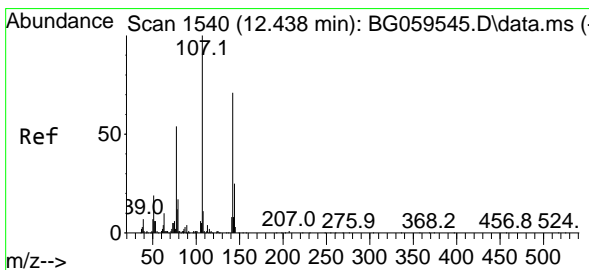
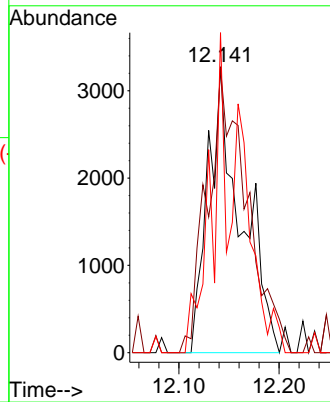
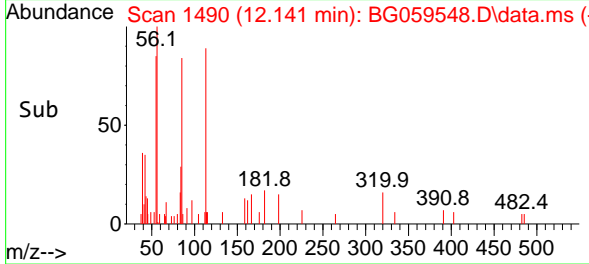
Instrument :
 BNA_G
 ClientSampleId :
 MDL-SOIL-QT4-2023-07



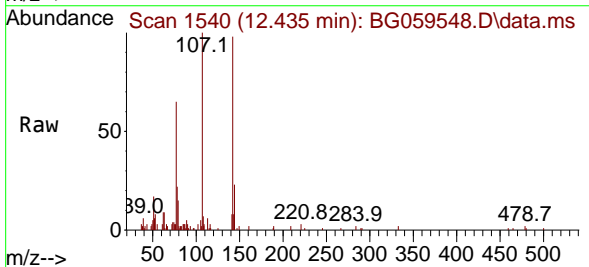
Tgt Ion:113 Resp: 748
 Ion Ratio Lower Upper
 113 100
 55 99.7 86.9 130.3
 56 111.9 64.4 96.6

Manual Integrations
 APPROVED

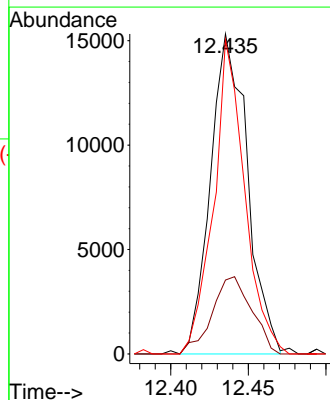
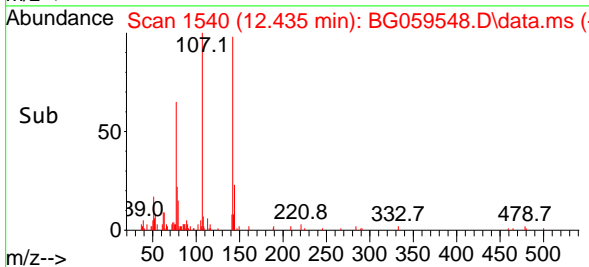
Reviewed By :Yogesh Patel 11/01/2023
 Supervised By :mohammad ahmed 11/01/2023

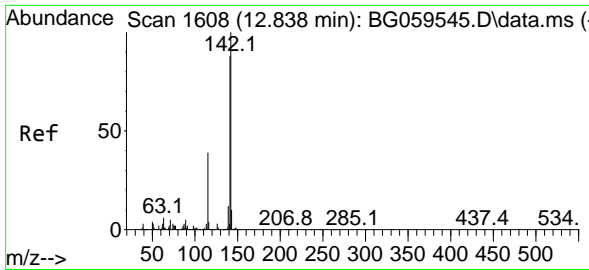


#35
 4-Chloro-3-methylphenol
 Concen: 3.960 ng/ul
 RT: 12.435 min Scan# 1540
 Delta R.T. -0.004 min
 Lab File: BG059548.D
 Acq: 30 Oct 2023 16:20



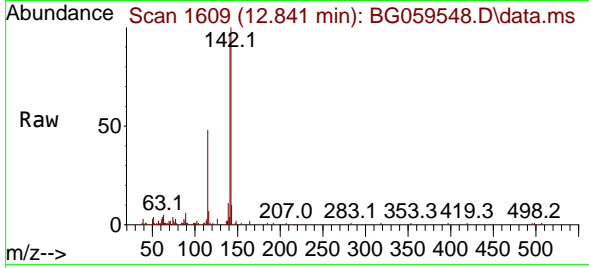
Tgt Ion:107 Resp: 25320
 Ion Ratio Lower Upper
 107 100
 144 23.1 21.0 31.6
 142 98.2 68.2 102.4





#36
 2-Methylnaphthalene
 Concen: 3.898 ng/ul
 RT: 12.841 min Scan# 1609
 Delta R.T. -0.004 min
 Lab File: BG059548.D
 Acq: 30 Oct 2023 16:20

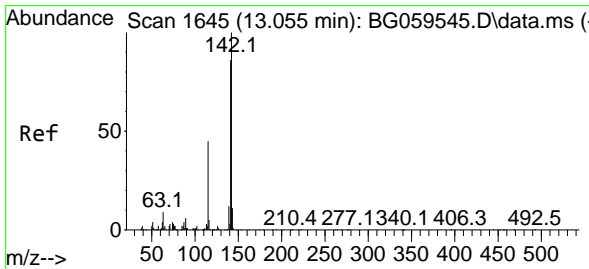
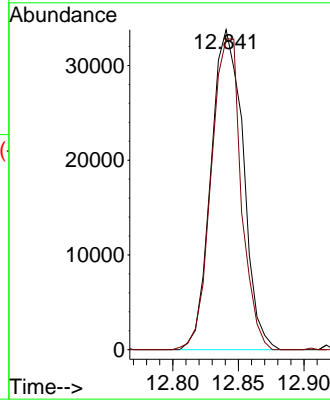
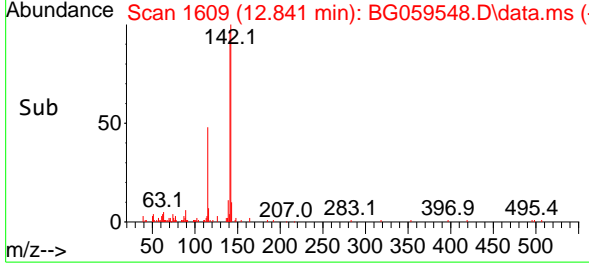
Instrument :
 BNA_G
 ClientSampleId :
 MDL-SOIL-QT4-2023-07



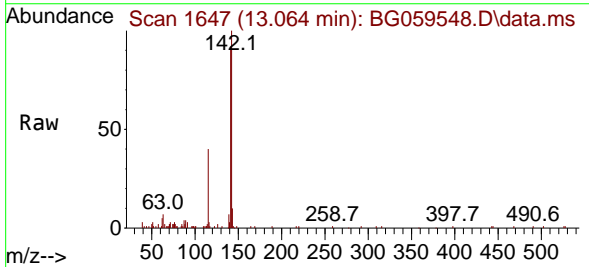
Tgt Ion:142 Resp: 57572
 Ion Ratio Lower Upper
 142 100
 141 97.2 71.7 107.5

Manual Integrations
APPROVED

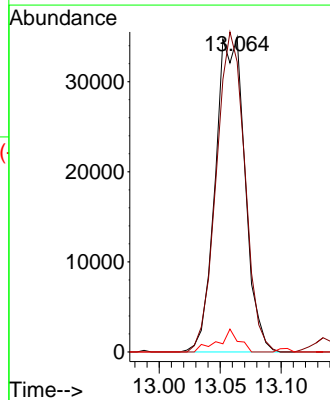
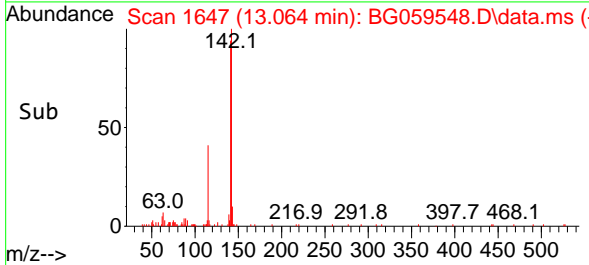
Reviewed By :Yogesh Patel 11/01/2023
 Supervised By :mohammad ahmed 11/01/2023

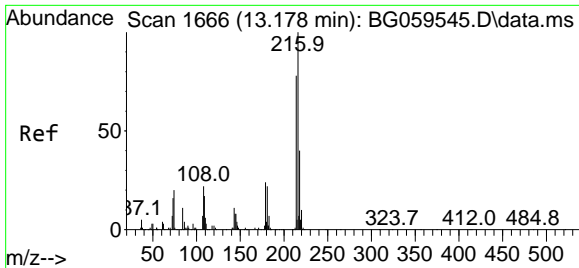


#37
 1-Methylnaphthalene
 Concen: 4.001 ng/ul
 RT: 13.064 min Scan# 1647
 Delta R.T. 0.002 min
 Lab File: BG059548.D
 Acq: 30 Oct 2023 16:20



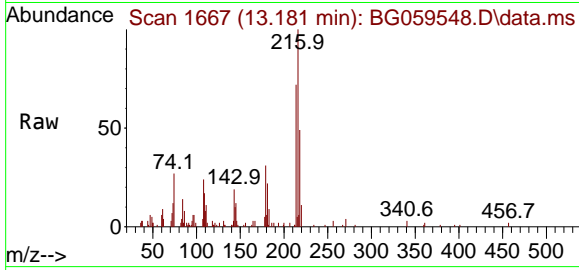
Tgt Ion:142 Resp: 58846
 Ion Ratio Lower Upper
 142 100
 141 92.2 73.1 109.7
 116 3.4 3.3 4.9





#39
 1,2,4,5-Tetrachlorobenzene
 Concen: 3.463 ng/ul
 RT: 13.181 min Scan# 1667
 Delta R.T. 0.002 min
 Lab File: BG059548.D
 Acq: 30 Oct 2023 16:20

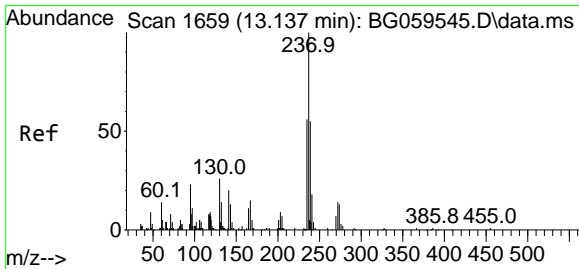
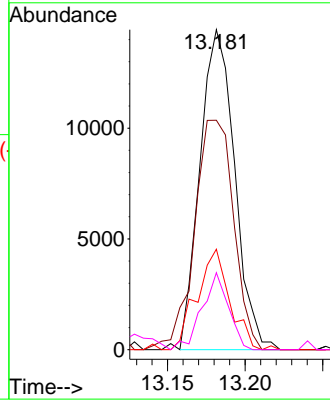
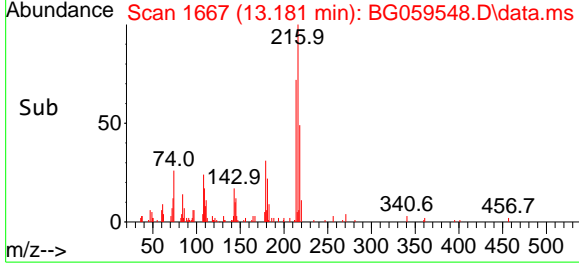
Instrument : BNA_G
 ClientSampleId : MDL-SOIL-QT4-2023-07



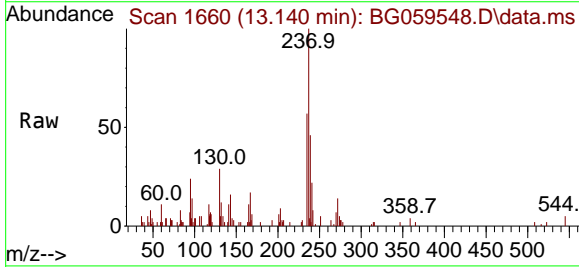
Tgt Ion	Ratio	Lower	Upper
216	100		
214	71.7	63.7	95.5
179	31.4	19.2	28.8
108	24.0	16.5	24.7

Manual Integrations
APPROVED

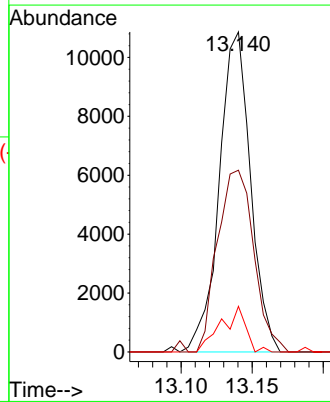
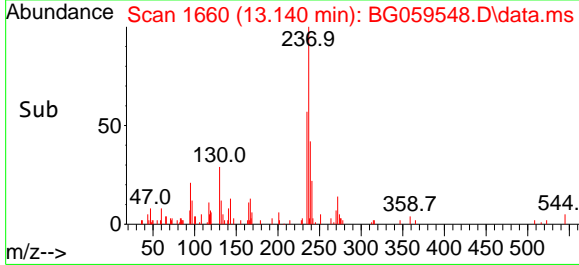
Reviewed By :Yogesh Patel 11/01/2023
 Supervised By :mohammad ahmed 11/01/2023

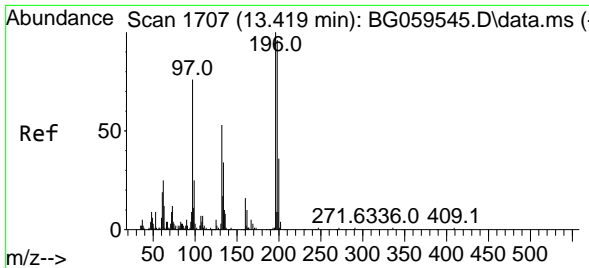


#40
 Hexachlorocyclopentadiene
 Concen: 4.388 ng/ul
 RT: 13.140 min Scan# 1660
 Delta R.T. 0.002 min
 Lab File: BG059548.D
 Acq: 30 Oct 2023 16:20



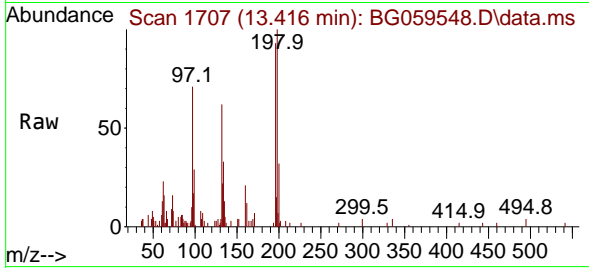
Tgt Ion	Ratio	Lower	Upper
237	100		
235	56.8	46.6	69.8
272	14.2	13.0	19.4





#41
 2,4,6-Trichlorophenol
 Concen: 3.749 ng/ul
 RT: 13.416 min Scan# 1707
 Delta R.T. -0.004 min
 Lab File: BG059548.D
 Acq: 30 Oct 2023 16:20

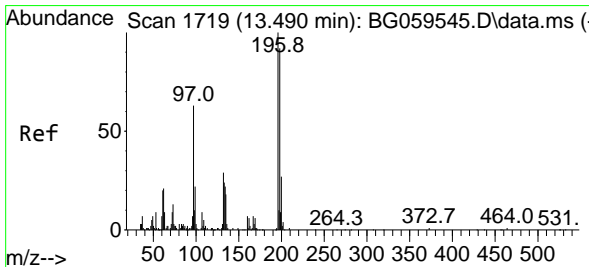
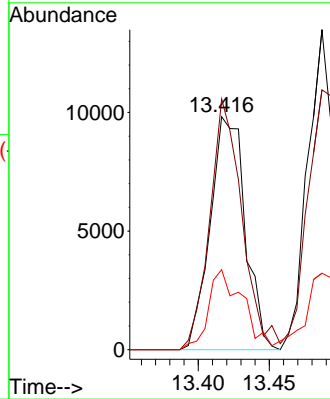
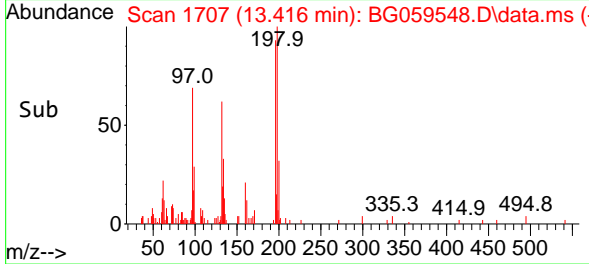
Instrument : BNA_G
 ClientSampleId : MDL-SOIL-QT4-2023-07



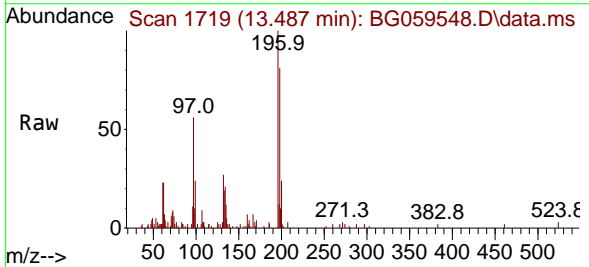
Tgt Ion:196 Resp: 1685
 Ion Ratio Lower Upper
 196 100
 198 107.7 69.6 104.4
 200 34.4 23.8 35.8

Manual Integrations
APPROVED

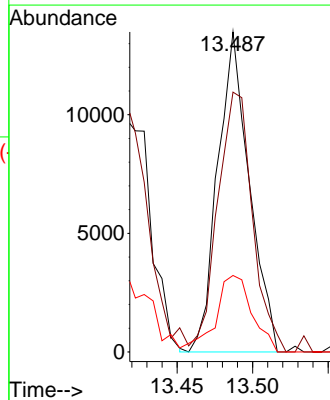
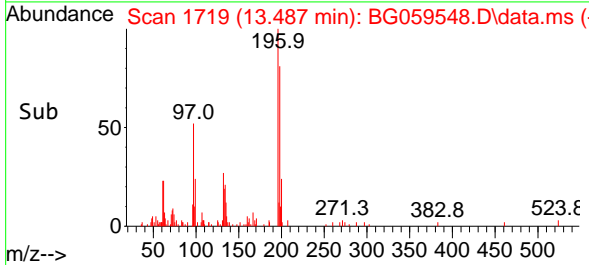
Reviewed By :Yogesh Patel 11/01/2023
 Supervised By :mohammad ahmed 11/01/2023

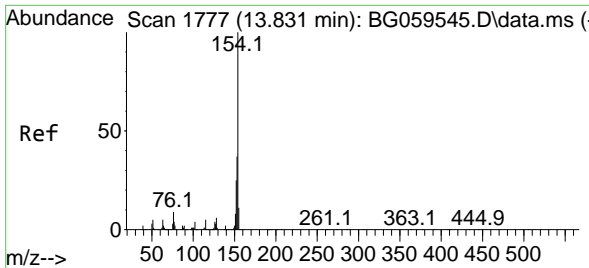


#42
 2,4,5-Trichlorophenol
 Concen: 4.036 ng/ul m
 RT: 13.487 min Scan# 1719
 Delta R.T. 0.002 min
 Lab File: BG059548.D
 Acq: 30 Oct 2023 16:20



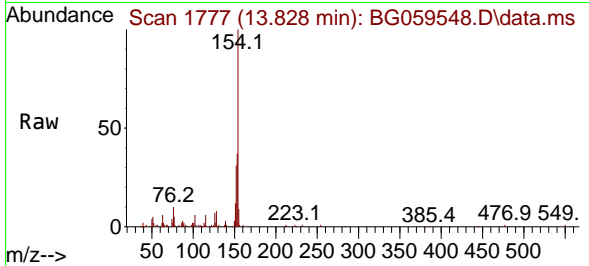
Tgt Ion:196 Resp: 19640
 Ion Ratio Lower Upper
 196 100
 198 81.2 79.8 119.6
 200 23.9 28.0 42.0#





#43
 1,1'-Biphenyl
 Concen: 3.611 ng/uI
 RT: 13.828 min Scan# 1777
 Delta R.T. -0.004 min
 Lab File: BG059548.D
 Acq: 30 Oct 2023 16:20

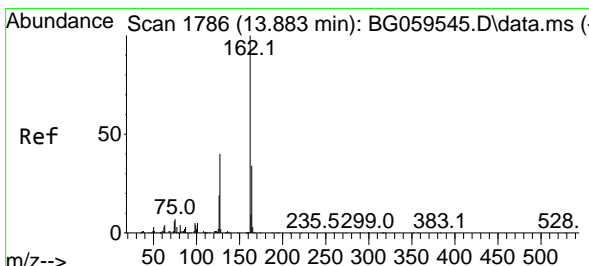
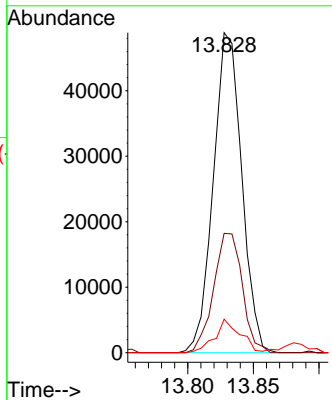
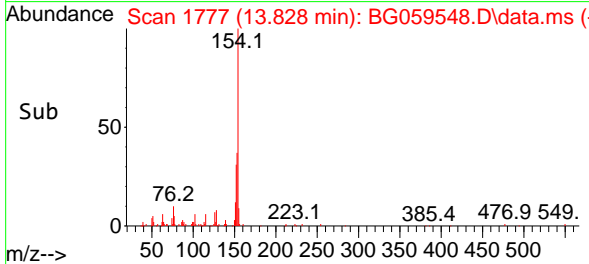
Instrument : BNA_G
 ClientSampleId : MDL-SOIL-QT4-2023-07



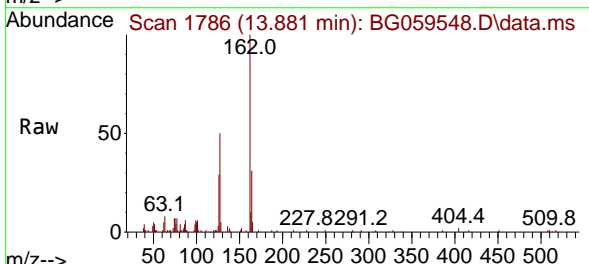
Tgt Ion:154 Resp: 7352
 Ion Ratio Lower Upper
 154 100
 153 37.3 30.7 46.1
 76 10.4 8.2 12.4

Manual Integrations
 APPROVED

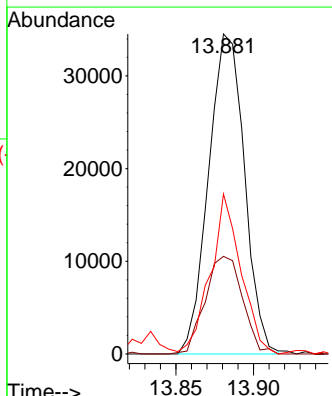
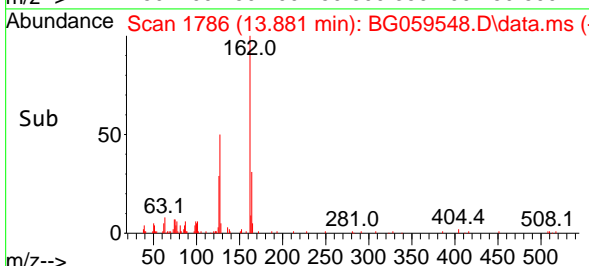
Reviewed By :Yogesh Patel 11/01/2023
 Supervised By :mohammad ahmed 11/01/2023

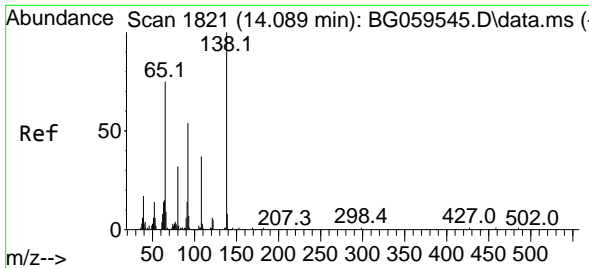


#44
 2-Chloronaphthalene
 Concen: 3.512 ng/uI
 RT: 13.881 min Scan# 1786
 Delta R.T. -0.004 min
 Lab File: BG059548.D
 Acq: 30 Oct 2023 16:20



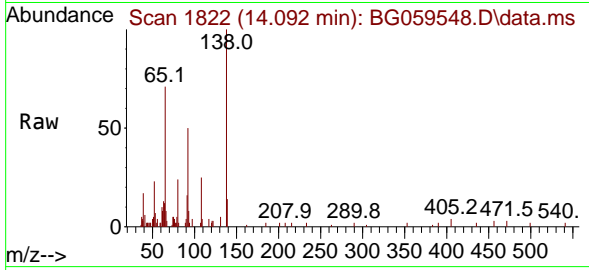
Tgt Ion:162 Resp: 55575
 Ion Ratio Lower Upper
 162 100
 164 30.5 23.9 35.9
 127 50.0 35.3 52.9





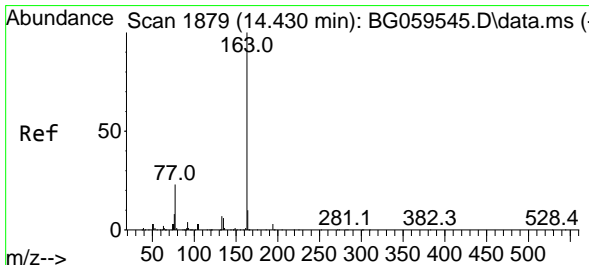
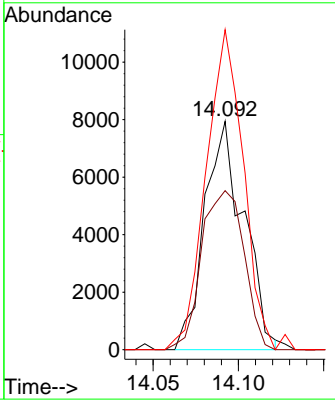
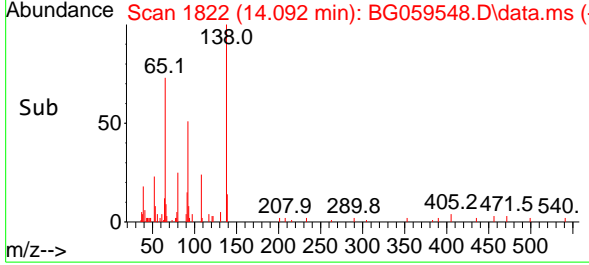
#45
 2-Nitroaniline
 Concen: 4.310 ng/ul
 RT: 14.092 min Scan# 1821
 Delta R.T. 0.002 min
 Lab File: BG059548.D
 Acq: 30 Oct 2023 16:20

Instrument : BNA_G
 ClientSampleId : MDL-SOIL-QT4-2023-07

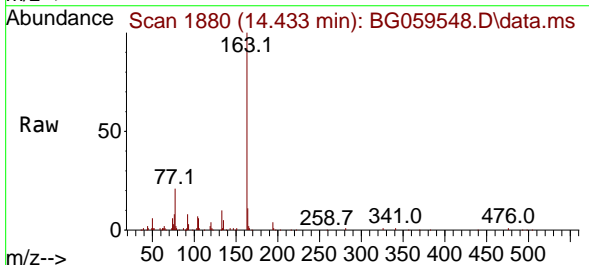


Tgt Ion: 65 Resp: 1269
 Ion Ratio Lower Upper
 65 100
 92 69.7 59.6 89.4
 138 140.1 109.0 163.6

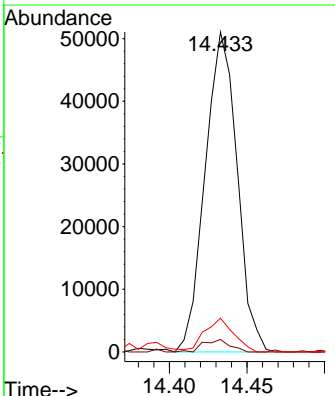
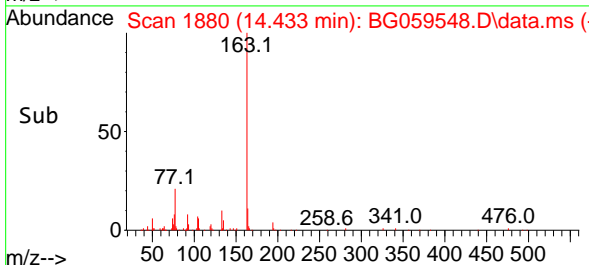
Manual Integrations
APPROVED
 Reviewed By :Yogesh Patel 11/01/2023
 Supervised By :mohammad ahmed 11/01/2023

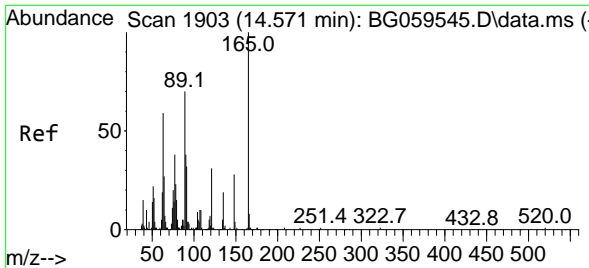


#47
 Dimethylphthalate
 Concen: 3.634 ng/ul
 RT: 14.433 min Scan# 1880
 Delta R.T. -0.004 min
 Lab File: BG059548.D
 Acq: 30 Oct 2023 16:20



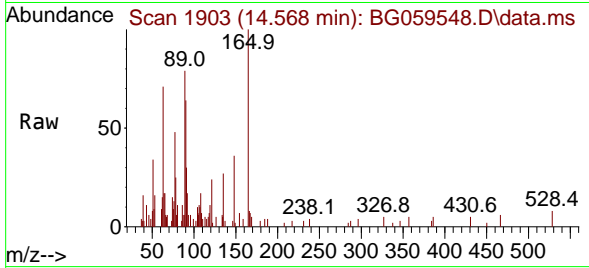
Tgt Ion:163 Resp: 73206
 Ion Ratio Lower Upper
 163 100
 194 3.9 2.6 3.8#
 164 10.5 6.6 10.0#





#48
 2,6-Dinitrotoluene
 Concen: 3.525 ng/uI
 RT: 14.568 min Scan# 1903
 Delta R.T. -0.004 min
 Lab File: BG059548.D
 Acq: 30 Oct 2023 16:20

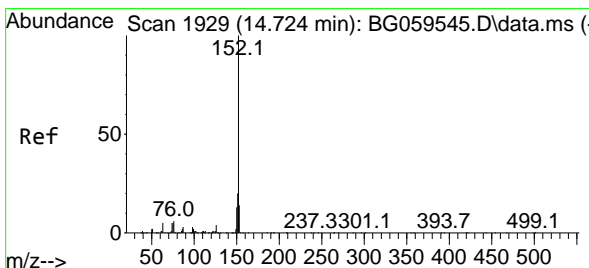
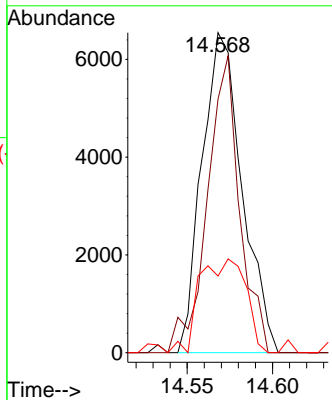
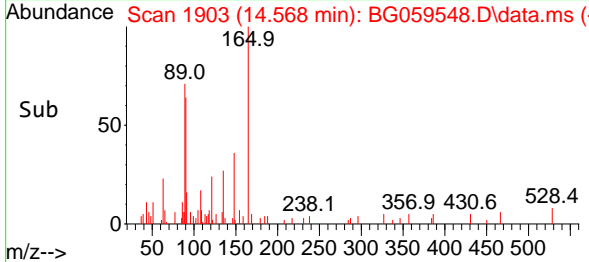
Instrument : BNA_G
 ClientSampleId : MDL-SOIL-QT4-2023-07



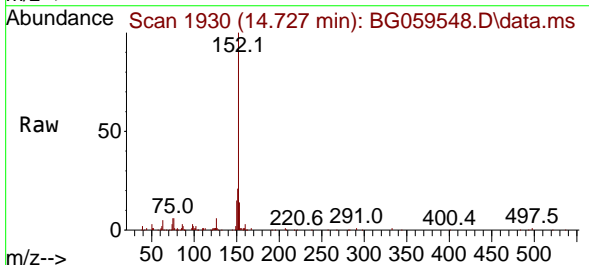
Tgt Ion	Ratio	Lower	Upper
165	100		
89	79.2	41.0	61.4
121	24.0	12.3	18.5

Manual Integrations
APPROVED

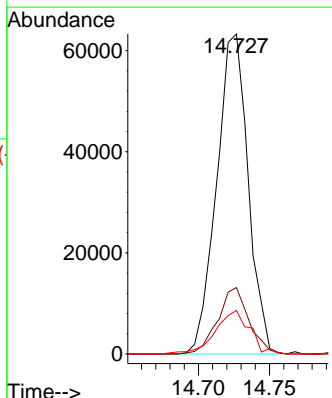
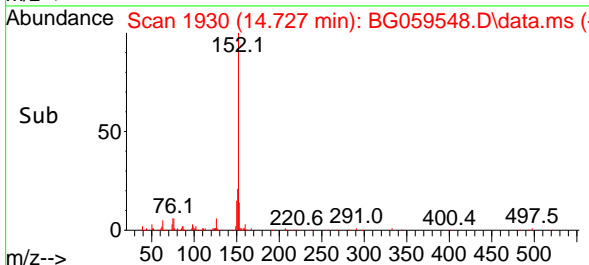
Reviewed By :Yogesh Patel 11/01/2023
 Supervised By :mohammad ahmed 11/01/2023

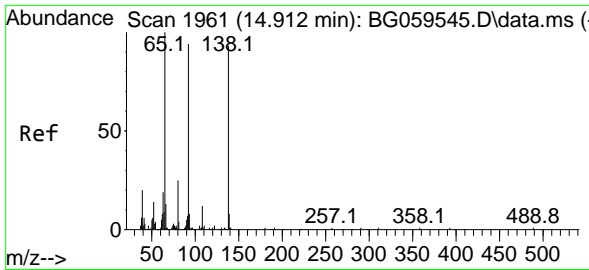


#50
 Acenaphthylene
 Concen: 3.535 ng/uI
 RT: 14.727 min Scan# 1930
 Delta R.T. 0.002 min
 Lab File: BG059548.D
 Acq: 30 Oct 2023 16:20



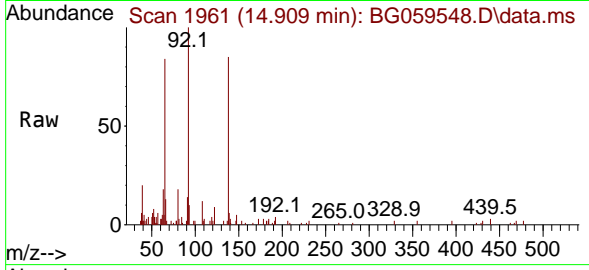
Tgt Ion	Ratio	Lower	Upper
152	100		
151	20.8	16.6	25.0
153	13.6	9.4	14.2





#51
 3-Nitroaniline
 Concen: 3.614 ng/uI
 RT: 14.909 min Scan# 1961
 Delta R.T. 0.002 min
 Lab File: BG059548.D
 Acq: 30 Oct 2023 16:20

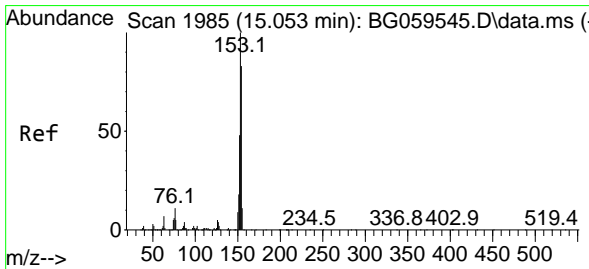
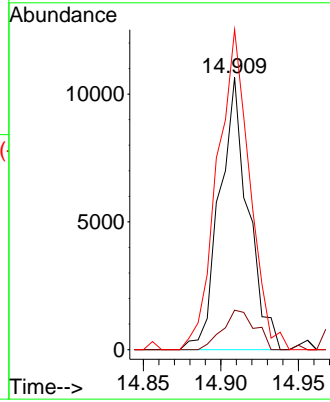
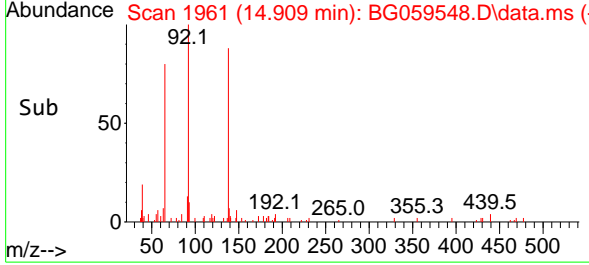
Instrument : BNA_G
 ClientSampleId : MDL-SOIL-QT4-2023-07



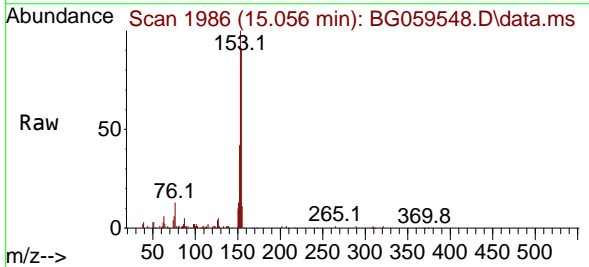
Tgt Ion:138 Resp: 13690
 Ion Ratio Lower Upper
 138 100
 108 14.5 17.1 25.7
 92 117.5 101.8 152.8

Manual Integrations
 APPROVED

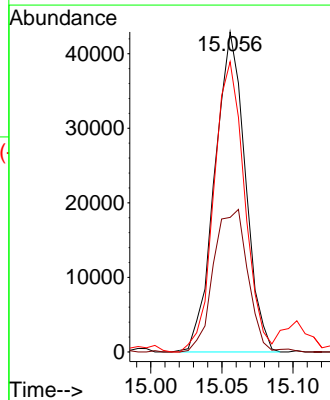
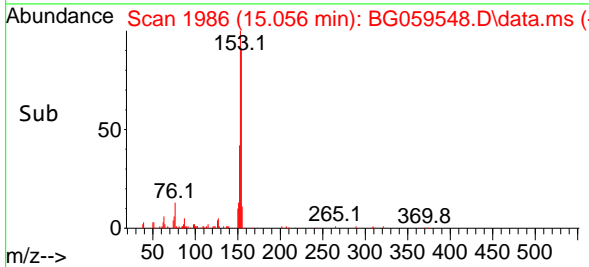
Reviewed By :Yogesh Patel 11/01/2023
 Supervised By :mohammad ahmed 11/01/2023

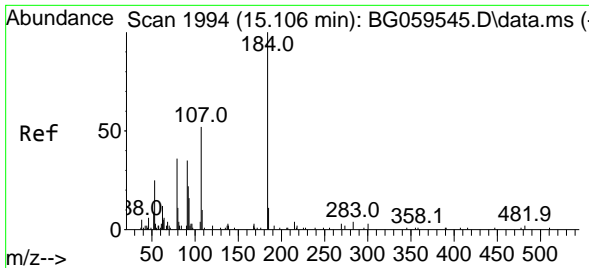


#52
 Acenaphthene
 Concen: 3.570 ng/uI
 RT: 15.056 min Scan# 1986
 Delta R.T. 0.002 min
 Lab File: BG059548.D
 Acq: 30 Oct 2023 16:20



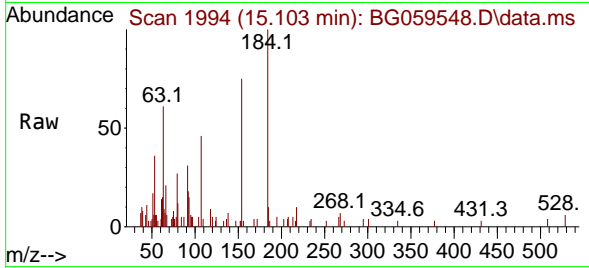
Tgt Ion:153 Resp: 64160
 Ion Ratio Lower Upper
 153 100
 152 42.0 37.6 56.4
 154 90.7 69.4 104.0





#53
 2,4-Dinitrophenol
 Concen: 4.444 ng/ul
 RT: 15.103 min Scan# 1994
 Delta R.T. 0.002 min
 Lab File: BG059548.D
 Acq: 30 Oct 2023 16:20

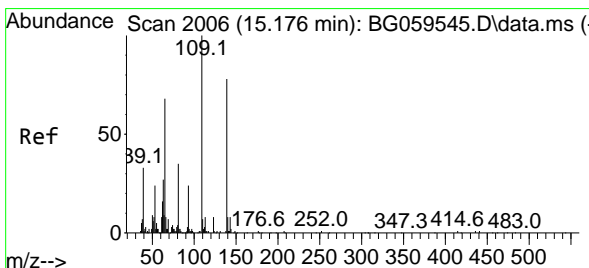
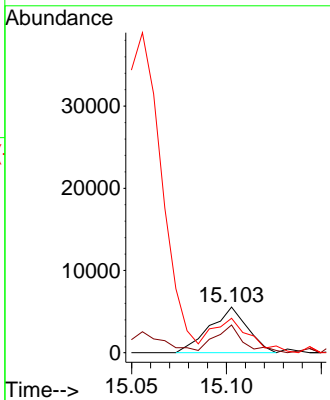
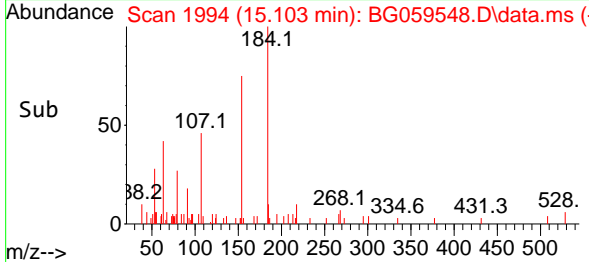
Instrument : BNA_G
 ClientSampleId : MDL-SOIL-QT4-2023-07



Tgt Ion:184 Resp: 7674
 Ion Ratio Lower Upper
 184 100
 63 60.8 35.0 52.6
 154 75.4 49.8 74.8

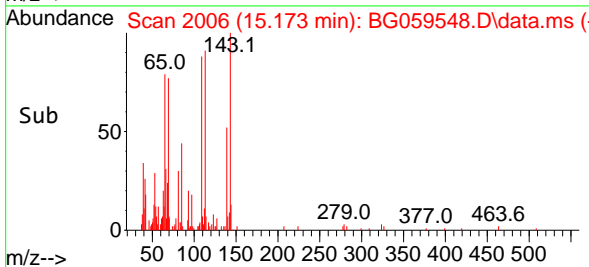
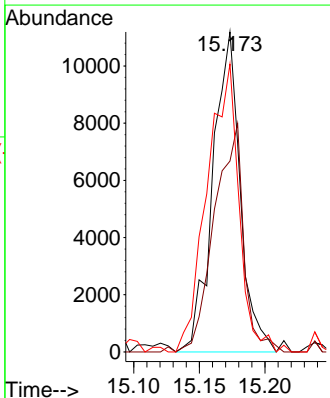
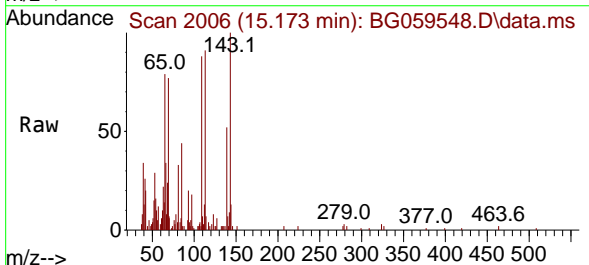
Manual Integrations
APPROVED

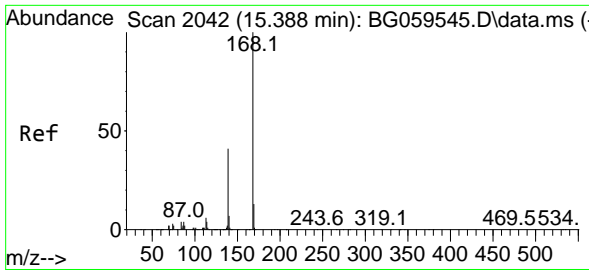
Reviewed By :Yogesh Patel 11/01/2023
 Supervised By :mohammad ahmed 11/01/2023



#55
 4-Nitrophenol
 Concen: 4.210 ng/ul
 RT: 15.173 min Scan# 2006
 Delta R.T. 0.008 min
 Lab File: BG059548.D
 Acq: 30 Oct 2023 16:20

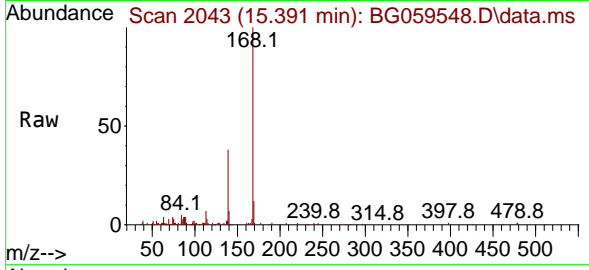
Tgt Ion:109 Resp: 16223
 Ion Ratio Lower Upper
 109 100
 139 59.6 72.2 108.2#
 65 90.0 57.3 85.9#





#56
 Dibenzofuran
 Concen: 3.691 ng/uI
 RT: 15.391 min Scan# 2043
 Delta R.T. 0.002 min
 Lab File: BG059548.D
 Acq: 30 Oct 2023 16:20

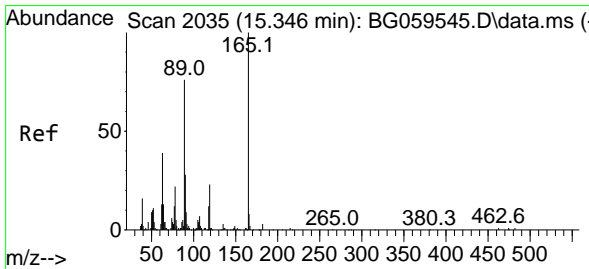
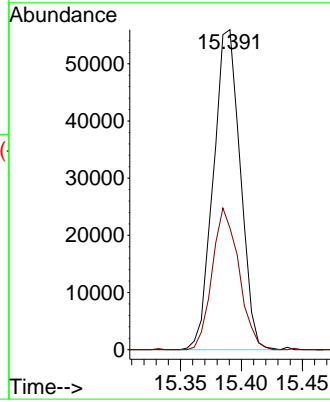
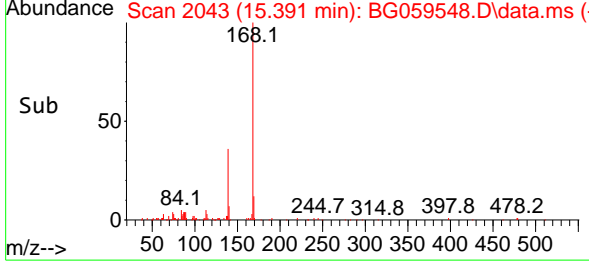
Instrument : BNA_G
 Client Sample Id : MDL-SOIL-QT4-2023-07



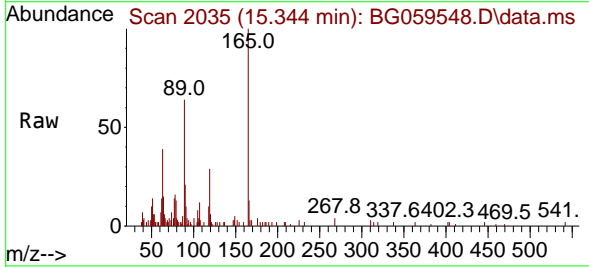
Tgt Ion:168 Resp: 86000
 Ion Ratio Lower Upper
 168 100
 139 38.0 33.8 50.8

Manual Integrations
APPROVED

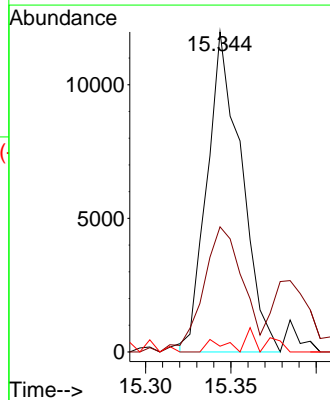
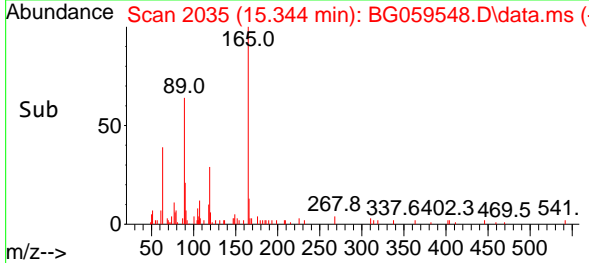
Reviewed By :Yogesh Patel 11/01/2023
 Supervised By :mohammad ahmed 11/01/2023

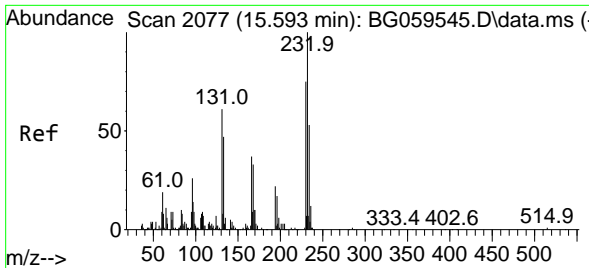


#57
 2,4-Dinitrotoluene
 Concen: 3.909 ng/uI
 RT: 15.344 min Scan# 2035
 Delta R.T. -0.004 min
 Lab File: BG059548.D
 Acq: 30 Oct 2023 16:20



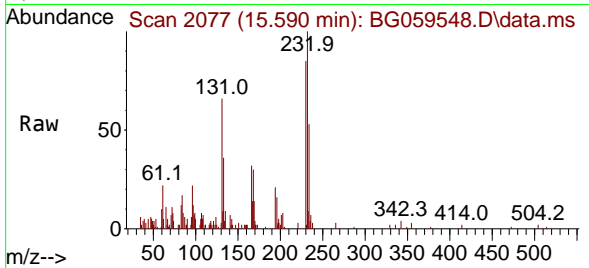
Tgt Ion:165 Resp: 16710
 Ion Ratio Lower Upper
 165 100
 63 39.1 30.9 46.3
 182 1.8 1.8 2.6





#58
 2,3,4,6-Tetrachlorophenol
 Concen: 4.173 ng/ul
 RT: 15.590 min Scan# 2077
 Delta R.T. 0.002 min
 Lab File: BG059548.D
 Acq: 30 Oct 2023 16:20

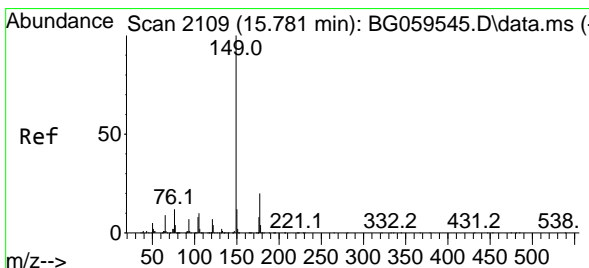
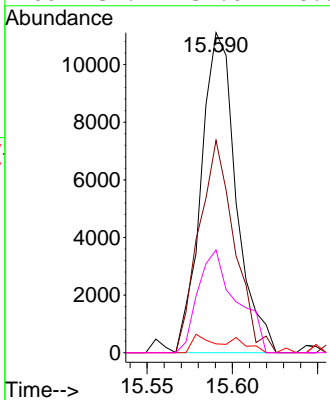
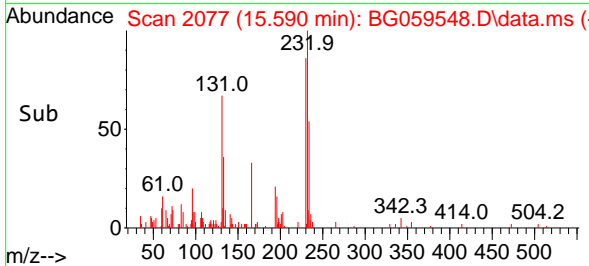
Instrument : BNA_G
 ClientSampleId : MDL-SOIL-QT4-2023-07



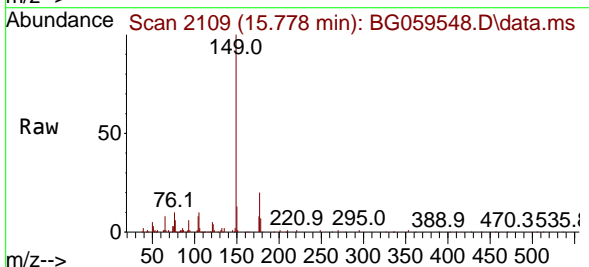
Tgt Ion:232 Resp: 15938
 Ion Ratio Lower Upper
 232 100
 131 66.3 44.2 66.2
 130 2.8 2.3 3.5
 166 32.1 32.6 48.8#

Manual Integrations
APPROVED

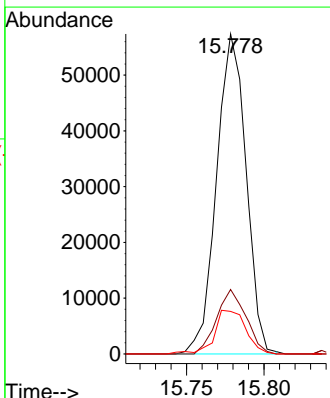
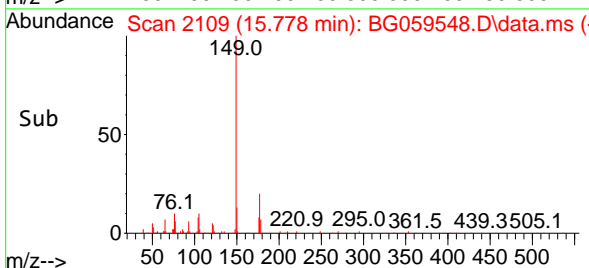
Reviewed By :Yogesh Patel 11/01/2023
 Supervised By :mohammad ahmed 11/01/2023

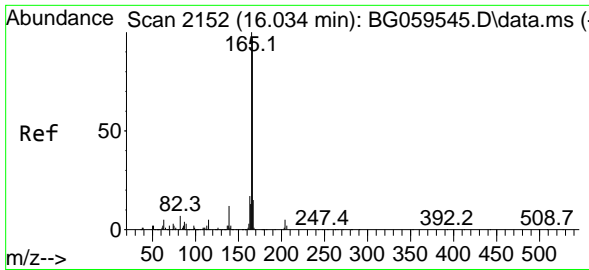


#59
 Diethylphthalate
 Concen: 3.457 ng/ul
 RT: 15.778 min Scan# 2109
 Delta R.T. -0.004 min
 Lab File: BG059548.D
 Acq: 30 Oct 2023 16:20



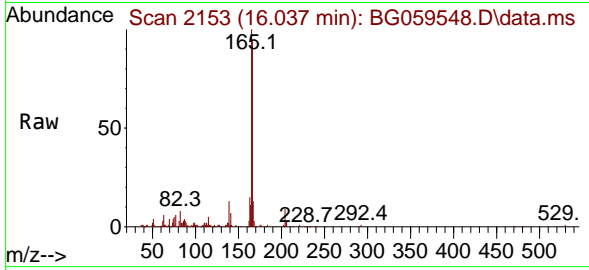
Tgt Ion:149 Resp: 75968
 Ion Ratio Lower Upper
 149 100
 177 20.2 16.3 24.5
 150 13.3 9.1 13.7





#61
 Fluorene
 Concen: 3.845 ng/ul
 RT: 16.037 min Scan# 2153
 Delta R.T. 0.002 min
 Lab File: BG059548.D
 Acq: 30 Oct 2023 16:20

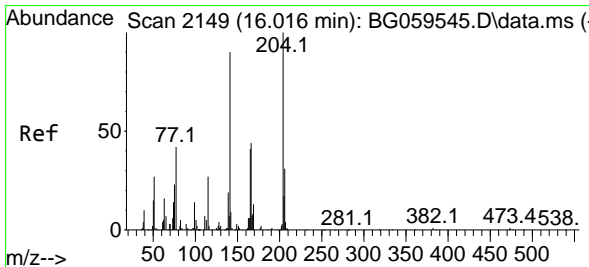
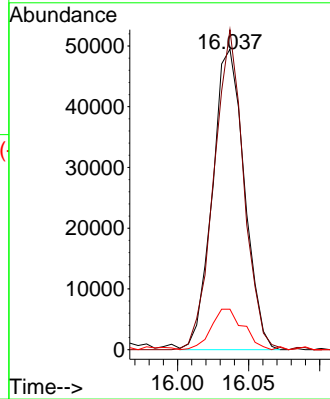
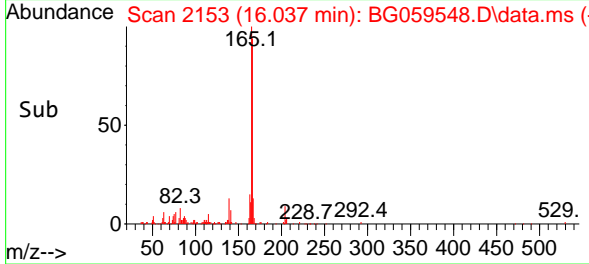
Instrument :
 BNA_G
 ClientSampleId :
 MDL-SOIL-QT4-2023-07



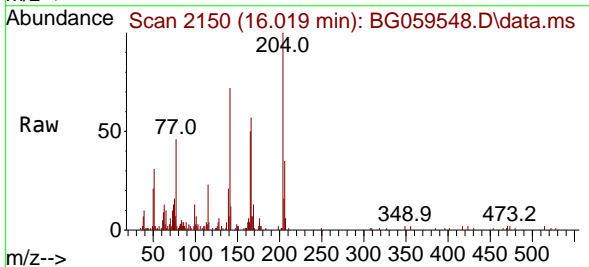
Tgt Ion:166 Resp: 77339
 Ion Ratio Lower Upper
 166 100
 165 106.5 74.4 111.6
 167 13.5 9.1 13.7

Manual Integrations
 APPROVED

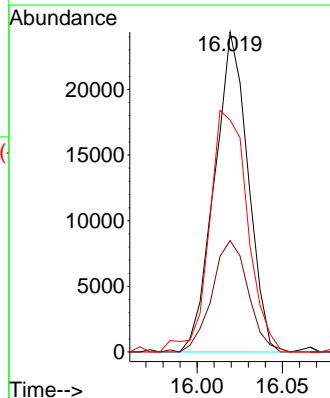
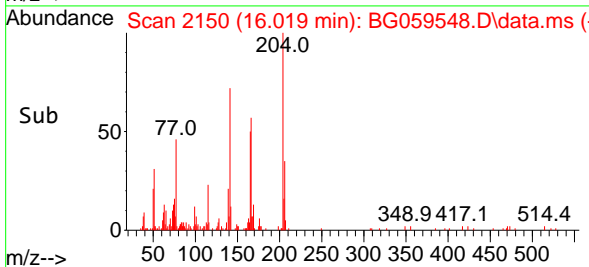
Reviewed By :Yogesh Patel 11/01/2023
 Supervised By :mohammad ahmed 11/01/2023

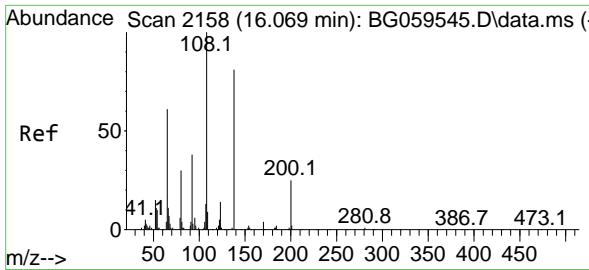


#62
 4-Chlorophenyl-phenylether
 Concen: 3.866 ng/ul
 RT: 16.019 min Scan# 2150
 Delta R.T. -0.004 min
 Lab File: BG059548.D
 Acq: 30 Oct 2023 16:20



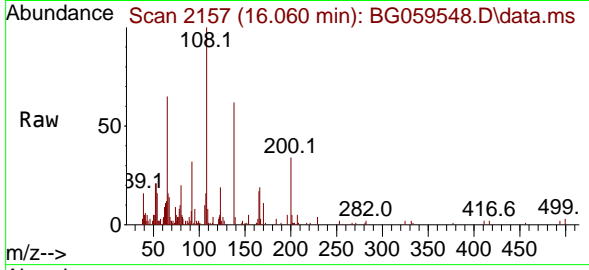
Tgt Ion:204 Resp: 33233
 Ion Ratio Lower Upper
 204 100
 206 34.8 28.8 43.2
 141 72.4 68.6 103.0





#63
 4-Nitroaniline
 Concen: 4.123 ng/ul
 RT: 16.060 min Scan# 2157
 Delta R.T. -0.009 min
 Lab File: BG059548.D
 Acq: 30 Oct 2023 16:20

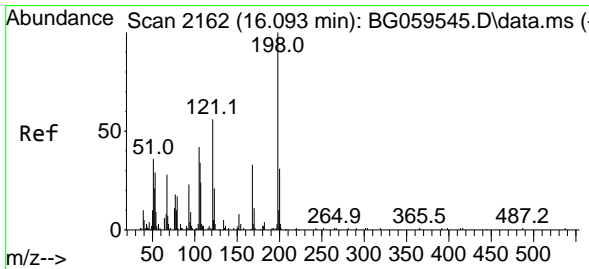
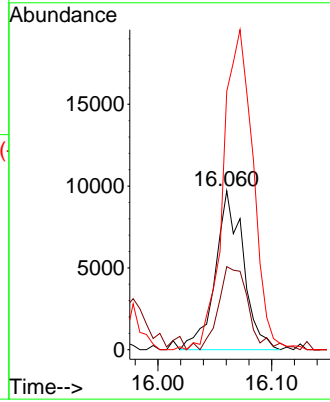
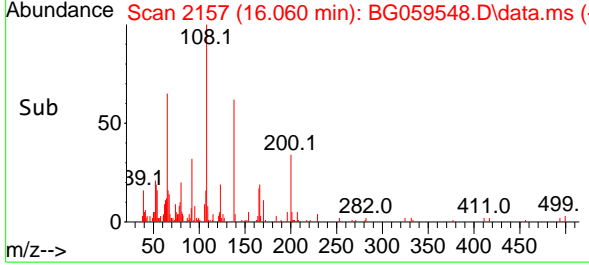
Instrument : BNA_G
 ClientSampleId : MDL-SOIL-QT4-2023-07



Tgt Ion:138 Resp: 1657
 Ion Ratio Lower Upper
 138 100
 92 52.3 49.8 74.8
 108 162.5 100.9 151.3

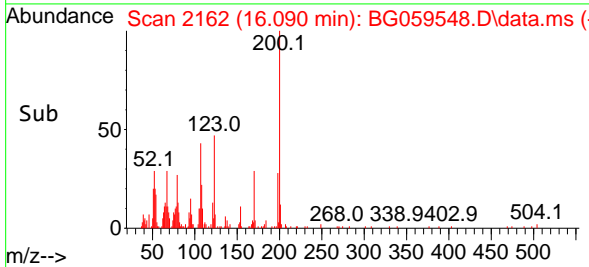
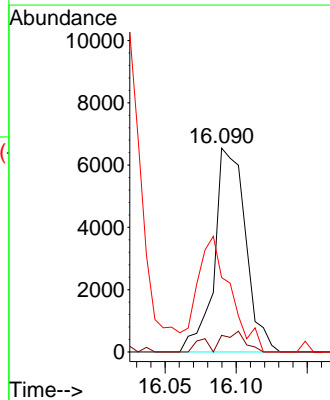
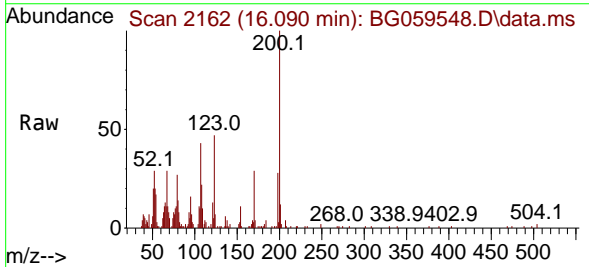
Manual Integrations
APPROVED

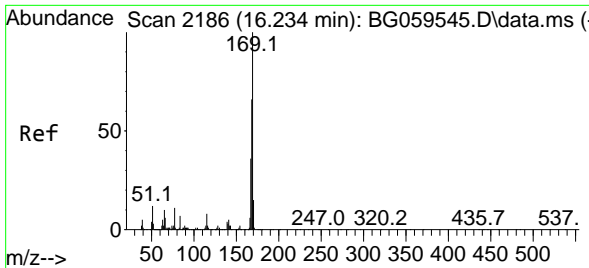
Reviewed By :Yogesh Patel 11/01/2023
 Supervised By :mohammad ahmed 11/01/2023



#66
 4,6-Dinitro-2-methylphenol
 Concen: 3.947 ng/ul
 RT: 16.090 min Scan# 2162
 Delta R.T. -0.004 min
 Lab File: BG059548.D
 Acq: 30 Oct 2023 16:20

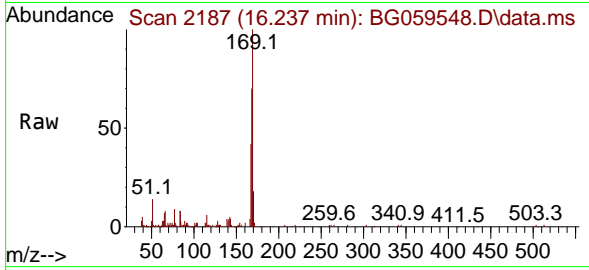
Tgt Ion:198 Resp: 10010
 Ion Ratio Lower Upper
 198 100
 182 8.2 1.4 2.0#
 77 36.5 15.8 23.8#





#67
 N-Nitrosodiphenylamine
 Concen: 3.646 ng/ul
 RT: 16.237 min Scan# 2186
 Delta R.T. 0.002 min
 Lab File: BG059548.D
 Acq: 30 Oct 2023 16:20

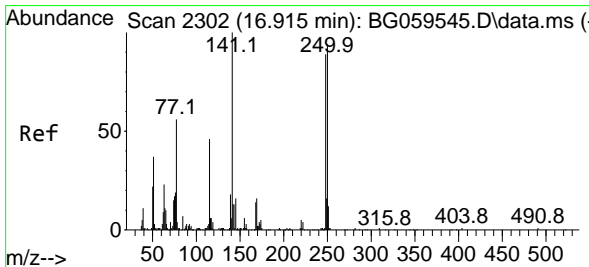
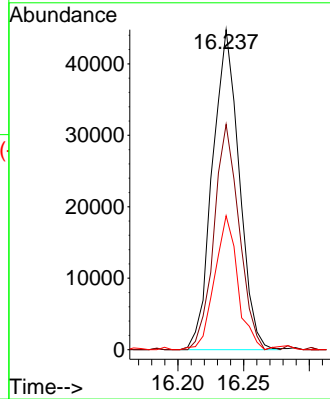
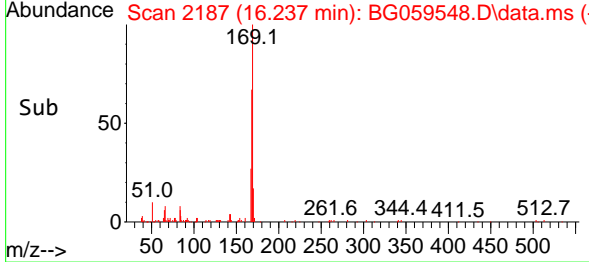
Instrument :
 BNA_G
 ClientSampleId :
 MDL-SOIL-QT4-2023-07



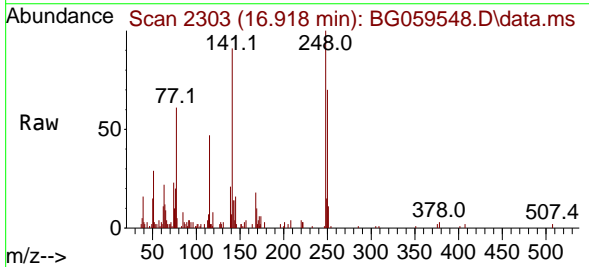
Tgt Ion:169 Resp: 63304
 Ion Ratio Lower Upper
 169 100
 168 70.4 54.2 81.2
 167 41.9 31.3 46.9

Manual Integrations
 APPROVED

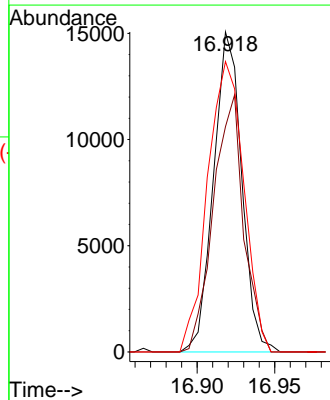
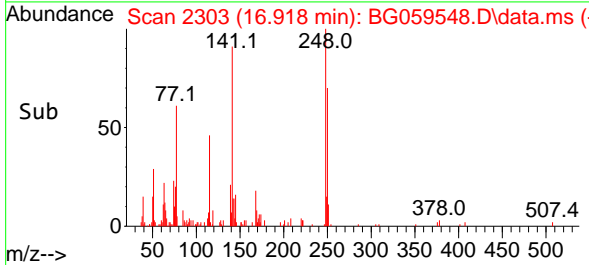
Reviewed By :Yogesh Patel 11/01/2023
 Supervised By :mohammad ahmed 11/01/2023

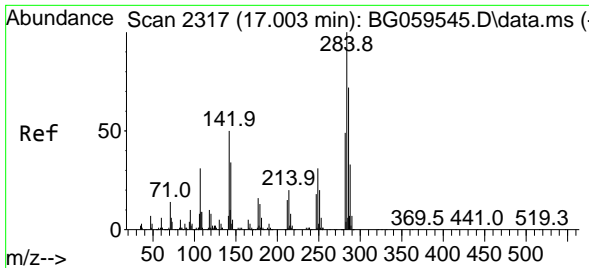


#68
 4-Bromophenyl-phenylether
 Concen: 3.738 ng/ul
 RT: 16.918 min Scan# 2303
 Delta R.T. 0.002 min
 Lab File: BG059548.D
 Acq: 30 Oct 2023 16:20



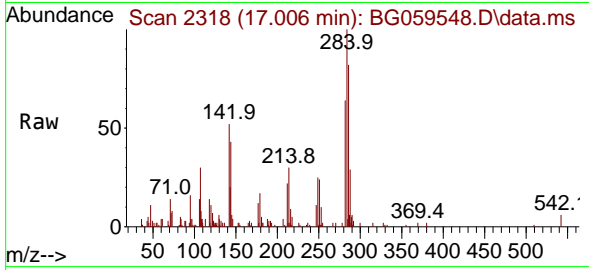
Tgt Ion:248 Resp: 19007
 Ion Ratio Lower Upper
 248 100
 250 70.4 74.2 111.2#
 141 90.8 88.5 132.7





#69
 Hexachlorobenzene
 Concen: 3.592 ng/u1
 RT: 17.006 min Scan# 2110
 Delta R.T. 0.002 min
 Lab File: BG059548.D
 Acq: 30 Oct 2023 16:20

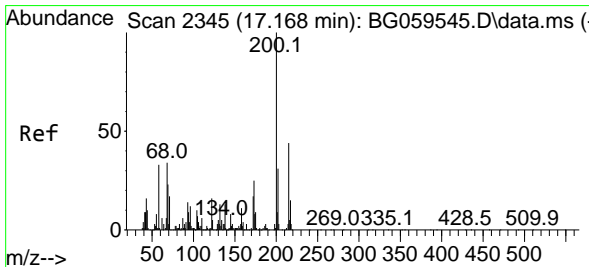
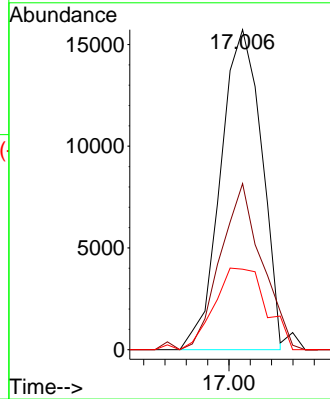
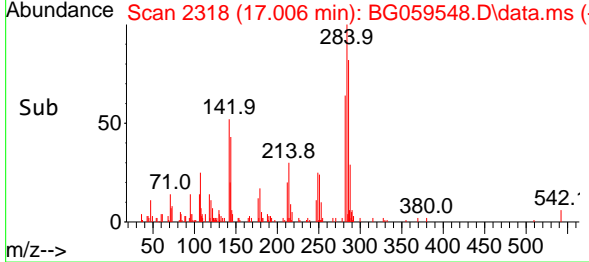
Instrument : BNA_G
 ClientSampleId : MDL-SOIL-QT4-2023-07



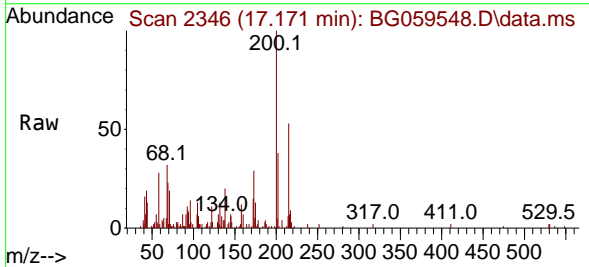
Tgt Ion:284 Resp: 2110
 Ion Ratio Lower Upper
 284 100
 142 51.9 39.6 59.4
 249 25.2 28.2 42.2

Manual Integrations
 APPROVED

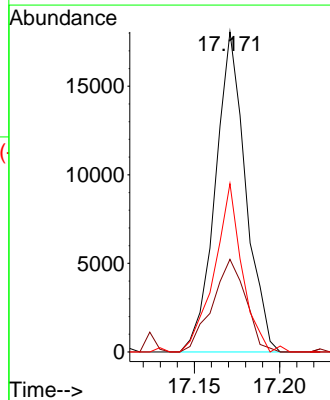
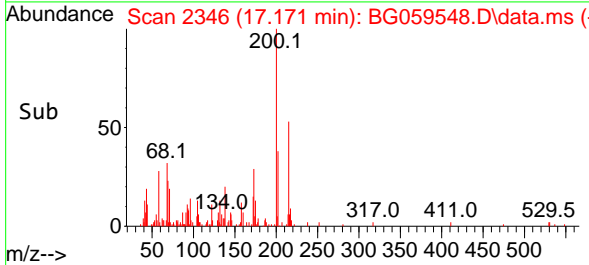
Reviewed By :Yogesh Patel 11/01/2023
 Supervised By :mohammad ahmed 11/01/2023

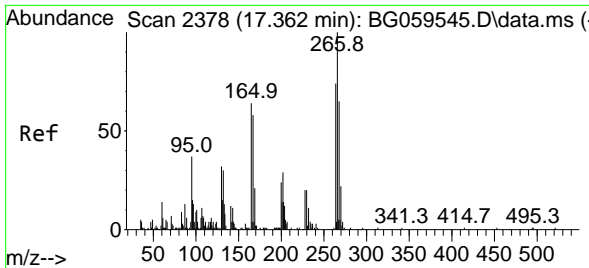


#70
 Atrazine
 Concen: 4.156 ng/u1
 RT: 17.171 min Scan# 2346
 Delta R.T. -0.004 min
 Lab File: BG059548.D
 Acq: 30 Oct 2023 16:20



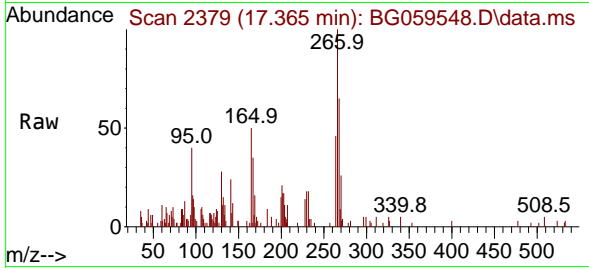
Tgt Ion:200 Resp: 22355
 Ion Ratio Lower Upper
 200 100
 173 28.9 25.7 38.5
 215 52.6 32.1 48.1





#71
 Pentachlorophenol
 Concen: 4.310 ng/u1
 RT: 17.365 min Scan# 21
 Delta R.T. 0.008 min
 Lab File: BG059548.D
 Acq: 30 Oct 2023 16:20

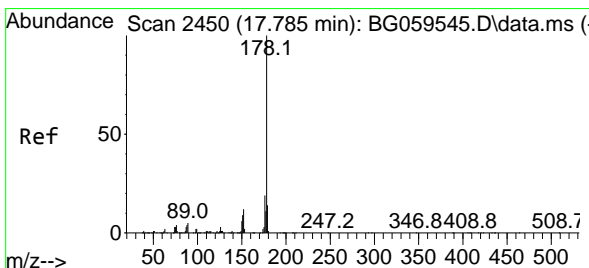
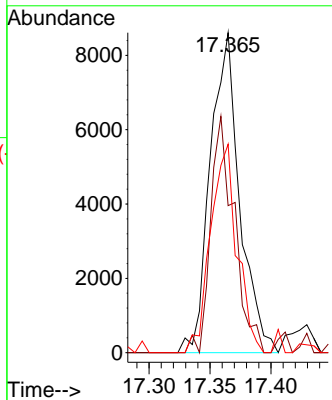
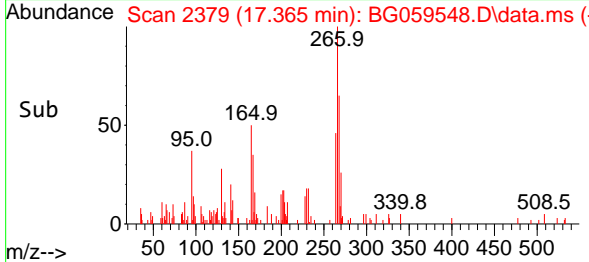
Instrument :
 BNA_G
 ClientSampleId :
 MDL-SOIL-QT4-2023-07



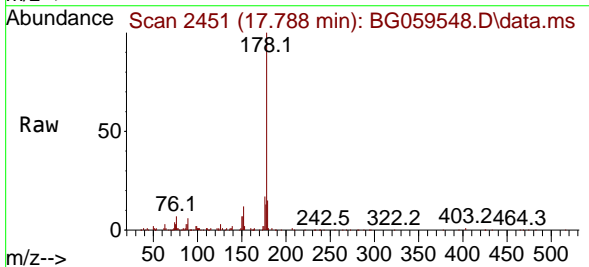
Tgt Ion:266 Resp: 1446
 Ion Ratio Lower Upper
 266 100
 264 46.0 46.2 69.2
 268 65.2 46.4 69.6

Manual Integrations
APPROVED

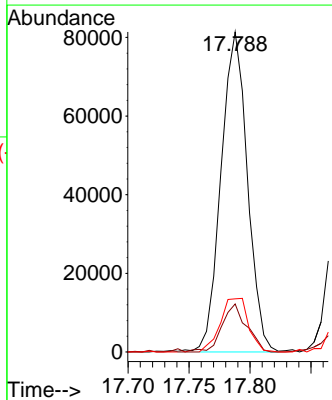
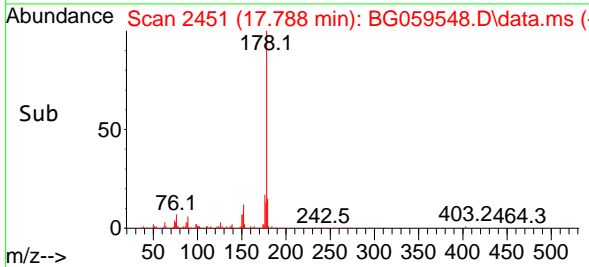
Reviewed By :Yogesh Patel 11/01/2023
 Supervised By :mohammad ahmed 11/01/2023

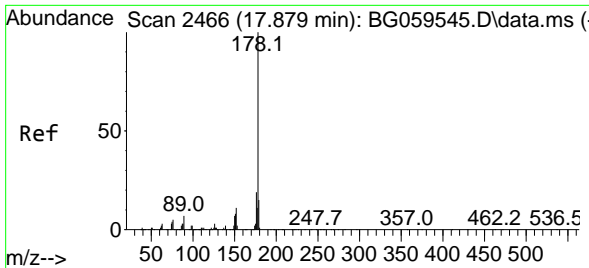


#72
 Phenanthrene
 Concen: 3.713 ng/u1
 RT: 17.788 min Scan# 2451
 Delta R.T. 0.002 min
 Lab File: BG059548.D
 Acq: 30 Oct 2023 16:20



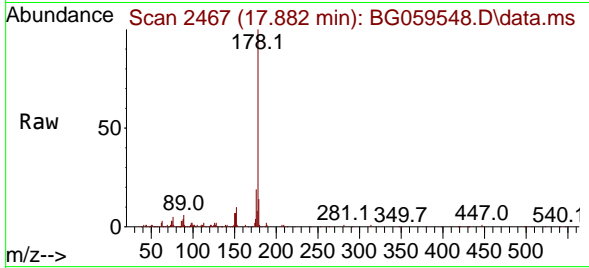
Tgt Ion:178 Resp: 122643
 Ion Ratio Lower Upper
 178 100
 179 15.0 11.3 16.9
 176 16.6 15.4 23.0





#74
 Anthracene
 Concen: 3.629 ng/uI
 RT: 17.882 min Scan# 2467
 Delta R.T. 0.002 min
 Lab File: BG059548.D
 Acq: 30 Oct 2023 16:20

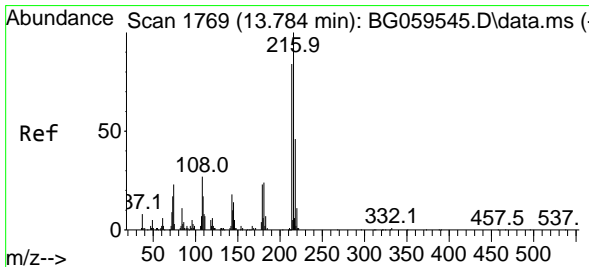
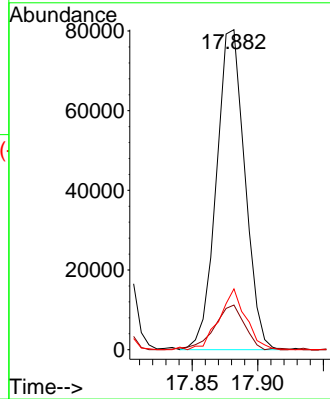
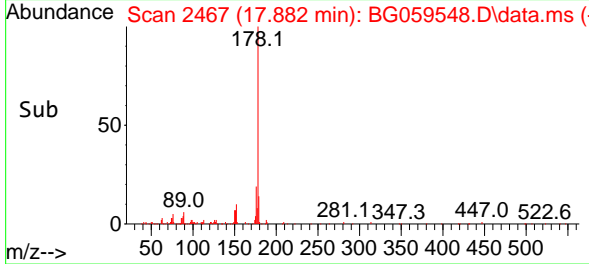
Instrument : BNA_G
 ClientSampleId : MDL-SOIL-QT4-2023-07



Tgt Ion:178 Resp: 12103
 Ion Ratio Lower Upper
 178 100
 179 14.0 13.1 19.7
 176 19.0 13.9 20.9

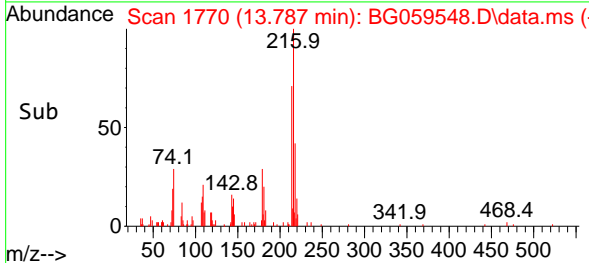
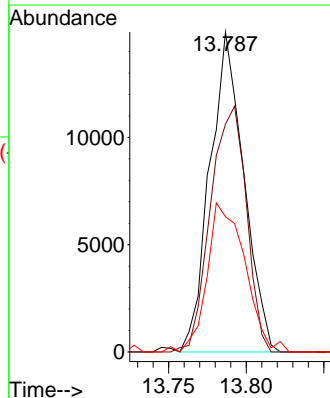
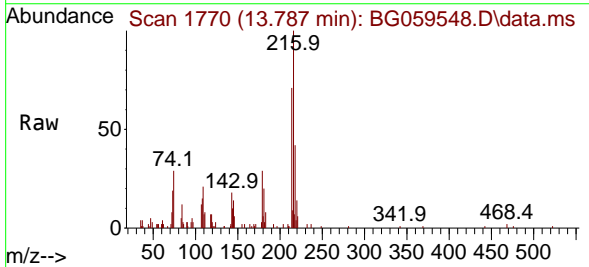
Manual Integrations
APPROVED

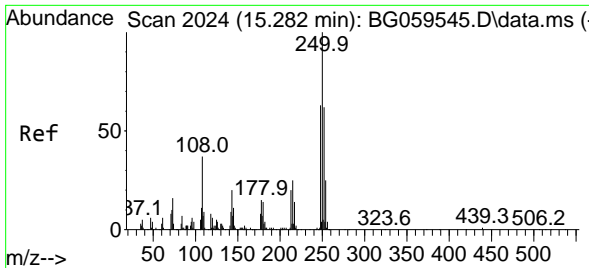
Reviewed By :Yogesh Patel 11/01/2023
 Supervised By :mohammad ahmed 11/01/2023



#75
 1,2,3,4-Tetrachlorobenzene
 Concen: 3.359 ng/uL
 RT: 13.787 min Scan# 1770
 Delta R.T. -0.004 min
 Lab File: BG059548.D
 Acq: 30 Oct 2023 16:20

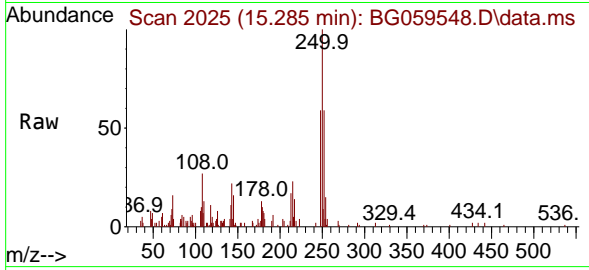
Tgt Ion:216 Resp: 22728
 Ion Ratio Lower Upper
 216 100
 214 71.2 70.2 105.2
 218 42.2 39.9 59.9





#76
 Pentachlorobenzene
 Concen: 3.731 ng/uL
 RT: 15.285 min Scan# 2024
 Delta R.T. 0.002 min
 Lab File: BG059548.D
 Acq: 30 Oct 2023 16:20

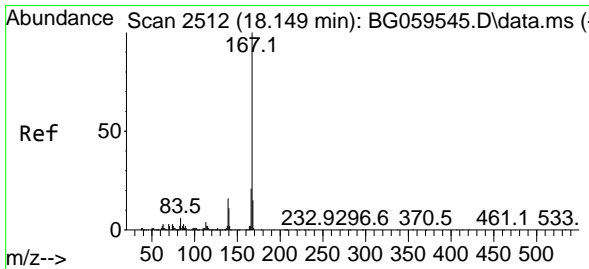
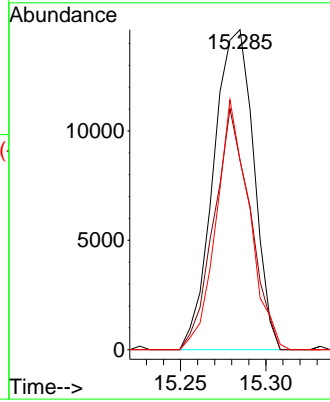
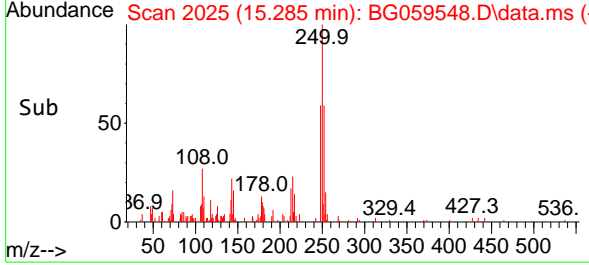
Instrument : BNA_G
 ClientSampleId : MDL-SOIL-QT4-2023-07



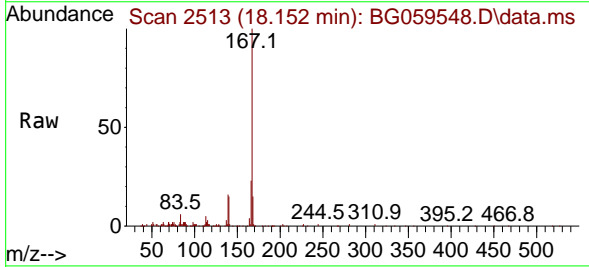
Tgt Ion:250 Resp: 23954
 Ion Ratio Lower Upper
 250 100
 248 59.2 48.7 73.1
 252 59.1 51.2 76.8

Manual Integrations
APPROVED

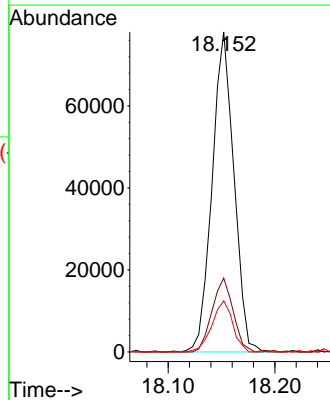
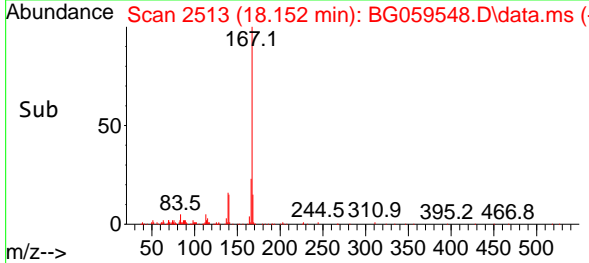
Reviewed By :Yogesh Patel 11/01/2023
 Supervised By :mohammad ahmed 11/01/2023

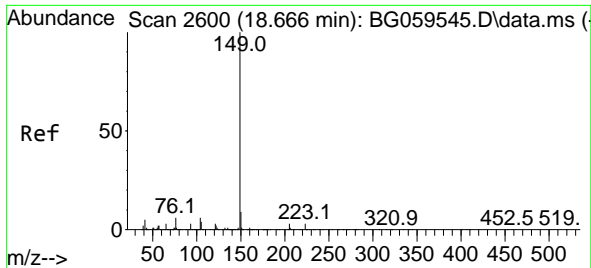


#77
 Carbazole
 Concen: 3.860 ng/uL
 RT: 18.152 min Scan# 2513
 Delta R.T. 0.002 min
 Lab File: BG059548.D
 Acq: 30 Oct 2023 16:20



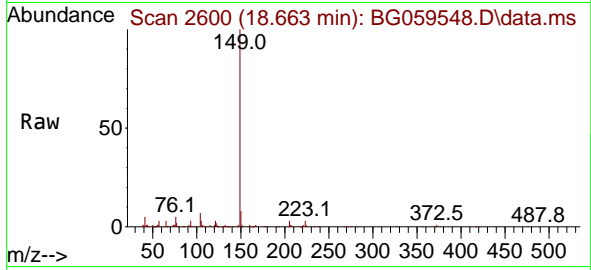
Tgt Ion:167 Resp: 110595
 Ion Ratio Lower Upper
 167 100
 166 23.1 19.4 29.2
 139 16.0 11.7 17.5





#78
 Di-n-butylphthalate
 Concen: 3.626 ng/uI
 RT: 18.663 min Scan# 2600
 Delta R.T. -0.004 min
 Lab File: BG059548.D
 Acq: 30 Oct 2023 16:20

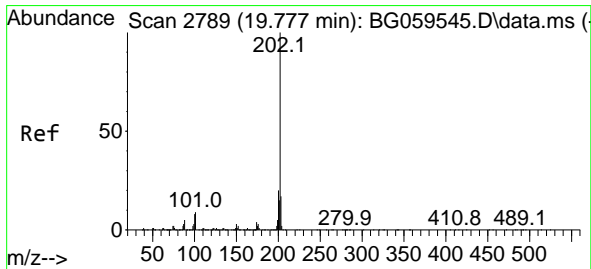
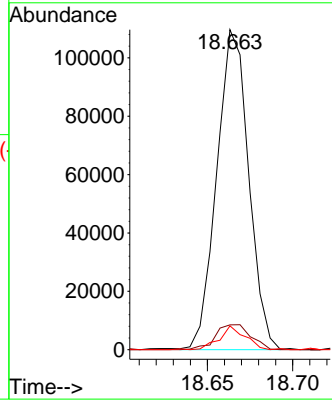
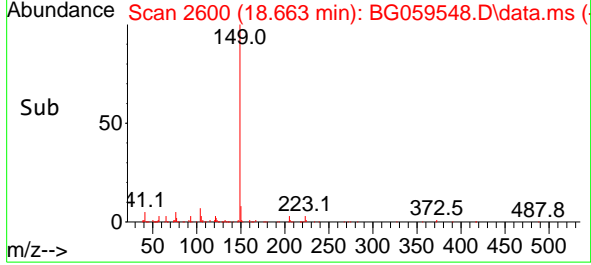
Instrument : BNA_G
 ClientSampleId : MDL-SOIL-QT4-2023-07



Tgt Ion:149 Resp: 14274
 Ion Ratio Lower Upper
 149 100
 150 7.7 7.5 11.3
 104 7.5 5.3 7.9

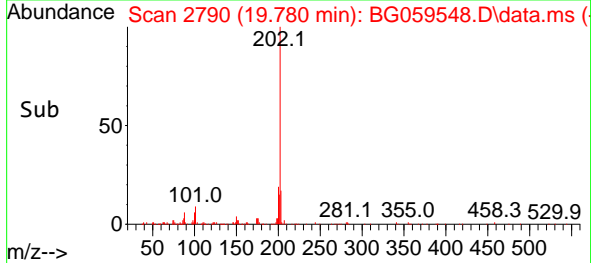
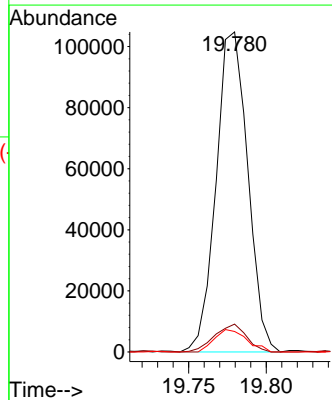
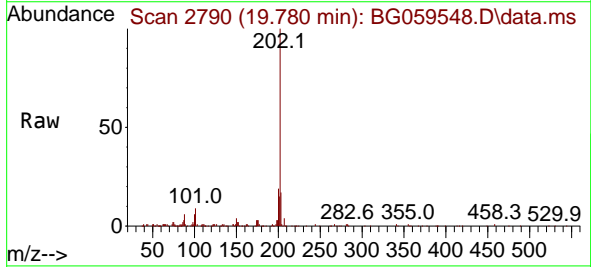
Manual Integrations
APPROVED

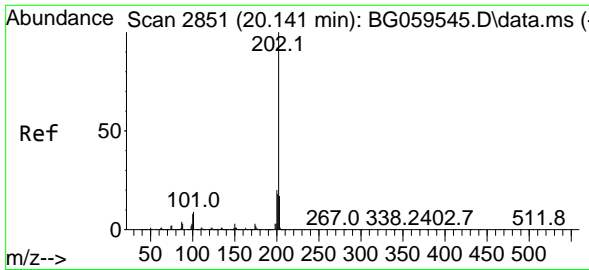
Reviewed By :Yogesh Patel 11/01/2023
 Supervised By :mohammad ahmed 11/01/2023



#80
 Fluoranthene
 Concen: 3.741 ng/uI
 RT: 19.780 min Scan# 2790
 Delta R.T. 0.002 min
 Lab File: BG059548.D
 Acq: 30 Oct 2023 16:20

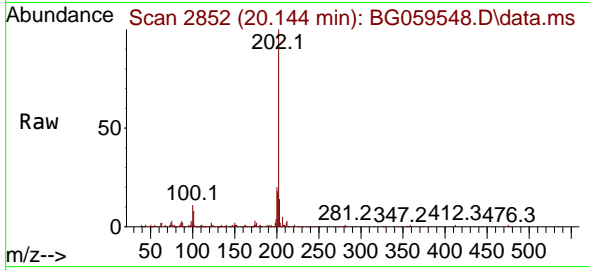
Tgt Ion:202 Resp: 148696
 Ion Ratio Lower Upper
 202 100
 101 8.7 7.0 10.6
 100 6.4 5.2 7.8





#82
 Pyrene
 Concen: 3.662 ng/u1
 RT: 20.144 min Scan# 2115
 Delta R.T. 0.002 min
 Lab File: BG059548.D
 Acq: 30 Oct 2023 16:20

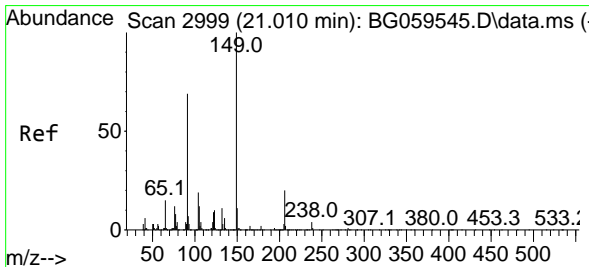
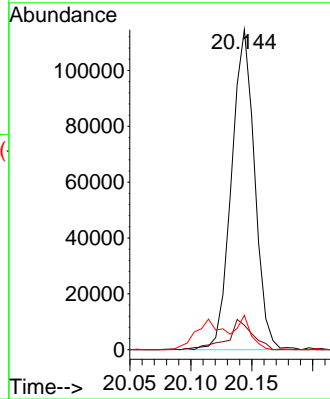
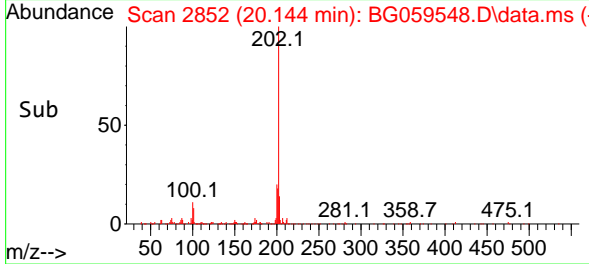
Instrument :
 BNA_G
 ClientSampleId :
 MDL-SOIL-QT4-2023-07



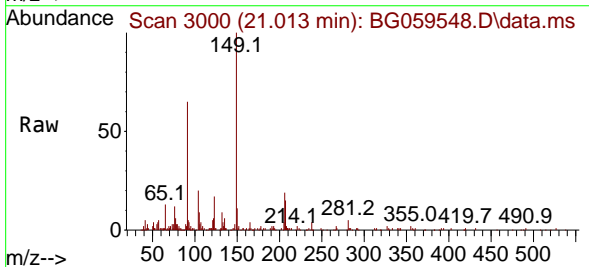
Tgt Ion:202 Resp: 15115
 Ion Ratio Lower Upper
 202 100
 101 7.6 7.9 11.9
 100 10.8 7.9 11.9

Manual Integrations
 APPROVED

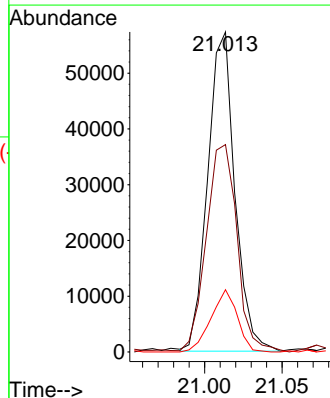
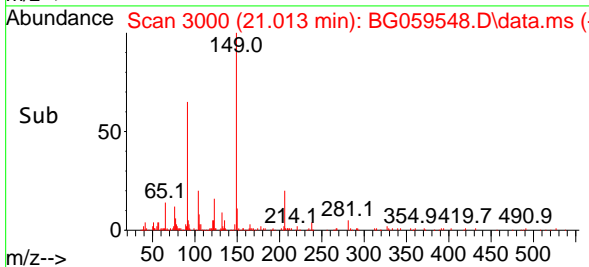
Reviewed By :Yogesh Patel 11/01/2023
 Supervised By :mohammad ahmed 11/01/2023

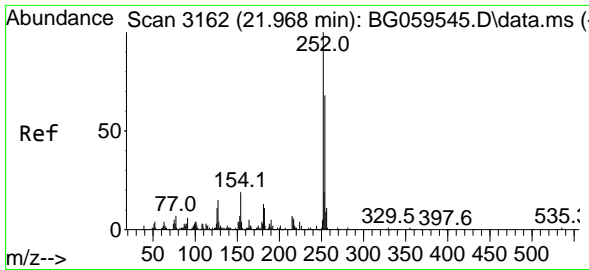


#83
 Butylbenzylphthalate
 Concen: 3.739 ng/u1
 RT: 21.013 min Scan# 3000
 Delta R.T. -0.004 min
 Lab File: BG059548.D
 Acq: 30 Oct 2023 16:20



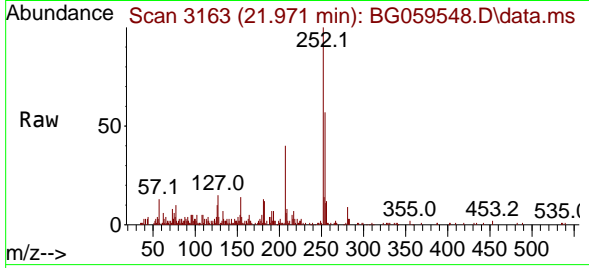
Tgt Ion:149 Resp: 69712
 Ion Ratio Lower Upper
 149 100
 91 64.8 52.2 78.2
 206 19.5 15.1 22.7





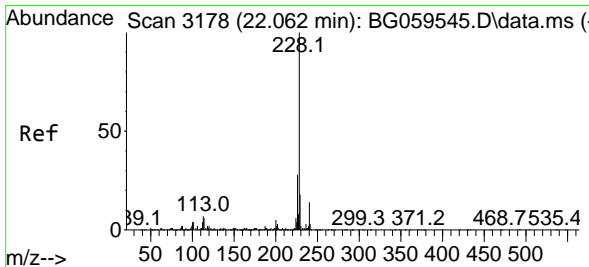
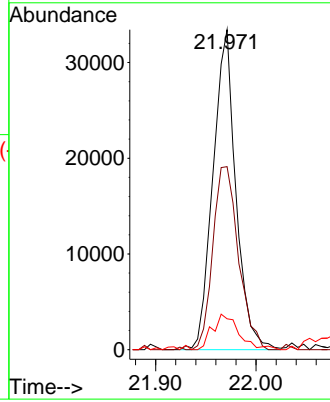
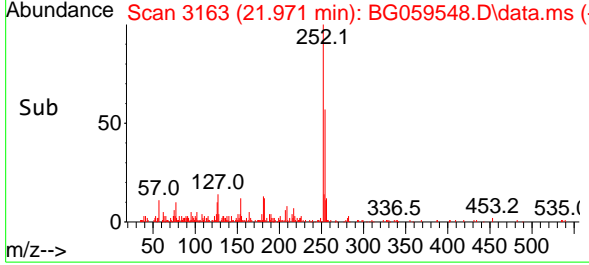
#84
 3,3'-Dichlorobenzidine
 Concen: 4.342 ng/ul
 RT: 21.971 min Scan# 3163
 Delta R.T. 0.002 min
 Lab File: BG059548.D
 Acq: 30 Oct 2023 16:20

Instrument : BNA_G
 Client Sample Id : MDL-SOIL-QT4-2023-07

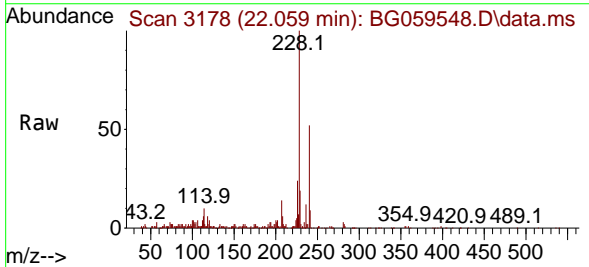


Tgt Ion: 252 Resp: 5296
 Ion Ratio Lower Upper
 252 100
 254 57.2 48.9 73.3
 126 9.7 11.5 17.3

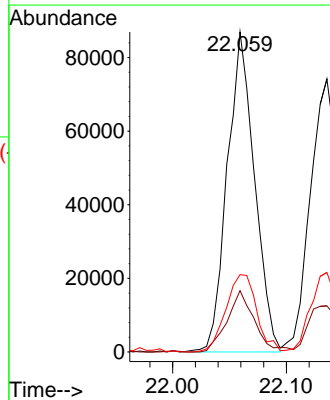
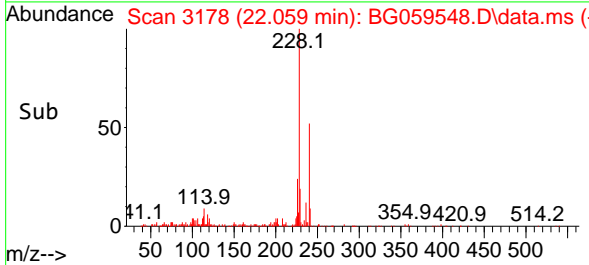
Manual Integrations
APPROVED
 Reviewed By :Yogesh Patel 11/01/2023
 Supervised By :mohammad ahmed 11/01/2023

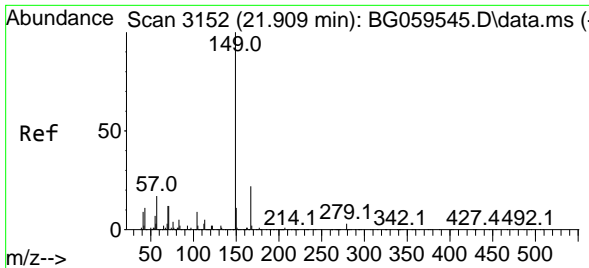


#85
 Benzo(a)anthracene
 Concen: 3.755 ng/ul
 RT: 22.059 min Scan# 3178
 Delta R.T. 0.002 min
 Lab File: BG059548.D
 Acq: 30 Oct 2023 16:20



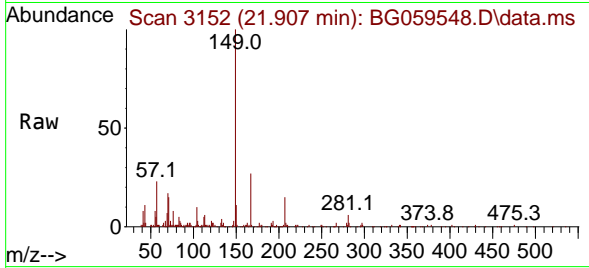
Tgt Ion: 228 Resp: 144951
 Ion Ratio Lower Upper
 228 100
 229 19.2 16.7 25.1
 226 24.2 20.3 30.5





#86
 Bis(2-ethylhexyl)phthalate
 Concen: 3.604 ng/ul
 RT: 21.907 min Scan# 3152
 Delta R.T. -0.009 min
 Lab File: BG059548.D
 Acq: 30 Oct 2023 16:20

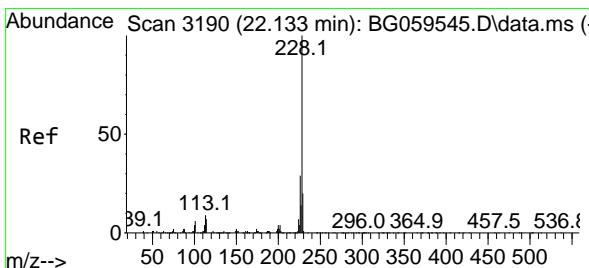
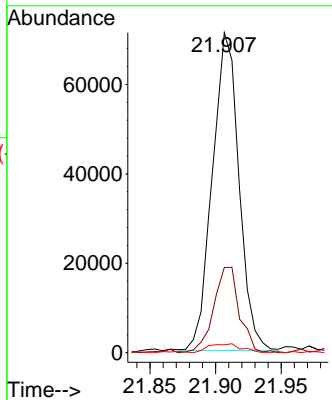
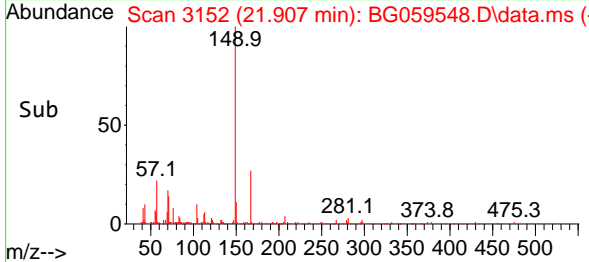
Instrument : BNA_G
 ClientSampleId : MDL-SOIL-QT4-2023-07



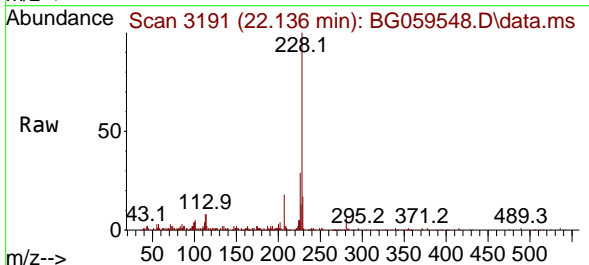
Tgt Ion:149 Resp: 10026
 Ion Ratio Lower Upper
 149 100
 167 26.6 19.4 29.2
 279 2.5 2.2 3.4

Manual Integrations
APPROVED

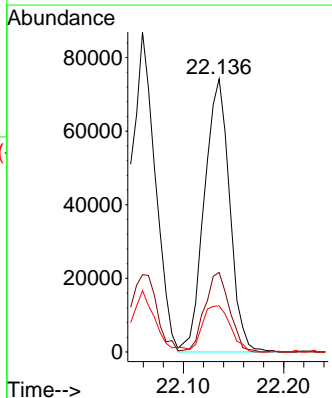
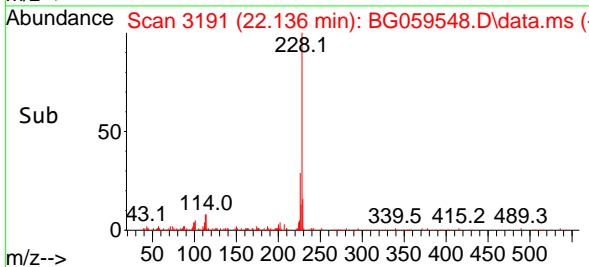
Reviewed By :Yogesh Patel 11/01/2023
 Supervised By :mohammad ahmed 11/01/2023

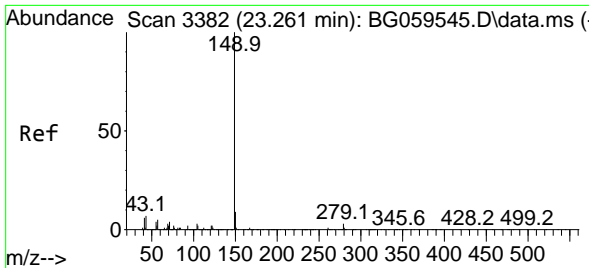


#87
 Chrysene
 Concen: 3.617 ng/ul
 RT: 22.136 min Scan# 3191
 Delta R.T. 0.002 min
 Lab File: BG059548.D
 Acq: 30 Oct 2023 16:20



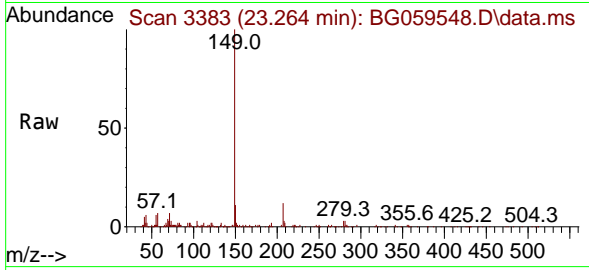
Tgt Ion:228 Resp: 129879
 Ion Ratio Lower Upper
 228 100
 226 29.1 21.0 31.4
 229 16.9 15.1 22.7





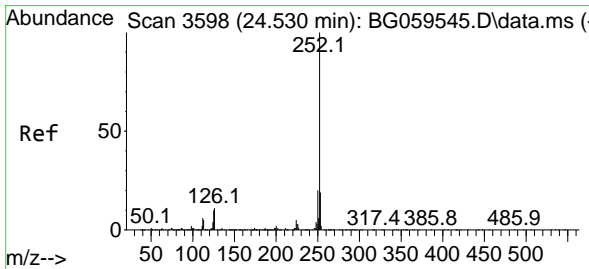
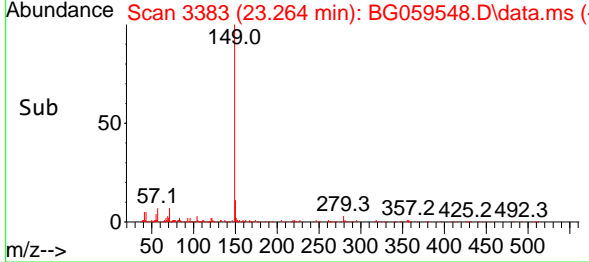
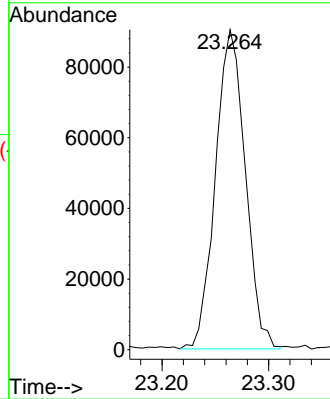
#89
 Di-n-octyl phthalate
 Concen: 4.051 ng/ul
 RT: 23.264 min Scan# 31
 Delta R.T. -0.009 min
 Lab File: BG059548.D
 Acq: 30 Oct 2023 16:20

Instrument : BNA_G
 ClientSampleId : MDL-SOIL-QT4-2023-07



Tgt Ion:149 Resp: 175948

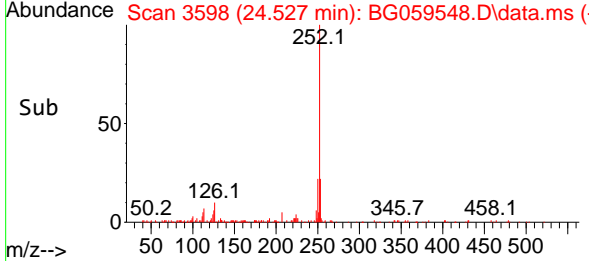
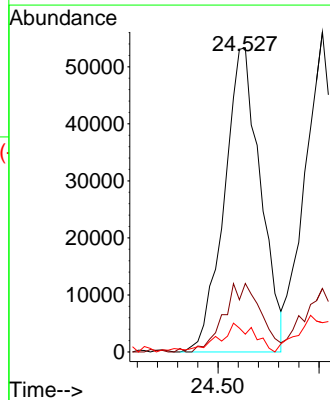
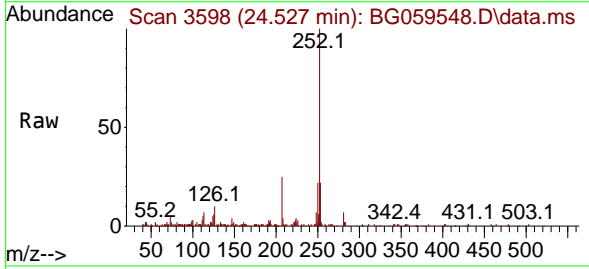
Manual Integrations
APPROVED
 Reviewed By :Yogesh Patel 11/01/2023
 Supervised By :mohammad ahmed 11/01/2023

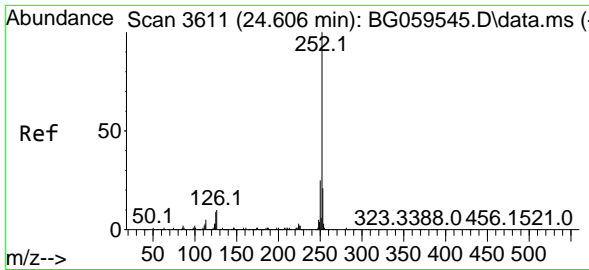


#90
 Benzo(b)fluoranthene
 Concen: 3.704 ng/ul m
 RT: 24.527 min Scan# 3598
 Delta R.T. 0.002 min
 Lab File: BG059548.D
 Acq: 30 Oct 2023 16:20

Tgt Ion:252 Resp: 133195

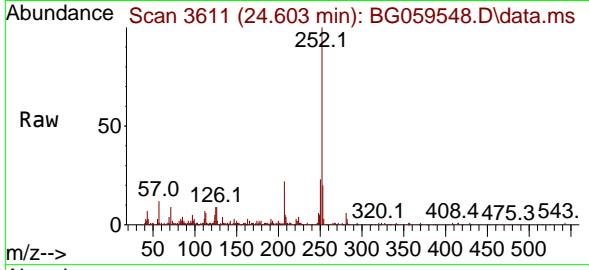
Ion	Ratio	Lower	Upper
252	100		
253	22.5	17.8	26.8
125	5.9	8.6	13.0





#91
 Benzo(k)fluoranthene
 Concen: 3.723 ng/u1
 RT: 24.603 min Scan# 30
 Delta R.T. 0.002 min
 Lab File: BG059548.D
 Acq: 30 Oct 2023 16:20

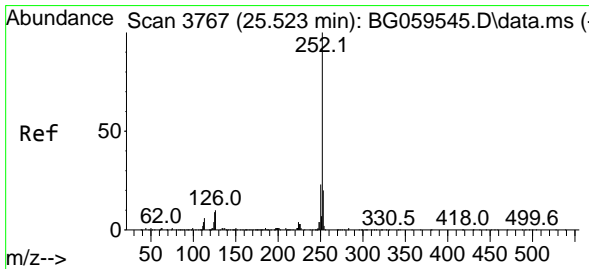
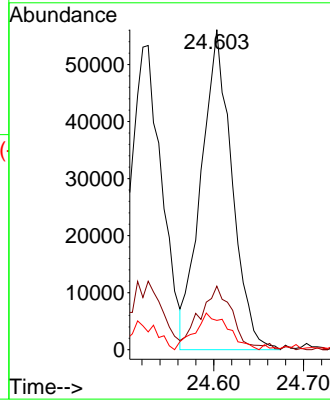
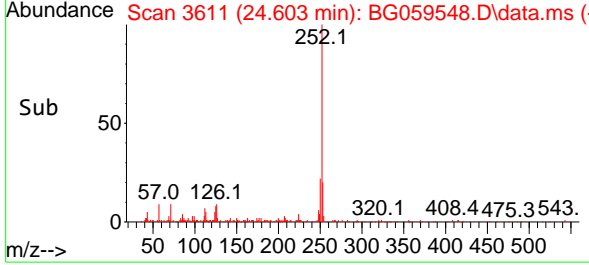
Instrument :
 BNA_G
 ClientSampleId :
 MDL-SOIL-QT4-2023-07



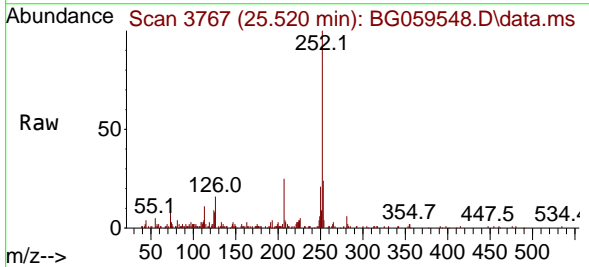
Tgt Ion:252 Resp: 13372
 Ion Ratio Lower Upper
 252 100
 253 19.9 17.9 26.9
 125 9.1 7.9 11.9

Manual Integrations
 APPROVED

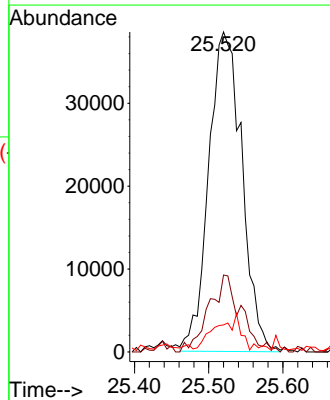
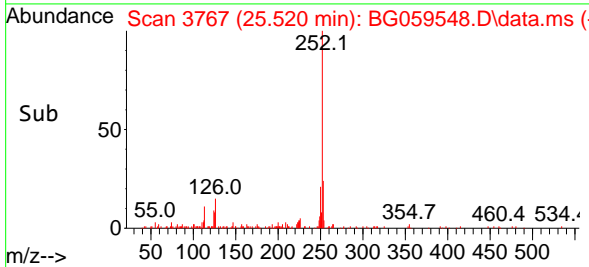
Reviewed By :Yogesh Patel 11/01/2023
 Supervised By :mohammad ahmed 11/01/2023

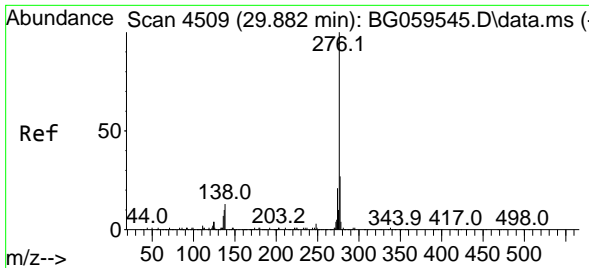


#93
 Benzo(a)pyrene
 Concen: 3.525 ng/u1
 RT: 25.520 min Scan# 3767
 Delta R.T. 0.002 min
 Lab File: BG059548.D
 Acq: 30 Oct 2023 16:20



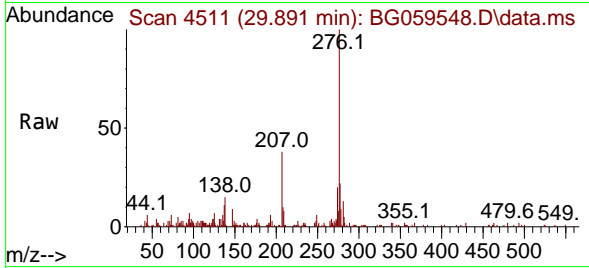
Tgt Ion:252 Resp: 119799
 Ion Ratio Lower Upper
 252 100
 253 24.1 18.5 27.7
 125 8.4 7.6 11.4





#94
 Indeno(1,2,3-cd)pyrene
 Concen: 3.744 ng/ul m
 RT: 29.891 min Scan# 4511
 Delta R.T. 0.002 min
 Lab File: BG059548.D
 Acq: 30 Oct 2023 16:20

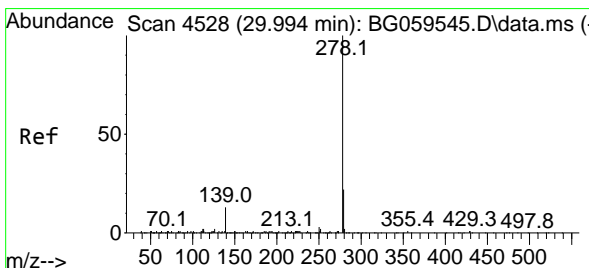
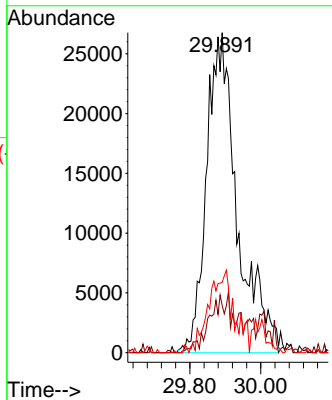
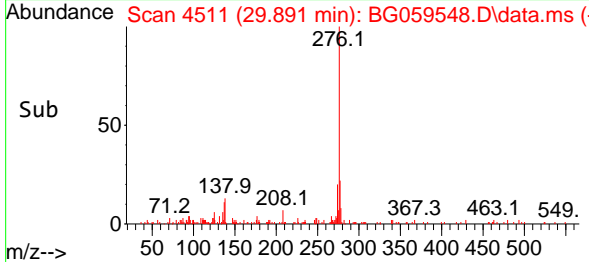
Instrument : BNA_G
 ClientSampleId : MDL-SOIL-QT4-2023-07



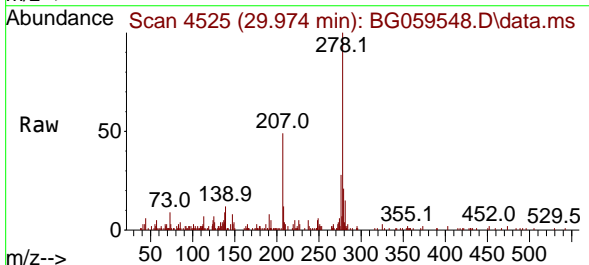
Tgt Ion:276 Resp: 161270
 Ion Ratio Lower Upper
 276 100
 138 14.8 15.3 22.9
 277 22.0 16.4 24.6

Manual Integrations
 APPROVED

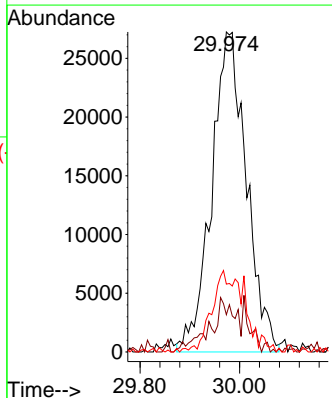
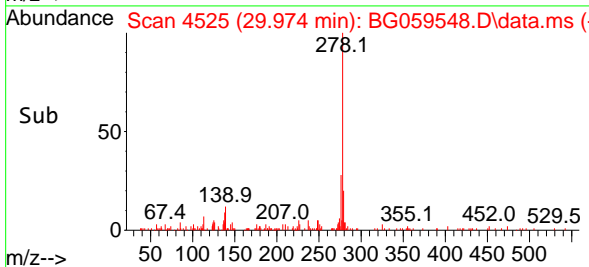
Reviewed By :Yogesh Patel 11/01/2023
 Supervised By :mohammad ahmed 11/01/2023

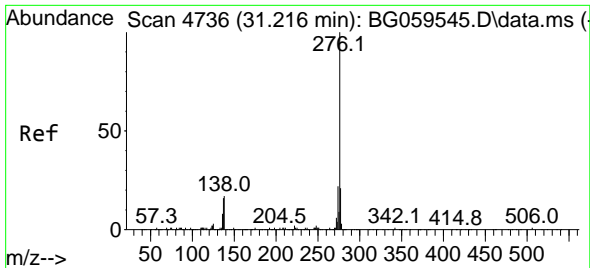


#95
 Dibenzo(a,h)anthracene
 Concen: 3.710 ng/ul m
 RT: 29.974 min Scan# 4525
 Delta R.T. -0.009 min
 Lab File: BG059548.D
 Acq: 30 Oct 2023 16:20



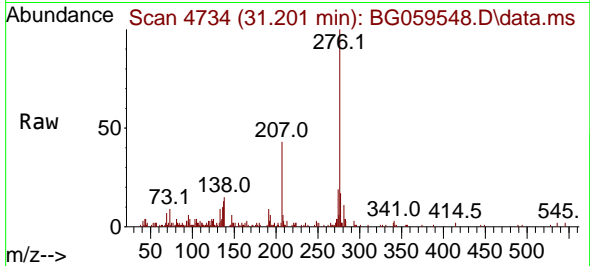
Tgt Ion:278 Resp: 131996
 Ion Ratio Lower Upper
 278 100
 139 11.7 11.0 16.6
 279 21.2 18.3 27.5





#96
 Benzo(g,h,i)perylene
 Concen: 3.571 ng/ul m
 RT: 31.201 min Scan# 4
 Delta R.T. -0.015 min
 Lab File: BG059548.D
 Acq: 30 Oct 2023 16:20

Instrument :
 BNA_G
 ClientSampleId :
 MDL-SOIL-QT4-2023-07



Tgt Ion:276 Resp: 125920
 Ion Ratio Lower Upper
 276 100
 138 14.8 16.2 24.2
 277 17.4 18.2 27.4

Manual Integrations
 APPROVED

Reviewed By :Yogesh Patel 11/01/2023
 Supervised By :mohammad ahmed 11/01/2023

