

Data Path : Z:\svoasrv\HPCHEM1\BNA\_G\Data\BG110223\  
 Data File : BG059604.D  
 Acq On : 2 Nov 2023 18:03  
 Operator : MA/JU  
 Sample : SSTDCCC020EC  
 Misc :  
 ALS Vial : 2 Sample Multiplier: 1

Instrument :  
 BNA\_G  
 ClientSampleId :  
 SSTD020471

Quant Time: Nov 03 02:46:07 2023  
 Quant Method : Z:\svoasrv\HPCHEM1\BNA\_G\Methods\SFAM-EPA-BG102723.MA.M  
 Quant Title : SVOA CALIBRATION  
 QLast Update : Sat Oct 28 03:56:42 2023  
 Response via : Initial Calibration

Compound	R.T.	QIon	Response	Conc	Units	Dev(Min)
Internal Standards						
1) 1,4-Dichlorobenzene-d4	8.355	152	81009	20.000	ng/ul	0.00
20) Naphthalene-d8	11.205	136	517466	20.000	ng/ul	0.00
38) Acenaphthene-d10	14.983	164	321649	20.000	ng/ul	0.00
64) Phenanthrene-d10	17.733	188	497239	20.000	ng/ul	-0.01
79) Chrysene-d12	22.069	240	395787	20.000	ng/ul	#-0.01
88) Perylene-d12	25.676	264	488733	20.000	ng/ul	-0.02
System Monitoring Compounds						
3) 1,4-Dioxane-d8	3.649	96	14635	6.759	ng/uL	0.00
4) Pyridine-d5	4.084	84	103720	17.143	ng/ul	0.00
7) Phenol-d5	7.468	99	149252	17.929	ng/ul	0.00
9) Bis-(2-Chloroethyl)eth...	7.668	67	60343	15.782	ng/ul	-0.01
11) 2-Chlorophenol-d4	7.868	132	118957	17.614	ng/ul	0.00
15) 4-Methylphenol-d8	9.037	113	171648	25.990	ng/ul	0.00
21) Nitrobenzene-d5	9.554	128	87294	23.725	ng/ul	0.00
24) 2-Nitrophenol-d4	10.277	143	93459	24.743	ng/ul	-0.01
28) 2,4-Dichlorophenol-d3	10.799	165	173810	20.886	ng/ul	0.00
31) 4-Chloroaniline-d4	11.346	131	262722	19.178	ng/ul	0.00
46) Dimethylphthalate-d6	14.378	166	519243	17.819	ng/ul	-0.01
49) Acenaphthylene-d8	14.683	160	637817	18.651	ng/ul	-0.01
54) 4-Nitrophenol-d4	15.153	143	103519	20.715	ng/ul	0.00
60) Fluorene-d10	15.970	176	330355	13.265	ng/ul	-0.01
65) 4,6-Dinitro-2-methylph...	16.070	200	57631	24.474	ng/ul	-0.01
73) Anthracene-d10	17.832	188	510488	18.950	ng/ul	-0.01
81) Pyrene-d10	20.100	212	511881	18.607	ng/ul	-0.01
92) Benzo(a)pyrene-d12	25.418	264	531693	18.475	ng/ul	-0.02
Target Compounds						
2) 1,4-Dioxane	3.690	88	14342	5.918	ng/uL	95
5) Pyridine	4.107	79	97263	16.297	ng/ul#	80
6) Benzaldehyde	7.497	77	78270	20.875	ng/ul	95
8) Phenol	7.492	94	141793	18.068	ng/ul	96
10) Bis(2-Chloroethyl)ether	7.768	93	96736	16.809	ng/ul	92
12) 2-Chlorophenol	7.903	128	120456	17.991	ng/ul	95
13) 2-Methylphenol	8.772	108	121294	18.540	ng/ul	90
14) 2,2'-oxybis(1-Chloropr...	8.861	45	75068	13.861	ng/ul#	84
16) Acetophenone	9.195	105	262024	25.169	ng/ul	93
17) N-Nitroso-di-n-propyla...	9.160	70	104832	21.371	ng/ul#	93
18) 4-Methylphenol	9.101	108	177863	25.551	ng/ul	91
19) Hexachloroethane	9.442	117	68237	25.661	ng/ul	94
22) Nitrobenzene	9.595	77	179629	22.619	ng/ul#	87
23) Isophorone	10.106	82	338083	16.904	ng/ul#	92
25) 2-Nitrophenol	10.306	139	100962	24.853	ng/ul#	81
26) 2,4-Dimethylphenol	10.324	107	206333	19.310	ng/ul#	86
27) Bis(2-Chloroethoxy)met...	10.588	93	187967	16.879	ng/ul	99
29) 2,4-Dichlorophenol	10.829	162	167859	20.849	ng/ul#	88
30) Naphthalene	11.258	128	603100	18.699	ng/ul	98
32) 4-Chloroaniline	11.369	127	244471	18.787	ng/ul#	87
33) Hexachlorobutadiene	11.481	225	93433	19.344	ng/ul	94
34) Caprolactam	12.145	113	51878	17.613	ng/ul	97
35) 4-Chloro-3-methylphenol	12.433	107	195139	20.313	ng/ul	98
36) 2-Methylnaphthalene	12.832	142	419023	18.885	ng/ul	100

Data Path : Z:\svoasrv\HPCHEM1\BNA\_G\Data\BG110223\  
 Data File : BG059604.D  
 Acq On : 2 Nov 2023 18:03  
 Operator : MA/JU  
 Sample : SSTDCCC020EC  
 Misc :  
 ALS Vial : 2 Sample Multiplier: 1

Instrument :  
 BNA\_G  
 ClientSampleId :  
 SSTD020471

Quant Time: Nov 03 02:46:07 2023  
 Quant Method : Z:\svoasrv\HPCHEM1\BNA\_G\Methods\SFAM-EPA-BG102723.MA.M  
 Quant Title : SVOA CALIBRATION  
 QLast Update : Sat Oct 28 03:56:42 2023  
 Response via : Initial Calibration

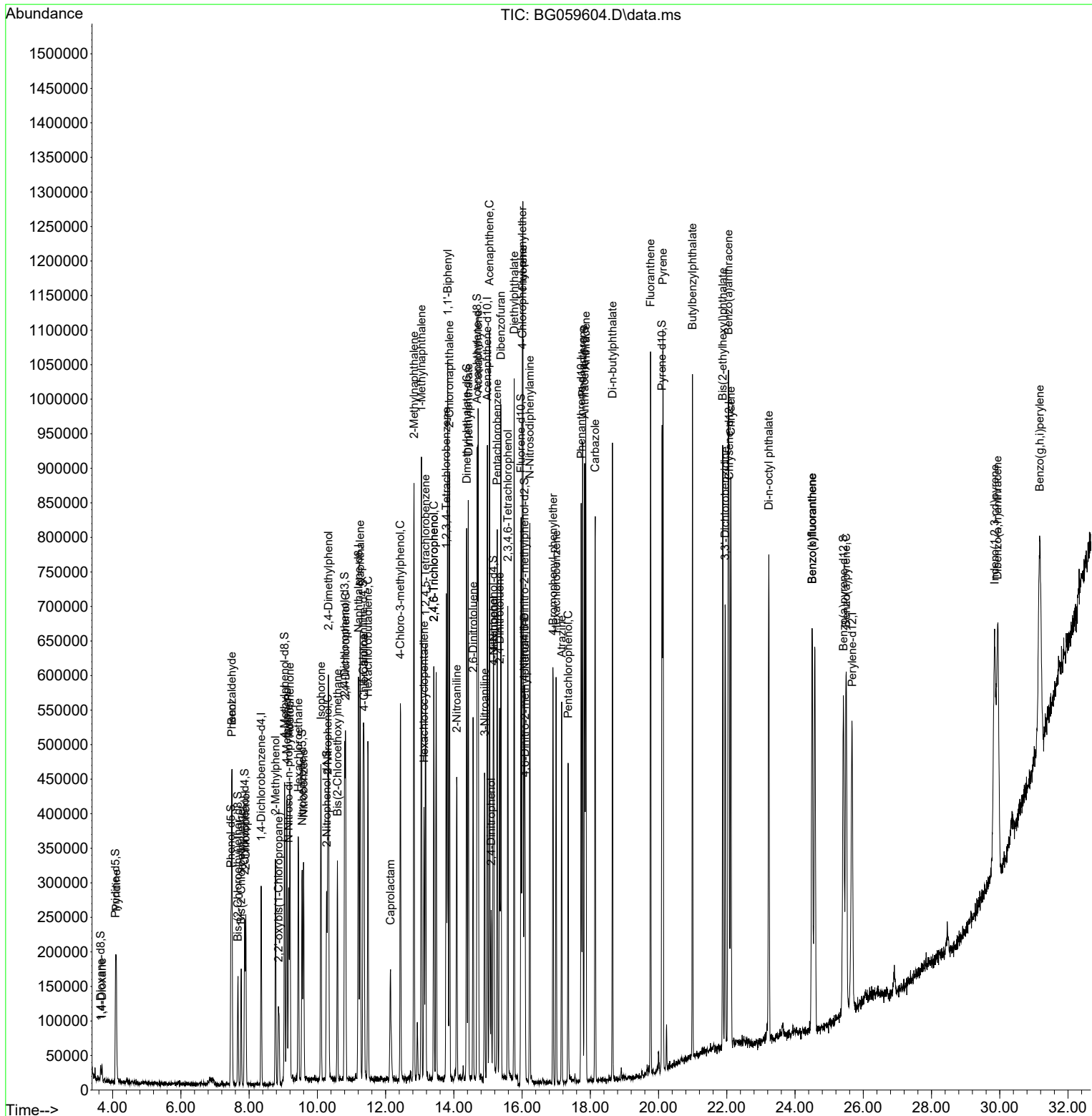
Compound	R.T.	QIon	Response	Conc	Units	Dev(Min)
37) 1-Methylnaphthalene	13.050	142	420551	19.029	ng/ul	95
39) 1,2,4,5-Tetrachloroben...	13.167	216	186048	20.054	ng/ul	90
40) Hexachlorocyclopentadiene	13.126	237	92967	17.191	ng/ul#	81
41) 2,4,6-Trichlorophenol	13.414	196	131915	20.535	ng/ul	91
42) 2,4,5-Trichlorophenol	13.414	196	123262	17.723	ng/ul	97
43) 1,1'-Biphenyl	13.819	154	540752	18.584	ng/ul	96
44) 2-Chloronaphthalene	13.872	162	420899	18.611	ng/ul	97
45) 2-Nitroaniline	14.084	65	113666	27.012	ng/ul	93
47) Dimethylphthalate	14.425	163	521405	18.110	ng/ul#	98
48) 2,6-Dinitrotoluene	14.566	165	108585	25.002	ng/ul#	78
50) Acenaphthylene	14.718	152	720492	18.285	ng/ul	96
51) 3-Nitroaniline	14.906	138	134735	24.889	ng/ul#	81
52) Acenaphthene	15.047	153	474952	18.492	ng/ul	97
53) 2,4-Dinitrophenol	15.094	184	58370	23.654	ng/ul#	71
55) 4-Nitrophenol	15.171	109	125997	22.879	ng/ul	90
56) Dibenzofuran	15.376	168	625379	18.781	ng/ul	95
57) 2,4-Dinitrotoluene	15.341	165	156835	25.673	ng/ul	99
58) 2,3,4,6-Tetrachlorophenol	15.582	232	123294	22.587	ng/ul#	88
59) Diethylphthalate	15.770	149	552609	17.596	ng/ul	98
61) Fluorene	16.023	166	469017	16.316	ng/ul	99
62) 4-Chlorophenyl-phenyle...	16.005	204	213078	17.344	ng/ul	93
63) 4-Nitroaniline	16.064	138	91531	15.932	ng/ul#	84
66) 4,6-Dinitro-2-methylph...	16.087	198	61335	24.715	ng/ul#	73
67) N-Nitrosodiphenylamine	16.228	169	325150	19.137	ng/ul	98
68) 4-Bromophenyl-phenylether	16.910	248	106158	21.335	ng/ul	90
69) Hexachlorobenzene	16.998	284	110792	19.266	ng/ul	98
70) Atrazine	17.163	200	107219	20.365	ng/ul#	92
71) Pentachlorophenol	17.351	266	68328	20.799	ng/ul	92
72) Phenanthrene	17.774	178	608332	18.819	ng/ul	97
74) Anthracene	17.868	178	607751	18.620	ng/ul	98
75) 1,2,3,4-Tetrachloroben...	13.778	216	185319	27.987	ng/uL	94
76) Pentachlorobenzene	15.271	250	175666	27.957	ng/uL	95
77) Carbazole	18.144	167	557130	19.870	ng/ul	98
78) Di-n-butylphthalate	18.649	149	693516	18.002	ng/ul	100
80) Fluoranthene	19.765	202	633663	18.896	ng/ul	99
82) Pyrene	20.130	202	656777	18.855	ng/ul	96
83) Butylbenzylphthalate	20.993	149	298672	18.986	ng/ul	95
84) 3,3'-Dichlorobenzidine	21.951	252	224308	21.794	ng/ul#	92
85) Benzo(a)anthracene	22.045	228	609536	18.714	ng/ul	97
86) Bis(2-ethylhexyl)phtha...	21.881	149	437798	18.651	ng/ul	99
87) Chrysene	22.122	228	565233	18.656	ng/ul	96
89) Di-n-octyl phthalate	23.232	149	749821	17.523	ng/ul	100
90) Benzo(b)fluoranthene	24.501	252	592371	16.721	ng/ul#	98
91) Benzo(k)fluoranthene	24.501	252	592371	16.740	ng/ul	99
93) Benzo(a)pyrene	25.500	252	611490	18.262	ng/ul	97
94) Indeno(1,2,3-cd)pyrene	29.848	276	710946	16.752	ng/ul#	92
95) Dibenzo(a,h)anthracene	29.936	278	664439	18.956	ng/ul#	94
96) Benzo(g,h,i)perylene	31.170	276	638756	18.389	ng/ul	96

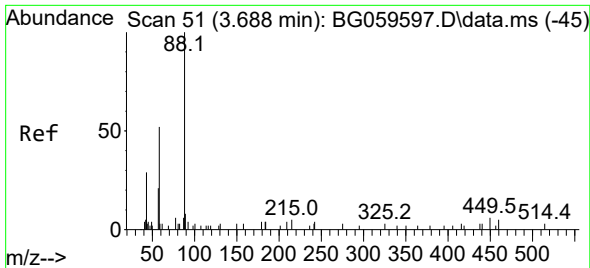
(#) = qualifier out of range (m) = manual integration (+) = signals summed

Data Path : Z:\svoasrv\HPCHEM1\BNA\_G\Data\BG110223\  
 Data File : BG059604.D  
 Acq On : 2 Nov 2023 18:03  
 Operator : MA/JU  
 Sample : SSTDCCC020EC  
 Misc :  
 ALS Vial : 2 Sample Multiplier: 1

**Instrument :**  
 BNA\_G  
**ClientSampleId :**  
 SSTD020471

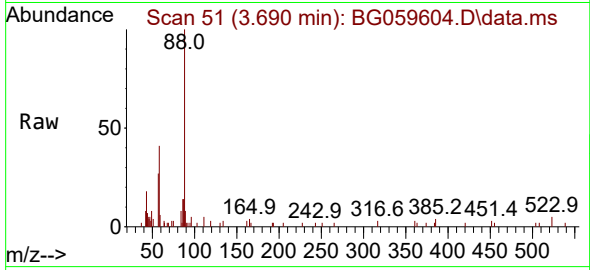
Quant Time: Nov 03 02:46:07 2023  
 Quant Method : Z:\svoasrv\HPCHEM1\BNA\_G\Methods\SFAM-EPA-BG102723.MA.M  
 Quant Title : SVOA CALIBRATION  
 QLast Update : Sat Oct 28 03:56:42 2023  
 Response via : Initial Calibration



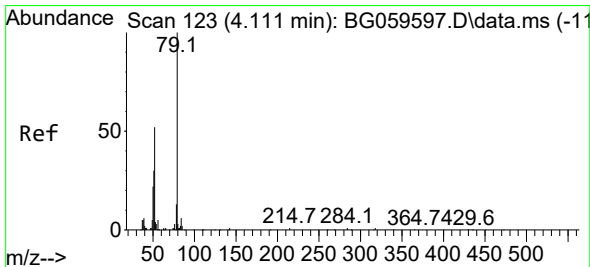
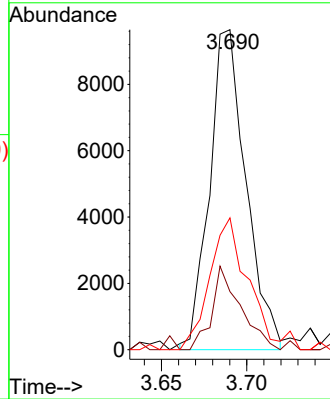
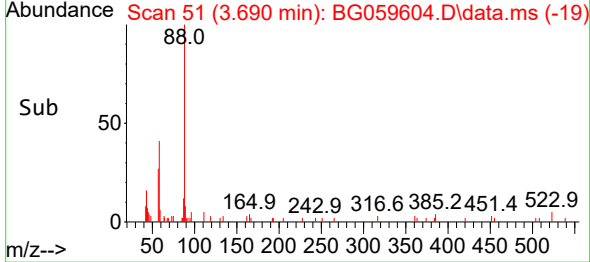


#2  
 1,4-Dioxane  
 Concen: 5.918 ng/uL  
 RT: 3.690 min Scan# 51  
 Delta R.T. -0.012 min  
 Lab File: BG059604.D  
 Acq: 2 Nov 2023 18:03

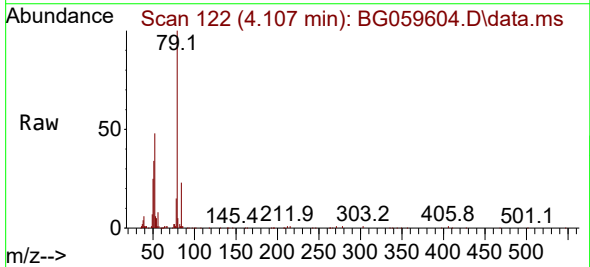
Instrument :  
 BNA\_G  
 ClientSampleId :  
 SSTD020471



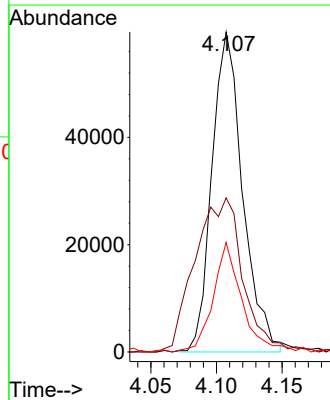
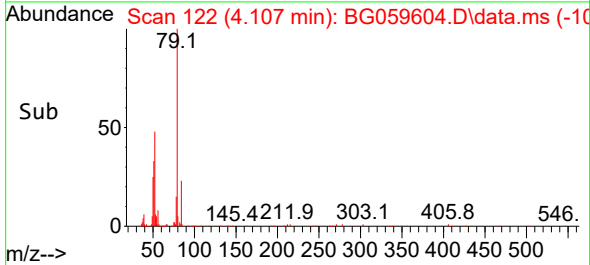
Tgt Ion: 88 Resp: 14342  
 Ion Ratio Lower Upper  
 88 100  
 43 18.2 15.7 23.5  
 58 41.2 36.2 54.2

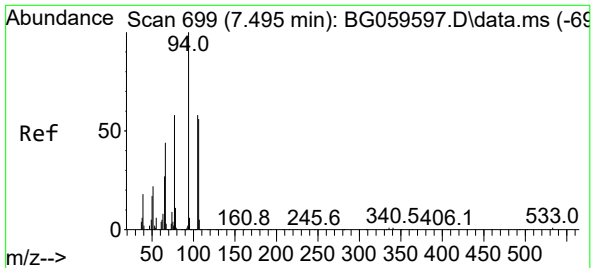


#5  
 Pyridine  
 Concen: 16.297 ng/uL  
 RT: 4.107 min Scan# 122  
 Delta R.T. -0.006 min  
 Lab File: BG059604.D  
 Acq: 2 Nov 2023 18:03



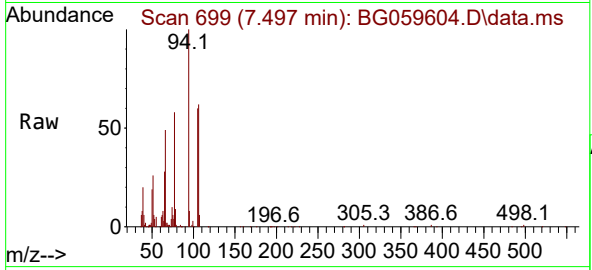
Tgt Ion: 79 Resp: 97263  
 Ion Ratio Lower Upper  
 79 100  
 52 48.2 53.3 79.9#  
 51 34.2 22.4 33.6#



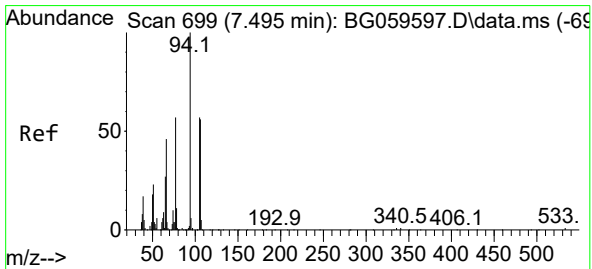
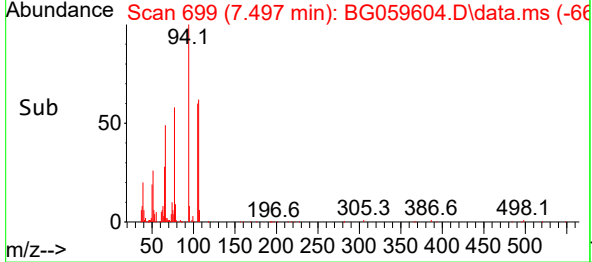
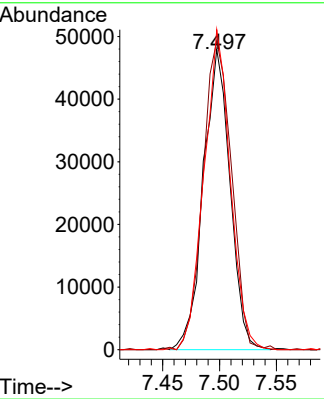


#6  
Benzaldehyde  
Concen: 20.875 ng/ul  
RT: 7.497 min Scan# 699  
Delta R.T. -0.006 min  
Lab File: BG059604.D  
Acq: 2 Nov 2023 18:03

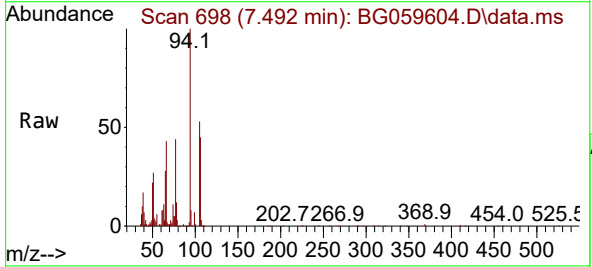
Instrument :  
BNA\_G  
ClientSampleId :  
SSTD020471



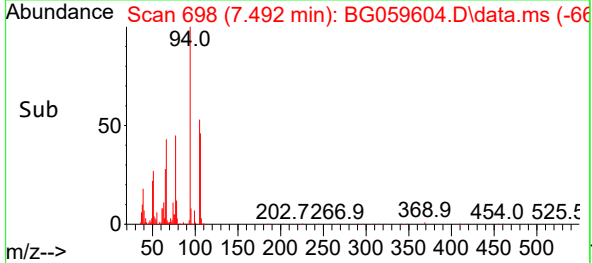
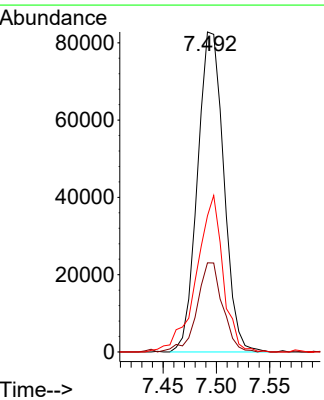
Tgt Ion: 77 Resp: 78270  
Ion Ratio Lower Upper  
77 100  
105 102.9 83.6 125.4  
106 106.5 78.6 118.0

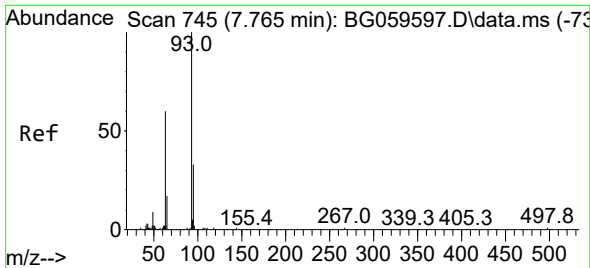


#8  
Phenol  
Concen: 18.068 ng/ul  
RT: 7.492 min Scan# 698  
Delta R.T. -0.006 min  
Lab File: BG059604.D  
Acq: 2 Nov 2023 18:03



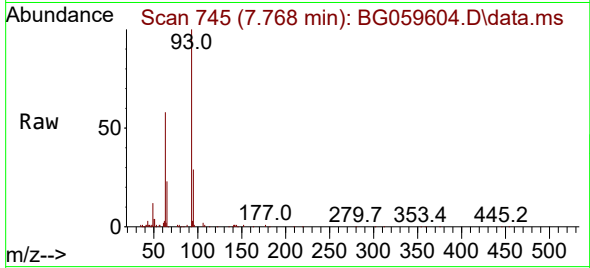
Tgt Ion: 94 Resp: 141793  
Ion Ratio Lower Upper  
94 100  
65 27.9 22.5 33.7  
66 42.6 31.1 46.7





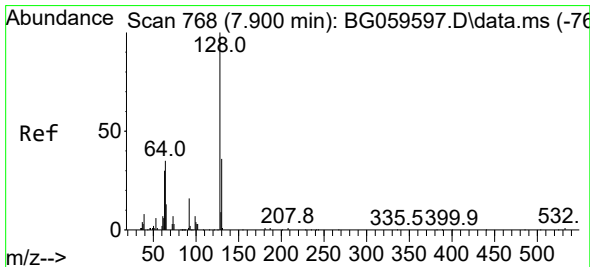
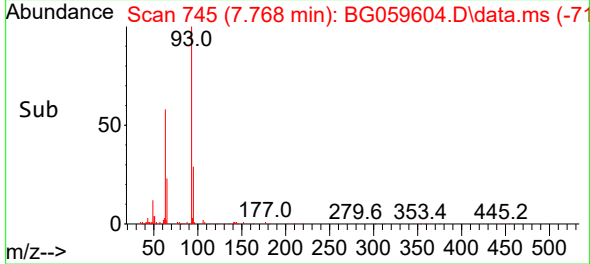
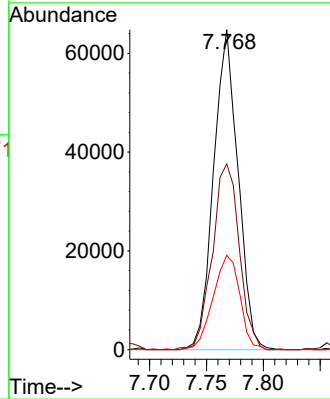
#10  
 Bis(2-Chloroethyl)ether  
 Concen: 16.809 ng/ul  
 RT: 7.768 min Scan# 745  
 Delta R.T. -0.012 min  
 Lab File: BG059604.D  
 Acq: 2 Nov 2023 18:03

Instrument :  
 BNA\_G  
 ClientSampleId :  
 SSTD020471



Tgt Ion: 93 Resp: 96736

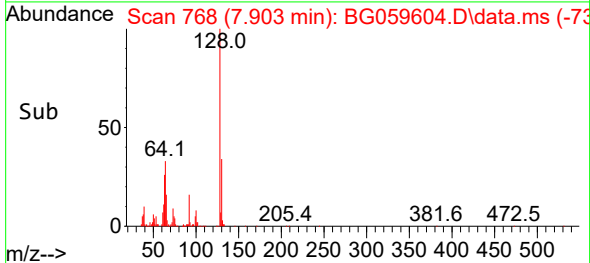
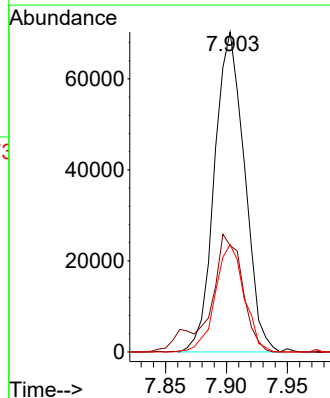
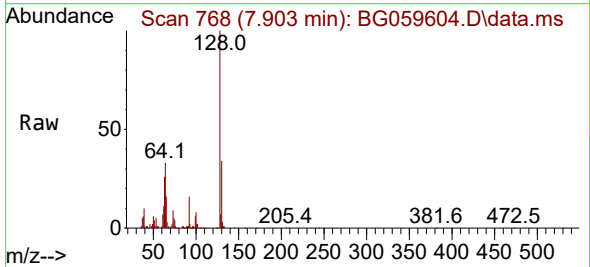
Ion	Ratio	Lower	Upper
93	100		
63	58.1	52.5	78.7
95	29.5	26.5	39.7

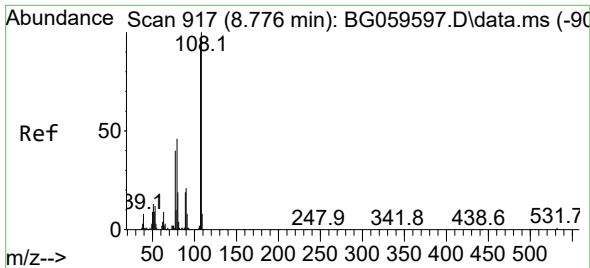


#12  
 2-Chlorophenol  
 Concen: 17.991 ng/ul  
 RT: 7.903 min Scan# 768  
 Delta R.T. -0.012 min  
 Lab File: BG059604.D  
 Acq: 2 Nov 2023 18:03

Tgt Ion: 128 Resp: 120456

Ion	Ratio	Lower	Upper
128	100		
64	33.3	30.2	45.2
130	33.5	27.9	41.9

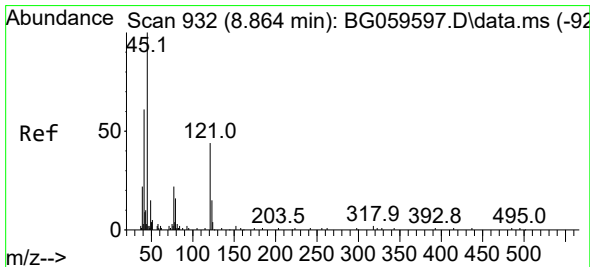
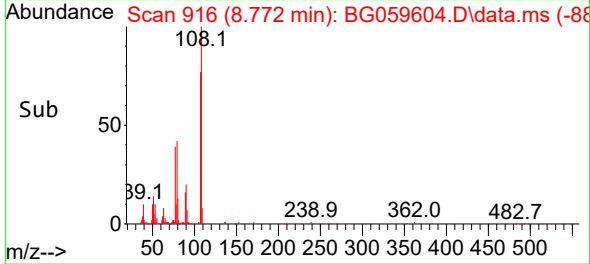
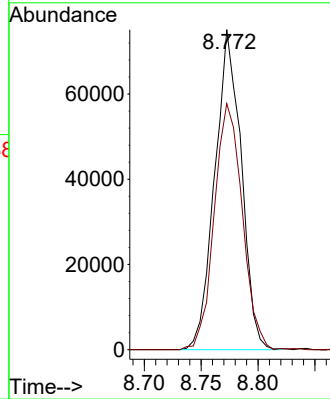
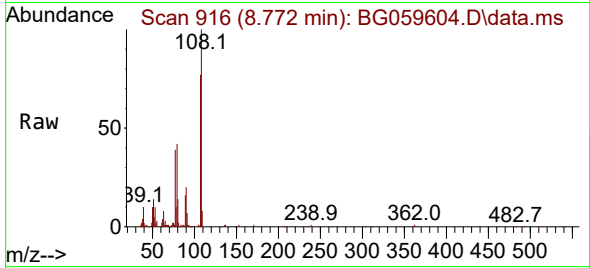




#13  
 2-Methylphenol  
 Concen: 18.540 ng/ul  
 RT: 8.772 min Scan# 917  
 Delta R.T. -0.006 min  
 Lab File: BG059604.D  
 Acq: 2 Nov 2023 18:03

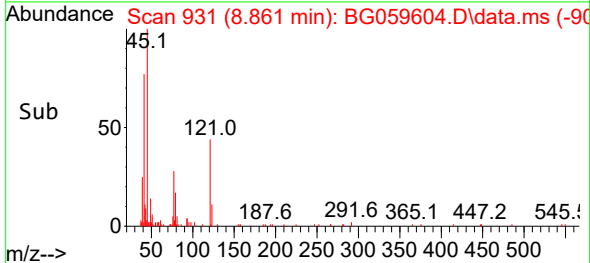
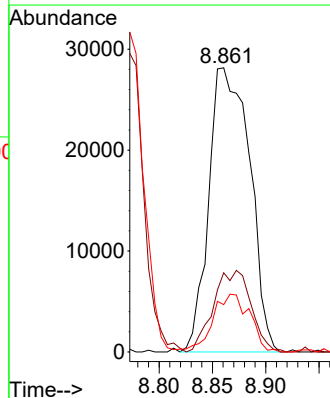
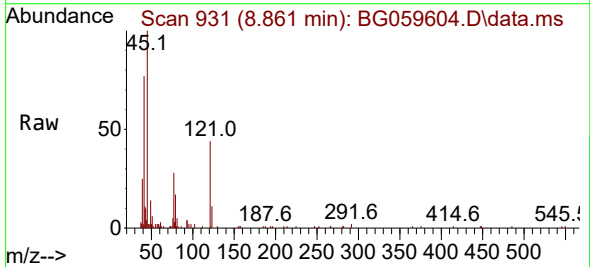
Instrument :  
 BNA\_G  
 ClientSampleId :  
 SSTD020471

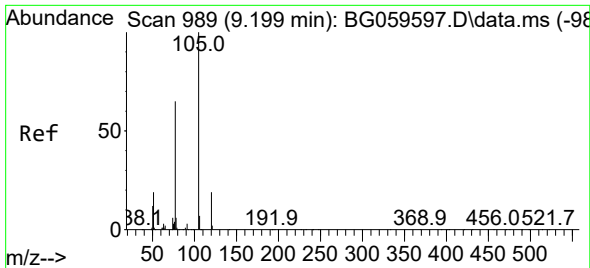
Tgt Ion:108 Resp: 121294  
 Ion Ratio Lower Upper  
 108 100  
 107 76.9 68.6 102.8



#14  
 2,2'-oxybis(1-Chloropropane)  
 Concen: 13.861 ng/ul  
 RT: 8.861 min Scan# 931  
 Delta R.T. -0.018 min  
 Lab File: BG059604.D  
 Acq: 2 Nov 2023 18:03

Tgt Ion: 45 Resp: 75068  
 Ion Ratio Lower Upper  
 45 100  
 77 27.9 15.0 22.6#  
 79 16.7 10.0 15.0#



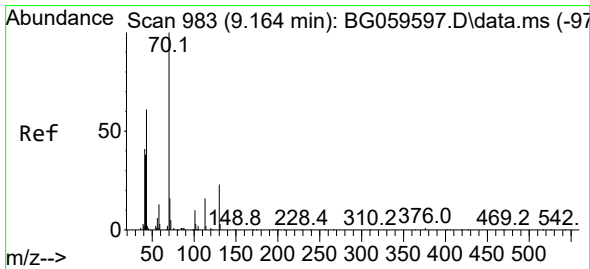
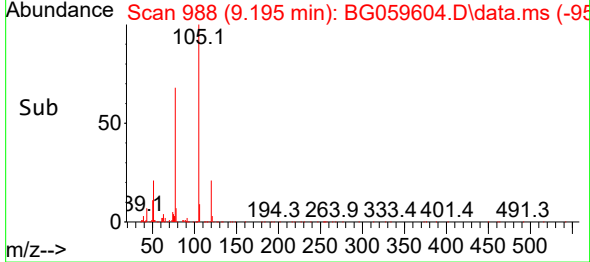
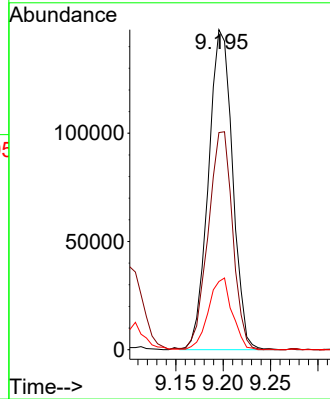
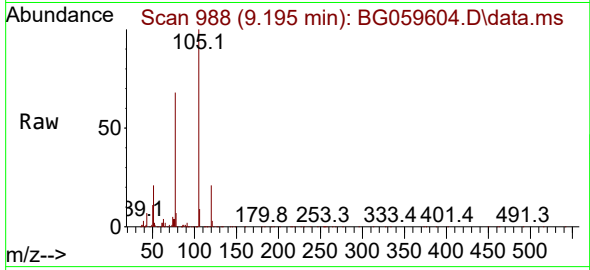


#16  
 Acetophenone  
 Concen: 25.169 ng/ul  
 RT: 9.195 min Scan# 911  
 Delta R.T. -0.012 min  
 Lab File: BG059604.D  
 Acq: 2 Nov 2023 18:03

Instrument :  
 BNA\_G  
 ClientSampleId :  
 SSTD020471

Tgt Ion:105 Resp: 262024

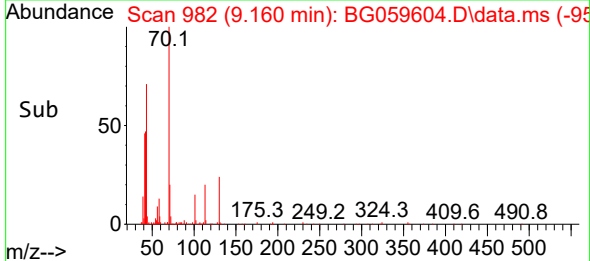
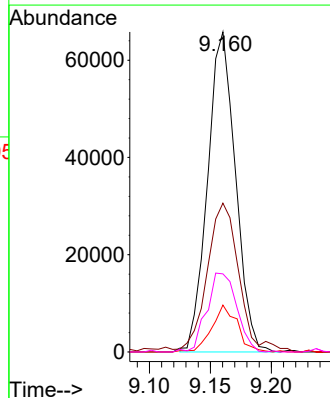
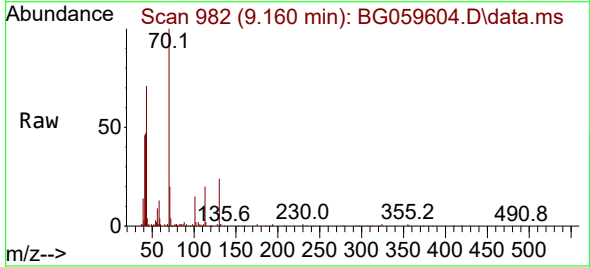
Ion	Ratio	Lower	Upper
105	100		
77	67.9	59.6	89.4
51	21.3	16.2	24.4



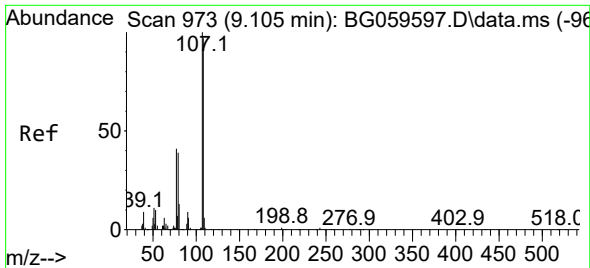
#17  
 N-Nitroso-di-n-propylamine  
 Concen: 21.371 ng/ul  
 RT: 9.160 min Scan# 982  
 Delta R.T. -0.012 min  
 Lab File: BG059604.D  
 Acq: 2 Nov 2023 18:03

Tgt Ion: 70 Resp: 104832

Ion	Ratio	Lower	Upper
70	100		
42	46.5	33.8	50.8
101	14.6	5.4	8.0
130	24.4	18.2	27.4

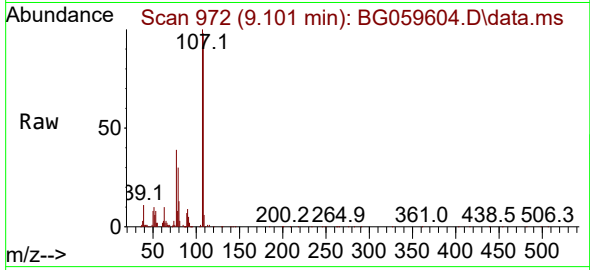




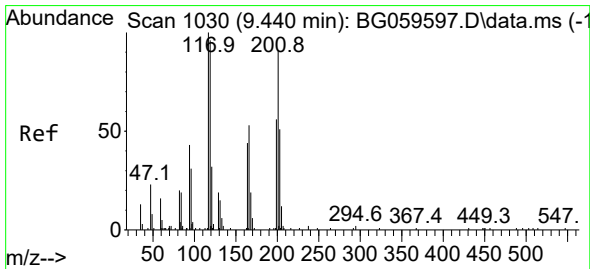
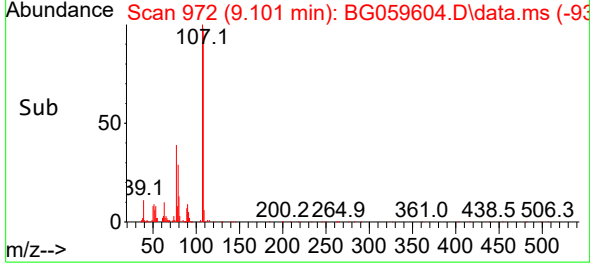
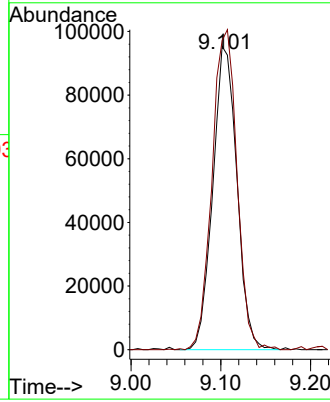


#18  
 4-Methylphenol  
 Concen: 25.551 ng/uI  
 RT: 9.101 min Scan# 91  
 Delta R.T. -0.006 min  
 Lab File: BG059604.D  
 Acq: 2 Nov 2023 18:03

Instrument :  
 BNA\_G  
 ClientSampleId :  
 SSTD020471

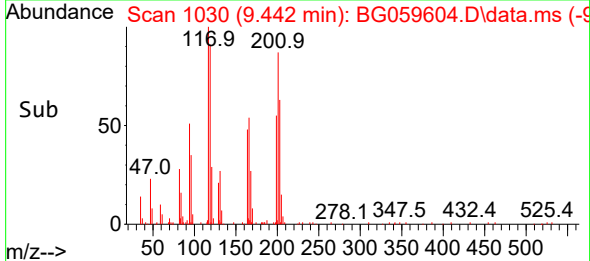
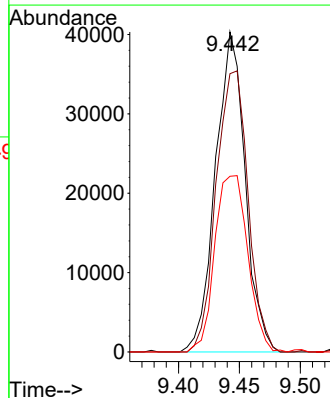
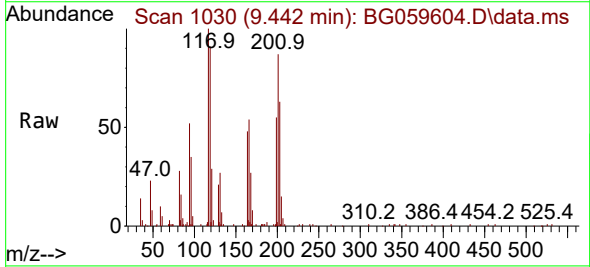


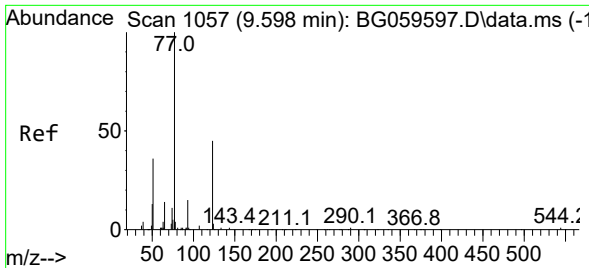
Tgt Ion:108 Resp: 177863  
 Ion Ratio Lower Upper  
 108 100  
 107 101.9 88.9 133.3



#19  
 Hexachloroethane  
 Concen: 25.661 ng/uI  
 RT: 9.442 min Scan# 1030  
 Delta R.T. -0.012 min  
 Lab File: BG059604.D  
 Acq: 2 Nov 2023 18:03

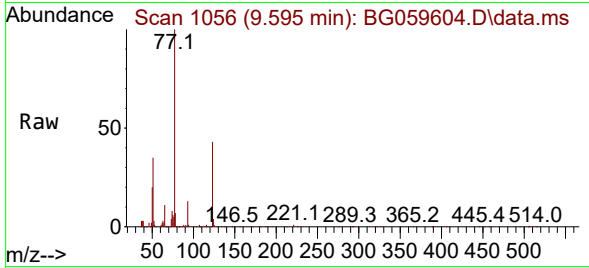
Tgt Ion:117 Resp: 68237  
 Ion Ratio Lower Upper  
 117 100  
 201 86.9 75.8 113.6  
 199 54.9 42.3 63.5



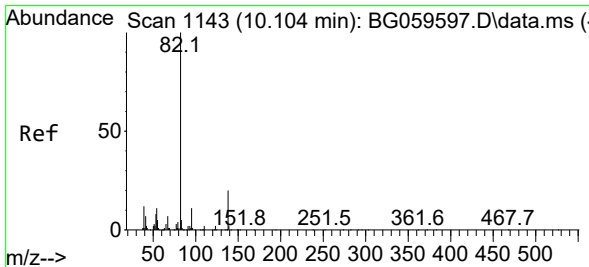
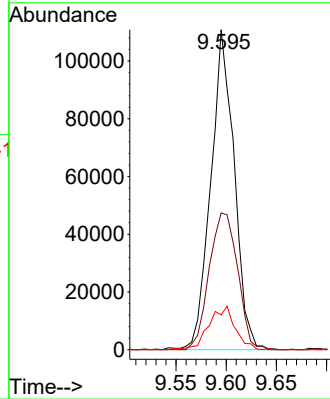
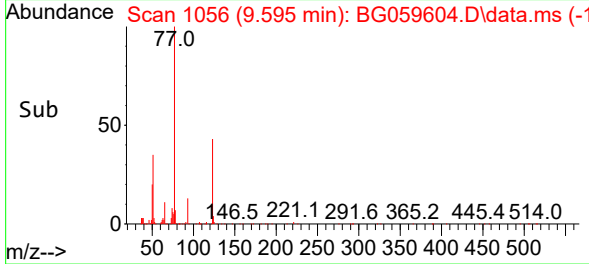


#22  
 Nitrobenzene  
 Concen: 22.619 ng/uI  
 RT: 9.595 min Scan# 1056  
 Delta R.T. -0.012 min  
 Lab File: BG059604.D  
 Acq: 2 Nov 2023 18:03

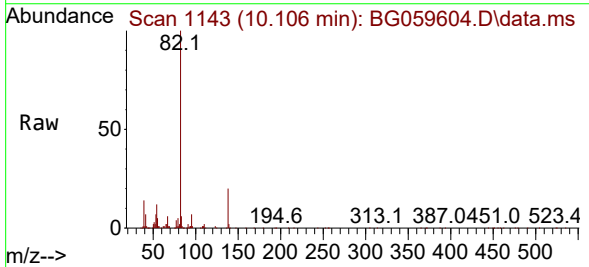
Instrument :  
 BNA\_G  
 ClientSampleId :  
 SSTD020471



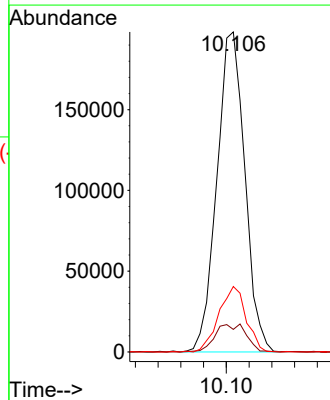
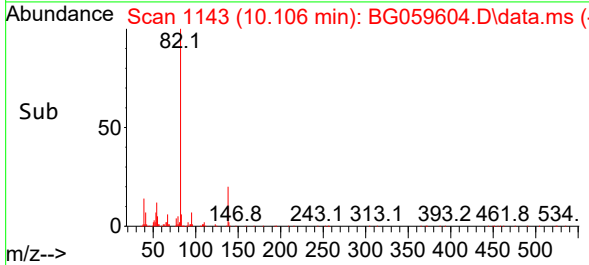
Tgt Ion: 77 Resp: 179629  
 Ion Ratio Lower Upper  
 77 100  
 123 42.7 42.6 63.8  
 65 10.8 11.0 16.4#

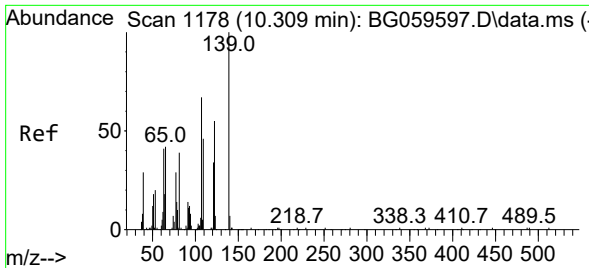


#23  
 Isophorone  
 Concen: 16.904 ng/uI  
 RT: 10.106 min Scan# 1143  
 Delta R.T. -0.006 min  
 Lab File: BG059604.D  
 Acq: 2 Nov 2023 18:03



Tgt Ion: 82 Resp: 338083  
 Ion Ratio Lower Upper  
 82 100  
 95 7.0 5.6 8.4  
 138 20.4 12.3 18.5#

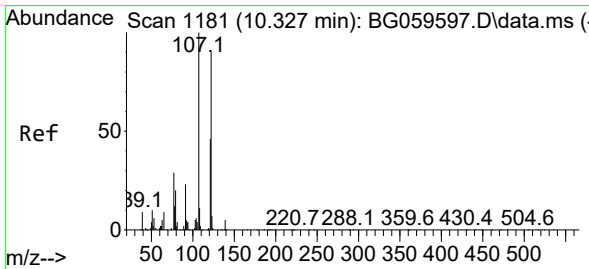
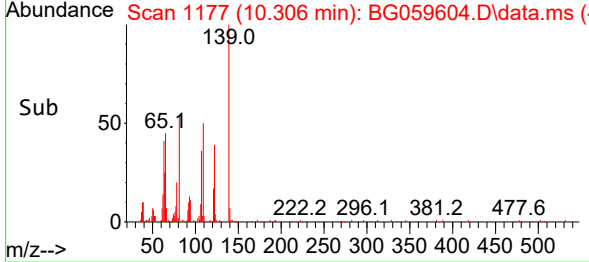
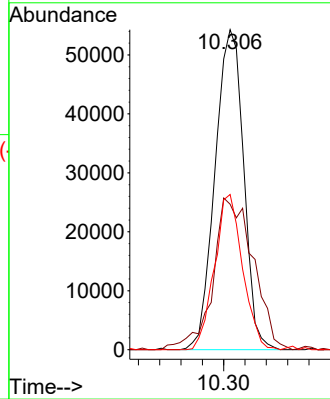
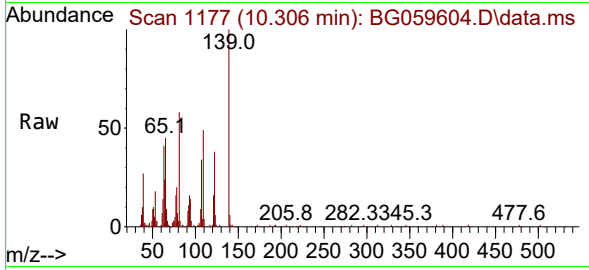




#25  
 2-Nitrophenol  
 Concen: 24.853 ng/ul  
 RT: 10.306 min Scan# 1177  
 Delta R.T. -0.012 min  
 Lab File: BG059604.D  
 Acq: 2 Nov 2023 18:03

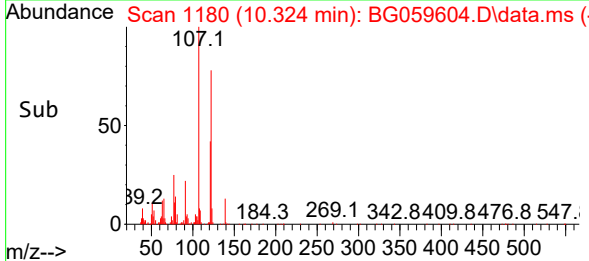
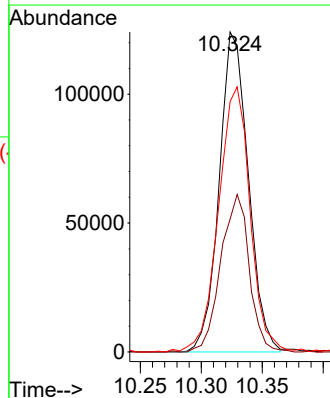
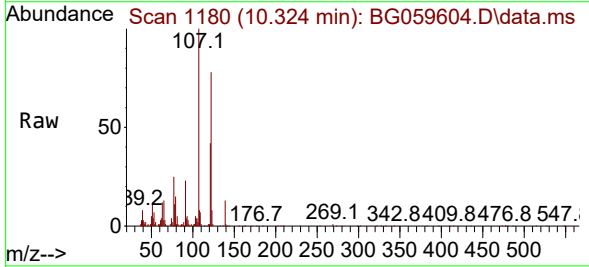
Instrument :  
 BNA\_G  
 ClientSampleId :  
 SSTD020471

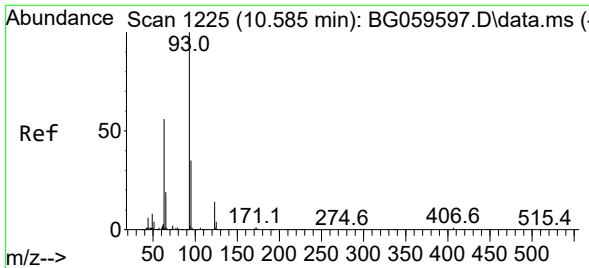
Tgt Ion:139 Resp: 100962  
 Ion Ratio Lower Upper  
 139 100  
 65 45.4 39.7 59.5  
 109 48.5 21.0 31.6#



#26  
 2,4-Dimethylphenol  
 Concen: 19.310 ng/ul  
 RT: 10.324 min Scan# 1180  
 Delta R.T. -0.012 min  
 Lab File: BG059604.D  
 Acq: 2 Nov 2023 18:03

Tgt Ion:107 Resp: 206333  
 Ion Ratio Lower Upper  
 107 100  
 121 41.6 42.7 64.1#  
 122 78.2 72.6 108.8



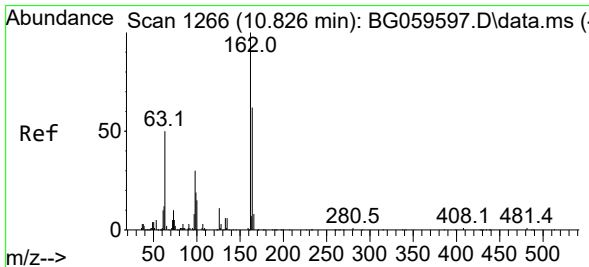
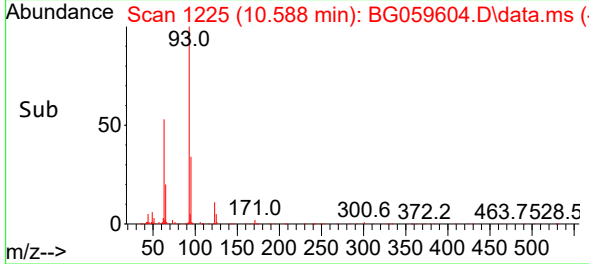
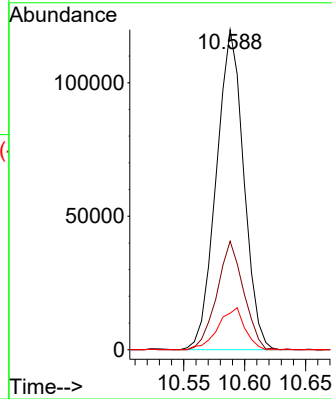
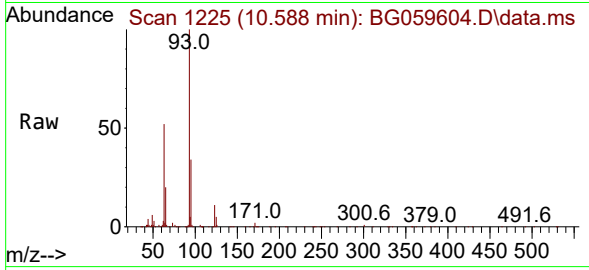


#27  
 Bis(2-Chloroethoxy)methane  
 Concen: 16.879 ng/ul  
 RT: 10.588 min Scan# 11  
 Delta R.T. -0.012 min  
 Lab File: BG059604.D  
 Acq: 2 Nov 2023 18:03

Instrument :  
 BNA\_G  
 ClientSampleId :  
 SSTD020471

Tgt Ion: 93 Resp: 187967

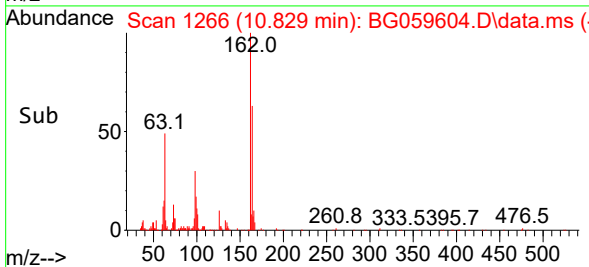
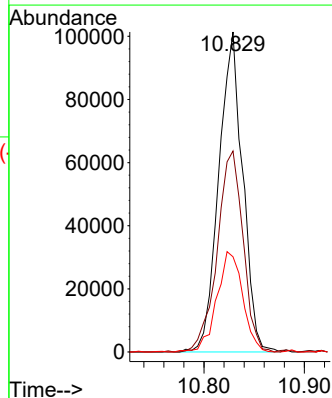
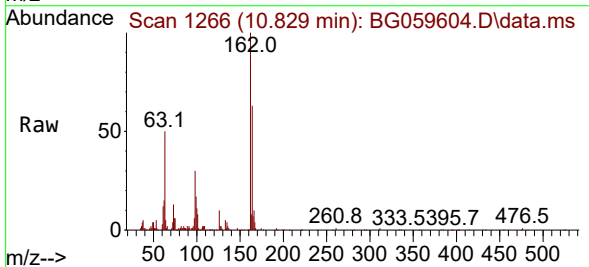
Ion	Ratio	Lower	Upper
93	100		
95	33.9	27.1	40.7
123	11.4	10.3	15.5

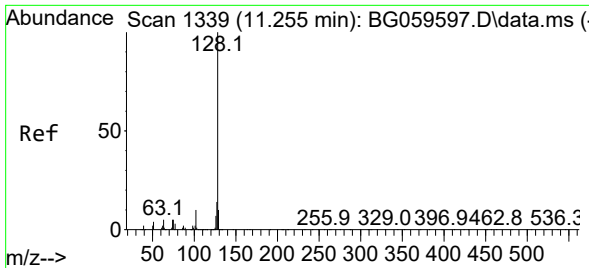


#29  
 2,4-Dichlorophenol  
 Concen: 20.849 ng/ul  
 RT: 10.829 min Scan# 1266  
 Delta R.T. -0.000 min  
 Lab File: BG059604.D  
 Acq: 2 Nov 2023 18:03

Tgt Ion: 162 Resp: 167859

Ion	Ratio	Lower	Upper
162	100		
164	62.8	45.3	67.9
98	29.7	32.2	48.4



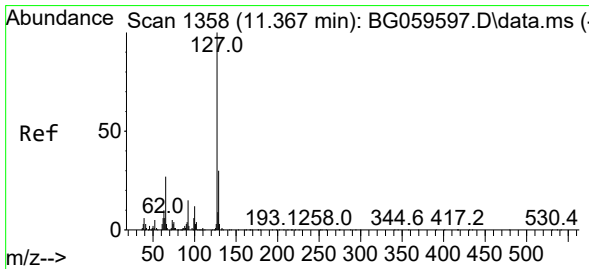
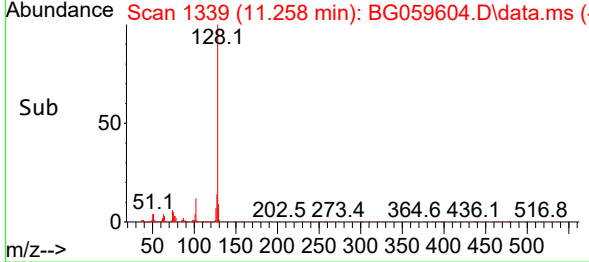
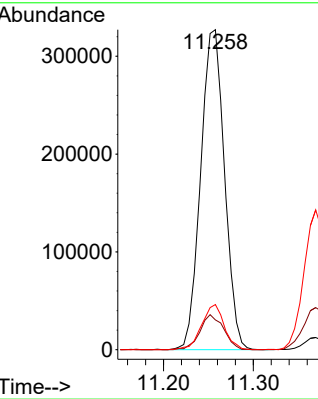
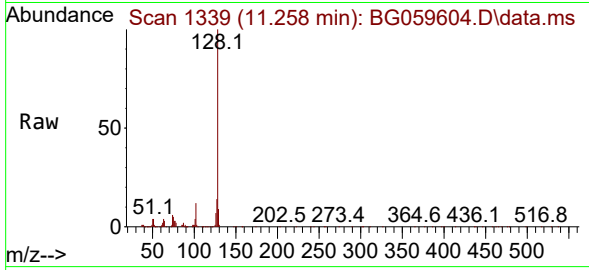


#30  
 Naphthalene  
 Concen: 18.699 ng/uI  
 RT: 11.258 min Scan# 11  
 Delta R.T. -0.006 min  
 Lab File: BG059604.D  
 Acq: 2 Nov 2023 18:03

Instrument :  
 BNA\_G  
 ClientSampleId :  
 SSTD020471

Tgt Ion:128 Resp: 603100

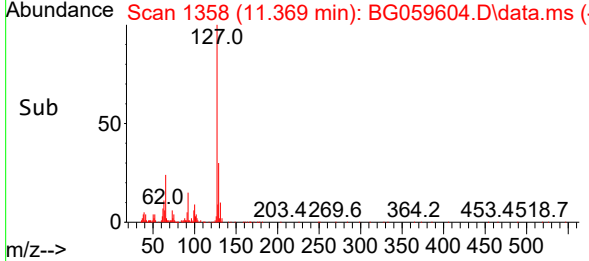
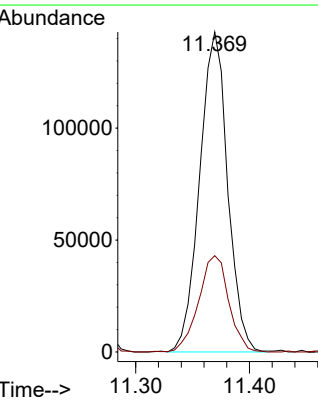
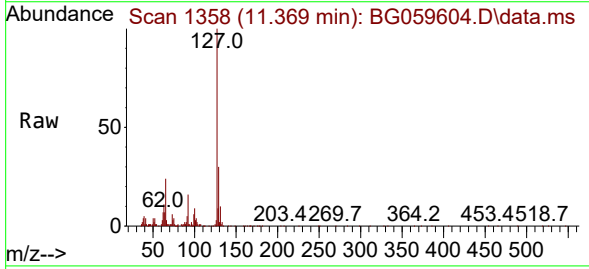
Ion	Ratio	Lower	Upper
128	100		
129	9.3	7.4	11.0
127	14.1	10.5	15.7

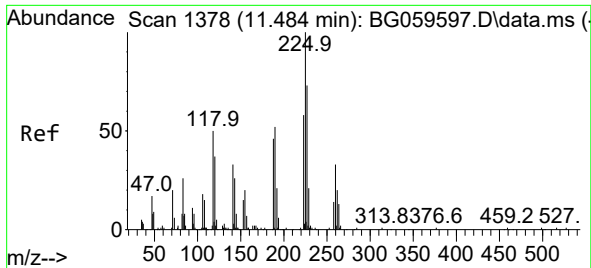


#32  
 4-Chloroaniline  
 Concen: 18.787 ng/uI  
 RT: 11.369 min Scan# 1358  
 Delta R.T. -0.006 min  
 Lab File: BG059604.D  
 Acq: 2 Nov 2023 18:03

Tgt Ion:127 Resp: 244471

Ion	Ratio	Lower	Upper
127	100		
129	30.1	30.4	45.6#

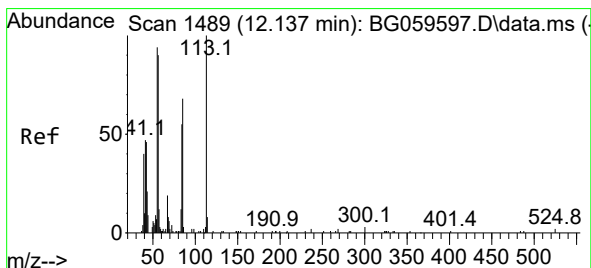
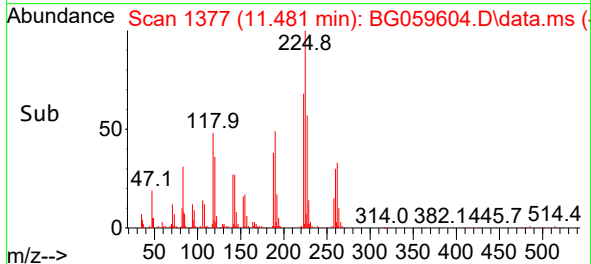
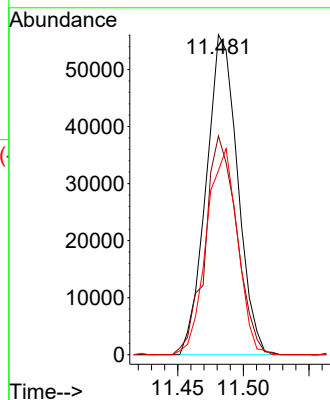
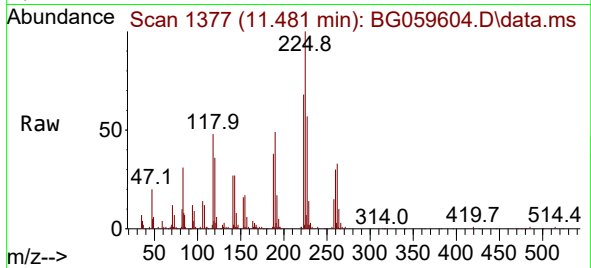




#33  
Hexachlorobutadiene  
Concen: 19.344 ng/ul  
RT: 11.481 min Scan# 11  
Delta R.T. -0.018 min  
Lab File: BG059604.D  
Acq: 2 Nov 2023 18:03

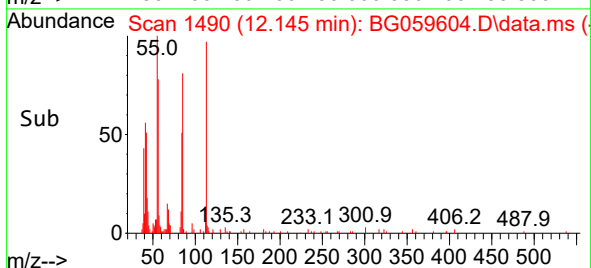
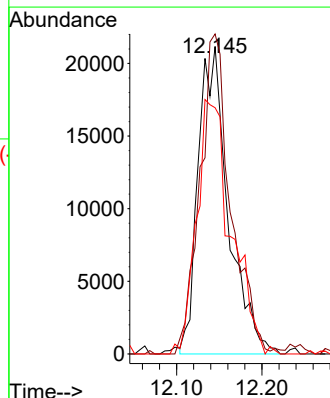
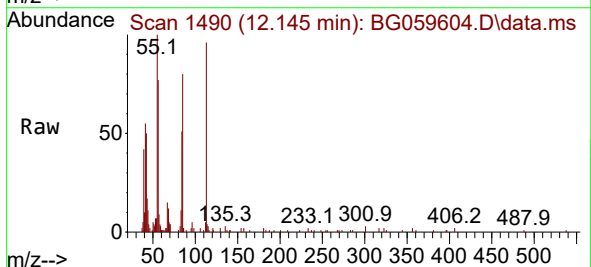
Instrument :  
BNA\_G  
ClientSampleId :  
SSTD020471

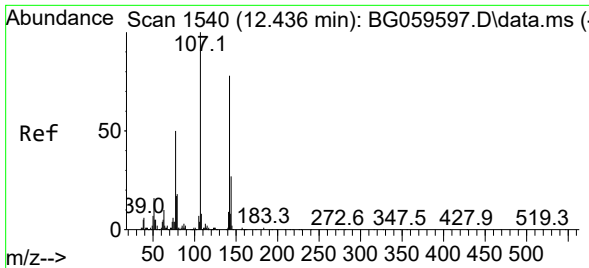
Tgt Ion:225 Resp: 93433  
Ion Ratio Lower Upper  
225 100  
223 68.3 50.8 76.2  
227 57.5 49.8 74.8



#34  
Caprolactam  
Concen: 17.613 ng/ul  
RT: 12.145 min Scan# 1490  
Delta R.T. -0.012 min  
Lab File: BG059604.D  
Acq: 2 Nov 2023 18:03

Tgt Ion:113 Resp: 51878  
Ion Ratio Lower Upper  
113 100  
55 104.0 86.9 130.3  
56 80.1 64.4 96.6



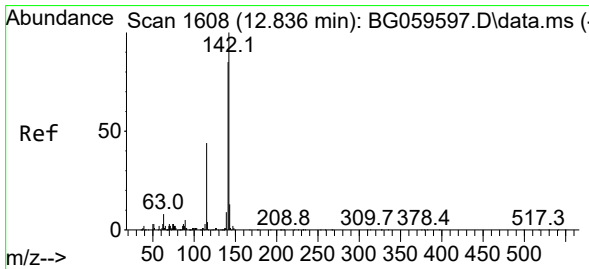
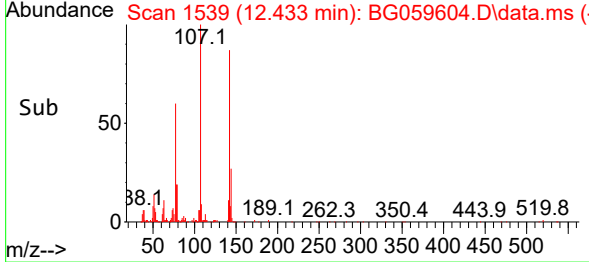
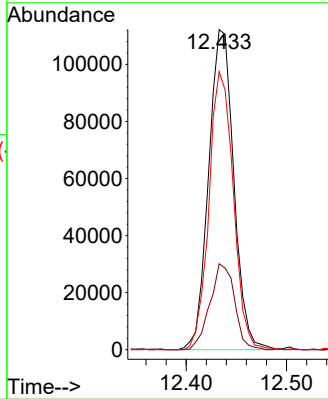
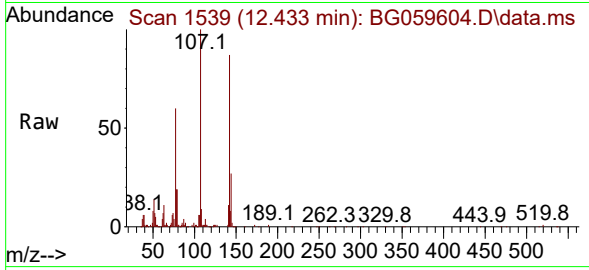


#35  
 4-Chloro-3-methylphenol  
 Concen: 20.313 ng/ul  
 RT: 12.433 min Scan# 11  
 Delta R.T. -0.006 min  
 Lab File: BG059604.D  
 Acq: 2 Nov 2023 18:03

Instrument : BNA\_G  
 ClientSampleId : SSTD020471

Tgt Ion:107 Resp: 195139

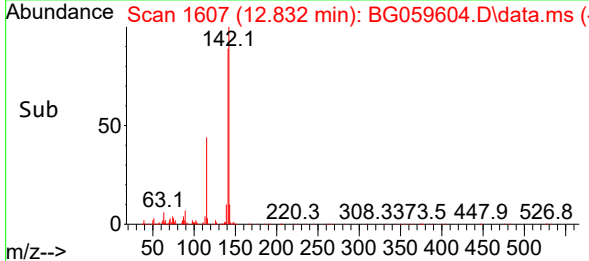
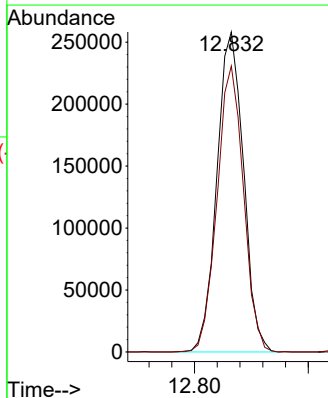
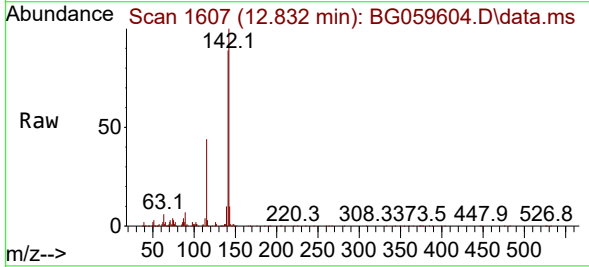
Ion	Ratio	Lower	Upper
107	100		
144	26.8	21.0	31.6
142	86.9	68.2	102.4

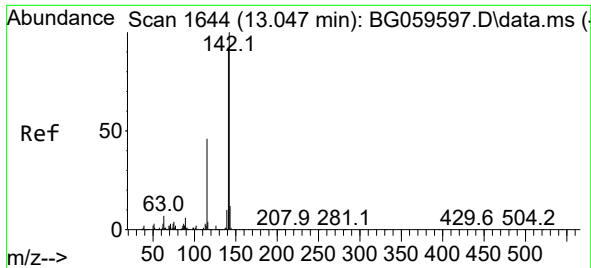


#36  
 2-Methylnaphthalene  
 Concen: 18.885 ng/ul  
 RT: 12.832 min Scan# 1607  
 Delta R.T. -0.012 min  
 Lab File: BG059604.D  
 Acq: 2 Nov 2023 18:03

Tgt Ion:142 Resp: 419023

Ion	Ratio	Lower	Upper
142	100		
141	89.3	71.7	107.5



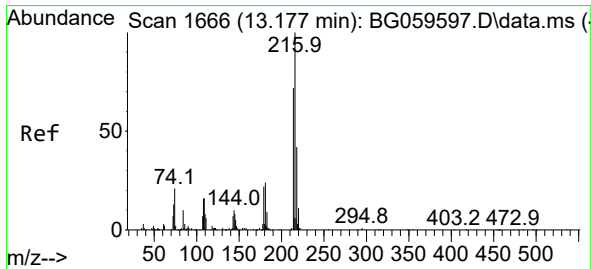
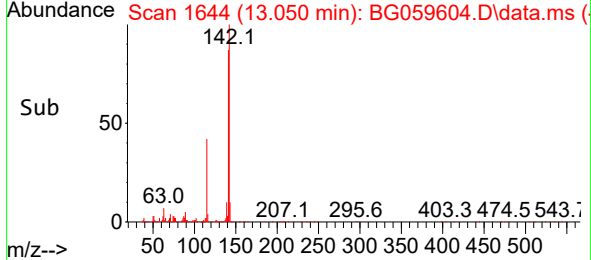
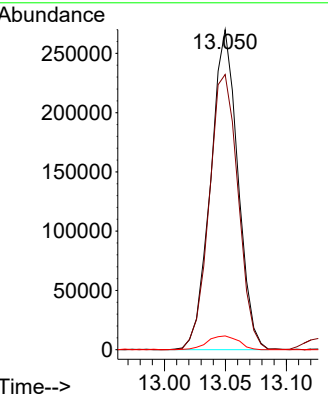
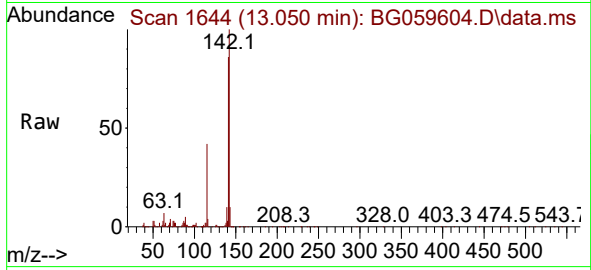


#37  
 1-Methylnaphthalene  
 Concen: 19.029 ng/ul  
 RT: 13.050 min Scan# 1644  
 Delta R.T. -0.012 min  
 Lab File: BG059604.D  
 Acq: 2 Nov 2023 18:03

Instrument :  
 BNA\_G  
 ClientSampleId :  
 SSTD020471

Tgt Ion:142 Resp: 420551

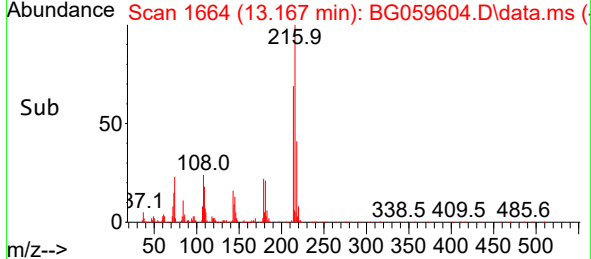
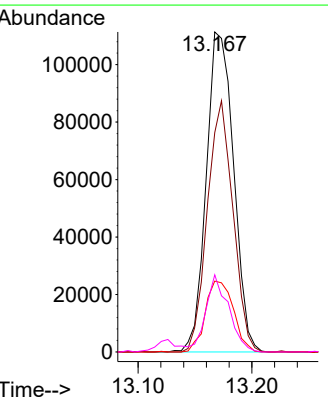
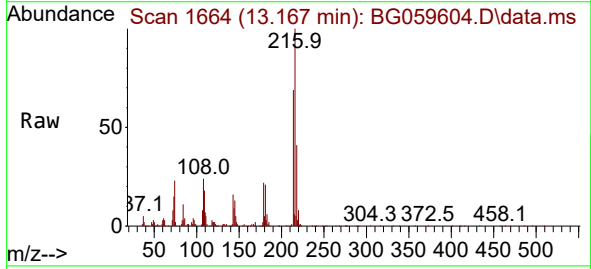
Ion	Ratio	Lower	Upper
142	100		
141	86.0	73.1	109.7
116	4.3	3.3	4.9



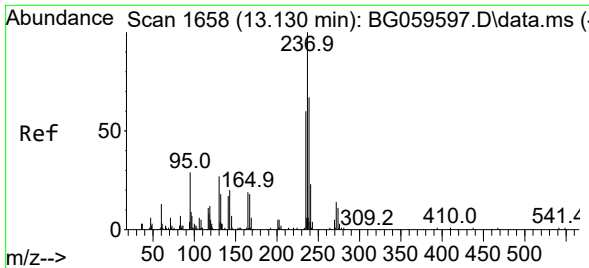
#39  
 1,2,4,5-Tetrachlorobenzene  
 Concen: 20.054 ng/ul  
 RT: 13.167 min Scan# 1664  
 Delta R.T. -0.012 min  
 Lab File: BG059604.D  
 Acq: 2 Nov 2023 18:03

Tgt Ion:216 Resp: 186048

Ion	Ratio	Lower	Upper
216	100		
214	68.5	63.7	95.5
179	22.2	19.2	28.8
108	24.1	16.5	24.7



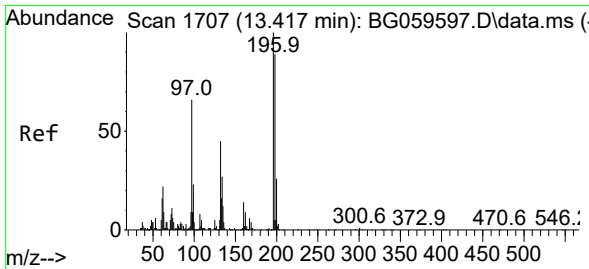
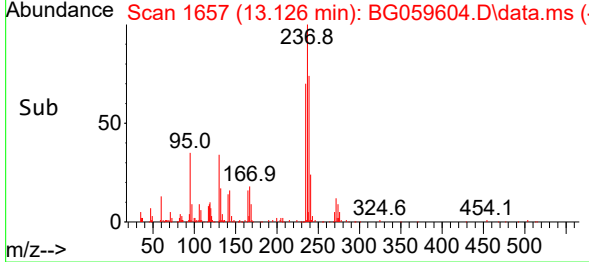
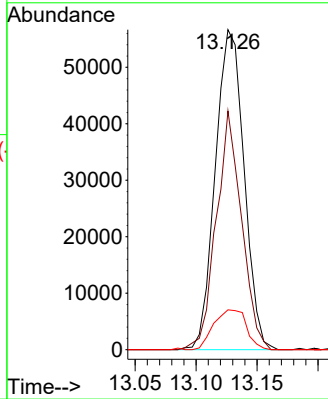
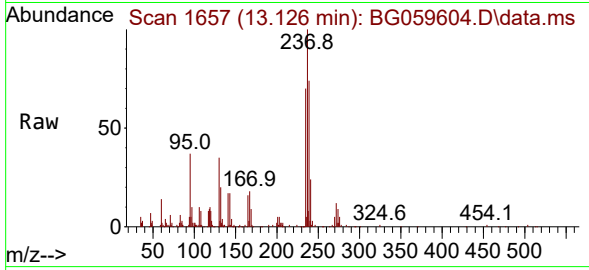




#40  
 Hexachlorocyclopentadiene  
 Concen: 17.191 ng/ul  
 RT: 13.126 min Scan# 10  
 Delta R.T. -0.012 min  
 Lab File: BG059604.D  
 Acq: 2 Nov 2023 18:03

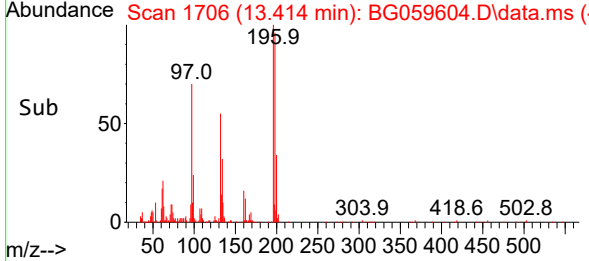
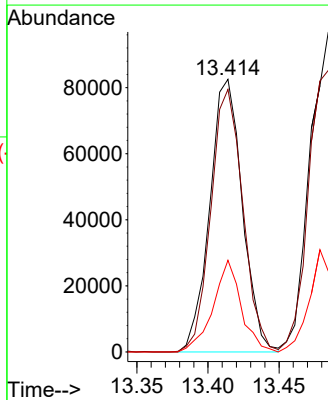
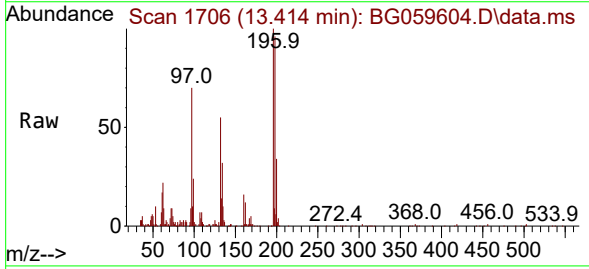
Instrument : BNA\_G  
 ClientSampleId : SSTD020471

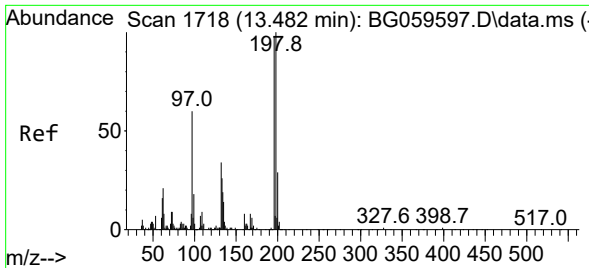
Tgt Ion	Resp	Lower	Upper
237	100		
235	74.6	46.6	69.8#
272	12.5	13.0	19.4#



#41  
 2,4,6-Trichlorophenol  
 Concen: 20.535 ng/ul  
 RT: 13.414 min Scan# 1706  
 Delta R.T. -0.006 min  
 Lab File: BG059604.D  
 Acq: 2 Nov 2023 18:03

Tgt Ion	Resp	Lower	Upper
196	100		
198	96.3	69.6	104.4
200	33.6	23.8	35.8



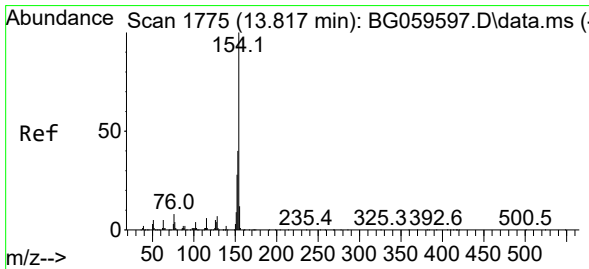
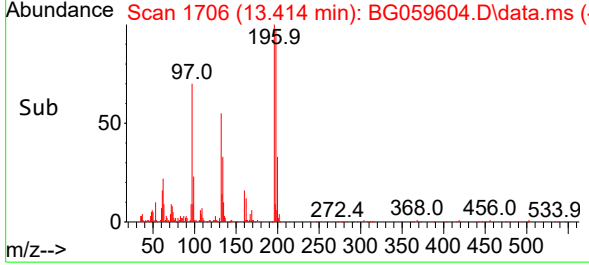
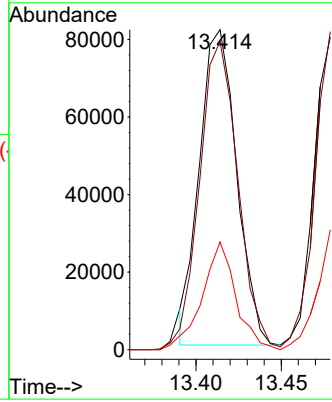
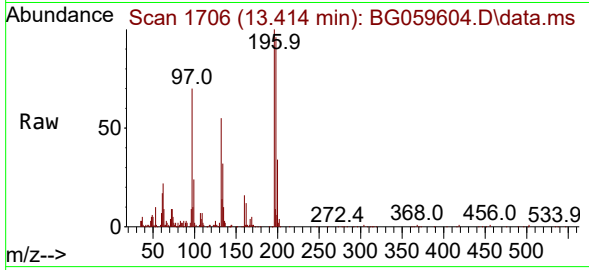


#42  
 2,4,5-Trichlorophenol  
 Concen: 17.723 ng/ul  
 RT: 13.414 min Scan# 1706  
 Delta R.T. -0.071 min  
 Lab File: BG059604.D  
 Acq: 2 Nov 2023 18:03

Instrument :  
 BNA\_G  
 ClientSampleId :  
 SSTD020471

Tgt Ion:196 Resp: 123262

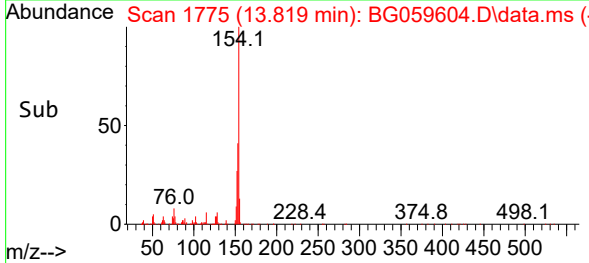
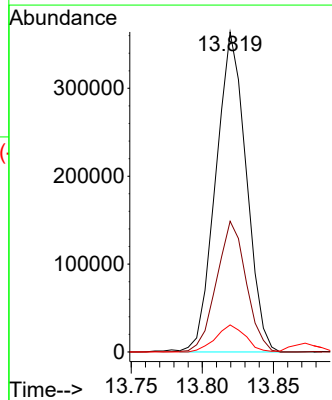
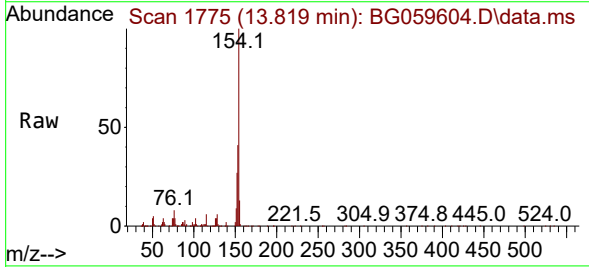
Ion	Ratio	Lower	Upper
196	100		
198	96.3	79.8	119.6
200	33.6	28.0	42.0

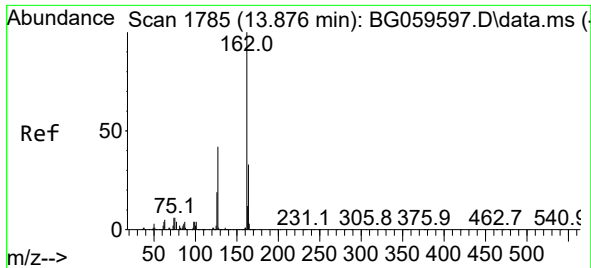


#43  
 1,1'-Biphenyl  
 Concen: 18.584 ng/ul  
 RT: 13.819 min Scan# 1775  
 Delta R.T. -0.012 min  
 Lab File: BG059604.D  
 Acq: 2 Nov 2023 18:03

Tgt Ion:154 Resp: 540752

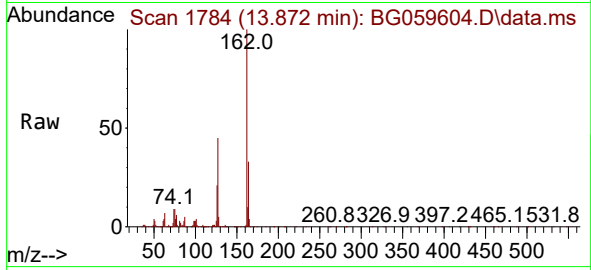
Ion	Ratio	Lower	Upper
154	100		
153	40.9	30.7	46.1
76	8.5	8.2	12.4





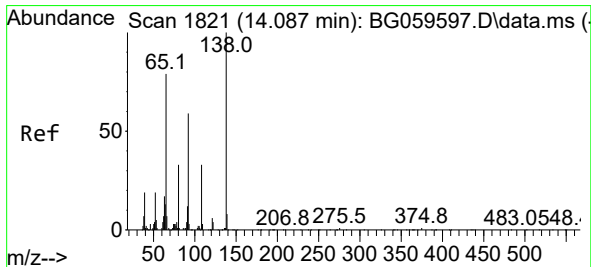
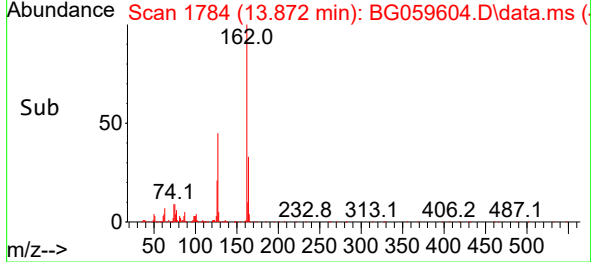
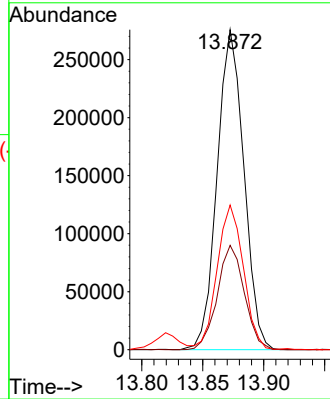
#44  
 2-Chloronaphthalene  
 Concen: 18.611 ng/ul  
 RT: 13.872 min Scan# 1784  
 Delta R.T. -0.012 min  
 Lab File: BG059604.D  
 Acq: 2 Nov 2023 18:03

Instrument :  
 BNA\_G  
 ClientSampleId :  
 SSTD020471



Tgt Ion:162 Resp: 420899

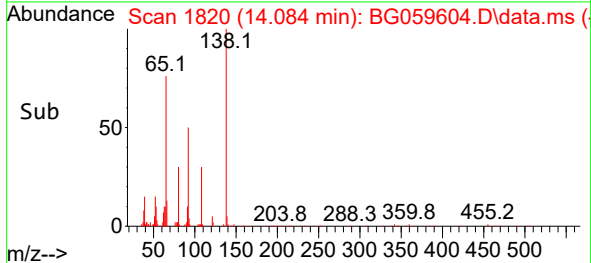
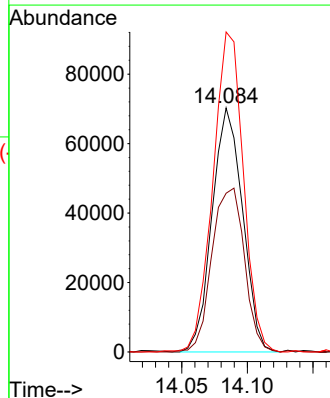
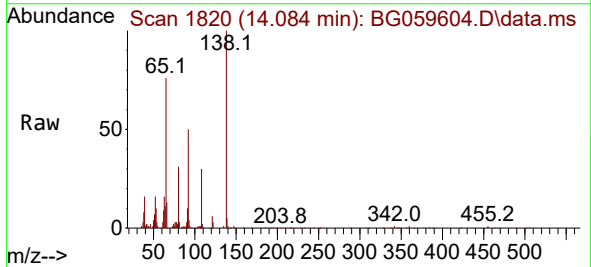
Ion	Ratio	Lower	Upper
162	100		
164	32.6	23.9	35.9
127	45.2	35.3	52.9

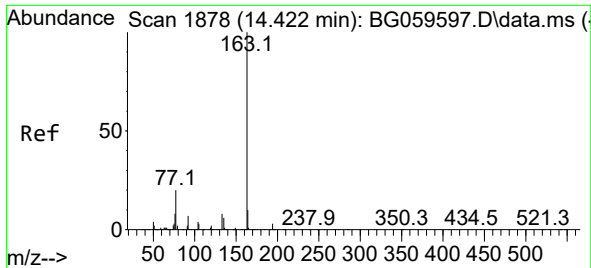


#45  
 2-Nitroaniline  
 Concen: 27.012 ng/ul  
 RT: 14.084 min Scan# 1820  
 Delta R.T. -0.006 min  
 Lab File: BG059604.D  
 Acq: 2 Nov 2023 18:03

Tgt Ion: 65 Resp: 113666

Ion	Ratio	Lower	Upper
65	100		
92	65.0	59.6	89.4
138	131.1	109.0	163.6





#47  
 Dimethylphthalate  
 Concen: 18.110 ng/ul  
 RT: 14.425 min Scan# 1878  
 Delta R.T. -0.012 min  
 Lab File: BG059604.D  
 Acq: 2 Nov 2023 18:03

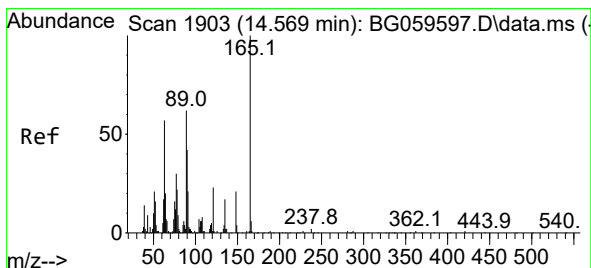
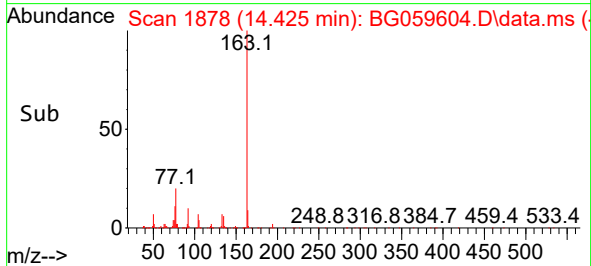
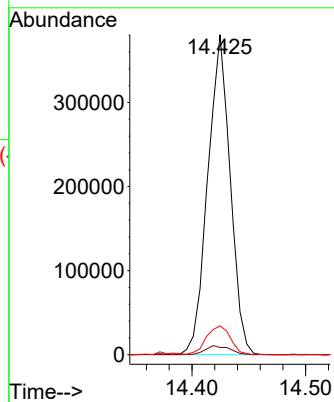
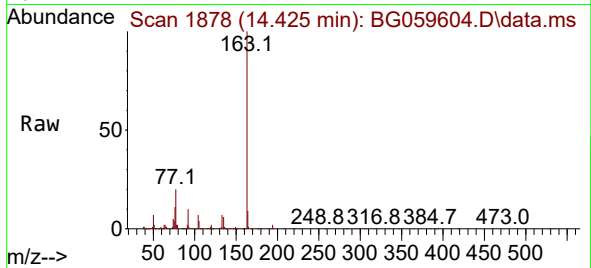
Instrument :

BNA\_G

ClientSampleId :

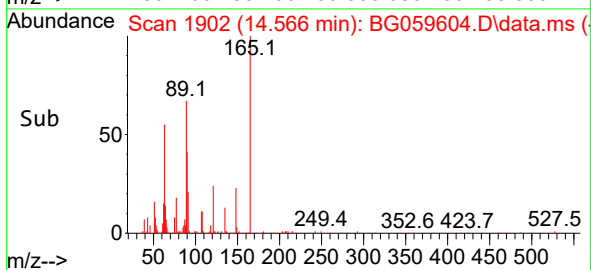
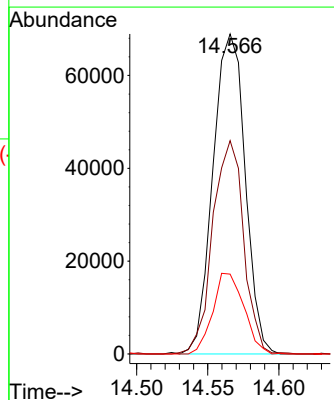
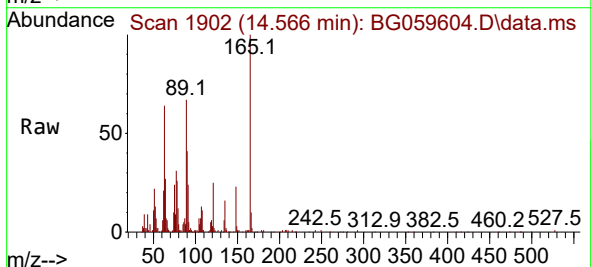
SSTD020471

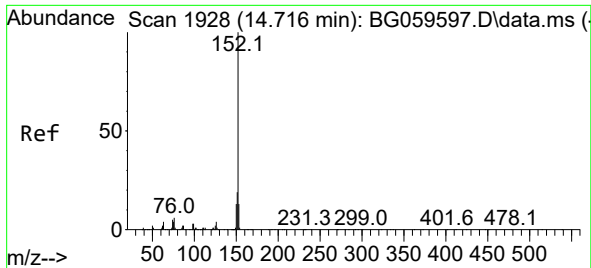
Tgt Ion:163 Resp: 521405  
 Ion Ratio Lower Upper  
 163 100  
 194 2.3 2.6 3.8#  
 164 9.0 6.6 10.0



#48  
 2,6-Dinitrotoluene  
 Concen: 25.002 ng/ul  
 RT: 14.566 min Scan# 1902  
 Delta R.T. -0.006 min  
 Lab File: BG059604.D  
 Acq: 2 Nov 2023 18:03

Tgt Ion:165 Resp: 108585  
 Ion Ratio Lower Upper  
 165 100  
 89 66.6 41.0 61.4#  
 121 24.9 12.3 18.5#



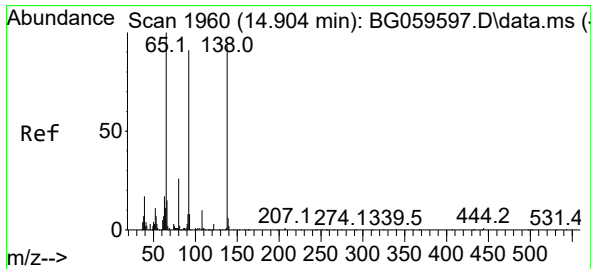
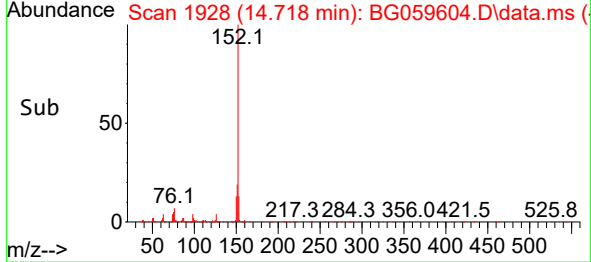
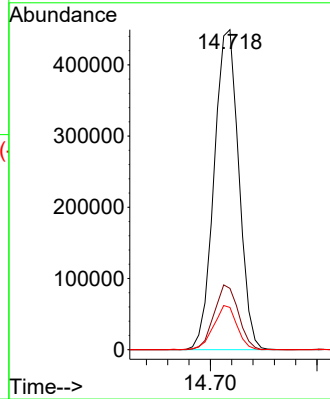
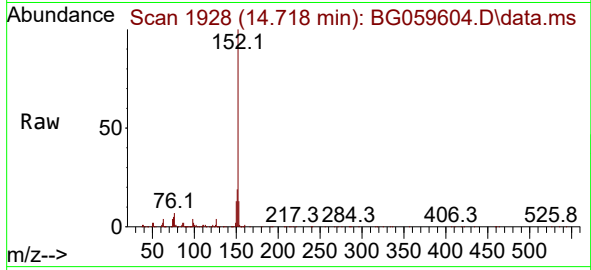


#50  
 Acenaphthylene  
 Concen: 18.285 ng/ul  
 RT: 14.718 min Scan# 1928  
 Delta R.T. -0.006 min  
 Lab File: BG059604.D  
 Acq: 2 Nov 2023 18:03

Instrument :  
 BNA\_G  
 ClientSampleId :  
 SSTD020471

Tgt Ion:152 Resp: 720492

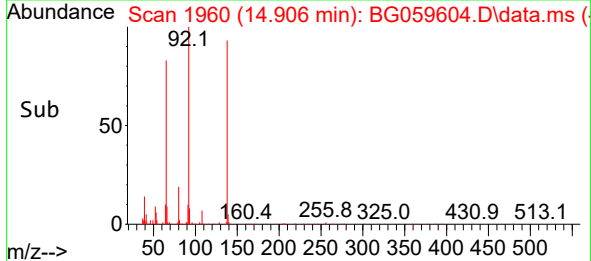
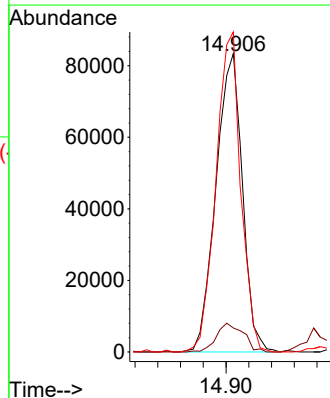
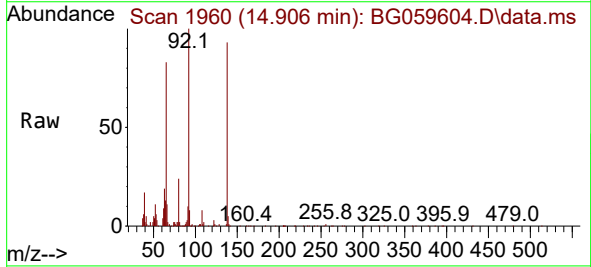
Ion	Ratio	Lower	Upper
152	100		
151	19.1	16.6	25.0
153	13.2	9.4	14.2

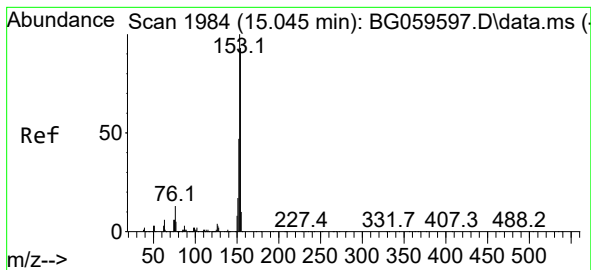


#51  
 3-Nitroaniline  
 Concen: 24.889 ng/ul  
 RT: 14.906 min Scan# 1960  
 Delta R.T. -0.000 min  
 Lab File: BG059604.D  
 Acq: 2 Nov 2023 18:03

Tgt Ion:138 Resp: 134735

Ion	Ratio	Lower	Upper
138	100		
108	8.0	17.1	25.7#
92	107.3	101.8	152.8

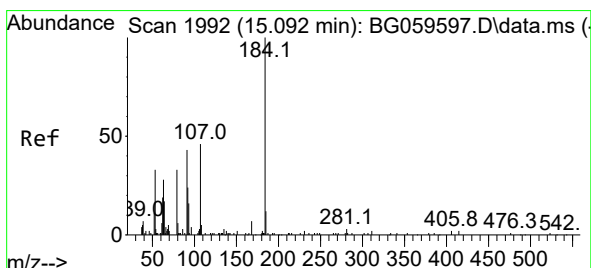
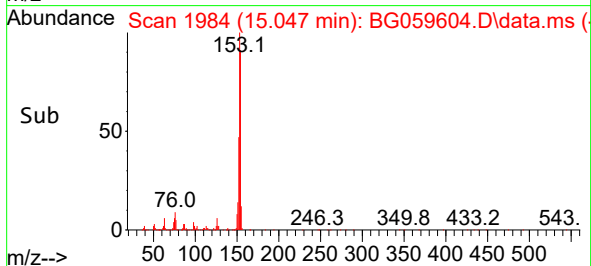
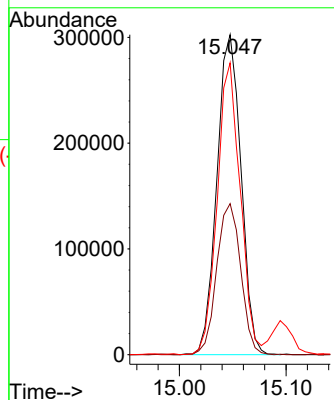
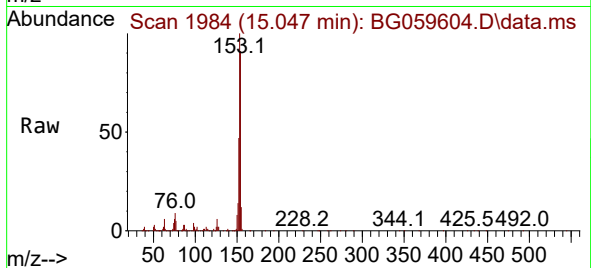




#52  
 Acenaphthene  
 Concen: 18.492 ng/uI  
 RT: 15.047 min Scan# 1984  
 Delta R.T. -0.006 min  
 Lab File: BG059604.D  
 Acq: 2 Nov 2023 18:03

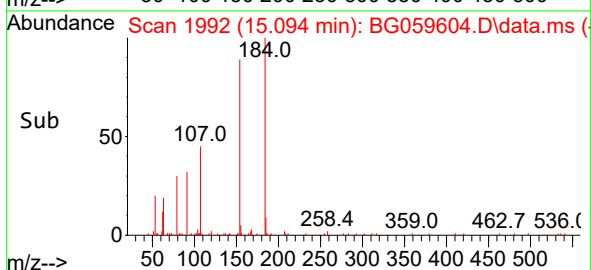
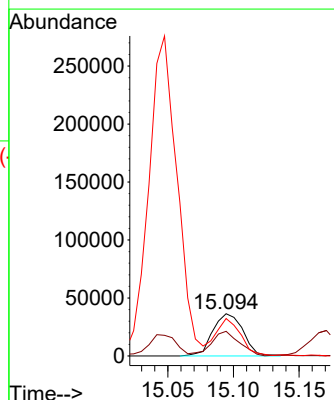
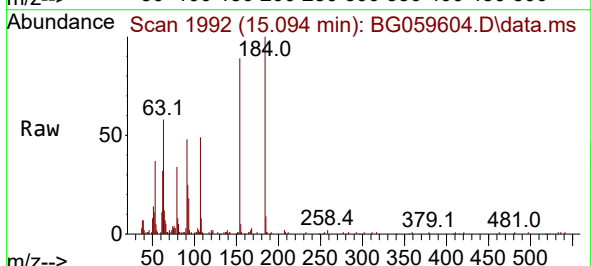
Instrument :  
 BNA\_G  
 ClientSampleId :  
 SSTD020471

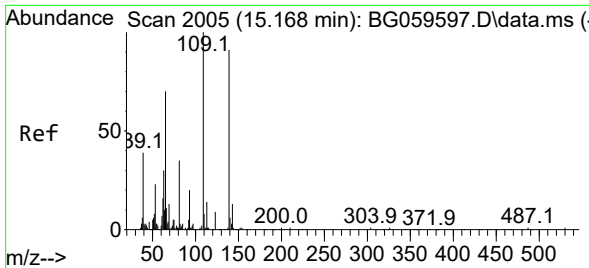
Tgt Ion:153 Resp: 474952  
 Ion Ratio Lower Upper  
 153 100  
 152 47.2 37.6 56.4  
 154 91.2 69.4 104.0



#53  
 2,4-Dinitrophenol  
 Concen: 23.654 ng/uI  
 RT: 15.094 min Scan# 1992  
 Delta R.T. -0.006 min  
 Lab File: BG059604.D  
 Acq: 2 Nov 2023 18:03

Tgt Ion:184 Resp: 58370  
 Ion Ratio Lower Upper  
 184 100  
 63 58.2 35.0 52.6#  
 154 88.6 49.8 74.8#

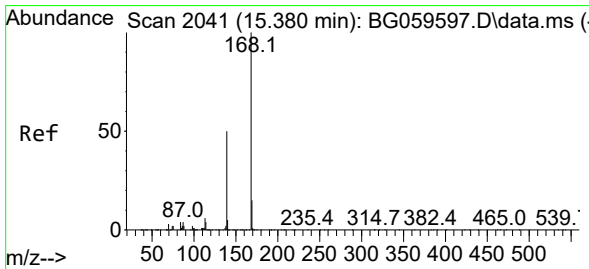
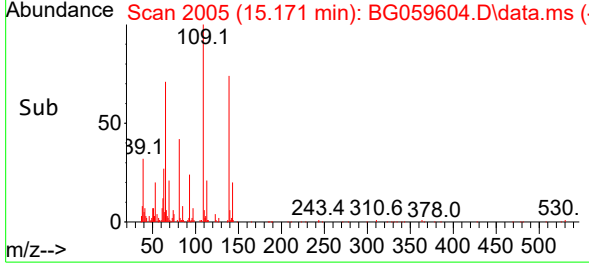
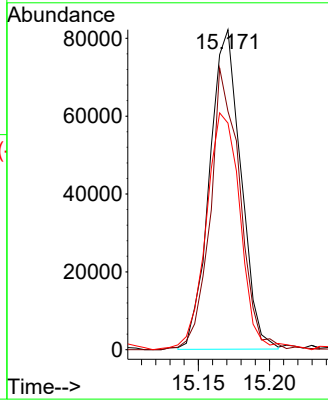
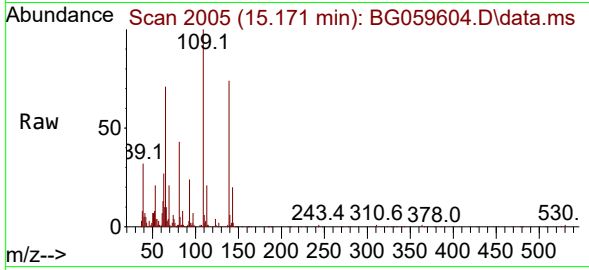




#55  
 4-Nitrophenol  
 Concen: 22.879 ng/ul  
 RT: 15.171 min Scan# 2005  
 Delta R.T. 0.006 min  
 Lab File: BG059604.D  
 Acq: 2 Nov 2023 18:03

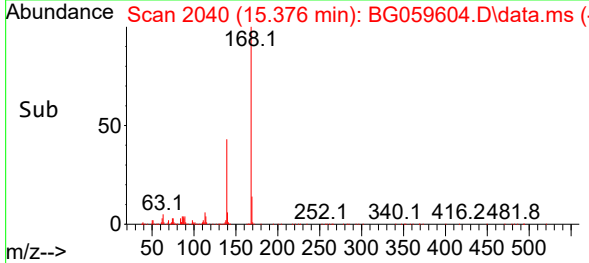
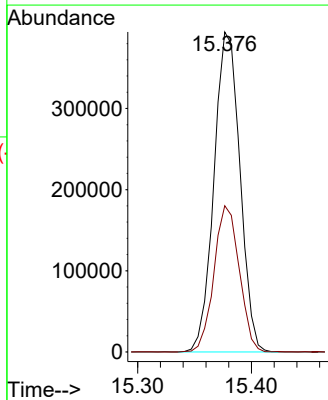
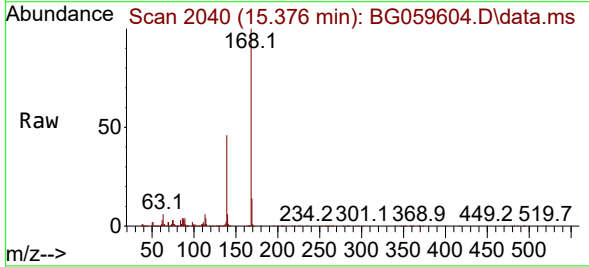
Instrument : BNA\_G  
 ClientSampleId : SSTD020471

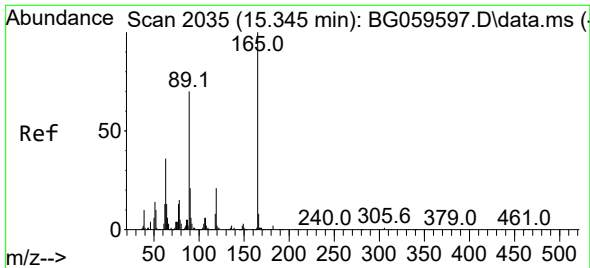
Tgt Ion	Resp	Lower	Upper
109	125997		
139	74.5	72.2	108.2
65	70.8	57.3	85.9



#56  
 Dibenzofuran  
 Concen: 18.781 ng/ul  
 RT: 15.376 min Scan# 2040  
 Delta R.T. -0.012 min  
 Lab File: BG059604.D  
 Acq: 2 Nov 2023 18:03

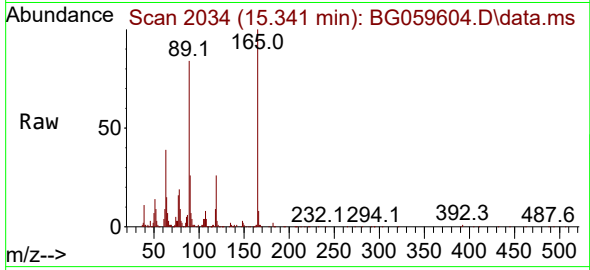
Tgt Ion	Resp	Lower	Upper
168	625379		
139	45.7	33.8	50.8



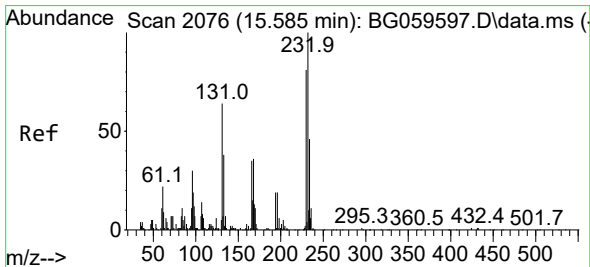
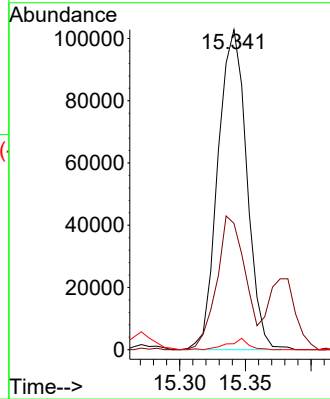
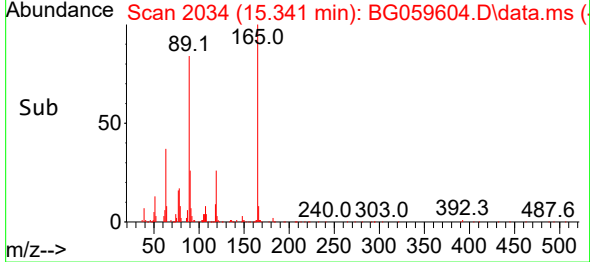


#57  
 2,4-Dinitrotoluene  
 Concen: 25.673 ng/ul  
 RT: 15.341 min Scan# 2035  
 Delta R.T. -0.006 min  
 Lab File: BG059604.D  
 Acq: 2 Nov 2023 18:03

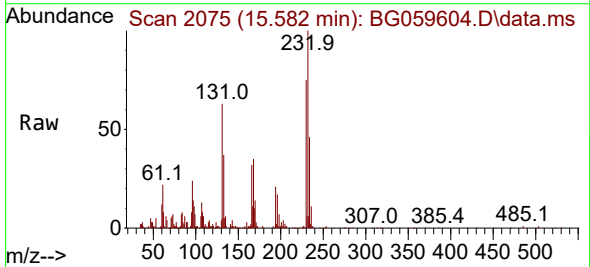
Instrument : BNA\_G  
 ClientSampleId : SSTD020471



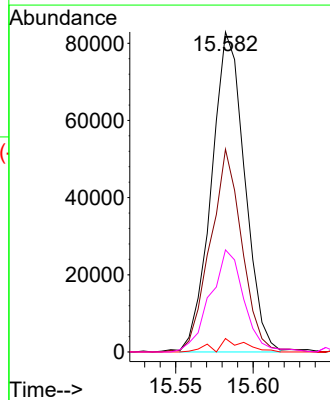
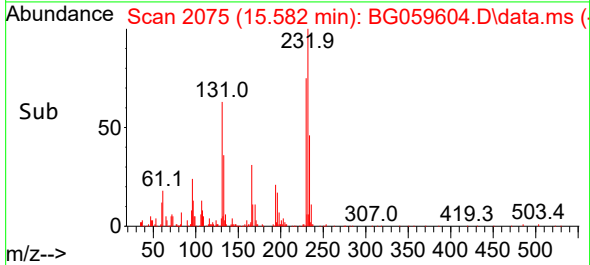
Tgt Ion:165 Resp: 156835  
 Ion Ratio Lower Upper  
 165 100  
 63 39.5 30.9 46.3  
 182 1.9 1.8 2.6



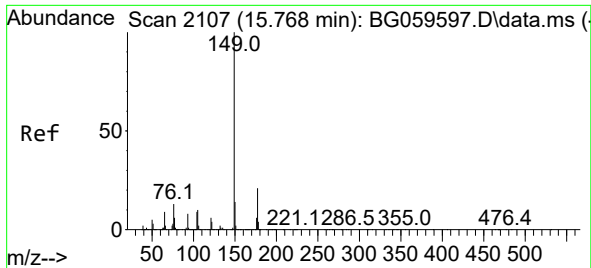
#58  
 2,3,4,6-Tetrachlorophenol  
 Concen: 22.587 ng/ul  
 RT: 15.582 min Scan# 2075  
 Delta R.T. -0.006 min  
 Lab File: BG059604.D  
 Acq: 2 Nov 2023 18:03



Tgt Ion:232 Resp: 123294  
 Ion Ratio Lower Upper  
 232 100  
 131 63.4 44.2 66.2  
 130 4.2 2.3 3.5#  
 166 31.9 32.6 48.8#







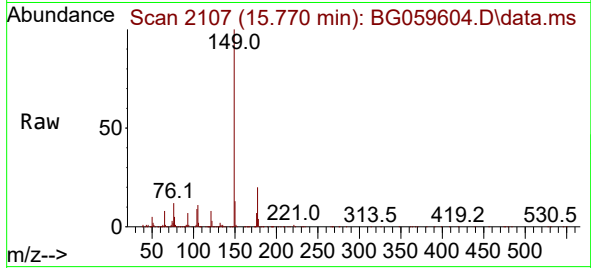
#59  
 Diethylphthalate  
 Concen: 17.596 ng/uI  
 RT: 15.770 min Scan# 2107  
 Delta R.T. -0.012 min  
 Lab File: BG059604.D  
 Acq: 2 Nov 2023 18:03

Instrument :

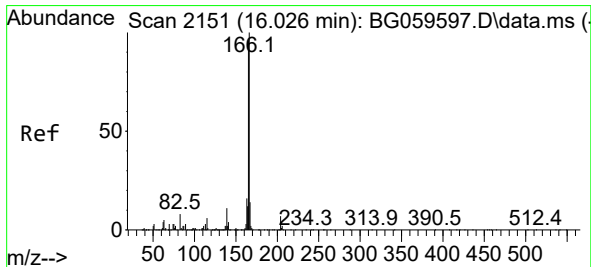
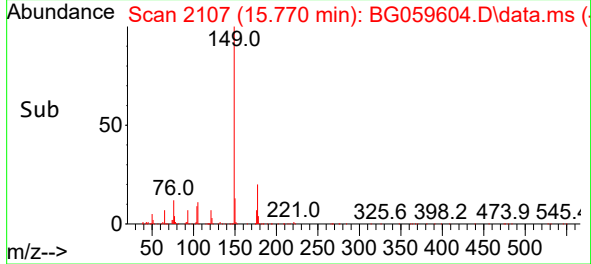
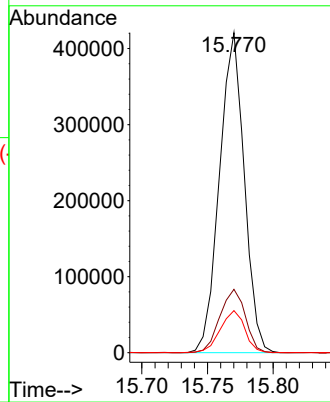
BNA\_G

ClientSampleId :

SSTD020471

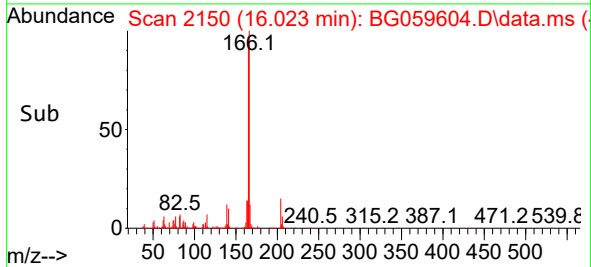
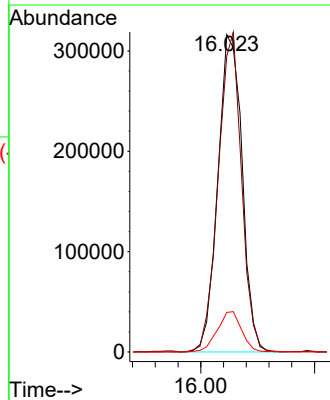
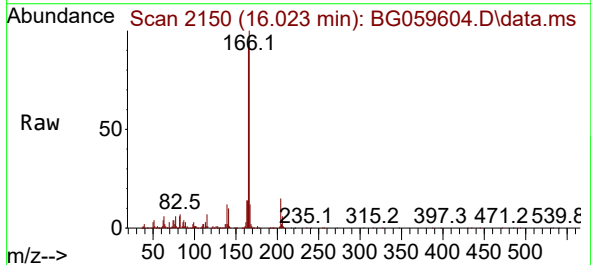


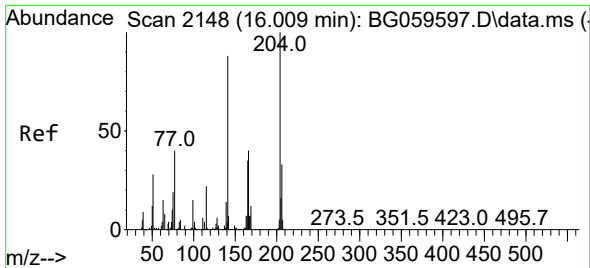
Tgt Ion:149 Resp: 552609  
 Ion Ratio Lower Upper  
 149 100  
 177 19.8 16.3 24.5  
 150 13.1 9.1 13.7



#61  
 Fluorene  
 Concen: 16.316 ng/uI  
 RT: 16.023 min Scan# 2150  
 Delta R.T. -0.012 min  
 Lab File: BG059604.D  
 Acq: 2 Nov 2023 18:03

Tgt Ion:166 Resp: 469017  
 Ion Ratio Lower Upper  
 166 100  
 165 93.3 74.4 111.6  
 167 12.4 9.1 13.7



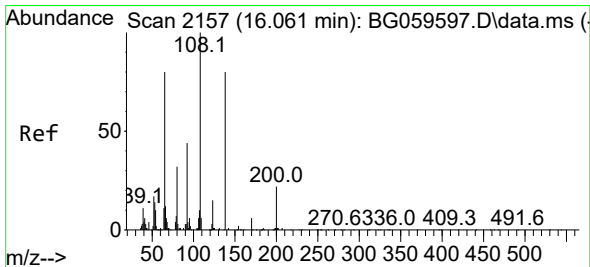
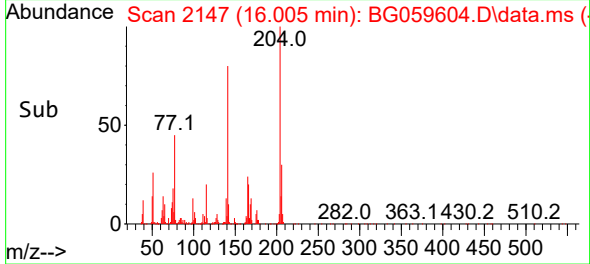
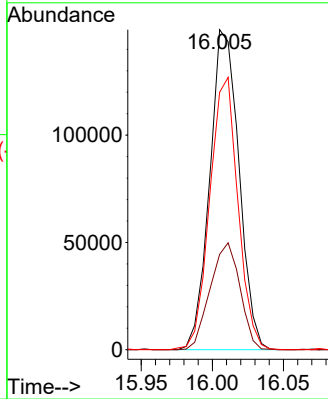
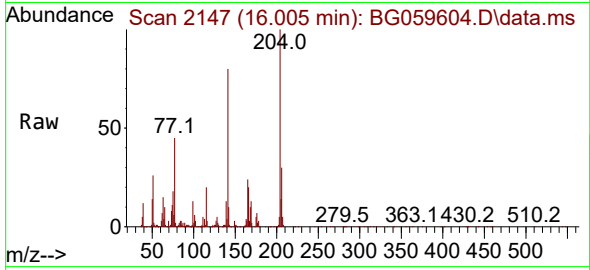


#62  
 4-Chlorophenyl-phenylether  
 Concen: 17.344 ng/ul  
 RT: 16.005 min Scan# 2147  
 Delta R.T. -0.018 min  
 Lab File: BG059604.D  
 Acq: 2 Nov 2023 18:03

Instrument :  
 BNA\_G  
 ClientSampleId :  
 SSTD020471

Tgt Ion:204 Resp: 213078

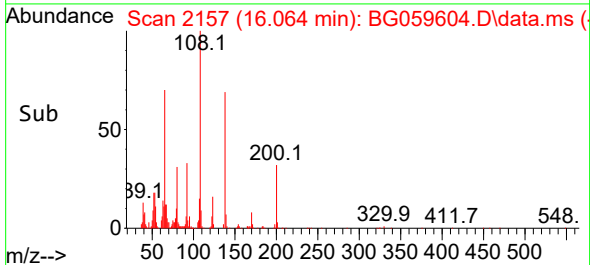
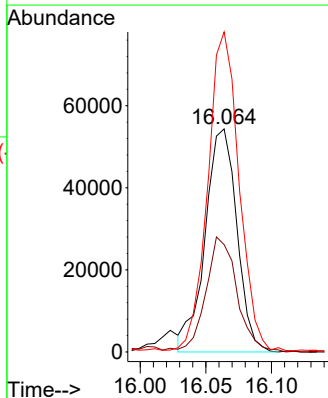
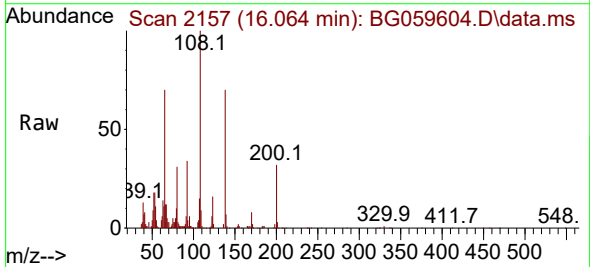
Ion	Ratio	Lower	Upper
204	100		
206	29.8	28.8	43.2
141	80.5	68.6	103.0

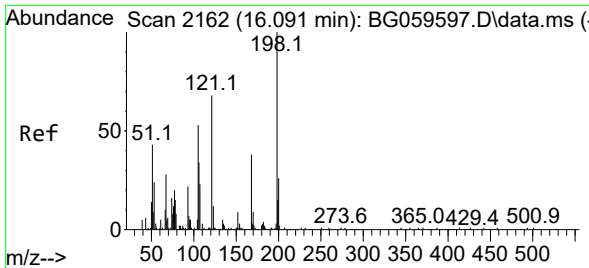


#63  
 4-Nitroaniline  
 Concen: 15.932 ng/ul  
 RT: 16.064 min Scan# 2157  
 Delta R.T. -0.006 min  
 Lab File: BG059604.D  
 Acq: 2 Nov 2023 18:03

Tgt Ion:138 Resp: 91531

Ion	Ratio	Lower	Upper
138	100		
92	48.2	49.8	74.8#
108	143.5	100.9	151.3



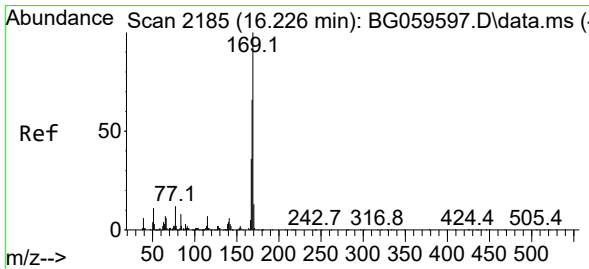
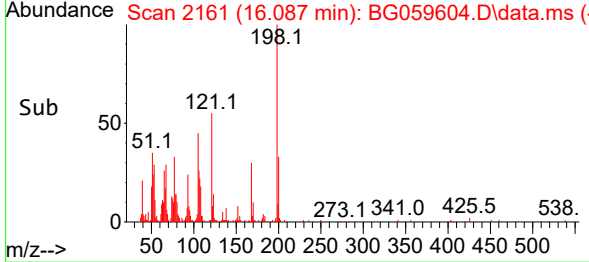
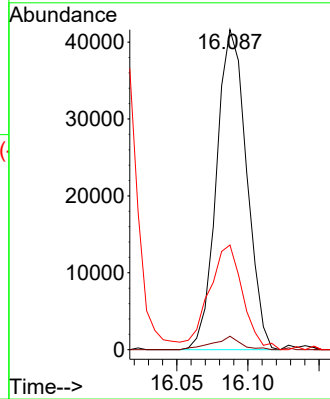
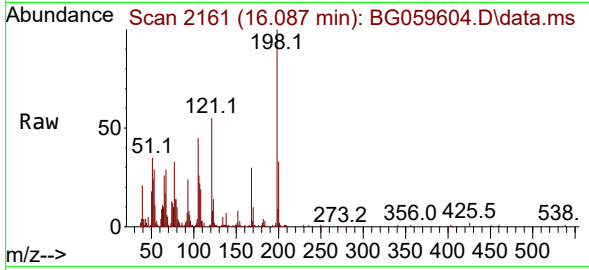


#66  
 4,6-Dinitro-2-methylphenol  
 Concen: 24.715 ng/ul  
 RT: 16.087 min Scan# 2161  
 Delta R.T. -0.006 min  
 Lab File: BG059604.D  
 Acq: 2 Nov 2023 18:03

Instrument :  
 BNA\_G  
 ClientSampleId :  
 SSTD020471

Tgt Ion:198 Resp: 61335

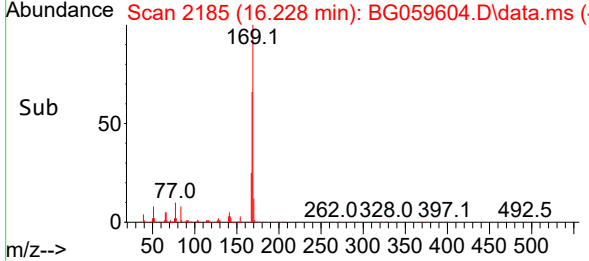
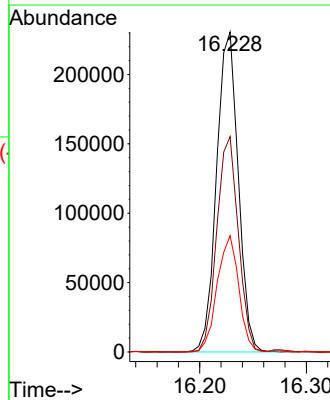
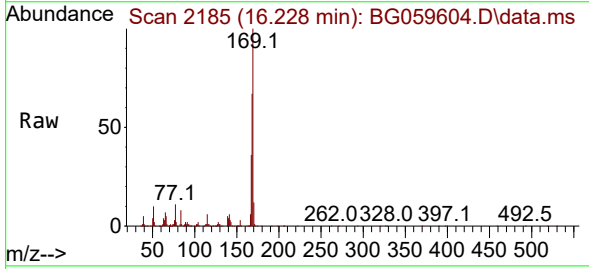
Ion	Ratio	Lower	Upper
198	100		
182	4.2	1.4	2.0#
77	32.7	15.8	23.8#

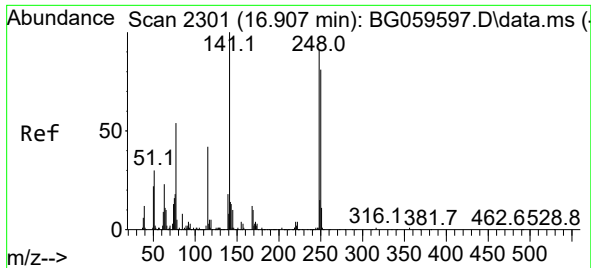


#67  
 N-Nitrosodiphenylamine  
 Concen: 19.137 ng/ul  
 RT: 16.228 min Scan# 2185  
 Delta R.T. -0.006 min  
 Lab File: BG059604.D  
 Acq: 2 Nov 2023 18:03

Tgt Ion:169 Resp: 325150

Ion	Ratio	Lower	Upper
169	100		
168	67.3	54.2	81.2
167	36.3	31.3	46.9

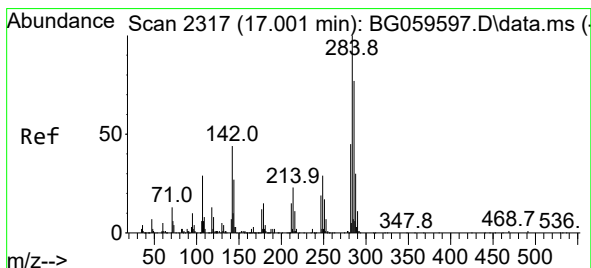
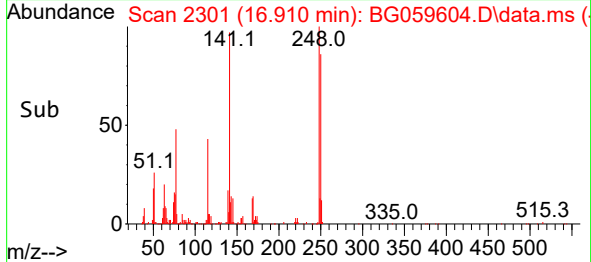
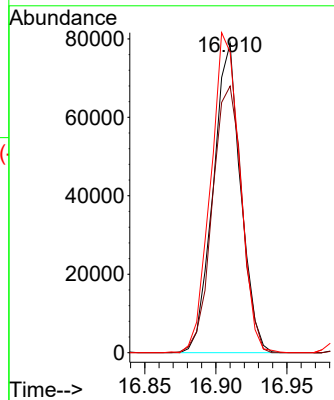
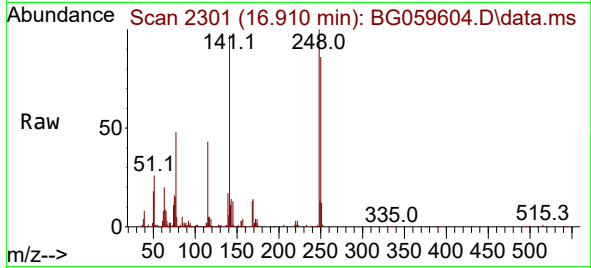




#68  
 4-Bromophenyl-phenylether  
 Concen: 21.335 ng/ul  
 RT: 16.910 min Scan# 21  
 Delta R.T. -0.006 min  
 Lab File: BG059604.D  
 Acq: 2 Nov 2023 18:03

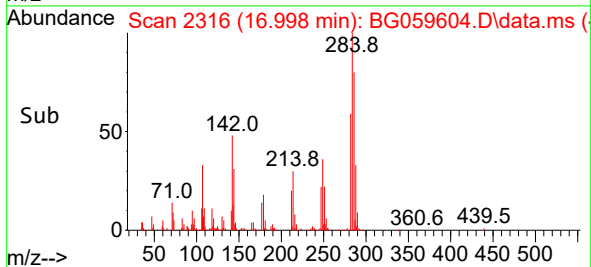
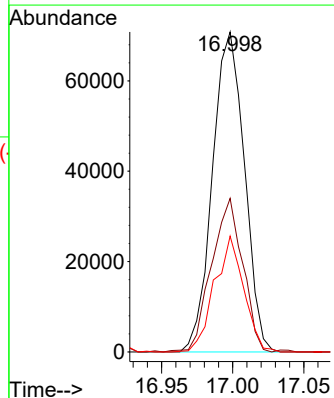
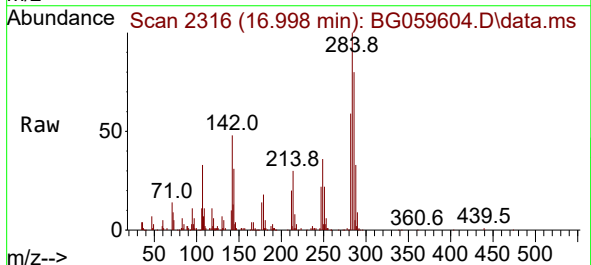
Instrument :  
 BNA\_G  
 ClientSampleId :  
 SSTD020471

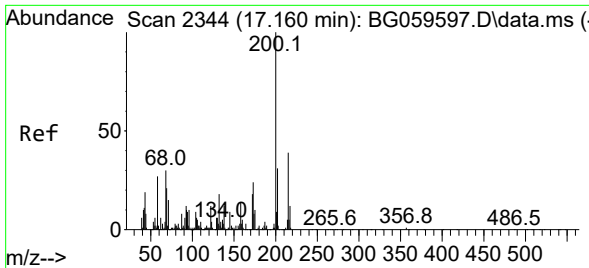
Tgt Ion:248 Resp: 106158  
 Ion Ratio Lower Upper  
 248 100  
 250 86.2 74.2 111.2  
 141 97.2 88.5 132.7



#69  
 Hexachlorobenzene  
 Concen: 19.266 ng/ul  
 RT: 16.998 min Scan# 2316  
 Delta R.T. -0.006 min  
 Lab File: BG059604.D  
 Acq: 2 Nov 2023 18:03

Tgt Ion:284 Resp: 110792  
 Ion Ratio Lower Upper  
 284 100  
 142 48.0 39.6 59.4  
 249 36.2 28.2 42.2

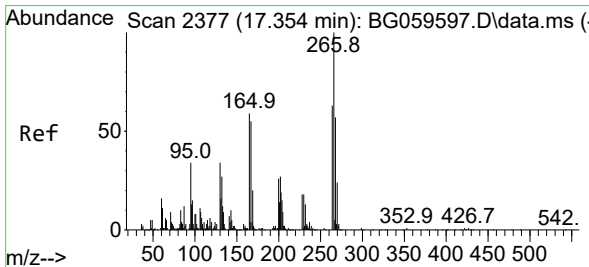
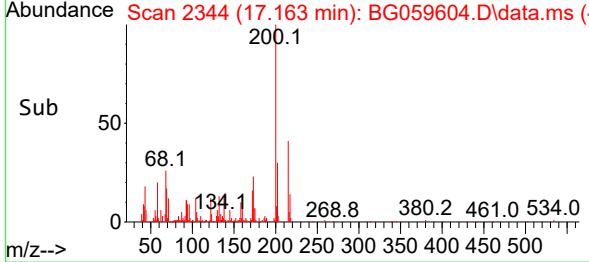
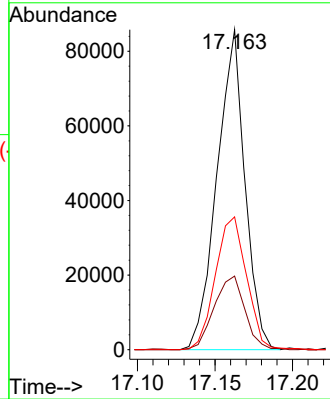
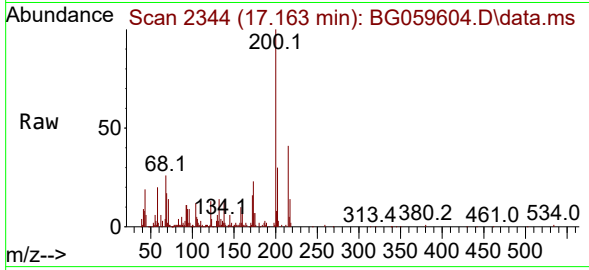




#70  
 Atrazine  
 Concen: 20.365 ng/uI  
 RT: 17.163 min Scan# 21  
 Delta R.T. -0.012 min  
 Lab File: BG059604.D  
 Acq: 2 Nov 2023 18:03

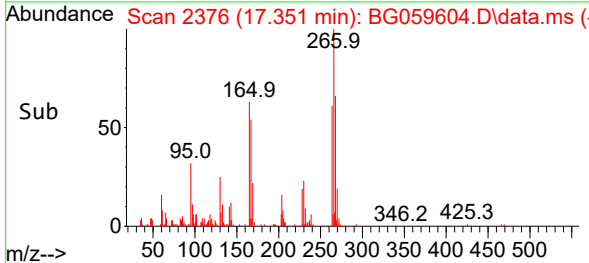
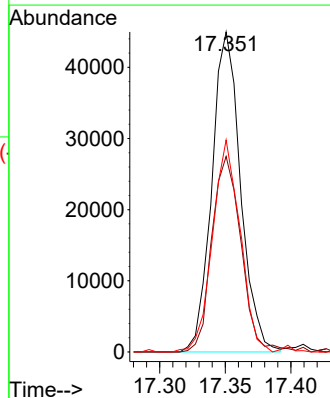
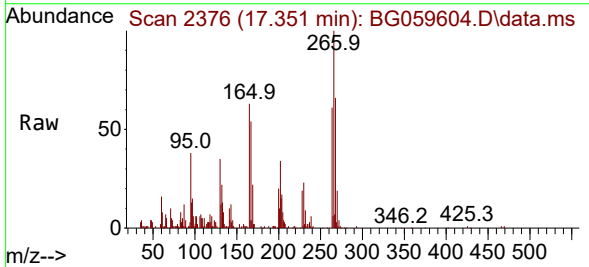
Instrument :  
 BNA\_G  
 ClientSampleId :  
 SSTD020471

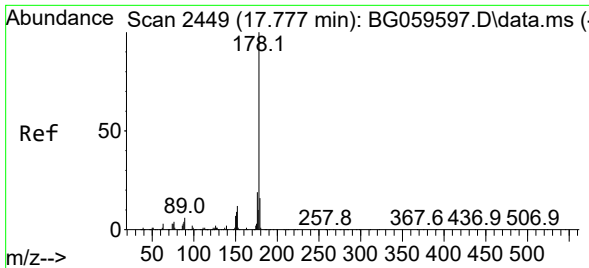
Tgt Ion:200 Resp: 107219  
 Ion Ratio Lower Upper  
 200 100  
 173 23.0 25.7 38.5#  
 215 41.5 32.1 48.1



#71  
 Pentachlorophenol  
 Concen: 20.799 ng/uI  
 RT: 17.351 min Scan# 2376  
 Delta R.T. -0.006 min  
 Lab File: BG059604.D  
 Acq: 2 Nov 2023 18:03

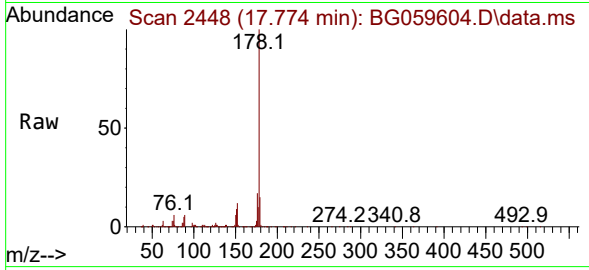
Tgt Ion:266 Resp: 68328  
 Ion Ratio Lower Upper  
 266 100  
 264 61.1 46.2 69.2  
 268 66.3 46.4 69.6



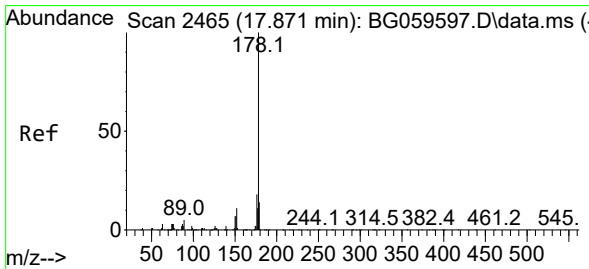
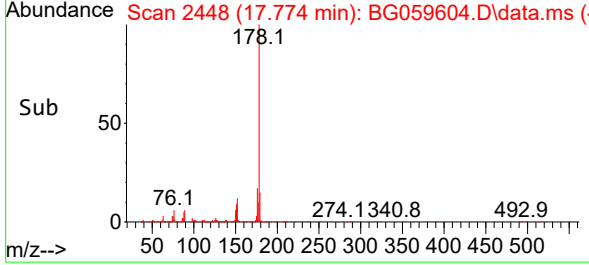
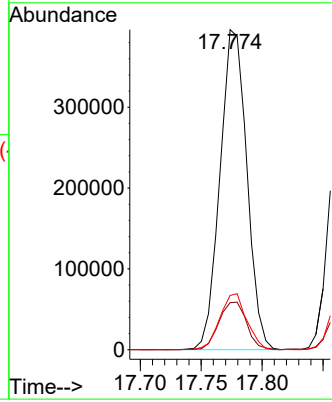


#72  
 Phenanthrene  
 Concen: 18.819 ng/uI  
 RT: 17.774 min Scan# 2448  
 Delta R.T. -0.012 min  
 Lab File: BG059604.D  
 Acq: 2 Nov 2023 18:03

Instrument :  
 BNA\_G  
 ClientSampleId :  
 SSTD020471

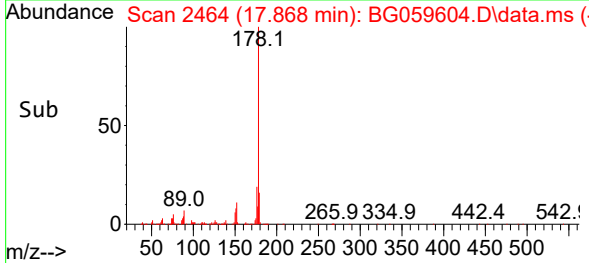
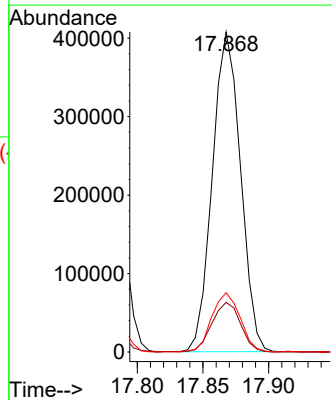
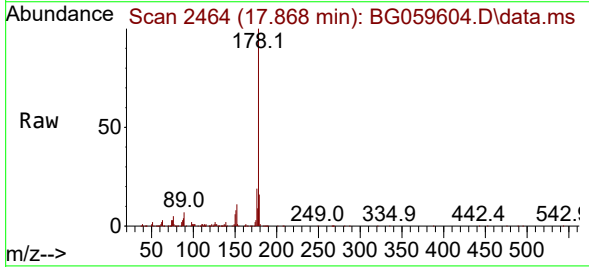


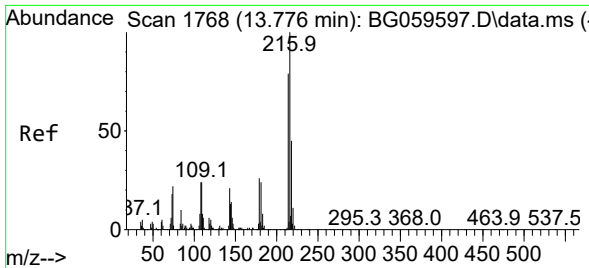
Tgt Ion:178 Resp: 608332  
 Ion Ratio Lower Upper  
 178 100  
 179 14.7 11.3 16.9  
 176 17.0 15.4 23.0



#74  
 Anthracene  
 Concen: 18.620 ng/uI  
 RT: 17.868 min Scan# 2464  
 Delta R.T. -0.012 min  
 Lab File: BG059604.D  
 Acq: 2 Nov 2023 18:03

Tgt Ion:178 Resp: 607751  
 Ion Ratio Lower Upper  
 178 100  
 179 15.5 13.1 19.7  
 176 18.5 13.9 20.9

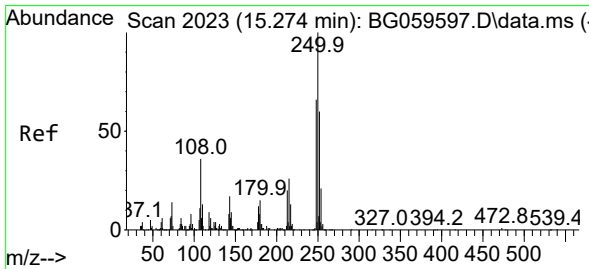
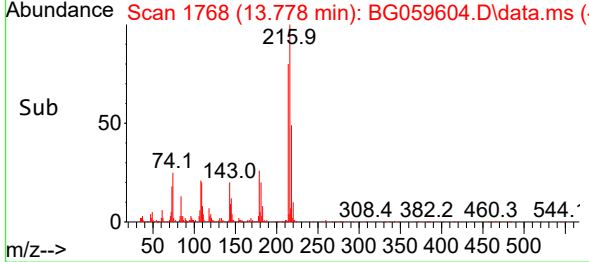
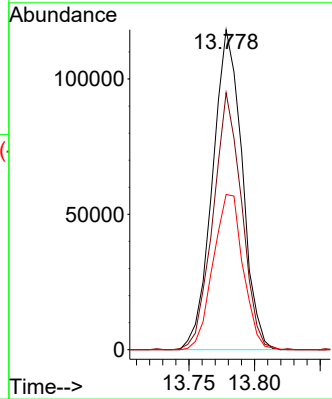
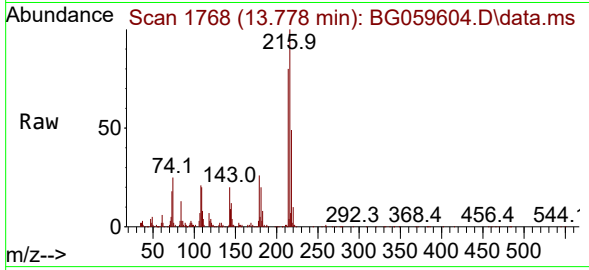




#75  
 1,2,3,4-Tetrachlorobenzene  
 Concen: 27.987 ng/uL  
 RT: 13.778 min Scan# 11  
 Delta R.T. -0.012 min  
 Lab File: BG059604.D  
 Acq: 2 Nov 2023 18:03

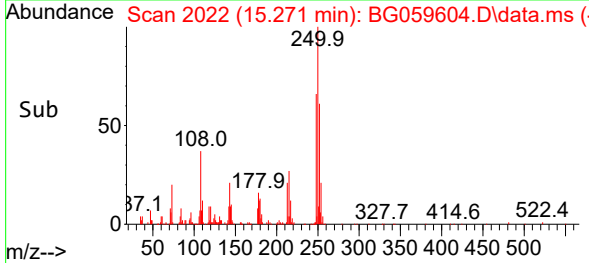
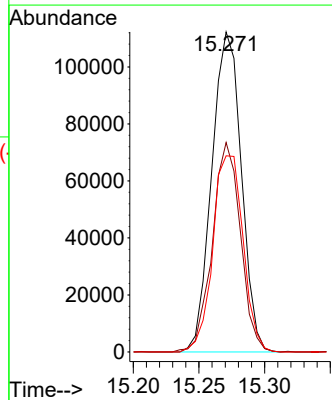
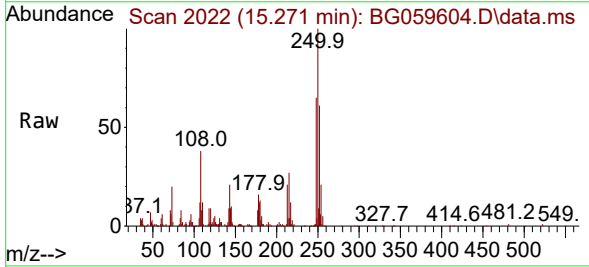
Instrument :  
 BNA\_G  
 ClientSampleId :  
 SSTD020471

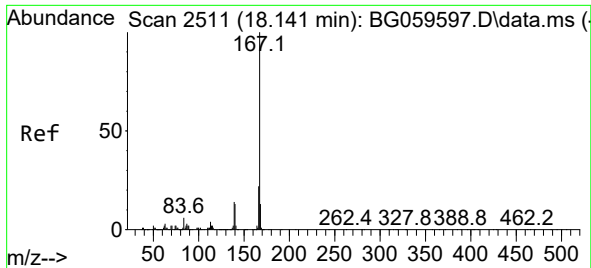
Tgt Ion	Resp	Lower	Upper
216	185319		
216	100		
214	80.3	70.2	105.2
218	48.5	39.9	59.9



#76  
 Pentachlorobenzene  
 Concen: 27.957 ng/uL  
 RT: 15.271 min Scan# 2022  
 Delta R.T. -0.012 min  
 Lab File: BG059604.D  
 Acq: 2 Nov 2023 18:03

Tgt Ion	Resp	Lower	Upper
250	175666		
250	100		
248	65.5	48.7	73.1
252	61.3	51.2	76.8





#77  
 Carbazole  
 Concen: 19.870 ng/ul  
 RT: 18.144 min Scan# 2511  
 Delta R.T. -0.006 min  
 Lab File: BG059604.D  
 Acq: 2 Nov 2023 18:03

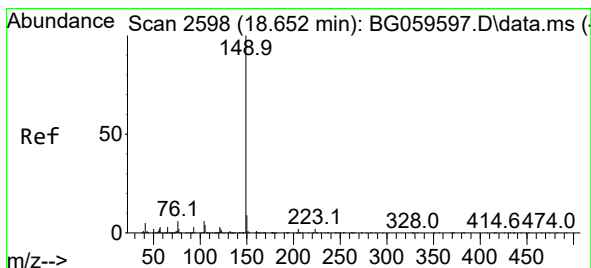
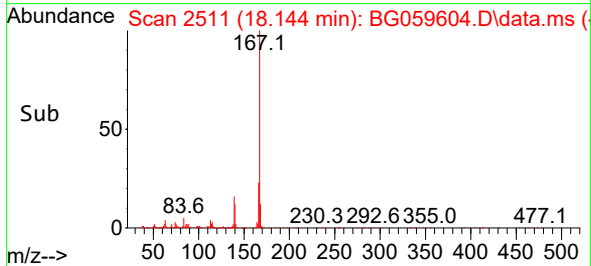
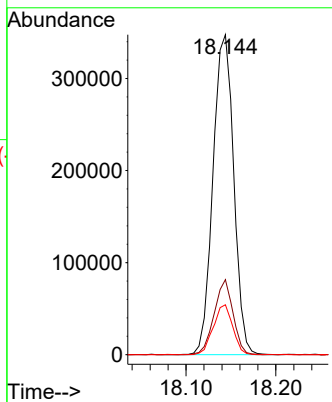
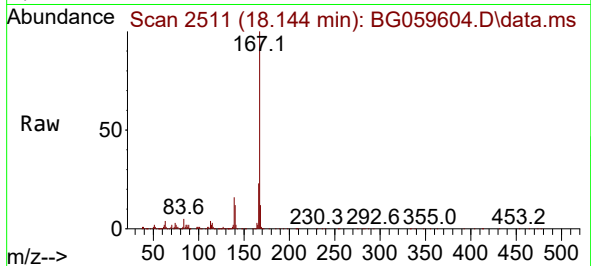
Instrument :

BNA\_G

ClientSampleId :

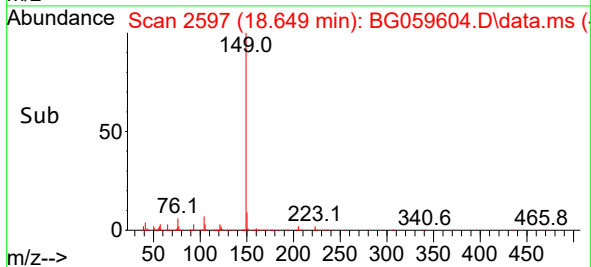
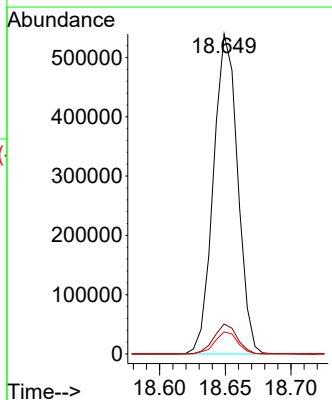
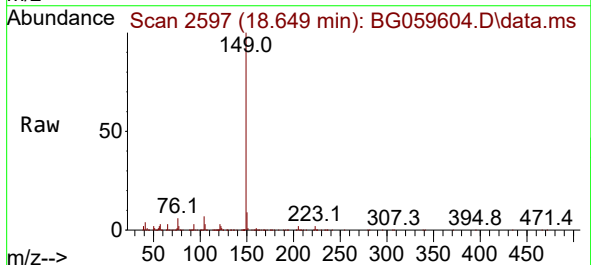
SSTD020471

Tgt Ion:167 Resp: 557130  
 Ion Ratio Lower Upper  
 167 100  
 166 23.5 19.4 29.2  
 139 15.6 11.7 17.5

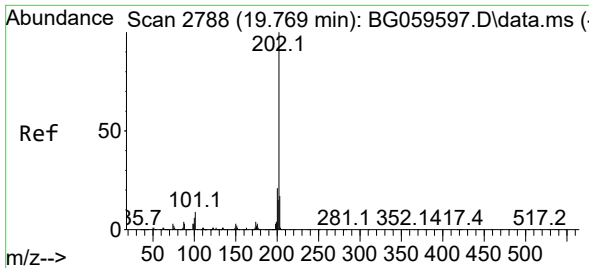


#78  
 Di-n-butylphthalate  
 Concen: 18.002 ng/ul  
 RT: 18.649 min Scan# 2597  
 Delta R.T. -0.018 min  
 Lab File: BG059604.D  
 Acq: 2 Nov 2023 18:03

Tgt Ion:149 Resp: 693516  
 Ion Ratio Lower Upper  
 149 100  
 150 9.3 7.5 11.3  
 104 6.9 5.3 7.9





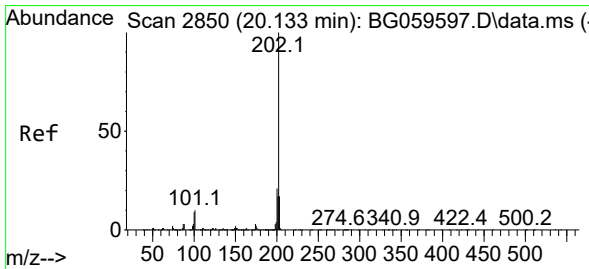
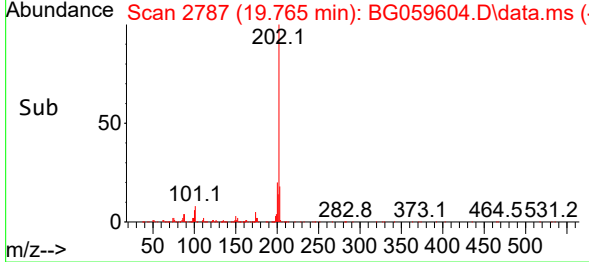
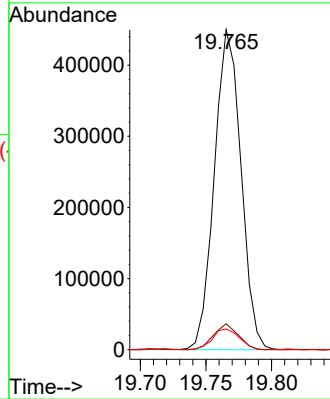
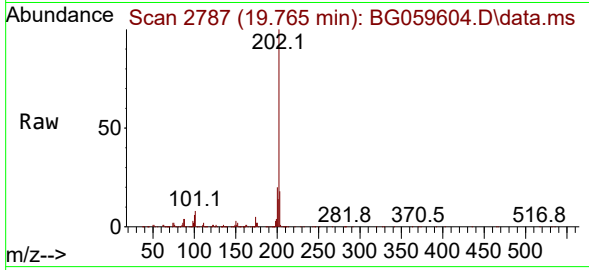


#80  
 Fluoranthene  
 Concen: 18.896 ng/u1  
 RT: 19.765 min Scan# 2787  
 Delta R.T. -0.012 min  
 Lab File: BG059604.D  
 Acq: 2 Nov 2023 18:03

Instrument : BNA\_G  
 ClientSampleId : SSTD020471

Tgt Ion:202 Resp: 633663

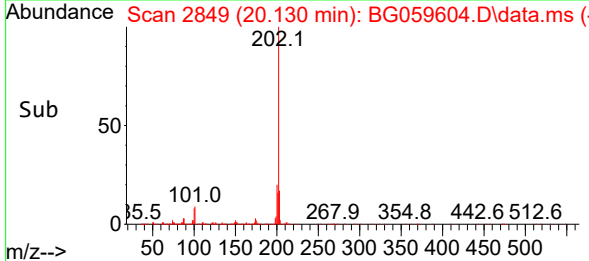
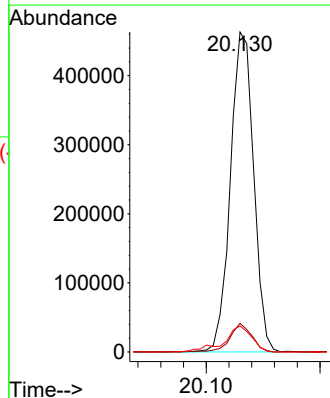
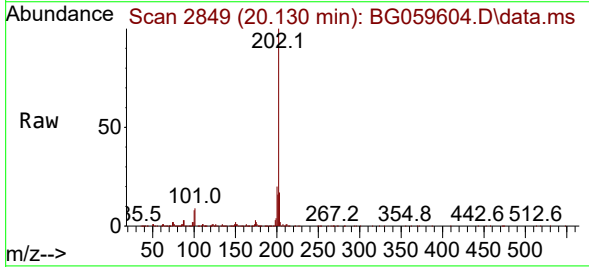
Ion	Ratio	Lower	Upper
202	100		
101	8.1	7.0	10.6
100	6.5	5.2	7.8

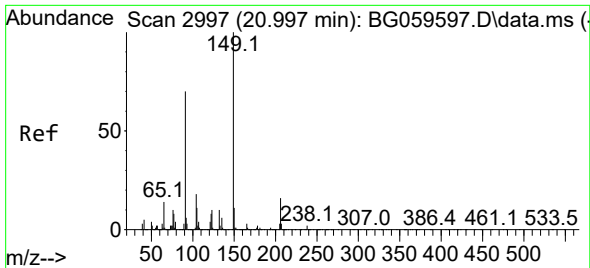


#82  
 Pyrene  
 Concen: 18.855 ng/u1  
 RT: 20.130 min Scan# 2849  
 Delta R.T. -0.012 min  
 Lab File: BG059604.D  
 Acq: 2 Nov 2023 18:03

Tgt Ion:202 Resp: 656777

Ion	Ratio	Lower	Upper
202	100		
101	9.0	7.9	11.9
100	8.2	7.9	11.9

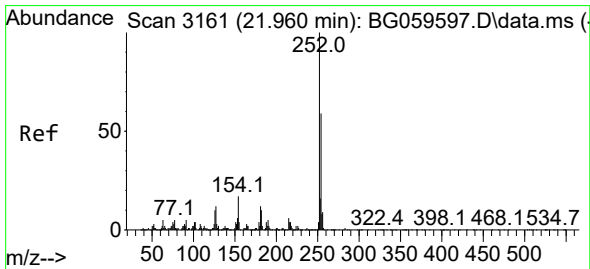
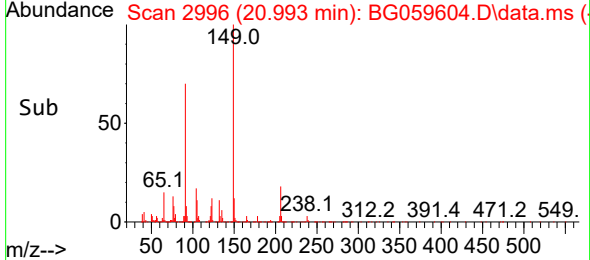
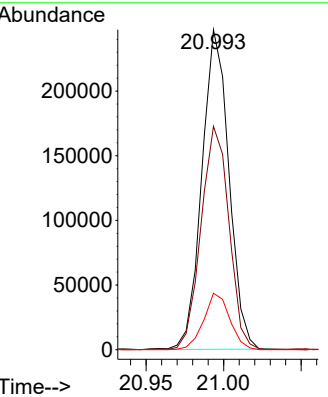
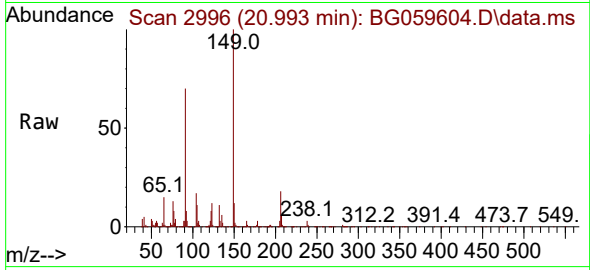




#83  
 Butylbenzylphthalate  
 Concen: 18.986 ng/ul  
 RT: 20.993 min Scan# 2996  
 Delta R.T. -0.024 min  
 Lab File: BG059604.D  
 Acq: 2 Nov 2023 18:03

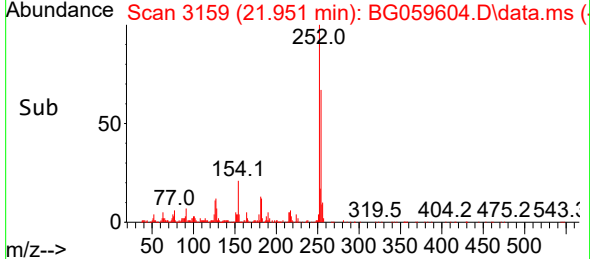
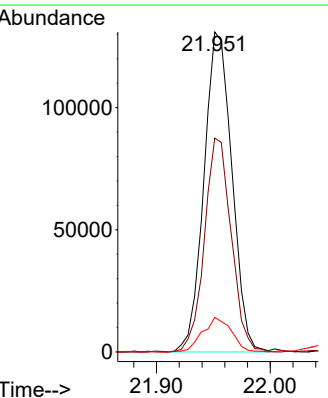
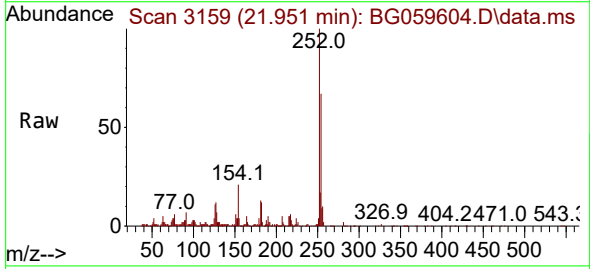
Instrument : BNA\_G  
 ClientSampleId : SSTD020471

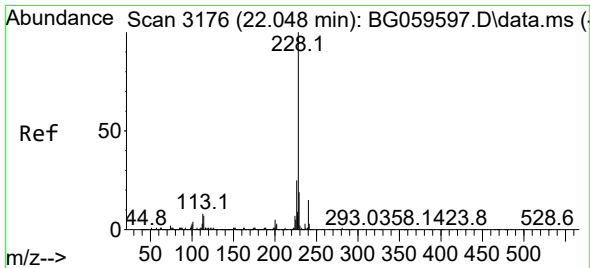
Tgt Ion	Resp	Lower	Upper
149	100		
91	69.8	52.2	78.2
206	17.6	15.1	22.7



#84  
 3,3'-Dichlorobenzidine  
 Concen: 21.794 ng/ul  
 RT: 21.951 min Scan# 3159  
 Delta R.T. -0.018 min  
 Lab File: BG059604.D  
 Acq: 2 Nov 2023 18:03

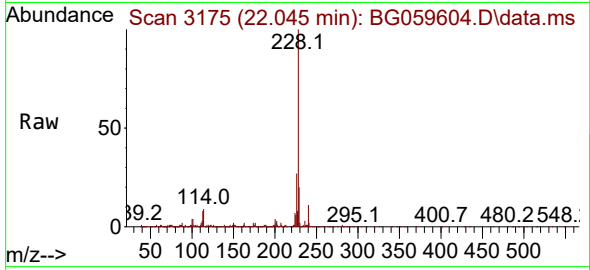
Tgt Ion	Resp	Lower	Upper
252	100		
254	66.8	48.9	73.3
126	10.8	11.5	17.3



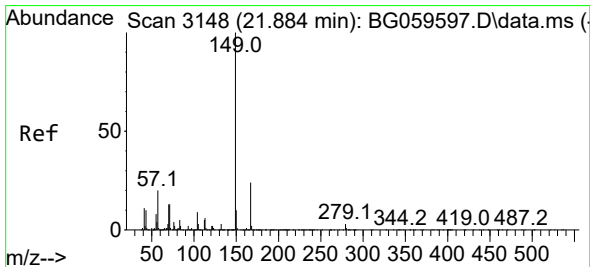
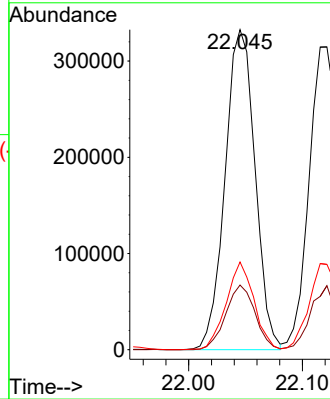
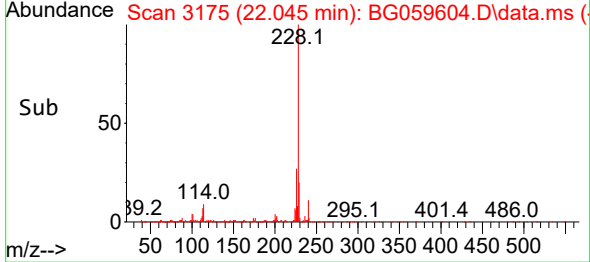


#85  
 Benzo(a)anthracene  
 Concen: 18.714 ng/ul  
 RT: 22.045 min Scan# 3175  
 Delta R.T. -0.012 min  
 Lab File: BG059604.D  
 Acq: 2 Nov 2023 18:03

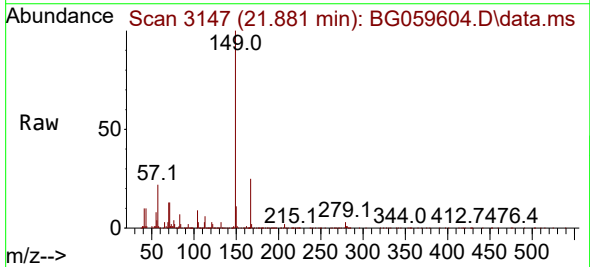
Instrument : BNA\_G  
 ClientSampleId : SSTD020471



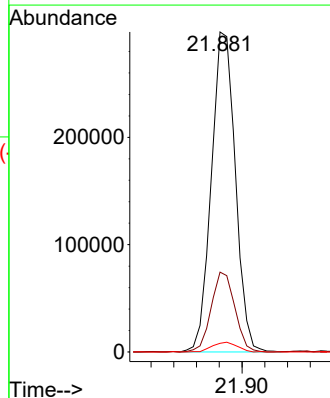
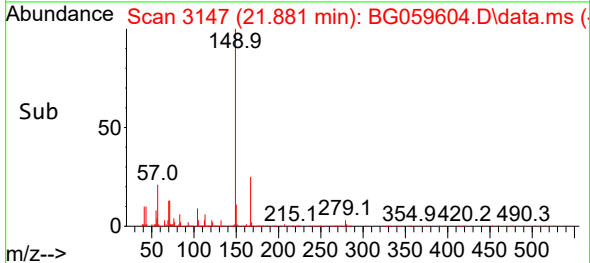
Tgt Ion:228 Resp: 609536  
 Ion Ratio Lower Upper  
 228 100  
 229 20.2 16.7 25.1  
 226 27.4 20.3 30.5

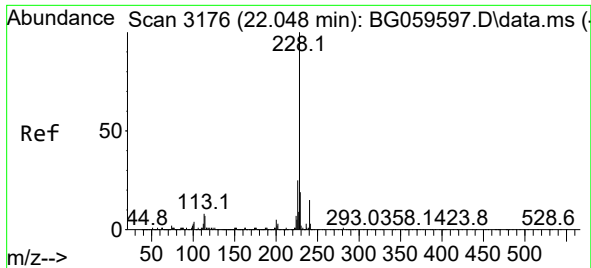


#86  
 Bis(2-ethylhexyl)phthalate  
 Concen: 18.651 ng/ul  
 RT: 21.881 min Scan# 3147  
 Delta R.T. -0.035 min  
 Lab File: BG059604.D  
 Acq: 2 Nov 2023 18:03



Tgt Ion:149 Resp: 437798  
 Ion Ratio Lower Upper  
 149 100  
 167 24.9 19.4 29.2  
 279 2.7 2.2 3.4



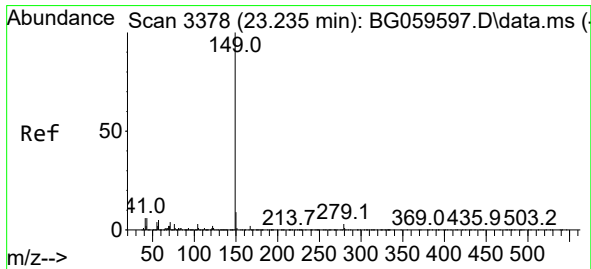
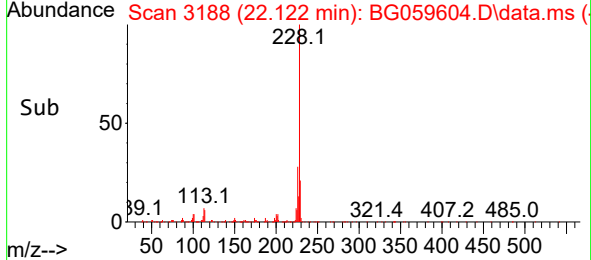
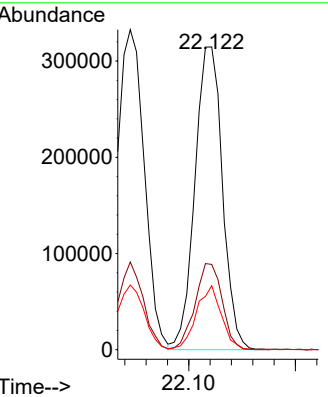
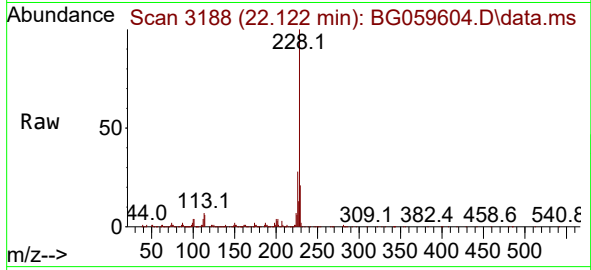


#87  
 Chrysene  
 Concen: 18.656 ng/uI  
 RT: 22.122 min Scan# 3176  
 Delta R.T. -0.012 min  
 Lab File: BG059604.D  
 Acq: 2 Nov 2023 18:03

Instrument : BNA\_G  
 Client Sample Id : SSTD020471

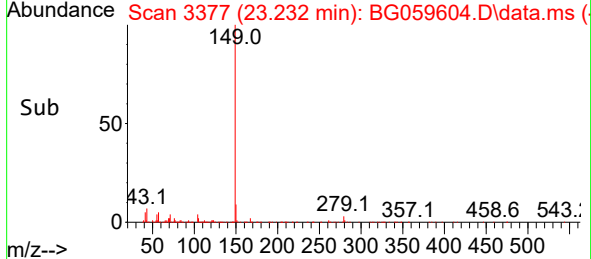
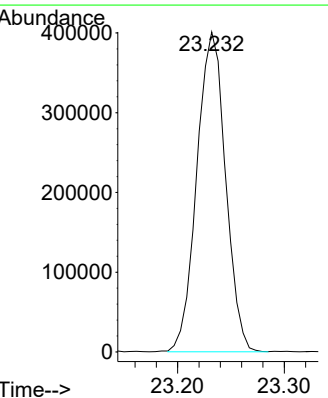
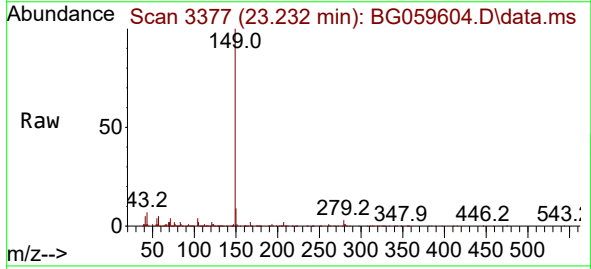
Tgt Ion:228 Resp: 565233

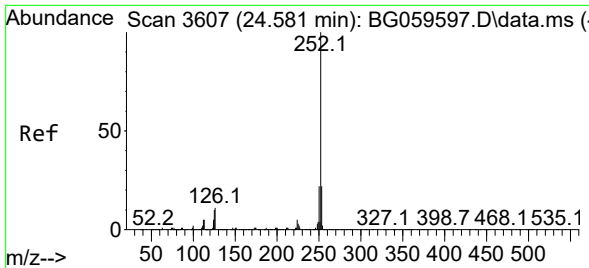
Ion	Ratio	Lower	Upper
228	100		
226	28.2	21.0	31.4
229	21.2	15.1	22.7



#89  
 Di-n-octyl phthalate  
 Concen: 17.523 ng/uI  
 RT: 23.232 min Scan# 3377  
 Delta R.T. -0.041 min  
 Lab File: BG059604.D  
 Acq: 2 Nov 2023 18:03

Tgt Ion:149 Resp: 749821



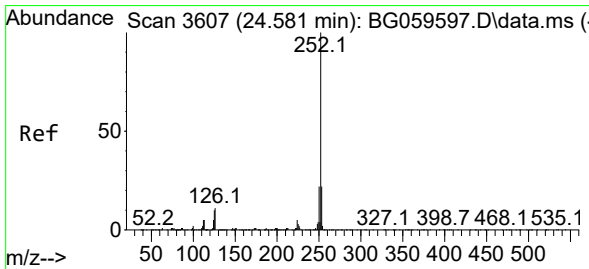
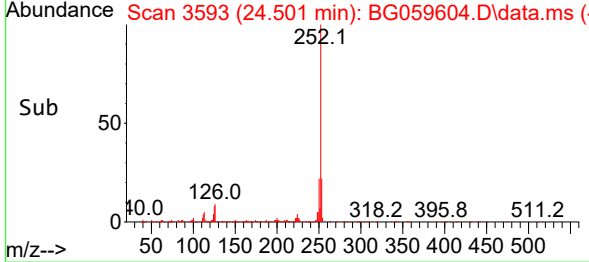
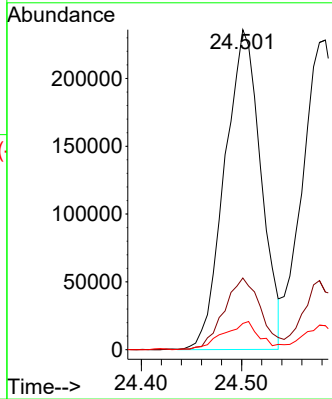
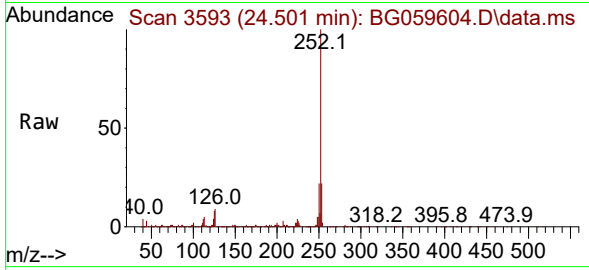


#90  
 Benzo(b)fluoranthene  
 Concen: 16.721 ng/ul  
 RT: 24.501 min Scan# 3593  
 Delta R.T. -0.024 min  
 Lab File: BG059604.D  
 Acq: 2 Nov 2023 18:03

Instrument : BNA\_G  
 ClientSampleId : SSTD020471

Tgt Ion:252 Resp: 592371

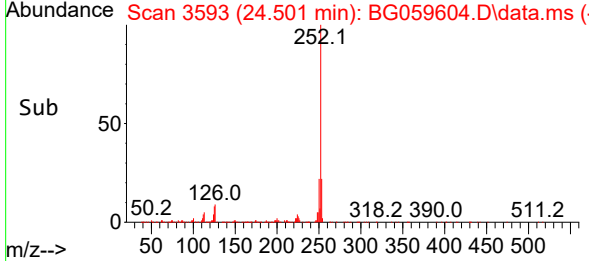
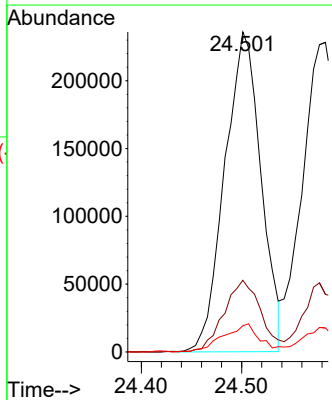
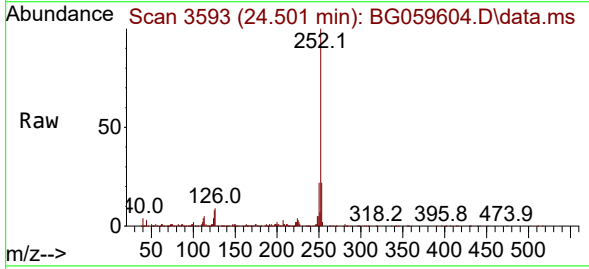
Ion	Ratio	Lower	Upper
252	100		
253	22.4	17.8	26.8
125	8.2	8.6	13.0

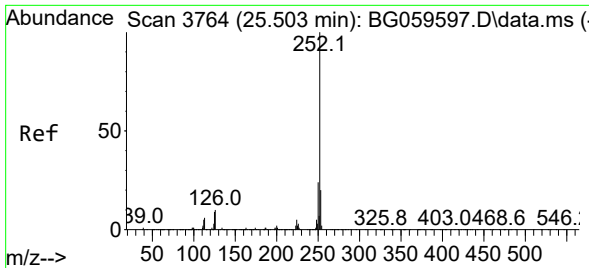


#91  
 Benzo(k)fluoranthene  
 Concen: 16.740 ng/ul  
 RT: 24.501 min Scan# 3593  
 Delta R.T. -0.100 min  
 Lab File: BG059604.D  
 Acq: 2 Nov 2023 18:03

Tgt Ion:252 Resp: 592371

Ion	Ratio	Lower	Upper
252	100		
253	22.4	17.9	26.9
125	8.2	7.9	11.9



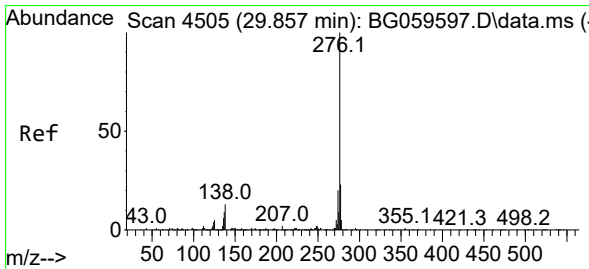
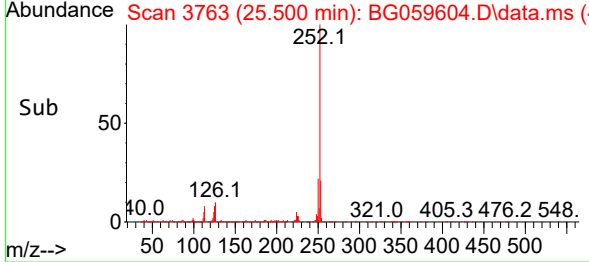
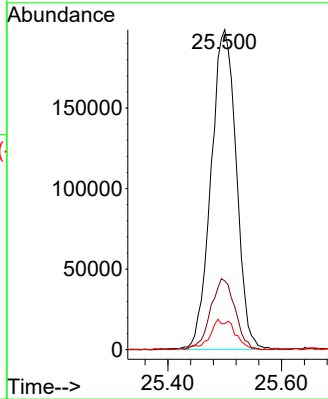
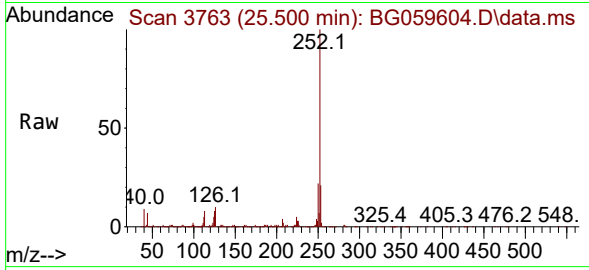


#93  
 Benzo(a)pyrene  
 Concen: 18.262 ng/uI  
 RT: 25.500 min Scan# 31  
 Delta R.T. -0.018 min  
 Lab File: BG059604.D  
 Acq: 2 Nov 2023 18:03

Instrument : BNA\_G  
 ClientSampleId : SSTD020471

Tgt Ion:252 Resp: 611490

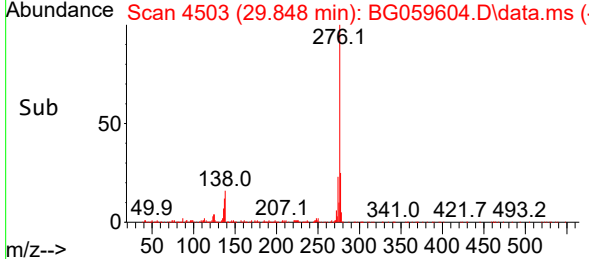
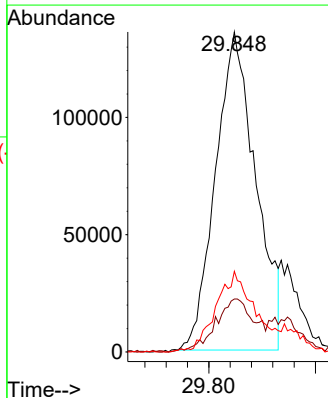
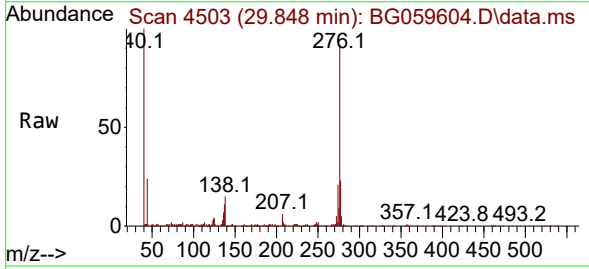
Ion	Ratio	Lower	Upper
252	100		
253	21.5	18.5	27.7
125	8.2	7.6	11.4

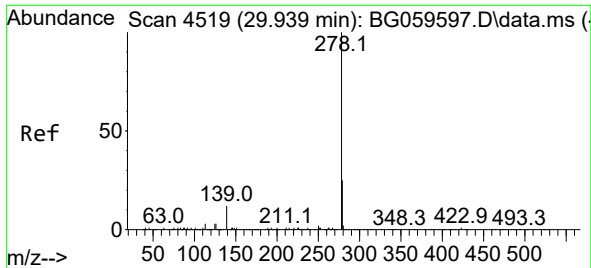


#94  
 Indeno(1,2,3-cd)pyrene  
 Concen: 16.752 ng/uI  
 RT: 29.848 min Scan# 4503  
 Delta R.T. -0.041 min  
 Lab File: BG059604.D  
 Acq: 2 Nov 2023 18:03

Tgt Ion:276 Resp: 710946

Ion	Ratio	Lower	Upper
276	100		
138	16.6	15.3	22.9
277	25.2	16.4	24.6#



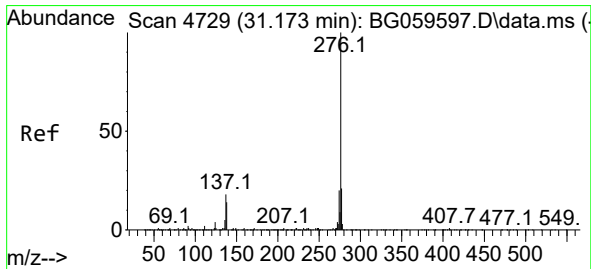
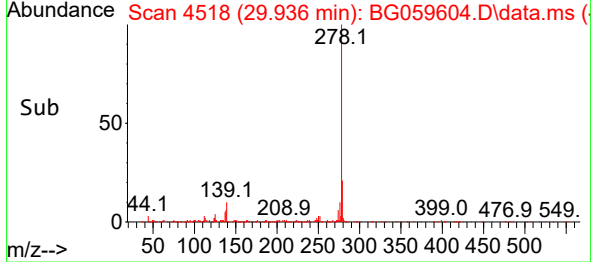
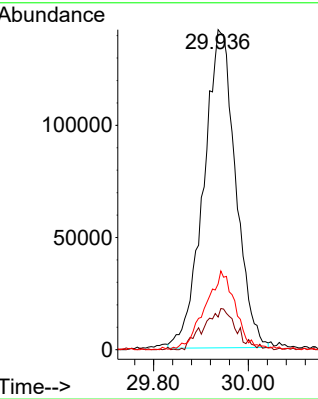
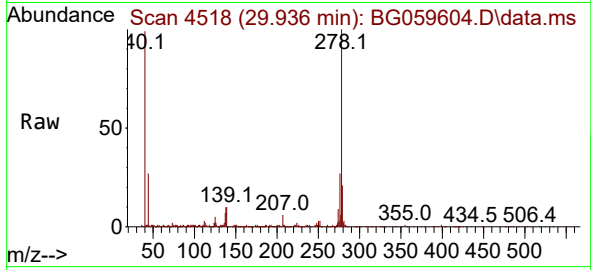


#95  
 Dibenzo(a,h)anthracene  
 Concen: 18.956 ng/ul  
 RT: 29.936 min Scan# 4519  
 Delta R.T. -0.047 min  
 Lab File: BG059604.D  
 Acq: 2 Nov 2023 18:03

Instrument : BNA\_G  
 ClientSampleId : SSTD020471

Tgt Ion:278 Resp: 664439

Ion	Ratio	Lower	Upper
278	100		
139	10.2	11.0	16.6#
279	20.6	18.3	27.5



#96  
 Benzo(g,h,i)perylene  
 Concen: 18.389 ng/ul  
 RT: 31.170 min Scan# 4728  
 Delta R.T. -0.047 min  
 Lab File: BG059604.D  
 Acq: 2 Nov 2023 18:03

Tgt Ion:276 Resp: 638756

Ion	Ratio	Lower	Upper
276	100		
138	23.5	16.2	24.2
277	23.4	18.2	27.4

