

Data Path : Z:\SVOASRV\HPCHEM1\BNA G\DATA\BG110619\  
 Data File : BG043535.D  
 Acq On : 7 Nov 2019 00:40  
 Operator : JU  
 Sample : K5671-01 2X  
 Misc :  
 ALS Vial : 17 Sample Multiplier: 1

**Instrument :**  
 BNA\_G  
**ClientSampleId :**  
 OR-02-110519

**Manual Integrations**  
**APPROVED**  
 Sohil  
 11/8/2019 3:30:00 PM

Quant Time: Nov 07 02:52:46 2019  
 Quant Method : Z:\SVOASRV\HPCHEM1\BNA G\METHODS\8270-BG102119.M  
 Quant Title : ASP BNA STANDARDS FOR 5 POINT CALIBRATION  
 QLast Update : Mon Nov 04 15:22:15 2019  
 Response via : Initial Calibration

Internal Standards	R.T.	QIon	Response	Conc	Units	Dev(Min)
1) 1,4-Dichlorobenzene-d4	8.01	152	44462	20.00	ng	0.00
21) Naphthalene-d8	10.81	136	169894	20.00	ng	0.00
39) Acenaphthene-d10	14.64	164	112074	20.00	ng	0.00
64) Phenanthrene-d10	17.39	188	235634	20.00	ng	0.00
76) Chrysene-d12	21.65	240	242759	20.00	ng	0.00
87) Perylene-d12	24.86	264	294534	20.00	ng	0.00
System Monitoring Compounds						
5) 2-Fluorophenol	5.60	112	111941	46.14	ng	0.00
7) Phenol-d6	7.19	99	152390	43.65	ng	0.00
23) Nitrobenzene-d5	9.17	82	92210	27.98	ng	0.00
42) 2,4,6-Tribromophenol	16.13	330	73748	34.58	ng	0.00
45) 2-Fluorobiphenyl	13.26	172	247070	30.46	ng	0.00
79) Terphenyl-d14	20.00	244	399787	30.90	ng	0.00
Target Compounds						
50) Dimethylphthalate	14.09	163	32203	3.710	ng	99
71) Phenanthrene	17.43	178	158610	13.145	ng	99
72) Anthracene	17.52	178	43068	3.567	ng	98
75) Fluoranthene	19.44	202	358792	22.808	ng	98
78) Pyrene	19.80	202	359436	23.920	ng	99
81) Benzo(a)anthracene	21.64	228	209548	13.780	ng	99
83) Chrysene	21.70	228	188515	12.477	ng	97
86) Indeno(1,2,3-cd)pyrene	28.50	276	127567	6.726	ng	# 96
88) Benzo(b)fluoranthene	23.84	252	255825	15.336	ng	# 94
89) Benzo(k)fluoranthene	23.89	252	77260m	4.601	ng	
90) Benzo(a)pyrene	24.70	252	199434	12.520	ng	99
91) Dibenzo(a,h)anthracene	28.53	278	34551m	2.121	ng	
92) Benzo(a,h,i)perylene	29.63	276	134748	8.384	ng	96

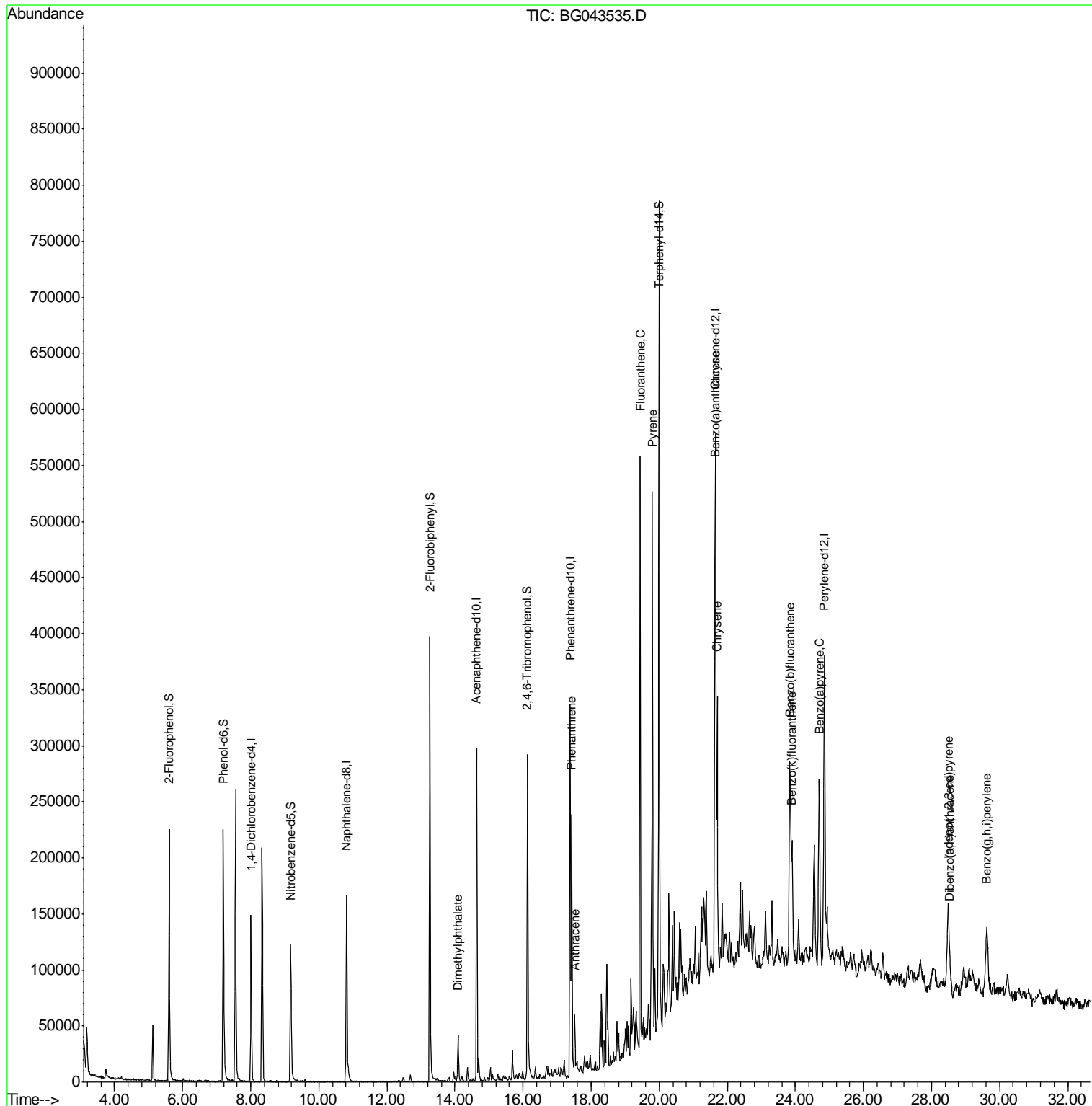
(#) = qualifier out of range (m) = manual integration (+) = signals summed

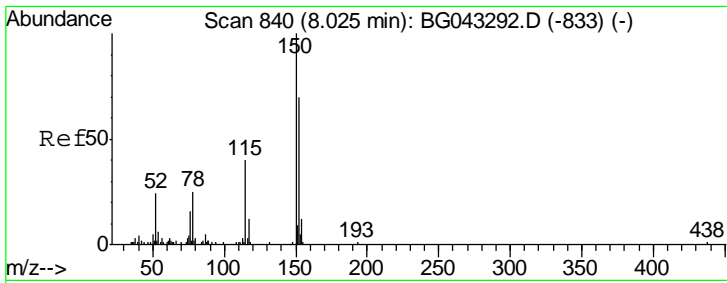
Data Path : Z:\SVOASRV\HPCHEM1\BNA G\DATA\BG110619\  
 Data File : BG043535.D  
 Acq On : 7 Nov 2019 00:40  
 Operator : JU  
 Sample : K5671-01 2X  
 Misc :  
 ALS Vial : 17 Sample Multiplier: 1

**Instrument :**  
 BNA\_G  
**Client Sampled :**  
 OR-02-110519

**Manual Integrations**  
**APPROVED**  
 Sohil  
 11/8/2019 3:30:00 PM

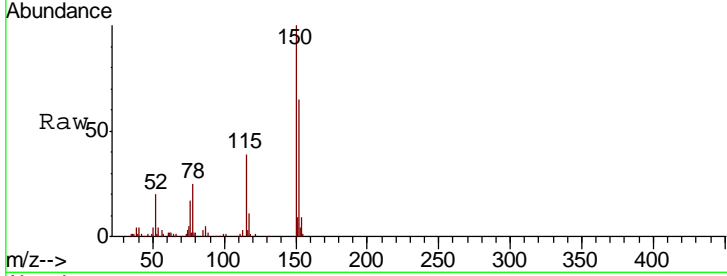
Quant Time: Nov 07 02:52:46 2019  
 Quant Method : Z:\SVOASRV\HPCHEM1\BNA G\METHODS\8270-BG102119.M  
 Quant Title : ASP BNA STANDARDS FOR 5 POINT CALIBRATION  
 QLast Update : Mon Nov 04 15:22:15 2019  
 Response via : Initial Calibration





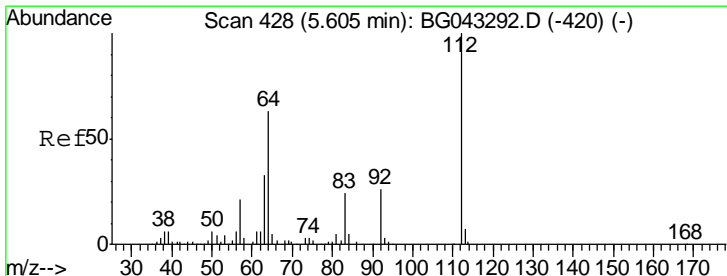
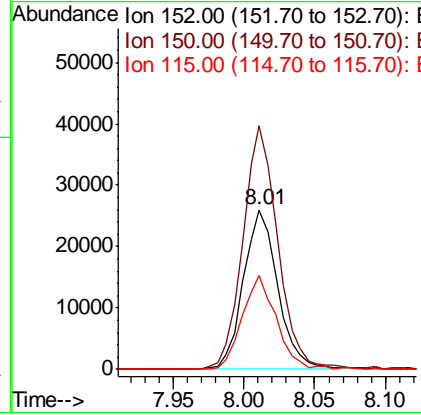
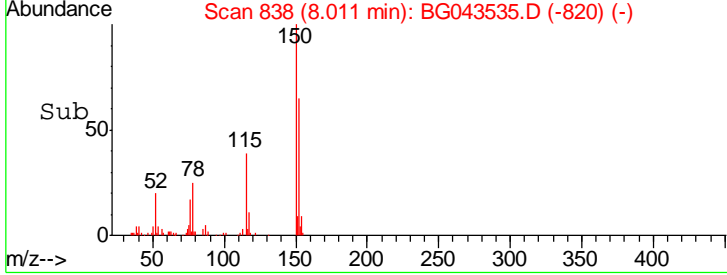
#1  
 1,4-Dichlorobenzene-d4  
 Concen: 20.000 ng  
 RT: 8.01 min Scan# 838  
 Delta R.T. 0.00 min  
 Lab File: BG043535.D  
 Acq: 7 Nov 2019 00:40

**Instrument :**  
 BNA\_G  
**ClientSampled :**  
 OR-02-110519

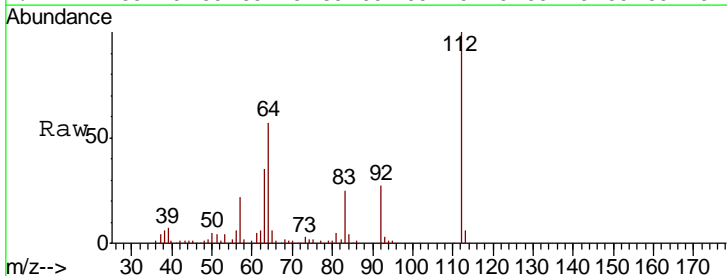


Tgt Ion	Resp	Lower	Upper
152	44462		
150	100	129.4	194.0
115	153.0	48.8	73.2

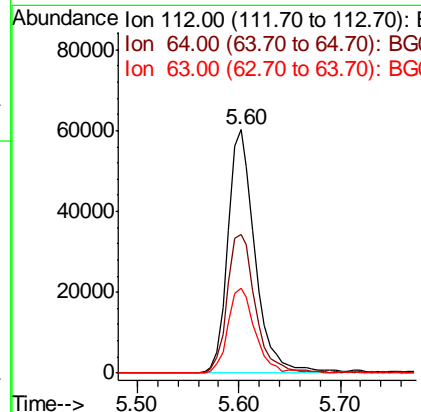
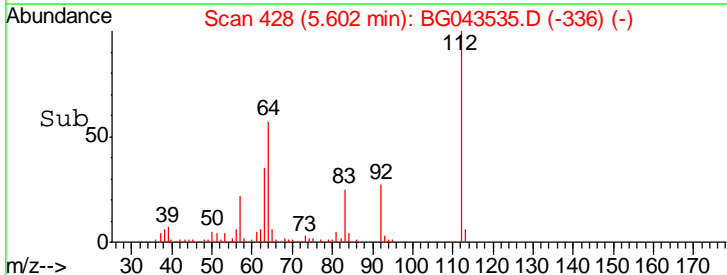
**Manual Integrations**  
**APPROVED**  
 Sohil  
 11/8/2019 3:30:00 PM

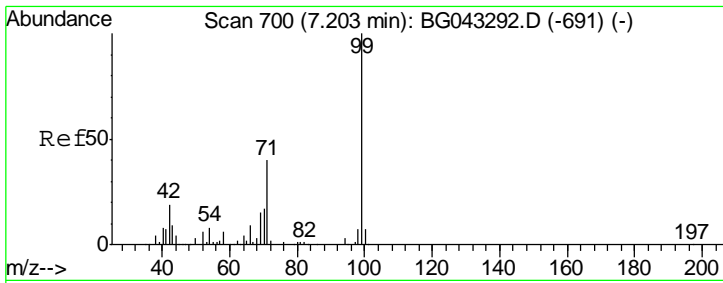


#5  
 2-Fluorophenol  
 Concen: 46.135 ng  
 RT: 5.60 min Scan# 428  
 Delta R.T. 0.01 min  
 Lab File: BG043535.D  
 Acq: 7 Nov 2019 00:40



Tgt Ion	Resp	Lower	Upper
112	111941		
64	100	50.0	75.0
63	57.1	26.6	40.0





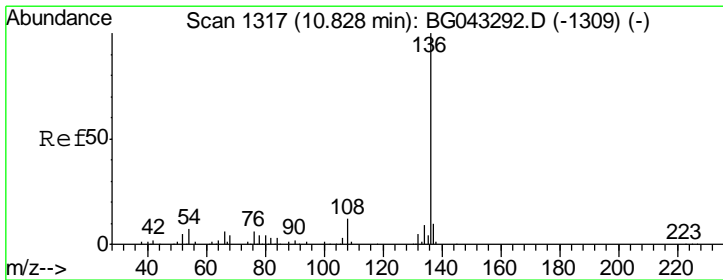
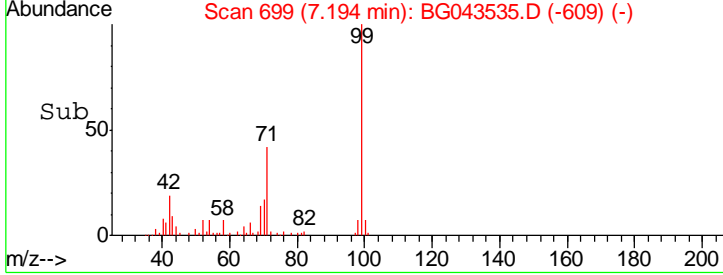
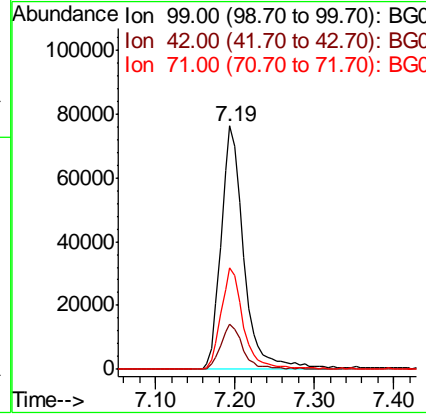
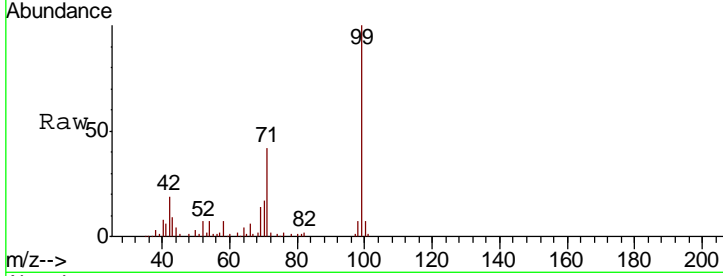
#7  
 Phenol-d6  
 Concen: 43.653 ng  
 RT: 7.19 min Scan# 699  
 Delta R.T. -0.00 min  
 Lab File: BG043535.D  
 Acq: 7 Nov 2019 00:40

**Instrument :**  
 BNA\_G  
**ClientSampled :**  
 OR-02-110519

Tgt Ion	Resp	Lower	Upper
99	152390		
42	18.6	14.6	21.8
71	41.8	32.5	48.7

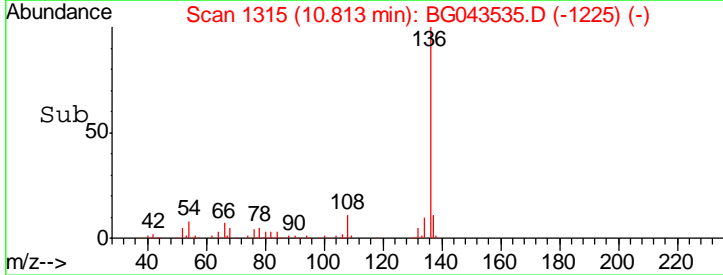
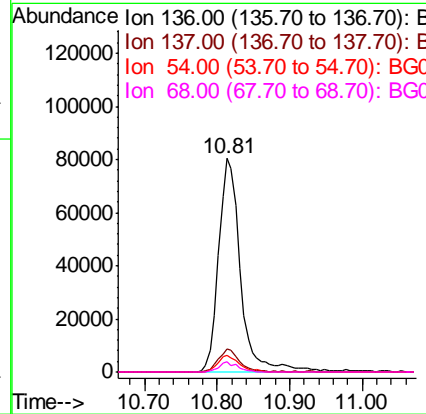
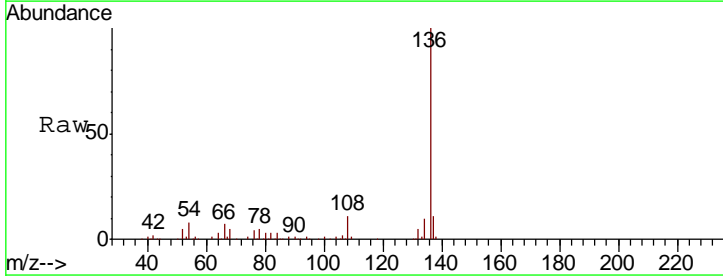
**Manual Integrations**  
**APPROVED**

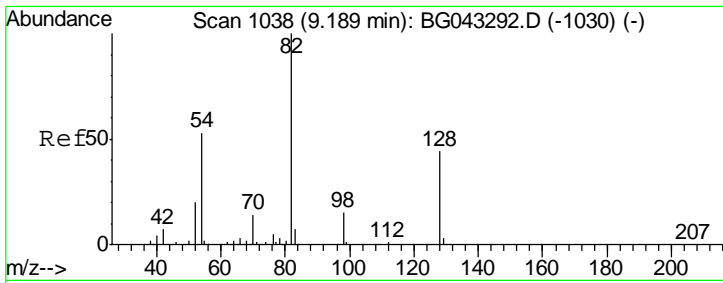
Sohil  
 11/8/2019 3:30:00 PM



#21  
 Naphthalene-d8  
 Concen: 20.000 ng  
 RT: 10.81 min Scan# 1315  
 Delta R.T. -0.00 min  
 Lab File: BG043535.D  
 Acq: 7 Nov 2019 00:40

Tgt Ion	Resp	Lower	Upper
136	169894		
137	10.5	8.7	13.1
54	7.7	5.4	8.2
68	5.0	3.0	4.4#



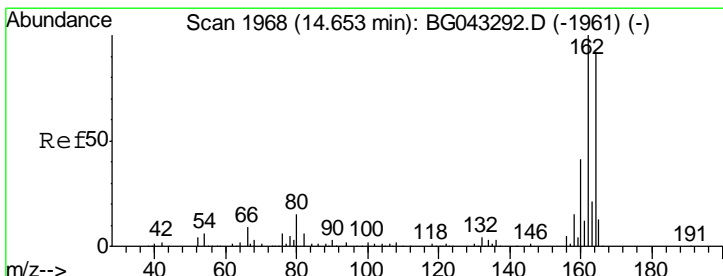
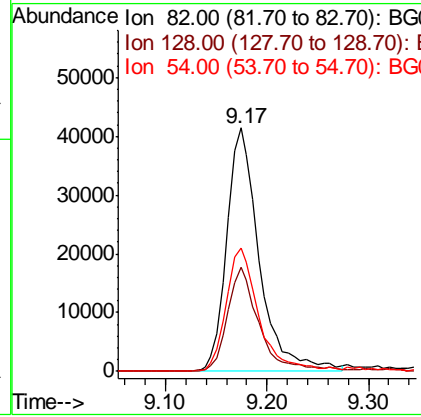
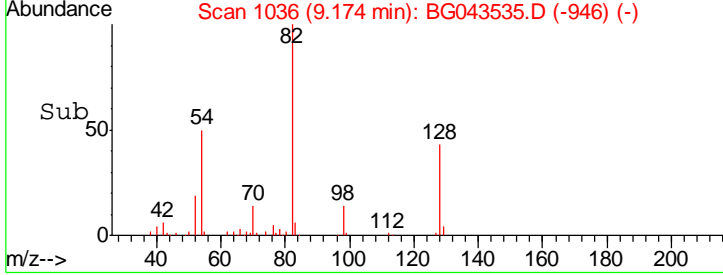
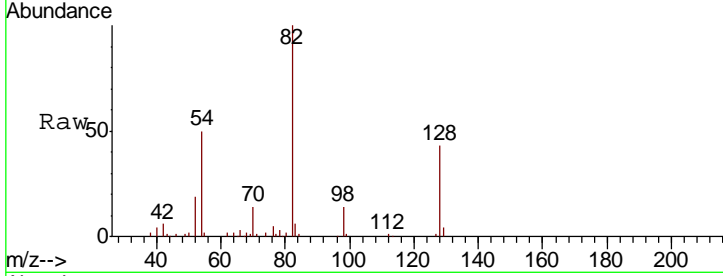


#23  
 Nitrobenzene-d5  
 Concen: 27.981 ng  
 RT: 9.17 min Scan# 1036  
 Delta R.T. -0.00 min  
 Lab File: BG043535.D  
 Acq: 7 Nov 2019 00:40

**Instrument :**  
 BNA\_G  
**ClientSampled :**  
 OR-02-110519

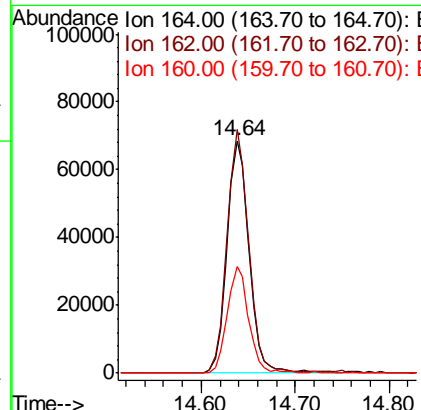
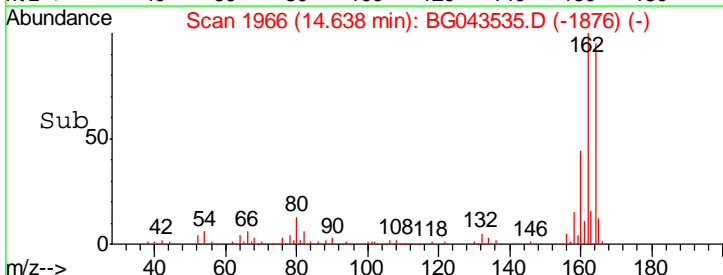
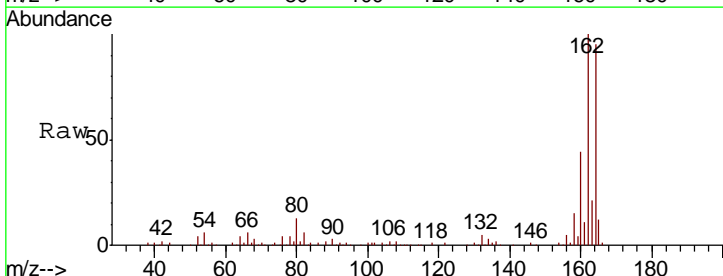
Tgt Ion	Resp	Lower	Upper
82	92210		
128	42.9	35.0	52.6
54	50.5	40.2	60.2

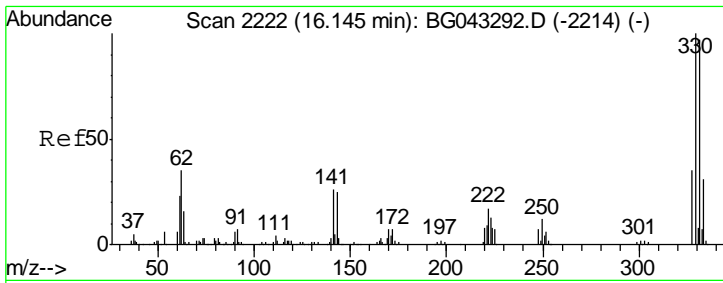
**Manual Integrations**  
**APPROVED**  
 Sohil  
 11/8/2019 3:30:00 PM



#39  
 Acenaphthene-d10  
 Concen: 20.000 ng  
 RT: 14.64 min Scan# 1966  
 Delta R.T. -0.00 min  
 Lab File: BG043535.D  
 Acq: 7 Nov 2019 00:40

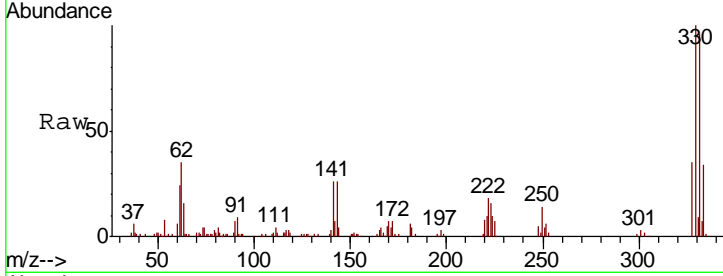
Tgt Ion	Resp	Lower	Upper
164	112074		
162	104.7	83.5	125.3
160	46.1	36.5	54.7





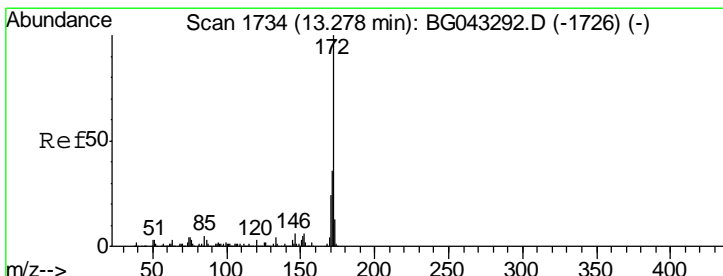
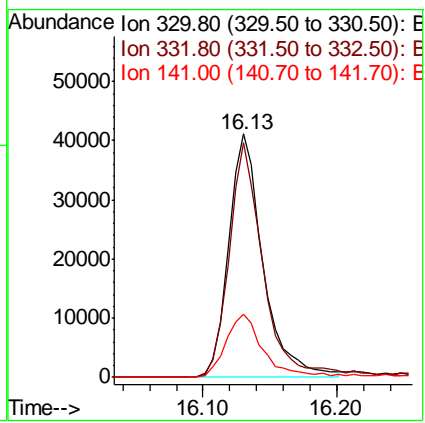
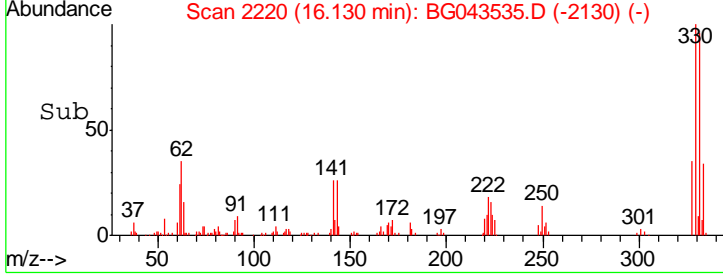
#42  
 2,4,6-Tribromophenol  
 Concen: 34.578 ng  
 RT: 16.13 min Scan# 2220  
 Delta R.T. -0.00 min  
 Lab File: BG043535.D  
 Acq: 7 Nov 2019 00:40

**Instrument :**  
 BNA\_G  
**ClientSampled :**  
 OR-02-110519

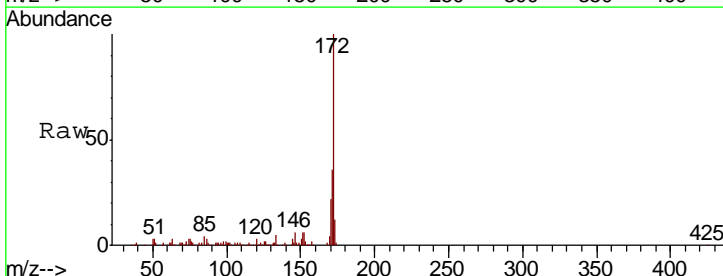


Tgt Ion	Resp	Lower	Upper
330	100		
332	94.7	77.4	116.0
141	28.7	22.8	34.2

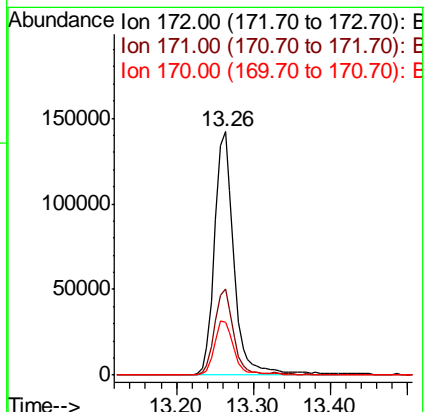
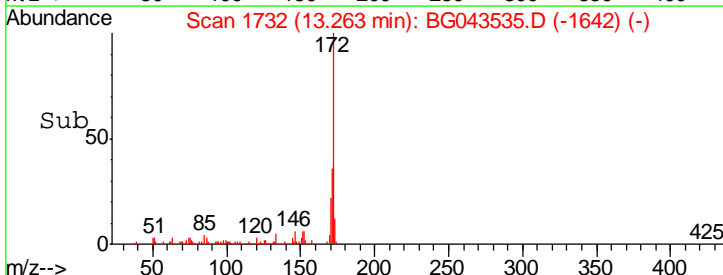
**Manual Integrations**  
**APPROVED**  
 Sohil  
 11/8/2019 3:30:00 PM

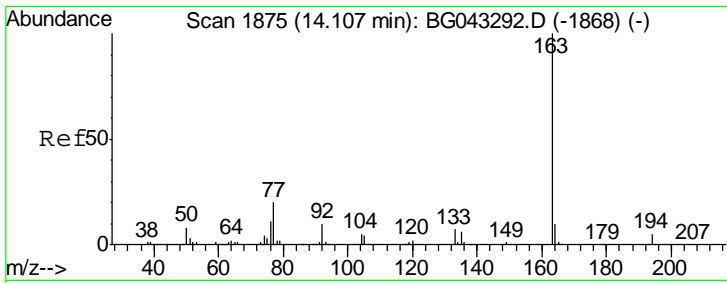


#45  
 2-Fluorobiphenyl  
 Concen: 30.462 ng  
 RT: 13.26 min Scan# 1732  
 Delta R.T. -0.00 min  
 Lab File: BG043535.D  
 Acq: 7 Nov 2019 00:40



Tgt Ion	Resp	Lower	Upper
172	100		
171	35.7	28.9	43.3
170	21.9	18.5	27.7





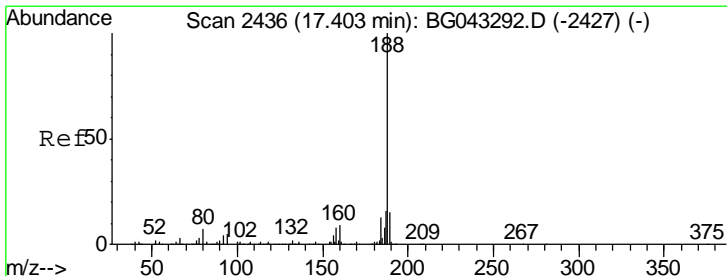
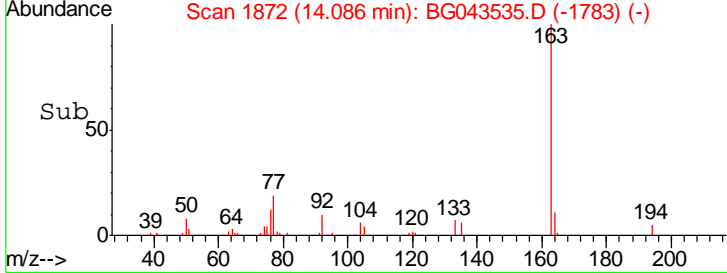
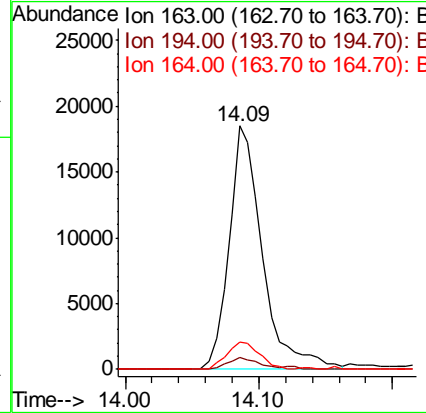
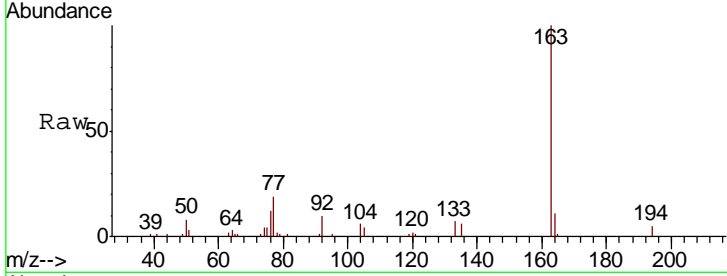
#50  
 Dimethylphthalate  
 Concen: 3.710 ng  
 RT: 14.09 min Scan# 1872  
 Delta R.T. -0.01 min  
 Lab File: BG043535.D  
 Acq: 7 Nov 2019 00:40

Instrument :  
 BNA\_G  
 ClientSampled :  
 OR-02-110519

Tgt Ion	Resp	Lower	Upper
163	32203		
194	5.1	3.8	5.6
164	11.3	8.9	13.3

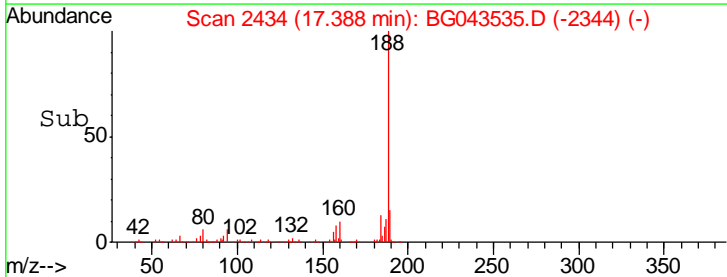
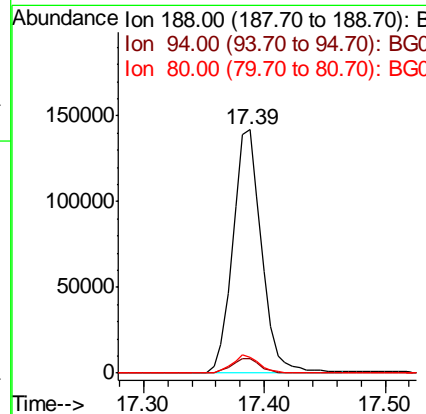
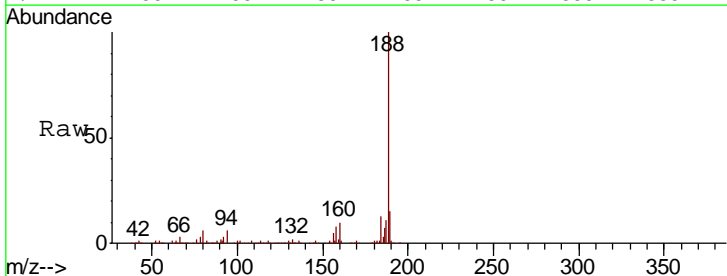
Manual Integrations  
 APPROVED

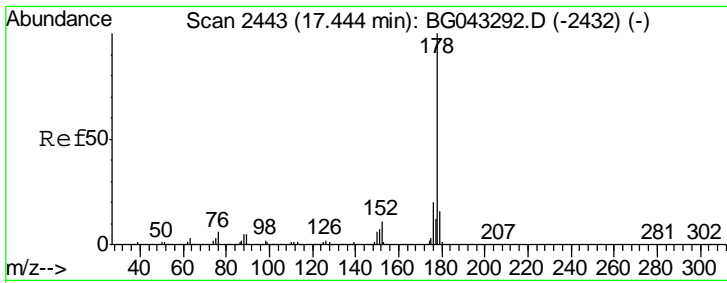
Sohil  
 11/8/2019 3:30:00 PM



#64  
 Phenanthrene-d10  
 Concen: 20.000 ng  
 RT: 17.39 min Scan# 2434  
 Delta R.T. -0.00 min  
 Lab File: BG043535.D  
 Acq: 7 Nov 2019 00:40

Tgt Ion	Resp	Lower	Upper
188	235634		
94	6.1	4.2	6.4
80	6.4	4.5	6.7





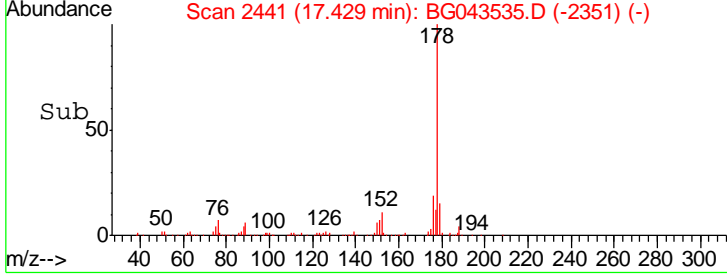
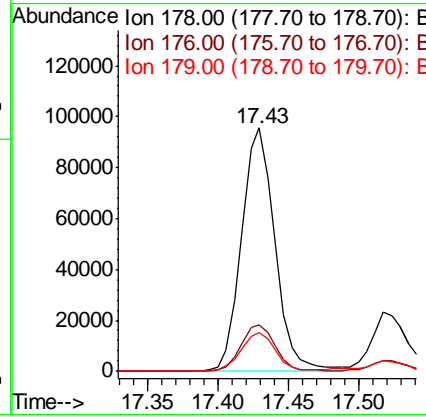
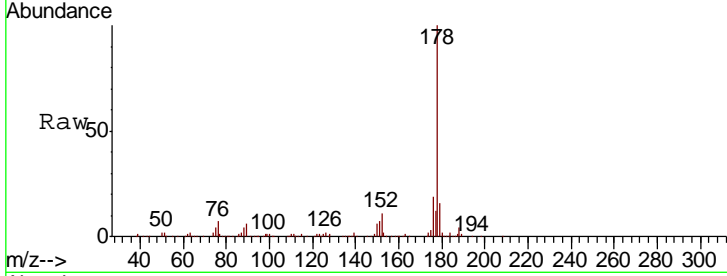
#71  
 Phenanthrene  
 Concen: 13.145 ng  
 RT: 17.43 min Scan# 2441  
 Delta R.T. -0.00 min  
 Lab File: BG043535.D  
 Acq: 7 Nov 2019 00:40

**Instrument :**  
 BNA\_G  
**ClientSampled :**  
 OR-02-110519

Tgt Ion	Resp	Lower	Upper
178	158610		
176	19.1	15.4	23.0
179	15.8	13.0	19.6

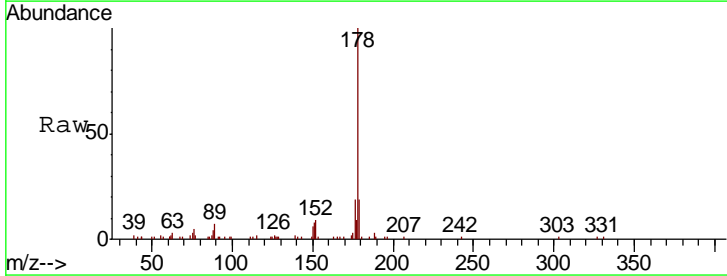
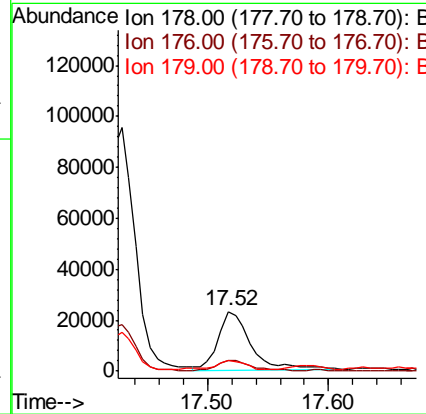
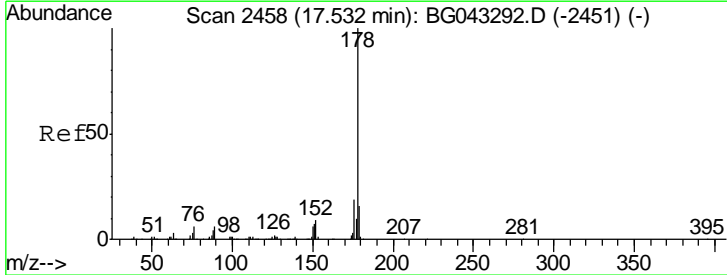
**Manual Integrations**  
**APPROVED**

Sohil  
 11/8/2019 3:30:00 PM

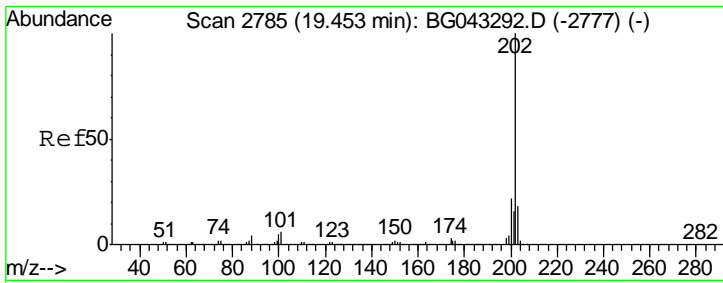


#72  
 Anthracene  
 Concen: 3.567 ng  
 RT: 17.52 min Scan# 2456  
 Delta R.T. -0.00 min  
 Lab File: BG043535.D  
 Acq: 7 Nov 2019 00:40

Tgt Ion	Resp	Lower	Upper
178	43068		
176	18.8	15.5	23.3
179	18.6	13.7	20.5





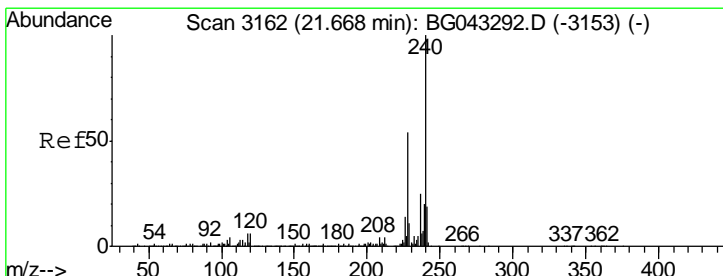
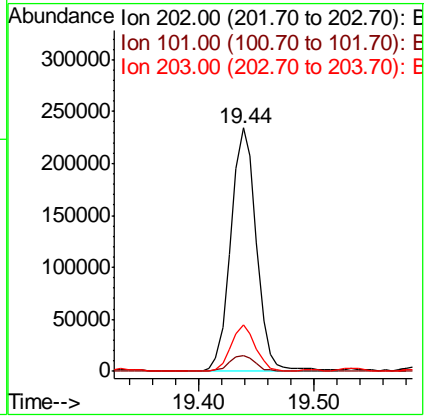
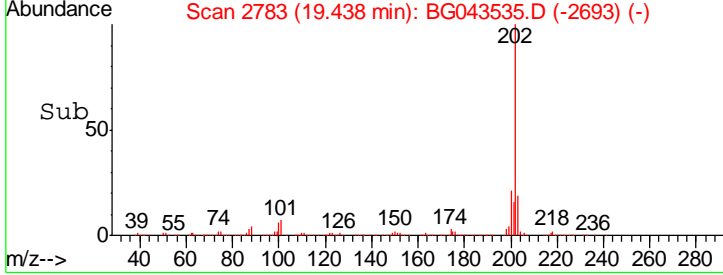
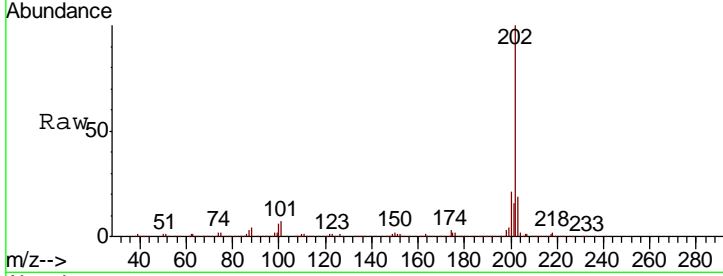


#75  
 Fluoranthene  
 Concen: 22.808 ng  
 RT: 19.44 min Scan# 2783  
 Delta R.T. -0.00 min  
 Lab File: BG043535.D  
 Acq: 7 Nov 2019 00:40

**Instrument :**  
 BNA\_G  
**ClientSampled :**  
 OR-02-110519

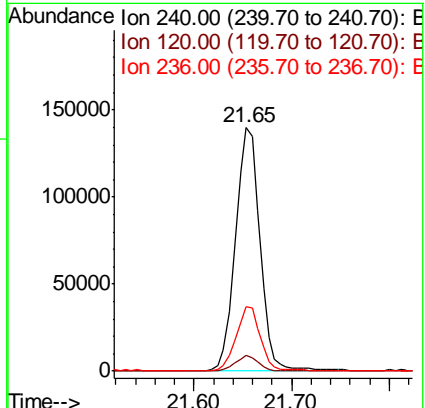
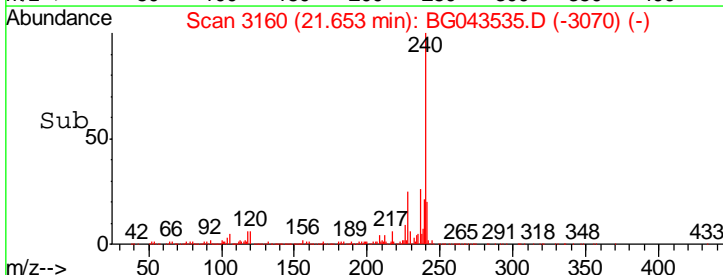
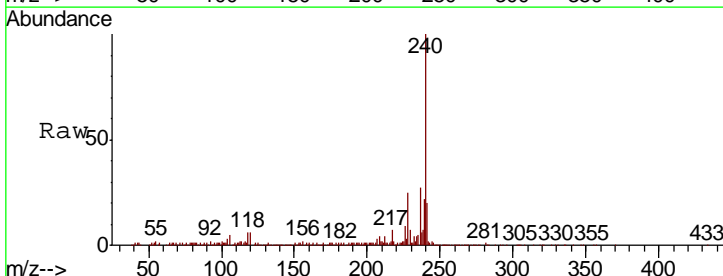
Tgt Ion	Resp	Lower	Upper
202	358792		
101	6.5	0.0	26.3
203	19.2	0.0	37.9

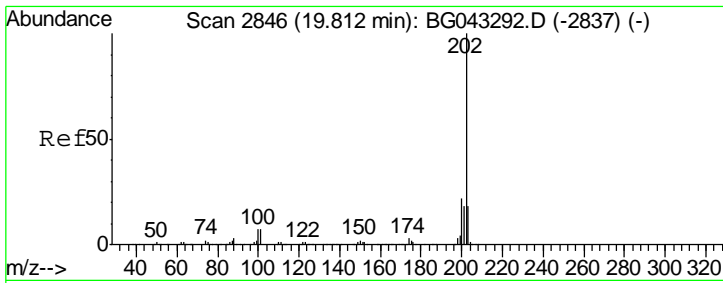
**Manual Integrations**  
**APPROVED**  
 Sohil  
 11/8/2019 3:30:00 PM



#76  
 Chrysene-d12  
 Concen: 20.000 ng  
 RT: 21.65 min Scan# 3160  
 Delta R.T. -0.00 min  
 Lab File: BG043535.D  
 Acq: 7 Nov 2019 00:40

Tgt Ion	Resp	Lower	Upper
240	242759		
120	6.3	4.6	6.8
236	26.6	19.8	29.8



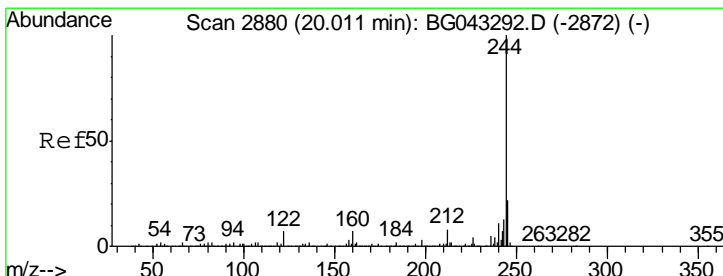
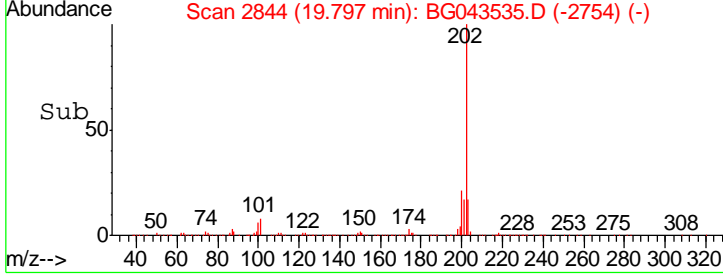
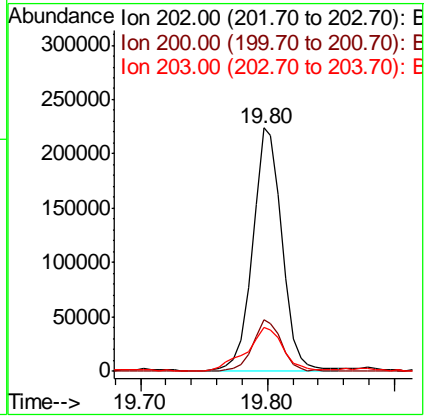
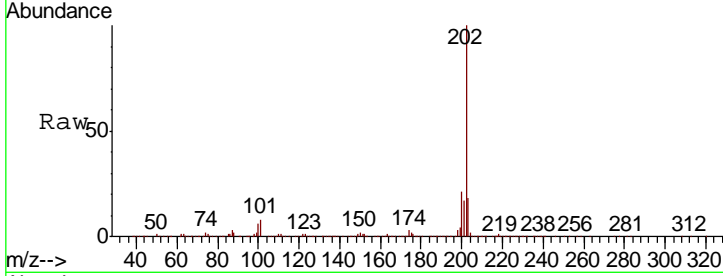


#78  
 Pyrene  
 Concen: 23.920 ng  
 RT: 19.80 min Scan# 2844  
 Delta R.T. -0.00 min  
 Lab File: BG043535.D  
 Acq: 7 Nov 2019 00:40

Instrument :  
 BNA\_G  
 ClientSampled :  
 OR-02-110519

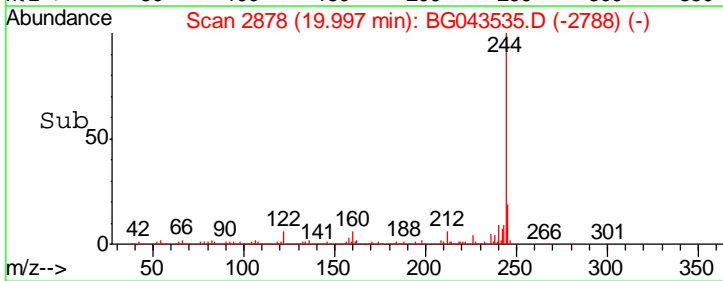
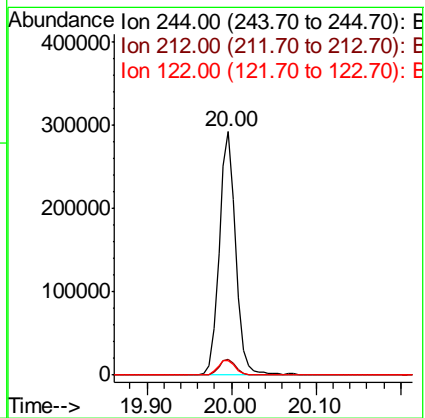
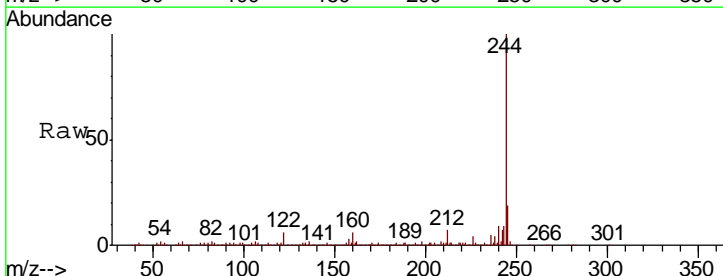
Tgt Ion	Resp	Lower	Upper
202	100		
200	21.0	17.0	25.4
203	17.9	14.7	22.1

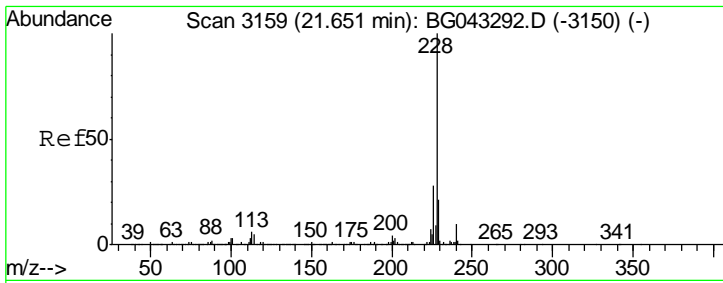
Manual Integrations  
**APPROVED**  
 Sohil  
 11/8/2019 3:30:00 PM



#79  
 Terphenyl-d14  
 Concen: 30.896 ng  
 RT: 20.00 min Scan# 2878  
 Delta R.T. -0.00 min  
 Lab File: BG043535.D  
 Acq: 7 Nov 2019 00:40

Tgt Ion	Resp	Lower	Upper
244	100		
212	6.5	5.8	8.6
122	5.8	5.4	8.2





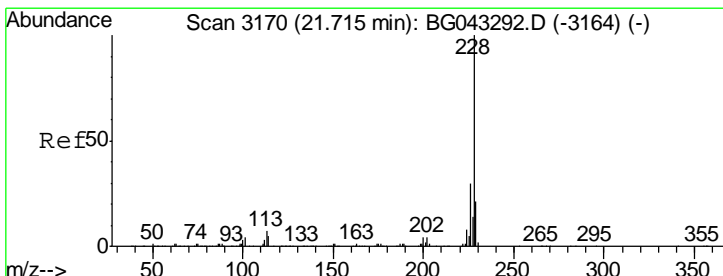
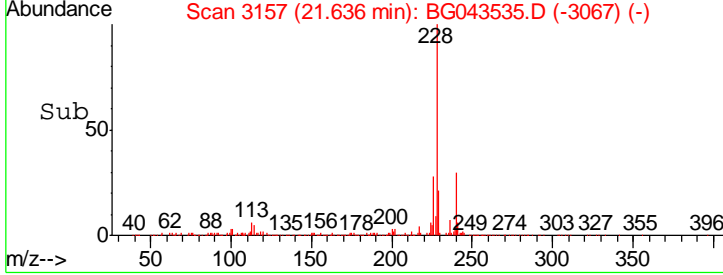
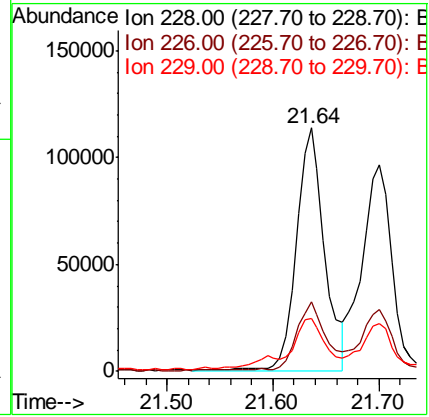
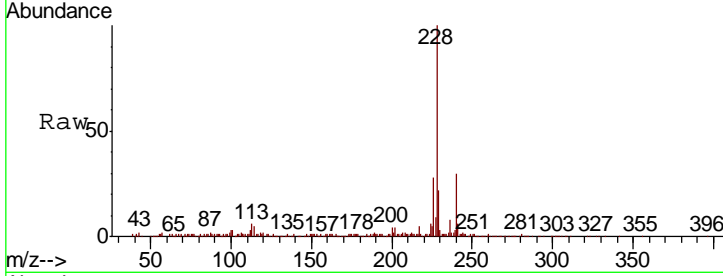
#81  
 Benzo(a)anthracene  
 Concen: 13.780 ng  
 RT: 21.64 min Scan# 3157  
 Delta R.T. -0.00 min  
 Lab File: BG043535.D  
 Acq: 7 Nov 2019 00:40

Instrument :  
 BNA\_G  
 ClientSampled :  
 OR-02-110519

Tgt Ion	Resp	Lower	Upper
228	100		
226	28.4	22.2	33.2
229	21.9	17.0	25.4

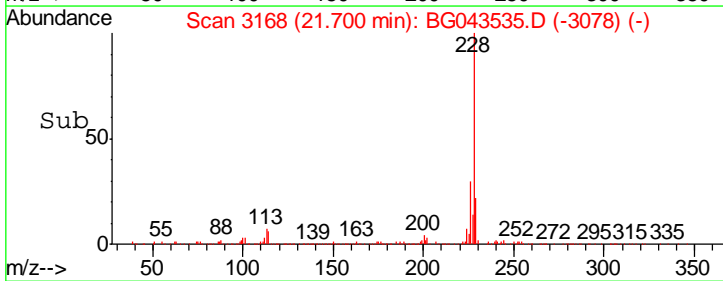
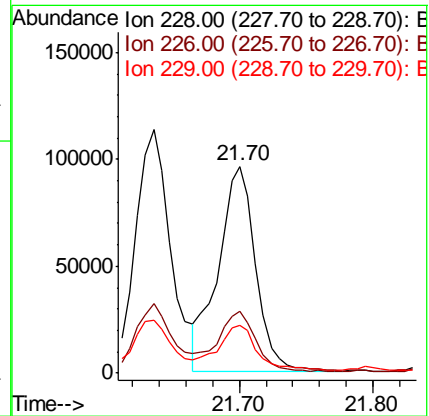
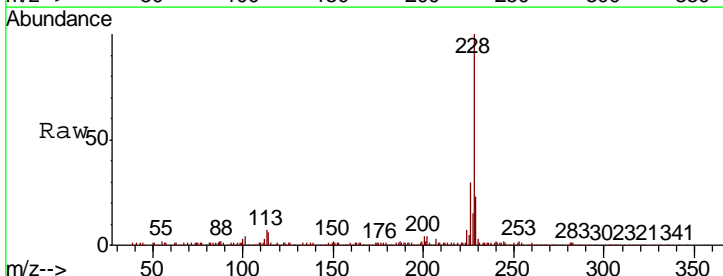
Manual Integrations  
 APPROVED

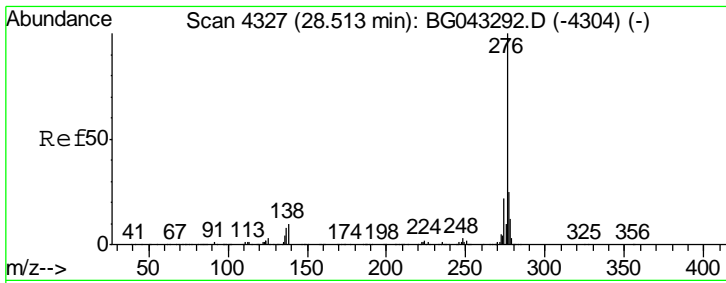
Sohil  
 11/8/2019 3:30:00 PM



#83  
 Chrysene  
 Concen: 12.477 ng  
 RT: 21.70 min Scan# 3168  
 Delta R.T. -0.00 min  
 Lab File: BG043535.D  
 Acq: 7 Nov 2019 00:40

Tgt Ion	Resp	Lower	Upper
228	100		
226	30.0	25.1	37.7
229	23.2	17.0	25.4





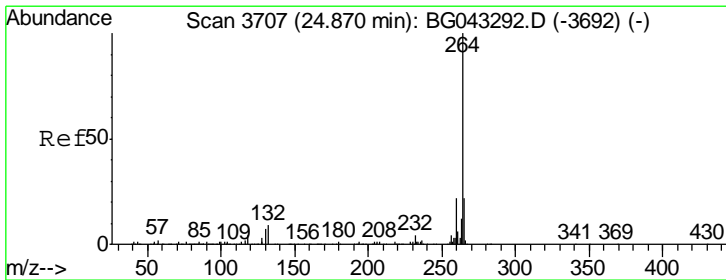
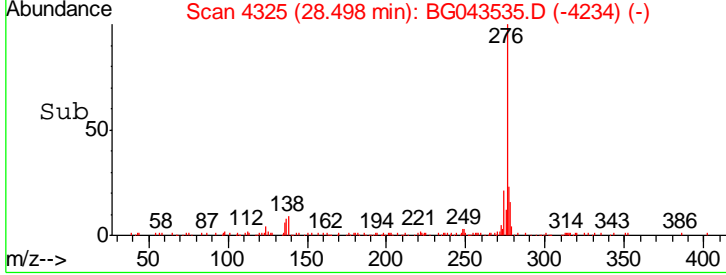
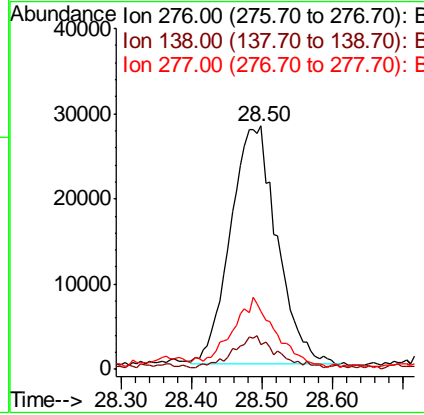
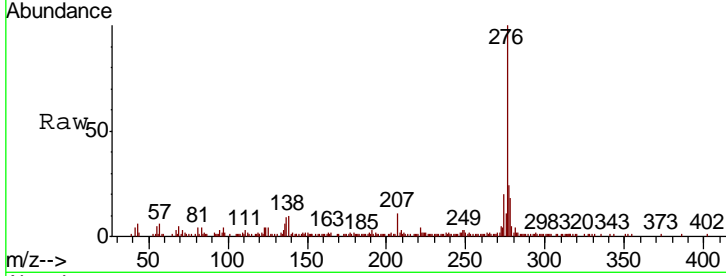
#86  
 Indeno(1,2,3-cd)pyrene  
 Concen: 6.726 ng  
 RT: 28.50 min Scan# 4325  
 Delta R.T. 0.00 min  
 Lab File: BG043535.D  
 Acq: 7 Nov 2019 00:40

**Instrument :**  
 BNA\_G  
**Client Sampled :**  
 OR-02-110519

Tgt Ion	Resp	Lower	Upper
276	127567		
138	11.6	6.8	10.2#
277	27.1	20.9	31.3

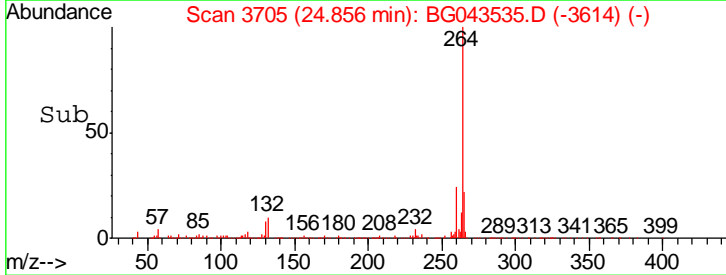
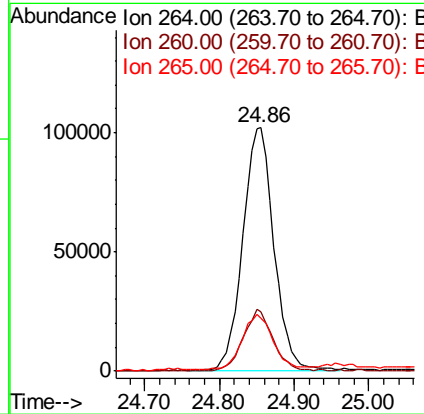
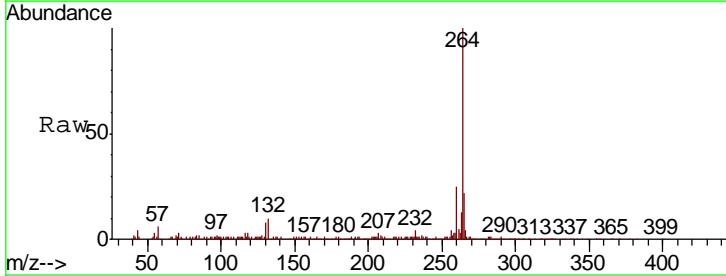
**Manual Integrations**  
**APPROVED**

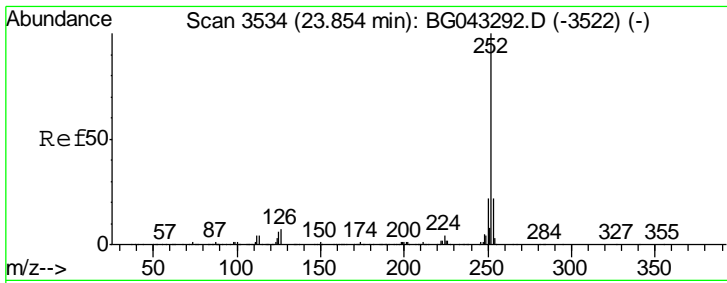
Sohil  
 11/8/2019 3:30:00 PM



#87  
 Perylene-d12  
 Concen: 20.000 ng  
 RT: 24.86 min Scan# 3705  
 Delta R.T. 0.00 min  
 Lab File: BG043535.D  
 Acq: 7 Nov 2019 00:40

Tgt Ion	Resp	Lower	Upper
264	294534		
260	24.6	17.5	26.3
265	22.0	17.4	26.0





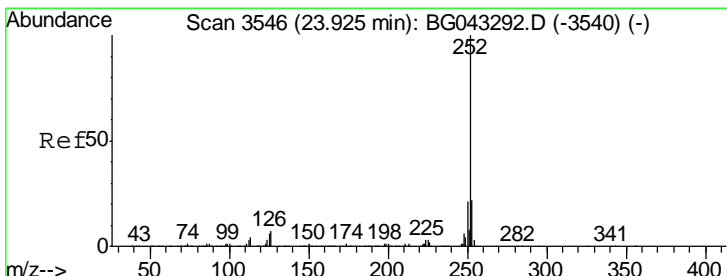
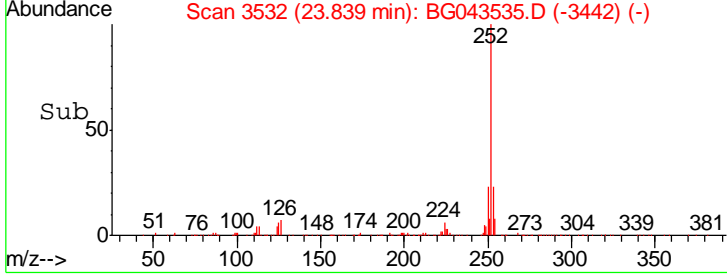
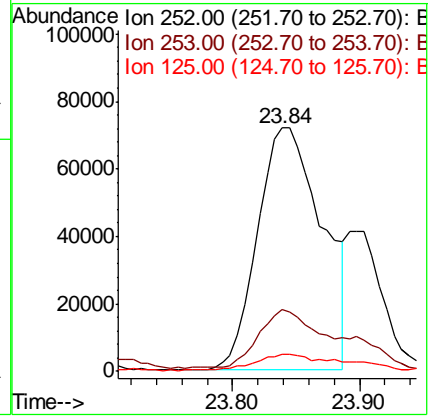
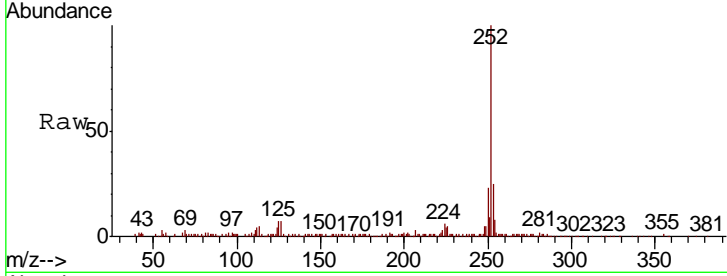
#88  
 Benzo(b)fluoranthene  
 Concen: 15.336 ng  
 RT: 23.84 min Scan# 3532  
 Delta R.T. -0.00 min  
 Lab File: BG043535.D  
 Acq: 7 Nov 2019 00:40

**Instrument :**  
 BNA\_G  
**ClientSampled :**  
 OR-02-110519

Tgt Ion	Ratio	Lower	Upper
252	100		
253	25.5	17.7	26.5
125	7.0	4.5	6.7#

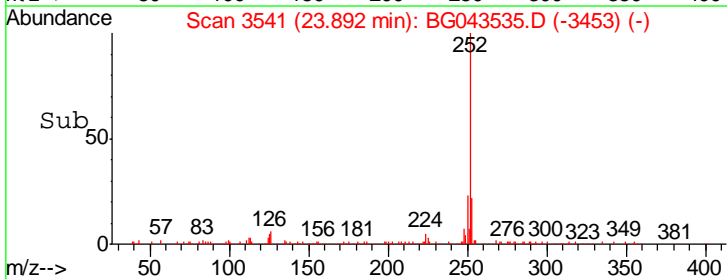
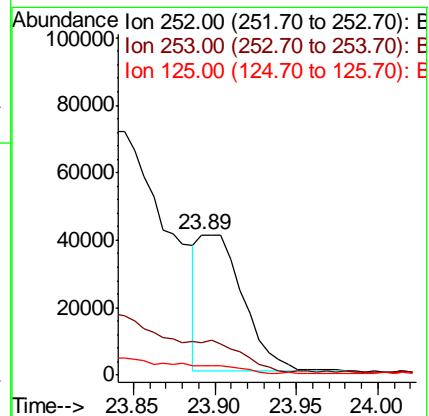
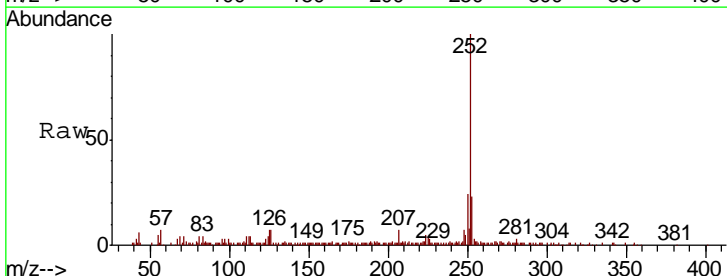
**Manual Integrations**  
**APPROVED**

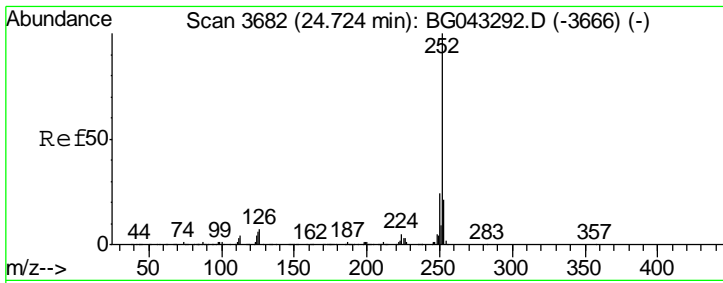
Sohil  
 11/8/2019 3:30:00 PM



#89  
 Benzo(k)fluoranthene  
 Concen: 4.601 ng m  
 RT: 23.89 min Scan# 3541  
 Delta R.T. -0.01 min  
 Lab File: BG043535.D  
 Acq: 7 Nov 2019 00:40

Tgt Ion	Ratio	Lower	Upper
252	100		
253	22.6	17.3	25.9
125	7.1	4.6	6.8#



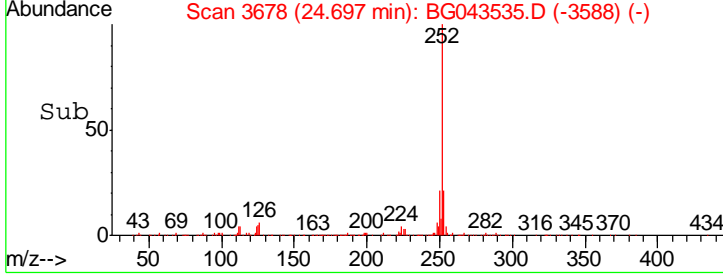
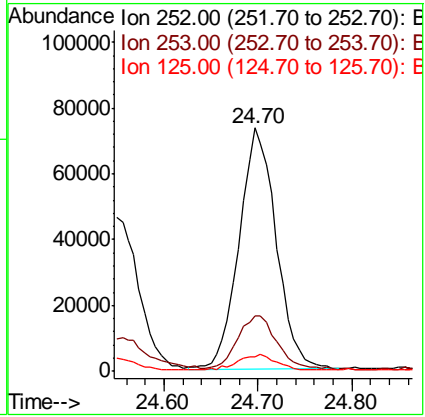
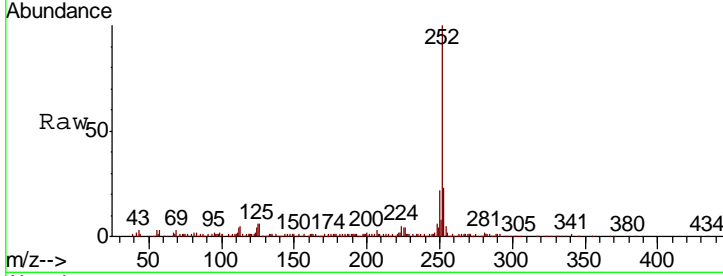


#90  
 Benzo(a)pyrene  
 Concen: 12.520 ng  
 RT: 24.70 min Scan# 3678  
 Delta R.T. -0.00 min  
 Lab File: BG043535.D  
 Acq: 7 Nov 2019 00:40

Instrument :  
 BNA\_G  
 Client Sampled :  
 OR-02-110519

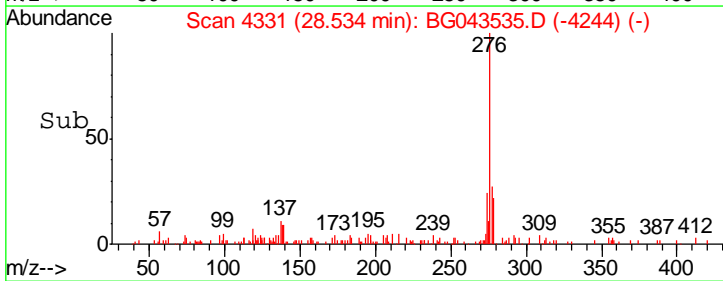
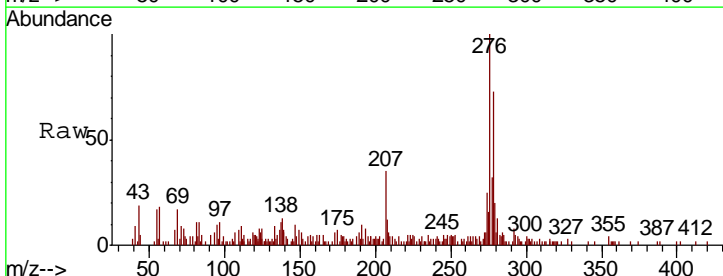
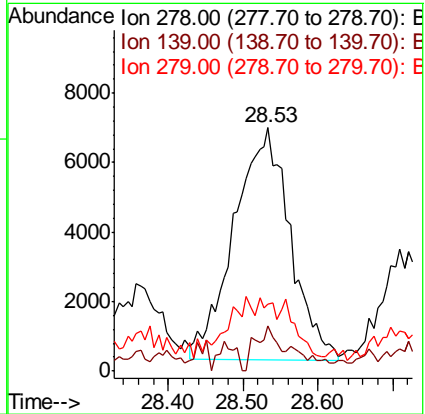
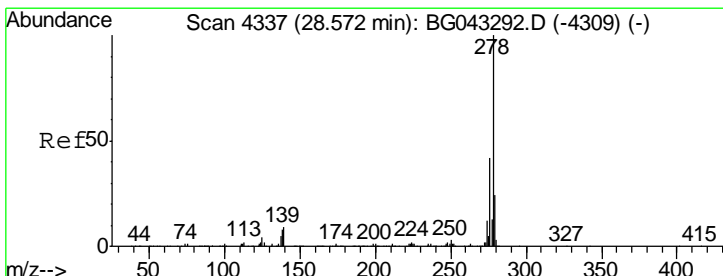
Tgt Ion	Resp	Lower	Upper
252	199434		
253	22.5	17.8	26.8
125	6.1	5.4	8.2

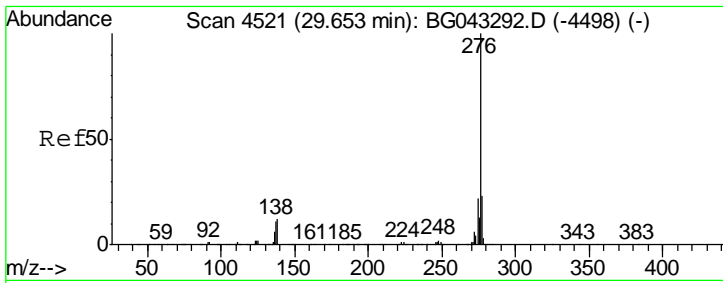
Manual Integrations  
**APPROVED**  
 Sohil  
 11/8/2019 3:30:00 PM



#91  
 Dibenzo(a,h)anthracene  
 Concen: 2.121 ng m  
 RT: 28.53 min Scan# 4331  
 Delta R.T. -0.02 min  
 Lab File: BG043535.D  
 Acq: 7 Nov 2019 00:40

Tgt Ion	Resp	Lower	Upper
278	34551		
279	27.5	19.1	28.7
139	10.0	7.4	11.0





#92  
 Benzo(a,h,i)perylene  
 Concen: 8.384 ng  
 RT: 29.63 min Scan# 4517  
 Delta R.T. -0.00 min  
 Lab File: BG043535.D  
 Acq: 7 Nov 2019 00:40

Instrument :  
 BNA\_G  
 ClientSampled :  
 OR-02-110519

Tot Ion	Ratio	Lower	Upper
276	100		
277	25.8	18.9	28.3
138	12.8	8.9	13.3

Manual Integrations  
 APPROVED  
 Sohil  
 11/8/2019 3:30:00 PM

