

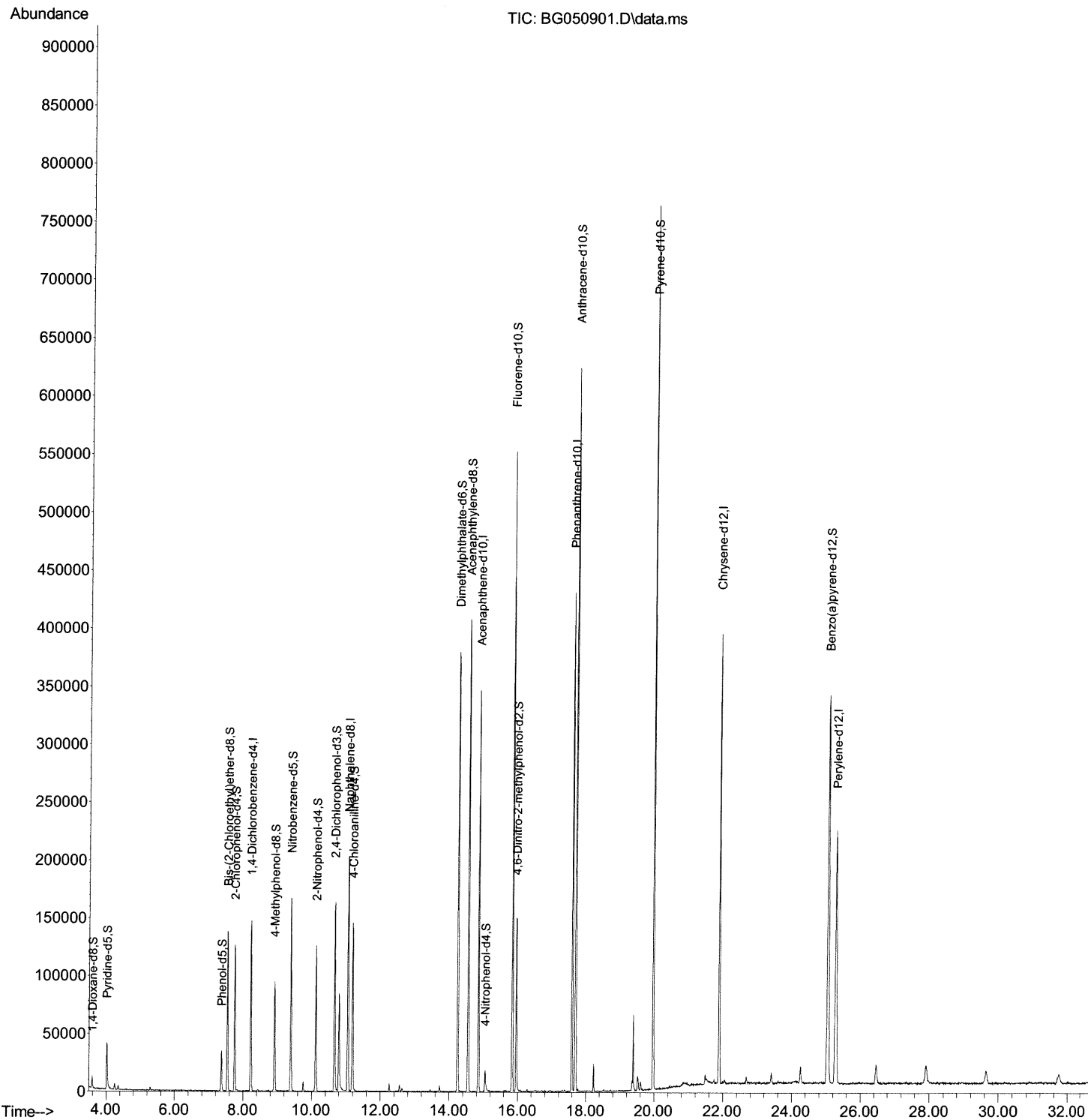
Data Path : Z:\svoasrv\HPCHEM1\BNA\_G\Data\BG110821\  
Data File : BG050901.D  
Acq On : 9 Nov 2021 5:55  
Operator : CG/JU  
Sample : M4445-14  
Misc :  
ALS Vial : 27 Sample Multiplier: 1

Instrument :  
BNA\_G  
ClientSampleId :  
BG388

Manual IntegrationsAPPROVED

Quant Time: Nov 09 06:17:25 2021  
Quant Method : Z:\svoasrv\HPCHEM1\BNA\_G\Methods\SFAM-EPA-BG110321.M  
Quant Title : SVOA CALIBRATION  
QLast Update : Tue Nov 02 14:49:05 2021  
Response via : Initial Calibration

Reviewed By :Jagrut Upadhyay 11/09/2021  
Supervised By :mohammad ahmed 11/09/2021



# Quantitation Report (Qedit)

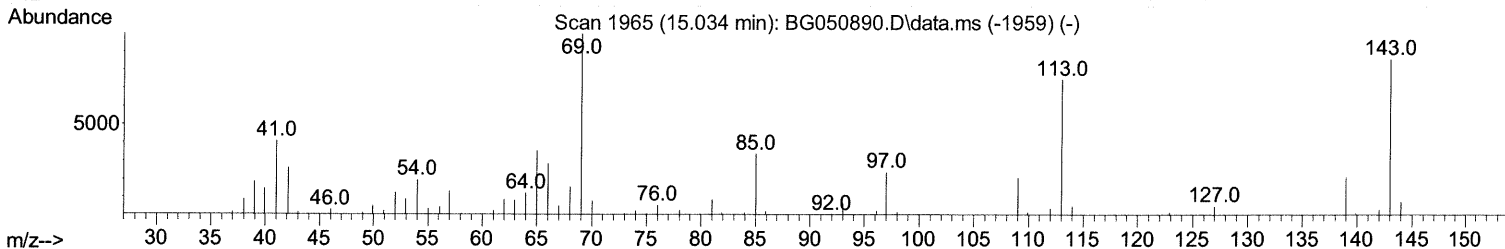
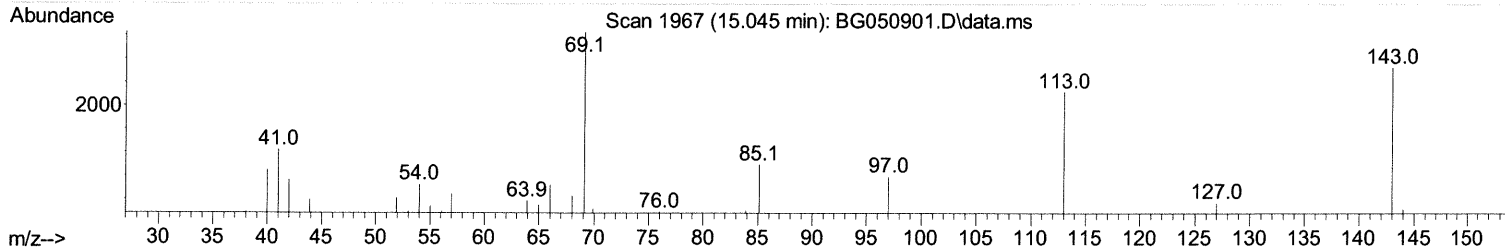
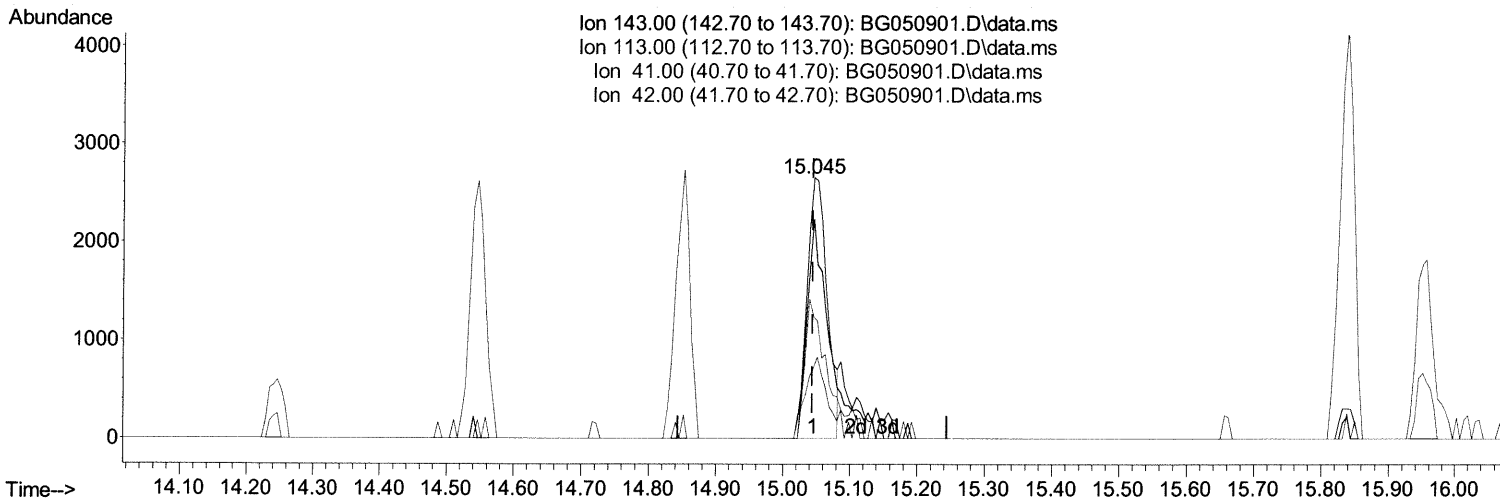
Data Path : Z:\svoasrv\HPCHEM1\BNA\_G\Data\BG110821\  
 Data File : BG050901.D  
 Acq On : 9 Nov 2021 5:55  
 Operator : CG/JU  
 Sample : M4445-14  
 Misc :  
 ALS Vial : 27 Sample Multiplier: 1

Instrument :  
 BNA\_G  
 ClientSampleId :  
 BG388

Manual IntegrationsAPPROVED

Quant Time: Nov 09 06:17:25 2021  
 Quant Method : Z:\svoasrv\HPCHEM1\BNA\_G\Methods\SFAM-EPA-BG110321.M  
 Quant Title : SVOA CALIBRATION  
 Qlast Update : Tue Nov 02 14:49:05 2021  
 Response via : Initial Calibration

Reviewed By :Jagrut Upadhyay 11/09/2021  
 Supervised By :mohammad ahmed 11/09/2021



TIC: BG050901.D\data.ms

(54) 4-Nitrophenol-d4 (S)

15.045min (+ 0.001) 3.45 ng/ul

response 5550

Ion	Exp%	Act%
143.00	100.00	100.00
113.00	80.30	84.07
41.00	44.40	46.61
42.00	29.70	27.26

## Quantitation Report (Qedit)

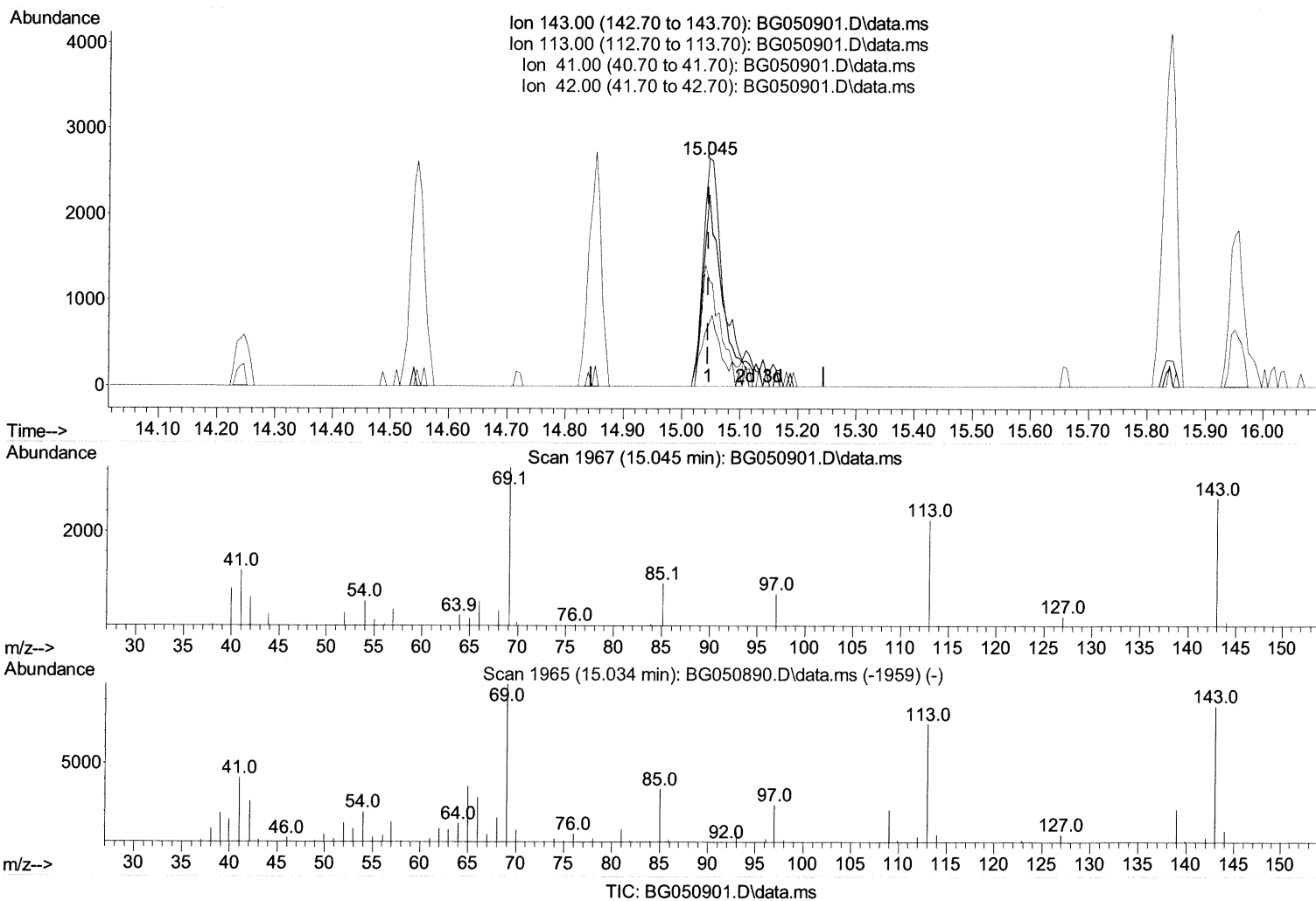
Data Path : Z:\svoasrv\HPCHEM1\BNA\_G\Data\BG110821\  
Data File : BG050901.D  
Acq On : 9 Nov 2021 5:55  
Operator : CG/JU  
Sample : M4445-14  
Misc :  
ALS Vial : 27 Sample Multiplier: 1

Instrument :  
BNA\_G  
ClientSampleId :  
BG388

Manual IntegrationsAPPROVED

Quant Time: Nov 09 06:17:25 2021  
Quant Method : Z:\svoasrv\HPCHEM1\BNA\_G\Methods\SFAM-EPA-BG110321.M  
Quant Title : SVOA CALIBRATION  
Qlast Update : Tue Nov 02 14:49:05 2021  
Response via : Initial Calibration

Reviewed By :Jagrut Upadhyay 11/09/2021  
Supervised By :mohammad ahmed 11/09/2021



(54) 4-Nitrophenol-d4 (S)

15.045min (+ 0.001) 3.89 ng/ul m 11/11/21 JU

response 6257

Ion	Exp%	Act%
143.00	100.00	100.00
113.00	80.30	84.07
41.00	44.40	46.61
42.00	29.70	27.26

Data Path : Z:\svoasrv\HPCHEM1\BNA\_G\Data\BG110821\  
 Data File : BG050901.D  
 Acq On : 9 Nov 2021 5:55  
 Operator : CG/JU  
 Sample : M4445-14  
 Misc :  
 ALS Vial : 27 Sample Multiplier: 1

Instrument :  
 BNA\_G  
 ClientSampleId :  
 BG388

## Manual IntegrationsAPPROVED

Reviewed By :Jagrut Upadhyay 11/09/2021  
 Supervised By :mohammad ahmed 11/09/2021

Quant Time: Nov 09 06:17:25 2021  
 Quant Method : Z:\svoasrv\HPCHEM1\BNA\_G\Methods\SFAM-EPA-BG110321.M  
 Quant Title : SVOA CALIBRATION  
 QLast Update : Tue Nov 02 14:49:05 2021  
 Response via : Initial Calibration

Compound	R.T.	QIon	Response	Conc	Units	Dev(Min)
-----						
Internal Standards						
1) 1,4-Dichlorobenzene-d4	8.230	152	39983	20.000	ng/ul	0.00
20) Naphthalene-d8	11.050	136	174113	20.000	ng/ul	-0.01
38) Acenaphthene-d10	14.851	164	115853	20.000	ng/ul	-0.01
64) Phenanthrene-d10	17.595	188	255498	20.000	ng/ul	-0.01
79) Chrysene-d12	21.890	240	225301	20.000	ng/ul	-0.02
88) Perylene-d12	25.292	264	220081	20.000	ng/ul	-0.02
System Monitoring Compounds						
3) 1,4-Dioxane-d8	3.594	96	5913	4.773	ng/uL	0.00
4) Pyridine-d5	4.017	84	27537	7.430	ng/ul	0.00
7) Phenol-d5	7.372	99	21571	5.057	ng/ul	0.00
9) Bis-(2-Chloroethyl)eth...	7.542	67	70032	25.416	ng/ul	0.00
11) 2-Chlorophenol-d4	7.754	132	56698	19.180	ng/ul	-0.01
15) 4-Methylphenol-d8	8.923	113	38230	11.385	ng/ul	-0.01
21) Nitrobenzene-d5	9.399	128	39252	26.528	ng/ul	-0.01
24) 2-Nitrophenol-d4	10.127	143	40984	24.911	ng/ul	-0.01
28) 2,4-Dichlorophenol-d3	10.668	165	60234	21.734	ng/ul	0.00
31) 4-Chloroaniline-d4	11.185	131	83610	19.922	ng/ul	0.00
46) Dimethylphthalate-d6	14.240	166	248464	28.032	ng/ul	-0.01
49) Acenaphthylene-d8	14.546	160	298607	27.041	ng/ul	-0.01
54) 4-Nitrophenol-d4	15.045	143	6257m	3.893	ng/ul	0.00
60) Fluorene-d10	15.838	176	216869	27.620	ng/ul	-0.01
65) 4,6-Dinitro-2-methylph...	15.956	200	32864	21.216	ng/ul	0.00
73) Anthracene-d10	17.695	188	362372	29.999	ng/ul	-0.01
81) Pyrene-d10	19.969	212	411144	28.254	ng/ul	-0.01
92) Benzo(a)pyrene-d12	25.057	264	345564	28.403	ng/ul	-0.02

Target Compounds Qvalue

(#) = qualifier out of range (m) = manual integration (+) = signals summed