

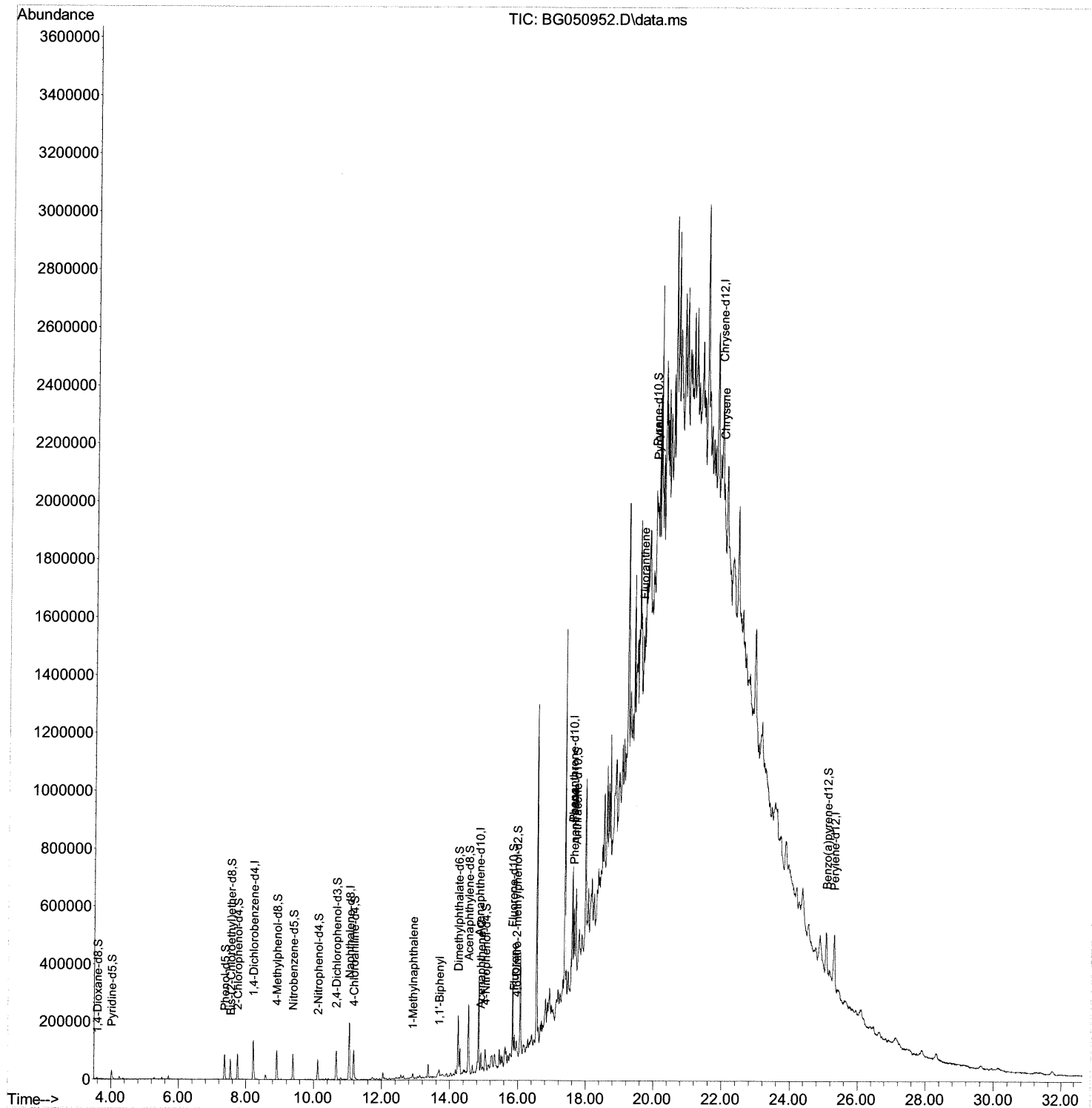
Data Path : Z:\svoasrv\HPCHEM1\BNA_G\Data\BG110821\
Data File : BG050952.D
Acq On : 10 Nov 2021 21:04
Operator : CG/JU
Sample : M4419-03
Misc :
ALS Vial : 30 Sample Multiplier: 1

Instrument :
BNA_G
ClientSampleId :
C0HF2

Manual IntegrationsAPPROVED

Quant Time: Nov 11 01:38:33 2021
Quant Method : Z:\svoasrv\HPCHEM1\BNA_G\Methods\SFAM-EPA-BG110321.M
Quant Title : SVOA CALIBRATION
QLast Update : Tue Nov 02 14:49:05 2021
Response via : Initial Calibration

Reviewed By :Jagrut Upadhyay 11/11/2021
Supervised By :mohammad ahmed 11/11/2021



Quantitation Report (Qedit)

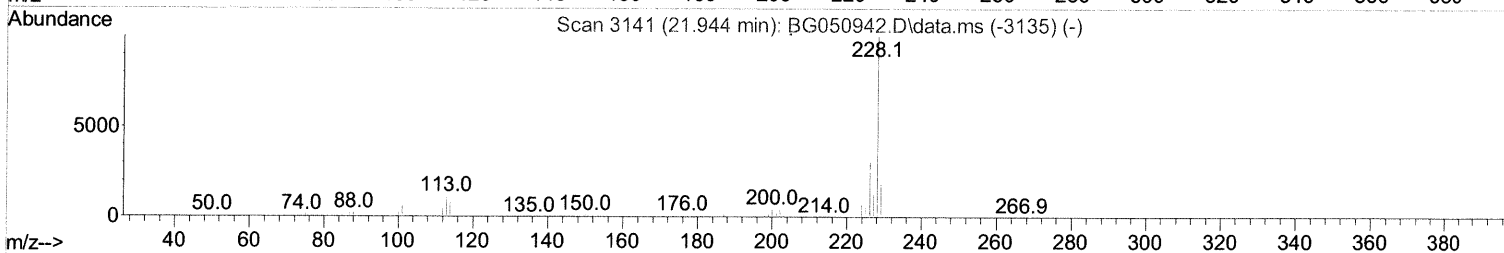
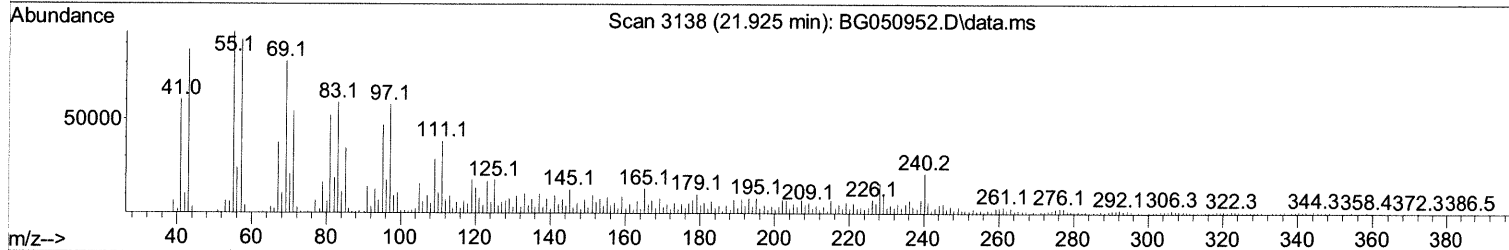
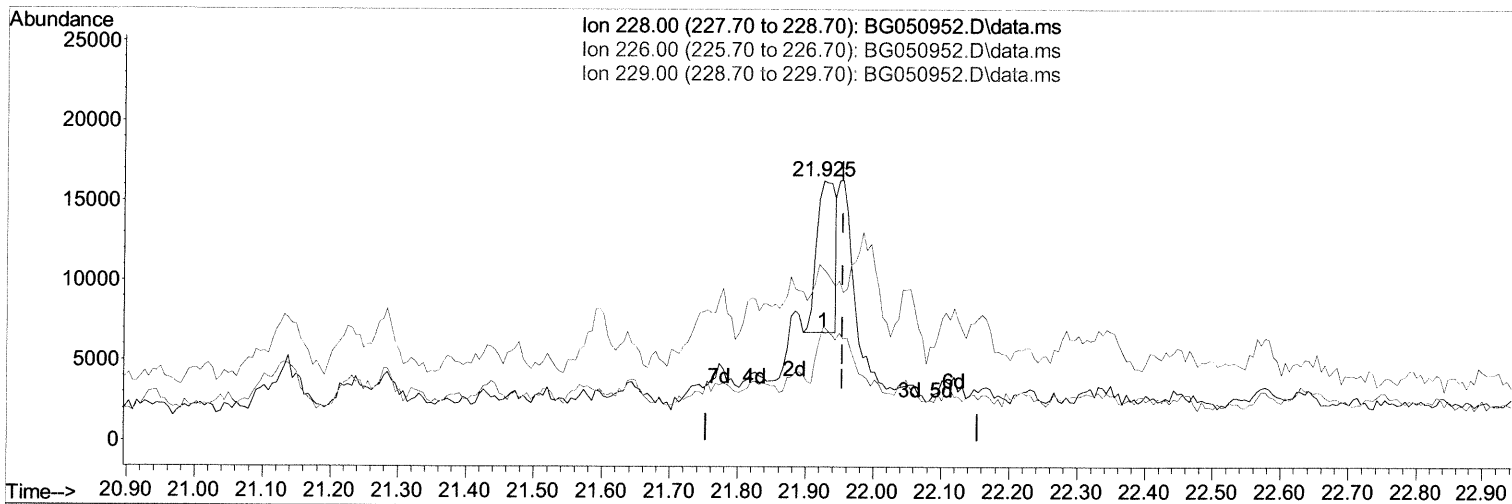
Data Path : Z:\svoasrv\HPCHEM1\BNA_G\Data\BG110821\
 Data File : BG050952.D
 Acq On : 10 Nov 2021 21:04
 Operator : CG/JU
 Sample : M4419-03
 Misc :
 ALS Vial : 30 Sample Multiplier: 1

Instrument :
 BNA_G
 ClientSampleId :
 C0HF2

Manual IntegrationsAPPROVED

Quant Time: Nov 11 01:38:33 2021
 Quant Method : Z:\svoasrv\HPCHEM1\BNA_G\Methods\SFAM-EPA-BG110321.M
 Quant Title : SVOA CALIBRATION
 QLast Update : Tue Nov 02 14:49:05 2021
 Response via : Initial Calibration

Reviewed By :Jagrut Upadhyay 11/11/2021
 Supervised By :mohammad ahmed 11/11/2021



TIC: BG050952.D\data.ms

(87) Chrysene

21.925min (-0.029) 1.68 ng/u1

response 18166

Ion	Exp%	Act%
228.00	100.00	100.00
226.00	31.00	44.33#
229.00	19.70	65.90#
0.00	0.00	0.00

Quantitation Report (Qedit)

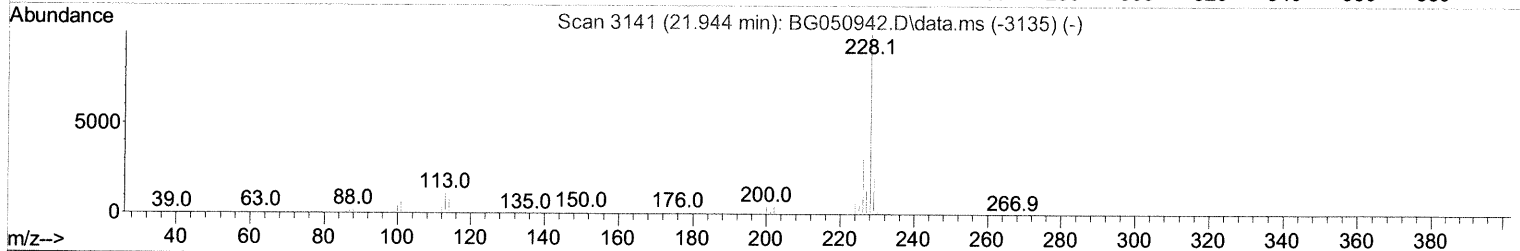
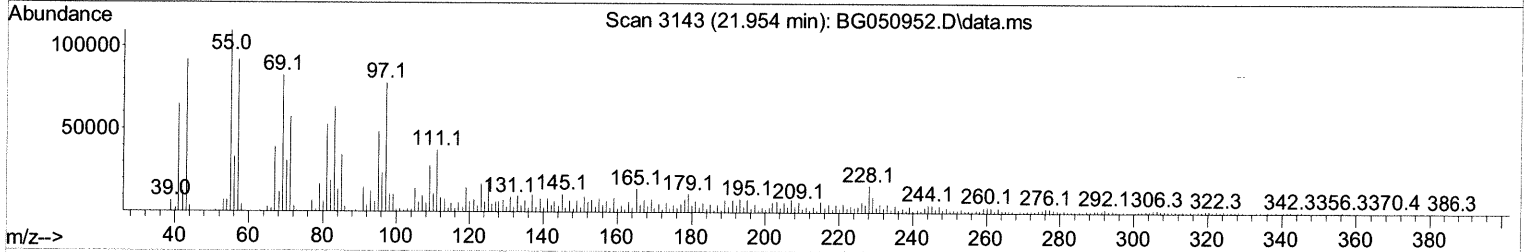
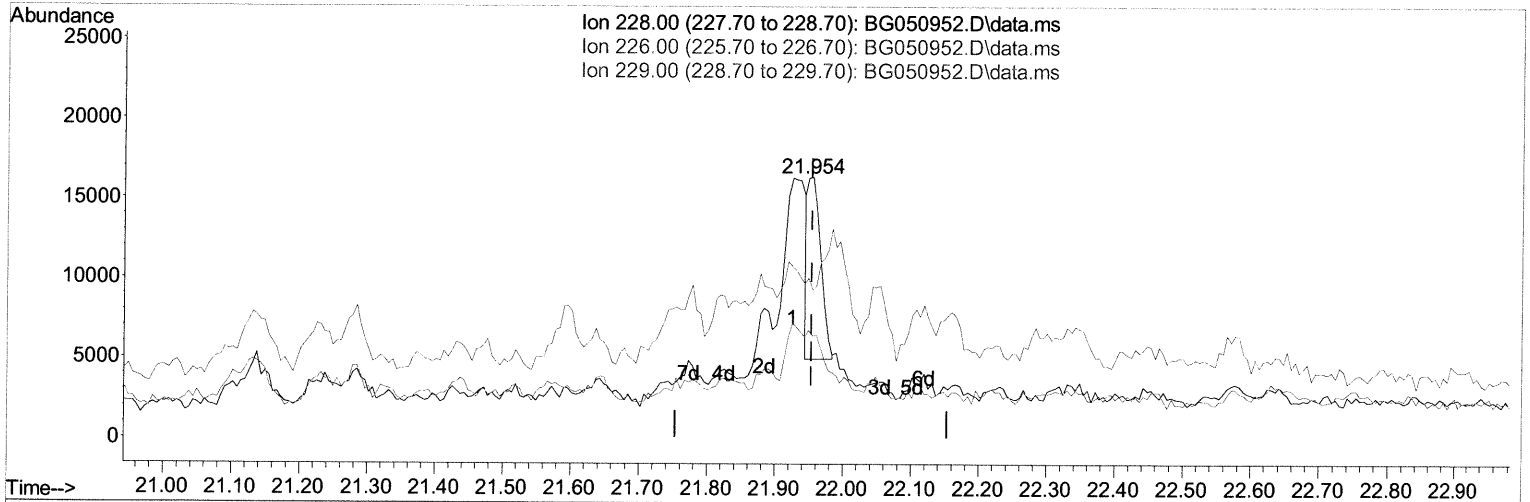
Data Path : Z:\svoasrv\HPCHEM1\BNA_G\Data\BG110821\
 Data File : BG050952.D
 Acq On : 10 Nov 2021 21:04
 Operator : CG/JU
 Sample : M4419-03
 Misc :
 ALS Vial : 30 Sample Multiplier: 1

Instrument :
 BNA_G
 ClientSampleId :
 C0HF2

Manual IntegrationsAPPROVED

Quant Time: Nov 11 01:38:33 2021
 Quant Method : Z:\svoasrv\HPCHEM1\BNA_G\Methods\SFAM-EPA-BG110321.M
 Quant Title : SVOA CALIBRATION
 QLast Update : Tue Nov 02 14:49:05 2021
 Response via : Initial Calibration

Reviewed By :Jagrut Upadhyay 11/11/2021
 Supervised By :mohammad ahmed 11/11/2021



TIC: BG050952.D\data.ms

(87) Chrysene

21.954min (+ 0.001) 1.39 ng/ul m 11/17/21 JU

response 15066

Ion	Exp%	Act%
228.00	100.00	100.00
226.00	31.00	39.38#
229.00	19.70	56.92#
0.00	0.00	0.00

Data Path : Z:\svoasrv\HPCHEM1\BNA_G\Data\BG110821\
 Data File : BG050952.D
 Acq On : 10 Nov 2021 21:04
 Operator : CG/JU
 Sample : M4419-03
 Misc :
 ALS Vial : 30 Sample Multiplier: 1

Instrument :
 BNA_G
 ClientSampleId :
 C0HF2

Manual IntegrationsAPPROVED

Reviewed By :Jagrut Upadhyay 11/11/2021
 Supervised By :mohammad ahmed 11/11/2021

Quant Time: Nov 11 01:38:33 2021
 Quant Method : Z:\svoasrv\HPCHEM1\BNA_G\Methods\SFAM-EPA-BG110321.M
 Quant Title : SVOA CALIBRATION
 QLast Update : Tue Nov 02 14:49:05 2021
 Response via : Initial Calibration

Compound	R.T.	QIon	Response	Conc	Units	Dev(Min)

Internal Standards						
1) 1,4-Dichlorobenzene-d4	8.229	152	37515	20.00	ng/ul	0.00
20) Naphthalene-d8	11.049	136	164436	20.00	ng/ul	-0.01
38) Acenaphthene-d10	14.851	164	105405	20.00	ng/ul	-0.01
64) Phenanthrene-d10	17.595	188	190790	20.00	ng/ul	-0.01
79) Chrysene-d12	21.907	240	163842	20.00	ng/ul	# 0.00
88) Perylene-d12	25.309	264	172564	20.00	ng/ul	0.00
System Monitoring Compounds						
3) 1,4-Dioxane-d8	3.587	96	2431	2.09	ng/uL	0.00
4) Pyridine-d5	4.016	84	19597	5.64	ng/ul	0.00
7) Phenol-d5	7.371	99	51827	12.95	ng/ul	0.00
9) Bis-(2-Chloroethyl)eth...	7.542	67	35507	13.73	ng/ul	0.00
11) 2-Chlorophenol-d4	7.753	132	39855	14.37	ng/ul	-0.01
15) 4-Methylphenol-d8	8.922	113	40221	12.77	ng/ul	-0.01
21) Nitrobenzene-d5	9.398	128	21633	15.48	ng/ul	-0.01
24) 2-Nitrophenol-d4	10.127	143	23435	15.08	ng/ul	-0.01
28) 2,4-Dichlorophenol-d3	10.662	165	38091	14.55	ng/ul	-0.01
31) 4-Chloroaniline-d4	11.184	131	52101	13.14	ng/ul	0.00
46) Dimethylphthalate-d6	14.240	166	127942	15.87	ng/ul	-0.01
49) Acenaphthylene-d8	14.545	160	169175	16.84	ng/ul	-0.01
54) 4-Nitrophenol-d4	15.039	143	13160	9.00	ng/ul	0.00
60) Fluorene-d10	15.838	176	115434	16.16	ng/ul	-0.01
65) 4,6-Dinitro-2-methylph...	15.955	200	13525	11.69	ng/ul	0.00
73) Anthracene-d10	17.694	188	164109	18.19	ng/ul	-0.01
81) Pyrene-d10	19.974	212	173747	16.42	ng/ul	0.00
92) Benzo(a)pyrene-d12	25.074	264	154906	16.24	ng/ul	0.00
Target Compounds						
					Qvalue	
37) 1-Methylnaphthalene	12.912	142	8174	1.32	ng/ul#	97
43) 1,1'-Biphenyl	13.687	154	11601	1.51	ng/ul#	96
52) Acenaphthene	14.915	153	21648	3.27	ng/ul	94
61) Fluorene	15.891	166	23896	3.19	ng/ul	99
72) Phenanthrene	17.636	178	131561	12.92	ng/ul	97
80) Fluoranthene	19.639	202	29072	2.29	ng/ul#	91
82) Pyrene	20.004	202	42193	3.40	ng/ul#	81
87) Chrysene	21.954	228	15066m	1.39	ng/ul >	11/17/21 JU

(#) = qualifier out of range (m) = manual integration (+) = signals summed