

Quantitation Report (QT Reviewed)

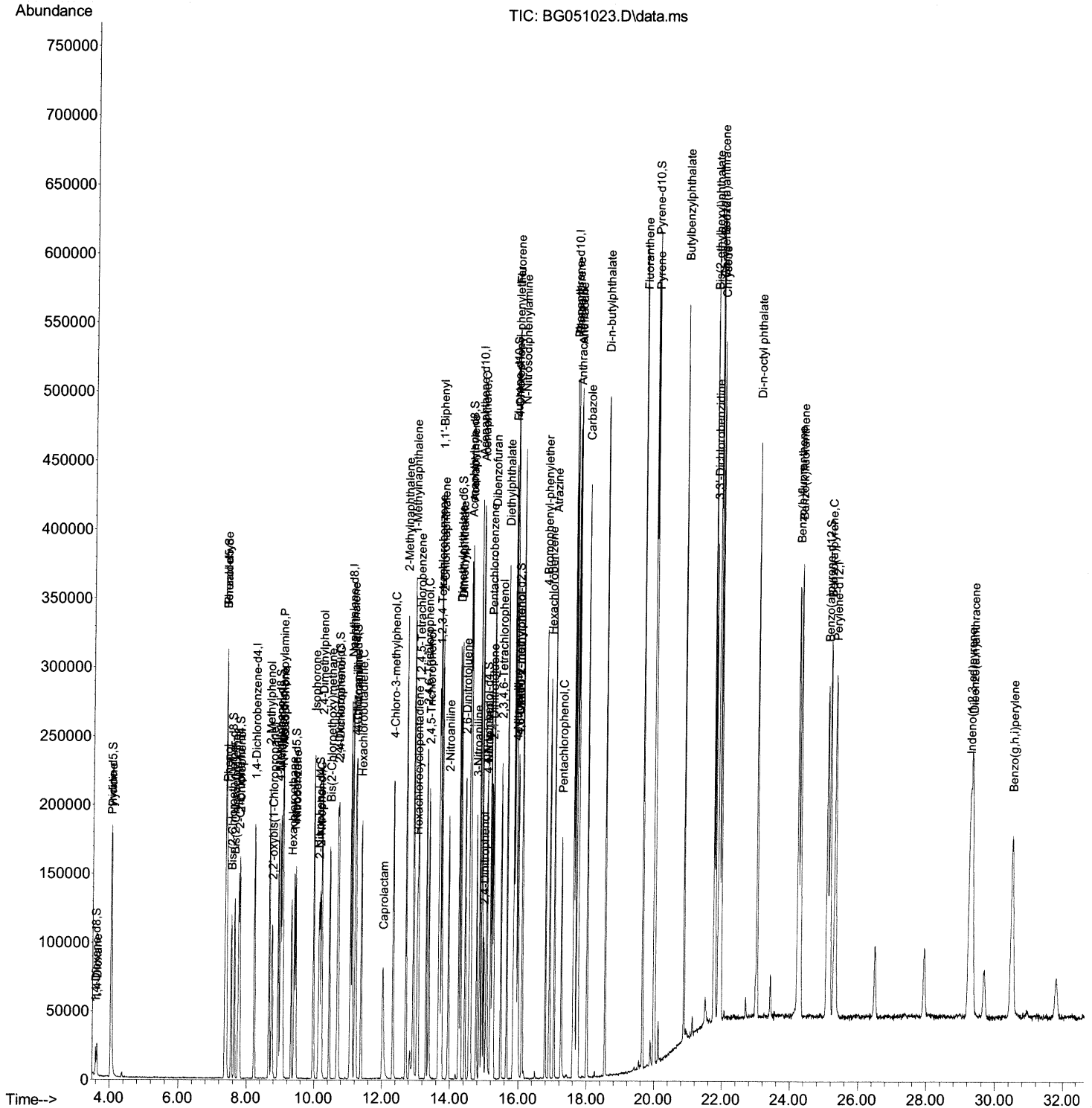
```
Data Path : Z:\svoasrv\HPCHEM1\BNA_G\Data\BG111121\  
Data File : BG051023.D  
Acq On    : 13 Nov 2021    8:22  
Operator  : CG/JU  
Sample    : SSTDCCC020EC  
Misc      :  
ALS Vial  : 63    Sample Multiplier: 1
```

Instrument :
BNA_G
LabSampleId :
SSTDCCC020EC

Manual IntegrationsAPPROVED

Quant Time: Nov 15 01:51:56 2021
Quant Method : Z:\svoasrv\HPCHEM1\BNA_G\Methods\SFAM-EPA-BG110321.M
Quant Title : SVOA CALIBRATION
QLast Update : Mon Nov 15 00:27:19 2021
Response via : Initial Calibration

Reviewed By :Jagrut Upadhyay 11/15/2021
Supervised By :mohammad ahmed 11/17/2021



Quantitation Report (Qedit)

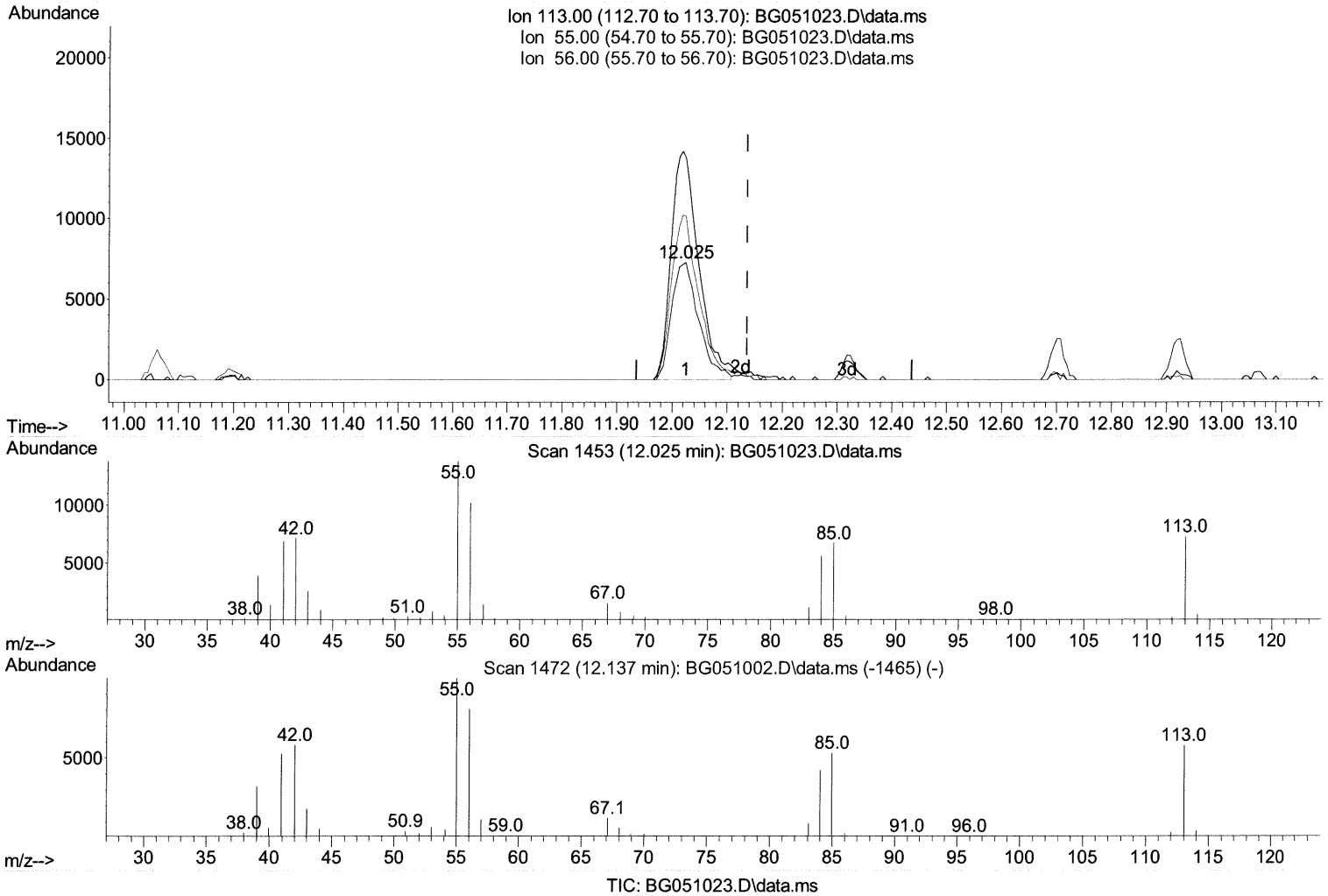
Data Path : Z:\svoasrv\HPCHEM1\BNA_G\Data\BG111121\
 Data File : BG051023.D
 Acq On : 13 Nov 2021 8:22
 Operator : CG/JU
 Sample : SSTDCCC020EC
 Misc :
 ALS Vial : 63 Sample Multiplier: 1

Instrument :
 BNA_G
 LabSampleId :
 SSTDCCC020EC

Manual IntegrationsAPPROVED

Quant Time: Nov 15 01:51:56 2021
 Quant Method : Z:\svoasrv\HPCHEM1\BNA_G\Methods\SFAM-EPA-BG110321.M
 Quant Title : SVOA CALIBRATION
 QLast Update : Mon Nov 15 00:27:19 2021
 Response via : Initial Calibration

Reviewed By :Jagrut Upadhyay 11/15/2021
 Supervised By :mohammad ahmed 11/17/2021



(34) Caprolactam

12.025min (-0.112) 16.13 ng/ul

response 24970

Ion	Exp%	Act%
113.00	100.00	100.00
55.00	183.80	189.64
56.00	136.50	139.90
0.00	0.00	0.00

Quantitation Report (Qedit)

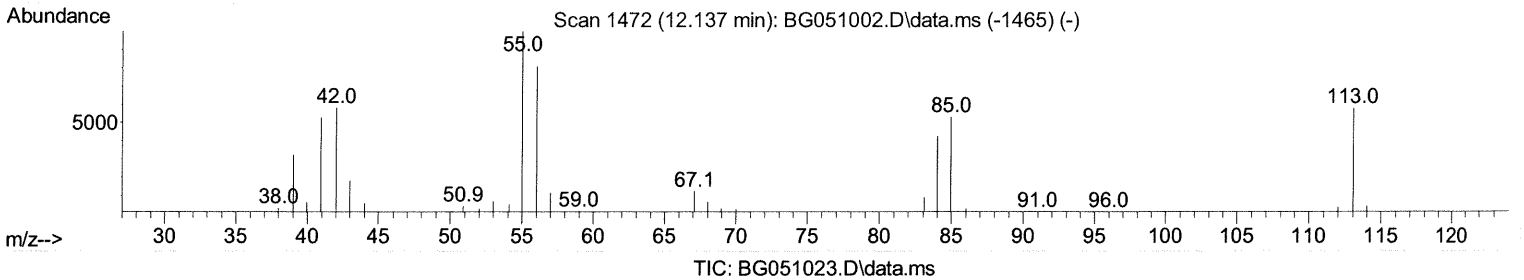
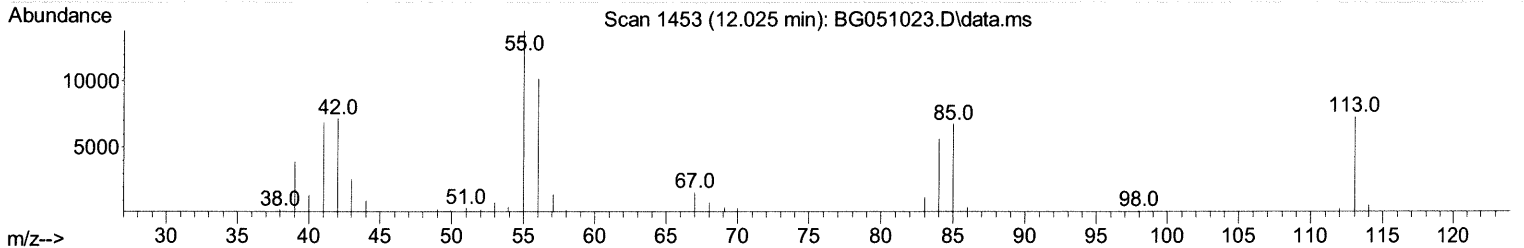
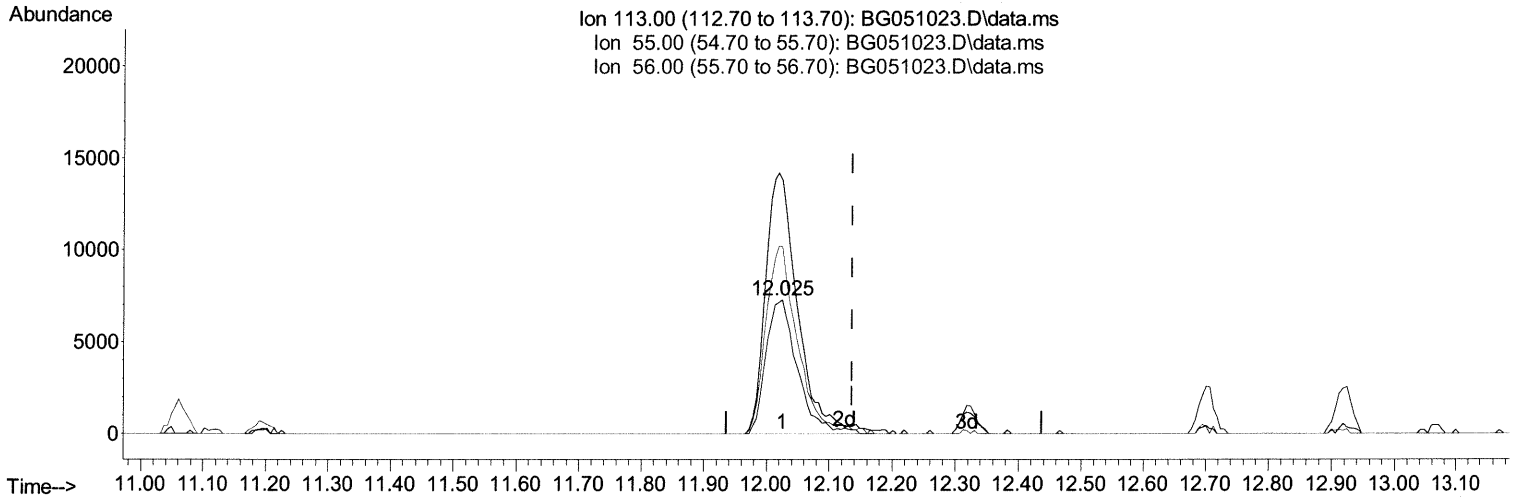
Data Path : Z:\svoasrv\HPCHEM1\BNA_G\Data\BG111121\
 Data File : BG051023.D
 Acq On : 13 Nov 2021 8:22
 Operator : CG/JU
 Sample : SSTDCCC020EC
 Misc :
 ALS Vial : 63 Sample Multiplier: 1

Instrument :
 BNA_G
 LabSampleId :
 SSTDCCC020EC

Manual IntegrationsAPPROVED

Quant Time: Nov 15 01:51:56 2021
 Quant Method : Z:\svoasrv\HPCHEM1\BNA_G\Methods\SFAM-EPA-BG110321.M
 Quant Title : SVOA CALIBRATION
 QLast Update : Mon Nov 15 00:27:19 2021
 Response via : Initial Calibration

Reviewed By :Jagrut Upadhyay 11/15/2021
 Supervised By :mohammad ahmed 11/17/2021



(34) Caprolactam

12.025min (-0.112) 16.44 ng/ul m 11/7/21JU

response 25454

Ion	Exp%	Act%
113.00	100.00	100.00
55.00	183.80	189.64
56.00	136.50	139.90
0.00	0.00	0.00

Data Path : Z:\svoasrv\HPCHEM1\BNA_G\Data\BG111121\
 Data File : BG051023.D
 Acq On : 13 Nov 2021 8:22
 Operator : CG/JU
 Sample : SSTDCCC020EC
 Misc :
 ALS Vial : 63 Sample Multiplier: 1

Instrument :
 BNA_G
 LabSampleId :
 SSTDCCC020EC

Manual IntegrationsAPPROVED

Reviewed By :Jagrut Upadhyay 11/15/2021
 Supervised By :mohammad ahmed 11/17/2021

Quant Time: Nov 15 01:51:56 2021
 Quant Method : Z:\svoasrv\HPCHEM1\BNA_G\Methods\SFAM-EPA-BG110321.M
 Quant Title : SVOA CALIBRATION
 QLast Update : Mon Nov 15 00:27:19 2021
 Response via : Initial Calibration

Compound	R.T.	QIon	Response	Conc Units	Dev(Min)
Internal Standards					
1) 1,4-Dichlorobenzene-d4	8.235	152	51276	20.000 ng/ul	0.00
20) Naphthalene-d8	11.061	136	234915	20.000 ng/ul	-0.01
38) Acenaphthene-d10	14.863	164	148296	20.000 ng/ul	0.00
64) Phenanthrene-d10	17.606	188	308335	20.000 ng/ul	-0.01
79) Chrysene-d12	21.907	240	255359	20.000 ng/ul	-0.01
88) Perylene-d12	25.321	264	249796	20.000 ng/ul	-0.02

System Monitoring Compounds					
3) 1,4-Dioxane-d8	3.594	96	11256	7.085 ng/uL	0.00
4) Pyridine-d5	4.028	84	86390	18.177 ng/ul	-0.04
7) Phenol-d5	7.377	99	94833	17.336 ng/ul	-0.01
9) Bis-(2-Chloroethyl)eth...	7.548	67	60377	17.086 ng/ul	-0.01
11) 2-Chlorophenol-d4	7.765	132	68670	18.114 ng/ul	0.00
15) 4-Methylphenol-d8	8.940	113	74380	17.272 ng/ul	0.00
21) Nitrobenzene-d5	9.410	128	36400	18.234 ng/ul	-0.01
24) 2-Nitrophenol-d4	10.139	143	41346	18.626 ng/ul	0.00
28) 2,4-Dichlorophenol-d3	10.679	165	68021	18.192 ng/ul	0.00
31) 4-Chloroaniline-d4	11.196	131	99734	17.613 ng/ul	-0.01
46) Dimethylphthalate-d6	14.252	166	208303	18.360 ng/ul	-0.02
49) Acenaphthylene-d8	14.557	160	269827	19.089 ng/ul	-0.01
54) 4-Nitrophenol-d4	15.051	143	38237	18.588 ng/ul	-0.01
60) Fluorene-d10	15.850	176	183843	18.292 ng/ul	0.00
65) 4,6-Dinitro-2-methylph...	15.967	200	32418	17.342 ng/ul	-0.01
73) Anthracene-d10	17.706	188	275475	18.897 ng/ul	0.00
81) Pyrene-d10	19.980	212	299781	18.176 ng/ul	-0.01
92) Benzo(a)pyrene-d12	25.080	264	249109	18.039 ng/ul	-0.02

Target Compounds				Qvalue
2) 1,4-Dioxane	3.629	88	13891	7.961 ng/ul 93
5) Pyridine	4.052	79	92682	18.839 ng/ul 97
6) Benzaldehyde	7.371	77	74158	21.494 ng/ul 94
8) Phenol	7.407	94	99782	17.633 ng/ul 99
10) Bis(2-Chloroethyl)ether	7.642	93	75615	17.852 ng/ul 99
12) 2-Chlorophenol	7.794	128	69235	17.987 ng/ul 98
13) 2-Methylphenol	8.670	108	73749	17.632 ng/ul 93
14) 2,2'-oxybis(1-Chloropr...	8.758	45	116759	17.501 ng/ul 99
16) Acetophenone	9.069	105	118458	17.707 ng/ul 98
17) N-Nitroso-di-n-propyla...	9.040	70	68946	17.081 ng/ul 97
18) 4-Methylphenol	8.999	108	79355	17.819 ng/ul 96
19) Hexachloroethane	9.328	117	28142	17.487 ng/ul 98
22) Nitrobenzene	9.451	77	99737	17.913 ng/ul 99
23) Isophorone	9.980	82	190758	17.653 ng/ul 99
25) 2-Nitrophenol	10.168	139	41458	18.616 ng/ul 98
26) 2,4-Dimethylphenol	10.215	107	87057	17.763 ng/ul 96
27) Bis(2-Chloroethoxy)met...	10.450	93	103156	17.718 ng/ul 98
29) 2,4-Dichlorophenol	10.703	162	66880	18.337 ng/ul 99
30) Naphthalene	11.114	128	236310	18.396 ng/ul 99
32) 4-Chloroaniline	11.220	127	101370	18.029 ng/ul 99
33) Hexachlorobutadiene	11.379	225	41220	17.219 ng/ul 97
34) Caprolactam	12.025	113	25454m	16.439 ng/ul > 11/17/21 JU
35) 4-Chloro-3-methylphenol	12.324	107	82634	17.736 ng/ul 98

Data Path : Z:\svoasrv\HPCHEM1\BNA_G\Data\BG111121\
 Data File : BG051023.D
 Acq On : 13 Nov 2021 8:22
 Operator : CG/JU
 Sample : SSTDCCC020EC
 Misc :
 ALS Vial : 63 Sample Multiplier: 1

Instrument :
 BNA_G
 LabSampleId :
 SSTDCCC020EC

Manual IntegrationsAPPROVED

Reviewed By :Jagrut Upadhyay 11/15/2021
 Supervised By :mohammad ahmed 11/17/2021

Quant Time: Nov 15 01:51:56 2021
 Quant Method : Z:\svoasrv\HPCHEM1\BNA_G\Methods\SFAM-EPA-BG110321.M
 Quant Title : SVOA CALIBRATION
 QLast Update : Mon Nov 15 00:27:19 2021
 Response via : Initial Calibration

Compound	R.T.	QIon	Response	Conc	Units	Dev(Min)
36) 2-Methylnaphthalene	12.700	142	157784	18.030	ng/ul	99
37) 1-Methylnaphthalene	12.918	142	159857	18.027	ng/ul	98
39) 1,2,4,5-Tetrachloroben...	13.065	216	81094	18.767	ng/ul	99
40) Hexachlorocyclopentadiene	13.030	237	38779	18.689	ng/ul#	94
41) 2,4,6-Trichlorophenol	13.300	196	55435	19.606	ng/ul	99
42) 2,4,5-Trichlorophenol	13.370	196	60555	19.949	ng/ul	95
43) 1,1'-Biphenyl	13.693	154	210739	19.442	ng/ul	97
44) 2-Chloronaphthalene	13.746	162	164259	19.338	ng/ul	99
45) 2-Nitroaniline	13.946	65	60935	18.056	ng/ul	95
47) Dimethylphthalate	14.299	163	205350	18.102	ng/ul	100
48) 2,6-Dinitrotoluene	14.434	165	42454	17.880	ng/ul	94
50) Acenaphthylene	14.586	152	271193	19.143	ng/ul	98
51) 3-Nitroaniline	14.769	138	47607	19.386	ng/ul	92
52) Acenaphthene	14.921	153	174050	18.684	ng/ul	95
53) 2,4-Dinitrophenol	14.980	184	23295	17.785	ng/ul	90
55) 4-Nitrophenol	15.068	109	31183	16.528	ng/ul	95
56) Dibenzofuran	15.256	168	245701	18.427	ng/ul	99
57) 2,4-Dinitrotoluene	15.215	165	59992	17.704	ng/ul	99
58) 2,3,4,6-Tetrachlorophenol	15.480	232	46805	19.620	ng/ul	97
59) Diethylphthalate	15.656	149	214873	17.695	ng/ul	99
61) Fluorene	15.903	166	192848	18.273	ng/ul	99
62) 4-Chlorophenyl-phenyle...	15.885	204	97688	17.776	ng/ul	99
63) 4-Nitroaniline	15.926	138	46183	18.957	ng/ul	96
66) 4,6-Dinitro-2-methylph...	15.979	198	32414	17.780	ng/ul	94
67) N-Nitrosodiphenylamine	16.102	169	172152	19.974	ng/ul	98
68) 4-Bromophenyl-phenylether	16.784	248	58494	19.072	ng/ul	96
69) Hexachlorobenzene	16.907	284	58530	18.563	ng/ul	98
70) Atrazine	17.042	200	63889	17.481	ng/ul	98
71) Pentachlorophenol	17.254	266	30959	21.386	ng/ul	97
72) Phenanthrene	17.648	178	309925	18.830	ng/ul	99
74) Anthracene	17.742	178	311292	18.850	ng/ul	98
75) 1,2,3,4-Tetrachloroben...	13.664	216	86339	20.565	ng/ul	99
76) Pentachlorobenzene	15.174	250	76657	19.706	ng/ul	96
77) Carbazole	18.006	167	284011	19.188	ng/ul	98
78) Di-n-butylphthalate	18.541	149	363290	18.679	ng/ul	98
80) Fluoranthene	19.645	202	363891	18.384	ng/ul	99
82) Pyrene	20.010	202	356046	18.409	ng/ul	96
83) Butylbenzylphthalate	20.873	149	158016	19.000	ng/ul	96
84) 3,3'-Dichlorobenzidine	21.790	252	119165	19.162	ng/ul	94
85) Benzo(a)anthracene	21.884	228	322677	18.253	ng/ul	99
86) Bis(2-ethylhexyl)phtha...	21.749	149	224621	18.815	ng/ul	99
87) Chrysene	21.954	228	310967	18.414	ng/ul	100
89) Di-n-octyl phthalate	23.024	149	382439	18.806	ng/ul	100
90) Benzo(b)fluoranthene	24.222	252	311195	17.487	ng/ul	98
91) Benzo(k)fluoranthene	24.293	252	299675	17.946	ng/ul	97
93) Benzo(a)pyrene	25.156	252	301121	17.767	ng/ul	97
94) Indeno(1,2,3-cd)pyrene	29.240	276	334798	17.745	ng/ul	96
95) Dibenzo(a,h)anthracene	29.305	278	283277	17.745	ng/ul	99
96) Benzo(g,h,i)perylene	30.480	276	277643	17.580	ng/ul	95

(#) = qualifier out of range (m) = manual integration (+) = signals summed