

Data Path : Z:\svoasrv\HPCHEM1\BNA_G\Data\BG111121\
 Data File : BG051021.D
 Acq On : 13 Nov 2021 7:00
 Operator : CG/JU
 Sample : M4618-06
 Misc :
 ALS Vial : 61 Sample Multiplier: 1

Instrument :
 BNA_G
 ClientSampleId :
 BG226

Integration Parameters: LSCINT.P

Integrator: RTE
 Smoothing : OFF
 Sampling : 1
 Start Thrs : 0.2
 Stop Thrs : 0

Filtering: 5
 Min Area: 0.1 % of largest Peak
 Max Peaks: 100
 Peak Location: TOP

If leading or trailing edge < 100 prefer < Baseline drop else tangent >
 Peak separation: 5

Method : Z:\svoasrv\HPCHEM1\BNA_G\Methods\SFAM-EPA-BG110321.M
 Title : SVOA CALIBRATION

Signal : TIC: BG051021.D\data.ms

peak #	R.T. min	first scan	max scan	last scan	PK TY	peak height	corr. area	corr. % max.	% of total
1	3.566	7	13	27	rVB3	66671	146664	8.49%	0.787%
2	4.036	88	93	107	rBV	55650	111367	6.44%	0.598%
3	4.253	125	130	136	rVB4	4602	8809	0.51%	0.047%
4	4.359	144	148	153	rBV2	5788	8403	0.49%	0.045%
5	4.899	236	240	247	rVB3	12821	22603	1.31%	0.121%
6	6.286	472	476	480	rBV3	2748	3909	0.23%	0.021%
7	6.498	507	512	515	rBV2	949	1853	0.11%	0.010%
8	6.832	566	569	573	rBV3	1556	1902	0.11%	0.010%
9	7.379	656	662	674	rBV	67971	131294	7.60%	0.705%
10	7.549	684	691	703	rBV	223469	389852	22.56%	2.093%
11	7.761	720	727	736	rBV	213113	377817	21.86%	2.028%
12	8.237	800	808	822	rVB	233886	411893	23.84%	2.211%
13	8.936	918	927	938	rBV	184099	334067	19.33%	1.793%
14	9.412	999	1008	1020	rBV	269473	510245	29.53%	2.739%
15	10.134	1122	1131	1143	rBV	238232	441401	25.54%	2.370%
16	10.375	1168	1172	1175	rBV2	1374	1820	0.11%	0.010%
17	10.675	1215	1223	1234	rBV	312123	572335	33.12%	3.073%
18	10.810	1241	1246	1258	rBV2	18787	43413	2.51%	0.233%
19	11.063	1278	1289	1297	rBV	344714	637719	36.91%	3.424%
20	11.192	1303	1311	1325	rBV	260857	511678	29.61%	2.747%
21	11.627	1381	1385	1390	rBV3	2023	2662	0.15%	0.014%
22	11.838	1414	1421	1422	rBV3	2421	3475	0.20%	0.019%
23	11.874	1422	1427	1431	rVB4	6011	9496	0.55%	0.051%
24	12.626	1548	1555	1563	rVB4	5731	10033	0.58%	0.054%
25	13.213	1649	1655	1661	rVB5	1663	2715	0.16%	0.015%
26	13.454	1691	1696	1699	rBV3	2345	3309	0.19%	0.018%
27	13.648	1724	1729	1733	rBV4	2684	3966	0.23%	0.021%
28	13.724	1737	1742	1747	rVV6	3022	5080	0.29%	0.027%
29	14.253	1825	1832	1839	rBV	625003	943840	54.62%	5.067%
30	14.559	1877	1884	1893	rVB	719620	1152712	66.71%	6.188%
31	14.717	1908	1911	1915	rBV4	1604	1839	0.11%	0.010%
32	14.776	1915	1921	1928	rBV	20894	40028	2.32%	0.215%
33	14.858	1928	1935	1945	rVB	533848	869823	50.34%	4.670%
34	14.935	1945	1948	1953	rBV5	2169	3712	0.21%	0.020%
35	15.058	1964	1969	1981	rBV	53751	104878	6.07%	0.563%
36	15.622	2061	2065	2069	rVV2	2043	3358	0.19%	0.018%

Data Path : Z:\svoasrv\HPCHEM1\BNA_G\Data\BG111121\
 Data File : BG051021.D
 Acq On : 13 Nov 2021 7:00
 Operator : CG/JU
 Sample : M4618-06
 Misc :
 ALS Vial : 61 Sample Multiplier: 1

Instrument :
 BNA_G
 ClientSampleId :
 BG226

Integration Parameters: LSCINT.P

Integrator: RTE
 Smoothing : OFF Filtering: 5
 Sampling : 1 Min Area: 0.1 % of largest Peak
 Start Thrs: 0.2 Max Peaks: 100
 Stop Thrs : 0 Peak Location: TOP

If leading or trailing edge < 100 prefer < Baseline drop else tangent >
 Peak separation: 5

Method : Z:\svoasrv\HPCHEM1\BNA_G\Methods\SFAM-EPA-BG110321.M
 Title : SVOA CALIBRATION

37	15.657	2069	2071	2075	rVB5	2379	2765	0.16%	0.015%
38	15.851	2094	2104	2116	rVB	891328	1454623	84.18%	7.809%
39	15.963	2117	2123	2132	rBV	304381	485422	28.09%	2.606%
40	16.086	2141	2144	2147	rVB4	3136	3854	0.22%	0.021%
41	16.292	2177	2179	2183	rBV2	2188	2492	0.14%	0.013%
42	16.357	2186	2190	2198	rBV5	4664	8382	0.49%	0.045%
43	16.580	2223	2228	2238	rVV2	24021	51600	2.99%	0.277%
44	16.644	2238	2239	2245	rVV4	2325	3260	0.19%	0.018%
45	16.844	2268	2273	2274	rBV2	1514	2468	0.14%	0.013%
46	16.868	2275	2277	2283	rVB4	2195	2917	0.17%	0.016%
47	16.932	2285	2288	2291	rBV4	1648	2477	0.14%	0.013%
48	17.191	2328	2332	2336	rBV4	1988	2963	0.17%	0.016%
49	17.402	2362	2368	2372	rVB4	3710	7404	0.43%	0.040%
50	17.608	2396	2403	2410	rBV	633830	988377	57.20%	5.306%
51	17.708	2413	2420	2429	rVV	989489	1568524	90.77%	8.421%
52	17.790	2430	2434	2440	rVB	12608	18659	1.08%	0.100%
53	17.849	2442	2444	2447	rBV3	2211	2105	0.12%	0.011%
54	17.914	2453	2455	2458	rBV3	1783	1834	0.11%	0.010%
55	18.055	2475	2479	2482	rBV4	1688	2534	0.15%	0.014%
56	18.131	2485	2492	2499	rVV2	7876	21377	1.24%	0.115%
57	18.237	2505	2510	2516	rVB6	9726	14504	0.84%	0.078%
58	18.331	2523	2526	2531	rBV7	1449	2299	0.13%	0.012%
59	18.454	2543	2547	2556	rBV6	21174	33971	1.97%	0.182%
60	18.536	2558	2561	2571	rVB8	3093	6547	0.38%	0.035%
61	18.677	2583	2585	2588	rBV4	1961	2341	0.14%	0.013%
62	18.736	2593	2595	2598	rBV3	2438	2971	0.17%	0.016%
63	18.783	2601	2603	2607	rVB5	2021	2362	0.14%	0.013%
64	18.830	2608	2611	2612	rBV3	2392	1885	0.11%	0.010%
65	18.995	2634	2639	2642	rVV7	3602	5963	0.35%	0.032%
66	19.106	2655	2658	2663	rBV6	3150	5231	0.30%	0.028%
67	19.165	2663	2668	2673	rVV	109435	133416	7.72%	0.716%
68	19.253	2680	2683	2684	rBV3	2500	2445	0.14%	0.013%
69	19.371	2699	2703	2704	rBV4	2744	3607	0.21%	0.019%
70	19.388	2704	2706	2710	rVV3	11199	13602	0.79%	0.073%
71	19.429	2710	2713	2719	rVB	37672	52142	3.02%	0.280%
72	19.512	2723	2727	2728	rBV4	2493	3165	0.18%	0.017%
73	19.547	2728	2733	2738	rVV4	12562	21128	1.22%	0.113%
74	19.617	2740	2745	2747	rBV2	14197	22251	1.29%	0.119%
75	19.653	2747	2751	2757	rVV	249471	291991	16.90%	1.568%
76	19.717	2759	2762	2770	rVB10	7727	14756	0.85%	0.079%

Data Path : Z:\svoasrv\HPCHEM1\BNA_G\Data\BG111121\
 Data File : BG051021.D
 Acq On : 13 Nov 2021 7:00
 Operator : CG/JU
 Sample : M4618-06
 Misc :
 ALS Vial : 61 Sample Multiplier: 1

Instrument :
 BNA_G
 ClientSampleId :
 BG226

Integration Parameters: LSCINT.P

Integrator: RTE
 Smoothing : OFF Filtering: 5
 Sampling : 1 Min Area: 0.1 % of largest Peak
 Start Thrs: 0.2 Max Peaks: 100
 Stop Thrs : 0 Peak Location: TOP

If leading or trailing edge < 100 prefer < Baseline drop else tangent >
 Peak separation: 5

Method : Z:\svoasrv\HPCHEM1\BNA_G\Methods\SFAM-EPA-BG110321.M
 Title : SVOA CALIBRATION

77	19.982	2800	2807	2814	rBV	1193344	1727976	100.00%	9.277%
78	20.317	2859	2864	2869	rBV	50365	62057	3.59%	0.333%
79	20.646	2916	2920	2926	rBV3	22802	28000	1.62%	0.150%
80	21.498	3061	3065	3073	rBV4	42315	84470	4.89%	0.453%
81	21.909	3128	3135	3142	rVB2	521773	929170	53.77%	4.988%
82	22.003	3147	3151	3157	rVB	43033	64227	3.72%	0.345%
83	22.062	3157	3161	3168	rBV3	20074	37244	2.16%	0.200%
84	23.425	3389	3393	3397	rVB5	23473	42421	2.45%	0.228%
85	25.087	3664	3676	3688	rVB2	531539	1568556	90.77%	8.421%
86	25.323	3704	3716	3726	rVB2	305865	982623	56.87%	5.275%

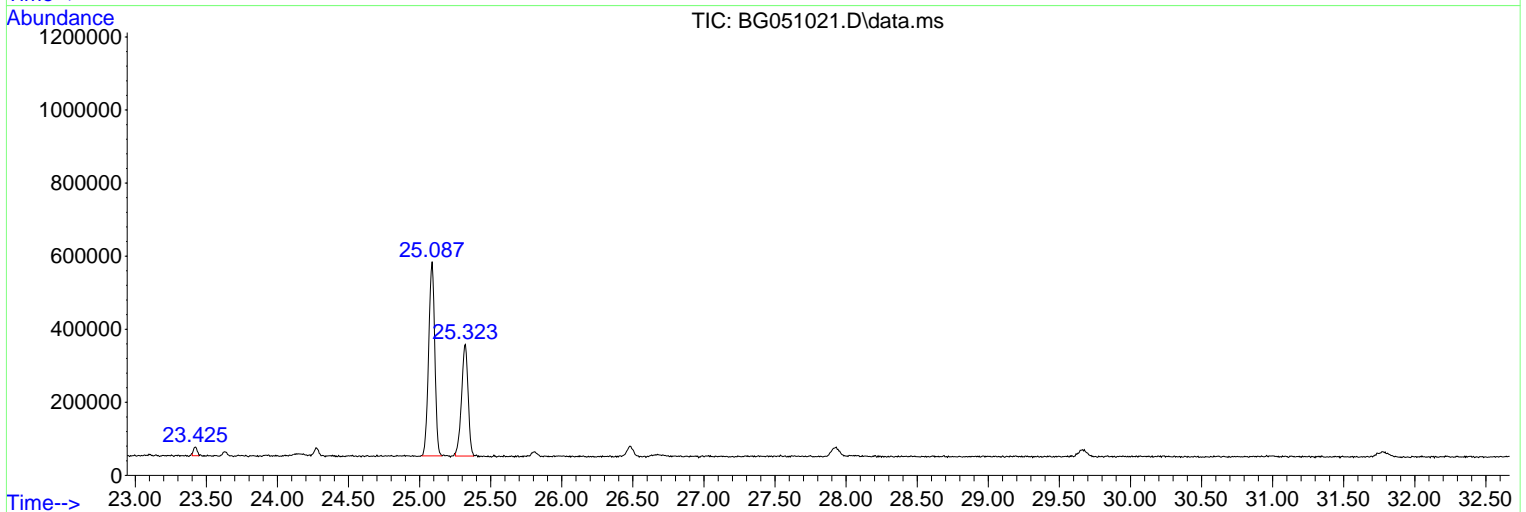
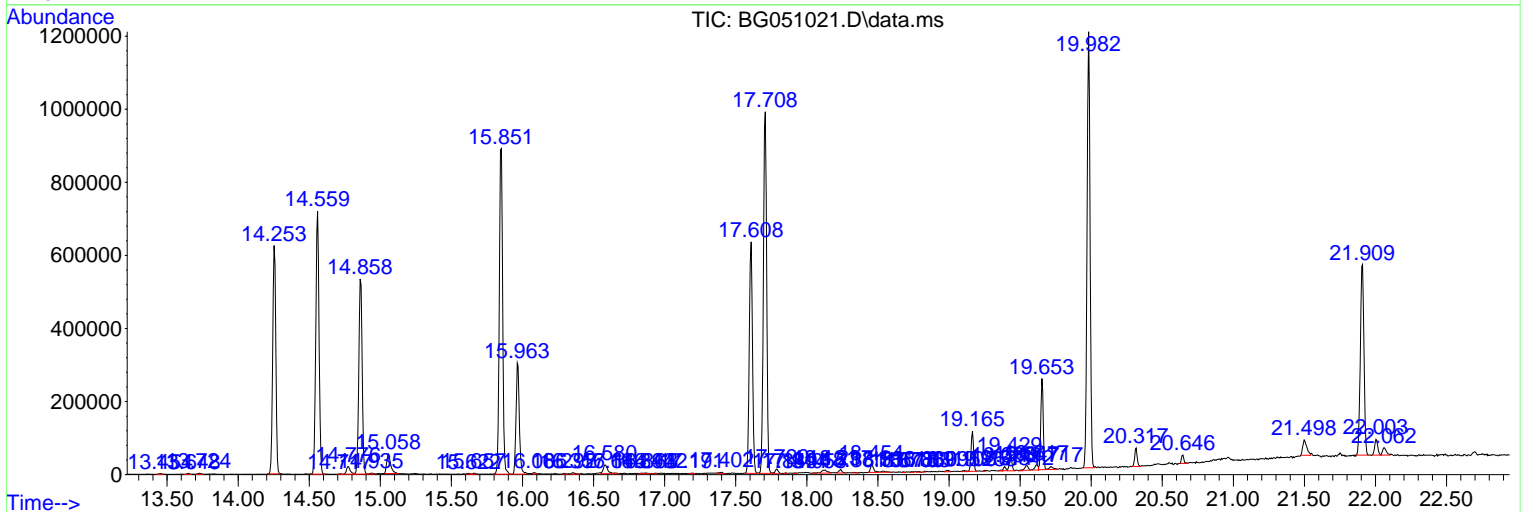
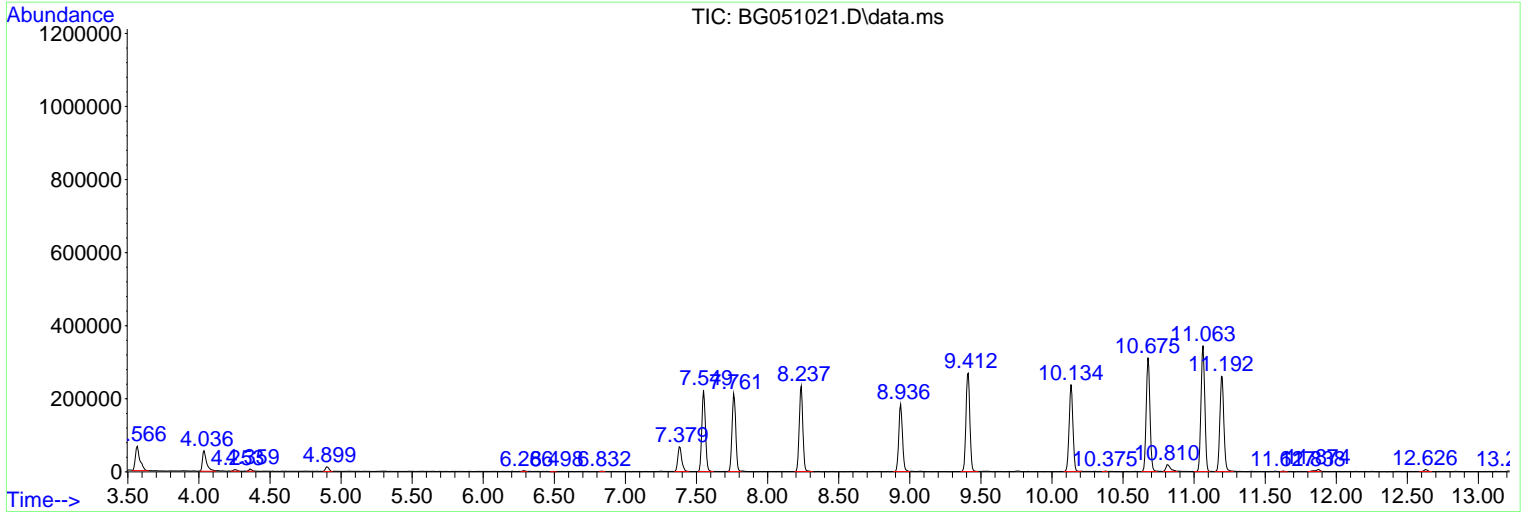
Sum of corrected areas: 18627328

Data Path : Z:\svoasrv\HPCHEM1\BNA_G\Data\BG111121\
 Data File : BG051021.D
 Acq On : 13 Nov 2021 7:00
 Operator : CG/JU
 Sample : M4618-06
 Misc :
 ALS Vial : 61 Sample Multiplier: 1

Instrument :
 BNA_G
ClientSampleId :
 BG226

Quant Method : Z:\svoasrv\HPCHEM1\BNA_G\Methods\SFAM-EPA-BG110321.M
 Quant Title : SVOA CALIBRATION

TIC Library : C:\DATABASE\NIST20.L
 TIC Integration Parameters: LSCINT.P



Data Path : Z:\svoasrv\HPCHEM1\BNA_G\Data\BG111121\
 Data File : BG051021.D
 Acq On : 13 Nov 2021 7:00
 Operator : CG/JU
 Sample : M4618-06
 Misc :
 ALS Vial : 61 Sample Multiplier: 1

Instrument :
 BNA_G
 ClientSampleId :
 BG226

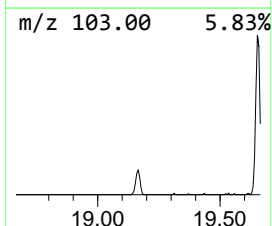
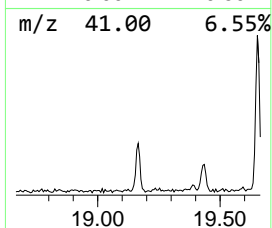
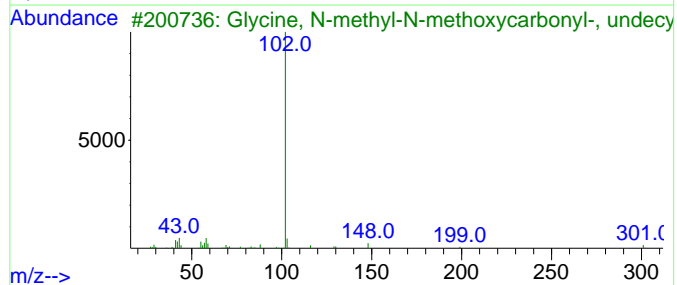
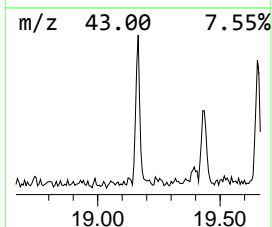
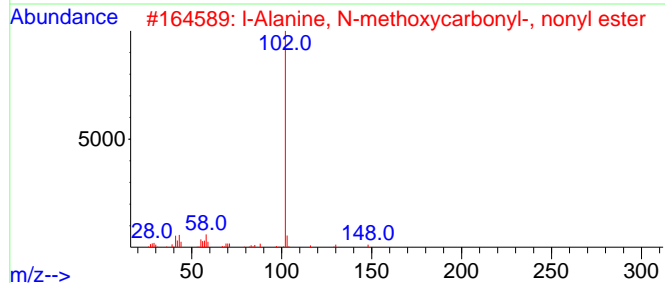
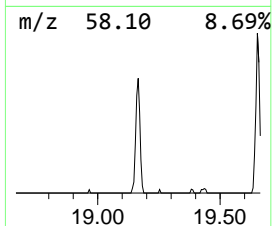
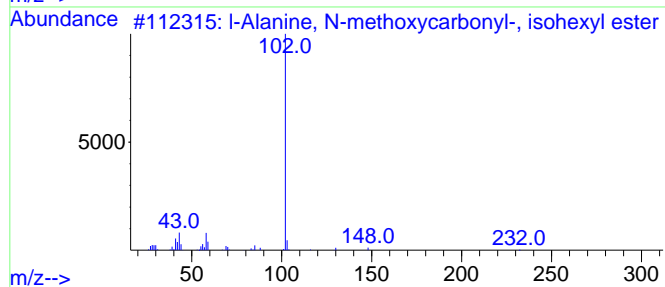
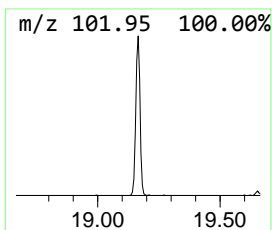
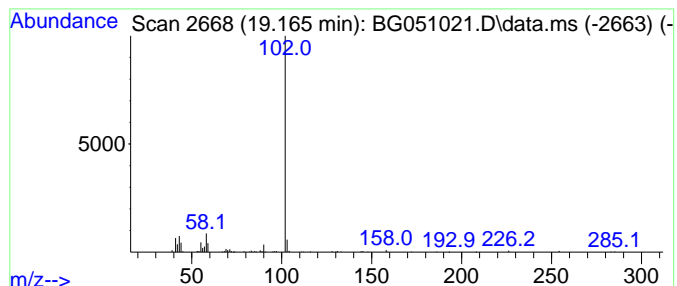
Quant Method : Z:\svoasrv\HPCHEM1\BNA_G\Methods\SFAM-EPA-BG110321.M
 Quant Title : SVOA CALIBRATION

TIC Library : C:\DATABASE\NIST20.L
 TIC Integration Parameters: LSCINT.P

 Peak Number 1 l-Alanine, N-methoxycarbony... Concentration Rank 2

R.T.	EstConc	Area	Relative to ISTD	R.T.
19.165	2.70 ng/ul	133416	Phenanthrene-d10	17.608

Hit#	of	5	Tentative ID	MW	MolForm	CAS#	Qual
1			l-Alanine, N-methoxycarbonyl-, i...	231	C11H21N04	1000313-37-5	72
2			l-Alanine, N-methoxycarbonyl-, n...	273	C14H27N04	1000313-37-8	72
3			Glycine, N-methyl-N-methoxycarbo...	301	C16H31N04	1000320-61-2	72
4			Glycine, N-methyl-N-methoxycarbo...	287	C15H29N04	1000320-61-1	72
5			l-Alanine, N-methoxycarbonyl-, d...	287	C15H29N04	1000313-37-9	72



Data Path : Z:\svoasrv\HPCHEM1\BNA_G\Data\BG111121\
 Data File : BG051021.D
 Acq On : 13 Nov 2021 7:00
 Operator : CG/JU
 Sample : M4618-06
 Misc :
 ALS Vial : 61 Sample Multiplier: 1

Instrument :
 BNA_G
 ClientSampleId :
 BG226

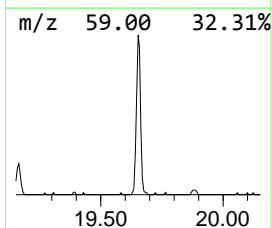
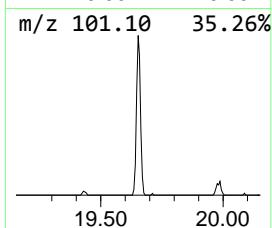
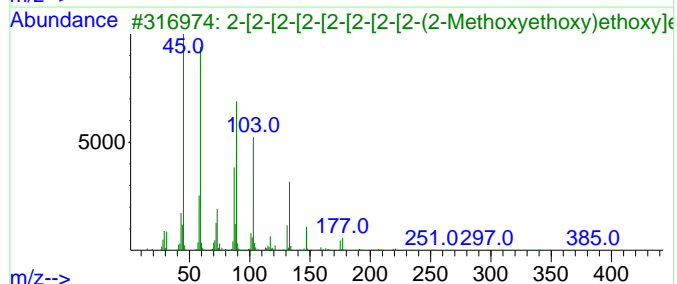
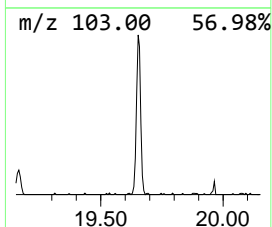
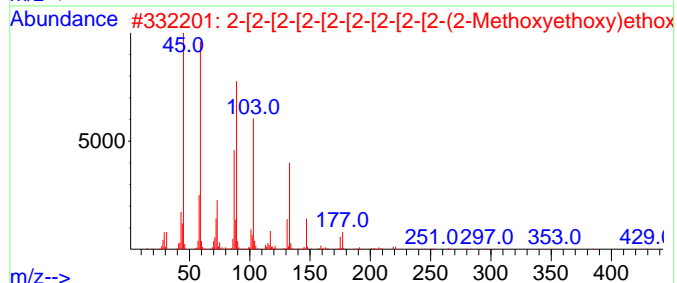
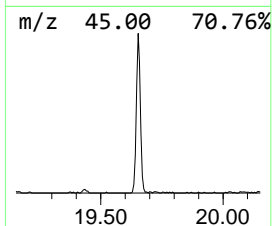
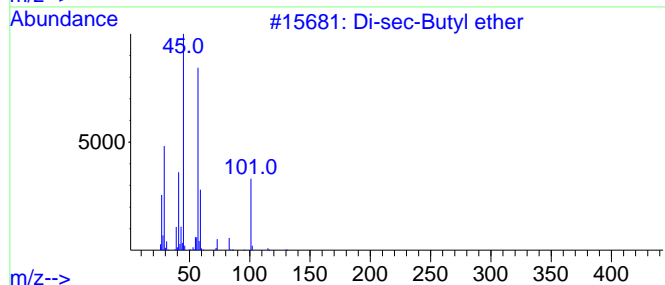
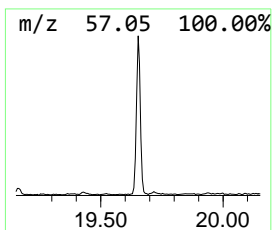
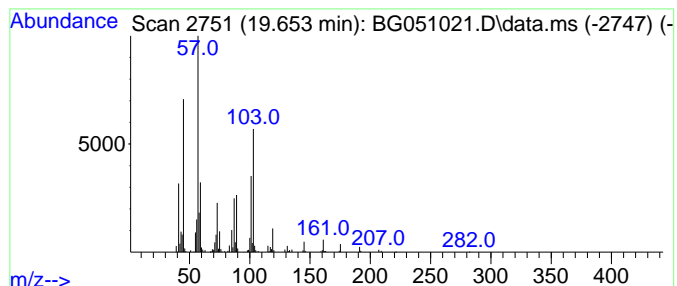
Quant Method : Z:\svoasrv\HPCHEM1\BNA_G\Methods\SFAM-EPA-BG110321.M
 Quant Title : SVOA CALIBRATION

TIC Library : C:\DATABASE\NIST20.L
 TIC Integration Parameters: LSCINT.P

 Peak Number 2 unknown-01 Concentration Rank 1

R.T.	EstConc	Area	Relative to ISTD	R.T.
19.653	5.91 ng/ul	291991	Phenanthrene-d10	17.608

Hit#	of	5	Tentative ID	MW	MolForm	CAS#	Qual
1			Di-sec-Butyl ether	130	C8H18O	006863-58-7	35
2			2-[2-[2-[2-[2-[2-[2-(2-Met...	472	C21H44O11	027425-92-9	27
3			2-[2-[2-[2-[2-[2-(2-Methox...	428	C19H40O10	006048-68-6	27
4			2-[2-[2-[2-[2-(2-Methoxyethox...	340	C15H32O8	004437-01-8	27
5			Ethanol, 2-butoxy-	118	C6H14O2	000111-76-2	25



Data Path : Z:\svoasrv\HPCHEM1\BNA_G\Data\BG111121\
Data File : BG051021.D
Acq On : 13 Nov 2021 7:00
Operator : CG/JU
Sample : M4618-06
Misc :
ALS Vial : 61 Sample Multiplier: 1

Instrument :
BNA_G
ClientSampleId :
BG226

Quant Method : Z:\svoasrv\HPCHEM1\BNA_G\Methods\SFAM-EPA-BG110321.M
Quant Title : SVOA CALIBRATION

TIC Library : C:\DATABASE\NIST0.L
TIC Integration Parameters: LSCINT.P

TIC Top Hit name	RT	EstConc	Units	Response	--Internal Standard--			
					#	RT	Resp	Conc
l-Alanine, N-me...	19.165	2.7	ng/ul	133416	4	17.608	988377	20.0
unknown-01	19.653	5.9	ng/ul	291991	4	17.608	988377	20.0