

Data Path : Z:\svoasrv\HPCHEM1\BNA_G\Data\BG111222\
 Data File : BG055590.D
 Acq On : 12 Nov 2022 15:11
 Operator : CG/JU
 Sample : N5431-01
 Misc :
 ALS Vial : 6 Sample Multiplier: 1

Instrument :
 BNA_G
 ClientSampleId :
 20221170-COMP-05-MODIFIED-ELUTRIATE

Quant Time: Nov 14 03:27:18 2022
 Quant Method : Z:\svoasrv\HPCHEM1\BNA_G\Methods\8270-BG110922.M
 Quant Title : ASP BNA STANDARDS FOR 5 POINT CALIBRATION
 QLast Update : Thu Nov 10 03:39:46 2022
 Response via : Initial Calibration

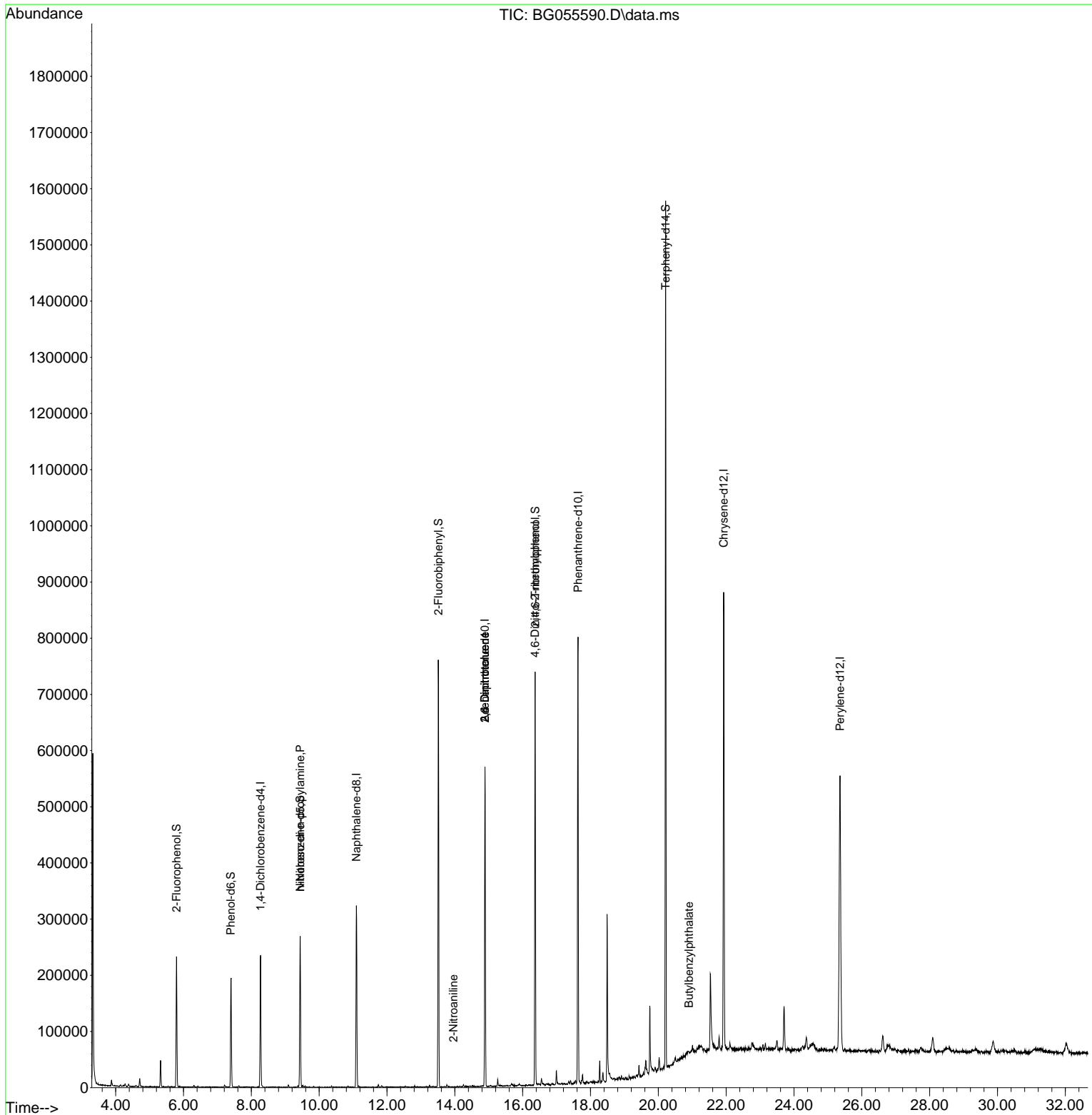
Compound	R.T.	QIon	Response	Conc	Units	Dev(Min)
Internal Standards						
1) 1,4-Dichlorobenzene-d4	8.271	152	67610	20.000	ng	0.00
21) Naphthalene-d8	11.097	136	274148	20.000	ng	0.00
39) Acenaphthene-d10	14.887	164	205988	20.000	ng	0.00
64) Phenanthrene-d10	17.630	188	525444	20.000	ng	0.00
76) Chrysene-d12	21.925	240	535469	20.000	ng	0.00
86) Perylene-d12	25.357	264	569878	20.000	ng	0.00
System Monitoring Compounds						
5) 2-Fluorophenol	5.791	112	98395	27.720	ng	0.00
7) Phenol-d6	7.395	99	109906	22.415	ng	0.00
23) Nitrobenzene-d5	9.440	82	154439	38.190	ng	0.00
42) 2,4,6-Tribromophenol	16.367	330	150119	74.692	ng	0.00
45) 2-Fluorobiphenyl	13.512	172	395953	28.995	ng	0.00
79) Terphenyl-d14	20.216	244	801008	30.046	ng	0.00
Target Compounds						
19) n-Nitroso-di-n-propyla...	9.440	70	21194	5.230	ng	# 79
48) 2-Nitroaniline	13.958	65	61	3.806	ng	# 8
51) 2,6-Dinitrotoluene	14.887	165	27389	12.453	ng	# 22
57) 2,4-Dinitrotoluene	14.887	165	27389	10.590	ng	# 23
65) 4,6-Dinitro-2-methylph...	16.361	198	257	2.087	ng	# 97
80) Butylbenzylphthalate	20.903	149	650	3.408	ng	# 82

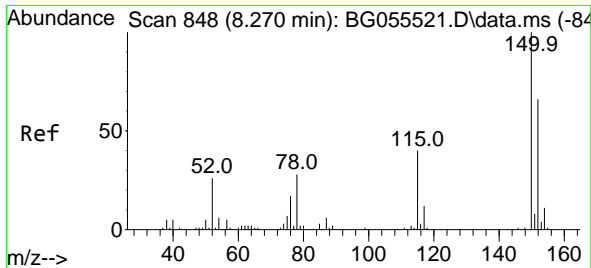
(#) = qualifier out of range (m) = manual integration (+) = signals summed

Data Path : Z:\svoasrv\HPCHEM1\BNA_G\Data\BG111222\
 Data File : BG055590.D
 Acq On : 12 Nov 2022 15:11
 Operator : CG/JU
 Sample : N5431-01
 Misc :
 ALS Vial : 6 Sample Multiplier: 1

Instrument :
 BNA_G
 ClientSampleId :
 20221170-COMP-05-MODIFIED-ELUTRIATE

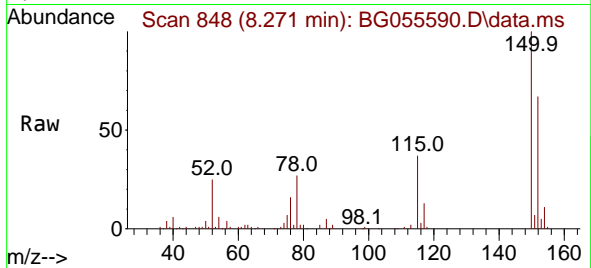
Quant Time: Nov 14 03:27:18 2022
 Quant Method : Z:\svoasrv\HPCHEM1\BNA_G\Methods\8270-BG110922.M
 Quant Title : ASP BNA STANDARDS FOR 5 POINT CALIBRATION
 QLast Update : Thu Nov 10 03:39:46 2022
 Response via : Initial Calibration



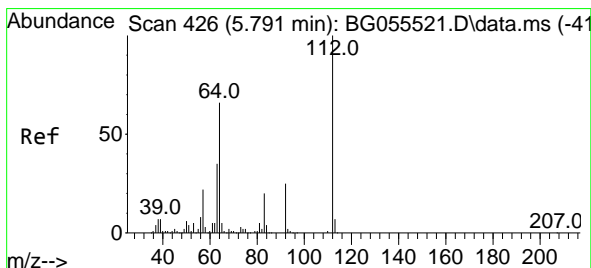
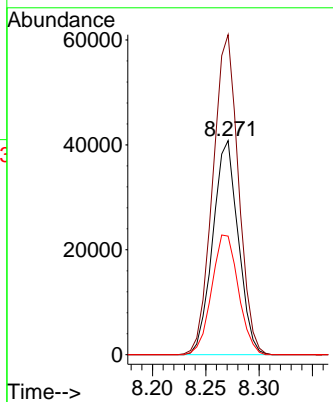
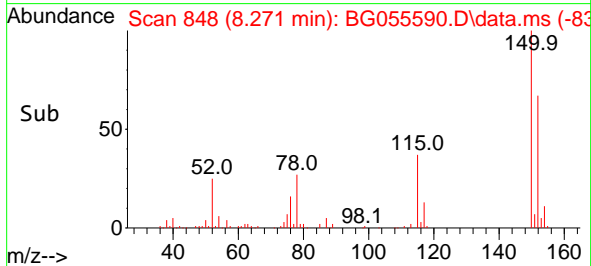


#1
 1,4-Dichlorobenzene-d4
 Concen: 20.000 ng
 RT: 8.271 min Scan# 84
 Delta R.T. 0.001 min
 Lab File: BG055590.D
 Acq: 12 Nov 2022 15:11

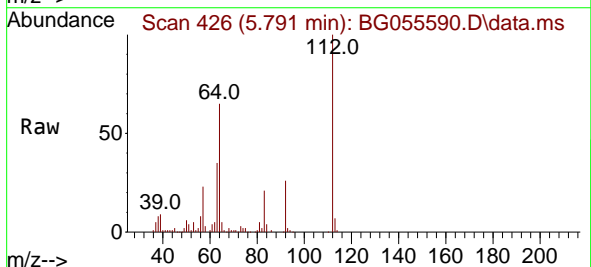
Instrument :
 BNA_G
 ClientSampleId :
 20221170-COMP-05-MODIFIED-ELUTRIATE



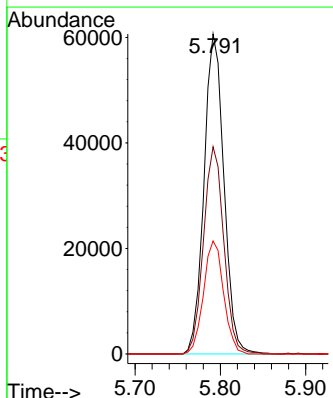
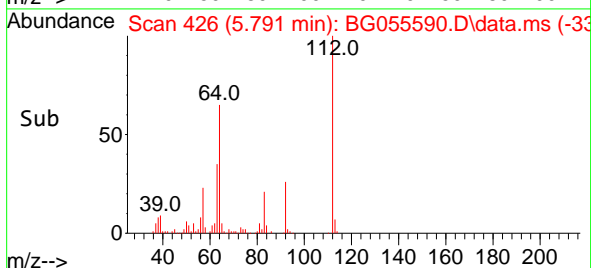
Tgt Ion:152 Resp: 67610
 Ion Ratio Lower Upper
 152 100
 150 149.4 121.0 181.4
 115 55.3 47.8 71.8

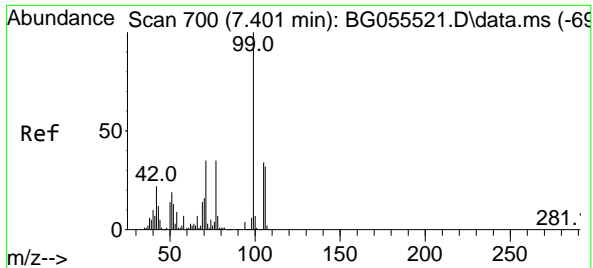


#5
 2-Fluorophenol
 Concen: 27.720 ng
 RT: 5.791 min Scan# 426
 Delta R.T. 0.000 min
 Lab File: BG055590.D
 Acq: 12 Nov 2022 15:11



Tgt Ion:112 Resp: 98395
 Ion Ratio Lower Upper
 112 100
 64 64.7 52.6 78.8
 63 35.3 28.3 42.5



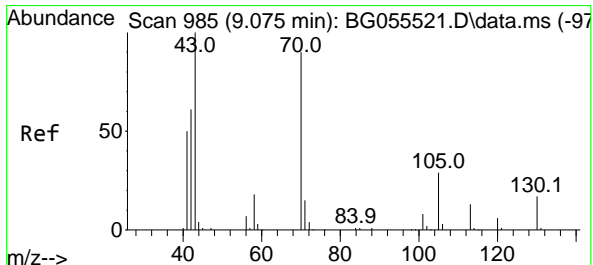
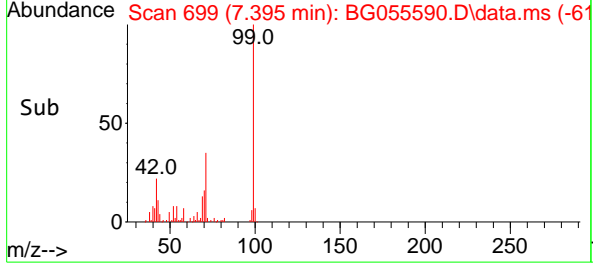
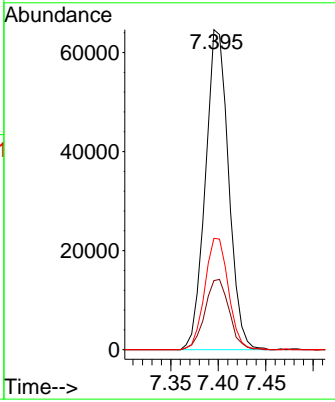
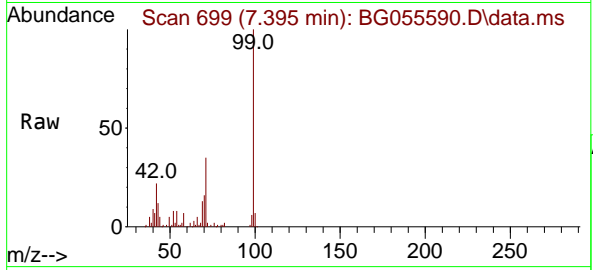


#7
 Phenol-d6
 Concen: 22.415 ng
 RT: 7.395 min Scan# 61
 Delta R.T. -0.006 min
 Lab File: BG055590.D
 Acq: 12 Nov 2022 15:11

Instrument :
 BNA_G
ClientSampleId :
 20221170-COMP-05-MODIFIED-ELUTRIATE

Tgt Ion: 99 Resp: 109906

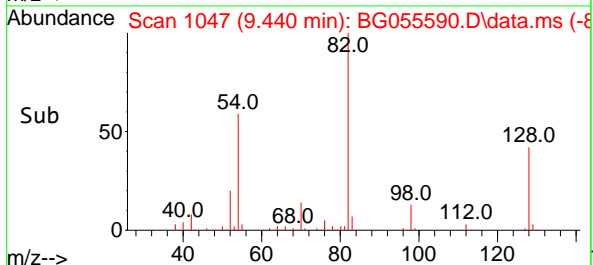
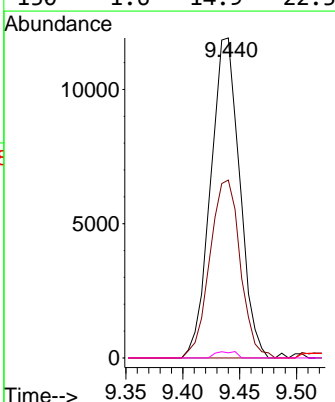
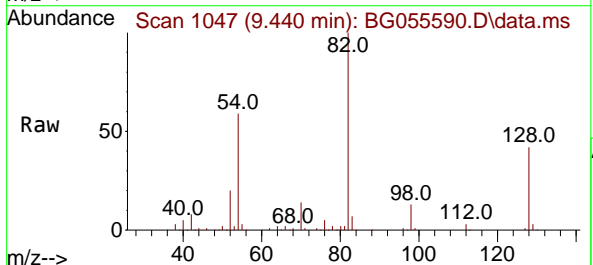
Ion	Ratio	Lower	Upper
99	100		
42	21.6	17.5	26.3
71	34.8	28.3	42.5

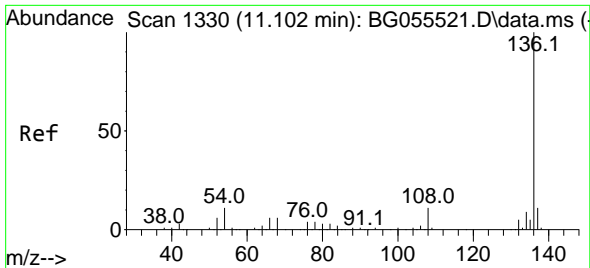


#19
 n-Nitroso-di-n-propylamine
 Concen: 5.230 ng
 RT: 9.440 min Scan# 1047
 Delta R.T. 0.365 min
 Lab File: BG055590.D
 Acq: 12 Nov 2022 15:11

Tgt Ion: 70 Resp: 21194

Ion	Ratio	Lower	Upper
70	100		
42	55.6	54.8	82.2
101	0.0	6.8	10.2#
130	1.6	14.9	22.3#



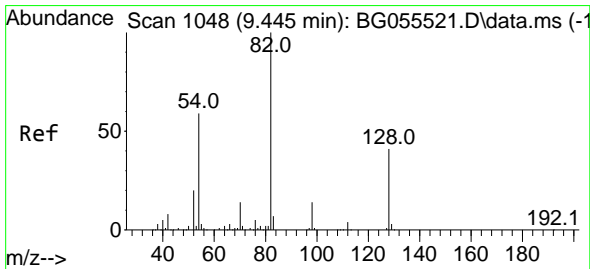
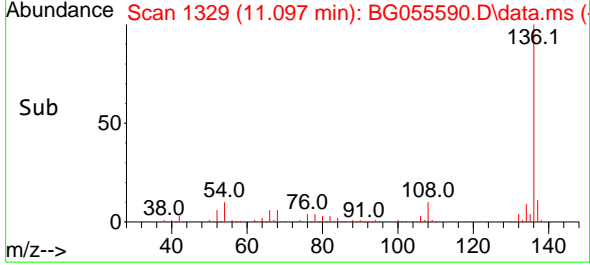
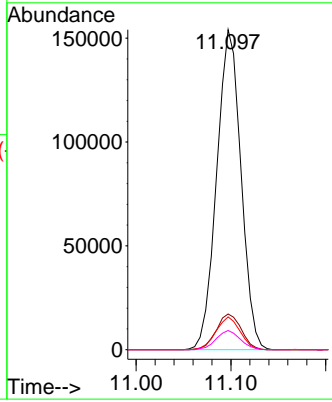
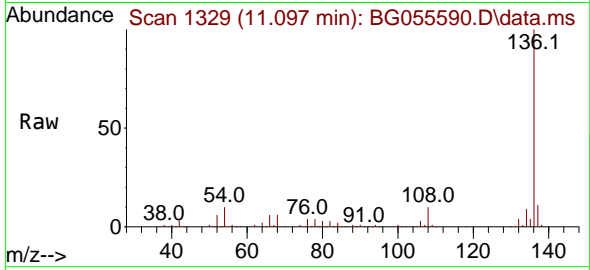


#21
 Naphthalene-d8
 Concen: 20.000 ng
 RT: 11.097 min Scan# 11
 Delta R.T. -0.005 min
 Lab File: BG055590.D
 Acq: 12 Nov 2022 15:11

Instrument : BNA_G
 ClientSampleId : 20221170-COMP-05-MODIFIED-ELUTRIATE

Tgt Ion:136 Resp: 274148

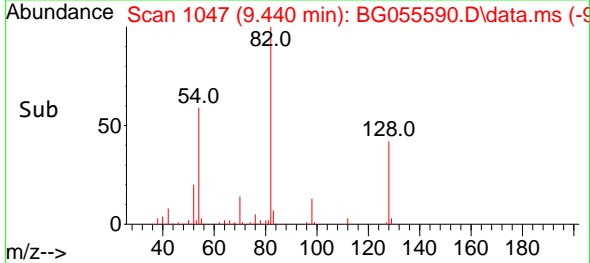
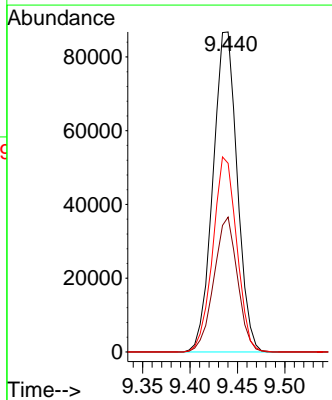
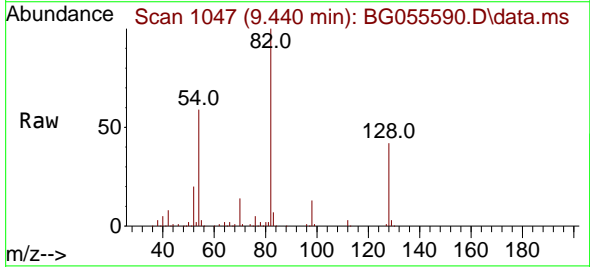
Ion	Ratio	Lower	Upper
136	100		
137	11.1	8.6	12.8
54	10.2	8.6	12.8
68	6.0	4.6	6.8

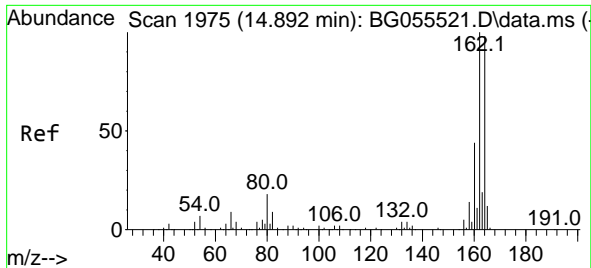


#23
 Nitrobenzene-d5
 Concen: 38.190 ng
 RT: 9.440 min Scan# 1047
 Delta R.T. -0.005 min
 Lab File: BG055590.D
 Acq: 12 Nov 2022 15:11

Tgt Ion: 82 Resp: 154439

Ion	Ratio	Lower	Upper
82	100		
128	42.2	32.6	49.0
54	59.0	47.3	70.9



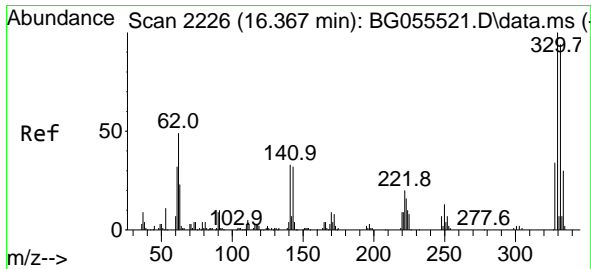
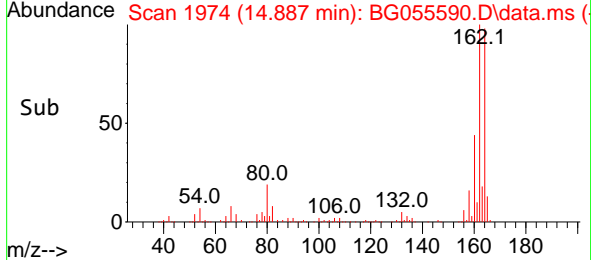
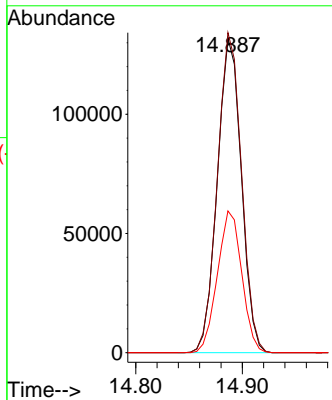
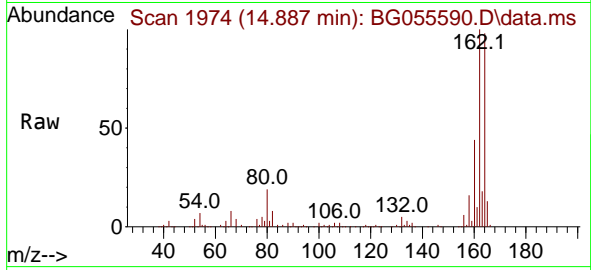


#39
 Acenaphthene-d10
 Concen: 20.000 ng
 RT: 14.887 min Scan# 1974
 Delta R.T. -0.005 min
 Lab File: BG055590.D
 Acq: 12 Nov 2022 15:11

Instrument : BNA_G
 ClientSampleId : 20221170-COMP-05-MODIFIED-ELUTRIATE

Tgt Ion:164 Resp: 205988

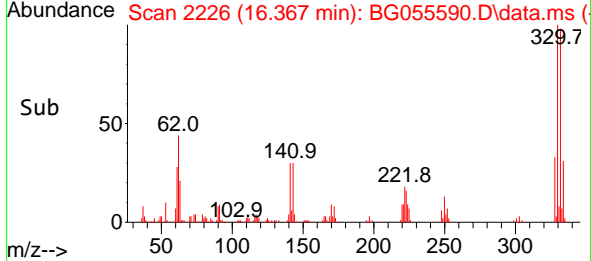
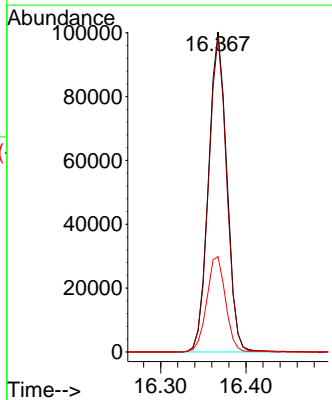
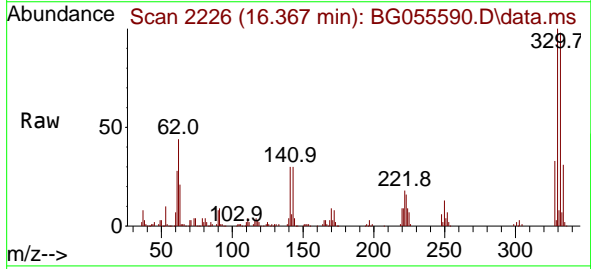
Ion	Ratio	Lower	Upper
164	100		
162	101.8	81.3	121.9
160	45.1	35.9	53.9

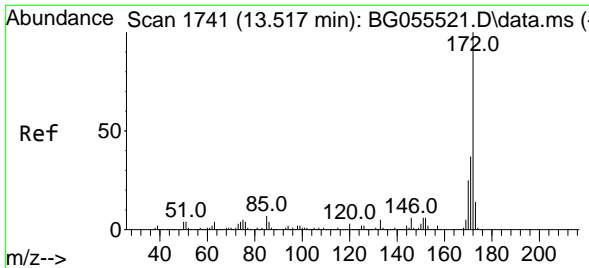


#42
 2,4,6-Tribromophenol
 Concen: 74.692 ng
 RT: 16.367 min Scan# 2226
 Delta R.T. 0.000 min
 Lab File: BG055590.D
 Acq: 12 Nov 2022 15:11

Tgt Ion:330 Resp: 150119

Ion	Ratio	Lower	Upper
330	100		
332	97.2	77.4	116.2
141	30.4	25.4	38.2

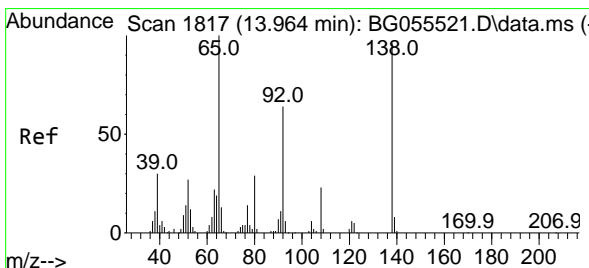
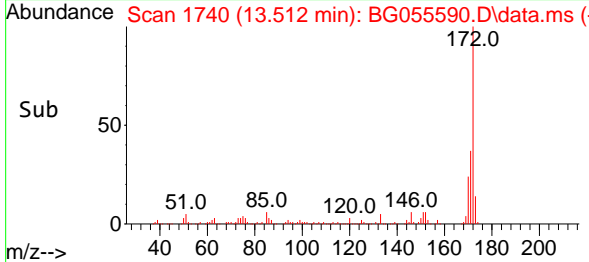
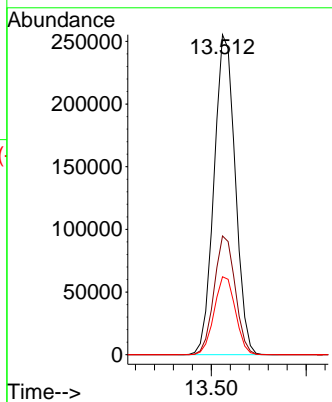
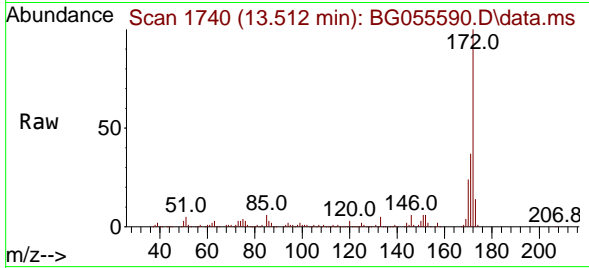




#45
 2-Fluorobiphenyl
 Concen: 28.995 ng
 RT: 13.512 min Scan# 11
 Delta R.T. -0.005 min
 Lab File: BG055590.D
 Acq: 12 Nov 2022 15:11

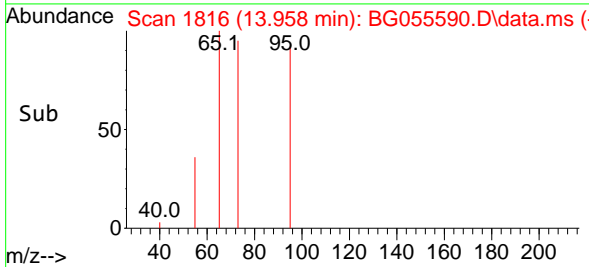
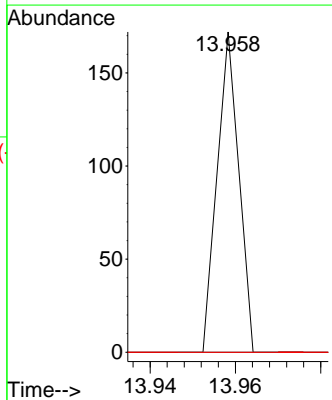
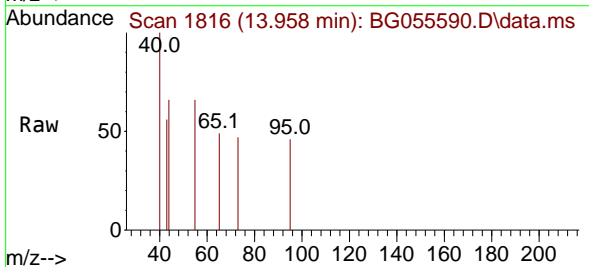
Instrument : BNA_G
 ClientSampleId : 20221170-COMP-05-MODIFIED-ELUTRIATE

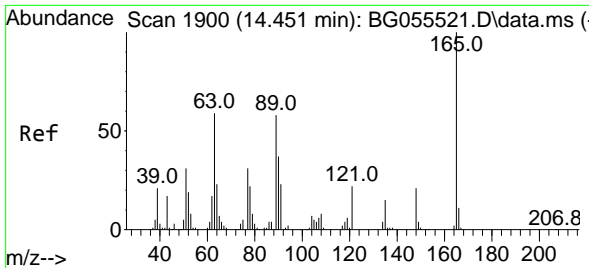
Tgt Ion	Resp	Lower	Upper
172	100		
171	37.1	29.7	44.5
170	24.3	19.8	29.6



#48
 2-Nitroaniline
 Concen: 3.806 ng
 RT: 13.958 min Scan# 1816
 Delta R.T. -0.006 min
 Lab File: BG055590.D
 Acq: 12 Nov 2022 15:11

Tgt Ion	Resp	Lower	Upper
65	100		
92	0.0	51.6	77.4#
138	0.0	77.0	115.4#



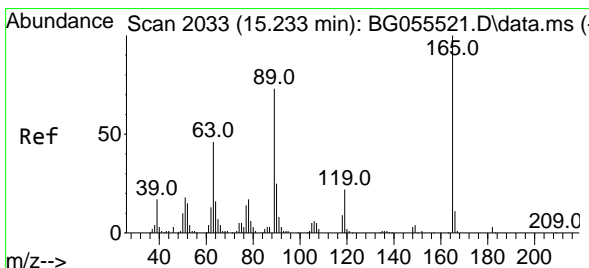
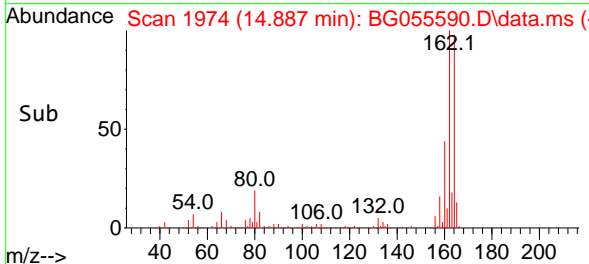
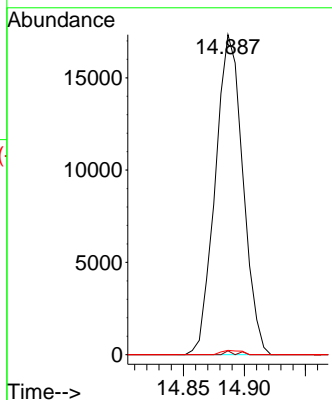
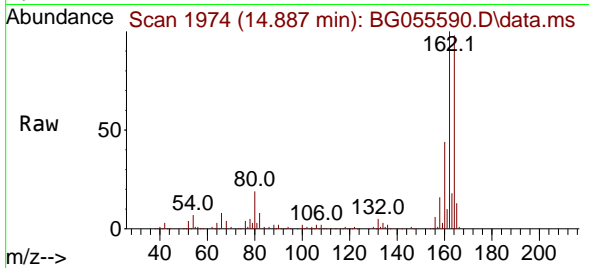


#51
 2,6-Dinitrotoluene
 Concen: 12.453 ng
 RT: 14.887 min Scan# 1900
 Delta R.T. 0.436 min
 Lab File: BG055590.D
 Acq: 12 Nov 2022 15:11

Instrument : BNA_G
 ClientSampleId : 20221170-COMP-05-MODIFIED-ELUTRIATE

Tgt Ion:165 Resp: 27389

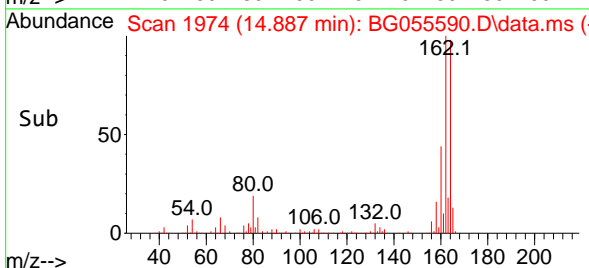
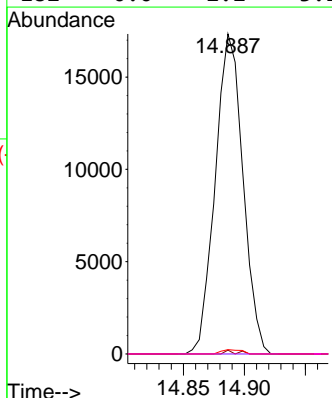
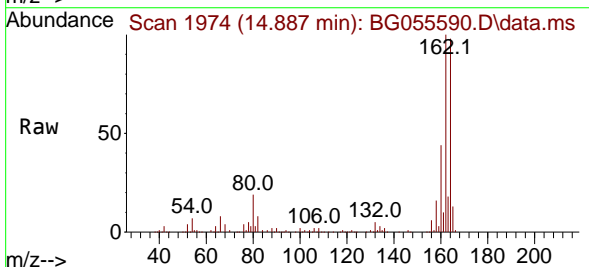
Ion	Ratio	Lower	Upper
165	100		
63	1.2	50.1	75.1#
89	1.4	46.5	69.7#

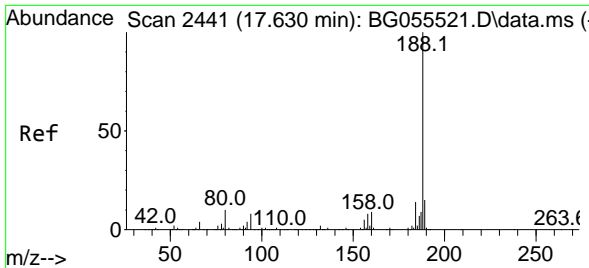


#57
 2,4-Dinitrotoluene
 Concen: 10.590 ng
 RT: 14.887 min Scan# 1974
 Delta R.T. -0.346 min
 Lab File: BG055590.D
 Acq: 12 Nov 2022 15:11

Tgt Ion:165 Resp: 27389

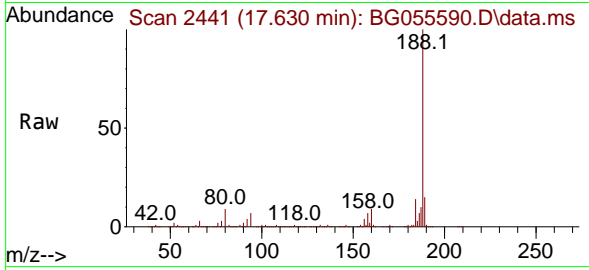
Ion	Ratio	Lower	Upper
165	100		
63	1.2	37.0	55.4#
89	1.4	58.6	87.8#
182	0.0	2.2	3.2#





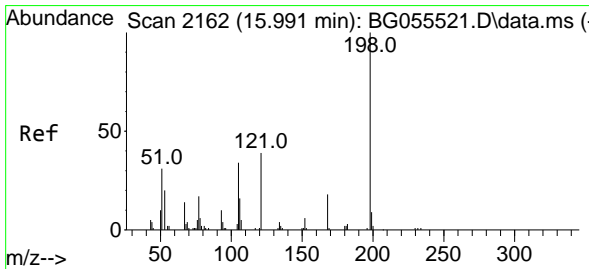
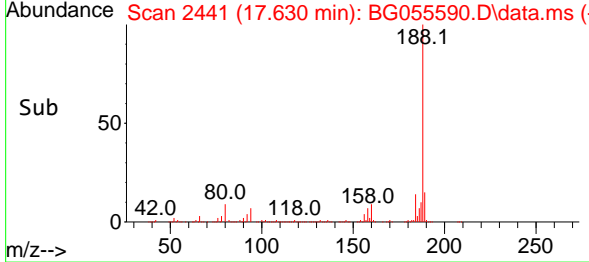
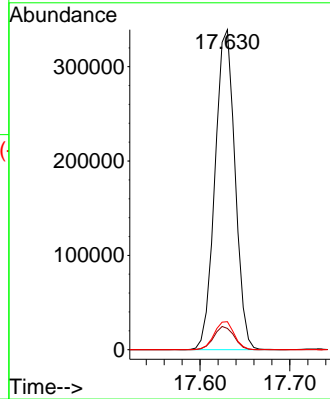
#64
 Phenanthrene-d10
 Concen: 20.000 ng
 RT: 17.630 min Scan# 24
 Delta R.T. 0.000 min
 Lab File: BG055590.D
 Acq: 12 Nov 2022 15:11

Instrument : BNA_G
 ClientSampleId : 20221170-COMP-05-MODIFIED-ELUTRIATE

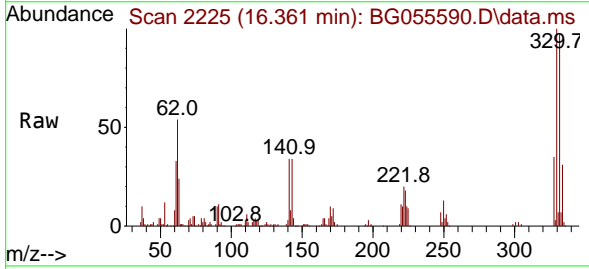


Tgt Ion:188 Resp: 525444

Ion	Ratio	Lower	Upper
188	100		
94	6.7	6.4	9.6
80	8.8	7.6	11.4

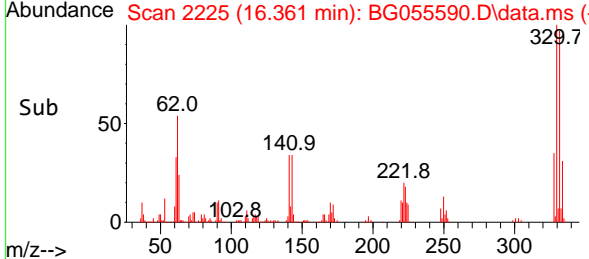
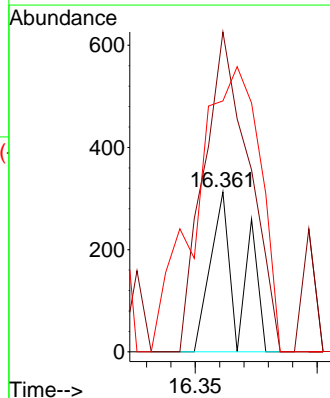


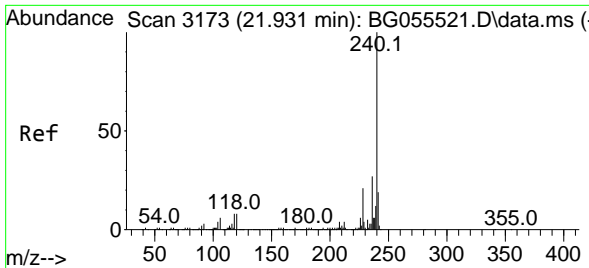
#65
 4,6-Dinitro-2-methylphenol
 Concen: 2.087 ng
 RT: 16.361 min Scan# 2225
 Delta R.T. 0.370 min
 Lab File: BG055590.D
 Acq: 12 Nov 2022 15:11



Tgt Ion:198 Resp: 257

Ion	Ratio	Lower	Upper
198	100		
51	48.2	24.7	64.7
105	37.8	17.6	57.6



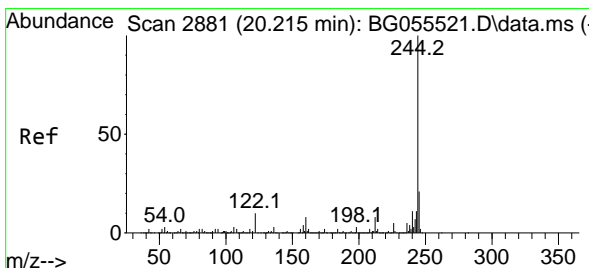
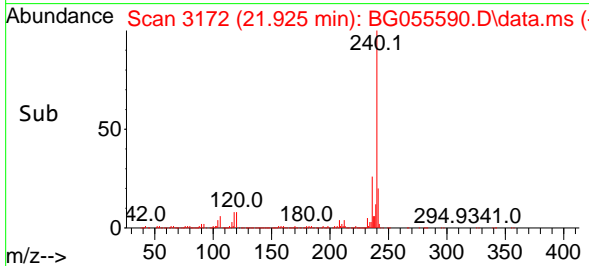
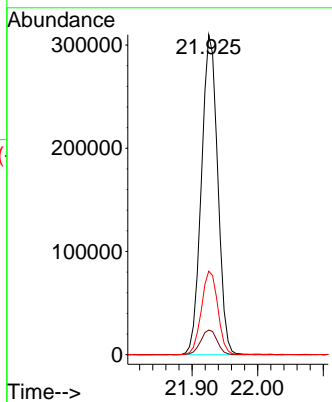
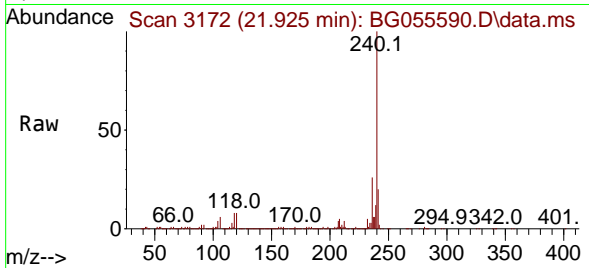


#76
 Chrysene-d12
 Concen: 20.000 ng
 RT: 21.925 min Scan# 31
 Delta R.T. -0.006 min
 Lab File: BG055590.D
 Acq: 12 Nov 2022 15:11

Instrument : BNA_G
 ClientSampleId : 20221170-COMP-05-MODIFIED-ELUTRIATE

Tgt Ion:240 Resp: 535469

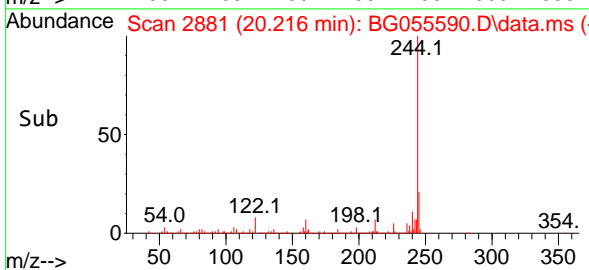
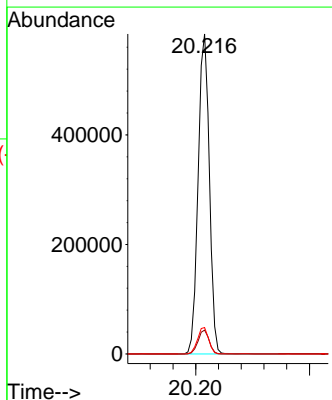
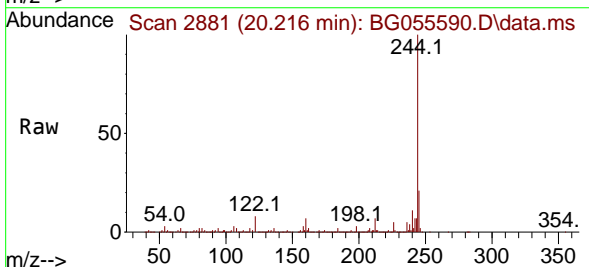
Ion	Ratio	Lower	Upper
240	100		
120	7.7	6.1	9.1
236	26.1	21.4	32.0

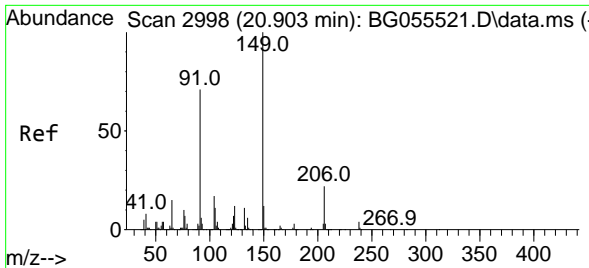


#79
 Terphenyl-d14
 Concen: 30.046 ng
 RT: 20.216 min Scan# 2881
 Delta R.T. 0.001 min
 Lab File: BG055590.D
 Acq: 12 Nov 2022 15:11

Tgt Ion:244 Resp: 801008

Ion	Ratio	Lower	Upper
244	100		
212	7.5	6.5	9.7
122	8.2	7.7	11.5



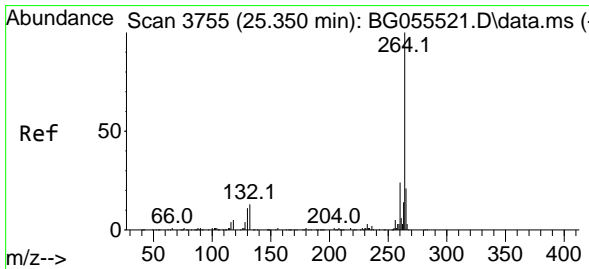
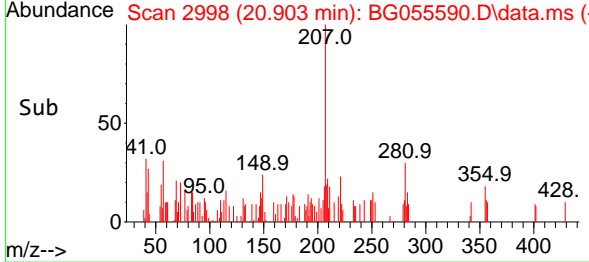
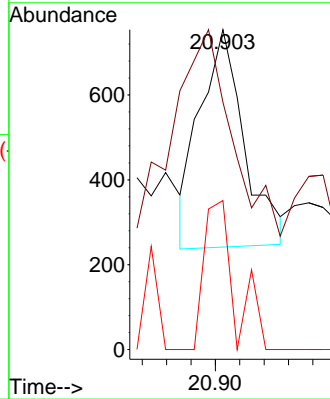
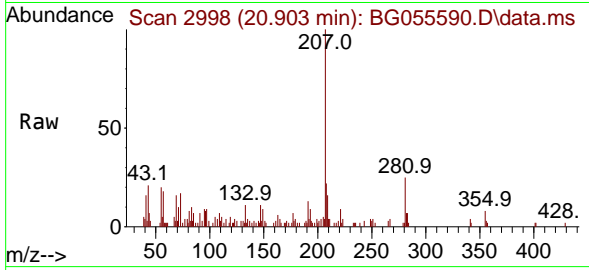


#80
 Butylbenzylphthalate
 Concen: 3.408 ng
 RT: 20.903 min Scan# 2998
 Delta R.T. 0.000 min
 Lab File: BG055590.D
 Acq: 12 Nov 2022 15:11

Instrument : BNA_G
 ClientSampleId : 20221170-COMP-05-MODIFIED-ELUTRIATE

Tgt Ion:149 Resp: 650

Ion	Ratio	Lower	Upper
149	100		
91	77.3	56.8	85.2
206	46.6	17.3	25.9#



#86
 Perylene-d12
 Concen: 20.000 ng
 RT: 25.357 min Scan# 3756
 Delta R.T. 0.007 min
 Lab File: BG055590.D
 Acq: 12 Nov 2022 15:11

Tgt Ion:264 Resp: 569878

Ion	Ratio	Lower	Upper
264	100		
260	24.6	19.4	29.2
265	21.7	17.1	25.7

