

Data Path : Z:\svoasrv\HPCHEM1\BNA\_G\Data\BG111222\  
 Data File : BG055587.D  
 Acq On : 12 Nov 2022 12:55  
 Operator : CG/JU  
 Sample : PB148983BL  
 Misc :  
 ALS Vial : 3 Sample Multiplier: 1

Instrument :  
 BNA\_G  
 ClientSampleId :  
 PB148983BL

Integration Parameters: rteint.p  
 Integrator: RTE  
 Smoothing : ON Filtering: 5  
 Sampling : 1 Min Area: 3 % of largest Peak  
 Start Thrs: 0.2 Max Peaks: 100  
 Stop Thrs : 0 Peak Location: TOP

If leading or trailing edge < 100 prefer < Baseline drop else tangent >  
 Peak separation: 5

Method : Z:\svoasrv\HPCHEM1\BNA\_G\Methods\8270-BG110922.M  
 Title : ASP BNA STANDARDS FOR 5 POINT CALIBRATION

Signal : TIC: BG055587.D\data.ms

peak #	R.T. min	first scan	max scan	last scan	PK TY	peak height	corr. area	corr. % max.	% of total
1	4.710	235	242	250	rBV	37873	60709	1.58%	0.409%
2	5.321	340	346	355	rBV	190405	302366	7.85%	2.039%
3	5.797	420	427	437	rBV	762785	1212165	31.48%	8.173%
4	7.407	693	701	711	rBV	766858	1301345	33.80%	8.774%
5	8.270	840	848	855	rVB	132367	222019	5.77%	1.497%
6	9.440	1039	1047	1058	rBV	437849	763333	19.82%	5.147%
7	11.097	1321	1329	1336	rBV	179259	326728	8.48%	2.203%
8	13.517	1733	1741	1748	rVB	1306216	1978565	51.38%	13.340%
9	14.892	1967	1975	1982	rVB	326555	516965	13.43%	3.486%
10	16.367	2219	2226	2241	rBV	1156339	1798203	46.70%	12.124%
11	17.630	2434	2441	2448	rBV	501897	737148	19.14%	4.970%
12	20.221	2875	2882	2887	rBV	2795535	3850667	100.00%	25.962%
13	21.925	3166	3172	3180	rBV2	485961	831178	21.59%	5.604%
14	25.356	3746	3756	3773	rVB2	286067	930346	24.16%	6.273%

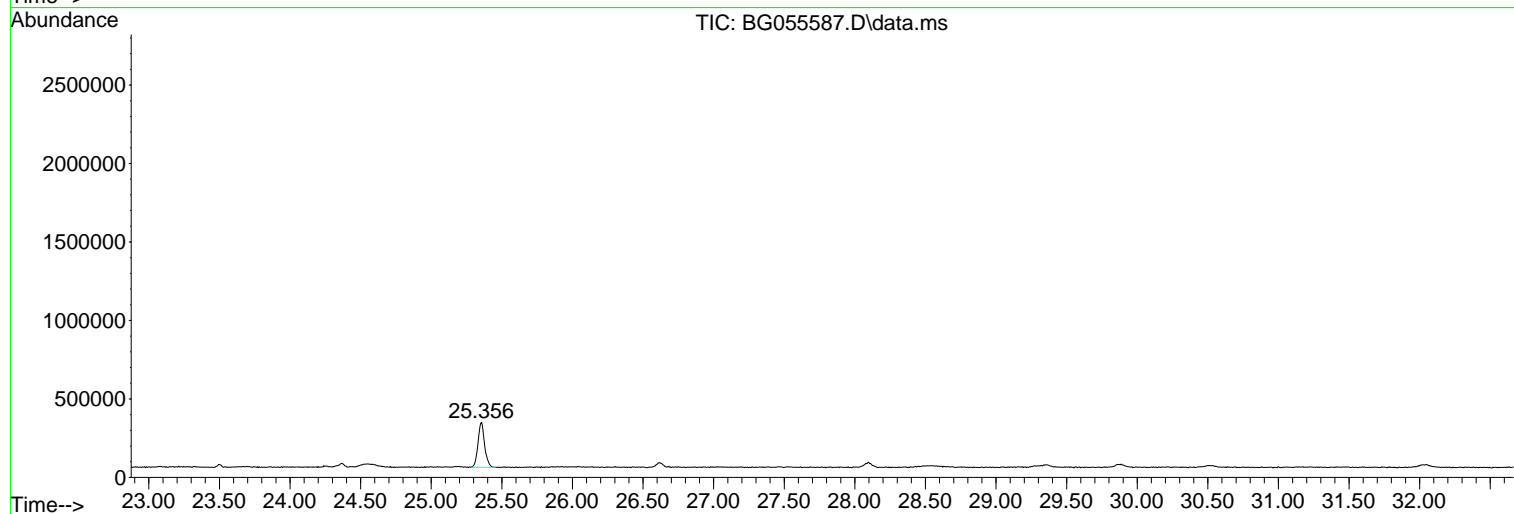
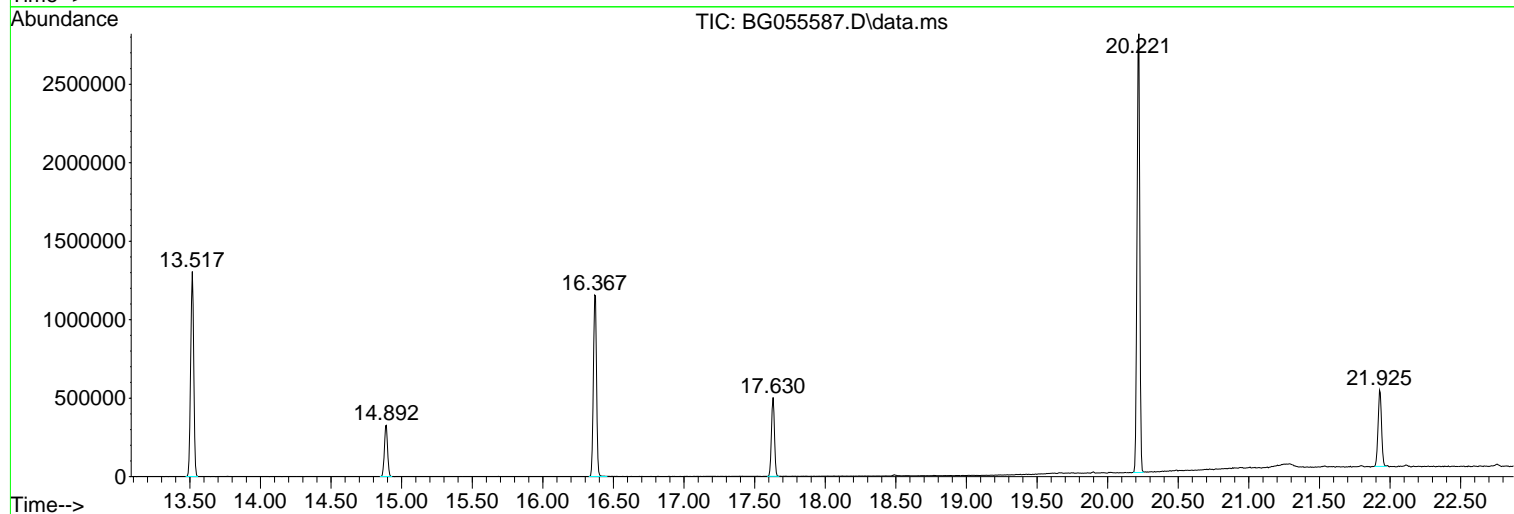
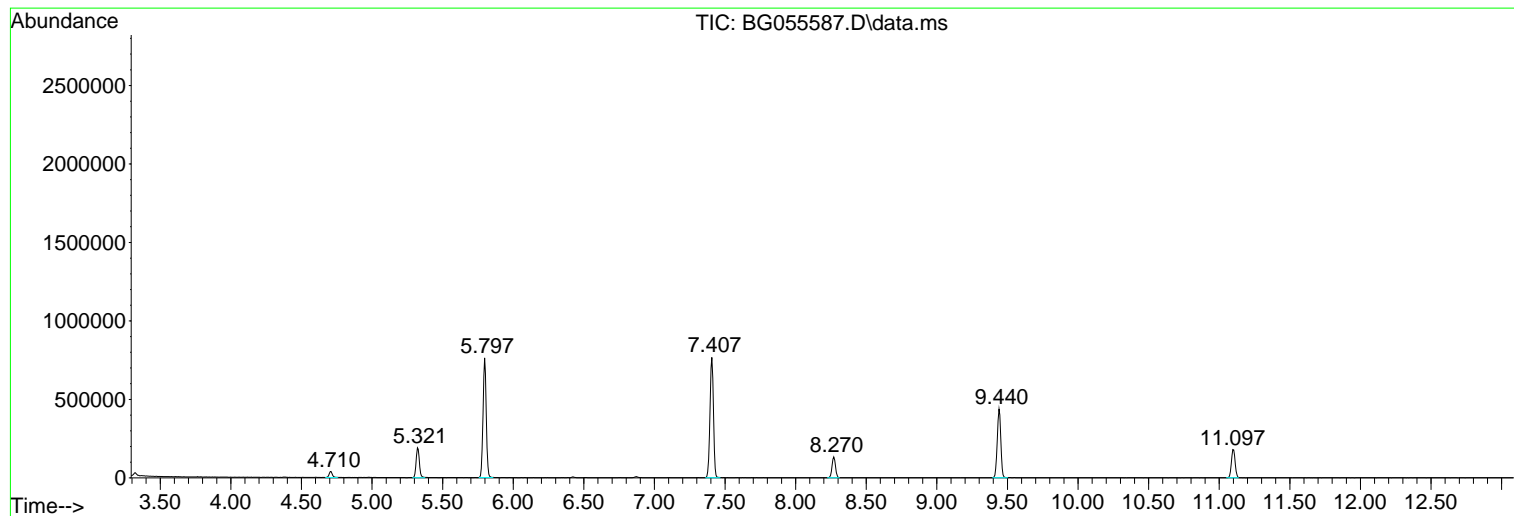
Sum of corrected areas: 14831737

Data Path : Z:\svoasrv\HPCHEM1\BNA\_G\Data\BG111222\  
Data File : BG055587.D  
Acq On : 12 Nov 2022 12:55  
Operator : CG/JU  
Sample : PB148983BL  
Misc :  
ALS Vial : 3 Sample Multiplier: 1

Instrument :  
BNA\_G  
ClientSampleId :  
PB148983BL

Quant Method : Z:\svoasrv\HPCHEM1\BNA\_G\Methods\8270-BG110922.M  
Quant Title : ASP BNA STANDARDS FOR 5 POINT CALIBRATION

TIC Library : C:\Database\NIST20.L  
TIC Integration Parameters: LSCINT.P



Data Path : Z:\svoasrv\HPCHEM1\BNA\_G\Data\BG111222\  
 Data File : BG055587.D  
 Acq On : 12 Nov 2022 12:55  
 Operator : CG/JU  
 Sample : PB148983BL  
 Misc :  
 ALS Vial : 3 Sample Multiplier: 1

Instrument :  
 BNA\_G  
 ClientSampleId :  
 PB148983BL

Quant Method : Z:\svoasrv\HPCHEM1\BNA\_G\Methods\8270-BG110922.M  
 Quant Title : ASP BNA STANDARDS FOR 5 POINT CALIBRATION

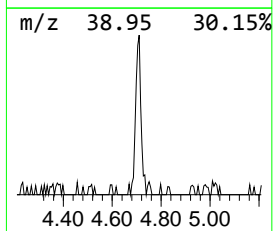
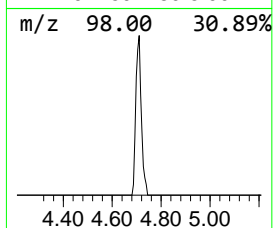
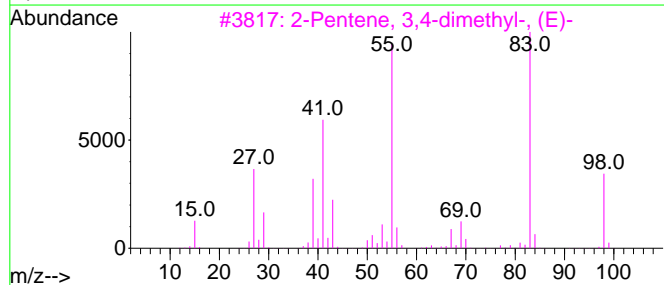
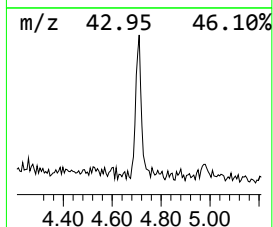
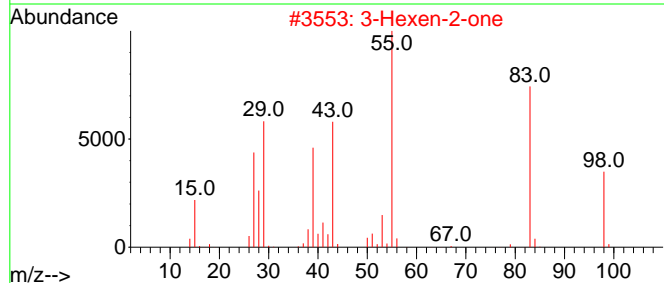
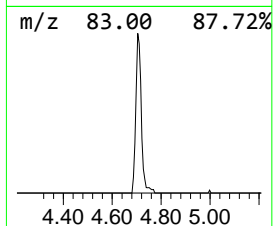
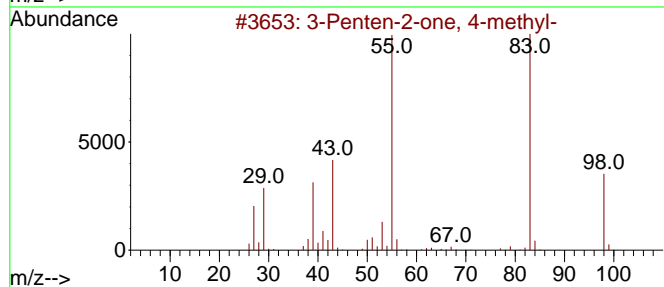
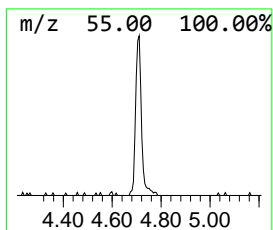
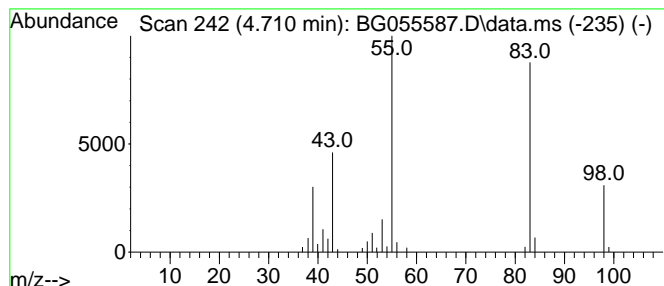
TIC Library : C:\Database\NIST20.L  
 TIC Integration Parameters: LSCINT.P

\*\*\*\*\*  
 Peak Number 1 3-Penten-2-one, 4-methyl- Concentration Rank 2

R.T.	EstConc	Area	Relative to ISTD	R.T.
4.710	5.47 ng	60709	1,4-Dichlorobenzene-d4	8.270

Hit#	of 5	Tentative ID	MW	MolForm	CAS#	Qual
1		3-Penten-2-one, 4-methyl-	98	C6H10O	000141-79-7	94
2		3-Hexen-2-one	98	C6H10O	000763-93-9	91
3		2-Pentene, 3,4-dimethyl-, (E)-	98	C7H14	004914-92-5	90
4		2-Pentene, 3,4-dimethyl-	98	C7H14	024910-63-2	86
5		2-Pentene, 3,4-dimethyl-, (Z)-	98	C7H14	004914-91-4	86



Data Path : Z:\svoasrv\HPCHEM1\BNA\_G\Data\BG111222\  
 Data File : BG055587.D  
 Acq On : 12 Nov 2022 12:55  
 Operator : CG/JU  
 Sample : PB148983BL  
 Misc :  
 ALS Vial : 3 Sample Multiplier: 1

Instrument :  
 BNA\_G  
 ClientSampleId :  
 PB148983BL

Quant Method : Z:\svoasrv\HPCHEM1\BNA\_G\Methods\8270-BG110922.M  
 Quant Title : ASP BNA STANDARDS FOR 5 POINT CALIBRATION

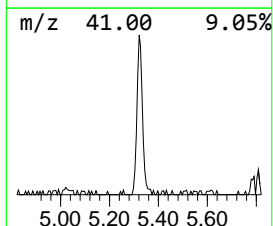
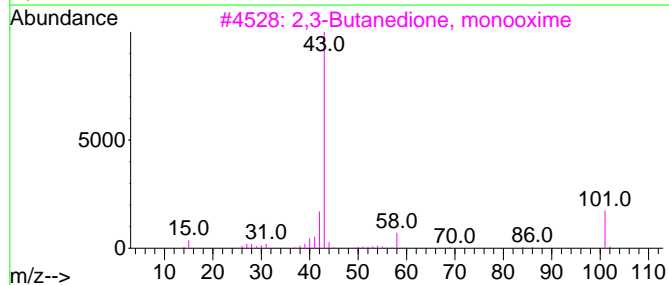
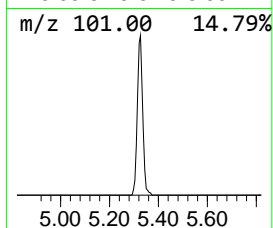
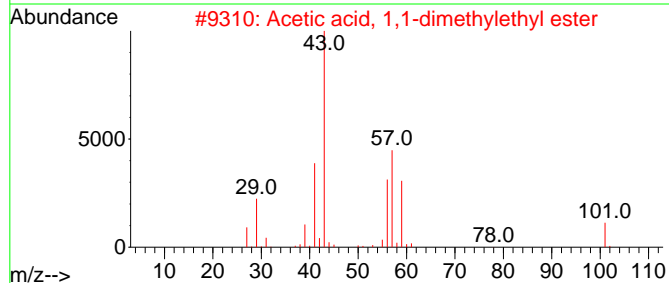
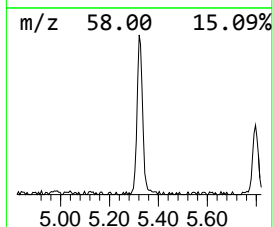
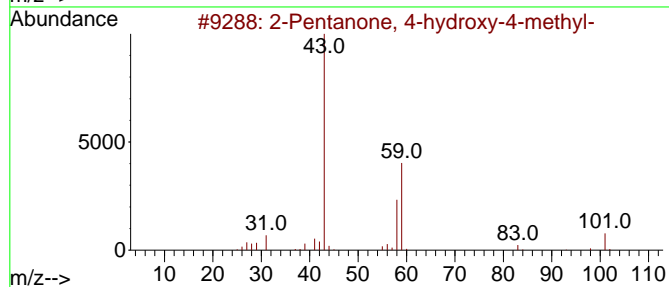
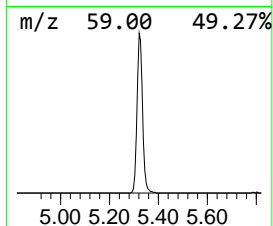
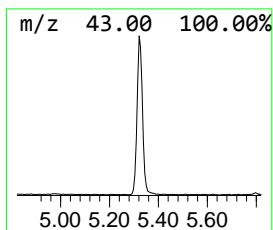
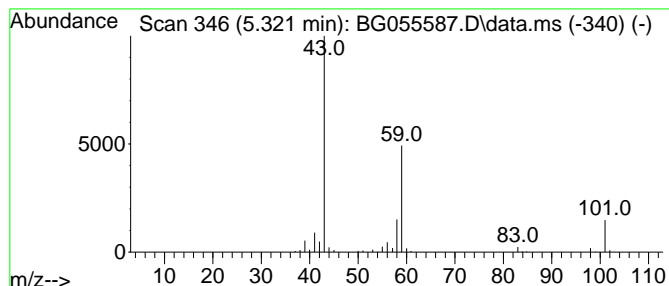
TIC Library : C:\Database\NIST20.L  
 TIC Integration Parameters: LSCINT.P

\*\*\*\*\*  
 Peak Number 2 2-Pentanone, 4-hydroxy-4-me... Concentration Rank 1

R.T.	EstConc	Area	Relative to ISTD	R.T.
5.321	27.24 ng	302366	1,4-Dichlorobenzene-d4	8.270

Hit#	of 5	Tentative ID	MW	MolForm	CAS#	Qual
1		2-Pentanone, 4-hydroxy-4-methyl-	116	C6H12O2	000123-42-2	50
2		Acetic acid, 1,1-dimethylethyl e...	116	C6H12O2	000540-88-5	23
3		2,3-Butanedione, monooxime	101	C4H7NO2	000057-71-6	16
4		1-Propen-2-ol, acetate	100	C5H8O2	000108-22-5	12
5		4-Penten-2-one, 4-methyl-	98	C6H10O	003744-02-3	9



Data Path : Z:\svoasrv\HPCHEM1\BNA\_G\Data\BG111222\  
Data File : BG055587.D  
Acq On : 12 Nov 2022 12:55  
Operator : CG/JU  
Sample : PB148983BL  
Misc :  
ALS Vial : 3 Sample Multiplier: 1

Instrument :  
BNA\_G  
ClientSampleId :  
PB148983BL

Quant Method : Z:\svoasrv\HPCHEM1\BNA\_G\Methods\8270-BG110922.M  
Quant Title : ASP BNA STANDARDS FOR 5 POINT CALIBRATION

TIC Library : C:\Database\NIST20.L  
TIC Integration Parameters: LSCINT.P

TIC Top Hit name	RT	EstConc	Units	Response	--Internal Standard--			
					#	RT	Resp	Conc
3-Penten-2-one,...	4.710	5.5	ng	60709	1	8.270	222019	20.0
2-Pentanone, 4-...	5.321	27.2	ng	302366	1	8.270	222019	20.0