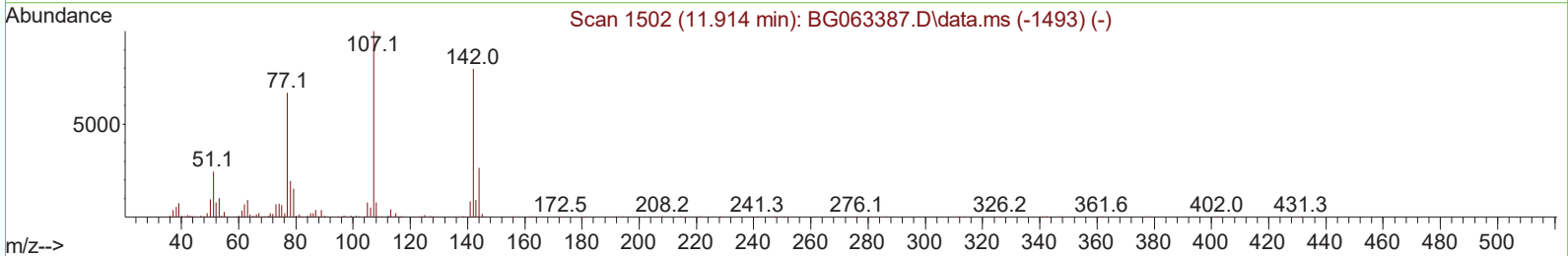
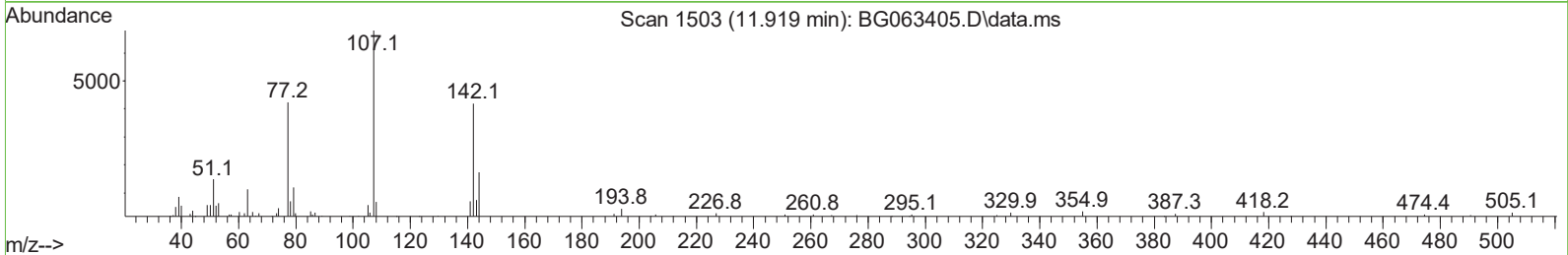
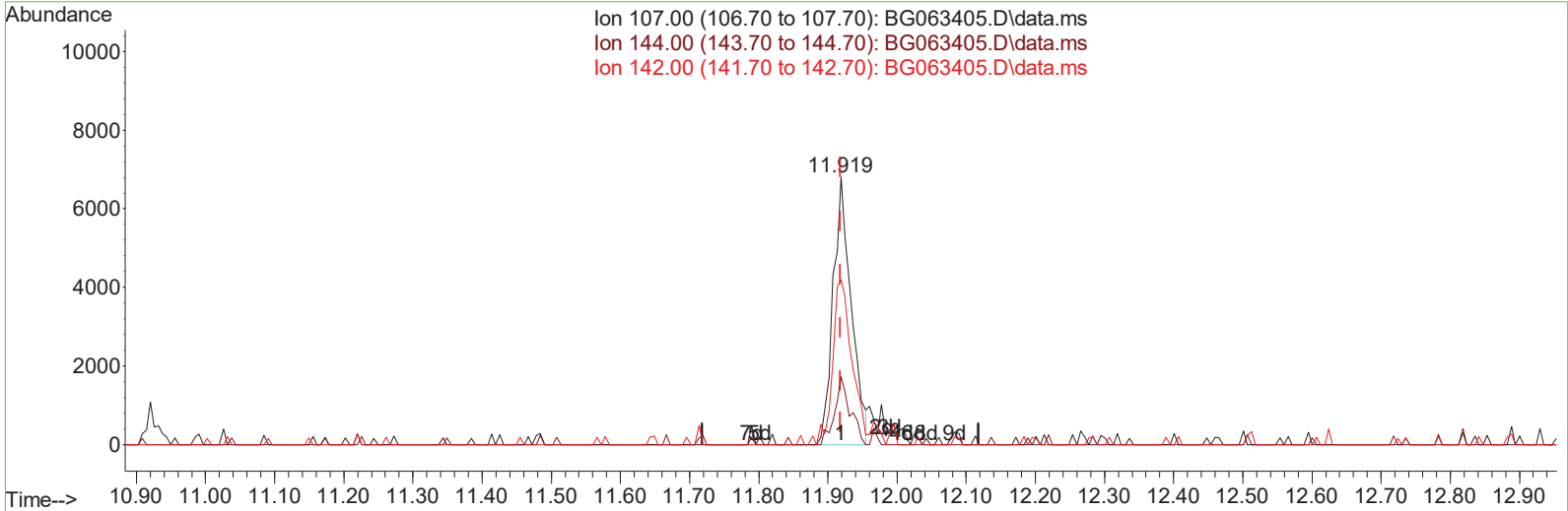


Data Path : Z:\svoasrv\HPCHEM1\BNA_G\Data\BG111324\
 Data File : BG063405.D
 Acq On : 15 Nov 2024 00:22
 Operator : RC/JU
 Sample : P4761-07
 Misc :
 ALS Vial : 21 Sample Multiplier: 1

Quant Time: Nov 15 00:08:48 2024
 Quant Method : Z:\svoasrv\HPCHEM1\BNA_G\Methods\SFAM-EPA-BG110624.MA.M
 Quant Title : SVOA CALIBRATION
 QLast Update : Wed Nov 06 15:45:52 2024
 Response via : Initial Calibration



TIC: BG063405.D\data.ms

(35) 4-Chloro-3-methylphenol (C)

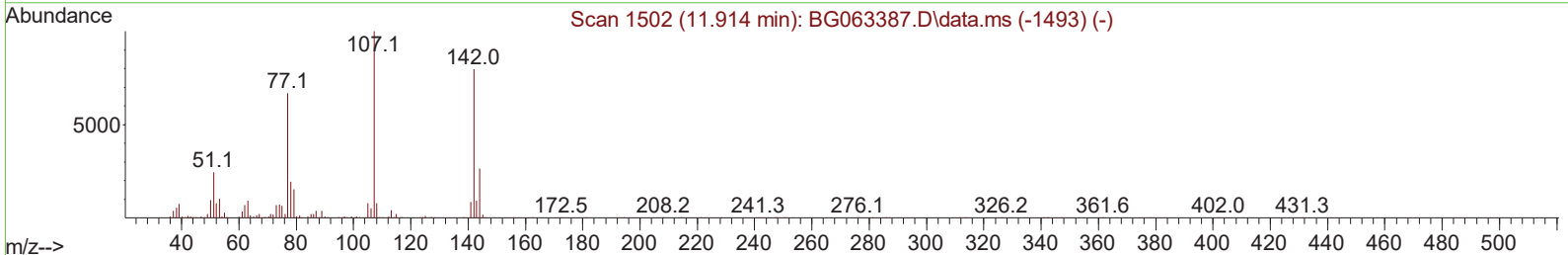
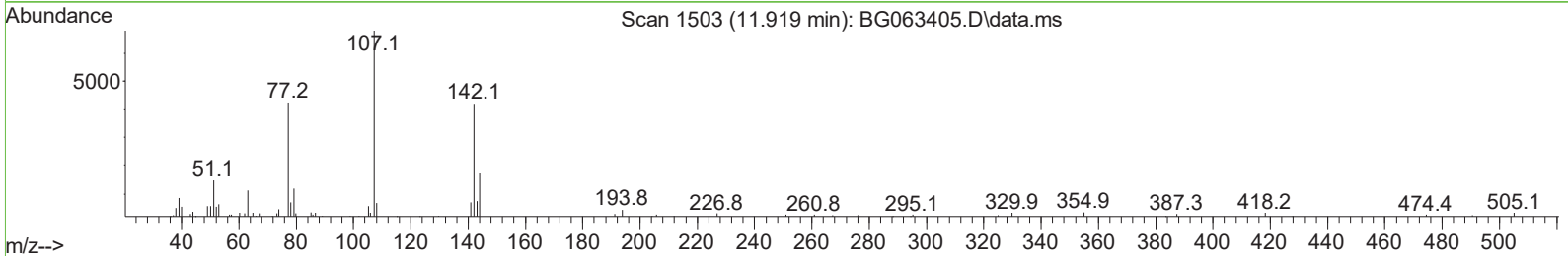
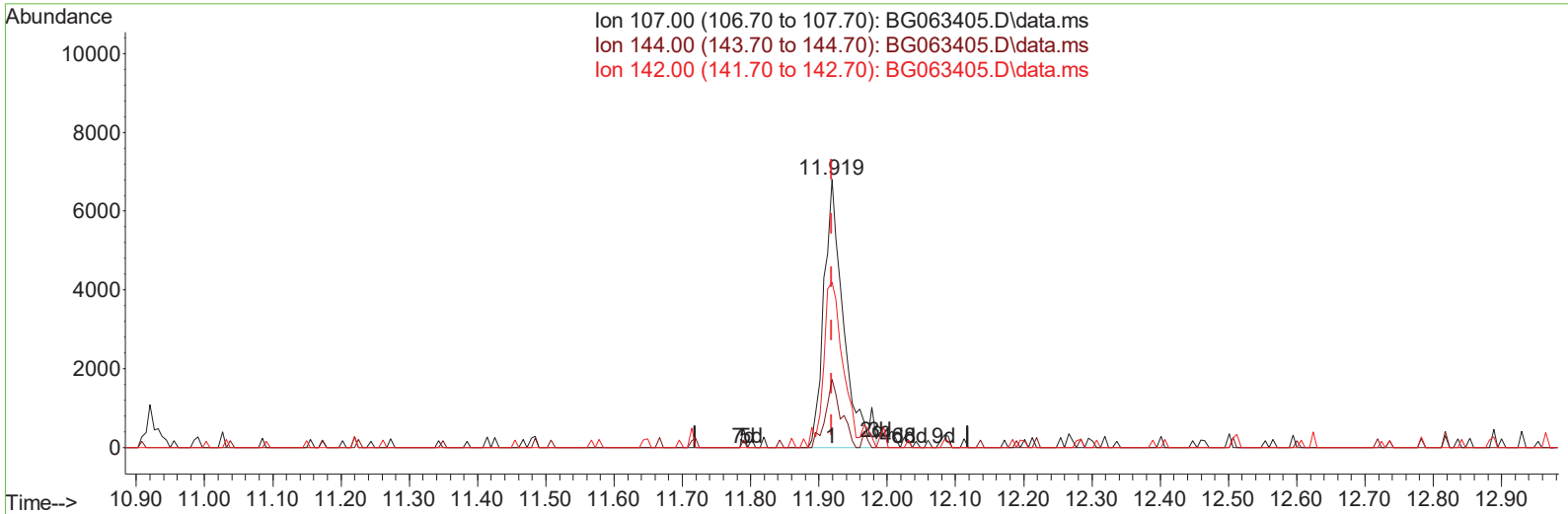
11.919min (+ 0.000) 1.35 ng/ul

response 12479

Ion	Exp%	Act%
107.00	100.00	100.00
144.00	24.40	25.44
142.00	80.30	61.63#
0.00	0.00	0.00

Data Path : Z:\svoasrv\HPCHEM1\BNA_G\Data\BG111324\
 Data File : BG063405.D
 Acq On : 15 Nov 2024 00:22
 Operator : RC/JU
 Sample : P4761-07
 Misc :
 ALS Vial : 21 Sample Multiplier: 1

Quant Time: Nov 15 00:08:48 2024
 Quant Method : Z:\svoasrv\HPCHEM1\BNA_G\Methods\SFAM-EPA-BG110624.MA.M
 Quant Title : SVOA CALIBRATION
 QLast Update : Wed Nov 06 15:45:52 2024
 Response via : Initial Calibration



TIC: BG063405.D\data.ms

(35) 4-Chloro-3-methylphenol (C)

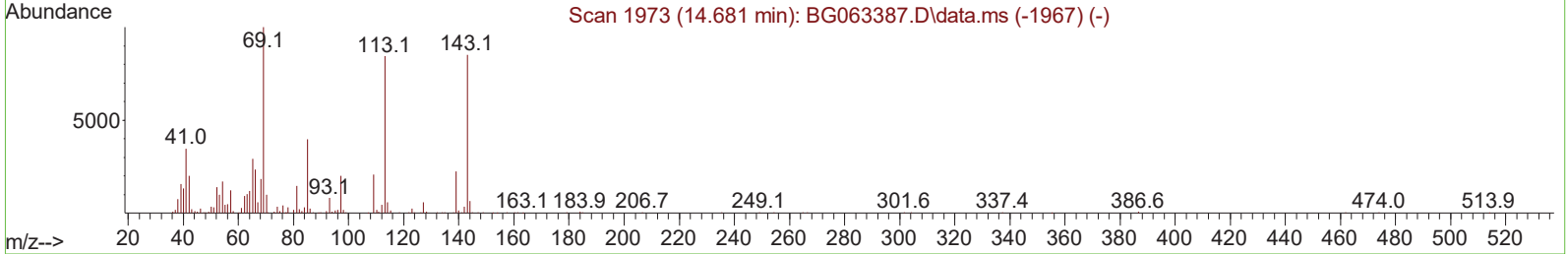
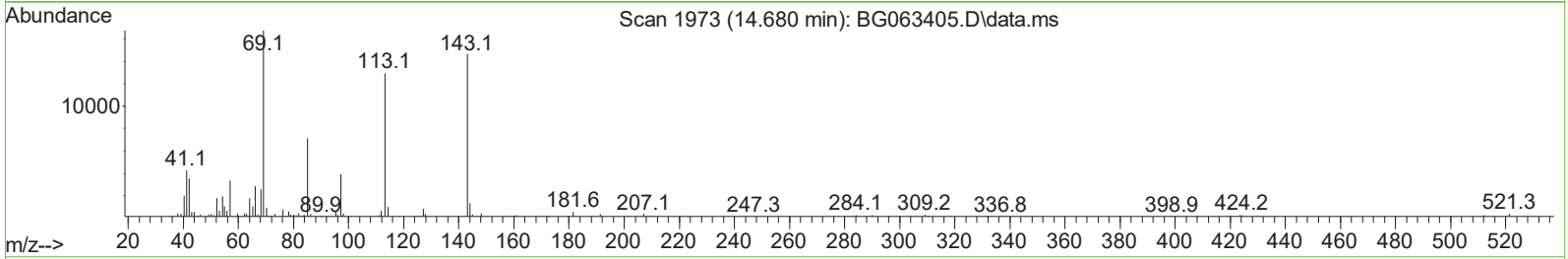
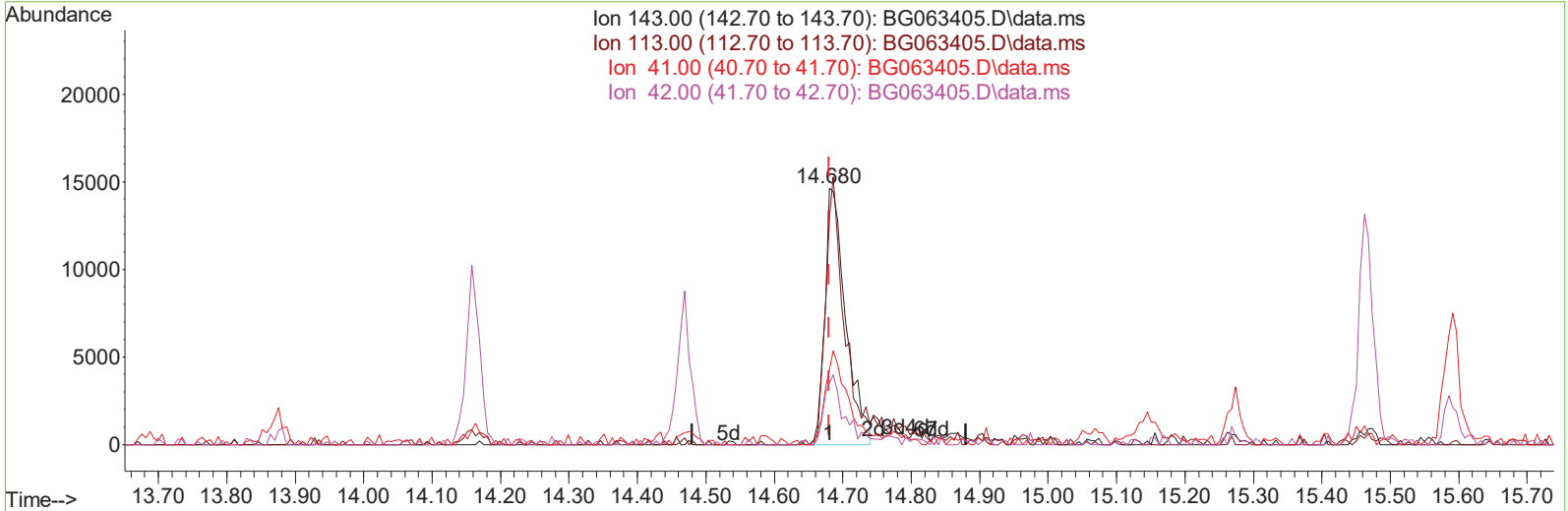
11.919min (+ 0.000) 1.47 ng/ul m

response 13572

Ion	Exp%	Act%
107.00	100.00	100.00
144.00	24.40	25.44
142.00	80.30	61.63#
0.00	0.00	0.00

Data Path : Z:\svoasrv\HPCHEM1\BNA_G\Data\BG111324\
 Data File : BG063405.D
 Acq On : 15 Nov 2024 00:22
 Operator : RC/JU
 Sample : P4761-07
 Misc :
 ALS Vial : 21 Sample Multiplier: 1

Quant Time: Nov 15 00:08:48 2024
 Quant Method : Z:\svoasrv\HPCHEM1\BNA_G\Methods\SFAM-EPA-BG110624.MA.M
 Quant Title : SVOA CALIBRATION
 QLast Update : Wed Nov 06 15:45:52 2024
 Response via : Initial Calibration



TIC: BG063405.D\data.ms

(54) 4-Nitrophenol-d4 (S)

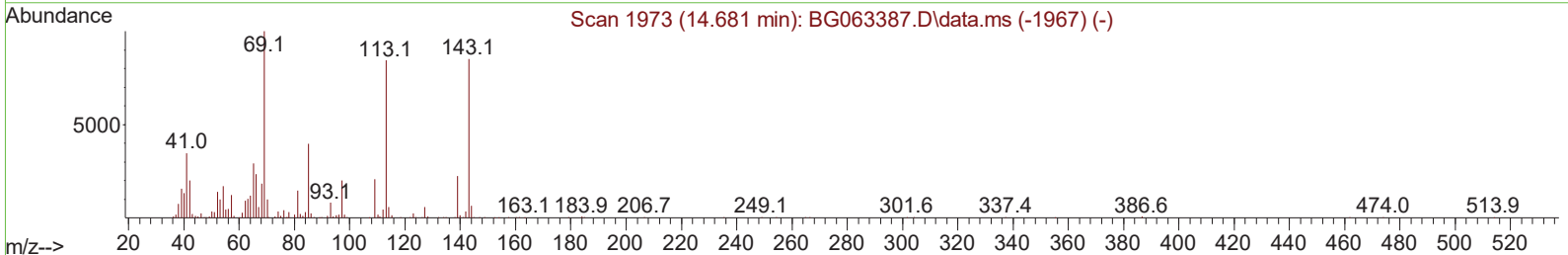
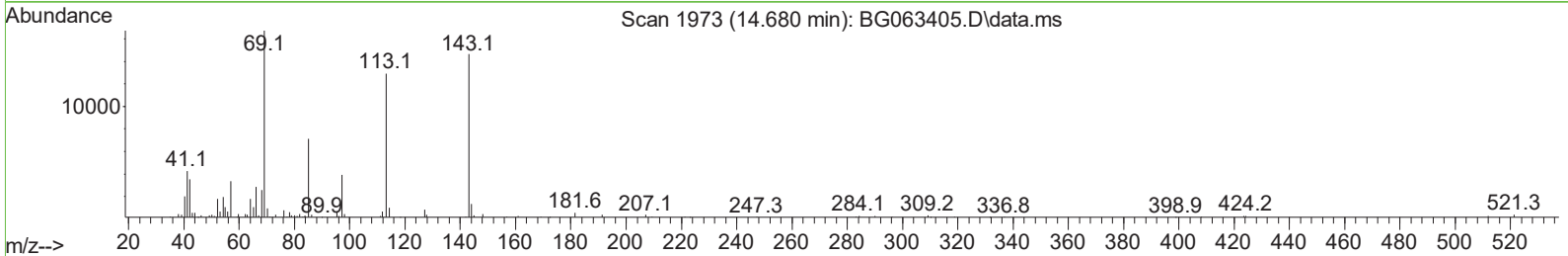
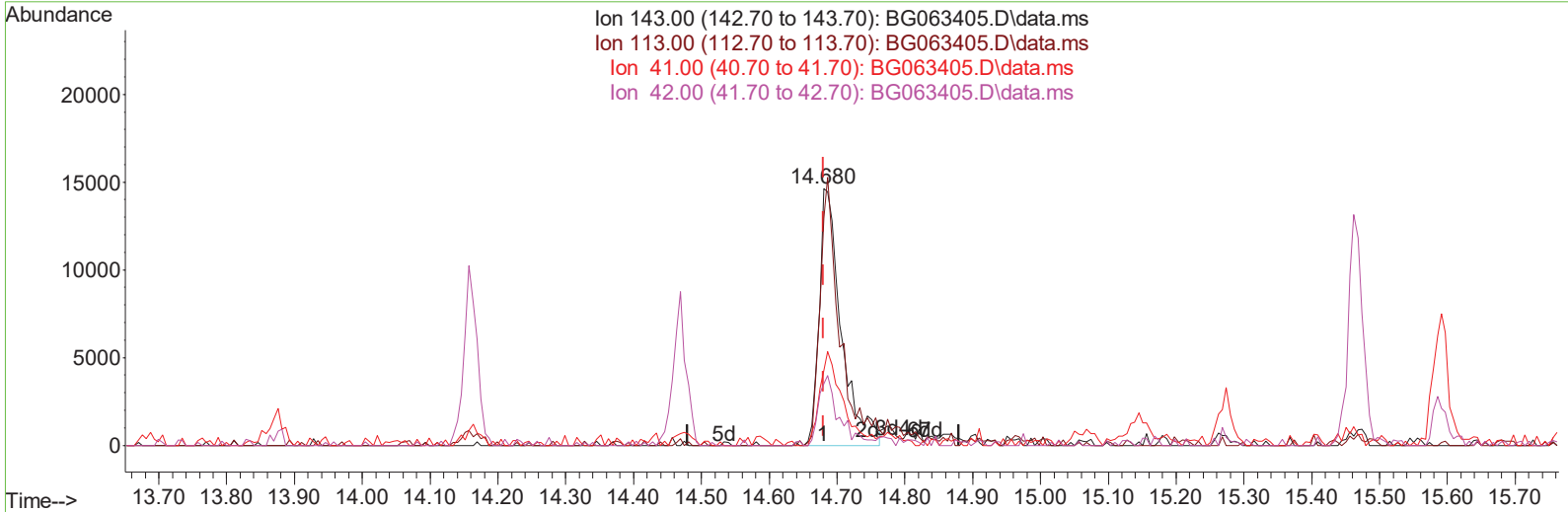
14.680min (+ 0.000) 8.00 ng/ul

response 31348

Ion	Exp%	Act%
143.00	100.00	100.00
113.00	123.00	88.35#
41.00	42.60	29.11#
42.00	30.90	24.07#

Data Path : Z:\svoasrv\HPCHEM1\BNA_G\Data\BG111324\
 Data File : BG063405.D
 Acq On : 15 Nov 2024 00:22
 Operator : RC/JU
 Sample : P4761-07
 Misc :
 ALS Vial : 21 Sample Multiplier: 1

Quant Time: Nov 15 00:08:48 2024
 Quant Method : Z:\svoasrv\HPCHEM1\BNA_G\Methods\SFAM-EPA-BG110624.MA.M
 Quant Title : SVOA CALIBRATION
 QLast Update : Wed Nov 06 15:45:52 2024
 Response via : Initial Calibration



TIC: BG063405.D\data.ms

(54) 4-Nitrophenol-d4 (S)

14.680min (+ 0.000) 8.45 ng/ul m

response 33108

Ion	Exp%	Act%
143.00	100.00	100.00
113.00	123.00	88.35#
41.00	42.60	29.11#
42.00	30.90	24.07#

Data Path : Z:\svoasrv\HPCHEM1\BNA_G\Data\BG111324\
 Data File : BG063405.D
 Acq On : 15 Nov 2024 00:22
 Operator : RC/JU
 Sample : P4761-07
 Misc :
 ALS Vial : 21 Sample Multiplier: 1

Quant Time: Nov 15 00:10:23 2024
 Quant Method : Z:\svoasrv\HPCHEM1\BNA_G\Methods\SFAM-EPA-BG110624.MA.M
 Quant Title : SVOA CALIBRATION
 QLast Update : Wed Nov 06 15:45:52 2024
 Response via : Initial Calibration

Compound	R.T.	QIon	Response	Conc	Units	Dev(Min)

Internal Standards						
1) 1,4-Dichlorobenzene-d4	7.830	152	110825	20.000	ng/ul	-0.01
20) Naphthalene-d8	10.621	136	457007	20.000	ng/ul	# 0.00
38) Acenaphthene-d10	14.469	164	365455	20.000	ng/ul	0.00
64) Phenanthrene-d10	17.219	188	919830	20.000	ng/ul	# 0.00
79) Chrysene-d12	21.473	240	966304	20.000	ng/ul	# 0.00
88) Perylene-d12	24.510	264	1038720	20.000	ng/ul	0.00
System Monitoring Compounds						
3) 1,4-Dioxane-d8	3.300	96	13540	5.524	ng/uL	0.00
4) Pyridine-d5	3.711	84	79179	9.774	ng/ul	0.00
7) Phenol-d5	7.007	99	89686	8.968	ng/ul	0.00
9) Bis-(2-Chloroethyl)eth...	7.166	67	206617	35.224	ng/ul	0.00
11) 2-Chlorophenol-d4	7.365	132	213157	32.839	ng/ul	-0.01
15) 4-Methylphenol-d8	8.541	113	180136	21.252	ng/ul	0.00
21) Nitrobenzene-d5	8.987	128	124580	38.775	ng/ul	0.00
24) 2-Nitrophenol-d4	9.704	143	151361	36.451	ng/ul	-0.01
28) 2,4-Dichlorophenol-d3	10.244	165	275966	33.864	ng/ul	0.00
31) 4-Chloroaniline-d4	10.756	131	280563	26.433	ng/ul	0.00
46) Dimethylphthalate-d6	13.876	166	981608	34.291	ng/ul	0.00
49) Acenaphthylene-d8	14.163	160	1063332	37.951	ng/ul	0.00
54) 4-Nitrophenol-d4	14.680	143	33108m	8.447	ng/ul	0.00
60) Fluorene-d10	15.468	176	887409	36.731	ng/ul	0.00
65) 4,6-Dinitro-2-methylph...	15.591	200	195233	33.772	ng/ul	0.00
73) Anthracene-d10	17.319	188	1591292	40.252	ng/ul	0.00
81) Pyrene-d10	19.622	212	2009370	41.475	ng/ul	0.00
92) Benzo(a)pyrene-d12	24.304	264	2004722	39.974	ng/ul	0.00
Target Compounds						
6) Benzaldehyde	6.972	77	10302	1.864	ng/ul	90
35) 4-Chloro-3-methylphenol	11.919	107	13572m	1.472	ng/ul	

(#) = qualifier out of range (m) = manual integration (+) = signals summed

Data Path : Z:\svoasrv\HPCHEM1\BNA_G\Data\BG111324\
 Data File : BG063405.D
 Acq On : 15 Nov 2024 00:22
 Operator : RC/JU
 Sample : P4761-07
 Misc :
 ALS Vial : 21 Sample Multiplier: 1

Quant Time: Nov 15 00:10:23 2024
 Quant Method : Z:\svoasrv\HPCHEM1\BNA_G\Methods\SFAM-EPA-BG110624.MA.M
 Quant Title : SVOA CALIBRATION
 QLast Update : Wed Nov 06 15:45:52 2024
 Response via : Initial Calibration

