

Data Path : Z:\svoasrv\HPCHEM1\BNA_G\Data\BG111324\
 Data File : BG063391.D
 Acq On : 14 Nov 2024 14:54
 Operator : RC/JU
 Sample : P4715-05
 Misc :
 ALS Vial : 6 Sample Multiplier: 1

Instrument :
 BNA_G
 ClientSampleId :
 COAKO

Integration Parameters: LSCINT.P

Integrator: RTE
 Smoothing : OFF Filtering: 5
 Sampling : 1 Min Area: 0.1 % of largest Peak
 Start Thrs: 0.2 Max Peaks: 100
 Stop Thrs : 0 Peak Location: TOP

If leading or trailing edge < 100 prefer < Baseline drop else tangent >
 Peak separation: 5

Method : Z:\svoasrv\HPCHEM1\BNA_G\Methods\SFAM-EPA-BG110624.MA.M
 Title : SVOA CALIBRATION

Signal : TIC: BG063391.D\data.ms

peak #	R.T. min	first scan	max scan	last scan	PK TY	peak height	corr. area	corr. % max.	% of total
1	3.302	32	36	40	rVB2	27317	42902	0.92%	0.111%
2	3.543	75	77	80	rBV3	7541	9734	0.21%	0.025%
3	3.708	101	105	113	rBV	131542	221902	4.77%	0.577%
4	4.548	246	248	252	rVB3	7098	6510	0.14%	0.017%
5	6.534	582	586	589	rVB3	4779	6403	0.14%	0.017%
6	7.004	660	666	678	rBV	172124	301013	6.47%	0.782%
7	7.163	686	693	704	rVB	410395	672967	14.47%	1.748%
8	7.368	720	728	739	rVB	467145	825660	17.75%	2.145%
9	7.738	788	791	794	rBV3	4673	7441	0.16%	0.019%
10	7.832	799	807	813	rVV	401150	660476	14.20%	1.716%
11	8.232	874	875	879	rBV4	5573	7191	0.15%	0.019%
12	8.537	921	927	938	rBV	473255	818100	17.59%	2.125%
13	8.984	996	1003	1011	rBV	525553	903969	19.43%	2.349%
14	9.195	1035	1039	1040	rBV3	7676	9509	0.20%	0.025%
15	9.495	1087	1090	1093	rVB4	4515	6587	0.14%	0.017%
16	9.707	1119	1126	1136	rBV	469234	822461	17.68%	2.137%
17	10.065	1183	1187	1188	rBV2	4894	6403	0.14%	0.017%
18	10.247	1210	1218	1232	rBV	646293	1204028	25.88%	3.128%
19	10.617	1272	1281	1292	rVB	510262	940730	20.22%	2.444%
20	10.758	1297	1305	1317	rBV	519283	995029	21.39%	2.585%
21	12.215	1547	1553	1559	rVB4	12291	23773	0.51%	0.062%
22	13.426	1756	1759	1764	rBV4	5591	8463	0.18%	0.022%
23	13.620	1787	1792	1793	rBV3	7299	6622	0.14%	0.017%
24	13.872	1829	1835	1842	rBV	1379373	2005255	43.11%	5.210%
25	14.160	1876	1884	1892	rBV	1451917	2210279	47.51%	5.742%
26	14.213	1892	1893	1896	rVB3	7385	6280	0.13%	0.016%
27	14.466	1929	1936	1944	rVB	938349	1479218	31.80%	3.843%
28	14.683	1968	1973	1982	rBV3	109590	227981	4.90%	0.592%
29	15.465	2099	2106	2115	rBV	2050024	3028208	65.09%	7.867%
30	15.588	2120	2127	2136	rBV	693114	1046936	22.51%	2.720%
31	15.705	2143	2147	2151	rVB6	16210	28534	0.61%	0.074%
32	16.246	2237	2239	2243	rBV4	7329	7857	0.17%	0.020%
33	17.221	2397	2405	2412	rBV	1416325	2051639	44.10%	5.330%
34	17.321	2415	2422	2433	rVB	2500731	3718603	79.94%	9.661%
35	17.509	2450	2454	2459	rBV5	4982	7775	0.17%	0.020%
36	18.185	2567	2569	2575	rVB3	12443	13854	0.30%	0.036%

Data Path : Z:\svoasrv\HPCHEM1\BNA_G\Data\BG111324\
 Data File : BG063391.D
 Acq On : 14 Nov 2024 14:54
 Operator : RC/JU
 Sample : P4715-05
 Misc :
 ALS Vial : 6 Sample Multiplier: 1

Instrument :
 BNA_G
 ClientSampleId :
 COAKO

Integration Parameters: LSCINT.P

Integrator: RTE
 Smoothing : OFF Filtering: 5
 Sampling : 1 Min Area: 0.1 % of largest Peak
 Start Thrs: 0.2 Max Peaks: 100
 Stop Thrs : 0 Peak Location: TOP

If leading or trailing edge < 100 prefer < Baseline drop else tangent >
 Peak separation: 5

Method : Z:\svoasrv\HPCHEM1\BNA_G\Methods\SFAM-EPA-BG110624.MA.M
 Title : SVOA CALIBRATION

37	18.232	2575	2577	2580	rBV4	7865	6980	0.15%	0.018%
38	18.267	2580	2583	2586	rBV3	4768	7211	0.16%	0.019%
39	18.367	2599	2600	2605	rVB3	5951	7825	0.17%	0.020%
40	19.184	2734	2739	2745	rVB2	41757	62163	1.34%	0.162%
41	19.254	2746	2751	2756	rBV2	32551	52053	1.12%	0.135%
42	19.554	2799	2802	2806	rBV5	8823	11774	0.25%	0.031%
43	19.619	2806	2813	2819	rBV	3279192	4651990	100.00%	12.086%
44	20.083	2890	2892	2893	rBV2	11041	7512	0.16%	0.020%
45	20.329	2932	2934	2937	rBV4	8098	6365	0.14%	0.017%
46	20.435	2951	2952	2955	rBV3	6887	6948	0.15%	0.018%
47	20.923	3033	3035	3038	rBV4	10469	15243	0.33%	0.040%
48	21.364	3108	3110	3113	rBV3	13465	12910	0.28%	0.034%
49	21.475	3123	3129	3137	rBV2	1520801	2408745	51.78%	6.258%
50	24.301	3600	3610	3621	rVB	1754748	4437949	95.40%	11.530%
51	24.507	3636	3645	3656	rVB	925268	2454953	52.77%	6.378%

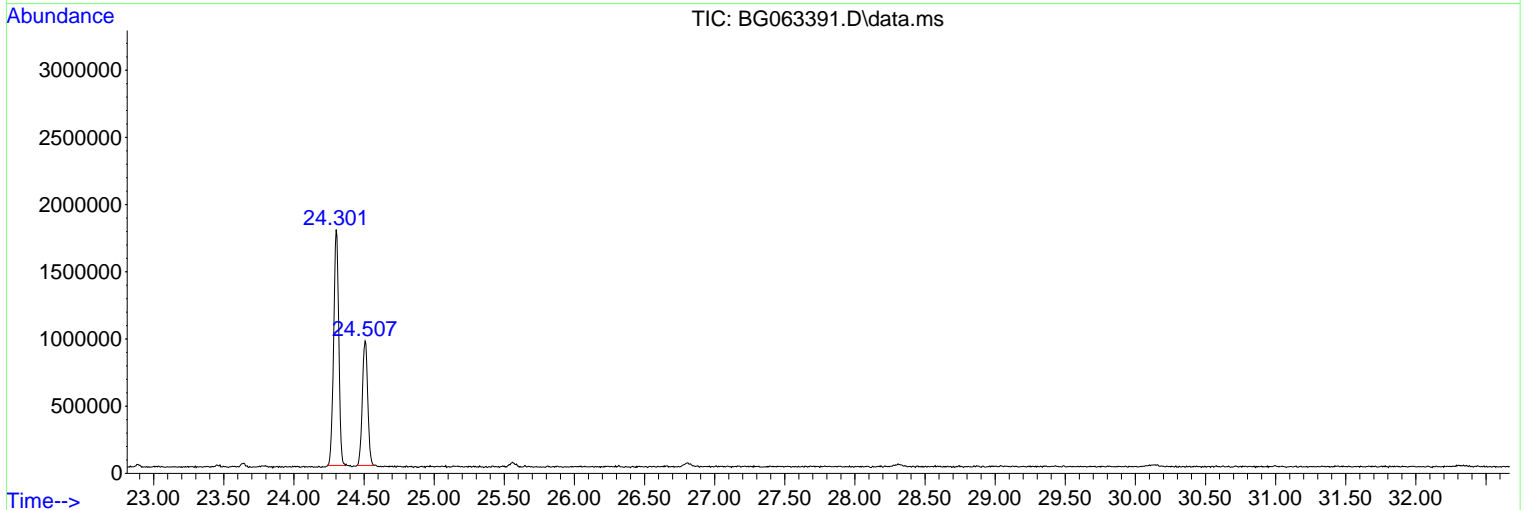
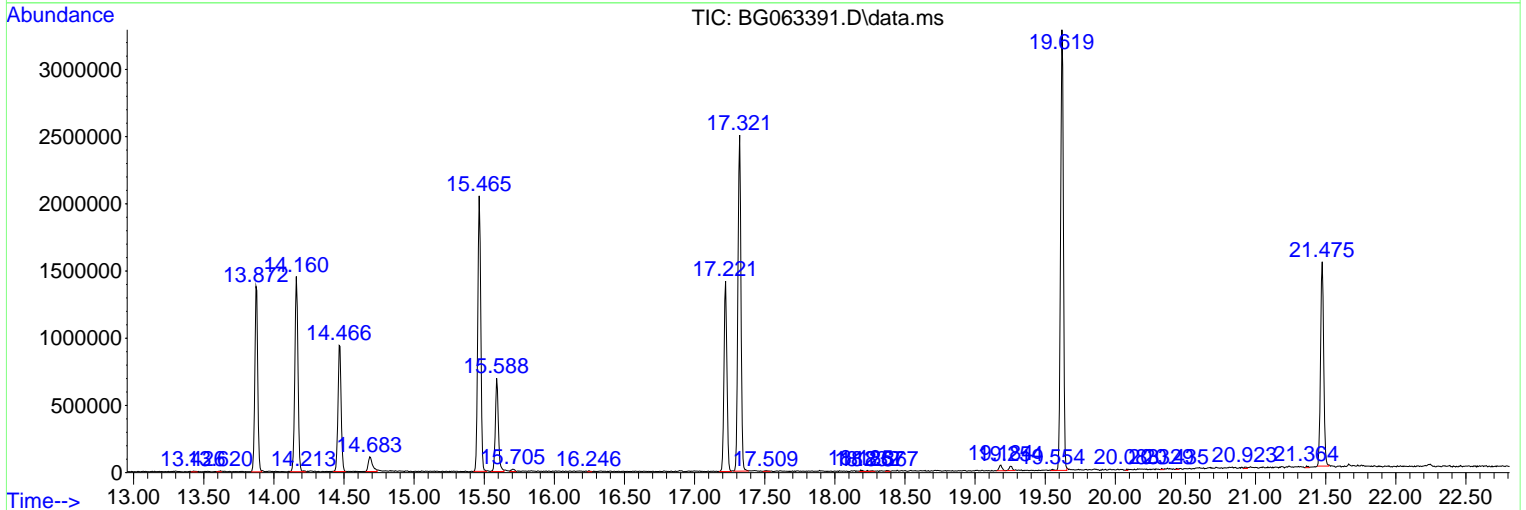
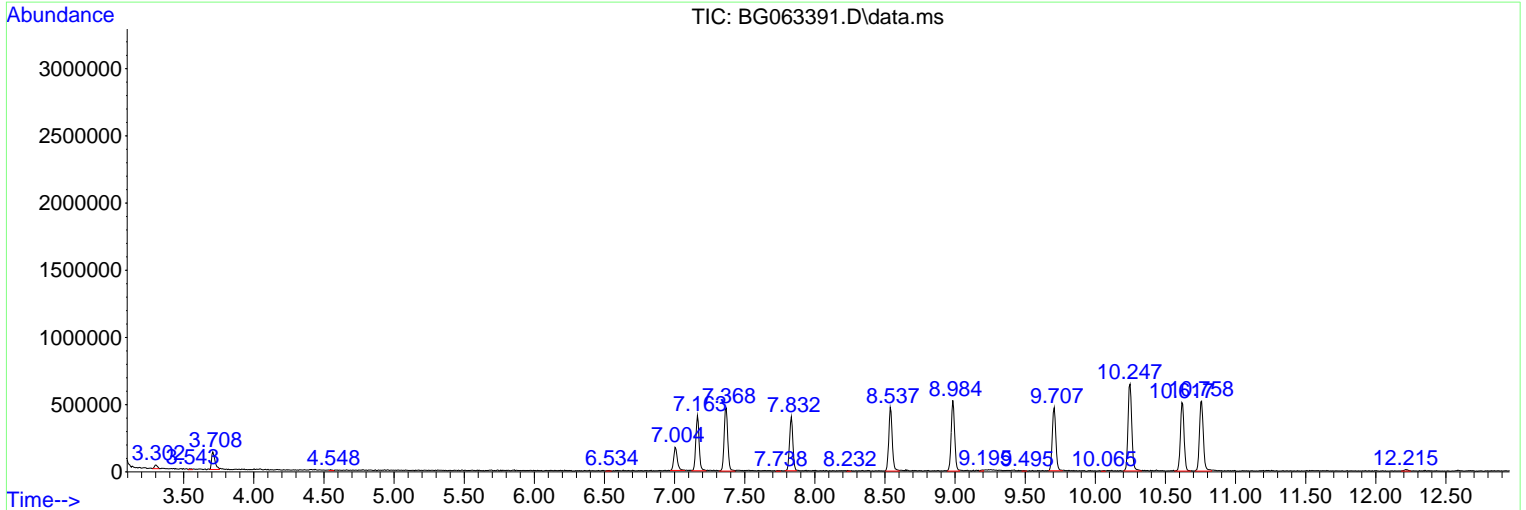
Sum of corrected areas: 38490913

Data Path : Z:\svoasrv\HPCHEM1\BNA_G\Data\BG111324\
 Data File : BG063391.D
 Acq On : 14 Nov 2024 14:54
 Operator : RC/JU
 Sample : P4715-05
 Misc :
 ALS Vial : 6 Sample Multiplier: 1

Instrument :
 BNA_G
ClientSampleId :
 COAK0

Quant Method : Z:\svoasrv\HPCHEM1\BNA_G\Methods\SFAM-EPA-BG110624.MA.M
 Quant Title : SVOA CALIBRATION

TIC Library : C:\DATABASE\NIST20.L
 TIC Integration Parameters: LSCINT.P



Library Search Compound Report

Data Path : Z:\svoasrv\HPCHEM1\BNA_G\Data\BG111324\
Data File : BG063391.D
Acq On : 14 Nov 2024 14:54
Operator : RC/JU
Sample : P4715-05
Misc :
ALS Vial : 6 Sample Multiplier: 1

Instrument :
BNA_G
ClientSampleId :
C0AK0

Quant Method : Z:\svoasrv\HPCHEM1\BNA_G\Methods\SFAM-EPA-BG110624.MA.M
Quant Title : SVOA CALIBRATION

TIC Library : C:\DATABASE\NIST20.L
TIC Integration Parameters: LSCINT.P

No Library Search Compounds Detected

Data Path : Z:\svoasrv\HPCHEM1\BNA_G\Data\BG111324\
Data File : BG063391.D
Acq On : 14 Nov 2024 14:54
Operator : RC/JU
Sample : P4715-05
Misc :
ALS Vial : 6 Sample Multiplier: 1

Instrument :
BNA_G
ClientSampleId :
C0AK0

Quant Method : Z:\svoasrv\HPCHEM1\BNA_G\Methods\SFAM-EPA-BG110624.MA.M
Quant Title : SVOA CALIBRATION

TIC Library : C:\DATABASE\NIST0.L
TIC Integration Parameters: LSCINT.P

TIC Top Hit name	RT	EstConc	Units	Response	--Internal Standard--			
					#	RT	Resp	Conc
