

Data Path : Z:\SVOASRV\HPCHEM1\BNA G\DATA\BG111820\  
 Data File : BG047346.D  
 Acq On : 18 Nov 2020 19:27  
 Operator : CG/JU  
 Sample : SSTDICV020  
 Misc :  
 ALS Vial : 8 Sample Multiplier: 1

Instrument :  
 BNA\_G  
 ClientSampleId :  
 SICV008

Quant Time: Nov 19 04:13:58 2020  
 Quant Method : Z:\SVOASRV\HPCHEM1\BNA\_G\METHODS\SFAM-EPA-BG111820.M  
 Quant Title : SVOA CALIBRATION  
 QLast Update : Thu Nov 19 04:10:57 2020  
 Response via : Initial Calibration

Internal Standards	R.T.	QIon	Response	Conc	Units	Dev(Min)
1) 1,4-Dichlorobenzene-d4	8.28	152	39438	20.00	ng/ul	0.00
20) Naphthalene-d8	11.10	136	160258	20.00	ng/ul	0.00
38) Acenaphthene-d10	14.89	164	127039	20.00	ng/ul	0.00
64) Phenanthrene-d10	17.62	188	322212	20.00	ng/ul	0.00
79) Chrysene-d12	21.90	240	318821	20.00	ng/ul	0.00
88) Perylene-d12	25.30	264	327401	20.00	ng/ul	0.00

## System Monitoring Compounds

3) 1,4-Dioxane-d8	3.61	96	7144	7.18	ng/uL	0.00
4) Pyridine-d5	4.04	84	59140	19.35	ng/ul	0.00
7) Phenol-d5	7.40	99	77346	20.47	ng/ul	0.00
9) Bis-(2-Chloroethyl)ether-d	7.58	67	50431	22.80	ng/ul	0.00
11) 2-Chlorophenol-d4	7.80	132	54072	20.97	ng/ul	0.00
15) 4-Methylphenol-d8	8.96	113	62283	21.22	ng/ul	0.00
21) Nitrobenzene-d5	9.44	128	26758	20.11	ng/ul	0.00
24) 2-Nitrophenol-d4	10.17	143	30111	21.63	ng/ul	0.00
28) 2,4-Dichlorophenol-d3	10.70	165	65612	20.49	ng/ul	0.00
31) 4-Chloroaniline-d4	11.22	131	78212	19.77	ng/ul	0.00
46) Dimethylphthalate-d6	14.28	166	220553	20.76	ng/ul	0.00
49) Acenaphthylene-d8	14.58	160	251869	20.78	ng/ul	0.00
54) 4-Nitrophenol-d4	15.03	143	34511	22.25	ng/ul	0.00
60) Fluorene-d10	15.87	176	186427	19.42	ng/ul	0.00
65) 4,6-Dinitro-2-methylphenol	15.97	200	35385	20.73	ng/ul	0.00
73) Anthracene-d10	17.72	188	312459	20.03	ng/ul	0.00
81) Pyrene-d10	19.98	212	368661	20.49	ng/ul	0.00
92) Benzo(a)pyrene-d12	25.07	264	373833	20.71	ng/ul	0.00

## Target Compounds

Target Compounds	R.T.	QIon	Response	Conc	Units	Ovalue
2) 1,4-Dioxane	3.65	88	7257	6.302	ng/uL#	81
5) Pyridine	4.06	79	54952	18.507	ng/ul	97
6) Benzaldehyde	7.40	77	57062	30.500	ng/ul	92
8) Phenol	7.42	94	71636	19.506	ng/ul#	92
10) Bis(2-Chloroethyl)ether	7.68	93	54051	19.924	ng/ul	96
12) 2-Chlorophenol	7.83	128	49610	19.126	ng/ul	100
13) 2-Methylphenol	8.70	108	55297	19.514	ng/ul	95
14) 2,2'-oxybis(1-Chloropropan	8.80	45	60328	20.034	ng/ul	97
16) Acetophenone	9.09	105	96390	20.037	ng/ul	97
17) N-Nitroso-di-n-propylamine	9.07	70	62041	21.464	ng/ul#	97
18) 4-Methylphenol	9.02	108	62331	20.391	ng/ul	93
19) Hexachloroethane	9.38	117	23370	19.557	ng/ul	89
22) Nitrobenzene	9.48	77	85828	20.866	ng/ul	92
23) Isophorone	10.01	82	164825	20.187	ng/ul	99
25) 2-Nitrophenol	10.20	139	31815	21.162	ng/ul#	92
26) 2,4-Dimethylphenol	10.24	107	78153	19.780	ng/ul	98
27) Bis(2-Chloroethoxy)methane	10.49	93	80469	20.266	ng/ul	93
29) 2,4-Dichlorophenol	10.73	162	58645	20.136	ng/ul	94
30) Naphthalene	11.15	128	172996	19.260	ng/ul	98
32) 4-Chloroaniline	11.24	127	80624	21.430	ng/ul#	88
33) Hexachlorobutadiene	11.44	225	54055	19.684	ng/ul#	82
34) Caprolactam	11.99	113	20139	18.239	ng/ul#	85

Data Path : Z:\SVOASRV\HPCHEM1\BNA G\DATA\BG111820\  
 Data File : BG047346.D  
 Acq On : 18 Nov 2020 19:27  
 Operator : CG/JU  
 Sample : SSTDICV020  
 Misc :  
 ALS Vial : 8 Sample Multiplier: 1

Instrument :  
 BNA\_G  
 ClientSampleId :  
 SICV008

Quant Time: Nov 19 04:13:58 2020  
 Quant Method : Z:\SVOASRV\HPCHEM1\BNA\_G\METHODS\SFAM-EPA-BG111820.M  
 Quant Title : SVOA CALIBRATION  
 QLast Update : Thu Nov 19 04:10:57 2020  
 Response via : Initial Calibration

Internal Standards	R.T.	QIon	Response	Conc	Units	Dev(Min)
35) 4-Chloro-3-methylphenol	12.34	107	77116	20.974	ng/ul	90
36) 2-Methylnaphthalene	12.73	142	140683	20.672	ng/ul	99
37) 1-Methylnaphthalene	12.95	142	132230	20.106	ng/ul	98
39) 1,2,4,5-Tetrachlorobenzene	13.09	216	96710	19.697	ng/ul	94
40) Hexachlorocyclopentadiene	13.08	237	73971	21.218	ng/ul	94
41) 2,4,6-Trichlorophenol	13.32	196	62461	20.720	ng/ul	89
42) 2,4,5-Trichlorophenol	13.39	196	65052	20.479	ng/ul	100
43) 1,1'-Biphenyl	13.73	154	190329	19.977	ng/ul	98
44) 2-Chloronaphthalene	13.77	162	147264	19.376	ng/ul	95
45) 2-Nitroaniline	13.96	65	56272	21.617	ng/ul	94
47) Dimethylphthalate	14.33	163	210968	19.505	ng/ul	99
48) 2,6-Dinitrotoluene	14.44	165	43115	21.306	ng/ul	94
50) Acenaphthylene	14.61	152	229166	20.131	ng/ul	100
51) 3-Nitroaniline	14.77	138	43357	26.036	ng/ul	96
52) Acenaphthene	14.95	153	162362	19.834	ng/ul	98
53) 2,4-Dinitrophenol	14.97	184	20695	19.983	ng/ul#	39
55) 4-Nitrophenol	15.05	109	45797	20.334	ng/ul	88
56) Dibenzofuran	15.28	168	237328	20.300	ng/ul	97
57) 2,4-Dinitrotoluene	15.22	165	61061	21.536	ng/ul	90
58) 2,3,4,6-Tetrachlorophenol	15.49	232	64668	22.083	ng/ul#	97
59) Diethylphthalate	15.68	149	208795	19.180	ng/ul	95
61) Fluorene	15.92	166	193453	19.331	ng/ul	99
62) 4-Chlorophenyl-phenylether	15.91	204	115720	19.060	ng/ul	95
63) 4-Nitroaniline	15.92	138	46389	27.826	ng/ul	91
66) 4,6-Dinitro-2-methylphenol	15.98	198	36184	20.077	ng/ul#	93
67) N-Nitrosodiphenylamine	16.12	169	181037	19.750	ng/ul	93
68) 4-Bromophenyl-phenylether	16.80	248	77356	19.133	ng/ul	98
69) Hexachlorobenzene	16.92	284	82219	19.068	ng/ul	99
70) Atrazine	17.05	200	69060	16.943	ng/ul	96
71) Pentachlorophenol	17.26	266	50215	21.567	ng/ul	95
72) Phenanthrene	17.66	178	337414	19.655	ng/ul	98
74) Anthracene	17.75	178	332992	19.228	ng/ul	96
75) 1,2,3,4-Tetrachlorobenzene	13.69	216	97364	19.270	ng/uL	96
76) Pentachlorobenzene	15.20	250	94404	18.966	ng/uL	97
77) Carbazole	18.01	167	298325	21.319	ng/ul	98
78) Di-n-butylphthalate	18.56	149	361304	19.817	ng/ul	99
80) Fluoranthene	19.65	202	453584	19.951	ng/ul	98
82) Pyrene	20.01	202	435733	19.375	ng/ul	99
83) Butylbenzylphthalate	20.88	149	155136	19.568	ng/ul	99
84) 3,3'-Dichlorobenzidine	21.78	252	182541	22.695	ng/ul	99
85) Benzo(a)anthracene	21.88	228	441582	19.812	ng/ul	99
86) Bis(2-ethylhexyl)phthalate	21.78	149	215507	19.504	ng/ul	99
87) Chrysene	21.95	228	414968	19.392	ng/ul	98
89) Di-n-octyl phthalate	23.06	149	371849	20.549	ng/ul	100
90) Benzo(b)fluoranthene	24.29	252	441923	19.456	ng/ul	99
91) Benzo(k)fluoranthene	24.29	252	441923	20.250	ng/ul	98
93) Benzo(a)pyrene	25.14	252	392236	19.442	ng/ul	98
94) Indeno(1,2,3-cd)pyrene	29.20	276	475242	19.516	ng/ul	99
95) Dibenzo(a,h)anthracene	29.27	278	391506	19.563	ng/ul	97
96) Benzo(g,h,i)perylene	30.42	276	390033	19.326	ng/ul#	90

Data Path : Z:\SVOASRV\HPCHEM1\BNA G\DATA\BG111820\  
 Data File : BG047346.D  
 Acq On : 18 Nov 2020 19:27  
 Operator : CG/JU  
 Sample : SSTDICV020  
 Misc :  
 ALS Vial : 8 Sample Multiplier: 1

Instrument :  
 BNA\_G  
 ClientSampleId :  
 SICV008

Quant Time: Nov 19 04:13:58 2020  
 Quant Method : Z:\SVOASRV\HPCHEM1\BNA\_G\METHODS\SFAM-EPA-BG111820.M  
 Quant Title : SVOA CALIBRATION  
 QLast Update : Thu Nov 19 04:10:57 2020  
 Response via : Initial Calibration

Internal Standards	R.T.	QIon	Response	Conc	Units	Dev(Min)
--------------------	------	------	----------	------	-------	----------

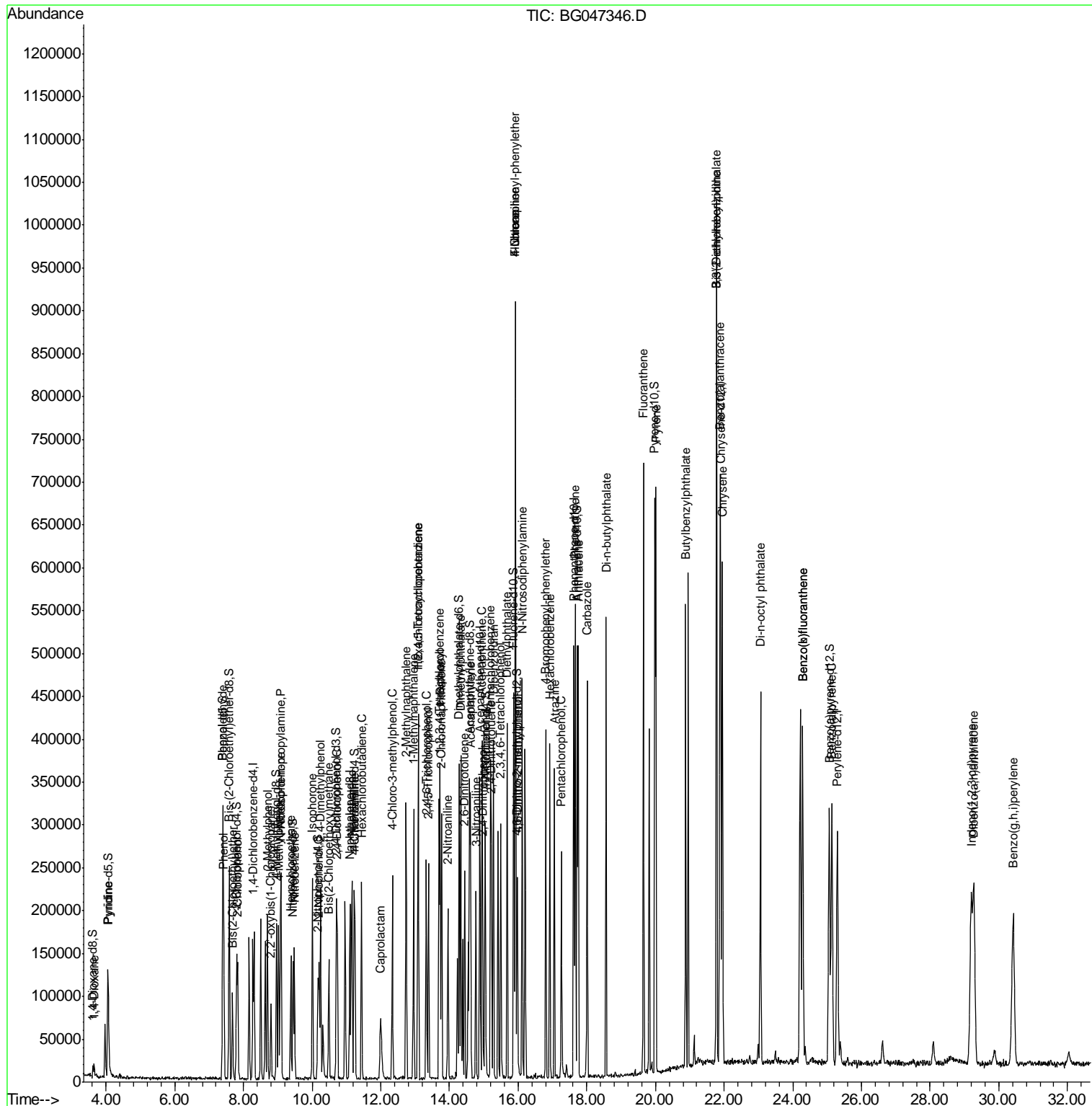
-----  
 -----

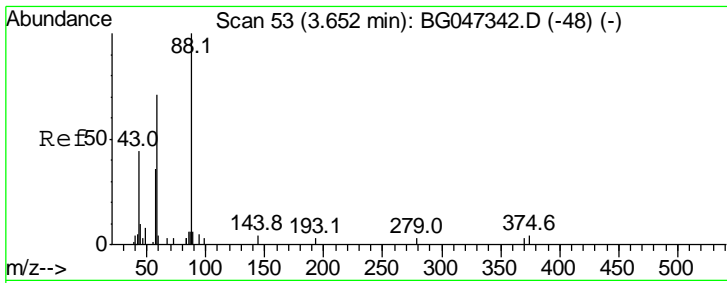
(#) = qualifier out of range (m) = manual integration (+) = signals summed

Data Path : Z:\SVOASRV\HPCHEM1\BNA G\DATA\BG111820\  
 Data File : BG047346.D  
 Acq On : 18 Nov 2020 19:27  
 Operator : CG/JU  
 Sample : SSTDICV020  
 Misc :  
 ALS Vial : 8 Sample Multiplier: 1

Instrument :  
 BNA\_G  
 Client Sampled :  
 SICV008

Quant Time: Nov 19 04:13:58 2020  
 Quant Method : Z:\SVOASRV\HPCHEM1\BNA\_G\METHODS\SFAM-EPA-BG111820.M  
 Quant Title : SVOA CALIBRATION  
 QLast Update : Thu Nov 19 04:10:57 2020  
 Response via : Initial Calibration

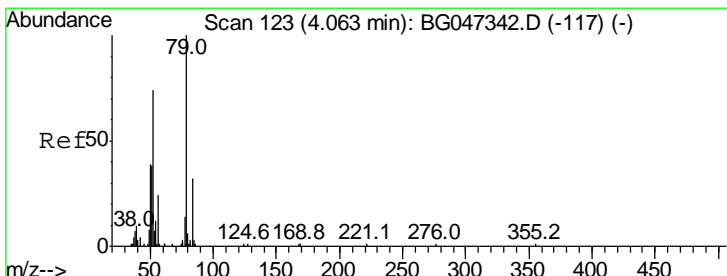
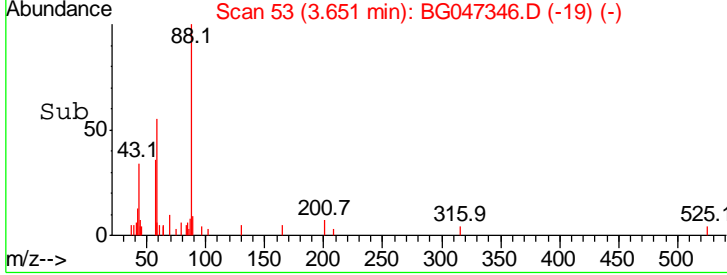
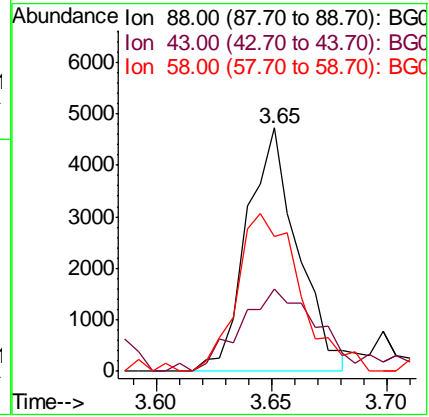
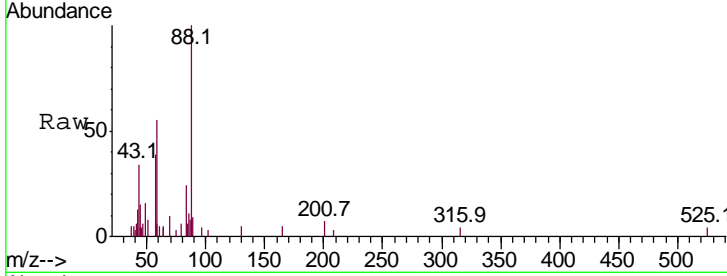




#2  
 1,4-Dioxane  
 Concen: 6.302 ng/uL  
 RT: 3.65 min Scan# 53  
 Delta R.T. 0.00 min  
 Lab File: BG047346.D  
 Acq: 18 Nov 2020 19:27

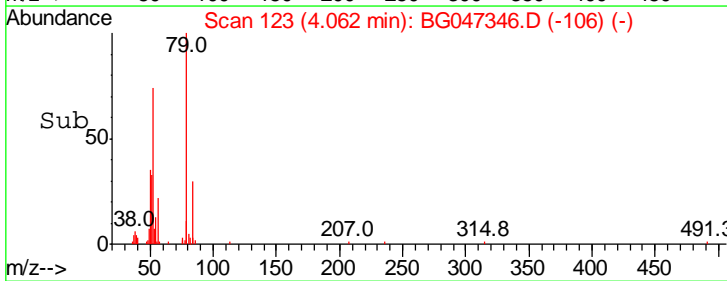
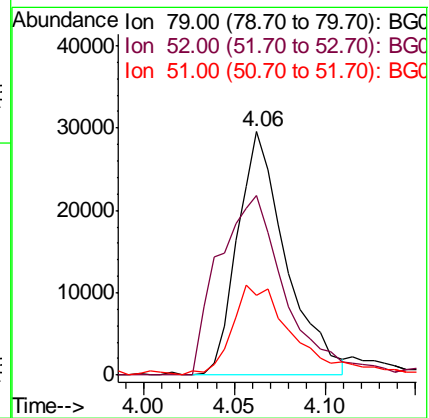
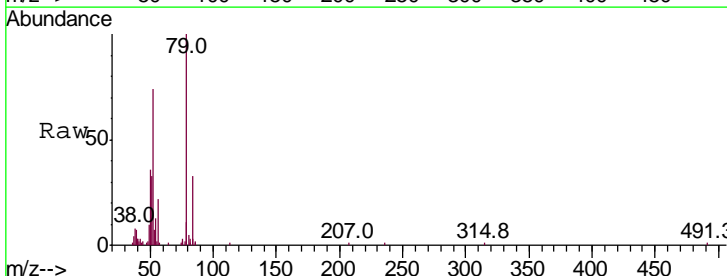
**Instrument :**  
 BNA\_G  
**ClientSampled :**  
 SICV008

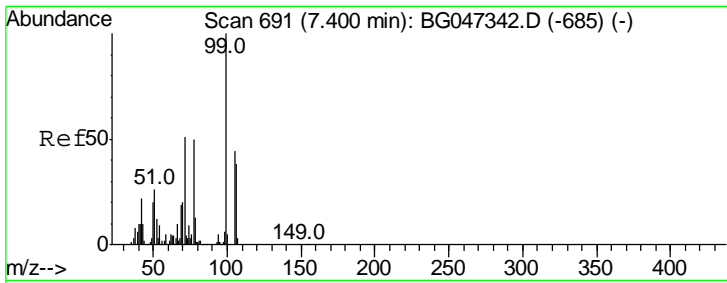
Tgt Ion	Resp	Lower	Upper
88	100		
43	34.0	37.9	56.9#
58	55.4	56.6	85.0#



#5  
 Pyridine  
 Concen: 18.507 ng/ul  
 RT: 4.06 min Scan# 123  
 Delta R.T. -0.00 min  
 Lab File: BG047346.D  
 Acq: 18 Nov 2020 19:27

Tgt Ion	Resp	Lower	Upper
79	100		
52	73.6	59.0	88.6
51	32.9	30.9	46.3

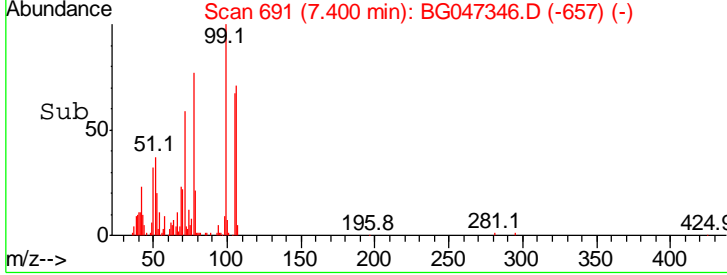
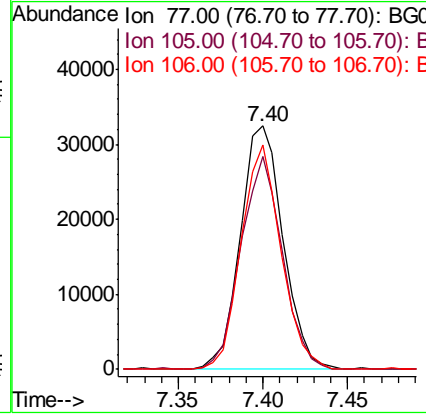
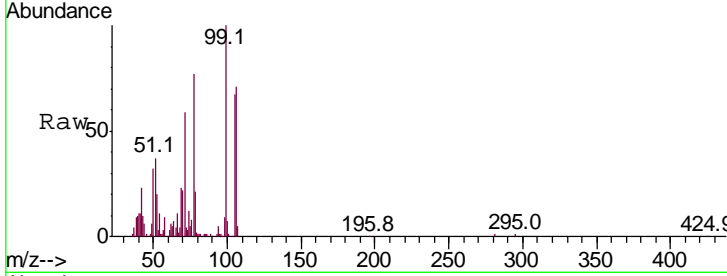




#6  
Benzaldehyde  
Concen: 30.500 ng/ul  
RT: 7.40 min Scan# 691  
Delta R.T. -0.00 min  
Lab File: BG047346.D  
Acq: 18 Nov 2020 19:27

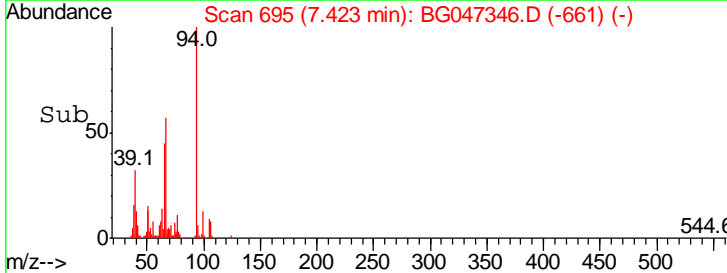
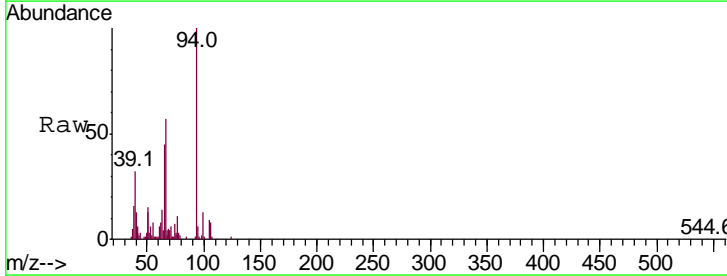
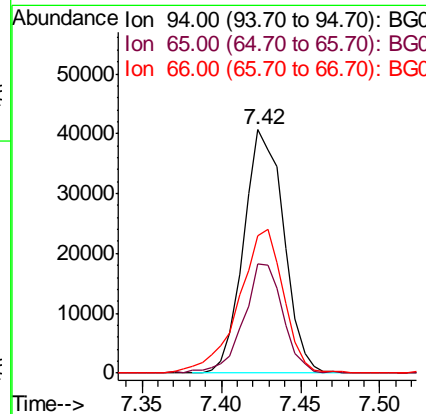
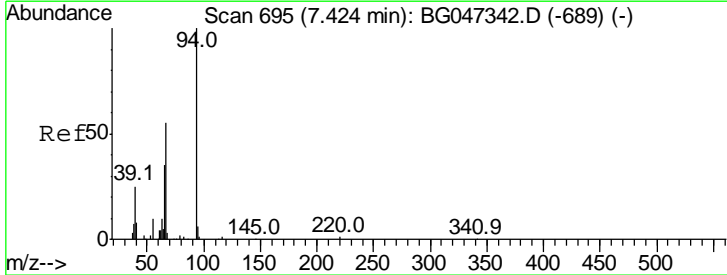
**Instrument :**  
BNA\_G  
**ClientSampled :**  
SICV008

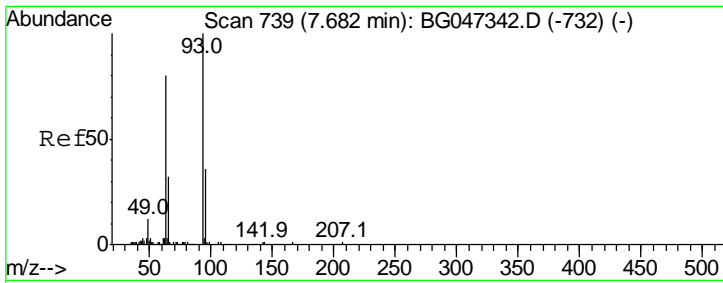
Tgt Ion	Resp	Lower	Upper
77	100		
105	87.4	70.1	105.1
106	92.4	61.8	92.6



#8  
Phenol  
Concen: 19.506 ng/ul  
RT: 7.42 min Scan# 695  
Delta R.T. -0.00 min  
Lab File: BG047346.D  
Acq: 18 Nov 2020 19:27

Tgt Ion	Resp	Lower	Upper
94	100		
65	44.9	28.6	43.0#
66	56.7	47.2	70.8

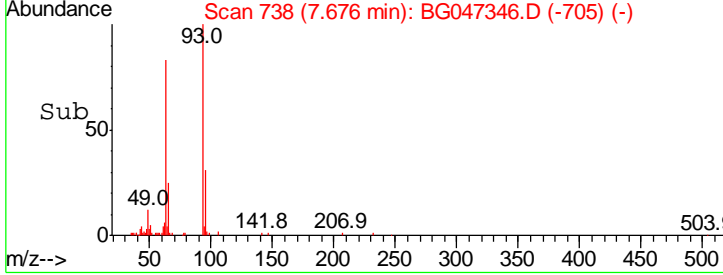
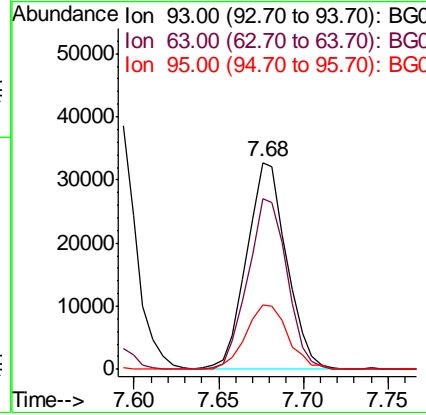
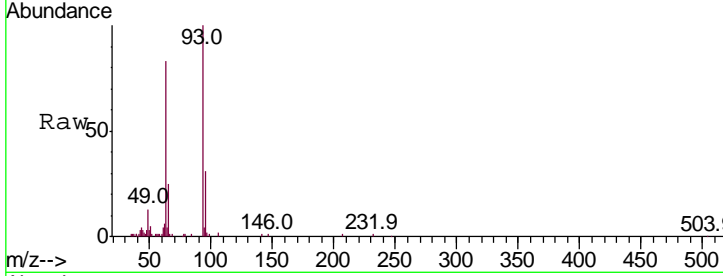




#10  
 Bis(2-Chloroethyl)ether  
 Concen: 19.924 ng/ul  
 RT: 7.68 min Scan# 738  
 Delta R.T. -0.01 min  
 Lab File: BG047346.D  
 Acq: 18 Nov 2020 19:27

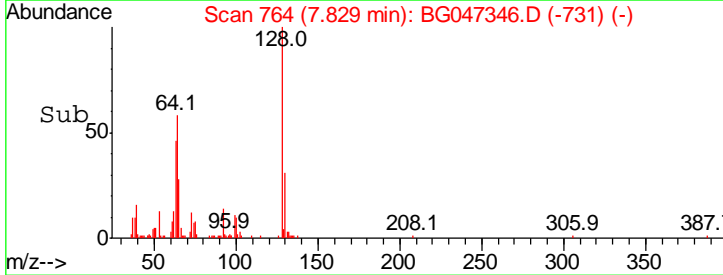
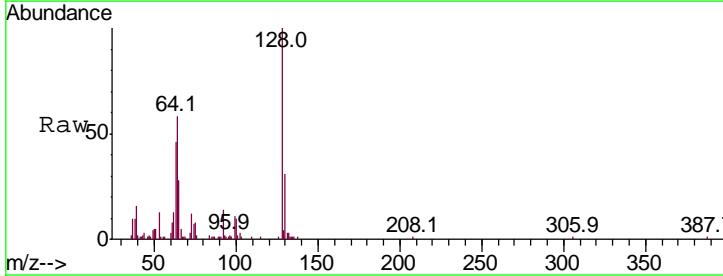
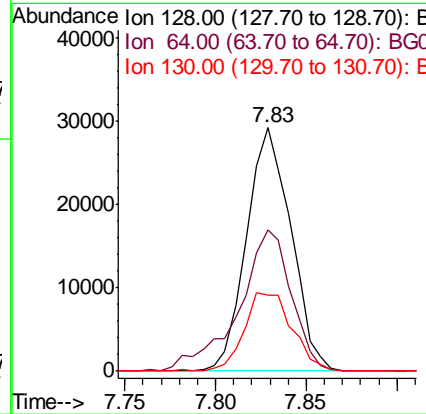
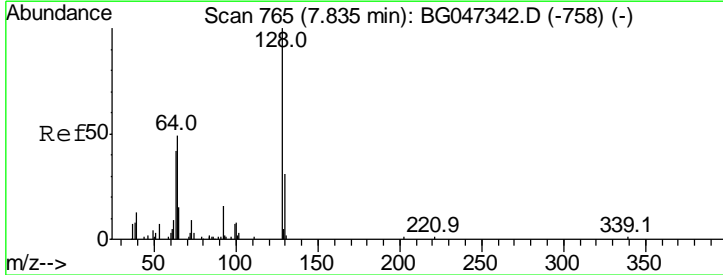
**Instrument :**  
 BNA\_G  
**ClientSampled :**  
 SICV008

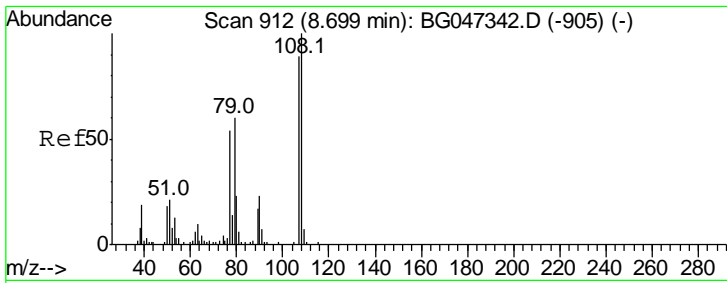
Tgt Ion	Resp	Lower	Upper
93	54051		
93	100		
63	82.6	64.2	96.2
95	31.4	28.8	43.2



#12  
 2-Chlorophenol  
 Concen: 19.126 ng/ul  
 RT: 7.83 min Scan# 764  
 Delta R.T. -0.01 min  
 Lab File: BG047346.D  
 Acq: 18 Nov 2020 19:27

Tgt Ion	Resp	Lower	Upper
128	49610		
128	100		
64	57.8	46.1	69.1
130	31.0	24.5	36.7

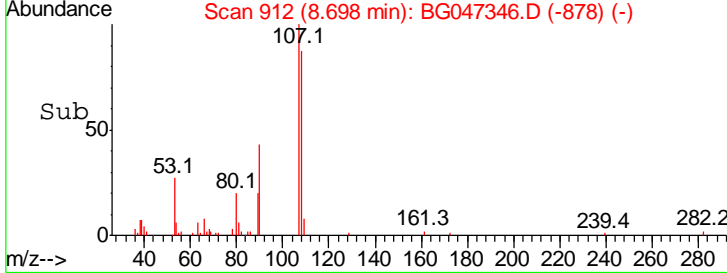
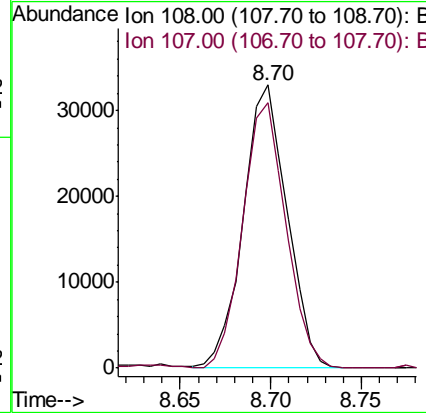
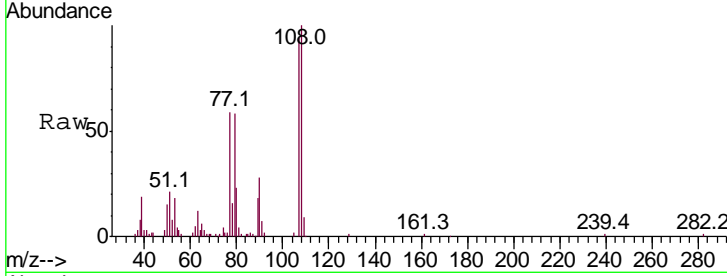




#13  
 2-Methylphenol  
 Concen: 19.514 ng/ul  
 RT: 8.70 min Scan# 912  
 Delta R.T. -0.00 min  
 Lab File: BG047346.D  
 Acq: 18 Nov 2020 19:27

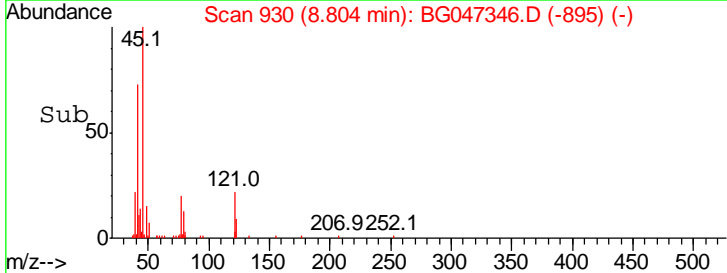
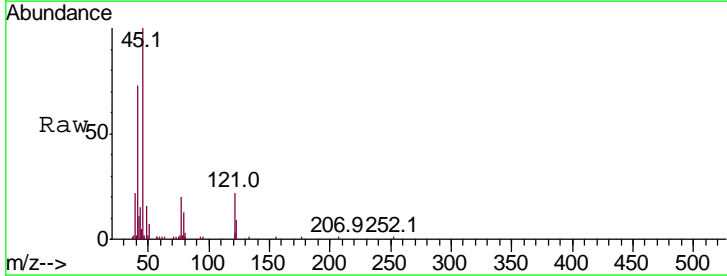
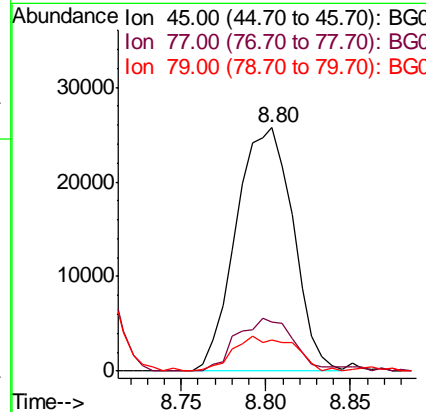
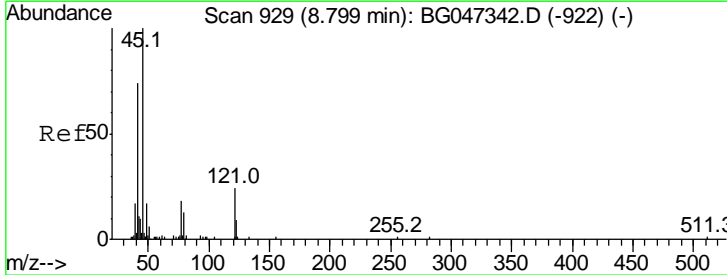
**Instrument :**  
 BNA\_G  
**ClientSampled :**  
 SICV008

Tgt Ion:108 Resp: 55297  
 Ion Ratio Lower Upper  
 108 100  
 107 93.8 71.4 107.0

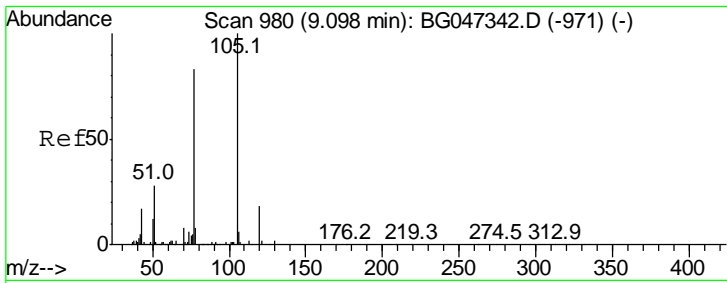


#14  
 2,2'-oxybis(1-Chloropropane)  
 Concen: 20.034 ng/ul  
 RT: 8.80 min Scan# 930  
 Delta R.T. 0.01 min  
 Lab File: BG047346.D  
 Acq: 18 Nov 2020 19:27

Tgt Ion: 45 Resp: 60328  
 Ion Ratio Lower Upper  
 45 100  
 77 20.0 15.0 22.4  
 79 12.7 11.4 17.2



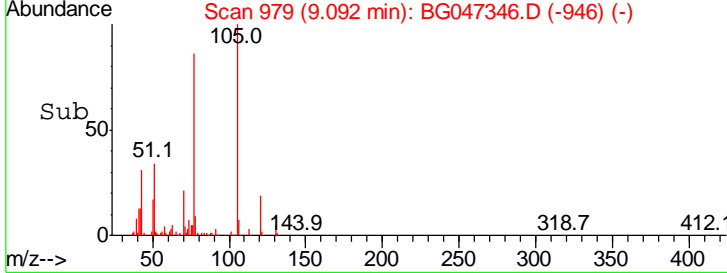
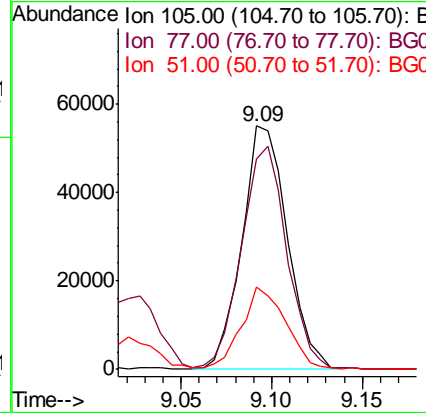
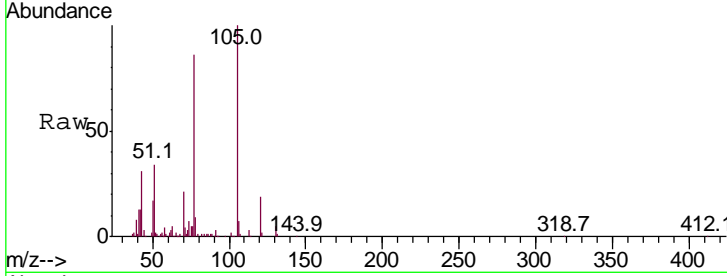




#16  
 Acetophenone  
 Concen: 20.037 ng/ul  
 RT: 9.09 min Scan# 979  
 Delta R.T. -0.01 min  
 Lab File: BG047346.D  
 Acq: 18 Nov 2020 19:27

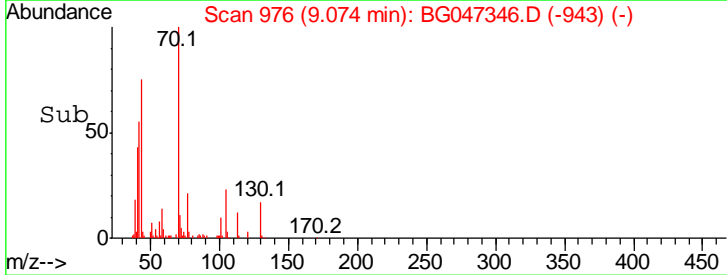
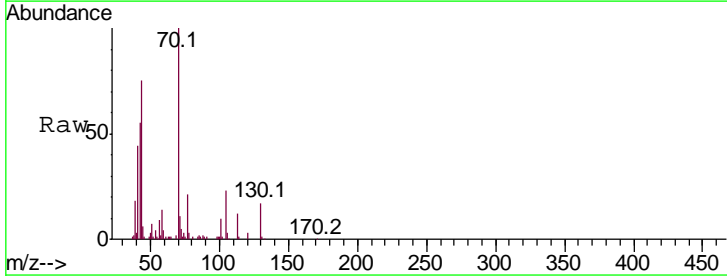
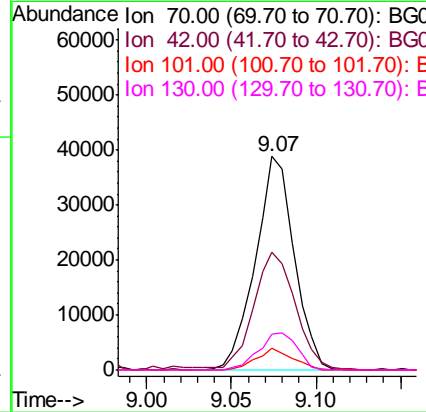
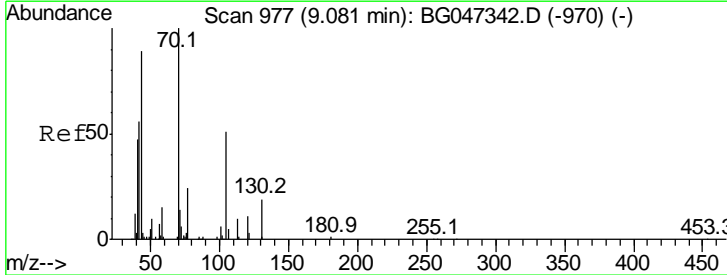
**Instrument :**  
 BNA\_G  
**ClientSampled :**  
 SICV008

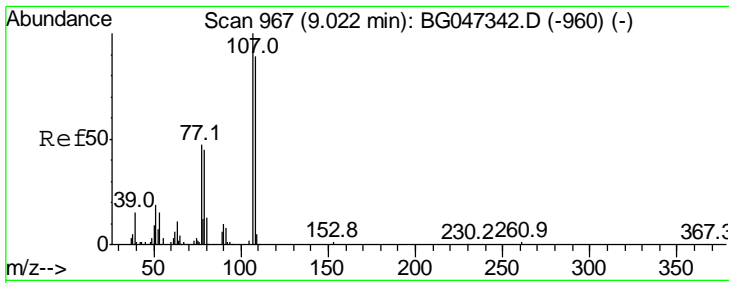
Tgt Ion	Resp	Lower	Upper
105	100		
77	86.2	70.2	105.2
51	33.7	24.1	36.1



#17  
 N-Nitroso-di-n-propylamine  
 Concen: 21.464 ng/ul  
 RT: 9.07 min Scan# 976  
 Delta R.T. -0.01 min  
 Lab File: BG047346.D  
 Acq: 18 Nov 2020 19:27

Tgt Ion	Resp	Lower	Upper
70	100		
42	55.2	44.9	67.3
101	10.0	4.6	7.0#
130	17.0	15.2	22.8

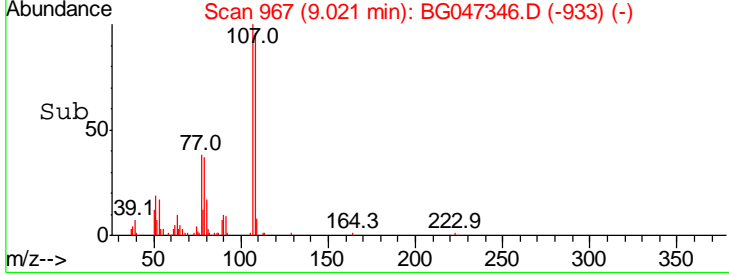
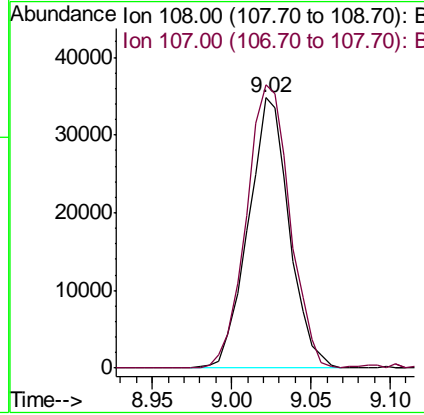
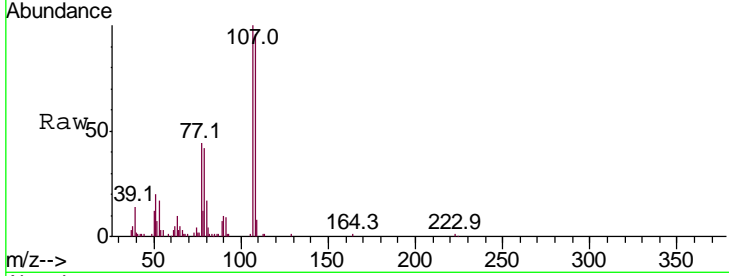




#18  
 4-Methylphenol  
 Concen: 20.391 ng/ul  
 RT: 9.02 min Scan# 967  
 Delta R.T. -0.00 min  
 Lab File: BG047346.D  
 Acq: 18 Nov 2020 19:27

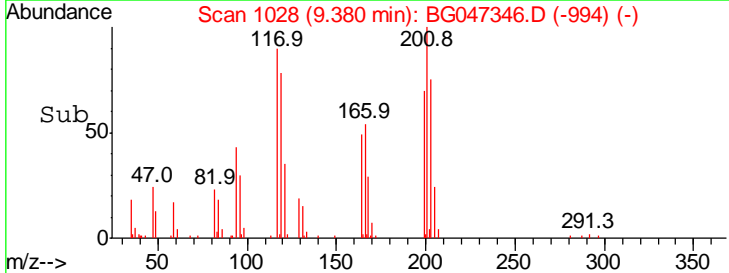
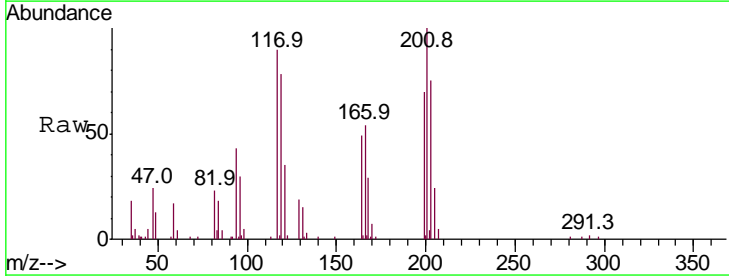
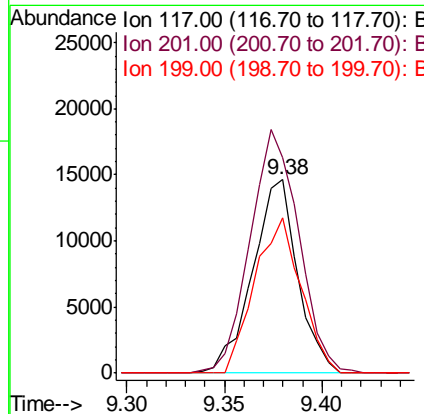
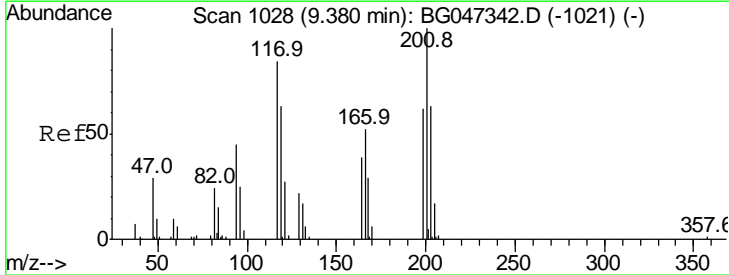
**Instrument :**  
 BNA\_G  
**ClientSampled :**  
 SICV008

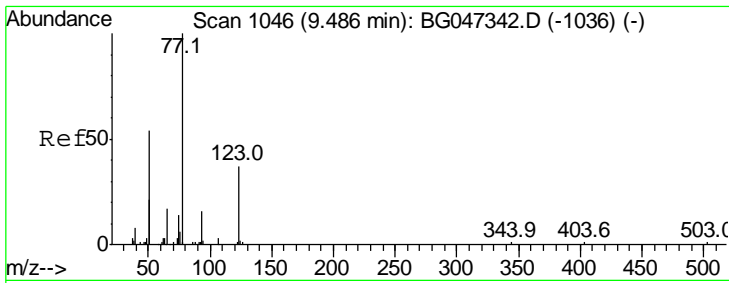
Tgt Ion	Resp	Lower	Upper
108	62331		
108	100		
107	104.7	90.0	135.0



#19  
 Hexachloroethane  
 Concen: 19.557 ng/ul  
 RT: 9.38 min Scan# 1028  
 Delta R.T. -0.00 min  
 Lab File: BG047346.D  
 Acq: 18 Nov 2020 19:27

Tgt Ion	Resp	Lower	Upper
117	23370		
117	100		
201	111.4	101.0	151.6
199	80.4	59.1	88.7

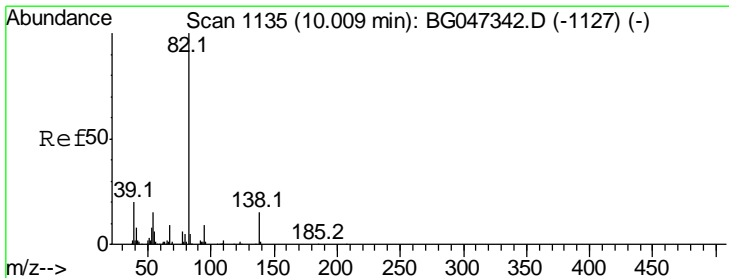
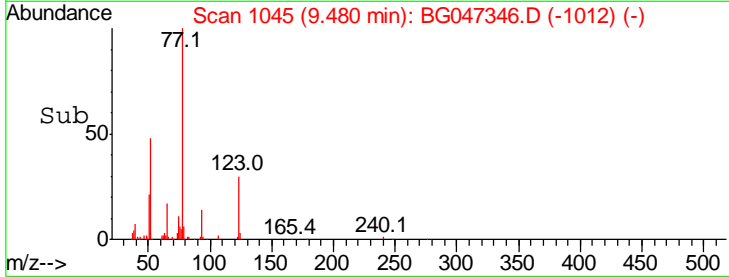
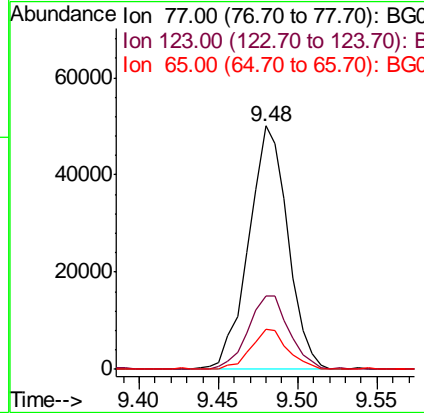
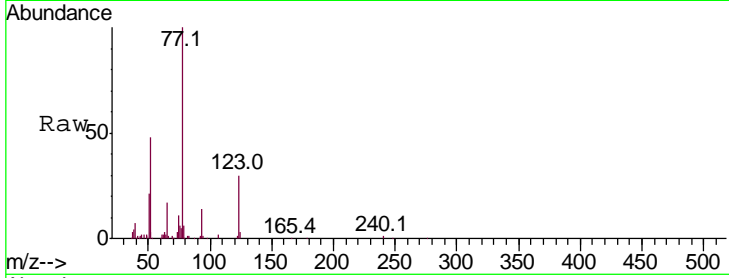




#22  
 Nitrobenzene  
 Concen: 20.866 ng/ul  
 RT: 9.48 min Scan# 1045  
 Delta R.T. -0.01 min  
 Lab File: BG047346.D  
 Acq: 18 Nov 2020 19:27

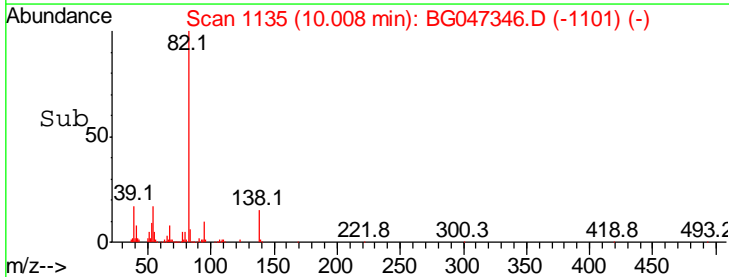
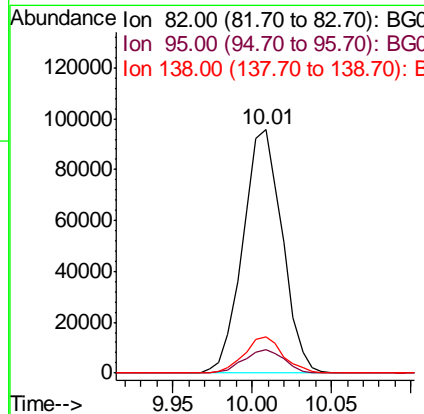
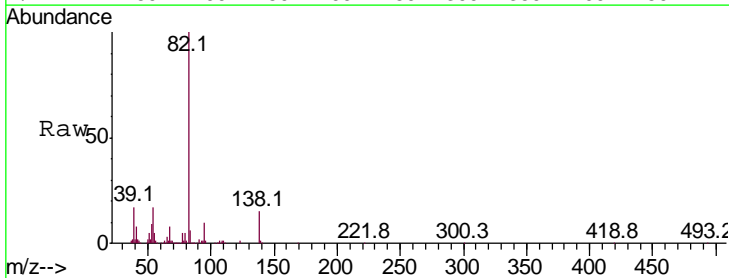
Instrument :  
 BNA\_G  
 ClientSampled :  
 SICV008

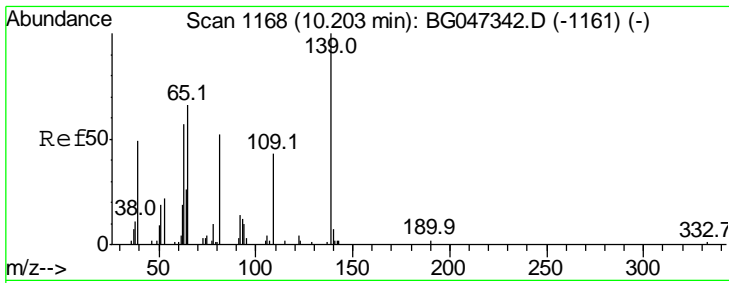
Tgt Ion	Resp	Lower	Upper
77	100		
123	29.9	29.2	43.8
65	16.6	13.6	20.4



#23  
 Isophorone  
 Concen: 20.187 ng/ul  
 RT: 10.01 min Scan# 1135  
 Delta R.T. -0.00 min  
 Lab File: BG047346.D  
 Acq: 18 Nov 2020 19:27

Tgt Ion	Resp	Lower	Upper
82	100		
95	9.5	7.3	10.9
138	14.8	12.3	18.5

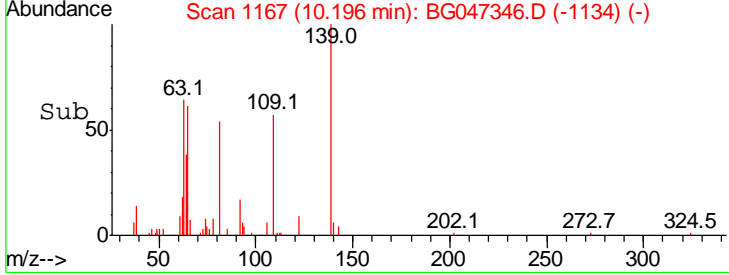
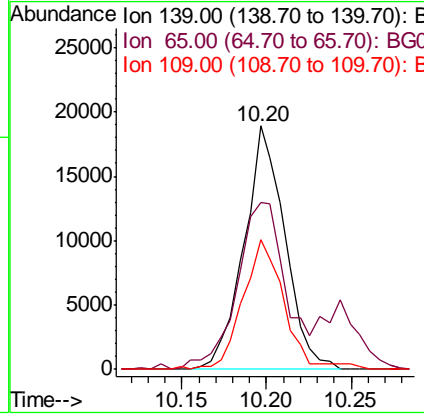
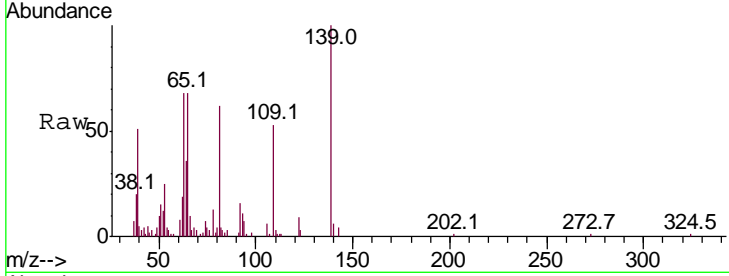




#25  
 2-Nitrophenol  
 Concen: 21.162 ng/ul  
 RT: 10.20 min Scan# 1167  
 Delta R.T. -0.01 min  
 Lab File: BG047346.D  
 Acq: 18 Nov 2020 19:27

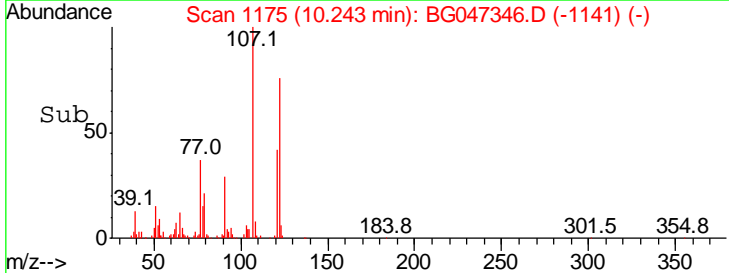
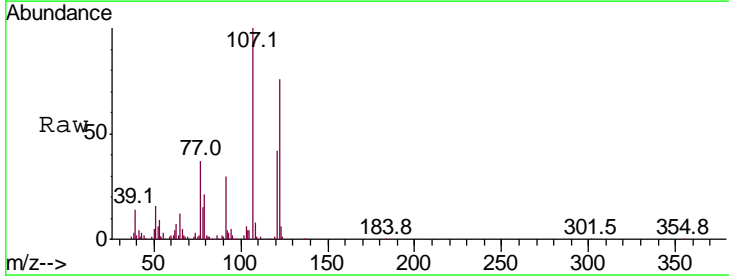
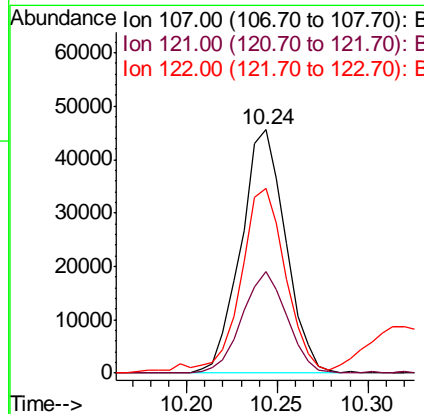
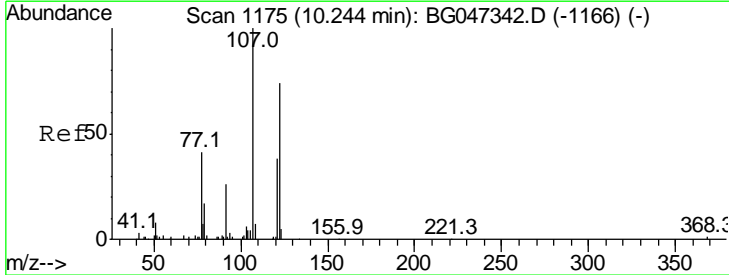
Instrument :  
 BNA\_G  
 ClientSampleId :  
 SICV008

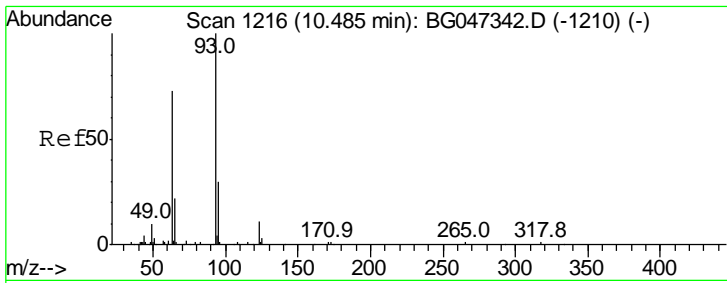
Tgt Ion	Resp	Lower	Upper
139	31815		
65	68.5	53.0	79.6
109	53.5	34.5	51.7#



#26  
 2,4-Dimethylphenol  
 Concen: 19.780 ng/ul  
 RT: 10.24 min Scan# 1175  
 Delta R.T. -0.00 min  
 Lab File: BG047346.D  
 Acq: 18 Nov 2020 19:27

Tgt Ion	Resp	Lower	Upper
107	78153		
121	41.6	30.6	46.0
122	76.0	60.4	90.6

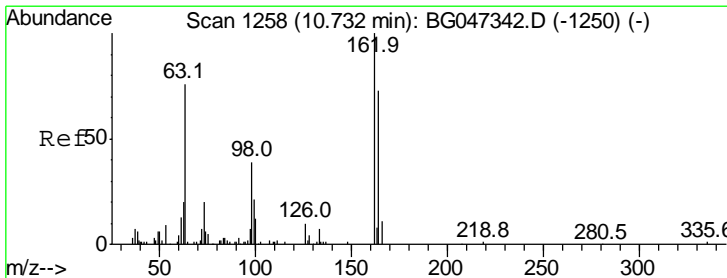
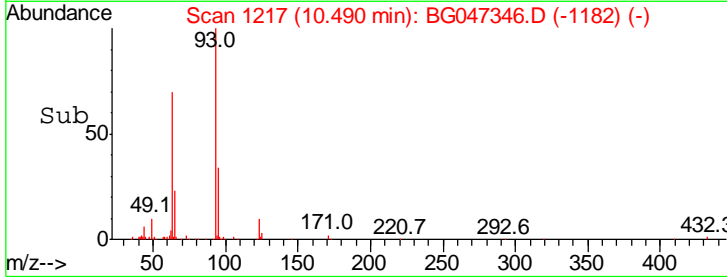
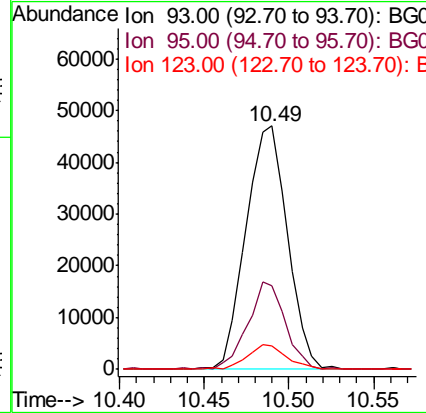
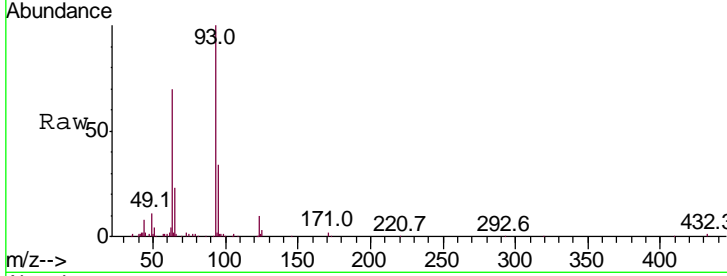




#27  
 Bis(2-Chloroethoxy)methane  
 Concen: 20.266 ng/ul  
 RT: 10.49 min Scan# 1217  
 Delta R.T. 0.01 min  
 Lab File: BG047346.D  
 Acq: 18 Nov 2020 19:27

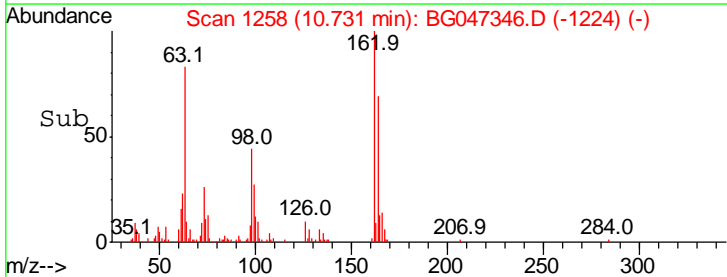
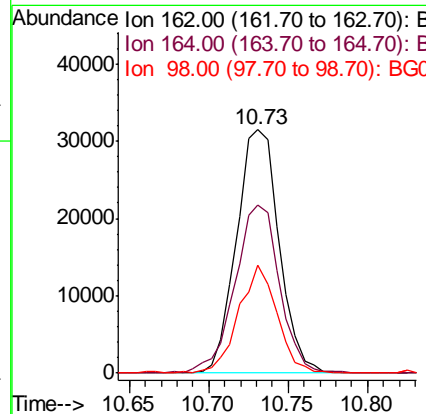
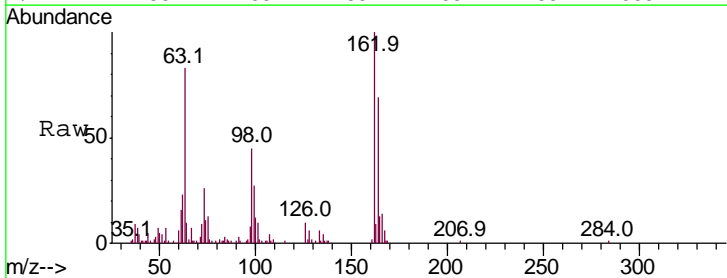
Instrument :  
 BNA\_G  
 ClientSampled :  
 SICV008

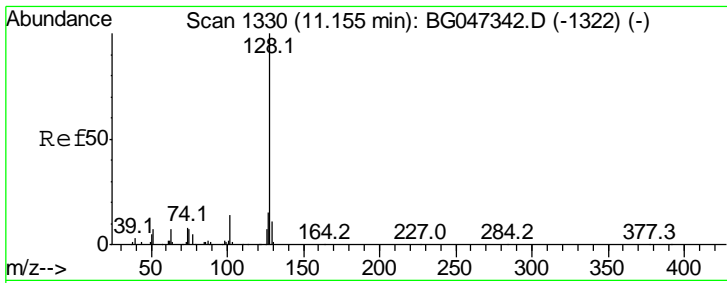
Tgt Ion	Resp	Lower	Upper
93	100		
95	34.2	23.8	35.8
123	9.6	8.5	12.7



#29  
 2,4-Dichlorophenol  
 Concen: 20.136 ng/ul  
 RT: 10.73 min Scan# 1258  
 Delta R.T. -0.00 min  
 Lab File: BG047346.D  
 Acq: 18 Nov 2020 19:27

Tgt Ion	Resp	Lower	Upper
162	100		
164	68.9	58.6	87.8
98	44.6	31.4	47.2

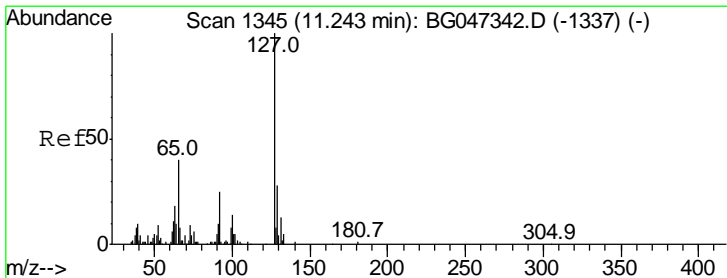
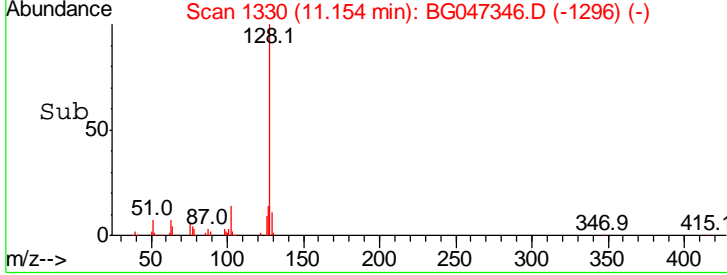
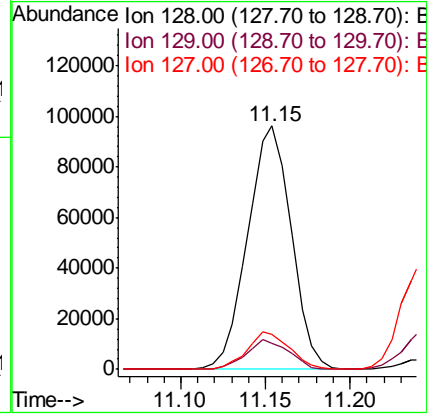
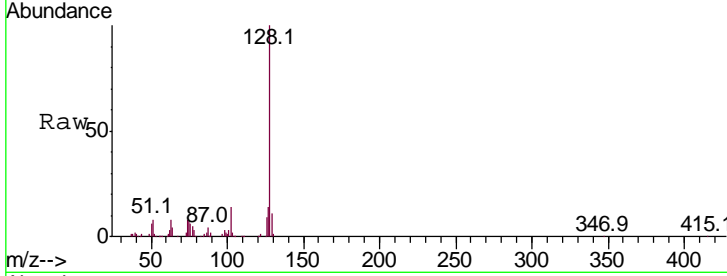




#30  
 Naphthalene  
 Concen: 19.260 ng/ul  
 RT: 11.15 min Scan# 1330  
 Delta R.T. -0.00 min  
 Lab File: BG047346.D  
 Acq: 18 Nov 2020 19:27

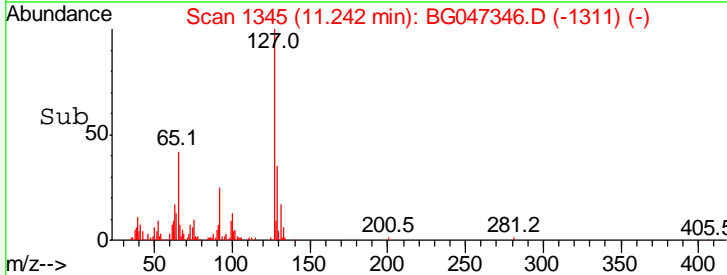
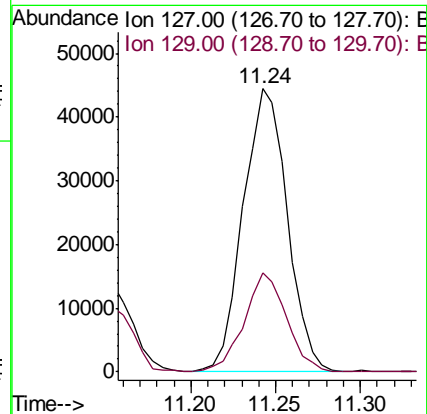
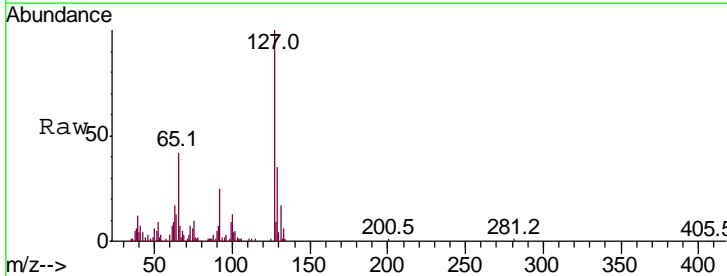
Instrument :  
 BNA\_G  
 ClientSampled :  
 SICV008

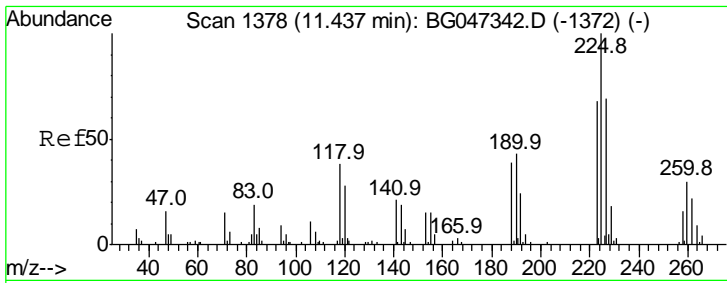
Tgt Ion	Resp	Lower	Upper
128	172996		
129	10.7	9.1	13.7
127	14.3	12.0	18.0



#32  
 4-Chloroaniline  
 Concen: 21.430 ng/ul  
 RT: 11.24 min Scan# 1345  
 Delta R.T. -0.00 min  
 Lab File: BG047346.D  
 Acq: 18 Nov 2020 19:27

Tgt Ion	Resp	Lower	Upper
127	80624		
129	34.8	22.9	34.3#



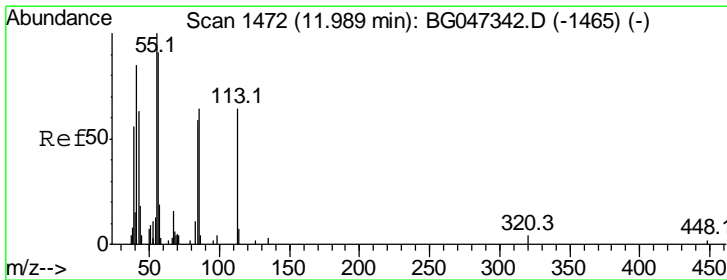
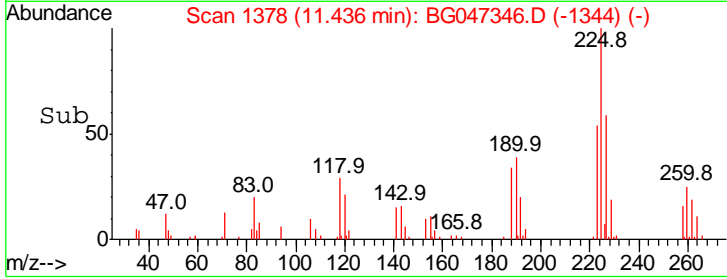
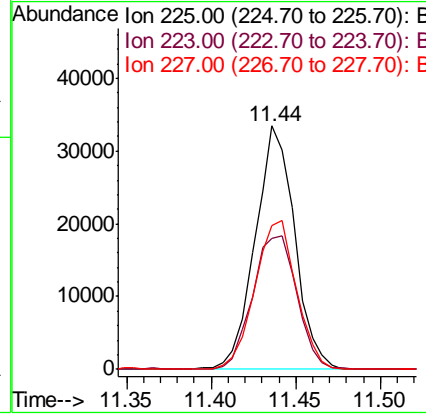
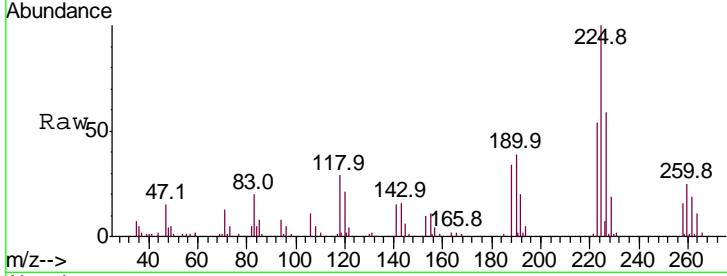


#33

Hexachlorobutadiene  
 Concen: 19.684 ng/ul  
 RT: 11.44 min Scan# 1378  
 Delta R.T. -0.00 min  
 Lab File: BG047346.D  
 Acq: 18 Nov 2020 19:27

Instrument :  
 BNA\_G  
 ClientSampled :  
 SICV008

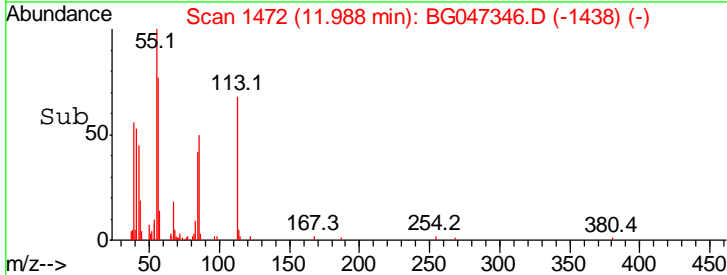
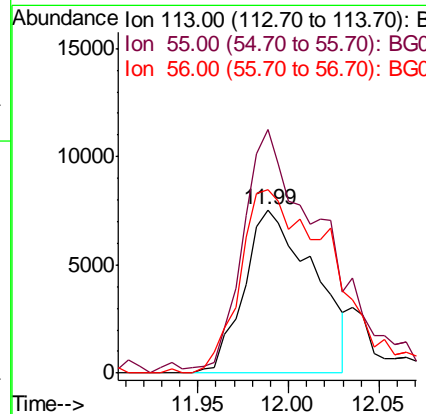
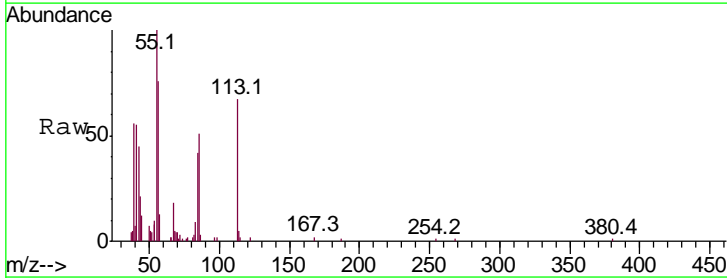
Tgt Ion	Resp	Lower	Upper
225	100		
223	53.9	54.1	81.1#
227	59.0	59.7	89.5#

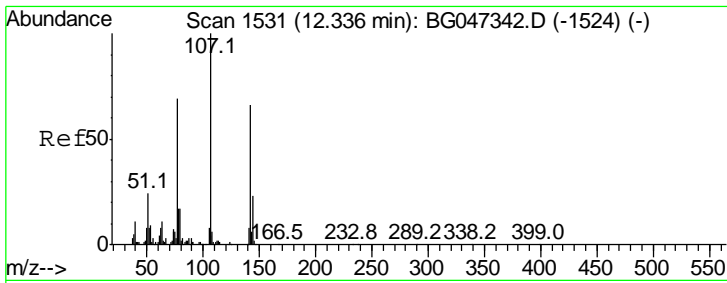


#34

Caprolactam  
 Concen: 18.239 ng/ul  
 RT: 11.99 min Scan# 1472  
 Delta R.T. -0.00 min  
 Lab File: BG047346.D  
 Acq: 18 Nov 2020 19:27

Tgt Ion	Resp	Lower	Upper
113	100		
55	149.3	125.0	187.4
56	112.9	115.6	173.4#

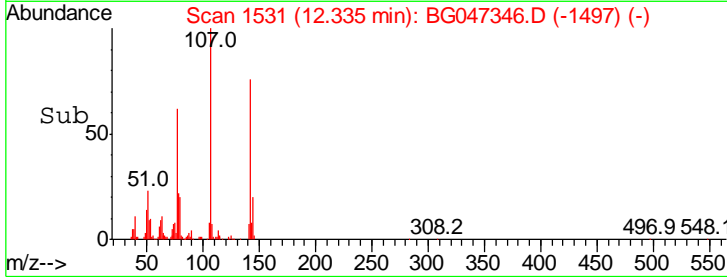
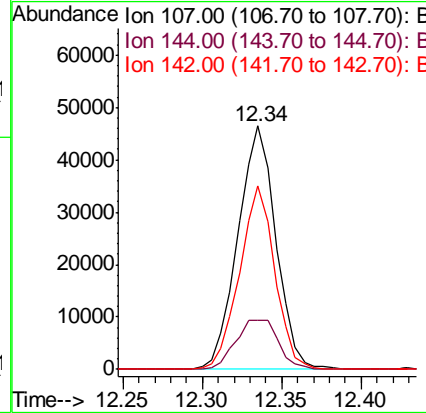
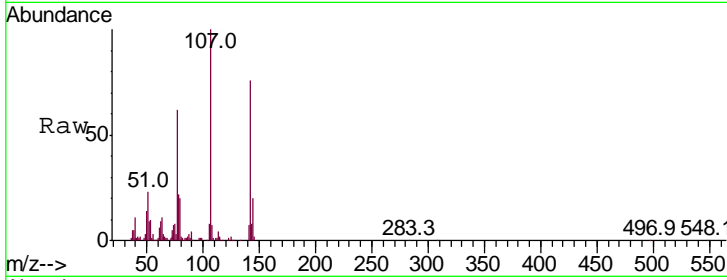




#35  
 4-Chloro-3-methylphenol  
 Concen: 20.974 ng/ul  
 RT: 12.34 min Scan# 1531  
 Delta R.T. -0.00 min  
 Lab File: BG047346.D  
 Acq: 18 Nov 2020 19:27

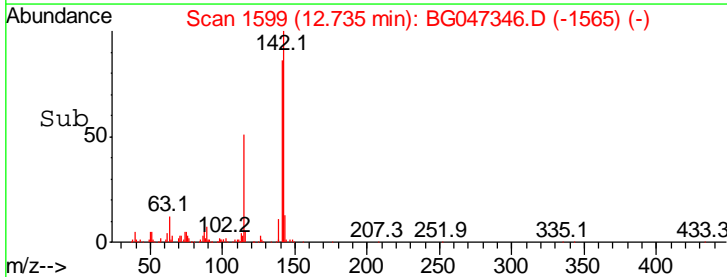
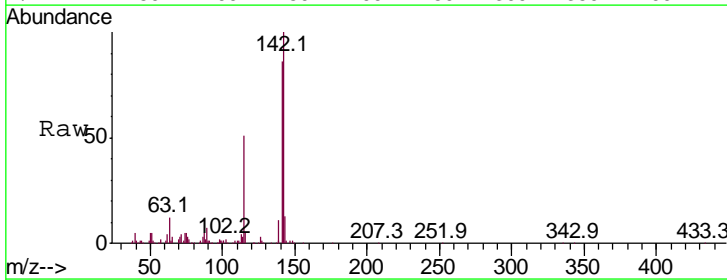
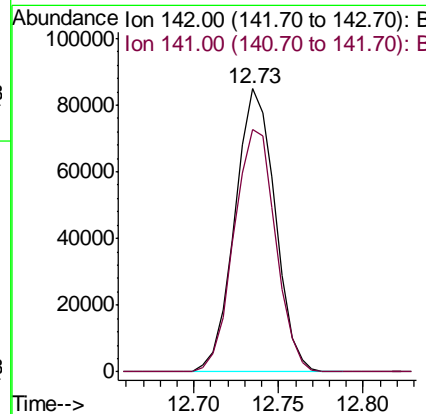
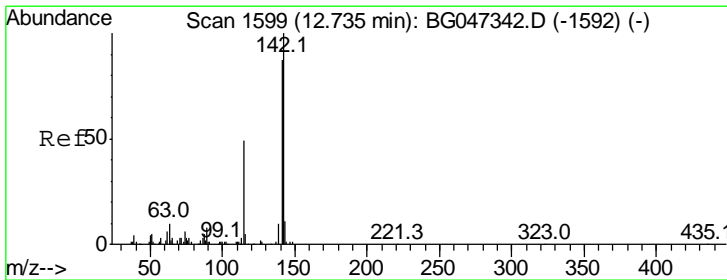
Instrument :  
 BNA\_G  
 ClientSampled :  
 SICV008

Tgt Ion	Resp	Lower	Upper
107	77116		
144	20.0	18.0	27.0
142	75.6	52.8	79.2

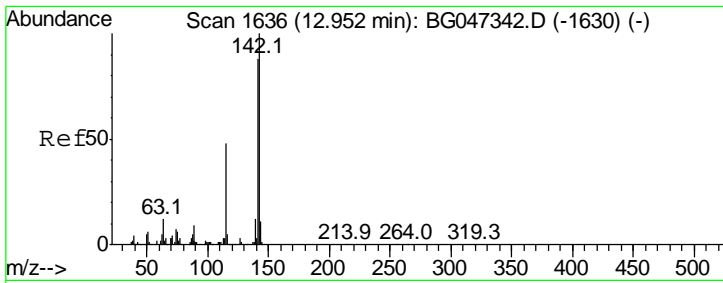


#36  
 2-Methylnaphthalene  
 Concen: 20.672 ng/ul  
 RT: 12.73 min Scan# 1599  
 Delta R.T. -0.00 min  
 Lab File: BG047346.D  
 Acq: 18 Nov 2020 19:27

Tgt Ion	Resp	Lower	Upper
142	140683		
141	85.6	69.4	104.0



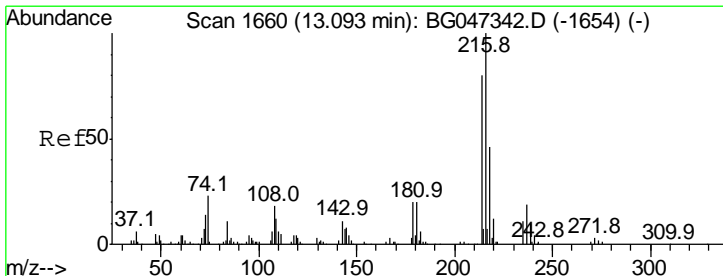
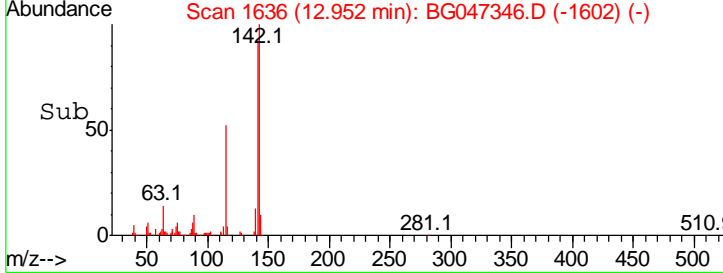
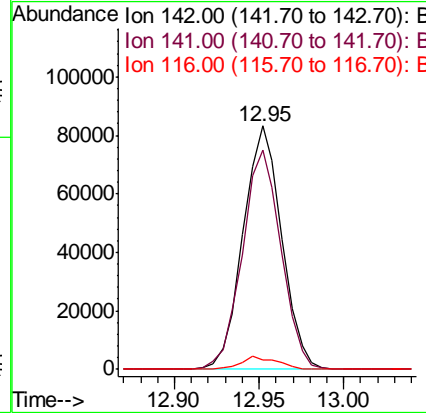
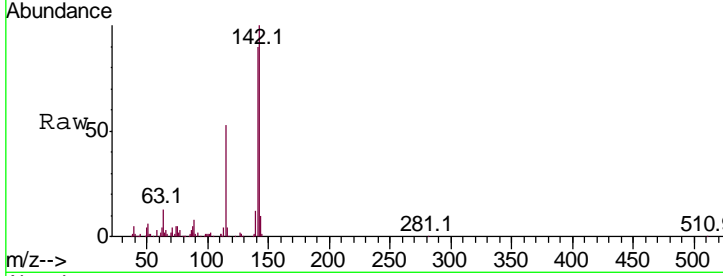




#37  
 1-Methylnaphthalene  
 Concen: 20.106 ng/ul  
 RT: 12.95 min Scan# 1636  
 Delta R.T. -0.00 min  
 Lab File: BG047346.D  
 Acq: 18 Nov 2020 19:27

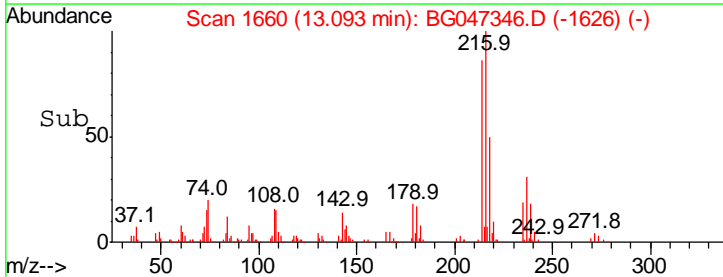
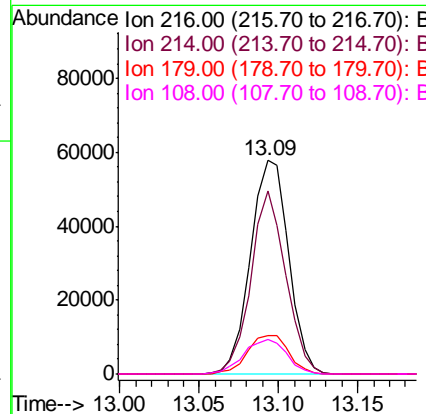
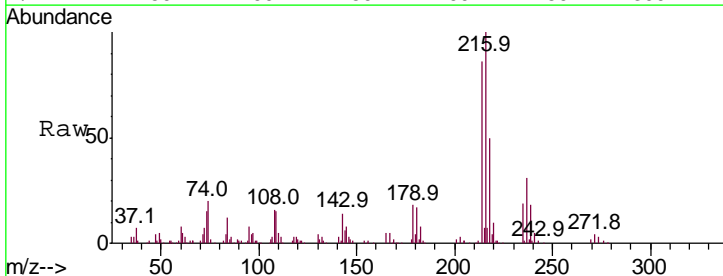
Instrument :  
 BNA\_G  
 ClientSampled :  
 SICV008

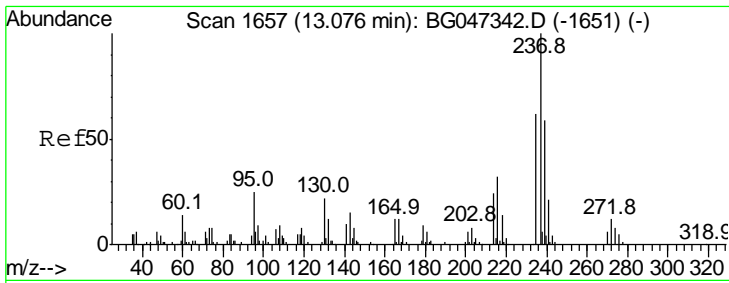
Tgt Ion	Resp	Lower	Upper
142	132230		
141	90.0	70.5	105.7
116	3.9	3.9	5.9



#39  
 1,2,4,5-Tetrachlorobenzene  
 Concen: 19.697 ng/ul  
 RT: 13.09 min Scan# 1660  
 Delta R.T. -0.00 min  
 Lab File: BG047346.D  
 Acq: 18 Nov 2020 19:27

Tgt Ion	Resp	Lower	Upper
216	96710		
214	85.7	63.5	95.3
179	17.7	16.2	24.4
108	16.2	14.5	21.7

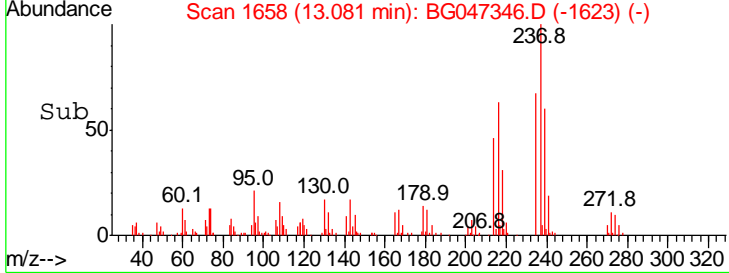
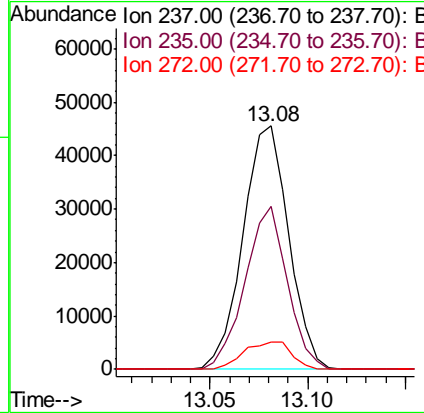
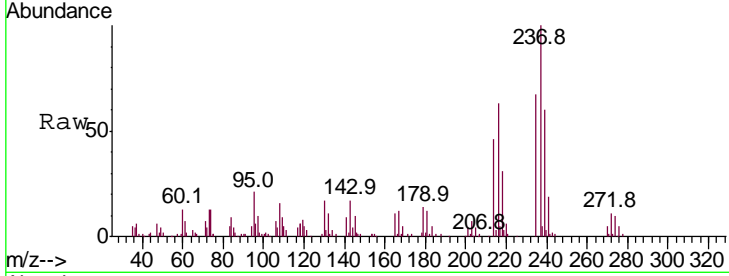




#40  
 Hexachlorocyclopentadiene  
 Concen: 21.218 ng/ul  
 RT: 13.08 min Scan# 1658  
 Delta R.T. 0.01 min  
 Lab File: BG047346.D  
 Acq: 18 Nov 2020 19:27

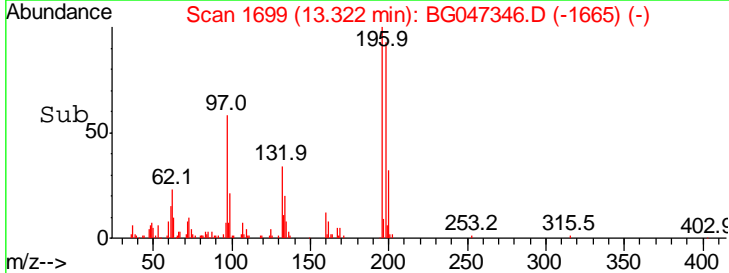
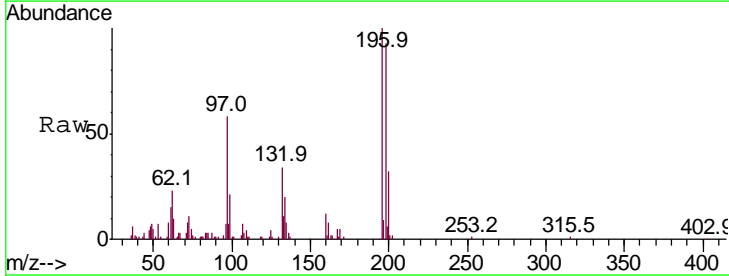
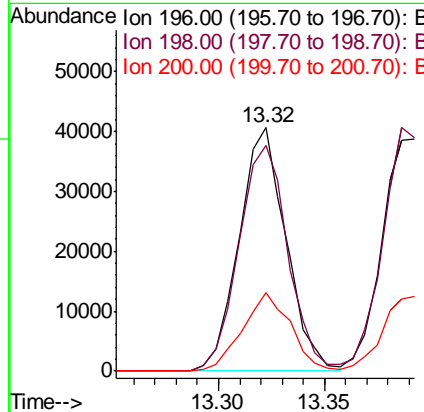
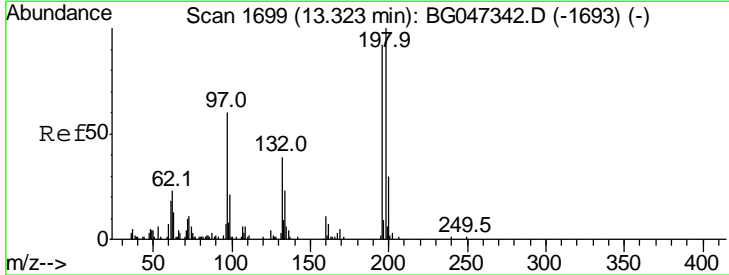
**Instrument :**  
 BNA\_G  
**ClientSampleId :**  
 SICV008

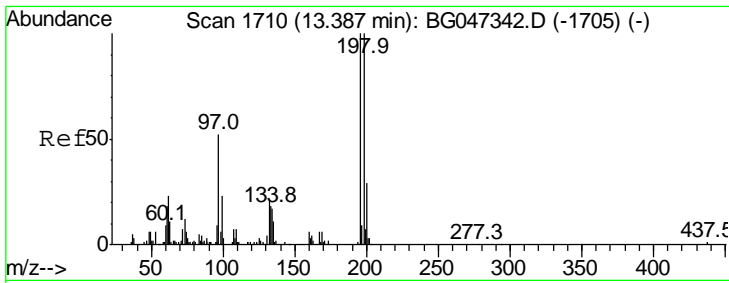
Tgt Ion	Resp	Lower	Upper
237	73971		
235	67.0	49.2	73.8
272	11.1	9.3	13.9



#41  
 2,4,6-Trichlorophenol  
 Concen: 20.720 ng/ul  
 RT: 13.32 min Scan# 1699  
 Delta R.T. -0.00 min  
 Lab File: BG047346.D  
 Acq: 18 Nov 2020 19:27

Tgt Ion	Resp	Lower	Upper
196	62461		
198	92.7	86.5	129.7
200	32.1	25.7	38.5

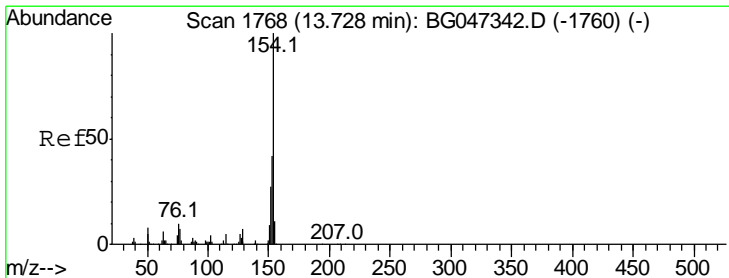
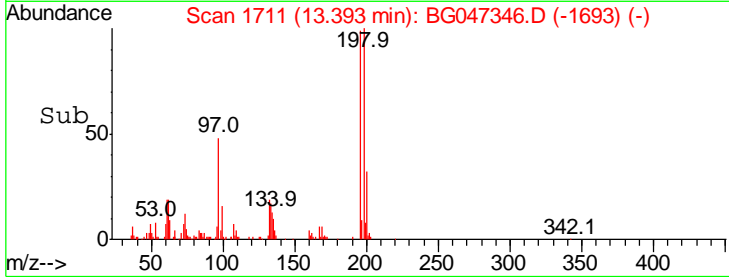
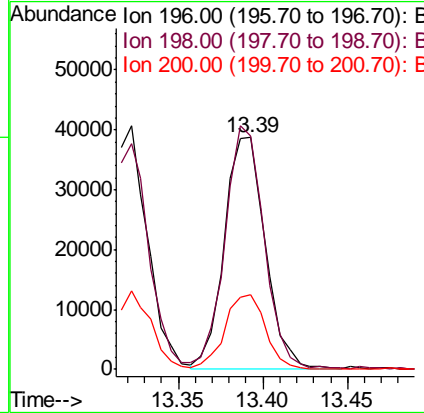
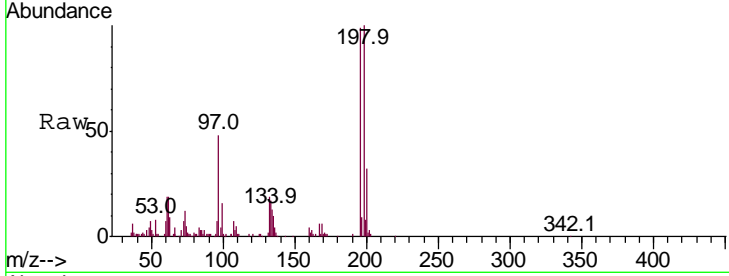




#42  
 2,4,5-Trichlorophenol  
 Concen: 20.479 ng/ul  
 RT: 13.39 min Scan# 1711  
 Delta R.T. 0.01 min  
 Lab File: BG047346.D  
 Acq: 18 Nov 2020 19:27

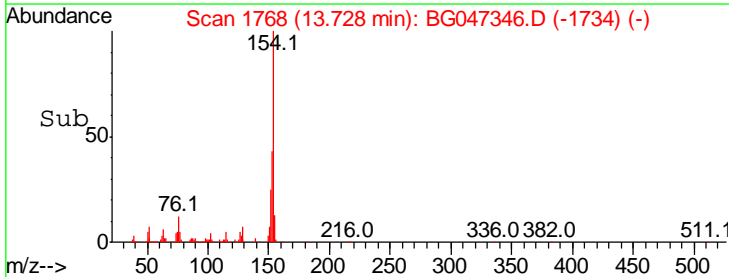
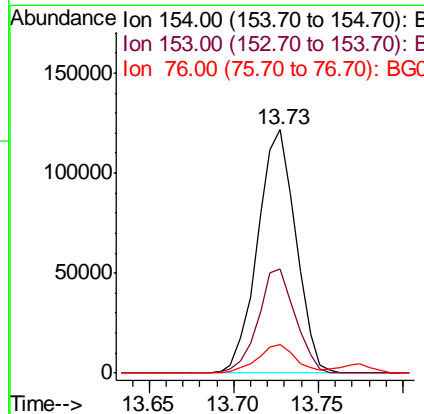
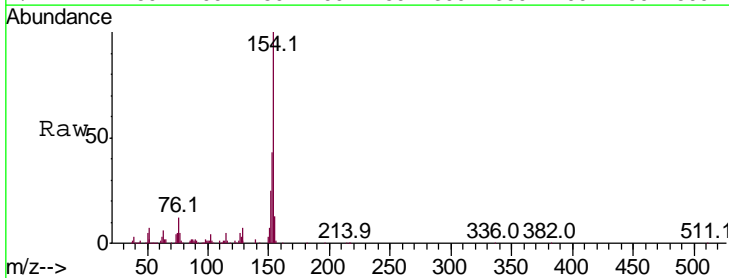
Instrument :  
 BNA\_G  
 ClientSampled :  
 SICV008

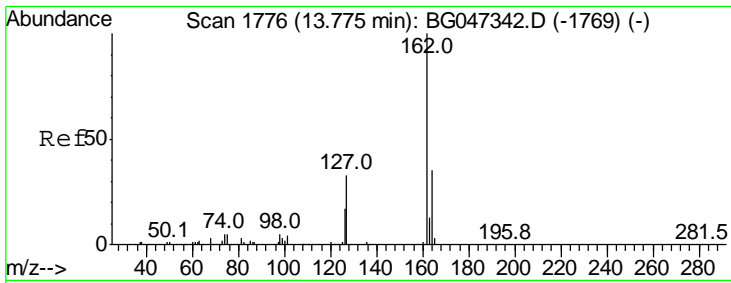
Tgt Ion	Resp	Lower	Upper
196	65052		
196	100		
198	100.6	80.7	121.1
200	32.4	25.9	38.9



#43  
 1,1'-Biphenyl  
 Concen: 19.977 ng/ul  
 RT: 13.73 min Scan# 1768  
 Delta R.T. -0.00 min  
 Lab File: BG047346.D  
 Acq: 18 Nov 2020 19:27

Tgt Ion	Resp	Lower	Upper
154	190329		
154	100		
153	42.7	33.4	50.2
76	11.6	7.9	11.9

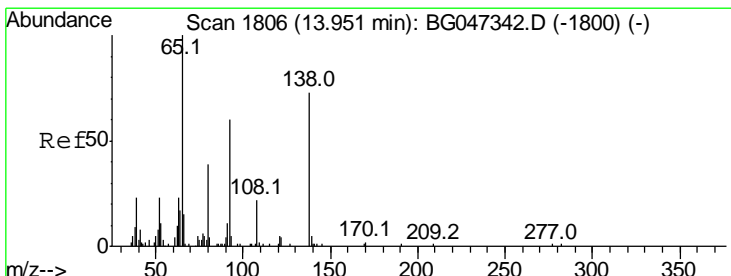
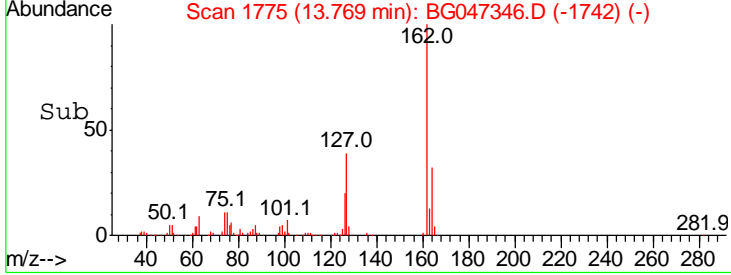
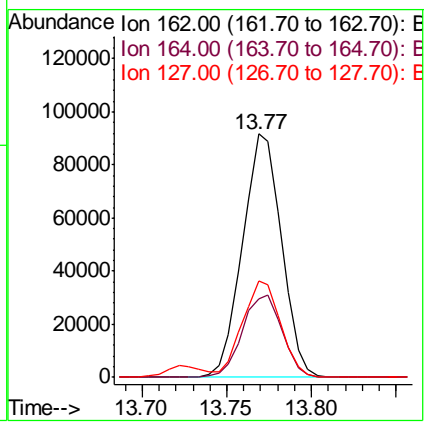
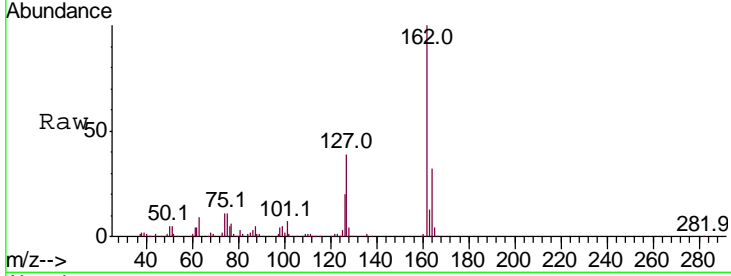




#44  
 2-Chloronaphthalene  
 Concen: 19.376 ng/ul  
 RT: 13.77 min Scan# 1775  
 Delta R.T. -0.01 min  
 Lab File: BG047346.D  
 Acq: 18 Nov 2020 19:27

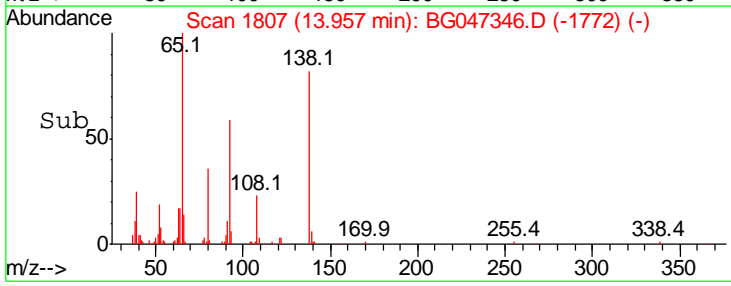
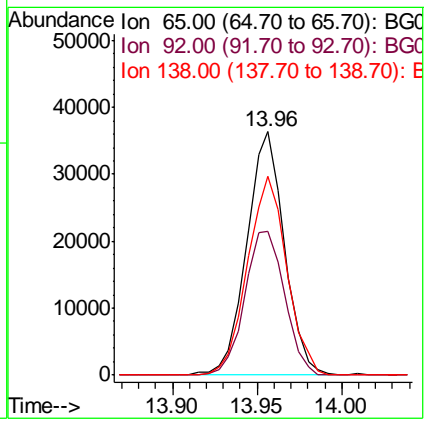
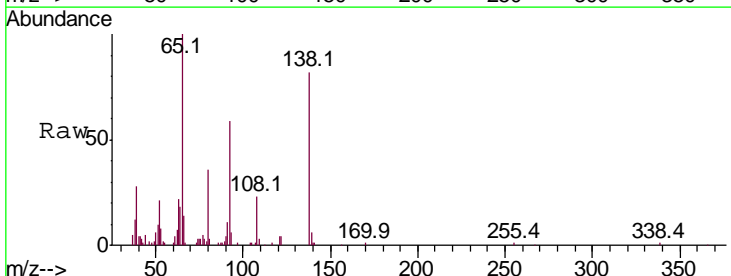
Instrument :  
 BNA\_G  
 ClientSampleId :  
 SICV008

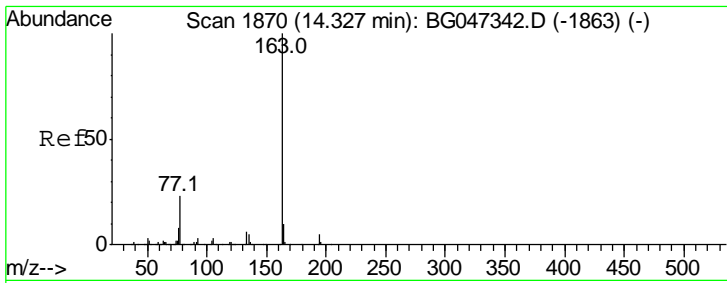
Tgt Ion	Resp	Lower	Upper
162	100		
164	32.4	27.9	41.9
127	39.4	29.3	43.9



#45  
 2-Nitroaniline  
 Concen: 21.617 ng/ul  
 RT: 13.96 min Scan# 1807  
 Delta R.T. 0.01 min  
 Lab File: BG047346.D  
 Acq: 18 Nov 2020 19:27

Tgt Ion	Resp	Lower	Upper
65	100		
92	58.9	47.9	71.9
138	81.7	58.2	87.2

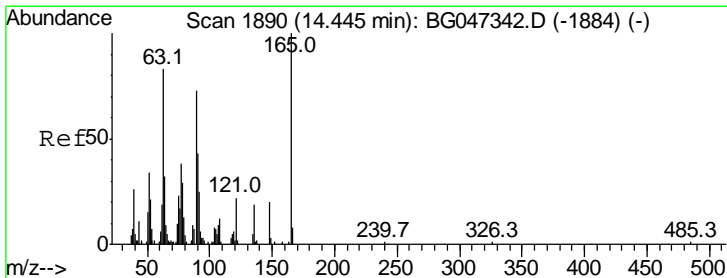
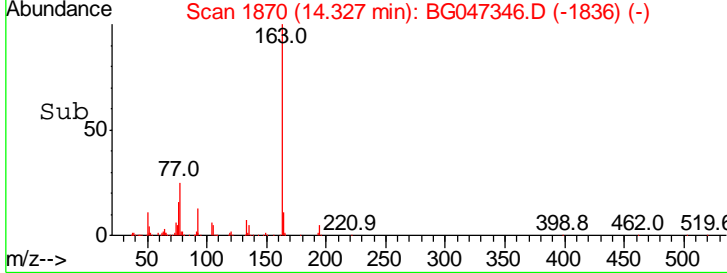
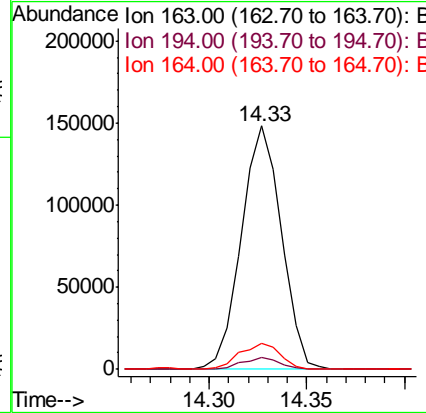
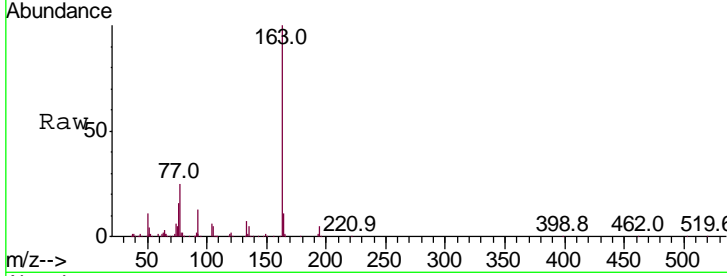




#47  
 Dimethylphthalate  
 Concen: 19.505 ng/ul  
 RT: 14.33 min Scan# 1870  
 Delta R.T. -0.00 min  
 Lab File: BG047346.D  
 Acq: 18 Nov 2020 19:27

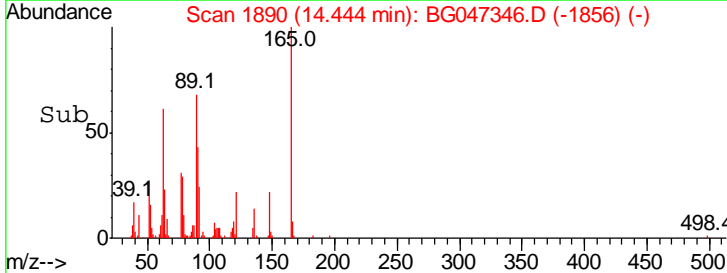
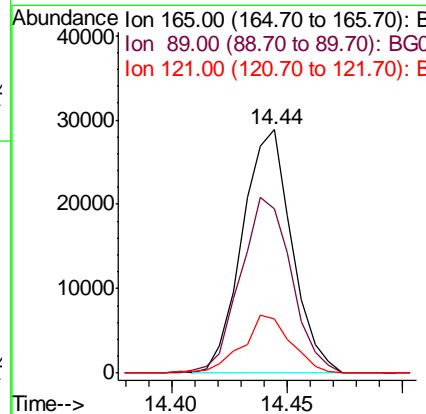
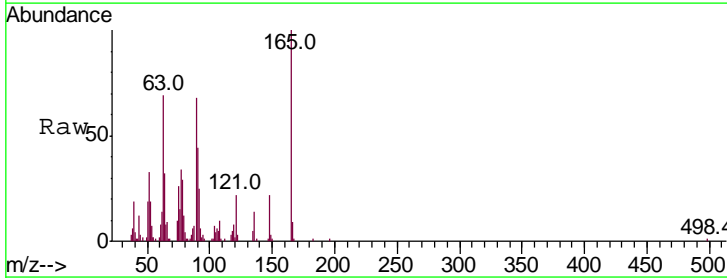
**Instrument :**  
 BNA\_G  
**ClientSampled :**  
 SICV008

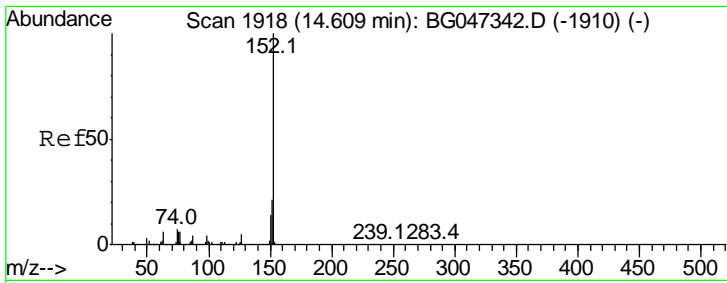
Tgt Ion	Resp	Lower	Upper
163	100		
194	4.8	3.8	5.6
164	10.7	8.3	12.5



#48  
 2,6-Dinitrotoluene  
 Concen: 21.306 ng/ul  
 RT: 14.44 min Scan# 1890  
 Delta R.T. -0.00 min  
 Lab File: BG047346.D  
 Acq: 18 Nov 2020 19:27

Tgt Ion	Resp	Lower	Upper
165	100		
89	67.6	59.0	88.6
121	22.4	17.7	26.5

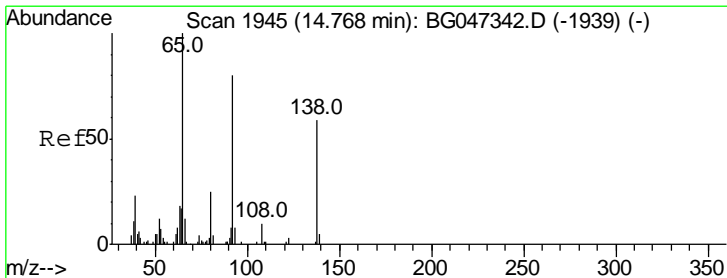
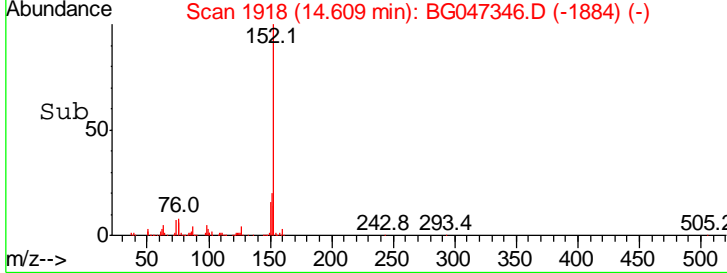
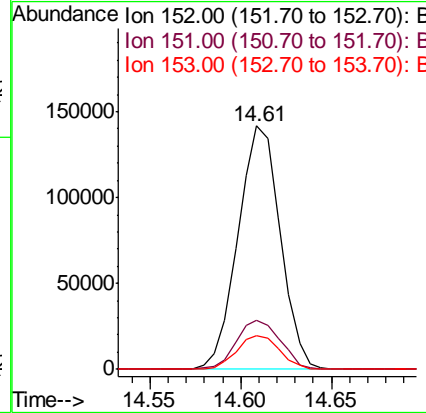
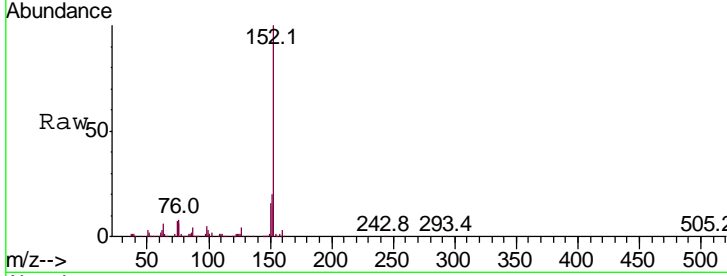




#50  
 Acenaphthylene  
 Concen: 20.131 ng/ul  
 RT: 14.61 min Scan# 1918  
 Delta R.T. -0.00 min  
 Lab File: BG047346.D  
 Acq: 18 Nov 2020 19:27

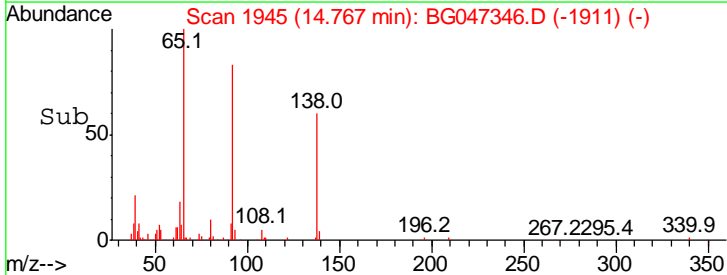
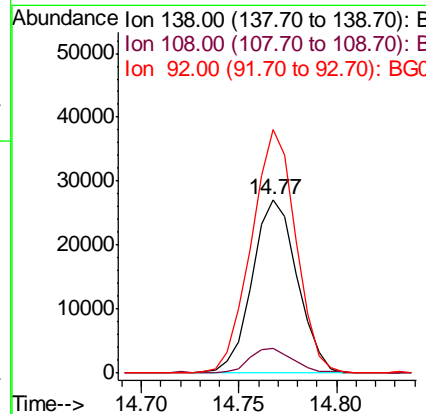
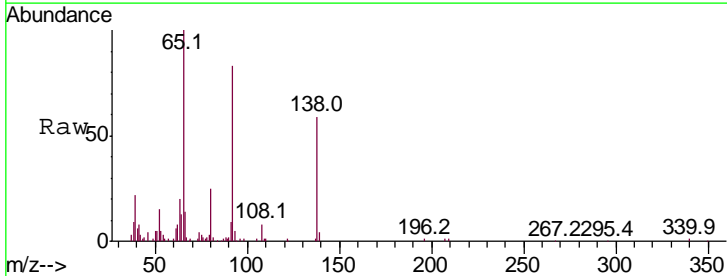
Instrument :  
 BNA\_G  
 ClientSampled :  
 SICV008

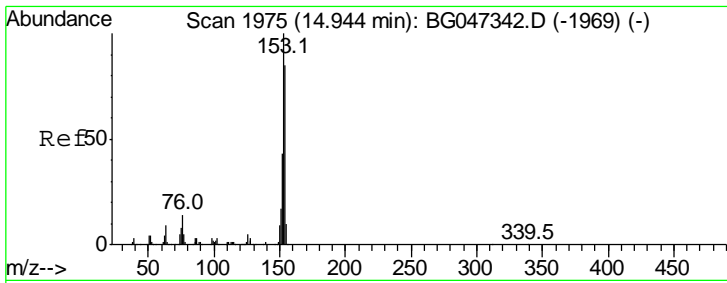
Tgt Ion	Resp	Lower	Upper
152	100		
151	20.4	16.6	24.8
153	13.8	11.0	16.6



#51  
 3-Nitroaniline  
 Concen: 26.036 ng/ul  
 RT: 14.77 min Scan# 1945  
 Delta R.T. -0.00 min  
 Lab File: BG047346.D  
 Acq: 18 Nov 2020 19:27

Tgt Ion	Resp	Lower	Upper
138	100		
108	14.4	14.1	21.1
92	140.6	108.9	163.3

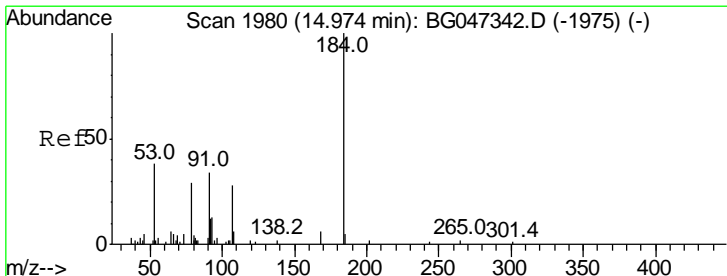
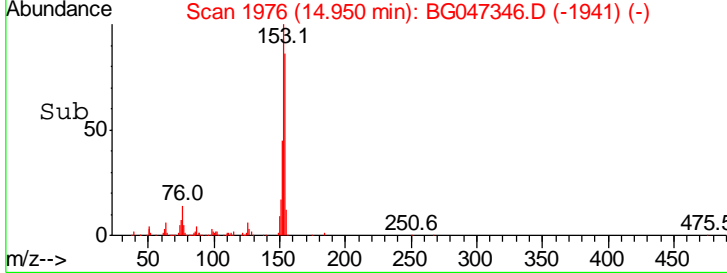
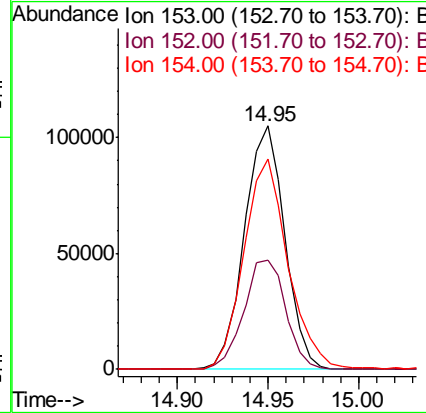
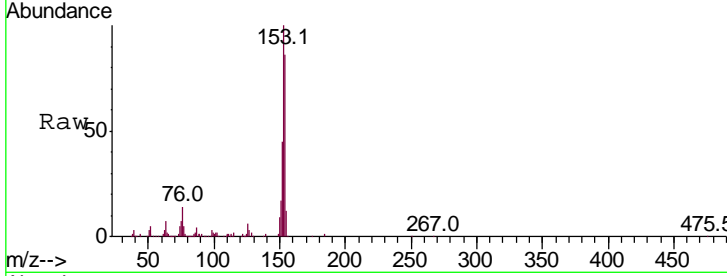




#52  
 Acenaphthene  
 Concen: 19.834 ng/ul  
 RT: 14.95 min Scan# 1976  
 Delta R.T. 0.01 min  
 Lab File: BG047346.D  
 Acq: 18 Nov 2020 19:27

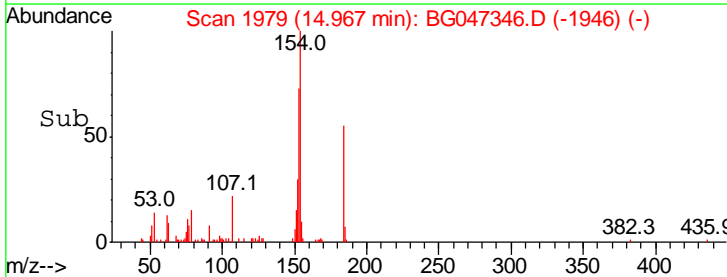
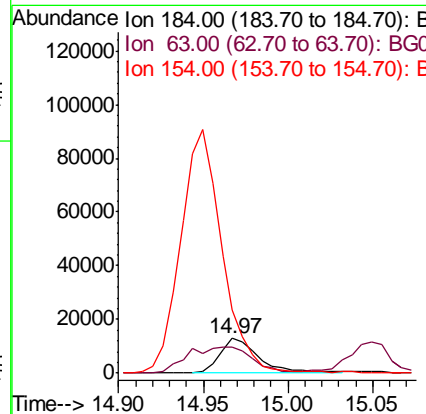
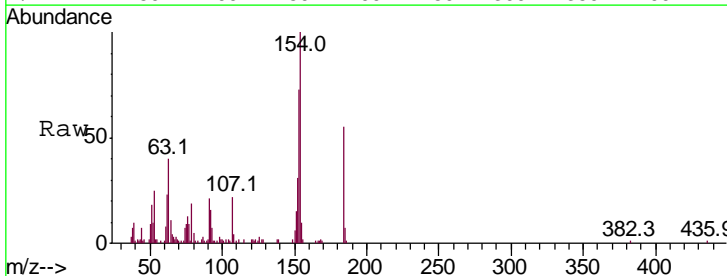
Instrument :  
 BNA\_G  
 ClientSampleID :  
 SICV008

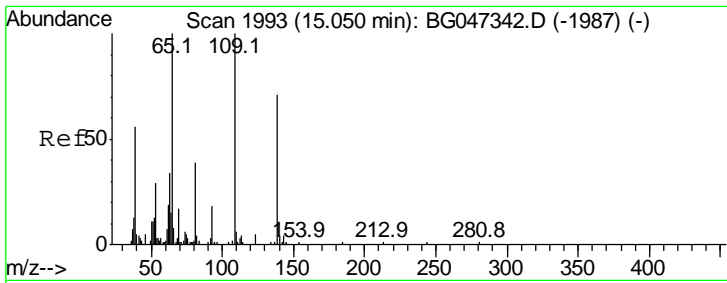
Tgt Ion	Resp	Lower	Upper
153	100		
152	44.8	34.6	52.0
154	86.3	68.0	102.0



#53  
 2,4-Dinitrophenol  
 Concen: 19.983 ng/ul  
 RT: 14.97 min Scan# 1979  
 Delta R.T. -0.01 min  
 Lab File: BG047346.D  
 Acq: 18 Nov 2020 19:27

Tgt Ion	Resp	Lower	Upper
184	100		
63	73.1	46.8	70.2#
154	183.1	78.6	117.8#

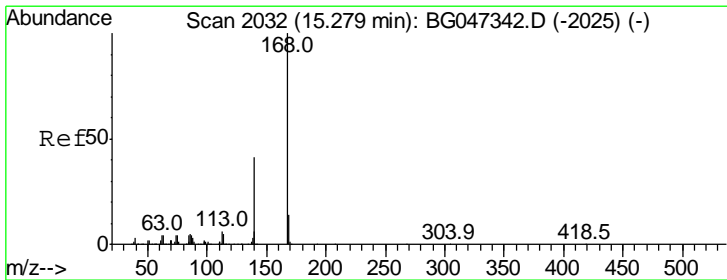
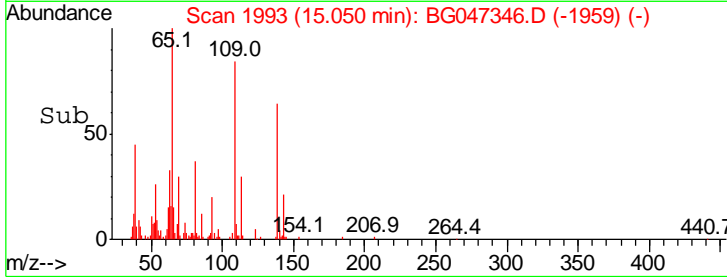
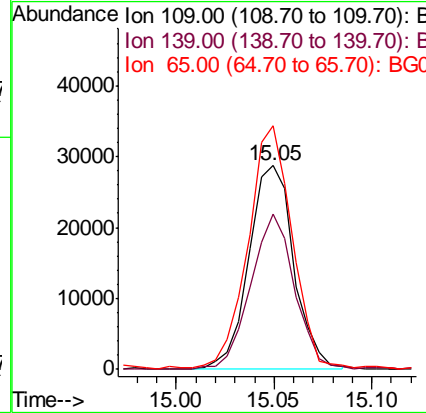
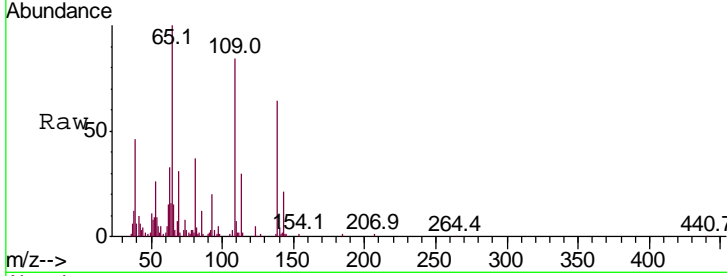




#55  
 4-Nitrophenol  
 Concen: 20.334 ng/ul  
 RT: 15.05 min Scan# 1993  
 Delta R.T. -0.00 min  
 Lab File: BG047346.D  
 Acq: 18 Nov 2020 19:27

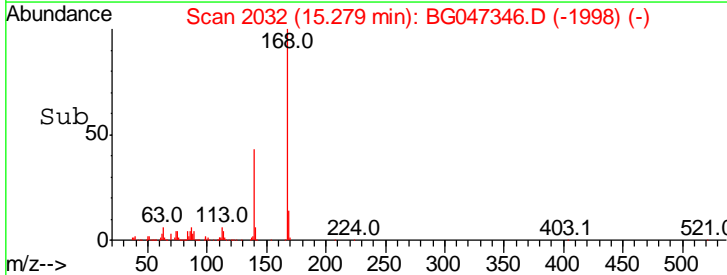
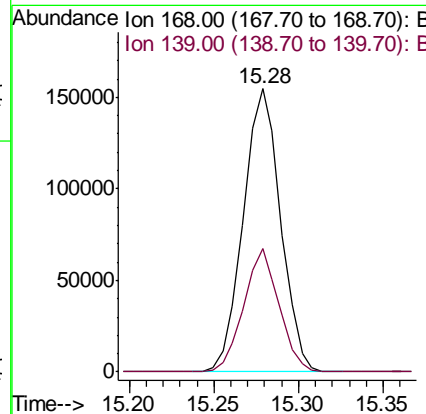
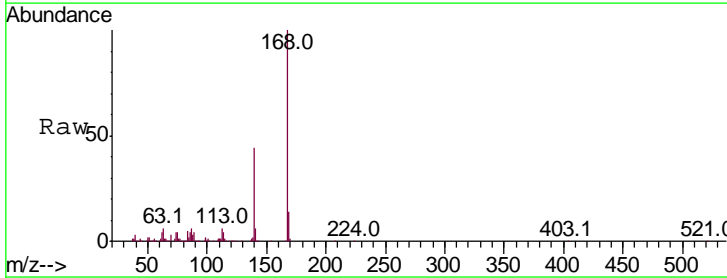
Instrument :  
 BNA\_G  
 ClientSampled :  
 SICV008

Tgt Ion	Resp	Lower	Upper
109	45797		
109	100		
139	76.3	56.5	84.7
65	119.4	82.7	124.1

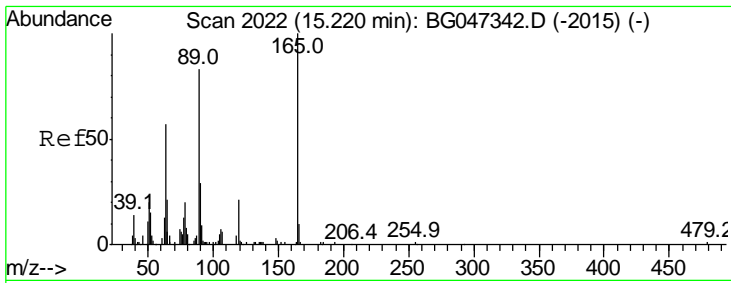


#56  
 Dibenzofuran  
 Concen: 20.300 ng/ul  
 RT: 15.28 min Scan# 2032  
 Delta R.T. -0.00 min  
 Lab File: BG047346.D  
 Acq: 18 Nov 2020 19:27

Tgt Ion	Resp	Lower	Upper
168	237328		
168	100		
139	43.7	33.2	49.8



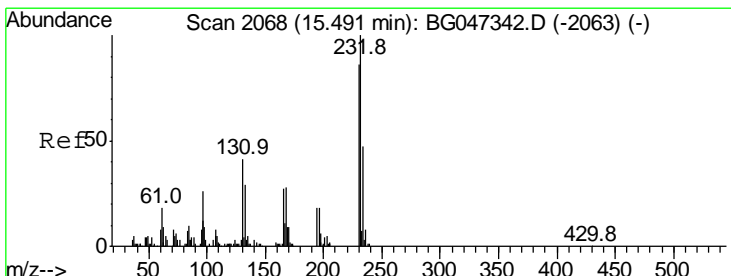
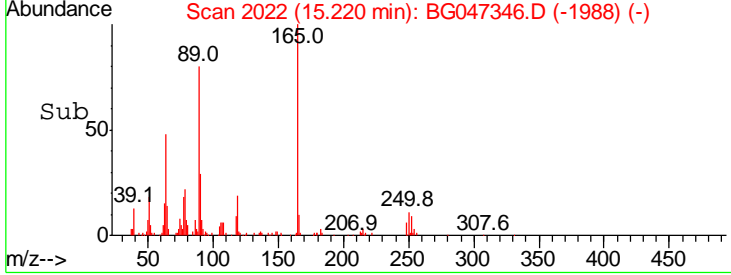
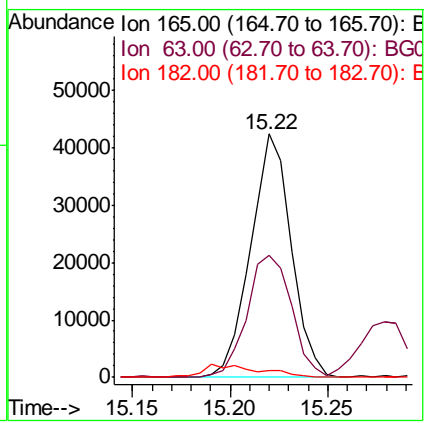
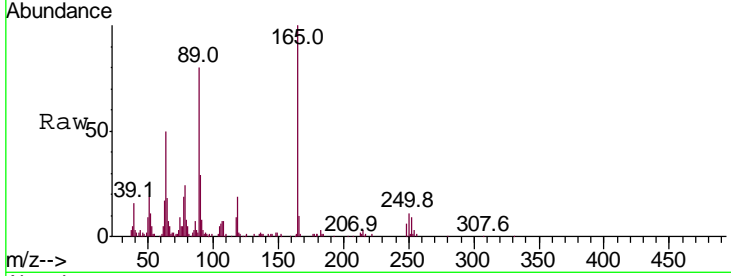




#57  
 2,4-Dinitrotoluene  
 Concen: 21.536 ng/ul  
 RT: 15.22 min Scan# 2022  
 Delta R.T. -0.00 min  
 Lab File: BG047346.D  
 Acq: 18 Nov 2020 19:27

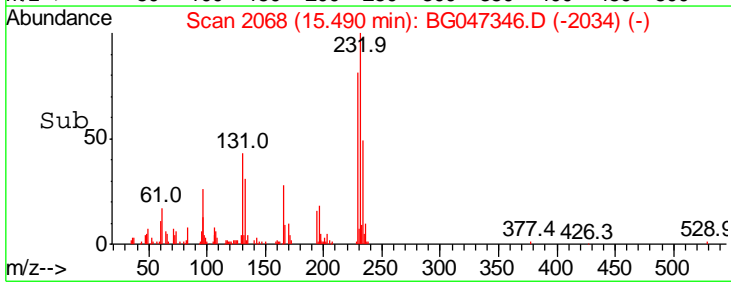
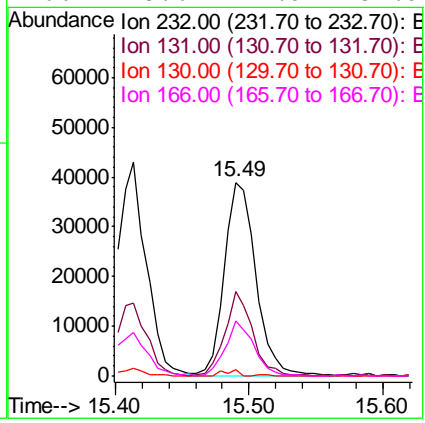
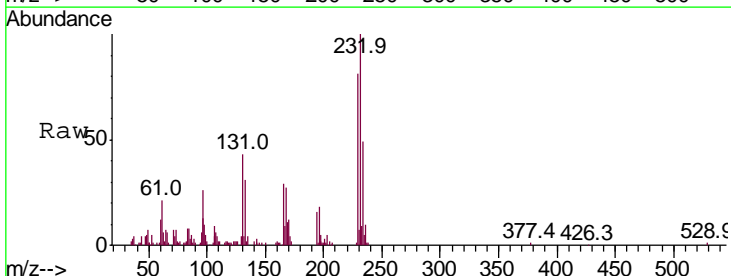
**Instrument :**  
 BNA\_G  
**ClientSampled :**  
 SICV008

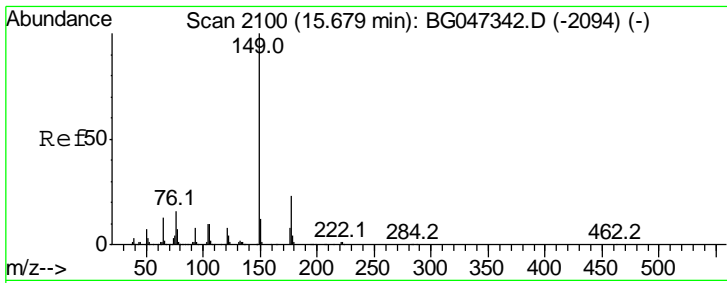
Tgt Ion	Resp	Lower	Upper
165	100		
63	50.3	46.2	69.4
182	2.8	2.2	3.2



#58  
 2,3,4,6-Tetrachlorophenol  
 Concen: 22.083 ng/ul  
 RT: 15.49 min Scan# 2068  
 Delta R.T. -0.00 min  
 Lab File: BG047346.D  
 Acq: 18 Nov 2020 19:27

Tgt Ion	Resp	Lower	Upper
232	100		
131	43.5	33.1	49.7
130	3.6	2.2	3.4#
166	28.6	21.9	32.9

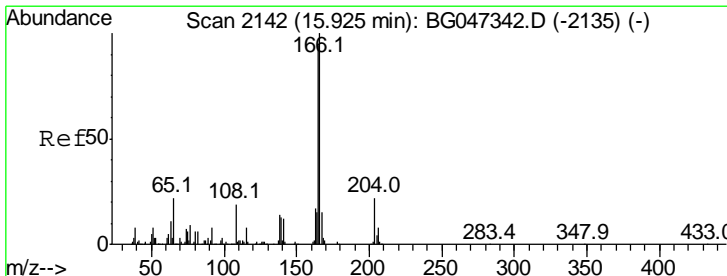
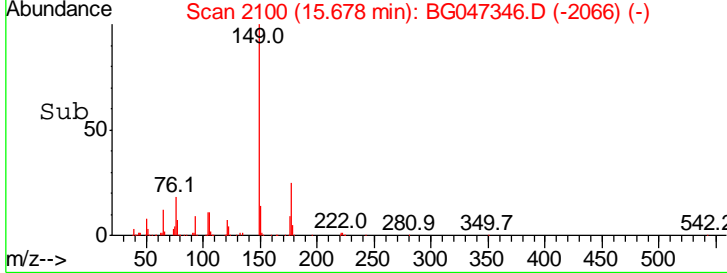
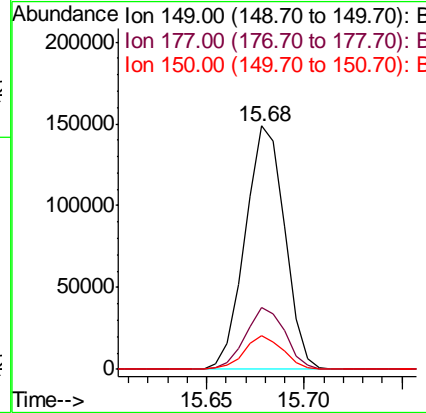
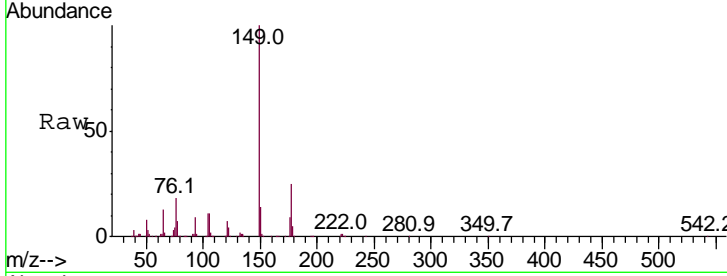




#59  
 Diethylphthalate  
 Concen: 19.180 ng/ul  
 RT: 15.68 min Scan# 2100  
 Delta R.T. -0.00 min  
 Lab File: BG047346.D  
 Acq: 18 Nov 2020 19:27

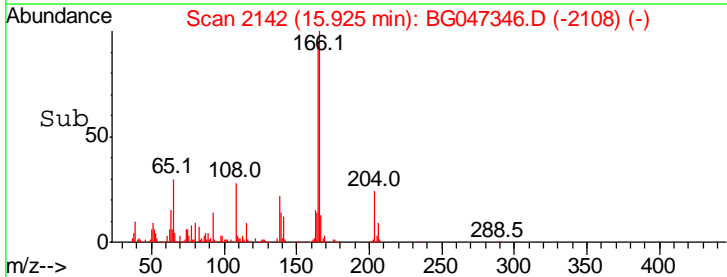
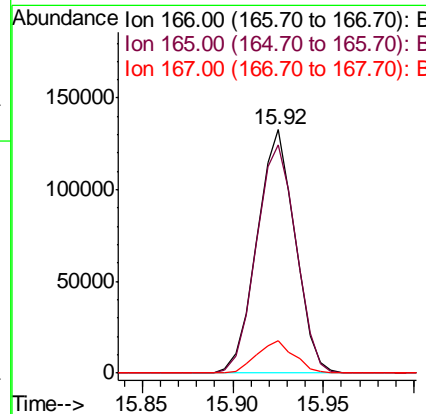
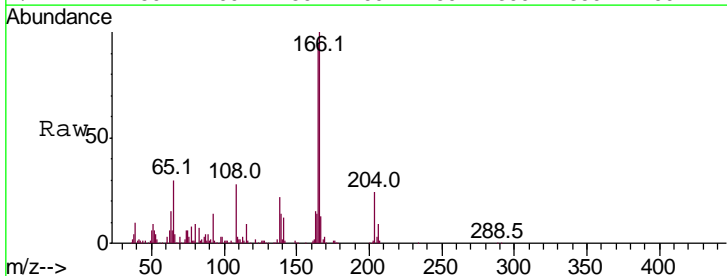
Instrument :  
 BNA\_G  
 ClientSampled :  
 SICV008

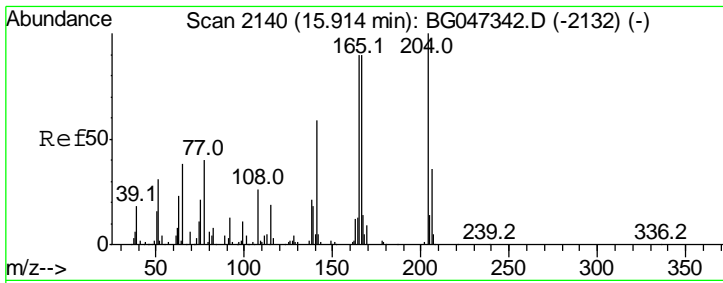
Tgt Ion	Resp	Lower	Upper
149	100		
177	25.4	18.4	27.6
150	13.8	9.4	14.2



#61  
 Fluorene  
 Concen: 19.331 ng/ul  
 RT: 15.92 min Scan# 2142  
 Delta R.T. -0.00 min  
 Lab File: BG047346.D  
 Acq: 18 Nov 2020 19:27

Tgt Ion	Resp	Lower	Upper
166	100		
165	93.9	75.5	113.3
167	13.1	11.8	17.8

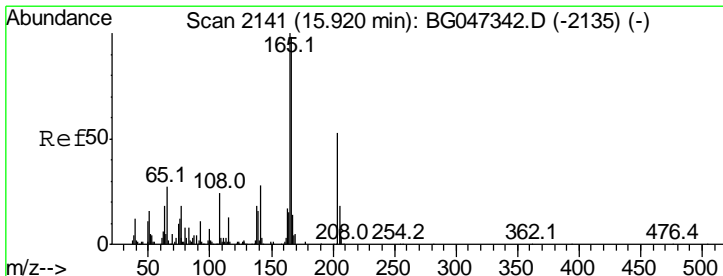
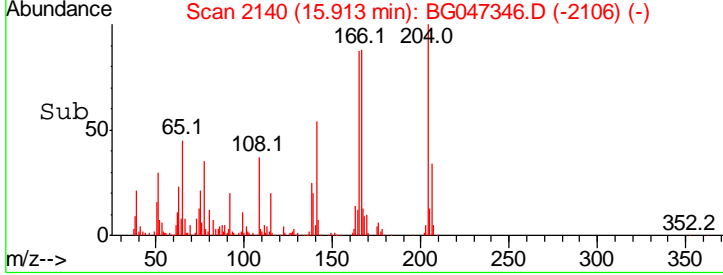
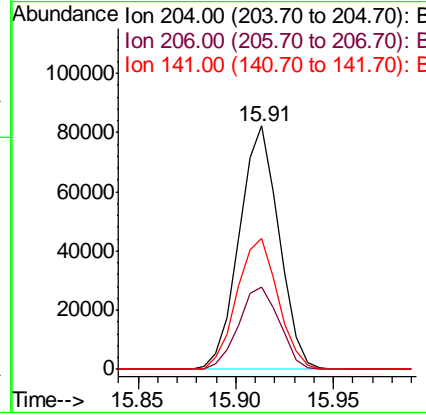
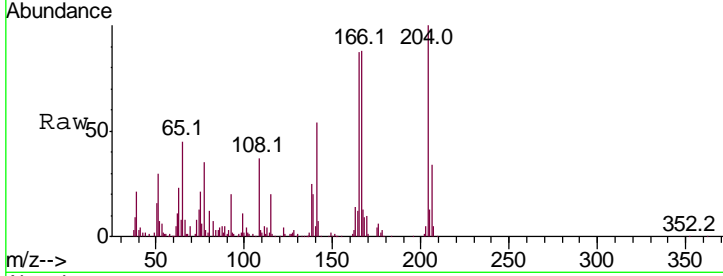




#62  
 4-Chlorophenyl-phenylether  
 Concen: 19.060 ng/ul  
 RT: 15.91 min Scan# 2140  
 Delta R.T. -0.00 min  
 Lab File: BG047346.D  
 Acq: 18 Nov 2020 19:27

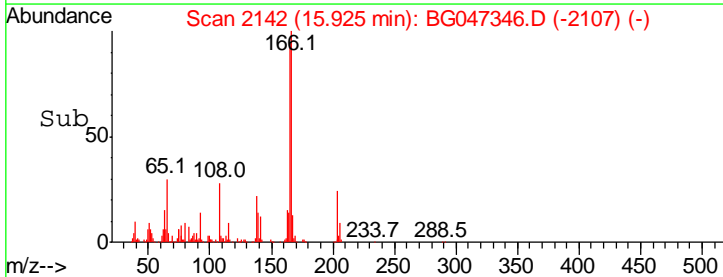
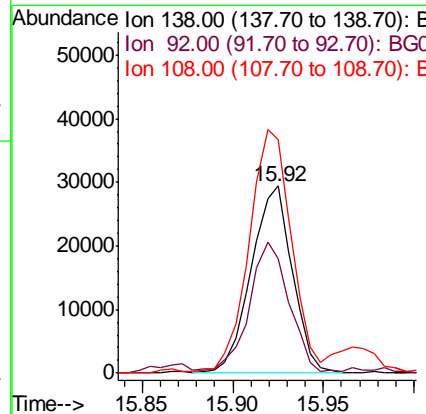
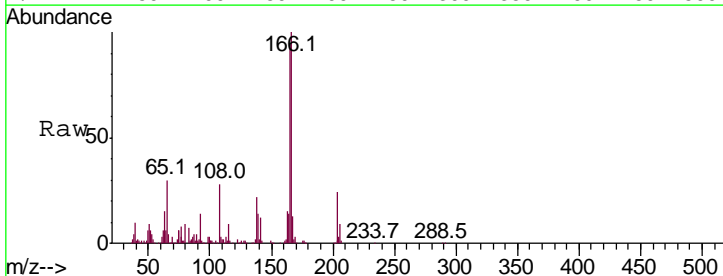
Instrument :  
 BNA\_G  
 ClientSampled :  
 SICV008

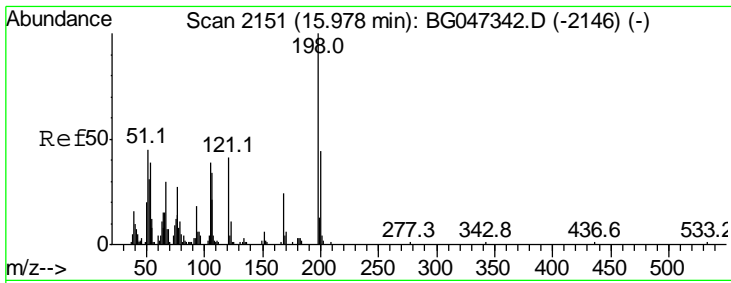
Tgt Ion	Resp	Lower	Upper
204	115720		
206	33.6	28.4	42.6
141	54.1	47.0	70.4



#63  
 4-Nitroaniline  
 Concen: 27.826 ng/ul  
 RT: 15.92 min Scan# 2142  
 Delta R.T. 0.01 min  
 Lab File: BG047346.D  
 Acq: 18 Nov 2020 19:27

Tgt Ion	Resp	Lower	Upper
138	46389		
92	61.2	52.6	78.8
108	124.8	110.8	166.2

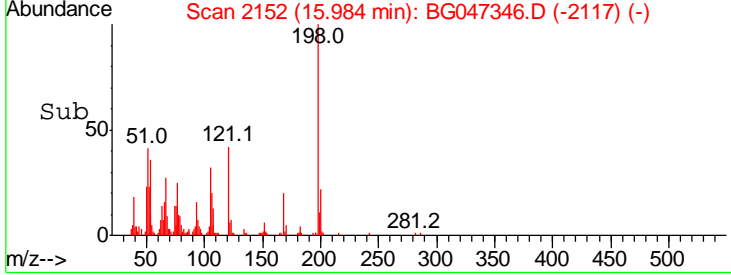
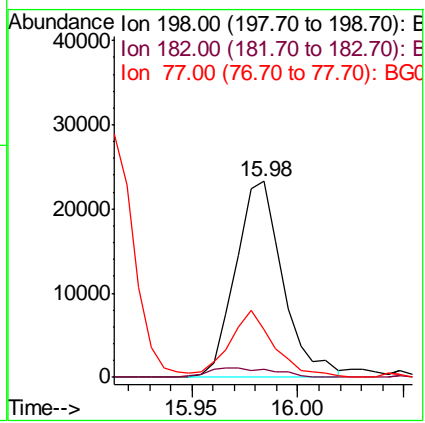
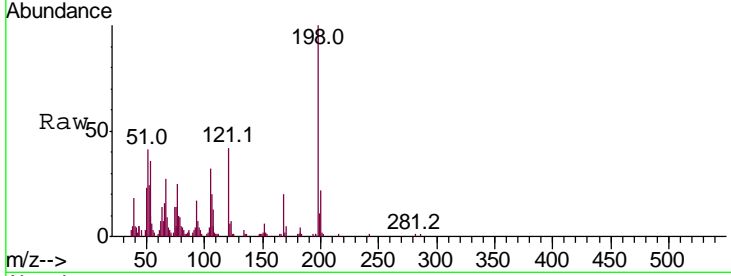




#66  
 4,6-Dinitro-2-methylphenol  
 Concen: 20.077 ng/ul  
 RT: 15.98 min Scan# 2152  
 Delta R.T. 0.01 min  
 Lab File: BG047346.D  
 Acq: 18 Nov 2020 19:27

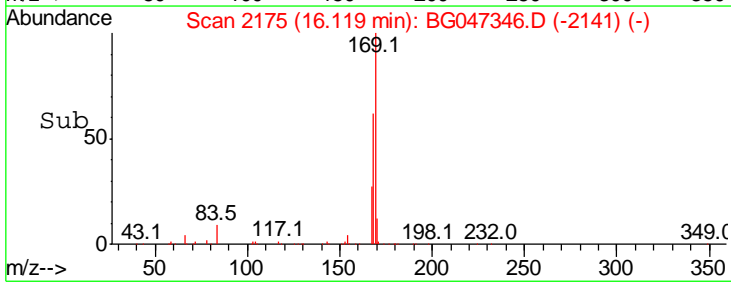
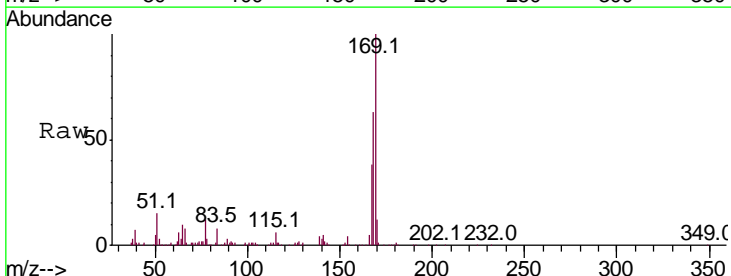
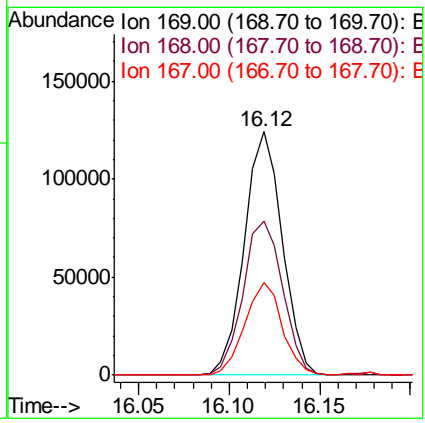
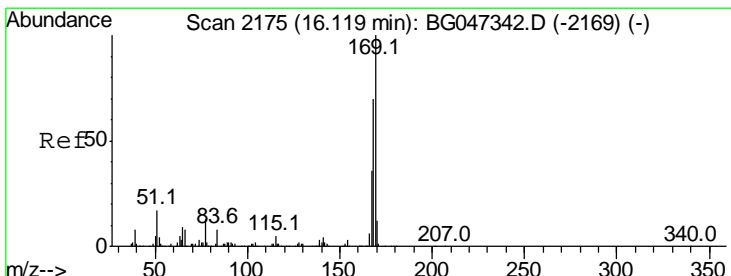
**Instrument :**  
 BNA\_G  
**ClientSampled :**  
 SICV008

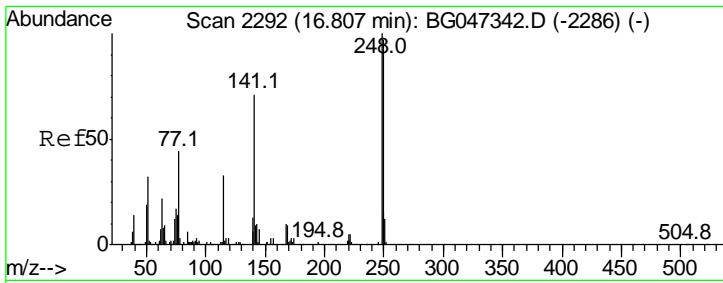
Tgt Ion	Resp	Lower	Upper
198	100		
182	4.2	2.6	3.8#
77	24.7	22.9	34.3



#67  
 N-Nitrosodiphenylamine  
 Concen: 19.750 ng/ul  
 RT: 16.12 min Scan# 2175  
 Delta R.T. -0.00 min  
 Lab File: BG047346.D  
 Acq: 18 Nov 2020 19:27

Tgt Ion	Resp	Lower	Upper
169	100		
168	63.2	55.8	83.8
167	37.8	28.5	42.7

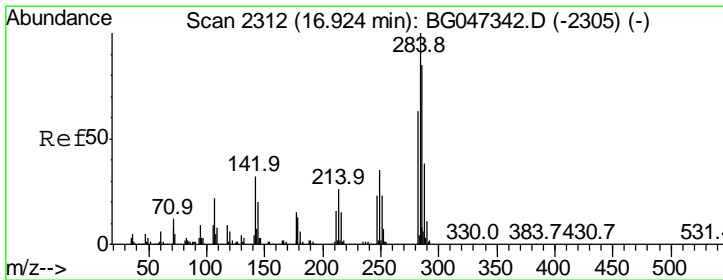
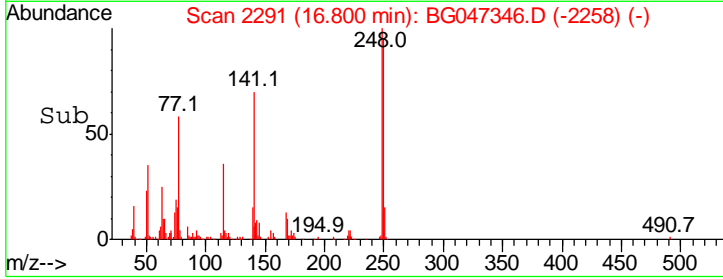
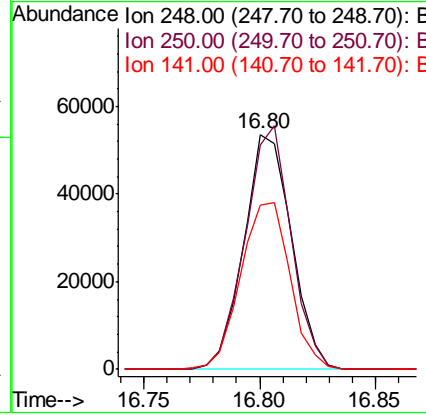
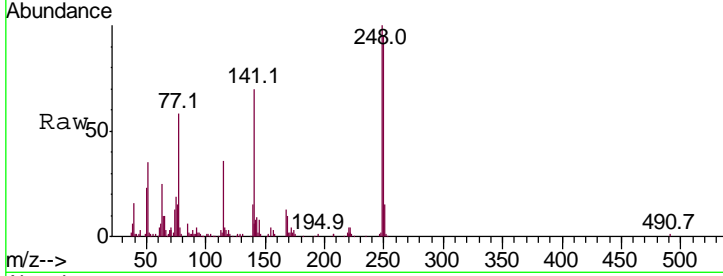




#68  
 4-Bromophenyl-phenylether  
 Concen: 19.133 ng/ul  
 RT: 16.80 min Scan# 2291  
 Delta R.T. -0.01 min  
 Lab File: BG047346.D  
 Acq: 18 Nov 2020 19:27

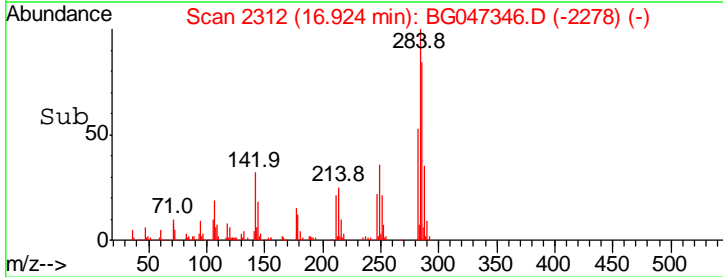
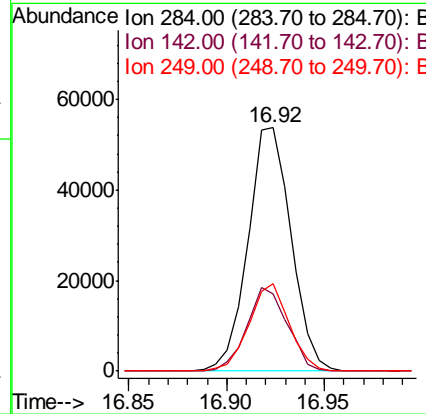
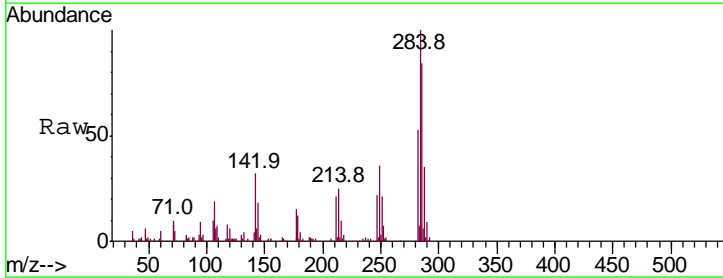
Instrument :  
 BNA\_G  
 ClientSampled :  
 SICV008

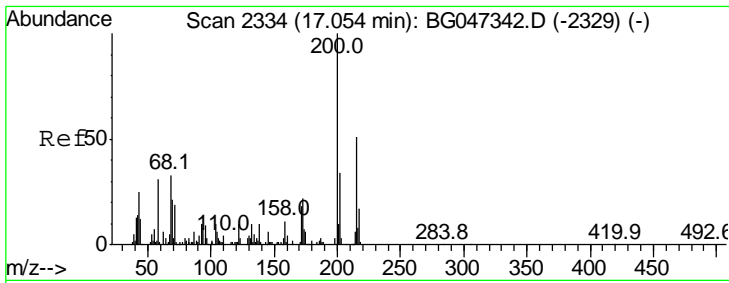
Tgt Ion	Resp	Lower	Upper
248	100		
250	95.3	77.8	116.6
141	69.6	57.0	85.4



#69  
 Hexachlorobenzene  
 Concen: 19.068 ng/ul  
 RT: 16.92 min Scan# 2312  
 Delta R.T. -0.00 min  
 Lab File: BG047346.D  
 Acq: 18 Nov 2020 19:27

Tgt Ion	Resp	Lower	Upper
284	100		
142	31.6	25.5	38.3
249	35.8	29.5	44.3

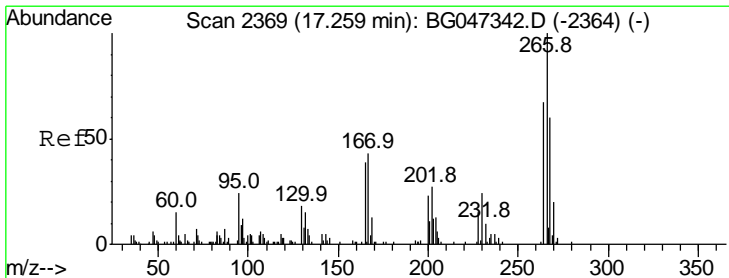
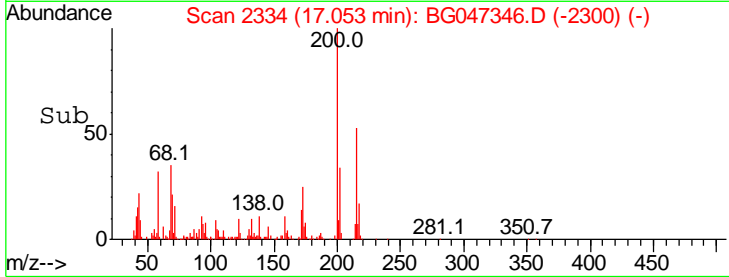
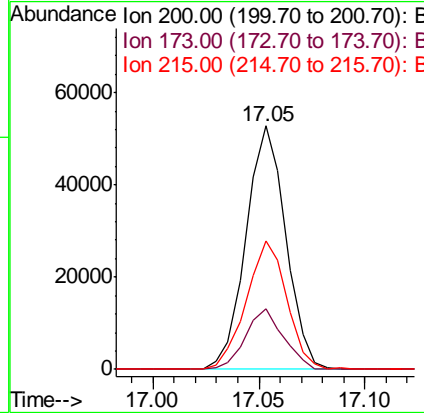
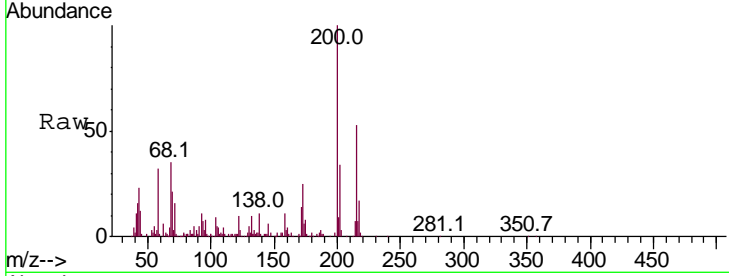




#70  
 Atrazine  
 Concen: 16.943 ng/ul  
 RT: 17.05 min Scan# 2334  
 Delta R.T. -0.00 min  
 Lab File: BG047346.D  
 Acq: 18 Nov 2020 19:27

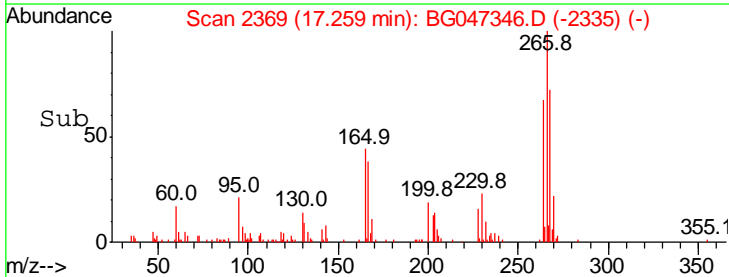
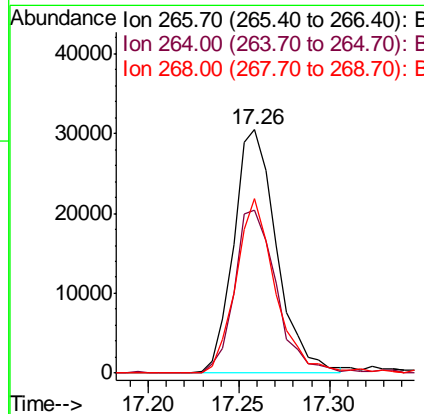
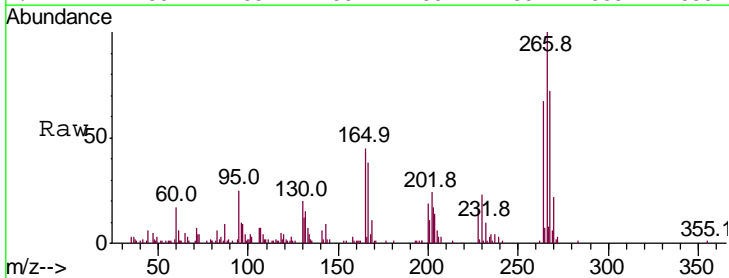
Instrument :  
 BNA\_G  
 ClientSampled :  
 SICV008

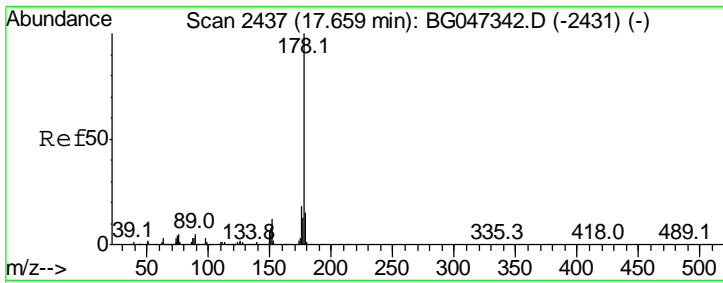
Tgt Ion	Resp	Lower	Upper
200	100		
173	25.0	18.0	27.0
215	52.9	40.6	61.0



#71  
 Pentachlorophenol  
 Concen: 21.567 ng/ul  
 RT: 17.26 min Scan# 2369  
 Delta R.T. -0.00 min  
 Lab File: BG047346.D  
 Acq: 18 Nov 2020 19:27

Tgt Ion	Resp	Lower	Upper
266	100		
264	67.0	53.6	80.4
268	71.7	51.4	77.0

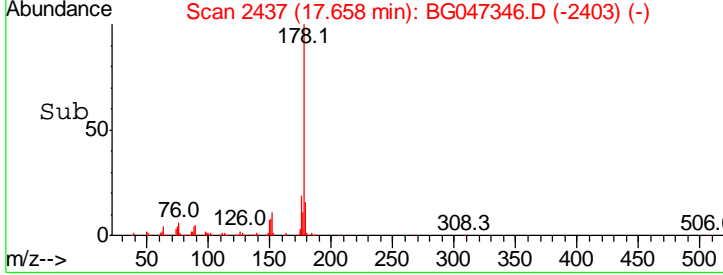
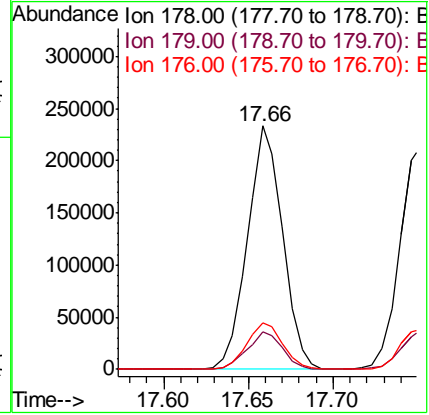
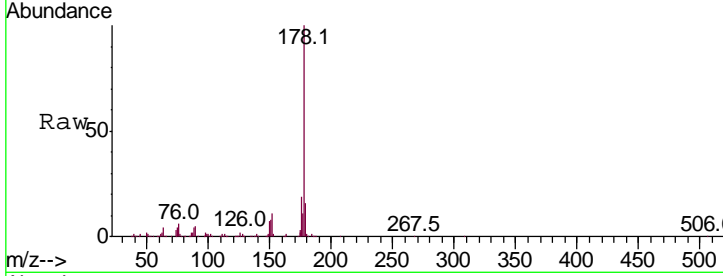




#72  
 Phenanthrene  
 Concen: 19.655 ng/ul  
 RT: 17.66 min Scan# 2437  
 Delta R.T. -0.00 min  
 Lab File: BG047346.D  
 Acq: 18 Nov 2020 19:27

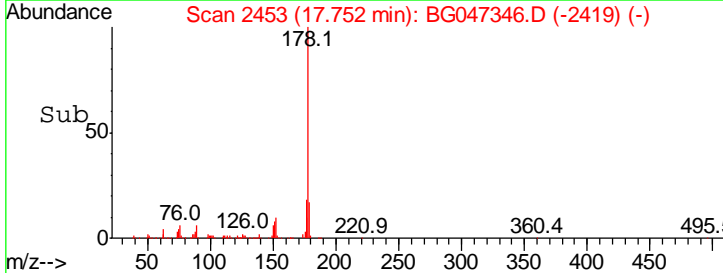
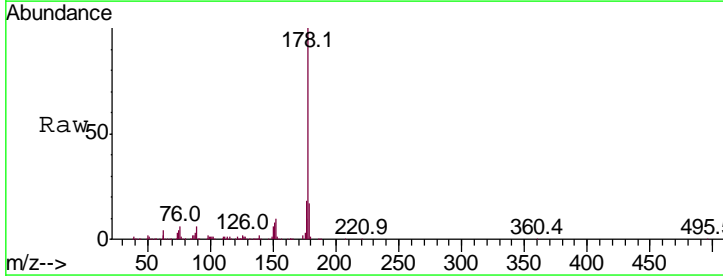
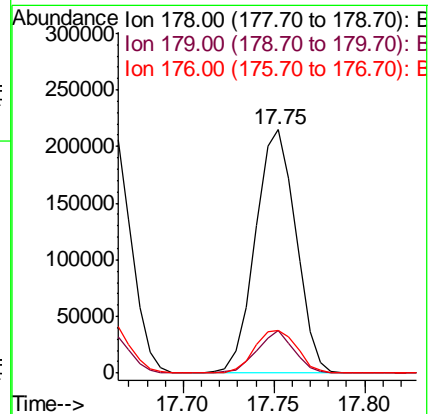
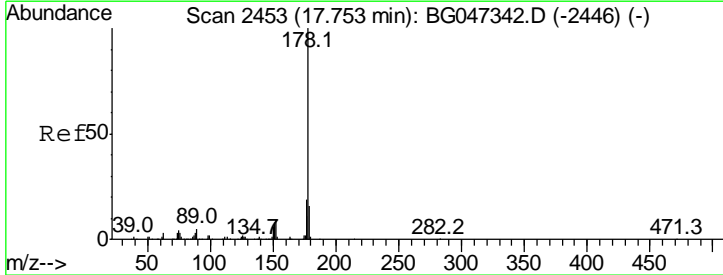
Instrument :  
 BNA\_G  
 ClientSampleID :  
 SICV008

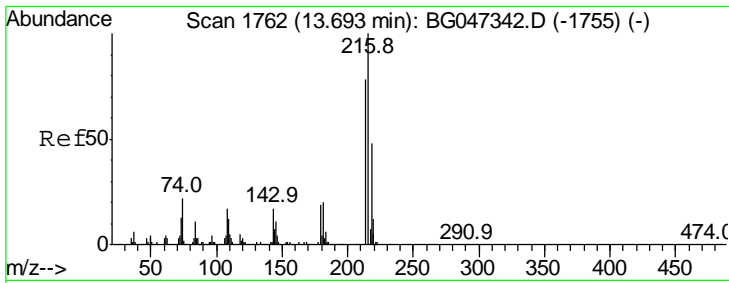
Tgt Ion	Resp	Lower	Upper
178	100		
179	15.6	12.3	18.5
176	19.2	14.4	21.6



#74  
 Anthracene  
 Concen: 19.228 ng/ul  
 RT: 17.75 min Scan# 2453  
 Delta R.T. -0.00 min  
 Lab File: BG047346.D  
 Acq: 18 Nov 2020 19:27

Tgt Ion	Resp	Lower	Upper
178	100		
179	17.4	12.5	18.7
176	17.6	15.4	23.0

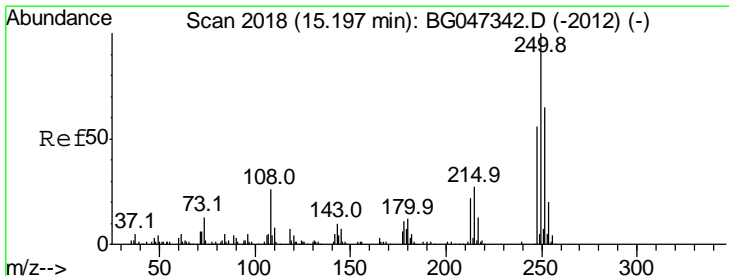
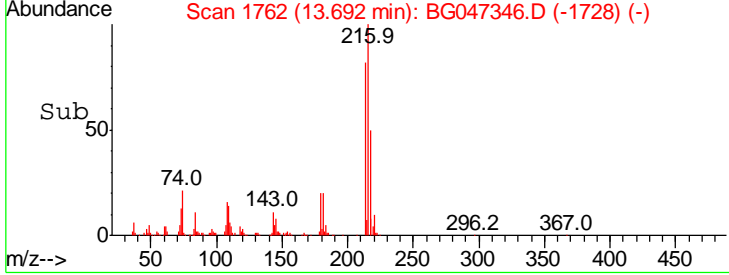
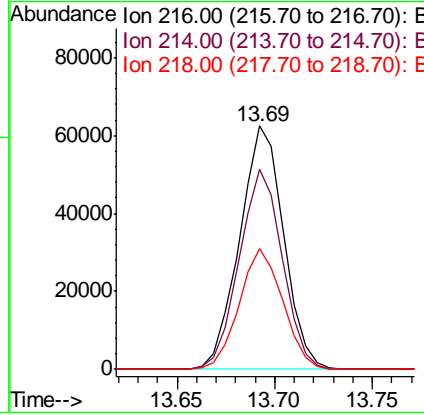
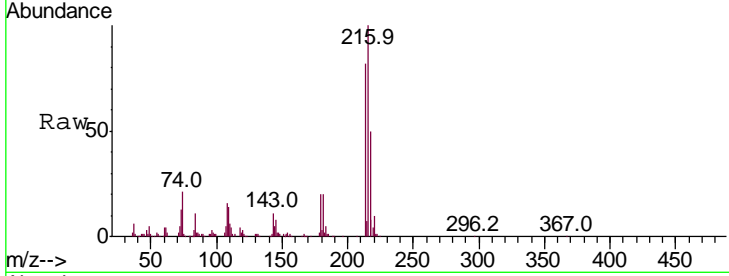




#75  
 1,2,3,4-Tetrachlorobenzene  
 Concen: 19.270 ng/uL  
 RT: 13.69 min Scan# 1762  
 Delta R.T. -0.00 min  
 Lab File: BG047346.D  
 Acq: 18 Nov 2020 19:27

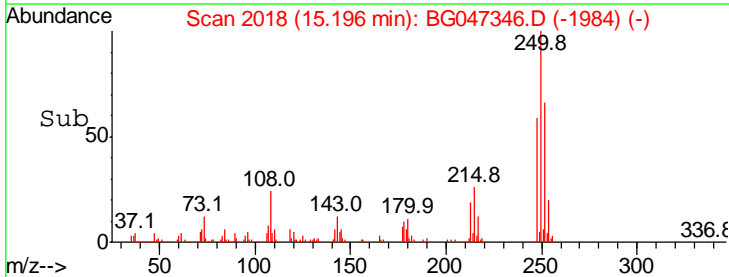
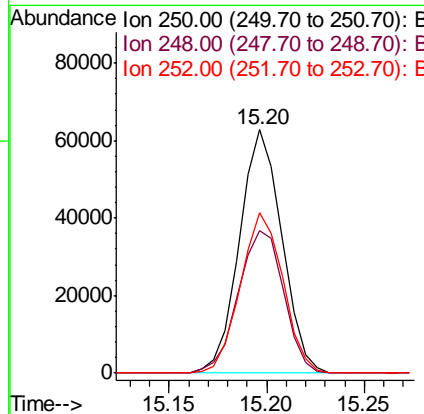
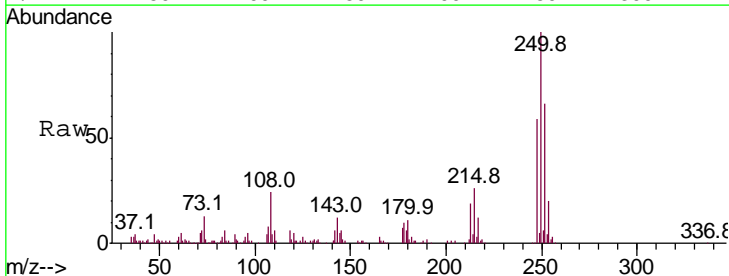
Instrument :  
 BNA\_G  
 ClientSampled :  
 SICV008

Tgt Ion	Resp	Lower	Upper
216	100		
214	82.1	62.6	94.0
218	49.5	38.1	57.1

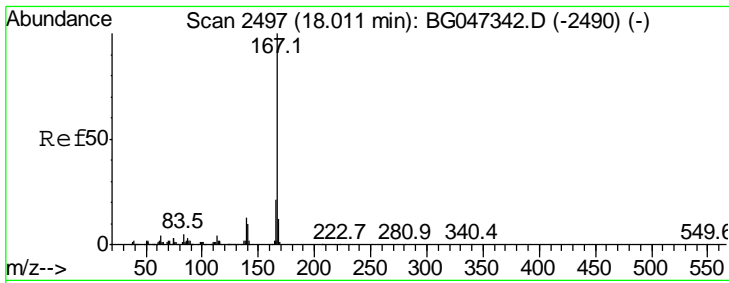


#76  
 Pentachlorobenzene  
 Concen: 18.966 ng/uL  
 RT: 15.20 min Scan# 2018  
 Delta R.T. -0.00 min  
 Lab File: BG047346.D  
 Acq: 18 Nov 2020 19:27

Tgt Ion	Resp	Lower	Upper
250	100		
248	58.7	44.5	66.7
252	65.8	51.8	77.6



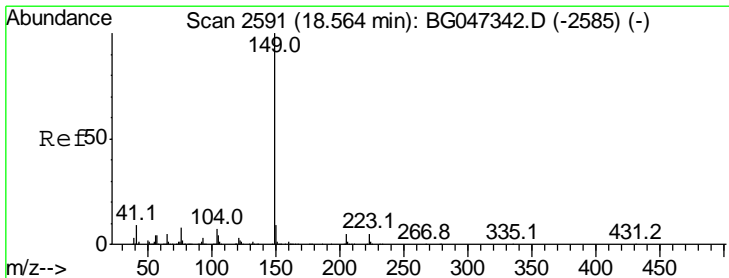
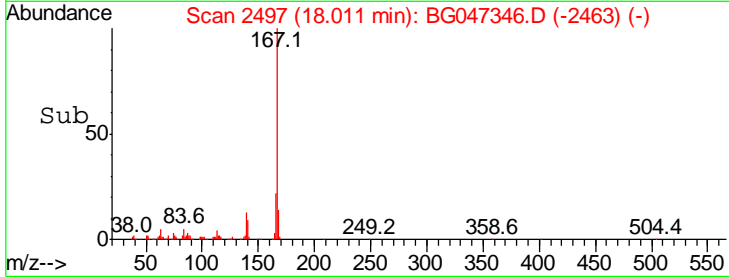
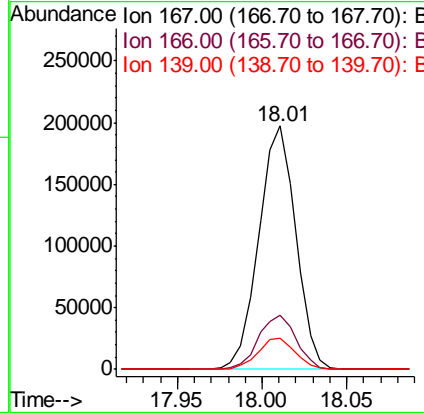
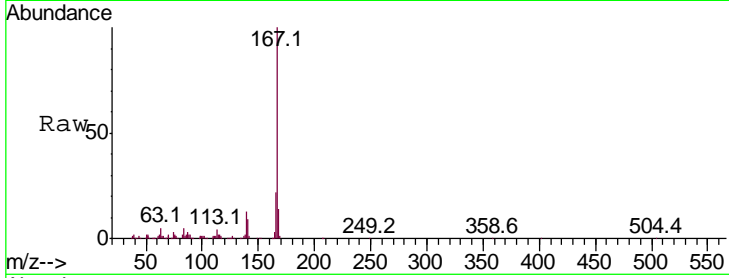




#77  
 Carbazole  
 Concen: 21.319 ng/ul  
 RT: 18.01 min Scan# 2497  
 Delta R.T. -0.00 min  
 Lab File: BG047346.D  
 Acq: 18 Nov 2020 19:27

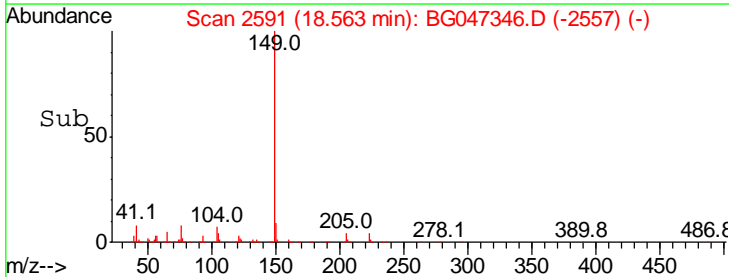
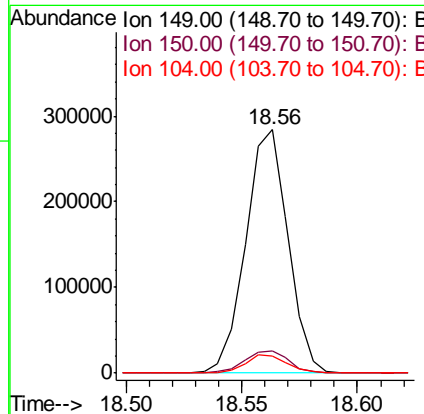
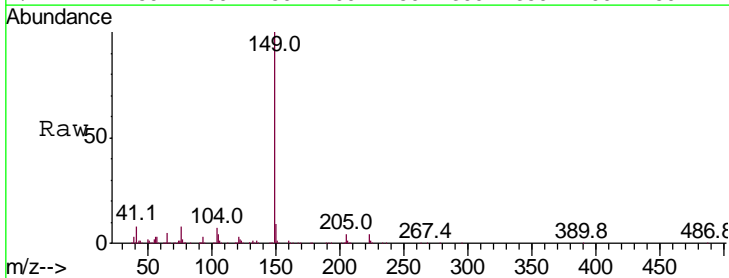
Instrument :  
 BNA\_G  
 ClientSampleID :  
 SICV008

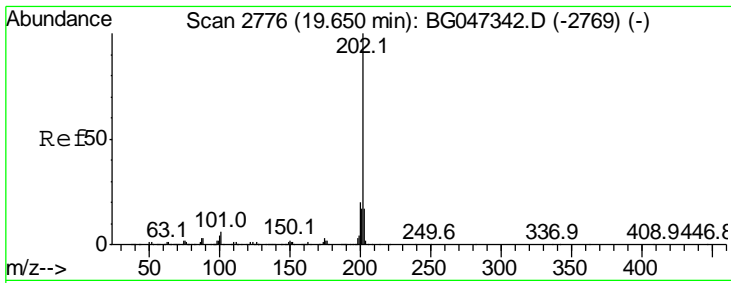
Tgt Ion	Resp	Lower	Upper
167	100		
166	22.4	17.0	25.6
139	12.9	10.2	15.2



#78  
 Di-n-butylphthalate  
 Concen: 19.817 ng/ul  
 RT: 18.56 min Scan# 2591  
 Delta R.T. -0.00 min  
 Lab File: BG047346.D  
 Acq: 18 Nov 2020 19:27

Tgt Ion	Resp	Lower	Upper
149	100		
150	9.2	7.1	10.7
104	6.9	5.8	8.8

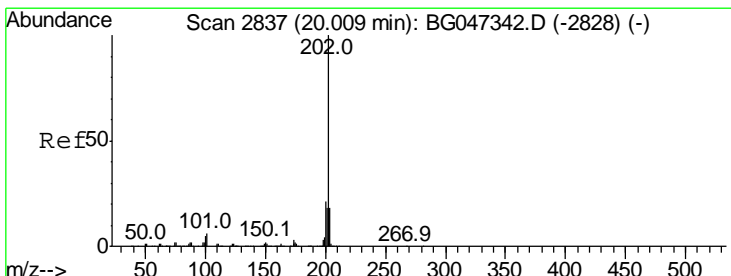
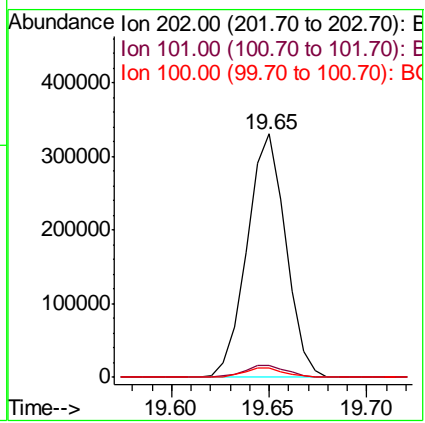
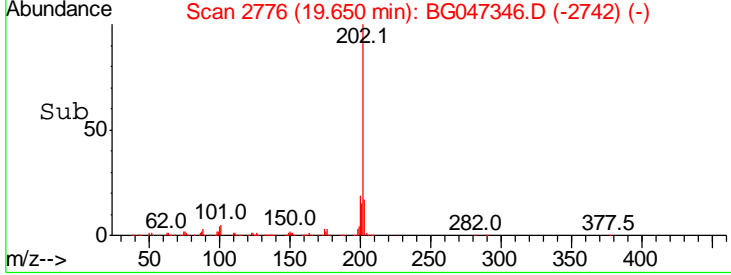
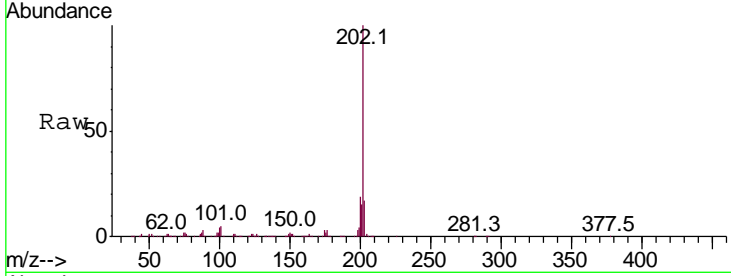




#80  
 Fluoranthene  
 Concen: 19.951 ng/ul  
 RT: 19.65 min Scan# 2776  
 Delta R.T. -0.00 min  
 Lab File: BG047346.D  
 Acq: 18 Nov 2020 19:27

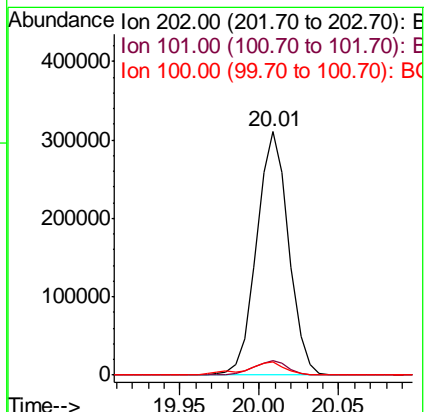
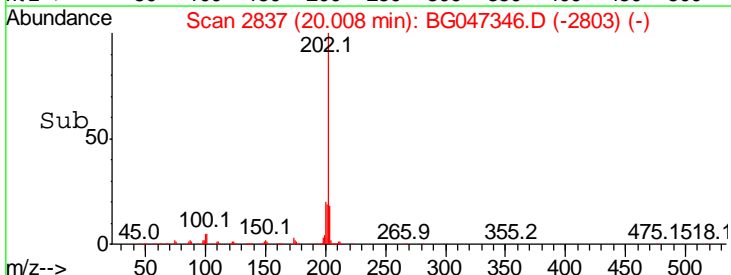
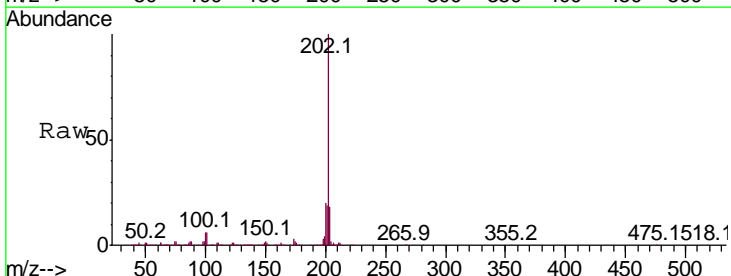
Instrument :  
 BNA\_G  
 ClientSampled :  
 SICV008

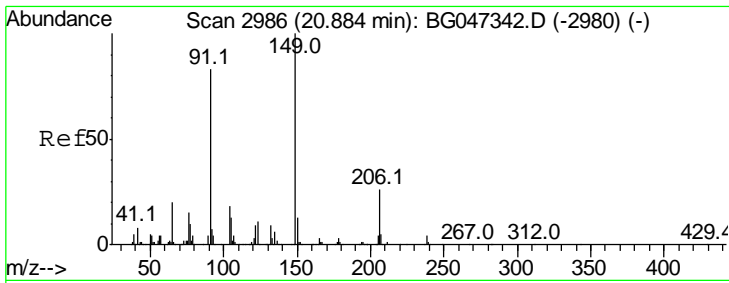
Tgt Ion	Ratio	Lower	Upper
202	100		
101	5.1	4.7	7.1
100	4.1	3.0	4.6



#82  
 Pyrene  
 Concen: 19.375 ng/ul  
 RT: 20.01 min Scan# 2837  
 Delta R.T. -0.00 min  
 Lab File: BG047346.D  
 Acq: 18 Nov 2020 19:27

Tgt Ion	Ratio	Lower	Upper
202	100		
101	5.9	4.8	7.2
100	5.5	4.2	6.2

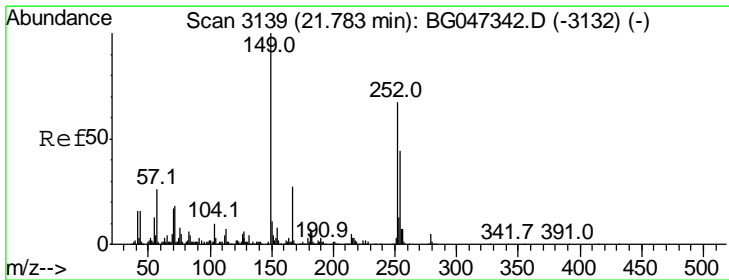
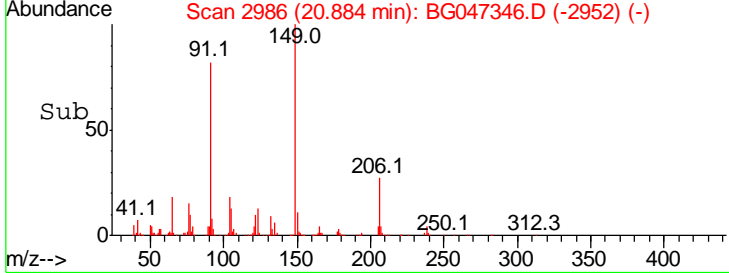
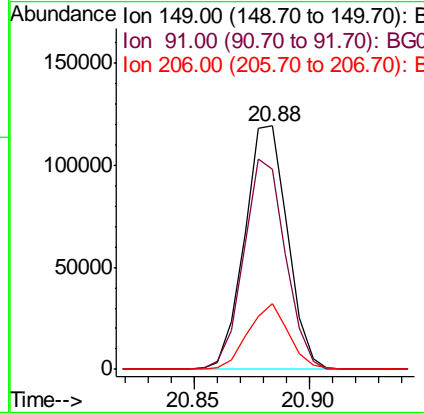
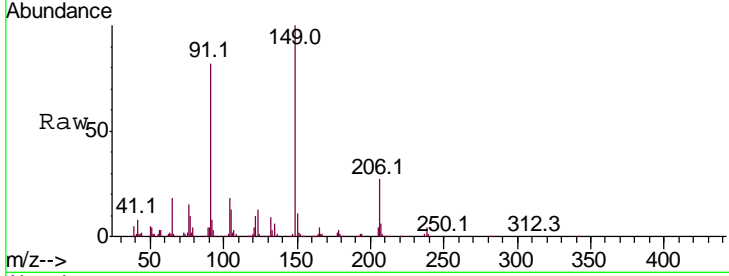




#83  
 Butylbenzylphthalate  
 Concen: 19.568 ng/ul  
 RT: 20.88 min Scan# 2986  
 Delta R.T. -0.00 min  
 Lab File: BG047346.D  
 Acq: 18 Nov 2020 19:27

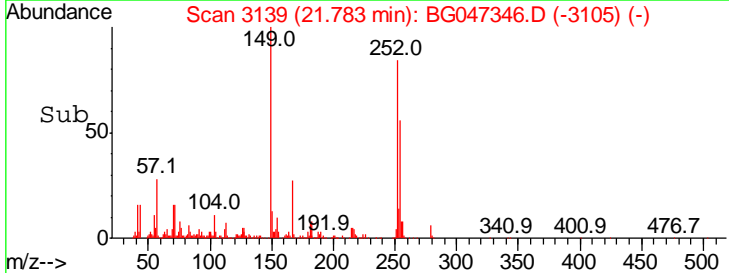
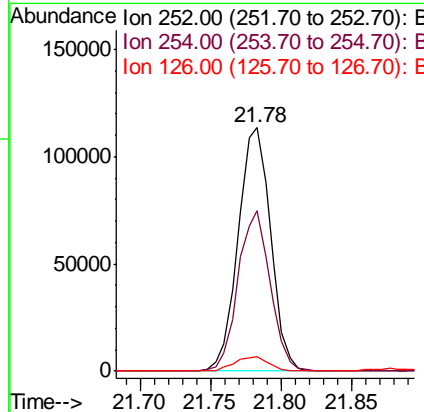
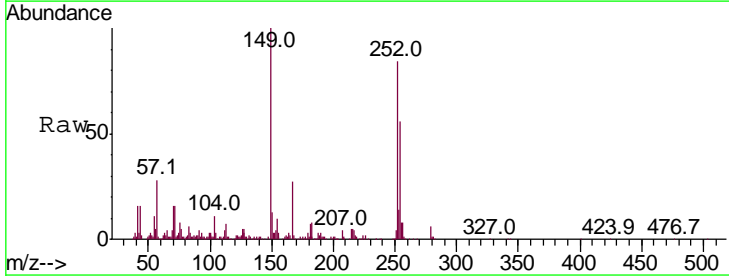
Instrument :  
 BNA\_G  
 ClientSampled :  
 SICV008

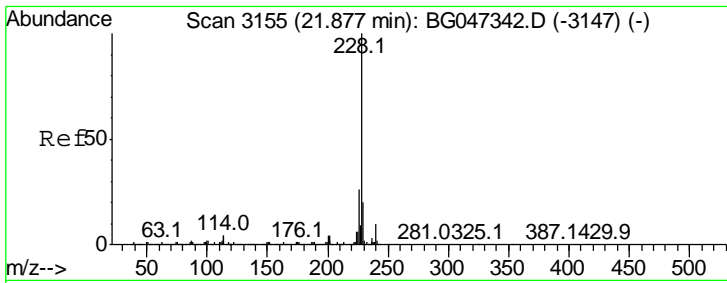
Tgt Ion	Resp	Lower	Upper
149	100		
91	82.4	66.4	99.6
206	26.8	20.9	31.3



#84  
 3,3'-Dichlorobenzidine  
 Concen: 22.695 ng/ul  
 RT: 21.78 min Scan# 3139  
 Delta R.T. -0.00 min  
 Lab File: BG047346.D  
 Acq: 18 Nov 2020 19:27

Tgt Ion	Resp	Lower	Upper
252	100		
254	66.0	53.2	79.8
126	6.1	5.4	8.2

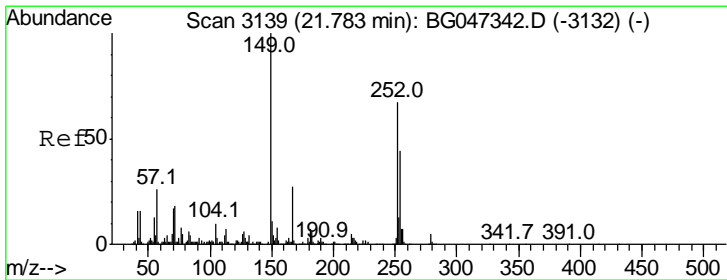
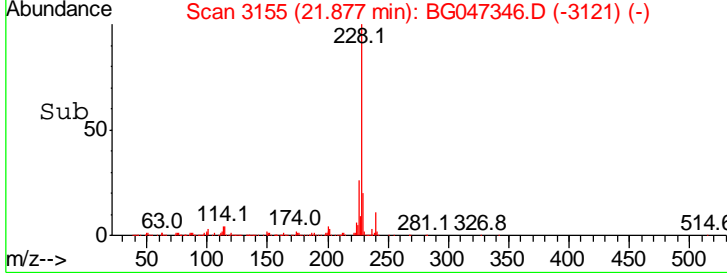
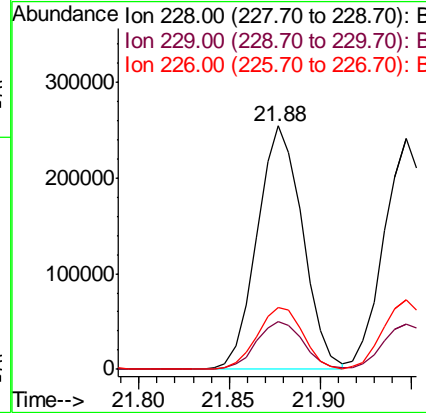
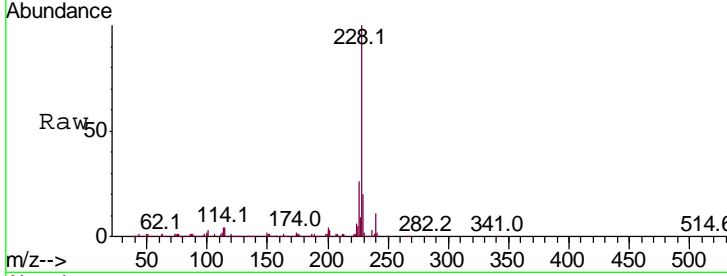




#85  
 Benzo(a)anthracene  
 Concen: 19.812 ng/ul  
 RT: 21.88 min Scan# 3155  
 Delta R.T. -0.00 min  
 Lab File: BG047346.D  
 Acq: 18 Nov 2020 19:27

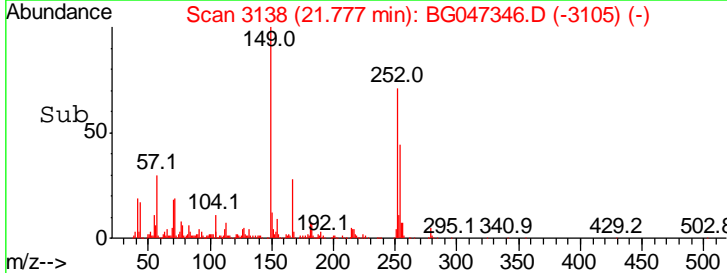
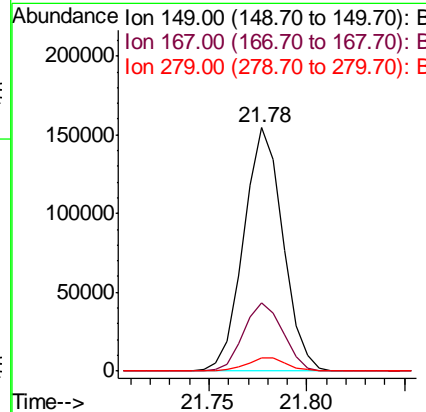
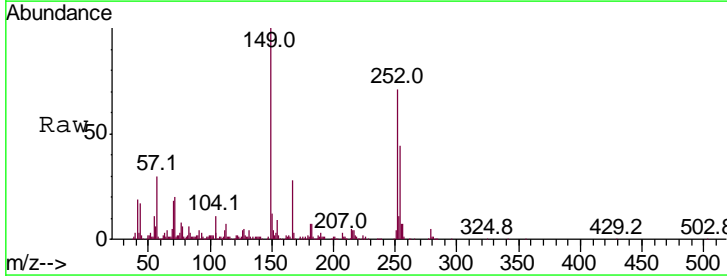
Instrument :  
 BNA\_G  
 ClientSampled :  
 SICV008

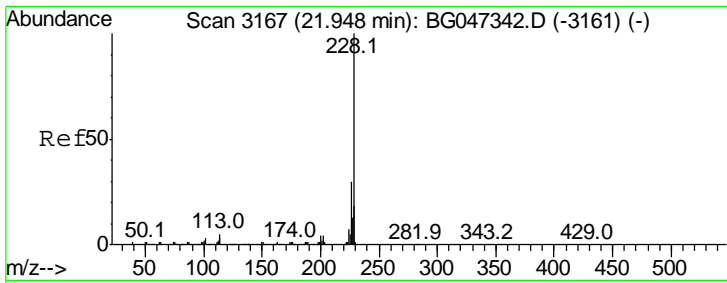
Tgt Ion	Resp	Lower	Upper
228	441582		
229	19.6	15.6	23.4
226	25.6	20.7	31.1



#86  
 Bis(2-ethylhexyl)phthalate  
 Concen: 19.504 ng/ul  
 RT: 21.78 min Scan# 3138  
 Delta R.T. -0.01 min  
 Lab File: BG047346.D  
 Acq: 18 Nov 2020 19:27

Tgt Ion	Resp	Lower	Upper
149	215507		
167	28.0	21.8	32.8
279	5.4	4.3	6.5

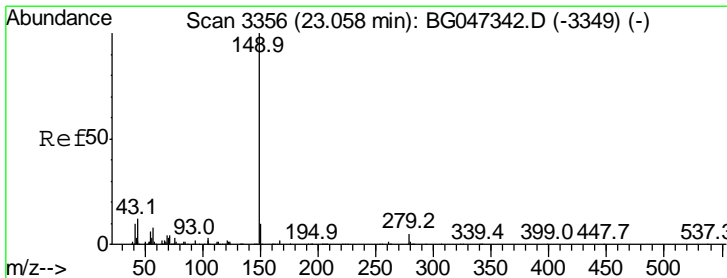
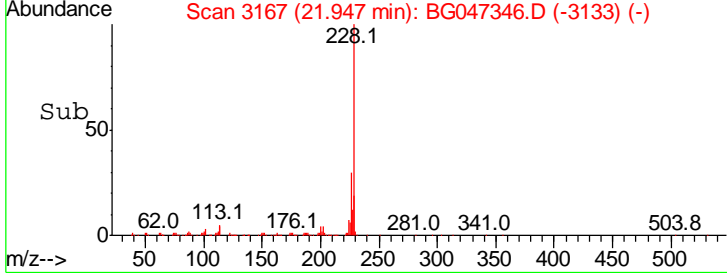
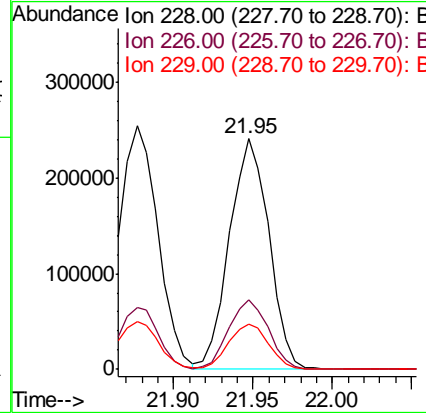
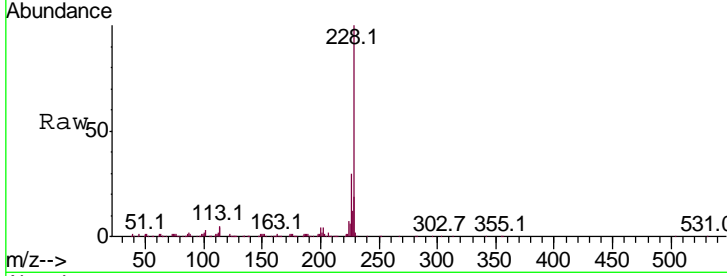




#87  
 Chrysene  
 Concen: 19.392 ng/ul  
 RT: 21.95 min Scan# 3167  
 Delta R.T. -0.00 min  
 Lab File: BG047346.D  
 Acq: 18 Nov 2020 19:27

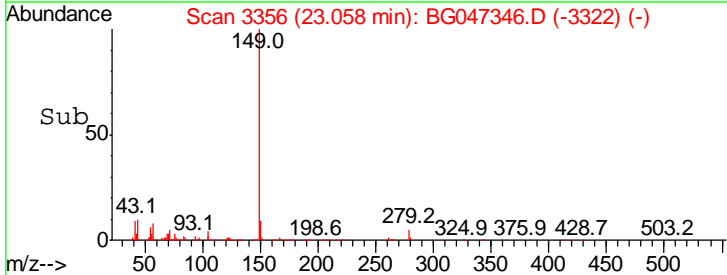
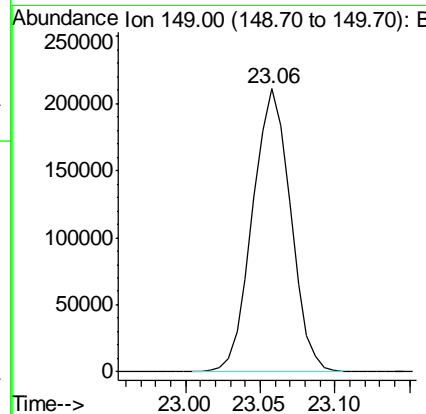
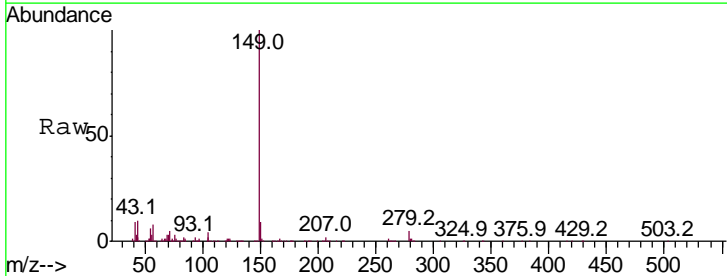
Instrument :  
 BNA\_G  
 ClientSampled :  
 SICV008

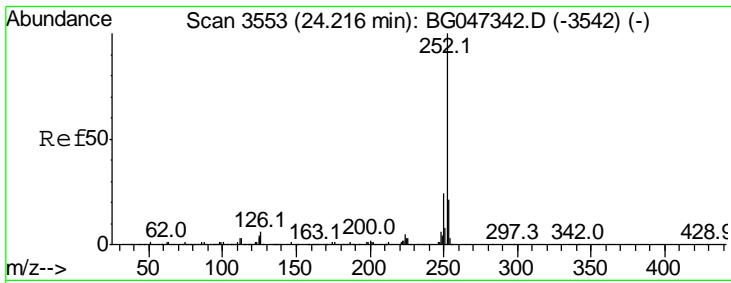
Tgt Ion	Resp	Lower	Upper
228	100		
226	30.3	23.4	35.2
229	19.4	14.7	22.1



#89  
 Di-n-octyl phthalate  
 Concen: 20.549 ng/ul  
 RT: 23.06 min Scan# 3356  
 Delta R.T. -0.00 min  
 Lab File: BG047346.D  
 Acq: 18 Nov 2020 19:27

Tgt Ion:149 Resp: 371849

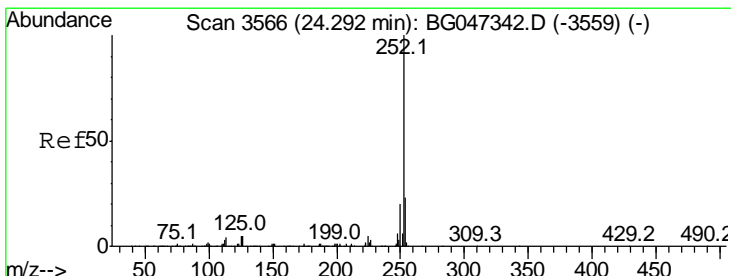
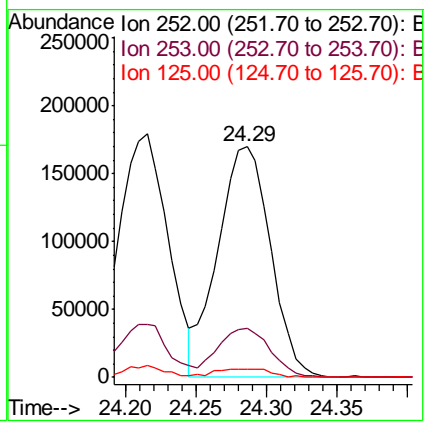
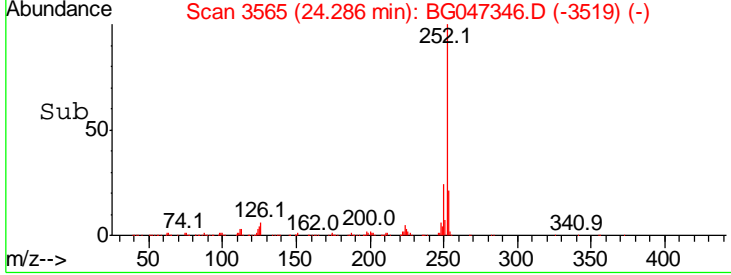
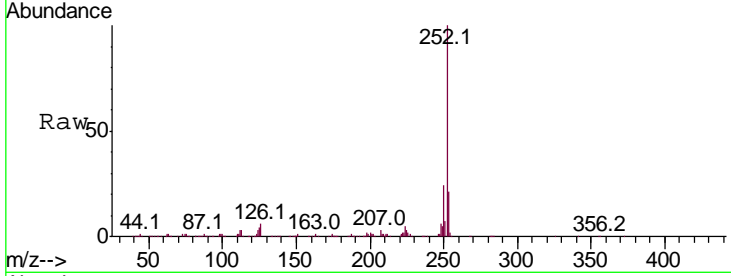




#90  
 Benzo(b)fluoranthene  
 Concen: 19.456 ng/ul  
 RT: 24.29 min Scan# 3565  
 Delta R.T. 0.07 min  
 Lab File: BG047346.D  
 Acq: 18 Nov 2020 19:27

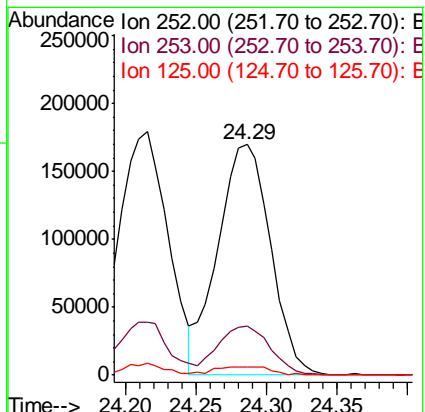
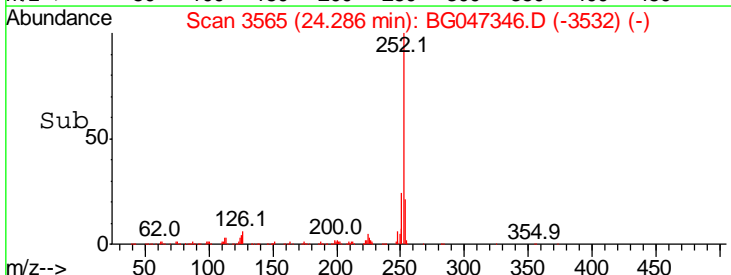
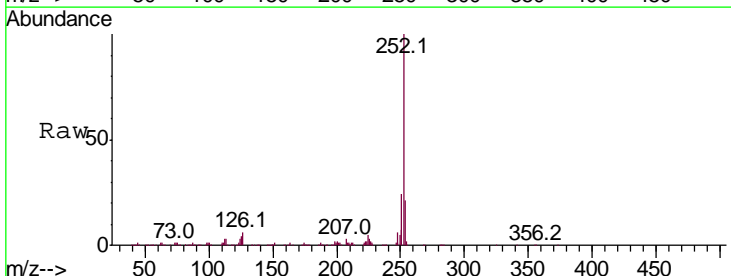
**Instrument :**  
 BNA\_G  
**ClientSampled :**  
 SICV008

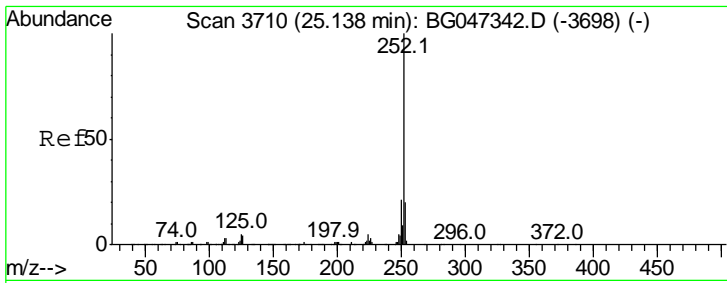
Tgt Ion	Resp	Lower	Upper
252	100		
253	21.3	16.6	25.0
125	3.6	3.1	4.7



#91  
 Benzo(k)fluoranthene  
 Concen: 20.250 ng/ul  
 RT: 24.29 min Scan# 3565  
 Delta R.T. -0.01 min  
 Lab File: BG047346.D  
 Acq: 18 Nov 2020 19:27

Tgt Ion	Resp	Lower	Upper
252	100		
253	21.3	18.0	27.0
125	3.6	3.3	4.9

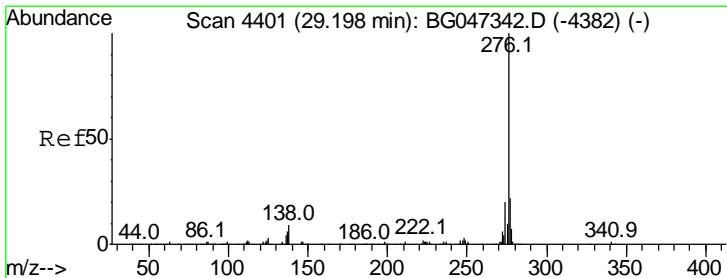
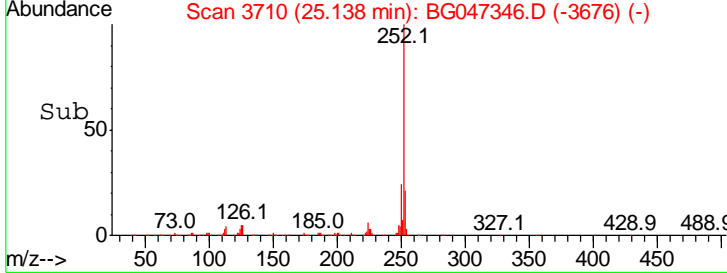
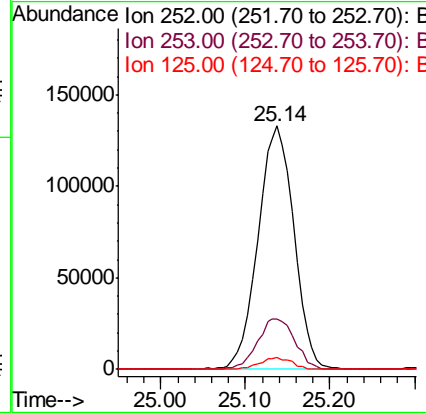
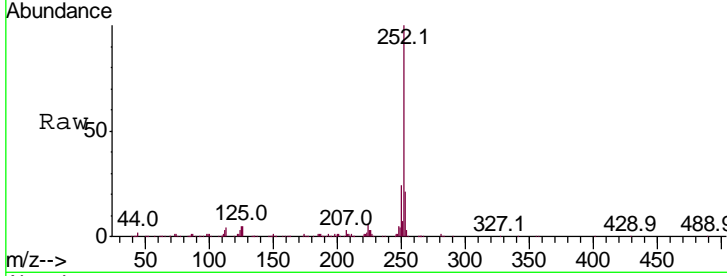




#93  
 Benzo(a)pyrene  
 Concen: 19.442 ng/ul  
 RT: 25.14 min Scan# 3710  
 Delta R.T. -0.00 min  
 Lab File: BG047346.D  
 Acq: 18 Nov 2020 19:27

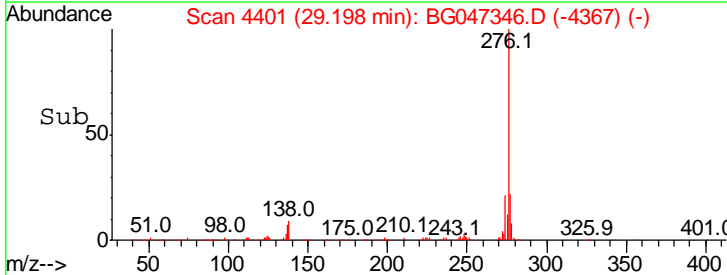
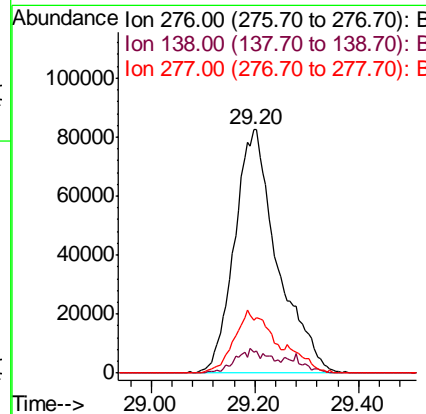
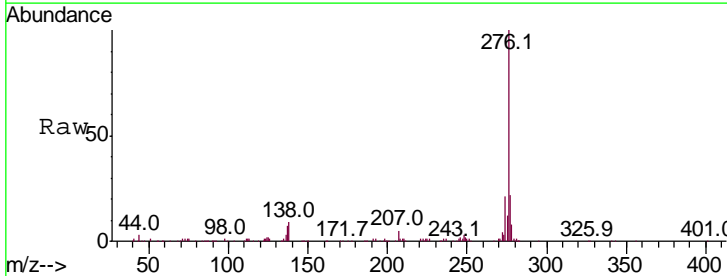
Instrument :  
 BNA\_G  
 ClientSampled :  
 SICV008

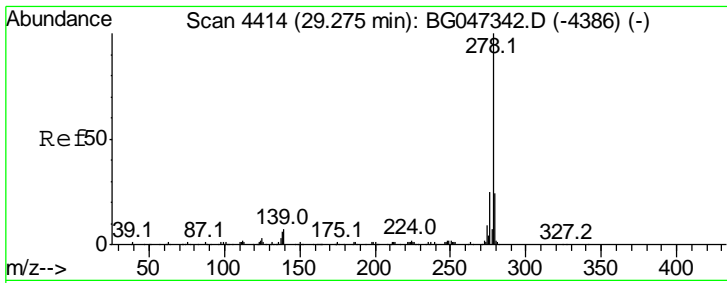
Tgt Ion	Resp	Lower	Upper
252	100		
253	20.8	16.0	24.0
125	4.8	3.7	5.5



#94  
 Indeno(1,2,3-cd)pyrene  
 Concen: 19.516 ng/ul  
 RT: 29.20 min Scan# 4401  
 Delta R.T. -0.00 min  
 Lab File: BG047346.D  
 Acq: 18 Nov 2020 19:27

Tgt Ion	Resp	Lower	Upper
276	100		
138	8.6	7.3	10.9
277	21.9	17.8	26.8

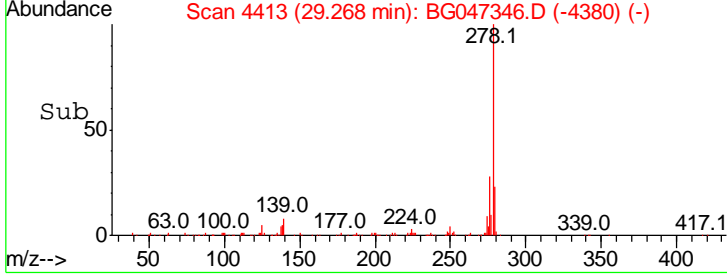
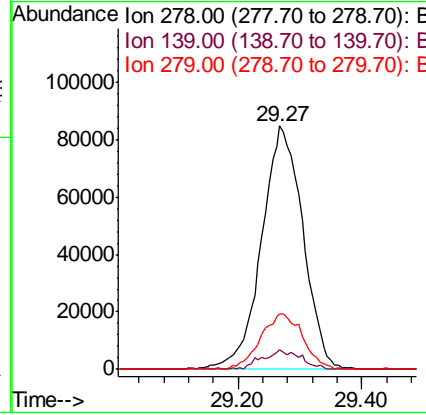
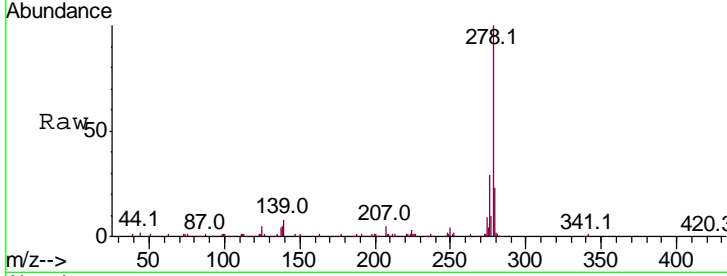




#95  
 Dibenzo(a,h)anthracene  
 Concen: 19.563 ng/ul  
 RT: 29.27 min Scan# 4413  
 Delta R.T. -0.01 min  
 Lab File: BG047346.D  
 Acq: 18 Nov 2020 19:27

Instrument :  
 BNA\_G  
 ClientSampled :  
 SICV008

Tgt Ion	Resp	Lower	Upper
278	100		
139	8.2	5.6	8.4
279	22.7	19.1	28.7



#96  
 Benzo(g,h,i)perylene  
 Concen: 19.326 ng/ul  
 RT: 30.42 min Scan# 4609  
 Delta R.T. -0.01 min  
 Lab File: BG047346.D  
 Acq: 18 Nov 2020 19:27

Tgt Ion	Resp	Lower	Upper
276	100		
138	7.6	7.0	10.6
277	27.1	17.0	25.4#

