

Data Path : Z:\svoasrv\HPCHEM1\BNA_G\Data\BG111921\
 Data File : BG051138.D
 Acq On : 20 Nov 2021 1:28
 Operator : CG/JU
 Sample : M4758-09
 Misc :
 ALS Vial : 11 Sample Multiplier: 1

Instrument :
 BNA_G
 ClientSampleId :
 TP5

Quant Time: Nov 20 03:39:40 2021
 Quant Method : Z:\svoasrv\HPCHEM1\BNA_G\Methods\8270-BG111921.M
 Quant Title : ASP BNA STANDARDS FOR 5 POINT CALIBRATION
 QLast Update : Fri Nov 19 16:26:22 2021
 Response via : Initial Calibration

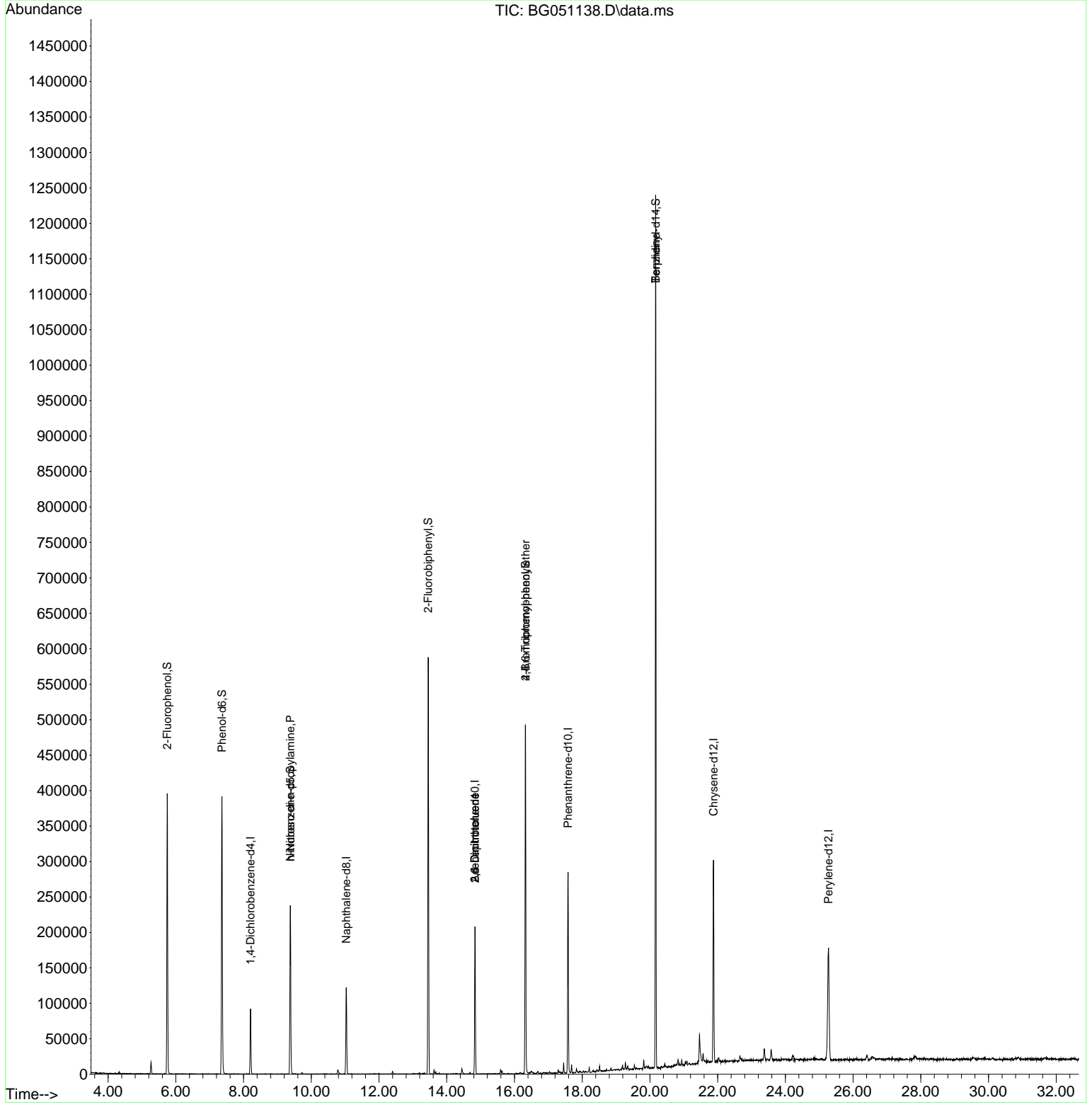
Compound	R.T.	QIon	Response	Conc	Units	Dev(Min)
Internal Standards						
1) 1,4-Dichlorobenzene-d4	8.206	152	25951	20.000	ng	# 0.00
21) Naphthalene-d8	11.032	136	106268	20.000	ng	# 0.00
39) Acenaphthene-d10	14.833	164	73924	20.000	ng	0.00
64) Phenanthrene-d10	17.583	188	180248	20.000	ng	# 0.00
76) Chrysene-d12	21.878	240	177059	20.000	ng	# 0.00
86) Perylene-d12	25.274	264	174543	20.000	ng	0.00
System Monitoring Compounds						
5) 2-Fluorophenol	5.744	112	173095	103.109	ng	0.00
7) Phenol-d6	7.360	99	230461	97.469	ng	0.00
23) Nitrobenzene-d5	9.381	82	157226	67.538	ng	0.00
42) 2,4,6-Tribromophenol	16.326	330	86046	109.513	ng	0.00
45) 2-Fluorobiphenyl	13.453	172	302603	61.769	ng	0.00
79) Terphenyl-d14	20.168	244	567504	58.594	ng	0.00
Target Compounds						
19) n-Nitroso-di-n-propyla...	9.381	70	22417	12.844	ng	# 66
51) 2,6-Dinitrotoluene	14.833	165	9680	8.137	ng	# 11
57) 2,4-Dinitrotoluene	14.833	165	9680	5.681	ng	# 16
67) 4-Bromophenyl-phenylether	16.326	248	6451	3.309	ng	# 1
77) Benzidine	20.168	184	9707	3.339	ng	# 89

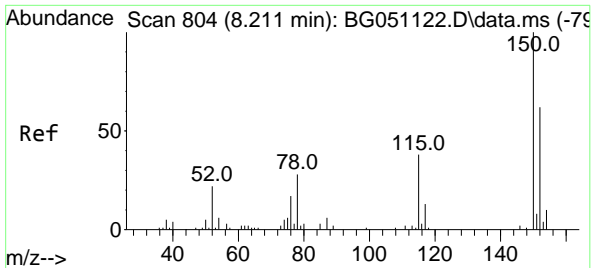
(#) = qualifier out of range (m) = manual integration (+) = signals summed

Data Path : Z:\svoasrv\HPCHEM1\BNA_G\Data\BG111921\
 Data File : BG051138.D
 Acq On : 20 Nov 2021 1:28
 Operator : CG/JU
 Sample : M4758-09
 Misc :
 ALS Vial : 11 Sample Multiplier: 1

Instrument :
 BNA_G
 ClientSampleId :
 TP5

Quant Time: Nov 20 03:39:40 2021
 Quant Method : Z:\svoasrv\HPCHEM1\BNA_G\Methods\8270-BG111921.M
 Quant Title : ASP BNA STANDARDS FOR 5 POINT CALIBRATION
 QLast Update : Fri Nov 19 16:26:22 2021
 Response via : Initial Calibration

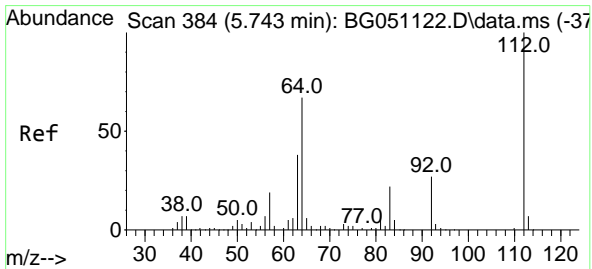
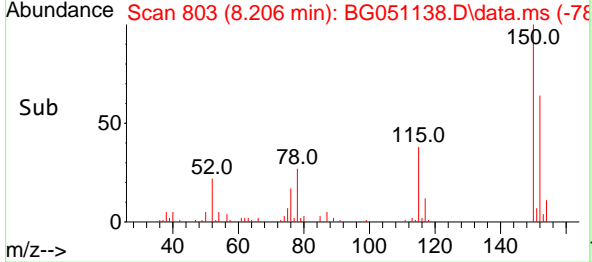
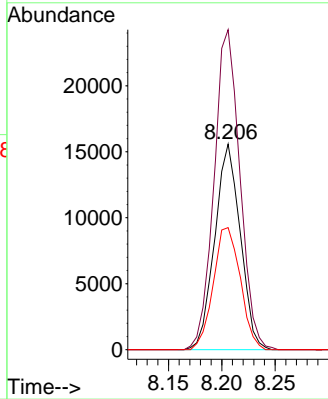
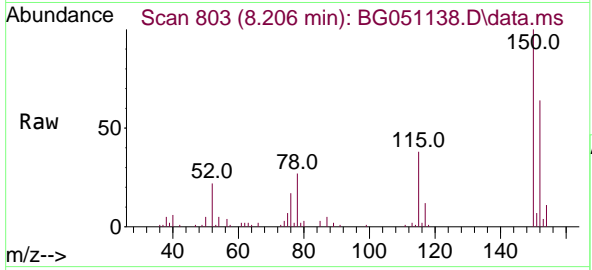




#1
 1,4-Dichlorobenzene-d4
 Concen: 20.000 ng
 RT: 8.206 min Scan# 804
 Delta R.T. -0.005 min
 Lab File: BG051138.D
 Acq: 20 Nov 2021 1:28

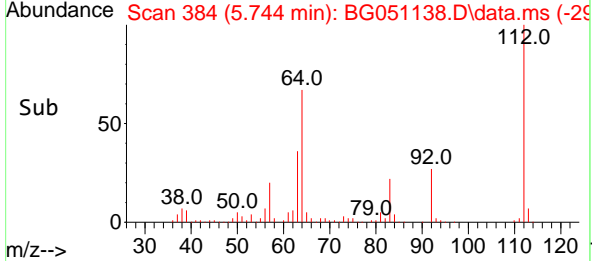
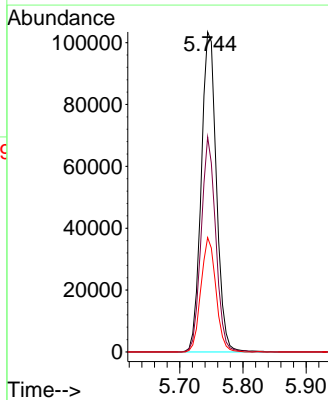
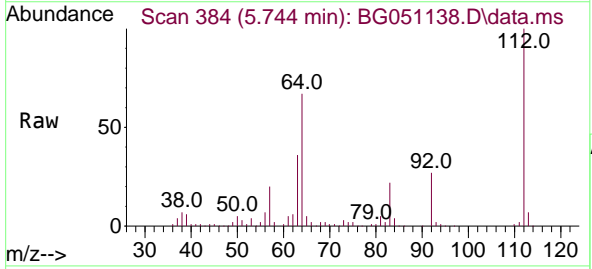
Instrument :
 BNA_G
 ClientSampleId :
 TP5

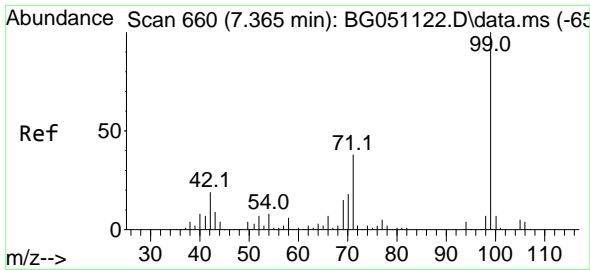
Tgt Ion:152 Resp: 25951
 Ion Ratio Lower Upper
 152 100
 150 155.6 119.4 179.0
 115 59.4 60.2 90.4#



#5
 2-Fluorophenol
 Concen: 103.109 ng
 RT: 5.744 min Scan# 384
 Delta R.T. 0.001 min
 Lab File: BG051138.D
 Acq: 20 Nov 2021 1:28

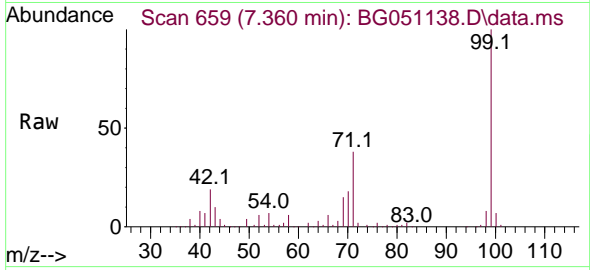
Tgt Ion:112 Resp: 173095
 Ion Ratio Lower Upper
 112 100
 64 67.2 46.7 70.1
 63 35.8 35.3 52.9





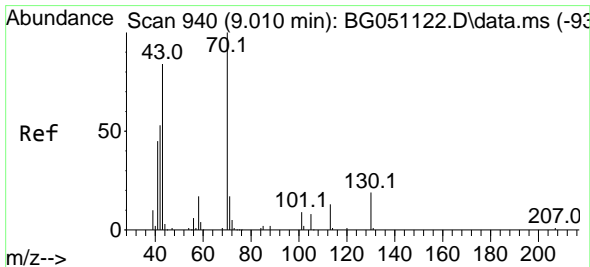
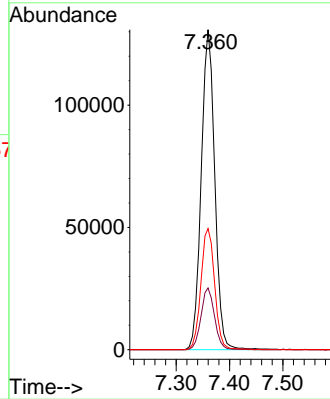
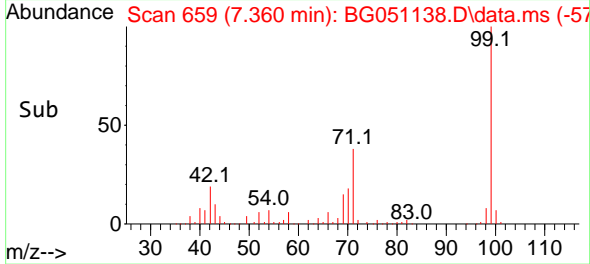
#7
 Phenol-d6
 Concen: 97.469 ng
 RT: 7.360 min Scan# 61
 Delta R.T. -0.005 min
 Lab File: BG051138.D
 Acq: 20 Nov 2021 1:28

Instrument :
 BNA_G
 ClientSampleId :
 TP5

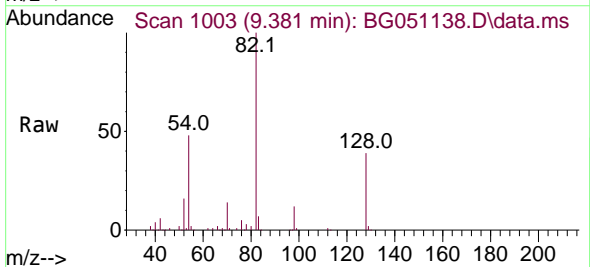


Tgt Ion: 99 Resp: 230461

Ion	Ratio	Lower	Upper
99	100		
42	19.3	20.5	30.7#
71	37.8	41.5	62.3#

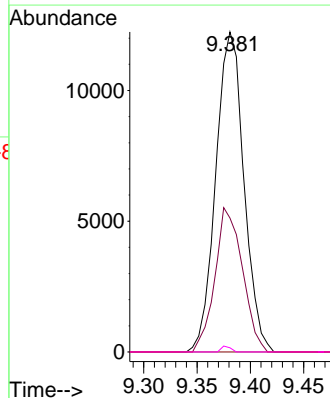
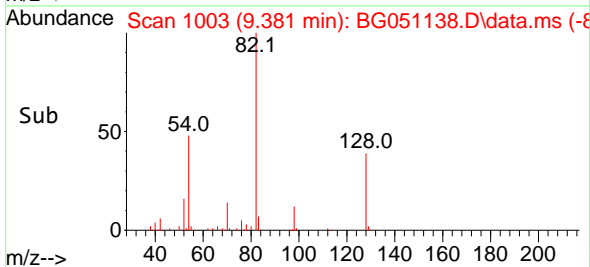


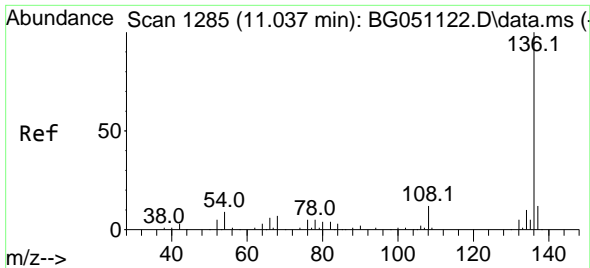
#19
 n-Nitroso-di-n-propylamine
 Concen: 12.844 ng
 RT: 9.381 min Scan# 1003
 Delta R.T. 0.371 min
 Lab File: BG051138.D
 Acq: 20 Nov 2021 1:28



Tgt Ion: 70 Resp: 22417

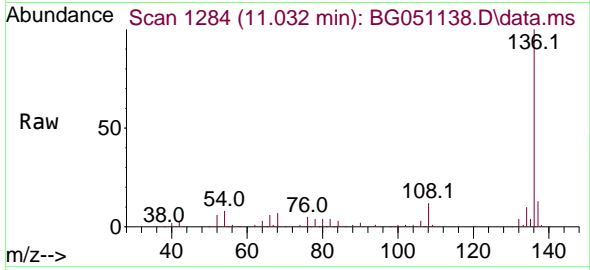
Ion	Ratio	Lower	Upper
70	100		
42	41.8	54.5	81.7#
101	0.0	9.0	13.6#
130	1.3	17.0	25.6#



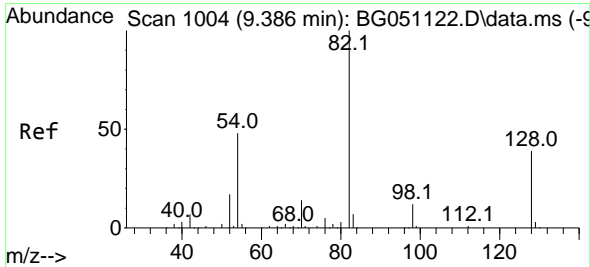
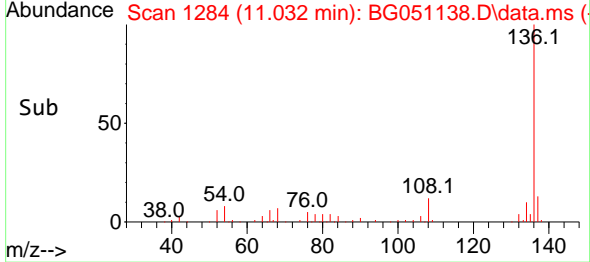
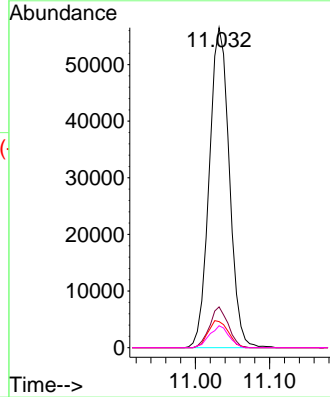


#21
 Naphthalene-d8
 Concen: 20.000 ng
 RT: 11.032 min Scan# 1103
 Delta R.T. -0.005 min
 Lab File: BG051138.D
 Acq: 20 Nov 2021 1:28

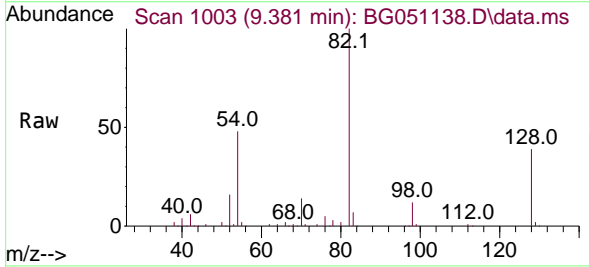
Instrument :
 BNA_G
 ClientSampleId :
 TP5



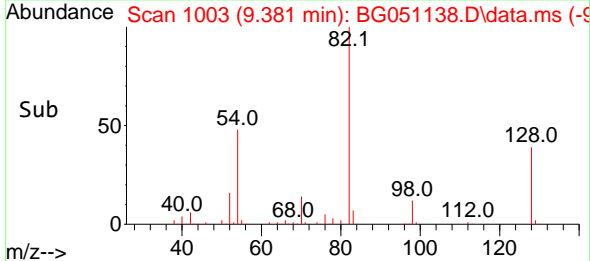
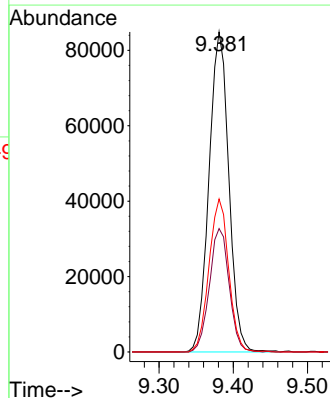
Tgt Ion:136 Resp: 106268
 Ion Ratio Lower Upper
 136 100
 137 12.8 8.2 12.2#
 54 8.1 5.5 8.3
 68 6.9 2.3 3.5#

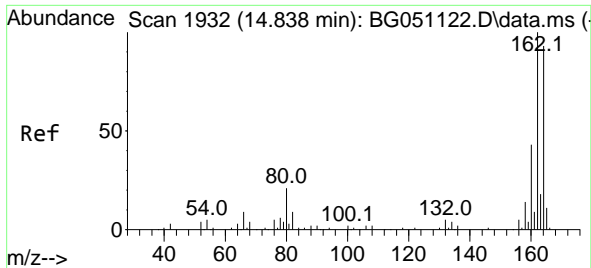


#23
 Nitrobenzene-d5
 Concen: 67.538 ng
 RT: 9.381 min Scan# 1003
 Delta R.T. -0.005 min
 Lab File: BG051138.D
 Acq: 20 Nov 2021 1:28



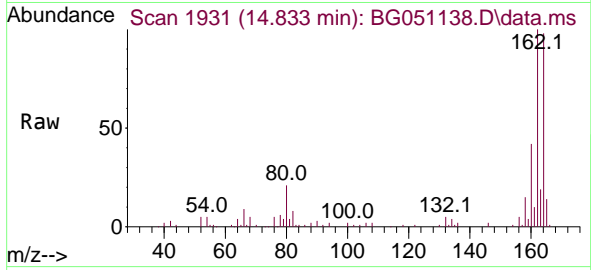
Tgt Ion: 82 Resp: 157226
 Ion Ratio Lower Upper
 82 100
 128 38.6 29.8 44.6
 54 47.8 45.8 68.8



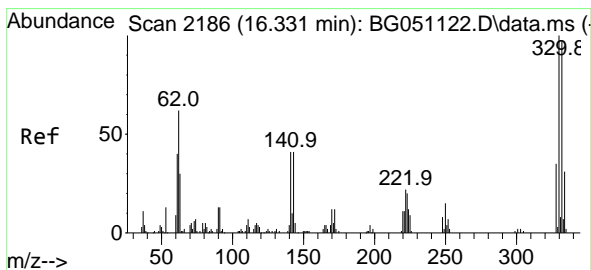
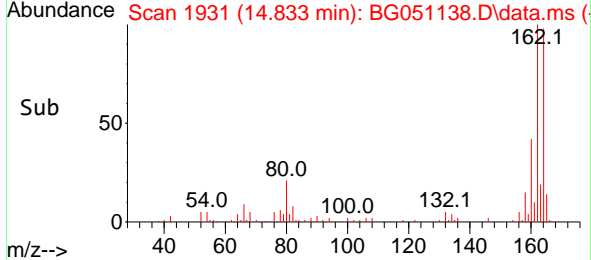
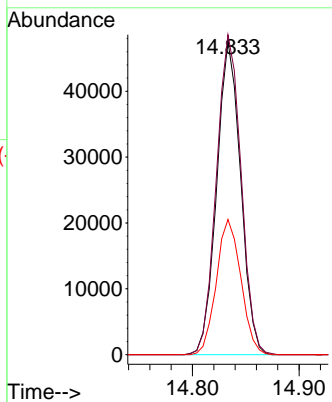


#39
 Acenaphthene-d10
 Concen: 20.000 ng
 RT: 14.833 min Scan# 1931
 Delta R.T. -0.005 min
 Lab File: BG051138.D
 Acq: 20 Nov 2021 1:28

Instrument :
 BNA_G
 ClientSampleId :
 TP5

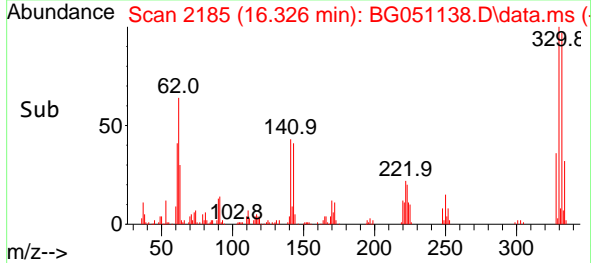
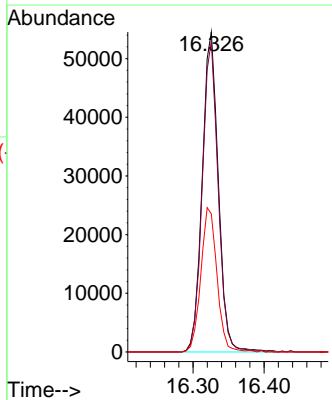
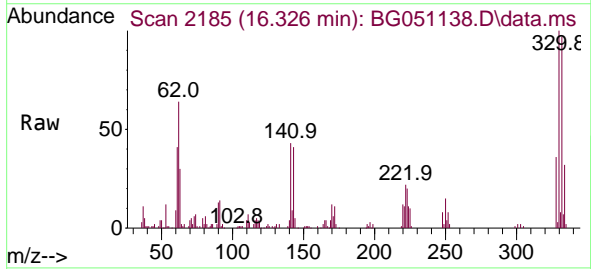


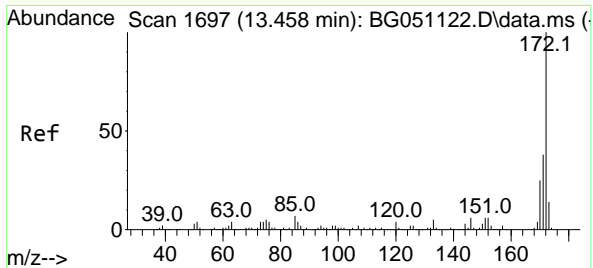
Tgt Ion:164 Resp: 73924
 Ion Ratio Lower Upper
 164 100
 162 101.9 81.4 122.0
 160 43.1 34.9 52.3



#42
 2,4,6-Tribromophenol
 Concen: 109.513 ng
 RT: 16.326 min Scan# 2185
 Delta R.T. -0.005 min
 Lab File: BG051138.D
 Acq: 20 Nov 2021 1:28

Tgt Ion:330 Resp: 86046
 Ion Ratio Lower Upper
 330 100
 332 95.6 77.3 115.9
 141 45.3 35.6 53.4



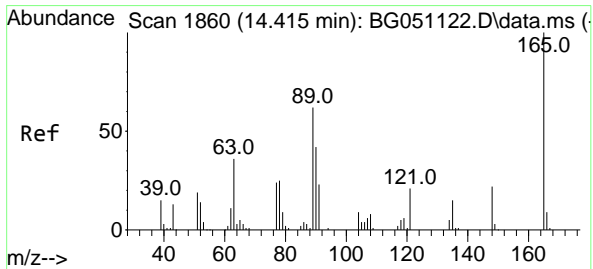
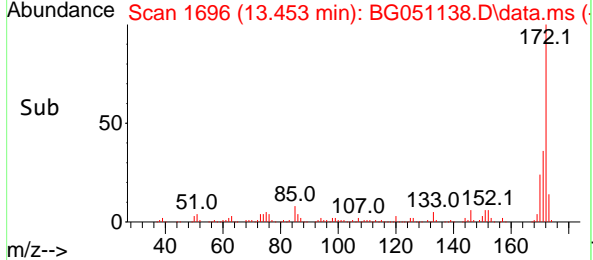
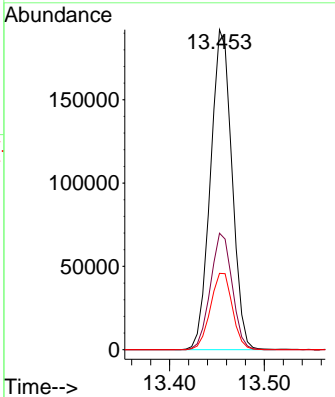
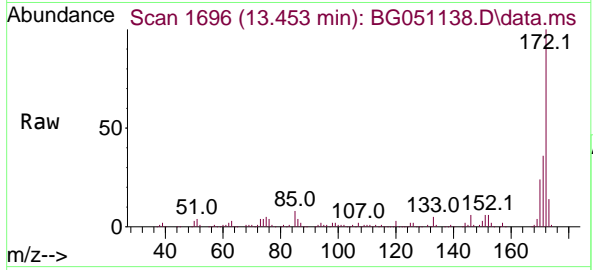


#45
 2-Fluorobiphenyl
 Concen: 61.769 ng
 RT: 13.453 min Scan# 10
 Delta R.T. -0.005 min
 Lab File: BG051138.D
 Acq: 20 Nov 2021 1:28

Instrument : BNA_G
 ClientSampleId : TP5

Tgt Ion:172 Resp: 302603

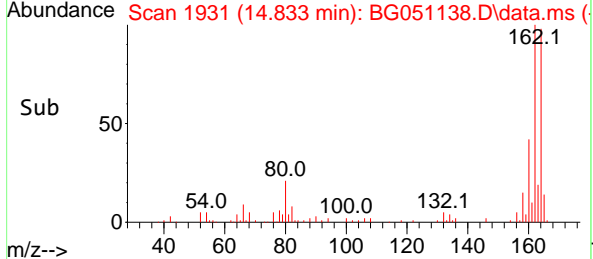
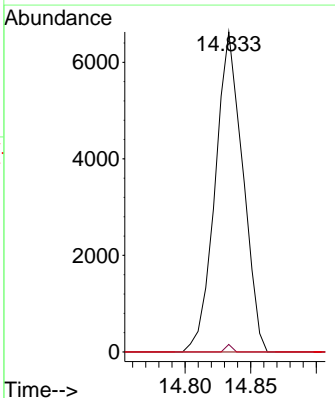
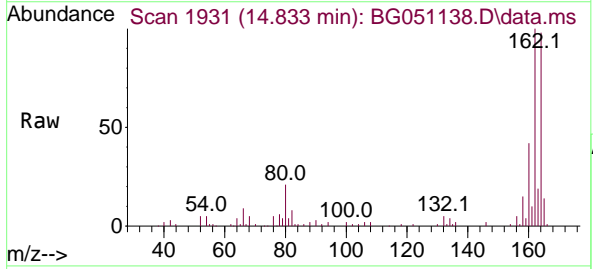
Ion	Ratio	Lower	Upper
172	100		
171	36.4	28.6	43.0
170	23.9	18.6	27.8

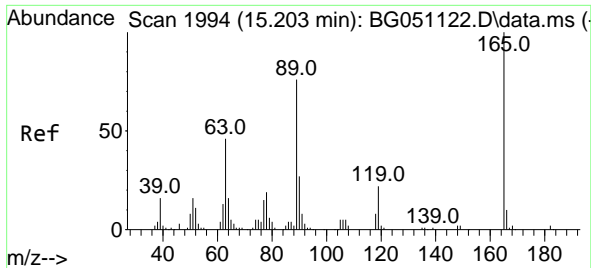


#51
 2,6-Dinitrotoluene
 Concen: 8.137 ng
 RT: 14.833 min Scan# 1931
 Delta R.T. 0.418 min
 Lab File: BG051138.D
 Acq: 20 Nov 2021 1:28

Tgt Ion:165 Resp: 9680

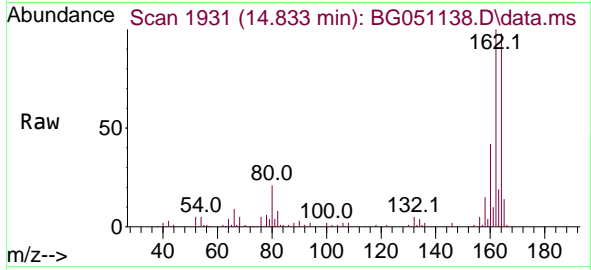
Ion	Ratio	Lower	Upper
165	100		
63	2.4	63.3	94.9#
89	0.0	63.4	95.0#





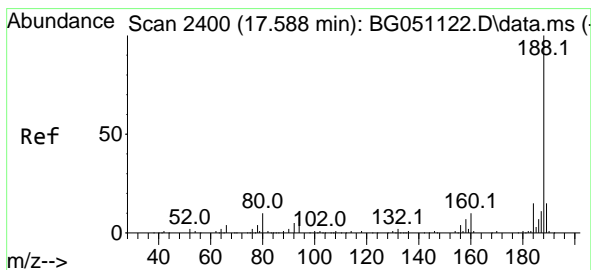
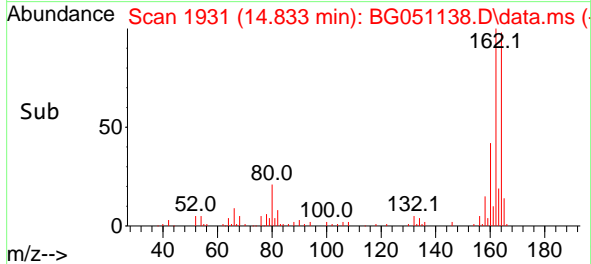
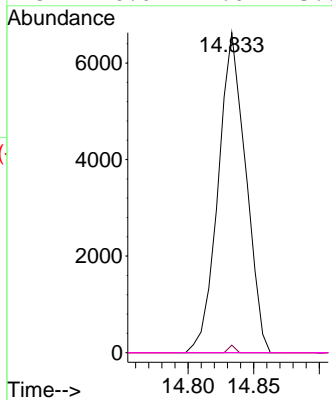
#57
 2,4-Dinitrotoluene
 Concen: 5.681 ng
 RT: 14.833 min Scan# 14
 Delta R.T. -0.369 min
 Lab File: BG051138.D
 Acq: 20 Nov 2021 1:28

Instrument :
 BNA_G
 ClientSampleId :
 TP5



Tgt Ion:165 Resp: 9680

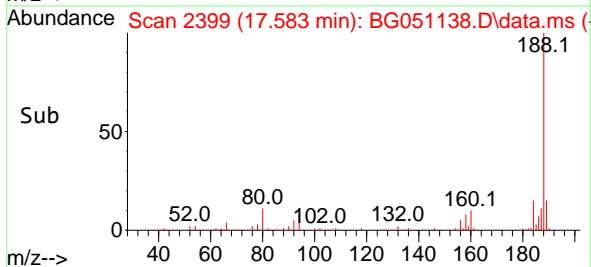
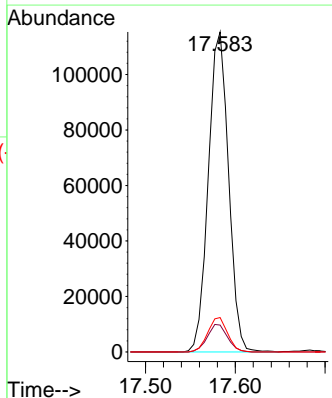
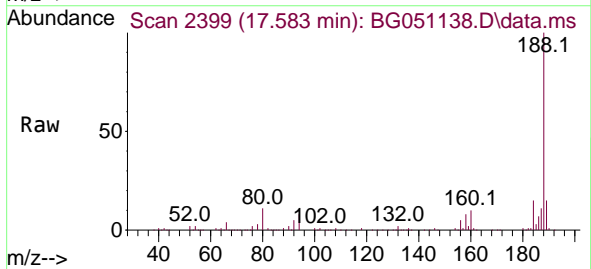
Ion	Ratio	Lower	Upper
165	100		
63	2.4	48.0	72.0#
89	0.0	65.4	98.0#
182	0.0	2.0	3.0#

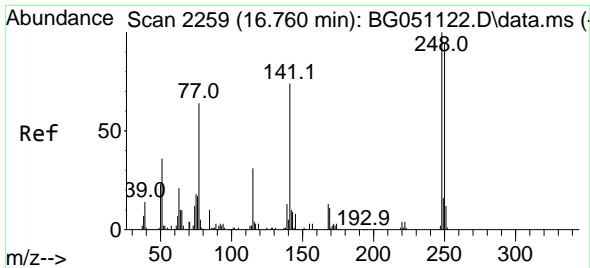


#64
 Phenanthrene-d10
 Concen: 20.000 ng
 RT: 17.583 min Scan# 2399
 Delta R.T. -0.005 min
 Lab File: BG051138.D
 Acq: 20 Nov 2021 1:28

Tgt Ion:188 Resp: 180248

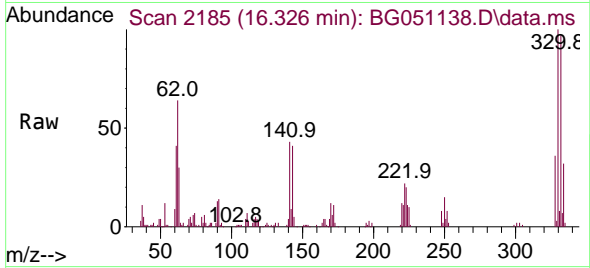
Ion	Ratio	Lower	Upper
188	100		
94	8.4	5.4	8.0#
80	10.7	3.7	5.5#



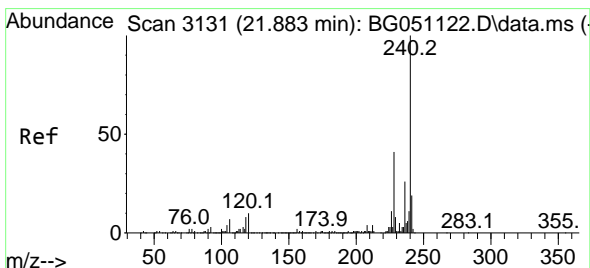
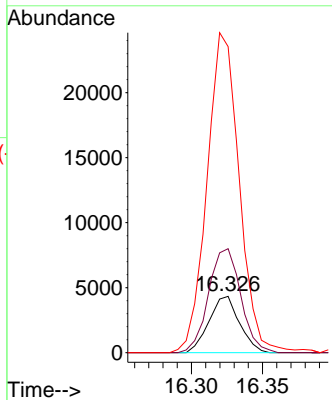
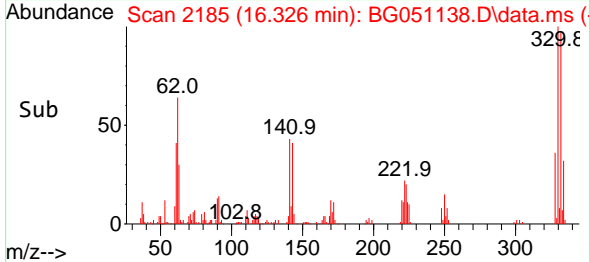


#67
 4-Bromophenyl-phenylether
 Concen: 3.309 ng
 RT: 16.326 min Scan# 2185
 Delta R.T. -0.434 min
 Lab File: BG051138.D
 Acq: 20 Nov 2021 1:28

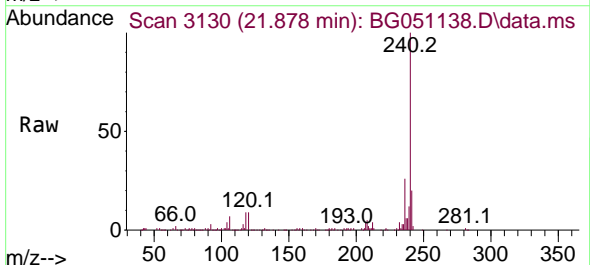
Instrument :
 BNA_G
 ClientSampleId :
 TP5



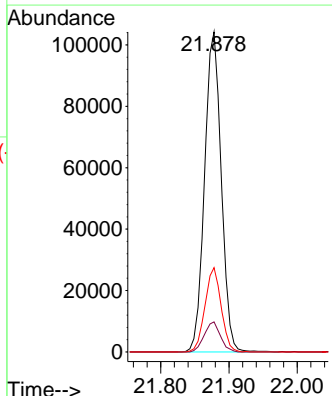
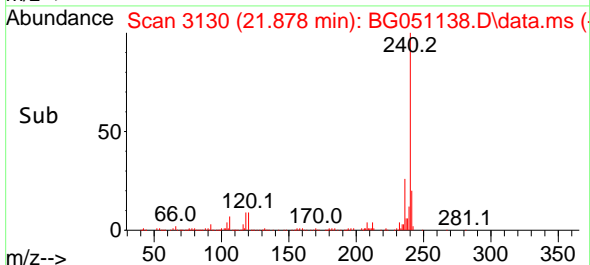
Tgt Ion:248 Resp: 6451
 Ion Ratio Lower Upper
 248 100
 250 184.6 76.1 114.1#
 141 543.5 65.4 98.2#

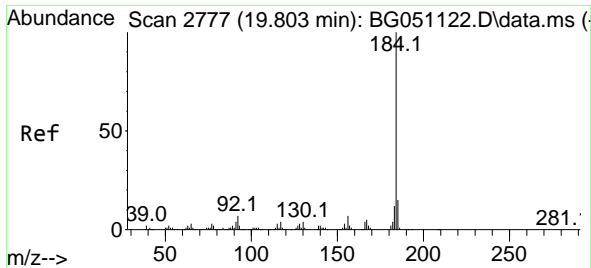


#76
 Chrysene-d12
 Concen: 20.000 ng
 RT: 21.878 min Scan# 3130
 Delta R.T. -0.005 min
 Lab File: BG051138.D
 Acq: 20 Nov 2021 1:28



Tgt Ion:240 Resp: 177059
 Ion Ratio Lower Upper
 240 100
 120 9.4 4.2 6.2#
 236 26.4 21.8 32.6

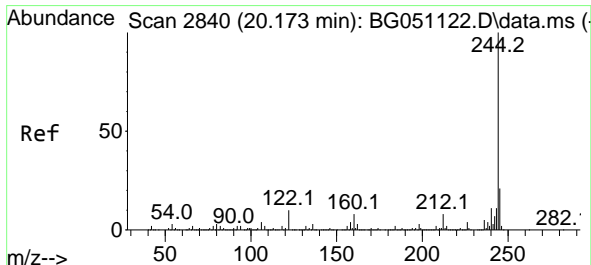
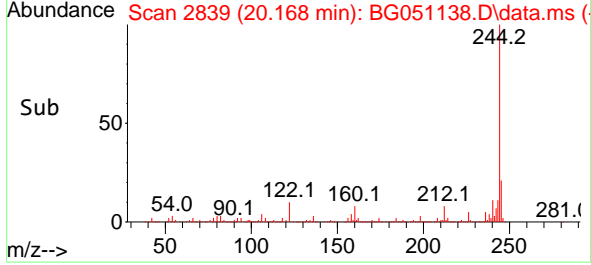
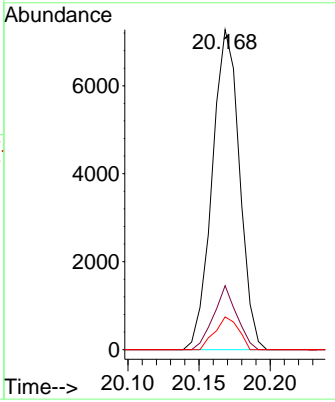
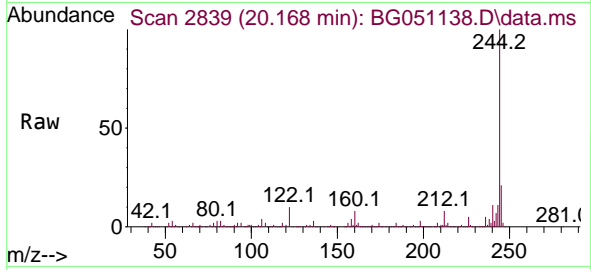




#77
 Benzidine
 Concen: 3.339 ng
 RT: 20.168 min Scan# 2839
 Delta R.T. 0.365 min
 Lab File: BG051138.D
 Acq: 20 Nov 2021 1:28

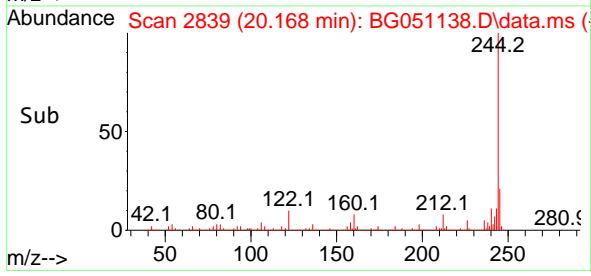
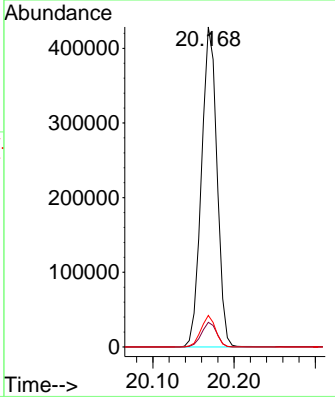
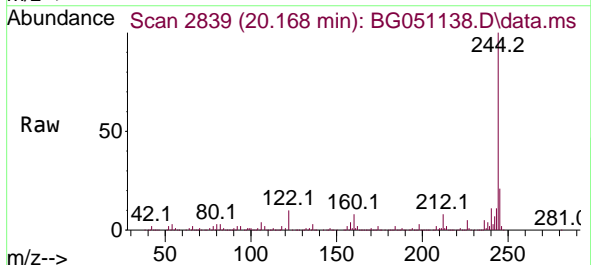
Instrument : BNA_G
 ClientSampleId : TP5

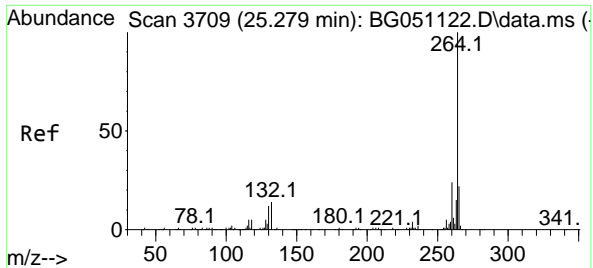
Tgt Ion	Resp	Lower	Upper
184	100		
185	20.0	10.7	16.1#
183	10.3	9.4	14.0



#79
 Terphenyl-d14
 Concen: 58.594 ng
 RT: 20.168 min Scan# 2839
 Delta R.T. -0.005 min
 Lab File: BG051138.D
 Acq: 20 Nov 2021 1:28

Tgt Ion	Resp	Lower	Upper
244	100		
212	7.7	6.9	10.3
122	9.8	5.0	7.6#





#86
 Perylene-d12
 Concen: 20.000 ng
 RT: 25.274 min Scan# 31
 Delta R.T. -0.005 min
 Lab File: BG051138.D
 Acq: 20 Nov 2021 1:28

Instrument :
 BNA_G
 ClientSampleId :
 TP5

Tgt Ion:264 Resp: 174543

Ion	Ratio	Lower	Upper
264	100		
260	23.8	19.4	29.2
265	20.9	16.9	25.3

