

Data Path : Z:\svoasrv\HPCHEM1\BNA_G\Data\BG112223\
 Data File : BG059830.D
 Acq On : 22 Nov 2023 23:06
 Operator : MA/JU
 Sample : 05449-03MSD
 Misc :
 ALS Vial : 12 Sample Multiplier: 1

Instrument :
 BNA_G
 ClientSampleId :
 WC-SED-01MSD

Manual Integrations
 APPROVED

Reviewed By :Yogesh Patel 11/25/2023
 Supervised By :mohammad ahmed 11/25/2023

Quant Time: Nov 23 01:31:16 2023
 Quant Method : Z:\svoasrv\HPCHEM1\BNA_G\Methods\8270-BG111623.M
 Quant Title : ASP BNA STANDARDS FOR 5 POINT CALIBRATION
 QLast Update : Fri Nov 17 01:51:38 2023
 Response via : Initial Calibration

Compound	R.T.	QIon	Response	Conc	Units	Dev(Min)	
Internal Standards							
1) 1,4-Dichlorobenzene-d4	8.337	152	21442	20.000	ng	0.00	
21) Naphthalene-d8	11.175	136	94127	20.000	ng	#-0.02	
39) Acenaphthene-d10	14.965	164	80194	20.000	ng	0.00	
64) Phenanthrene-d10	17.714	188	204634	20.000	ng	# 0.00	
76) Chrysene-d12	22.045	240	174501	20.000	ng	# 0.00	
86) Perylene-d12	25.623	264	192445	20.000	ng	-0.01	
System Monitoring Compounds							
5) 2-Fluorophenol	5.822	112	10079	7.912	ng	0.00	
7) Phenol-d6	7.450	99	56611	29.987	ng	0.00	
23) Nitrobenzene-d5	9.530	82	254877	103.416	ng	-0.01	
42) 2,4,6-Tribromophenol	16.451	330	12058	13.252	ng	0.00	
45) 2-Fluorobiphenyl	13.584	172	596073	100.050	ng	-0.01	
79) Terphenyl-d14	20.288	244	749549	63.411	ng	0.00	
Target Compounds							
2) 1,4-Dioxane	3.654	88	14146	23.642	ng	#	81
3) Pyridine	4.072	79	40814	24.974	ng		93
4) n-Nitrosodimethylamine	4.001	42	30691	35.301	ng	#	63
6) Aniline	7.650	93	76665	30.772	ng	#	88
8) 2-Chlorophenol	7.879	128	10130	7.330	ng		97
9) Benzaldehyde	7.468	77	8740	6.849	ng	#	79
10) Phenol	7.479	94	20440	10.505	ng		90
11) bis(2-Chloroethyl)ether	7.744	93	48075	39.692	ng		92
12) 1,3-Dichlorobenzene	8.208	146	64756	42.183	ng		95
13) 1,4-Dichlorobenzene	8.372	146	65509	42.495	ng		93
14) 1,2-Dichlorobenzene	8.684	146	62591	40.867	ng		92
15) Benzyl Alcohol	8.572	79	100016	46.459	ng		98
16) 2,2'-oxybis(1-Chloropr...	8.842	45	18860	42.323	ng	#	65
17) 2-Methylphenol	8.754	107	29703	20.726	ng		84
18) Hexachloroethane	9.412	117	28974	44.282	ng		91
19) n-Nitroso-di-n-propyla...	9.136	70	64930	43.676	ng	#	88
20) 3+4-Methylphenols	9.083	107	36435	18.314	ng		95
22) Acetophenone	9.177	105	135510	50.851	ng		98
24) Nitrobenzene	9.577	77	111113	48.952	ng		95
25) Isophorone	10.076	82	191032	46.170	ng		99
26) 2-Nitrophenol	10.282	139	7755	9.319	ng	#	64
27) 2,4-Dimethylphenol	10.305	122	38283	22.626	ng		87
28) bis(2-Chloroethoxy)met...	10.564	93	79161	50.913	ng		93
29) 2,4-Dichlorophenol	10.811	162	12307	8.519	ng		94
30) 1,2,4-Trichlorobenzene	11.022	180	72919	49.946	ng		92
31) Naphthalene	11.228	128	232428	49.107	ng	#	95
33) 4-Chloroaniline	11.351	127	86351	42.893	ng	#	93
34) Hexachlorobutadiene	11.457	225	52633	52.971	ng		95
35) Caprolactam	12.127	113	19536	37.003	ng		90
36) 4-Chloro-3-methylphenol	12.421	107	45175	23.514	ng		95
37) 2-Methylnaphthalene	12.808	142	214944	53.920	ng		92
38) 1-Methylnaphthalene	13.032	142	181732	49.435	ng		89
40) 1,2,4,5-Tetrachloroben...	13.155	216	97161	44.862	ng		98
41) Hexachlorocyclopentadiene	13.102	237	109184	80.369	ng		89
43) 2,4,6-Trichlorophenol	13.402	196	1707m	1.133	ng		
44) 2,4,5-Trichlorophenol	13.461	196	6793	3.839	ng	#	36

Data Path : Z:\svoasrv\HPCHEM1\BNA_G\Data\BG112223\
 Data File : BG059830.D
 Acq On : 22 Nov 2023 23:06
 Operator : MA/JU
 Sample : 05449-03MSD
 Misc :
 ALS Vial : 12 Sample Multiplier: 1

Instrument :
 BNA_G
 ClientSampleId :
 WC-SED-01MSD

Manual Integrations
 APPROVED

Reviewed By :Yogesh Patel 11/25/2023
 Supervised By :mohammad ahmed 11/25/2023

Quant Time: Nov 23 01:31:16 2023
 Quant Method : Z:\svoasrv\HPCHEM1\BNA_G\Methods\8270-BG111623.M
 Quant Title : ASP BNA STANDARDS FOR 5 POINT CALIBRATION
 QLast Update : Fri Nov 17 01:51:38 2023
 Response via : Initial Calibration

Compound	R.T.	QIon	Response	Conc	Units	Dev(Min)
46) 1,1'-Biphenyl	13.801	154	321335	51.049	ng	98
47) 2-Chloronaphthalene	13.854	162	223833	51.752	ng	98
48) 2-Nitroaniline	14.072	65	94902	61.457	ng #	89
49) Acenaphthylene	14.694	152	400322	54.283	ng	96
50) Dimethylphthalate	14.407	163	222427	35.791	ng	98
51) 2,6-Dinitrotoluene	14.548	165	66840	56.694	ng	98
52) Acenaphthene	15.029	154	223109	50.304	ng	95
53) 3-Nitroaniline	14.894	138	73434	53.214	ng #	85
55) Dibenzofuran	15.358	168	381711	52.200	ng #	88
57) 2,4-Dinitrotoluene	15.329	165	102045	56.284	ng	95
58) Fluorene	16.005	166	331963	54.642	ng	99
59) 2,3,4,6-Tetrachlorophenol	15.552	232	1612m	1.036	ng	
60) Diethylphthalate	15.746	149	325502	48.837	ng	98
61) 4-Chlorophenyl-phenyle...	15.987	204	166756	53.328	ng	99
62) 4-Nitroaniline	16.052	138	72467	52.397	ng	96
63) Azobenzene	16.281	77	384518	51.914	ng	92
66) n-Nitrosodiphenylamine	16.210	169	306987	51.355	ng	97
67) 4-Bromophenyl-phenylether	16.886	248	112837	51.327	ng	98
68) Hexachlorobenzene	16.980	284	120289	58.625	ng	94
69) Atrazine	17.144	200	137632	71.812	ng	95
70) Pentachlorophenol	17.327	266	2351	1.502	ng #	60
71) Phenanthrene	17.756	178	546696	52.546	ng	95
72) Anthracene	17.850	178	563230	52.103	ng	98
73) Carbazole	18.126	167	499275	52.868	ng	98
74) Di-n-butylphthalate	18.625	149	603610	52.878	ng #	96
75) Fluoranthene	19.753	202	642596	51.503	ng	97
77) Benzidine	19.941	184	449525	113.604	ng	97
78) Pyrene	20.117	202	635856	53.555	ng	99
80) Butylbenzylphthalate	20.969	149	257462	52.884	ng	97
81) Benzo(a)anthracene	22.021	228	604323	50.614	ng	96
82) 3,3'-Dichlorobenzidine	21.933	252	197020	44.292	ng #	98
83) Chrysene	22.098	228	552544	50.483	ng	94
84) Bis(2-ethylhexyl)phtha...	21.845	149	343012	50.401	ng #	96
85) Di-n-octyl phthalate	23.179	149	575634	43.936	ng	96
87) Indeno(1,2,3-cd)pyrene	29.788	276	1048251	71.987	ng #	73
88) Benzo(b)fluoranthene	24.471	252	655818	62.176	ng #	95
89) Benzo(k)fluoranthene	24.548	252	590244	56.603	ng #	99
90) Benzo(a)pyrene	25.458	252	543255	48.259	ng #	99
91) Dibenzo(a,h)anthracene	29.888	278	895570	72.693	ng #	97
92) Benzo(g,h,i)perylene	31.134	276	800980	68.521	ng #	90

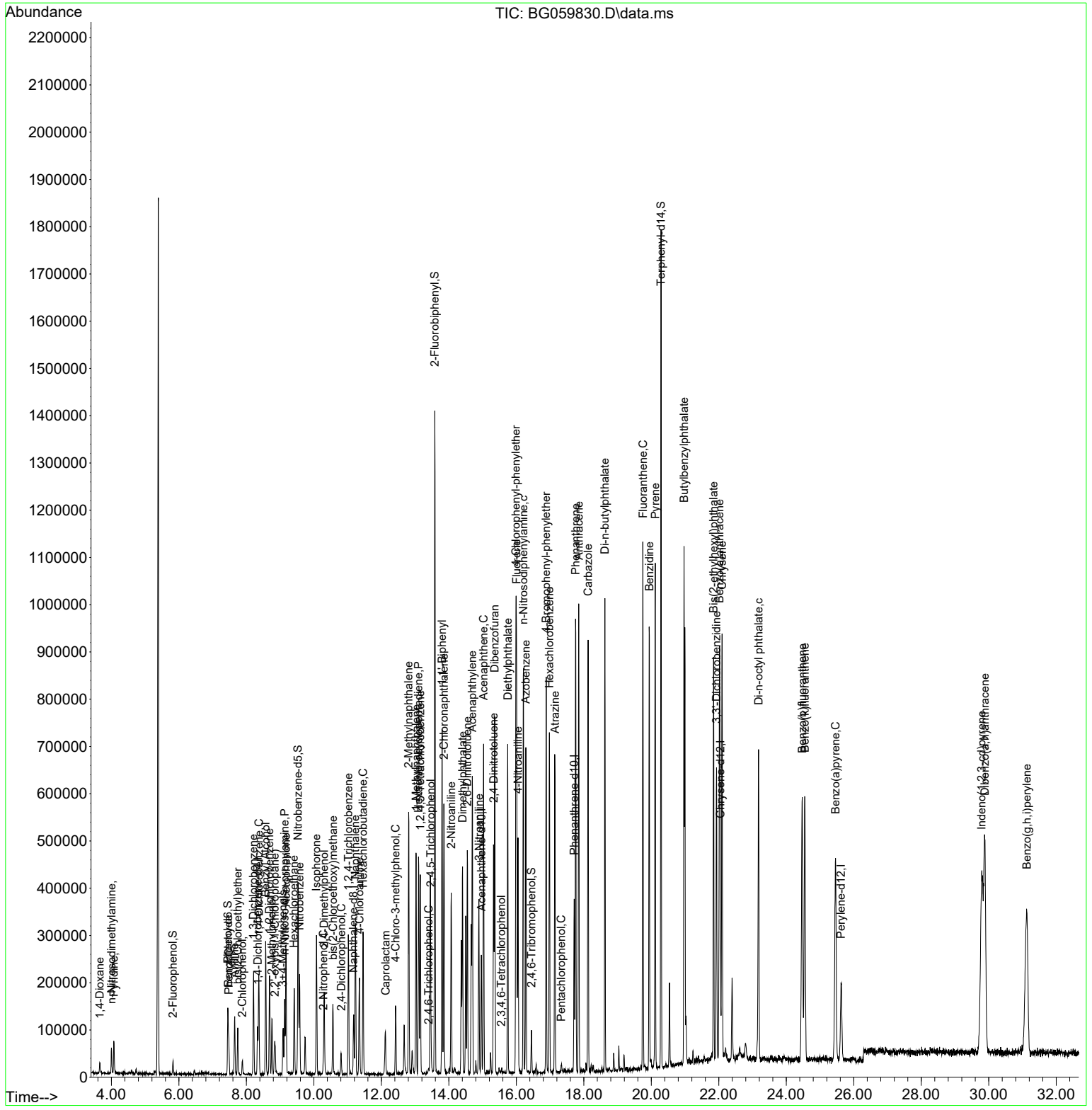
(#) = qualifier out of range (m) = manual integration (+) = signals summed

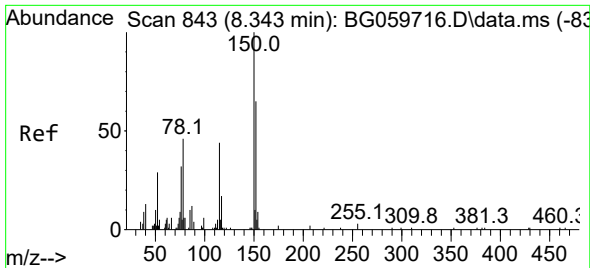
Data Path : Z:\svoasrv\HPCHEM1\BNA_G\Data\BG112223\
 Data File : BG059830.D
 Acq On : 22 Nov 2023 23:06
 Operator : MA/JU
 Sample : 05449-03MSD
 Misc :
 ALS Vial : 12 Sample Multiplier: 1

Instrument :
 BNA_G
 ClientSampleId :
 WC-SED-01MSD

Quant Time: Nov 23 01:31:16 2023
 Quant Method : Z:\svoasrv\HPCHEM1\BNA_G\Methods\8270-BG11623.M
 Quant Title : ASP BNA STANDARDS FOR 5 POINT CALIBRATION
 QLast Update : Fri Nov 17 01:51:38 2023
 Response via : Initial Calibration

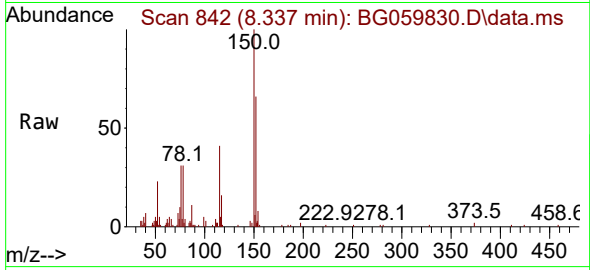
Manual Integrations
APPROVED
 Reviewed By :Yogesh Patel 11/25/2023
 Supervised By :mohammad ahmed 11/25/2023





#1
 1,4-Dichlorobenzene-d4
 Concen: 20.000 ng
 RT: 8.337 min Scan# 84
 Delta R.T. -0.006 min
 Lab File: BG059830.D
 Acq: 22 Nov 2023 23:06

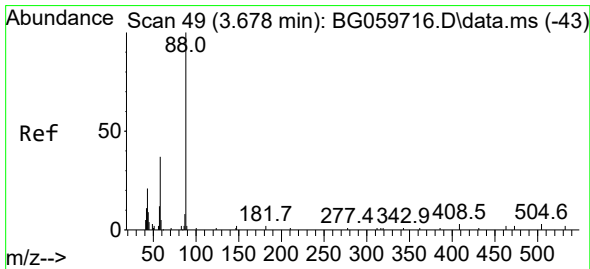
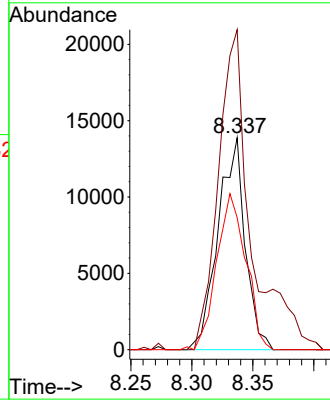
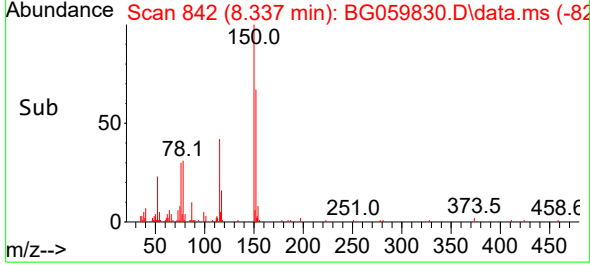
Instrument : BNA_G
 Client Sample Id : WC-SED-01MSD



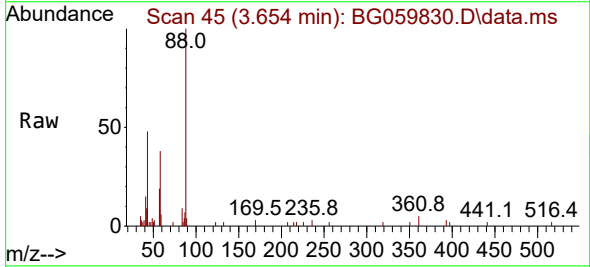
Tgt Ion: 152 Resp: 2144
 Ion Ratio Lower Upper
 152 100
 150 145.8 122.2 183.4
 115 60.2 54.2 81.4

Manual Integrations
 APPROVED

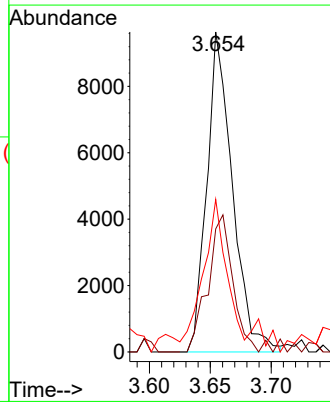
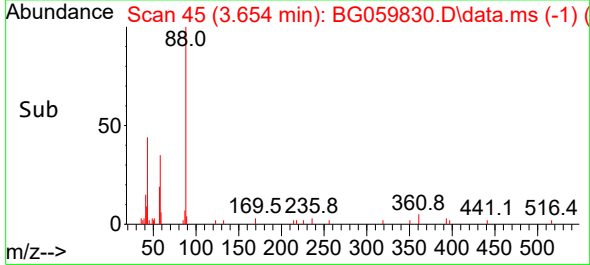
Reviewed By :Yogesh Patel 11/25/2023
 Supervised By :mohammad ahmed 11/25/2023

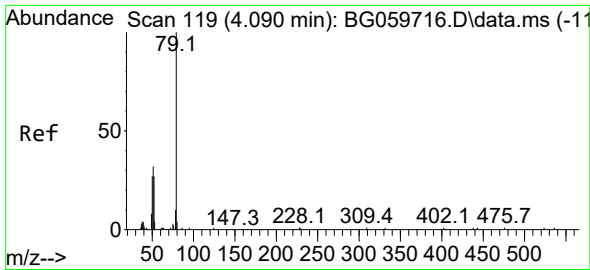


#2
 1,4-Dioxane
 Concen: 23.642 ng
 RT: 3.654 min Scan# 45
 Delta R.T. -0.024 min
 Lab File: BG059830.D
 Acq: 22 Nov 2023 23:06



Tgt Ion: 88 Resp: 14146
 Ion Ratio Lower Upper
 88 100
 58 41.5 28.6 42.8
 43 37.7 17.5 26.3#





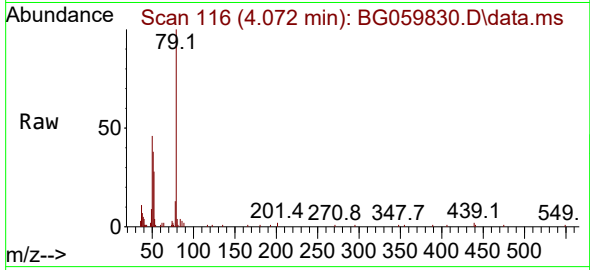
#3
 Pyridine
 Concen: 24.974 ng
 RT: 4.072 min Scan# 111
 Delta R.T. -0.018 min
 Lab File: BG059830.D
 Acq: 22 Nov 2023 23:06

Instrument :

BNA_G

ClientSampleId :

WC-SED-01MSD



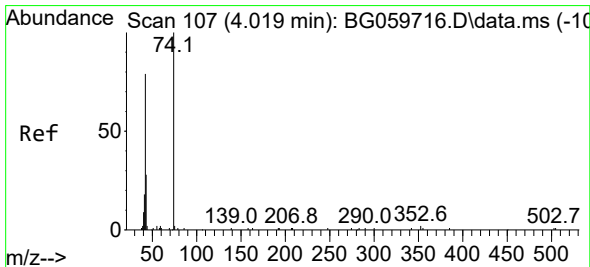
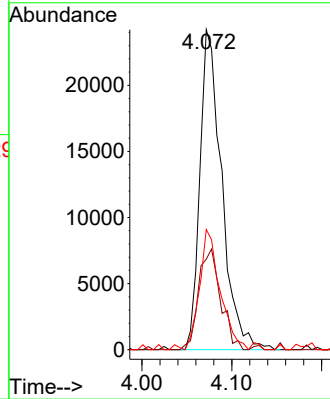
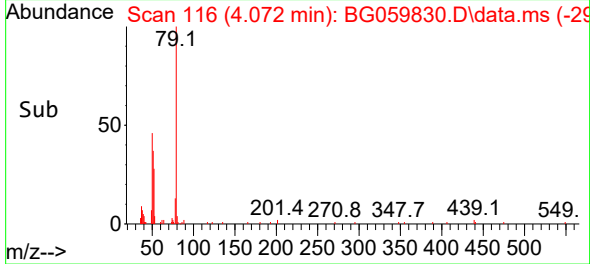
Tgt Ion: 79 Resp: 40814
 Ion Ratio Lower Upper
 79 100
 52 28.3 21.6 32.4
 51 37.5 25.3 37.9

Manual Integrations

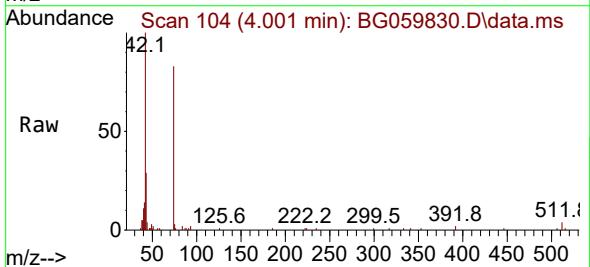
APPROVED

Reviewed By :Yogesh Patel 11/25/2023

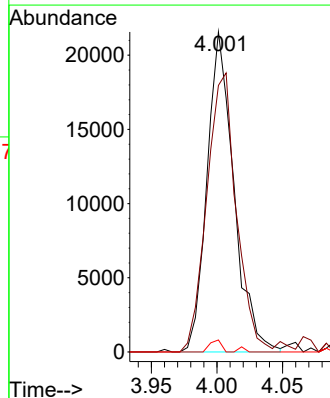
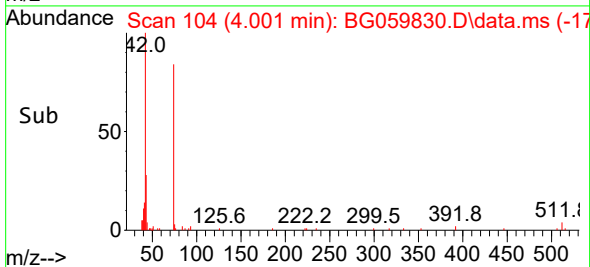
Supervised By :mohammad ahmed 11/25/2023

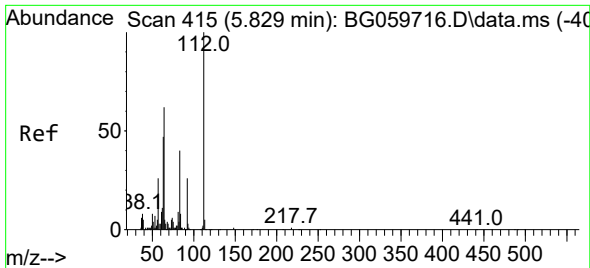


#4
 n-Nitrosodimethylamine
 Concen: 35.301 ng
 RT: 4.001 min Scan# 104
 Delta R.T. -0.018 min
 Lab File: BG059830.D
 Acq: 22 Nov 2023 23:06



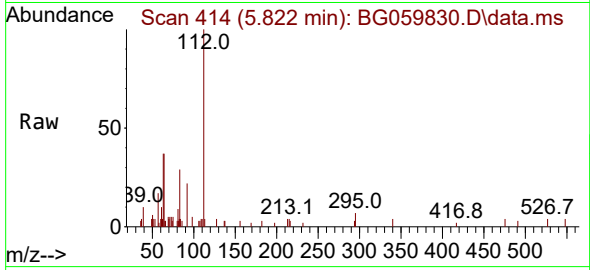
Tgt Ion: 42 Resp: 30691
 Ion Ratio Lower Upper
 42 100
 74 83.3 101.2 151.8#
 44 3.7 2.4 3.6#





#5
 2-Fluorophenol
 Concen: 7.912 ng
 RT: 5.822 min Scan# 411
 Delta R.T. -0.006 min
 Lab File: BG059830.D
 Acq: 22 Nov 2023 23:06

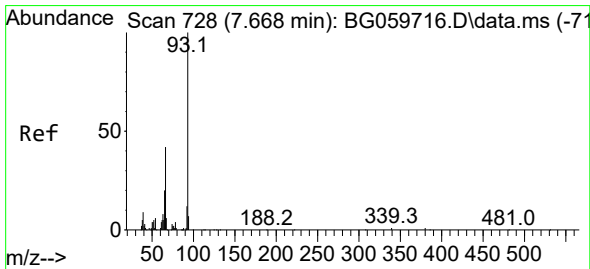
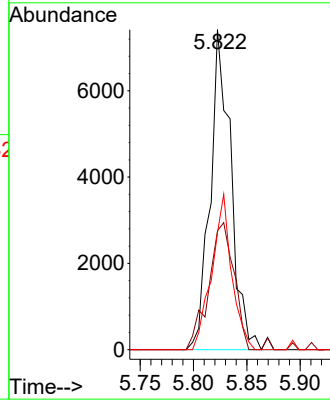
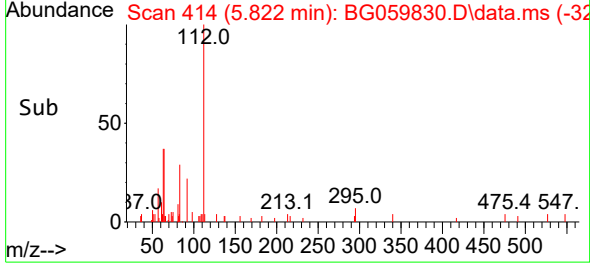
Instrument : BNA_G
 ClientSampleId : WC-SED-01MSD



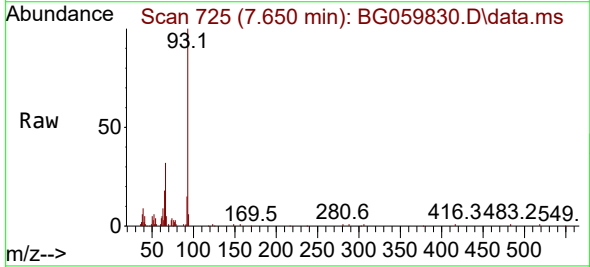
Tgt Ion: 112 Resp: 10079
 Ion Ratio Lower Upper
 112 100
 64 37.2 49.5 74.3
 63 36.5 37.4 56.2

Manual Integrations
 APPROVED

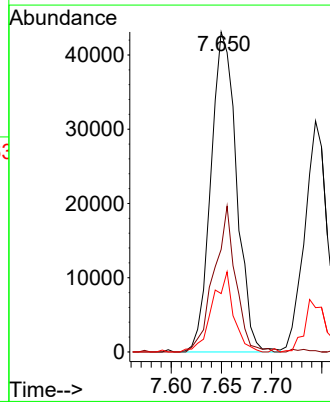
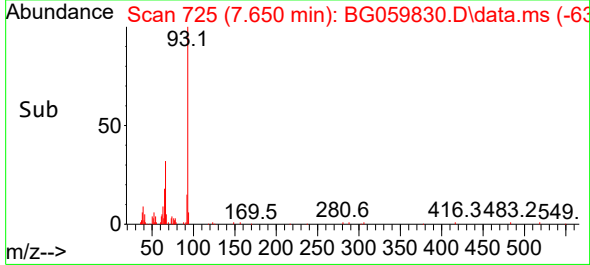
Reviewed By :Yogesh Patel 11/25/2023
 Supervised By :mohammad ahmed 11/25/2023

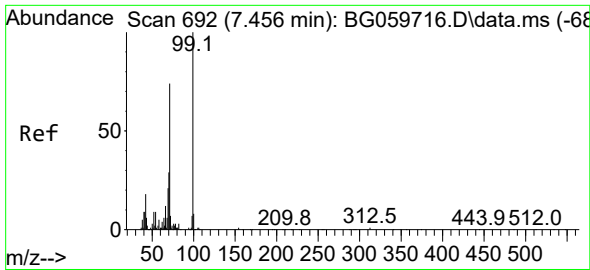


#6
 Aniline
 Concen: 30.772 ng
 RT: 7.650 min Scan# 725
 Delta R.T. -0.018 min
 Lab File: BG059830.D
 Acq: 22 Nov 2023 23:06



Tgt Ion: 93 Resp: 76665
 Ion Ratio Lower Upper
 93 100
 66 32.1 33.9 50.9
 65 18.3 15.8 23.8





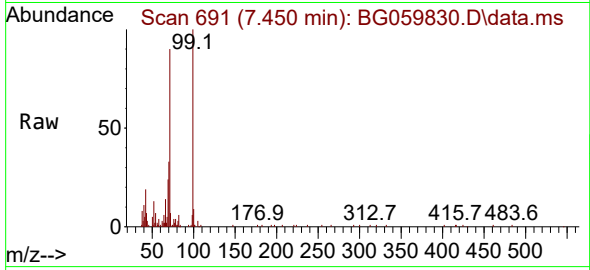
#7
 Phenol-d6
 Concen: 29.987 ng
 RT: 7.450 min Scan# 691
 Delta R.T. -0.006 min
 Lab File: BG059830.D
 Acq: 22 Nov 2023 23:06

Instrument :

BNA_G

ClientSampleId :

WC-SED-01MSD



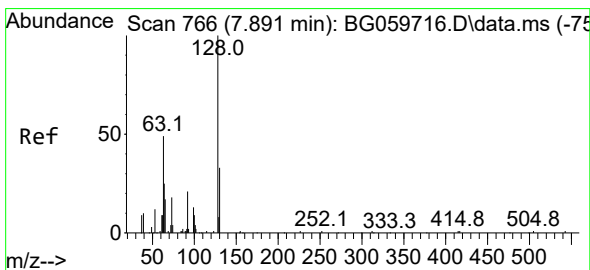
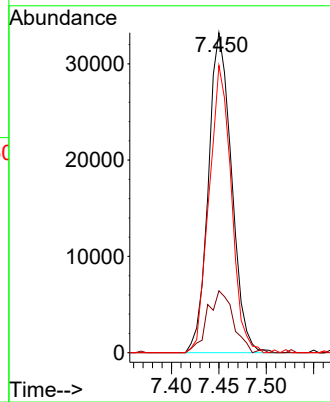
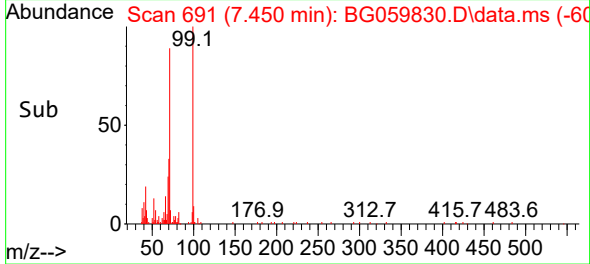
Tgt Ion: 99 Resp: 5661
 Ion Ratio Lower Upper
 99 100
 42 19.3 14.3 21.5
 71 89.7 59.3 88.9

Manual Integrations

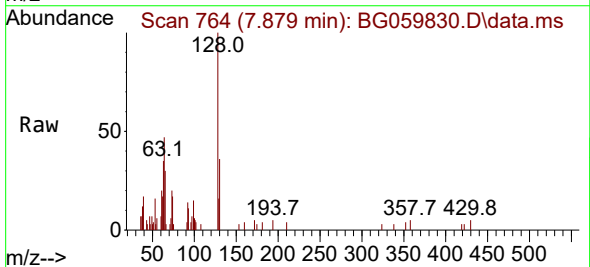
APPROVED

Reviewed By :Yogesh Patel 11/25/2023

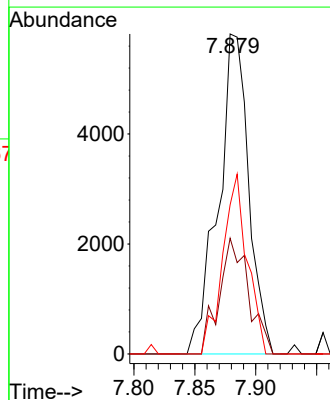
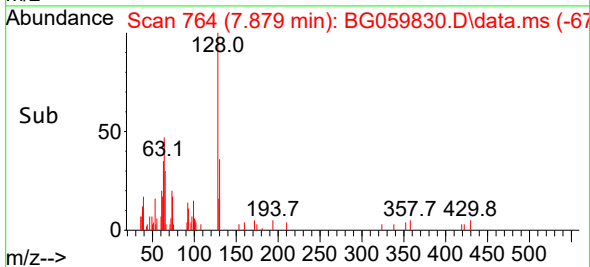
Supervised By :mohammad ahmed 11/25/2023

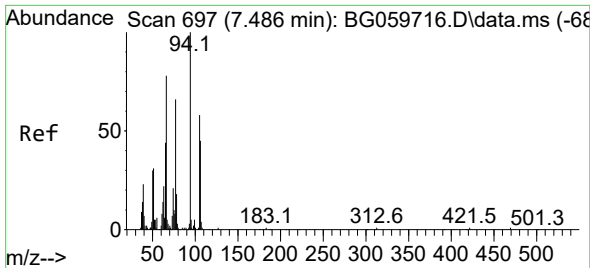


#8
 2-Chlorophenol
 Concen: 7.330 ng
 RT: 7.879 min Scan# 764
 Delta R.T. -0.012 min
 Lab File: BG059830.D
 Acq: 22 Nov 2023 23:06



Tgt Ion:128 Resp: 10130
 Ion Ratio Lower Upper
 128 100
 130 36.1 13.1 53.1
 64 46.6 27.0 67.0





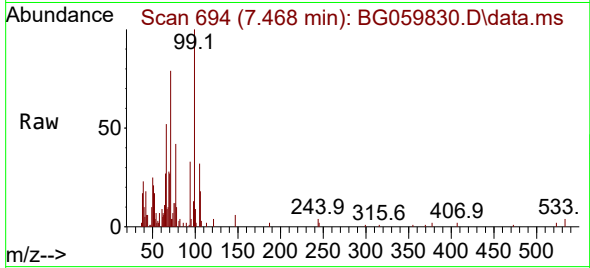
#9
 Benzaldehyde
 Concen: 6.849 ng
 RT: 7.468 min Scan# 694
 Delta R.T. -0.018 min
 Lab File: BG059830.D
 Acq: 22 Nov 2023 23:06

Instrument :

BNA_G

ClientSampleId :

WC-SED-01MSD



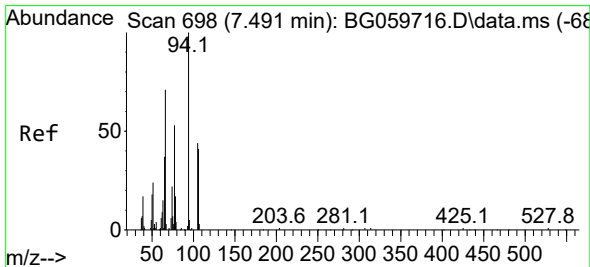
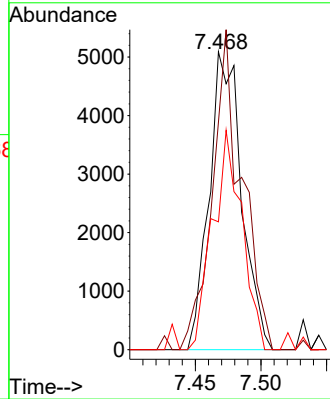
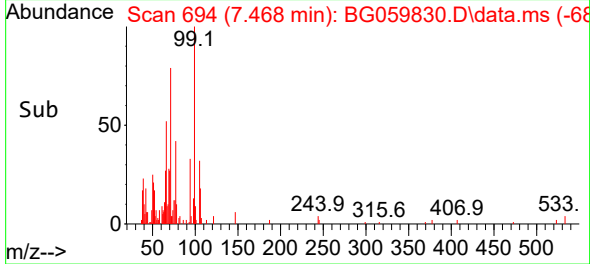
Tgt Ion: 77 Resp: 8740
 Ion Ratio Lower Upper
 77 100
 105 76.4 68.0 108.0
 106 42.9 48.1 88.1

Manual Integrations

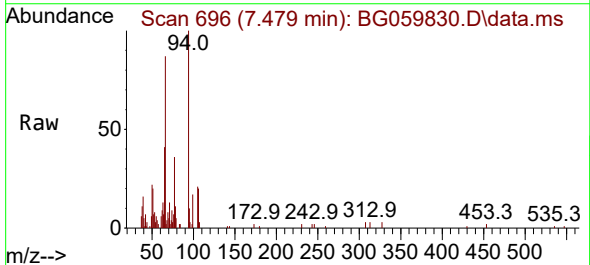
APPROVED

Reviewed By :Yogesh Patel 11/25/2023

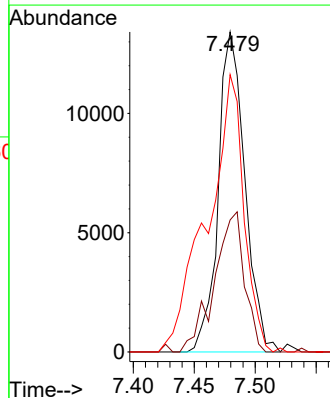
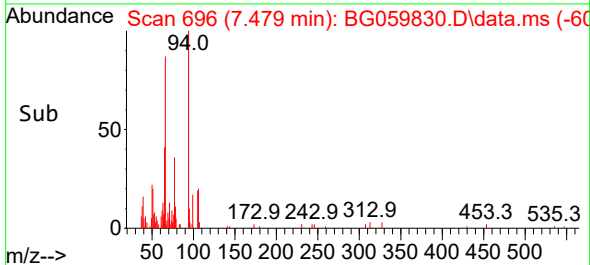
Supervised By :mohammad ahmed 11/25/2023

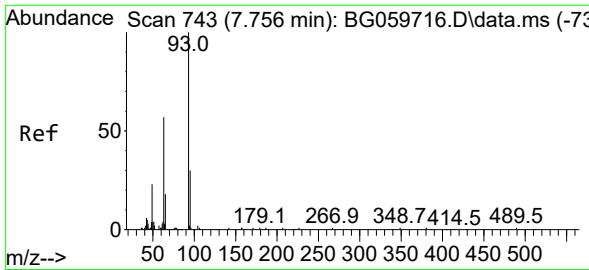


#10
 Phenol
 Concen: 10.505 ng
 RT: 7.479 min Scan# 696
 Delta R.T. -0.012 min
 Lab File: BG059830.D
 Acq: 22 Nov 2023 23:06



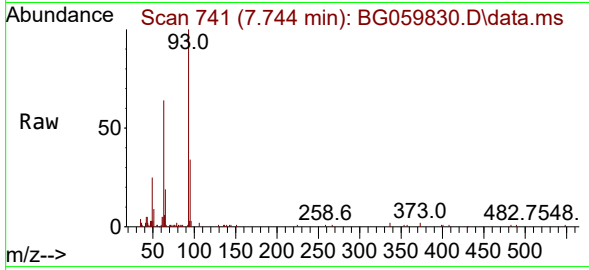
Tgt Ion: 94 Resp: 20440
 Ion Ratio Lower Upper
 94 100
 65 41.2 18.1 58.1
 66 86.7 56.6 96.6





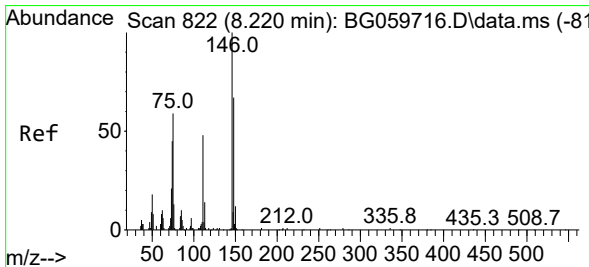
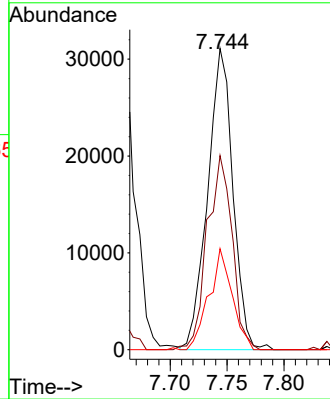
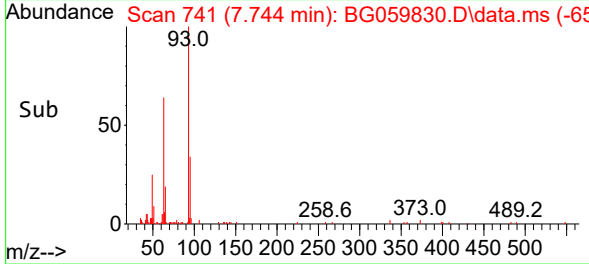
#11
 bis(2-Chloroethyl)ether
 Concen: 39.692 ng
 RT: 7.744 min Scan# 74
 Delta R.T. -0.012 min
 Lab File: BG059830.D
 Acq: 22 Nov 2023 23:06

Instrument :
 BNA_G
 ClientSampleId :
 WC-SED-01MSD

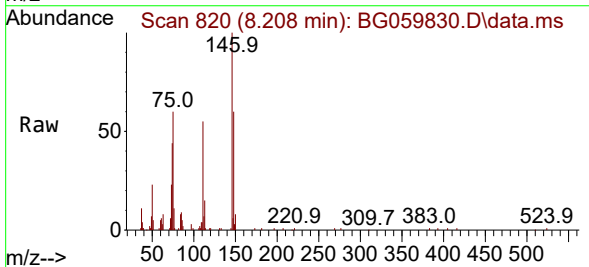


Tgt Ion: 93 Resp: 4807
 Ion Ratio Lower Upper
 93 100
 63 64.4 37.2 77.2
 95 33.5 10.2 50.2

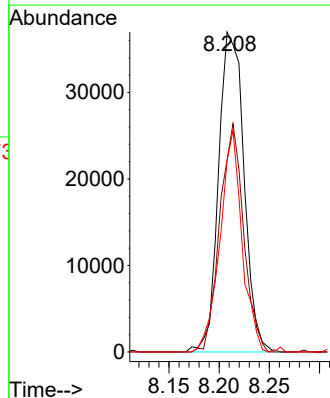
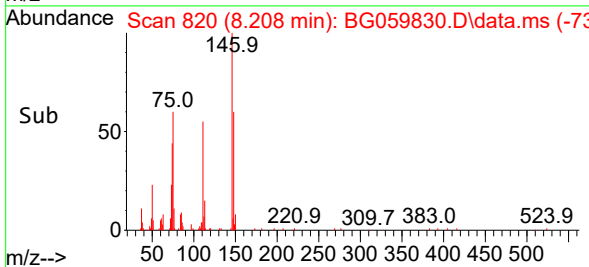
Manual Integrations
APPROVED
 Reviewed By :Yogesh Patel 11/25/2023
 Supervised By :mohammad ahmed 11/25/2023

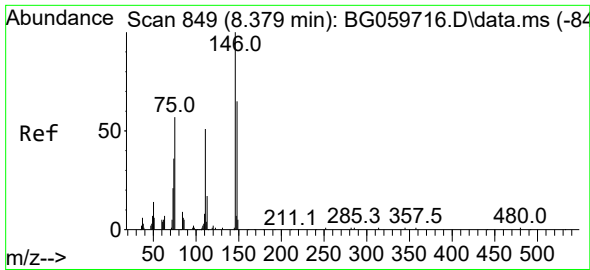


#12
 1,3-Dichlorobenzene
 Concen: 42.183 ng
 RT: 8.208 min Scan# 820
 Delta R.T. -0.012 min
 Lab File: BG059830.D
 Acq: 22 Nov 2023 23:06



Tgt Ion:146 Resp: 64756
 Ion Ratio Lower Upper
 146 100
 148 60.0 53.9 80.9
 75 59.9 47.5 71.3





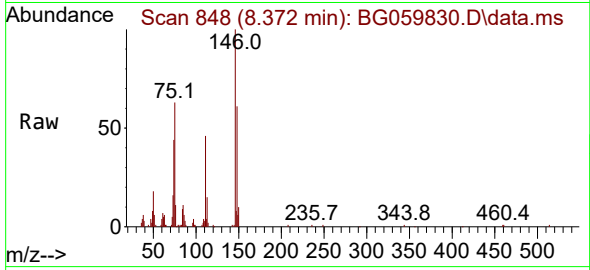
#13
 1,4-Dichlorobenzene
 Concen: 42.495 ng
 RT: 8.372 min Scan# 848
 Delta R.T. -0.006 min
 Lab File: BG059830.D
 Acq: 22 Nov 2023 23:06

Instrument :

BNA_G

ClientSampleId :

WC-SED-01MSD



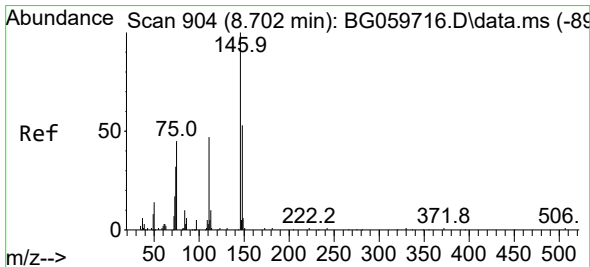
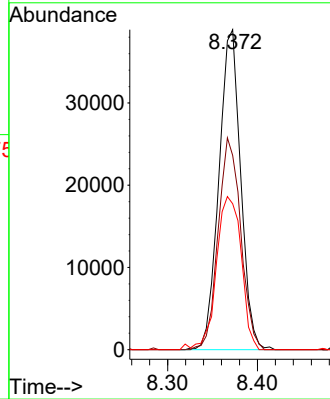
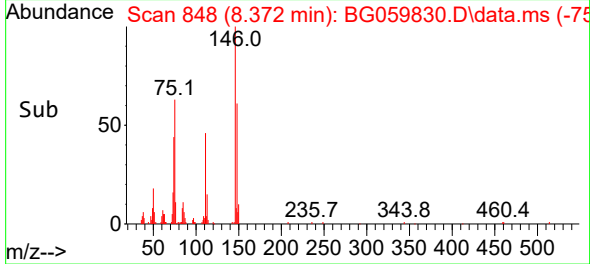
Tgt Ion:146 Resp: 65509
 Ion Ratio Lower Upper
 146 100
 148 60.7 52.3 78.5
 111 45.6 41.2 61.8

Manual Integrations

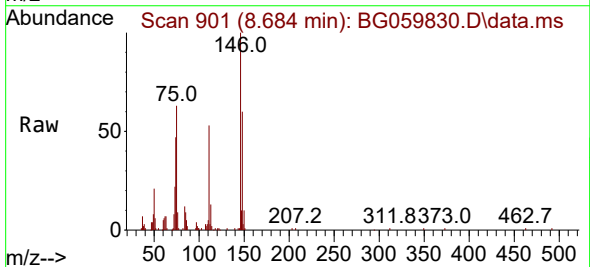
APPROVED

Reviewed By :Yogesh Patel 11/25/2023

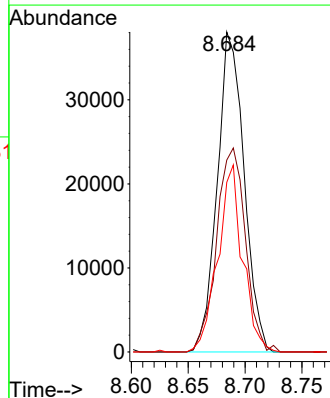
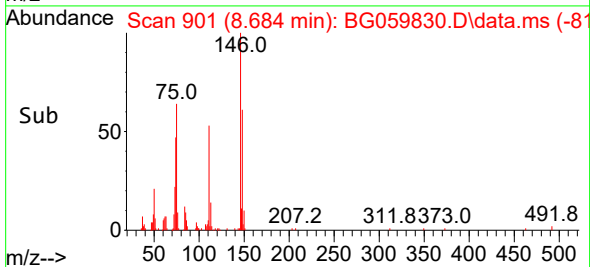
Supervised By :mohammad ahmed 11/25/2023

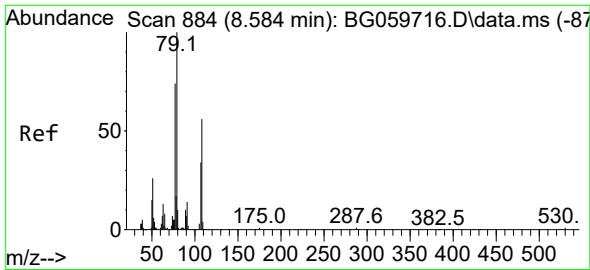


#14
 1,2-Dichlorobenzene
 Concen: 40.867 ng
 RT: 8.684 min Scan# 901
 Delta R.T. -0.018 min
 Lab File: BG059830.D
 Acq: 22 Nov 2023 23:06



Tgt Ion:146 Resp: 62591
 Ion Ratio Lower Upper
 146 100
 148 60.0 43.1 64.7
 111 53.0 38.3 57.5





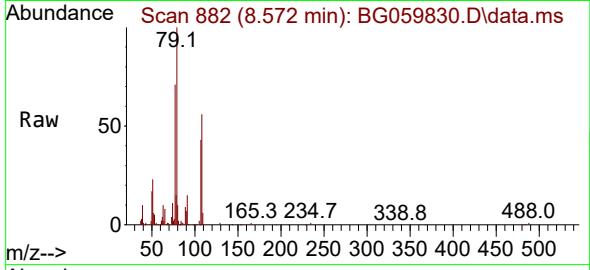
#15
 Benzyl Alcohol
 Concen: 46.459 ng
 RT: 8.572 min Scan# 882
 Delta R.T. -0.012 min
 Lab File: BG059830.D
 Acq: 22 Nov 2023 23:06

Instrument :

BNA_G

ClientSampleId :

WC-SED-01MSD



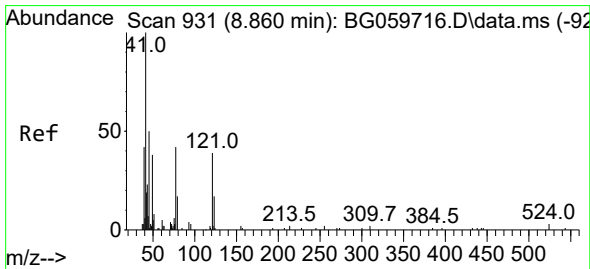
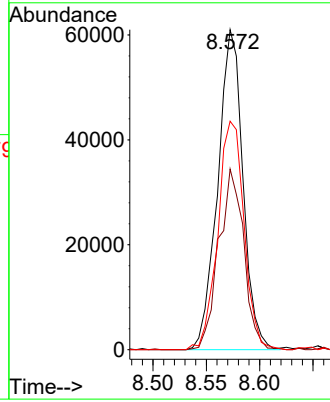
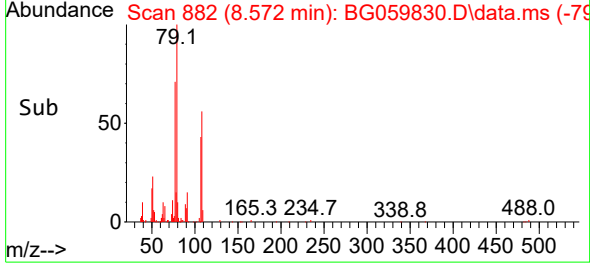
Tgt Ion: 79 Resp: 100010
 Ion Ratio Lower Upper
 79 100
 108 56.4 45.4 68.2
 77 71.4 59.4 89.2

Manual Integrations

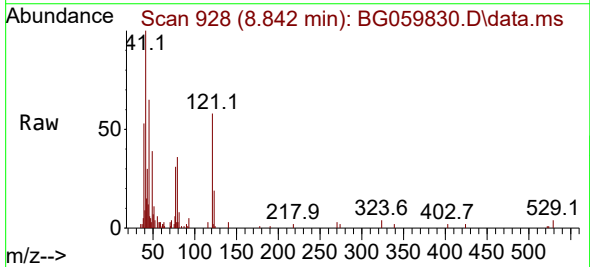
APPROVED

Reviewed By :Yogesh Patel 11/25/2023

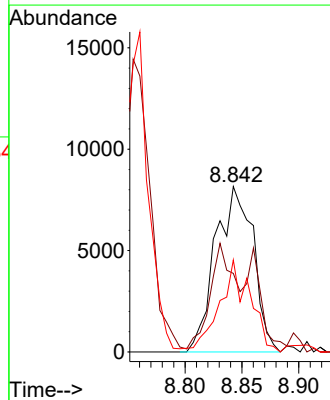
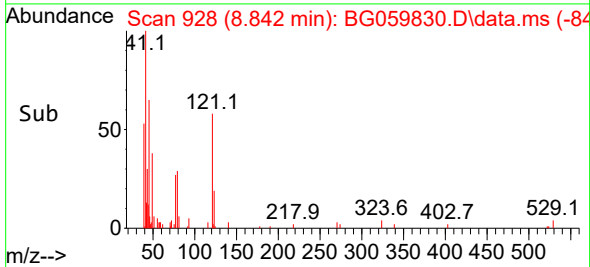
Supervised By :mohammad ahmed 11/25/2023

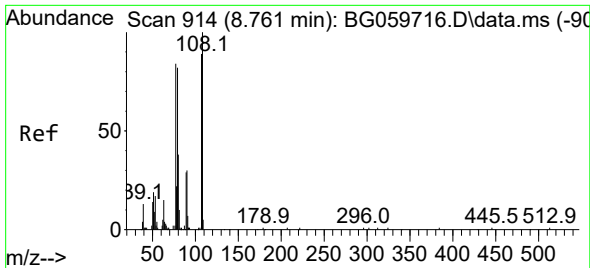


#16
 2,2'-oxybis(1-Chloropropane)
 Concen: 42.323 ng
 RT: 8.842 min Scan# 928
 Delta R.T. -0.018 min
 Lab File: BG059830.D
 Acq: 22 Nov 2023 23:06



Tgt Ion: 45 Resp: 18860
 Ion Ratio Lower Upper
 45 100
 77 47.5 63.6 103.6#
 79 55.7 19.6 59.6





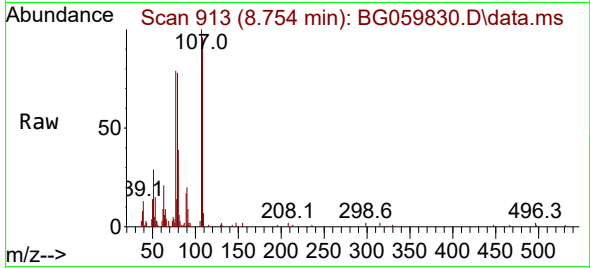
#17
 2-Methylphenol
 Concen: 20.726 ng
 RT: 8.754 min Scan# 914
 Delta R.T. -0.006 min
 Lab File: BG059830.D
 Acq: 22 Nov 2023 23:06

Instrument :

BNA_G

ClientSampleId :

WC-SED-01MSD



Tgt Ion:107 Resp: 2970

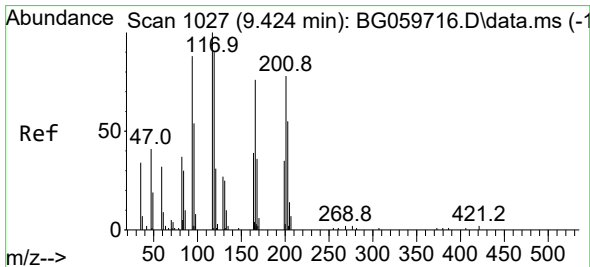
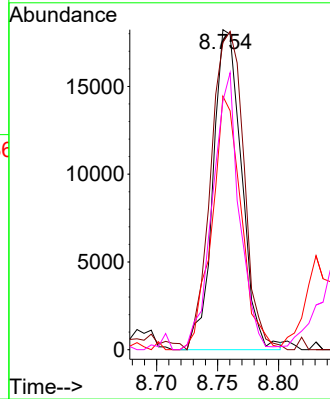
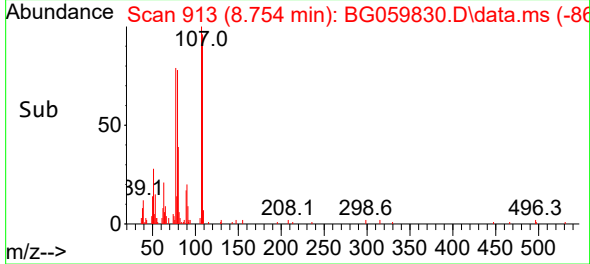
Ion	Ratio	Lower	Upper
107	100		
108	96.1	90.0	135.0
77	79.2	76.5	114.7
79	77.8	73.5	110.3

Manual Integrations

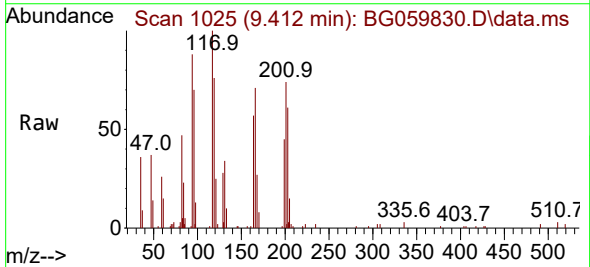
APPROVED

Reviewed By :Yogesh Patel 11/25/2023

Supervised By :mohammad ahmed 11/25/2023

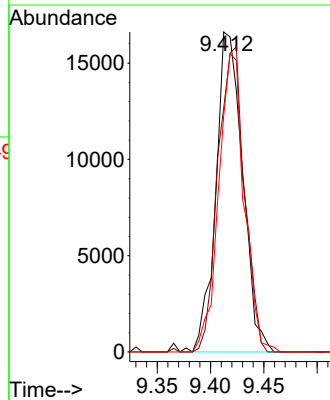
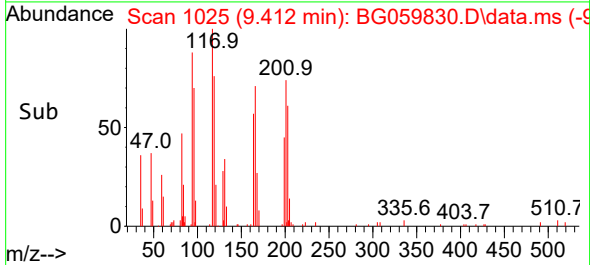


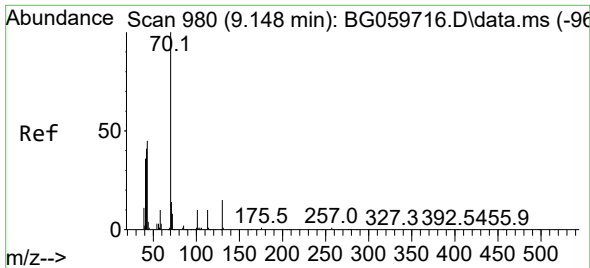
#18
 Hexachloroethane
 Concen: 44.282 ng
 RT: 9.412 min Scan# 1025
 Delta R.T. -0.012 min
 Lab File: BG059830.D
 Acq: 22 Nov 2023 23:06



Tgt Ion:117 Resp: 28974

Ion	Ratio	Lower	Upper
117	100		
119	76.2	71.8	107.8
201	76.2	62.2	93.4





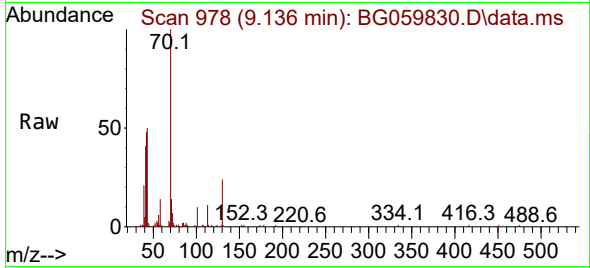
#19
 n-Nitroso-di-n-propylamine
 Concen: 43.676 ng
 RT: 9.136 min Scan# 911
 Delta R.T. -0.012 min
 Lab File: BG059830.D
 Acq: 22 Nov 2023 23:06

Instrument :

BNA_G

ClientSampleId :

WC-SED-01MSD

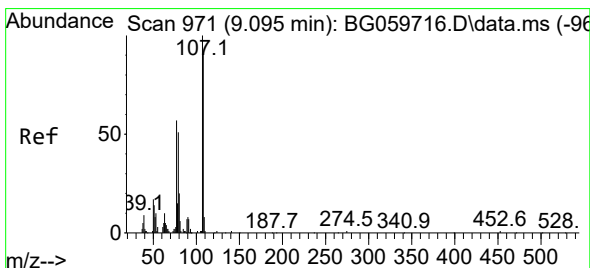
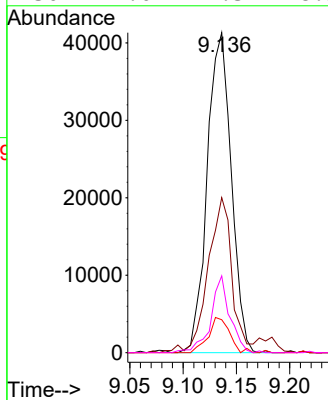
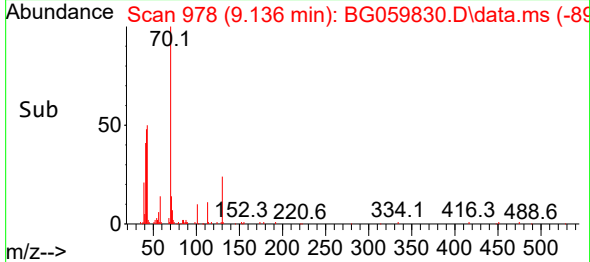


Tgt Ion: 70 Resp: 64930
 Ion Ratio Lower Upper
 70 100
 42 48.5 32.8 49.2
 101 10.3 7.7 11.5
 130 24.0 12.3 18.5#

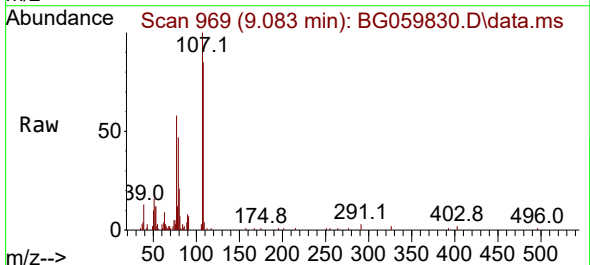
Manual Integrations

APPROVED

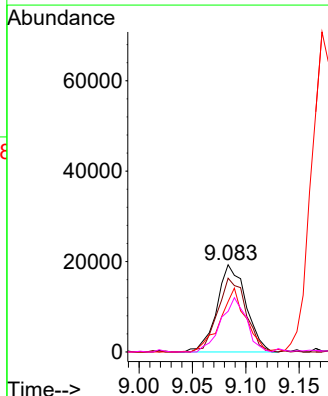
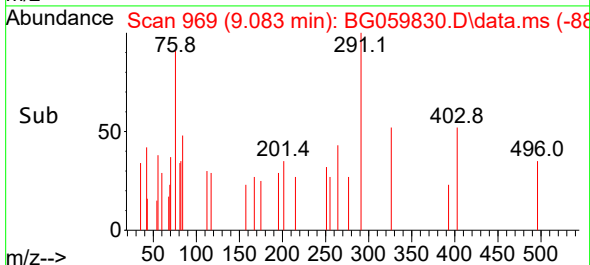
Reviewed By :Yogesh Patel 11/25/2023
 Supervised By :mohammad ahmed 11/25/2023

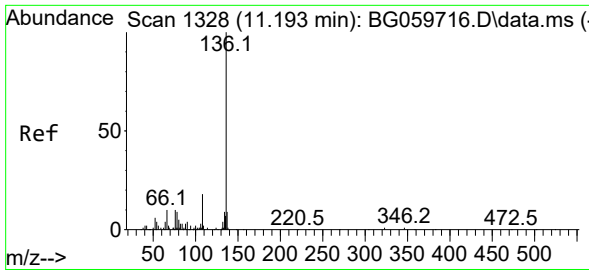


#20
 3+4-Methylphenols
 Concen: 18.314 ng
 RT: 9.083 min Scan# 969
 Delta R.T. -0.012 min
 Lab File: BG059830.D
 Acq: 22 Nov 2023 23:06



Tgt Ion:107 Resp: 36435
 Ion Ratio Lower Upper
 107 100
 108 84.6 71.1 111.1
 77 57.8 37.5 77.5
 79 46.5 30.9 70.9





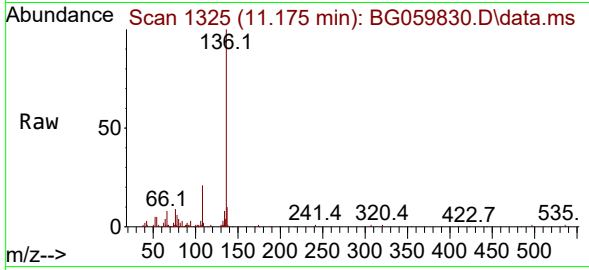
#21
 Naphthalene-d8
 Concen: 20.000 ng
 RT: 11.175 min Scan# 111
 Delta R.T. -0.018 min
 Lab File: BG059830.D
 Acq: 22 Nov 2023 23:06

Instrument :

BNA_G

ClientSampleId :

WC-SED-01MSD



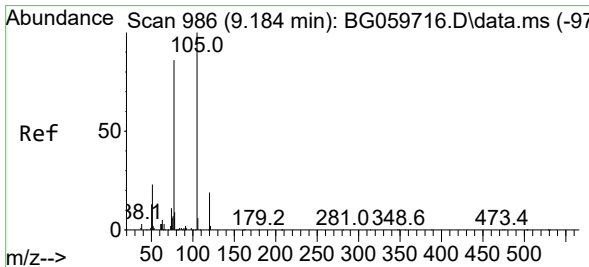
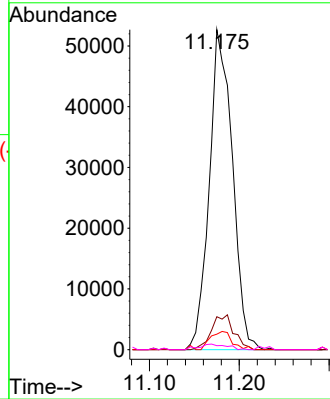
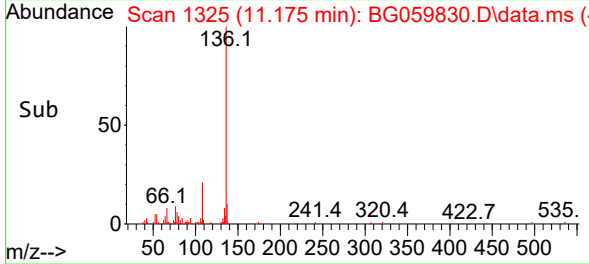
Tgt Ion:136 Resp: 94127
 Ion Ratio Lower Upper
 136 100
 137 10.3 7.4 11.0
 54 4.8 3.1 4.7
 68 1.3 1.8 2.8#

Manual Integrations

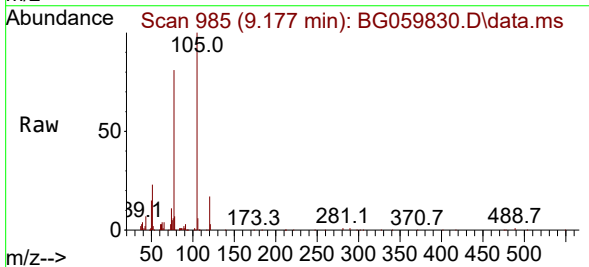
APPROVED

Reviewed By :Yogesh Patel 11/25/2023

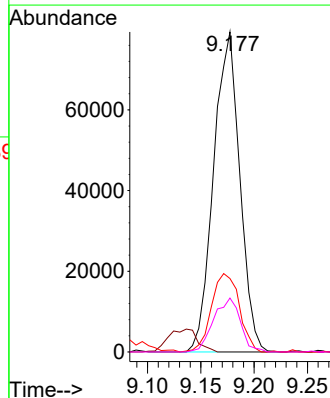
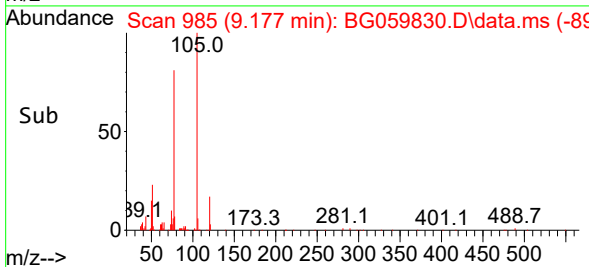
Supervised By :mohammad ahmed 11/25/2023

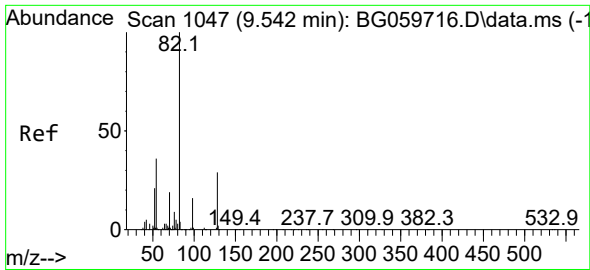


#22
 Acetophenone
 Concen: 50.851 ng
 RT: 9.177 min Scan# 985
 Delta R.T. -0.006 min
 Lab File: BG059830.D
 Acq: 22 Nov 2023 23:06



Tgt Ion:105 Resp: 135510
 Ion Ratio Lower Upper
 105 100
 71 0.0 0.0 0.0
 51 22.9 18.4 27.6
 120 16.9 15.0 22.6





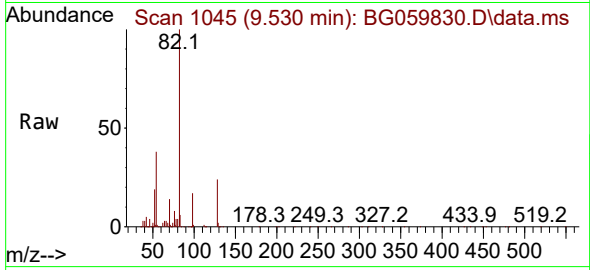
#23
 Nitrobenzene-d5
 Concen: 103.416 ng
 RT: 9.530 min Scan# 1045
 Delta R.T. -0.012 min
 Lab File: BG059830.D
 Acq: 22 Nov 2023 23:06

Instrument :

BNA_G

ClientSampleId :

WC-SED-01MSD



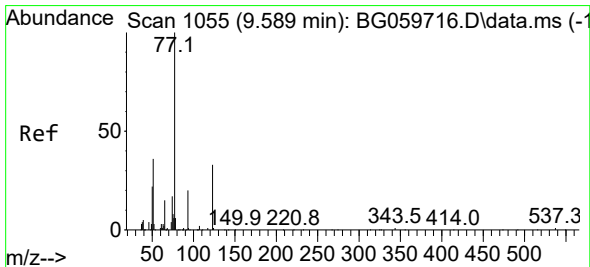
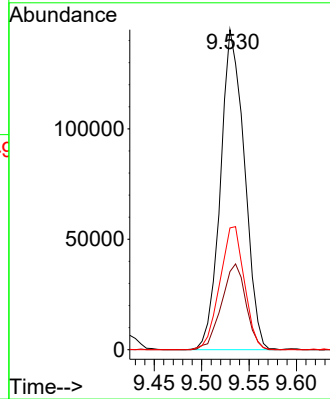
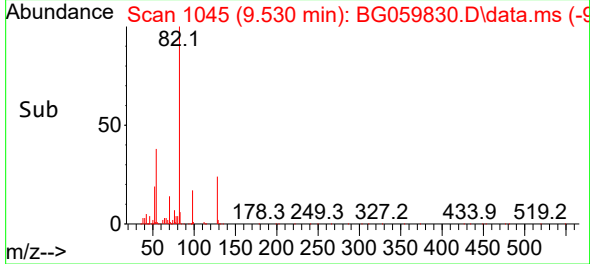
Tgt Ion: 82 Resp: 25487
 Ion Ratio Lower Upper
 82 100
 128 24.4 23.0 34.6
 54 38.1 28.7 43.1

Manual Integrations

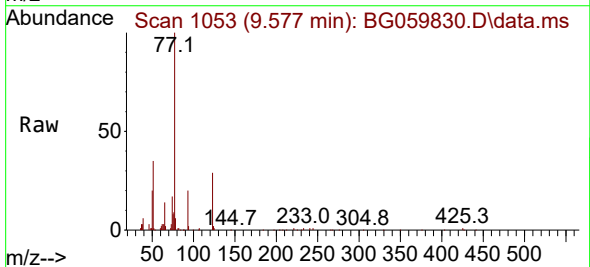
APPROVED

Reviewed By :Yogesh Patel 11/25/2023

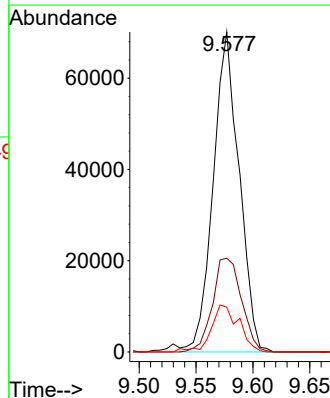
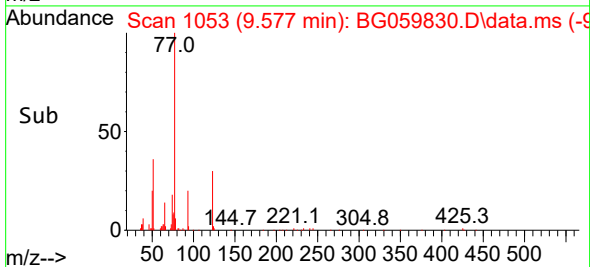
Supervised By :mohammad ahmed 11/25/2023

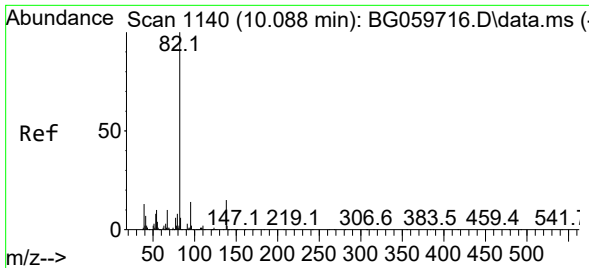


#24
 Nitrobenzene
 Concen: 48.952 ng
 RT: 9.577 min Scan# 1053
 Delta R.T. -0.012 min
 Lab File: BG059830.D
 Acq: 22 Nov 2023 23:06



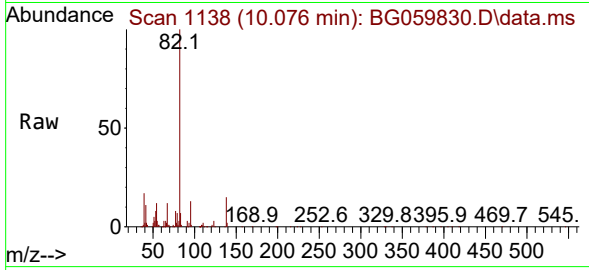
Tgt Ion: 77 Resp: 111113
 Ion Ratio Lower Upper
 77 100
 123 29.3 26.1 39.1
 65 14.0 12.1 18.1





#25
 Isophorone
 Concen: 46.170 ng
 RT: 10.076 min Scan# 1138
 Delta R.T. -0.012 min
 Lab File: BG059830.D
 Acq: 22 Nov 2023 23:06

Instrument : BNA_G
 ClientSampleId : WC-SED-01MSD

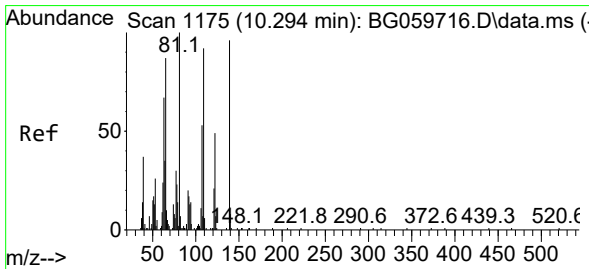
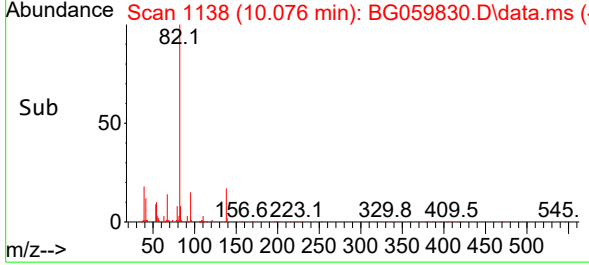
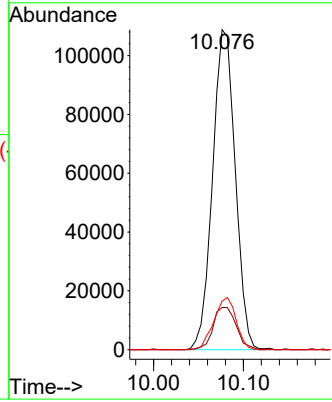


Tgt Ion: 82 Resp: 19103

Ion	Ratio	Lower	Upper
82	100		
95	13.2	11.4	17.0
138	15.2	12.1	18.1

Manual Integrations
APPROVED

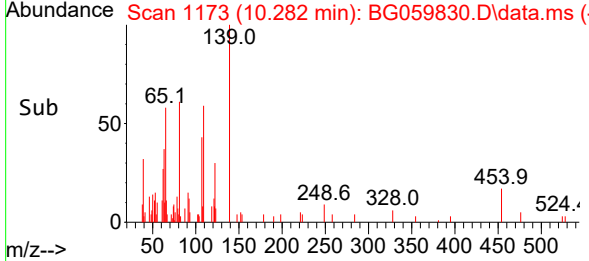
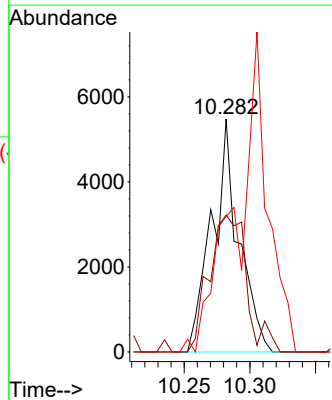
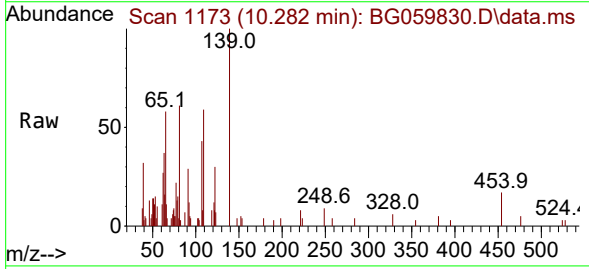
Reviewed By :Yogesh Patel 11/25/2023
 Supervised By :mohammad ahmed 11/25/2023

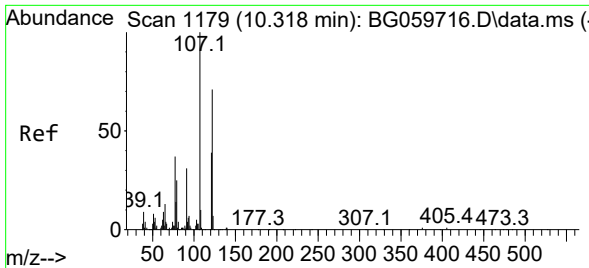


#26
 2-Nitrophenol
 Concen: 9.319 ng
 RT: 10.282 min Scan# 1173
 Delta R.T. -0.012 min
 Lab File: BG059830.D
 Acq: 22 Nov 2023 23:06

Tgt Ion:139 Resp: 7755

Ion	Ratio	Lower	Upper
139	100		
109	58.8	76.7	115.1#
65	58.1	72.1	108.1#





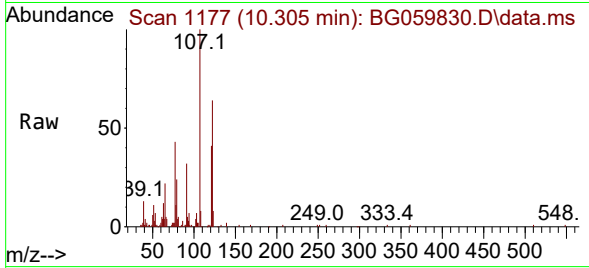
#27
 2,4-Dimethylphenol
 Concen: 22.626 ng
 RT: 10.305 min Scan# 1177
 Delta R.T. -0.012 min
 Lab File: BG059830.D
 Acq: 22 Nov 2023 23:06

Instrument :

BNA_G

ClientSampleId :

WC-SED-01MSD



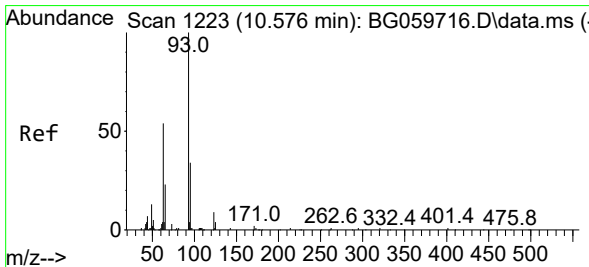
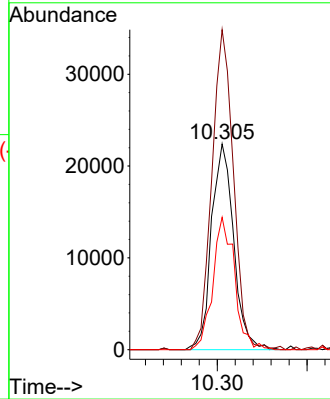
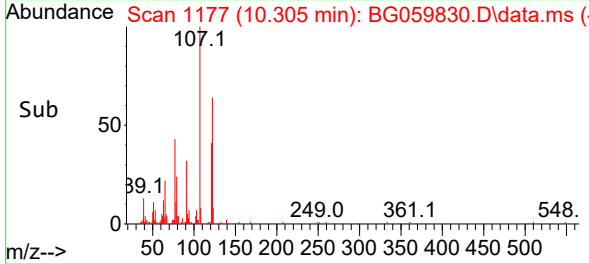
Tgt Ion:122 Resp: 3828
 Ion Ratio Lower Upper
 122 100
 107 155.6 112.1 168.1
 121 64.3 43.2 64.8

Manual Integrations

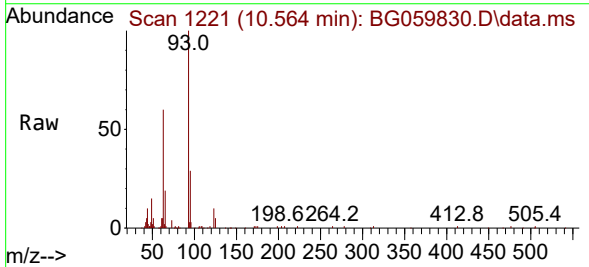
APPROVED

Reviewed By :Yogesh Patel 11/25/2023

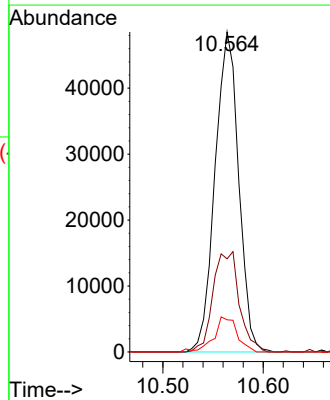
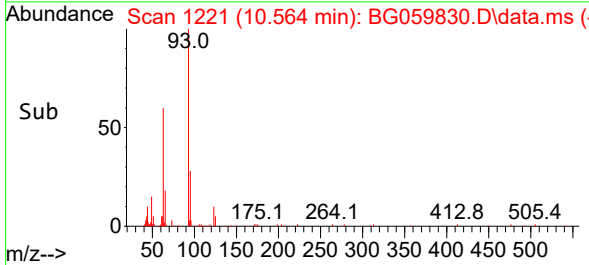
Supervised By :mohammad ahmed 11/25/2023

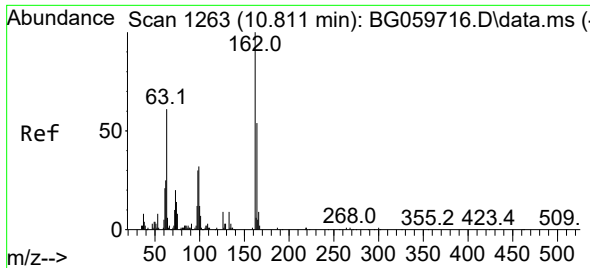


#28
 bis(2-Chloroethoxy)methane
 Concen: 50.913 ng
 RT: 10.564 min Scan# 1221
 Delta R.T. -0.012 min
 Lab File: BG059830.D
 Acq: 22 Nov 2023 23:06



Tgt Ion: 93 Resp: 79161
 Ion Ratio Lower Upper
 93 100
 95 29.1 27.0 40.6
 123 10.1 7.6 11.4





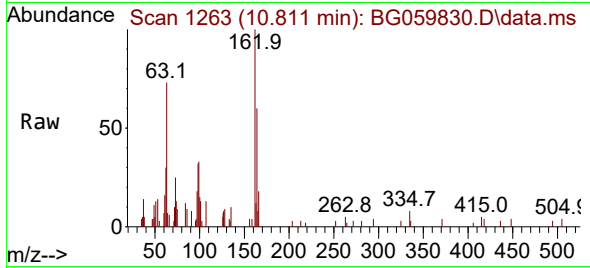
#29
 2,4-Dichlorophenol
 Concen: 8.519 ng
 RT: 10.811 min Scan# 1263
 Delta R.T. -0.000 min
 Lab File: BG059830.D
 Acq: 22 Nov 2023 23:06

Instrument :

BNA_G

ClientSampleId :

WC-SED-01MSD



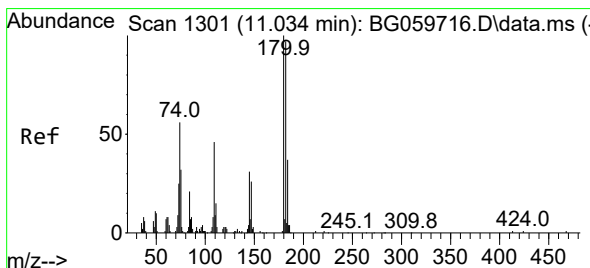
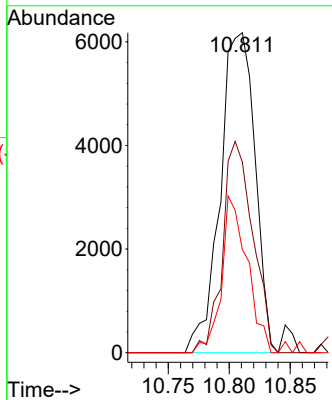
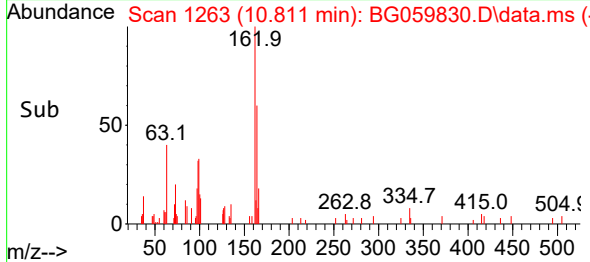
Tgt Ion:162 Resp: 1230
 Ion Ratio Lower Upper
 162 100
 164 59.5 33.6 73.6
 98 32.2 10.7 50.7

Manual Integrations

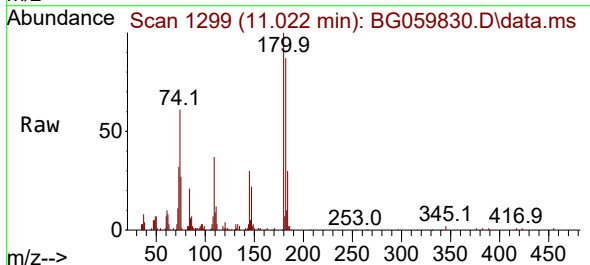
APPROVED

Reviewed By :Yogesh Patel 11/25/2023

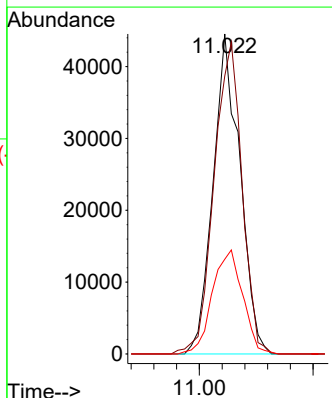
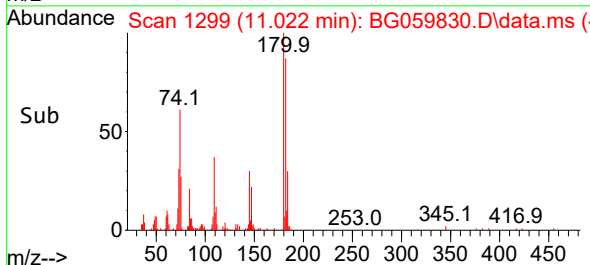
Supervised By :mohammad ahmed 11/25/2023

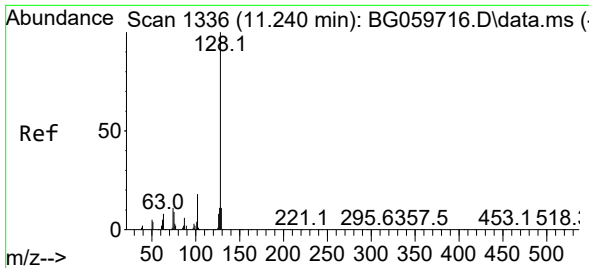


#30
 1,2,4-Trichlorobenzene
 Concen: 49.946 ng
 RT: 11.022 min Scan# 1299
 Delta R.T. -0.012 min
 Lab File: BG059830.D
 Acq: 22 Nov 2023 23:06



Tgt Ion:180 Resp: 72919
 Ion Ratio Lower Upper
 180 100
 182 86.9 77.4 116.2
 145 29.6 24.4 36.6





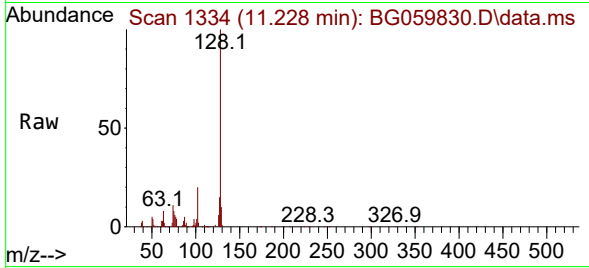
#31
 Naphthalene
 Concen: 49.107 ng
 RT: 11.228 min Scan# 1334
 Delta R.T. -0.012 min
 Lab File: BG059830.D
 Acq: 22 Nov 2023 23:06

Instrument :

BNA_G

ClientSampleId :

WC-SED-01MSD



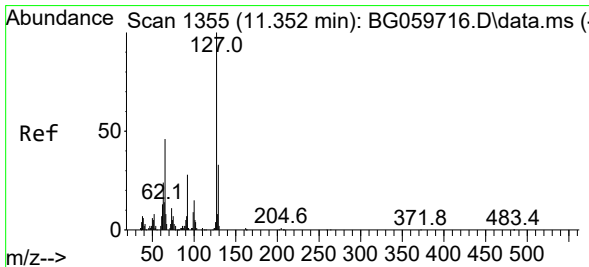
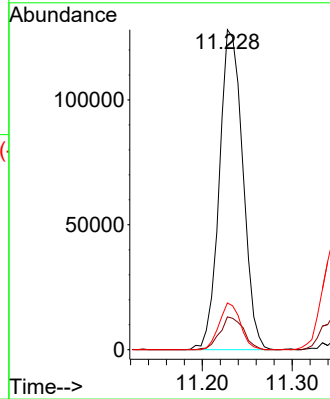
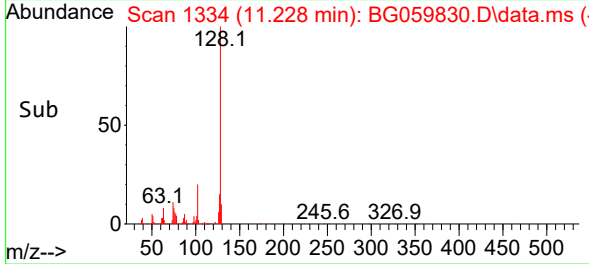
Tgt Ion:128 Resp: 232428
 Ion Ratio Lower Upper
 128 100
 129 10.2 8.7 13.1
 127 14.6 9.2 13.8

Manual Integrations

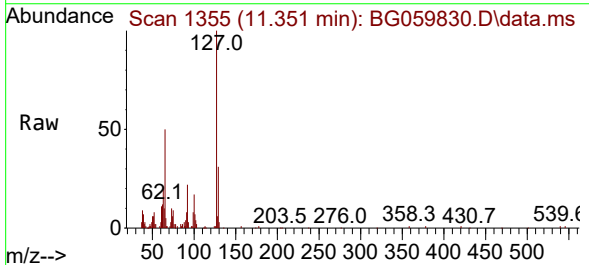
APPROVED

Reviewed By :Yogesh Patel 11/25/2023

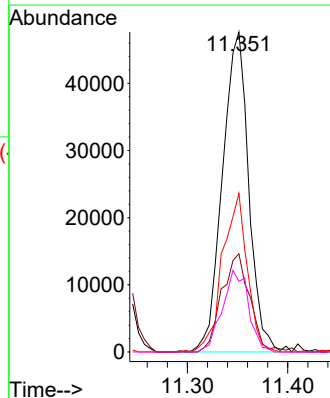
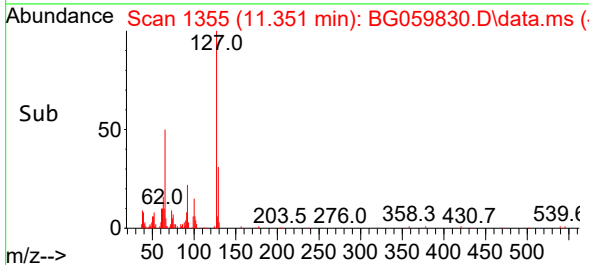
Supervised By :mohammad ahmed 11/25/2023

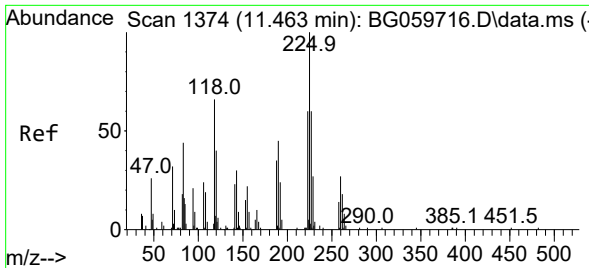


#33
 4-Chloroaniline
 Concen: 42.893 ng
 RT: 11.351 min Scan# 1355
 Delta R.T. -0.000 min
 Lab File: BG059830.D
 Acq: 22 Nov 2023 23:06



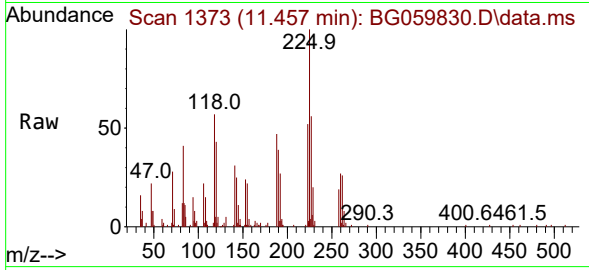
Tgt Ion:127 Resp: 86351
 Ion Ratio Lower Upper
 127 100
 129 30.7 26.8 40.2
 65 49.6 36.5 54.7
 92 22.1 22.1 33.1#





#34
 Hexachlorobutadiene
 Concen: 52.971 ng
 RT: 11.457 min Scan# 11
 Delta R.T. -0.006 min
 Lab File: BG059830.D
 Acq: 22 Nov 2023 23:06

Instrument : BNA_G
 ClientSampleId : WC-SED-01MSD

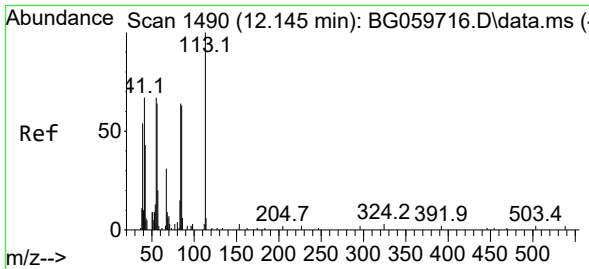
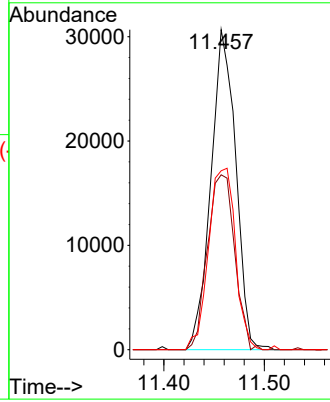
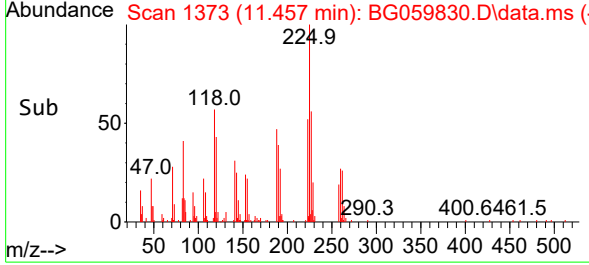


Tgt Ion: 225 Resp: 5263

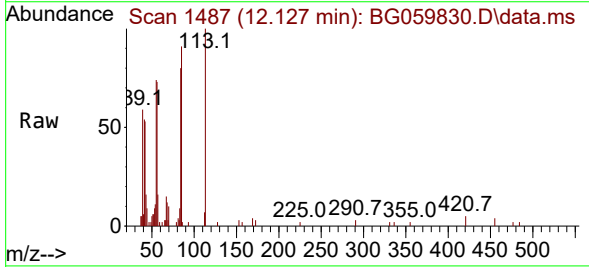
Ion	Ratio	Lower	Upper
225	100		
223	54.6	46.6	69.8
227	55.9	48.2	72.2

Manual Integrations
 APPROVED

Reviewed By :Yogesh Patel 11/25/2023
 Supervised By :mohammad ahmed 11/25/2023

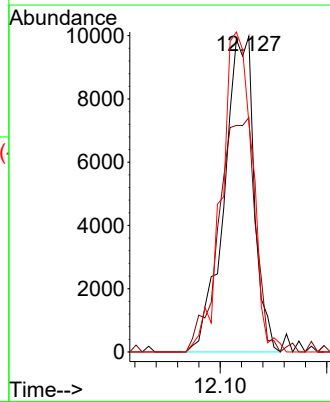
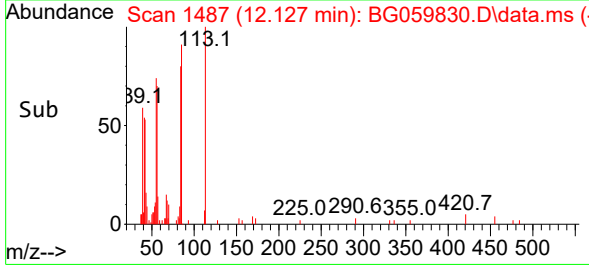


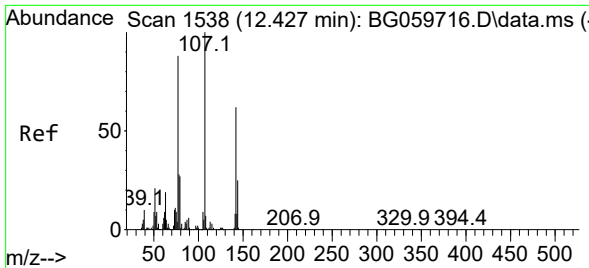
#35
 Caprolactam
 Concen: 37.003 ng
 RT: 12.127 min Scan# 1487
 Delta R.T. -0.018 min
 Lab File: BG059830.D
 Acq: 22 Nov 2023 23:06



Tgt Ion: 113 Resp: 19536

Ion	Ratio	Lower	Upper
113	100		
55	74.2	47.1	87.1
56	72.7	43.7	83.7





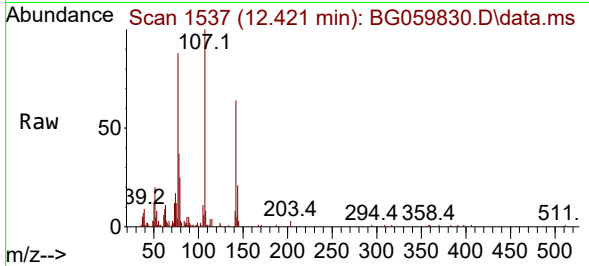
#36
 4-Chloro-3-methylphenol
 Concen: 23.514 ng
 RT: 12.421 min Scan# 11
 Delta R.T. -0.006 min
 Lab File: BG059830.D
 Acq: 22 Nov 2023 23:06

Instrument :

BNA_G

ClientSampleId :

WC-SED-01MSD



Tgt Ion:107 Resp: 4517

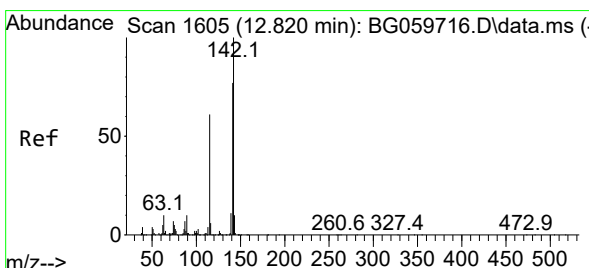
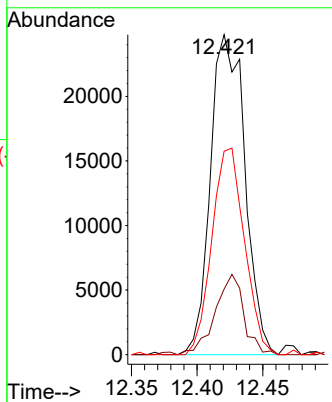
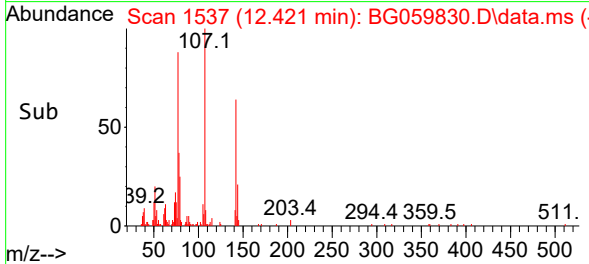
Ion	Ratio	Lower	Upper
107	100		
144	20.5	20.2	30.4
142	63.6	49.4	74.0

Manual Integrations

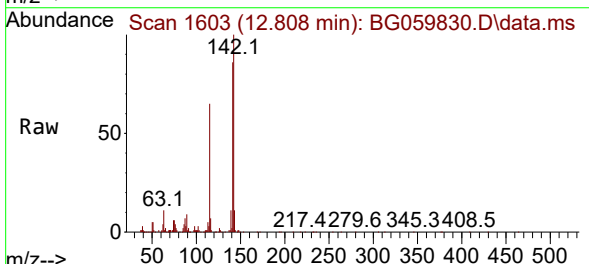
APPROVED

Reviewed By :Yogesh Patel 11/25/2023

Supervised By :mohammad ahmed 11/25/2023

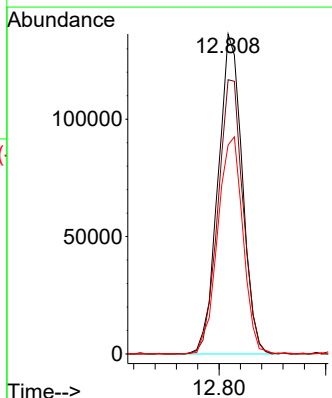
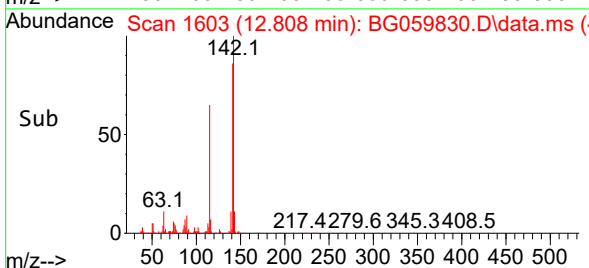


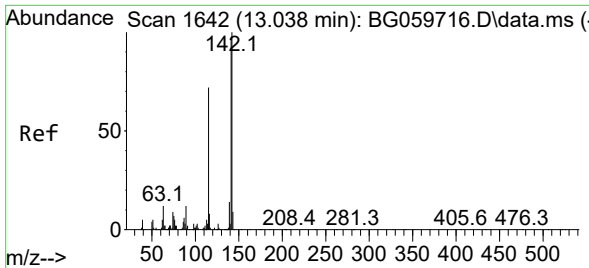
#37
 2-Methylnaphthalene
 Concen: 53.920 ng
 RT: 12.808 min Scan# 1603
 Delta R.T. -0.012 min
 Lab File: BG059830.D
 Acq: 22 Nov 2023 23:06



Tgt Ion:142 Resp: 214944

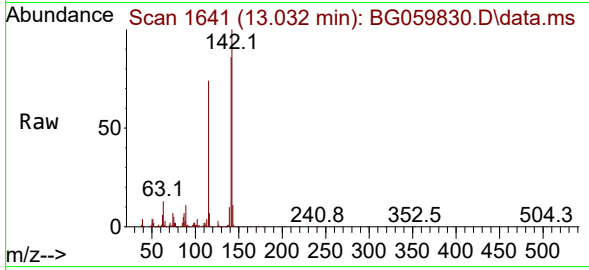
Ion	Ratio	Lower	Upper
142	100		
141	85.7	61.9	92.9
115	65.3	49.0	73.4





#38
 1-Methylnaphthalene
 Concen: 49.435 ng
 RT: 13.032 min Scan# 10
 Delta R.T. -0.006 min
 Lab File: BG059830.D
 Acq: 22 Nov 2023 23:06

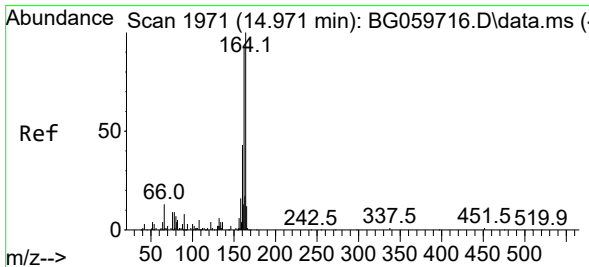
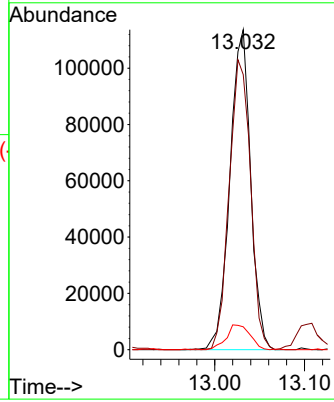
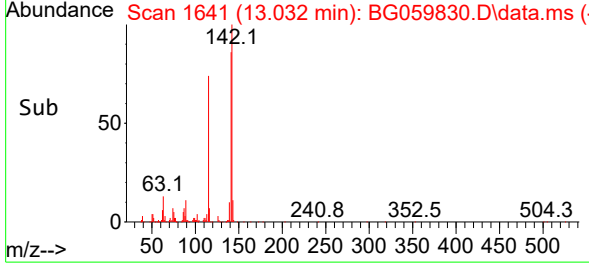
Instrument : BNA_G
 ClientSampleId : WC-SED-01MSD



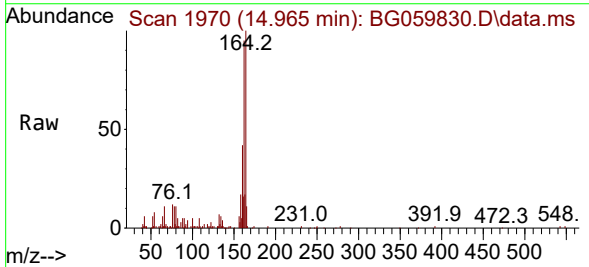
Tgt Ion:142 Resp: 18173
 Ion Ratio Lower Upper
 142 100
 141 85.9 77.8 116.8
 116 7.1 6.2 9.2

Manual Integrations
 APPROVED

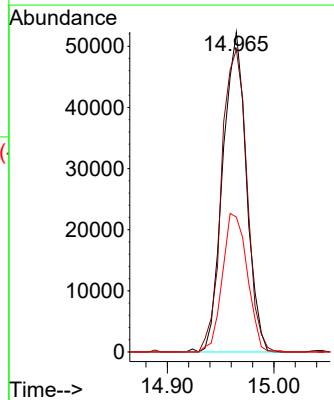
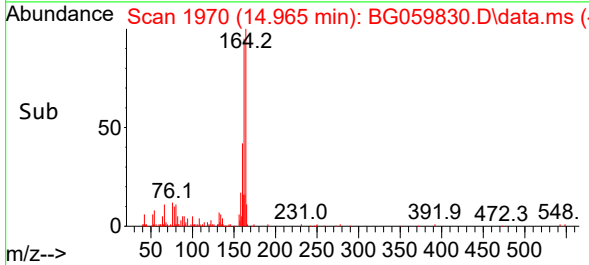
Reviewed By :Yogesh Patel 11/25/2023
 Supervised By :mohammad ahmed 11/25/2023

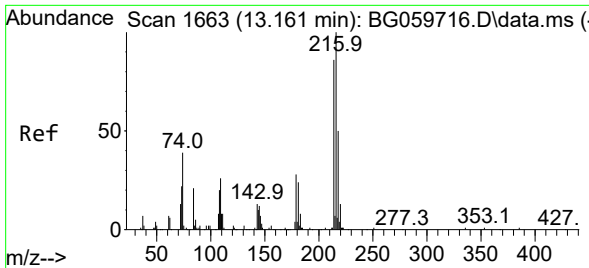


#39
 Acenaphthene-d10
 Concen: 20.000 ng
 RT: 14.965 min Scan# 1970
 Delta R.T. -0.006 min
 Lab File: BG059830.D
 Acq: 22 Nov 2023 23:06



Tgt Ion:164 Resp: 80194
 Ion Ratio Lower Upper
 164 100
 162 94.6 73.3 109.9
 160 42.1 34.1 51.1





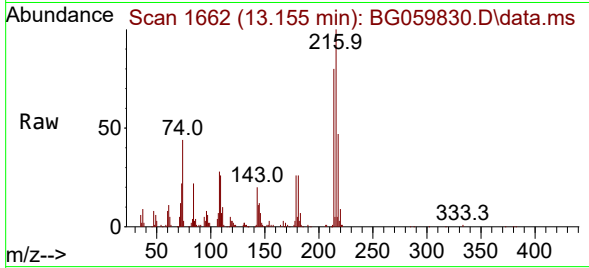
#40
 1,2,4,5-Tetrachlorobenzene
 Concen: 44.862 ng
 RT: 13.155 min Scan# 1662
 Delta R.T. -0.006 min
 Lab File: BG059830.D
 Acq: 22 Nov 2023 23:06

Instrument :

BNA_G

ClientSampleId :

WC-SED-01MSD



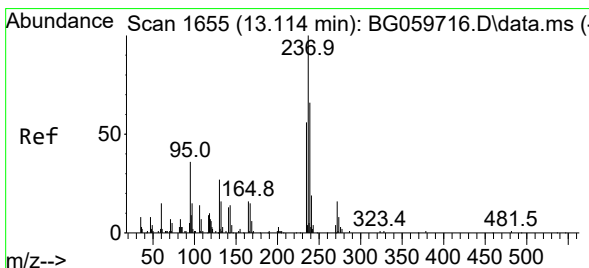
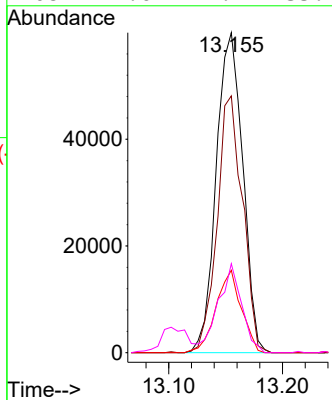
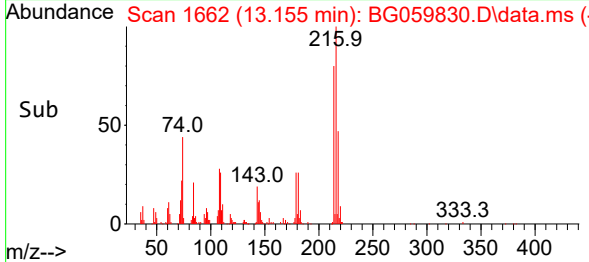
Tgt Ion	Resp	Lower	Upper
216	100		
214	77.0	61.0	91.4
179	24.7	20.2	30.2
108	24.6	22.2	33.2

Manual Integrations

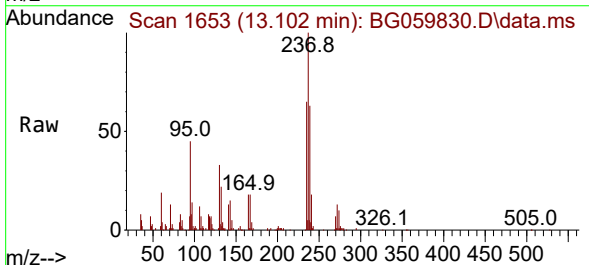
APPROVED

Reviewed By :Yogesh Patel 11/25/2023

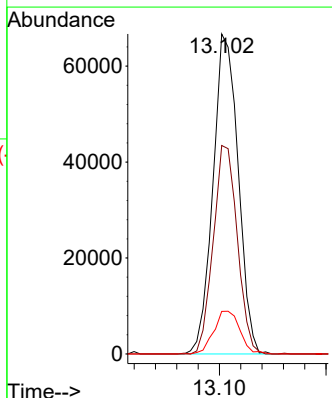
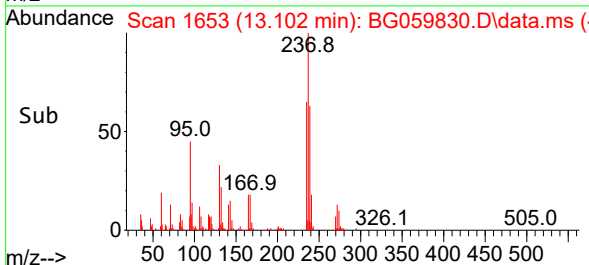
Supervised By :mohammad ahmed 11/25/2023

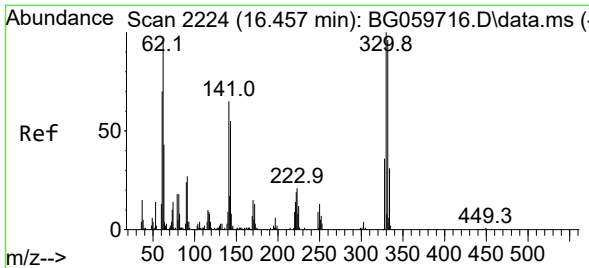


#41
 Hexachlorocyclopentadiene
 Concen: 80.369 ng
 RT: 13.102 min Scan# 1653
 Delta R.T. -0.012 min
 Lab File: BG059830.D
 Acq: 22 Nov 2023 23:06



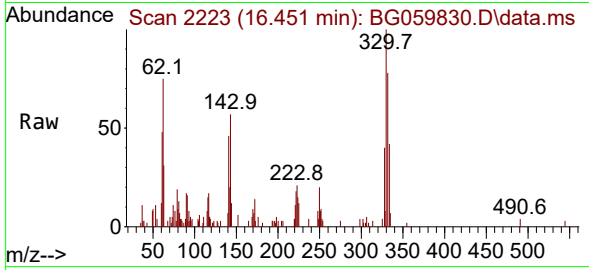
Tgt Ion	Resp	Lower	Upper
237	100		
235	65.1	36.0	76.0
272	13.3	0.0	36.5





#42
 2,4,6-Tribromophenol
 Concen: 13.252 ng
 RT: 16.451 min Scan# 21
 Delta R.T. -0.006 min
 Lab File: BG059830.D
 Acq: 22 Nov 2023 23:06

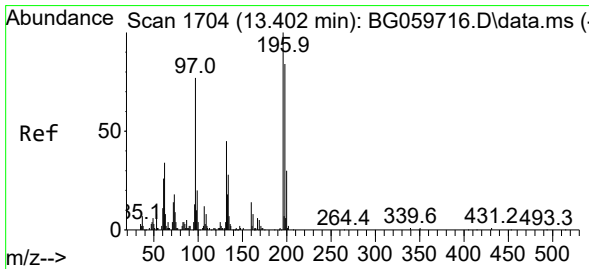
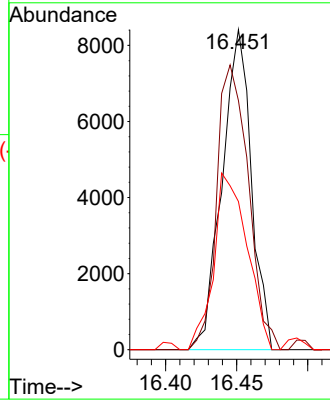
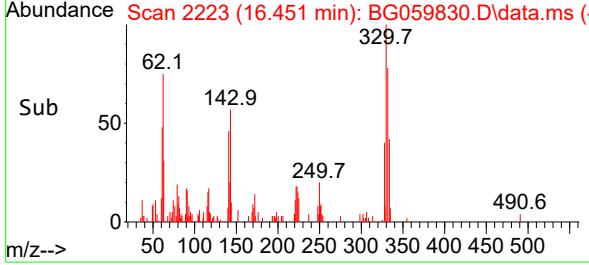
Instrument : BNA_G
 ClientSampleId : WC-SED-01MSD



Tgt Ion: 330 Resp: 1205
 Ion Ratio Lower Upper
 330 100
 332 96.0 73.3 109.9
 141 62.8 52.1 78.1

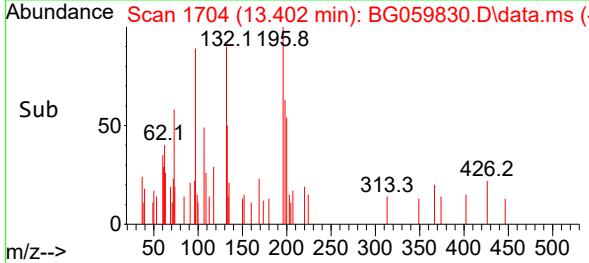
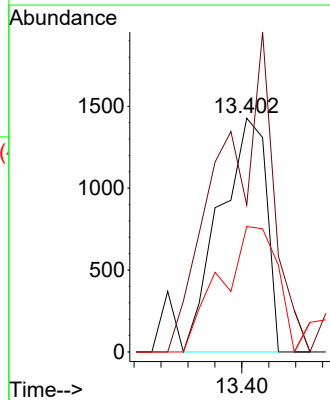
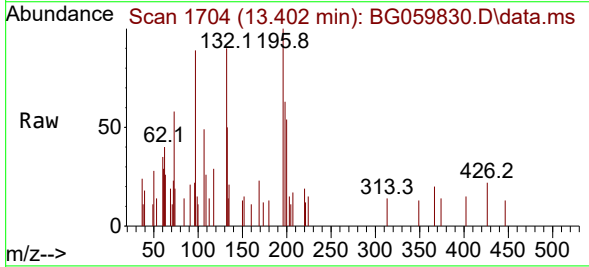
Manual Integrations
 APPROVED

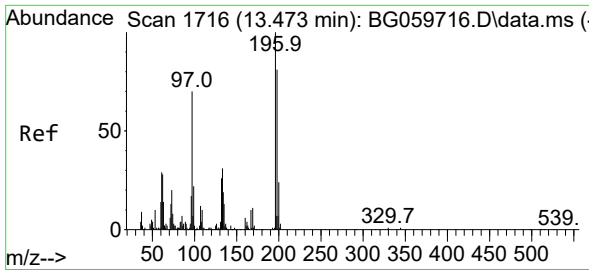
Reviewed By :Yogesh Patel 11/25/2023
 Supervised By :mohammad ahmed 11/25/2023



#43
 2,4,6-Trichlorophenol
 Concen: 1.133 ng m
 RT: 13.402 min Scan# 1704
 Delta R.T. -0.000 min
 Lab File: BG059830.D
 Acq: 22 Nov 2023 23:06

Tgt Ion: 196 Resp: 1707
 Ion Ratio Lower Upper
 196 100
 198 62.9 67.6 101.4#
 200 53.7 24.4 36.6#





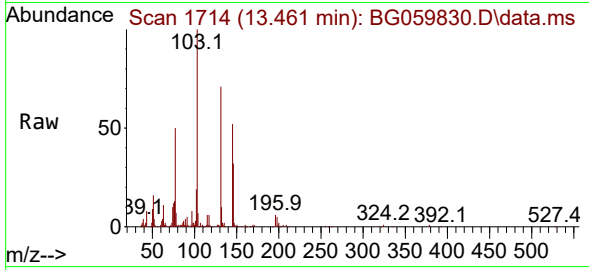
#44
 2,4,5-Trichlorophenol
 Concen: 3.839 ng
 RT: 13.461 min Scan# 1714
 Delta R.T. -0.012 min
 Lab File: BG059830.D
 Acq: 22 Nov 2023 23:06

Instrument :

BNA_G

ClientSampleId :

WC-SED-01MSD



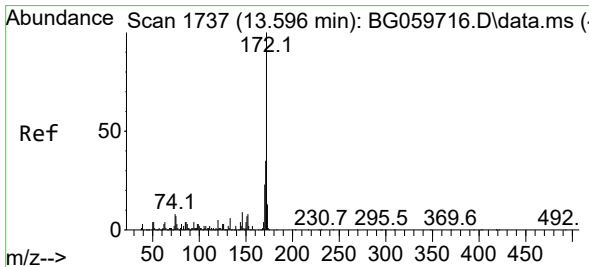
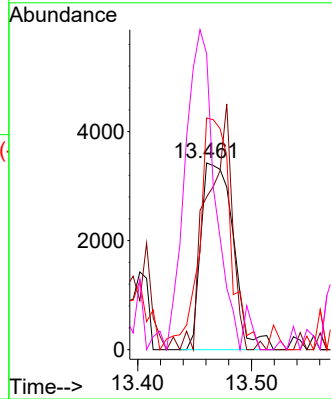
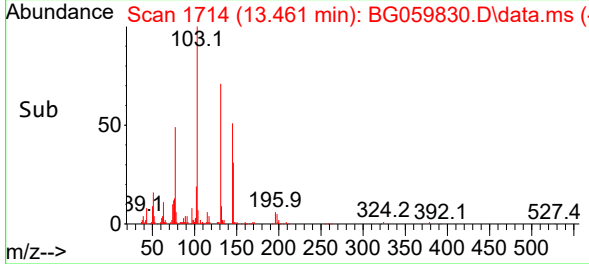
Tgt Ion:196 Resp: 679
 Ion Ratio Lower Upper
 196 100
 198 81.8 66.7 100.1
 97 124.0 55.9 83.9
 132 158.5 20.4 30.6#

Manual Integrations

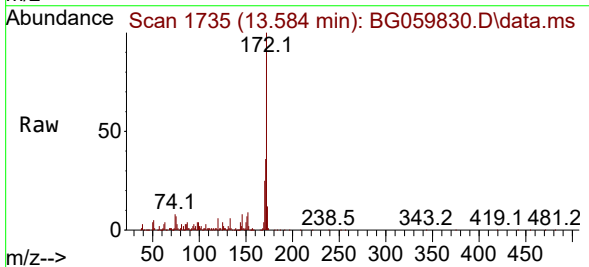
APPROVED

Reviewed By :Yogesh Patel 11/25/2023

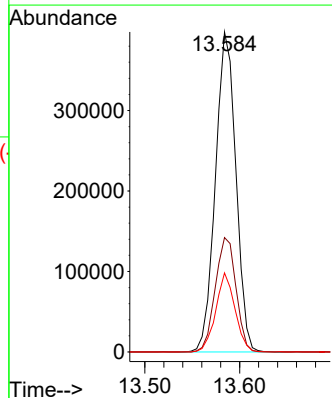
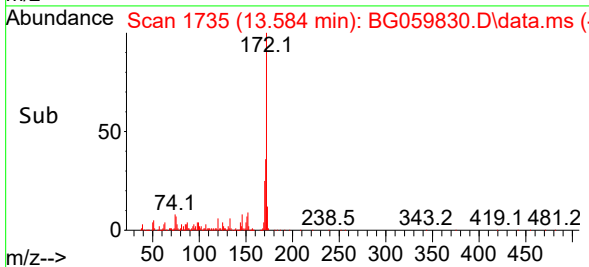
Supervised By :mohammad ahmed 11/25/2023

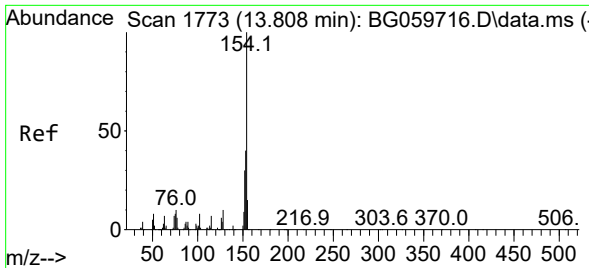


#45
 2-Fluorobiphenyl
 Concen: 100.050 ng
 RT: 13.584 min Scan# 1735
 Delta R.T. -0.012 min
 Lab File: BG059830.D
 Acq: 22 Nov 2023 23:06



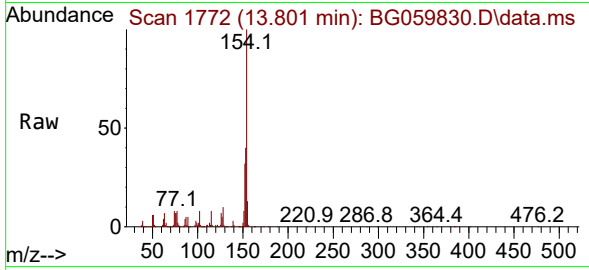
Tgt Ion:172 Resp: 596073
 Ion Ratio Lower Upper
 172 100
 171 35.8 27.7 41.5
 170 24.7 18.4 27.6





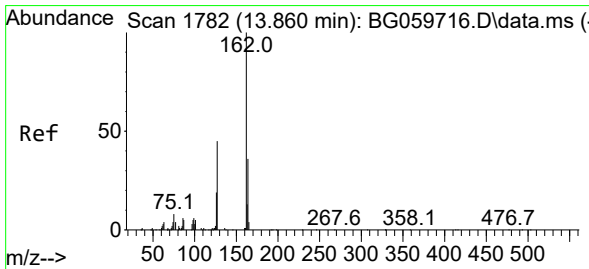
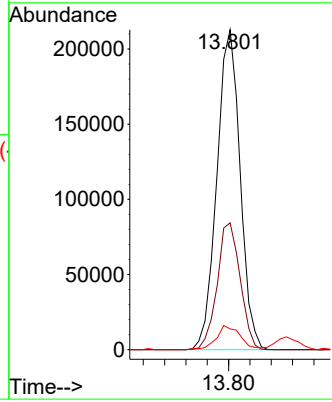
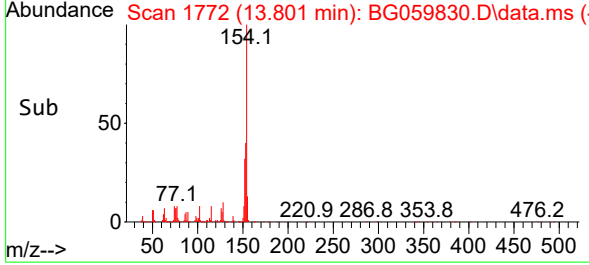
#46
 1,1'-Biphenyl
 Concen: 51.049 ng
 RT: 13.801 min Scan# 1772
 Delta R.T. -0.006 min
 Lab File: BG059830.D
 Acq: 22 Nov 2023 23:06

Instrument : BNA_G
 Client Sample Id : WC-SED-01MSD

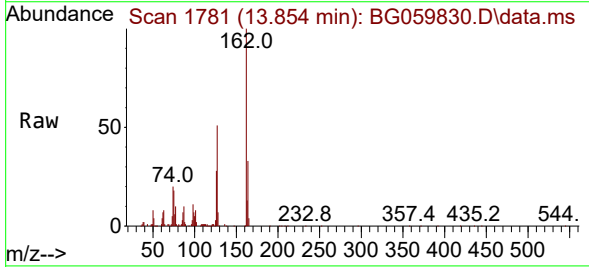


Tgt Ion: 154 Resp: 32133
 Ion Ratio Lower Upper
 154 100
 153 39.6 19.7 59.7
 76 6.5 0.0 30.4

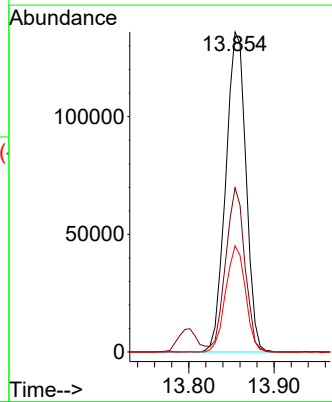
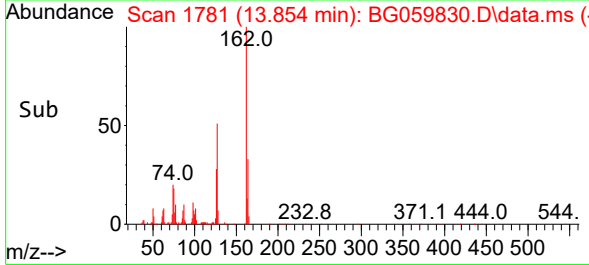
Manual Integrations
APPROVED
 Reviewed By :Yogesh Patel 11/25/2023
 Supervised By :mohammad ahmed 11/25/2023

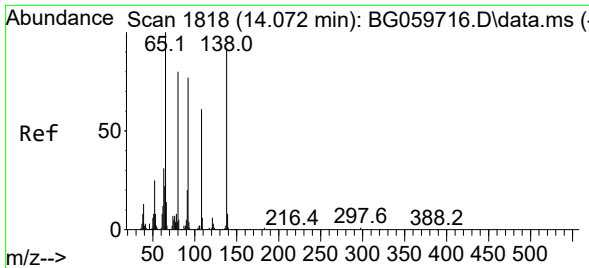


#47
 2-Chloronaphthalene
 Concen: 51.752 ng
 RT: 13.854 min Scan# 1781
 Delta R.T. -0.006 min
 Lab File: BG059830.D
 Acq: 22 Nov 2023 23:06



Tgt Ion: 162 Resp: 223833
 Ion Ratio Lower Upper
 162 100
 127 51.3 41.0 61.6
 164 33.2 28.9 43.3





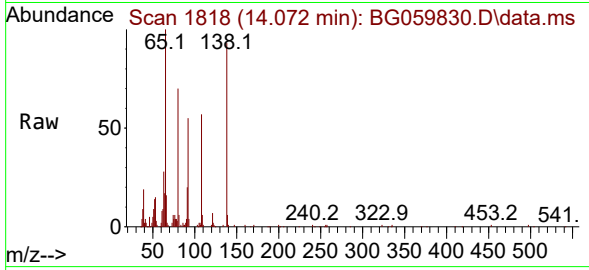
#48
 2-Nitroaniline
 Concen: 61.457 ng
 RT: 14.072 min Scan# 1818
 Delta R.T. -0.000 min
 Lab File: BG059830.D
 Acq: 22 Nov 2023 23:06

Instrument :

BNA_G

ClientSampleId :

WC-SED-01MSD



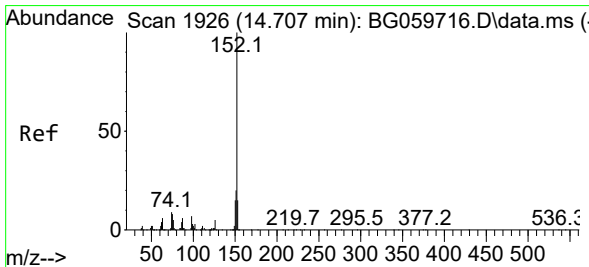
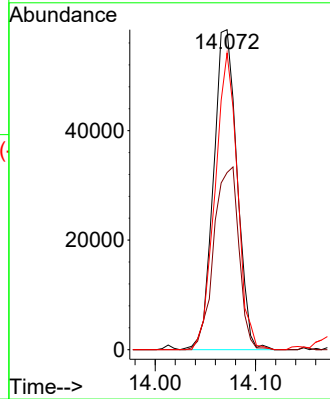
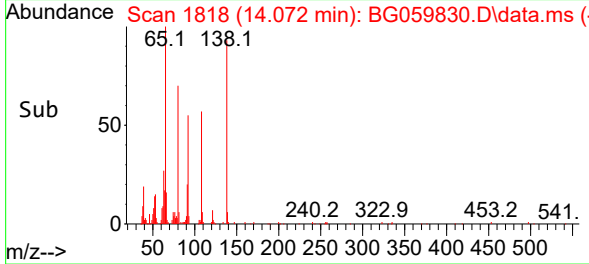
Tgt Ion: 65 Resp: 94902
 Ion Ratio Lower Upper
 65 100
 92 55.3 61.2 91.8
 138 92.7 73.8 110.6

Manual Integrations

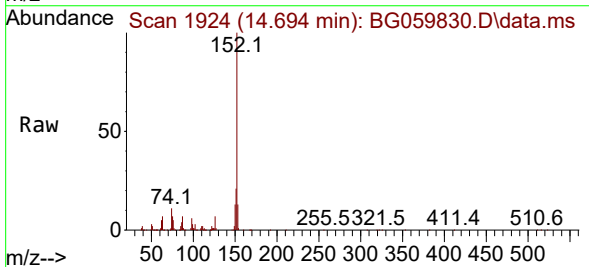
APPROVED

Reviewed By :Yogesh Patel 11/25/2023

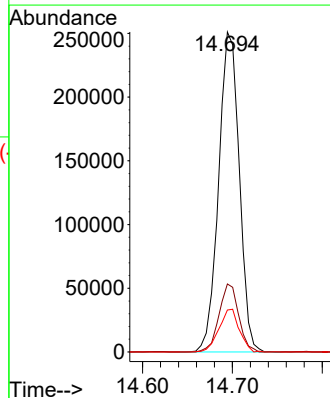
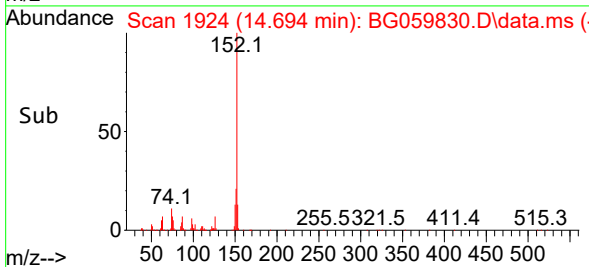
Supervised By :mohammad ahmed 11/25/2023

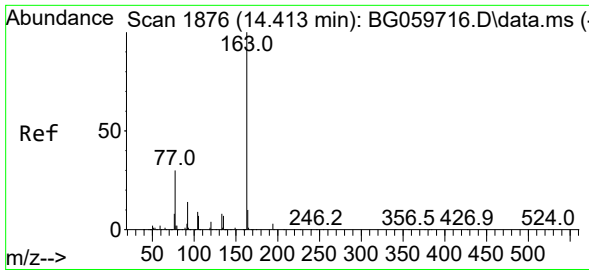


#49
 Acenaphthylene
 Concen: 54.283 ng
 RT: 14.694 min Scan# 1924
 Delta R.T. -0.012 min
 Lab File: BG059830.D
 Acq: 22 Nov 2023 23:06



Tgt Ion:152 Resp: 400322
 Ion Ratio Lower Upper
 152 100
 151 21.3 15.8 23.8
 153 13.1 12.2 18.4





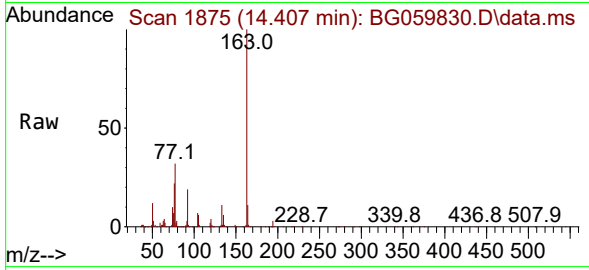
#50
Dimethylphthalate
Concen: 35.791 ng
RT: 14.407 min Scan# 1875
Delta R.T. -0.006 min
Lab File: BG059830.D
Acq: 22 Nov 2023 23:06

Instrument :

BNA_G

ClientSampleId :

WC-SED-01MSD



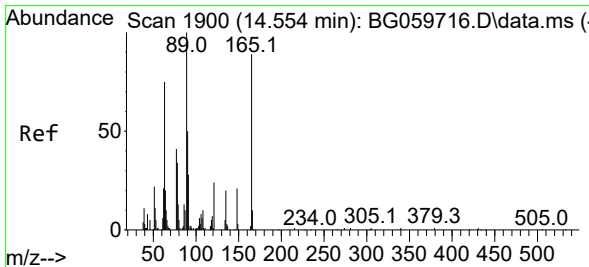
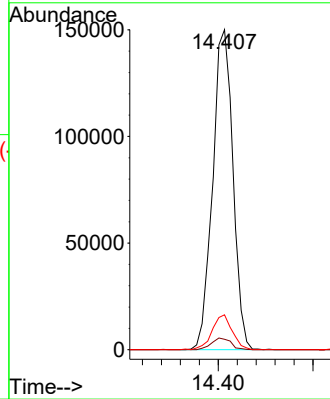
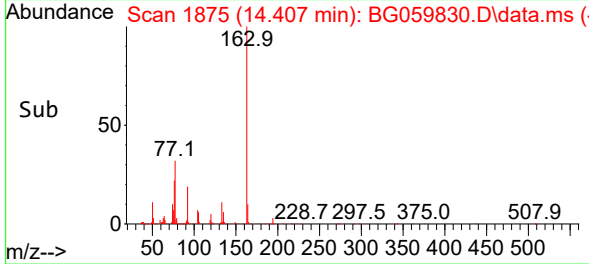
Tgt Ion:163 Resp: 22242
Ion Ratio Lower Upper
163 100
194 3.2 2.8 4.2
164 10.9 8.2 12.2

Manual Integrations

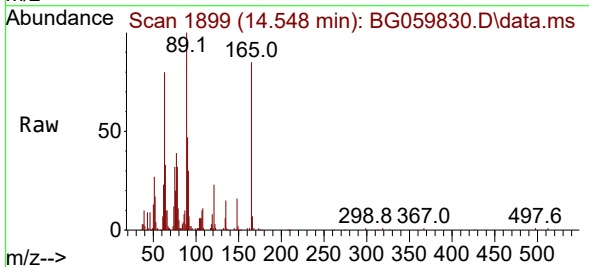
APPROVED

Reviewed By :Yogesh Patel 11/25/2023

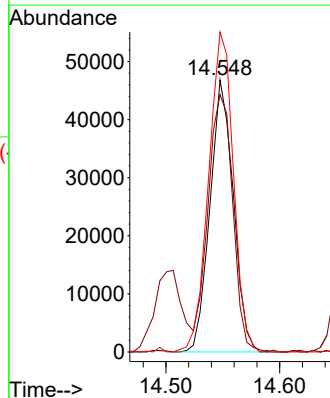
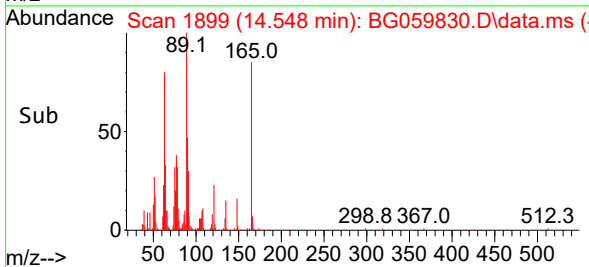
Supervised By :mohammad ahmed 11/25/2023

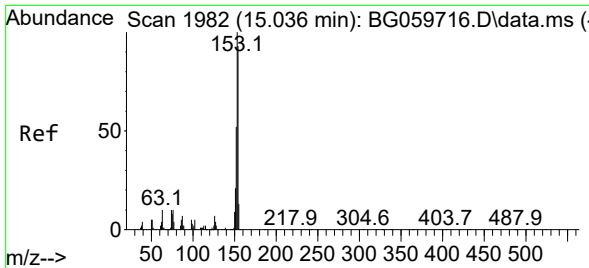


#51
2,6-Dinitrotoluene
Concen: 56.694 ng
RT: 14.548 min Scan# 1899
Delta R.T. -0.006 min
Lab File: BG059830.D
Acq: 22 Nov 2023 23:06



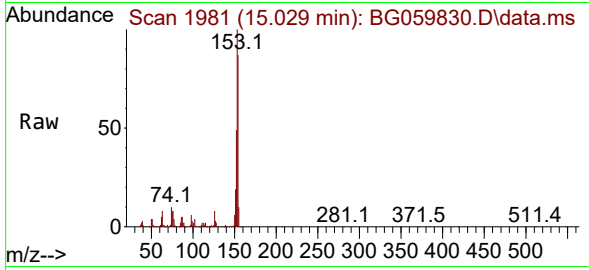
Tgt Ion:165 Resp: 66840
Ion Ratio Lower Upper
165 100
63 94.7 75.3 112.9
89 117.7 90.9 136.3





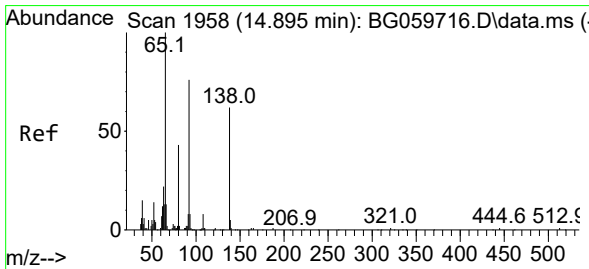
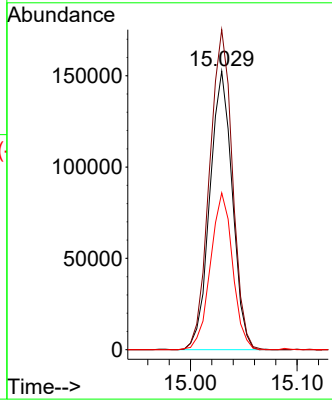
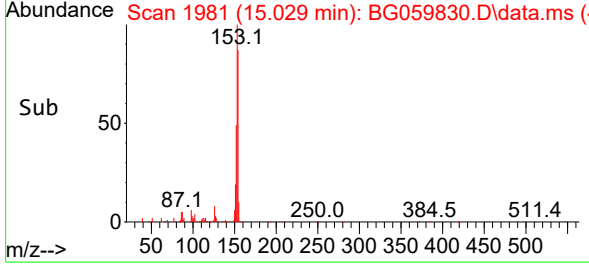
#52
 Acenaphthene
 Concen: 50.304 ng
 RT: 15.029 min Scan# 1981
 Delta R.T. -0.006 min
 Lab File: BG059830.D
 Acq: 22 Nov 2023 23:06

Instrument :
 BNA_G
 ClientSampleId :
 WC-SED-01MSD

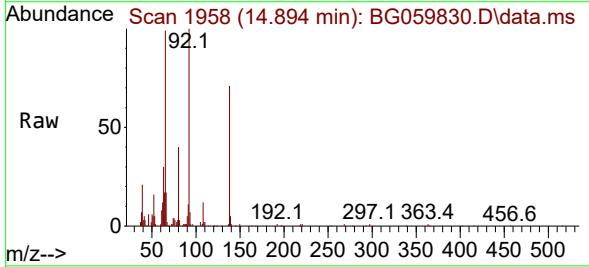


Tgt Ion:154 Resp: 223109
 Ion Ratio Lower Upper
 154 100
 153 114.8 85.8 128.8
 152 56.3 44.4 66.6

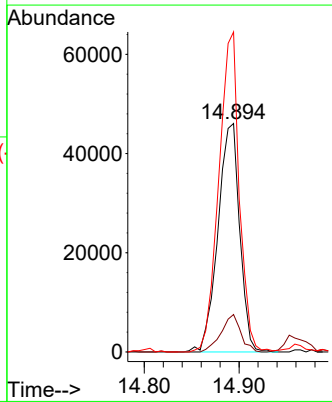
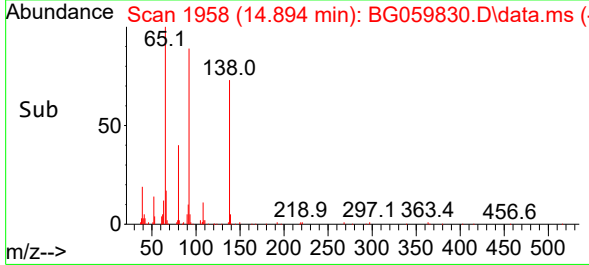
Manual Integrations
APPROVED
 Reviewed By :Yogesh Patel 11/25/2023
 Supervised By :mohammad ahmed 11/25/2023

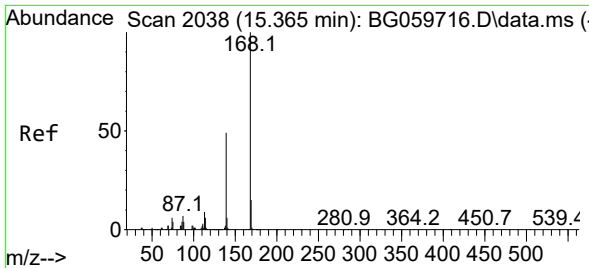


#53
 3-Nitroaniline
 Concen: 53.214 ng
 RT: 14.894 min Scan# 1958
 Delta R.T. -0.000 min
 Lab File: BG059830.D
 Acq: 22 Nov 2023 23:06



Tgt Ion:138 Resp: 73434
 Ion Ratio Lower Upper
 138 100
 108 16.4 9.9 14.9#
 92 140.0 98.3 147.5





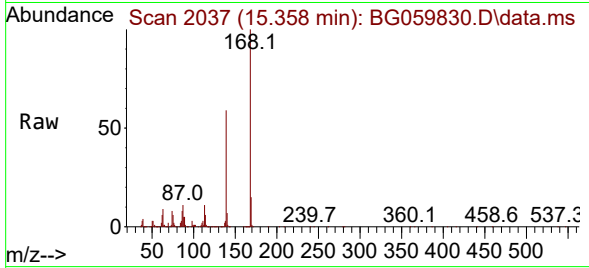
#55
 Dibenzofuran
 Concen: 52.200 ng
 RT: 15.358 min Scan# 2037
 Delta R.T. -0.006 min
 Lab File: BG059830.D
 Acq: 22 Nov 2023 23:06

Instrument :

BNA_G

ClientSampleId :

WC-SED-01MSD



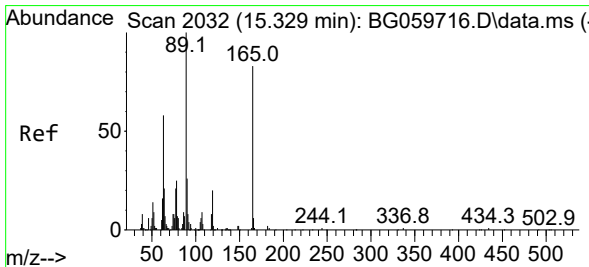
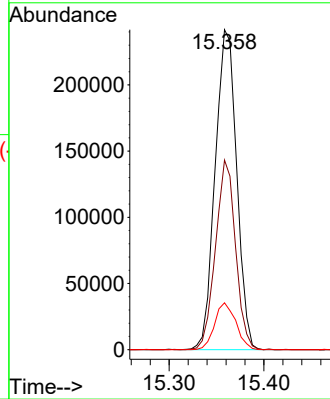
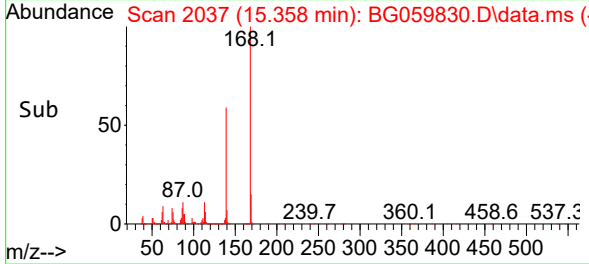
Tgt Ion:168 Resp: 38171
 Ion Ratio Lower Upper
 168 100
 139 59.3 38.9 58.3
 169 14.7 11.8 17.8

Manual Integrations

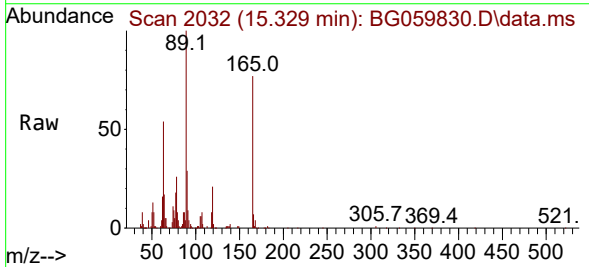
APPROVED

Reviewed By :Yogesh Patel 11/25/2023

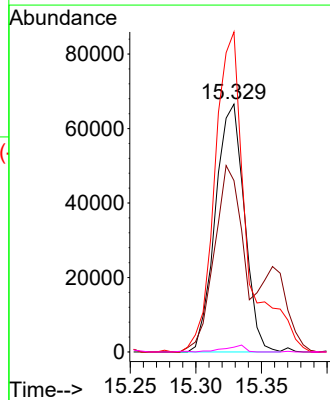
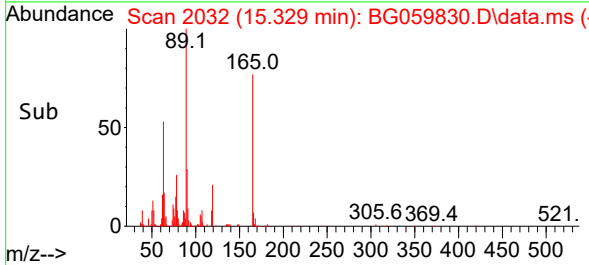
Supervised By :mohammad ahmed 11/25/2023

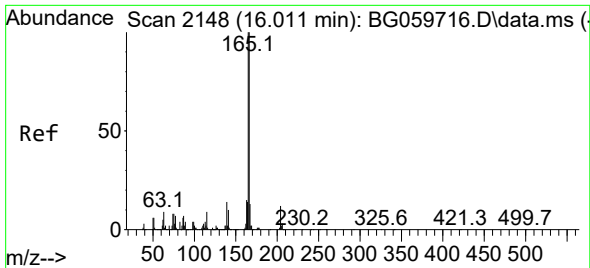


#57
 2,4-Dinitrotoluene
 Concen: 56.284 ng
 RT: 15.329 min Scan# 2032
 Delta R.T. -0.000 min
 Lab File: BG059830.D
 Acq: 22 Nov 2023 23:06



Tgt Ion:165 Resp: 102045
 Ion Ratio Lower Upper
 165 100
 63 69.1 55.8 83.8
 89 129.1 96.9 145.3
 182 1.9 1.8 2.6





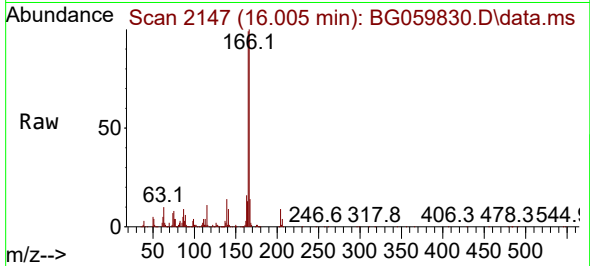
#58
 Fluorene
 Concen: 54.642 ng
 RT: 16.005 min Scan# 2147
 Delta R.T. -0.006 min
 Lab File: BG059830.D
 Acq: 22 Nov 2023 23:06

Instrument :

BNA_G

ClientSampleId :

WC-SED-01MSD



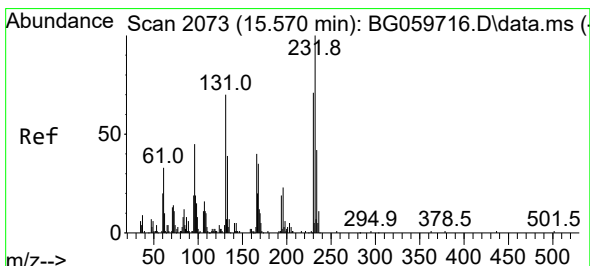
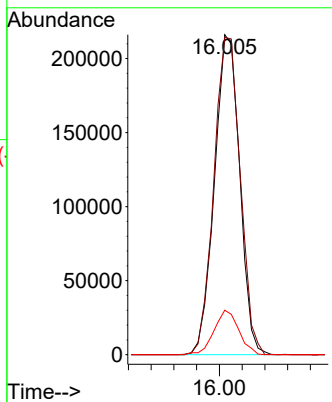
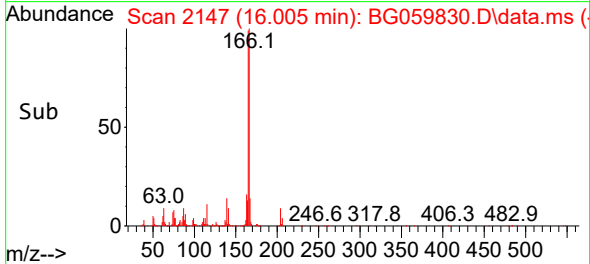
Tgt Ion:166 Resp: 33196
 Ion Ratio Lower Upper
 166 100
 165 99.2 79.9 119.9
 167 13.9 10.1 15.1

Manual Integrations

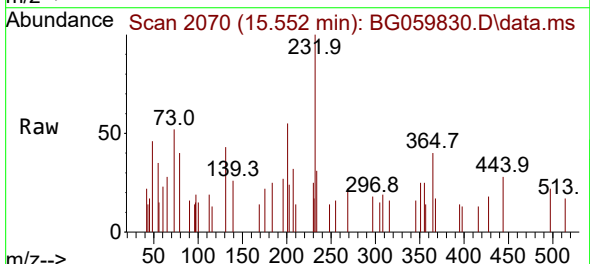
APPROVED

Reviewed By :Yogesh Patel 11/25/2023

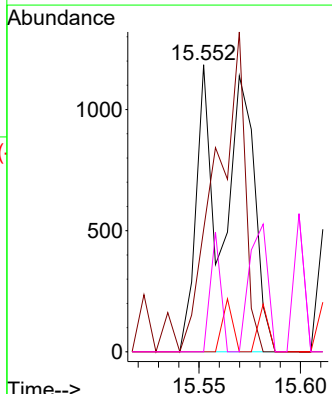
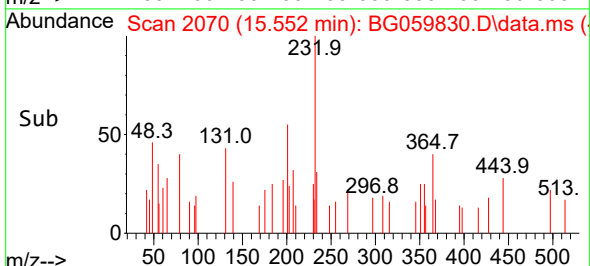
Supervised By :mohammad ahmed 11/25/2023

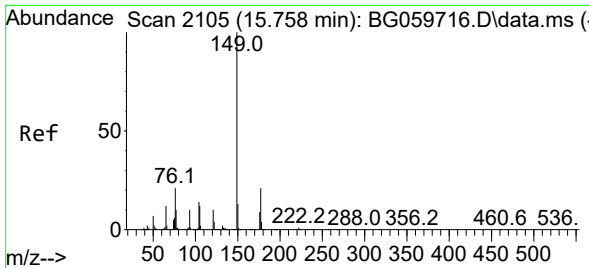


#59
 2,3,4,6-Tetrachlorophenol
 Concen: 1.036 ng m
 RT: 15.552 min Scan# 2070
 Delta R.T. -0.018 min
 Lab File: BG059830.D
 Acq: 22 Nov 2023 23:06



Tgt Ion:232 Resp: 1612
 Ion Ratio Lower Upper
 232 100
 131 81.1 50.2 75.2#
 130 4.8 4.3 6.5
 166 0.0 26.8 40.2#





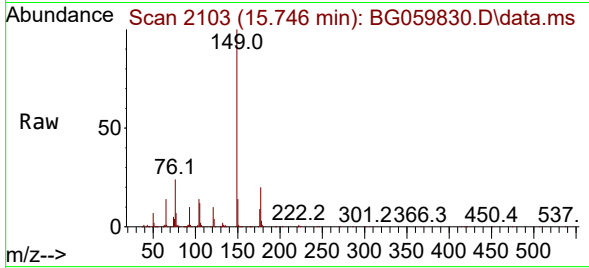
#60
 Diethylphthalate
 Concen: 48.837 ng
 RT: 15.746 min Scan# 2105
 Delta R.T. -0.012 min
 Lab File: BG059830.D
 Acq: 22 Nov 2023 23:06

Instrument :

BNA_G

ClientSampleId :

WC-SED-01MSD



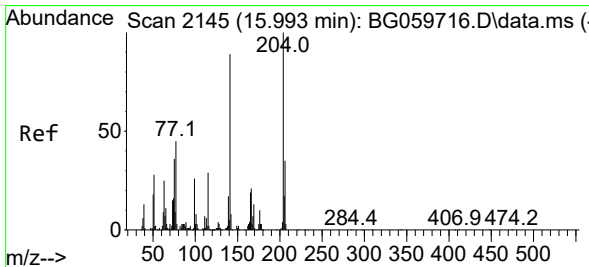
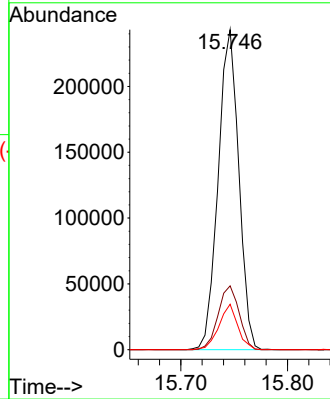
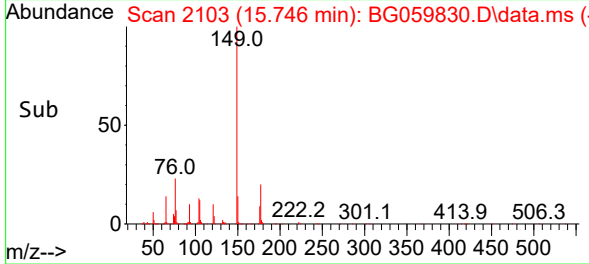
Tgt Ion:149 Resp: 32550
 Ion Ratio Lower Upper
 149 100
 177 20.0 16.6 24.8
 150 14.2 10.7 16.1

Manual Integrations

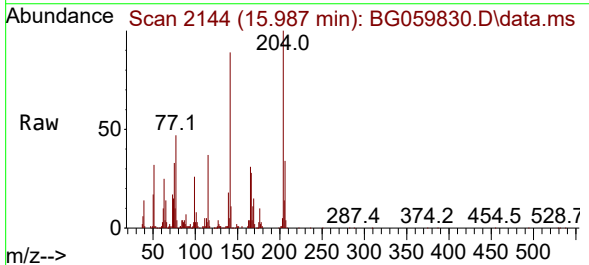
APPROVED

Reviewed By :Yogesh Patel 11/25/2023

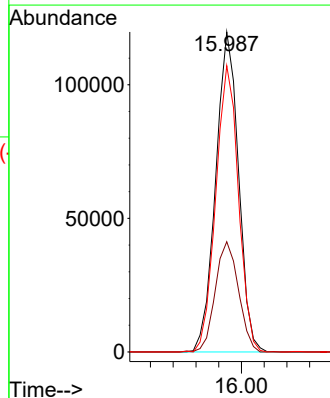
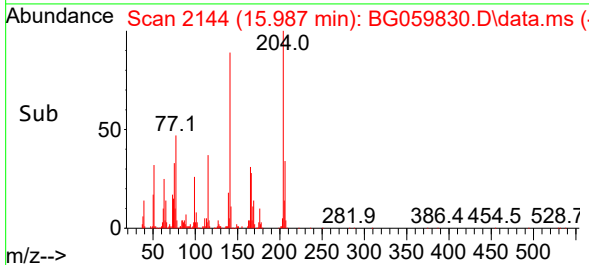
Supervised By :mohammad ahmed 11/25/2023

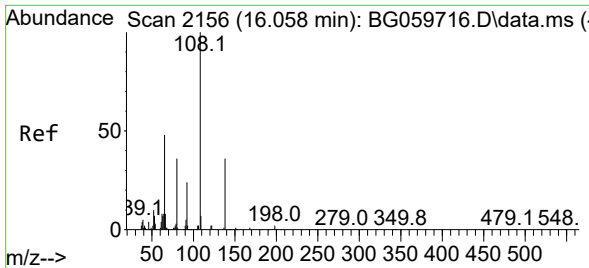


#61
 4-Chlorophenyl-phenylether
 Concen: 53.328 ng
 RT: 15.987 min Scan# 2144
 Delta R.T. -0.006 min
 Lab File: BG059830.D
 Acq: 22 Nov 2023 23:06



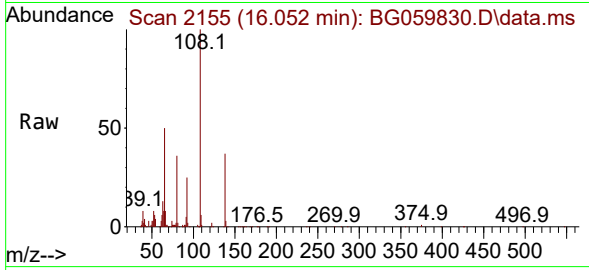
Tgt Ion:204 Resp: 166756
 Ion Ratio Lower Upper
 204 100
 206 34.5 28.1 42.1
 141 89.5 70.9 106.3





#62
 4-Nitroaniline
 Concen: 52.397 ng
 RT: 16.052 min Scan# 2156
 Delta R.T. -0.006 min
 Lab File: BG059830.D
 Acq: 22 Nov 2023 23:06

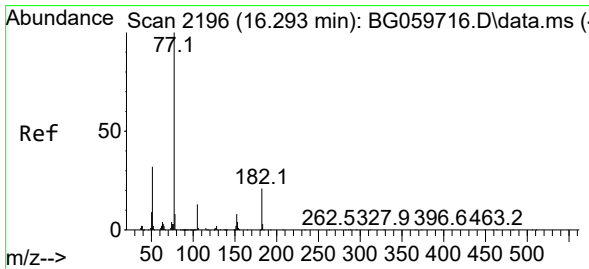
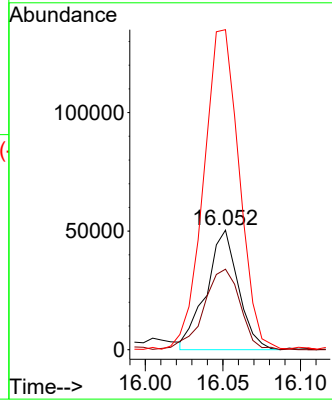
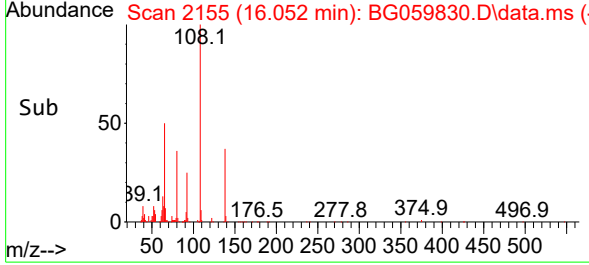
Instrument : BNA_G
 ClientSampleId : WC-SED-01MSD



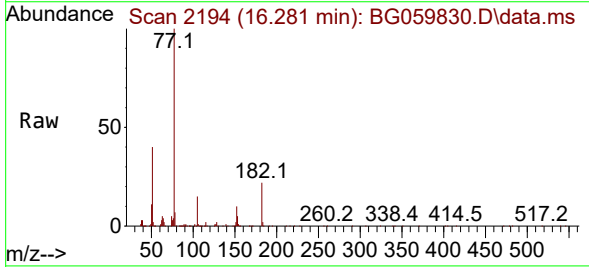
Tgt Ion:138 Resp: 7246
 Ion Ratio Lower Upper
 138 100
 92 67.4 45.8 85.8
 108 267.9 256.3 296.3

Manual Integrations
 APPROVED

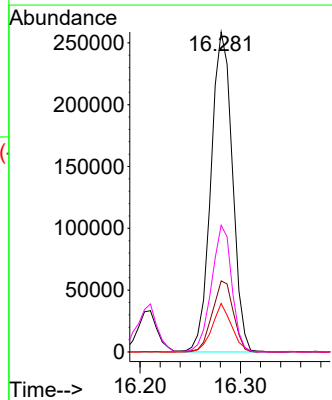
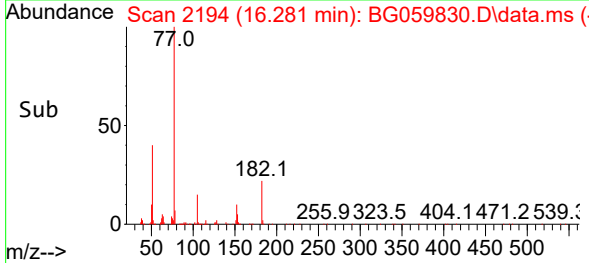
Reviewed By :Yogesh Patel 11/25/2023
 Supervised By :mohammad ahmed 11/25/2023

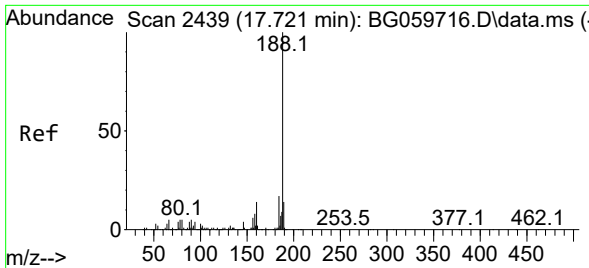


#63
 Azobenzene
 Concen: 51.914 ng
 RT: 16.281 min Scan# 2194
 Delta R.T. -0.012 min
 Lab File: BG059830.D
 Acq: 22 Nov 2023 23:06



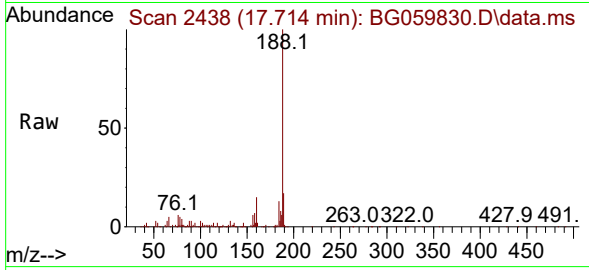
Tgt Ion: 77 Resp: 384518
 Ion Ratio Lower Upper
 77 100
 182 22.2 1.1 41.1
 105 15.1 0.0 33.0
 51 39.6 12.1 52.1





#64
 Phenanthrene-d10
 Concen: 20.000 ng
 RT: 17.714 min Scan# 2439
 Delta R.T. -0.006 min
 Lab File: BG059830.D
 Acq: 22 Nov 2023 23:06

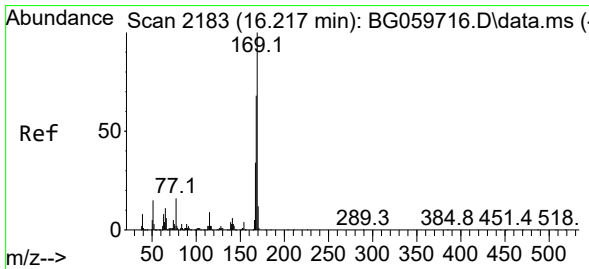
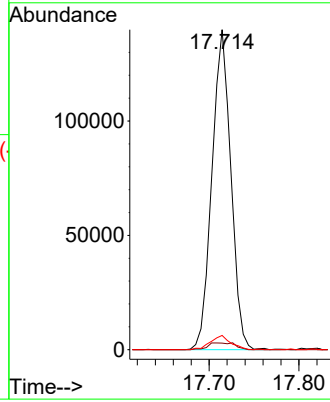
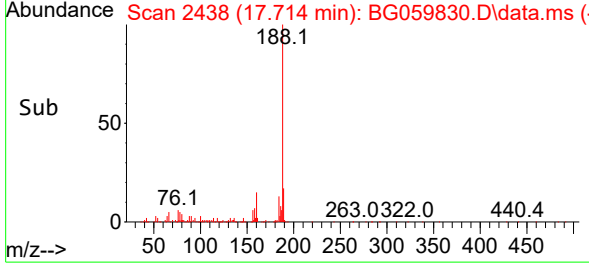
Instrument : BNA_G
 Client Sample Id : WC-SED-01MSD



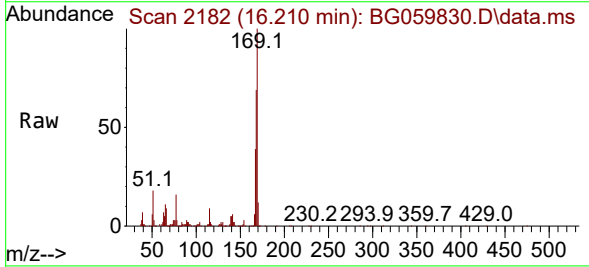
Tgt Ion:188 Resp: 204634
 Ion Ratio Lower Upper
 188 100
 94 2.1 3.0 4.4
 80 4.5 4.2 6.4

Manual Integrations
 APPROVED

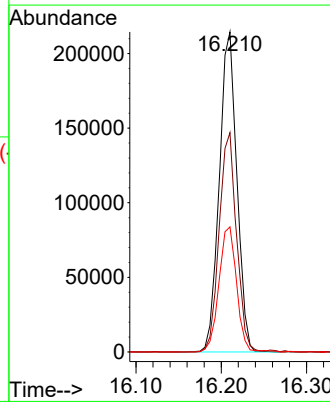
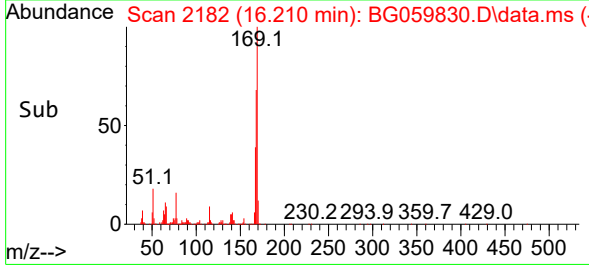
Reviewed By :Yogesh Patel 11/25/2023
 Supervised By :mohammad ahmed 11/25/2023

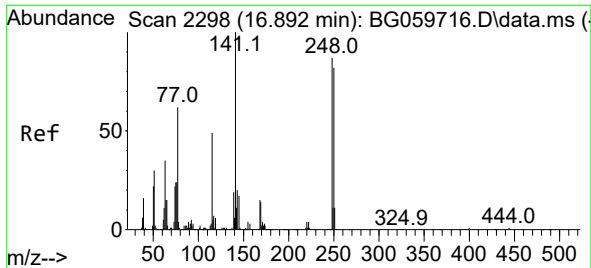


#66
 n-Nitrosodiphenylamine
 Concen: 51.355 ng
 RT: 16.210 min Scan# 2182
 Delta R.T. -0.006 min
 Lab File: BG059830.D
 Acq: 22 Nov 2023 23:06



Tgt Ion:169 Resp: 306987
 Ion Ratio Lower Upper
 169 100
 168 68.6 54.5 81.7
 167 39.1 27.8 41.6





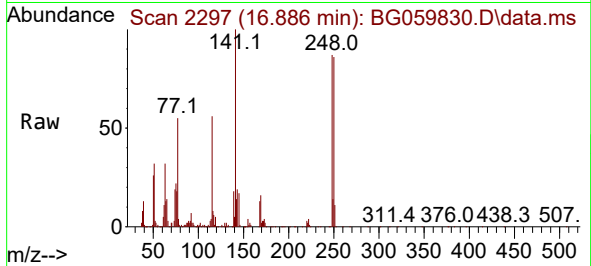
#67
 4-Bromophenyl-phenylether
 Concen: 51.327 ng
 RT: 16.886 min Scan# 21
 Delta R.T. -0.006 min
 Lab File: BG059830.D
 Acq: 22 Nov 2023 23:06

Instrument :

BNA_G

ClientSampleId :

WC-SED-01MSD

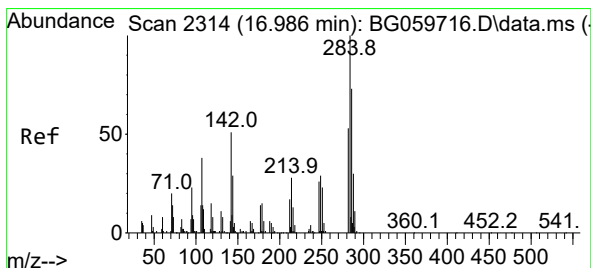
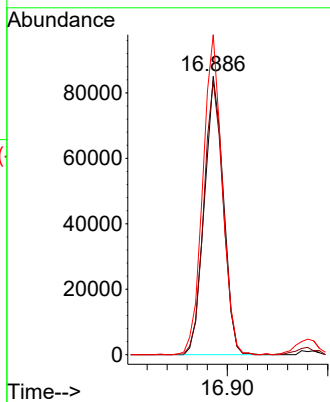
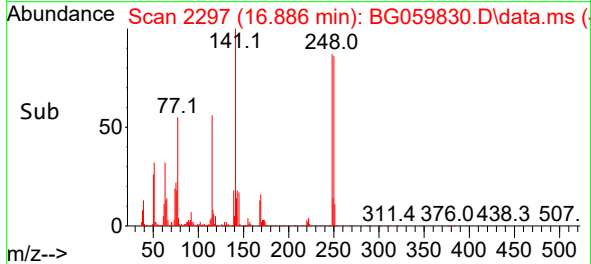


Tgt Ion:248 Resp: 11283
 Ion Ratio Lower Upper
 248 100
 250 98.4 75.2 112.8
 141 115.0 91.5 137.3

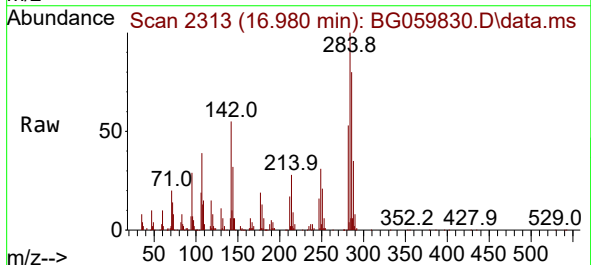
Manual Integrations

APPROVED

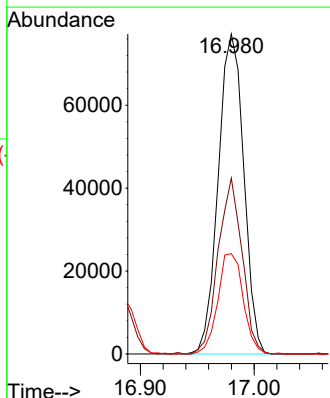
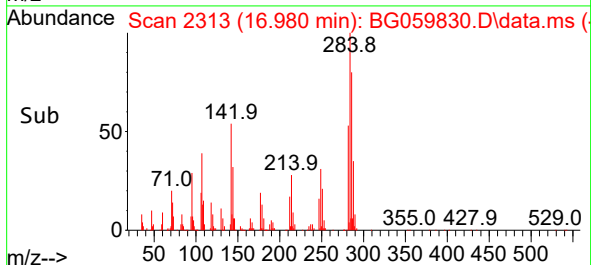
Reviewed By :Yogesh Patel 11/25/2023
 Supervised By :mohammad ahmed 11/25/2023

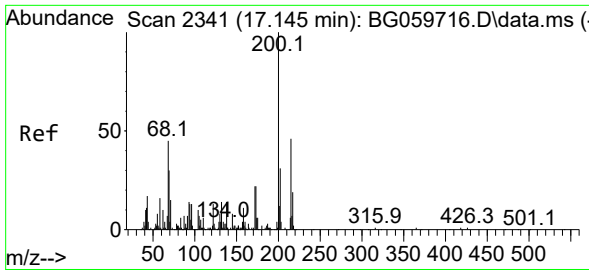


#68
 Hexachlorobenzene
 Concen: 58.625 ng
 RT: 16.980 min Scan# 2313
 Delta R.T. -0.006 min
 Lab File: BG059830.D
 Acq: 22 Nov 2023 23:06



Tgt Ion:284 Resp: 120289
 Ion Ratio Lower Upper
 284 100
 142 55.0 41.0 61.6
 249 34.3 24.2 36.4





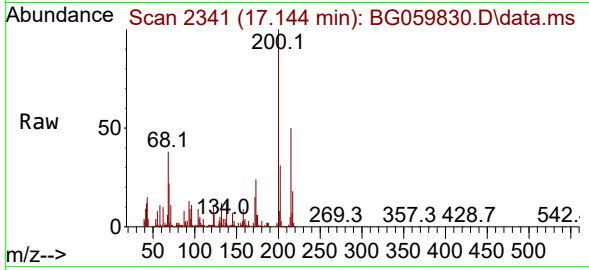
#69
 Atrazine
 Concen: 71.812 ng
 RT: 17.144 min Scan# 21
 Delta R.T. -0.000 min
 Lab File: BG059830.D
 Acq: 22 Nov 2023 23:06

Instrument :

BNA_G

ClientSampleId :

WC-SED-01MSD



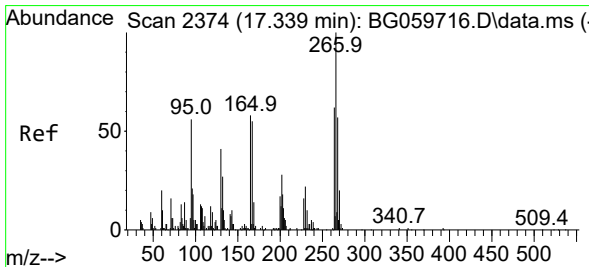
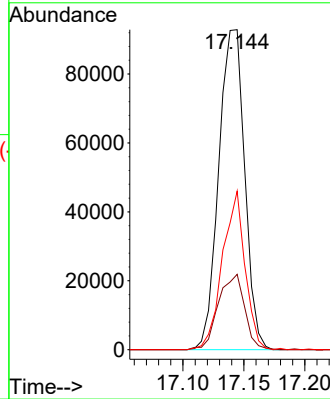
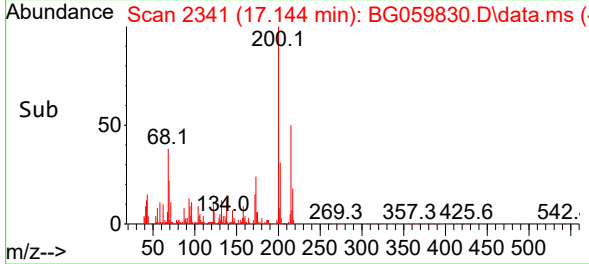
Tgt Ion:200 Resp: 13763
 Ion Ratio Lower Upper
 200 100
 173 23.5 2.3 42.3
 215 49.5 25.6 65.6

Manual Integrations

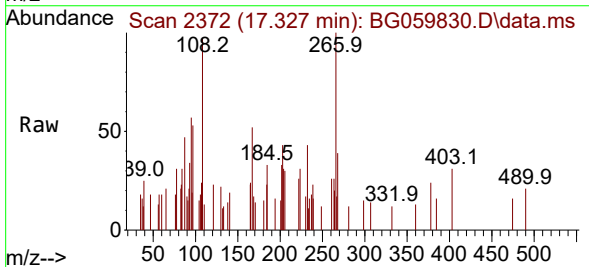
APPROVED

Reviewed By :Yogesh Patel 11/25/2023

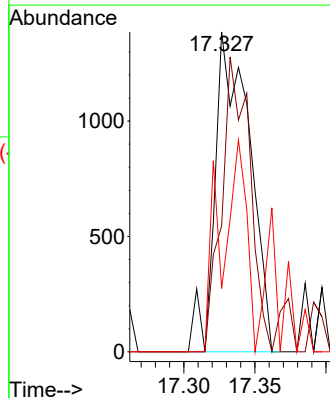
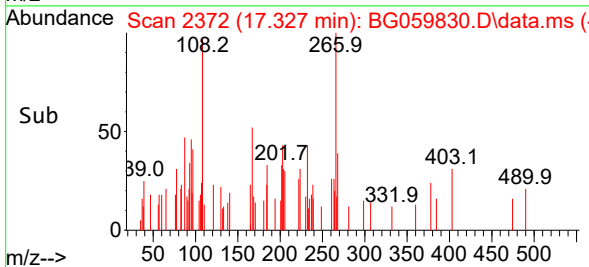
Supervised By :mohammad ahmed 11/25/2023

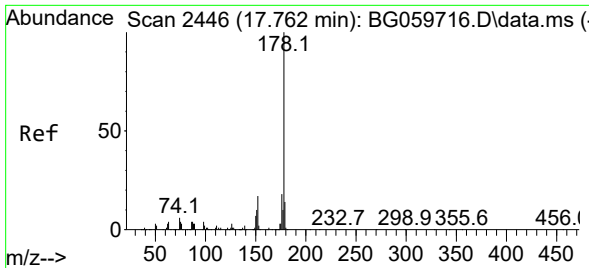


#70
 Pentachlorophenol
 Concen: 1.502 ng
 RT: 17.327 min Scan# 2372
 Delta R.T. -0.012 min
 Lab File: BG059830.D
 Acq: 22 Nov 2023 23:06



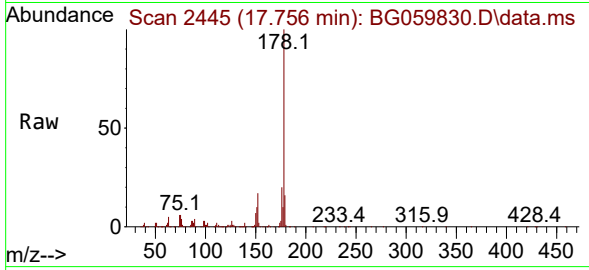
Tgt Ion:266 Resp: 2351
 Ion Ratio Lower Upper
 266 100
 268 39.4 45.7 68.5#
 264 19.8 49.8 74.8#





#71
 Phenanthrene
 Concen: 52.546 ng
 RT: 17.756 min Scan# 2445
 Delta R.T. -0.006 min
 Lab File: BG059830.D
 Acq: 22 Nov 2023 23:06

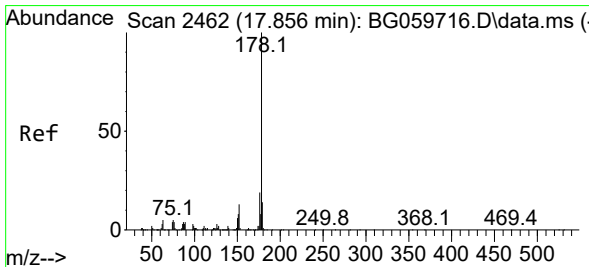
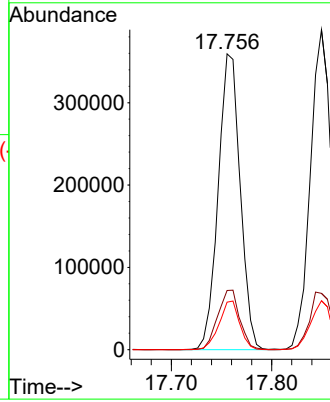
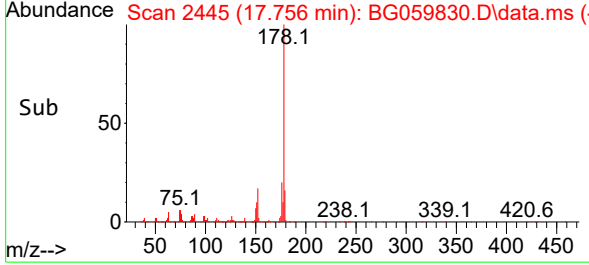
Instrument : BNA_G
 ClientSampleId : WC-SED-01MSD



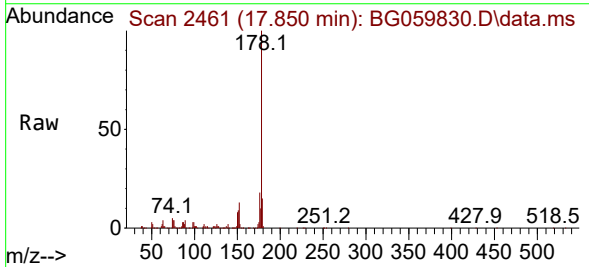
Tgt Ion:178 Resp: 546690
 Ion Ratio Lower Upper
 178 100
 176 20.0 14.5 21.7
 179 16.1 11.2 16.8

Manual Integrations
 APPROVED

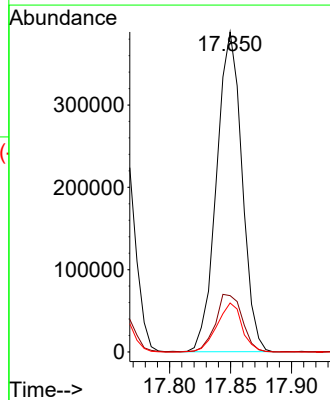
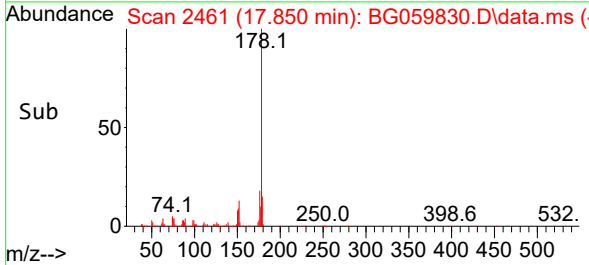
Reviewed By :Yogesh Patel 11/25/2023
 Supervised By :mohammad ahmed 11/25/2023

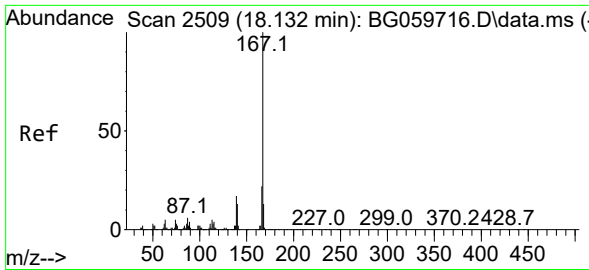


#72
 Anthracene
 Concen: 52.103 ng
 RT: 17.850 min Scan# 2461
 Delta R.T. -0.006 min
 Lab File: BG059830.D
 Acq: 22 Nov 2023 23:06



Tgt Ion:178 Resp: 563230
 Ion Ratio Lower Upper
 178 100
 176 17.6 15.0 22.4
 179 15.3 11.5 17.3





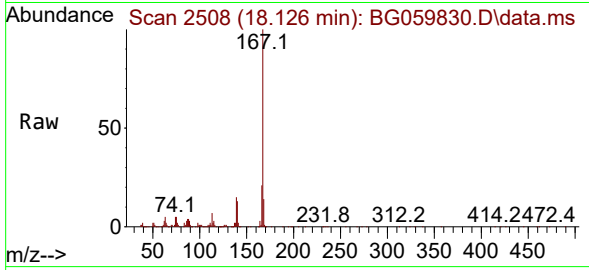
#73
 Carbazole
 Concen: 52.868 ng
 RT: 18.126 min Scan# 2508
 Delta R.T. -0.006 min
 Lab File: BG059830.D
 Acq: 22 Nov 2023 23:06

Instrument :

BNA_G

Client Sample Id :

WC-SED-01MSD



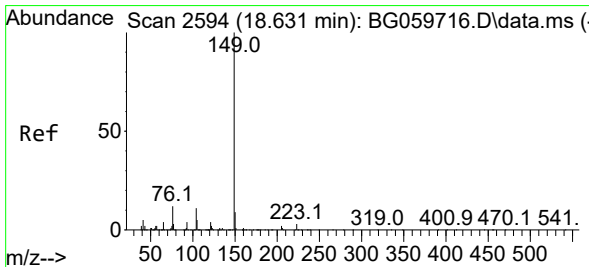
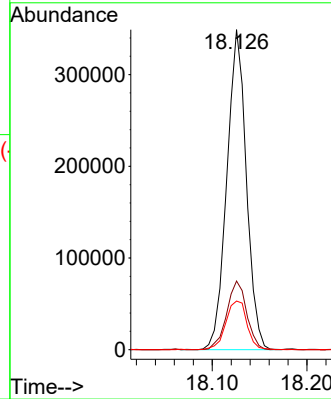
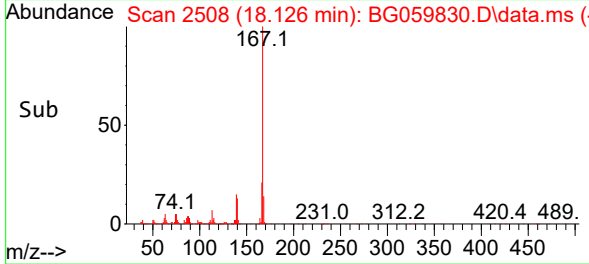
Tgt Ion:167 Resp: 499274
 Ion Ratio Lower Upper
 167 100
 166 21.4 17.4 26.0
 139 15.2 13.2 19.8

Manual Integrations

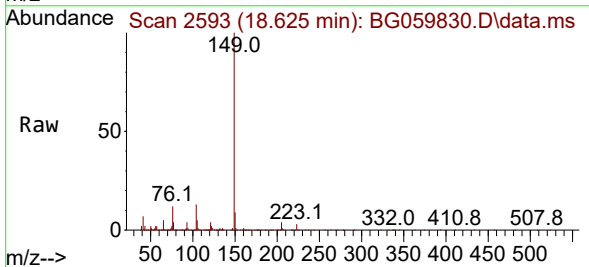
APPROVED

Reviewed By :Yogesh Patel 11/25/2023

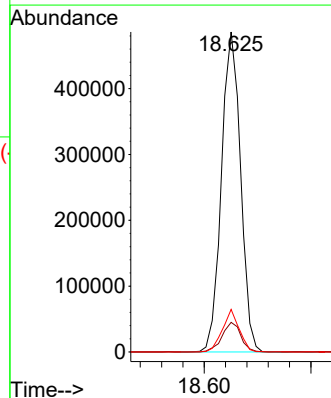
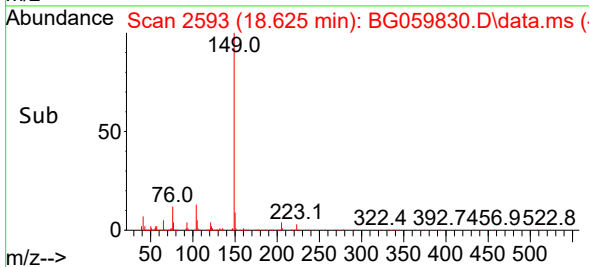
Supervised By :mohammad ahmed 11/25/2023

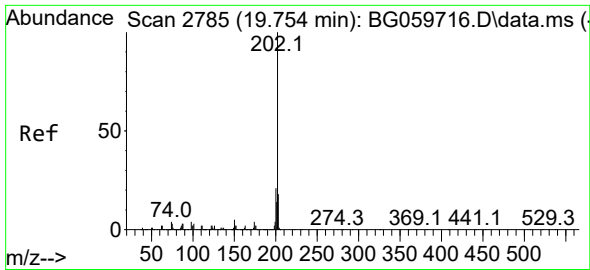


#74
 Di-n-butylphthalate
 Concen: 52.878 ng
 RT: 18.625 min Scan# 2593
 Delta R.T. -0.006 min
 Lab File: BG059830.D
 Acq: 22 Nov 2023 23:06



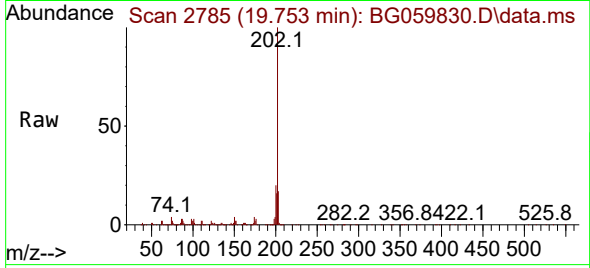
Tgt Ion:149 Resp: 603610
 Ion Ratio Lower Upper
 149 100
 150 9.2 7.5 11.3
 104 13.3 8.6 12.8#





#75
 Fluoranthene
 Concen: 51.503 ng
 RT: 19.753 min Scan# 21
 Delta R.T. -0.000 min
 Lab File: BG059830.D
 Acq: 22 Nov 2023 23:06

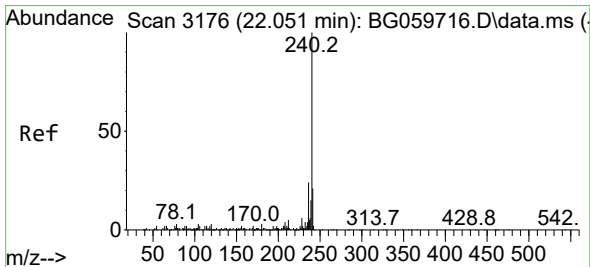
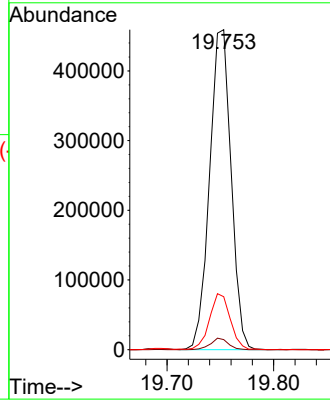
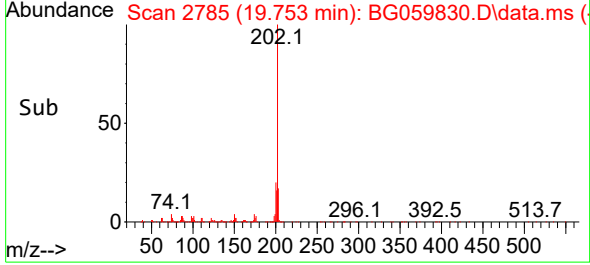
Instrument : BNA_G
 Client Sample Id : WC-SED-01MSD



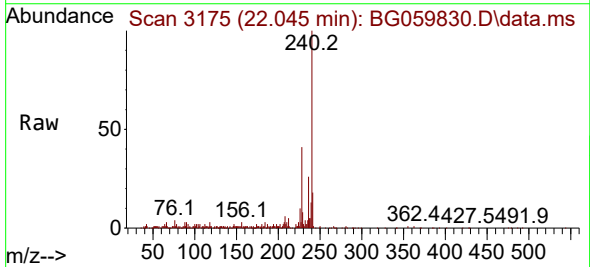
Tgt Ion: 202 Resp: 642590
 Ion Ratio Lower Upper
 202 100
 101 3.2 0.0 22.7
 203 16.5 0.0 38.2

Manual Integrations
 APPROVED

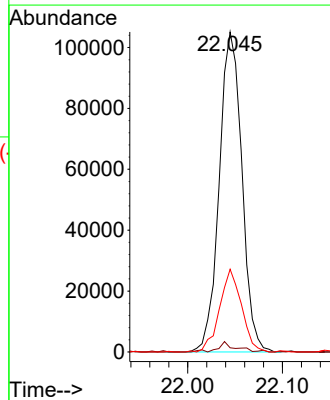
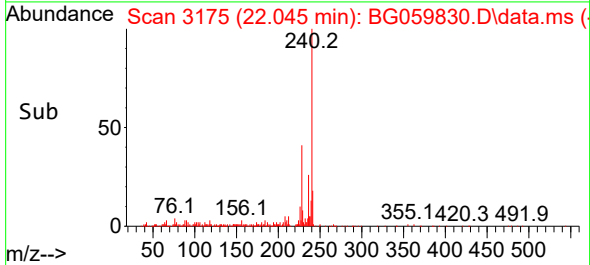
Reviewed By : Yogesh Patel 11/25/2023
 Supervised By : mohammad ahmed 11/25/2023

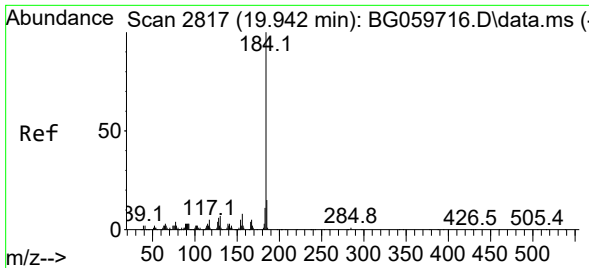


#76
 Chrysene-d12
 Concen: 20.000 ng
 RT: 22.045 min Scan# 3175
 Delta R.T. -0.006 min
 Lab File: BG059830.D
 Acq: 22 Nov 2023 23:06



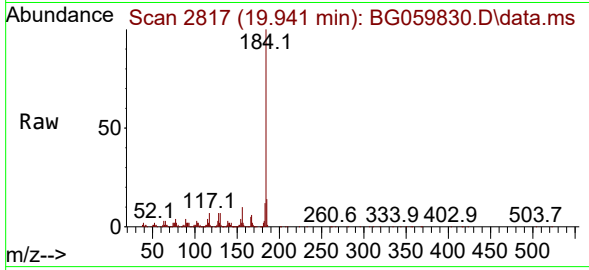
Tgt Ion: 240 Resp: 174501
 Ion Ratio Lower Upper
 240 100
 120 1.3 2.2 3.2#
 236 25.8 19.4 29.2





#77
 Benzidine
 Concen: 113.604 ng
 RT: 19.941 min Scan# 2817
 Delta R.T. -0.000 min
 Lab File: BG059830.D
 Acq: 22 Nov 2023 23:06

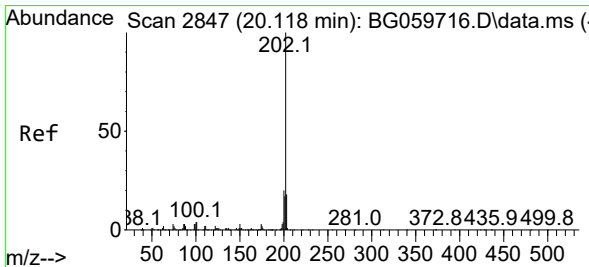
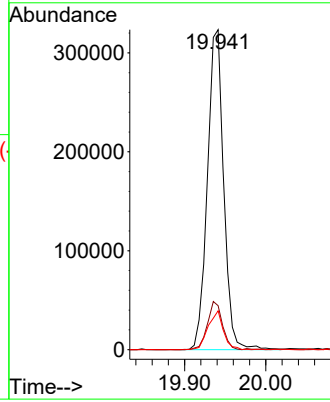
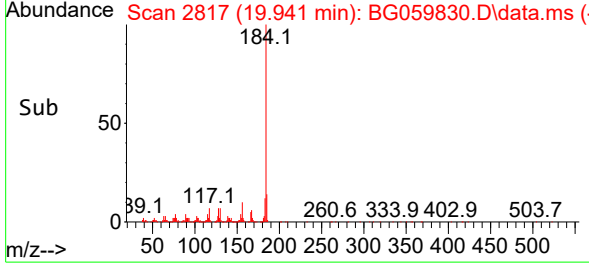
Instrument : BNA_G
 Client Sample Id : WC-SED-01MSD



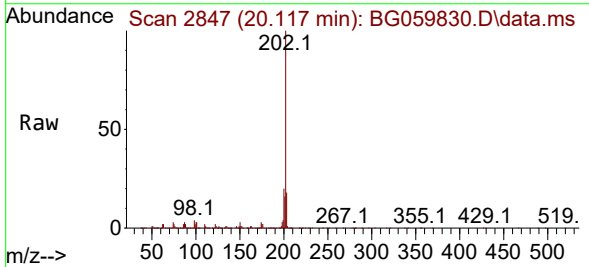
Tgt Ion:184 Resp: 44952
 Ion Ratio Lower Upper
 184 100
 185 13.8 12.2 18.2
 183 12.2 8.8 13.2

Manual Integrations
 APPROVED

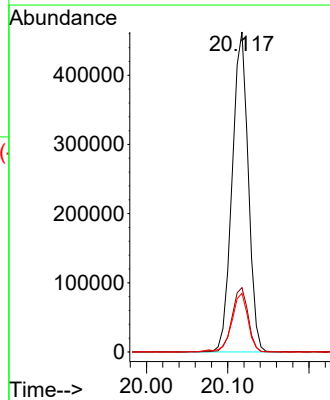
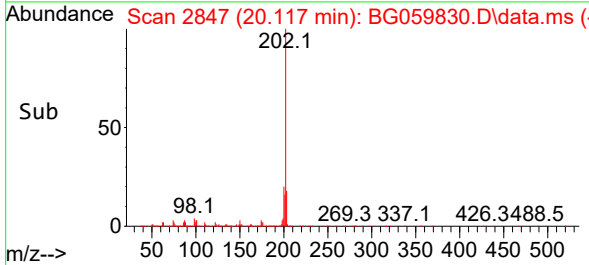
Reviewed By :Yogesh Patel 11/25/2023
 Supervised By :mohammad ahmed 11/25/2023

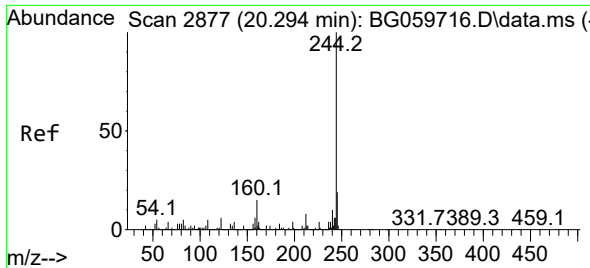


#78
 Pyrene
 Concen: 53.555 ng
 RT: 20.117 min Scan# 2847
 Delta R.T. -0.000 min
 Lab File: BG059830.D
 Acq: 22 Nov 2023 23:06



Tgt Ion:202 Resp: 635856
 Ion Ratio Lower Upper
 202 100
 200 20.1 16.2 24.4
 203 18.4 14.0 21.0





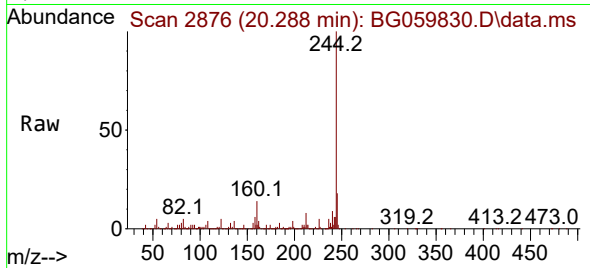
#79
 Terphenyl-d14
 Concen: 63.411 ng
 RT: 20.288 min Scan# 21
 Delta R.T. -0.006 min
 Lab File: BG059830.D
 Acq: 22 Nov 2023 23:06

Instrument :

BNA_G

ClientSampleId :

WC-SED-01MSD

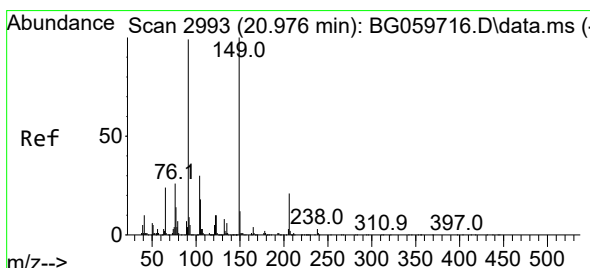
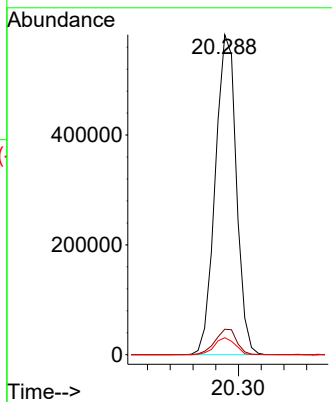
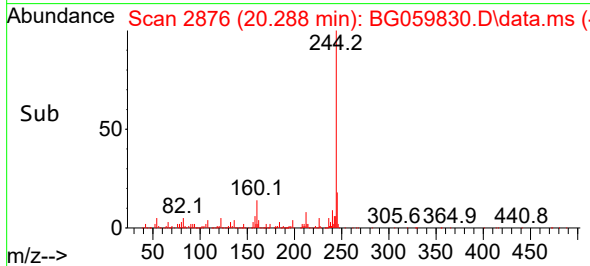


Tgt Ion:244 Resp: 749549
 Ion Ratio Lower Upper
 244 100
 212 8.0 6.6 10.0
 122 5.3 4.4 6.6

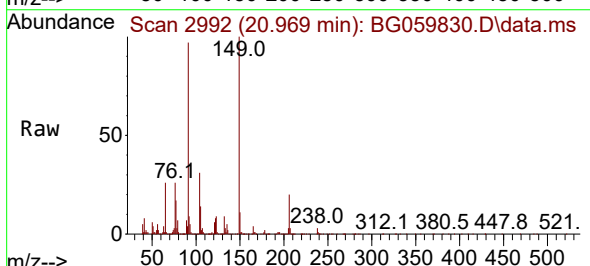
Manual Integrations

APPROVED

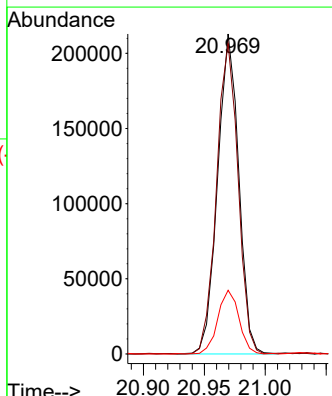
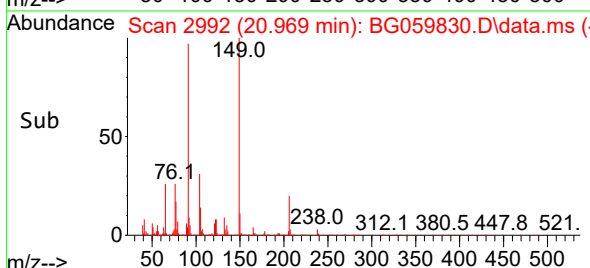
Reviewed By :Yogesh Patel 11/25/2023
 Supervised By :mohammad ahmed 11/25/2023

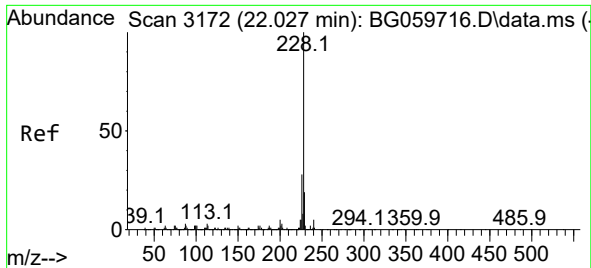


#80
 Butylbenzylphthalate
 Concen: 52.884 ng
 RT: 20.969 min Scan# 2992
 Delta R.T. -0.006 min
 Lab File: BG059830.D
 Acq: 22 Nov 2023 23:06



Tgt Ion:149 Resp: 257462
 Ion Ratio Lower Upper
 149 100
 91 97.0 79.6 119.4
 206 19.9 16.9 25.3





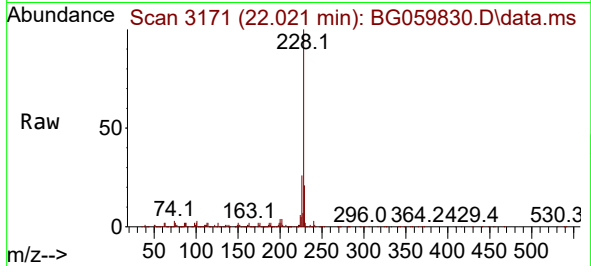
#81
 Benzo(a)anthracene
 Concen: 50.614 ng
 RT: 22.021 min Scan# 3171
 Delta R.T. -0.006 min
 Lab File: BG059830.D
 Acq: 22 Nov 2023 23:06

Instrument :

BNA_G

ClientSampleId :

WC-SED-01MSD

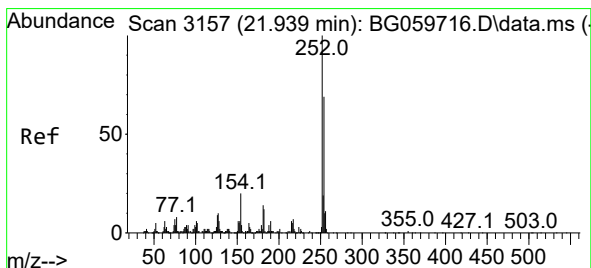
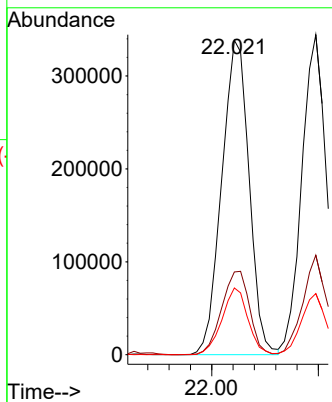
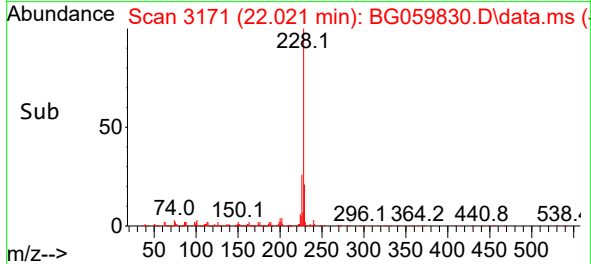


Tgt Ion:228 Resp: 60432
 Ion Ratio Lower Upper
 228 100
 226 26.3 22.1 33.1
 229 21.2 14.9 22.3

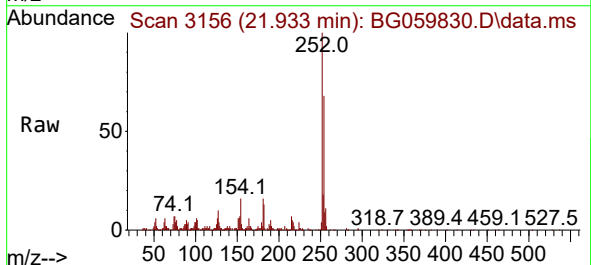
Manual Integrations

APPROVED

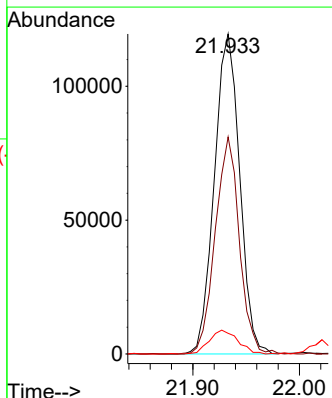
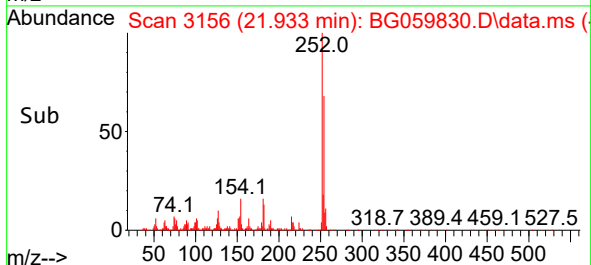
Reviewed By :Yogesh Patel 11/25/2023
 Supervised By :mohammad ahmed 11/25/2023

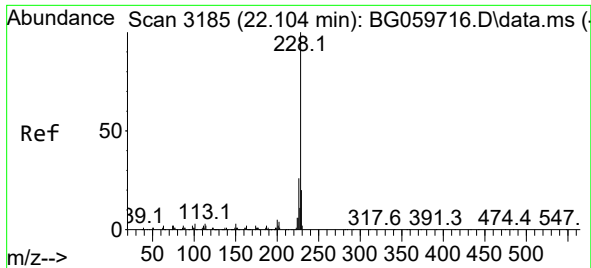


#82
 3,3'-Dichlorobenzidine
 Concen: 44.292 ng
 RT: 21.933 min Scan# 3156
 Delta R.T. -0.006 min
 Lab File: BG059830.D
 Acq: 22 Nov 2023 23:06



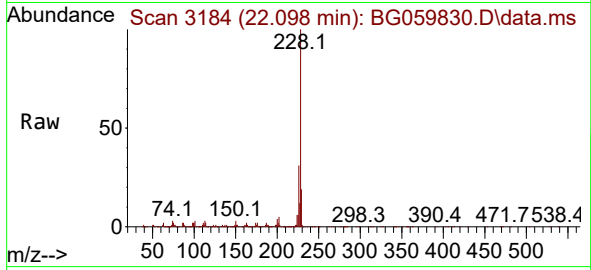
Tgt Ion:252 Resp: 197020
 Ion Ratio Lower Upper
 252 100
 254 67.8 55.2 82.8
 126 6.5 7.0 10.6#





#83
 Chrysene
 Concen: 50.483 ng
 RT: 22.098 min Scan# 3184
 Delta R.T. -0.006 min
 Lab File: BG059830.D
 Acq: 22 Nov 2023 23:06

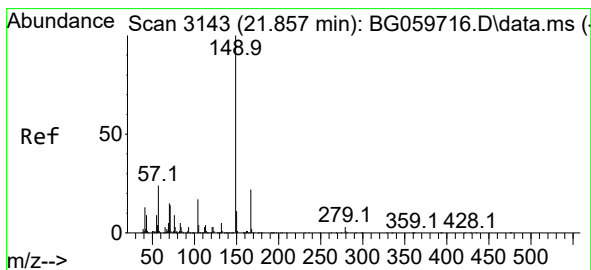
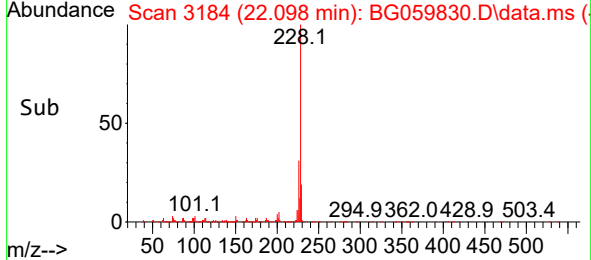
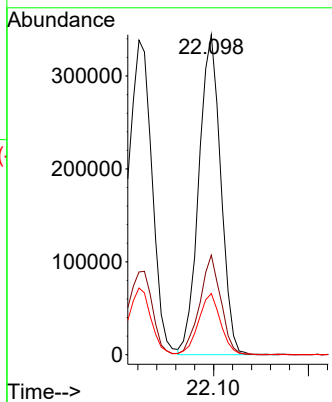
Instrument : BNA_G
 Client Sample Id : WC-SED-01MSD



Tgt Ion: 228 Resp: 552544
 Ion Ratio Lower Upper
 228 100
 226 31.1 21.1 31.7
 229 19.1 16.2 24.4

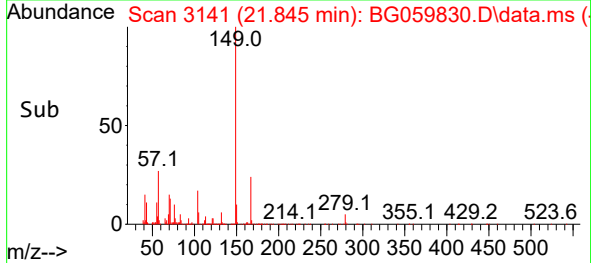
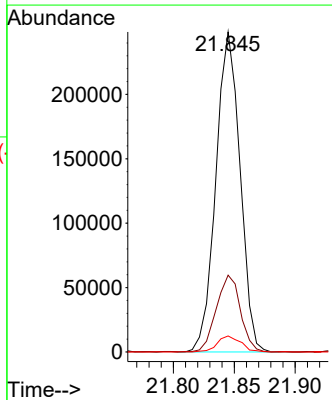
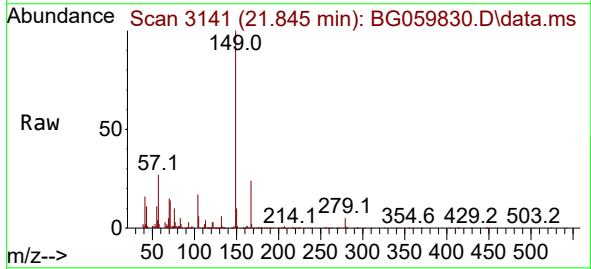
Manual Integrations
 APPROVED

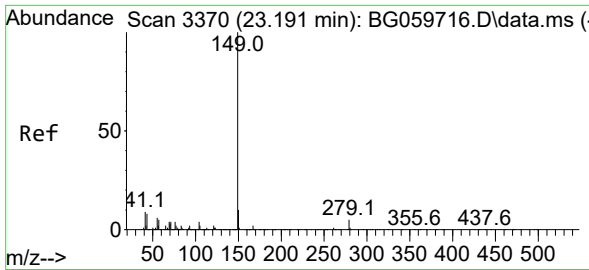
Reviewed By : Yogesh Patel 11/25/2023
 Supervised By : mohammad ahmed 11/25/2023



#84
 Bis(2-ethylhexyl)phthalate
 Concen: 50.401 ng
 RT: 21.845 min Scan# 3141
 Delta R.T. -0.012 min
 Lab File: BG059830.D
 Acq: 22 Nov 2023 23:06

Tgt Ion: 149 Resp: 343012
 Ion Ratio Lower Upper
 149 100
 167 24.0 17.6 26.4
 279 5.0 2.7 4.1#





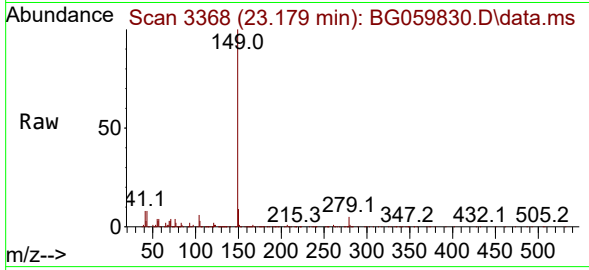
#85
 Di-n-octyl phthalate
 Concen: 43.936 ng
 RT: 23.179 min Scan# 31
 Delta R.T. -0.012 min
 Lab File: BG059830.D
 Acq: 22 Nov 2023 23:06

Instrument :

BNA_G

ClientSampleId :

WC-SED-01MSD



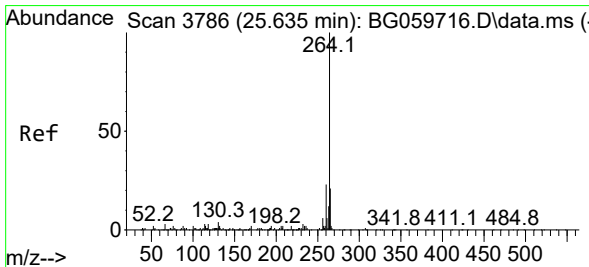
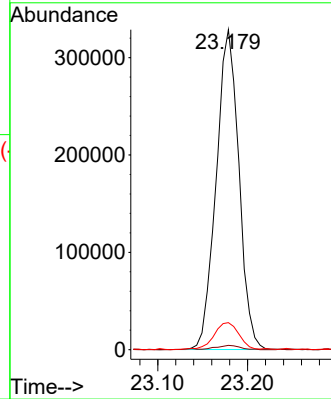
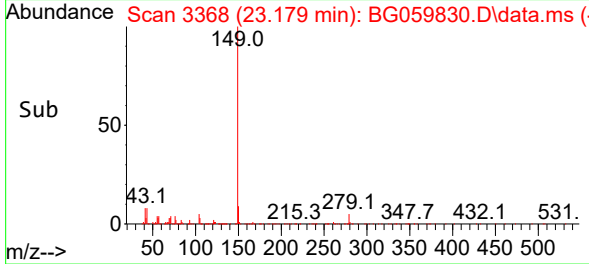
Tgt Ion:149 Resp: 575634
 Ion Ratio Lower Upper
 149 100
 167 1.4 1.2 1.8
 43 9.4 6.3 9.5

Manual Integrations

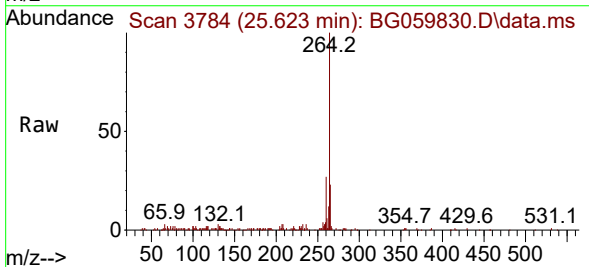
APPROVED

Reviewed By :Yogesh Patel 11/25/2023

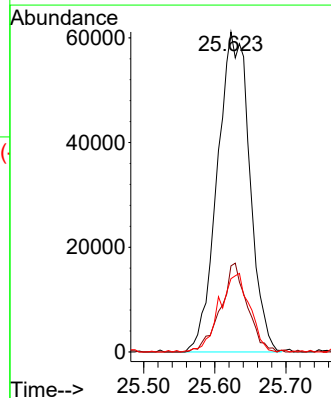
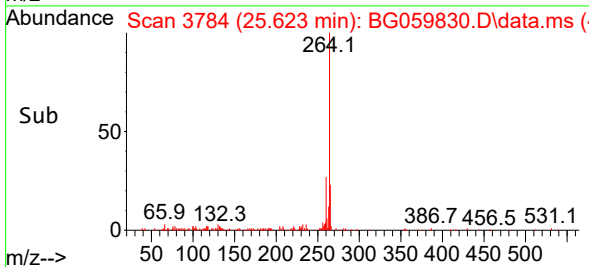
Supervised By :mohammad ahmed 11/25/2023

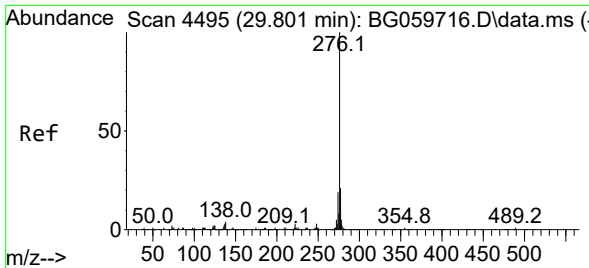


#86
 Perylene-d12
 Concen: 20.000 ng
 RT: 25.623 min Scan# 3784
 Delta R.T. -0.012 min
 Lab File: BG059830.D
 Acq: 22 Nov 2023 23:06



Tgt Ion:264 Resp: 192445
 Ion Ratio Lower Upper
 264 100
 260 26.9 18.5 27.7
 265 22.9 17.0 25.6





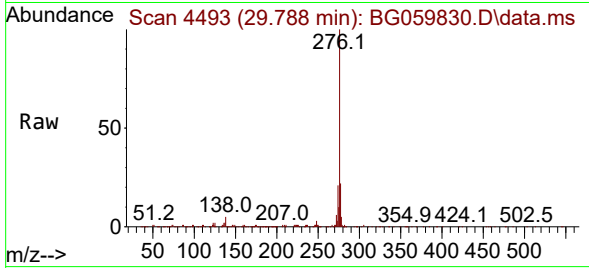
#87
 Indeno(1,2,3-cd)pyrene
 Concen: 71.987 ng
 RT: 29.788 min Scan# 4493
 Delta R.T. -0.012 min
 Lab File: BG059830.D
 Acq: 22 Nov 2023 23:06

Instrument :

BNA_G

ClientSampleId :

WC-SED-01MSD



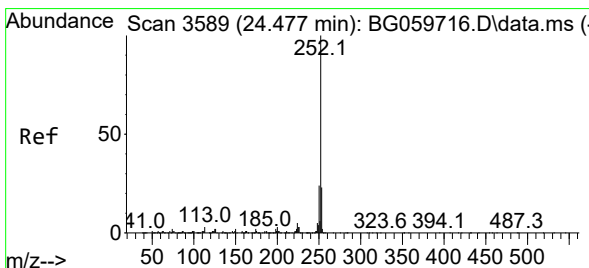
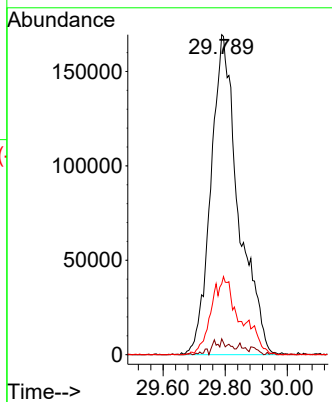
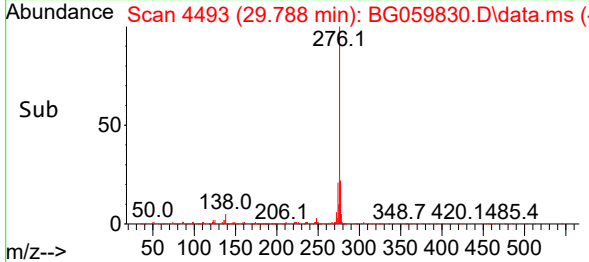
Tgt Ion: 276 Resp: 104825
 Ion Ratio Lower Upper
 276 100
 138 0.8 1.8 2.6
 277 0.0 9.8 14.6

Manual Integrations

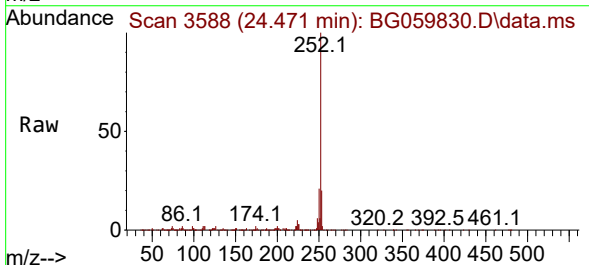
APPROVED

Reviewed By :Yogesh Patel 11/25/2023

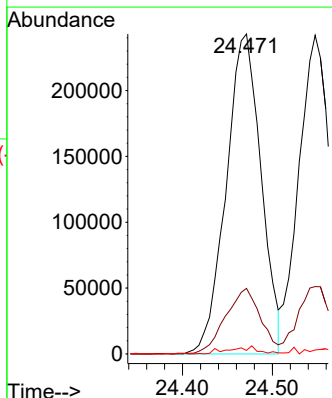
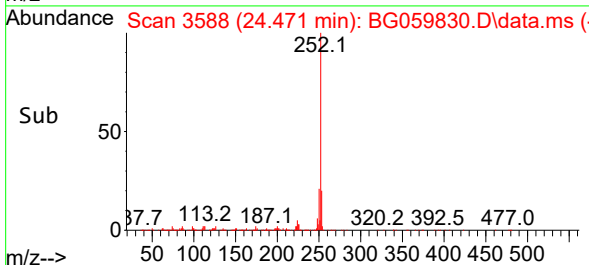
Supervised By :mohammad ahmed 11/25/2023

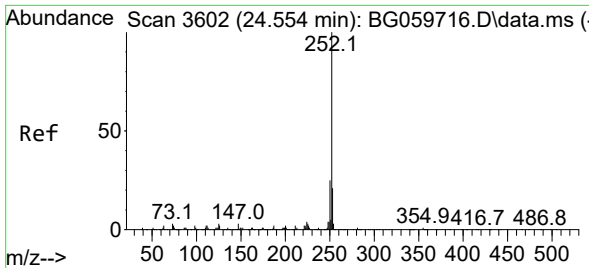


#88
 Benzo(b)fluoranthene
 Concen: 62.176 ng
 RT: 24.471 min Scan# 3588
 Delta R.T. -0.006 min
 Lab File: BG059830.D
 Acq: 22 Nov 2023 23:06



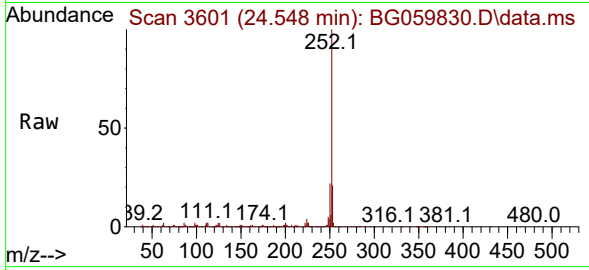
Tgt Ion: 252 Resp: 655818
 Ion Ratio Lower Upper
 252 100
 253 20.5 18.3 27.5
 125 1.1 1.4 2.0





#89
 Benzo(k)fluoranthene
 Concen: 56.603 ng
 RT: 24.548 min Scan# 30
 Delta R.T. -0.006 min
 Lab File: BG059830.D
 Acq: 22 Nov 2023 23:06

Instrument : BNA_G
 Client Sample Id : WC-SED-01MSD

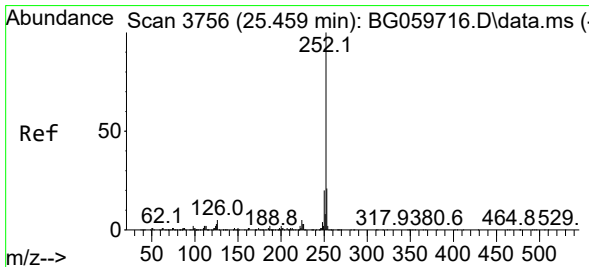
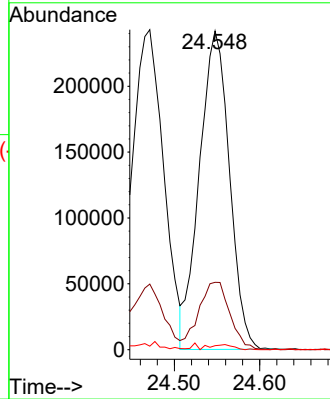
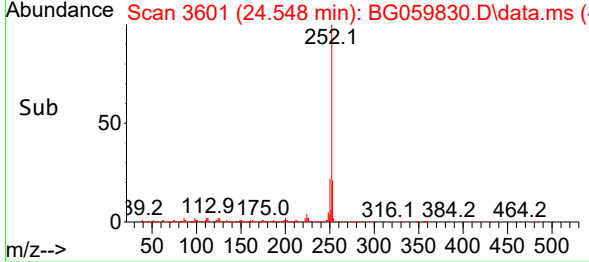


Tgt Ion: 252 Resp: 59024

Ion	Ratio	Lower	Upper
252	100		
253	21.2	17.1	25.7
125	1.3	2.2	3.2

Manual Integrations
 APPROVED

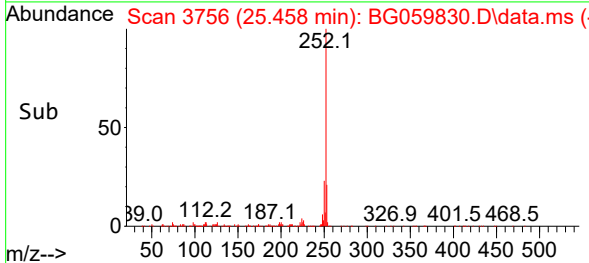
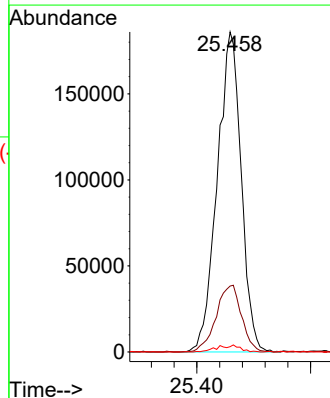
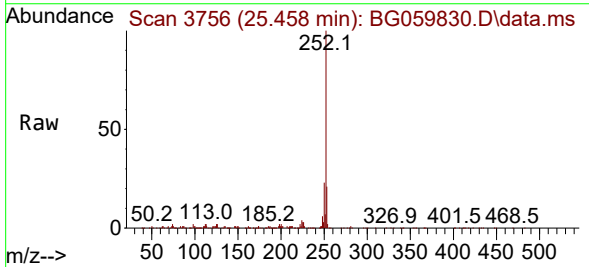
Reviewed By : Yogesh Patel 11/25/2023
 Supervised By : mohammad ahmed 11/25/2023

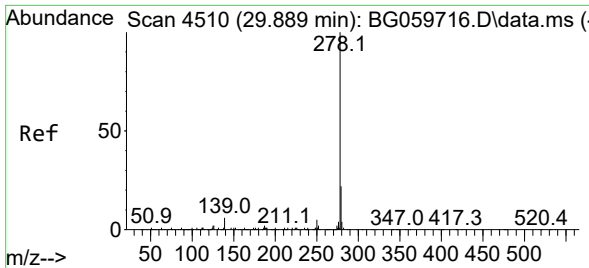


#90
 Benzo(a)pyrene
 Concen: 48.259 ng
 RT: 25.458 min Scan# 3756
 Delta R.T. -0.000 min
 Lab File: BG059830.D
 Acq: 22 Nov 2023 23:06

Tgt Ion: 252 Resp: 543255

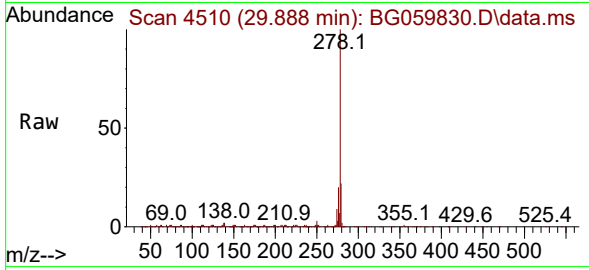
Ion	Ratio	Lower	Upper
252	100		
253	20.6	16.8	25.2
125	1.7	2.0	3.0





#91
 Dibenzo(a,h)anthracene
 Concen: 72.693 ng
 RT: 29.888 min Scan# 411
 Delta R.T. -0.000 min
 Lab File: BG059830.D
 Acq: 22 Nov 2023 23:06

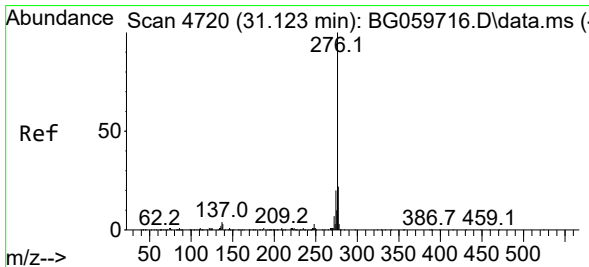
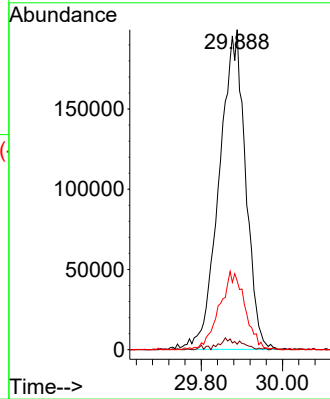
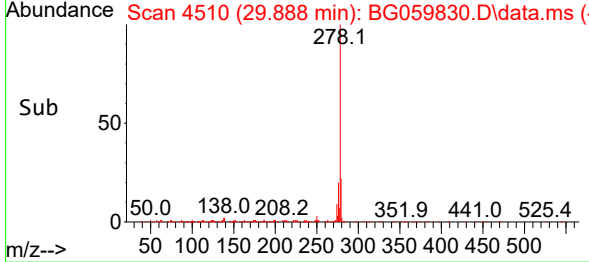
Instrument : BNA_G
 Client Sample Id : WC-SED-01MSD



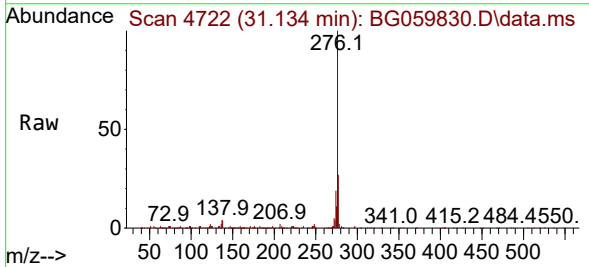
Tgt Ion: 278 Resp: 895570
 Ion Ratio Lower Upper
 278 100
 139 1.7 4.6 7.0#
 279 21.5 17.4 26.0#

Manual Integrations
 APPROVED

Reviewed By :Yogesh Patel 11/25/2023
 Supervised By :mohammad ahmed 11/25/2023



#92
 Benzo(g,h,i)perylene
 Concen: 68.521 ng
 RT: 31.134 min Scan# 4722
 Delta R.T. 0.011 min
 Lab File: BG059830.D
 Acq: 22 Nov 2023 23:06



Tgt Ion: 276 Resp: 800980
 Ion Ratio Lower Upper
 276 100
 277 27.0 17.3 25.9#
 138 4.4 2.6 4.0#

