

Data Path : Z:\SVOASRV\HPCHEM1\BNA G\DATA\BG112320\
 Data File : BG047436.D
 Acq On : 24 Nov 2020 7:10
 Operator : CG/JU
 Sample : L4749-16
 Misc :
 ALS Vial : 23 Sample Multiplier: 1

Instrument :
 BNA_G
 ClientSampleId :
 C0B15

Quant Time: Nov 24 08:04:15 2020
 Quant Method : Z:\SVOASRV\HPCHEM1\BNA_G\METHODS\SOM-EPA-BG111920MA.M
 Quant Title : SVOA CALIBRATION
 QLast Update : Tue Nov 24 07:08:43 2020
 Response via : Initial Calibration

Internal Standards	R.T.	QIon	Response	Conc	Units	Dev(Min)
1) 1,4-Dichlorobenzene-d4	8.27	152	35140	20.00	ng/ul	0.00
18) Naphthalene-d8	11.10	136	139828	20.00	ng/ul	0.00
36) Acenaphthene-d10	14.88	164	102488	20.00	ng/ul	0.00
62) Phenanthrene-d10	17.62	188	226338	20.00	ng/ul	0.00
78) Chrysene-d12	21.90	240	202354	20.00	ng/ul	0.00
86) Perylene-d12	25.31	264	215457	20.00	ng/ul	0.00

System Monitoring Compounds

3) 1,4-Dioxane-d8	3.61	96	3360	3.48	ng/uL	0.00
5) Phenol-d5	7.40	99	91445	25.95	ng/ul	0.00
7) Bis-(2-Chloroethyl)ether-d	7.59	67	50937	25.34	ng/ul	0.00
9) 2-Chlorophenol-d4	7.80	132	71251	30.15	ng/ul	0.00
13) 4-Methylphenol-d8	8.97	113	75038	27.71	ng/ul	0.00
19) Nitrobenzene-d5	9.44	128	35826	31.02	ng/ul	0.00
22) 2-Nitrophenol-d4	10.17	143	40311	31.99	ng/ul	0.00
26) 2,4-Dichlorophenol-d3	10.71	165	87174	30.21	ng/ul	0.00
29) 4-Chloroaniline-d4	11.22	131	93798	32.14	ng/ul	0.00
44) Dimethylphthalate-d6	14.28	166	253386	28.80	ng/ul	0.00
47) Acenaphthylene-d8	14.58	160	305662	30.06	ng/ul	0.00
52) 4-Nitrophenol-d4	15.04	143	32771	24.41	ng/ul	0.00
58) Fluorene-d10	15.87	176	231074	28.67	ng/ul	0.00
63) 4,6-Dinitro-2-methylphenol	15.97	200	15492	12.03	ng/ul	0.00
71) Anthracene-d10	17.72	188	339012	30.19	ng/ul	0.00
79) Pyrene-d10	19.98	212	374540	31.81	ng/ul	0.00
90) Benzo(a)pyrene-d12	25.07	264	368434	29.71	ng/ul	0.00

Target Compounds

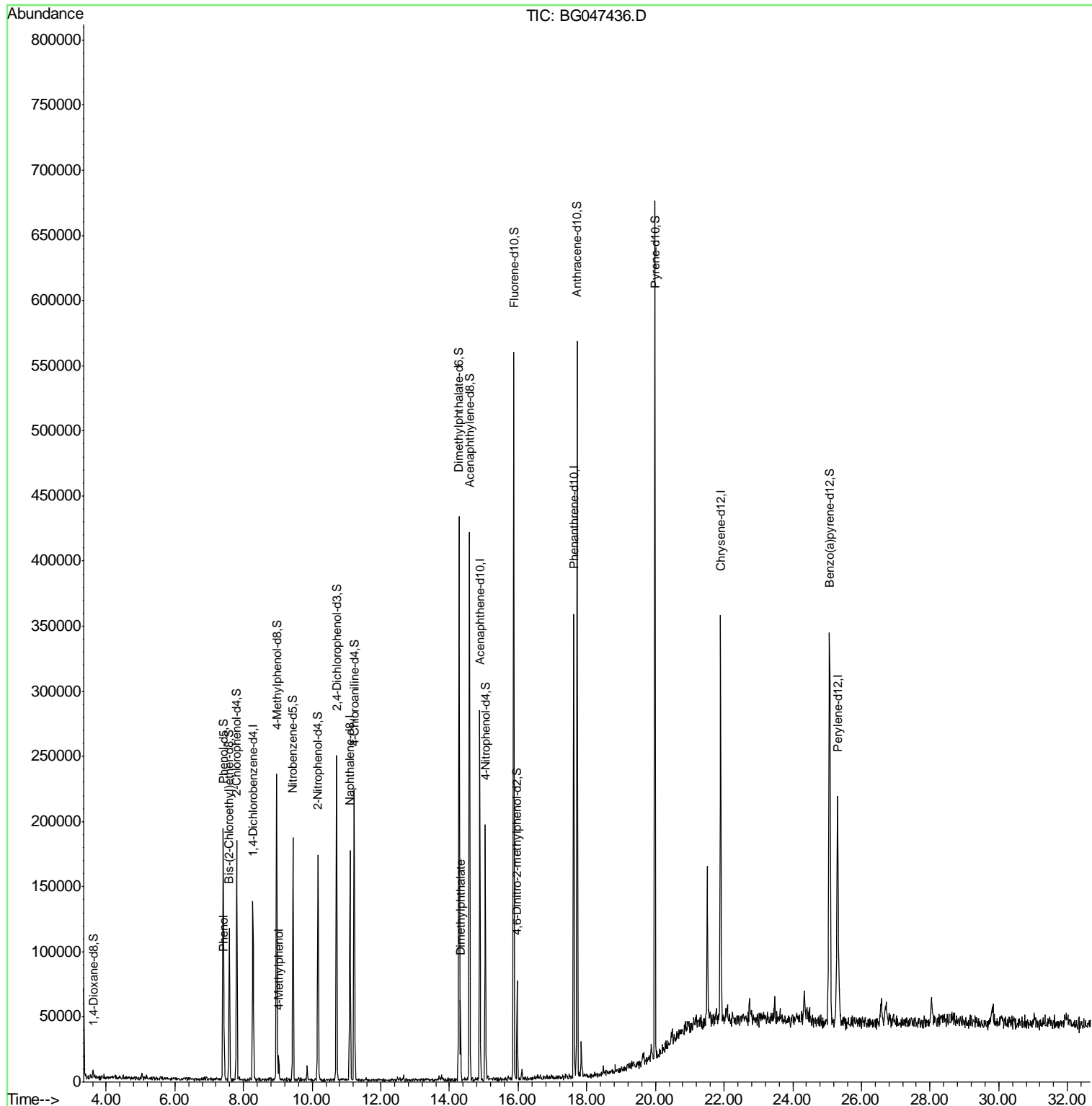
Target Compounds	R.T.	QIon	Response	Conc	Units	Ovalue
6) Phenol	7.43	94	13148	3.894	ng/ul	92
16) 4-Methylphenol	9.03	108	6266	2.276	ng/ul	80
45) Dimethylphthalate	14.33	163	35747	3.983	ng/ul	96

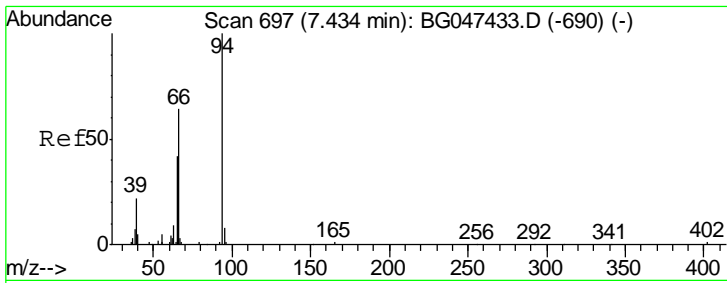
(#) = qualifier out of range (m) = manual integration (+) = signals summed

Data Path : Z:\SVOASRV\HPCHEM1\BNA G\DATA\BG112320\
 Data File : BG047436.D
 Acq On : 24 Nov 2020 7:10
 Operator : CG/JU
 Sample : L4749-16
 Misc :
 ALS Vial : 23 Sample Multiplier: 1

Instrument :
 BNA_G
 ClientSampled :
 C0B15

Quant Time: Nov 24 08:04:15 2020
 Quant Method : Z:\SVOASRV\HPCHEM1\BNA_G\METHODS\SOM-EPA-BG11920MA.M
 Quant Title : SVOA CALIBRATION
 QLast Update : Tue Nov 24 07:08:43 2020
 Response via : Initial Calibration

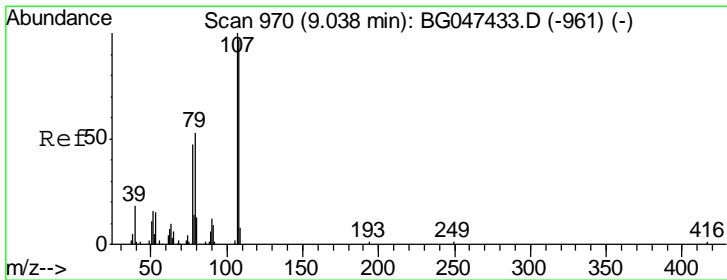
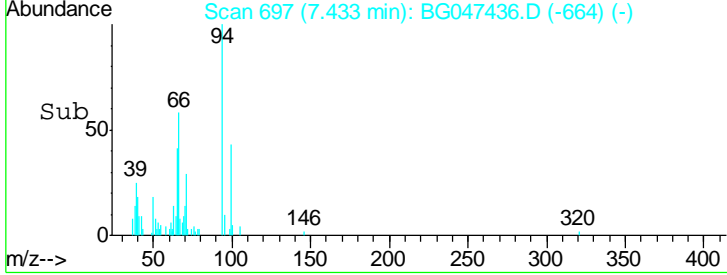
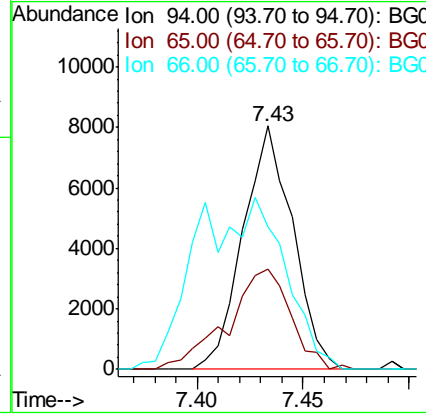
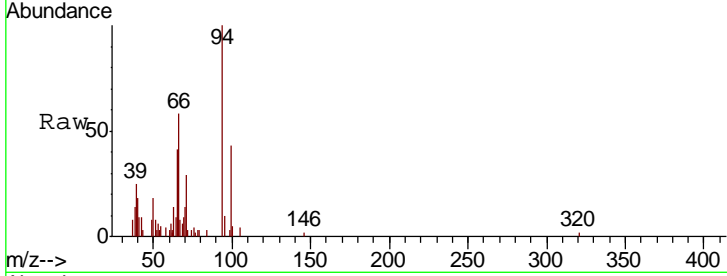




#6
 Phenol
 Concen: 3.894 ng/ul
 RT: 7.43 min Scan# 697
 Delta R.T. -0.00 min
 Lab File: BG047436.D
 Acq: 24 Nov 2020 7:10

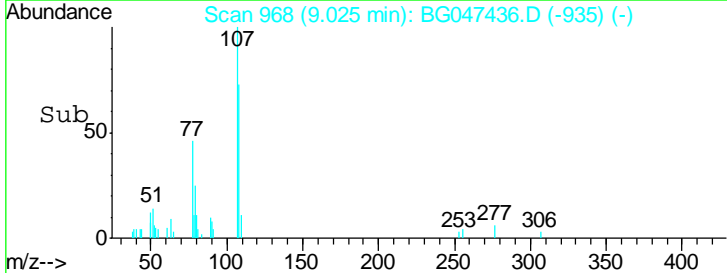
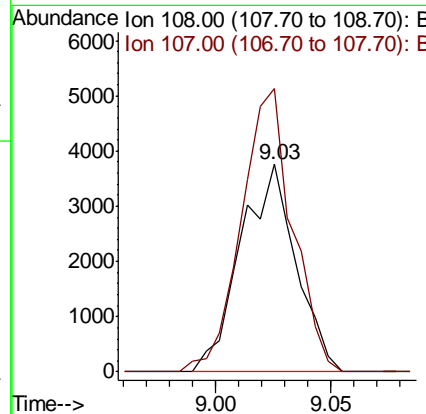
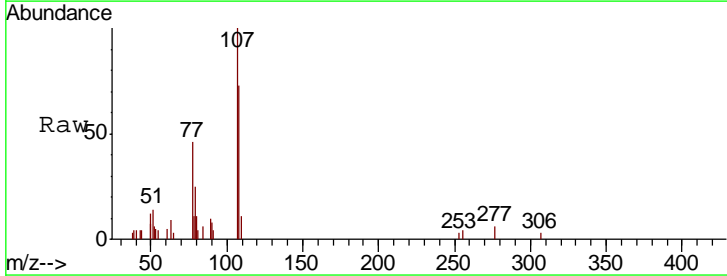
Instrument :
 BNA_G
ClientSampled :
 C0B15

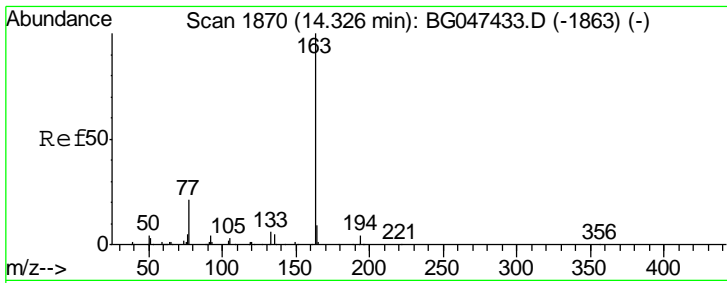
Tgt Ion	Resp	Lower	Upper
94	13148		
65	41.0	37.8	56.8
66	58.5	51.6	77.4



#16
 4-Methylphenol
 Concen: 2.276 ng/ul
 RT: 9.03 min Scan# 968
 Delta R.T. -0.00 min
 Lab File: BG047436.D
 Acq: 24 Nov 2020 7:10

Tgt Ion	Resp	Lower	Upper
108	6266		
107	136.5	91.5	137.3





#45
 Dimethylphthalate
 Concen: 3.983 ng/ul
 RT: 14.33 min Scan# 1870
 Delta R.T. -0.00 min
 Lab File: BG047436.D
 Acq: 24 Nov 2020 7:10

Instrument :
 BNA_G
 ClientSampled :
 COB15

Tot Ion	Ratio	Lower	Upper
163	100		
194	3.9	3.6	5.4
164	8.6	8.5	12.7

