

Data Path : Z:\SVOASRV\HPCHEM1\BNA G\DATA\BG112320\  
 Data File : BG047447.D  
 Acq On : 24 Nov 2020 15:26  
 Operator : CG/JU  
 Sample : L4751-06  
 Misc :  
 ALS Vial : 33 Sample Multiplier: 1

Instrument :  
 BNA\_G  
 ClientSampled :  
 C0BF9

Manual Integrations  
 APPROVED

mohammad  
 11/25/2020 12:48:20 PM

Quant Time: Nov 24 16:06:30 2020  
 Quant Method : Z:\SVOASRV\HPCHEM1\BNA\_G\METHODS\SOM-EPA-BG111920MA.M  
 Quant Title : SVOA CALIBRATION  
 QLast Update : Mon Nov 23 13:14:53 2020  
 Response via : Initial Calibration

Internal Standards	R.T.	QIon	Response	Conc	Units	Dev(Min)
1) 1,4-Dichlorobenzene-d4	8.28	152	32019	20.00	ng/ul	0.00
18) Naphthalene-d8	11.10	136	130399	20.00	ng/ul	0.00
36) Acenaphthene-d10	14.89	164	93039	20.00	ng/ul	0.00
62) Phenanthrene-d10	17.62	188	209074	20.00	ng/ul	0.00
78) Chrysene-d12	21.90	240	202481	20.00	ng/ul	0.00
86) Perylene-d12	25.30	264	213583	20.00	ng/ul	0.00

## System Monitoring Compounds

3) 1,4-Dioxane-d8	3.61	96	1559	1.77	ng/uL	0.00
5) Phenol-d5	7.41	99	37983	11.83	ng/ul	0.00
7) Bis-(2-Chloroethyl)ether-d	7.58	67	21870	11.94	ng/ul	0.00
9) 2-Chlorophenol-d4	7.80	132	29368	13.64	ng/ul	0.00
13) 4-Methylphenol-d8	8.96	113	23987	9.72	ng/ul	0.00
19) Nitrobenzene-d5	9.44	128	14675	13.62	ng/ul	0.00
22) 2-Nitrophenol-d4	10.17	143	17871	15.21	ng/ul	0.00
26) 2,4-Dichlorophenol-d3	10.71	165	35497	13.19	ng/ul	0.00
29) 4-Chloroaniline-d4	11.22	131	32977	12.12	ng/ul	0.00
44) Dimethylphthalate-d6	14.27	166	106604	13.35	ng/ul	0.00
47) Acenaphthylene-d8	14.58	160	128839	13.96	ng/ul	0.00
52) 4-Nitrophenol-d4	15.04	143	14050	11.53	ng/ul	0.00
58) Fluorene-d10	15.87	176	97211	13.29	ng/ul	0.00
63) 4,6-Dinitro-2-methylphenol	15.97	200	7778	6.54	ng/ul	0.00
71) Anthracene-d10	17.72	188	153930m	14.84	ng/ul	0.00
79) Pyrene-d10	19.98	212	185310	15.73	ng/ul	0.00
90) Benzo(a)pyrene-d12	25.07	264	180534	14.69	ng/ul	0.00

## Target Compounds

Target Compounds	R.T.	QIon	Response	Conc	Units	Ovalue
6) Phenol	7.44	94	6753	2.195	ng/ul#	83
45) Dimethylphthalate	14.32	163	24494	3.006	ng/ul#	98
76) Di-n-butylphthalate	18.55	149	22150	1.896	ng/ul#	96

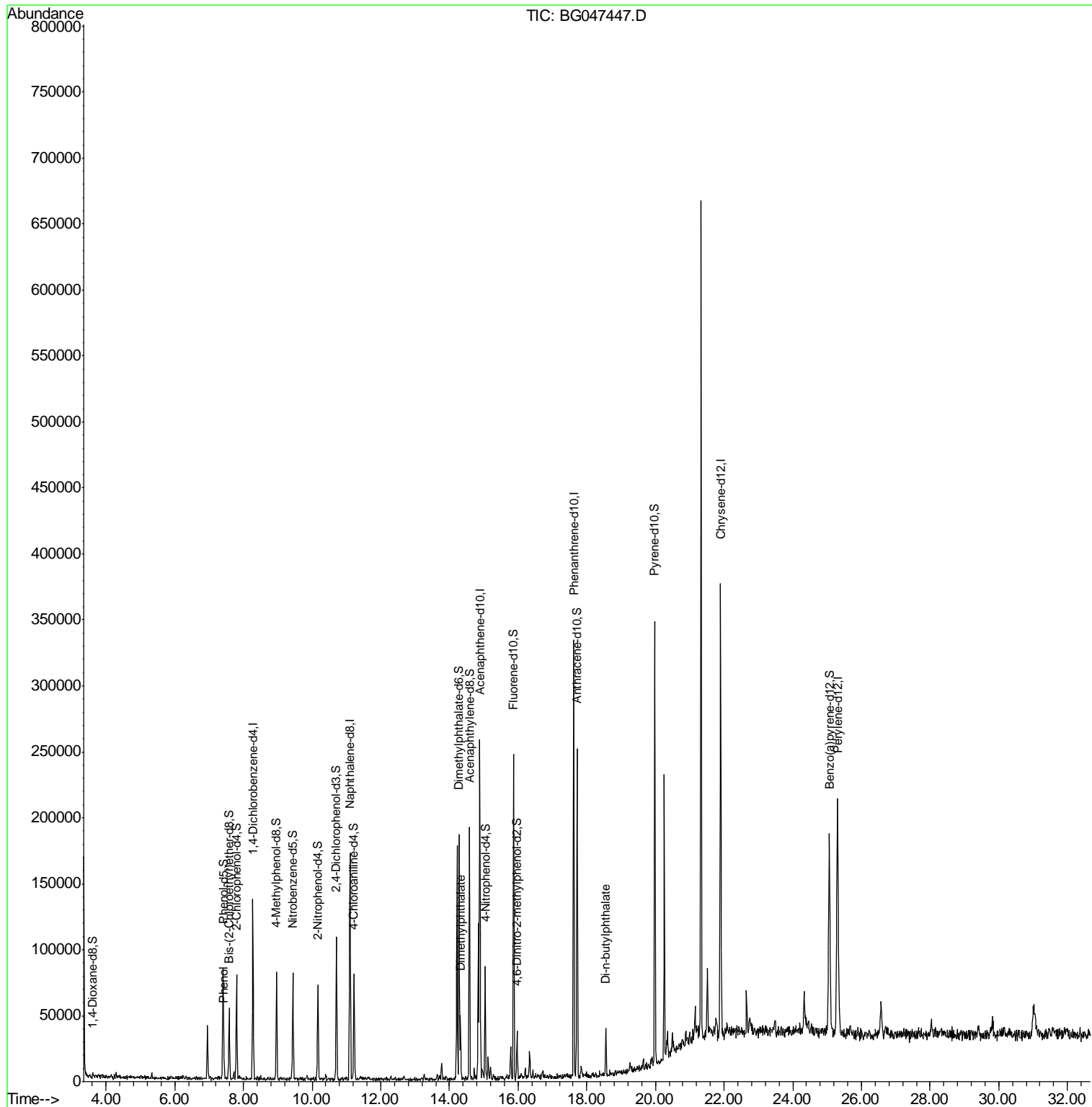
(#) = qualifier out of range (m) = manual integration (+) = signals summed

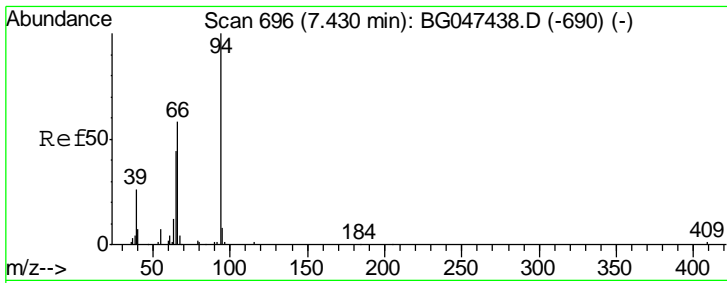
Data Path : Z:\SVOASRV\HPCHEM1\BNA G\DATA\BG112320\  
 Data File : BG047447.D  
 Acq On : 24 Nov 2020 15:26  
 Operator : CG/JU  
 Sample : L4751-06  
 Misc :  
 ALS Vial : 33 Sample Multiplier: 1

Instrument :  
 BNA\_G  
 ClientSampled :  
 C0BF9

Manual Integrations  
**APPROVED**  
 mohammad  
 11/25/2020 12:48:20 PM

Quant Time: Nov 24 16:06:30 2020  
 Quant Method : Z:\SVOASRV\HPCHEM1\BNA\_G\METHODS\SOM-EPA-BG11920MA.M  
 Quant Title : SVOA CALIBRATION  
 QLast Update : Mon Nov 23 13:14:53 2020  
 Response via : Initial Calibration





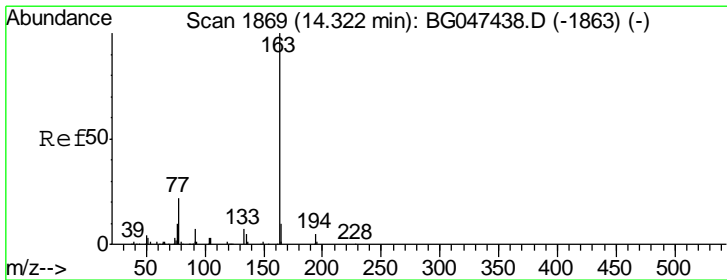
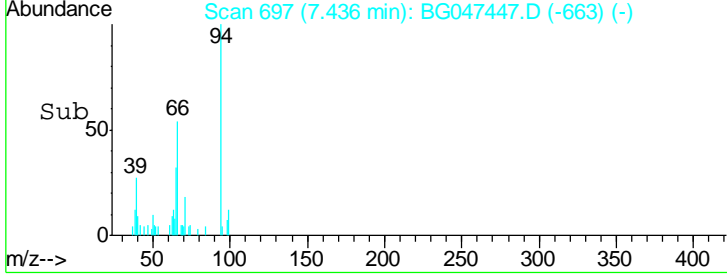
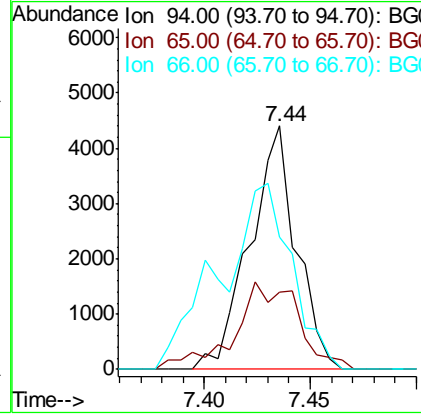
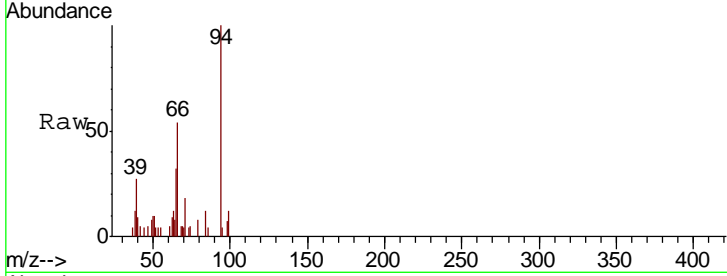
#6  
 Phenol  
 Concen: 2.195 ng/ul  
 RT: 7.44 min Scan# 697  
 Delta R.T. -0.00 min  
 Lab File: BG047447.D  
 Acq: 24 Nov 2020 15:26

**Instrument :**  
 BNA\_G  
**ClientSampled :**  
 C0BF9

Tgt Ion	Resp	Lower	Upper
94	6753		
65	31.8	37.8	56.8#
66	54.2	51.6	77.4

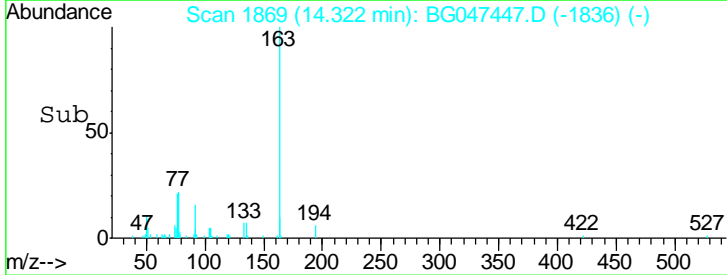
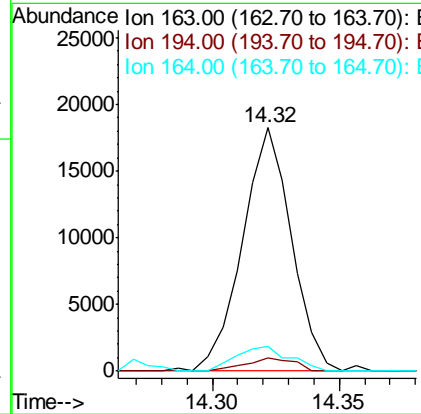
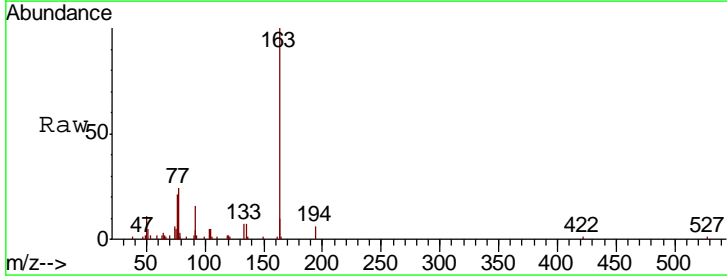
**Manual Integrations**  
**APPROVED**

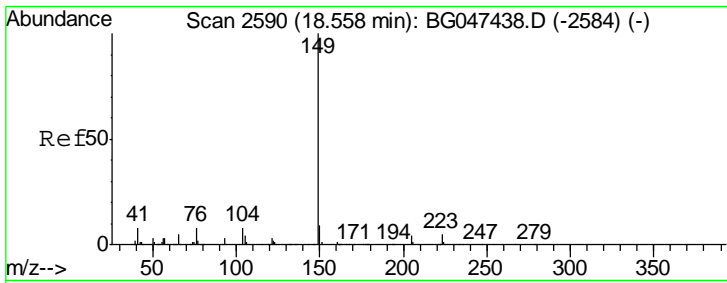
mohammad  
 11/25/2020 12:48:20 PM



#45  
 Dimethylphthalate  
 Concen: 3.006 ng/ul  
 RT: 14.32 min Scan# 1869  
 Delta R.T. -0.01 min  
 Lab File: BG047447.D  
 Acq: 24 Nov 2020 15:26

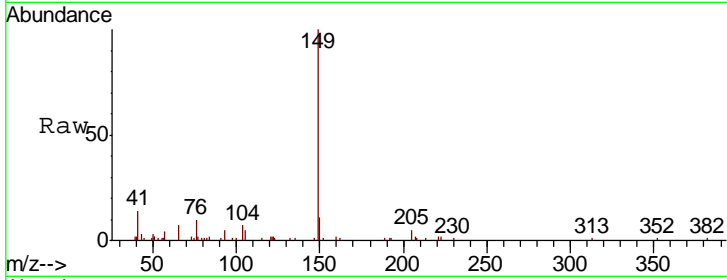
Tgt Ion	Resp	Lower	Upper
163	24494		
194	5.6	3.6	5.4#
164	9.9	8.5	12.7





#76  
 Di-n-butylphthalate  
 Concen: 1.896 ng/ul  
 RT: 18.55 min Scan# 2589  
 Delta R.T. -0.01 min  
 Lab File: BG047447.D  
 Acq: 24 Nov 2020 15:26

**Instrument :**  
 BNA\_G  
**ClientSampled :**  
 C0BF9



Tot Ion: 149 Resp: 22150

Ion	Ratio	Lower	Upper
149	100		
150	11.0	7.1	10.7#
104	6.9	6.1	9.1

**Manual Integrations**  
**APPROVED**  
 mohammad  
 11/25/2020 12:48:20 PM

