

Data Path : Z:\SVOASRV\HPCHEM1\BNA G\DATA\BG112320\
 Data File : BG047445.D
 Acq On : 24 Nov 2020 14:04
 Operator : CG/JU
 Sample : L4751-12
 Misc :
 ALS Vial : 31 Sample Multiplier: 1

Instrument :
 BNA_G
 ClientSampleId :
 C0B83

Integration Parameters: LSCINT.P

Integrator: RTE
 Smoothing : OFF
 Sampling : 1
 Start Thrs: 0.2
 Stop Thrs : 0

Filtering: 5
 Min Area: 0.1 % of largest Peak
 Max Peaks: 100
 Peak Location: TOP

If leading or trailing edge < 100 prefer < Baseline drop else tangent >
 Peak separation: 5

Method : Z:\SVOASRV\HPCHEM1\BNA_G\METHODS\SOM-EPA-BG111920MA.M
 Title : SVOA CALIBRATION

Signal : TIC

peak #	R.T. min	first scan	max scan	last scan	PK TY	peak height	corr. area	corr. % max.	% of total
1	3.611	44	46	51	rVB4	3891	4187	0.73%	0.077%
2	3.829	82	83	86	rBV2	1858	1840	0.32%	0.034%
3	3.893	92	94	95	rBV2	3059	1901	0.33%	0.035%
4	4.134	133	135	136	rVB	3302	1708	0.30%	0.031%
5	4.281	157	160	169	rVB6	4091	7839	1.37%	0.144%
6	4.346	169	171	175	rBV3	2358	3012	0.53%	0.055%
7	4.534	201	203	204	rBV3	2426	1598	0.28%	0.029%
8	4.563	204	208	211	rVV	1656	2184	0.38%	0.040%
9	4.951	272	274	276	rVB2	1957	1627	0.28%	0.030%
10	4.974	276	278	282	rBV2	2104	1699	0.30%	0.031%
11	5.015	282	285	286	rBV	1814	1736	0.30%	0.032%
12	5.168	310	311	314	rVB2	2219	1504	0.26%	0.028%
13	5.327	336	338	342	rBV2	2842	3606	0.63%	0.066%
14	5.656	392	394	398	rBV	2942	3225	0.56%	0.059%
15	5.891	432	434	437	rBV	2012	2677	0.47%	0.049%
16	5.932	440	441	443	rBV	1958	1528	0.27%	0.028%
17	6.038	458	459	462	rVB	1959	1567	0.27%	0.029%
18	6.308	503	505	508	rBV	1906	2330	0.41%	0.043%
19	6.355	511	513	515	rBV2	1702	1714	0.30%	0.031%
20	6.614	554	557	560	rBV	1454	2017	0.35%	0.037%
21	6.807	587	590	591	rBV	1720	1807	0.32%	0.033%
22	6.943	610	613	614	rVB2	2308	2101	0.37%	0.038%
23	7.037	627	629	633	rVB2	2064	1570	0.27%	0.029%
24	7.207	656	658	659	rBV2	2831	1664	0.29%	0.030%
25	7.407	685	692	704	rVB2	78235	160253	27.96%	2.935%
26	7.542	712	715	716	rBV2	1573	1728	0.30%	0.032%
27	7.583	717	722	729	rVV2	50831	81223	14.17%	1.487%
28	7.665	733	736	737	rBV2	1806	1730	0.30%	0.032%
29	7.695	740	741	744	rVB	2194	1511	0.26%	0.028%
30	7.800	752	759	768	rBV2	77593	140302	24.48%	2.569%
31	8.018	794	796	800	rVB	2135	1986	0.35%	0.036%
32	8.276	833	840	846	rBV	138590	238528	41.62%	4.368%
33	8.582	890	892	895	rBV2	2038	1855	0.32%	0.034%
34	8.611	895	897	900	rVB2	1670	1642	0.29%	0.030%

Data Path : Z:\SVOASRV\HPCHEM1\BNA_G\DATA\BG112320\
 Data File : BG047445.D
 Acq On : 24 Nov 2020 14:04
 Operator : CG/JU
 Sample : L4751-12
 Misc :
 ALS Vial : 31 Sample Multiplier: 1

Instrument :
 BNA_G
 ClientSampleId :
 C0B83

Integration Parameters: LSCINT.P

Integrator: RTE
 Smoothing : OFF
 Sampling : 1
 Start Thrs: 0.2
 Stop Thrs : 0

Filtering: 5
 Min Area: 0.1 % of largest Peak
 Max Peaks: 100
 Peak Location: TOP

If leading or trailing edge < 100 prefer < Baseline drop else tangent >
 Peak separation: 5

Method : Z:\SVOASRV\HPCHEM1\BNA_G\METHODS\SOM-EPA-BG111920MA.M
 Title : SVOA CALIBRATION

35	8.699	909	912	913	rBV2	3208	3087	0.54%	0.057%
36	8.723	913	916	920	rVB	2155	2420	0.42%	0.044%
37	8.758	920	922	923	rBV	2403	1576	0.28%	0.029%
38	8.964	949	957	964	rBV3	95347	160417	27.99%	2.938%
39	9.169	990	992	995	rBV	1806	2300	0.40%	0.042%
40	9.293	1009	1013	1014	rBV	1727	1622	0.28%	0.030%
41	9.375	1023	1027	1029	rVB	1940	1738	0.30%	0.032%
42	9.440	1031	1038	1047	rVB2	78252	143136	24.98%	2.621%
43	9.845	1101	1107	1112	rBV2	5774	9999	1.74%	0.183%
44	9.963	1125	1127	1129	rBV2	1910	1996	0.35%	0.037%
45	10.168	1156	1162	1169	rVB3	69155	125419	21.88%	2.297%
46	10.309	1184	1186	1190	rVB3	1789	2383	0.42%	0.044%
47	10.456	1208	1211	1215	rBV	2047	3230	0.56%	0.059%
48	10.521	1219	1222	1225	rBV	1240	1648	0.29%	0.030%
49	10.709	1247	1254	1260	rBV2	107428	194652	33.97%	3.565%
50	11.032	1308	1309	1311	rBV	1950	1669	0.29%	0.031%
51	11.102	1314	1321	1328	rVB	171539	317112	55.33%	5.807%
52	11.220	1334	1341	1350	rBV2	88263	167053	29.15%	3.059%
53	11.320	1356	1358	1362	rVB2	2825	2894	0.50%	0.053%
54	11.420	1372	1375	1376	rBV	2776	2293	0.40%	0.042%
55	11.437	1376	1378	1382	rVB2	2968	3146	0.55%	0.058%
56	11.802	1437	1440	1442	rBV2	1803	2625	0.46%	0.048%
57	11.854	1445	1449	1451	rBV	1985	1984	0.35%	0.036%
58	12.007	1472	1475	1476	rBV	2248	1768	0.31%	0.032%
59	12.037	1479	1480	1484	rVV	1610	2008	0.35%	0.037%
60	12.072	1484	1486	1489	rVB	1437	1628	0.28%	0.030%
61	12.225	1510	1512	1515	rBV2	1651	2110	0.37%	0.039%
62	12.483	1554	1556	1560	rVB	1863	1600	0.28%	0.029%
63	12.612	1577	1578	1582	rVB	2158	2284	0.40%	0.042%
64	12.836	1613	1616	1617	rBV	1774	1911	0.33%	0.035%
65	12.900	1623	1627	1629	rBV	1662	2099	0.37%	0.038%
66	13.112	1661	1663	1666	rBV	2107	2833	0.49%	0.052%
67	13.693	1760	1762	1763	rBV2	2342	1637	0.29%	0.030%
68	13.964	1804	1808	1812	rBV	1313	2601	0.45%	0.048%
69	14.040	1818	1821	1822	rBV	1940	2024	0.35%	0.037%
70	14.187	1845	1846	1849	rVB	2307	1874	0.33%	0.034%
71	14.275	1856	1861	1866	rBV	180329	264071	46.08%	4.836%

Data Path : Z:\SVOASRV\HPCHEM1\BNA G\DATA\BG112320\
 Data File : BG047445.D
 Acq On : 24 Nov 2020 14:04
 Operator : CG/JU
 Sample : L4751-12
 Misc :
 ALS Vial : 31 Sample Multiplier: 1

Instrument :
 BNA_G
 ClientSampleId :
 C0B83

Integration Parameters: LSCINT.P

Integrator: RTE
 Smoothing : OFF
 Sampling : 1
 Start Thrs: 0.2
 Stop Thrs : 0

Filtering: 5
 Min Area: 0.1 % of largest Peak
 Max Peaks: 100
 Peak Location: TOP

If leading or trailing edge < 100 prefer < Baseline drop else tangent >
 Peak separation: 5

Method : Z:\SVOASRV\HPCHEM1\BNA_G\METHODS\SOM-EPA-BG111920MA.M
 Title : SVOA CALIBRATION

72	14.322	1866	1869	1877	rVB	38438	50228	8.76%	0.920%
73	14.434	1886	1888	1891	rVB	2516	1997	0.35%	0.037%
74	14.581	1906	1913	1920	rBV	184595	288905	50.41%	5.291%
75	14.792	1948	1949	1952	rBV	1851	1710	0.30%	0.031%
76	14.880	1958	1964	1973	rBV	269758	444758	77.61%	8.145%
77	15.039	1985	1991	1997	rBV3	68775	113806	19.86%	2.084%
78	15.192	2016	2017	2020	rBV3	1975	1576	0.28%	0.029%
79	15.274	2028	2031	2033	rVV	5528	4552	0.79%	0.083%
80	15.697	2101	2103	2107	rBV2	2487	2887	0.50%	0.053%
81	15.744	2109	2111	2112	rBV	2086	1588	0.28%	0.029%
82	15.867	2126	2132	2138	rBV	235478	350775	61.21%	6.423%
83	15.932	2140	2143	2144	rBV	1559	1556	0.27%	0.028%
84	15.967	2145	2149	2159	rVB3	27692	41961	7.32%	0.768%
85	16.102	2171	2172	2176	rVB	3685	2714	0.47%	0.050%
86	16.155	2179	2181	2183	rBV	1718	1825	0.32%	0.033%
87	16.314	2207	2208	2211	rBV	1747	1559	0.27%	0.029%
88	16.390	2220	2221	2223	rBV	1896	1582	0.28%	0.029%
89	16.420	2223	2226	2228	rVB	2243	2694	0.47%	0.049%
90	16.731	2277	2279	2282	rVB	2003	1764	0.31%	0.032%
91	17.078	2333	2338	2339	rBV	2192	3439	0.60%	0.063%
92	17.354	2382	2385	2387	rBV2	2318	2983	0.52%	0.055%
93	17.618	2424	2430	2437	rVB	373508	555313	96.90%	10.169%
94	17.677	2437	2440	2441	rBV2	2290	2249	0.39%	0.041%
95	17.712	2441	2446	2454	rVB	250028	387270	67.58%	7.092%
96	17.842	2463	2468	2475	rBV4	11573	23270	4.06%	0.426%
97	17.971	2488	2490	2492	rBV	3872	3340	0.58%	0.061%
98	18.159	2520	2522	2524	rBV	2663	2168	0.38%	0.040%
99	19.980	2827	2832	2839	rVB	322114	457014	79.75%	8.369%
100	21.896	3153	3158	3165	rVB	330018	573083	100.00%	10.494%

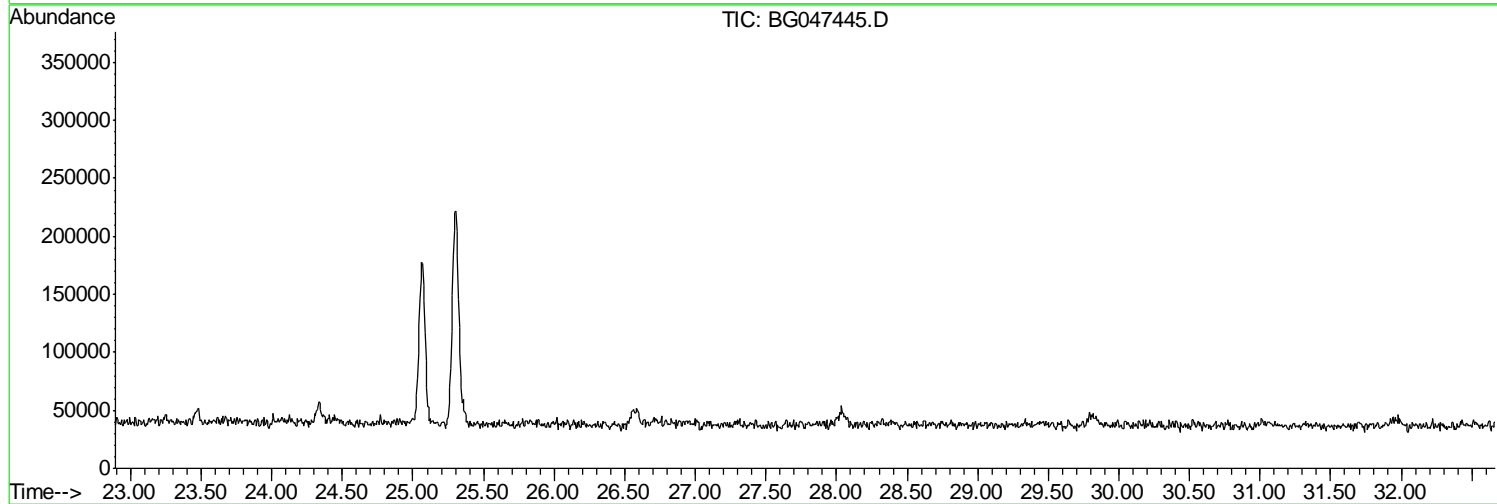
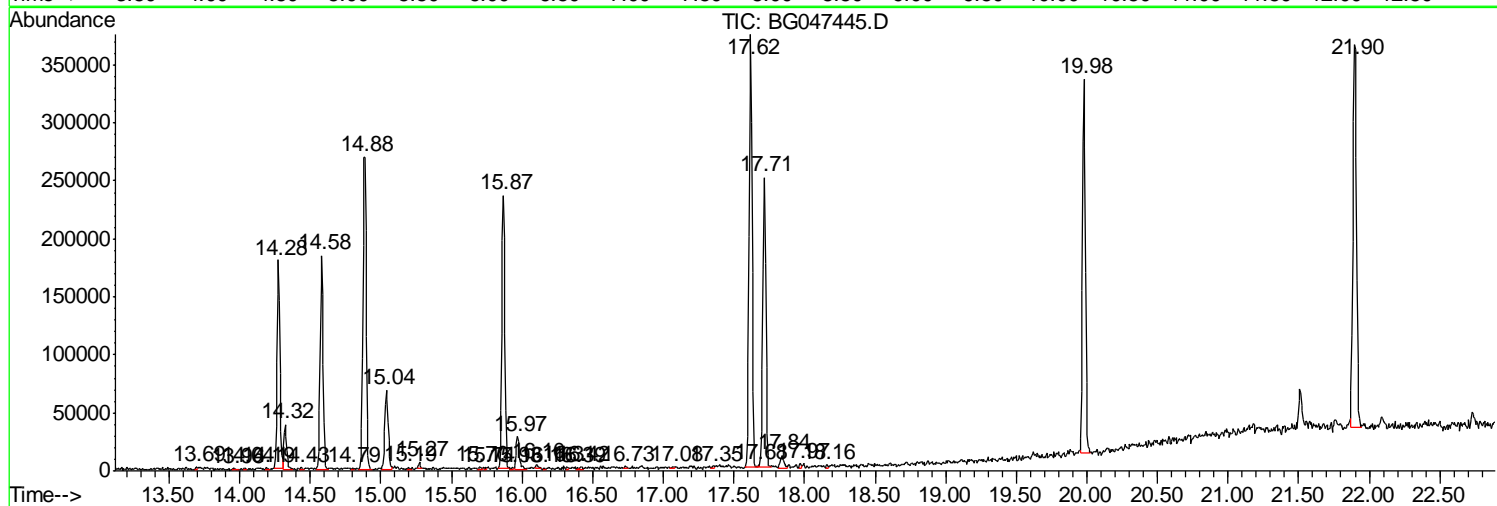
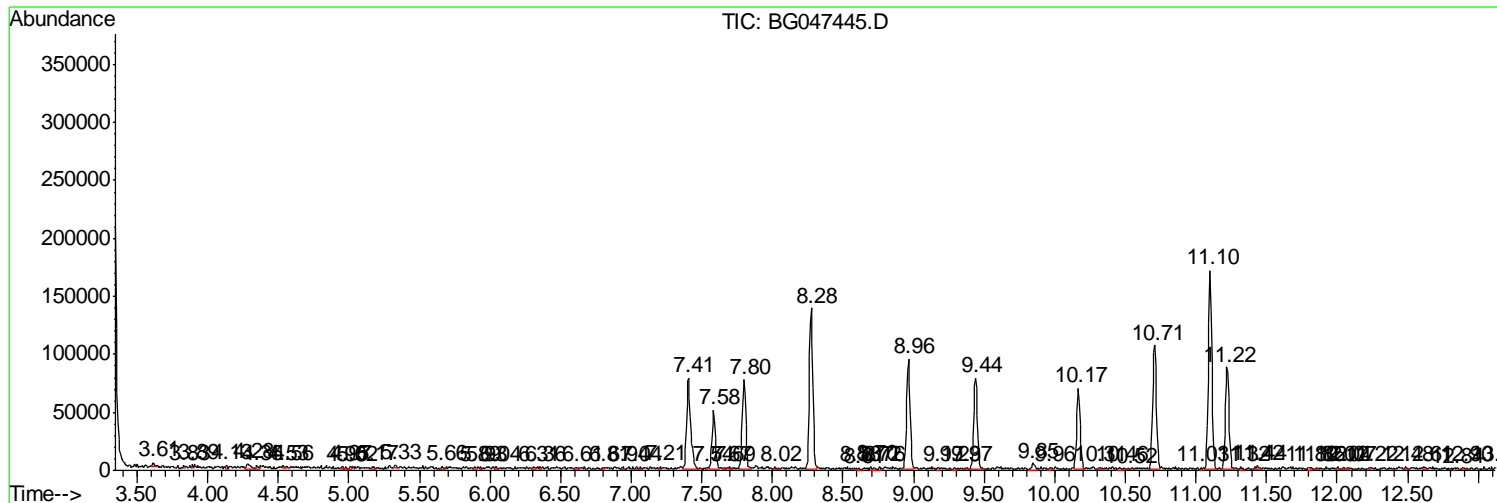
Sum of corrected areas: 5460812

Data Path : Z:\SVOASRV\HPCHEM1\BNA G\DATA\BG112320\
 Data File : BG047445.D
 Acq On : 24 Nov 2020 14:04
 Operator : CG/JU
 Sample : L4751-12
 Misc :
 ALS Vial : 31 Sample Multiplier: 1

Instrument :
 BNA_G
 ClientSampleId :
 C0B83

Quant Method : Z:\SVOASRV\HPCHEM1\BNA_G\METHODS\SOM-EPA-BG11920MA.M
 Quant Title : SVOA CALIBRATION

TIC Library : C:\DATABASE\NIST11.L
 TIC Integration Parameters: LSCINT.P



Data Path : Z:\SVOASRV\HPCHEM1\BNA_G\DATA\BG112320\
Data File : BG047445.D
Acq On : 24 Nov 2020 14:04
Operator : CG/JU
Sample : L4751-12
Misc :
ALS Vial : 31 Sample Multiplier: 1

Instrument :
BNA_G
ClientSampleId :
C0B83

Quant Method : Z:\SVOASRV\HPCHEM1\BNA_G\METHODS\SOM-EPA-BG111920MA.M
Quant Title : SVOA CALIBRATION

TIC Library : C:\DATABASE\NIST11.L
TIC Integration Parameters: LSCINT.P

No Library Search Compounds Detected

Data Path : Z:\SVOASRV\HPCHEM1\BNA_G\DATA\BG112320\
Data File : BG047445.D
Acq On : 24 Nov 2020 14:04
Operator : CG/JU
Sample : L4751-12
Misc :
ALS Vial : 31 Sample Multiplier: 1

Instrument :
BNA_G
ClientSampleId :
C0B83

Quant Method : Z:\SVOASRV\HPCHEM1\BNA_G\METHODS\SOM-EPA-BG111920MA.M
Quant Title : SVOA CALIBRATION

TIC Library : C:\DATABASE\NIST11.L
TIC Integration Parameters: LSCINT.P

TIC Top Hit name	RT	EstConc	Units	Response	--Internal Standard--			
					#	RT	Resp	Conc
