

Data Path : Z:\SVOASRV\HPCHEM1\BNA G\DATA\BG112320\
 Data File : BG047449.D
 Acq On : 24 Nov 2020 16:46
 Operator : CG/JU
 Sample : L4837-10
 Misc :
 ALS Vial : 35 Sample Multiplier: 1

Instrument :
 BNA_G
 ClientSampleId :
 SVOC-GPC2-BLANK

Integration Parameters: LSCINT.P

Integrator: RTE
 Smoothing : OFF
 Sampling : 1
 Start Thrs: 0.2
 Stop Thrs : 0

Filtering: 5
 Min Area: 0.1 % of largest Peak
 Max Peaks: 100
 Peak Location: TOP

If leading or trailing edge < 100 prefer < Baseline drop else tangent >
 Peak separation: 5

Method : Z:\SVOASRV\HPCHEM1\BNA_G\METHODS\SOM-EPA-BG111920MA.M
 Title : SVOA CALIBRATION

Signal : TIC

peak #	R.T. min	first scan	max scan	last scan	PK TY	peak height	corr. area	corr. % max.	% of total
1	3.854	86	88	90	rBV3	2506	2559	0.44%	0.106%
2	4.319	165	167	170	rBV2	2145	2040	0.35%	0.084%
3	4.383	176	178	179	rBV	2629	1609	0.27%	0.066%
4	5.194	314	316	321	rBV2	2114	2804	0.48%	0.116%
5	5.358	341	344	348	rBV2	2106	3525	0.60%	0.146%
6	5.687	398	400	403	rBV2	1870	2451	0.42%	0.101%
7	5.711	403	404	407	rVB2	2487	1688	0.29%	0.070%
8	5.846	425	427	430	rVB3	2713	1518	0.26%	0.063%
9	6.022	456	457	461	rBV3	1988	1963	0.34%	0.081%
10	6.069	461	465	467	rBV2	1422	1575	0.27%	0.065%
11	6.563	547	549	551	rVB	3439	2430	0.41%	0.100%
12	6.592	551	554	555	rBV2	3345	2969	0.51%	0.123%
13	6.616	555	558	560	rBV3	1970	2062	0.35%	0.085%
14	6.980	616	620	622	rBV2	1999	2504	0.43%	0.103%
15	7.033	628	629	631	rBV	2194	1863	0.32%	0.077%
16	7.691	737	741	743	rBV2	1707	2693	0.46%	0.111%
17	7.715	743	745	749	rVB	1513	1816	0.31%	0.075%
18	7.750	749	751	754	rBV2	1926	2113	0.36%	0.087%
19	7.820	761	763	765	rBV	1886	1519	0.26%	0.063%
20	7.955	784	786	787	rBV	2423	1469	0.25%	0.061%
21	7.991	790	792	795	rBV2	2177	2365	0.40%	0.098%
22	8.108	809	812	814	rBV	1788	2069	0.35%	0.086%
23	8.273	833	840	847	rVB	148599	266425	45.50%	11.010%
24	8.631	898	901	903	rBV	2342	2477	0.42%	0.102%
25	8.954	954	956	959	rVB	1608	2140	0.37%	0.088%
26	9.001	962	964	966	rVV	1666	1783	0.30%	0.074%
27	9.037	968	970	974	rVB	2218	1692	0.29%	0.070%
28	9.136	986	987	989	rBV2	1997	1689	0.29%	0.070%
29	9.213	999	1000	1003	rVB	2498	2095	0.36%	0.087%
30	9.313	1015	1017	1021	rBV	1092	1620	0.28%	0.067%
31	9.495	1046	1048	1051	rVB2	1490	1528	0.26%	0.063%
32	9.930	1121	1122	1127	rVB	1930	1660	0.28%	0.069%
33	10.259	1174	1178	1179	rBV	1322	1769	0.30%	0.073%
34	10.511	1218	1221	1222	rBV	1454	1620	0.28%	0.067%

Data Path : Z:\SVOASRV\HPCHEM1\BNA G\DATA\BG112320\
 Data File : BG047449.D
 Acq On : 24 Nov 2020 16:46
 Operator : CG/JU
 Sample : L4837-10
 Misc :
 ALS Vial : 35 Sample Multiplier: 1

Instrument :
 BNA_G
 ClientSampleId :
 SVOC-GPC2-BLANK

Integration Parameters: LSCINT.P

Integrator: RTE
 Smoothing : OFF
 Sampling : 1
 Start Thrs: 0.2
 Stop Thrs : 0

Filtering: 5
 Min Area: 0.1 % of largest Peak
 Max Peaks: 100
 Peak Location: TOP

If leading or trailing edge < 100 prefer < Baseline drop else tangent >
 Peak separation: 5

Method : Z:\SVOASRV\HPCHEM1\BNA_G\METHODS\SOM-EPA-BG111920MA.M
 Title : SVOA CALIBRATION

35	10.640	1240	1243	1244	rBV	2078	1962	0.34%	0.081%
36	10.723	1254	1257	1258	rBV2	1744	1948	0.33%	0.081%
37	10.852	1277	1279	1284	rVV	1666	2298	0.39%	0.095%
38	10.887	1284	1285	1289	rVB	1839	1542	0.26%	0.064%
39	10.952	1295	1296	1300	rBV	1443	1799	0.31%	0.074%
40	11.099	1314	1321	1330	rVB	193702	354566	60.55%	14.653%
41	11.340	1359	1362	1364	rBV	1990	2185	0.37%	0.090%
42	11.510	1389	1391	1394	rVB	2274	1603	0.27%	0.066%
43	11.545	1394	1397	1398	rVB	1834	1624	0.28%	0.067%
44	11.569	1398	1401	1403	rBV	1713	2175	0.37%	0.090%
45	11.604	1405	1407	1410	rBV	1714	1483	0.25%	0.061%
46	11.663	1415	1417	1421	rVB	1732	1531	0.26%	0.063%
47	11.763	1430	1434	1435	rVB2	1977	1703	0.29%	0.070%
48	11.827	1443	1445	1447	rBV	2665	1858	0.32%	0.077%
49	11.992	1471	1473	1476	rVB	2116	1749	0.30%	0.072%
50	12.133	1495	1497	1500	rVB	1219	1425	0.24%	0.059%
51	12.227	1510	1513	1515	rBV	2478	2363	0.40%	0.098%
52	12.427	1545	1547	1552	rVB	2239	2078	0.35%	0.086%
53	12.579	1570	1573	1578	rBV	1175	1535	0.26%	0.063%
54	12.920	1629	1631	1635	rBV	1488	1797	0.31%	0.074%
55	12.955	1635	1637	1639	rVB	1945	1495	0.26%	0.062%
56	13.173	1672	1674	1677	rBV	1943	2079	0.36%	0.086%
57	13.232	1682	1684	1686	rBV	1716	1740	0.30%	0.072%
58	13.367	1704	1707	1708	rBV	1426	1578	0.27%	0.065%
59	13.443	1717	1720	1722	rBV	1725	1492	0.25%	0.062%
60	13.484	1725	1727	1729	rVB	3179	1778	0.30%	0.073%
61	13.543	1734	1737	1738	rBV	1725	1425	0.24%	0.059%
62	14.089	1827	1830	1832	rVB	1231	1402	0.24%	0.058%
63	14.230	1853	1854	1858	rBV	1543	1605	0.27%	0.066%
64	14.465	1892	1894	1897	rBV	1615	1705	0.29%	0.070%
65	14.571	1909	1912	1915	rBV	1310	1947	0.33%	0.080%
66	14.883	1958	1965	1972	rVB	296984	473403	80.84%	19.564%
67	14.941	1972	1975	1976	rBV	1969	1455	0.25%	0.060%
68	14.988	1981	1983	1985	rBV	2124	1874	0.32%	0.077%
69	15.065	1991	1996	1998	rBV	1216	2021	0.35%	0.084%
70	15.141	2008	2009	2011	rBV	1445	1488	0.25%	0.061%
71	15.752	2107	2113	2115	rBV	1152	1768	0.30%	0.073%

Data Path : Z:\SVOASRV\HPCHEM1\BNA_G\DATA\BG112320\
 Data File : BG047449.D
 Acq On : 24 Nov 2020 16:46
 Operator : CG/JU
 Sample : L4837-10
 Misc :
 ALS Vial : 35 Sample Multiplier: 1

Instrument :
 BNA_G
 ClientSampleId :
 SVOC-GPC2-BLANK

Integration Parameters: LSCINT.P

Integrator: RTE
 Smoothing : OFF
 Sampling : 1
 Start Thrs: 0.2
 Stop Thrs : 0

Filtering: 5
 Min Area: 0.1 % of largest Peak
 Max Peaks: 100
 Peak Location: TOP

If leading or trailing edge < 100 prefer < Baseline drop else tangent >
 Peak separation: 5

Method : Z:\SVOASRV\HPCHEM1\BNA_G\METHODS\SOM-EPA-BG111920MA.M
 Title : SVOA CALIBRATION

72	16.028	2157	2160	2161	rBV	2366	1559	0.27%	0.064%
73	16.240	2194	2196	2198	rBV	2943	2613	0.45%	0.108%
74	16.387	2218	2221	2222	rBV	2003	1925	0.33%	0.080%
75	16.569	2250	2252	2254	rBV	2567	1478	0.25%	0.061%
76	16.645	2264	2265	2270	rVV	1613	1975	0.34%	0.082%
77	16.686	2270	2272	2275	rVB	1748	1670	0.29%	0.069%
78	16.857	2297	2301	2302	rBV	2541	2209	0.38%	0.091%
79	16.886	2305	2306	2309	rBV2	2095	1829	0.31%	0.076%
80	17.062	2335	2336	2338	rBV	2041	1562	0.27%	0.065%
81	17.109	2341	2344	2347	rBV	1496	1889	0.32%	0.078%
82	17.145	2347	2350	2352	rBV	1357	1404	0.24%	0.058%
83	17.186	2355	2357	2359	rBV	1590	1717	0.29%	0.071%
84	17.262	2369	2370	2374	rVB	2374	2162	0.37%	0.089%
85	17.297	2374	2376	2378	rBV	2270	1937	0.33%	0.080%
86	17.462	2402	2404	2407	rBV	2031	2257	0.39%	0.093%
87	17.615	2424	2430	2437	rVB	366483	565570	96.58%	23.372%
88	17.715	2445	2447	2450	rBV	2791	2288	0.39%	0.095%
89	17.814	2463	2464	2466	rBV	2143	1430	0.24%	0.059%
90	17.985	2490	2493	2496	rBV	2480	3501	0.60%	0.145%
91	18.102	2512	2513	2515	rBV	1567	1453	0.25%	0.060%
92	18.232	2533	2535	2537	rBV2	2247	2015	0.34%	0.083%
93	18.249	2537	2538	2540	rBV	2561	2145	0.37%	0.089%
94	19.125	2683	2687	2689	rVB3	3718	4062	0.69%	0.168%
95	21.898	3153	3159	3165	rVB2	335573	585585	100.00%	24.200%

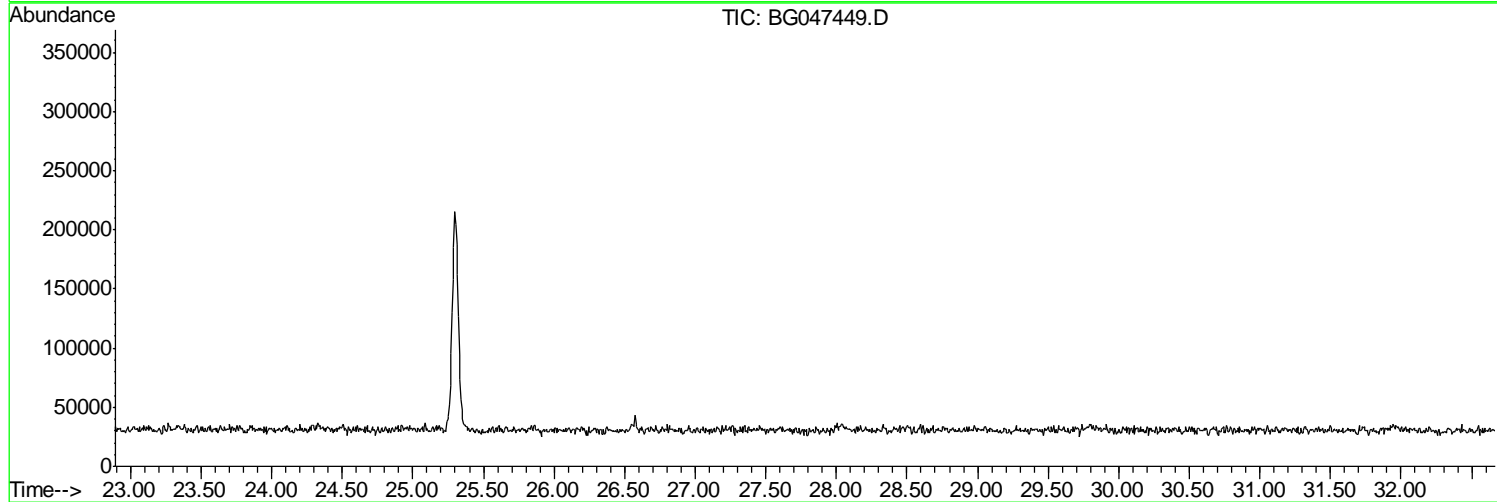
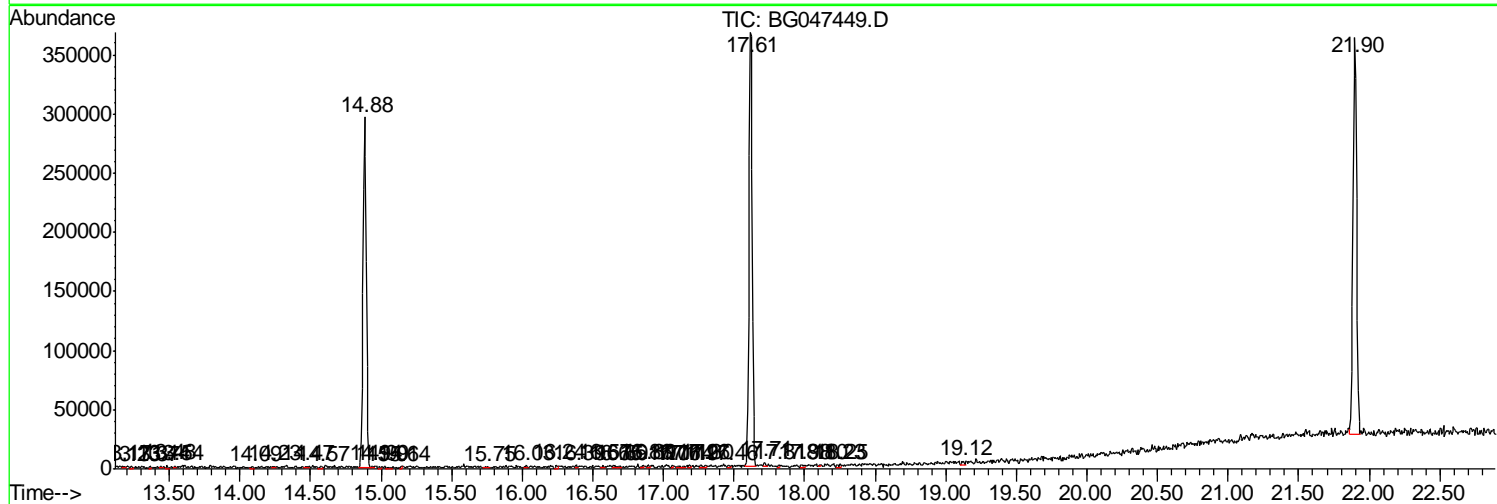
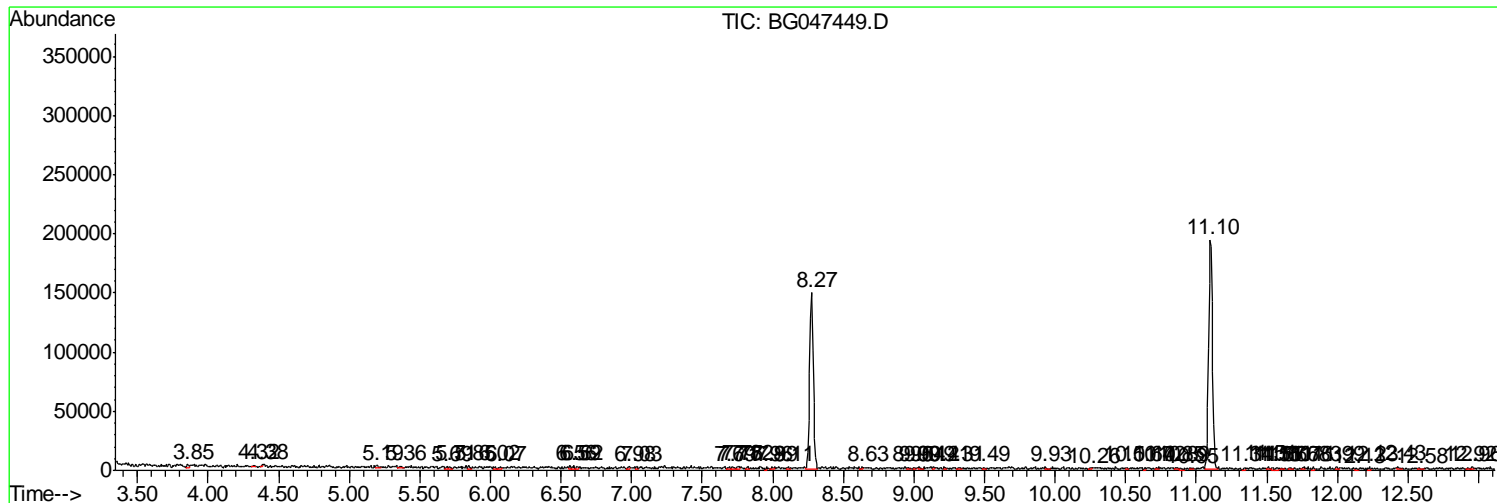
Sum of corrected areas: 2419816

Data Path : Z:\SVOASRV\HPCHEM1\BNA G\DATA\BG112320\
 Data File : BG047449.D
 Acq On : 24 Nov 2020 16:46
 Operator : CG/JU
 Sample : L4837-10
 Misc :
 ALS Vial : 35 Sample Multiplier: 1

Instrument :
 BNA_G
ClientSampled :
 SVOC-GPC2-BLANK

Quant Method : Z:\SVOASRV\HPCHEM1\BNA_G\METHODS\SOM-EPA-BG111920MA.M
 Quant Title : SVOA CALIBRATION

TIC Library : C:\DATABASE\NIST11.L
 TIC Integration Parameters: LSCINT.P



Data Path : Z:\SVOASRV\HPCHEM1\BNA_G\DATA\BG112320\
Data File : BG047449.D
Acq On : 24 Nov 2020 16:46
Operator : CG/JU
Sample : L4837-10
Misc :
ALS Vial : 35 Sample Multiplier: 1

Instrument :
BNA_G
ClientSampleId :
SVOC-GPC2-BLANK

Quant Method : Z:\SVOASRV\HPCHEM1\BNA_G\METHODS\SOM-EPA-BG111920MA.M
Quant Title : SVOA CALIBRATION

TIC Library : C:\DATABASE\NIST11.L
TIC Integration Parameters: LSCINT.P

No Library Search Compounds Detected

Data Path : Z:\SVOASRV\HPCHEM1\BNA_G\DATA\BG112320\
Data File : BG047449.D
Acq On : 24 Nov 2020 16:46
Operator : CG/JU
Sample : L4837-10
Misc :
ALS Vial : 35 Sample Multiplier: 1

Instrument :
BNA_G
ClientSampleId :
SVOC-GPC2-BLANK

Quant Method : Z:\SVOASRV\HPCHEM1\BNA_G\METHODS\SOM-EPA-BG111920MA.M
Quant Title : SVOA CALIBRATION

TIC Library : C:\DATABASE\NIST11.L
TIC Integration Parameters: LSCINT.P

TIC Top Hit name	RT	EstConc	Units	Response	--Internal Standard--			
					#	RT	Resp	Conc
