

Data Path : Z:\svoasrv\HPCHEM1\BNA_G\Data\BG112822\
 Data File : BG055813.D
 Acq On : 28 Nov 2022 20:31
 Operator : CG/JU
 Sample : N5752-01
 Misc :
 ALS Vial : 10 Sample Multiplier: 1

Instrument :
 BNA_G
 ClientSampleId :
 B-7S

Integration Parameters: rteint.p
 Integrator: RTE
 Smoothing : ON Filtering: 5
 Sampling : 1 Min Area: 3 % of largest Peak
 Start Thrs: 0.2 Max Peaks: 100
 Stop Thrs : 0 Peak Location: TOP

If leading or trailing edge < 100 prefer < Baseline drop else tangent >
 Peak separation: 5

Method : Z:\svoasrv\HPCHEM1\BNA_G\Methods\8270-BG111622.M
 Title : ASP BNA STANDARDS FOR 5 POINT CALIBRATION

Signal : TIC: BG055813.D\data.ms

peak #	R.T. min	first scan	max scan	last scan	PK TY	peak height	corr. area	corr. % max.	% of total
1	3.528	35	41	50	rVB	44189	84591	2.69%	0.576%
2	5.279	330	339	346	rBV	123593	195209	6.22%	1.330%
3	5.761	414	421	430	rBV	522056	864080	27.51%	5.886%
4	7.377	687	696	715	rBV	509890	913012	29.07%	6.219%
5	8.229	828	841	848	rBV	198887	339974	10.82%	2.316%
6	9.398	1032	1040	1054	rVB	329481	620977	19.77%	4.230%
7	11.055	1315	1322	1329	rBV	261009	466018	14.84%	3.174%
8	12.154	1503	1509	1519	rBV3	38495	102006	3.25%	0.695%
9	13.476	1727	1734	1741	rVB	902137	1361445	43.35%	9.274%
10	13.652	1758	1764	1768	rBV5	38925	81571	2.60%	0.556%
11	14.275	1865	1870	1872	rBV	110511	173125	5.51%	1.179%
12	14.304	1872	1875	1880	rVB	127712	181976	5.79%	1.240%
13	14.580	1917	1922	1929	rBV	251275	547027	17.42%	3.726%
14	14.680	1935	1939	1943	rVB	134608	193101	6.15%	1.315%
15	14.850	1964	1968	1975	rVB	386574	618632	19.70%	4.214%
16	15.632	2098	2101	2104	rBV	183142	202954	6.46%	1.382%
17	16.067	2172	2175	2179	rVB	305670	416491	13.26%	2.837%
18	16.337	2217	2221	2230	rBV	575517	935271	29.78%	6.371%
19	16.548	2253	2257	2262	rVB	1070250	1514237	48.21%	10.315%
20	17.377	2393	2398	2402	rBV	1132672	1727836	55.01%	11.770%
21	20.021	2845	2848	2855	rVB	2208272	3140895	100.00%	21.395%

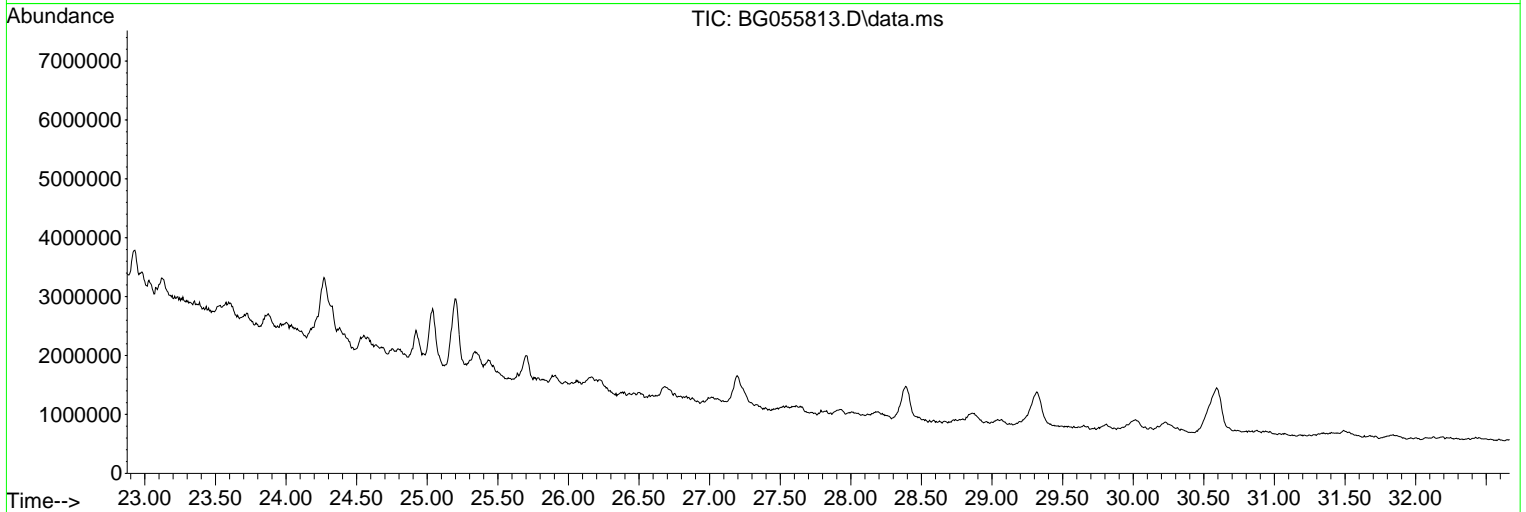
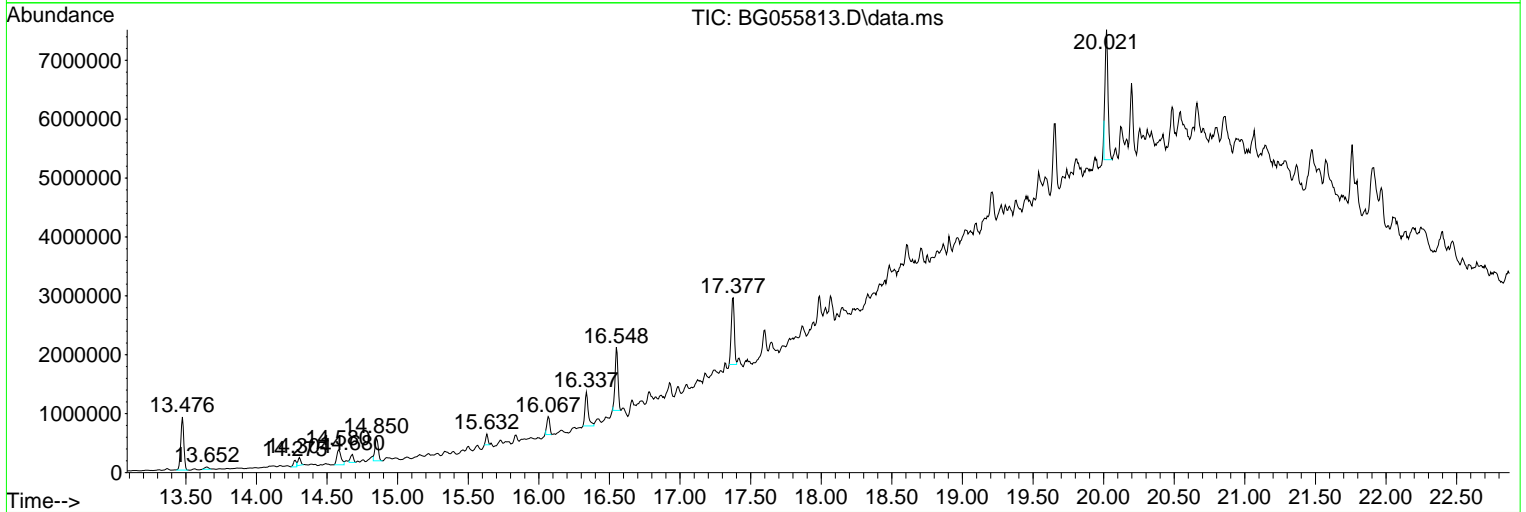
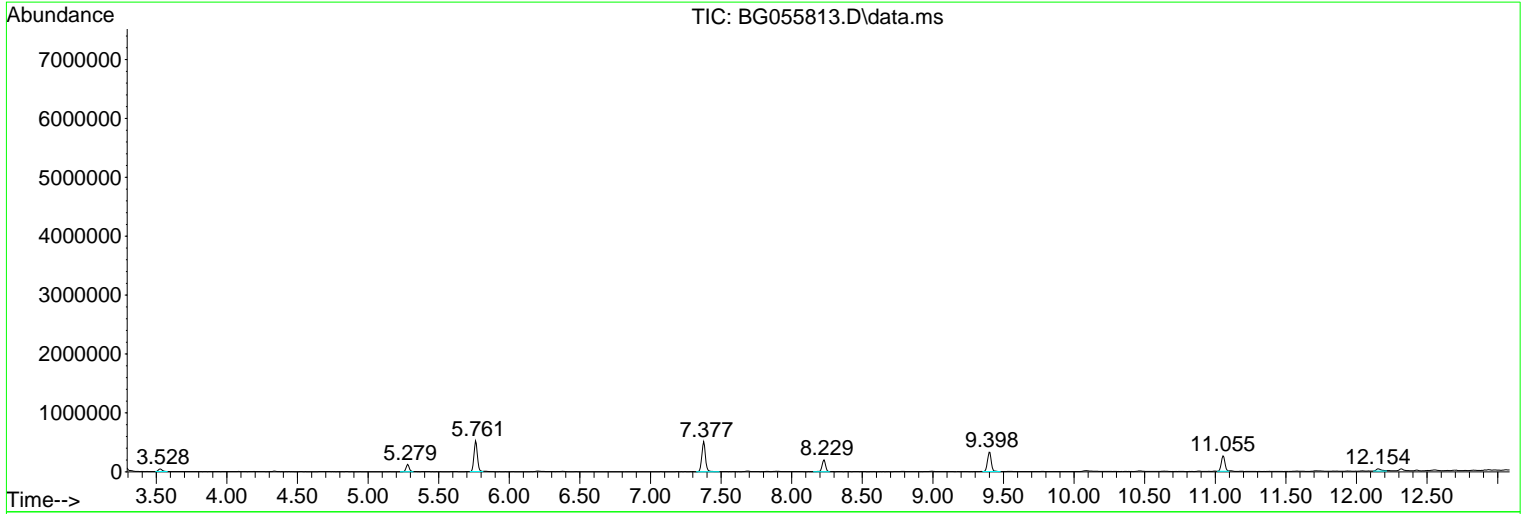
Sum of corrected areas: 14680428

Data Path : Z:\svoasrv\HPCHEM1\BNA_G\Data\BG112822\
 Data File : BG055813.D
 Acq On : 28 Nov 2022 20:31
 Operator : CG/JU
 Sample : N5752-01
 Misc :
 ALS Vial : 10 Sample Multiplier: 1

Instrument :
 BNA_G
 ClientSampleId :
 B-7S

Quant Method : Z:\svoasrv\HPCHEM1\BNA_G\Methods\8270-BG11622.M
 Quant Title : ASP BNA STANDARDS FOR 5 POINT CALIBRATION

TIC Library : C:\Database\NIST20.L
 TIC Integration Parameters: LSCINT.P



Data Path : Z:\svoasrv\HPCHEM1\BNA_G\Data\BG112822\
 Data File : BG055813.D
 Acq On : 28 Nov 2022 20:31
 Operator : CG/JU
 Sample : N5752-01
 Misc :
 ALS Vial : 10 Sample Multiplier: 1

Instrument :
 BNA_G
 ClientSampleId :
 B-7S

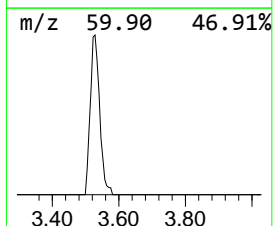
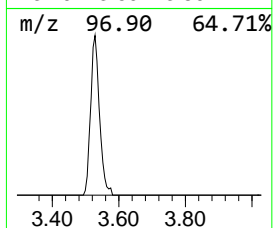
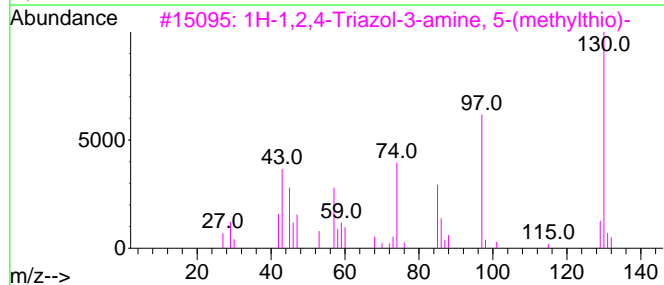
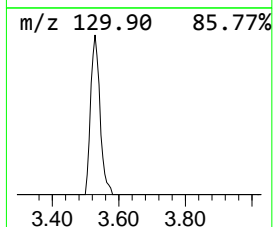
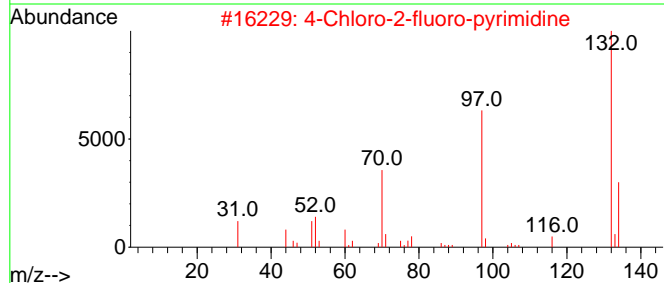
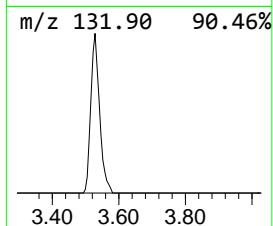
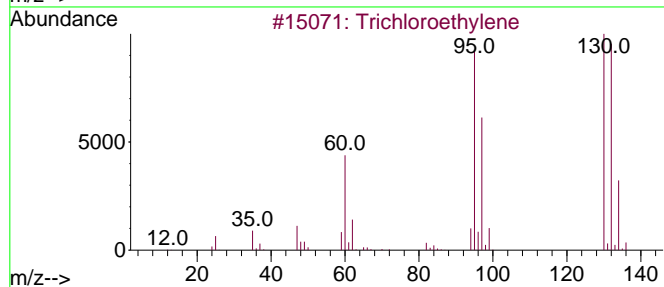
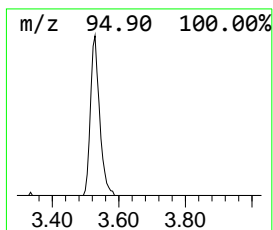
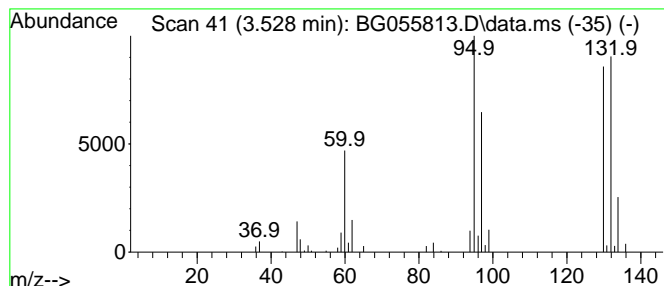
Quant Method : Z:\svoasrv\HPCHEM1\BNA_G\Methods\8270-BG11622.M
 Quant Title : ASP BNA STANDARDS FOR 5 POINT CALIBRATION

TIC Library : C:\Database\NIST20.L
 TIC Integration Parameters: LSCINT.P

 Peak Number 1 Trichloroethylene Concentration Rank 9

R.T.	EstConc	Area	Relative to ISTD	R.T.
3.528	4.98 ng	84591	1,4-Dichlorobenzene-d4	8.229

Hit#	of 5	Tentative ID	MW	MolForm	CAS#	Qual
1		Trichloroethylene	130	C2HCl3	000079-01-6	95
2		4-Chloro-2-fluoro-pyrimidine	132	C4H2ClFN2	051422-00-5	22
3		1H-1,2,4-Triazol-3-amine, 5-(met...	130	C3H6N4S	045534-08-5	12
4		Benzene, 1-chloro-4-fluoro-	130	C6H4ClF	000352-33-0	10
5		Methylphosphonothioicchlorofluoride	132	CH3ClFPS	027127-27-1	10



Data Path : Z:\svoasrv\HPCHEM1\BNA_G\Data\BG112822\
 Data File : BG055813.D
 Acq On : 28 Nov 2022 20:31
 Operator : CG/JU
 Sample : N5752-01
 Misc :
 ALS Vial : 10 Sample Multiplier: 1

Instrument :
 BNA_G
 ClientSampleId :
 B-7S

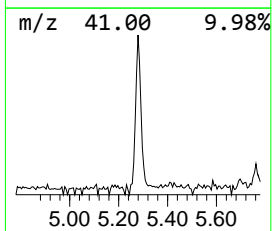
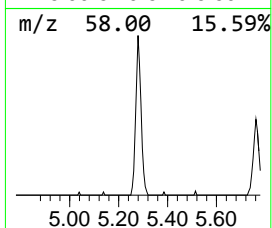
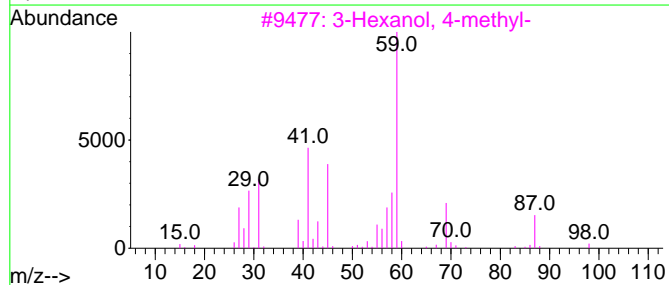
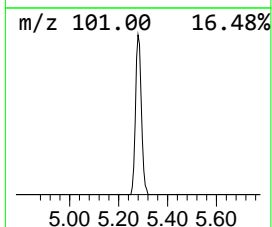
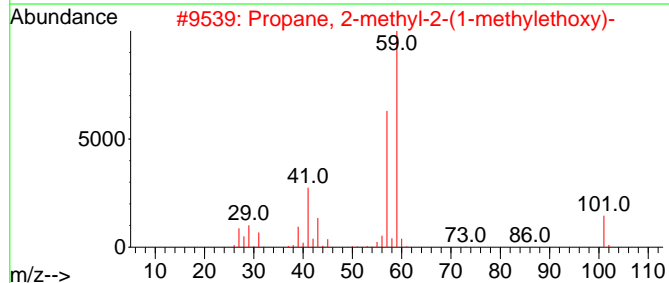
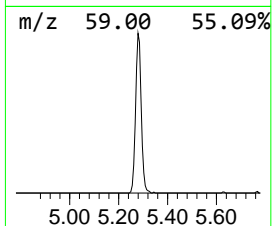
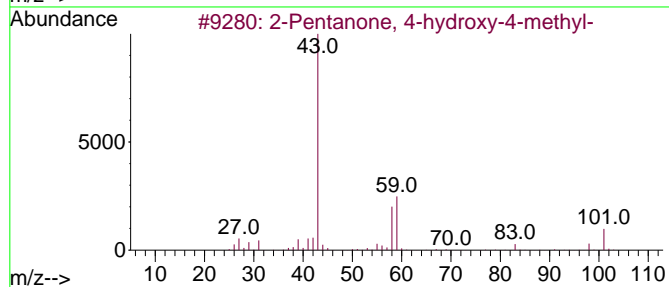
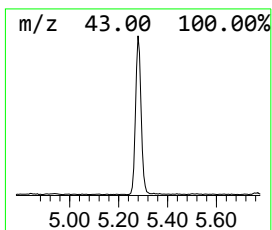
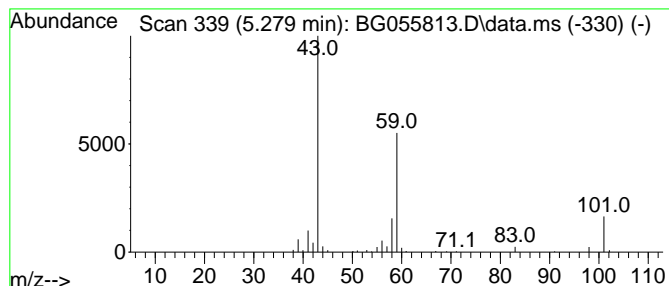
Quant Method : Z:\svoasrv\HPCHEM1\BNA_G\Methods\8270-BG11622.M
 Quant Title : ASP BNA STANDARDS FOR 5 POINT CALIBRATION

TIC Library : C:\Database\NIST20.L
 TIC Integration Parameters: LSCINT.P

 Peak Number 2 2-Pentanone, 4-hydroxy-4-me... Concentration Rank 4

R.T.	EstConc	Area	Relative to ISTD	R.T.
5.279	11.48 ng	195209	1,4-Dichlorobenzene-d4	8.229

Hit#	of 5	Tentative ID	MW	MolForm	CAS#	Qual
1		2-Pentanone, 4-hydroxy-4-methyl-	116	C6H12O2	000123-42-2	59
2		Propane, 2-methyl-2-(1-methyleth...	116	C7H16O	017348-59-3	36
3		3-Hexanol, 4-methyl-	116	C7H16O	000615-29-2	33
4		2-Hexanol, 2-methyl-	116	C7H16O	000625-23-0	33
5		Acetic acid, cyano-, 1,1-dimethy...	141	C7H11NO2	001116-98-9	32



Data Path : Z:\svoasrv\HPCHEM1\BNA_G\Data\BG112822\
 Data File : BG055813.D
 Acq On : 28 Nov 2022 20:31
 Operator : CG/JU
 Sample : N5752-01
 Misc :
 ALS Vial : 10 Sample Multiplier: 1

Instrument :
 BNA_G
 ClientSampleId :
 B-7S

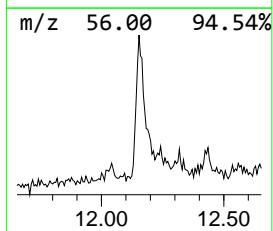
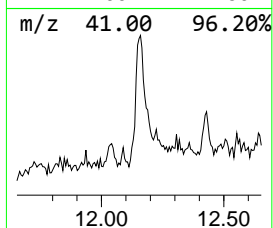
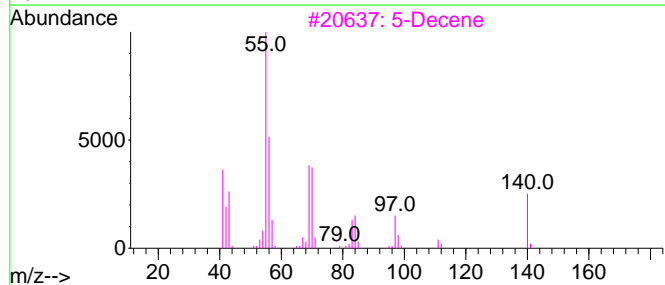
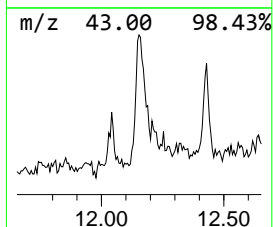
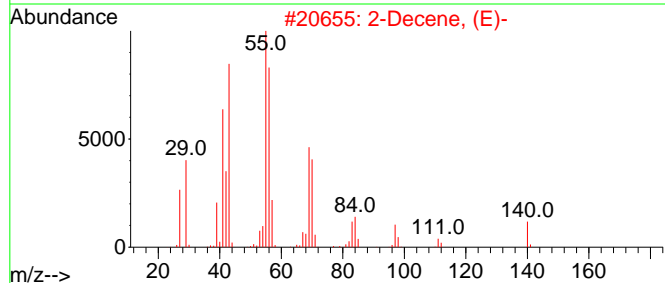
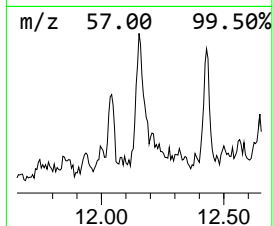
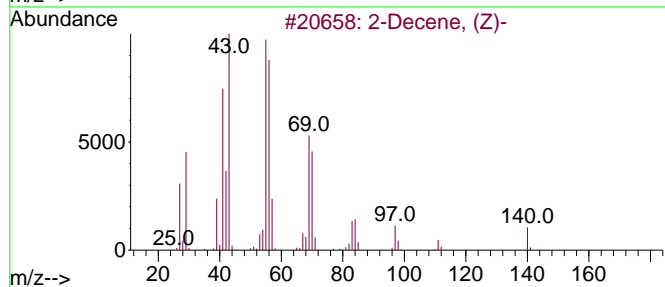
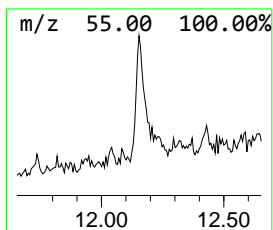
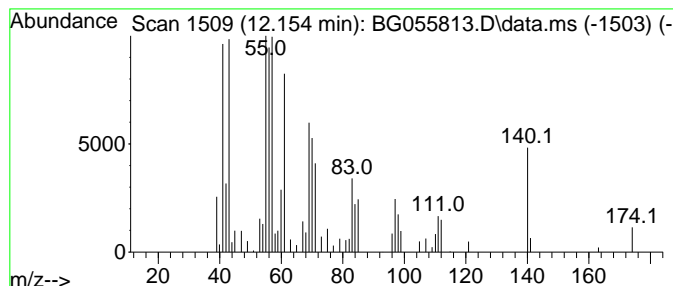
Quant Method : Z:\svoasrv\HPCHEM1\BNA_G\Methods\8270-BG11622.M
 Quant Title : ASP BNA STANDARDS FOR 5 POINT CALIBRATION

TIC Library : C:\Database\NIST20.L
 TIC Integration Parameters: LSCINT.P

 Peak Number 3 2-Decene, (Z)- Concentration Rank 10

R.T.	EstConc	Area	Relative to ISTD	R.T.
12.153	4.38 ng	102006	Naphthalene-d8	11.055

Hit#	of 5	Tentative ID	MW	MolForm	CAS#	Qual
1		2-Decene, (Z)-	140	C10H20	020348-51-0	55
2		2-Decene, (E)-	140	C10H20	020063-97-2	55
3		5-Decene	140	C10H20	019689-19-1	49
4		3-Decene	140	C10H20	019398-37-9	49
5		4-Decene	140	C10H20	019689-18-0	46



Data Path : Z:\svoasrv\HPCHEM1\BNA_G\Data\BG112822\
 Data File : BG055813.D
 Acq On : 28 Nov 2022 20:31
 Operator : CG/JU
 Sample : N5752-01
 Misc :
 ALS Vial : 10 Sample Multiplier: 1

Instrument :
 BNA_G
 ClientSampleId :
 B-7S

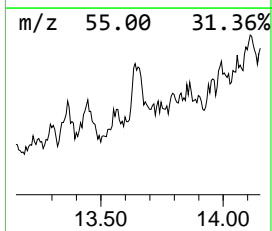
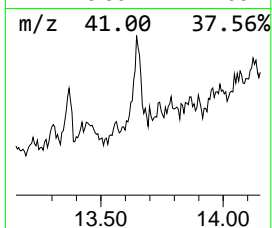
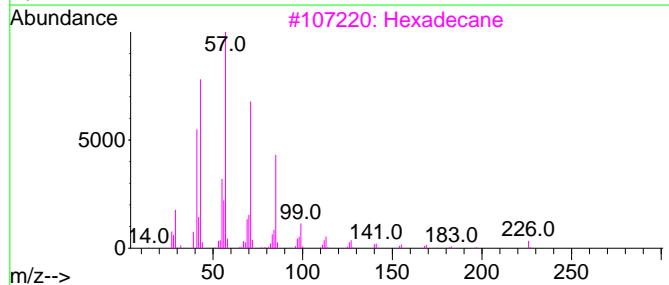
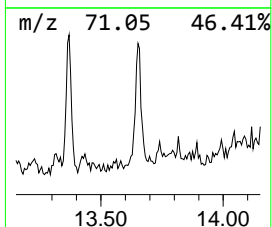
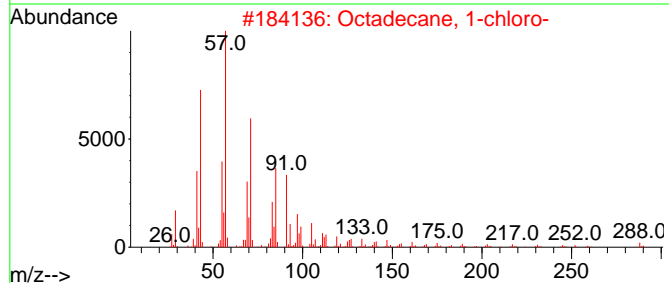
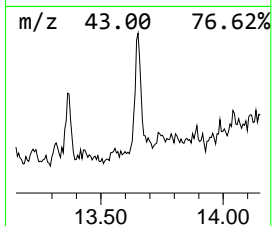
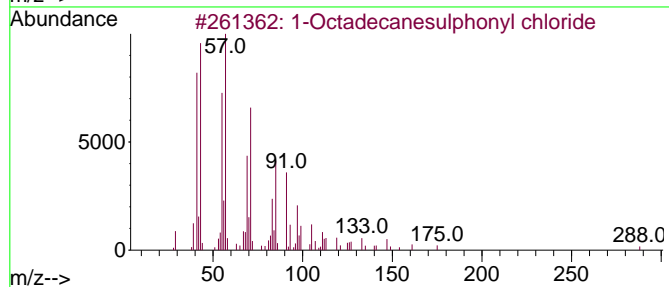
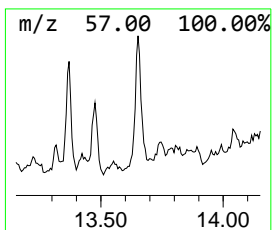
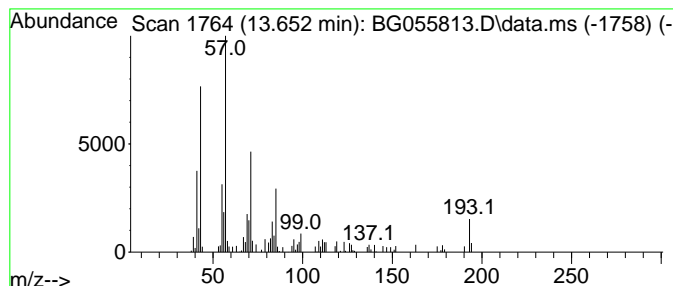
Quant Method : Z:\svoasrv\HPCHEM1\BNA_G\Methods\8270-BG11622.M
 Quant Title : ASP BNA STANDARDS FOR 5 POINT CALIBRATION

TIC Library : C:\Database\NIST20.L
 TIC Integration Parameters: LSCINT.P

 Peak Number 4 1-Octadecanesulphonyl chloride Concentration Rank 11

R.T.	EstConc	Area	Relative to ISTD	R.T.
13.652	2.64 ng	81571	Acenaphthene-d10	14.850

Hit#	of 5	Tentative ID	MW	MolForm	CAS#	Qual
1		1-Octadecanesulphonyl chloride	352	C18H37ClO2S	1000342-70-4	72
2		Octadecane, 1-chloro-	288	C18H37Cl	003386-33-2	72
3		Hexadecane	226	C16H34	000544-76-3	68
4		Pentadecane	212	C15H32	000629-62-9	64
5		Tridecane	184	C13H28	000629-50-5	64



Data Path : Z:\svoasrv\HPCHEM1\BNA_G\Data\BG112822\
 Data File : BG055813.D
 Acq On : 28 Nov 2022 20:31
 Operator : CG/JU
 Sample : N5752-01
 Misc :
 ALS Vial : 10 Sample Multiplier: 1

Instrument :
 BNA_G
 ClientSampleId :
 B-7S

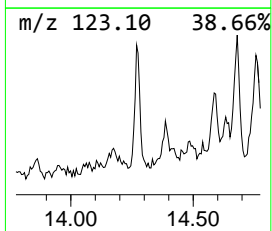
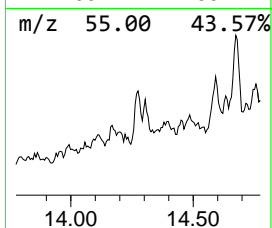
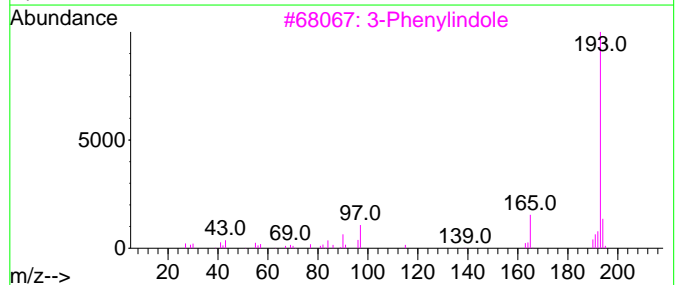
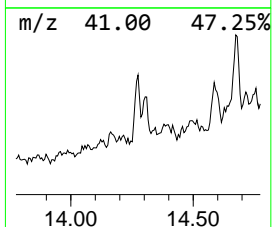
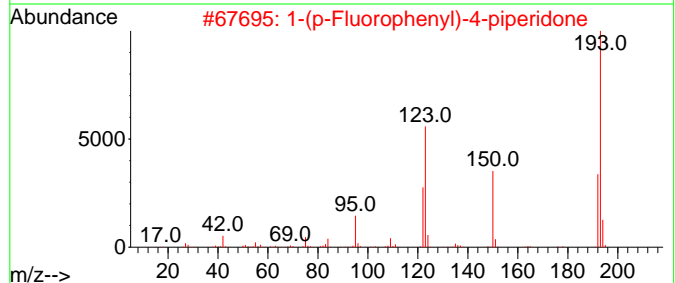
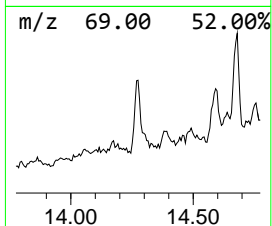
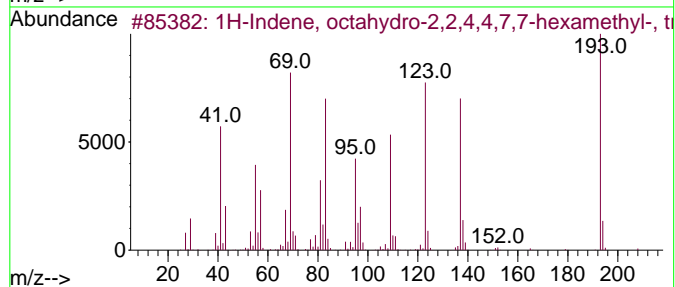
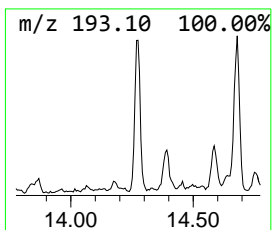
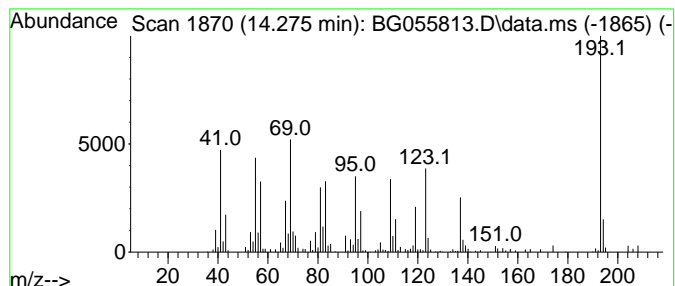
Quant Method : Z:\svoasrv\HPCHEM1\BNA_G\Methods\8270-BG11622.M
 Quant Title : ASP BNA STANDARDS FOR 5 POINT CALIBRATION

TIC Library : C:\Database\NIST20.L
 TIC Integration Parameters: LSCINT.P

 Peak Number 5 1H-Indene, octahydro-2,2,4,... Concentration Rank 8

R.T.	EstConc	Area	Relative to ISTD	R.T.
14.275	5.60 ng	173125	Acenaphthene-d10	14.850

Hit#	of 5	Tentative ID	MW	MolForm	CAS#	Qual
1		1H-Indene, octahydro-2,2,4,4,7,7...	208	C15H28	054832-83-6	59
2		1-(p-Fluorophenyl)-4-piperidone	193	C11H12FNO	1000238-56-7	46
3		3-Phenylindole	193	C14H11N	001504-16-1	27
4		2-Anthracenamine	193	C14H11N	000613-13-8	27
5		Pyrazole, 5-methyl-3-(5-nitro-2-...	193	C8H7N3O3	016239-90-0	25



Data Path : Z:\svoasrv\HPCHEM1\BNA_G\Data\BG112822\
 Data File : BG055813.D
 Acq On : 28 Nov 2022 20:31
 Operator : CG/JU
 Sample : N5752-01
 Misc :
 ALS Vial : 10 Sample Multiplier: 1

Instrument :
 BNA_G
 ClientSampleId :
 B-7S

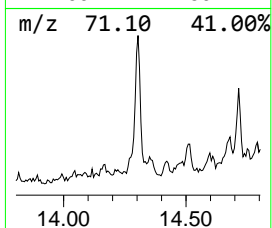
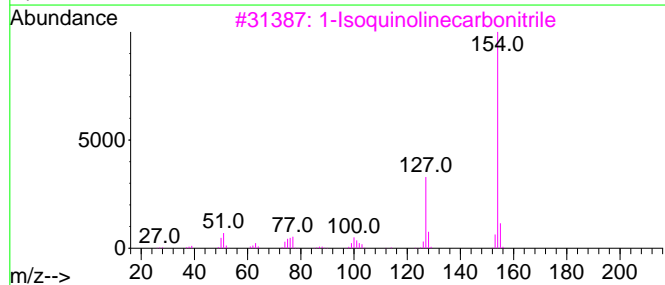
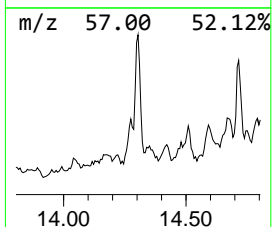
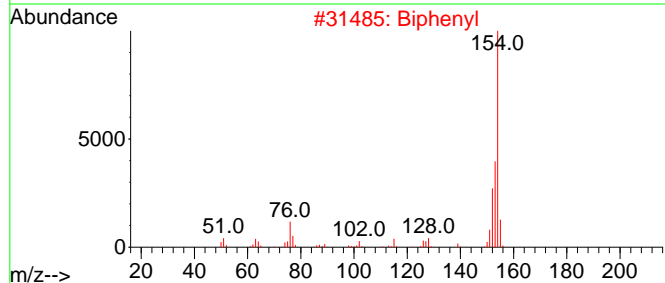
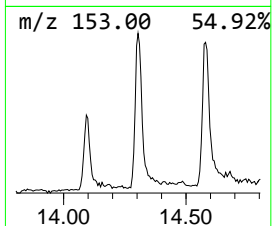
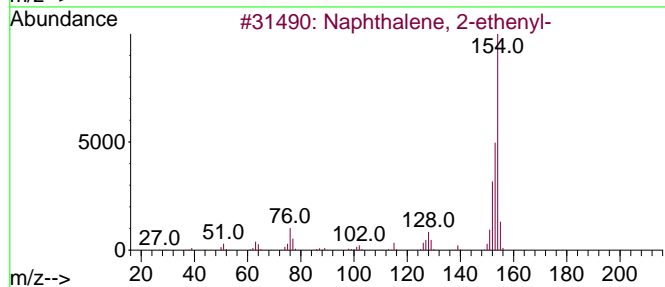
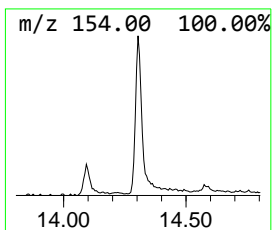
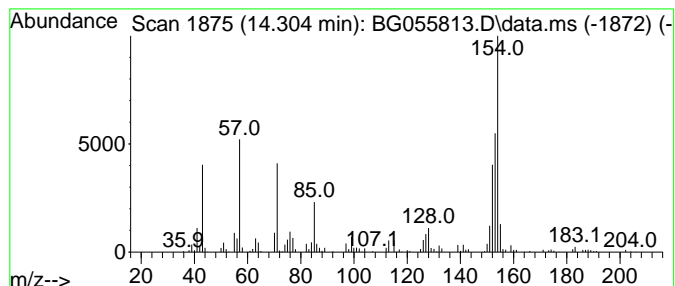
Quant Method : Z:\svoasrv\HPCHEM1\BNA_G\Methods\8270-BG11622.M
 Quant Title : ASP BNA STANDARDS FOR 5 POINT CALIBRATION

TIC Library : C:\Database\NIST20.L
 TIC Integration Parameters: LSCINT.P

 Peak Number 6 Naphthalene, 2-ethenyl- Concentration Rank 7

R.T.	EstConc	Area	Relative to ISTD	R.T.
14.304	5.88 ng	181976	Acenaphthene-d10	14.850

Hit#	of 5	Tentative ID	MW	MolForm	CAS#	Qual
1		Naphthalene, 2-ethenyl-	154	C12H10	000827-54-3	92
2		Biphenyl	154	C12H10	000092-52-4	60
3		1-Isoquinolinecarbonitrile	154	C10H6N2	001198-30-7	30
4		3-Quinolinecarbonitrile	154	C10H6N2	034846-64-5	30
5		6-Cyanoquinoline	154	C10H6N2	023395-72-4	27



Data Path : Z:\svoasrv\HPCHEM1\BNA_G\Data\BG112822\
 Data File : BG055813.D
 Acq On : 28 Nov 2022 20:31
 Operator : CG/JU
 Sample : N5752-01
 Misc :
 ALS Vial : 10 Sample Multiplier: 1

Instrument :
 BNA_G
 ClientSampleId :
 B-7S

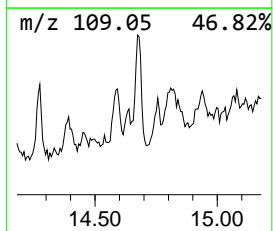
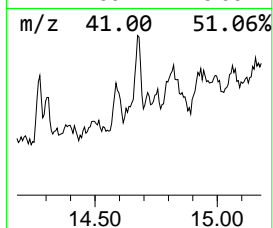
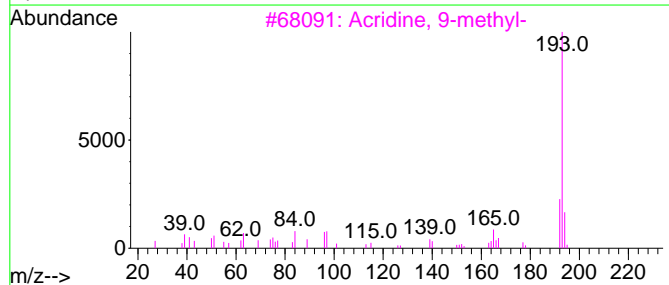
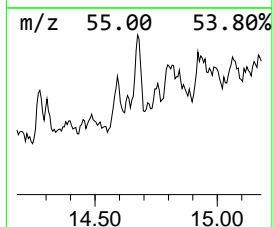
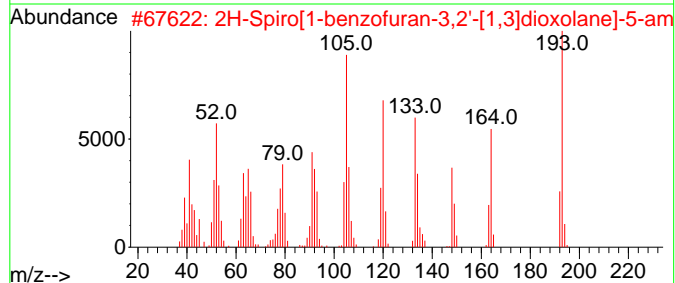
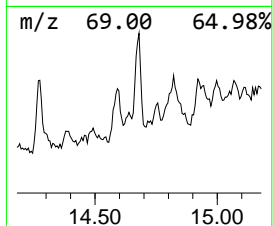
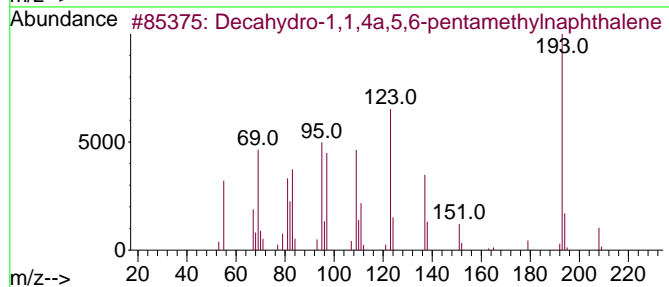
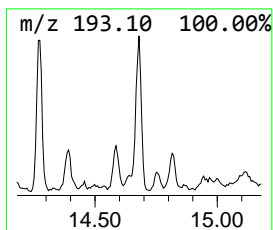
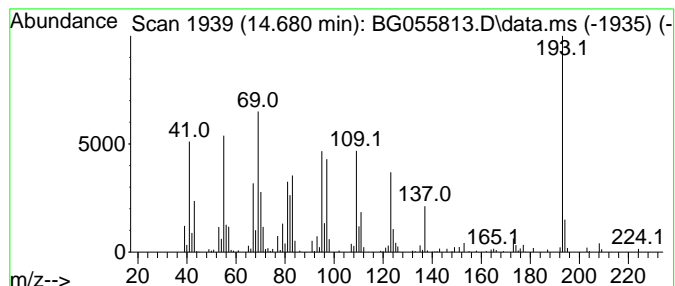
Quant Method : Z:\svoasrv\HPCHEM1\BNA_G\Methods\8270-BG11622.M
 Quant Title : ASP BNA STANDARDS FOR 5 POINT CALIBRATION

TIC Library : C:\Database\NIST20.L
 TIC Integration Parameters: LSCINT.P

 Peak Number 7 Decahydro-1,1,4a,5,6-pentam... Concentration Rank 6

R.T.	EstConc	Area	Relative to ISTD	R.T.
14.680	6.24 ng	193101	Acenaphthene-d10	14.850

Hit#	of 5	Tentative ID	MW	MolForm	CAS#	Qual
1		Decahydro-1,1,4a,5,6-pentamethyl...	208	C15H28	080655-44-3	86
2		2H-Spiro[1-benzofuran-3,2'-[1,3]...	193	C10H11N03	1000387-33-4	35
3		Acridine, 9-methyl-	193	C14H11N	000611-64-3	22
4		2-((Trimethylsilyl)thio)nicotino...	208	C9H12N2SSi	1000474-02-5	22
5		2-Anthracenamine	193	C14H11N	000613-13-8	22



Data Path : Z:\svoasrv\HPCHEM1\BNA_G\Data\BG112822\
 Data File : BG055813.D
 Acq On : 28 Nov 2022 20:31
 Operator : CG/JU
 Sample : N5752-01
 Misc :
 ALS Vial : 10 Sample Multiplier: 1

Instrument :
 BNA_G
 ClientSampleId :
 B-7S

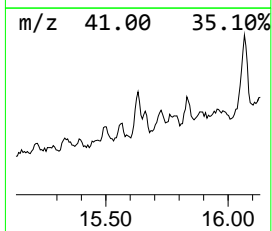
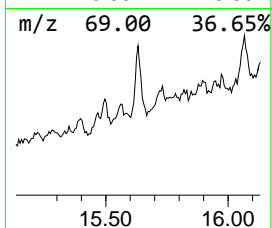
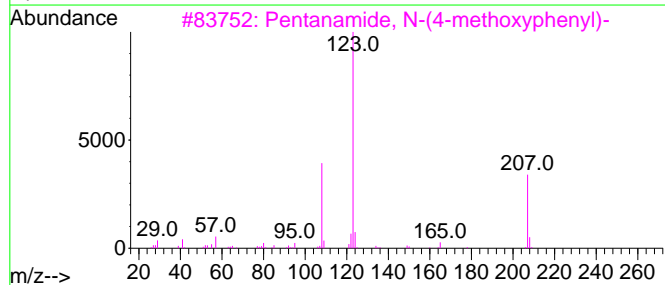
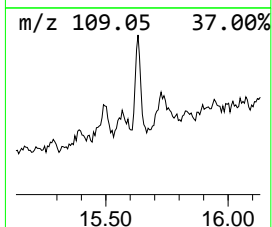
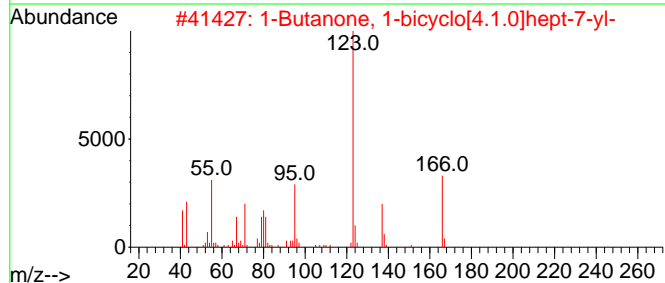
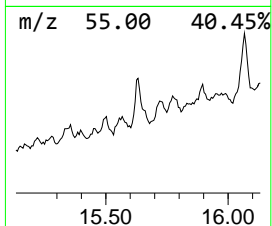
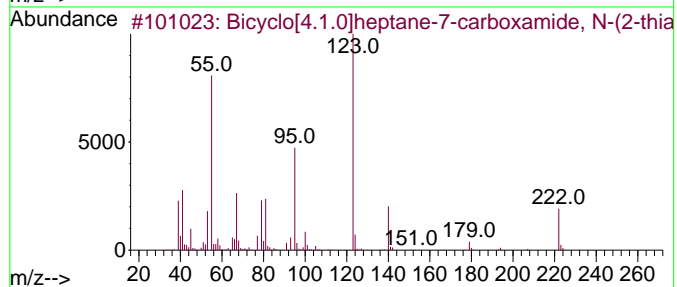
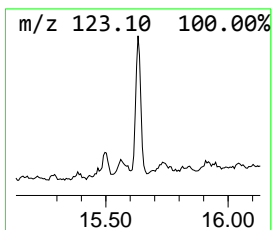
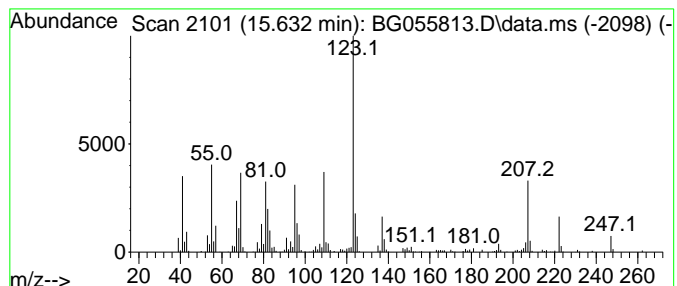
Quant Method : Z:\svoasrv\HPCHEM1\BNA_G\Methods\8270-BG11622.M
 Quant Title : ASP BNA STANDARDS FOR 5 POINT CALIBRATION

TIC Library : C:\Database\NIST20.L
 TIC Integration Parameters: LSCINT.P

 Peak Number 8 Bicyclo[4.1.0]heptane-7-car... Concentration Rank 5

R.T.	EstConc	Area	Relative to ISTD	R.T.
15.632	6.56 ng	202954	Acenaphthene-d10	14.850

Hit#	of	5	Tentative ID	MW	MolForm	CAS#	Qual
1			Bicyclo[4.1.0]heptane-7-carboxam...	222	C11H14N2O5	329912-72-3	53
2			1-Butanone, 1-bicyclo[4.1.0]hept...	166	C11H18O	054764-62-4	50
3			Pentanamide, N-(4-methoxyphenyl)-	207	C12H17NO2	1000306-89-3	49
4			Benzamide, 3-fluoro-N-methyl-N-p...	223	C13H18FNO	1000421-36-9	47
5			Benzamide, 4-fluoro-N-(hept-2-yl)-	237	C14H20FNO	1000407-31-9	47



Data Path : Z:\svoasrv\HPCHEM1\BNA_G\Data\BG112822\
 Data File : BG055813.D
 Acq On : 28 Nov 2022 20:31
 Operator : CG/JU
 Sample : N5752-01
 Misc :
 ALS Vial : 10 Sample Multiplier: 1

Instrument :
 BNA_G
 ClientSampleId :
 B-7S

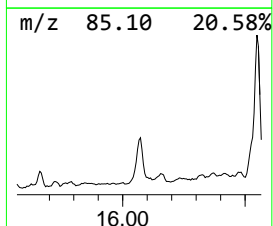
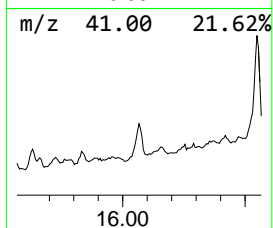
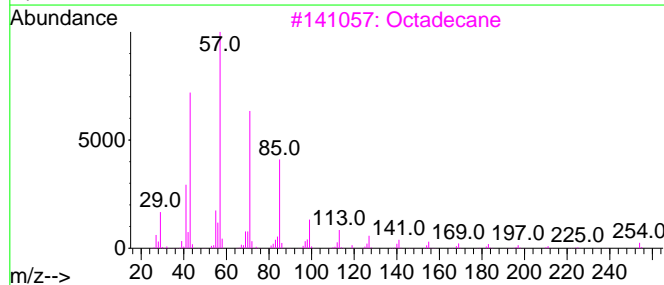
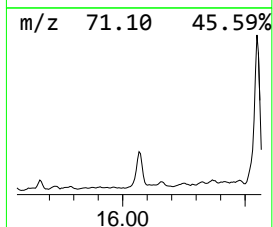
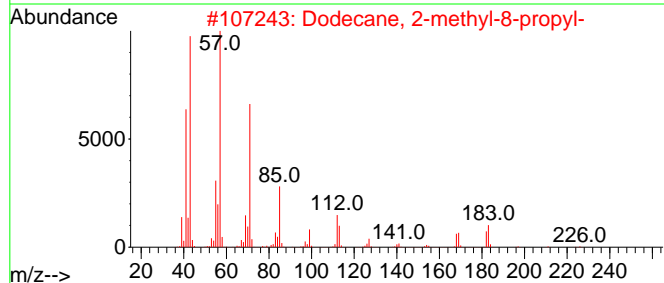
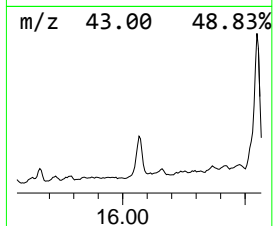
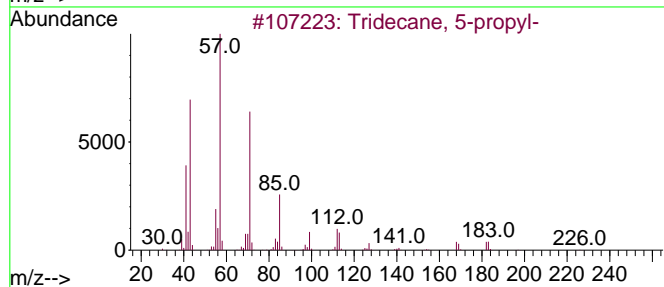
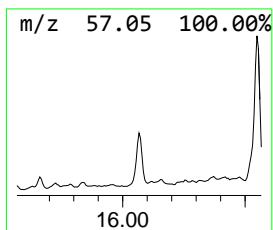
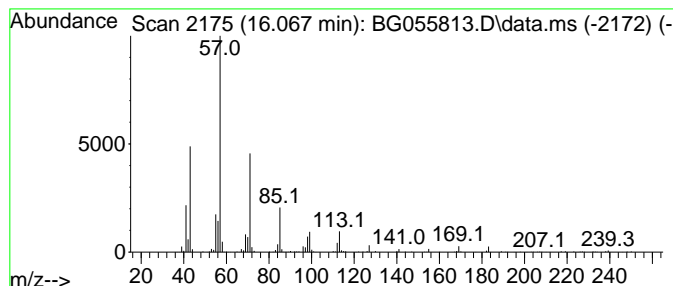
Quant Method : Z:\svoasrv\HPCHEM1\BNA_G\Methods\8270-BG11622.M
 Quant Title : ASP BNA STANDARDS FOR 5 POINT CALIBRATION

TIC Library : C:\Database\NIST20.L
 TIC Integration Parameters: LSCINT.P

 Peak Number 9 Tridecane, 5-propyl- Concentration Rank 3

R.T.	EstConc	Area	Relative to ISTD	R.T.
16.067	13.46 ng	416491	Acenaphthene-d10	14.850

Hit#	of 5	Tentative ID	MW	MolForm	CAS#	Qual
1		Tridecane, 5-propyl-	226	C16H34	055045-11-9	87
2		Dodecane, 2-methyl-8-propyl-	226	C16H34	055045-07-3	72
3		Octadecane	254	C18H38	000593-45-3	64
4		Nonadecane	268	C19H40	000629-92-5	64
5		Heptadecane	240	C17H36	000629-78-7	59



Data Path : Z:\svoasrv\HPCHEM1\BNA_G\Data\BG112822\
 Data File : BG055813.D
 Acq On : 28 Nov 2022 20:31
 Operator : CG/JU
 Sample : N5752-01
 Misc :
 ALS Vial : 10 Sample Multiplier: 1

Instrument :
 BNA_G
 ClientSampleId :
 B-7S

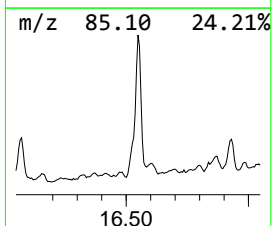
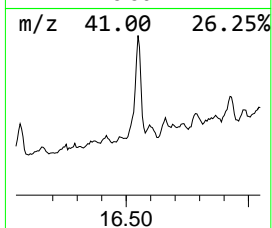
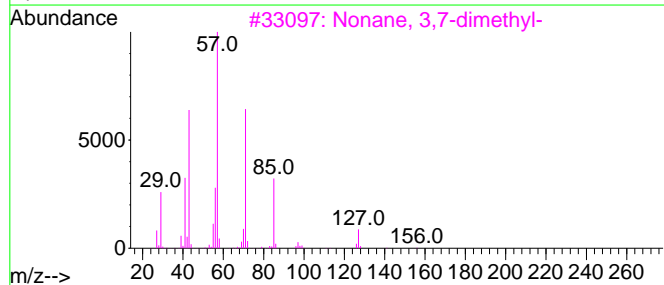
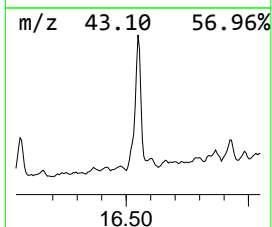
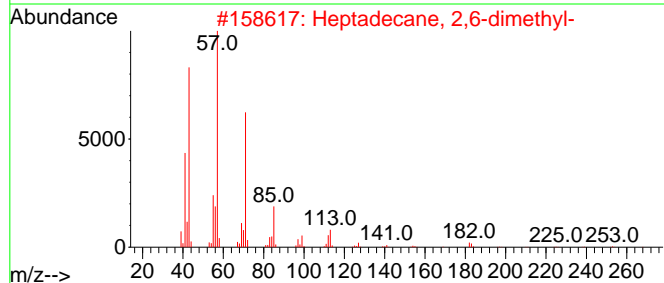
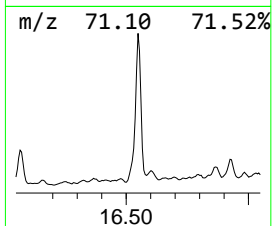
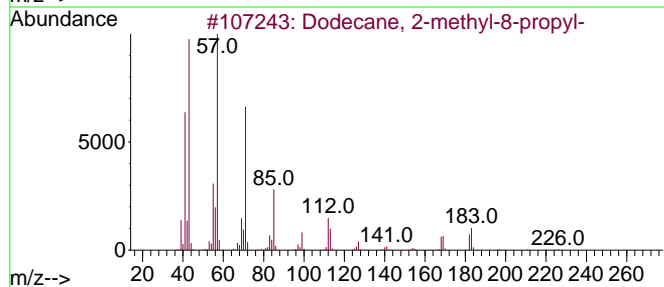
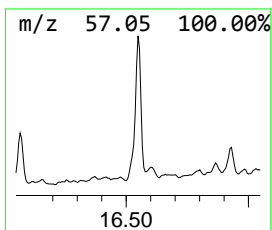
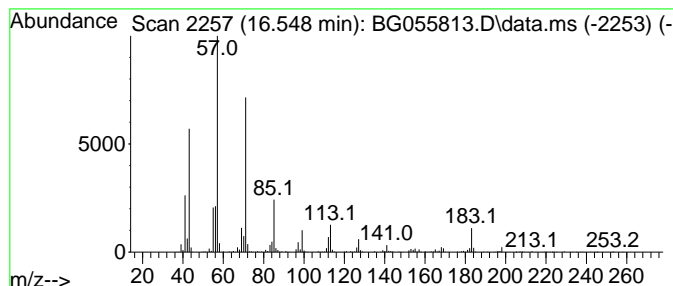
Quant Method : Z:\svoasrv\HPCHEM1\BNA_G\Methods\8270-BG11622.M
 Quant Title : ASP BNA STANDARDS FOR 5 POINT CALIBRATION

TIC Library : C:\Database\NIST20.L
 TIC Integration Parameters: LSCINT.P

 Peak Number 10 Dodecane, 2-methyl-8-propyl- Concentration Rank 2

R.T.	EstConc	Area	Relative to ISTD	R.T.
16.548	17.53 ng	1514240	Phenanthrene-d10	17.600

Hit#	of 5	Tentative ID	MW	MolForm	CAS#	Qual
1		Dodecane, 2-methyl-8-propyl-	226	C16H34	055045-07-3	90
2		Heptadecane, 2,6-dimethyl-	268	C19H40	054105-67-8	86
3		Nonane, 3,7-dimethyl-	156	C11H24	017302-32-8	76
4		Tetradecane, 3-methyl-	212	C15H32	018435-22-8	72
5		Dodecane, 2,7,10-trimethyl-	212	C15H32	074645-98-0	72



Data Path : Z:\svoasrv\HPCHEM1\BNA_G\Data\BG112822\
 Data File : BG055813.D
 Acq On : 28 Nov 2022 20:31
 Operator : CG/JU
 Sample : N5752-01
 Misc :
 ALS Vial : 10 Sample Multiplier: 1

Instrument :
 BNA_G
 ClientSampleId :
 B-7S

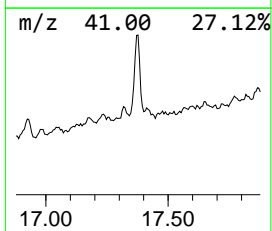
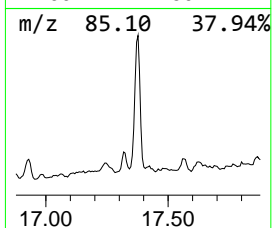
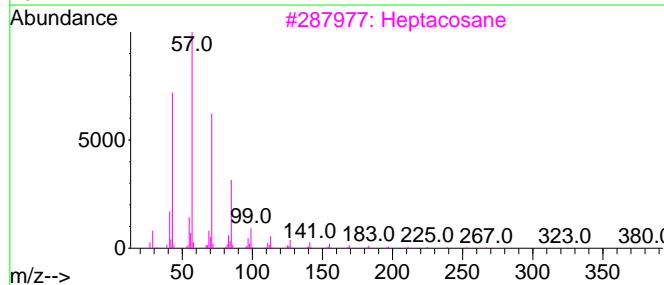
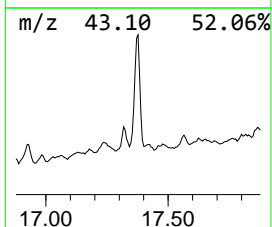
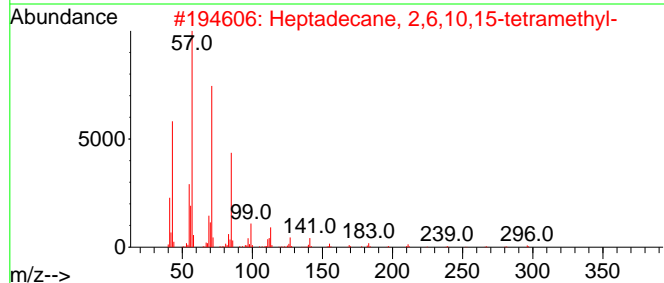
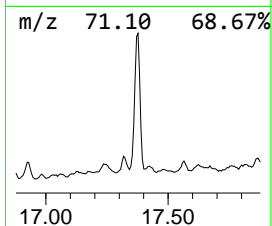
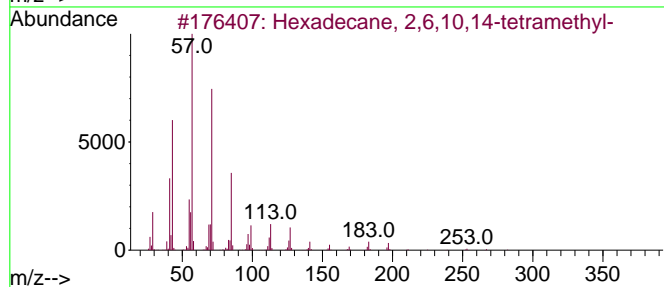
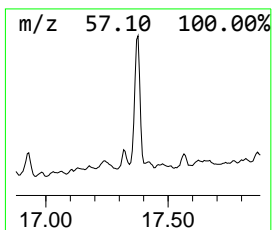
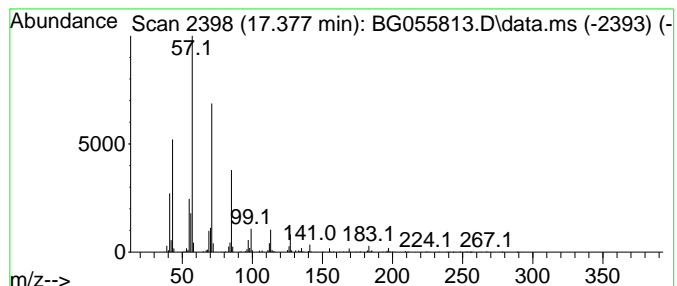
Quant Method : Z:\svoasrv\HPCHEM1\BNA_G\Methods\8270-BG11622.M
 Quant Title : ASP BNA STANDARDS FOR 5 POINT CALIBRATION

TIC Library : C:\Database\NIST20.L
 TIC Integration Parameters: LSCINT.P

 Peak Number 11 Hexadecane, 2,6,10,14-tetra... Concentration Rank 1

R.T.	EstConc	Area	Relative to ISTD	R.T.
17.377	20.00 ng	1727840	Phenanthrene-d10	17.600

Hit#	of 5	Tentative ID	MW	MolForm	CAS#	Qual
1		Hexadecane, 2,6,10,14-tetramethyl-	282	C20H42	000638-36-8	97
2		Heptadecane, 2,6,10,15-tetramethyl-	296	C21H44	054833-48-6	91
3		Heptacosane	380	C27H56	000593-49-7	90
4		Octadecane, 1-iodo-	380	C18H37I	000629-93-6	87
5		Tetradecane, 4-ethyl-	226	C16H34	055045-14-2	86



Data Path : Z:\svoasrv\HPCHEM1\BNA_G\Data\BG112822\
 Data File : BG055813.D
 Acq On : 28 Nov 2022 20:31
 Operator : CG/JU
 Sample : N5752-01
 Misc :
 ALS Vial : 10 Sample Multiplier: 1

Instrument :
 BNA_G
 ClientSampleId :
 B-7S

Quant Method : Z:\svoasrv\HPCHEM1\BNA_G\Methods\8270-BG111622.M
 Quant Title : ASP BNA STANDARDS FOR 5 POINT CALIBRATION

TIC Library : C:\Database\NIST20.L
 TIC Integration Parameters: LSCINT.P

TIC Top Hit name	RT	EstConc	Units	Response	--Internal Standard--			
					#	RT	Resp	Conc
Trichloroethylene	3.528	5.0	ng	84591	1	8.229	339974	20.0
2-Pentanone, 4-...	5.279	11.5	ng	195209	1	8.229	339974	20.0
2-Decene, (Z)-	12.153	4.4	ng	102006	2	11.055	466018	20.0
1-Octadecanesul...	13.652	2.6	ng	81571	3	14.850	618632	20.0
1H-Indene, octa...	14.275	5.6	ng	173125	3	14.850	618632	20.0
Naphthalene, 2-...	14.304	5.9	ng	181976	3	14.850	618632	20.0
Decahydro-1,1,4...	14.680	6.2	ng	193101	3	14.850	618632	20.0
Bicyclo[4.1.0]h...	15.632	6.6	ng	202954	3	14.850	618632	20.0
Tridecane, 5-pr...	16.067	13.5	ng	416491	3	14.850	618632	20.0
Dodecane, 2-met...	16.548	17.5	ng	1514240	4	17.600	1727840	20.0
Hexadecane, 2,6...	17.377	20.0	ng	1727840	4	17.600	1727840	20.0