

Data Path : Z:\svoasrv\HPCHEM1\BNA\_G\Data\BG112822\  
 Data File : BG055817.D  
 Acq On : 28 Nov 2022 23:17  
 Operator : CG/JU  
 Sample : N5752-20 5X  
 Misc :  
 ALS Vial : 14 Sample Multiplier: 1

Instrument :  
 BNA\_G  
 ClientSampleId :  
 B-16D

Integration Parameters: rteint.p  
 Integrator: RTE  
 Smoothing : ON Filtering: 5  
 Sampling : 1 Min Area: 3 % of largest Peak  
 Start Thrs: 0.2 Max Peaks: 100  
 Stop Thrs : 0 Peak Location: TOP

If leading or trailing edge < 100 prefer < Baseline drop else tangent >  
 Peak separation: 5

Method : Z:\svoasrv\HPCHEM1\BNA\_G\Methods\8270-BG111622.M  
 Title : ASP BNA STANDARDS FOR 5 POINT CALIBRATION

Signal : TIC: BG055817.D\data.ms

peak #	R.T. min	first scan	max scan	last scan	PK TY	peak height	corr. area	corr. % max.	% of total
1	5.279	333	339	345	rBV	18861	31618	4.57%	0.723%
2	5.767	415	422	436	rBV	92728	172597	24.96%	3.945%
3	7.383	690	697	709	rBV	99907	191036	27.62%	4.366%
4	7.512	714	719	729	rVB	11625	21713	3.14%	0.496%
5	8.229	834	841	849	rBV	186809	324715	46.95%	7.421%
6	9.404	1034	1041	1049	rVB	58781	103469	14.96%	2.365%
7	11.061	1316	1323	1331	rBV	261880	467373	67.58%	10.682%
8	13.475	1728	1734	1744	rVB	199223	306054	44.25%	6.995%
9	13.646	1757	1763	1769	rBV7	5068	12274	1.77%	0.281%
10	14.274	1866	1870	1874	rBV2	13612	22347	3.23%	0.511%
11	14.592	1918	1924	1928	rBV5	11679	21560	3.12%	0.493%
12	14.680	1935	1939	1943	rVB2	17953	24736	3.58%	0.565%
13	14.856	1957	1969	1975	rBV	401961	648440	93.76%	14.820%
14	15.632	2098	2101	2109	rVB4	19448	29673	4.29%	0.678%
15	16.337	2216	2221	2229	rBV	133467	228595	33.05%	5.224%
16	16.548	2253	2257	2262	rVB3	38589	61028	8.82%	1.395%
17	17.594	2430	2435	2441	rBV	450212	691596	100.00%	15.806%
18	20.179	2872	2875	2880	rVB	298642	343091	49.61%	7.841%
19	21.889	3162	3166	3173	rVB2	425513	673531	97.39%	15.393%

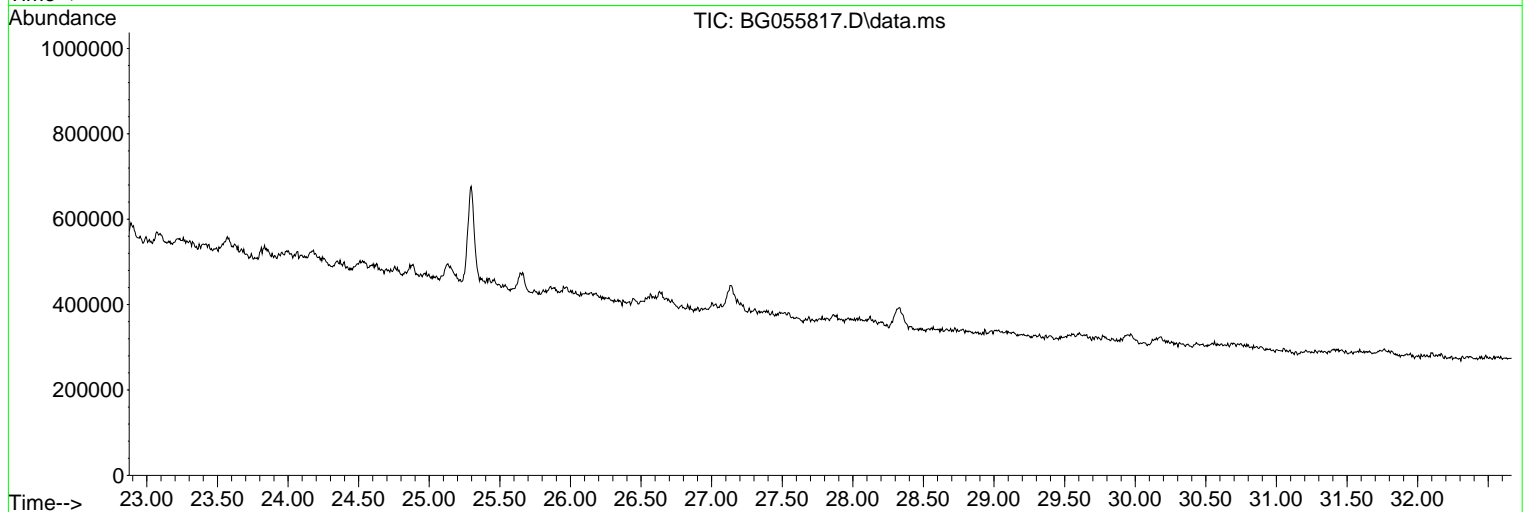
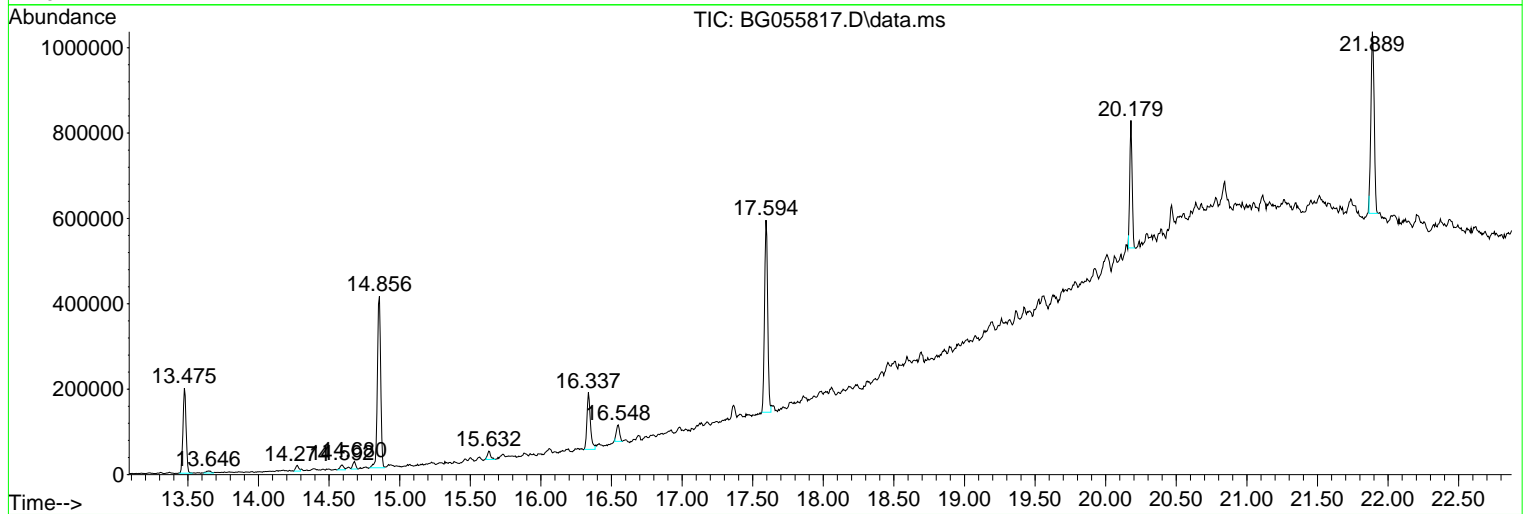
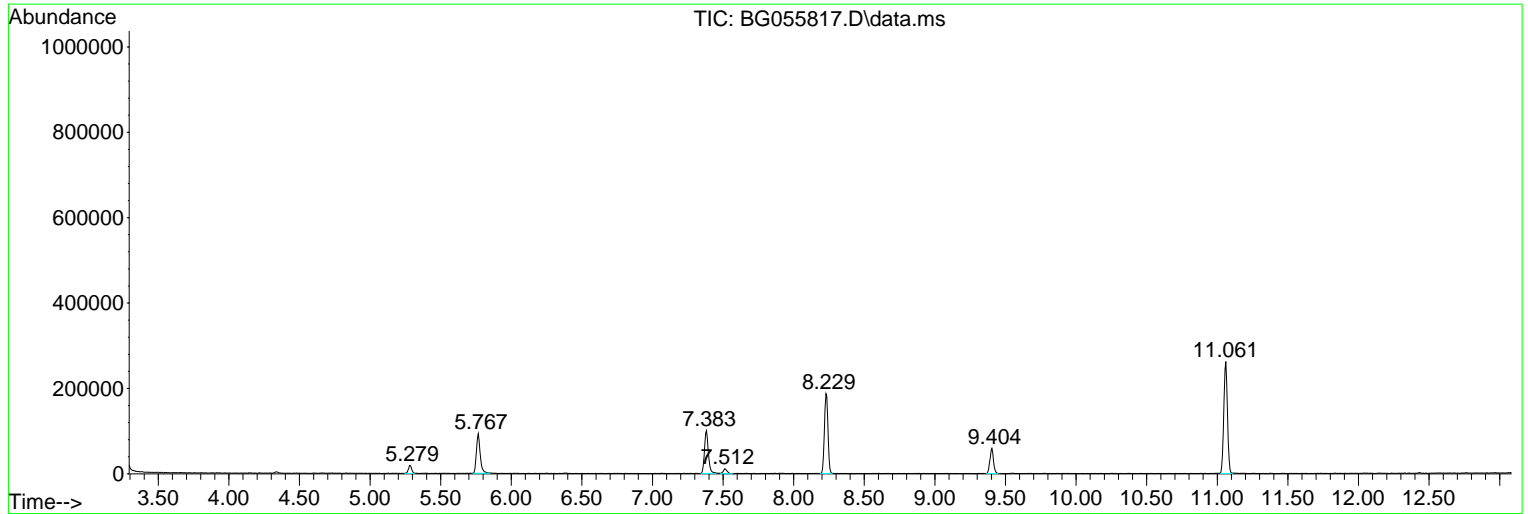
Sum of corrected areas: 4375446

Data Path : Z:\svoasrv\HPCHEM1\BNA\_G\Data\BG112822\  
 Data File : BG055817.D  
 Acq On : 28 Nov 2022 23:17  
 Operator : CG/JU  
 Sample : N5752-20 5X  
 Misc :  
 ALS Vial : 14 Sample Multiplier: 1

**Instrument :**  
 BNA\_G  
**ClientSampleId :**  
 B-16D

Quant Method : Z:\svoasrv\HPCHEM1\BNA\_G\Methods\8270-BG11622.M  
 Quant Title : ASP BNA STANDARDS FOR 5 POINT CALIBRATION

TIC Library : C:\Database\NIST20.L  
 TIC Integration Parameters: LSCINT.P



Data Path : Z:\svoasrv\HPCHEM1\BNA\_G\Data\BG112822\  
Data File : BG055817.D  
Acq On : 28 Nov 2022 23:17  
Operator : CG/JU  
Sample : N5752-20 5X  
Misc :  
ALS Vial : 14 Sample Multiplier: 1

Instrument :  
BNA\_G  
ClientSampleId :  
B-16D

Quant Method : Z:\svoasrv\HPCHEM1\BNA\_G\Methods\8270-BG111622.M  
Quant Title : ASP BNA STANDARDS FOR 5 POINT CALIBRATION

TIC Library : C:\Database\NIST20.L  
TIC Integration Parameters: LSCINT.P

No Library Search Compounds Detected

\*\*\*\*\*

Data Path : Z:\svoasrv\HPCHEM1\BNA\_G\Data\BG112822\  
Data File : BG055817.D  
Acq On : 28 Nov 2022 23:17  
Operator : CG/JU  
Sample : N5752-20 5X  
Misc :  
ALS Vial : 14 Sample Multiplier: 1

Instrument :  
BNA\_G  
ClientSampleId :  
B-16D

Quant Method : Z:\svoasrv\HPCHEM1\BNA\_G\Methods\8270-BG111622.M  
Quant Title : ASP BNA STANDARDS FOR 5 POINT CALIBRATION

TIC Library : C:\Database\NIST20.L  
TIC Integration Parameters: LSCINT.P

TIC Top Hit name	RT	EstConc	Units	Response	#	RT	Resp	Conc
------------------	----	---------	-------	----------	---	----	------	------

-----

|--Internal Standard--|