

Quantitation Report (QT Reviewed)

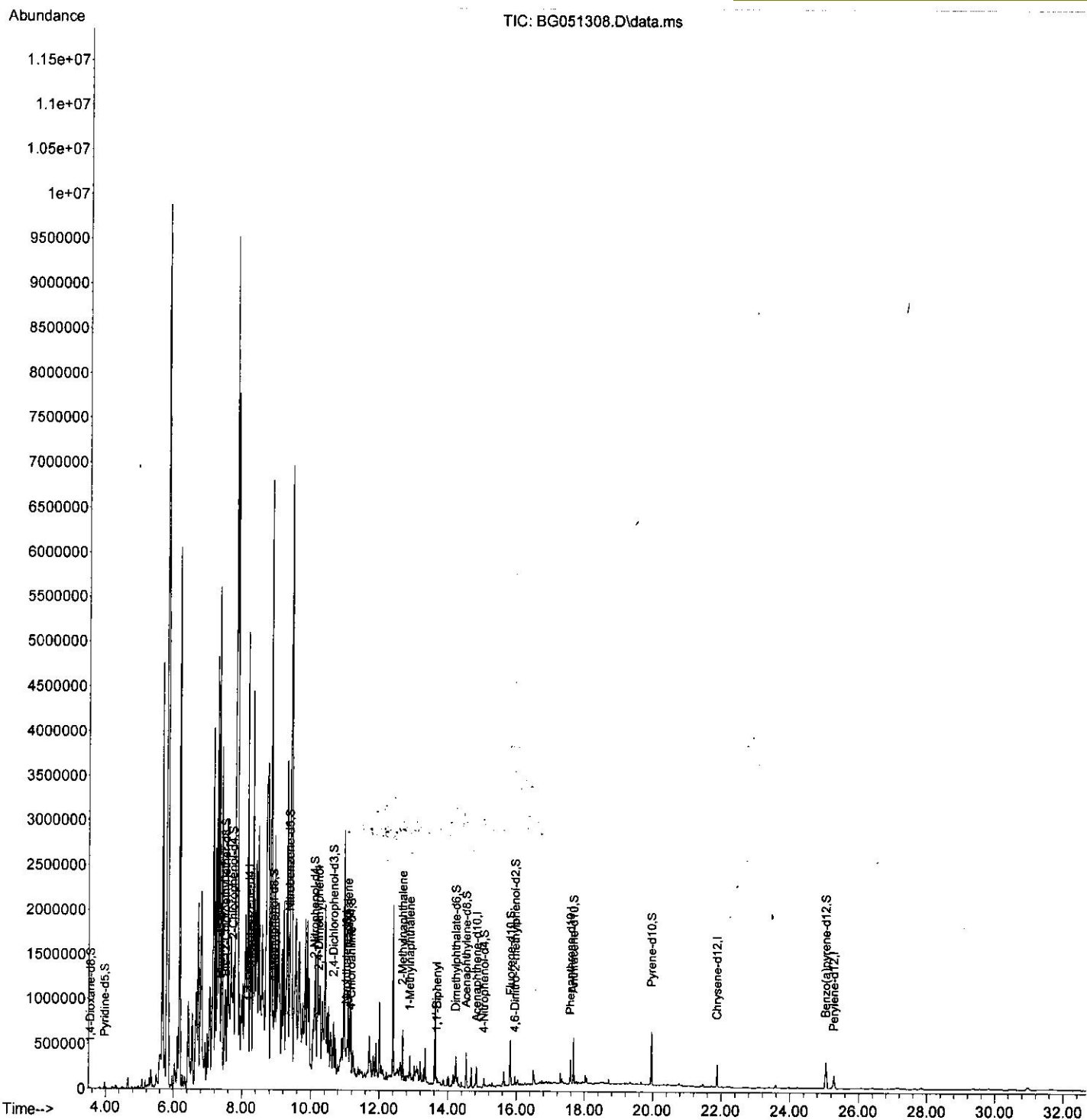
Data Path : Z:\svoasrv\HPCHEM1\BNA_G\Data\BG120221\
 Data File : BG051308.D
 Acq On : 2 Dec 2021 17:41
 Operator : CG/JU
 Sample : M4868-08
 Misc :
 ALS Vial : 13 Sample Multiplier: 1

Instrument :
 BNA_G
 Client Sampled :
 BGKP3

Quant Time: Dec 03 00:01:08 2021
 Quant Method : Z:\svoasrv\HPCHEM1\BNA_G\Methods\SFAM-EPA-BG112321.M
 Quant Title : SVOA CALIBRATION
 QLast Update : Wed Nov 24 06:04:50 2021
 Response via : Initial Calibration

Manual Integrations APPROVED

Reviewed By : Jagrut Upadhyay 12/03/2021
 Supervised By : mohammad ahmed 12/05/2021



Quantitation Report (Qedit)

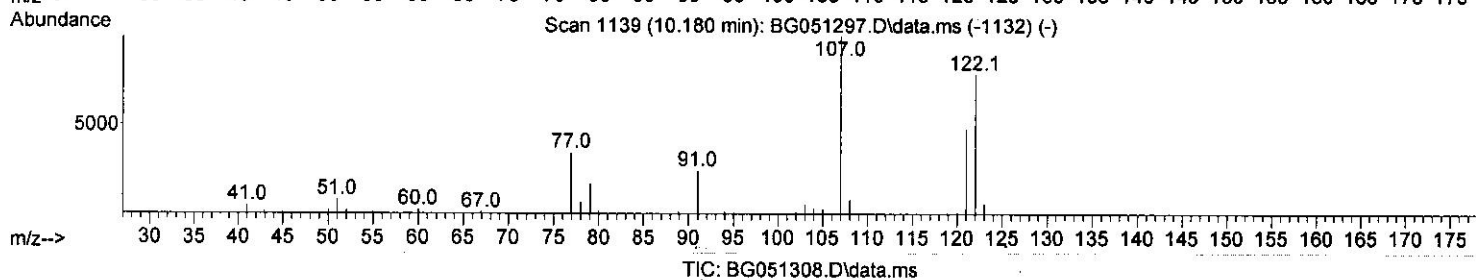
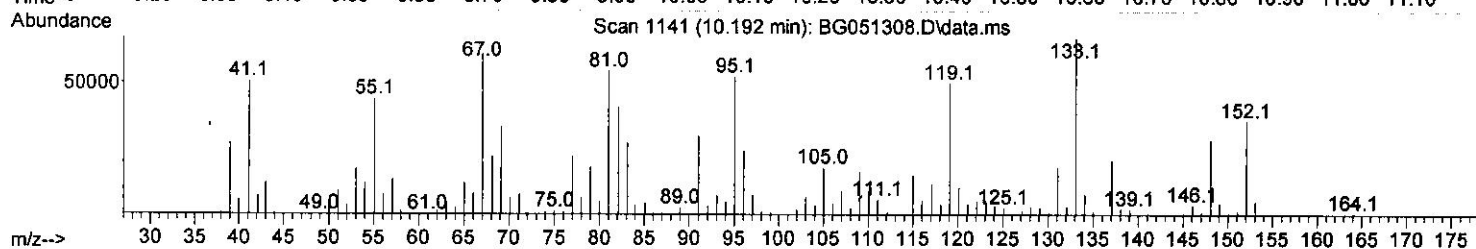
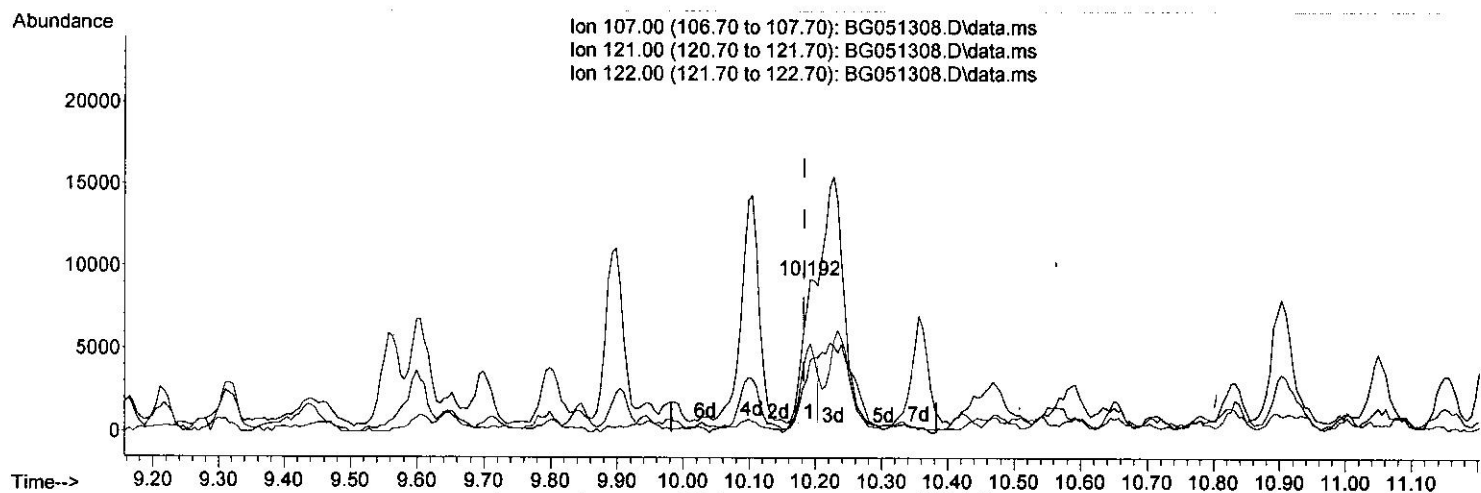
Data Path : Z:\svoasrv\HPCHEM1\BNA_G\Data\BG120221\
 Data File : BG051308.D
 Acq On : 2 Dec 2021 17:41
 Operator : CG/JU
 Sample : M4868-08
 Misc :
 ALS Vial : 13 Sample Multiplier: 1

Instrument :
 BNA_G
 Client Sampled :
 BGKP3

Quant Time: Dec 03 00:01:08 2021
 Quant Method : Z:\svoasrv\HPCHEM1\BNA_G\Methods\SFAM-EPA-BG112321.M
 Quant Title : SVOA CALIBRATION
 QLast Update : Wed Nov 24 06:04:50 2021
 Response via : Initial Calibration

Manual IntegrationsAPPROVED

Reviewed By :Jagrut Upadhyay 12/03/2021
 Supervised By :mohammad ahmed 12/05/2021



(26) 2,4-Dimethylphenol

10.192min (+ 0.009) 5.95 ng/ul

response 14254

Ion	Exp%	Act%
107.00	100.00	100.00
121.00	49.10	47.16
122.00	79.60	58.14#
0.00	0.00	0.00

Quantitation Report (Qedit)

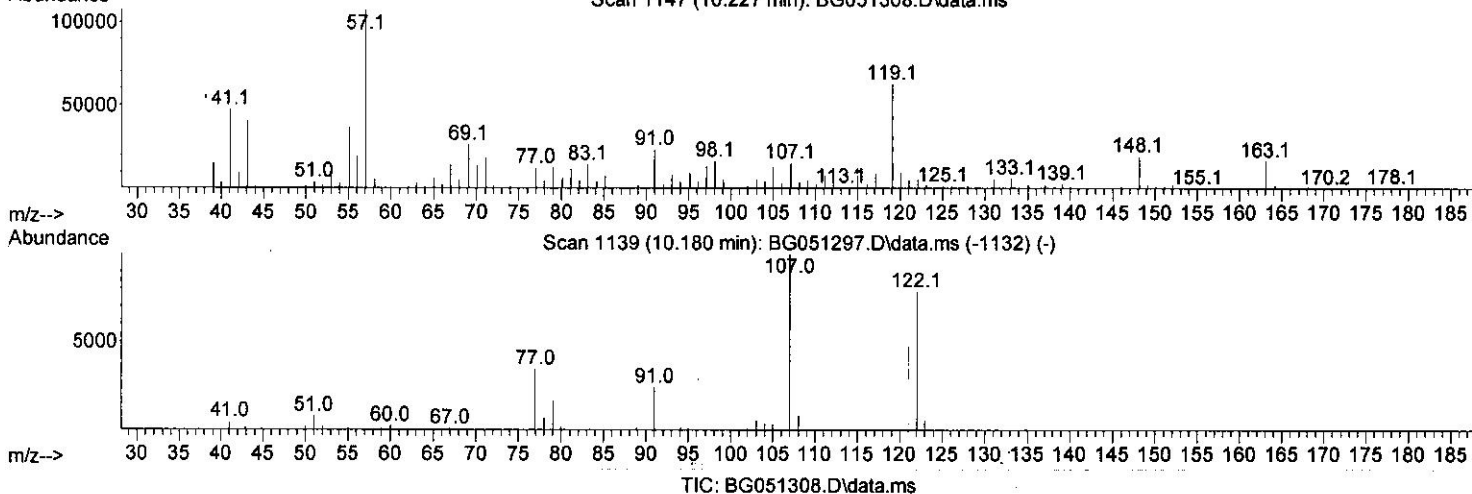
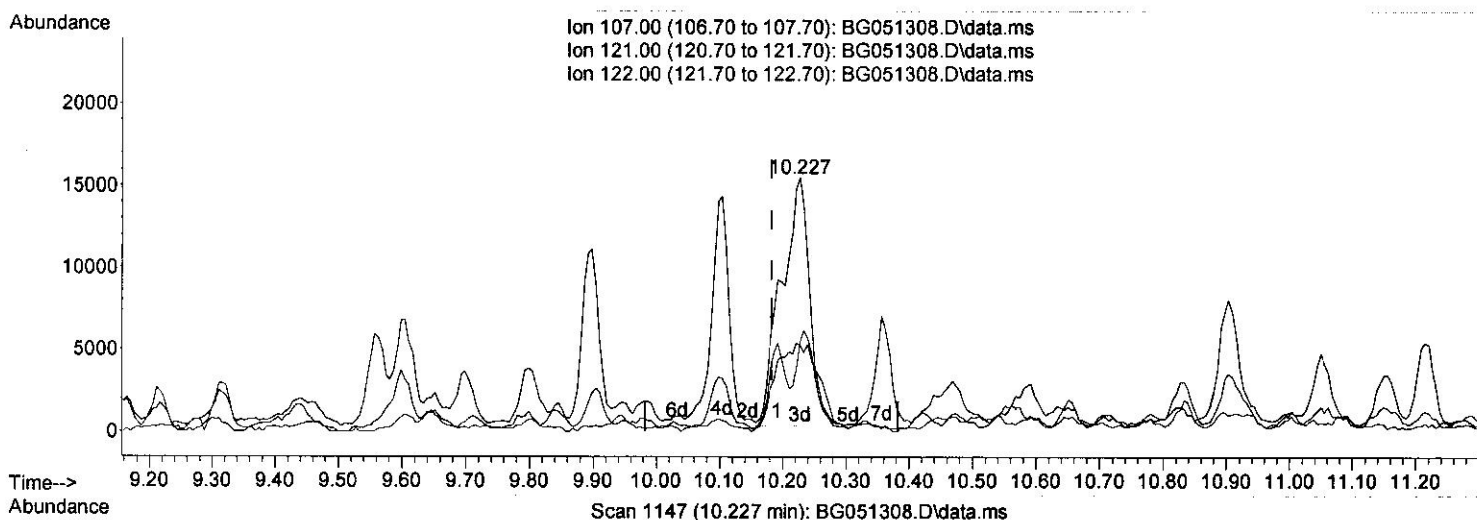
Data Path : Z:\svoasrv\HPCHEM1\BNA_G\Data\BG120221\
 Data File : BG051308.D
 Acq On : 2 Dec 2021 17:41
 Operator : CG/JU
 Sample : M4868-08
 Misc :
 ALS Vial : 13 Sample Multiplier: 1

Instrument :
 BNA_G
 Client Sampled :
 BGKP3

Quant Time: Dec 03 00:01:08 2021
 Quant Method : Z:\svoasrv\HPCHEM1\BNA_G\Methods\SFAM-EPA-BG112321.M
 Quant Title : SVOA CALIBRATION
 QLast Update : Wed Nov 24 06:04:50 2021
 Response via : Initial Calibration

Manual Integrations APPROVED

Reviewed By : Jagrut Upadhyay 12/03/2021
 Supervised By : mohammad ahmed 12/05/2021



(26) 2,4-Dimethylphenol

10.227min (+ 0.044) 19.73 ng/ul m

response 47295

Ion	Exp%	Act%
107.00	100.00	100.00
121.00	49.10	33.75#
122.00	79.60	35.41#
0.00	0.00	0.00

Quantitation Report (QT Reviewed)

Data Path : Z:\svoasrv\HPCHEM1\BNA_G\Data\BG120221\
 Data File : BG051308.D
 Acq On : 2 Dec 2021 17:41
 Operator : CG/JU
 Sample : M4868-08
 Misc :
 ALS Vial : 13 Sample Multiplier: 1

Instrument :

BNA_G

Client Sampled :

BGKP3

Quant Time: Dec 03 00:01:08 2021
 Quant Method : Z:\svoasrv\HPCHEM1\BNA_G\Methods\SFAM-EPA-BG112321.M
 Quant Title : SVOA CALIBRATION
 QLast Update : Wed Nov 24 06:04:50 2021
 Response via : Initial Calibration

Manual Integrations APPROVED

Reviewed By : Jagrut Upadhyay 12/03/2021
 Supervised By : mohammad ahmed 12/05/2021

Compound	R.T.	QIon	Response	Conc	Units	Dev(Min)
Internal Standards						
1) 1,4-Dichlorobenzene-d4	8.212	152	27936	20.000	ng/ul	0.00
20) Naphthalene-d8	11.032	136	118853	20.000	ng/ul	# 0.00
38) Acenaphthene-d10	14.827	164	80575	20.000	ng/ul	0.00
64) Phenanthrene-d10	17.577	188	168426	20.000	ng/ul	0.00
79) Chrysene-d12	21.878	240	151176	20.000	ng/ul	0.00
88) Perylene-d12	25.280	264	153549	20.000	ng/ul	0.00
System Monitoring Compounds						
3) 1,4-Dioxane-d8	3.535	96	4157	5.171	ng/uL	0.00
4) Pyridine-d5	3.964	84	53563	22.706	ng/ul	-0.01
7) Phenol-d5	7.366	99	100143	36.270	ng/ul	0.00
9) Bis-(2-Chloroethyl)eth...	7.524	67	81651	47.087	ng/ul	0.00
11) 2-Chlorophenol-d4	7.736	132	63874	32.127	ng/ul	0.00
15) 4-Methylphenol-d8	8.917	113	67073	30.104	ng/ul	0.00
21) Nitrobenzene-d5	9.387	128	41404	41.268	ng/ul	0.00
24) 2-Nitrophenol-d4	10.109	143	39490	34.893	ng/ul	0.00
28) 2,4-Dichlorophenol-d3	10.656	165	66988	34.886	ng/ul	0.00
31) 4-Chloroaniline-d4	11.167	131	81260	28.921	ng/ul	0.00
46) Dimethylphthalate-d6	14.222	166	209471	33.787	ng/ul	0.00
49) Acenaphthylene-d8	14.528	160	286101	36.596	ng/ul	0.00
54) 4-Nitrophenol-d4	15.051	143	28498	28.397	ng/ul	0.00
60) Fluorene-d10	15.820	176	196944	35.276	ng/ul	0.00
65) 4,6-Dinitro-2-methylph...	15.956	200	24515	23.588	ng/ul	0.00
73) Anthracene-d10	17.677	188	299748	37.212	ng/ul	0.00
81) Pyrene-d10	19.957	212	327007	35.749	ng/ul	0.00
92) Benzo(a)pyrene-d12	25.045	264	297015	36.219	ng/ul	0.00
Target Compounds						
26) 2,4-Dimethylphenol	10.227	107	47295m	19.733	ng/ul	Qvalue
30) Naphthalene	11.085	128	585656	90.560	ng/ul	98
36) 2-Methylnaphthalene	12.671	142	251334	57.137	ng/ul	100
37) 1-Methylnaphthalene	12.889	142	132545	29.288	ng/ul	99
43) 1,1'-Biphenyl	13.664	154	35240	5.856	ng/ul	99

(#) = qualifier out of range (m) = manual integration (+) = signals summed