

Data Path : Z:\SVOASRV\HPCHEM1\BNA G\DATA\BG120720\
 Data File : BG047634.D
 Acq On : 8 Dec 2020 2:11
 Operator : CG/JU
 Sample : L4862-11
 Misc :
 ALS Vial : 12 Sample Multiplier: 1

Instrument :
 BNA_G
 ClientSampleId :

Quant Time: Dec 08 04:26:16 2020
 Quant Method : Z:\SVOASRV\HPCHEM1\BNA_G\METHODS\SOM-EPA-BG120720MA.M
 Quant Title : SVOA CALIBRATION
 QLast Update : Tue Dec 08 04:12:44 2020
 Response via : Initial Calibration

Internal Standards	R.T.	QIon	Response	Conc	Units	Dev(Min)
1) 1,4-Dichlorobenzene-d4	8.21	152	27411	20.00	ng/ul	0.00
18) Naphthalene-d8	11.04	136	105686	20.00	ng/ul	0.00
36) Acenaphthene-d10	14.84	164	81447	20.00	ng/ul	0.00
62) Phenanthrene-d10	17.57	188	206214	20.00	ng/ul	0.00
78) Chrysene-d12	21.85	240	208944	20.00	ng/ul	0.00
86) Perylene-d12	25.21	264	221138	20.00	ng/ul	0.00

System Monitoring Compounds

3) 1,4-Dioxane-d8	3.54	96	3178	6.17	ng/uL	0.00
5) Phenol-d5	7.35	99	91577	39.04	ng/ul	0.00
7) Bis-(2-Chloroethyl)ether-d	7.53	67	48492	40.21	ng/ul	0.00
9) 2-Chlorophenol-d4	7.74	132	71066	39.94	ng/ul	0.00
13) 4-Methylphenol-d8	8.91	113	74896	40.22	ng/ul	0.00
19) Nitrobenzene-d5	9.38	128	35314	40.98	ng/ul	0.00
22) 2-Nitrophenol-d4	10.11	143	44747	43.08	ng/ul	0.00
26) 2,4-Dichlorophenol-d3	10.65	165	86101	38.18	ng/ul	0.00
29) 4-Chloroaniline-d4	11.16	131	92308	44.57	ng/ul	0.00
44) Dimethylphthalate-d6	14.23	166	296357	41.89	ng/ul	0.00
47) Acenaphthylene-d8	14.53	160	339202	41.98	ng/ul	0.00
52) 4-Nitrophenol-d4	15.00	143	41634	39.68	ng/ul	0.00
58) Fluorene-d10	15.82	176	267070	41.01	ng/ul	0.00
63) 4,6-Dinitro-2-methylphenol	15.92	200	54840	39.29	ng/ul	0.00
71) Anthracene-d10	17.57	188	206214	20.05	ng/ul	-0.10
79) Pyrene-d10	19.94	212	510230	41.32	ng/ul	0.00
90) Benzo(a)pyrene-d12	24.98	264	528332	40.90	ng/ul	0.01

Target Compounds

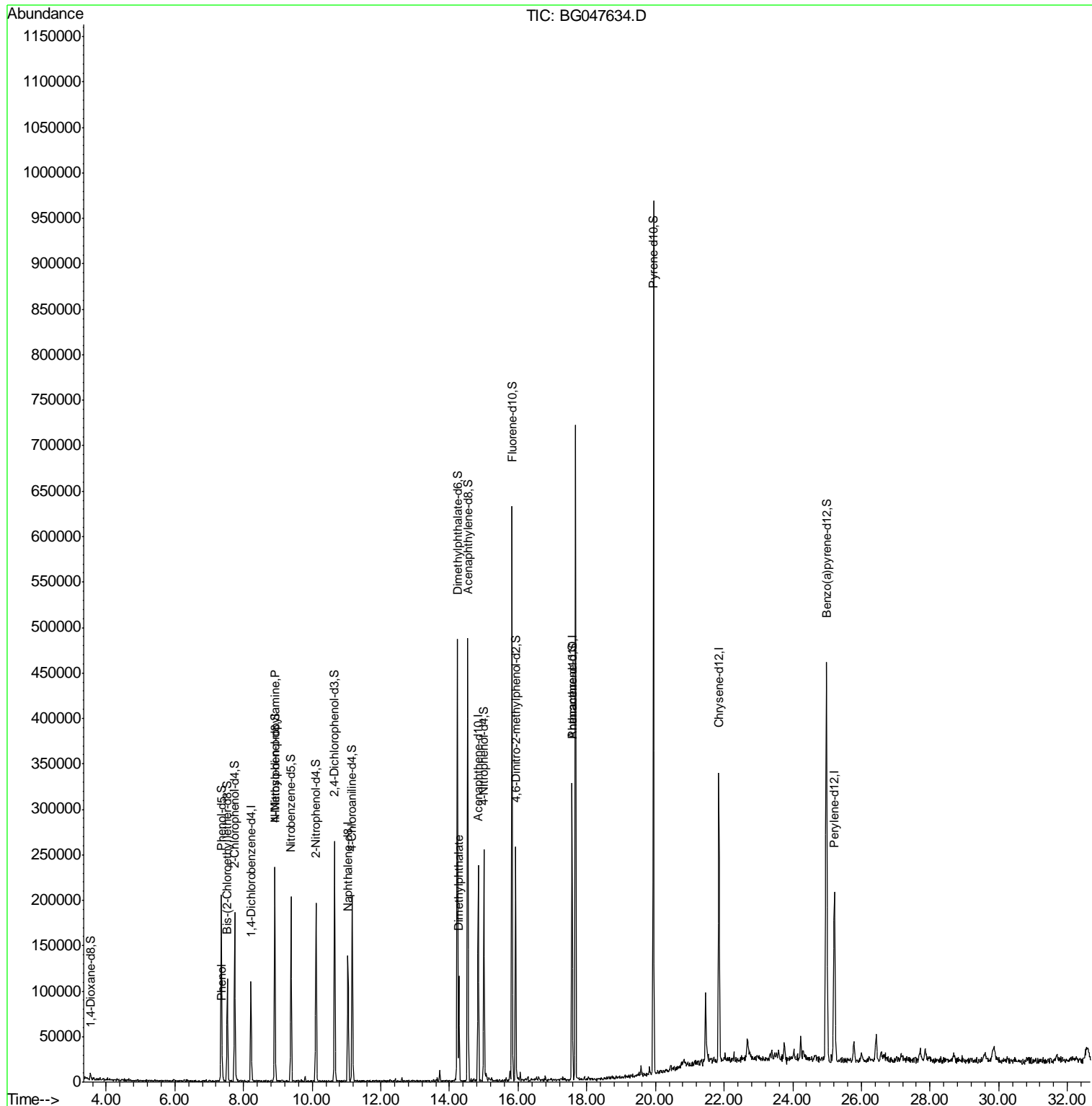
					Ovalue
6) Phenol	7.38	94	7753	3.498	ng/ul# 85
15) N-Nitroso-di-n-propylamine	8.91	70	2647	1.630	ng/ul# 1
45) Dimethylphthalate	14.27	163	61724	8.613	ng/ul# 98

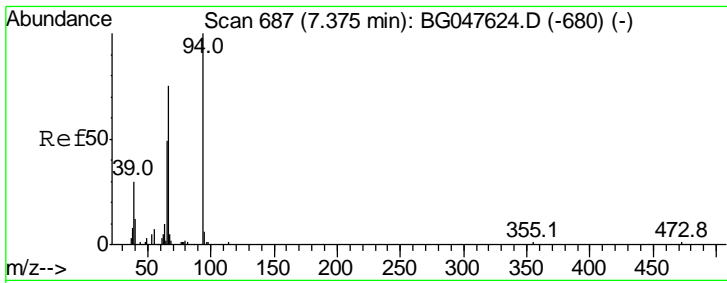
(#) = qualifier out of range (m) = manual integration (+) = signals summed

Data Path : Z:\SVOASRV\HPCHEM1\BNA G\DATA\BG120720\
 Data File : BG047634.D
 Acq On : 8 Dec 2020 2:11
 Operator : CG/JU
 Sample : L4862-11
 Misc :
 ALS Vial : 12 Sample Multiplier: 1

Instrument :
 BNA_G
 ClientSampleId :

Quant Time: Dec 08 04:26:16 2020
 Quant Method : Z:\SVOASRV\HPCHEM1\BNA_G\METHODS\SOM-EPA-BG120720MA.M
 Quant Title : SVOA CALIBRATION
 QLast Update : Tue Dec 08 04:12:44 2020
 Response via : Initial Calibration

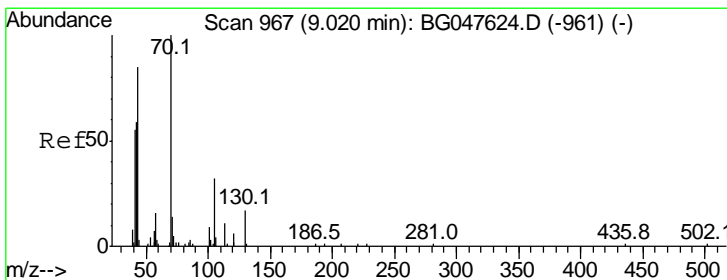
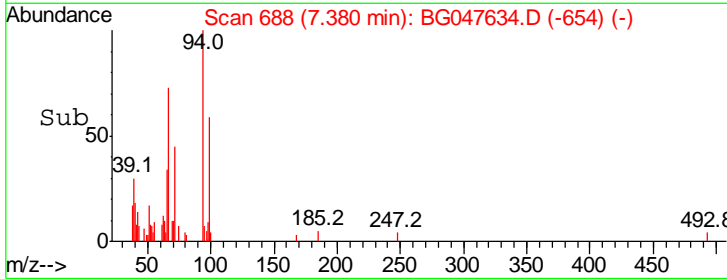
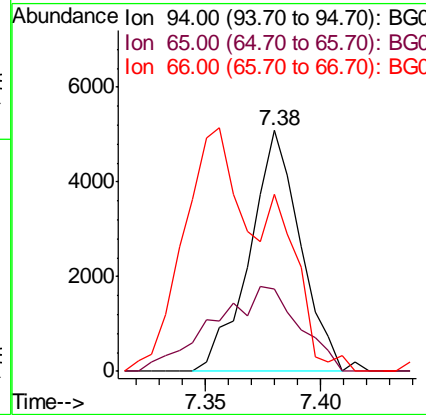
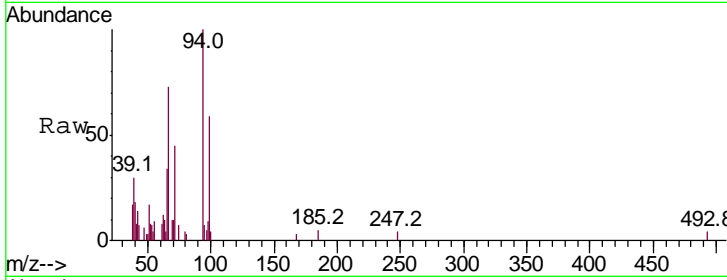




#6
 Phenol
 Concen: 3.498 ng/ul
 RT: 7.38 min Scan# 688
 Delta R.T. -0.00 min
 Lab File: BG047634.D
 Acq: 8 Dec 2020 2:11

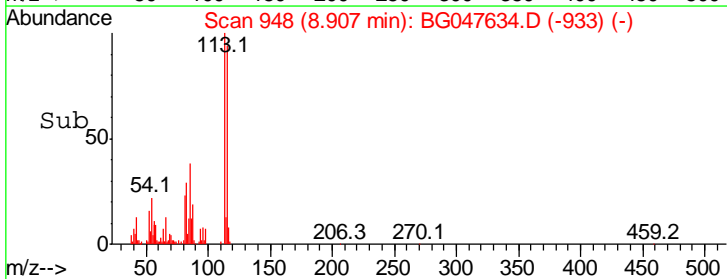
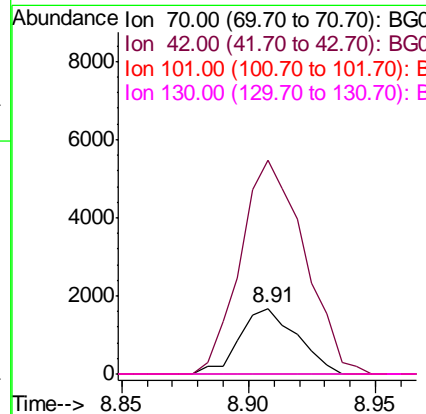
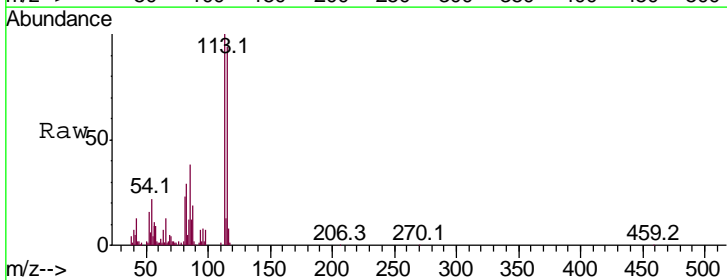
Instrument :
 BNA_G
 ClientSampled :

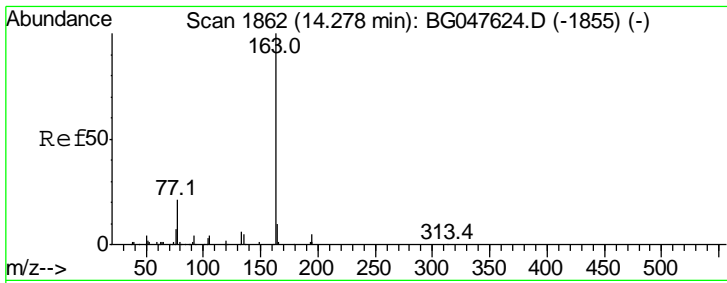
Tgt Ion	Resp	Lower	Upper
94	100		
65	34.2	35.9	53.9#
66	73.5	50.1	75.1



#15
 N-Nitroso-di-n-propylamine
 Concen: 1.630 ng/ul
 RT: 8.91 min Scan# 948
 Delta R.T. -0.11 min
 Lab File: BG047634.D
 Acq: 8 Dec 2020 2:11

Tgt Ion	Resp	Lower	Upper
70	100		
42	327.0	49.9	74.9#
101	0.0	8.2	12.4#
130	0.0	19.5	29.3#





#45
 Dimethylphthalate
 Concen: 8.613 ng/ul
 RT: 14.27 min Scan# 1861
 Delta R.T. -0.00 min
 Lab File: BG047634.D
 Acq: 8 Dec 2020 2:11

Instrument :
 BNA_G
 ClientSampled :

Tot Ion	163	Resp	61724
Ion Ratio	Lower	Upper	
163	100		
194	6.1	3.9	5.9#
164	8.9	7.4	11.2

