

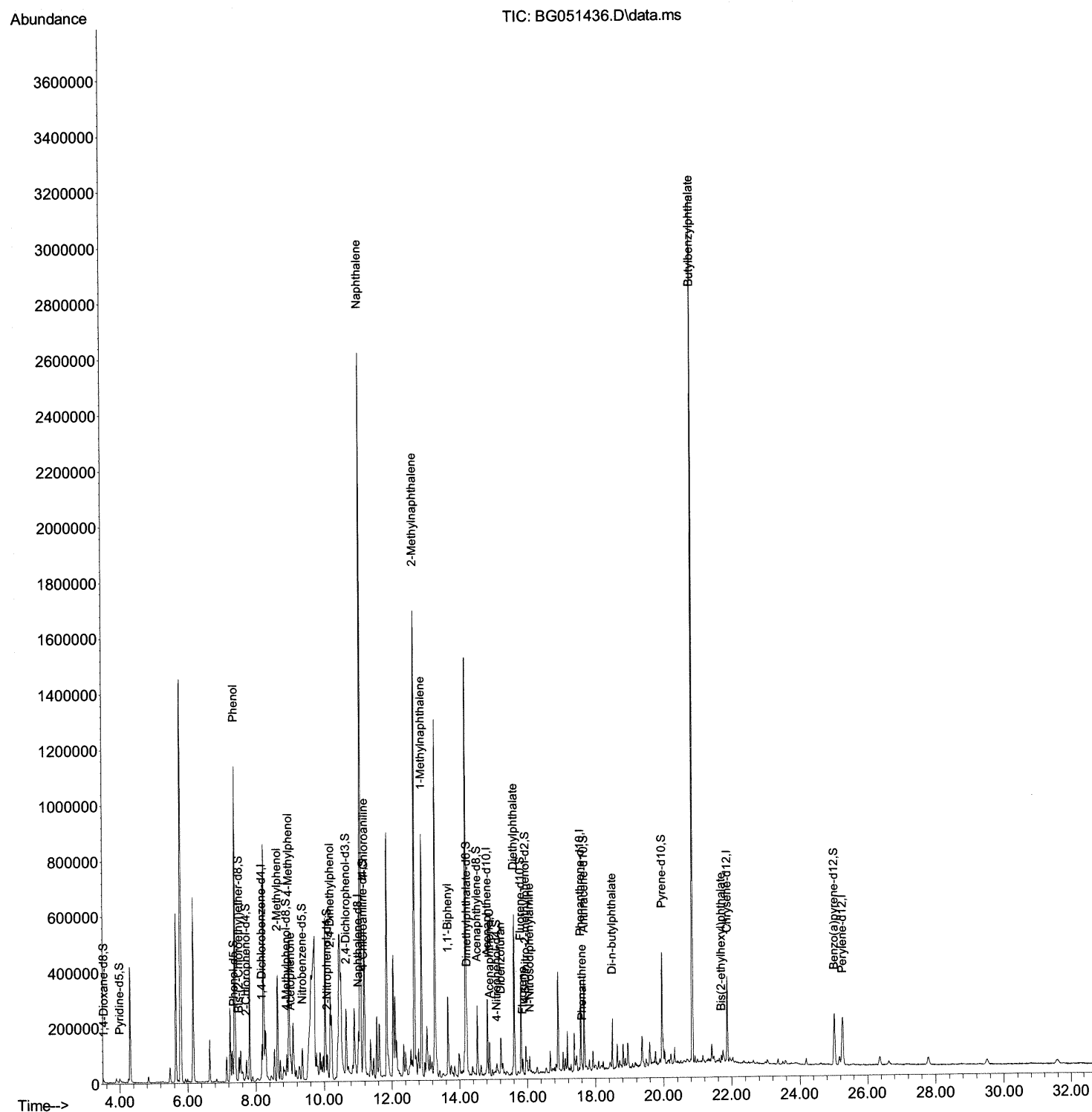
Data Path : Z:\svoasrv\HPCHEM1\BNA_G\Data\BG120921\
Data File : BG051436.D
Acq On : 9 Dec 2021 16:43
Operator : CG/JU
Sample : M4870-09DL 2X
Misc :
ALS Vial : 11 Sample Multiplier: 1

Instrument :
BNA_G
ClientSampleId :
BGKP6DL

Manual IntegrationsAPPROVED

Quant Time: Dec 09 22:26:25 2021
Quant Method : Z:\svoasrv\HPCHEM1\BNA_G\Methods\SFAM-EPA-BG120821.M
Quant Title : SVOA CALIBRATION
QLast Update : Thu Dec 09 03:21:41 2021
Response via : Initial Calibration

Reviewed By :Jagrut Upadhyay 12/10/2021
Supervised By :Yogesh Patel 12/15/2021



Quantitation Report (Qedit)

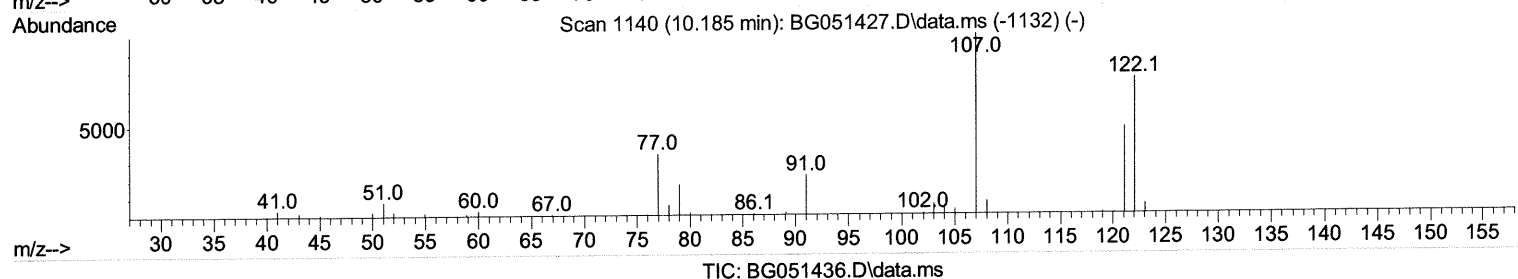
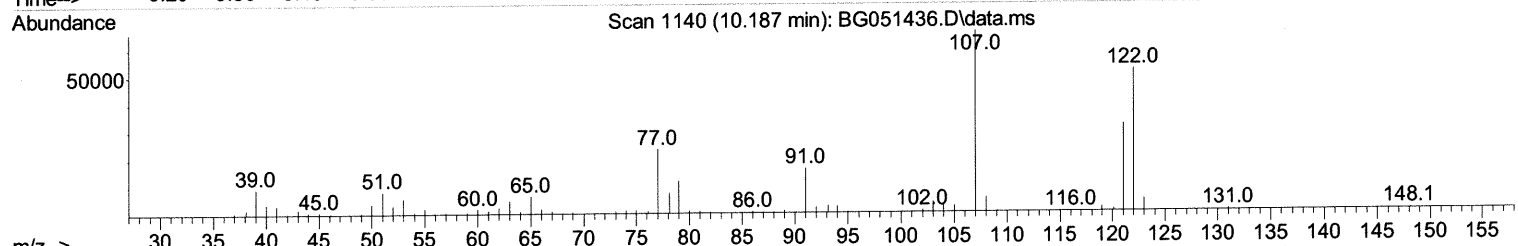
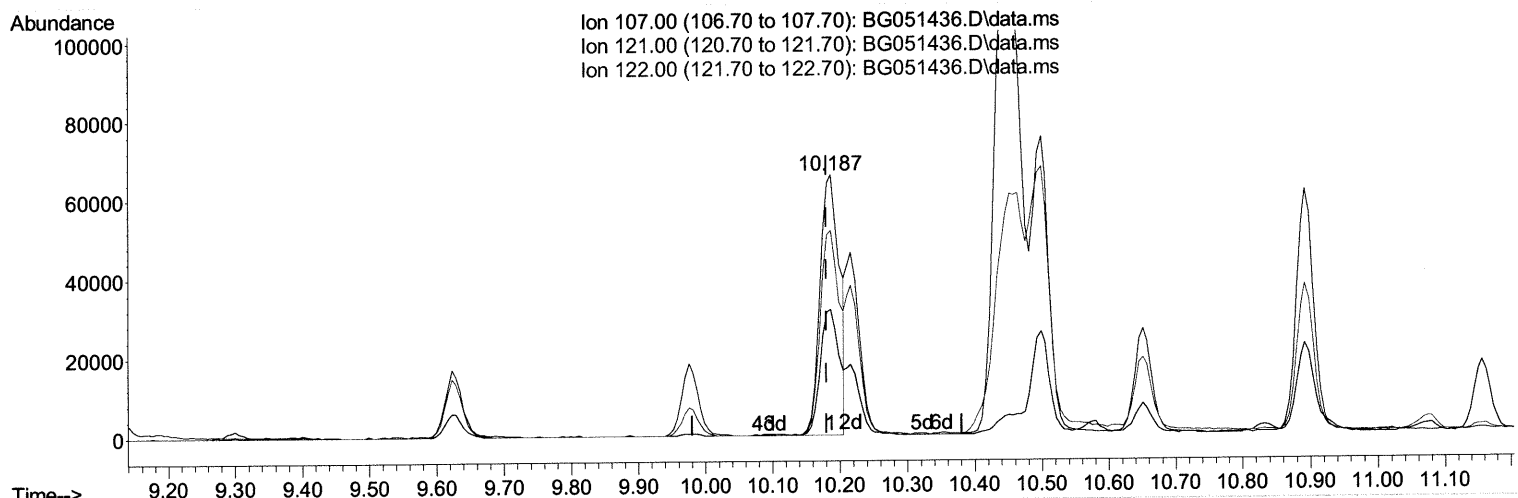
Data Path : Z:\svoasrv\HPCHEM1\BNA_G\Data\BG120921\
Data File : BG051436.D
Acq On : 9 Dec 2021 16:43
Operator : CG/JU
Sample : M4870-09DL 2X
Misc :
ALS Vial : 11 Sample Multiplier: 1

Instrument :
BNA_G
ClientSampleId :
BGKP6DL

Manual IntegrationsAPPROVED

Quant Time: Dec 09 22:26:25 2021
Quant Method : Z:\svoasrv\HPCHEM1\BNA_G\Methods\SFAM-EPA-BG120821.M
Quant Title : SVOA CALIBRATION
QLast Update : Thu Dec 09 03:21:41 2021
Response via : Initial Calibration

Reviewed By :Jagrut Upadhyay 12/10/2021
Supervised By :Yogesh Patel 12/15/2021



(26) 2,4-Dimethylphenol

10.187min (+ 0.006) 42.64 ng/ul

response 129104

Ion	Exp%	Act%
107.00	100.00	100.00
121.00	49.10	48.28
122.00	79.60	78.67
0.00	0.00	0.00

Quantitation Report (Qedit)

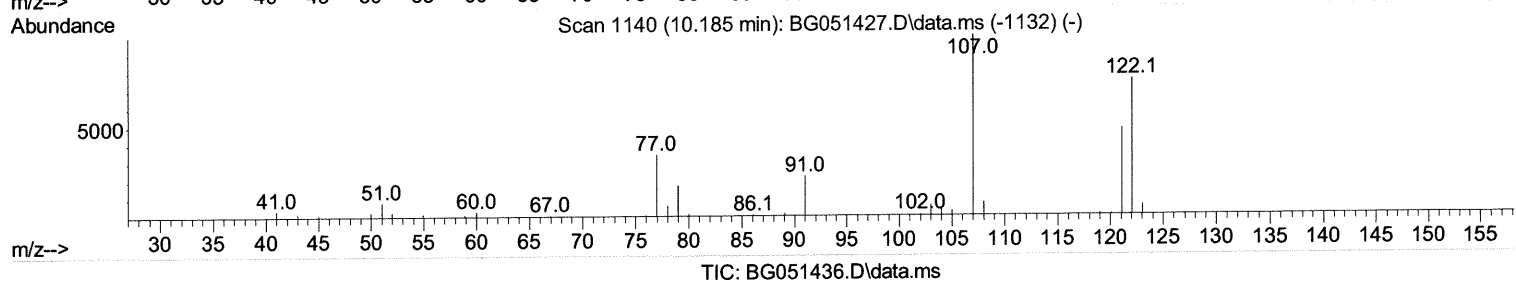
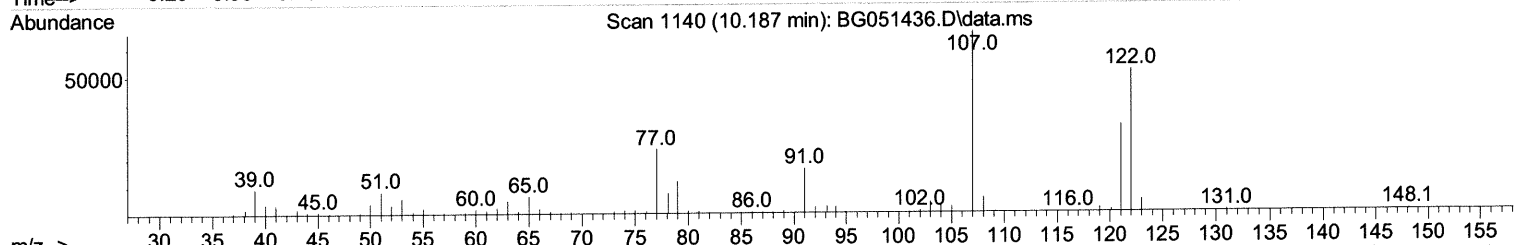
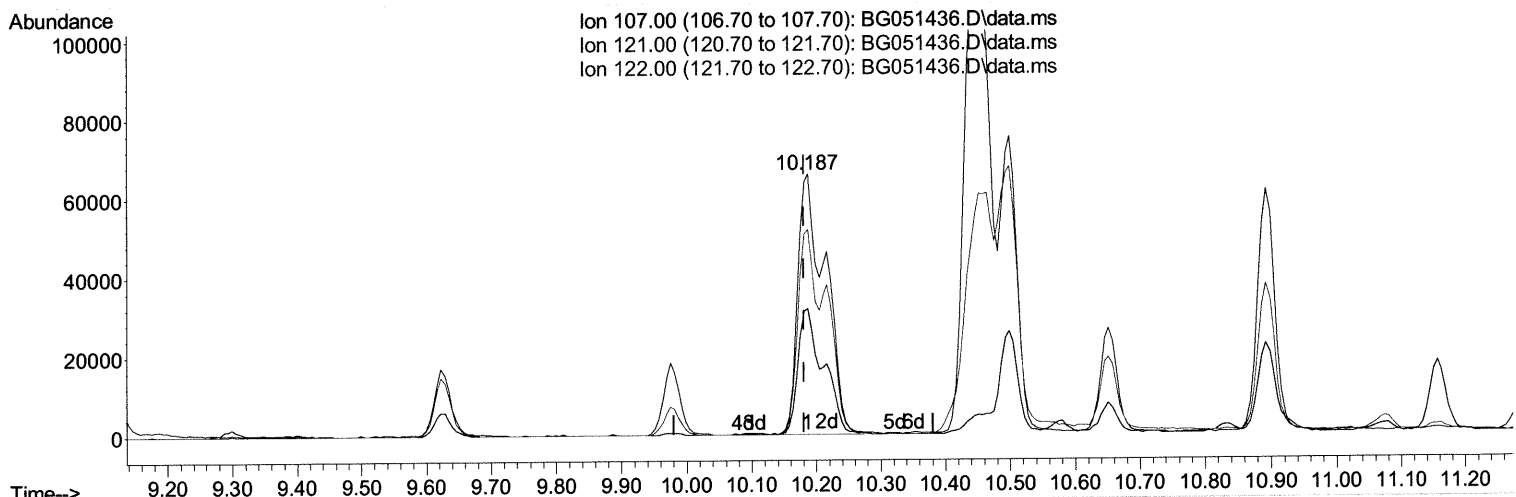
Data Path : Z:\svoasrv\HPCHEM1\BNA_G\Data\BG120921\
 Data File : BG051436.D
 Acq On : 9 Dec 2021 16:43
 Operator : CG/JU
 Sample : M4870-09DL 2X
 Misc :
 ALS Vial : 11 Sample Multiplier: 1

Instrument :
 BNA_G
 ClientSampleId :
 BGKP6DL

Manual IntegrationsAPPROVED

Quant Time: Dec 09 22:26:25 2021
 Quant Method : Z:\svoasrv\HPCHEM1\BNA_G\Methods\SFAM-EPA-BG120821.M
 Quant Title : SVOA CALIBRATION
 QLast Update : Thu Dec 09 03:21:41 2021
 Response via : Initial Calibration

Reviewed By :Jagrut Upadhyay 12/10/2021
 Supervised By :Yogesh Patel 12/15/2021



(26) 2,4-Dimethylphenol

10.187min (+ 0.006) 64.45 ng/ul m 12/16/21JU

response 195157

Ion	Exp%	Act%
107.00	100.00	100.00
121.00	49.10	48.28
122.00	79.60	78.67
0.00	0.00	0.00

Quantitation Report (Qedit)

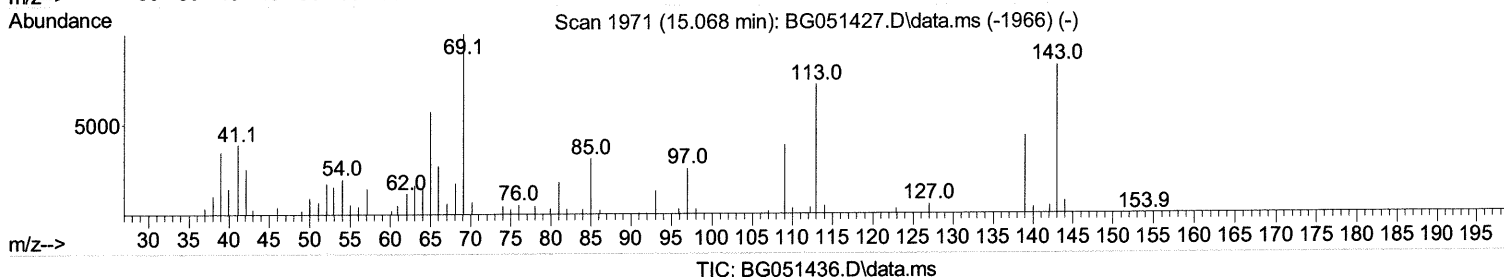
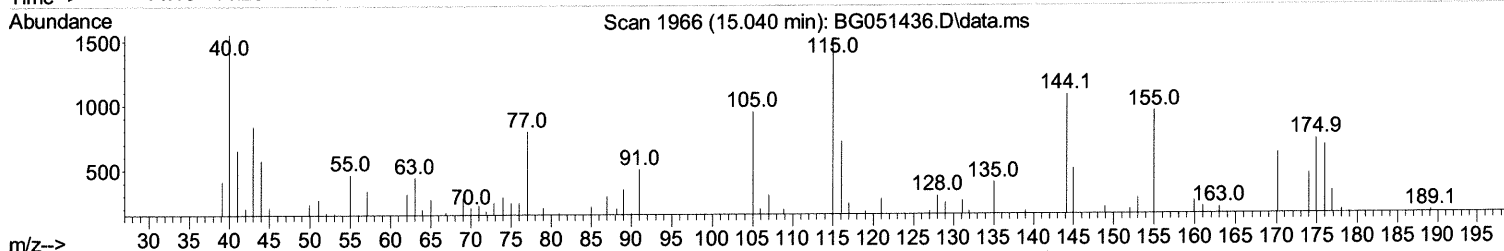
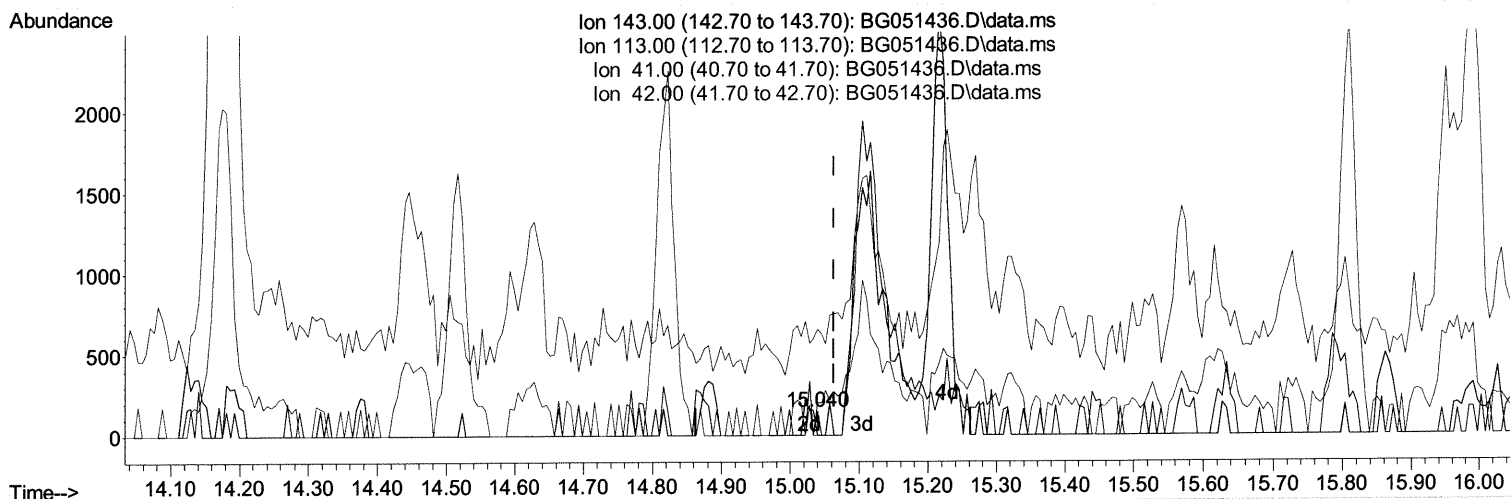
Data Path : Z:\svoasrv\HPCHEM1\BNA_G\Data\BG120921\
 Data File : BG051436.D
 Acq On : 9 Dec 2021 16:43
 Operator : CG/JU
 Sample : M4870-09DL 2X
 Misc :
 ALS Vial : 11 Sample Multiplier: 1

Instrument :
 BNA_G
 ClientSampleId :
 BGKP6DL

Manual IntegrationsAPPROVED

Quant Time: Dec 09 22:26:25 2021
 Quant Method : Z:\svoasrv\HPCHEM1\BNA_G\Methods\SFAM-EPA-BG120821.M
 Quant Title : SVOA CALIBRATION
 QLast Update : Thu Dec 09 03:21:41 2021
 Response via : Initial Calibration

Reviewed By :Jagrut Upadhyay 12/10/2021
 Supervised By :Yogesh Patel 12/15/2021



TIC: BG051436.D\data.ms

(54) 4-Nitrophenol-d4 (S)

15.040min (-0.023) 0.05 ng/ul

response 53

Ion	Exp%	Act%
143.00	100.00	100.00
113.00	80.30	0.00#
41.00	44.40	435.10#
42.00	29.70	134.44#

Quantitation Report (Qedit)

Data Path : Z:\svoasrv\HPCHEM1\BNA_G\Data\BG120921\
 Data File : BG051436.D
 Acq On : 9 Dec 2021 16:23
 Operator : CG/JU
 Sample : M4870-09DL 2X
 Misc :
 ALS Vial : 11 Sample Multiplier: 1

Instrument :

BNA_G

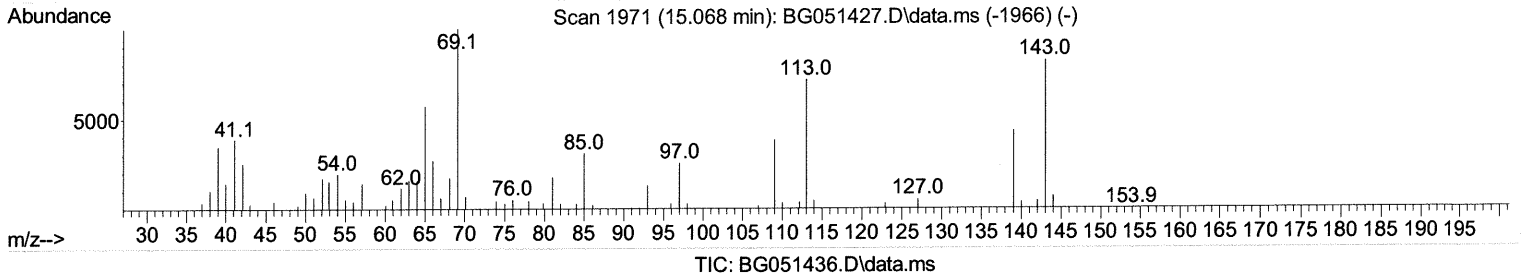
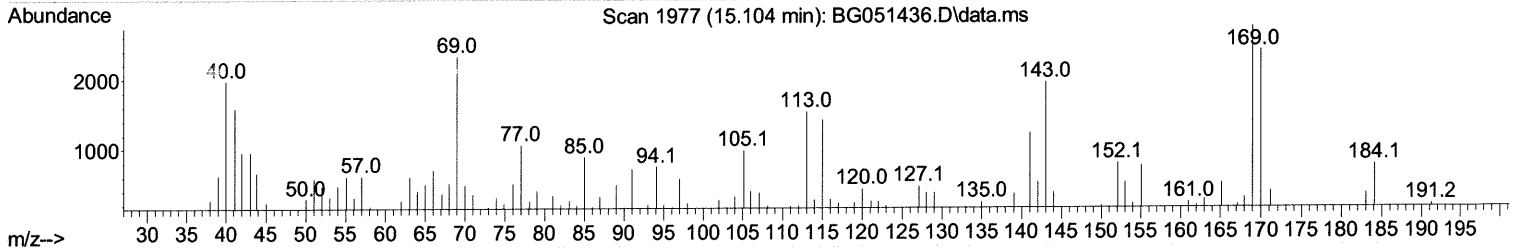
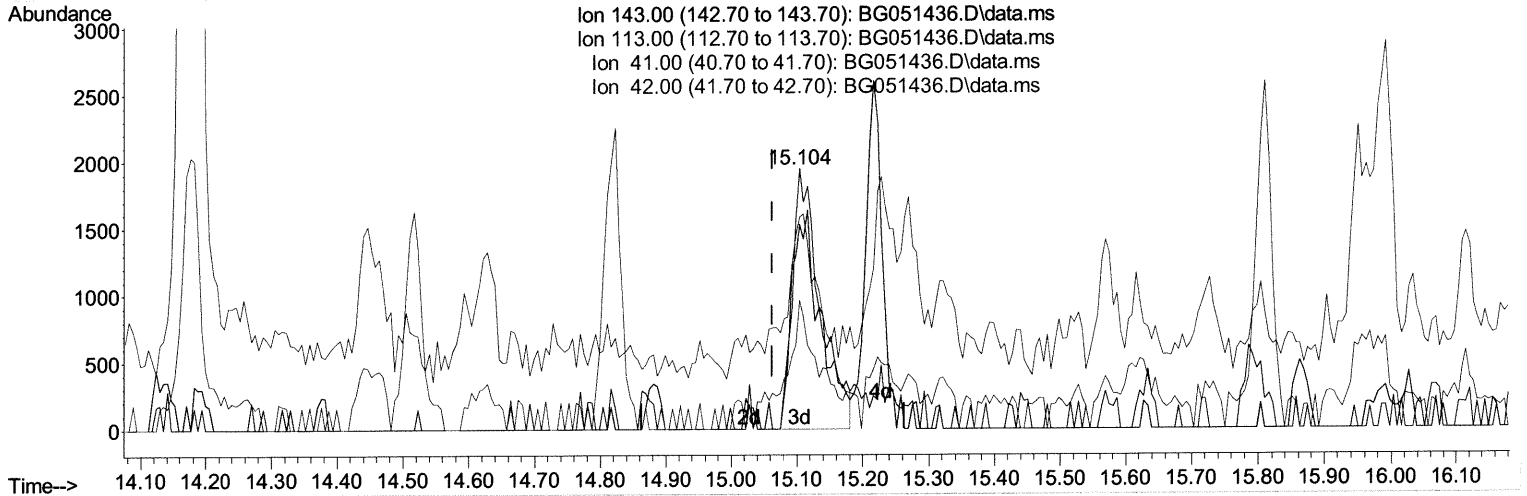
ClientSampleId :

BGKP6DL

Manual IntegrationsAPPROVED

Quant Time: Dec 09 22:26:25 2021
 Quant Method : Z:\svoasrv\HPCHEM1\BNA_G\Methods\SFAM-EPA-BG120821.M
 Quant Title : SVOA CALIBRATION
 QLast Update : Thu Dec 09 03:21:41 2021
 Response via : Initial Calibration

Reviewed By :Jagrut Upadhyay 12/10/2021
 Supervised By :Yogesh Patel 12/15/2021



TIC: BG051436.D\data.ms

(54) 4-Nitrophenol-d4 (S)

15.104min (+ 0.041) 5.04 ng/ul m 12/11/21

response 5678

Ion	Exp%	Act%
143.00	100.00	100.00
113.00	80.30	78.65
41.00	44.40	81.58#
42.00	29.70	49.33#

Data Path : Z:\svoasrv\HPCHEM1\BNA_G\Data\BG120921\
 Data File : BG051436.D
 Acq On : 9 Dec 2021 16:43
 Operator : CG/JU
 Sample : M4870-09DL 2X
 Misc :
 ALS Vial : 11 Sample Multiplier: 1

Instrument :
 BNA_G
 ClientSampleId :
 BGKP6DL

Manual IntegrationsAPPROVED

Reviewed By : Jagrut Upadhyay 12/10/2021
 Supervised By : Yogesh Patel 12/15/2021

Quant Time: Dec 09 22:26:25 2021
 Quant Method : Z:\svoasrv\HPCHEM1\BNA_G\Methods\SFAM-EPA-BG120821.M
 Quant Title : SVOA CALIBRATION
 QLast Update : Thu Dec 09 03:21:41 2021
 Response via : Initial Calibration

Compound	R.T.	QIon	Response	Conc	Units	Dev(Min)

Internal Standards						
1) 1,4-Dichlorobenzene-d4	8.183	152	33529	20.000	ng/ul	0.00
20) Naphthalene-d8	11.015	136	145467	20.000	ng/ul	0.00
38) Acenaphthene-d10	14.822	164	96663	20.000	ng/ul	0.00
64) Phenanthrene-d10	17.566	188	208466	20.000	ng/ul	0.00
79) Chrysene-d12	21.873	240	189228	20.000	ng/ul	0.00
88) Perylene-d12	25.269	264	187928	20.000	ng/ul	0.00
System Monitoring Compounds						
3) 1,4-Dioxane-d8	3.530	96	2232	2.186	ng/uL	0.00
4) Pyridine-d5	3.994	84	10585	3.610	ng/ul	0.03
7) Phenol-d5	7.360	99	15240	4.465	ng/ul	0.00
9) Bis-(2-Chloroethyl)eth...	7.507	67	38324	17.508	ng/ul	0.00
11) 2-Chlorophenol-d4	7.725	132	35561	14.644	ng/ul	0.00
15) 4-Methylphenol-d8	8.912	113	26995	10.067	ng/ul	0.00
21) Nitrobenzene-d5	9.370	128	23773	18.839	ng/ul	0.00
24) 2-Nitrophenol-d4	10.092	143	24839	17.395	ng/ul	0.00
28) 2,4-Dichlorophenol-d3	10.651	165	40739	17.538	ng/ul	0.00
31) 4-Chloroaniline-d4	11.162	131	37000	10.890	ng/ul	0.00
46) Dimethylphthalate-d6	14.217	166	135128	18.066	ng/ul	0.00
49) Acenaphthylene-d8	14.517	160	181077	19.115	ng/ul	0.00
54) 4-Nitrophenol-d4	15.104	143	5678m >	5.042	ng/ul >	0.0412/16/21 JU
60) Fluorene-d10	15.809	176	126068	18.934	ng/ul	0.00
65) 4,6-Dinitro-2-methylph...	15.956	200	23682	19.117	ng/ul	0.00
73) Anthracene-d10	17.672	188	198338	20.334	ng/ul	0.00
81) Pyrene-d10	19.952	212	227854	20.033	ng/ul	0.00
92) Benzo(a)pyrene-d12	25.028	264	196094	20.230	ng/ul	0.00
Target Compounds				Qvalue		
8) Phenol	7.390	94	607261	173.816	ng/ul	95
13) 2-Methylphenol	8.641	108	130792	50.283	ng/ul	95
16) Acetophenone	9.023	105	39009	9.395	ng/ul	99
18) 4-Methylphenol	8.976	108	196024	71.737	ng/ul	97
26) 2,4-Dimethylphenol	10.187	107	195157m >	64.452	ng/ul >	12/16/21 JU
30) Naphthalene	11.074	128	2111723	264.348	ng/ul#	95
32) 4-Chloroaniline	11.185	127	220453	64.502	ng/ul	99
36) 2-Methylnaphthalene	12.660	142	804474	151.015	ng/ul	100
37) 1-Methylnaphthalene	12.877	142	369495	67.386	ng/ul	97
43) 1,1'-Biphenyl	13.653	154	123925	17.148	ng/ul	98
52) Acenaphthene	14.881	153	49842	8.126	ng/ul	96
56) Dibenzofuran	15.216	168	70696	8.130	ng/ul	98
59) Diethylphthalate	15.610	149	317056	38.970	ng/ul	99
61) Fluorene	15.862	166	25370	3.603	ng/ul	92
67) N-Nitrosodiphenylamine	16.068	169	23858	4.105	ng/ul	99
72) Phenanthrene	17.613	178	13874	1.235	ng/ul	98
78) Di-n-butylphthalate	18.500	149	132935	9.907	ng/ul	99
83) Butylbenzylphthalate	20.845	149	920479	153.573	ng/ul	98
86) Bis(2-ethylhexyl)phtha...	21.702	149	12316	1.479	ng/ul	96

(#) = qualifier out of range (m) = manual integration (+) = signals summed