

Data Path : Z:\svoasrv\HPCHEM1\BNA_G\Data\BG120921\
 Data File : BG051474.D
 Acq On : 11 Dec 2021 3:52
 Operator : CG/JU
 Sample : M5009-02
 Misc :
 ALS Vial : 23 Sample Multiplier: 1

Instrument :
 BNA_G
 ClientSampleId :
 A0020

Integration Parameters: LSCINT.P
 Integrator: RTE
 Smoothing : OFF Filtering: 5
 Sampling : 1 Min Area: 0.1 % of largest Peak
 Start Thrs: 0.2 Max Peaks: 100
 Stop Thrs : 0 Peak Location: TOP

If leading or trailing edge < 100 prefer < Baseline drop else tangent >
 Peak separation: 5

Method : Z:\svoasrv\HPCHEM1\BNA_G\Methods\SFAM-EPA-BG120821.M
 Title : SVOA CALIBRATION

Signal : TIC: BG051474.D\data.ms

peak #	R.T. min	first scan	max scan	last scan	PK TY	peak height	corr. area	corr. % max.	% of total
1	3.529	4	7	11	rBV3	4282	5876	0.72%	0.059%
2	4.017	88	90	93	rBV3	4335	6717	0.82%	0.067%
3	4.310	135	140	143	rVV4	1499	2685	0.33%	0.027%
4	4.516	171	175	176	rBV3	2431	3053	0.37%	0.030%
5	4.686	200	204	210	rBV4	1453	3285	0.40%	0.033%
6	5.268	300	303	305	rVV3	3946	4791	0.59%	0.048%
7	6.002	424	428	434	rVV2	3565	5970	0.73%	0.060%
8	6.220	461	465	468	rBV4	1644	2507	0.31%	0.025%
9	6.807	560	565	572	rVV3	5502	11868	1.46%	0.118%
10	6.872	572	576	584	rVB4	3025	5610	0.69%	0.056%
11	7.383	658	663	677	rBV4	14714	40033	4.91%	0.399%
12	7.501	677	683	695	rVB	64798	119089	14.62%	1.188%
13	7.618	700	703	708	rBV3	1622	2516	0.31%	0.025%
14	7.730	716	722	731	rBV	61175	119432	14.66%	1.192%
15	7.982	759	765	771	rBV2	1874	4003	0.49%	0.040%
16	8.182	793	799	805	rBV	79881	144397	17.72%	1.441%
17	8.235	805	808	818	rVV2	9020	17799	2.18%	0.178%
18	8.923	915	925	938	rBV	49279	121559	14.92%	1.213%
19	9.040	943	945	953	rVB4	3435	6394	0.78%	0.064%
20	9.293	985	988	995	rBV3	1451	3164	0.39%	0.032%
21	9.369	995	1001	1015	rBV	83923	168125	20.63%	1.678%
22	9.692	1051	1056	1062	rBV3	6019	8797	1.08%	0.088%
23	10.098	1118	1125	1136	rBV2	67341	136027	16.69%	1.357%
24	10.292	1152	1158	1169	rBV	56288	104753	12.86%	1.045%
25	10.662	1214	1221	1235	rBV	80217	190045	23.32%	1.896%
26	10.779	1235	1241	1255	rVB6	14758	40052	4.92%	0.400%
27	11.008	1270	1280	1291	rVB	118101	221570	27.19%	2.211%
28	11.167	1300	1307	1325	rBV2	61594	152651	18.73%	1.523%
29	11.414	1342	1349	1357	rBV9	6300	21800	2.68%	0.218%
30	11.520	1360	1367	1374	rVV4	6465	17894	2.20%	0.179%
31	11.578	1374	1377	1385	rVB6	3968	8278	1.02%	0.083%
32	11.696	1392	1397	1406	rBV	8587	18530	2.27%	0.185%
33	11.784	1407	1412	1414	rVV2	2756	3960	0.49%	0.040%
34	12.160	1471	1476	1479	rBV3	6338	10968	1.35%	0.109%
35	12.195	1479	1482	1483	rVV3	3293	3815	0.47%	0.038%
36	12.266	1491	1494	1505	rVB3	8126	16912	2.08%	0.169%

Data Path : Z:\svoasrv\HPCHEM1\BNA_G\Data\BG120921\
 Data File : BG051474.D
 Acq On : 11 Dec 2021 3:52
 Operator : CG/JU
 Sample : M5009-02
 Misc :
 ALS Vial : 23 Sample Multiplier: 1

Instrument :
 BNA_G
 ClientSampleId :
 A0020

Integration Parameters: LSCINT.P

Integrator: RTE
 Smoothing : OFF Filtering: 5
 Sampling : 1 Min Area: 0.1 % of largest Peak
 Start Thrs: 0.2 Max Peaks: 100
 Stop Thrs : 0 Peak Location: TOP

If leading or trailing edge < 100 prefer < Baseline drop else tangent >
 Peak separation: 5

Method : Z:\svoasrv\HPCHEM1\BNA_G\Methods\SFAM-EPA-BG120821.M
 Title : SVOA CALIBRATION

37	12.442	1514	1524	1528	rVV2	14390	36360	4.46%	0.363%
38	12.495	1528	1533	1544	rVV2	17285	42044	5.16%	0.420%
39	12.595	1547	1550	1555	rVB2	1333	2696	0.33%	0.027%
40	12.706	1565	1569	1575	rBV5	1644	3771	0.46%	0.038%
41	13.035	1620	1625	1630	rBV4	5379	9405	1.15%	0.094%
42	13.159	1639	1646	1668	rBV	440412	811959	99.65%	8.102%
43	13.406	1682	1688	1701	rBV	271745	423090	51.92%	4.222%
44	13.547	1708	1712	1717	rVB3	3267	5277	0.65%	0.053%
45	13.599	1717	1721	1725	rVV2	2534	3403	0.42%	0.034%
46	13.682	1727	1735	1747	rVB2	41678	73242	8.99%	0.731%
47	14.152	1809	1815	1820	rBV	58353	94431	11.59%	0.942%
48	14.210	1820	1825	1831	rVV	245304	373152	45.79%	3.723%
49	14.257	1831	1833	1840	rVB3	9174	13145	1.61%	0.131%
50	14.404	1856	1858	1862	rBV4	1683	2599	0.32%	0.026%
51	14.451	1862	1866	1871	rVV4	5262	10187	1.25%	0.102%
52	14.516	1871	1877	1883	rVV	254963	421954	51.78%	4.210%
53	14.575	1883	1887	1895	rVB	25695	42341	5.20%	0.422%
54	14.816	1915	1928	1939	rBV	193566	320990	39.39%	3.203%
55	15.162	1977	1987	1998	rBV9	7278	28149	3.45%	0.281%
56	15.262	2000	2004	2007	rVV4	2455	4494	0.55%	0.045%
57	15.339	2011	2017	2021	rVV5	4999	9250	1.14%	0.092%
58	15.397	2021	2027	2033	rVB5	7136	13056	1.60%	0.130%
59	15.532	2042	2050	2058	rBV	269780	420125	51.56%	4.192%
60	15.609	2058	2063	2069	rVB	228249	312484	38.35%	3.118%
61	15.809	2090	2097	2105	rBV	335923	534762	65.63%	5.336%
62	15.955	2116	2122	2135	rBV2	90033	185595	22.78%	1.852%
63	16.044	2135	2137	2140	rVV2	3385	4487	0.55%	0.045%
64	16.073	2140	2142	2147	rVV5	3303	5358	0.66%	0.053%
65	16.144	2147	2154	2157	rVV2	24169	39053	4.79%	0.390%
66	16.185	2157	2161	2170	rVV	53375	115610	14.19%	1.154%
67	16.249	2170	2172	2179	rVB7	6804	9292	1.14%	0.093%
68	16.549	2220	2223	2232	rVB6	1988	3294	0.40%	0.033%
69	16.643	2234	2239	2243	rBV5	2185	3127	0.38%	0.031%
70	16.802	2261	2266	2273	rBV	14620	29558	3.63%	0.295%
71	16.913	2281	2285	2290	rBV5	10550	15751	1.93%	0.157%
72	16.954	2290	2292	2293	rVV	3005	2603	0.32%	0.026%
73	16.972	2293	2295	2298	rVV3	3101	2961	0.36%	0.030%
74	17.007	2299	2301	2306	rVB4	1711	2515	0.31%	0.025%
75	17.207	2331	2335	2341	rBV6	2291	3453	0.42%	0.034%
76	17.295	2344	2350	2354	rVB	25427	35317	4.33%	0.352%

Data Path : Z:\svoasrv\HPCHEM1\BNA_G\Data\BG120921\
 Data File : BG051474.D
 Acq On : 11 Dec 2021 3:52
 Operator : CG/JU
 Sample : M5009-02
 Misc :
 ALS Vial : 23 Sample Multiplier: 1

Instrument :
 BNA_G
 ClientSampleId :
 A0020

Integration Parameters: LSCINT.P

Integrator: RTE
 Smoothing : OFF Filtering: 5
 Sampling : 1 Min Area: 0.1 % of largest Peak
 Start Thrs: 0.2 Max Peaks: 100
 Stop Thrs : 0 Peak Location: TOP

If leading or trailing edge < 100 prefer < Baseline drop else tangent >
 Peak separation: 5

Method : Z:\svoasrv\HPCHEM1\BNA_G\Methods\SFAM-EPA-BG120821.M
 Title : SVOA CALIBRATION

77	17.395	2360	2367	2371	rBV7	7060	12160	1.49%	0.121%
78	17.565	2390	2396	2405	rBV	252630	393416	48.28%	3.926%
79	17.665	2407	2413	2425	rBV2	415951	660394	81.05%	6.590%
80	17.812	2432	2438	2442	rBV	26325	35446	4.35%	0.354%
81	17.906	2450	2454	2462	rBV4	4499	10010	1.23%	0.100%
82	18.270	2511	2516	2520	rBV4	5900	9682	1.19%	0.097%
83	18.394	2529	2537	2542	rBV5	11720	19887	2.44%	0.198%
84	18.447	2542	2546	2549	rVV5	3594	5657	0.69%	0.056%
85	18.494	2549	2554	2557	rVV	72240	95148	11.68%	0.949%
86	18.529	2557	2560	2572	rVB	46260	72354	8.88%	0.722%
87	18.688	2582	2587	2589	rBV4	3662	5500	0.67%	0.055%
88	18.723	2589	2593	2602	rVB2	31413	43432	5.33%	0.433%
89	18.940	2625	2630	2634	rVV	49320	64244	7.88%	0.641%
90	19.275	2685	2687	2690	rVB4	2177	2607	0.32%	0.026%
91	19.516	2724	2728	2731	rVB4	6016	8370	1.03%	0.084%
92	19.592	2737	2741	2745	rBV2	5338	7956	0.98%	0.079%
93	19.634	2745	2748	2752	rVB5	6531	8912	1.09%	0.089%
94	19.722	2759	2763	2768	rVB6	2327	2902	0.36%	0.029%
95	19.822	2773	2780	2783	rVB7	3354	6816	0.84%	0.068%
96	19.945	2795	2801	2813	rBV	534475	814839	100.00%	8.131%
97	21.872	3122	3129	3141	rBV	218518	415972	51.05%	4.151%
98	25.033	3656	3667	3682	rBV3	233639	724286	88.89%	7.227%
99	25.262	3697	3706	3721	rVB2	114959	373075	45.79%	3.723%
100	29.857	4486	4488	4489	rBV2	4768	3262	0.40%	0.033%

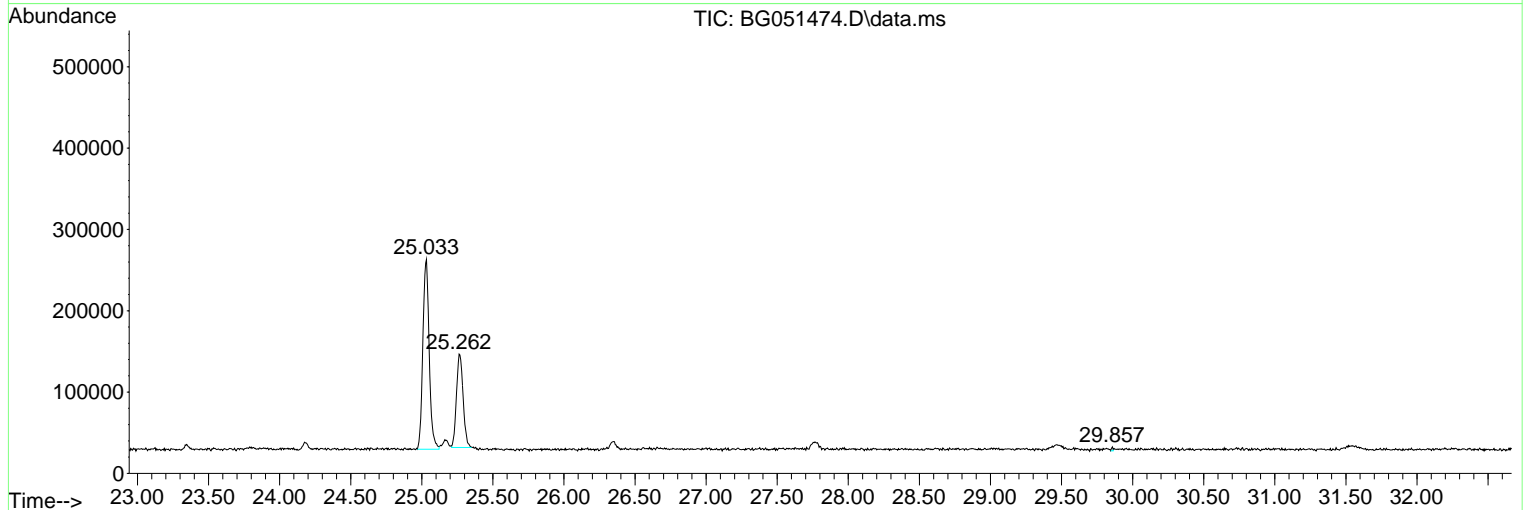
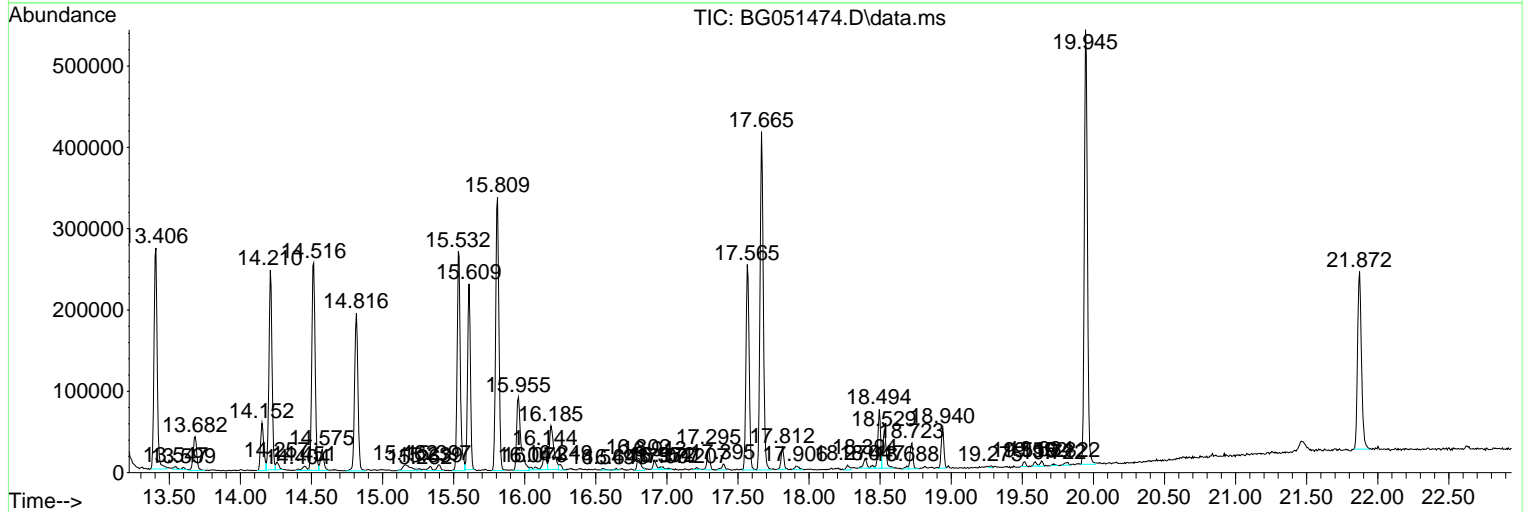
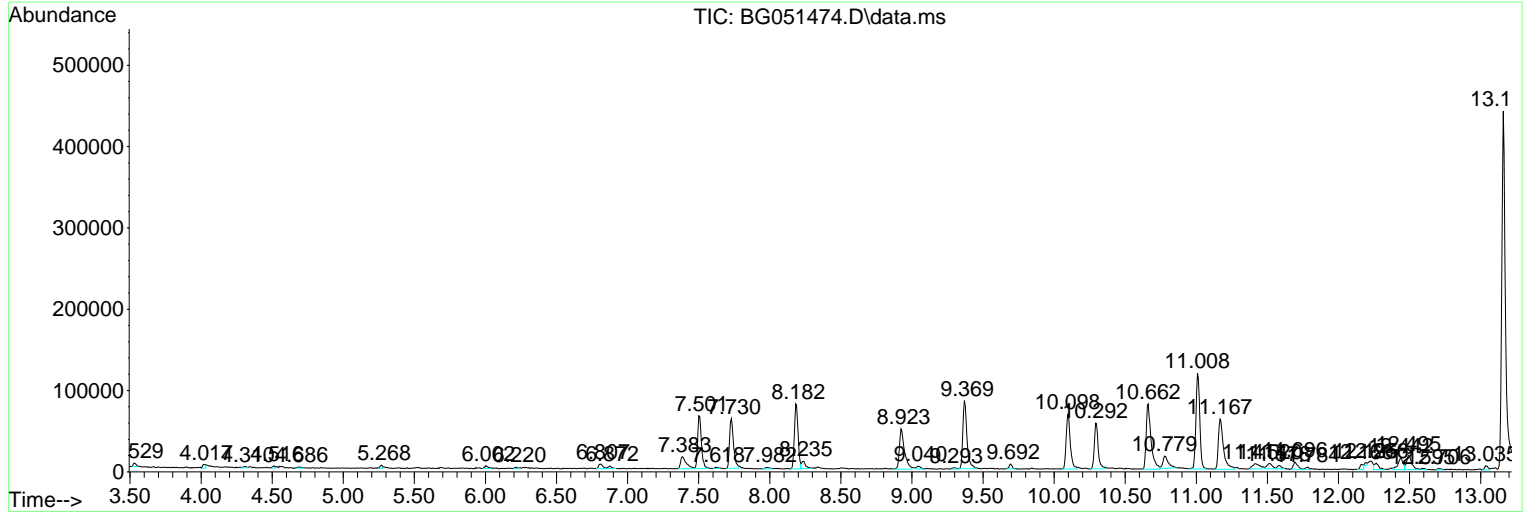
Sum of corrected areas: 10021592

Data Path : Z:\svoasrv\HPCHEM1\BNA_G\Data\BG120921\
 Data File : BG051474.D
 Acq On : 11 Dec 2021 3:52
 Operator : CG/JU
 Sample : M5009-02
 Misc :
 ALS Vial : 23 Sample Multiplier: 1

Instrument :
 BNA_G
 ClientSampleId :
 A0020

Quant Method : Z:\svoasrv\HPCHEM1\BNA_G\Methods\SFAM-EPA-BG120821.M
 Quant Title : SVOA CALIBRATION

TIC Library : C:\DATABASE\NIST20.L
 TIC Integration Parameters: LSCINT.P



Data Path : Z:\svoasrv\HPCHEM1\BNA_G\Data\BG120921\
 Data File : BG051474.D
 Acq On : 11 Dec 2021 3:52
 Operator : CG/JU
 Sample : M5009-02
 Misc :
 ALS Vial : 23 Sample Multiplier: 1

Instrument :
 BNA_G
 ClientSampleId :
 A0020

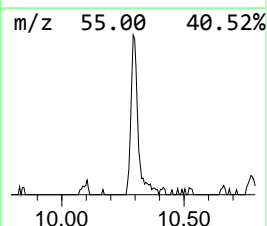
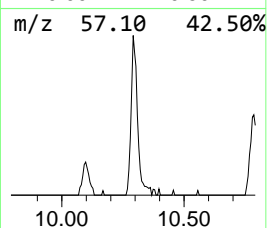
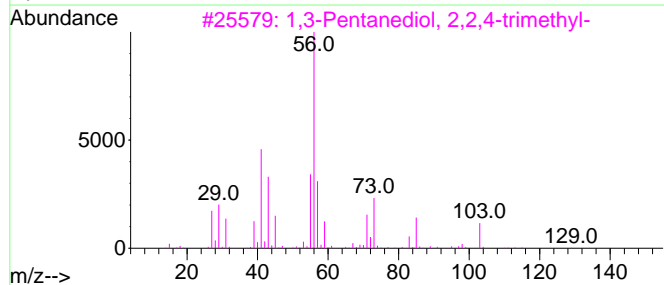
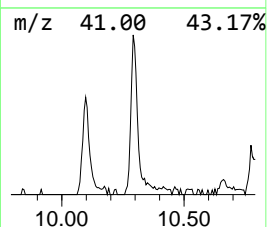
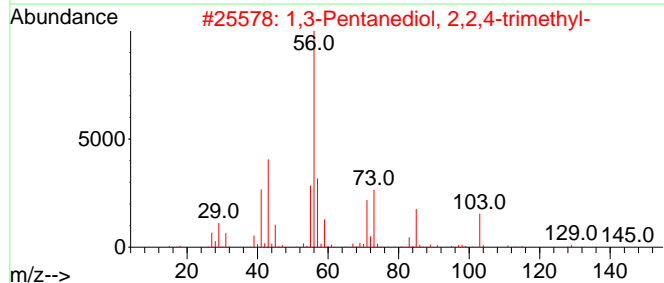
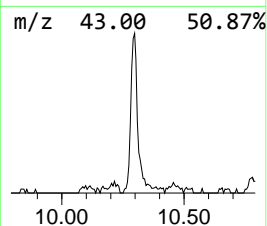
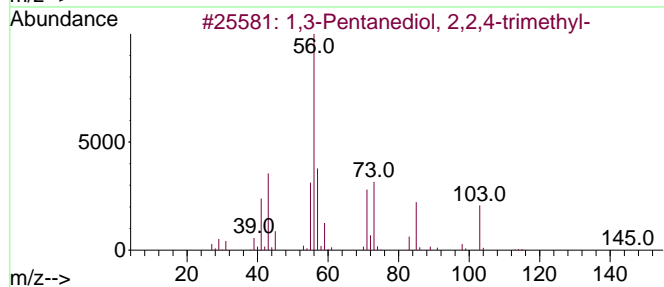
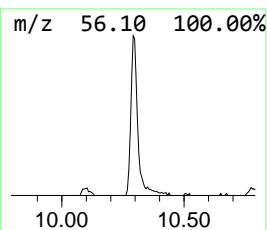
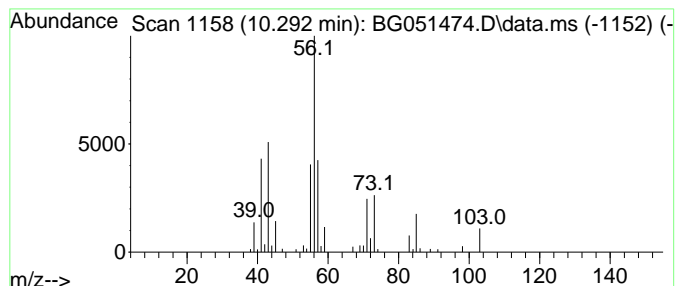
Quant Method : Z:\svoasrv\HPCHEM1\BNA_G\Methods\SFAM-EPA-BG120821.M
 Quant Title : SVOA CALIBRATION

TIC Library : C:\DATABASE\NIST20.L
 TIC Integration Parameters: LSCINT.P

 Peak Number 1 1,3-Pentenediol, 2,2,4-trimethyl... Concentration Rank 4

R.T.	EstConc	Area	Relative to ISTD	R.T.
10.291	9.46 ng/ul	104753	Naphthalene-d8	11.008

Hit#	of 5	Tentative ID	MW	MolForm	CAS#	Qual
1		1,3-Pentenediol, 2,2,4-trimethyl-	146	C8H18O2	000144-19-4	86
2		1,3-Pentenediol, 2,2,4-trimethyl-	146	C8H18O2	000144-19-4	83
3		1,3-Pentenediol, 2,2,4-trimethyl-	146	C8H18O2	000144-19-4	64
4		1,3-Pentenediol, 2,2,4-trimethyl-	146	C8H18O2	000144-19-4	50
5		Pentane, 2,3-dimethyl-	100	C7H16	000565-59-3	40



Data Path : Z:\svoasrv\HPCHEM1\BNA_G\Data\BG120921\
 Data File : BG051474.D
 Acq On : 11 Dec 2021 3:52
 Operator : CG/JU
 Sample : M5009-02
 Misc :
 ALS Vial : 23 Sample Multiplier: 1

Instrument :
 BNA_G
 ClientSampleId :
 A0020

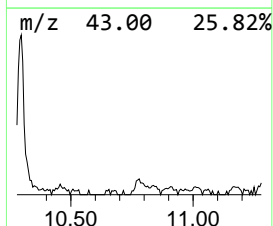
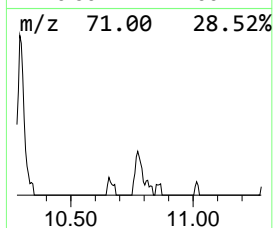
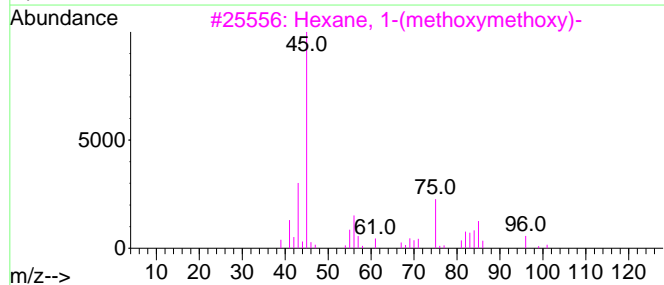
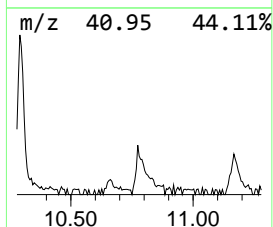
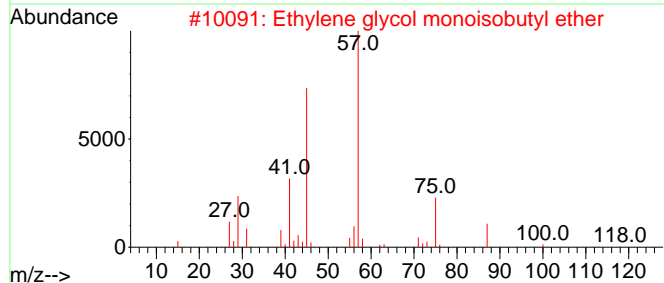
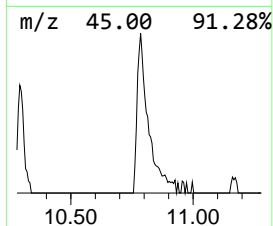
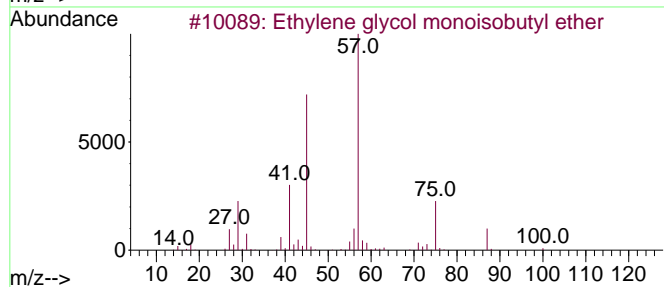
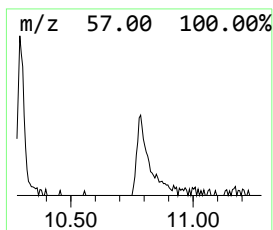
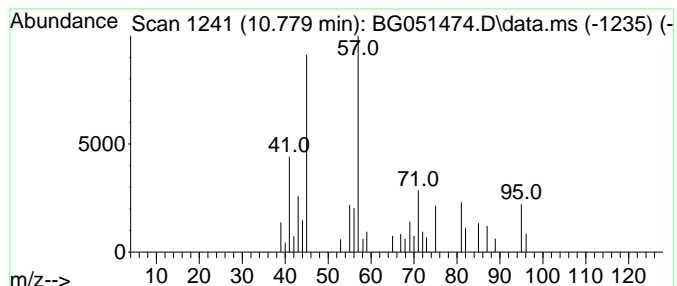
Quant Method : Z:\svoasrv\HPCHEM1\BNA_G\Methods\SFAM-EPA-BG120821.M
 Quant Title : SVOA CALIBRATION

TIC Library : C:\DATABASE\NIST20.L
 TIC Integration Parameters: LSCINT.P

 Peak Number 2 unknown-01 Concentration Rank 9

R.T.	EstConc	Area	Relative to ISTD	R.T.
10.779	3.62 ng/ul	40052	Naphthalene-d8	11.008

Hit#	of 5	Tentative ID	MW	MolForm	CAS#	Qual
1		Ethylene glycol monoisobutyl ether	118	C6H14O2	004439-24-1	40
2		Ethylene glycol monoisobutyl ether	118	C6H14O2	004439-24-1	40
3		Hexane, 1-(methoxymethoxy)-	146	C8H18O2	066675-06-7	38
4		3-Buten-2-ol	72	C4H8O	000598-32-3	23
5		3-Methyl-5-methoxy-1-pentanol	132	C7H16O2	070928-41-5	23



Data Path : Z:\svoasrv\HPCHEM1\BNA_G\Data\BG120921\
 Data File : BG051474.D
 Acq On : 11 Dec 2021 3:52
 Operator : CG/JU
 Sample : M5009-02
 Misc :
 ALS Vial : 23 Sample Multiplier: 1

Instrument :
 BNA_G
 ClientSampleId :
 A0020

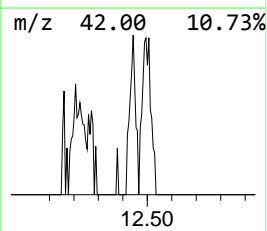
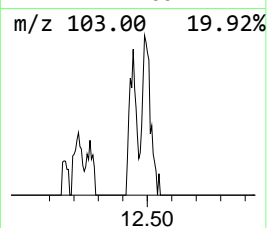
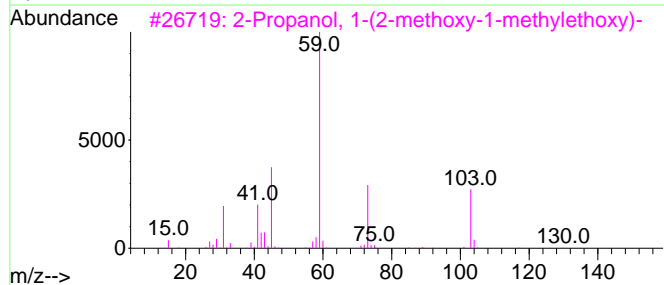
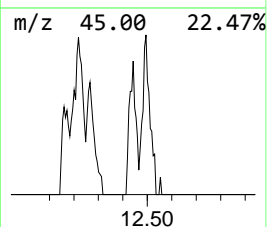
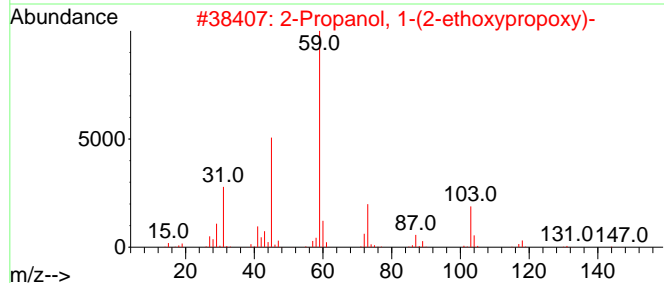
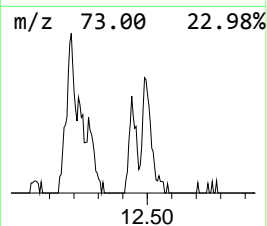
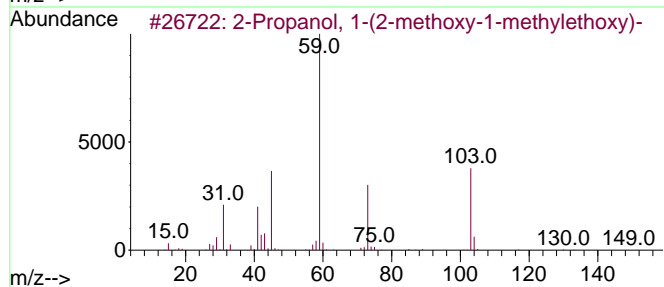
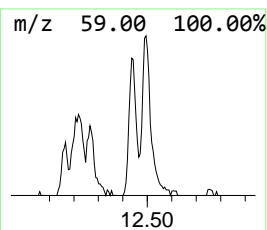
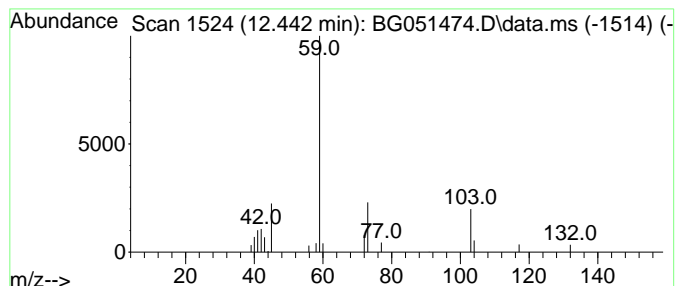
Quant Method : Z:\svoasrv\HPCHEM1\BNA_G\Methods\SFAM-EPA-BG120821.M
 Quant Title : SVOA CALIBRATION

TIC Library : C:\DATABASE\NIST20.L
 TIC Integration Parameters: LSCINT.P

 Peak Number 3 2-Propanol, 1-(2-methoxy-1-... Concentration Rank 10

R.T.	EstConc	Area	Relative to ISTD	R.T.
12.442	3.28 ng/ul	36360	Naphthalene-d8	11.008

Hit#	of 5	Tentative ID	MW	MolForm	CAS#	Qual
1		2-Propanol, 1-(2-methoxy-1-methy...	148	C7H16O3	020324-32-7	72
2		2-Propanol, 1-(2-ethoxypropoxy)-	162	C8H18O3	010143-32-5	72
3		2-Propanol, 1-(2-methoxy-1-methy...	148	C7H16O3	020324-32-7	72
4		1-Propanol, 2-(2-hydroxypropoxy)-	134	C6H14O3	000106-62-7	64
5		1-Propanol, 2-(2-hydroxypropoxy)-	134	C6H14O3	000106-62-7	64



Data Path : Z:\svoasrv\HPCHEM1\BNA_G\Data\BG120921\
 Data File : BG051474.D
 Acq On : 11 Dec 2021 3:52
 Operator : CG/JU
 Sample : M5009-02
 Misc :
 ALS Vial : 23 Sample Multiplier: 1

Instrument :
 BNA_G
 ClientSampleId :
 A0020

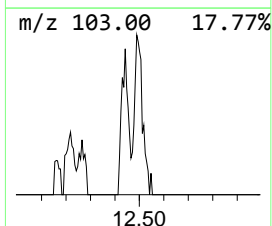
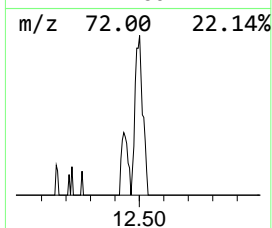
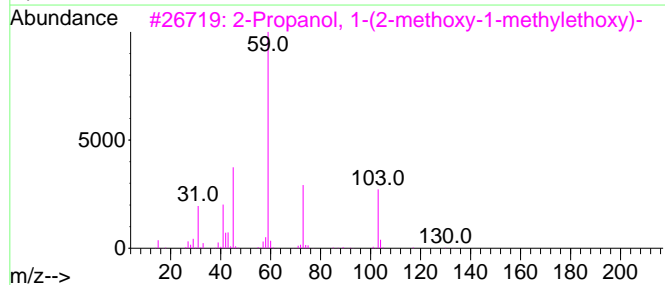
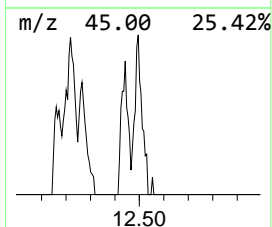
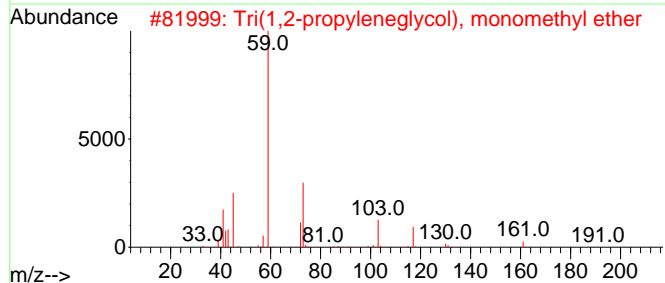
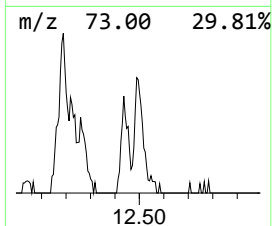
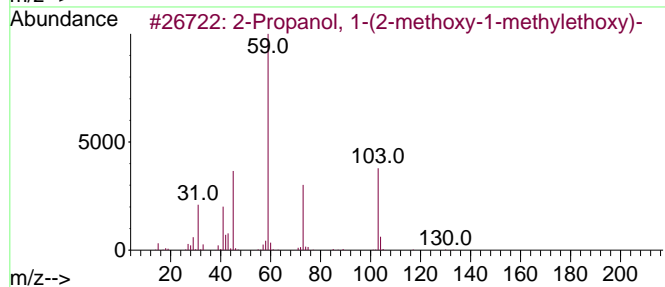
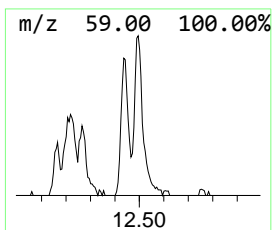
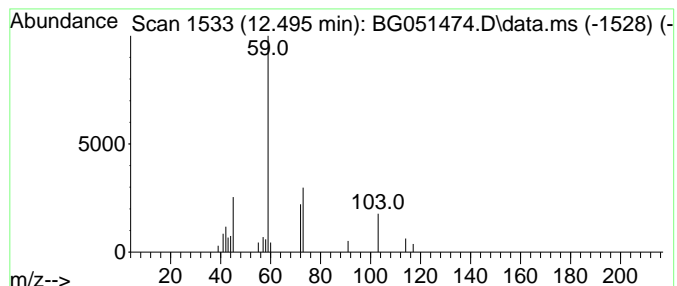
Quant Method : Z:\svoasrv\HPCHEM1\BNA_G\Methods\SFAM-EPA-BG120821.M
 Quant Title : SVOA CALIBRATION

TIC Library : C:\DATABASE\NIST20.L
 TIC Integration Parameters: LSCINT.P

 Peak Number 4 Tri(1,2-propyleneglycol), m... Concentration Rank 8

R.T.	EstConc	Area	Relative to ISTD	R.T.
12.495	3.80 ng/ul	42044	Naphthalene-d8	11.008

Hit#	of	5	Tentative ID	MW	MolForm	CAS#	Qual
1	2-Propanol, 1-(2-methoxy-1-methy...	148	C7H16O3	020324-32-7	64		
2	Tri(1,2-propyleneglycol), monome...	206	C10H22O4	1000262-26-6	64		
3	2-Propanol, 1-(2-methoxy-1-methy...	148	C7H16O3	020324-32-7	64		
4	Hexylene glycol	118	C6H14O2	000107-41-5	53		
5	1-Propanol, 2,2'-oxybis-	134	C6H14O3	000108-61-2	53		



Data Path : Z:\svoasrv\HPCHEM1\BNA_G\Data\BG120921\
 Data File : BG051474.D
 Acq On : 11 Dec 2021 3:52
 Operator : CG/JU
 Sample : M5009-02
 Misc :
 ALS Vial : 23 Sample Multiplier: 1

Instrument :
 BNA_G
 ClientSampleId :
 A0020

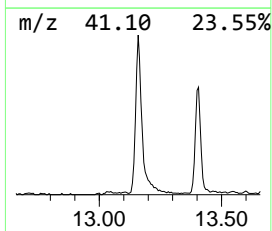
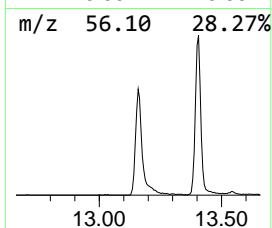
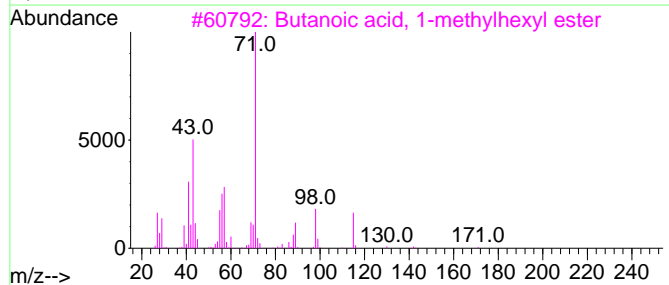
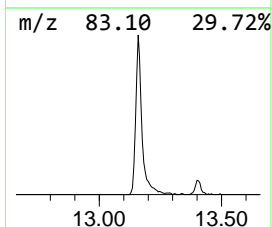
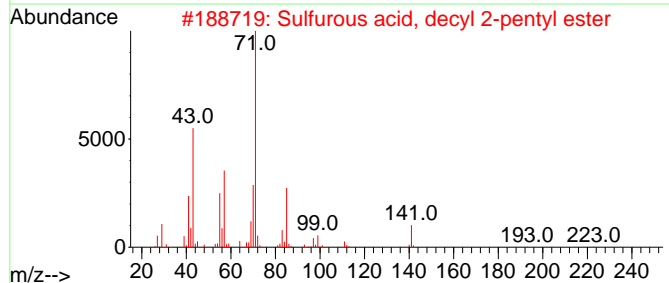
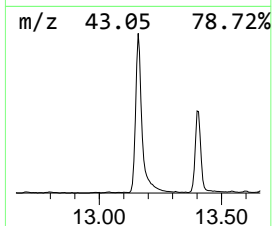
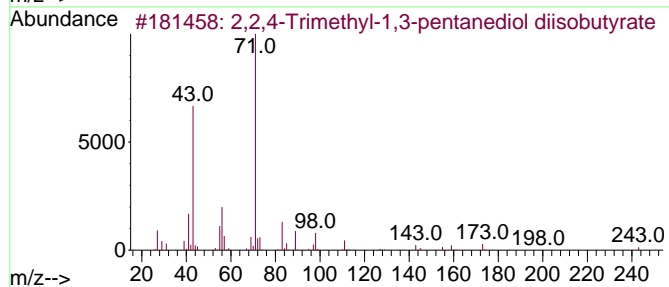
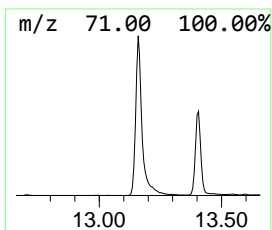
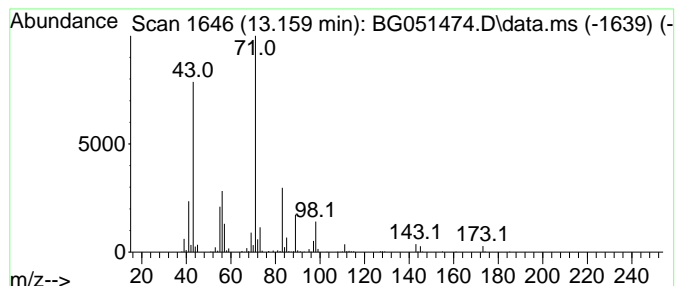
Quant Method : Z:\svoasrv\HPCHEM1\BNA_G\Methods\SFAM-EPA-BG120821.M
 Quant Title : SVOA CALIBRATION

TIC Library : C:\DATABASE\NIST20.L
 TIC Integration Parameters: LSCINT.P

 Peak Number 5 2,2,4-Trimethyl-1,3-pentane... Concentration Rank 1

R.T.	EstConc	Area	Relative to ISTD	R.T.
13.159	50.59 ng/ul	811959	Acenaphthene-d10	14.816

Hit#	of	5	Tentative ID	MW	MolForm	CAS#	Qual
1	2,2,4-Trimethyl-1,3-pentanediol ...	286	C16H30O4	006846-50-0	86		
2	Sulfurous acid, decyl 2-pentyl e...	292	C15H32O3S	1000309-15-9	43		
3	Butanoic acid, 1-methylhexyl ester	186	C11H22O2	039026-94-3	42		
4	Butanoic acid, 1-methylpropyl ester	144	C8H16O2	000819-97-6	42		
5	Butanoic acid, 1-methyloctyl ester	214	C13H26O2	069727-42-0	40		



Data Path : Z:\svoasrv\HPCHEM1\BNA_G\Data\BG120921\
 Data File : BG051474.D
 Acq On : 11 Dec 2021 3:52
 Operator : CG/JU
 Sample : M5009-02
 Misc :
 ALS Vial : 23 Sample Multiplier: 1

Instrument :
 BNA_G
 ClientSampleId :
 A0020

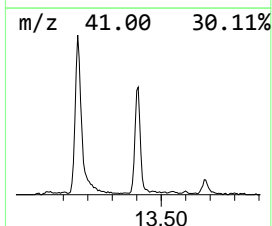
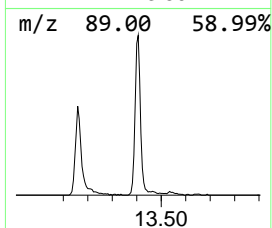
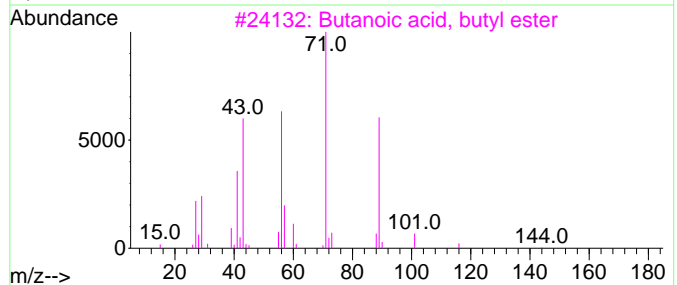
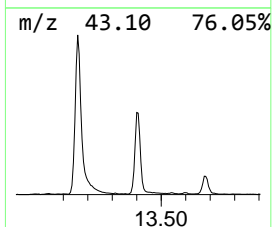
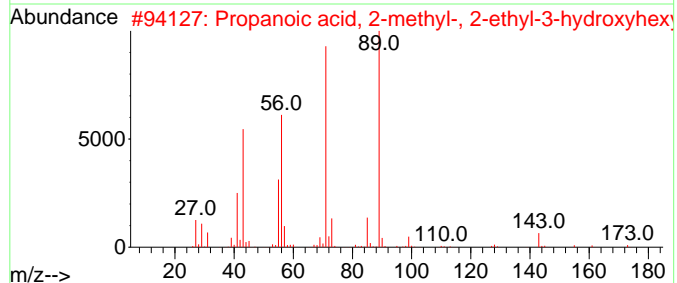
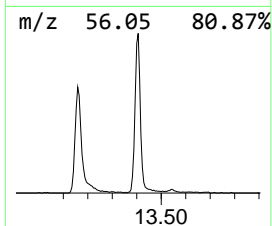
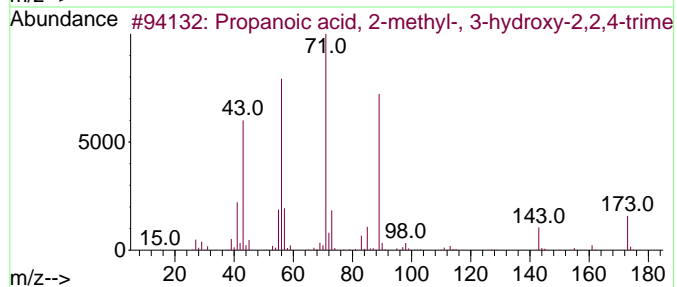
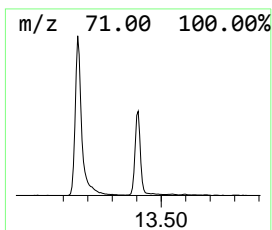
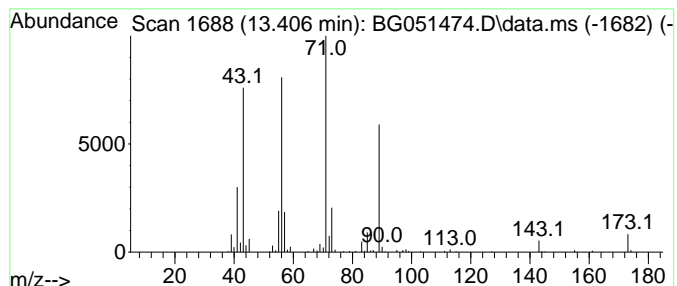
Quant Method : Z:\svoasrv\HPCHEM1\BNA_G\Methods\SFAM-EPA-BG120821.M
 Quant Title : SVOA CALIBRATION

TIC Library : C:\DATABASE\NIST20.L
 TIC Integration Parameters: LSCINT.P

 Peak Number 6 Propanoic acid, 2-methyl-, ... Concentration Rank 2

R.T.	EstConc	Area	Relative to ISTD	R.T.
13.406	26.36 ng/ul	423090	Acenaphthene-d10	14.816

Hit#	of 5	Tentative ID	MW	MolForm	CAS#	Qual
1		Propanoic acid, 2-methyl-, 3-hyd...	216	C12H24O3	000077-68-9	78
2		Propanoic acid, 2-methyl-, 2-eth...	216	C12H24O3	074367-31-0	78
3		Butanoic acid, butyl ester	144	C8H16O2	000109-21-7	72
4		Propanoic acid, 2-methyl-, butyl...	144	C8H16O2	000097-87-0	53
5		Butanoic acid, butyl ester	144	C8H16O2	000109-21-7	45



Data Path : Z:\svoasrv\HPCHEM1\BNA_G\Data\BG120921\
 Data File : BG051474.D
 Acq On : 11 Dec 2021 3:52
 Operator : CG/JU
 Sample : M5009-02
 Misc :
 ALS Vial : 23 Sample Multiplier: 1

Instrument :
 BNA_G
 ClientSampleId :
 A0020

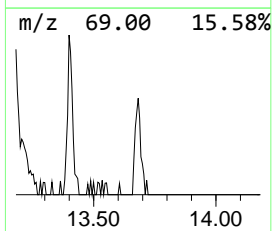
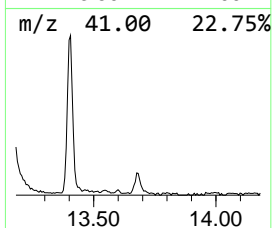
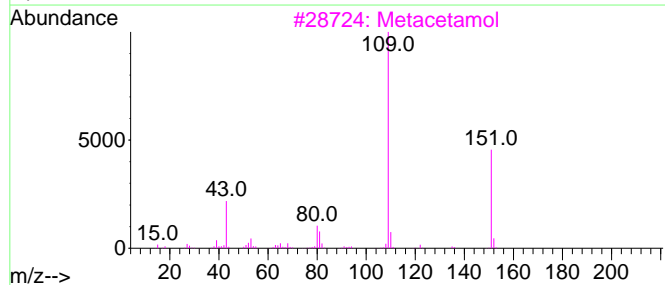
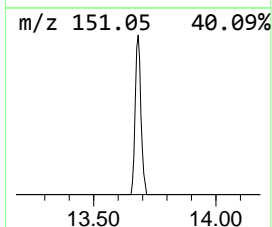
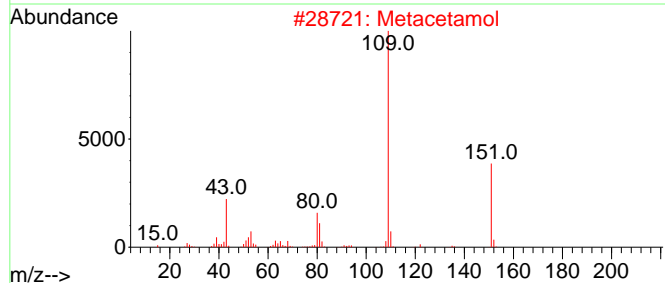
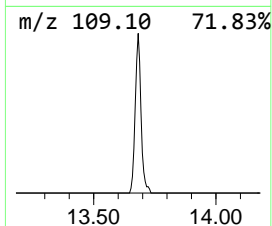
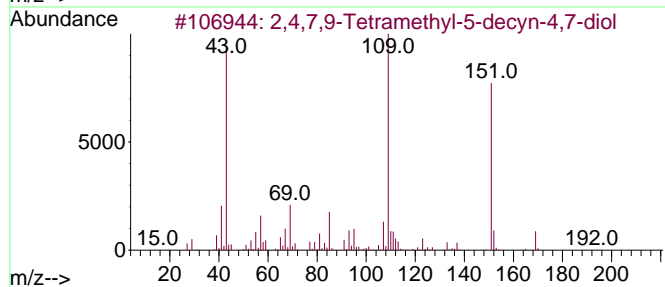
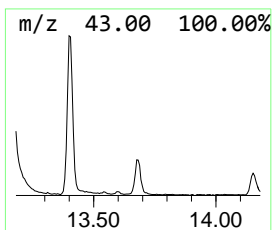
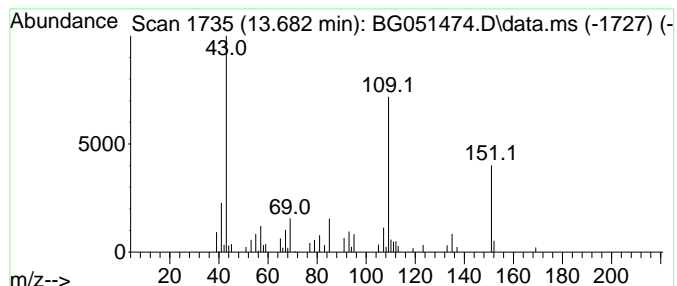
Quant Method : Z:\svoasrv\HPCHEM1\BNA_G\Methods\SFAM-EPA-BG120821.M
 Quant Title : SVOA CALIBRATION

TIC Library : C:\DATABASE\NIST20.L
 TIC Integration Parameters: LSCINT.P

 Peak Number 7 2,4,7,9-Tetramethyl-5-decyn... Concentration Rank 7

R.T.	EstConc	Area	Relative to ISTD	R.T.
13.682	4.56 ng/ul	73242	Acenaphthene-d10	14.816

Hit#	of 5	Tentative ID	MW	MolForm	CAS#	Qual
1		2,4,7,9-Tetramethyl-5-decyn-4,7-...	226	C14H26O2	000126-86-3	91
2		Metacetamol	151	C8H9NO2	000621-42-1	58
3		Metacetamol	151	C8H9NO2	000621-42-1	58
4		Metacetamol	151	C8H9NO2	000621-42-1	58
5		Pyridine, 3-butyl-, 1-oxide	151	C9H13NO	031396-33-5	53



Data Path : Z:\svoasrv\HPCHEM1\BNA_G\Data\BG120921\
 Data File : BG051474.D
 Acq On : 11 Dec 2021 3:52
 Operator : CG/JU
 Sample : M5009-02
 Misc :
 ALS Vial : 23 Sample Multiplier: 1

Instrument :
 BNA_G
 ClientSampleId :
 A0020

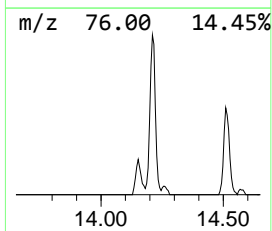
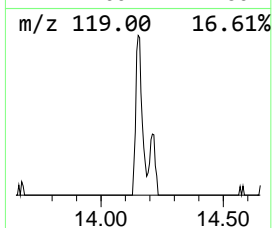
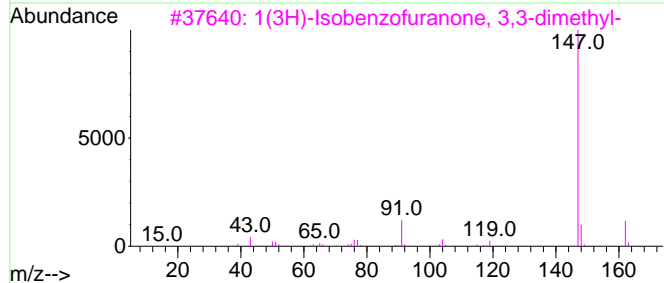
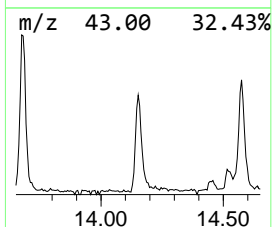
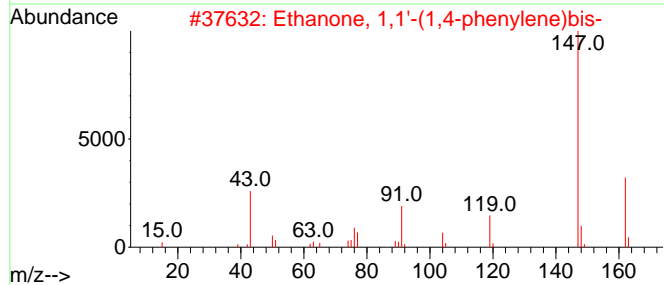
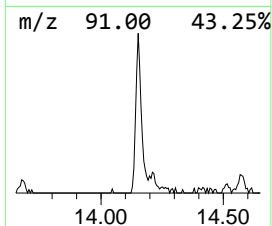
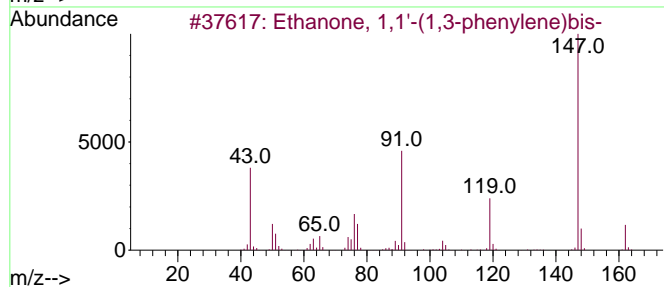
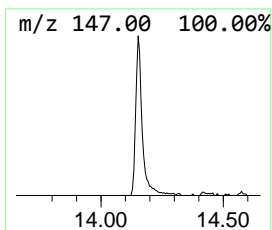
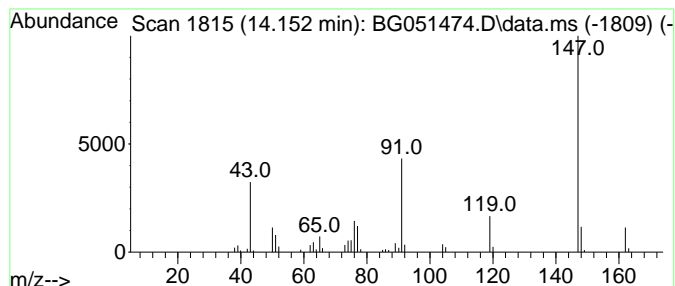
Quant Method : Z:\svoasrv\HPCHEM1\BNA_G\Methods\SFAM-EPA-BG120821.M
 Quant Title : SVOA CALIBRATION

TIC Library : C:\DATABASE\NIST20.L
 TIC Integration Parameters: LSCINT.P

 Peak Number 8 Ethanone, 1,1'-(1,3-phenyle... Concentration Rank 6

R.T.	EstConc	Area	Relative to ISTD	R.T.
14.152	5.88 ng/ul	94431	Acenaphthene-d10	14.816

Hit#	of 5	Tentative ID	MW	MolForm	CAS#	Qual
1		Ethanone, 1,1'-(1,3-phenylene)bis-	162	C10H10O2	006781-42-6	97
2		Ethanone, 1,1'-(1,4-phenylene)bis-	162	C10H10O2	001009-61-6	87
3		1(3H)-Isobenzofuranone, 3,3-dime...	162	C10H10O2	001689-09-4	87
4		Pyrido[3,2-d]pyrimidin-4-ol	147	C7H5N3O	037538-67-3	72
5		Ethanone, 1,1'-(1,4-phenylene)bis-	162	C10H10O2	001009-61-6	64



Data Path : Z:\svoasrv\HPCHEM1\BNA_G\Data\BG120921\
 Data File : BG051474.D
 Acq On : 11 Dec 2021 3:52
 Operator : CG/JU
 Sample : M5009-02
 Misc :
 ALS Vial : 23 Sample Multiplier: 1

Instrument :
 BNA_G
 ClientSampleId :
 A0020

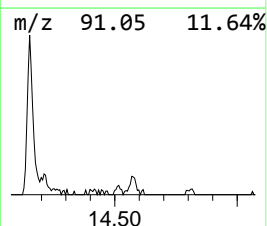
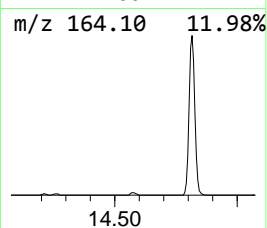
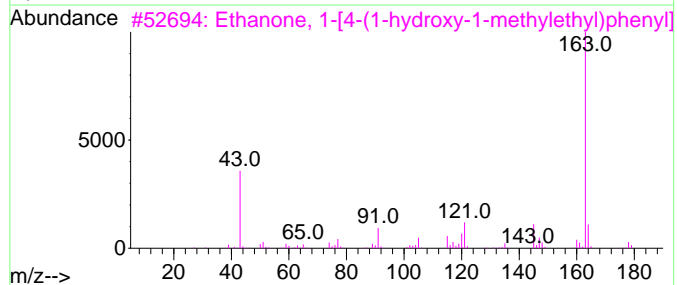
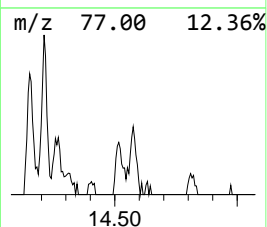
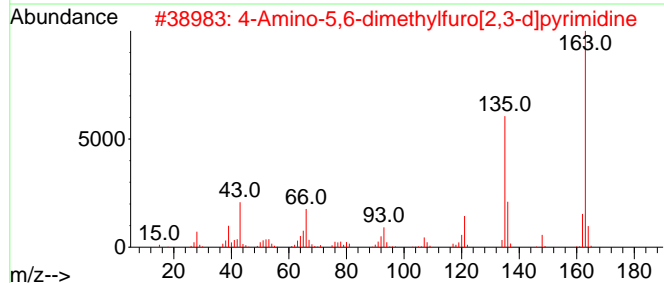
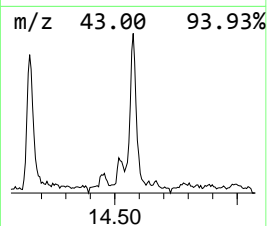
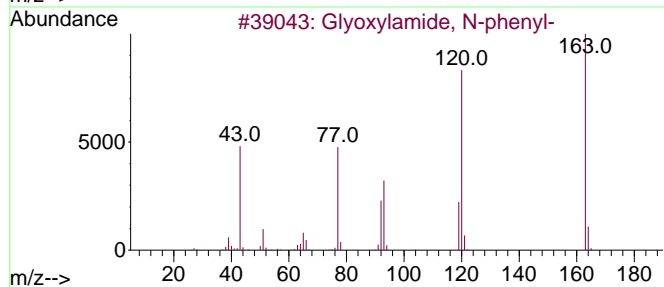
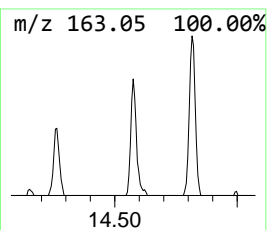
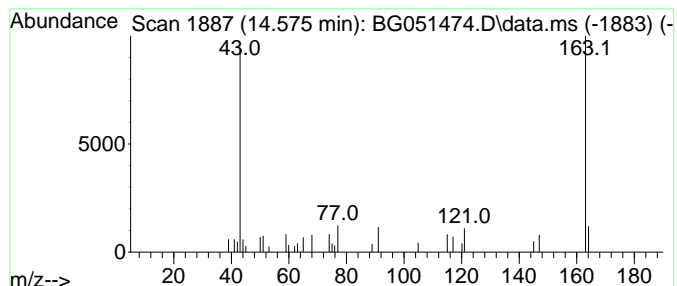
Quant Method : Z:\svoasrv\HPCHEM1\BNA_G\Methods\SFAM-EPA-BG120821.M
 Quant Title : SVOA CALIBRATION

TIC Library : C:\DATABASE\NIST20.L
 TIC Integration Parameters: LSCINT.P

 Peak Number 9 Glyoxylamide, N-phenyl- Concentration Rank 12

R.T.	EstConc	Area	Relative to ISTD	R.T.
14.575	2.64 ng/ul	42341	Acenaphthene-d10	14.816

Hit#	of	5	Tentative ID	MW	MolForm	CAS#	Qual
1			Glyoxylamide, N-phenyl-	163	C9H9NO2	032331-52-5	53
2			4-Amino-5,6-dimethylfuro[2,3-d]p...	163	C8H9N3O	005117-94-2	42
3			Ethanone, 1-[4-(1-hydroxy-1-meth...	178	C11H14O2	054549-72-3	39
4			4-Aminocinnamic acid	163	C9H9NO2	002393-18-2	38
5			Butan-2-one, 4-(2-hydroxyphenyl)...	286	C17H18O2S	296891-93-5	38



Data Path : Z:\svoasrv\HPCHEM1\BNA_G\Data\BG120921\
 Data File : BG051474.D
 Acq On : 11 Dec 2021 3:52
 Operator : CG/JU
 Sample : M5009-02
 Misc :
 ALS Vial : 23 Sample Multiplier: 1

Instrument :
 BNA_G
 ClientSampleId :
 A0020

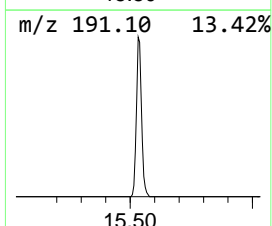
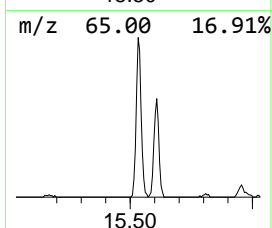
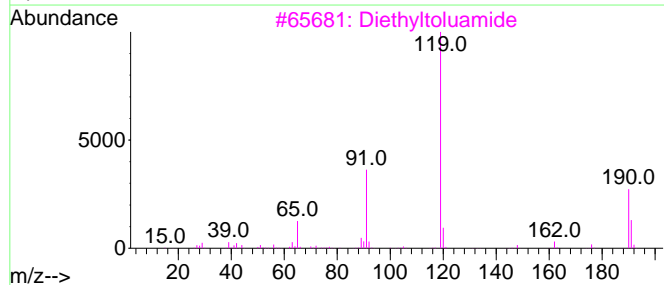
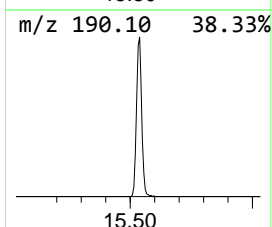
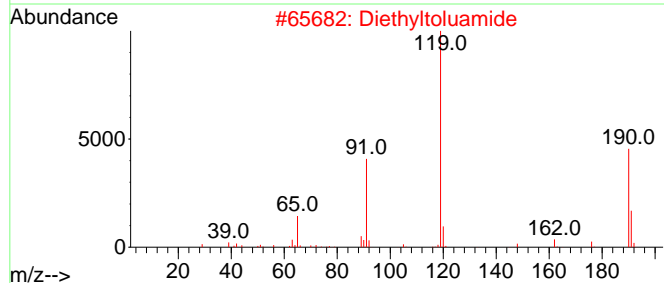
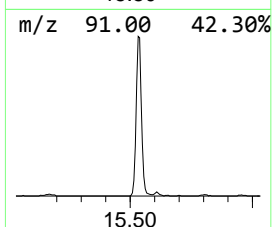
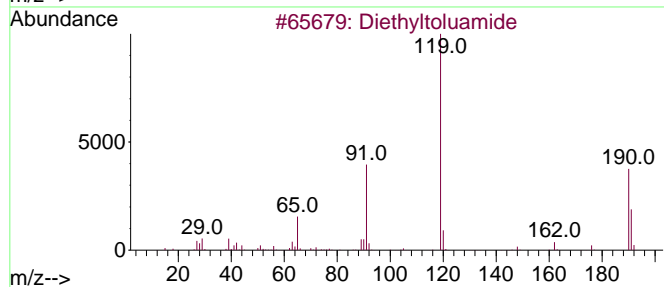
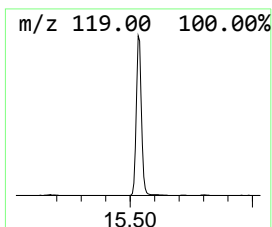
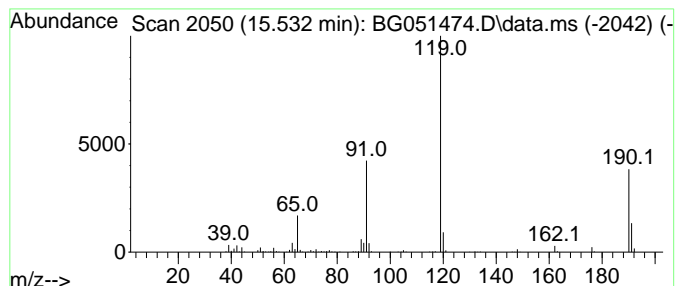
Quant Method : Z:\svoasrv\HPCHEM1\BNA_G\Methods\SFAM-EPA-BG120821.M
 Quant Title : SVOA CALIBRATION

TIC Library : C:\DATABASE\NIST20.L
 TIC Integration Parameters: LSCINT.P

 Peak Number 10 Diethyltoluamide Concentration Rank 3

R.T.	EstConc	Area	Relative to ISTD	R.T.
15.533	26.18 ng/ul	420125	Acenaphthene-d10	14.816

Hit#	of 5	Tentative ID	MW	MolForm	CAS#	Qual
1		Diethyltoluamide	191	C12H17NO	000134-62-3	97
2		Diethyltoluamide	191	C12H17NO	000134-62-3	97
3		Diethyltoluamide	191	C12H17NO	000134-62-3	97
4		Diethyltoluamide	191	C12H17NO	000134-62-3	96
5		Benzamide, 3-methyl-N-methyl-N-p...	191	C12H17NO	1000421-46-2	81



Data Path : Z:\svoasrv\HPCHEM1\BNA_G\Data\BG120921\
 Data File : BG051474.D
 Acq On : 11 Dec 2021 3:52
 Operator : CG/JU
 Sample : M5009-02
 Misc :
 ALS Vial : 23 Sample Multiplier: 1

Instrument :
 BNA_G
 ClientSampleId :
 A0020

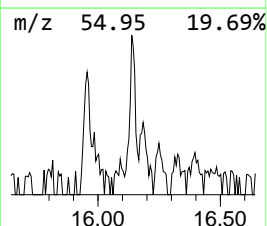
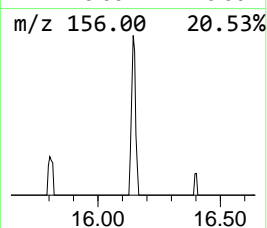
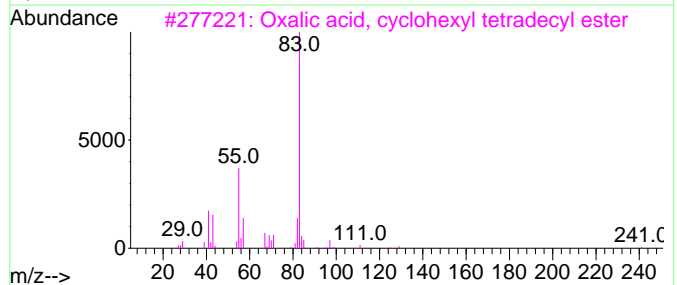
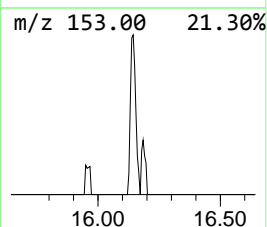
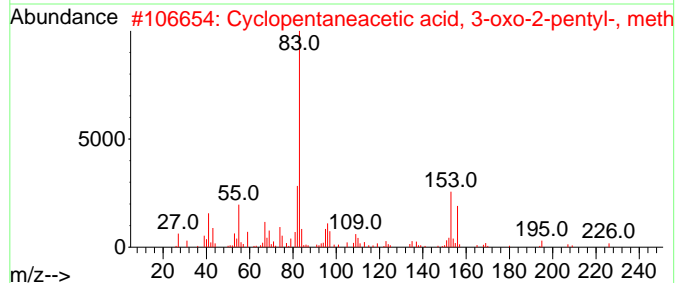
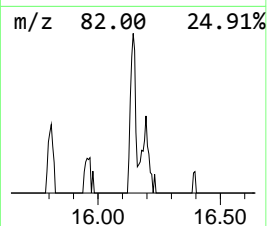
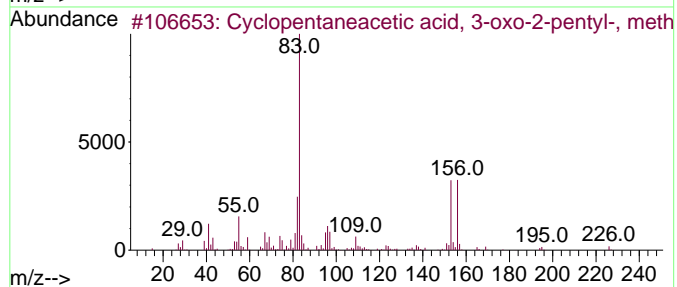
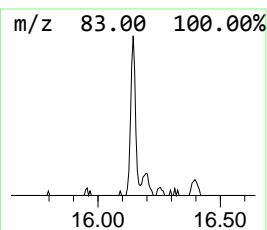
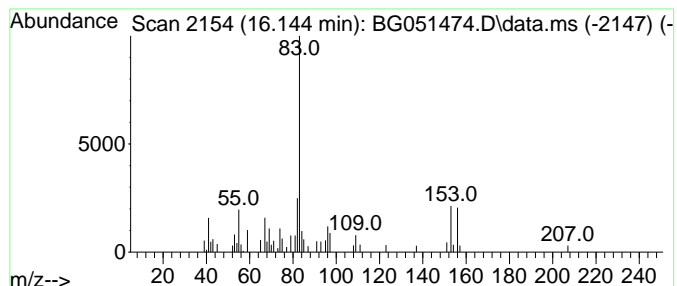
Quant Method : Z:\svoasrv\HPCHEM1\BNA_G\Methods\SFAM-EPA-BG120821.M
 Quant Title : SVOA CALIBRATION

TIC Library : C:\DATABASE\NIST20.L
 TIC Integration Parameters: LSCINT.P

 Peak Number 11 Cyclopentaneacetic acid, 3-... Concentration Rank 13

R.T.	EstConc	Area	Relative to ISTD	R.T.
16.144	2.43 ng/ul	39053	Acenaphthene-d10	14.816

Hit#	of	5	Tentative ID	MW	MolForm	CAS#	Qual
1			Cyclopentaneacetic acid, 3-oxo-2...	226	C13H22O3	024851-98-7	83
2			Cyclopentaneacetic acid, 3-oxo-2...	226	C13H22O3	024851-98-7	78
3			Oxalic acid, cyclohexyl tetradec...	368	C22H40O4	1000309-31-5	43
4			Cyclohexane, decyl-	224	C16H32	001795-16-0	38
5			Cyclopentane, 1-ethyl-1-methyl-	112	C8H16	016747-50-5	38



Data Path : Z:\svoasrv\HPCHEM1\BNA_G\Data\BG120921\
 Data File : BG051474.D
 Acq On : 11 Dec 2021 3:52
 Operator : CG/JU
 Sample : M5009-02
 Misc :
 ALS Vial : 23 Sample Multiplier: 1

Instrument :
 BNA_G
 ClientSampleId :
 A0020

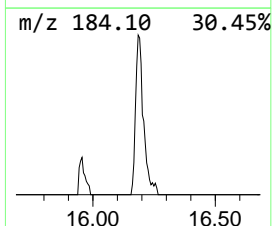
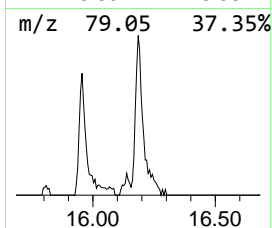
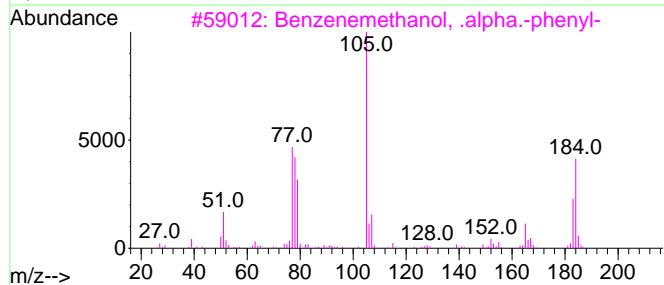
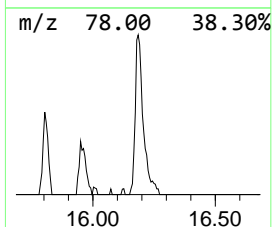
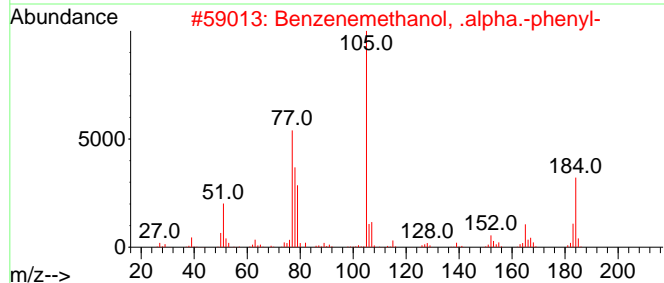
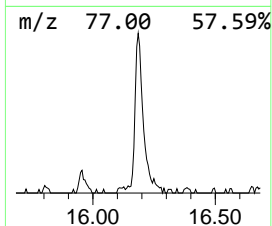
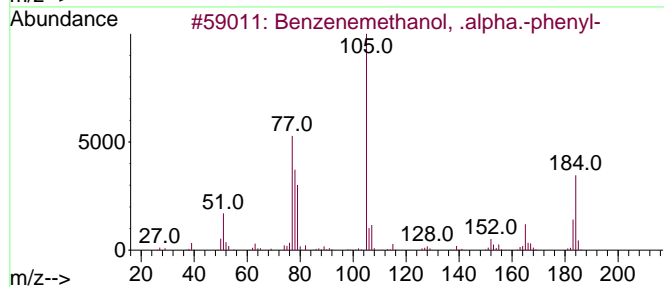
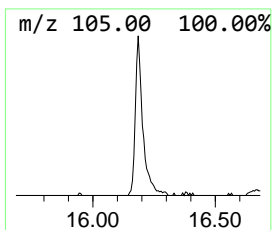
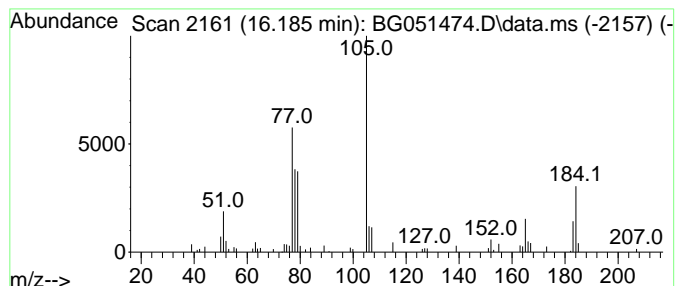
Quant Method : Z:\svoasrv\HPCHEM1\BNA_G\Methods\SFAM-EPA-BG120821.M
 Quant Title : SVOA CALIBRATION

TIC Library : C:\DATABASE\NIST20.L
 TIC Integration Parameters: LSCINT.P

 Peak Number 12 Benzenemethanol, .alpha.-ph... Concentration Rank 5

R.T.	EstConc	Area	Relative to ISTD	R.T.
16.185	7.20 ng/ul	115610	Acenaphthene-d10	14.816

Hit#	of 5	Tentative ID	MW	MolForm	CAS#	Qual
1		Benzenemethanol, .alpha.-phenyl-	184	C13H12O	000091-01-0	97
2		Benzenemethanol, .alpha.-phenyl-	184	C13H12O	000091-01-0	96
3		Benzenemethanol, .alpha.-phenyl-	184	C13H12O	000091-01-0	93
4		Benzenemethanol, .alpha.-phenyl-	184	C13H12O	000091-01-0	93
5		Benzenemethanol, .alpha.-phenyl-	184	C13H12O	000091-01-0	90



Data Path : Z:\svoasrv\HPCHEM1\BNA_G\Data\BG120921\
 Data File : BG051474.D
 Acq On : 11 Dec 2021 3:52
 Operator : CG/JU
 Sample : M5009-02
 Misc :
 ALS Vial : 23 Sample Multiplier: 1

Instrument :
 BNA_G
 ClientSampleId :
 A0020

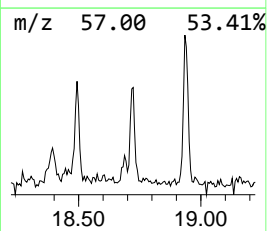
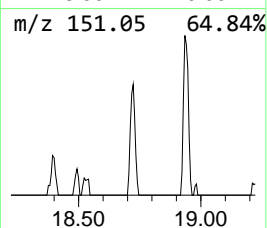
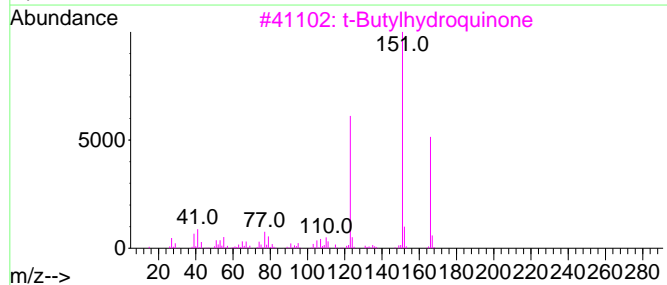
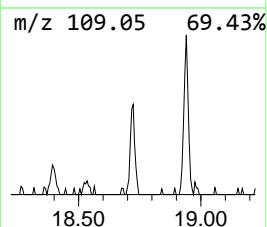
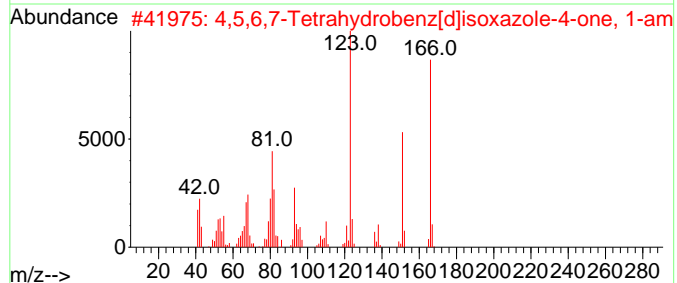
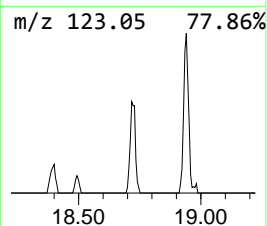
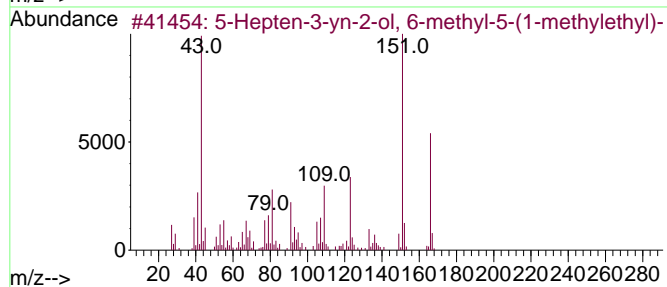
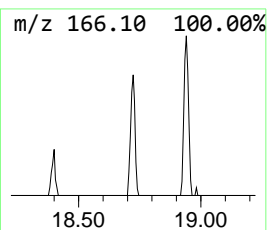
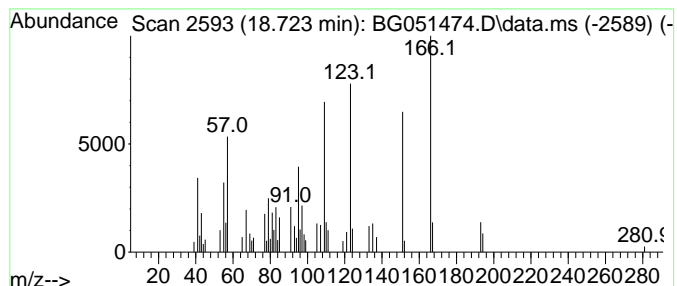
Quant Method : Z:\svoasrv\HPCHEM1\BNA_G\Methods\SFAM-EPA-BG120821.M
 Quant Title : SVOA CALIBRATION

TIC Library : C:\DATABASE\NIST20.L
 TIC Integration Parameters: LSCINT.P

 Peak Number 13 5-Hepten-3-yn-2-ol, 6-methy... Concentration Rank 14

R.T.	EstConc	Area	Relative to ISTD	R.T.
18.723	2.21 ng/ul	43432	Phenanthrene-d10	17.565

Hit#	of	5	Tentative ID	MW	MolForm	CAS#	Qual
1			5-Hepten-3-yn-2-ol, 6-methyl-5-(...	166	C11H18O	063922-41-8	64
2			4,5,6,7-Tetrahydrobenz[d]isoxazo...	166	C8H10N2O2	1000131-45-3	60
3			t-Butylhydroquinone	166	C10H14O2	001948-33-0	60
4			Durohydroquinone	166	C10H14O2	000527-18-4	53
5			l-Alanine, N-(3-fluorobenzoyl)-,...	363	C21H30FN03	1010314-21-5	43



Data Path : Z:\svoasrv\HPCHEM1\BNA_G\Data\BG120921\
 Data File : BG051474.D
 Acq On : 11 Dec 2021 3:52
 Operator : CG/JU
 Sample : M5009-02
 Misc :
 ALS Vial : 23 Sample Multiplier: 1

Instrument :
 BNA_G
 ClientSampleId :
 A0020

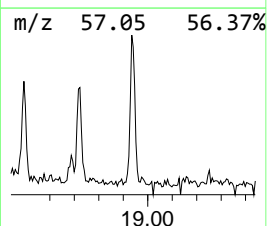
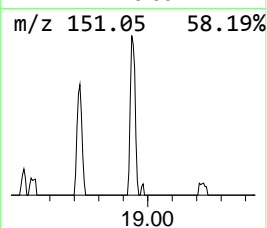
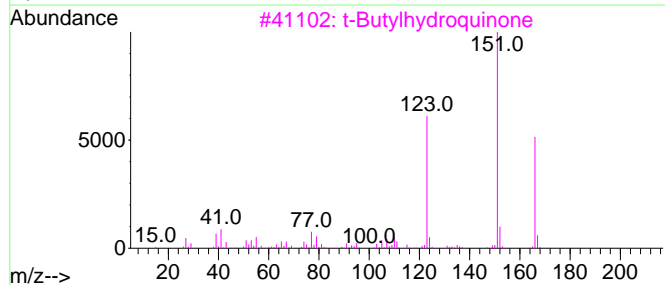
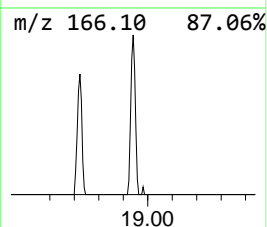
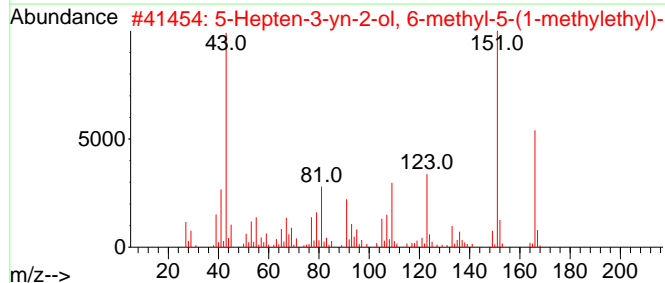
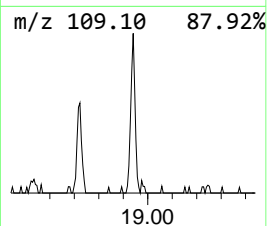
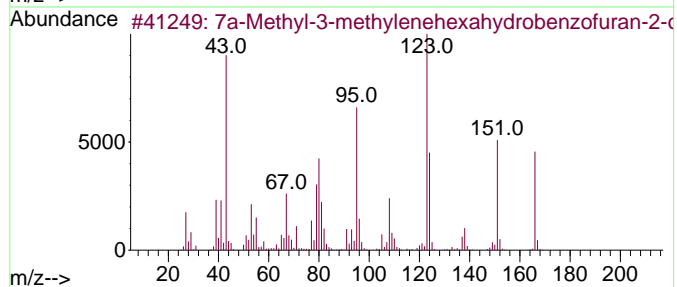
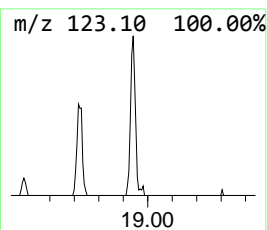
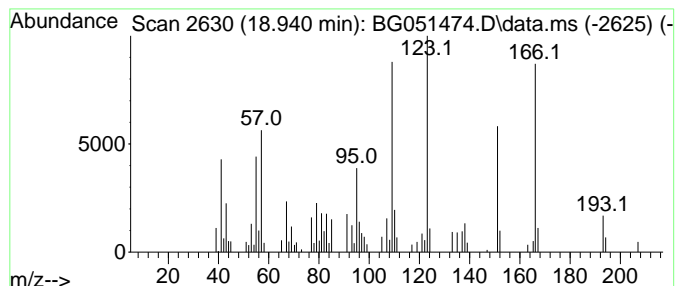
Quant Method : Z:\svoasrv\HPCHEM1\BNA_G\Methods\SFAM-EPA-BG120821.M
 Quant Title : SVOA CALIBRATION

TIC Library : C:\DATABASE\NIST20.L
 TIC Integration Parameters: LSCINT.P

 Peak Number 14 7a-Methyl-3-methylenehexahy... Concentration Rank 11

R.T.	EstConc	Area	Relative to ISTD	R.T.
18.940	3.27 ng/ul	64244	Phenanthrene-d10	17.565

Hit#	of 5	Tentative ID	MW	MolForm	CAS#	Qual
1		7a-Methyl-3-methylenehexahydrobe...	166	C10H14O2	067498-53-7	70
2		5-Hepten-3-yn-2-ol, 6-methyl-5-(...	166	C11H18O	063922-41-8	58
3		t-Butylhydroquinone	166	C10H14O2	001948-33-0	53
4		l-Alanine, N-(2-fluorobenzoyl)-,...	323	C18H26FN03	1000314-04-5	46
5		4,5,6,7-Tetrahydrobenz[d]isoxazo...	166	C8H10N2O2	1000131-45-3	46



Data Path : Z:\svoasrv\HPCHEM1\BNA_G\Data\BG120921\
 Data File : BG051474.D
 Acq On : 11 Dec 2021 3:52
 Operator : CG/JU
 Sample : M5009-02
 Misc :
 ALS Vial : 23 Sample Multiplier: 1

Instrument :
 BNA_G
 ClientSampleId :
 A0020

Quant Method : Z:\svoasrv\HPCHEM1\BNA_G\Methods\SFAM-EPA-BG120821.M
 Quant Title : SVOA CALIBRATION

TIC Library : C:\DATABASE\NIST0.L
 TIC Integration Parameters: LSCINT.P

TIC Top Hit name	RT	EstConc	Units	Response	--Internal Standard--			
					#	RT	Resp	Conc
1,3-Pentenediol...	10.291	9.5	ng/ul	104753	2	11.008	221570	20.0
unknown-01	10.779	3.6	ng/ul	40052	2	11.008	221570	20.0
2-Propanol, 1-(...	12.442	3.3	ng/ul	36360	2	11.008	221570	20.0
Tri(1,2-propyle...	12.495	3.8	ng/ul	42044	2	11.008	221570	20.0
2,2,4-Trimethyl...	13.159	50.6	ng/ul	811959	3	14.816	320990	20.0
Propanoic acid,...	13.406	26.4	ng/ul	423090	3	14.816	320990	20.0
2,4,7,9-Tetrame...	13.682	4.6	ng/ul	73242	3	14.816	320990	20.0
Ethanone, 1,1'-...	14.152	5.9	ng/ul	94431	3	14.816	320990	20.0
Glyoxylamide, N...	14.575	2.6	ng/ul	42341	3	14.816	320990	20.0
Diethyltoluamide	15.533	26.2	ng/ul	420125	3	14.816	320990	20.0
Cyclopentaneace...	16.144	2.4	ng/ul	39053	3	14.816	320990	20.0
Benzenemethanol...	16.185	7.2	ng/ul	115610	3	14.816	320990	20.0
5-Hepten-3-yn-2...	18.723	2.2	ng/ul	43432	4	17.565	393416	20.0
7a-Methyl-3-met...	18.940	3.3	ng/ul	64244	4	17.565	393416	20.0