

Data Path : Z:\svoasrv\HPCHEM1\BNA_G\Data\BG121522\
 Data File : BG055978.D
 Acq On : 15 Dec 2022 15:44
 Operator : CG/JU
 Sample : N6057-05
 Misc :
 ALS Vial : 6 Sample Multiplier: 1

Instrument :
 BNA_G
 ClientSampleId :
 1521

Quant Time: Dec 16 04:03:28 2022
 Quant Method : Z:\svoasrv\HPCHEM1\BNA_G\Methods\8270-BG121322.M
 Quant Title : ASP BNA STANDARDS FOR 5 POINT CALIBRATION
 QLast Update : Wed Dec 14 02:24:06 2022
 Response via : Initial Calibration

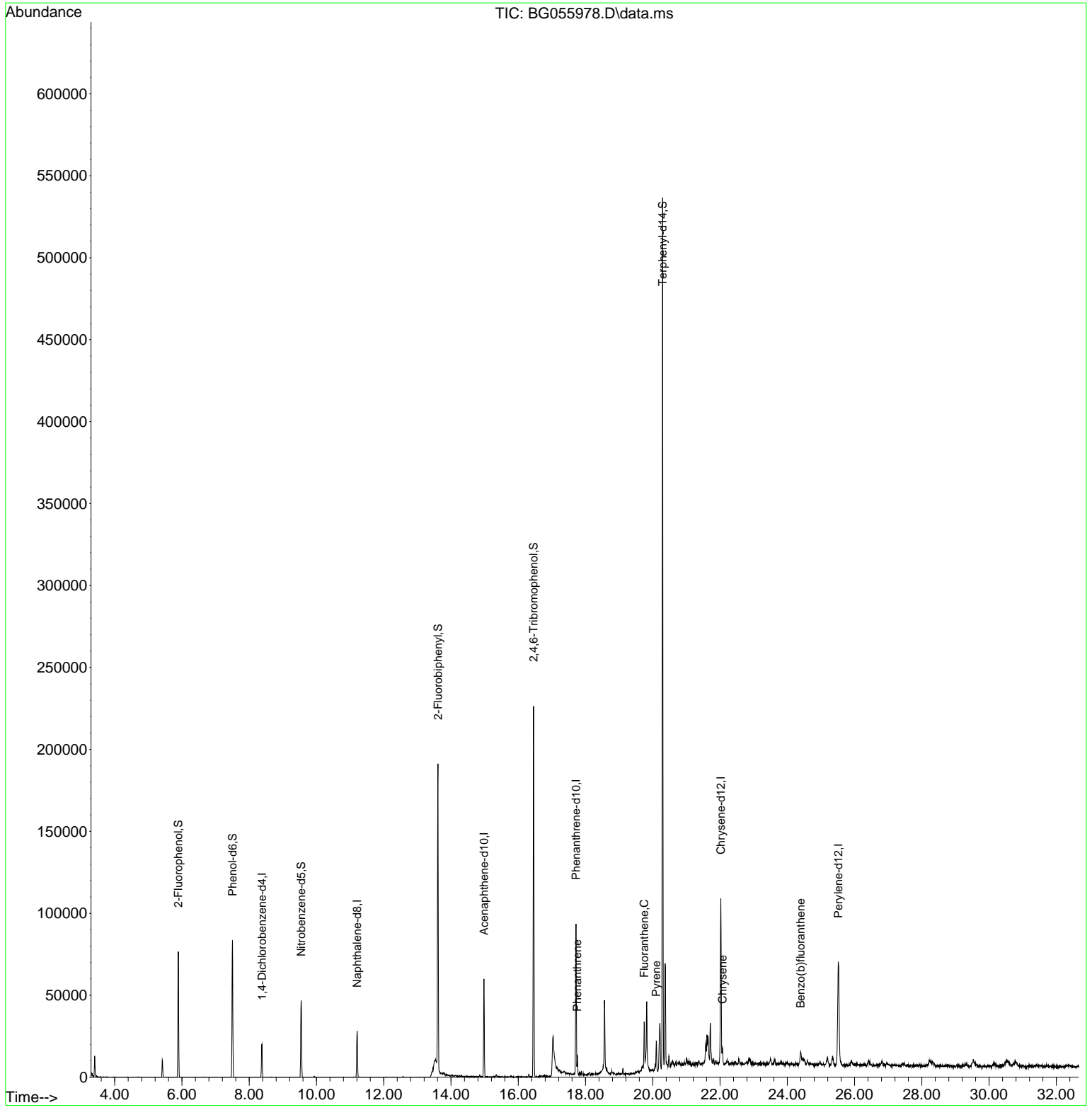
Compound	R.T.	QIon	Response	Conc Units	Dev(Min)	
Internal Standards						
1) 1,4-Dichlorobenzene-d4	8.376	152	6831	20.000 ng	0.00	
21) Naphthalene-d8	11.208	136	26099	20.000 ng	# 0.00	
39) Acenaphthene-d10	14.980	164	23658	20.000 ng	0.00	
64) Phenanthrene-d10	17.718	188	67714	20.000 ng	# 0.00	
76) Chrysene-d12	22.024	240	71930	20.000 ng	0.00	
86) Perylene-d12	25.514	264	87457	20.000 ng	0.00	
System Monitoring Compounds						
5) 2-Fluorophenol	5.890	112	31408	107.828 ng	0.00	
7) Phenol-d6	7.500	99	40148	107.169 ng	0.00	
23) Nitrobenzene-d5	9.545	82	25505	68.292 ng	0.00	
42) 2,4,6-Tribromophenol	16.454	330	60723	106.445 ng	0.00	
45) 2-Fluorobiphenyl	13.611	172	102659	60.858 ng	0.00	
79) Terphenyl-d14	20.291	244	266483	65.478 ng	0.00	
Target Compounds						Qvalue
71) Phenanthrene	17.753	178	9606	2.707 ng	#	94
75) Fluoranthene	19.745	202	19978	4.020 ng		98
78) Pyrene	20.103	202	14595	3.353 ng		97
83) Chrysene	22.071	228	9595	2.023 ng	#	91
88) Benzo(b)fluoranthene	24.392	252	12842	2.269 ng	#	98

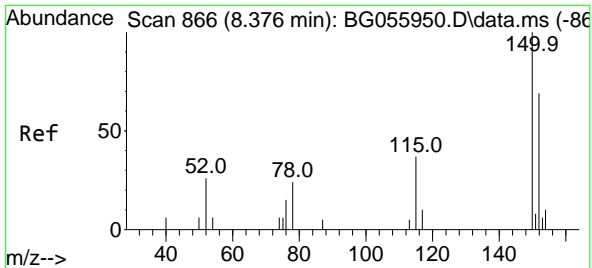
(#) = qualifier out of range (m) = manual integration (+) = signals summed

Data Path : Z:\svoasrv\HPCHEM1\BNA_G\Data\BG121522\
 Data File : BG055978.D
 Acq On : 15 Dec 2022 15:44
 Operator : CG/JU
 Sample : N6057-05
 Misc :
 ALS Vial : 6 Sample Multiplier: 1

Instrument :
 BNA_G
ClientSampleId :
 1521

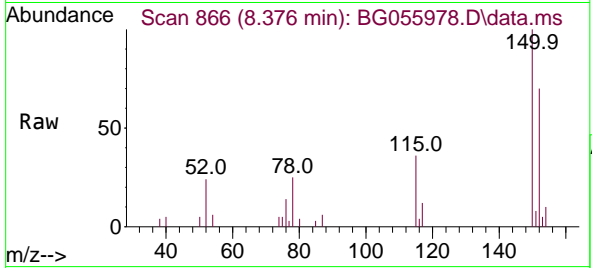
Quant Time: Dec 16 04:03:28 2022
 Quant Method : Z:\svoasrv\HPCHEM1\BNA_G\Methods\8270-BG121322.M
 Quant Title : ASP BNA STANDARDS FOR 5 POINT CALIBRATION
 QLast Update : Wed Dec 14 02:24:06 2022
 Response via : Initial Calibration



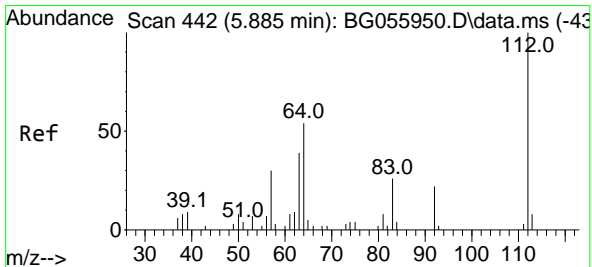
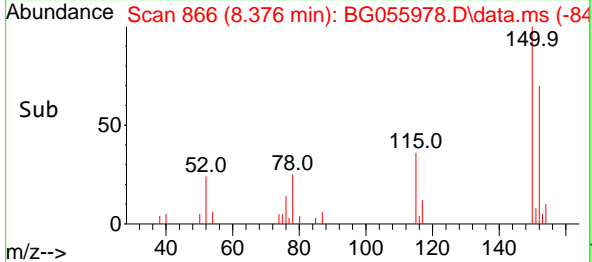
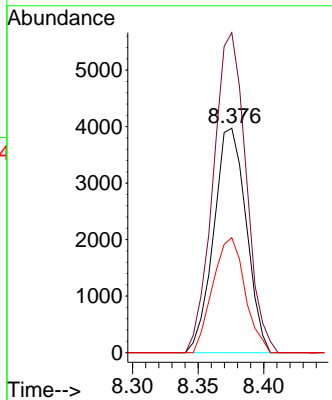


#1
 1,4-Dichlorobenzene-d4
 Concen: 20.000 ng
 RT: 8.376 min Scan# 80
 Delta R.T. -0.000 min
 Lab File: BG055978.D
 Acq: 15 Dec 2022 15:44

Instrument :
 BNA_G
 ClientSampleId :
 1521

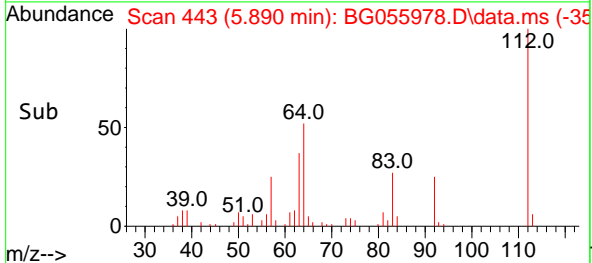
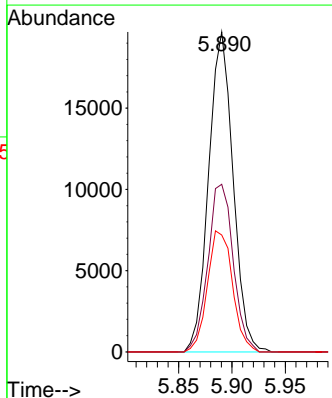
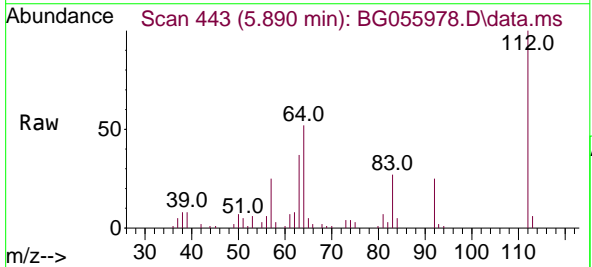


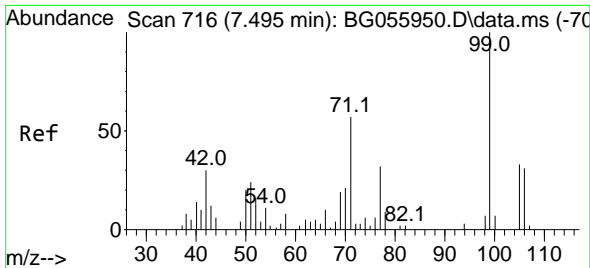
Tgt Ion:152 Resp: 6831
 Ion Ratio Lower Upper
 152 100
 150 142.6 115.7 173.5
 115 51.2 43.0 64.4



#5
 2-Fluorophenol
 Concen: 107.828 ng
 RT: 5.890 min Scan# 443
 Delta R.T. 0.005 min
 Lab File: BG055978.D
 Acq: 15 Dec 2022 15:44

Tgt Ion:112 Resp: 31408
 Ion Ratio Lower Upper
 112 100
 64 52.4 43.0 64.4
 63 36.5 31.4 47.2



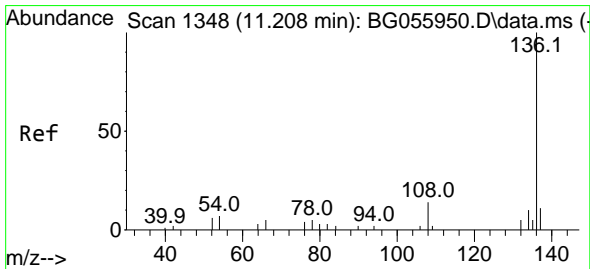
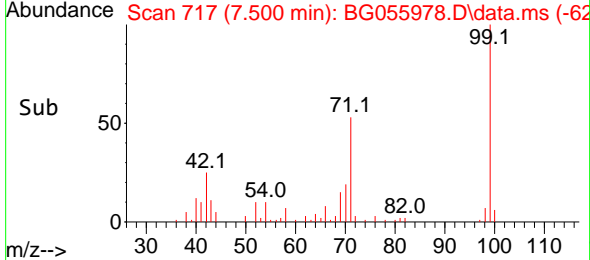
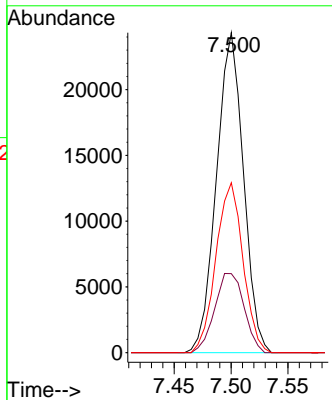
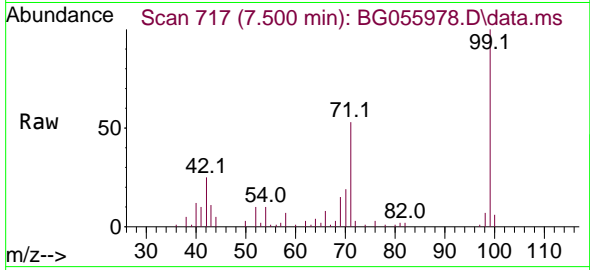


#7
 Phenol-d6
 Concen: 107.169 ng
 RT: 7.500 min Scan# 71
 Delta R.T. 0.005 min
 Lab File: BG055978.D
 Acq: 15 Dec 2022 15:44

Instrument :
 BNA_G
 ClientSampleId :
 1521

Tgt Ion: 99 Resp: 40148

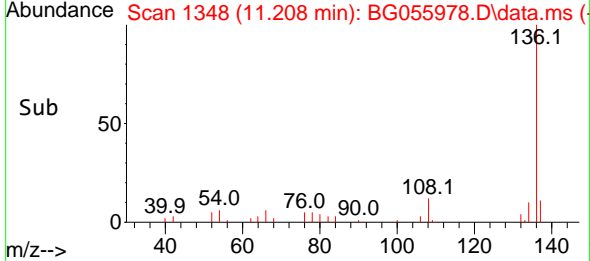
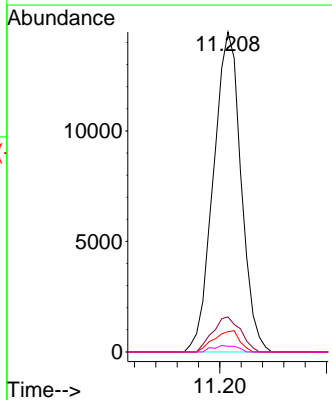
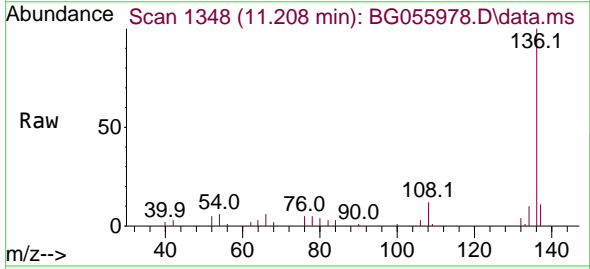
Ion	Ratio	Lower	Upper
99	100		
42	24.7	24.3	36.5
71	53.1	45.6	68.4

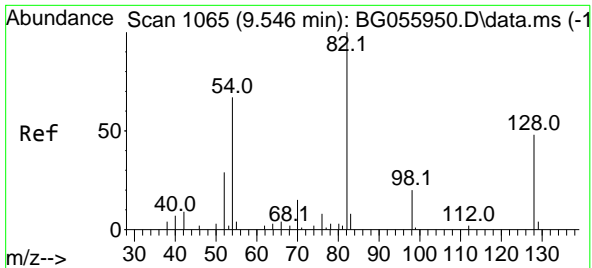


#21
 Naphthalene-d8
 Concen: 20.000 ng
 RT: 11.208 min Scan# 1348
 Delta R.T. -0.001 min
 Lab File: BG055978.D
 Acq: 15 Dec 2022 15:44

Tgt Ion:136 Resp: 26099

Ion	Ratio	Lower	Upper
136	100		
137	10.9	9.2	13.8
54	6.3	5.6	8.4
68	1.7	0.0	0.0

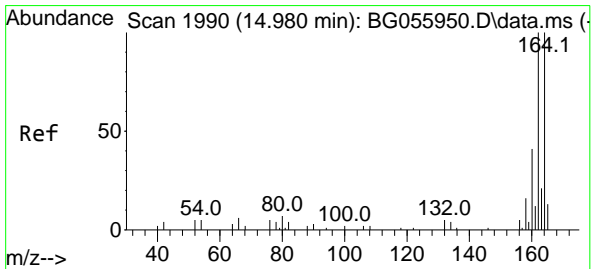
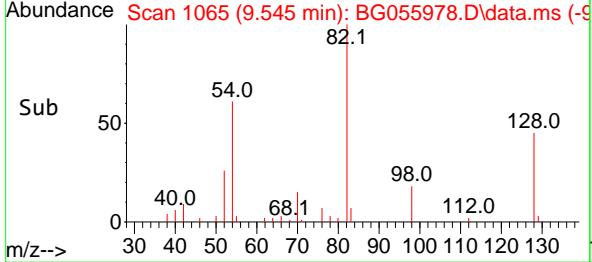
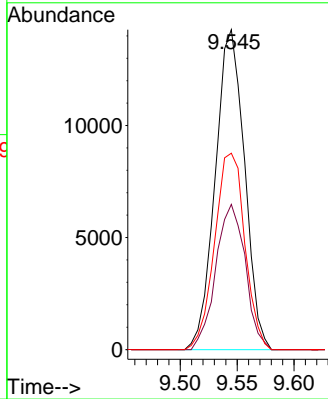
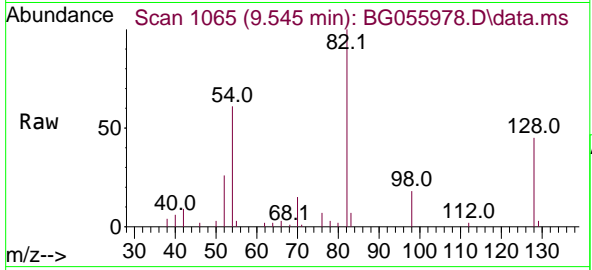




#23
 Nitrobenzene-d5
 Concen: 68.292 ng
 RT: 9.545 min Scan# 1065
 Delta R.T. -0.001 min
 Lab File: BG055978.D
 Acq: 15 Dec 2022 15:44

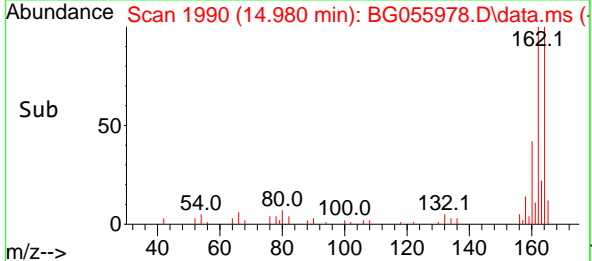
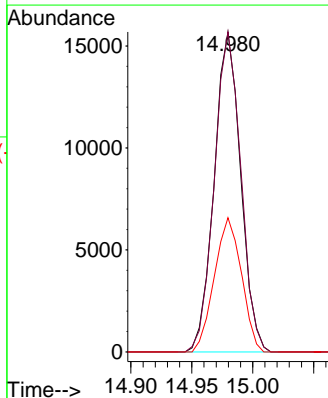
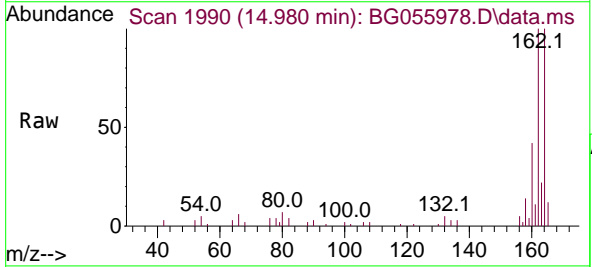
Instrument :
 BNA_G
 ClientSampleId :
 1521

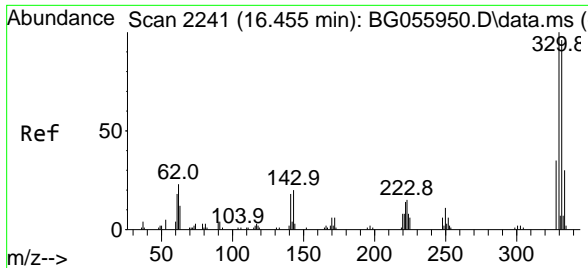
Tgt Ion	Resp	Lower	Upper
82	100		
128	45.4	38.4	57.6
54	61.4	53.3	79.9



#39
 Acenaphthene-d10
 Concen: 20.000 ng
 RT: 14.980 min Scan# 1990
 Delta R.T. -0.001 min
 Lab File: BG055978.D
 Acq: 15 Dec 2022 15:44

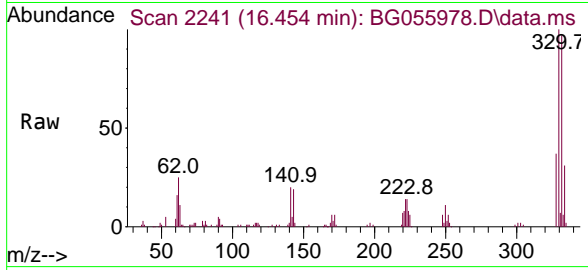
Tgt Ion	Resp	Lower	Upper
164	100		
162	100.1	79.8	119.8
160	42.0	33.0	49.4



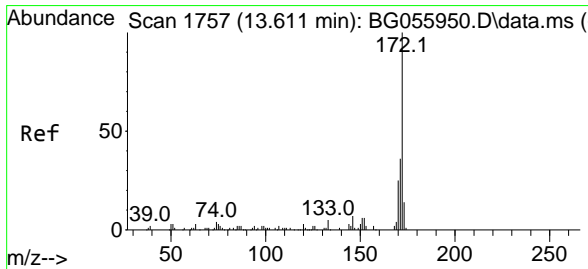
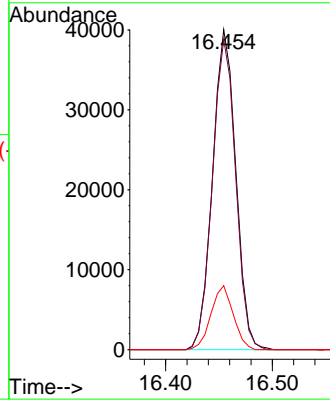
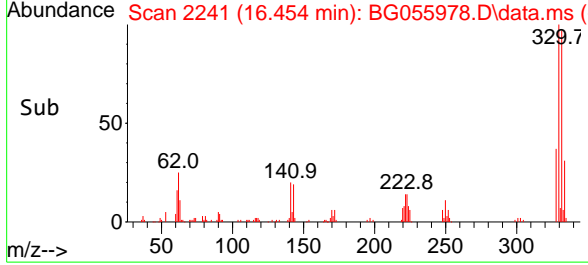


#42
 2,4,6-Tribromophenol
 Concen: 106.445 ng
 RT: 16.454 min Scan# 21
 Delta R.T. -0.001 min
 Lab File: BG055978.D
 Acq: 15 Dec 2022 15:44

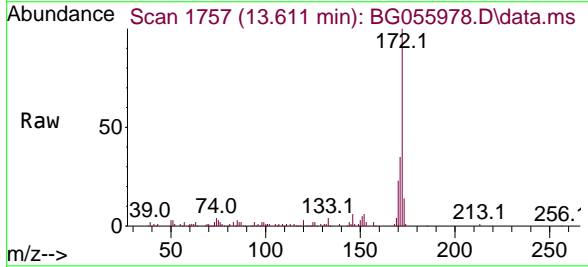
Instrument :
 BNA_G
 ClientSampleId :
 1521



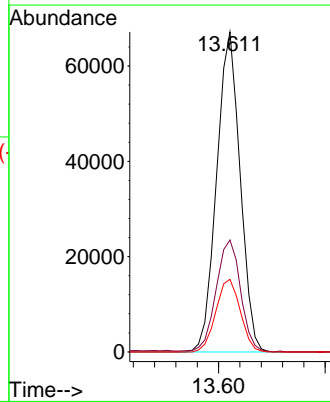
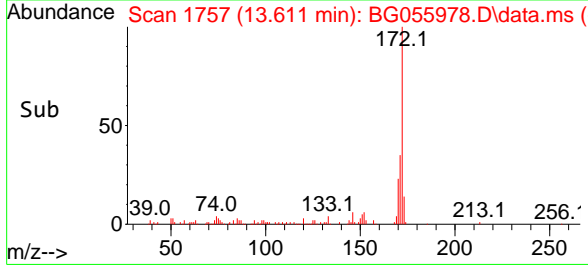
Tgt Ion:330 Resp: 60723
 Ion Ratio Lower Upper
 330 100
 332 96.8 76.6 114.8
 141 19.1 15.0 22.4

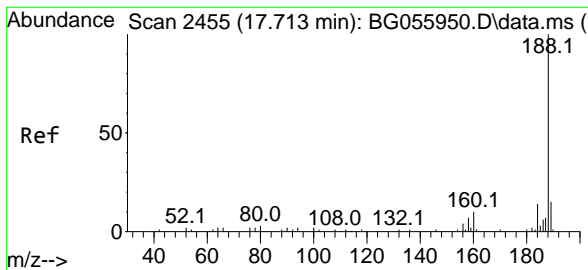


#45
 2-Fluorobiphenyl
 Concen: 60.858 ng
 RT: 13.611 min Scan# 1757
 Delta R.T. -0.001 min
 Lab File: BG055978.D
 Acq: 15 Dec 2022 15:44



Tgt Ion:172 Resp: 102659
 Ion Ratio Lower Upper
 172 100
 171 35.0 28.6 42.8
 170 22.7 19.9 29.9

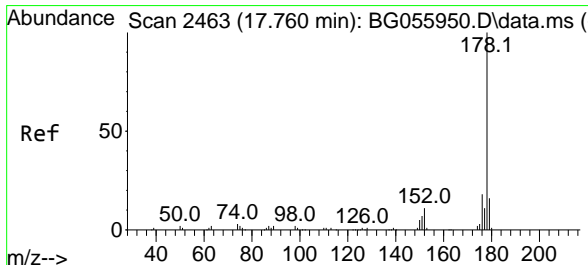
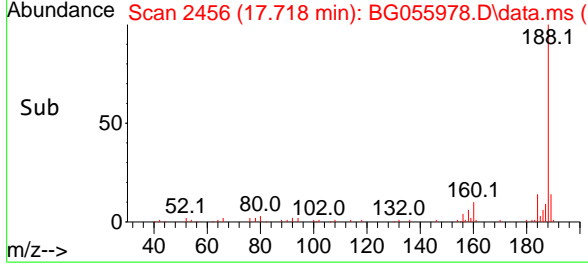
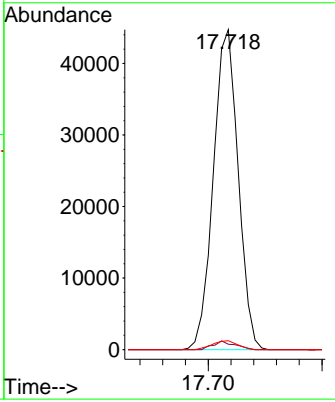
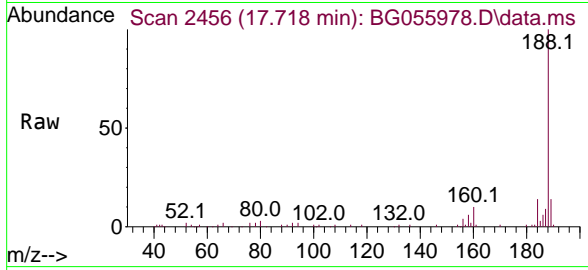




#64
 Phenanthrene-d10
 Concen: 20.000 ng
 RT: 17.718 min Scan# 2455
 Delta R.T. 0.005 min
 Lab File: BG055978.D
 Acq: 15 Dec 2022 15:44

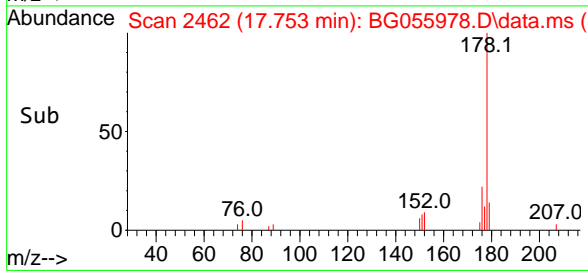
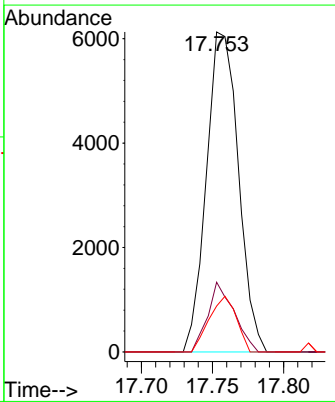
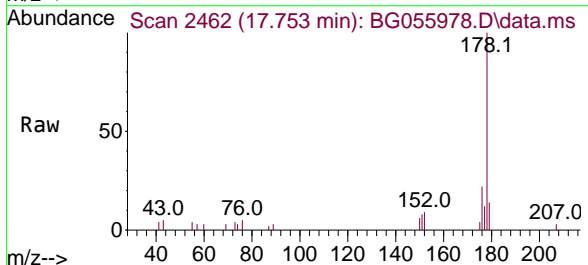
Instrument : BNA_G
 ClientSampleId : 1521

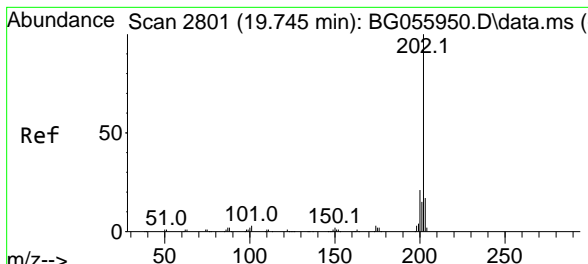
Tgt Ion	Resp	Lower	Upper
188	100		
94	1.7	1.8	2.8#
80	2.8	2.4	3.6



#71
 Phenanthrene
 Concen: 2.707 ng
 RT: 17.753 min Scan# 2462
 Delta R.T. -0.007 min
 Lab File: BG055978.D
 Acq: 15 Dec 2022 15:44

Tgt Ion	Resp	Lower	Upper
178	100		
176	21.8	14.4	21.6#
179	14.3	12.7	19.1

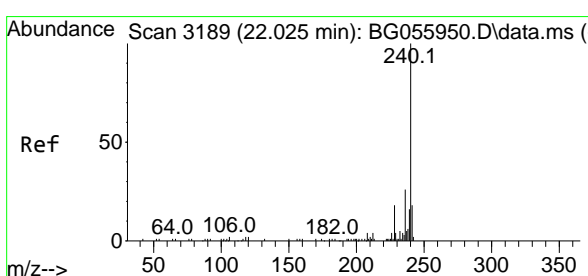
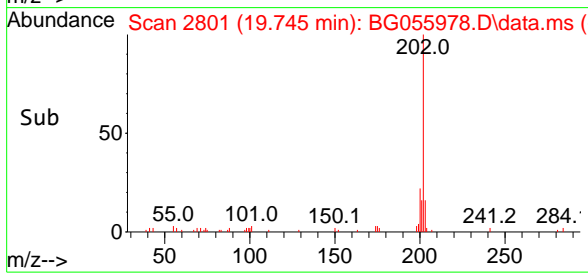
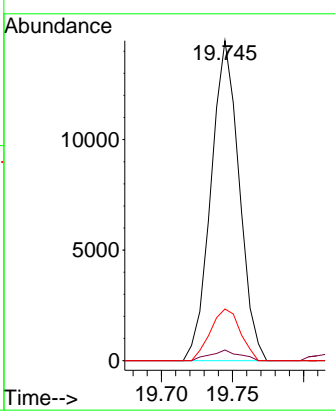
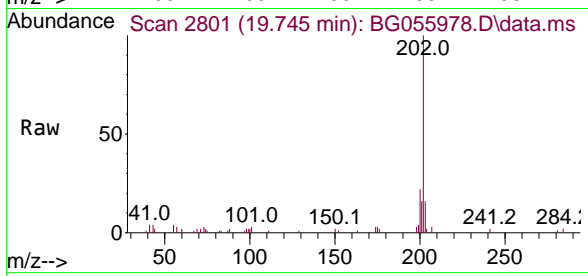




#75
 Fluoranthene
 Concen: 4.020 ng
 RT: 19.745 min Scan# 2801
 Delta R.T. -0.001 min
 Lab File: BG055978.D
 Acq: 15 Dec 2022 15:44

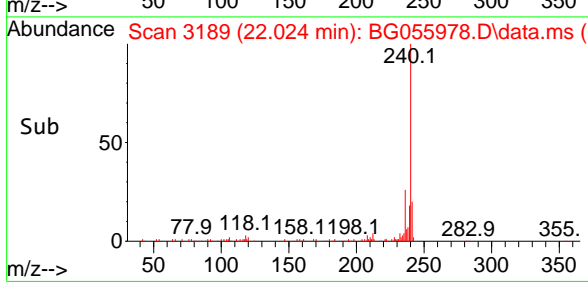
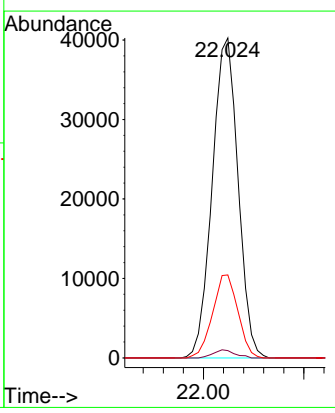
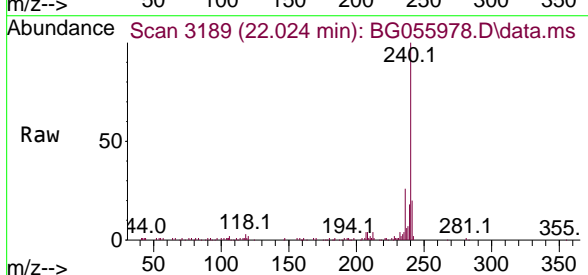
Instrument : BNA_G
 ClientSampleId : 1521

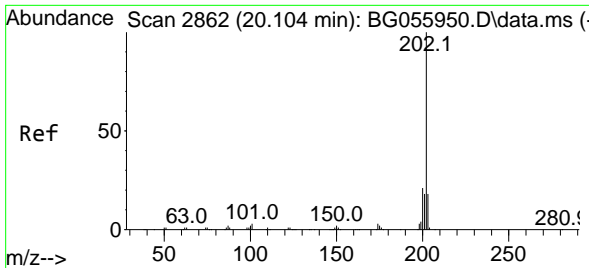
Tgt Ion	Resp	Lower	Upper
202	100		
101	3.3	0.0	22.6
203	16.2	0.0	37.1



#76
 Chrysene-d12
 Concen: 20.000 ng
 RT: 22.024 min Scan# 3189
 Delta R.T. -0.001 min
 Lab File: BG055978.D
 Acq: 15 Dec 2022 15:44

Tgt Ion	Resp	Lower	Upper
240	100		
120	2.3	1.7	2.5
236	25.9	21.1	31.7

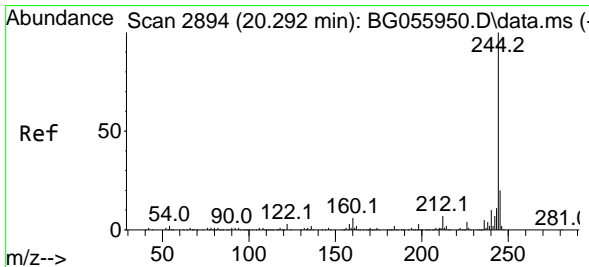
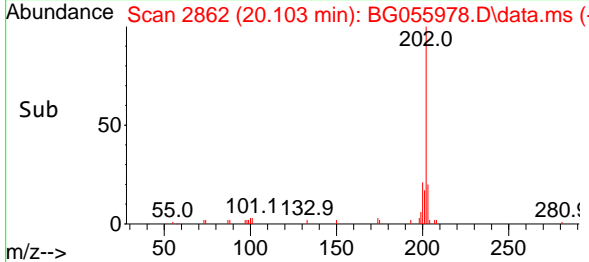
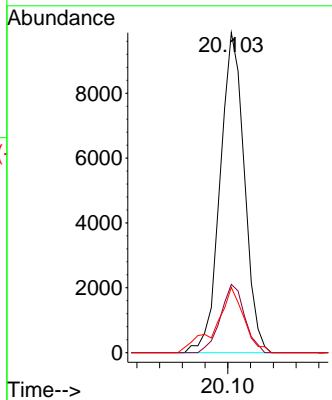
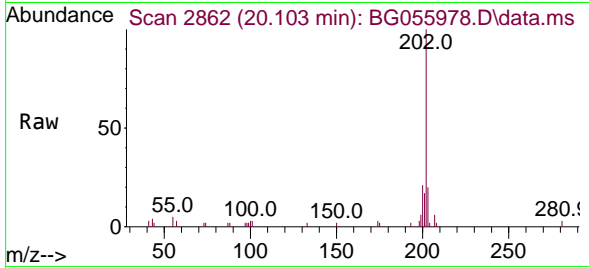




#78
 Pyrene
 Concen: 3.353 ng
 RT: 20.103 min Scan# 2862
 Delta R.T. -0.001 min
 Lab File: BG055978.D
 Acq: 15 Dec 2022 15:44

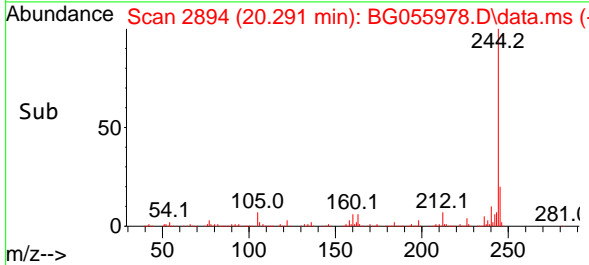
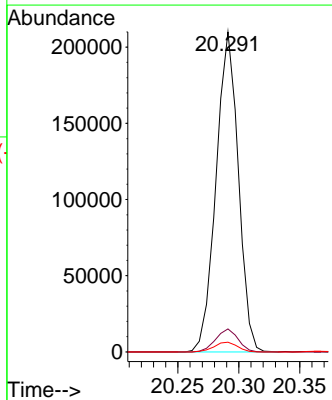
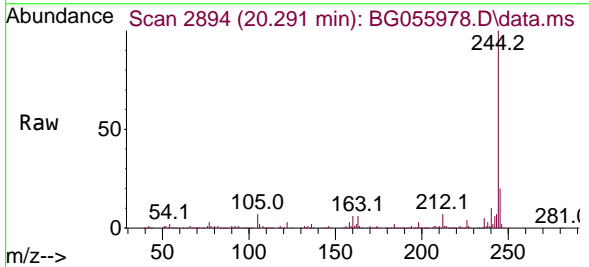
Instrument : BNA_G
 ClientSampleId : 1521

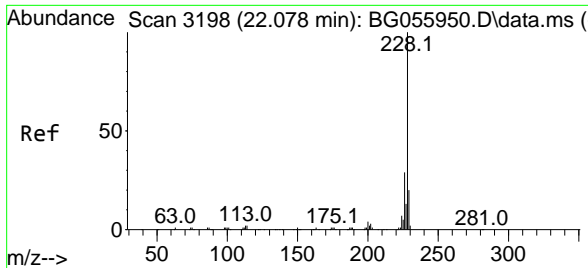
Tgt Ion	Resp	Lower	Upper
202	14595		
200	100	21.3	25.1
203	100	16.7	21.8



#79
 Terphenyl-d14
 Concen: 65.478 ng
 RT: 20.291 min Scan# 2894
 Delta R.T. -0.001 min
 Lab File: BG055978.D
 Acq: 15 Dec 2022 15:44

Tgt Ion	Resp	Lower	Upper
244	266483		
212	100	7.2	8.6
122	100	3.0	3.7

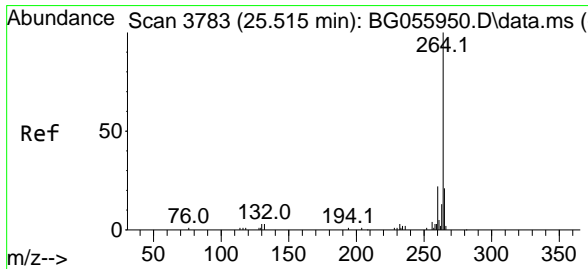
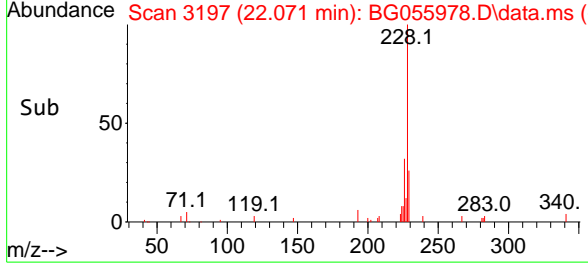
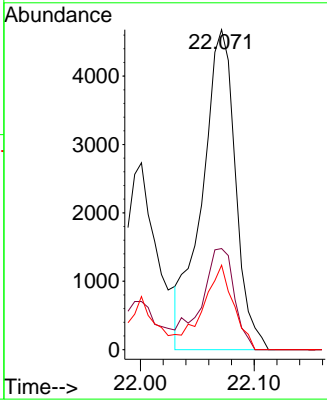
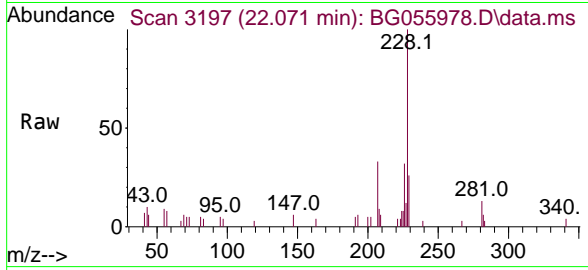




#83
 Chrysene
 Concen: 2.023 ng
 RT: 22.071 min Scan# 3197
 Delta R.T. -0.007 min
 Lab File: BG055978.D
 Acq: 15 Dec 2022 15:44

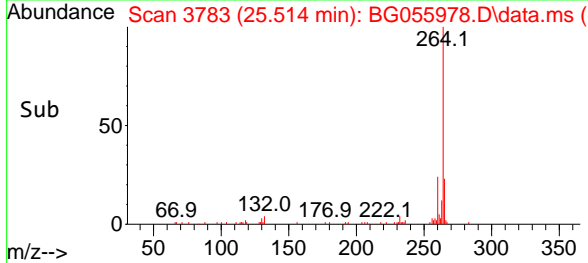
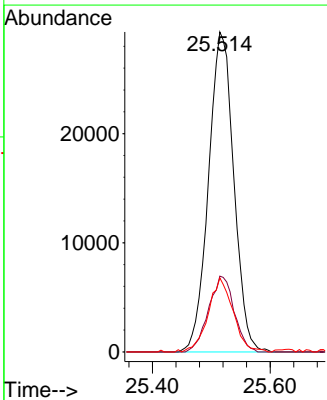
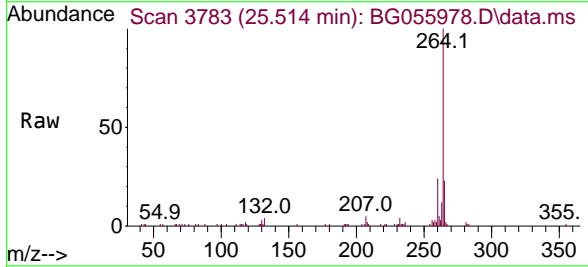
Instrument : BNA_G
 ClientSampleId : 1521

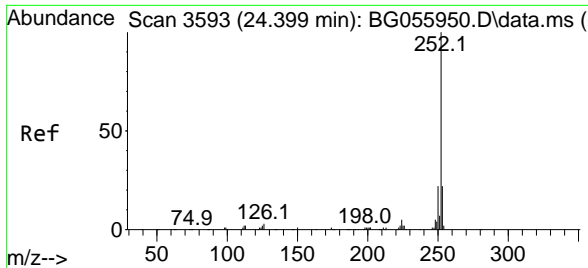
Tgt Ion	Resp	Lower	Upper
228	100		
226	31.6	23.1	34.7
229	26.4	15.7	23.5



#86
 Perylene-d12
 Concen: 20.000 ng
 RT: 25.514 min Scan# 3783
 Delta R.T. -0.001 min
 Lab File: BG055978.D
 Acq: 15 Dec 2022 15:44

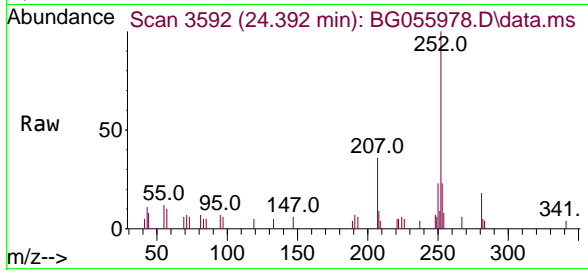
Tgt Ion	Resp	Lower	Upper
264	100		
260	23.7	17.8	26.8
265	23.1	16.6	25.0





#88
 Benzo(b)fluoranthene
 Concen: 2.269 ng
 RT: 24.392 min Scan# 31
 Delta R.T. -0.007 min
 Lab File: BG055978.D
 Acq: 15 Dec 2022 15:44

Instrument :
 BNA_G
 ClientSampleId :
 1521



Tgt Ion:252 Resp: 12842

Ion	Ratio	Lower	Upper
252	100		
253	22.6	17.4	26.0
125	0.0	1.8	2.8#

