

Data Path : Z:\SVOASRV\HPCHEM1\BNA\_G\DATA\BG121818\  
 Data File : BG038693.D  
 Acq On : 18 Dec 2018 14:03  
 Operator : JU/SJ  
 Sample : J6398-01  
 Misc :  
 ALS Vial : 3 Sample Multiplier: 1

Instrument :  
 BNA\_G  
 ClientSampleId :  
 PR-MW-04\_121218

Quant Time: Dec 19 06:57:35 2018  
 Quant Method : Z:\SVOASRV\HPCHEM1\BNA\_G\METHODS\8270-BG121218.M  
 Quant Title : ASP BNA STANDARDS FOR 5 POINT CALIBRATION  
 QLast Update : Wed Dec 12 15:26:27 2018  
 Response via : Initial Calibration

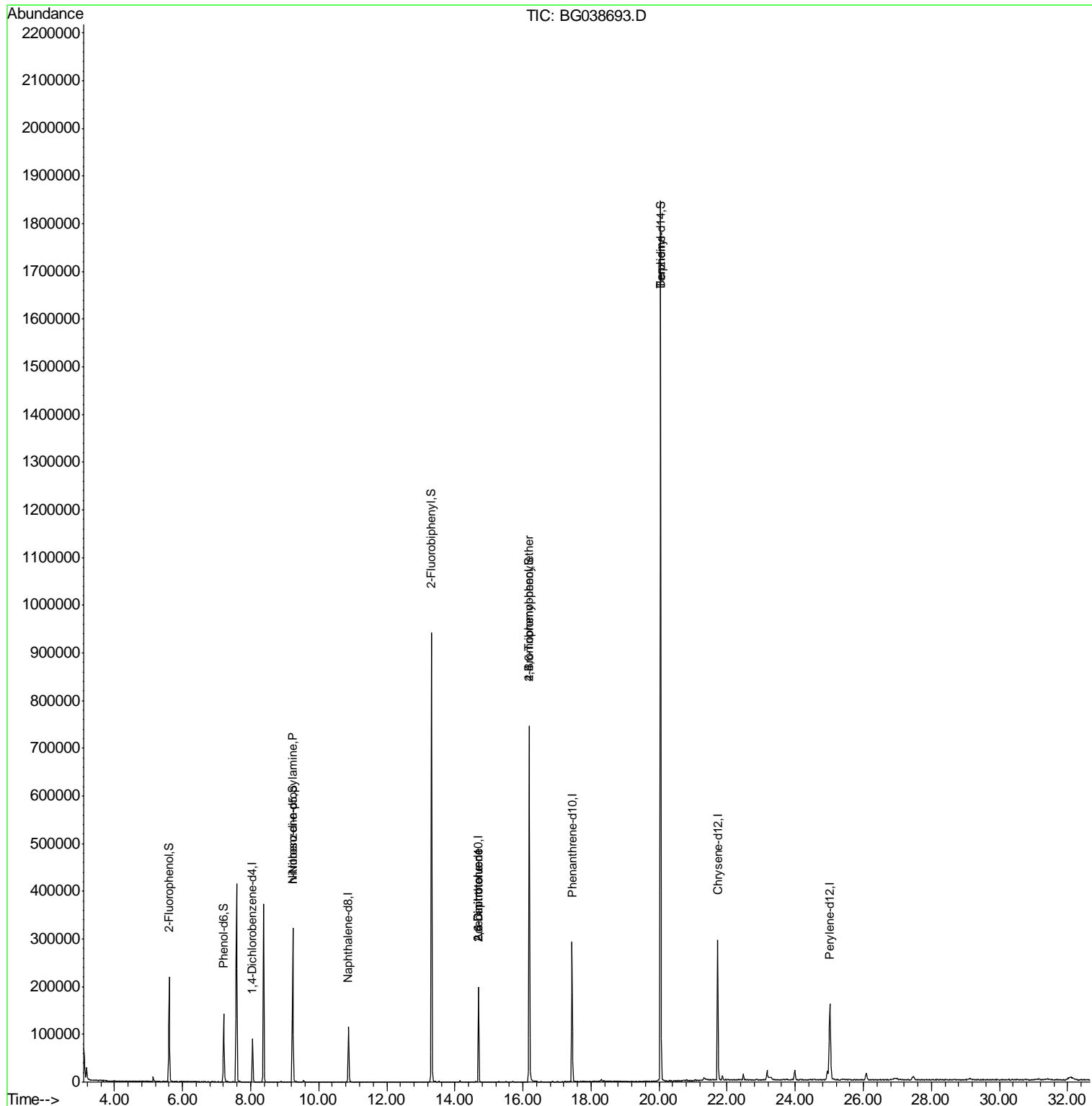
| Internal Standards             | R.T.  | QIon | Response | Conc   | Units | Dev(Min) |
|--------------------------------|-------|------|----------|--------|-------|----------|
| 1) 1,4-Dichlorobenzene-d4      | 8.06  | 152  | 25218    | 20.00  | ng    | 0.00     |
| 21) Naphthalene-d8             | 10.88 | 136  | 102950   | 20.00  | ng    | 0.00     |
| 39) Acenaphthene-d10           | 14.69 | 164  | 72836    | 20.00  | ng    | 0.00     |
| 64) Phenanthrene-d10           | 17.44 | 188  | 187787   | 20.00  | ng    | 0.00     |
| 76) Chrysene-d12               | 21.72 | 240  | 191208   | 20.00  | ng    | 0.00     |
| 87) Perylene-d12               | 25.02 | 264  | 204083   | 20.00  | ng    | 0.00     |
| System Monitoring Compounds    |       |      |          |        |       |          |
| 5) 2-Fluorophenol              | 5.61  | 112  | 93445    | 65.72  | ng    | 0.00     |
| 7) Phenol-d6                   | 7.21  | 99   | 79477    | 40.72  | ng    | 0.00     |
| 23) Nitrobenzene-d5            | 9.24  | 82   | 192071   | 95.31  | ng    | 0.00     |
| 42) 2,4,6-Tribromophenol       | 16.19 | 330  | 151830   | 151.25 | ng    | 0.00     |
| 45) 2-Fluorobiphenyl           | 13.31 | 172  | 484373   | 91.23  | ng    | 0.00     |
| 79) Terphenyl-d14              | 20.05 | 244  | 927208   | 105.53 | ng    | 0.00     |
| Target Compounds               |       |      |          |        |       |          |
| 19) n-Nitroso-di-n-propylamine | 9.24  | 70   | 25084    | 18.298 | ng    | # 75     |
| 51) 2,6-Dinitrotoluene         | 14.69 | 165  | 9163     | 6.798  | ng    | # 19     |
| 57) 2,4-Dinitrotoluene         | 14.69 | 165  | 9163     | 4.826  | ng    | # 21     |
| 67) 4-Bromophenyl-phenylether  | 16.19 | 248  | 9900     | 4.317  | ng    | # 1      |
| 77) Benzidine                  | 20.04 | 184  | 16611    | 2.938  | ng    | # 93     |

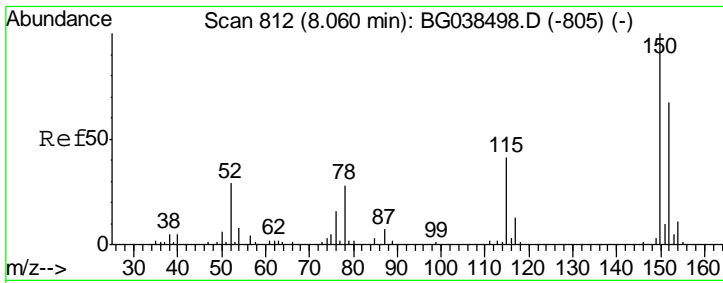
(#) = qualifier out of range (m) = manual integration (+) = signals summed

Data Path : Z:\SVOASRV\HPCHEM1\BNA\_G\DATA\BG121818\  
 Data File : BG038693.D  
 Acq On : 18 Dec 2018 14:03  
 Operator : JU/SJ  
 Sample : J6398-01  
 Misc :  
 ALS Vial : 3 Sample Multiplier: 1

Instrument :  
 BNA\_G  
 ClientSampleId :  
 PR-MW-04\_121218

Quant Time: Dec 19 06:57:35 2018  
 Quant Method : Z:\SVOASRV\HPCHEM1\BNA\_G\METHODS\8270-BG121218.M  
 Quant Title : ASP BNA STANDARDS FOR 5 POINT CALIBRATION  
 QLast Update : Wed Dec 12 15:26:27 2018  
 Response via : Initial Calibration

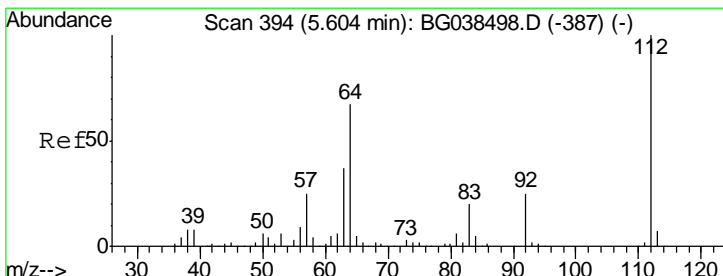
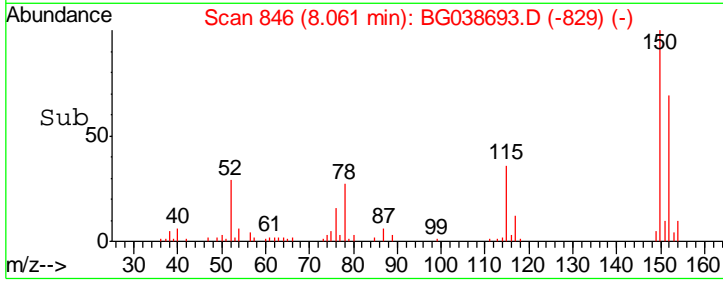
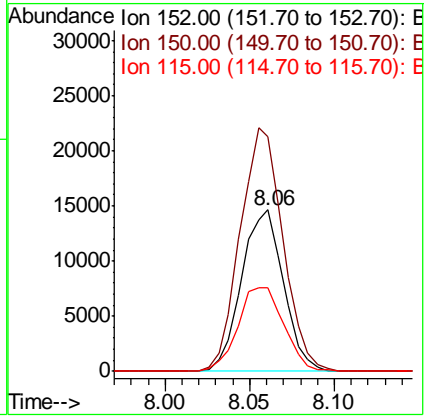
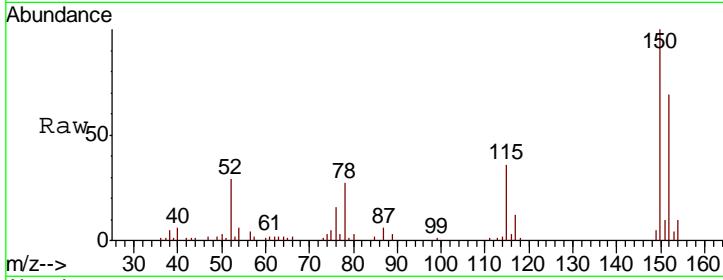




#1  
 1,4-Dichlorobenzene-d4  
 Concen: 20.000 ng  
 RT: 8.06 min Scan# 846  
 Delta R.T. 0.00 min  
 Lab File: BG038693.D  
 Acq: 18 Dec 2018 14:03

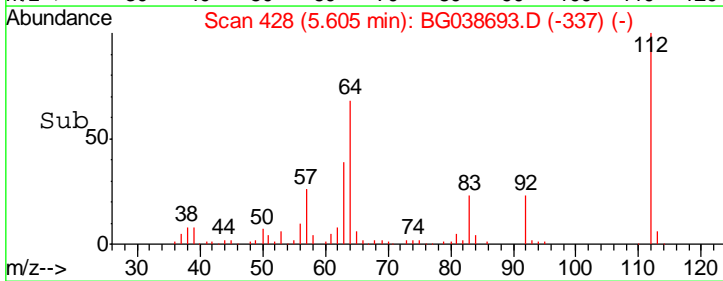
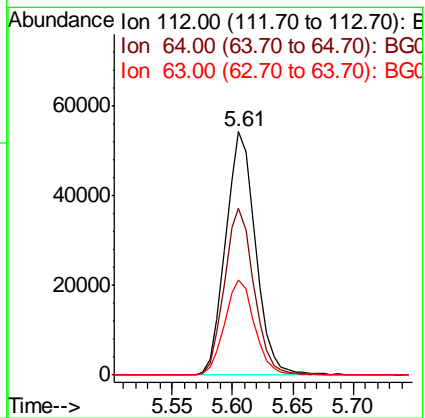
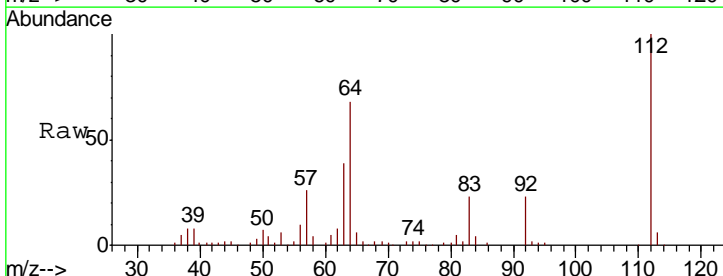
Instrument :  
 BNA\_G  
 ClientSampleId :  
 PR-MW-04\_121218

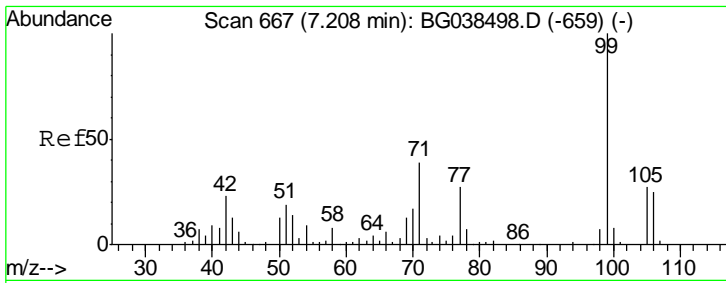
| Tgt Ion | Resp  | Lower | Upper |
|---------|-------|-------|-------|
| 152     | 25218 |       |       |
| 150     | 145.5 | 119.5 | 179.3 |
| 115     | 51.9  | 49.6  | 74.4  |



#5  
 2-Fluorophenol  
 Concen: 65.722 ng  
 RT: 5.61 min Scan# 428  
 Delta R.T. 0.00 min  
 Lab File: BG038693.D  
 Acq: 18 Dec 2018 14:03

| Tgt Ion | Resp  | Lower | Upper |
|---------|-------|-------|-------|
| 112     | 93445 |       |       |
| 64      | 68.5  | 53.4  | 80.2  |
| 63      | 39.2  | 29.3  | 43.9  |

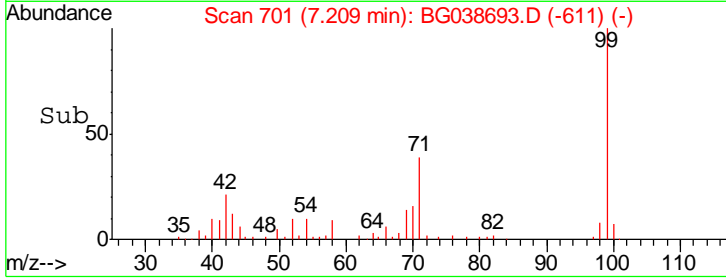
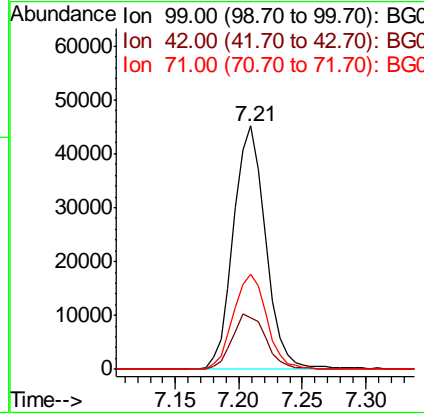
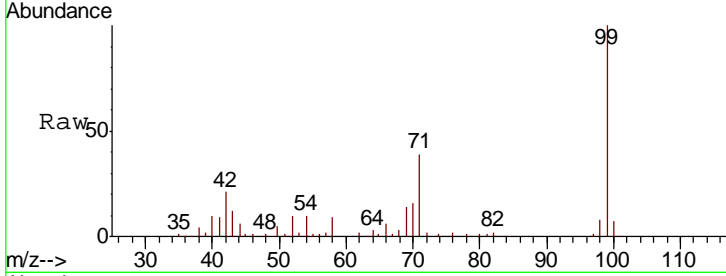




#7  
 Phenol-d6  
 Concen: 40.718 ng  
 RT: 7.21 min Scan# 701  
 Delta R.T. 0.00 min  
 Lab File: BG038693.D  
 Acq: 18 Dec 2018 14:03

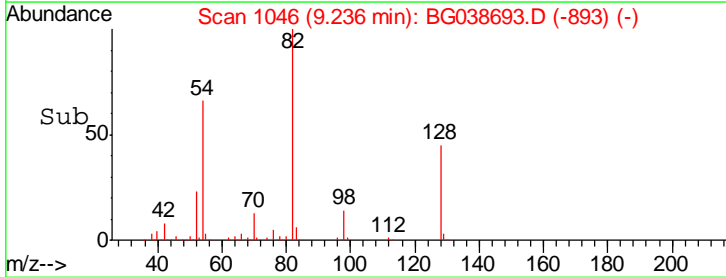
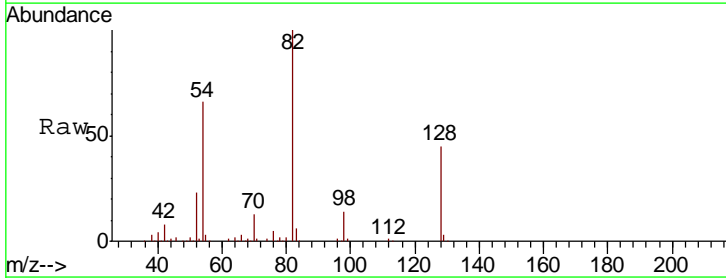
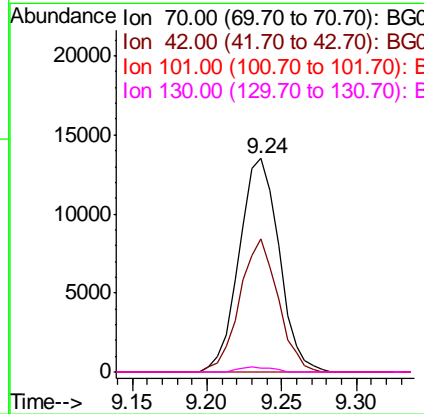
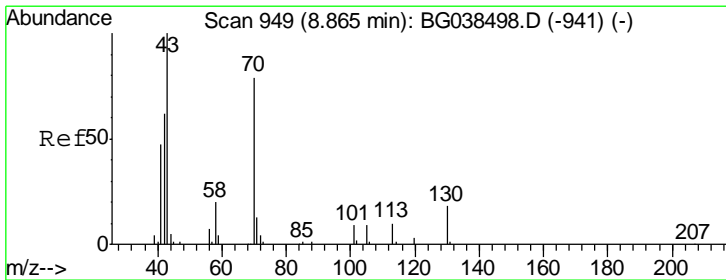
**Instrument :**  
 BNA\_G  
**ClientSampleId :**  
 PR-MW-04\_121218

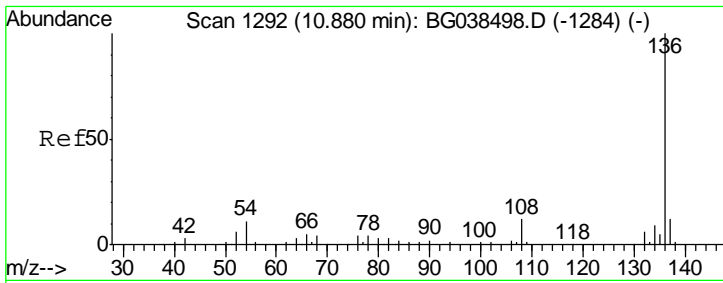
| Tgt Ion | Resp | Lower | Upper |
|---------|------|-------|-------|
| 99      | 100  |       |       |
| 42      | 21.3 | 18.5  | 27.7  |
| 71      | 39.1 | 31.1  | 46.7  |



#19  
 n-Nitroso-di-n-propylamine  
 Concen: 18.298 ng  
 RT: 9.24 min Scan# 1046  
 Delta R.T. 0.37 min  
 Lab File: BG038693.D  
 Acq: 18 Dec 2018 14:03

| Tgt Ion | Resp | Lower | Upper |
|---------|------|-------|-------|
| 70      | 100  |       |       |
| 42      | 62.6 | 63.6  | 95.4# |
| 101     | 0.0  | 9.2   | 13.8# |
| 130     | 1.7  | 18.5  | 27.7# |



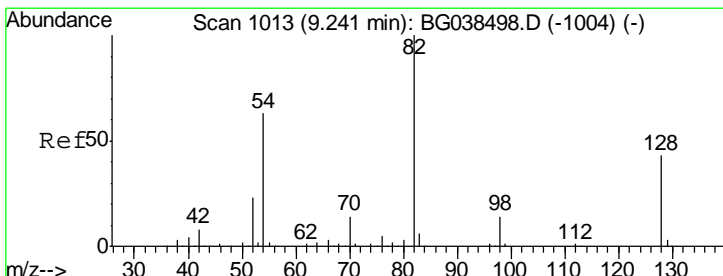
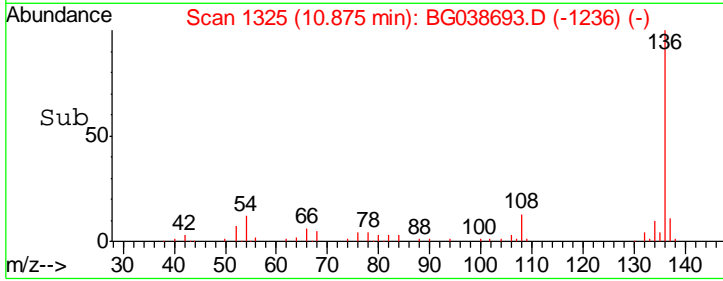
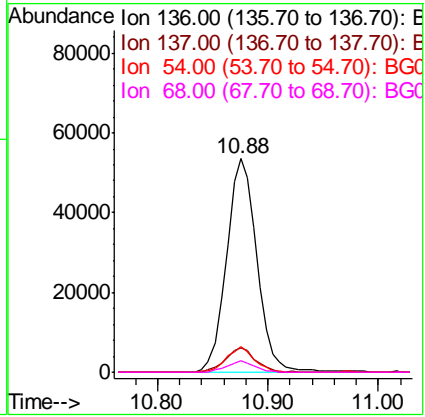
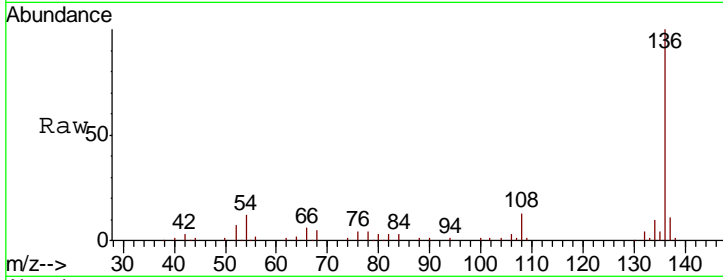


#21  
 Naphthalene-d8  
 Concen: 20.000 ng  
 RT: 10.88 min Scan# 1325  
 Delta R.T. -0.00 min  
 Lab File: BG038693.D  
 Acq: 18 Dec 2018 14:03

**Instrument :**  
 BNA\_G  
**ClientSampleId :**  
 PR-MW-04\_121218

Tgt Ion: 136 Resp: 102950

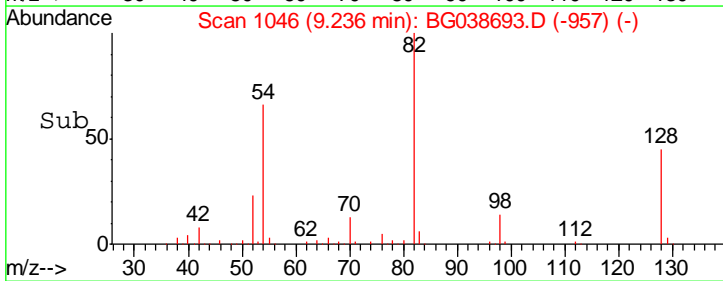
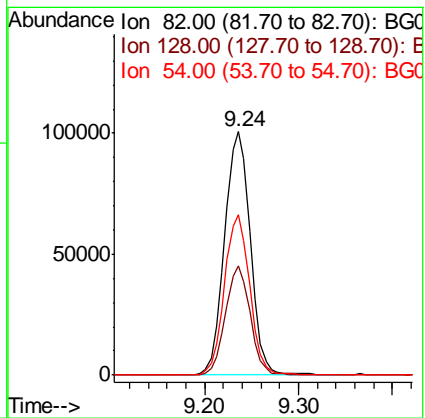
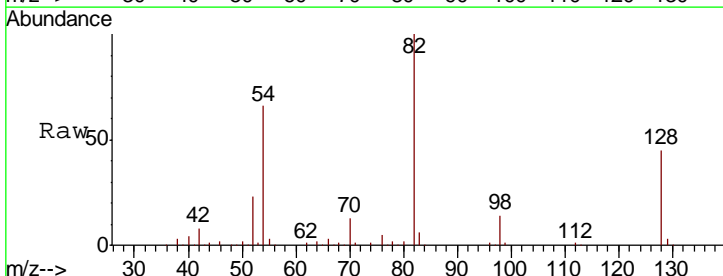
| Ion | Ratio | Lower | Upper |
|-----|-------|-------|-------|
| 136 | 100   |       |       |
| 137 | 11.1  | 9.3   | 13.9  |
| 54  | 12.3  | 8.5   | 12.7  |
| 68  | 5.4   | 3.5   | 5.3#  |

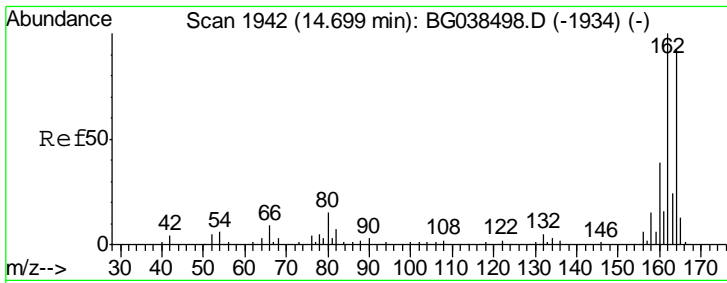


#23  
 Nitrobenzene-d5  
 Concen: 95.312 ng  
 RT: 9.24 min Scan# 1046  
 Delta R.T. -0.00 min  
 Lab File: BG038693.D  
 Acq: 18 Dec 2018 14:03

Tgt Ion: 82 Resp: 192071

| Ion | Ratio | Lower | Upper |
|-----|-------|-------|-------|
| 82  | 100   |       |       |
| 128 | 45.0  | 34.6  | 52.0  |
| 54  | 66.0  | 50.6  | 76.0  |



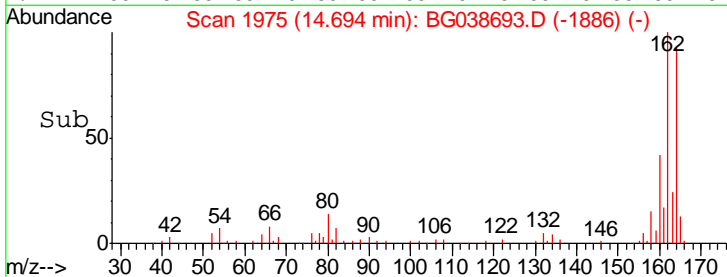
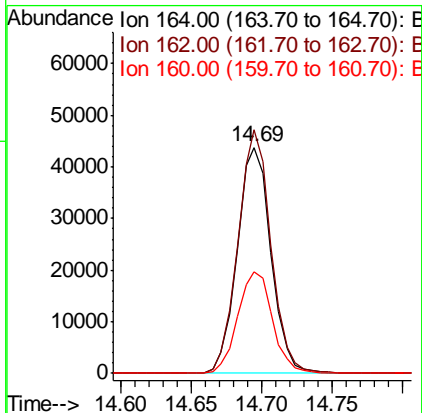
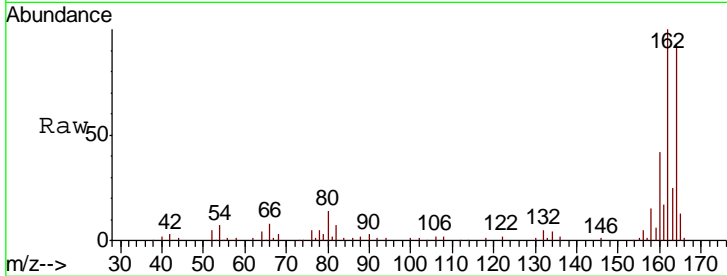


#39

Acenaphthene-d10  
 Concen: 20.000 ng  
 RT: 14.69 min Scan# 1975  
 Delta R.T. -0.00 min  
 Lab File: BG038693.D  
 Acq: 18 Dec 2018 14:03

Instrument :  
 BNA\_G  
 ClientSampleId :  
 PR-MW-04\_121218

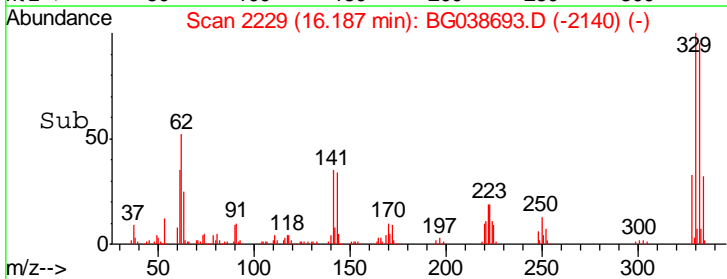
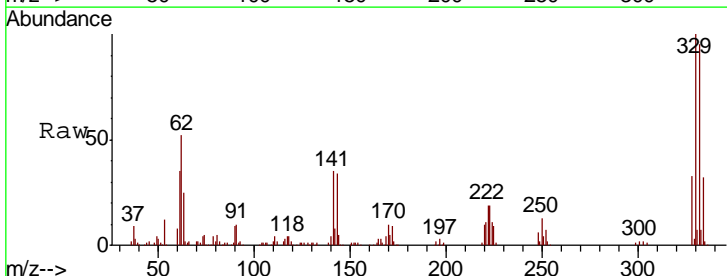
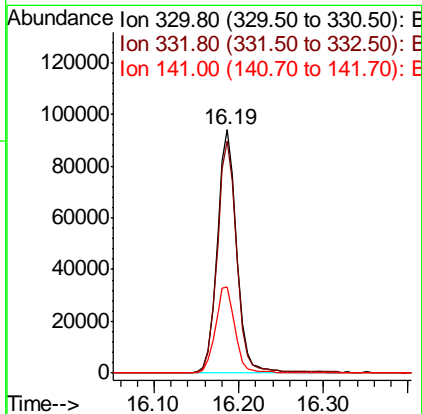
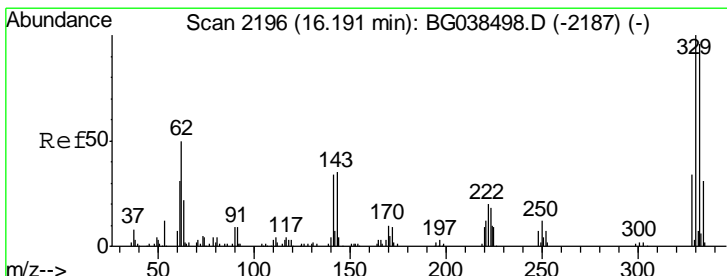
| Tgt Ion | Resp  | Lower | Upper |
|---------|-------|-------|-------|
| 164     | 100   |       |       |
| 162     | 107.8 | 86.6  | 130.0 |
| 160     | 45.2  | 34.2  | 51.2  |

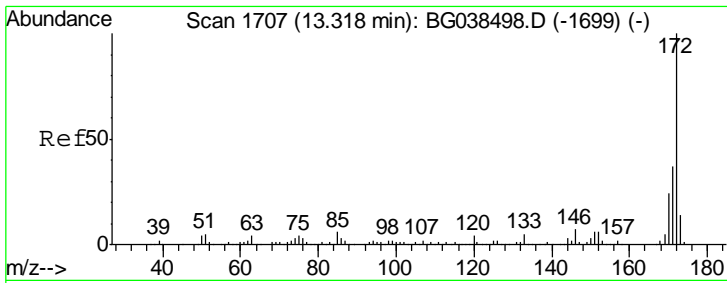


#42

2,4,6-Tribromophenol  
 Concen: 151.254 ng  
 RT: 16.19 min Scan# 2229  
 Delta R.T. -0.00 min  
 Lab File: BG038693.D  
 Acq: 18 Dec 2018 14:03

| Tgt Ion | Resp | Lower | Upper |
|---------|------|-------|-------|
| 330     | 100  |       |       |
| 332     | 96.0 | 76.9  | 115.3 |
| 141     | 36.2 | 28.8  | 43.2  |

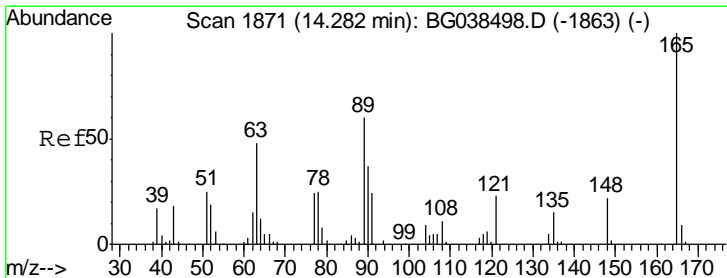
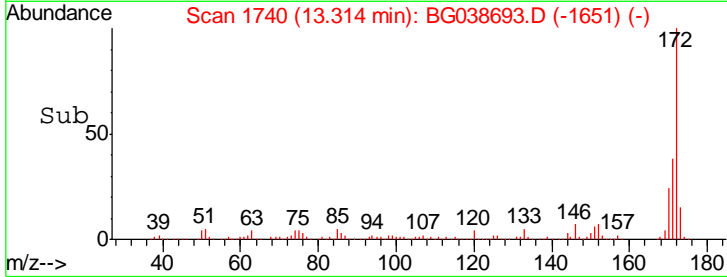
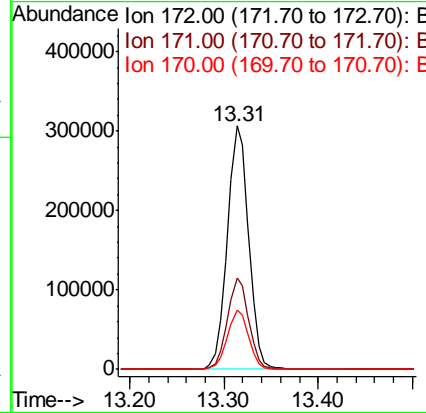
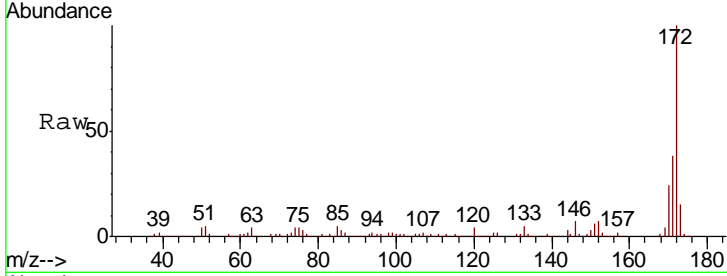




#45  
 2-Fluorobiphenyl  
 Concen: 91.230 ng  
 RT: 13.31 min Scan# 1740  
 Delta R.T. -0.00 min  
 Lab File: BG038693.D  
 Acq: 18 Dec 2018 14:03

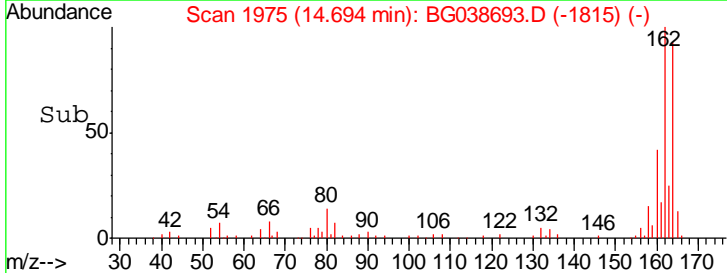
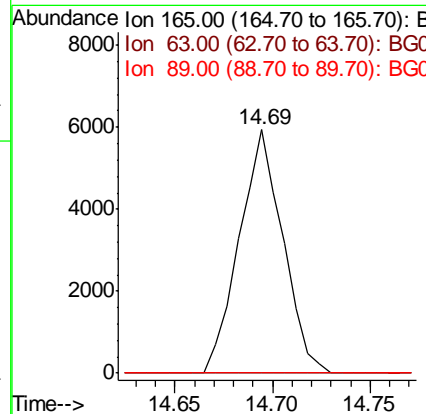
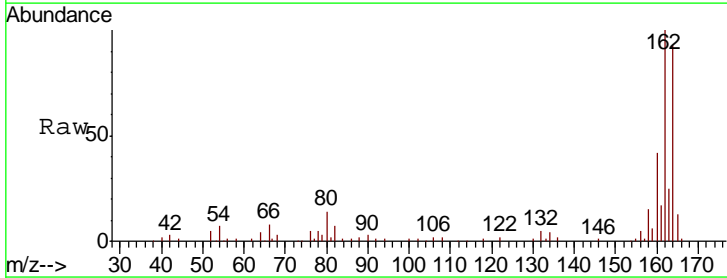
Instrument :  
 BNA\_G  
 ClientSampleId :  
 PR-MW-04\_121218

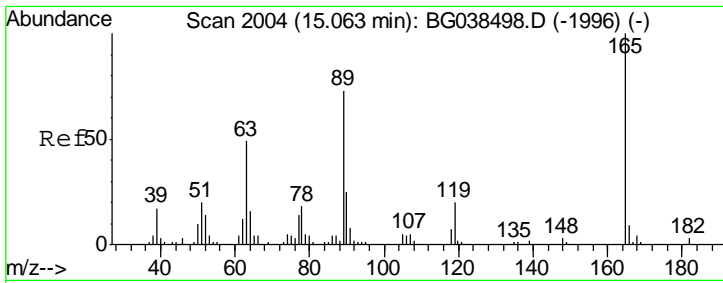
| Tgt Ion | Resp | Lower | Upper |
|---------|------|-------|-------|
| 172     | 100  |       |       |
| 171     | 37.8 | 29.8  | 44.6  |
| 170     | 24.4 | 19.5  | 29.3  |



#51  
 2,6-Dinitrotoluene  
 Concen: 6.798 ng  
 RT: 14.69 min Scan# 1975  
 Delta R.T. 0.41 min  
 Lab File: BG038693.D  
 Acq: 18 Dec 2018 14:03

| Tgt Ion | Resp | Lower | Upper |
|---------|------|-------|-------|
| 165     | 100  |       |       |
| 63      | 0.0  | 51.8  | 77.6# |
| 89      | 0.0  | 47.9  | 71.9# |

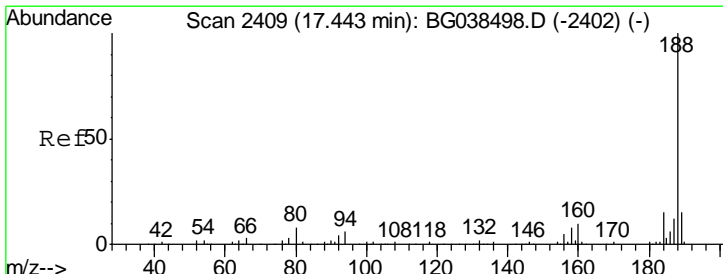
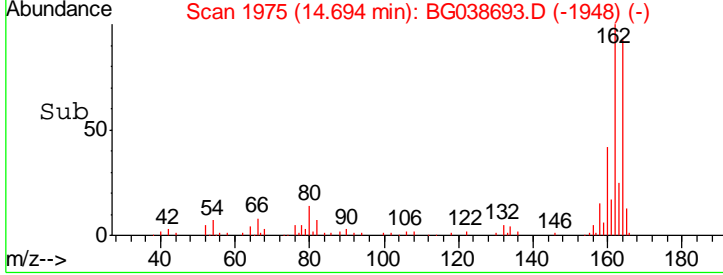
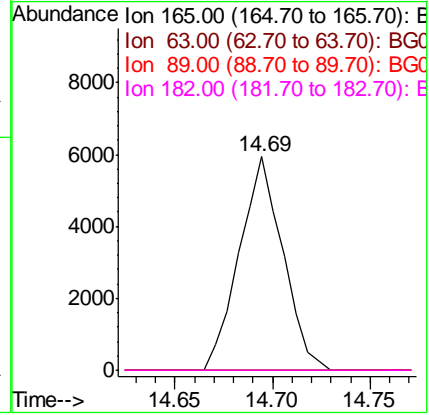
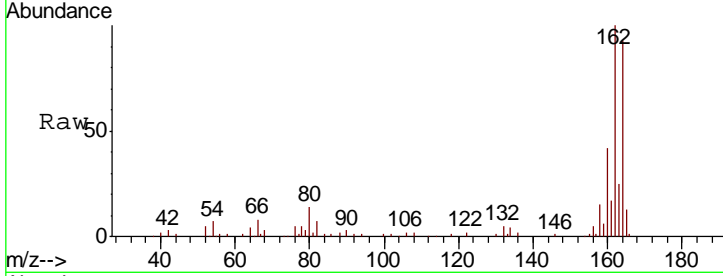




#57  
 2,4-Dinitrotoluene  
 Concen: 4.826 ng  
 RT: 14.69 min Scan# 1975  
 Delta R.T. -0.37 min  
 Lab File: BG038693.D  
 Acq: 18 Dec 2018 14:03

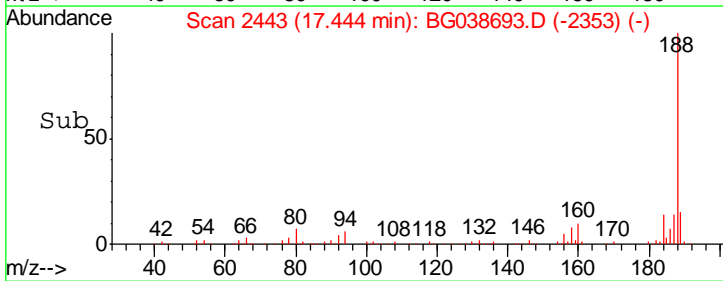
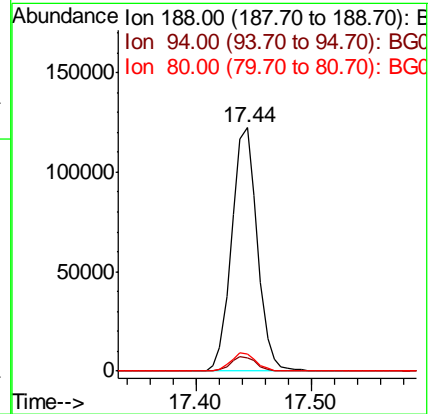
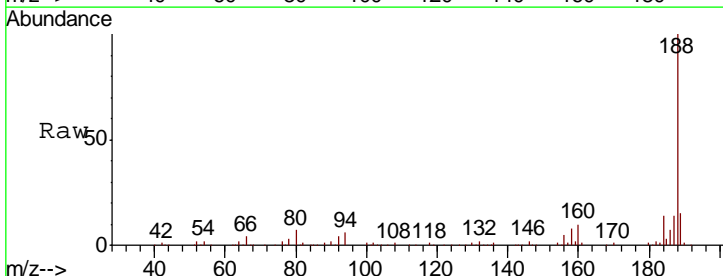
Instrument :  
 BNA\_G  
 ClientSampleId :  
 PR-MW-04\_121218

| Tgt Ion | Resp | Lower | Upper |
|---------|------|-------|-------|
| 165     | 100  |       |       |
| 63      | 0.0  | 39.0  | 58.4# |
| 89      | 0.0  | 58.0  | 87.0# |
| 182     | 0.0  | 2.3   | 3.5#  |

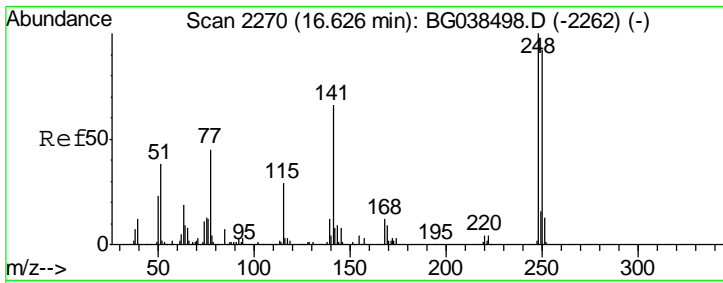


#64  
 Phenanthrene-d10  
 Concen: 20.000 ng  
 RT: 17.44 min Scan# 2443  
 Delta R.T. 0.00 min  
 Lab File: BG038693.D  
 Acq: 18 Dec 2018 14:03

| Tgt Ion | Resp | Lower | Upper |
|---------|------|-------|-------|
| 188     | 100  |       |       |
| 94      | 5.7  | 5.1   | 7.7   |
| 80      | 6.8  | 6.1   | 9.1   |



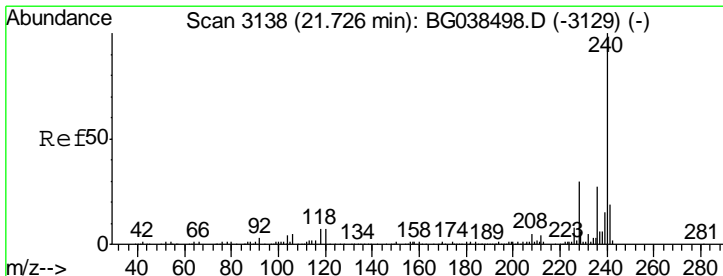
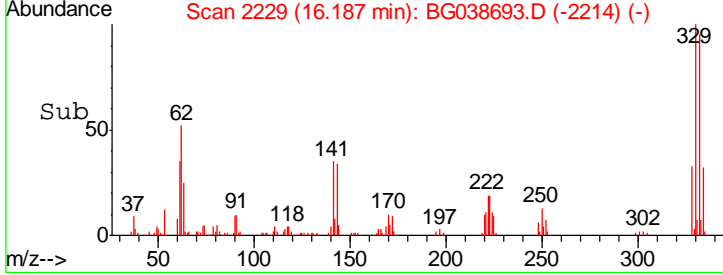
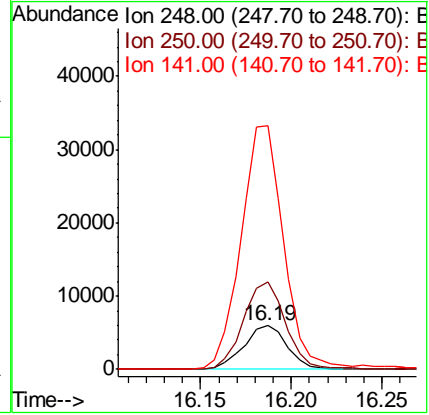
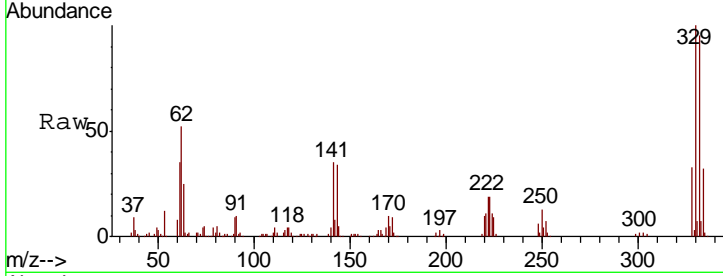




#67  
 4-Bromophenyl-phenylether  
 Concen: 4.317 ng  
 RT: 16.19 min Scan# 2229  
 Delta R.T. -0.44 min  
 Lab File: BG038693.D  
 Acq: 18 Dec 2018 14:03

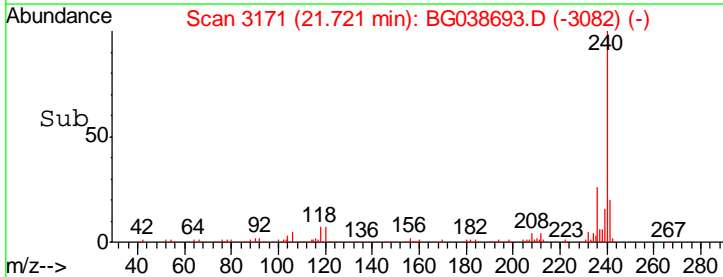
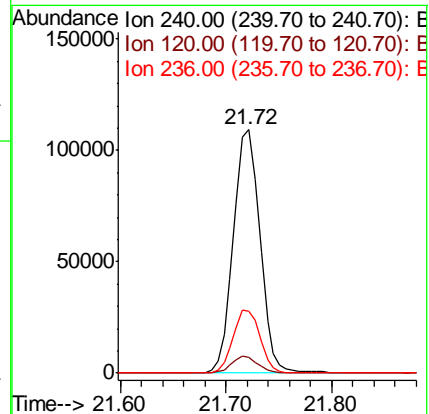
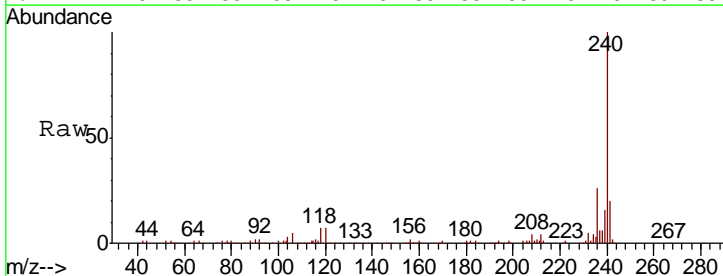
Instrument :  
 BNA\_G  
 ClientSampleId :  
 PR-MW-04\_121218

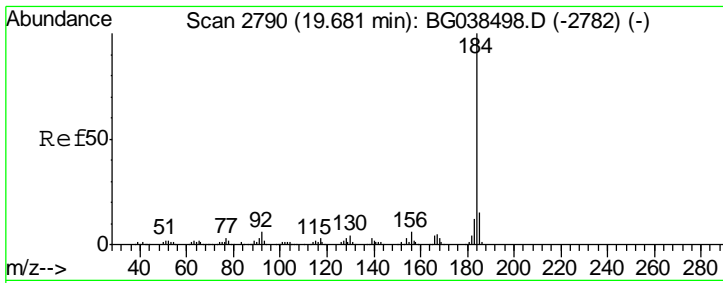
| Tgt Ion | Resp  | Lower | Upper  |
|---------|-------|-------|--------|
| 248     | 100   |       |        |
| 250     | 203.0 | 73.4  | 110.2# |
| 141     | 422.7 | 52.9  | 79.3#  |



#76  
 Chrysene-d12  
 Concen: 20.000 ng  
 RT: 21.72 min Scan# 3171  
 Delta R.T. -0.00 min  
 Lab File: BG038693.D  
 Acq: 18 Dec 2018 14:03

| Tgt Ion | Resp | Lower | Upper |
|---------|------|-------|-------|
| 240     | 100  |       |       |
| 120     | 6.6  | 5.3   | 7.9   |
| 236     | 25.5 | 21.4  | 32.2  |

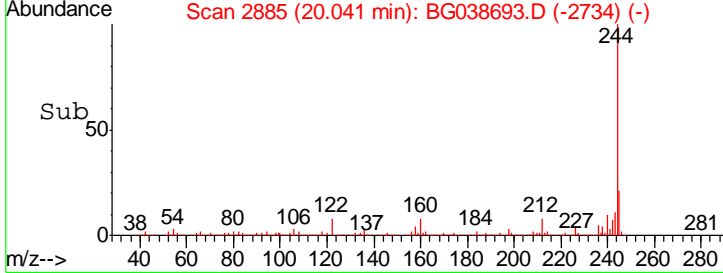
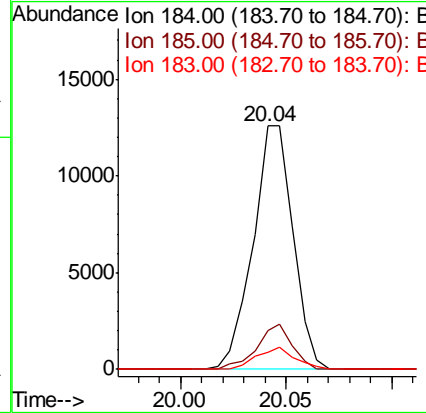
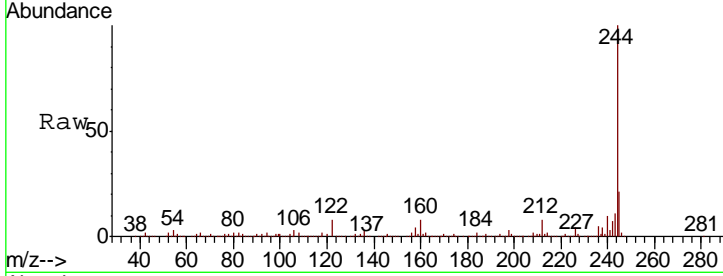




#77  
 Benzidine  
 Concen: 2.938 ng  
 RT: 20.04 min Scan# 2885  
 Delta R.T. 0.36 min  
 Lab File: BG038693.D  
 Acq: 18 Dec 2018 14:03

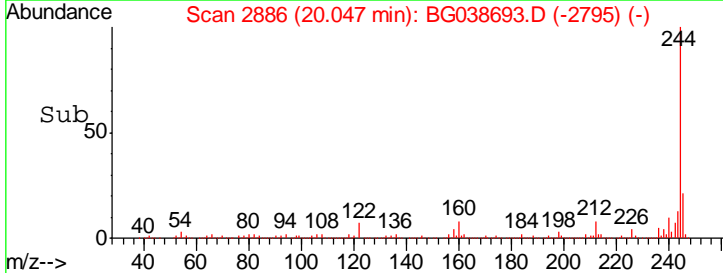
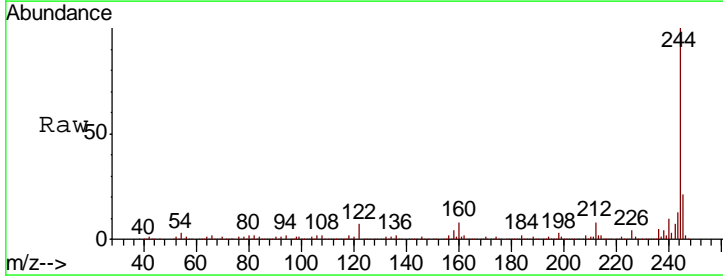
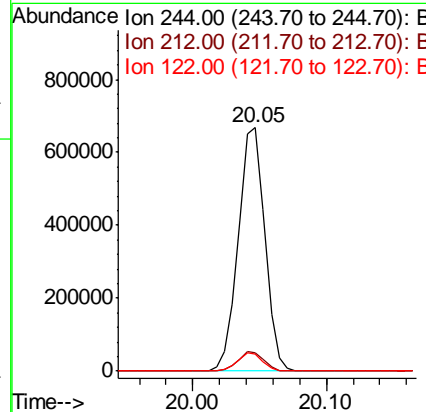
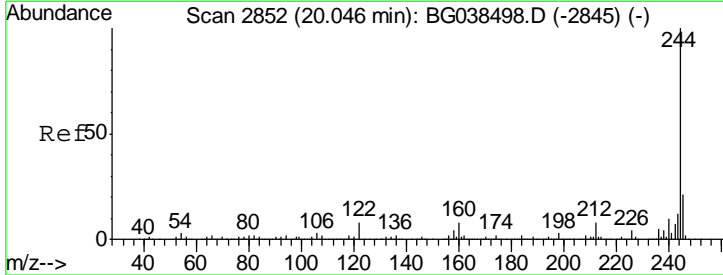
Instrument :  
 BNA\_G  
 ClientSampleId :  
 PR-MW-04\_121218

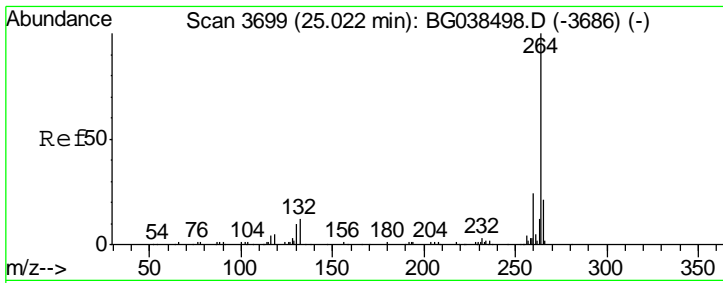
| Tgt Ion | Resp  | Lower | Upper |
|---------|-------|-------|-------|
| 184     | 16611 |       |       |
| 185     | 16.2  | 12.2  | 18.2  |
| 183     | 7.0   | 9.6   | 14.4# |



#79  
 Terphenyl-d14  
 Concen: 105.535 ng  
 RT: 20.05 min Scan# 2886  
 Delta R.T. 0.00 min  
 Lab File: BG038693.D  
 Acq: 18 Dec 2018 14:03

| Tgt Ion | Resp   | Lower | Upper |
|---------|--------|-------|-------|
| 244     | 927208 |       |       |
| 212     | 7.7    | 6.2   | 9.2   |
| 122     | 7.2    | 6.3   | 9.5   |





#87  
 Perylene-d12  
 Concen: 20.000 ng  
 RT: 25.02 min Scan# 3732  
 Delta R.T. -0.00 min  
 Lab File: BG038693.D  
 Acq: 18 Dec 2018 14:03

Instrument :  
 BNA\_G  
 ClientSampleId :  
 PR-MW-04\_121218

Tgt Ion: 264 Resp: 204083

| Ion | Ratio | Lower | Upper |
|-----|-------|-------|-------|
| 264 | 100   |       |       |
| 260 | 22.1  | 18.9  | 28.3  |
| 265 | 22.7  | 17.0  | 25.4  |

