

Data Path : Z:\svoasrv\HPCHEM1\BNA_G\Data\BG122920\
 Data File : BG047839.D
 Acq On : 29 Dec 2020 16:58
 Operator : CG/JU
 Sample : L5227-01
 Misc :
 ALS Vial : 6 Sample Multiplier: 1

Instrument :
 BNA_G
 ClientSampleId :
 OWL-C1-GW

Quant Time: Dec 29 17:37:20 2020
 Quant Method : Z:\SVOASRV\HPCHEM1\BNA_G\METHODS\8270-BG121720.M
 Quant Title : ASP BNA STANDARDS FOR 5 POINT CALIBRATION
 QLast Update : Thu Dec 17 15:55:16 2020
 Response via : Initial Calibration

Compound	R.T.	QIon	Response	Conc	Units	Dev(Min)

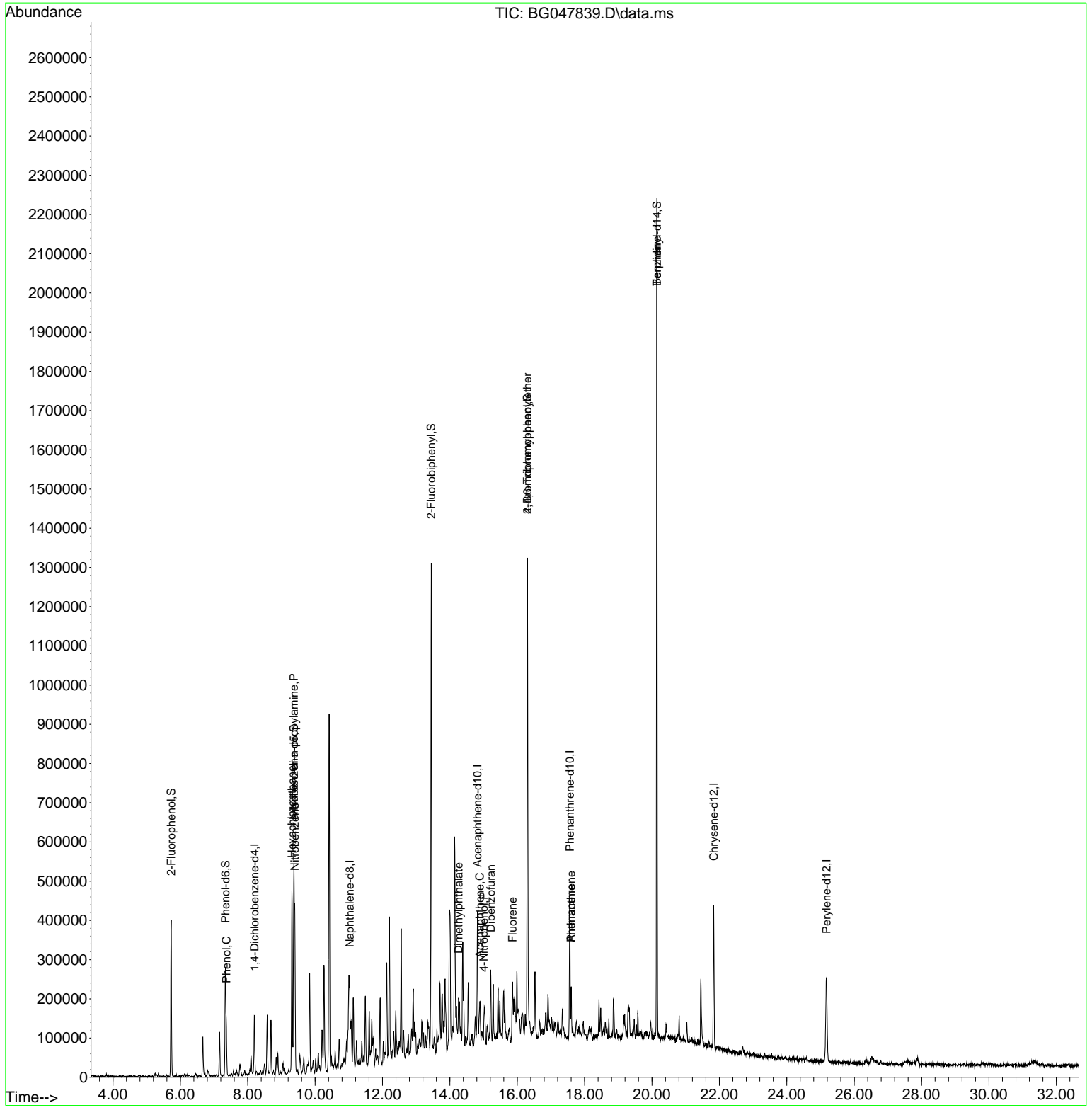
Internal Standards						
1) 1,4-Dichlorobenzene-d4	8.200	152	38100	20.00	ng	0.00
21) Naphthalene-d8	11.027	136	133672	20.00	ng	# 0.00
39) Acenaphthene-d10	14.822	164	101473	20.00	ng	0.00
64) Phenanthrene-d10	17.560	188	229511	20.00	ng	# 0.00
76) Chrysene-d12	21.832	240	223124	20.00	ng	# 0.00
86) Perylene-d12	25.181	264	247124	20.00	ng	0.00
System Monitoring Compounds						
5) 2-Fluorophenol	5.727	112	143193	65.02	ng	0.00
7) Phenol-d6	7.337	99	127948	39.74	ng	0.00
23) Nitrobenzene-d5	9.370	82	302045	83.11	ng	0.00
42) 2,4,6-Tribromophenol	16.303	330	207664	119.88	ng	0.00
45) 2-Fluorobiphenyl	13.447	172	611866	78.03	ng	0.00
79) Terphenyl-d14	20.145	244	933598	68.95	ng	0.00
Target Compounds						
						Qvalue
10) Phenol	7.366	94	52195	17.88	ng	# 59
18) Hexachloroethane	9.317	117	66864	56.40	ng	# 1
19) n-Nitroso-di-n-propyla...	9.370	70	50147	22.38	ng	# 80
24) Nitrobenzene	9.399	77	20299	5.92	ng	# 13
50) Dimethylphthalate	14.258	163	59477	6.80	ng	# 96
52) Acenaphthene	14.887	154	27954	4.24	ng	# 94
55) Dibenzofuran	15.216	168	28247	2.96	ng	# 70
56) 4-Nitrophenol	15.010	139	7406	5.83	ng	79
58) Fluorene	15.862	166	52244	6.44	ng	95
67) 4-Bromophenyl-phenylether	16.303	248	15238	4.94	ng	# 1
70) Pentachlorophenol	17.196	266	56	Below Cal		# 19
71) Phenanthrene	17.601	178	78817	6.37	ng	97
72) Anthracene	17.601	178	78817	6.57	ng	98
77) Benzidine	20.145	184	23799	3.97	ng	94

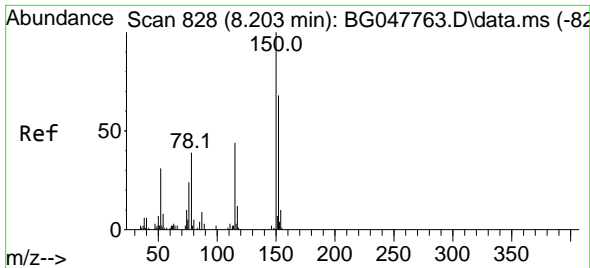
(#) = qualifier out of range (m) = manual integration (+) = signals summed

Data Path : Z:\svoasrv\HPCHEM1\BNA_G\Data\BG122920\
 Data File : BG047839.D
 Acq On : 29 Dec 2020 16:58
 Operator : CG/JU
 Sample : L5227-01
 Misc :
 ALS Vial : 6 Sample Multiplier: 1

Instrument :
 BNA_G
ClientSampled :
 OWL-C1-GW

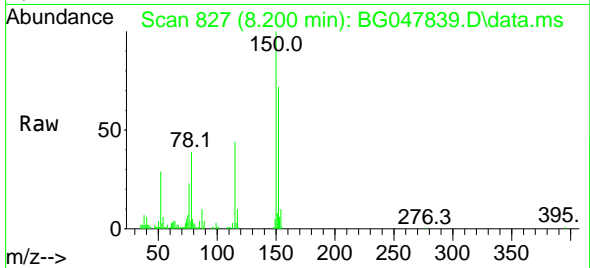
Quant Time: Dec 29 17:37:20 2020
 Quant Method : Z:\SVOASRV\HPCHEM1\BNA_G\METHODS\8270-BG121720.M
 Quant Title : ASP BNA STANDARDS FOR 5 POINT CALIBRATION
 QLast Update : Thu Dec 17 15:55:16 2020
 Response via : Initial Calibration



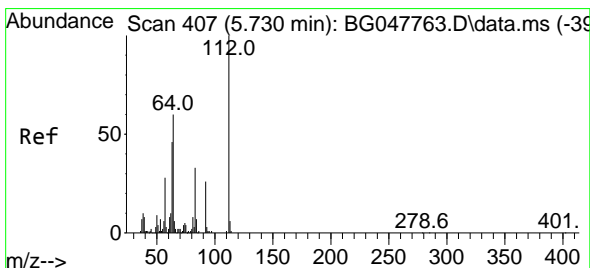
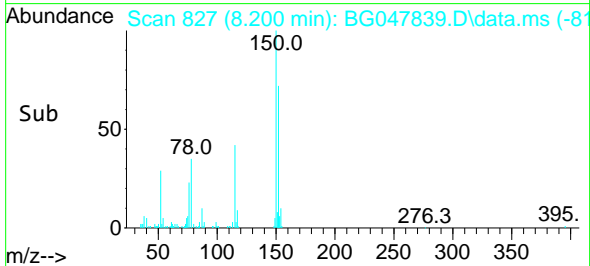
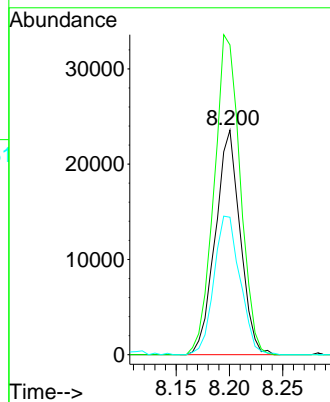


#1
 1,4-Dichlorobenzene-d4
 Concen: 20.00 ng
 RT: 8.200 min Scan# 827
 Delta R.T. -0.002 min
 Lab File: BG047839.D
 Acq: 29 Dec 2020 16:58

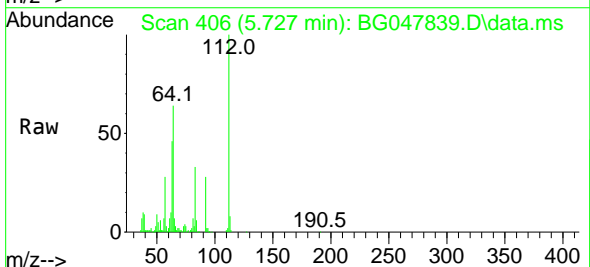
Instrument :
 BNA_G
 ClientSampled :
 OWL-C1-GW



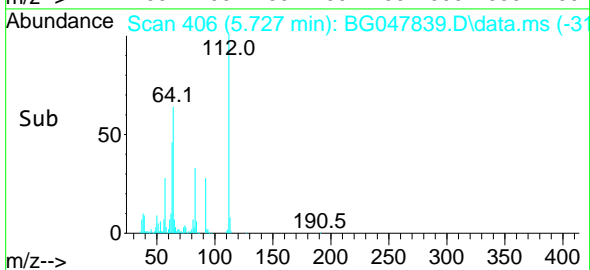
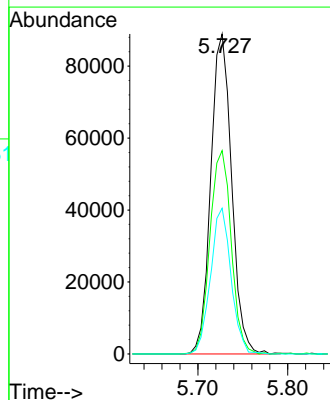
Tgt Ion:152 Resp: 38100
 Ion Ratio Lower Upper
 152 100
 150 138.0 125.0 187.6
 115 61.2 41.8 62.6

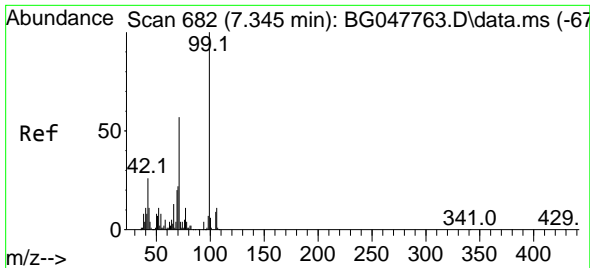


#5
 2-Fluorophenol
 Concen: 65.02 ng
 RT: 5.727 min Scan# 406
 Delta R.T. -0.003 min
 Lab File: BG047839.D
 Acq: 29 Dec 2020 16:58



Tgt Ion:112 Resp: 143193
 Ion Ratio Lower Upper
 112 100
 64 63.6 46.7 70.1
 63 45.6 22.8 34.2#

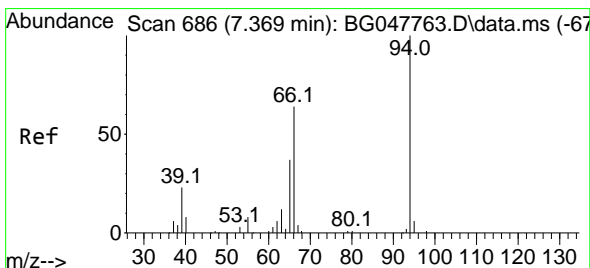
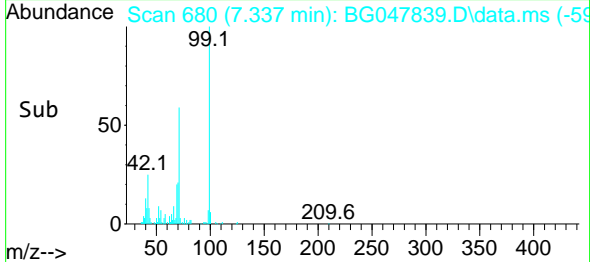
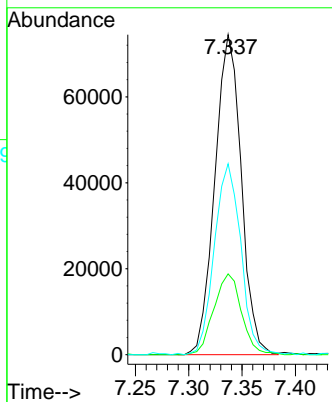
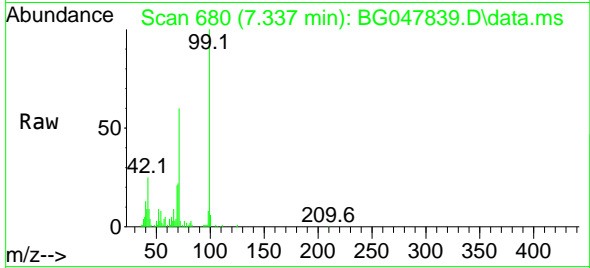




#7
 Phenol-d6
 Concen: 39.74 ng
 RT: 7.337 min Scan# 680
 Delta R.T. -0.009 min
 Lab File: BG047839.D
 Acq: 29 Dec 2020 16:58

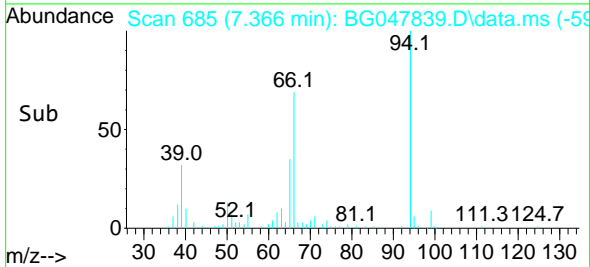
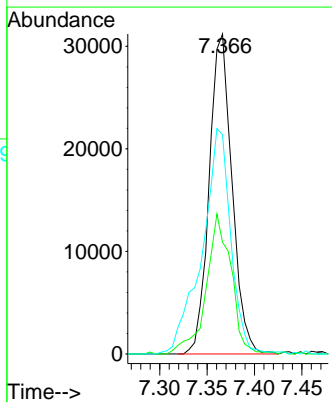
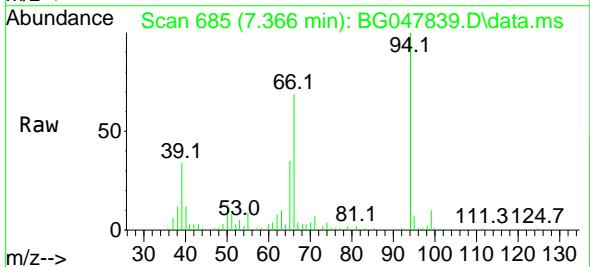
Instrument :
 BNA_G
ClientSampleId :
 OWL-C1-GW

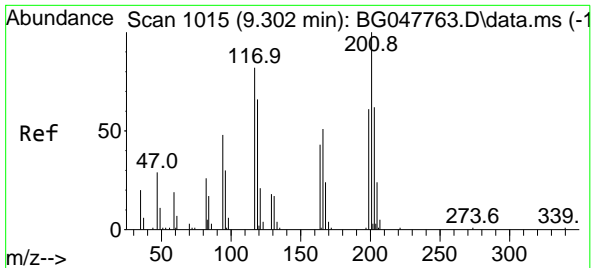
Tgt Ion	Resp	Lower	Upper
99	127948		
42	25.2	12.8	19.2#
71	59.7	24.6	36.8#



#10
 Phenol
 Concen: 17.88 ng
 RT: 7.366 min Scan# 685
 Delta R.T. -0.003 min
 Lab File: BG047839.D
 Acq: 29 Dec 2020 16:58

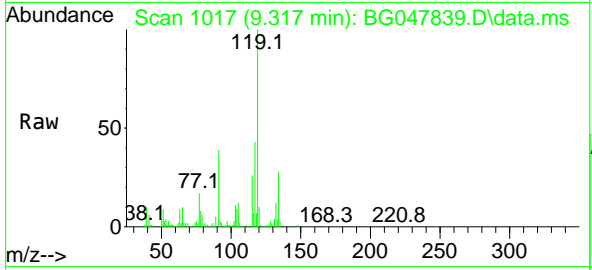
Tgt Ion	Resp	Lower	Upper
94	52195		
65	34.9	6.6	46.6
66	68.6	13.9	53.9#



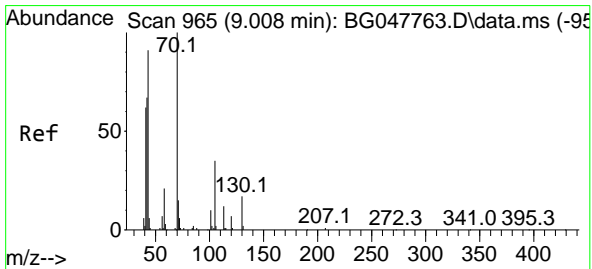
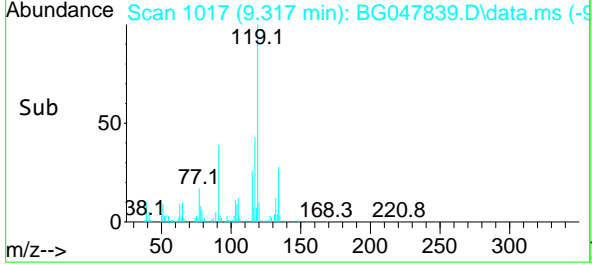
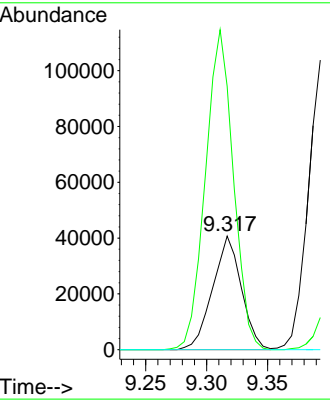


#18
 Hexachloroethane
 Concen: 56.40 ng
 RT: 9.317 min Scan# 1017
 Delta R.T. 0.015 min
 Lab File: BG047839.D
 Acq: 29 Dec 2020 16:58

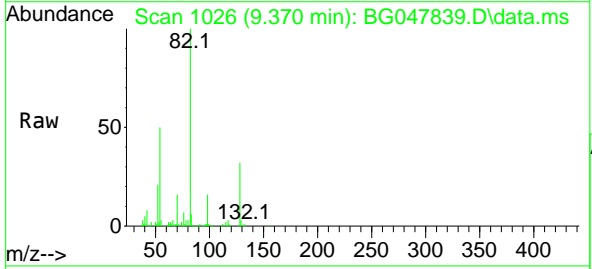
Instrument :
 BNA_G
ClientSampled :
 OWL-C1-GW



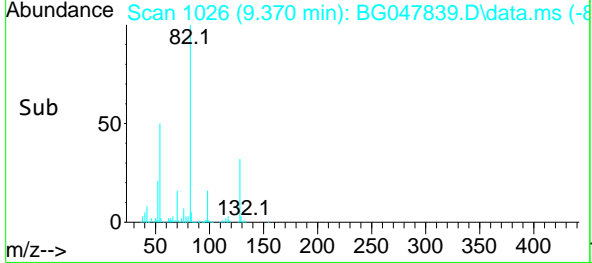
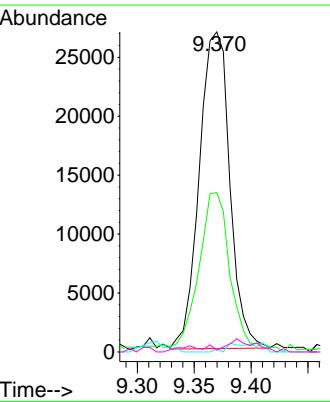
Tgt Ion:117 Resp: 66864
 Ion Ratio Lower Upper
 117 100
 119 231.9 77.5 116.3#
 201 0.0 104.9 157.3#

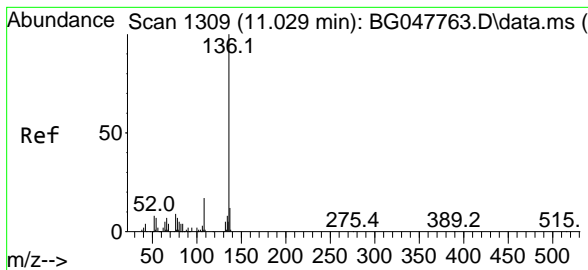


#19
 n-Nitroso-di-n-propylamine
 Concen: 22.38 ng
 RT: 9.370 min Scan# 1026
 Delta R.T. 0.362 min
 Lab File: BG047839.D
 Acq: 29 Dec 2020 16:58



Tgt Ion: 70 Resp: 50147
 Ion Ratio Lower Upper
 70 100
 42 49.8 45.6 68.4
 101 1.0 8.4 12.6#
 130 0.6 17.8 26.8#

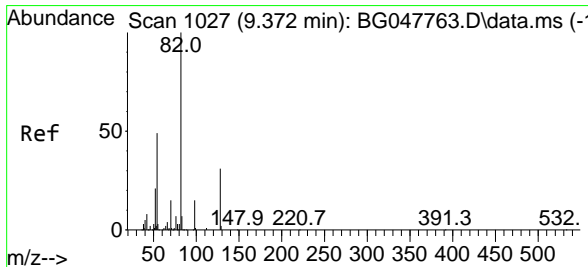
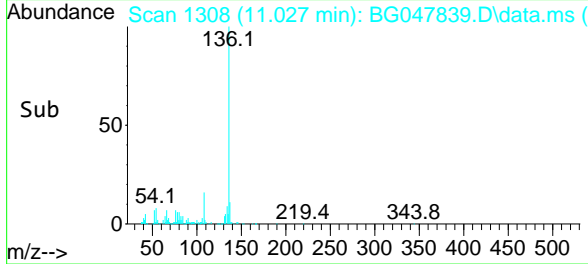
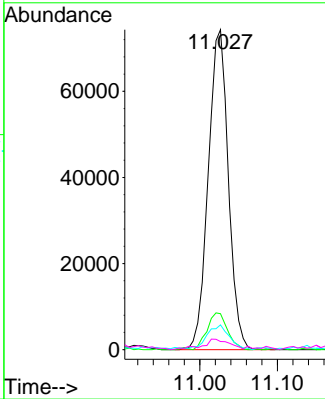
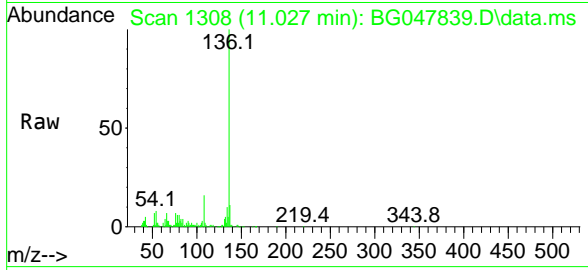




#21
 Naphthalene-d8
 Concen: 20.00 ng
 RT: 11.027 min Scan# 1308
 Delta R.T. -0.003 min
 Lab File: BG047839.D
 Acq: 29 Dec 2020 16:58

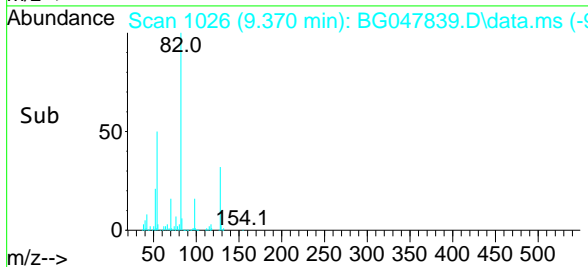
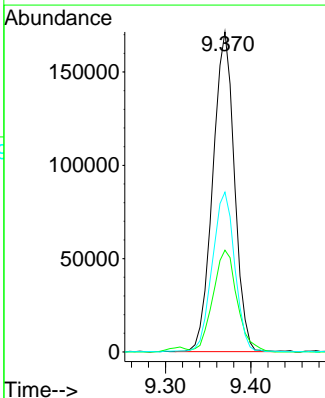
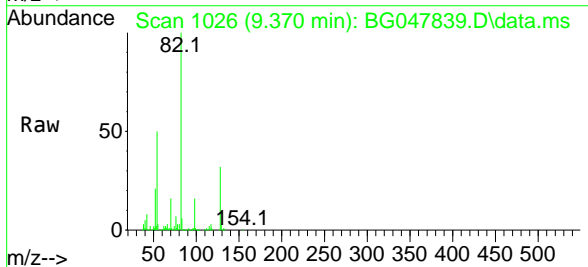
Instrument :
 BNA_G
 ClientSampleId :
 OWL-C1-GW

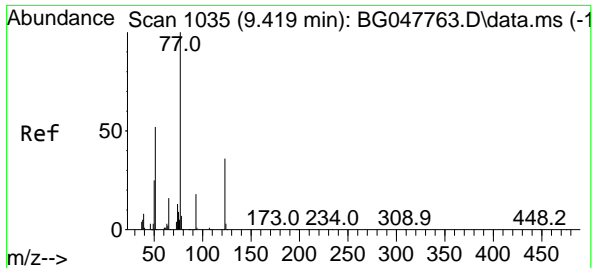
Tgt Ion	Resp	Lower	Upper
136	100		
137	11.2	9.1	13.7
54	7.7	6.2	9.4
68	2.6	5.0	7.4



#23
 Nitrobenzene-d5
 Concen: 83.11 ng
 RT: 9.370 min Scan# 1026
 Delta R.T. -0.003 min
 Lab File: BG047839.D
 Acq: 29 Dec 2020 16:58

Tgt Ion	Resp	Lower	Upper
82	100		
128	31.8	37.0	55.6
54	50.0	39.0	58.4



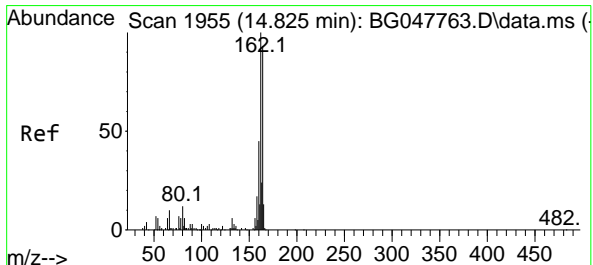
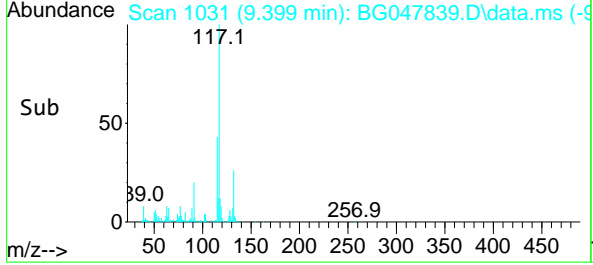
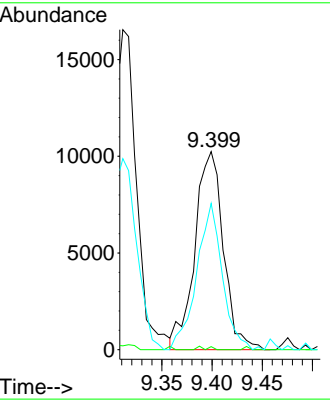
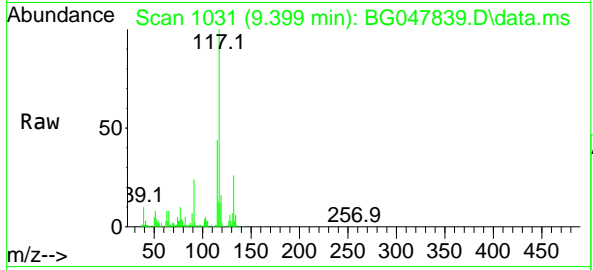


#24
 Nitrobenzene
 Concen: 5.92 ng
 RT: 9.399 min Scan# 1031
 Delta R.T. -0.020 min
 Lab File: BG047839.D
 Acq: 29 Dec 2020 16:58

Instrument :
 BNA_G
ClientSampled :
 OWL-C1-GW

Tgt Ion: 77 Resp: 20299

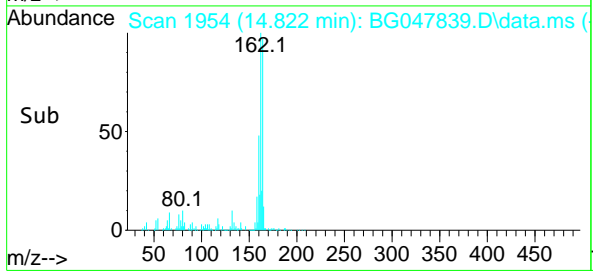
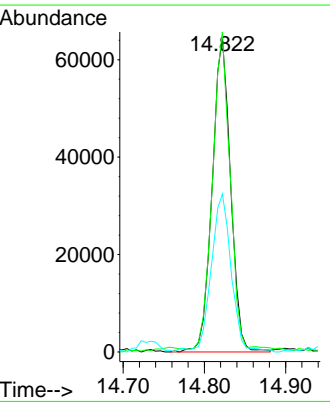
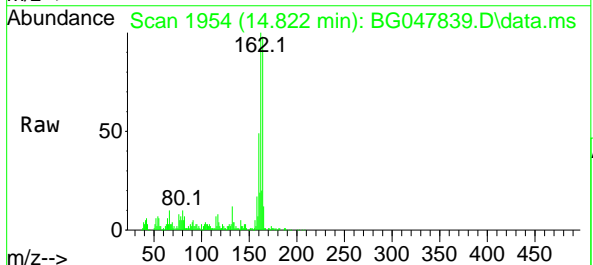
Ion	Ratio	Lower	Upper
77	100		
123	1.5	39.7	59.5#
65	73.8	10.4	15.6#

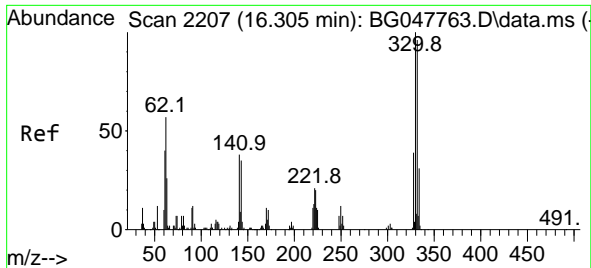


#39
 Acenaphthene-d10
 Concen: 20.00 ng
 RT: 14.822 min Scan# 1954
 Delta R.T. -0.003 min
 Lab File: BG047839.D
 Acq: 29 Dec 2020 16:58

Tgt Ion: 164 Resp: 101473

Ion	Ratio	Lower	Upper
164	100		
162	101.8	82.3	123.5
160	50.3	35.3	52.9

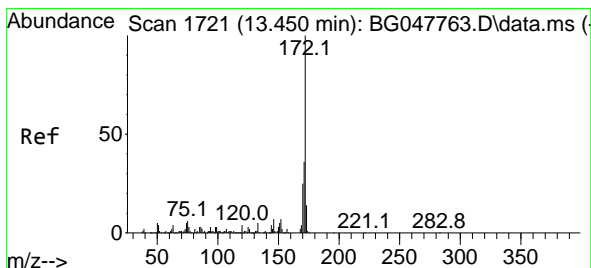
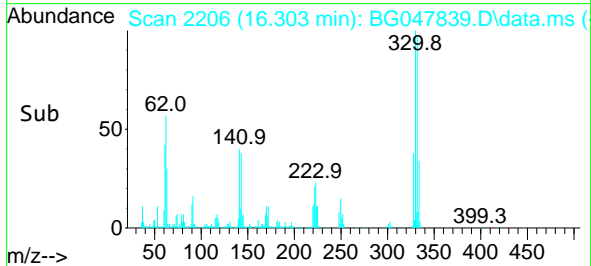
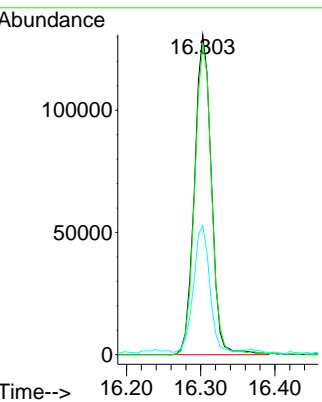
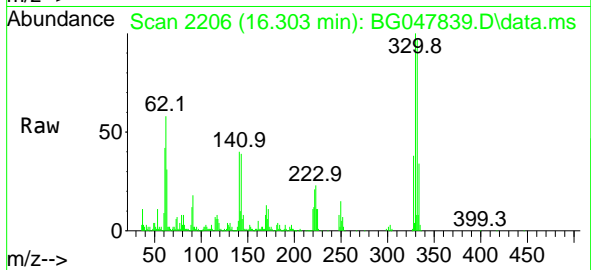




#42
 2,4,6-Tribromophenol
 Concen: 119.88 ng
 RT: 16.303 min Scan# 2206
 Delta R.T. -0.003 min
 Lab File: BG047839.D
 Acq: 29 Dec 2020 16:58

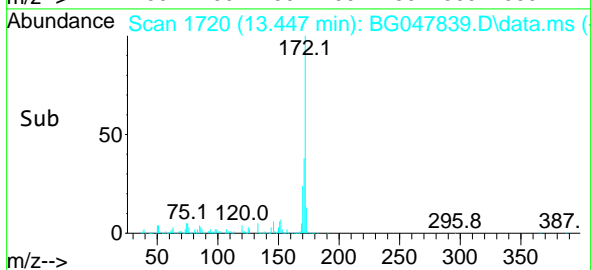
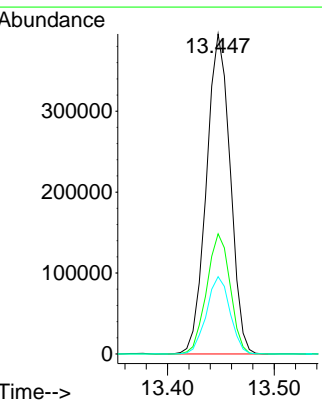
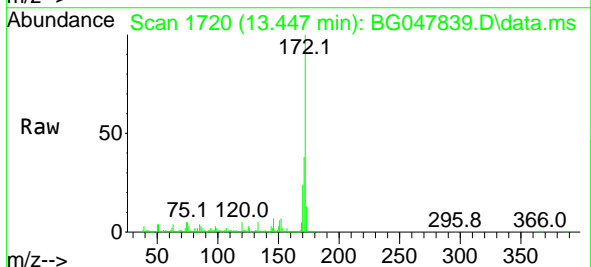
Instrument :
 BNA_G
ClientSampled :
 OWL-C1-GW

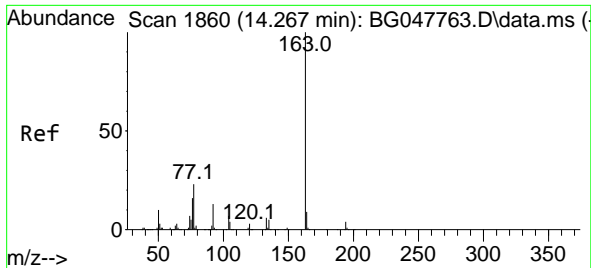
Tgt Ion	Resp	Lower	Upper
330	100		
332	97.5	76.5	114.7
141	38.8	26.0	39.0



#45
 2-Fluorobiphenyl
 Concen: 78.03 ng
 RT: 13.447 min Scan# 1720
 Delta R.T. -0.003 min
 Lab File: BG047839.D
 Acq: 29 Dec 2020 16:58

Tgt Ion	Resp	Lower	Upper
172	100		
171	37.5	31.3	46.9
170	24.1	20.8	31.2

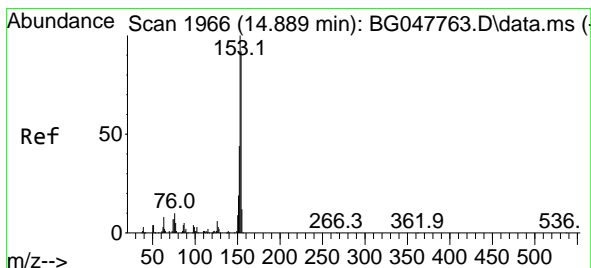
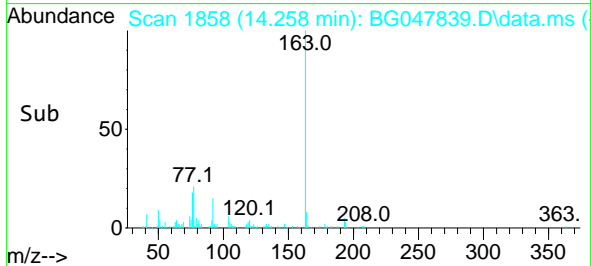
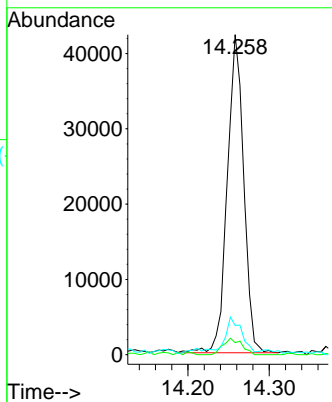
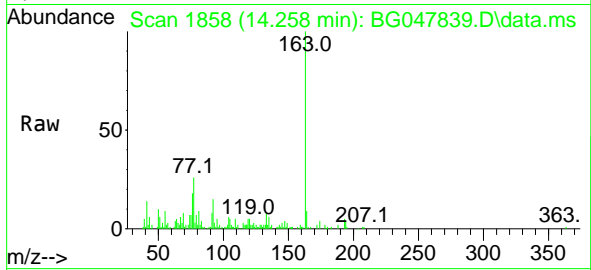




#50
 Dimethylphthalate
 Concen: 6.80 ng
 RT: 14.258 min Scan# 1858
 Delta R.T. -0.009 min
 Lab File: BG047839.D
 Acq: 29 Dec 2020 16:58

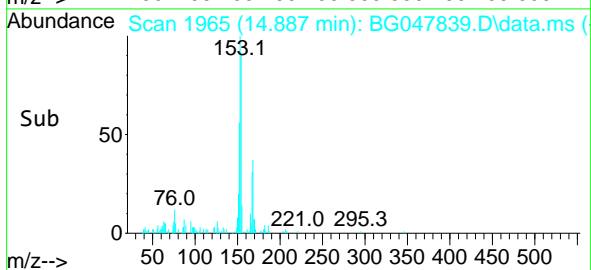
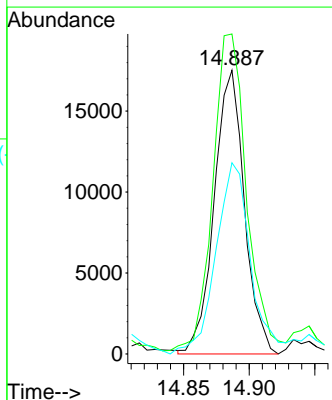
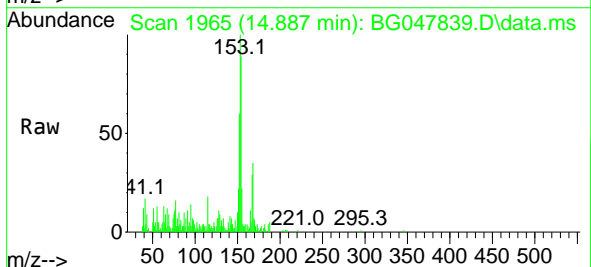
Instrument :
 BNA_G
ClientSampled :
 OWL-C1-GW

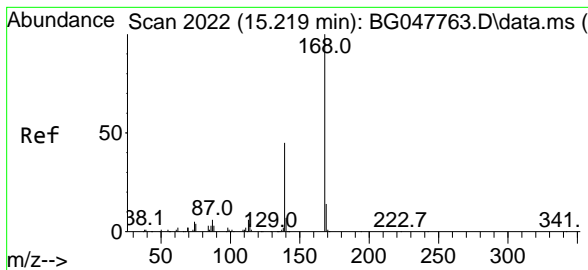
Tgt Ion	Resp	Lower	Upper
163	100		
194	3.8	3.8	5.8#
164	9.2	8.8	13.2



#52
 Acenaphthene
 Concen: 4.24 ng
 RT: 14.887 min Scan# 1965
 Delta R.T. -0.003 min
 Lab File: BG047839.D
 Acq: 29 Dec 2020 16:58

Tgt Ion	Resp	Lower	Upper
154	100		
153	112.8	90.3	135.5
152	67.4	43.8	65.8#

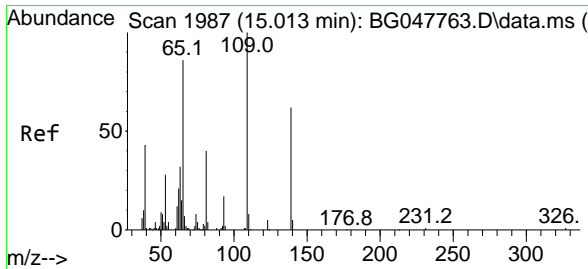
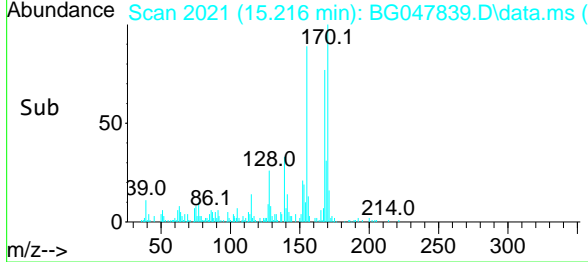
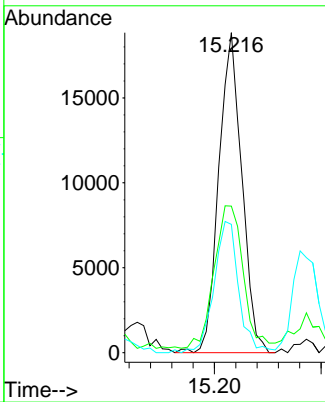
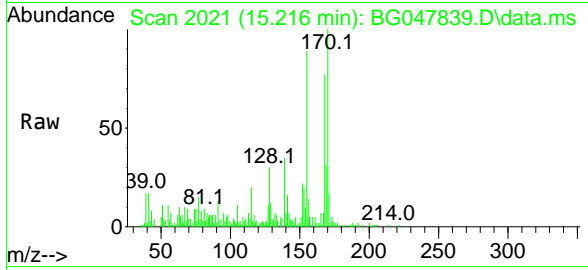




#55
 Dibenzofuran
 Concen: 2.96 ng
 RT: 15.216 min Scan# 2021
 Delta R.T. -0.003 min
 Lab File: BG047839.D
 Acq: 29 Dec 2020 16:58

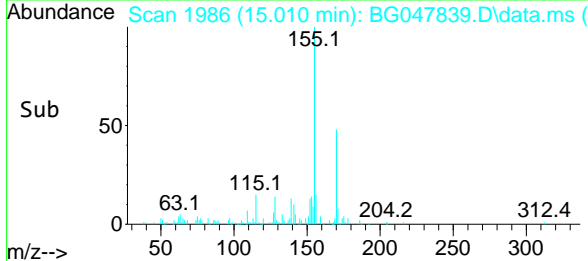
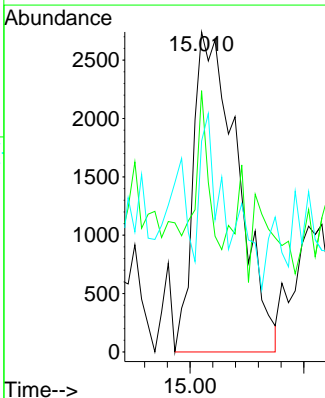
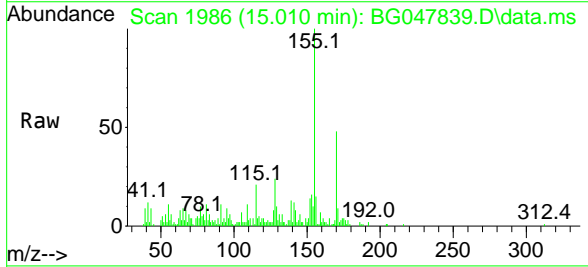
Instrument :
 BNA_G
 ClientSampled :
 OWL-C1-GW

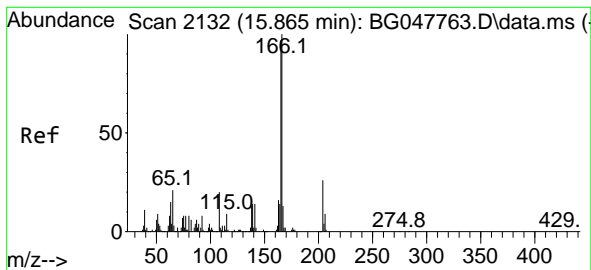
Tgt Ion	Resp	Lower	Upper
168	100		
139	45.8	28.6	43.0#
169	40.1	11.0	16.6#



#56
 4-Nitrophenol
 Concen: 5.83 ng
 RT: 15.010 min Scan# 1986
 Delta R.T. -0.003 min
 Lab File: BG047839.D
 Acq: 29 Dec 2020 16:58

Tgt Ion	Resp	Lower	Upper
139	100		
109	81.6	45.9	85.9
65	65.9	65.4	105.4

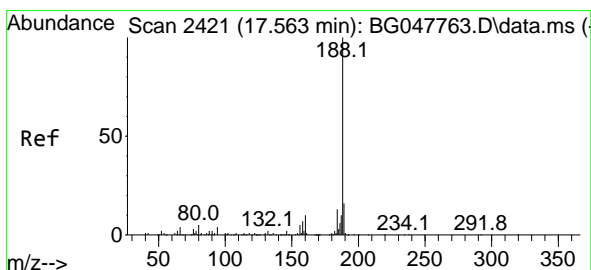
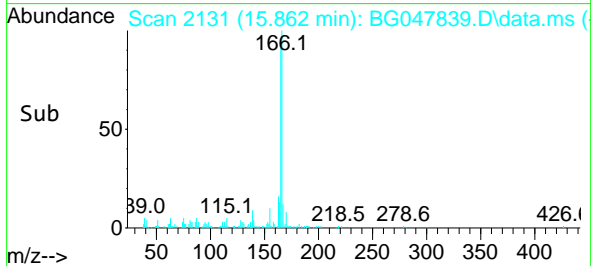
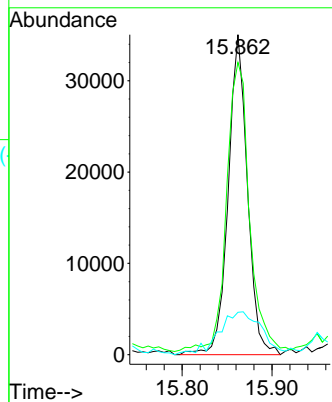
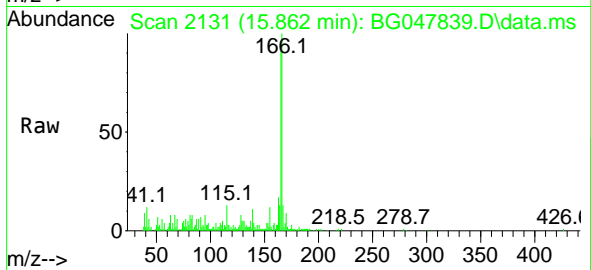




#58
 Fluorene
 Concen: 6.44 ng
 RT: 15.862 min Scan# 2131
 Delta R.T. -0.003 min
 Lab File: BG047839.D
 Acq: 29 Dec 2020 16:58

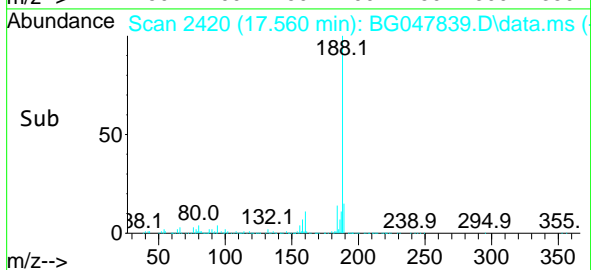
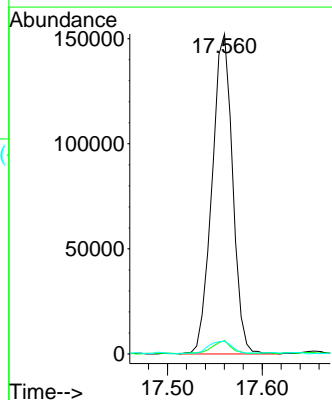
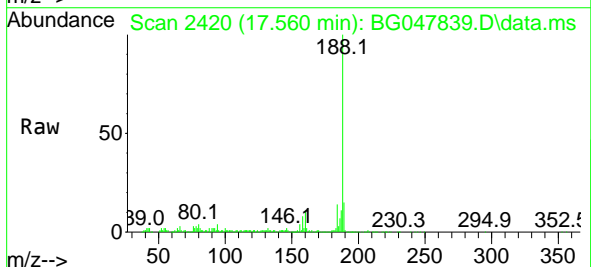
Instrument :
 BNA_G
 ClientSampleId :
 OWL-C1-GW

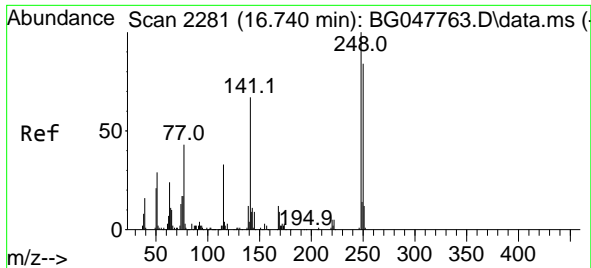
Tgt Ion:166 Resp: 52244
 Ion Ratio Lower Upper
 166 100
 165 91.4 77.2 115.8
 167 13.3 11.4 17.2



#64
 Phenanthrene-d10
 Concen: 20.00 ng
 RT: 17.560 min Scan# 2420
 Delta R.T. -0.003 min
 Lab File: BG047839.D
 Acq: 29 Dec 2020 16:58

Tgt Ion:188 Resp: 229511
 Ion Ratio Lower Upper
 188 100
 94 4.2 6.3 9.5#
 80 3.9 7.0 10.6#

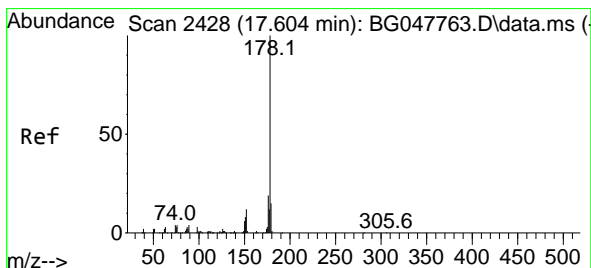
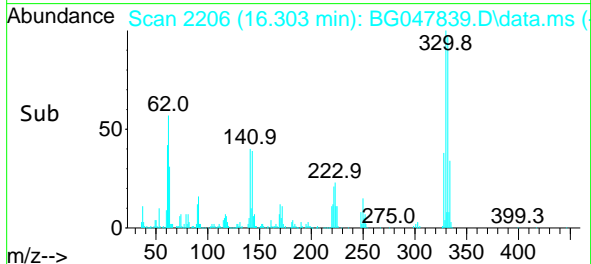
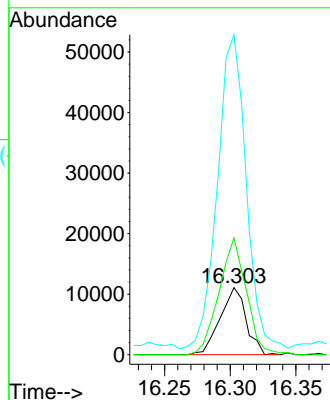
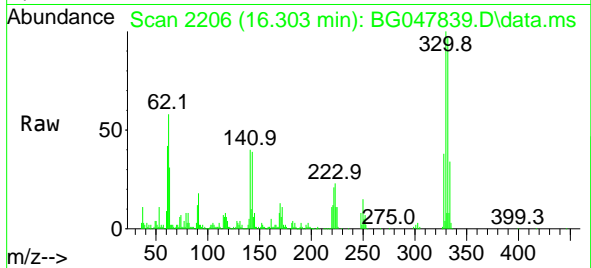




#67
 4-Bromophenyl-phenylether
 Concen: 4.94 ng
 RT: 16.303 min Scan# 2206
 Delta R.T. -0.437 min
 Lab File: BG047839.D
 Acq: 29 Dec 2020 16:58

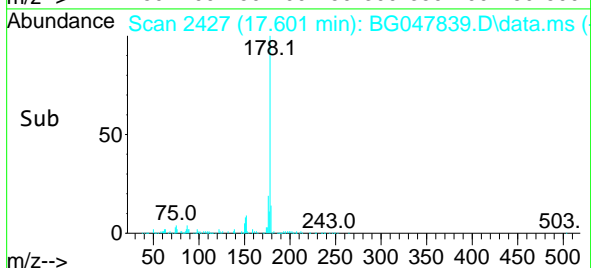
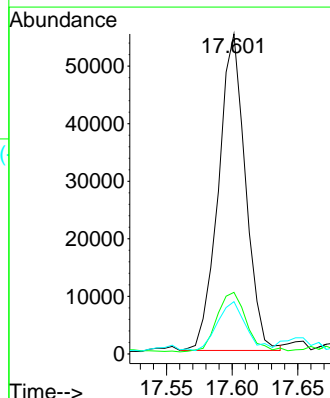
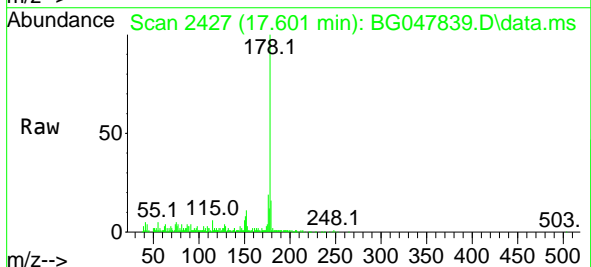
Instrument :
 BNA_G
 ClientSampled :
 OWL-C1-GW

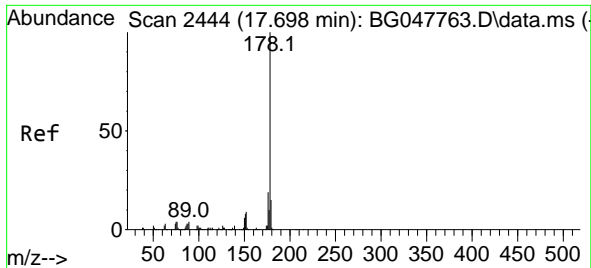
Tgt Ion	Resp	Lower	Upper
248	15238		
250	174.0	78.9	118.3#
141	476.8	46.2	69.4#



#71
 Phenanthrene
 Concen: 6.37 ng
 RT: 17.601 min Scan# 2427
 Delta R.T. -0.003 min
 Lab File: BG047839.D
 Acq: 29 Dec 2020 16:58

Tgt Ion	Resp	Lower	Upper
178	78817		
176	19.3	16.7	25.1
179	16.4	14.0	21.0



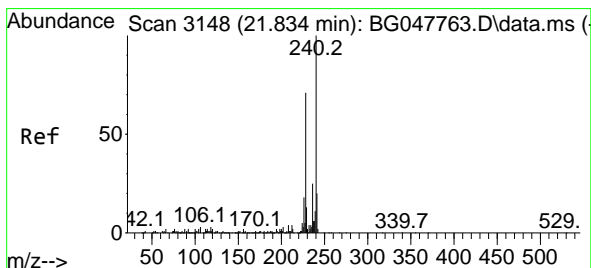
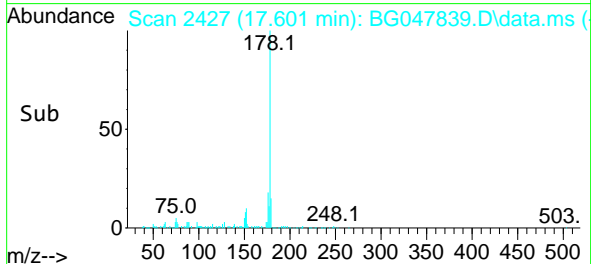
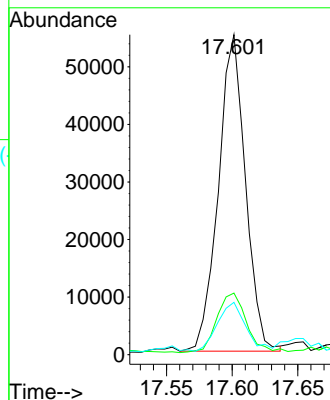
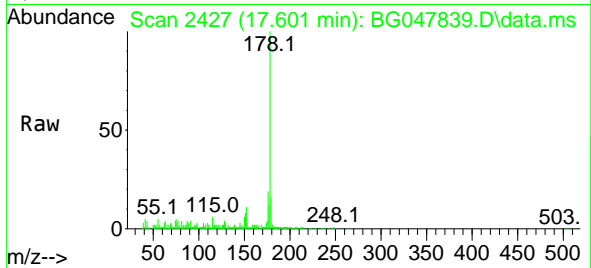


#72
 Anthracene
 Concen: 6.57 ng
 RT: 17.601 min Scan# 2427
 Delta R.T. -0.097 min
 Lab File: BG047839.D
 Acq: 29 Dec 2020 16:58

Instrument :
 BNA_G
 ClientSampleId :
 OWL-C1-GW

Tgt Ion:178 Resp: 78817

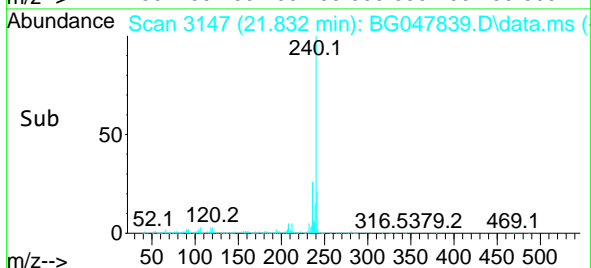
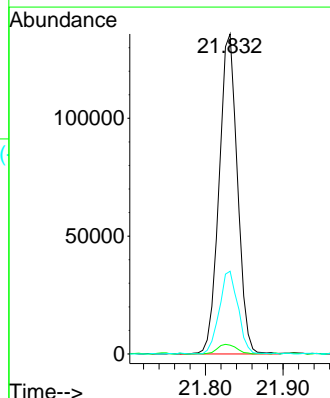
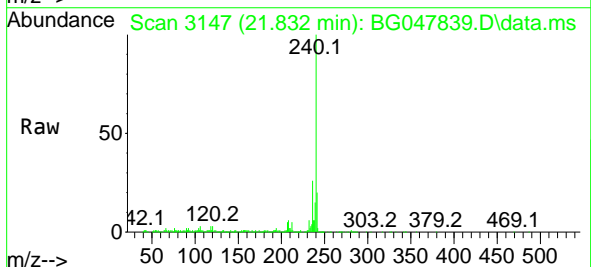
Ion	Ratio	Lower	Upper
178	100		
176	19.3	16.4	24.6
179	16.4	13.8	20.6

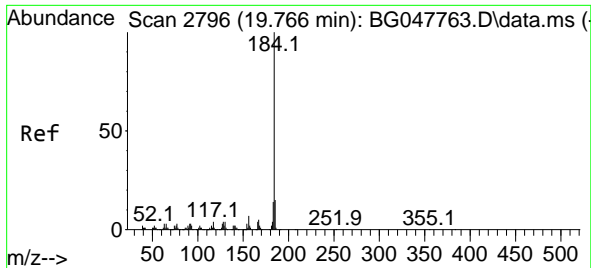


#76
 Chrysene-d12
 Concen: 20.00 ng
 RT: 21.832 min Scan# 3147
 Delta R.T. -0.003 min
 Lab File: BG047839.D
 Acq: 29 Dec 2020 16:58

Tgt Ion:240 Resp: 223124

Ion	Ratio	Lower	Upper
240	100		
120	2.7	6.2	9.4#
236	25.8	20.5	30.7



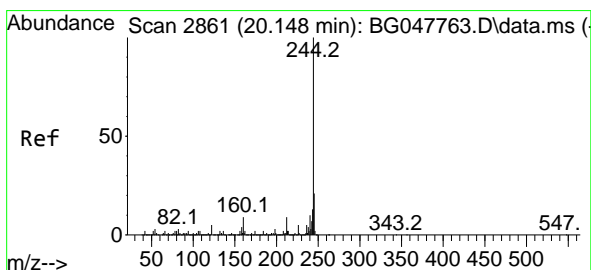
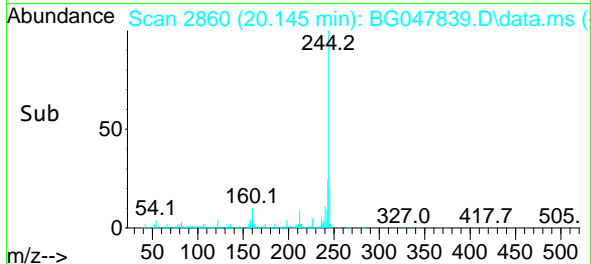
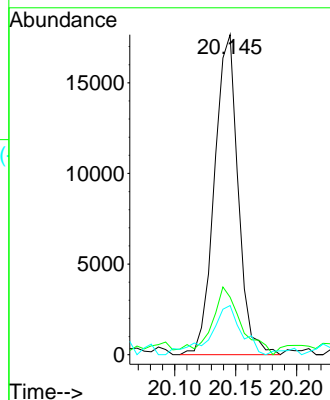
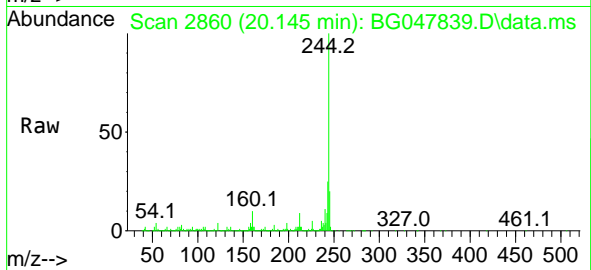


#77
Benzidine
Concen: 3.97 ng
RT: 20.145 min Scan# 2860
Delta R.T. 0.379 min
Lab File: BG047839.D
Acq: 29 Dec 2020 16:58

Instrument :
BNA_G
ClientSampleId :
OWL-C1-GW

Tgt Ion:184 Resp: 23799

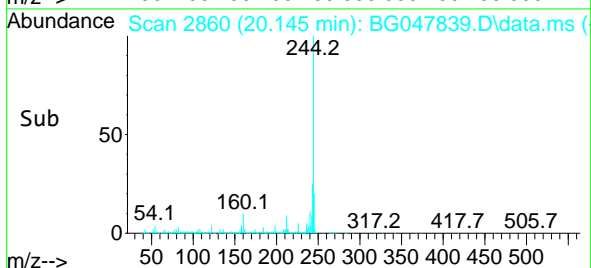
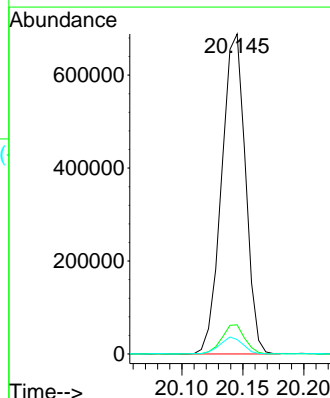
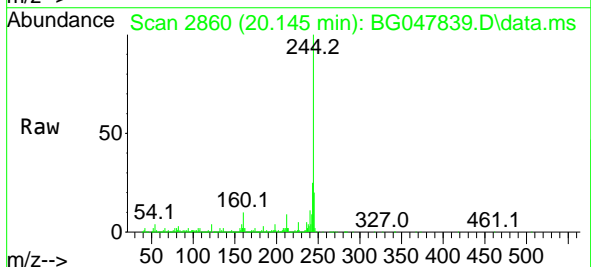
Ion	Ratio	Lower	Upper
184	100		
185	17.9	12.4	18.6
183	15.4	10.6	15.8

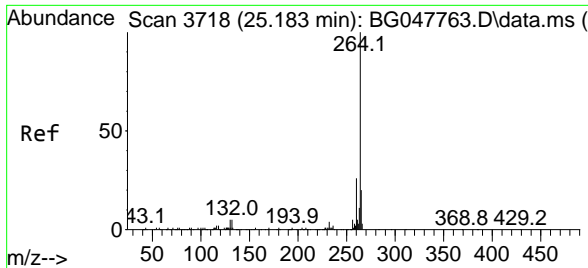


#79
Terphenyl-d14
Concen: 68.95 ng
RT: 20.145 min Scan# 2860
Delta R.T. -0.003 min
Lab File: BG047839.D
Acq: 29 Dec 2020 16:58

Tgt Ion:244 Resp: 933598

Ion	Ratio	Lower	Upper
244	100		
212	9.1	6.7	10.1
122	4.5	7.8	11.6#





#86
 Perylene-d12
 Concen: 20.00 ng
 RT: 25.181 min Scan# 3717
 Delta R.T. -0.003 min
 Lab File: BG047839.D
 Acq: 29 Dec 2020 16:58

Instrument :
 BNA_G
ClientSampled :
 OWL-C1-GW

Tgt Ion:264 Resp: 247124

Ion	Ratio	Lower	Upper
264	100		
260	22.2	18.8	28.2
265	20.2	17.8	26.8

