

Data Path : Z:\svoasrv\HPCHEM1\BNA_G\Data\BG062622\
 Data File : BG054086.D
 Acq On : 26 Jun 2022 23:47
 Operator : CG/JU
 Sample : N3454-05 2X
 Misc :
 ALS Vial : 16 Sample Multiplier: 1

Instrument :
 BNA_G
 ClientSampleId :
 WC-15-1-2

Manual Integrations
 APPROVED

Reviewed By : Christian Giraldo 06/28/2022
 Supervised By : Jagrut Upadhyay 06/28/2022

Quant Time: Jun 27 00:34:06 2022
 Quant Method : Z:\svoasrv\HPCHEM1\BNA_G\Methods\8270-BG061322.M
 Quant Title : ASP BNA STANDARDS FOR 5 POINT CALIBRATION
 QLast Update : Mon Jun 27 00:27:54 2022
 Response via : Initial Calibration

Compound	R.T.	QIon	Response	Conc	Units	Dev(Min)	
Internal Standards							
1) 1,4-Dichlorobenzene-d4	8.076	152	37216	20.000	ng	0.00	
21) Naphthalene-d8	10.885	136	143131	20.000	ng	0.00	
39) Acenaphthene-d10	14.704	164	92313	20.000	ng	0.00	
64) Phenanthrene-d10	17.447	188	186593	20.000	ng	# 0.00	
76) Chrysene-d12	21.754	240	179857	20.000	ng	# 0.04	
86) Perylene-d12	25.080	264	189317	20.000	ng	# 0.12	
System Monitoring Compounds							
5) 2-Fluorophenol	5.638	112	54294	27.893	ng	0.00	
7) Phenol-d6	7.230	99	73967	28.011	ng	0.00	
23) Nitrobenzene-d5	9.234	82	50535	19.841	ng	0.00	
42) 2,4,6-Tribromophenol	16.184	330	33142	22.345	ng	0.00	
45) 2-Fluorobiphenyl	13.323	172	129771	20.442	ng	0.00	
79) Terphenyl-d14	20.062	244	186776	20.916	ng	0.02	
Target Compounds							
37) 2-Methylnaphthalene	12.536	142	14004	2.620	ng		Qvalue 95
38) 1-Methylnaphthalene	12.753	142	24700	4.745	ng	#	99
71) Phenanthrene	17.489	178	108332	11.300	ng	#	87
75) Fluoranthene	19.504	202	40526m	3.220	ng		
78) Pyrene	19.868	202	152081	14.000	ng	#	83
81) Benzo(a)anthracene	21.737	228	152610	13.105	ng	#	60
83) Chrysene	21.801	228	281832	25.389	ng	#	69
87) Indeno(1,2,3-cd)pyrene	28.858	276	48164	3.371	ng	#	67
88) Benzo(b)fluoranthene	24.028	252	82155m	7.137	ng		
90) Benzo(a)pyrene	24.927	252	115338	11.876	ng	#	44
91) Dibenzo(a,h)anthracene	28.887	278	58011	4.910	ng	#	32
92) Benzo(g,h,i)perylene	30.039	276	97581	8.370	ng	#	77

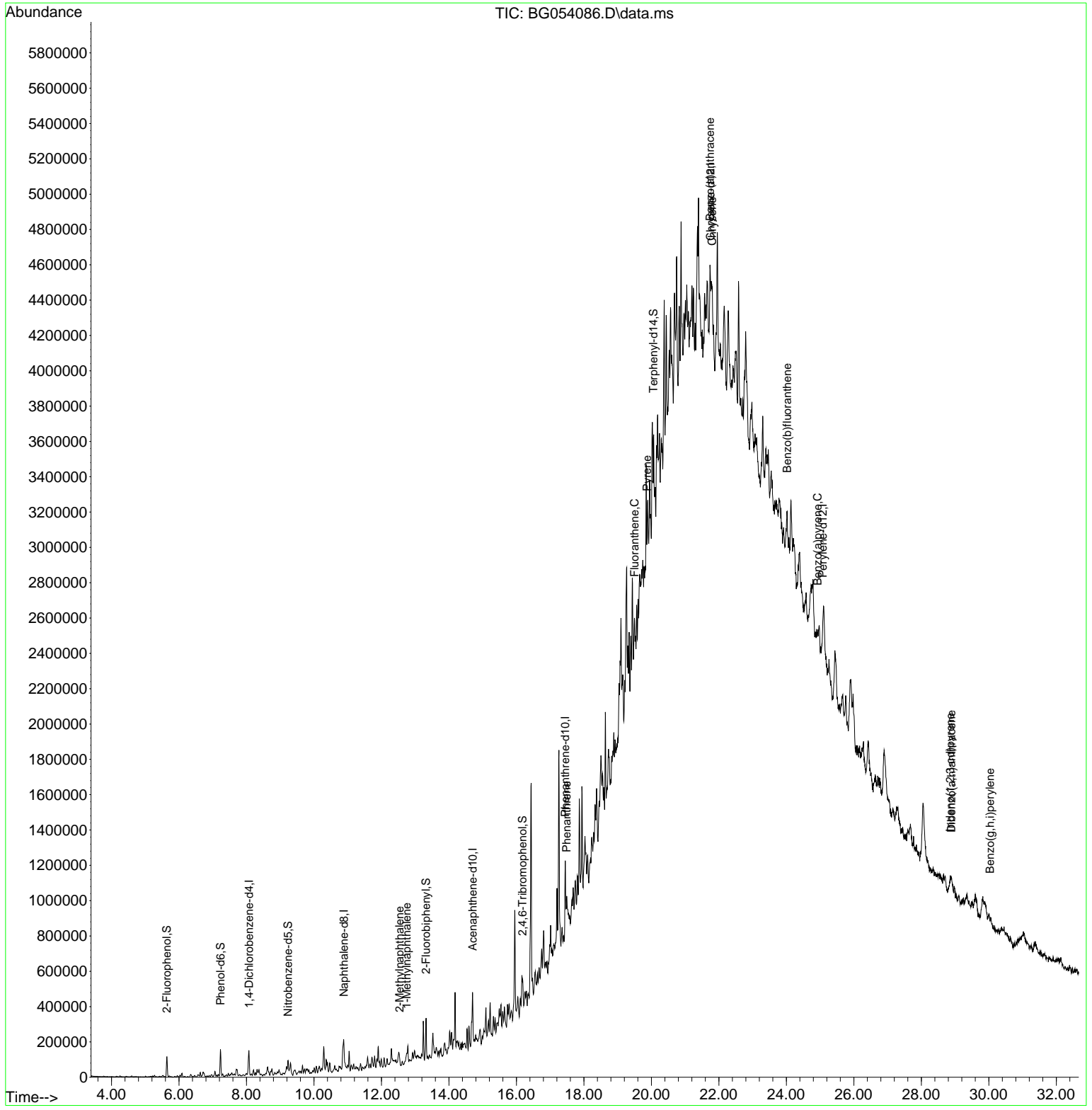
(#) = qualifier out of range (m) = manual integration (+) = signals summed

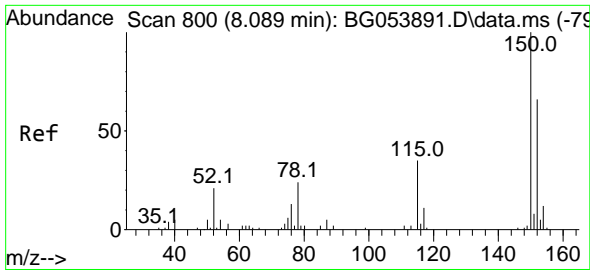
Data Path : Z:\svoasrv\HPCHEM1\BNA_G\Data\BG062622\
 Data File : BG054086.D
 Acq On : 26 Jun 2022 23:47
 Operator : CG/JU
 Sample : N3454-05 2X
 Misc :
 ALS Vial : 16 Sample Multiplier: 1

Instrument :
 BNA_G
ClientSampleId :
 WC-15-1-2

Quant Time: Jun 27 00:34:06 2022
 Quant Method : Z:\svoasrv\HPCHEM1\BNA_G\Methods\8270-BG061322.M
 Quant Title : ASP BNA STANDARDS FOR 5 POINT CALIBRATION
 QLast Update : Mon Jun 27 00:27:54 2022
 Response via : Initial Calibration

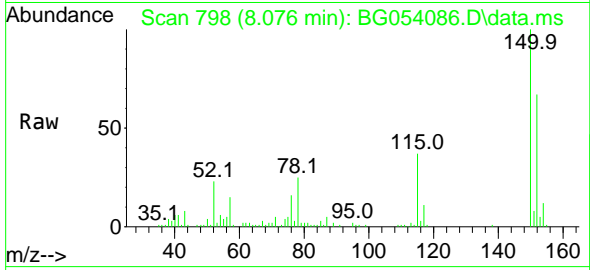
Manual Integrations
APPROVED
 Reviewed By :Christian Giraldo 06/28/2022
 Supervised By :Jagrut Upadhyay 06/28/2022





#1
 1,4-Dichlorobenzene-d4
 Concen: 20.000 ng
 RT: 8.076 min Scan# 79
 Delta R.T. 0.006 min
 Lab File: BG054086.D
 Acq: 26 Jun 2022 23:47

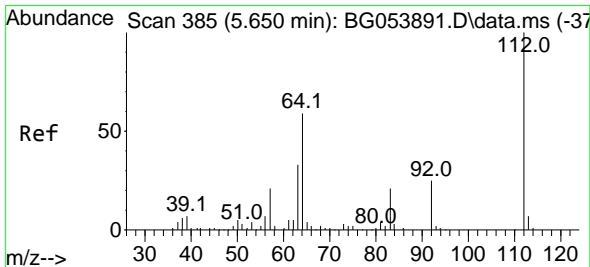
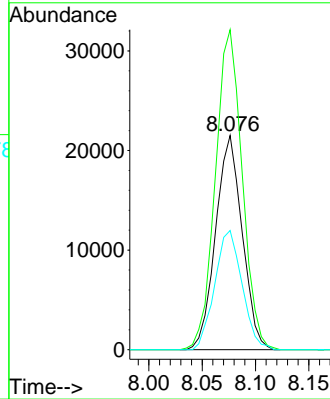
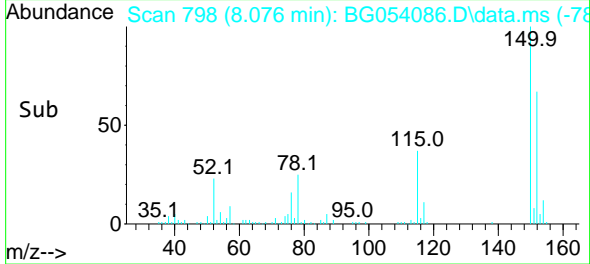
Instrument :
 BNA_G
 ClientSampled :
 WC-15-1-2



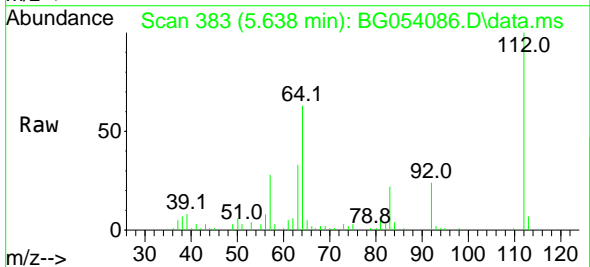
Tgt Ion:152 Resp: 37210
 Ion Ratio Lower Upper
 152 100
 150 149.4 131.6 197.4
 115 55.7 50.9 76.3

Manual Integrations
 APPROVED

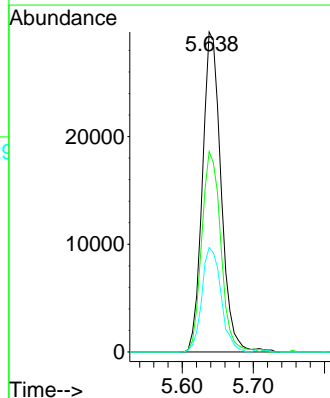
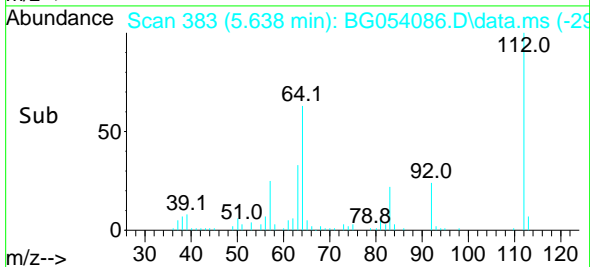
Reviewed By :Christian Giraldo 06/28/2022
 Supervised By :Jagrut Upadhyay 06/28/2022

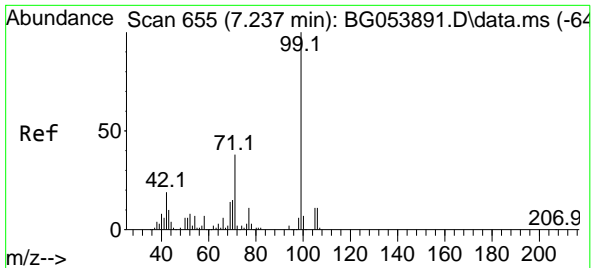


#5
 2-Fluorophenol
 Concen: 27.893 ng
 RT: 5.638 min Scan# 383
 Delta R.T. -0.000 min
 Lab File: BG054086.D
 Acq: 26 Jun 2022 23:47



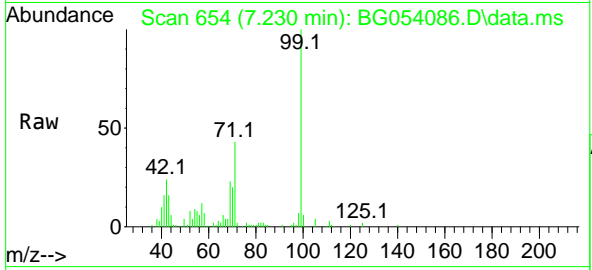
Tgt Ion:112 Resp: 54294
 Ion Ratio Lower Upper
 112 100
 64 62.6 55.1 82.7
 63 32.6 30.4 45.6





#7
 Phenol-d6
 Concen: 28.011 ng
 RT: 7.230 min Scan# 61
 Delta R.T. -0.000 min
 Lab File: BG054086.D
 Acq: 26 Jun 2022 23:47

Instrument : BNA_G
 Client Sample Id : WC-15-1-2

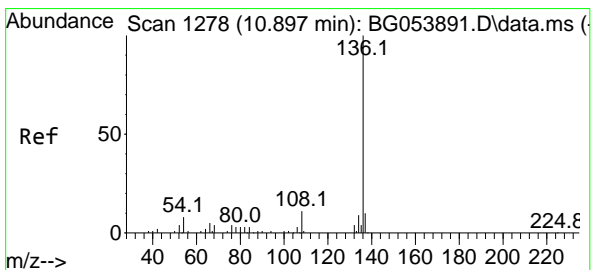
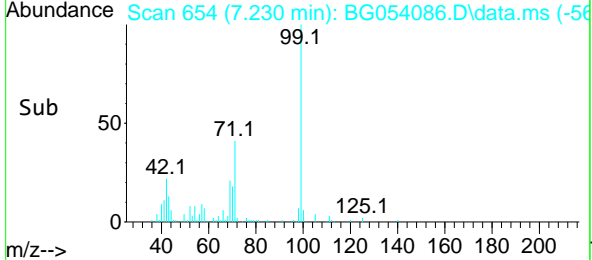
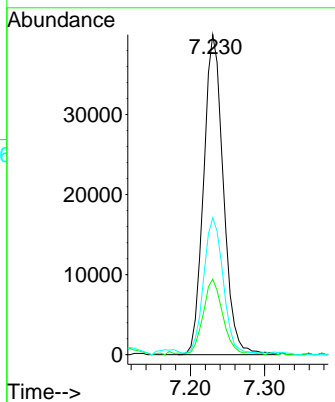


Tgt Ion: 99 Resp: 7396

Ion	Ratio	Lower	Upper
99	100		
42	23.6	17.0	25.6
71	42.7	33.8	50.8

Manual Integrations
APPROVED

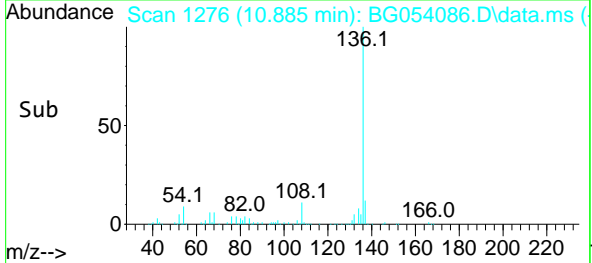
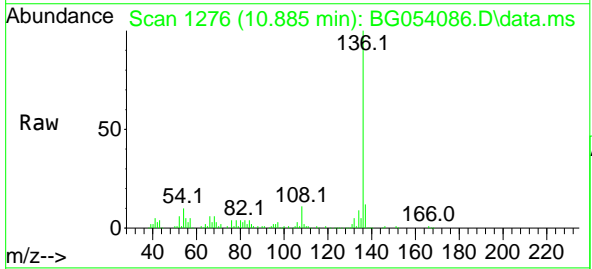
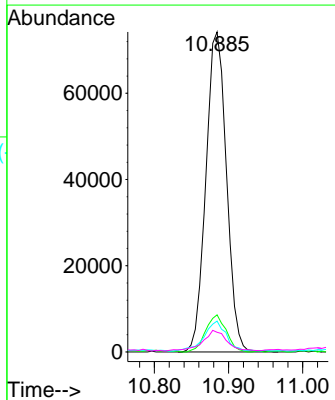
Reviewed By : Christian Giraldo 06/28/2022
 Supervised By : Jagrut Upadhyay 06/28/2022

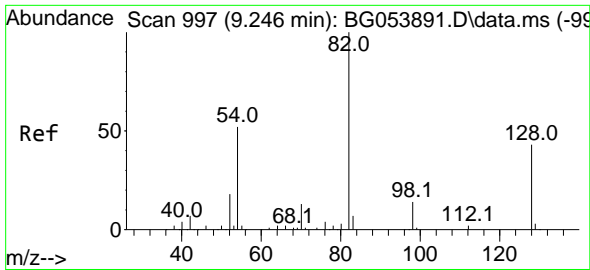


#21
 Naphthalene-d8
 Concen: 20.000 ng
 RT: 10.885 min Scan# 1276
 Delta R.T. 0.006 min
 Lab File: BG054086.D
 Acq: 26 Jun 2022 23:47

Tgt Ion: 136 Resp: 143131

Ion	Ratio	Lower	Upper
136	100		
137	11.6	8.5	12.7
54	9.7	7.4	11.2
68	6.1	4.9	7.3





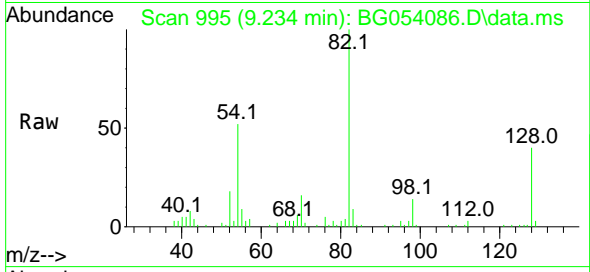
#23
 Nitrobenzene-d5
 Concen: 19.841 ng
 RT: 9.234 min Scan# 995
 Delta R.T. -0.000 min
 Lab File: BG054086.D
 Acq: 26 Jun 2022 23:47

Instrument :

BNA_G

ClientSampleId :

WC-15-1-2

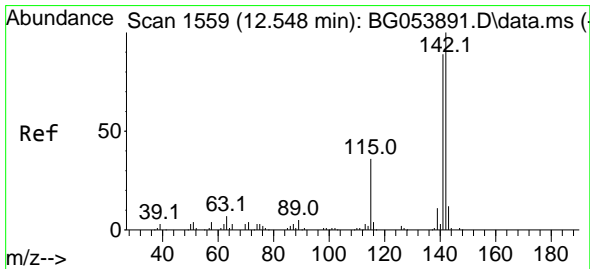
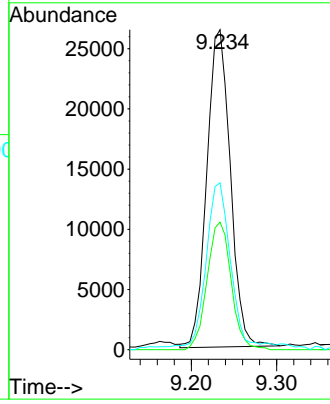
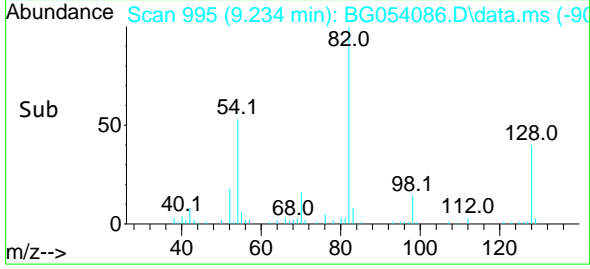


Tgt Ion: 82 Resp: 50538
 Ion Ratio Lower Upper
 82 100
 128 39.8 27.9 41.9
 54 52.2 41.2 61.8

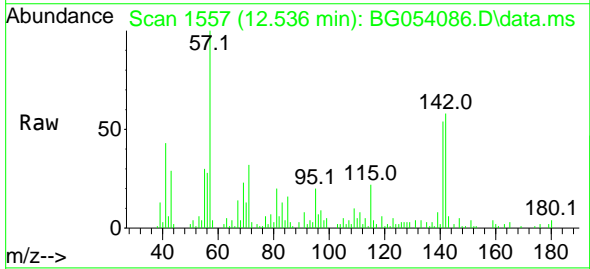
Manual Integrations

APPROVED

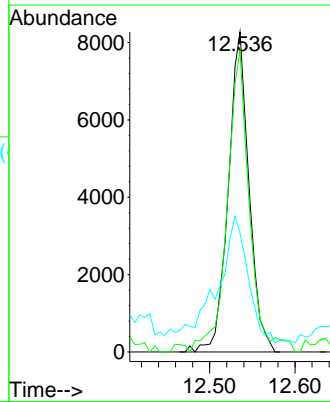
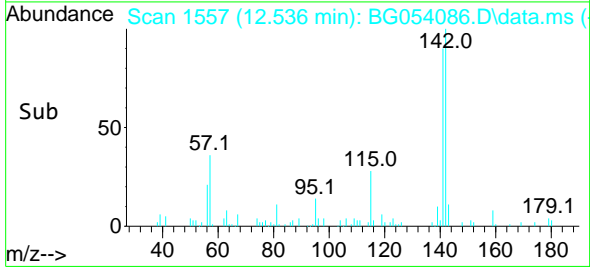
Reviewed By :Christian Giraldo 06/28/2022
 Supervised By :Jagrut Upadhyay 06/28/2022

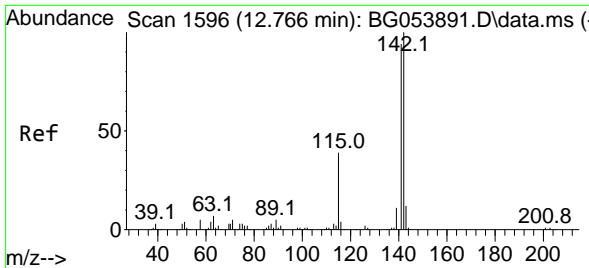


#37
 2-Methylnaphthalene
 Concen: 2.620 ng
 RT: 12.536 min Scan# 1557
 Delta R.T. 0.006 min
 Lab File: BG054086.D
 Acq: 26 Jun 2022 23:47



Tgt Ion:142 Resp: 14004
 Ion Ratio Lower Upper
 142 100
 141 94.0 72.3 108.5
 115 37.1 33.7 50.5





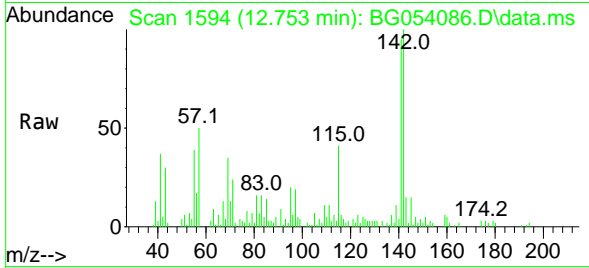
#38
 1-Methylnaphthalene
 Concen: 4.745 ng
 RT: 12.753 min Scan# 1594
 Delta R.T. 0.006 min
 Lab File: BG054086.D
 Acq: 26 Jun 2022 23:47

Instrument :

BNA_G

ClientSampleId :

WC-15-1-2

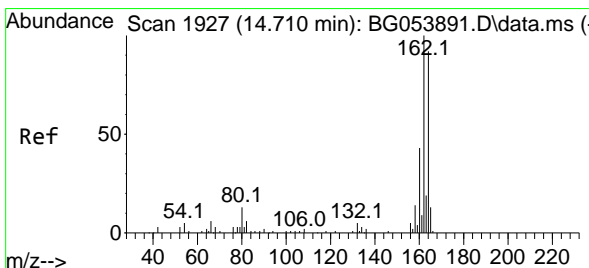
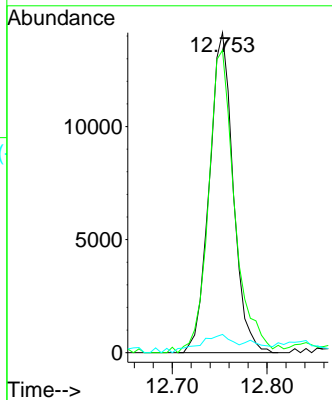
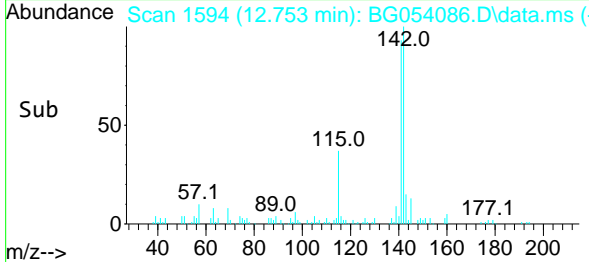


Tgt Ion:142 Resp: 24700
 Ion Ratio Lower Upper
 142 100
 141 94.5 76.4 114.6
 116 5.7 3.3 4.9

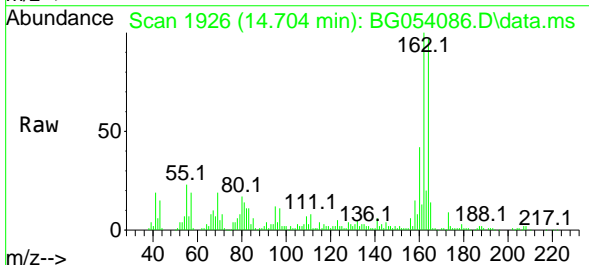
Manual Integrations

APPROVED

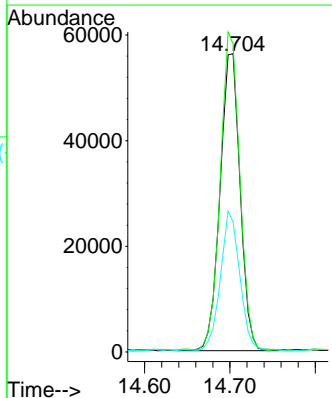
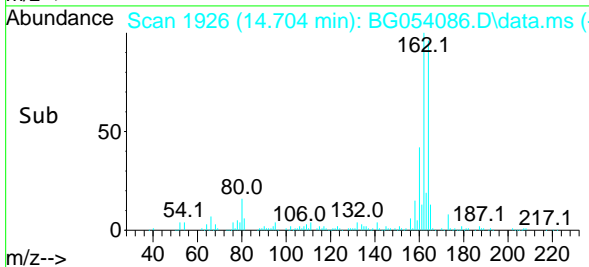
Reviewed By :Christian Giraldo 06/28/2022
 Supervised By :Jagrut Upadhyay 06/28/2022

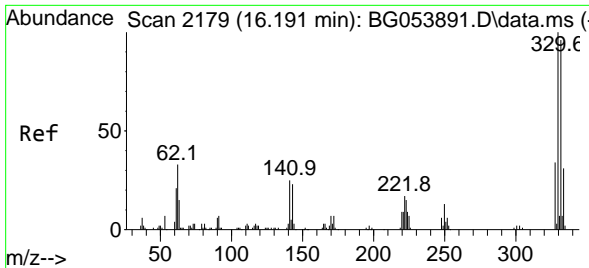


#39
 Acenaphthene-d10
 Concen: 20.000 ng
 RT: 14.704 min Scan# 1926
 Delta R.T. 0.006 min
 Lab File: BG054086.D
 Acq: 26 Jun 2022 23:47



Tgt Ion:164 Resp: 92313
 Ion Ratio Lower Upper
 164 100
 162 103.3 82.3 123.5
 160 43.6 34.2 51.2





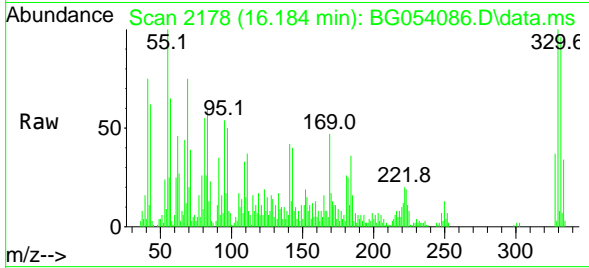
#42
 2,4,6-Tribromophenol
 Concen: 22.345 ng
 RT: 16.184 min Scan# 2178
 Delta R.T. -0.000 min
 Lab File: BG054086.D
 Acq: 26 Jun 2022 23:47

Instrument :

BNA_G

ClientSampleID :

WC-15-1-2

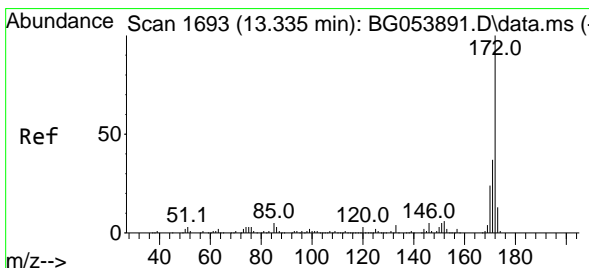
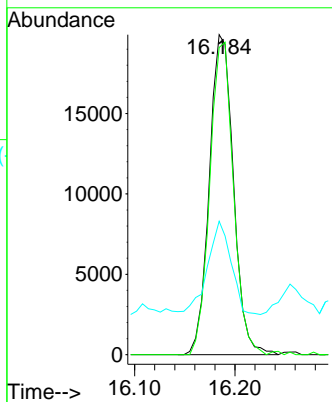
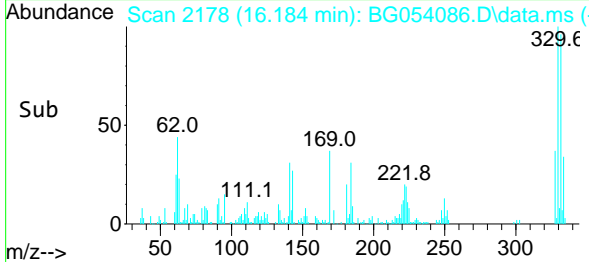


Tgt Ion: 330 Resp: 3314
 Ion Ratio Lower Upper
 330 100
 332 95.6 76.0 114.0
 141 28.9 27.1 40.7

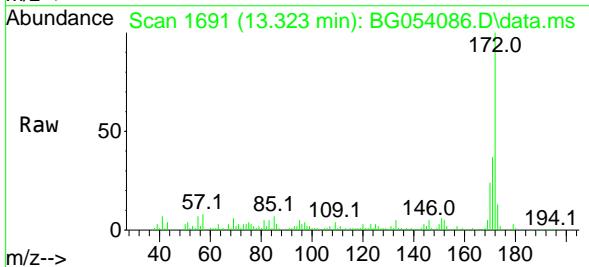
Manual Integrations

APPROVED

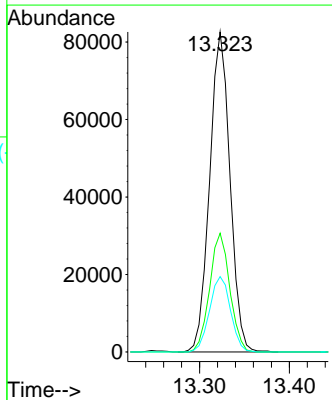
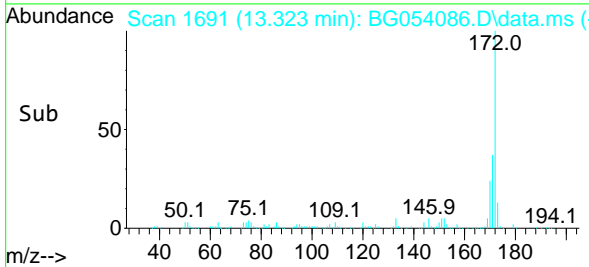
Reviewed By : Christian Giraldo 06/28/2022
 Supervised By : Jagrut Upadhyay 06/28/2022

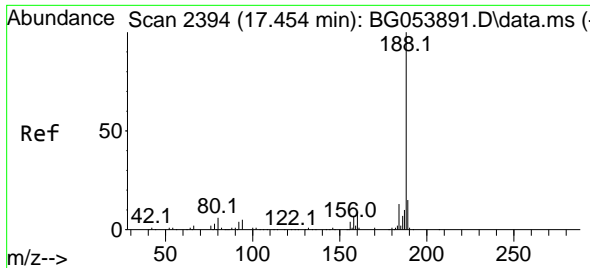


#45
 2-Fluorobiphenyl
 Concen: 20.442 ng
 RT: 13.323 min Scan# 1691
 Delta R.T. -0.000 min
 Lab File: BG054086.D
 Acq: 26 Jun 2022 23:47



Tgt Ion: 172 Resp: 129771
 Ion Ratio Lower Upper
 172 100
 171 37.1 28.5 42.7
 170 23.5 18.9 28.3





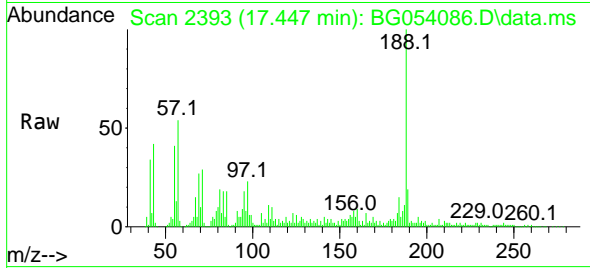
#64
 Phenanthrene-d10
 Concen: 20.000 ng
 RT: 17.447 min Scan# 21
 Delta R.T. 0.006 min
 Lab File: BG054086.D
 Acq: 26 Jun 2022 23:47

Instrument :

BNA_G

ClientSampleId :

WC-15-1-2

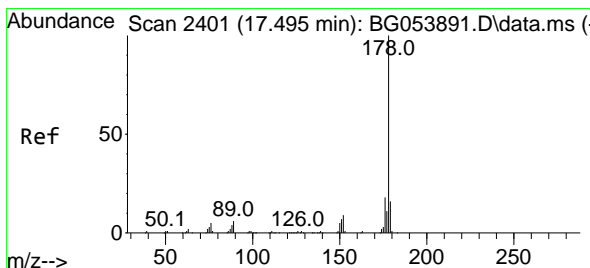
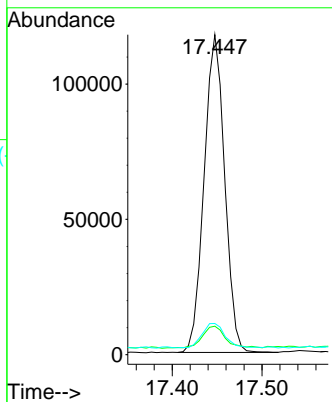
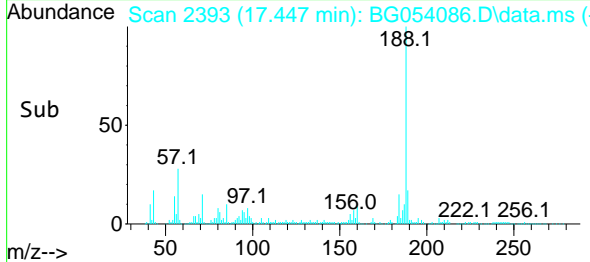


Tgt Ion:188 Resp: 18659
 Ion Ratio Lower Upper
 188 100
 94 8.9 5.4 8.0#
 80 9.7 6.8 10.2

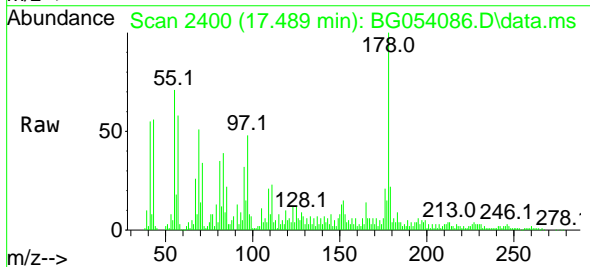
Manual Integrations

APPROVED

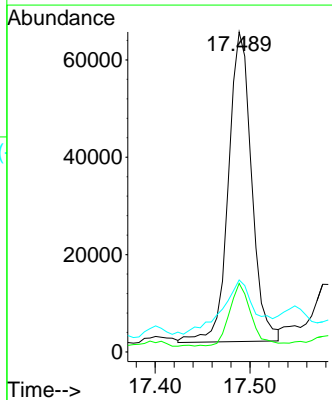
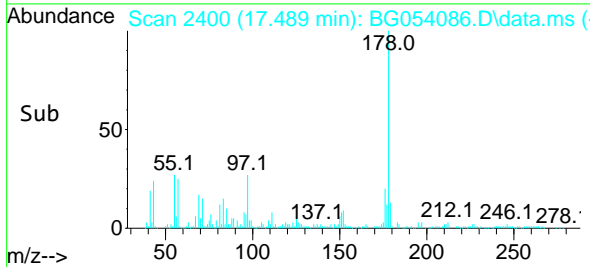
Reviewed By :Christian Giraldo 06/28/2022
 Supervised By :Jagrut Upadhyay 06/28/2022

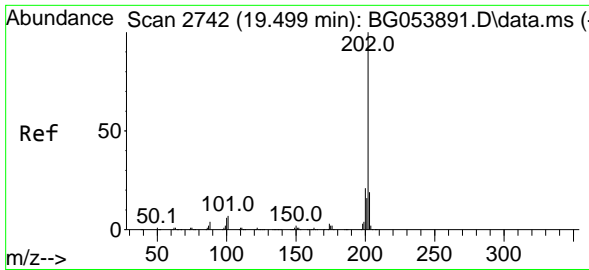


#71
 Phenanthrene
 Concen: 11.300 ng
 RT: 17.489 min Scan# 2400
 Delta R.T. 0.006 min
 Lab File: BG054086.D
 Acq: 26 Jun 2022 23:47



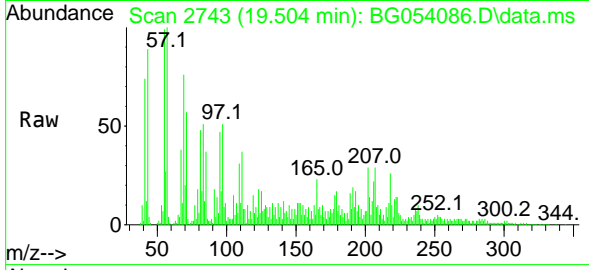
Tgt Ion:178 Resp: 108332
 Ion Ratio Lower Upper
 178 100
 176 21.4 14.1 21.1#
 179 22.5 12.1 18.1#





#75
 Fluoranthene
 Concen: 3.220 ng m
 RT: 19.504 min Scan# 21
 Delta R.T. 0.012 min
 Lab File: BG054086.D
 Acq: 26 Jun 2022 23:47

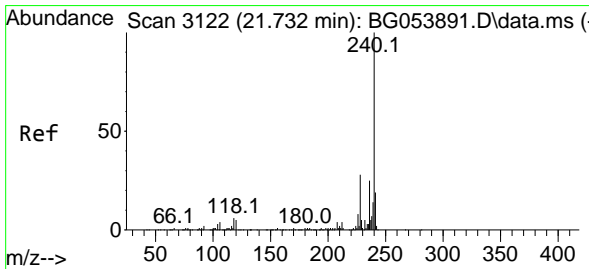
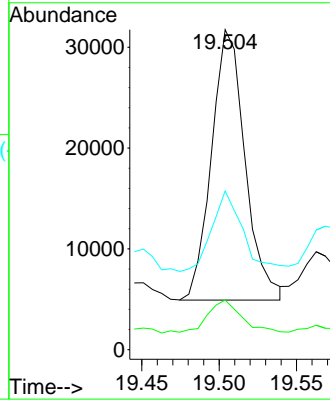
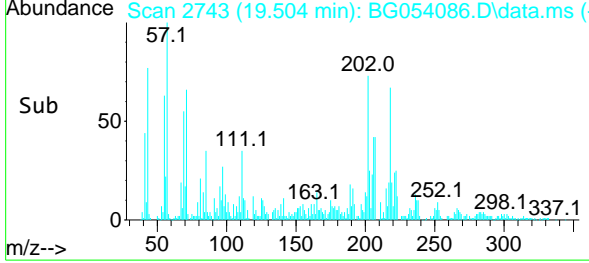
Instrument :
 BNA_G
 ClientSampleId :
 WC-15-1-2



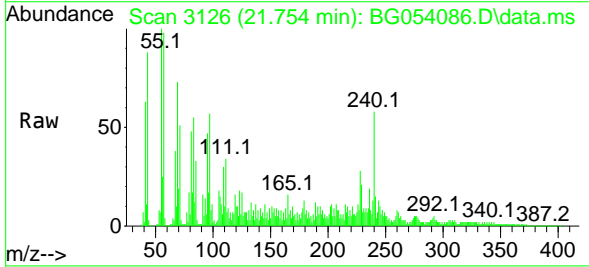
Tgt Ion:202 Resp: 40520
 Ion Ratio Lower Upper
 202 100
 101 15.5 0.0 26.9
 203 49.6 0.0 37.2

Manual Integrations
 APPROVED

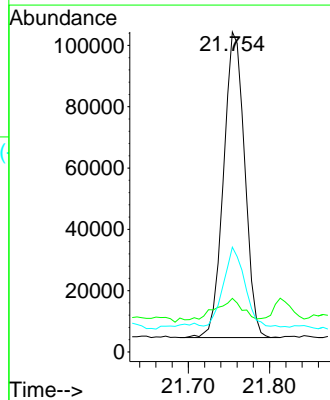
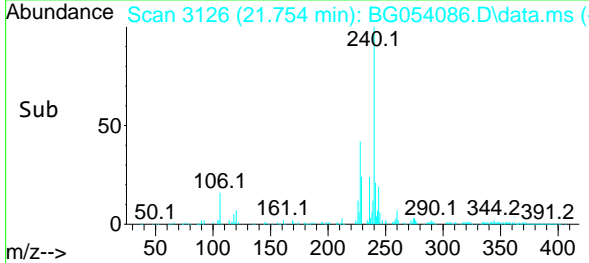
Reviewed By :Christian Giraldo 06/28/2022
 Supervised By :Jagrut Upadhyay 06/28/2022

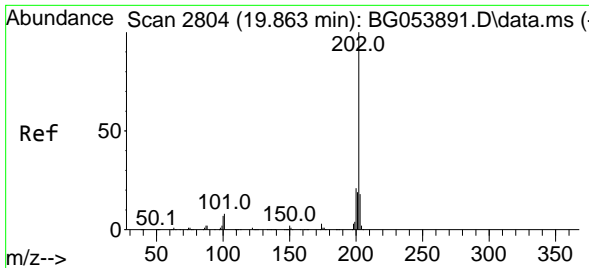


#76
 Chrysene-d12
 Concen: 20.000 ng
 RT: 21.754 min Scan# 3126
 Delta R.T. 0.035 min
 Lab File: BG054086.D
 Acq: 26 Jun 2022 23:47



Tgt Ion:240 Resp: 179857
 Ion Ratio Lower Upper
 240 100
 120 16.7 4.6 7.0#
 236 32.7 20.2 30.4#





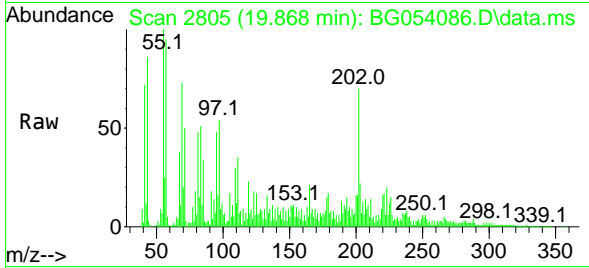
#78
 Pyrene
 Concen: 14.000 ng
 RT: 19.868 min Scan# 2805
 Delta R.T. 0.017 min
 Lab File: BG054086.D
 Acq: 26 Jun 2022 23:47

Instrument :

BNA_G

ClientSampled :

WC-15-1-2

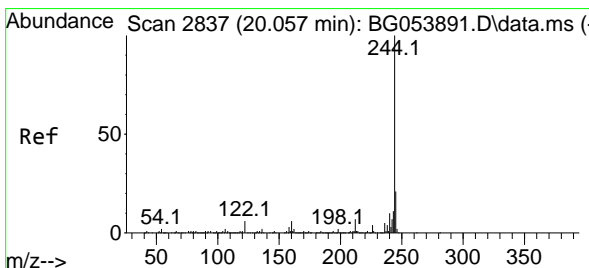
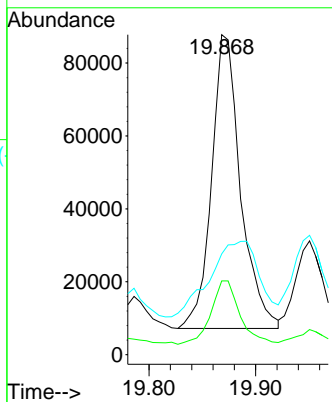
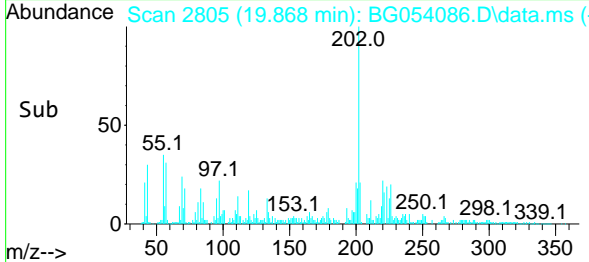


Tgt Ion:202 Resp: 15208
 Ion Ratio Lower Upper
 202 100
 200 23.0 16.6 24.8
 203 31.5 14.6 21.8

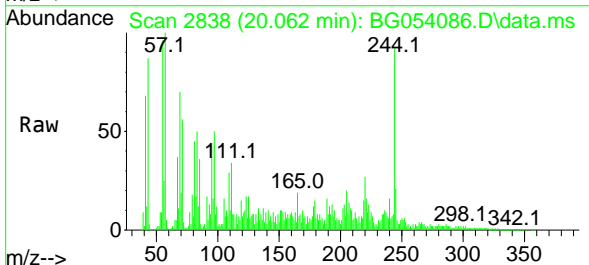
Manual Integrations

APPROVED

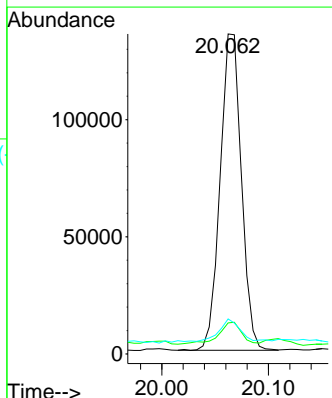
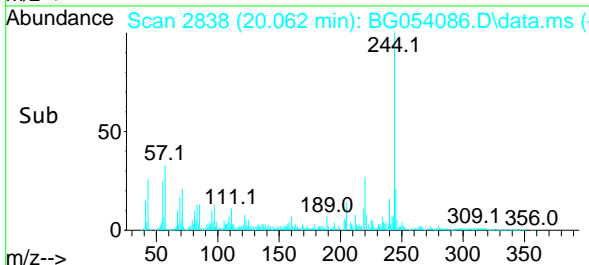
Reviewed By :Christian Giraldo 06/28/2022
 Supervised By :Jagrut Upadhyay 06/28/2022

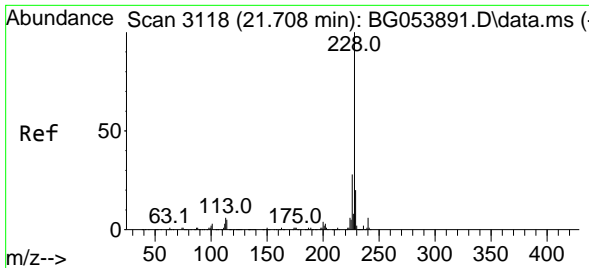


#79
 Terphenyl-d14
 Concen: 20.916 ng
 RT: 20.062 min Scan# 2838
 Delta R.T. 0.017 min
 Lab File: BG054086.D
 Acq: 26 Jun 2022 23:47



Tgt Ion:244 Resp: 186776
 Ion Ratio Lower Upper
 244 100
 212 9.7 6.5 9.7
 122 11.0 5.0 7.4





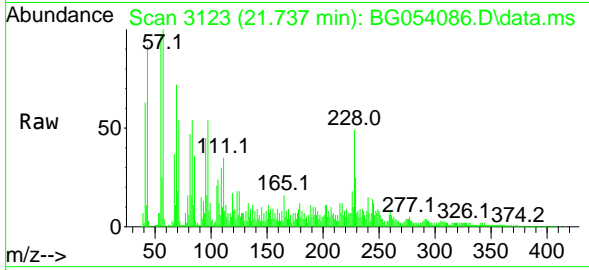
#81
 Benzo(a)anthracene
 Concen: 13.105 ng
 RT: 21.737 min Scan# 3112
 Delta R.T. 0.041 min
 Lab File: BG054086.D
 Acq: 26 Jun 2022 23:47

Instrument :

BNA_G

ClientSampleId :

WC-15-1-2

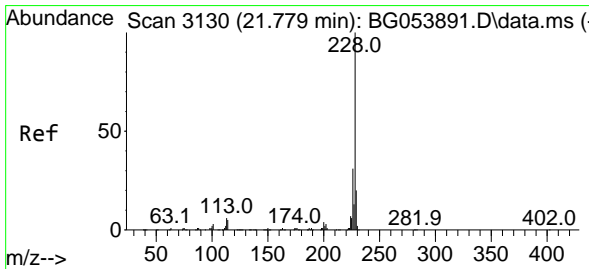
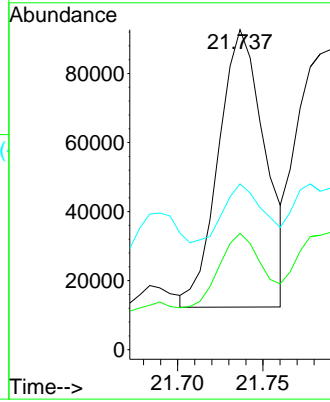
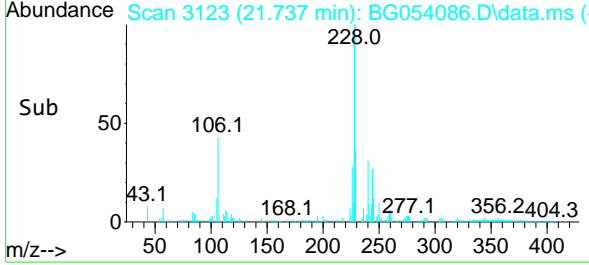


Tgt Ion:228 Resp: 152610
 Ion Ratio Lower Upper
 228 100
 226 36.3 21.6 32.4#
 229 51.8 16.2 24.2#

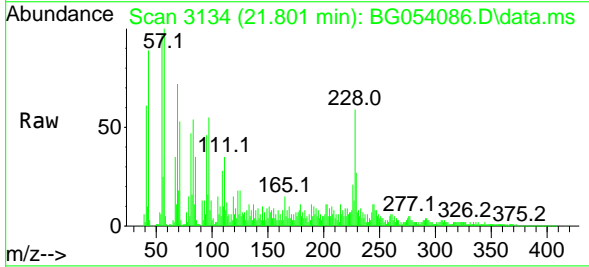
Manual Integrations

APPROVED

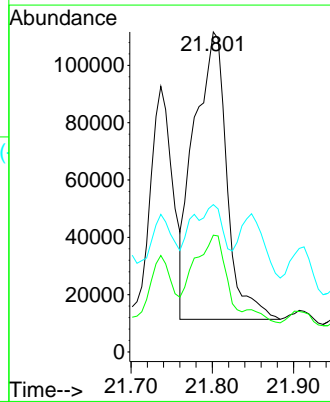
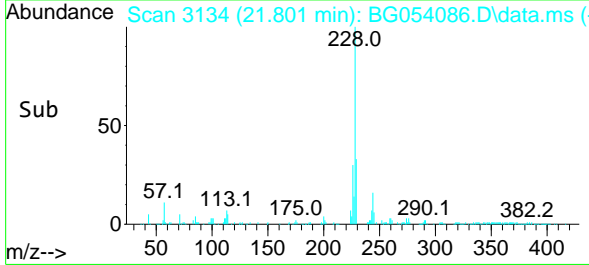
Reviewed By :Christian Giraldo 06/28/2022
 Supervised By :Jagrut Upadhyay 06/28/2022

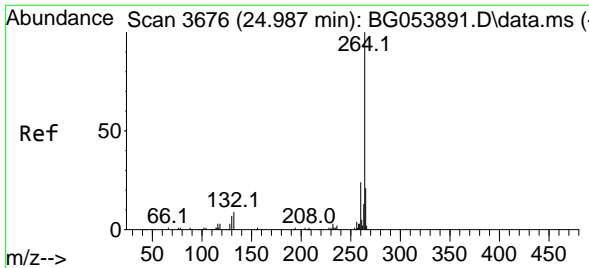


#83
 Chrysene
 Concen: 25.389 ng
 RT: 21.801 min Scan# 3134
 Delta R.T. 0.041 min
 Lab File: BG054086.D
 Acq: 26 Jun 2022 23:47



Tgt Ion:228 Resp: 281832
 Ion Ratio Lower Upper
 228 100
 226 36.5 23.4 35.2#
 229 46.0 15.5 23.3#





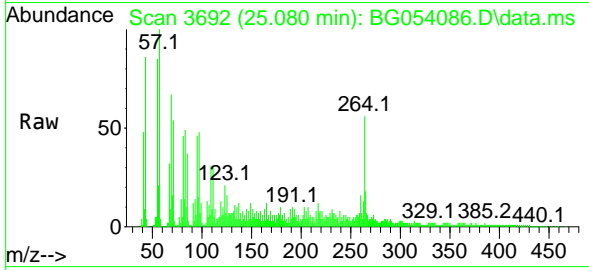
#86
 Perylene-d12
 Concen: 20.000 ng
 RT: 25.080 min Scan# 30
 Delta R.T. 0.117 min
 Lab File: BG054086.D
 Acq: 26 Jun 2022 23:47

Instrument :

BNA_G

ClientSampleId :

WC-15-1-2

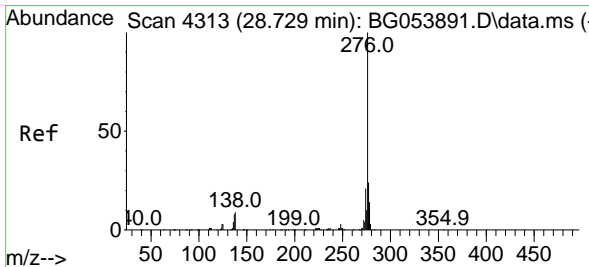
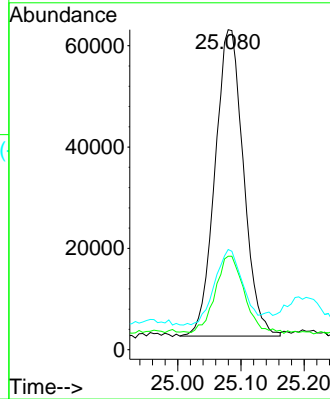
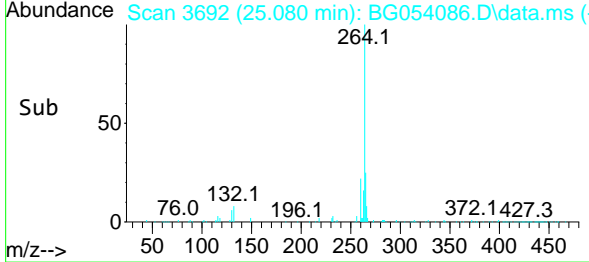


Tgt Ion:264 Resp: 18931
 Ion Ratio Lower Upper
 264 100
 260 29.2 19.0 28.6#
 265 31.3 17.4 26.2#

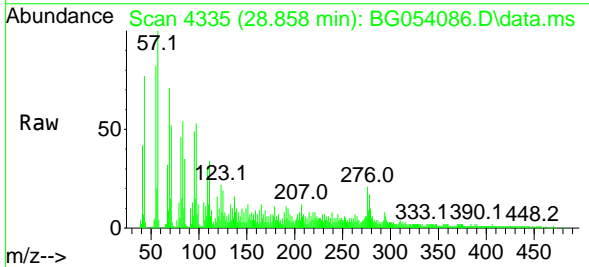
Manual Integrations

APPROVED

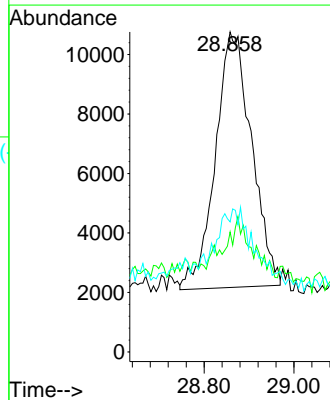
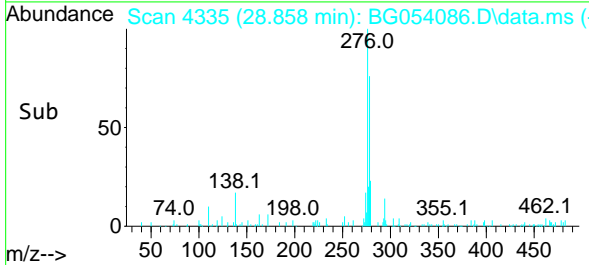
Reviewed By :Christian Giraldo 06/28/2022
 Supervised By :Jagrut Upadhyay 06/28/2022

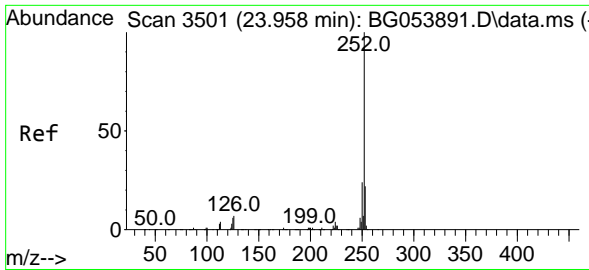


#87
 Indeno(1,2,3-cd)pyrene
 Concen: 3.371 ng
 RT: 28.858 min Scan# 4335
 Delta R.T. 0.170 min
 Lab File: BG054086.D
 Acq: 26 Jun 2022 23:47



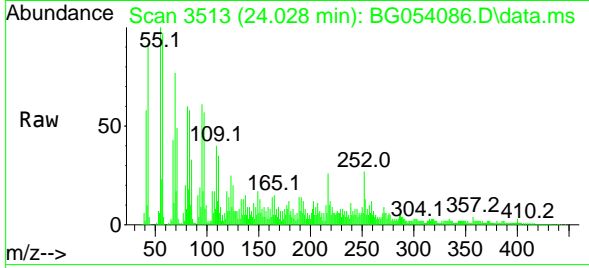
Tgt Ion:276 Resp: 48164
 Ion Ratio Lower Upper
 276 100
 138 0.0 5.0 7.4#
 277 6.7 20.3 30.5#





#88
 Benzo(b)fluoranthene
 Concen: 7.137 ng m
 RT: 24.028 min Scan# 3111
 Delta R.T. 0.094 min
 Lab File: BG054086.D
 Acq: 26 Jun 2022 23:47

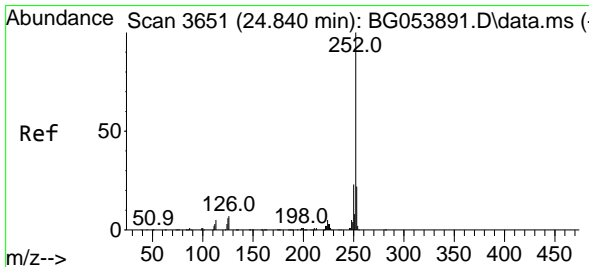
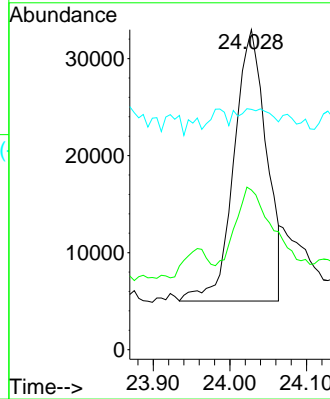
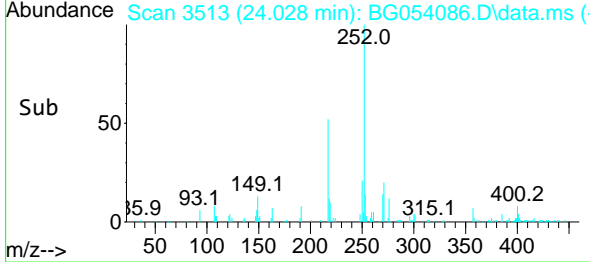
Instrument :
 BNA_G
 ClientSampleId :
 WC-15-1-2



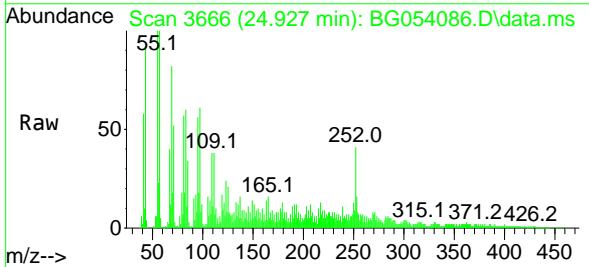
Tgt Ion:252 Resp: 8215
 Ion Ratio Lower Upper
 252 100
 253 49.9 18.0 27.0#
 125 75.1 4.6 6.8#

Manual Integrations
 APPROVED

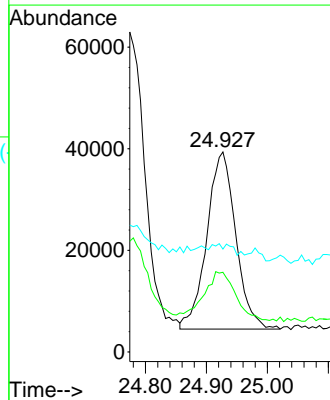
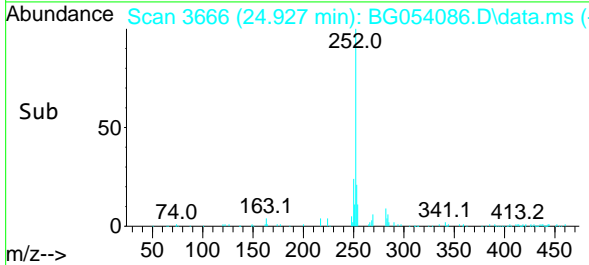
Reviewed By :Christian Giraldo 06/28/2022
 Supervised By :Jagrut Upadhyay 06/28/2022

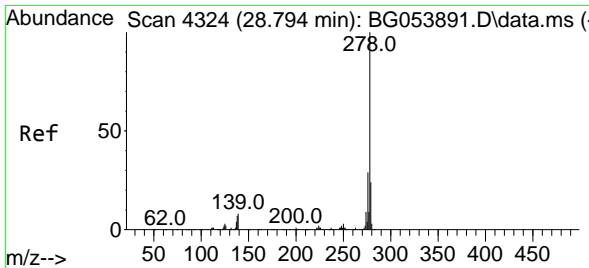


#90
 Benzo(a)pyrene
 Concen: 11.876 ng
 RT: 24.927 min Scan# 3666
 Delta R.T. 0.112 min
 Lab File: BG054086.D
 Acq: 26 Jun 2022 23:47



Tgt Ion:252 Resp: 115338
 Ion Ratio Lower Upper
 252 100
 253 39.9 17.8 26.8#
 125 51.4 4.3 6.5#





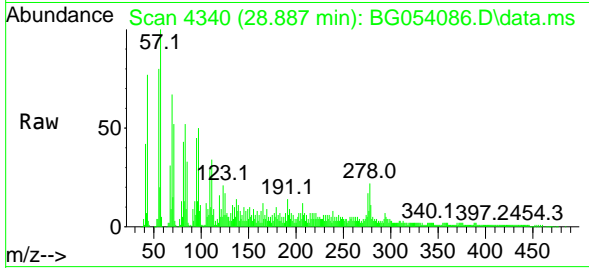
#91
 Dibenzo(a,h)anthracene
 Concen: 4.910 ng
 RT: 28.887 min Scan# 41
 Delta R.T. 0.141 min
 Lab File: BG054086.D
 Acq: 26 Jun 2022 23:47

Instrument :

BNA_G

ClientSampleId :

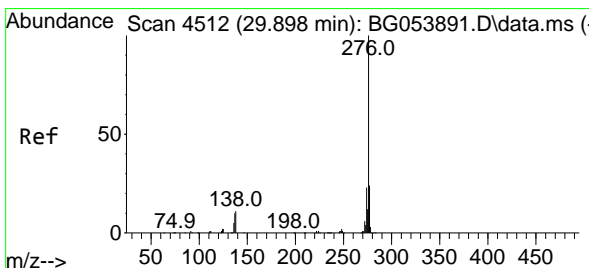
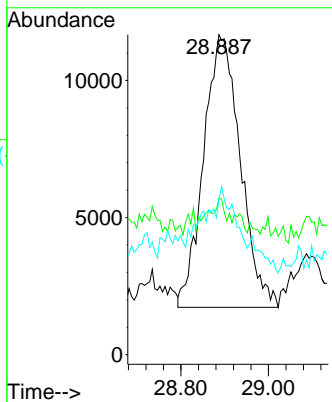
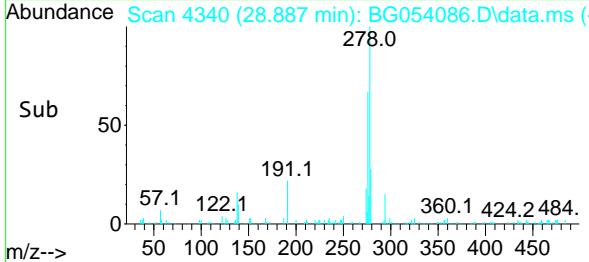
WC-15-1-2



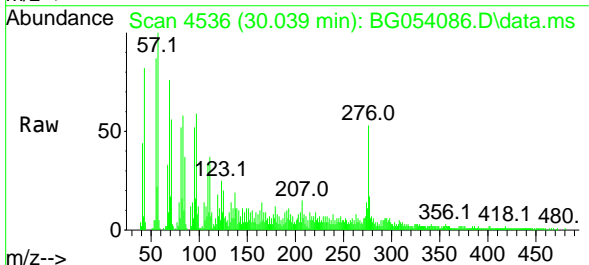
Tgt Ion	Resp	Lower	Upper
278	100		
139	49.0	7.2	10.8
279	48.4	18.6	27.8

Manual Integrations
 APPROVED

Reviewed By :Christian Giraldo 06/28/2022
 Supervised By :Jagrut Upadhyay 06/28/2022



#92
 Benzo(g,h,i)perylene
 Concen: 8.370 ng
 RT: 30.039 min Scan# 4536
 Delta R.T. 0.176 min
 Lab File: BG054086.D
 Acq: 26 Jun 2022 23:47



Tgt Ion	Resp	Lower	Upper
276	100		
277	32.8	17.3	25.9
138	21.0	9.6	14.4

