

Data Path : Z:\svoasrv\HPCHEM1\BNA_G\Data\BG092821\
 Data File : BG050310.D
 Acq On : 29 Sep 2021 8:36
 Operator : CG/JU
 Sample : M3755-10
 Misc :
 ALS Vial : 23 Sample Multiplier: 1

Instrument :
 BNA_G
 ClientSampleId :
 COAPO

Integration Parameters: LSCINT.P
 Integrator: RTE
 Smoothing : OFF Filtering: 5
 Sampling : 1 Min Area: 0.1 % of largest Peak
 Start Thrs: 0.2 Max Peaks: 100
 Stop Thrs : 0 Peak Location: TOP

If leading or trailing edge < 100 prefer < Baseline drop else tangent >
 Peak separation: 5

Method : Z:\SVOASRV\HPCHEM1\BNA_G\METHODS\SFAM-EPA-BG092521.M
 Title : SVOA CALIBRATION

Signal : TIC: BG050310.D\data.ms

peak #	R.T. min	first scan	max scan	last scan	PK TY	peak height	corr. area	corr. % max.	% of total
1	3.655	24	28	35	rVV2	7482	14430	1.58%	0.135%
2	3.966	76	81	82	rBV4	955	1383	0.15%	0.013%
3	4.084	96	101	115	rBV	75051	145548	15.89%	1.363%
4	4.189	115	119	124	rVB3	4386	6862	0.75%	0.064%
5	4.319	134	141	146	rVV2	8700	13909	1.52%	0.130%
6	4.419	154	158	165	rBV3	3785	7174	0.78%	0.067%
7	4.636	191	195	198	rVB4	2209	2914	0.32%	0.027%
8	4.748	209	214	217	rVB3	1002	1302	0.14%	0.012%
9	4.789	217	221	222	rBV2	1383	1540	0.17%	0.014%
10	4.871	232	235	236	rBV2	1122	1161	0.13%	0.011%
11	5.347	312	316	324	rBV2	3807	6857	0.75%	0.064%
12	5.694	372	375	379	rVV2	723	1193	0.13%	0.011%
13	6.269	468	473	476	rVB3	1934	2379	0.26%	0.022%
14	7.409	661	667	677	rVV	131885	241584	26.38%	2.263%
15	7.597	691	699	710	rVB	95991	168291	18.38%	1.576%
16	7.803	724	734	745	rVB	122448	220348	24.06%	2.064%
17	7.879	745	747	753	rBV3	1817	2776	0.30%	0.026%
18	8.285	806	816	823	rBV	189725	335085	36.59%	3.139%
19	8.332	823	824	828	rVB2	1338	1251	0.14%	0.012%
20	8.502	850	853	859	rVB3	1744	2701	0.29%	0.025%
21	8.966	925	932	940	rBV	143393	261457	28.55%	2.449%
22	9.113	951	957	960	rBV3	4214	6533	0.71%	0.061%
23	9.454	1006	1015	1024	rBV	114637	216999	23.70%	2.032%
24	10.177	1130	1138	1145	rBV	91501	164785	17.99%	1.543%
25	10.711	1222	1229	1238	rVB	146420	266484	29.10%	2.496%
26	10.864	1248	1255	1259	rBV2	14154	23775	2.60%	0.223%
27	11.105	1288	1296	1305	rVV	250440	468550	51.17%	4.389%
28	11.234	1310	1318	1327	rVV	134296	252953	27.62%	2.369%
29	12.674	1558	1563	1569	rVB3	2357	4488	0.49%	0.042%
30	12.744	1572	1575	1576	rBV2	1076	1130	0.12%	0.011%
31	13.714	1736	1740	1742	rVV	1343	1496	0.16%	0.014%
32	13.761	1746	1748	1754	rVB4	1523	2452	0.27%	0.023%
33	14.113	1804	1808	1813	rBV4	1488	2185	0.24%	0.020%
34	14.295	1832	1839	1844	rBV	264119	403343	44.05%	3.778%
35	14.513	1873	1876	1881	rVB3	1623	2113	0.23%	0.020%
36	14.595	1881	1890	1898	rBV	308339	491849	53.71%	4.607%

Data Path : Z:\svoasrv\HPCHEM1\BNA_G\Data\BG092821\
 Data File : BG050310.D
 Acq On : 29 Sep 2021 8:36
 Operator : CG/JU
 Sample : M3755-10
 Misc :
 ALS Vial : 23 Sample Multiplier: 1

Instrument :
 BNA_G
 ClientSampleId :
 COAPO

Integration Parameters: LSCINT.P

Integrator: RTE
 Smoothing : OFF
 Sampling : 1
 Start Thrs : 0.2
 Stop Thrs : 0

Filtering: 5
 Min Area: 0.1 % of largest Peak
 Max Peaks: 100
 Peak Location: TOP

If leading or trailing edge < 100 prefer < Baseline drop else tangent >
 Peak separation: 5

Method : Z:\SVOASRV\HPCHEM1\BNA_G\METHODS\SFAM-EPA-BG092521.M
 Title : SVOA CALIBRATION

37	14.765	1916	1919	1922	rVV4	1453	1256	0.14%	0.012%
38	14.895	1934	1941	1949	rBV	397842	647481	70.71%	6.065%
39	14.959	1949	1952	1955	rVB3	1211	1453	0.16%	0.014%
40	15.059	1962	1969	1977	rBV	118997	193839	21.17%	1.816%
41	15.300	2005	2010	2014	rVB4	3656	5445	0.59%	0.051%
42	15.365	2018	2021	2024	rBV2	1000	1280	0.14%	0.012%
43	15.488	2040	2042	2044	rBV2	1056	1147	0.13%	0.011%
44	15.676	2071	2074	2077	rVV4	1257	1900	0.21%	0.018%
45	15.717	2077	2081	2083	rVV2	1998	2118	0.23%	0.020%
46	15.882	2102	2109	2116	rBV	391694	624048	68.15%	5.845%
47	15.982	2121	2126	2133	rVV	97989	153979	16.81%	1.442%
48	16.034	2133	2135	2138	rVB2	1371	1335	0.15%	0.013%
49	16.128	2145	2151	2159	rVB5	2338	5007	0.55%	0.047%
50	16.305	2178	2181	2184	rBV2	1091	1327	0.14%	0.012%
51	16.428	2197	2202	2203	rBV3	1203	1422	0.16%	0.013%
52	16.581	2223	2228	2229	rBV2	1800	2397	0.26%	0.022%
53	16.604	2230	2232	2236	rVV4	2193	2092	0.23%	0.020%
54	16.828	2267	2270	2275	rVB3	1162	1848	0.20%	0.017%
55	16.869	2275	2277	2280	rBV3	1482	1774	0.19%	0.017%
56	17.163	2326	2327	2330	rBV3	1238	1278	0.14%	0.012%
57	17.292	2346	2349	2352	rVB3	1289	1251	0.14%	0.012%
58	17.368	2360	2362	2367	rBV4	2335	3515	0.38%	0.033%
59	17.421	2367	2371	2377	rBV4	2201	4212	0.46%	0.039%
60	17.527	2387	2389	2393	rVB4	1186	1206	0.13%	0.011%
61	17.638	2401	2408	2414	rBV	522262	795795	86.90%	7.454%
62	17.738	2419	2425	2433	rVV	439391	662043	72.30%	6.201%
63	17.809	2433	2437	2441	rVB4	7573	8698	0.95%	0.081%
64	17.903	2450	2453	2455	rBV3	2334	2367	0.26%	0.022%
65	17.985	2464	2467	2468	rBV2	1934	1753	0.19%	0.016%
66	18.108	2486	2488	2493	rVV4	1586	2262	0.25%	0.021%
67	18.167	2495	2498	2500	rBV2	1571	1840	0.20%	0.017%
68	18.220	2505	2507	2508	rBV2	1255	1210	0.13%	0.011%
69	18.285	2514	2518	2524	rBV4	5116	7722	0.84%	0.072%
70	18.355	2528	2530	2533	rBV3	1280	1274	0.14%	0.012%
71	18.420	2540	2541	2544	rBV3	1310	1224	0.13%	0.011%
72	18.496	2550	2554	2562	rBV3	25976	41747	4.56%	0.391%
73	18.573	2565	2567	2568	rBV2	3775	2906	0.32%	0.027%
74	18.626	2575	2576	2578	rBV2	1407	1313	0.14%	0.012%
75	18.684	2584	2586	2587	rBV2	2146	1534	0.17%	0.014%
76	18.714	2587	2591	2593	rVV4	3200	4264	0.47%	0.040%

Data Path : Z:\svoasrv\HPCHEM1\BNA_G\Data\BG092821\
 Data File : BG050310.D
 Acq On : 29 Sep 2021 8:36
 Operator : CG/JU
 Sample : M3755-10
 Misc :
 ALS Vial : 23 Sample Multiplier: 1

Instrument :
 BNA_G
 ClientSampleId :
 C0AP0

Integration Parameters: LSCINT.P
 Integrator: RTE
 Smoothing : OFF Filtering: 5
 Sampling : 1 Min Area: 0.1 % of largest Peak
 Start Thrs: 0.2 Max Peaks: 100
 Stop Thrs : 0 Peak Location: TOP

If leading or trailing edge < 100 prefer < Baseline drop else tangent >
 Peak separation: 5

Method : Z:\SVOASRV\HPCHEM1\BNA_G\METHODS\SFAM-EPA-BG092521.M
 Title : SVOA CALIBRATION

77	18.784	2600	2603	2604	rBV3	4437	3491	0.38%	0.033%
78	18.878	2617	2619	2622	rBV3	1645	1827	0.20%	0.017%
79	18.919	2624	2626	2631	rBV6	1982	2709	0.30%	0.025%
80	18.955	2631	2632	2634	rVB2	1901	1213	0.13%	0.011%
81	19.002	2638	2640	2644	rVB4	1945	1575	0.17%	0.015%
82	19.107	2656	2658	2660	rVB3	2701	2318	0.25%	0.022%
83	19.143	2660	2664	2667	rBV6	2880	4404	0.48%	0.041%
84	19.248	2679	2682	2683	rBV3	4126	3324	0.36%	0.031%
85	19.295	2686	2690	2692	rBV5	2093	3242	0.35%	0.030%
86	19.354	2695	2700	2701	rBV4	3642	5090	0.56%	0.048%
87	19.407	2706	2709	2714	rVV7	6672	10550	1.15%	0.099%
88	19.542	2730	2732	2733	rBV2	5451	3789	0.41%	0.035%
89	19.577	2736	2738	2743	rVB5	6186	7943	0.87%	0.074%
90	19.648	2746	2750	2752	rVV4	13928	18155	1.98%	0.170%
91	19.677	2752	2755	2761	rVB2	27697	42565	4.65%	0.399%
92	19.724	2761	2763	2765	rBV3	2908	2777	0.30%	0.026%
93	19.759	2765	2769	2779	rBV10	14237	31725	3.46%	0.297%
94	19.842	2781	2783	2785	rBV3	3543	3027	0.33%	0.028%
95	20.012	2806	2812	2822	rBV	586067	901303	98.42%	8.442%
96	20.517	2896	2898	2903	rVB5	11714	14042	1.53%	0.132%
97	21.552	3071	3074	3080	rVB3	41029	55848	6.10%	0.523%
98	21.945	3134	3141	3147	rBV	487530	869691	94.97%	8.146%
99	25.147	3677	3686	3699	rVB2	275180	820335	89.58%	7.684%
100	25.382	3716	3726	3742	rVB2	288968	915736	100.00%	8.577%

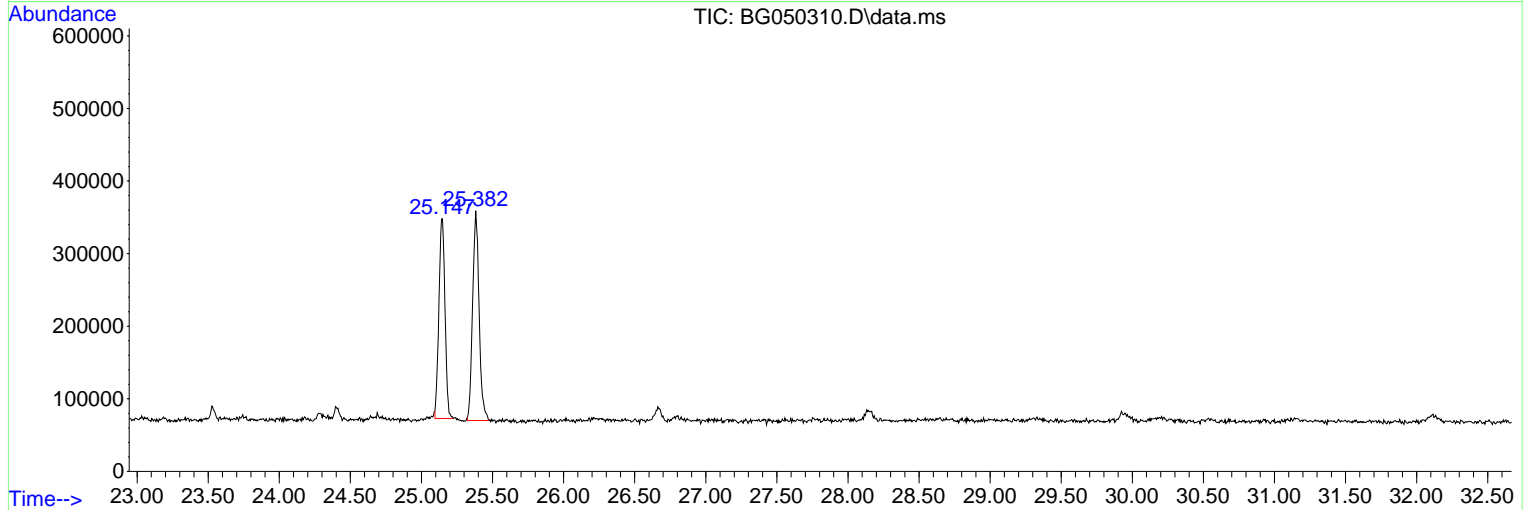
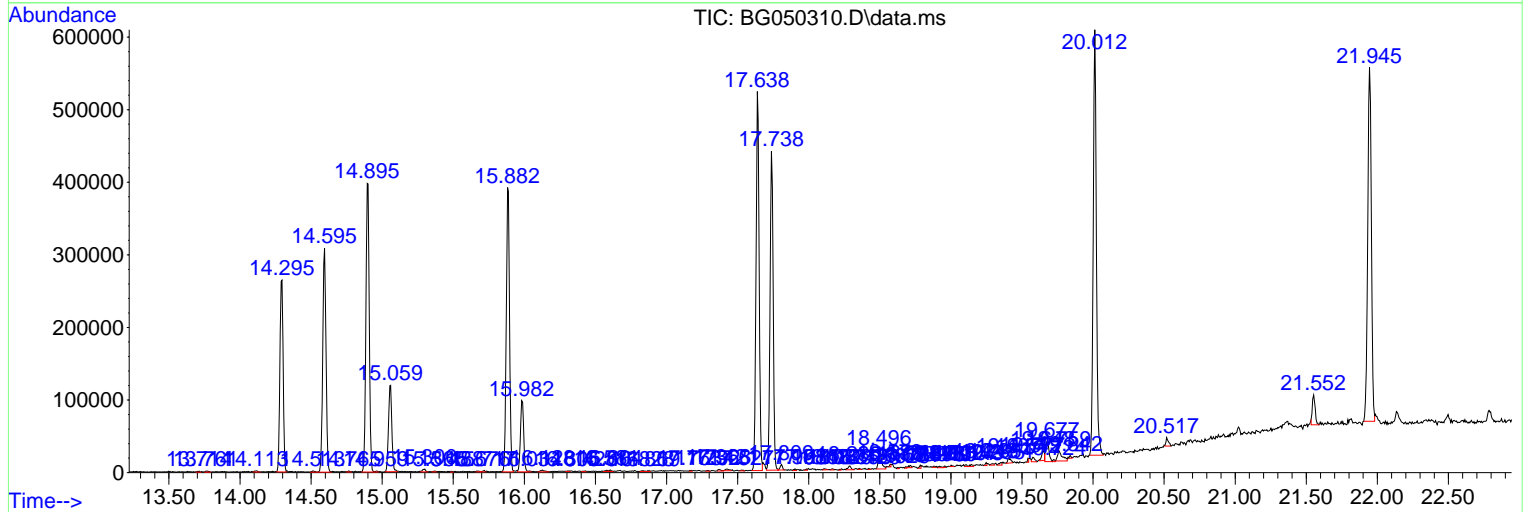
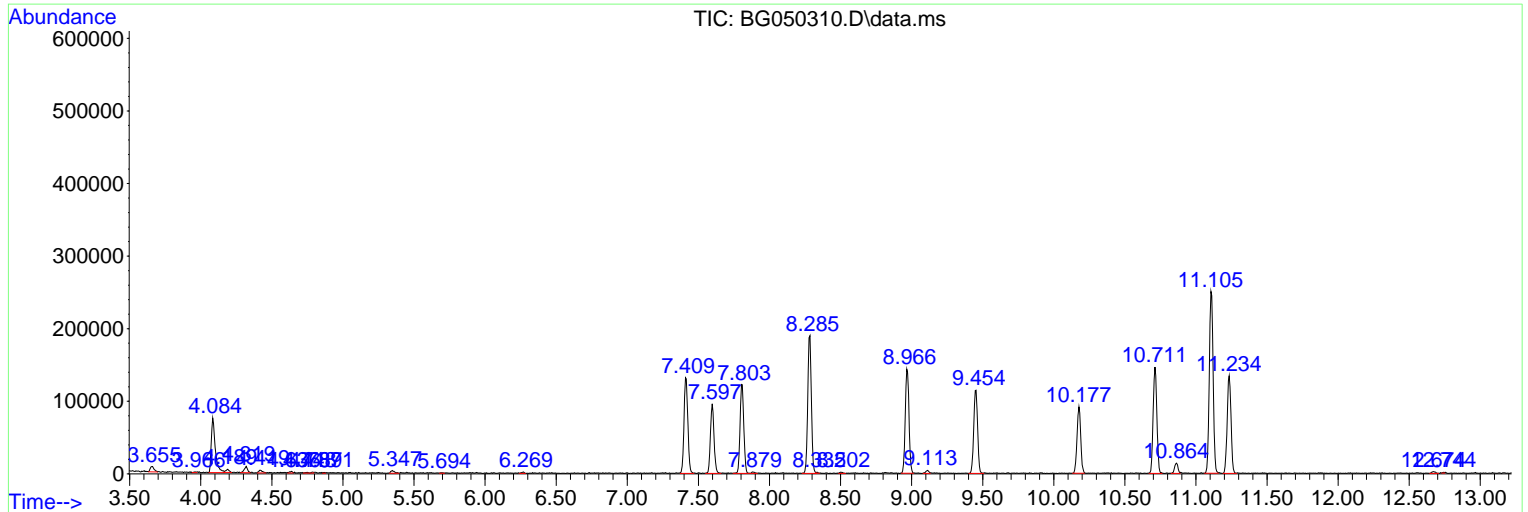
Sum of corrected areas: 10676521

Data Path : Z:\svoasrv\HPCHEM1\BNA_G\Data\BG092821\
 Data File : BG050310.D
 Acq On : 29 Sep 2021 8:36
 Operator : CG/JU
 Sample : M3755-10
 Misc :
 ALS Vial : 23 Sample Multiplier: 1

Instrument :
 BNA_G
ClientSampleId :
 COAPO

Quant Method : Z:\SVOASRV\HPCHEM1\BNA_G\METHODS\SFAM-EPA-BG092521.M
 Quant Title : SVOA CALIBRATION

TIC Library : C:\DATABASE\NIST20.L
 TIC Integration Parameters: LSCINT.P



Library Search Compound Report

Data Path : Z:\svoasrv\HPCHEM1\BNA_G\Data\BG092821\
Data File : BG050310.D
Acq On : 29 Sep 2021 8:36
Operator : CG/JU
Sample : M3755-10
Misc :
ALS Vial : 23 Sample Multiplier: 1

Instrument :
BNA_G
ClientSampleId :
C0APO

Quant Method : Z:\SVOASRV\HPCHEM1\BNA_G\METHODS\SFAM-EPA-BG092521.M
Quant Title : SVOA CALIBRATION

TIC Library : C:\DATABASE\NIST20.L
TIC Integration Parameters: LSCINT.P

No Library Search Compounds Detected

Data Path : Z:\svoasrv\HPCHEM1\BNA_G\Data\BG092821\
Data File : BG050310.D
Acq On : 29 Sep 2021 8:36
Operator : CG/JU
Sample : M3755-10
Misc :
ALS Vial : 23 Sample Multiplier: 1

Instrument :
BNA_G
ClientSampleId :
C0APO

Quant Method : Z:\SVOASRV\HPCHEM1\BNA_G\METHODS\SFAM-EPA-BG092521.M
Quant Title : SVOA CALIBRATION

TIC Library : C:\DATABASE\NIST0.L
TIC Integration Parameters: LSCINT.P

TIC Top Hit name	RT	EstConc	Units	Response	--Internal Standard--			
					#	RT	Resp	Conc
