

Data Path : Z:\SVOASRV\HPCHEM1\BNA_G\DATA\BG100519\
 Data File : BG043056.D
 Acq On : 5 Oct 2019 15:32
 Operator : JU
 Sample : K5193-05
 Misc :
 ALS Vial : 11 Sample Multiplier: 1

Instrument :
 BNA_G
 ClientSampleId :
 20190879-COMPOSITE-K

Manual Integrations
 APPROVED

mohammad
 10/7/2019 4:39:08 PM

Quant Time: Oct 07 08:58:47 2019
 Quant Method : Z:\SVOASRV\HPCHEM1\BNA_G\METHODS\8270-BG092519.M
 Quant Title : ASP BNA STANDARDS FOR 5 POINT CALIBRATION
 QLast Update : Wed Sep 25 15:35:52 2019
 Response via : Initial Calibration

| Internal Standards | R.T. | QIon | Response | Conc | Units | Dev(Min) |
|-----------------------------|-------|------|----------|--------|-------|----------|
| 1) 1,4-Dichlorobenzene-d4 | 8.06 | 152 | 73396 | 20.00 | ng | -0.02 |
| 21) Naphthalene-d8 | 10.86 | 136 | 273052 | 20.00 | ng | -0.02 |
| 39) Acenaphthene-d10 | 14.68 | 164 | 188843 | 20.00 | ng | -0.01 |
| 64) Phenanthrene-d10 | 17.42 | 188 | 436324 | 20.00 | ng | -0.01 |
| 76) Chrysene-d12 | 21.69 | 240 | 465624 | 20.00 | ng | -0.03 |
| 87) Perylene-d12 | 24.91 | 264 | 536319 | 20.00 | ng | -0.05 |
| System Monitoring Compounds | | | | | | |
| 5) 2-Fluorophenol | 5.65 | 112 | 511231 | 124.31 | ng | 0.00 |
| 7) Phenol-d6 | 7.24 | 99 | 720091 | 121.59 | ng | 0.00 |
| 23) Nitrobenzene-d5 | 9.22 | 82 | 465587 | 82.88 | ng | -0.01 |
| 42) 2,4,6-Tribromophenol | 16.17 | 330 | 453342 | 139.61 | ng | -0.01 |
| 45) 2-Fluorobiphenyl | 13.31 | 172 | 1126008 | 86.44 | ng | -0.02 |
| 79) Terphenyl-d14 | 20.03 | 244 | 2074370 | 94.93 | ng | -0.01 |
| Target Compounds | | | | | | |
| 10) Phenol | 7.27 | 94 | 43595 | 8.023 | ng | 96 |
| 32) Benzoic acid | 10.13 | 122 | 3722m | 4.286 | ng | |
| 50) Dimethylphthalate | 14.13 | 163 | 161039 | 11.381 | ng | 98 |

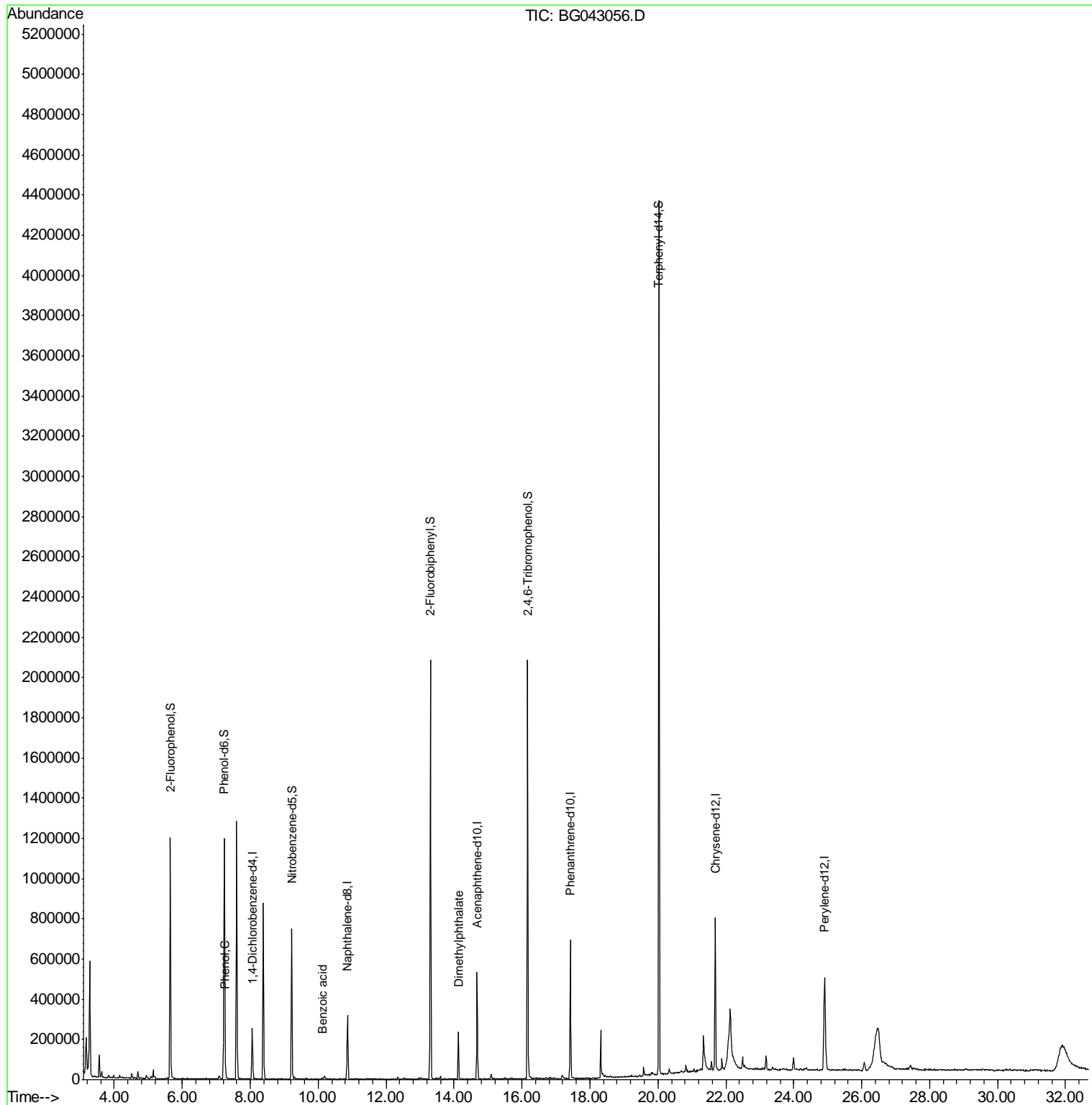
(#) = qualifier out of range (m) = manual integration (+) = signals summed

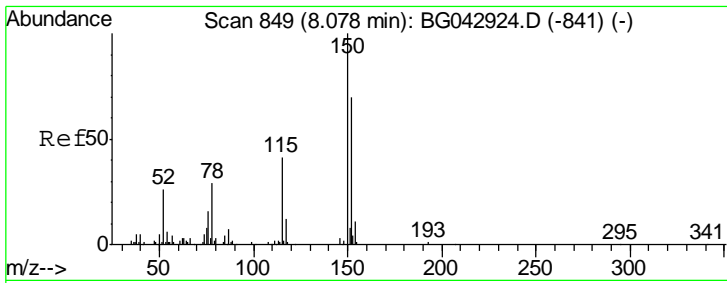
Data Path : Z:\SVOASRV\HPCHEM1\BNA_G\DATA\BG100519\
 Data File : BG043056.D
 Acq On : 5 Oct 2019 15:32
 Operator : JU
 Sample : K5193-05
 Misc :
 ALS Vial : 11 Sample Multiplier: 1

Instrument :
 BNA_G
ClientSampled :
 20190879-COMPOSITE-K

Manual Integrations
APPROVED
 mohammad
 10/7/2019 4:39:08 PM

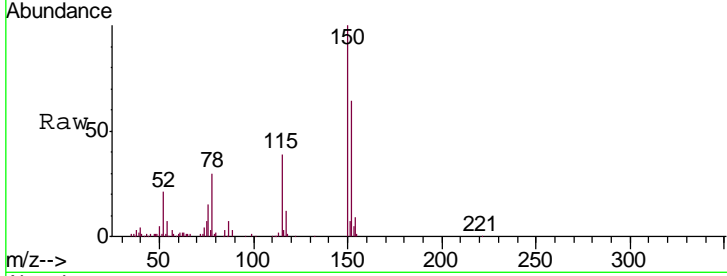
Quant Time: Oct 07 08:58:47 2019
 Quant Method : Z:\SVOASRV\HPCHEM1\BNA_G\METHODS\8270-BG092519.M
 Quant Title : ASP BNA STANDARDS FOR 5 POINT CALIBRATION
 QLast Update : Wed Sep 25 15:35:52 2019
 Response via : Initial Calibration





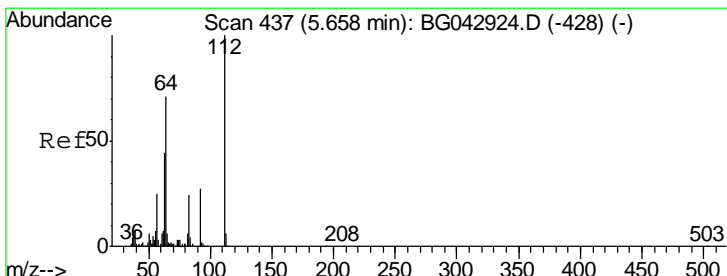
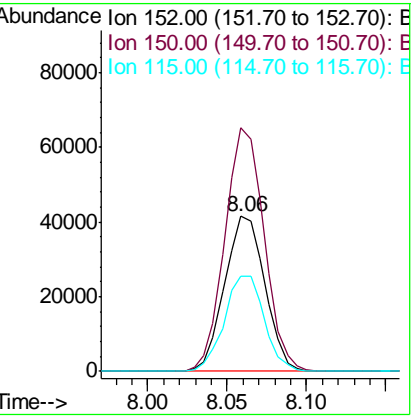
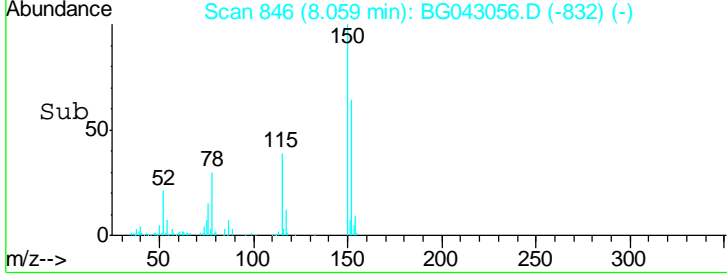
#1
 1,4-Dichlorobenzene-d4
 Concen: 20.000 ng
 RT: 8.06 min Scan# 846
 Delta R.T. -0.02 min
 Lab File: BG043056.D
 Acq: 5 Oct 2019 15:32

Instrument :
 BNA_G
ClientSampled :
 20190879-COMPOSITE-K



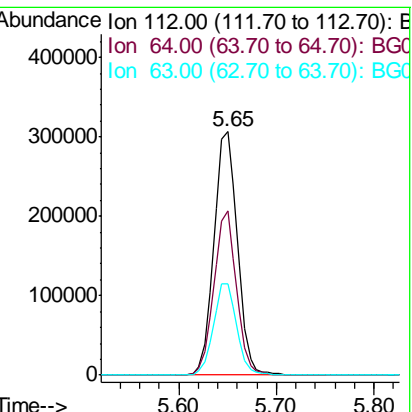
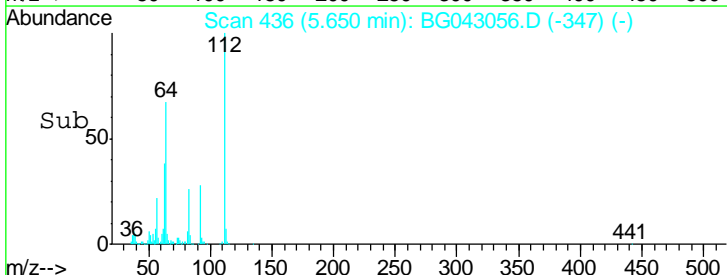
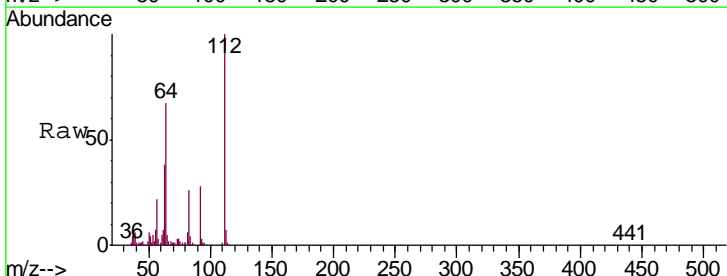
| Tgt Ion | Resp | Lower | Upper |
|---------|-------|-------|-------|
| 152 | 73396 | | |
| 150 | 100 | 115.0 | 172.4 |
| 115 | 61.0 | 47.0 | 70.6 |

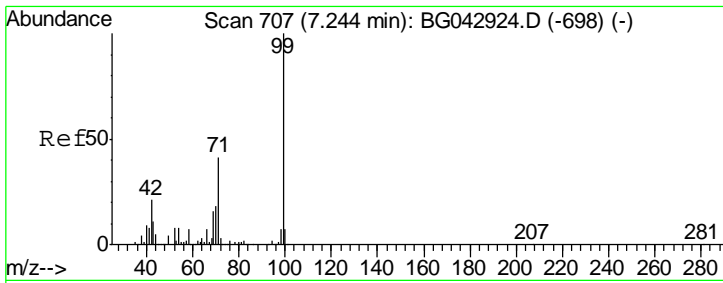
Manual Integrations
APPROVED
 mohammad
 10/7/2019 4:39:08 PM



#5
 2-Fluorophenol
 Concen: 124.306 ng
 RT: 5.65 min Scan# 436
 Delta R.T. -0.01 min
 Lab File: BG043056.D
 Acq: 5 Oct 2019 15:32

| Tgt Ion | Resp | Lower | Upper |
|---------|--------|-------|-------|
| 112 | 511231 | | |
| 112 | 100 | | |
| 64 | 67.2 | 56.6 | 84.8 |
| 63 | 37.7 | 35.1 | 52.7 |





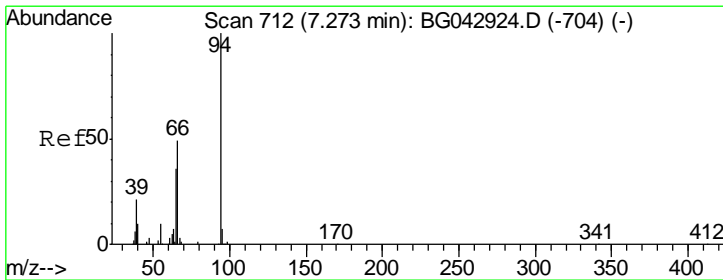
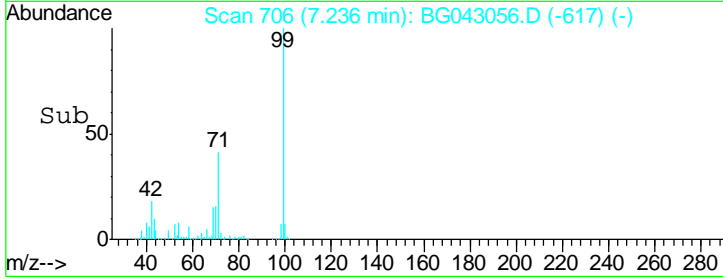
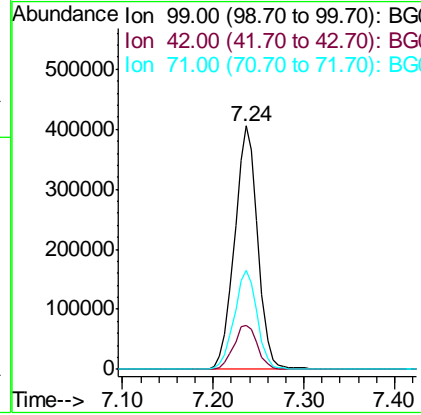
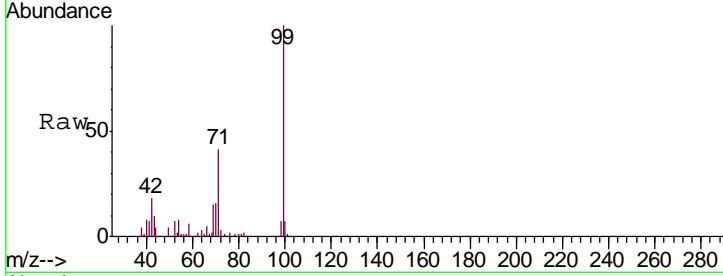
#7
 Phenol-d6
 Concen: 121.585 ng
 RT: 7.24 min Scan# 706
 Delta R.T. -0.01 min
 Lab File: BG043056.D
 Acq: 5 Oct 2019 15:32

Instrument :
 BNA_G
ClientSampled :
 20190879-COMPOSITE-K

| Tgt Ion | Resp | Lower | Upper |
|---------|-------|-------|-------|
| 99 | 72091 | | |
| 42 | 18.2 | 17.2 | 25.8 |
| 71 | 40.8 | 33.1 | 49.7 |

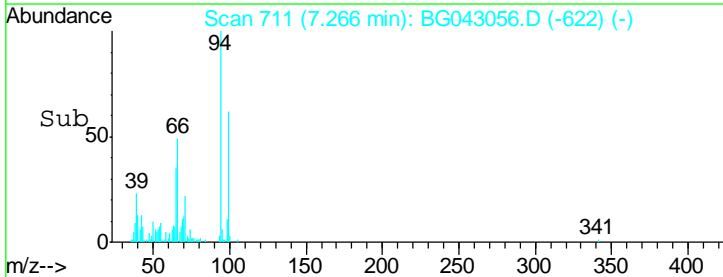
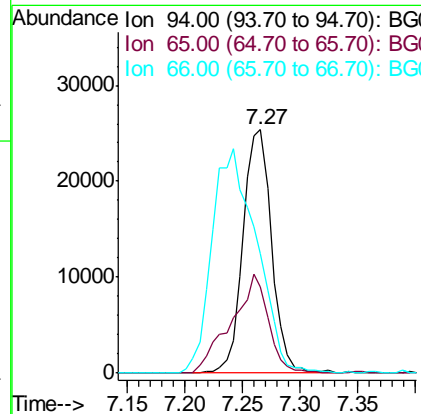
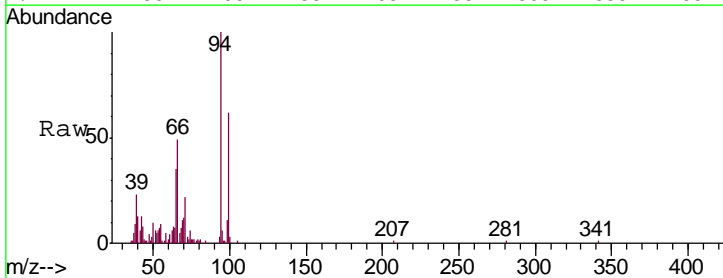
Manual Integrations
APPROVED

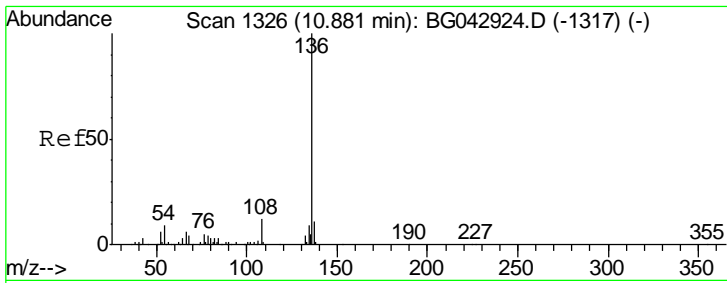
mohammad
 10/7/2019 4:39:08 PM



#10
 Phenol
 Concen: 8.023 ng
 RT: 7.27 min Scan# 711
 Delta R.T. -0.01 min
 Lab File: BG043056.D
 Acq: 5 Oct 2019 15:32

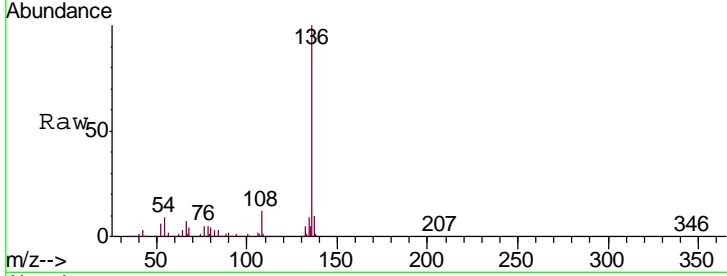
| Tgt Ion | Resp | Lower | Upper |
|---------|-------|-------|-------|
| 94 | 43595 | | |
| 65 | 35.2 | 16.6 | 56.6 |
| 66 | 49.2 | 32.4 | 72.4 |





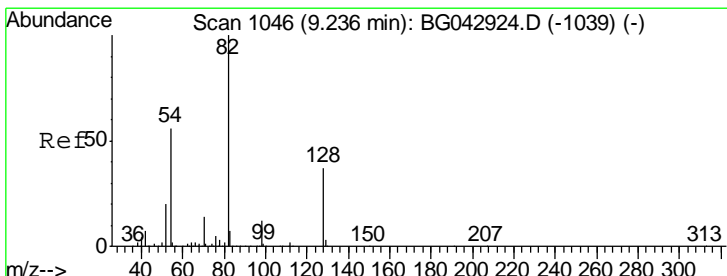
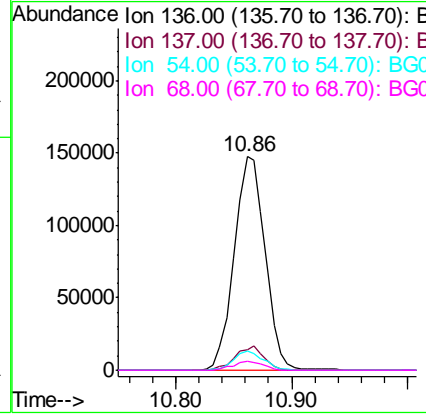
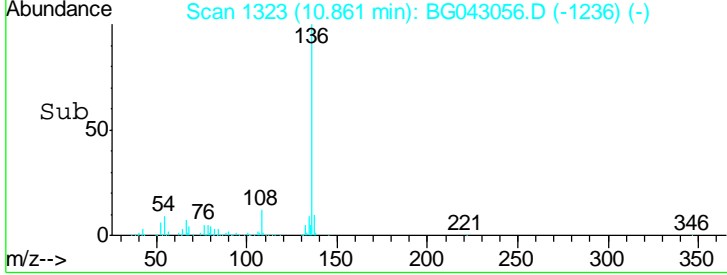
#21
 Naphthalene-d8
 Concen: 20.000 ng
 RT: 10.86 min Scan# 1323
 Delta R.T. -0.02 min
 Lab File: BG043056.D
 Acq: 5 Oct 2019 15:32

Instrument :
 BNA_G
ClientSampled :
 20190879-COMPOSITE-K

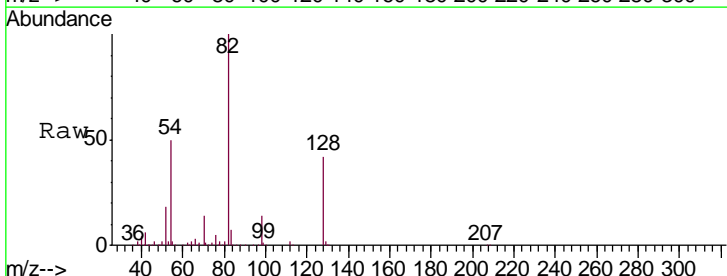


| Tgt Ion | Resp | Lower | Upper |
|---------|------|-------|-------|
| 136 | 100 | | |
| 137 | 9.9 | 8.5 | 12.7 |
| 54 | 8.7 | 7.4 | 11.2 |
| 68 | 4.5 | 3.6 | 5.4 |

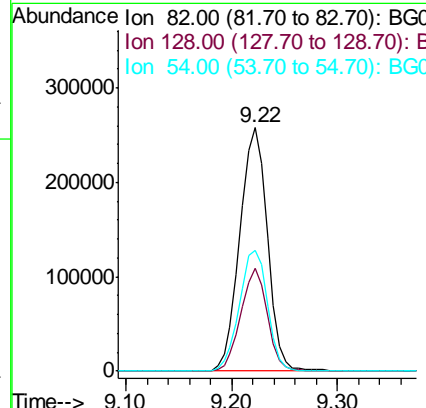
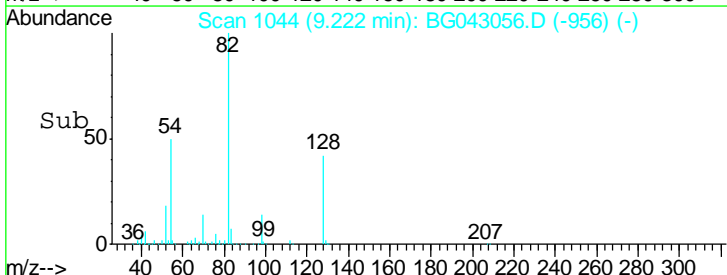
Manual Integrations
APPROVED
 mohammad
 10/7/2019 4:39:08 PM

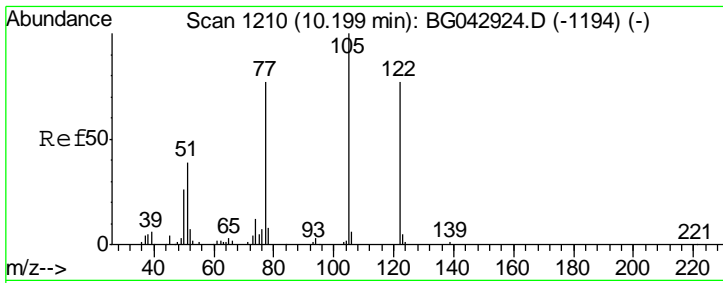


#23
 Nitrobenzene-d5
 Concen: 82.878 ng
 RT: 9.22 min Scan# 1044
 Delta R.T. -0.01 min
 Lab File: BG043056.D
 Acq: 5 Oct 2019 15:32



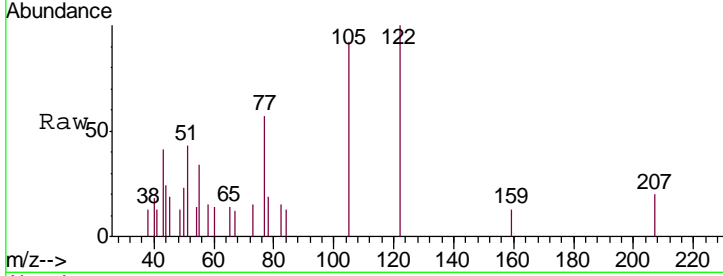
| Tgt Ion | Resp | Lower | Upper |
|---------|------|-------|-------|
| 82 | 100 | | |
| 128 | 42.4 | 29.5 | 44.3 |
| 54 | 49.6 | 44.6 | 67.0 |





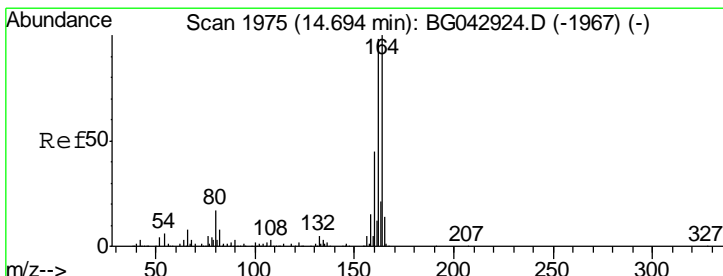
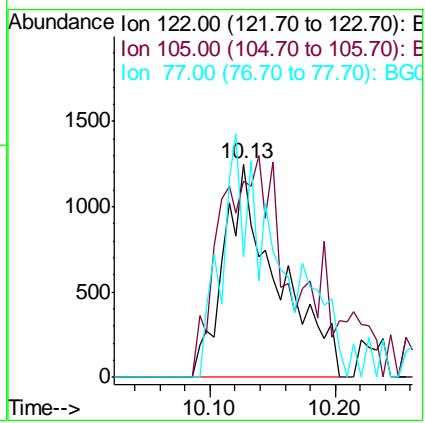
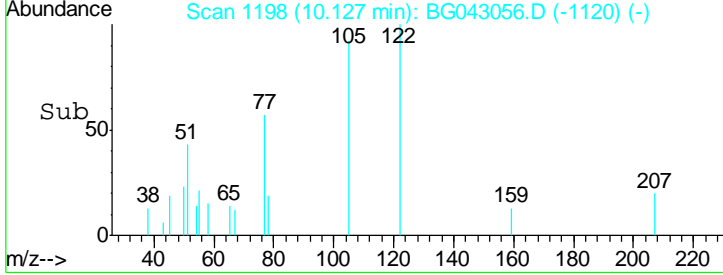
#32
 Benzoic acid
 Concen: 4.286 ng m
 RT: 10.13 min Scan# 1198
 Delta R.T. -0.07 min
 Lab File: BG043056.D
 Acq: 5 Oct 2019 15:32

Instrument :
 BNA_G
ClientSampled :
 20190879-COMPOSITE-K

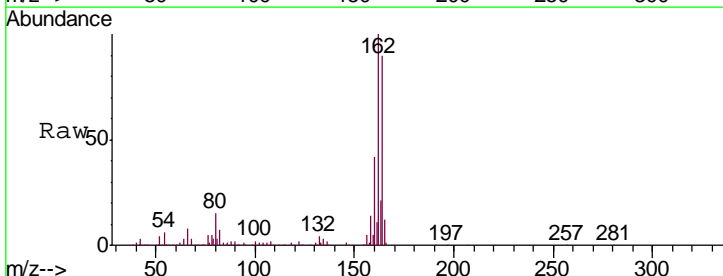


| Tgt Ion | Resp | Lower | Upper |
|---------|------|-------|--------|
| 122 | 3722 | | |
| 105 | 92.4 | 107.5 | 147.5# |
| 77 | 56.8 | 79.8 | 119.8# |

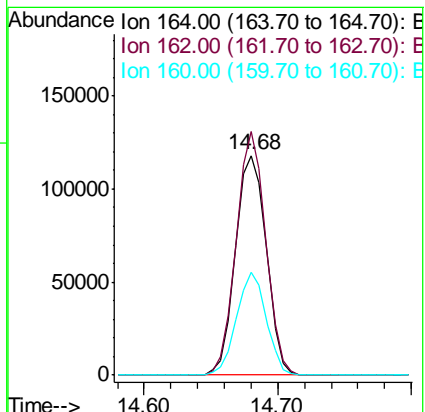
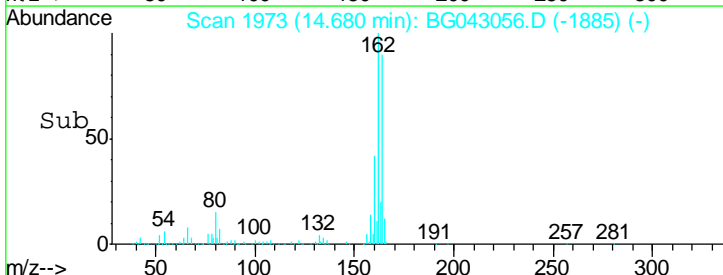
Manual Integrations
APPROVED
 mohammad
 10/7/2019 4:39:08 PM

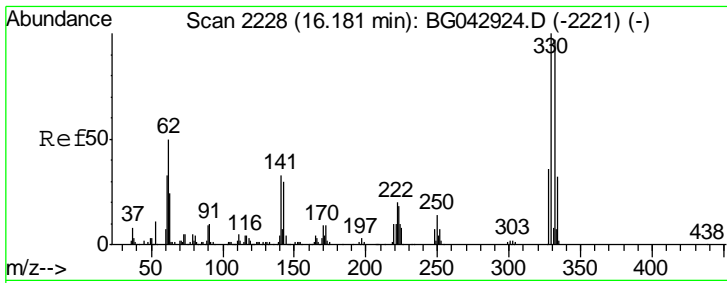


#39
 Acenaphthene-d10
 Concen: 20.000 ng
 RT: 14.68 min Scan# 1973
 Delta R.T. -0.01 min
 Lab File: BG043056.D
 Acq: 5 Oct 2019 15:32



| Tgt Ion | Resp | Lower | Upper |
|---------|--------|-------|-------|
| 164 | 188843 | | |
| 162 | 110.9 | 78.5 | 117.7 |
| 160 | 46.9 | 35.9 | 53.9 |





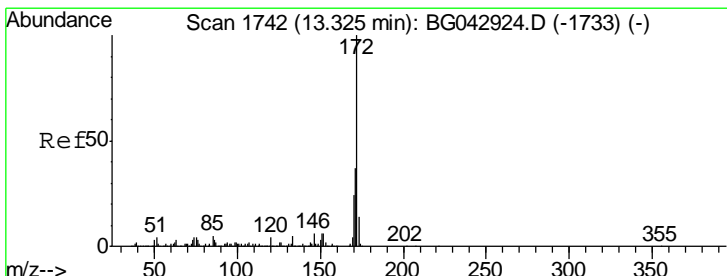
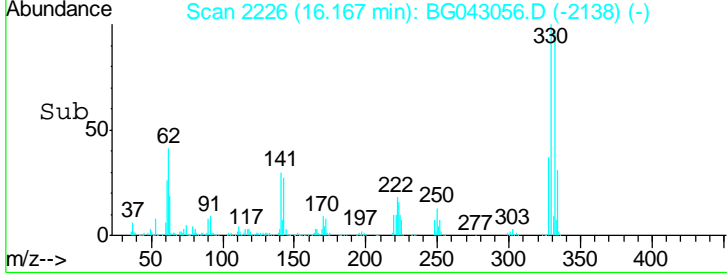
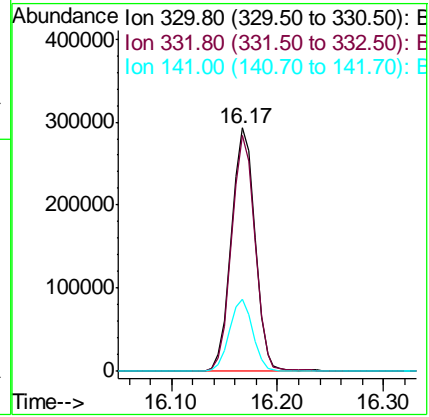
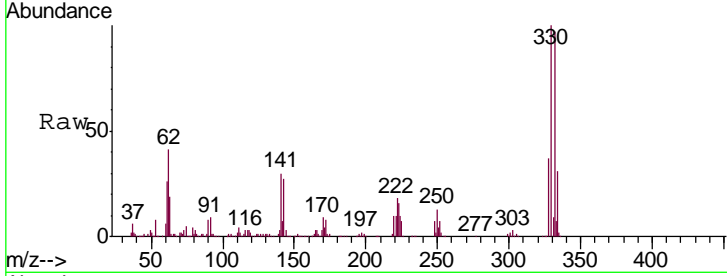
#42
 2,4,6-Tribromophenol
 Concen: 139.607 ng
 RT: 16.17 min Scan# 2226
 Delta R.T. -0.01 min
 Lab File: BG043056.D
 Acq: 5 Oct 2019 15:32

Instrument :
 BNA_G
ClientSampled :
 20190879-COMPOSITE-K

| Tgt Ion | Resp | Lower | Upper |
|---------|------|-------|-------|
| 330 | 100 | | |
| 332 | 96.0 | 78.2 | 117.2 |
| 141 | 29.5 | 26.0 | 39.0 |

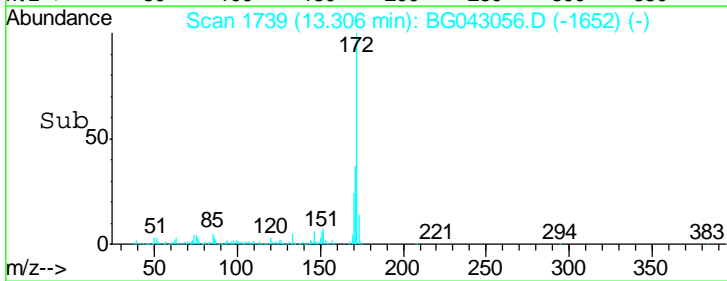
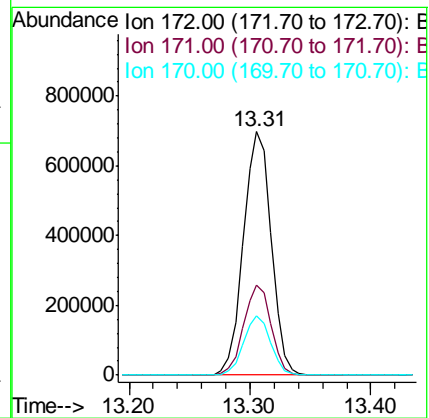
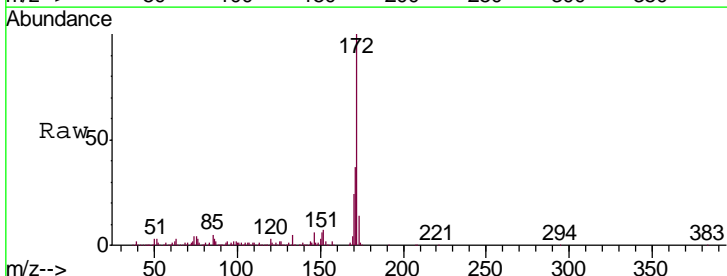
Manual Integrations
APPROVED

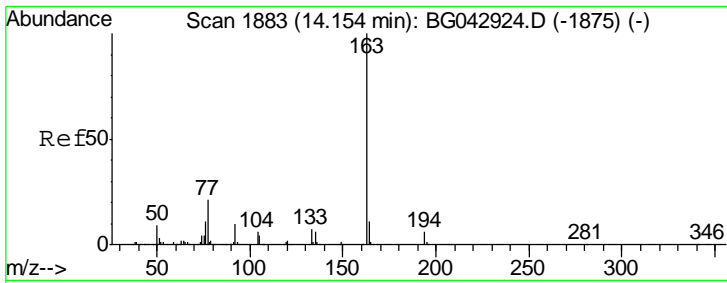
mohammad
 10/7/2019 4:39:08 PM



#45
 2-Fluorobiphenyl
 Concen: 86.441 ng
 RT: 13.31 min Scan# 1739
 Delta R.T. -0.02 min
 Lab File: BG043056.D
 Acq: 5 Oct 2019 15:32

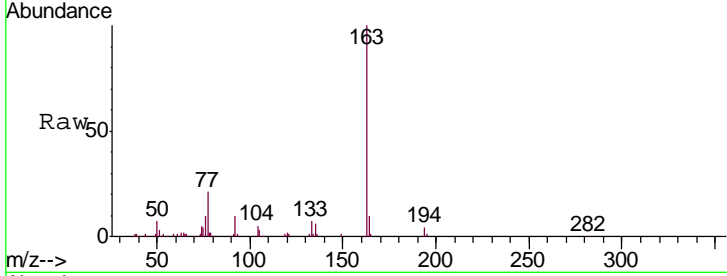
| Tgt Ion | Resp | Lower | Upper |
|---------|------|-------|-------|
| 172 | 100 | | |
| 171 | 37.1 | 29.6 | 44.4 |
| 170 | 24.4 | 19.6 | 29.4 |





#50
 Dimethylphthalate
 Concen: 11.381 ng
 RT: 14.13 min Scan# 1879
 Delta R.T. -0.03 min
 Lab File: BG043056.D
 Acq: 5 Oct 2019 15:32

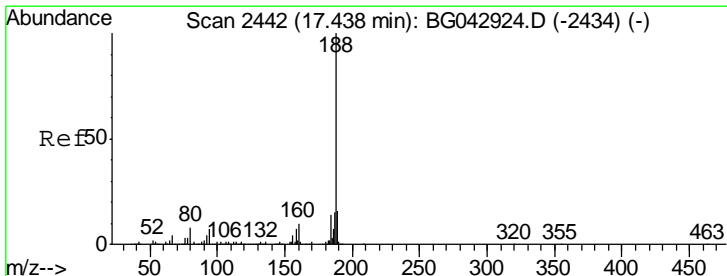
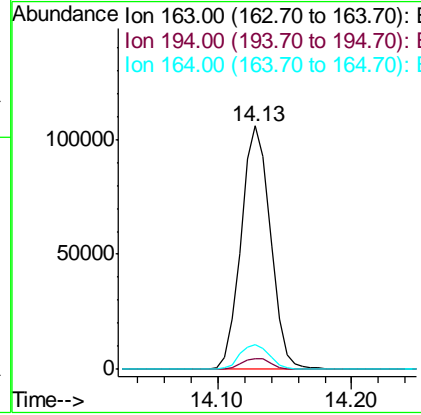
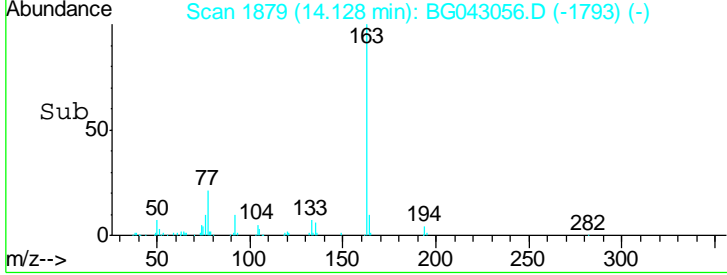
Instrument :
 BNA_G
 ClientSampled :
 20190879-COMPOSITE-K



| Tgt Ion | Resp | Lower | Upper |
|---------|------|-------|-------|
| 163 | 100 | | |
| 194 | 4.5 | 4.4 | 6.6 |
| 164 | 10.1 | 8.6 | 12.8 |

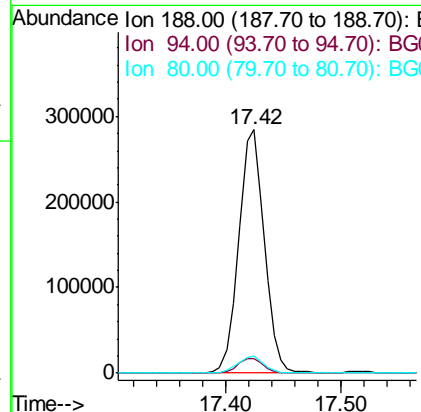
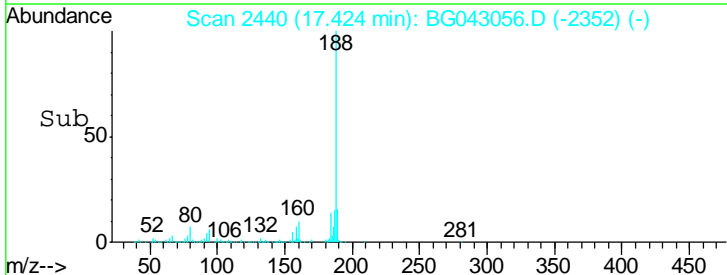
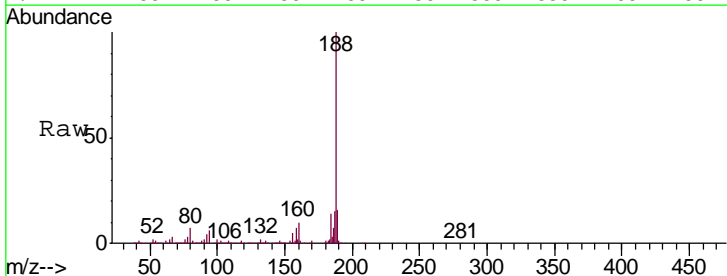
Manual Integrations
 APPROVED

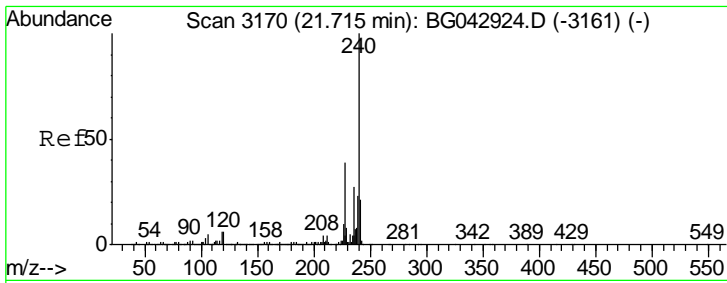
mohammad
 10/7/2019 4:39:08 PM



#64
 Phenanthrene-d10
 Concen: 20.000 ng
 RT: 17.42 min Scan# 2440
 Delta R.T. -0.01 min
 Lab File: BG043056.D
 Acq: 5 Oct 2019 15:32

| Tgt Ion | Resp | Lower | Upper |
|---------|------|-------|-------|
| 188 | 100 | | |
| 94 | 6.0 | 5.7 | 8.5 |
| 80 | 6.8 | 6.5 | 9.7 |





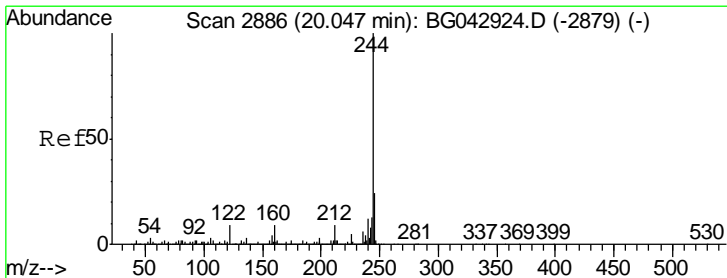
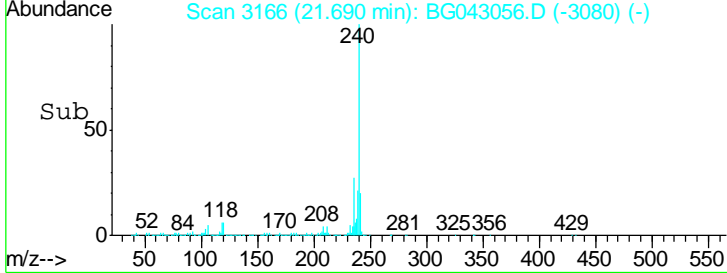
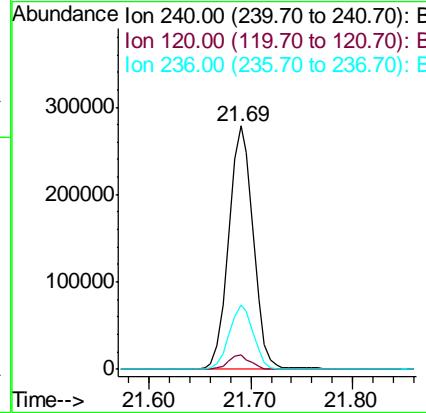
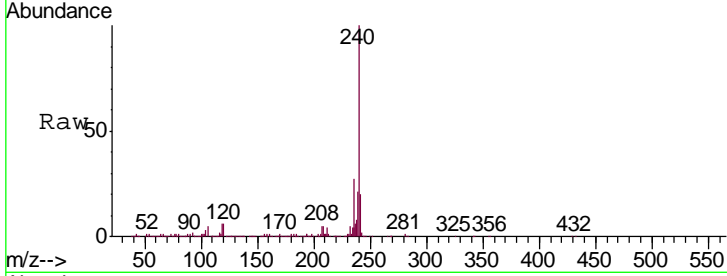
#76
 Chrysene-d12
 Concen: 20.000 ng
 RT: 21.69 min Scan# 3166
 Delta R.T. -0.03 min
 Lab File: BG043056.D
 Acq: 5 Oct 2019 15:32

Instrument :
 BNA_G
ClientSampled :
 20190879-COMPOSITE-K

| Tgt Ion | Resp | Lower | Upper |
|---------|------|-------|-------|
| 240 | 100 | | |
| 120 | 5.8 | 4.8 | 7.2 |
| 236 | 26.6 | 21.4 | 32.0 |

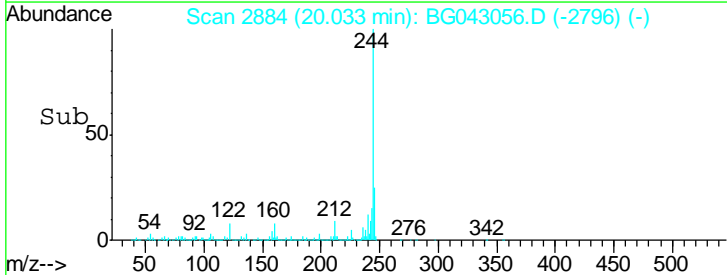
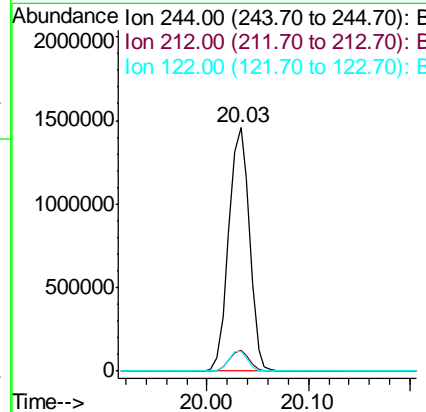
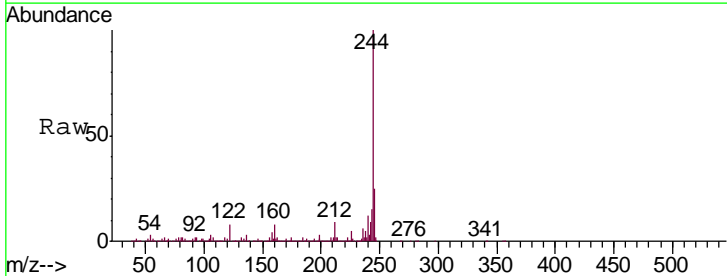
Manual Integrations
APPROVED

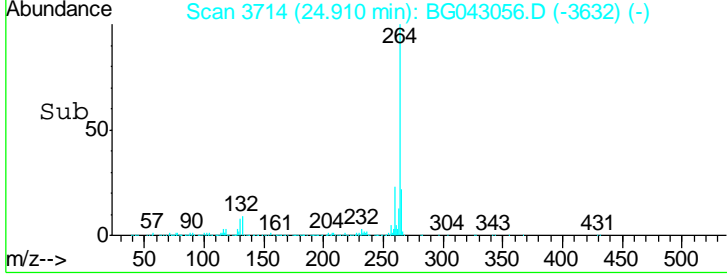
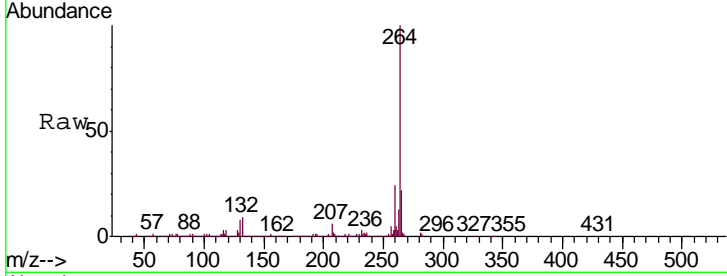
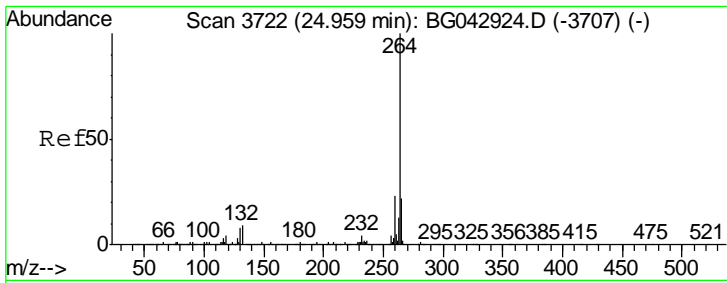
mohammad
 10/7/2019 4:39:08 PM



#79
 Terphenyl-d14
 Concen: 94.931 ng
 RT: 20.03 min Scan# 2884
 Delta R.T. -0.01 min
 Lab File: BG043056.D
 Acq: 5 Oct 2019 15:32

| Tgt Ion | Resp | Lower | Upper |
|---------|------|-------|-------|
| 244 | 100 | | |
| 212 | 8.8 | 7.4 | 11.0 |
| 122 | 8.1 | 7.0 | 10.4 |





#87
 Perylene-d12
 Concen: 20.000 ng
 RT: 24.91 min Scan# 3714
 Delta R.T. -0.05 min
 Lab File: BG043056.D
 Acq: 5 Oct 2019 15:32

| Tgt Ion | Resp | Lower | Upper |
|---------|------|-------|-------|
| 264 | 100 | | |
| 260 | 23.6 | 18.7 | 28.1 |
| 265 | 21.8 | 17.7 | 26.5 |

Instrument :
 BNA_G
ClientSampled :
 20190879-COMPOSITE-K

Manual Integrations
APPROVED
 mohammad
 10/7/2019 4:39:08 PM

