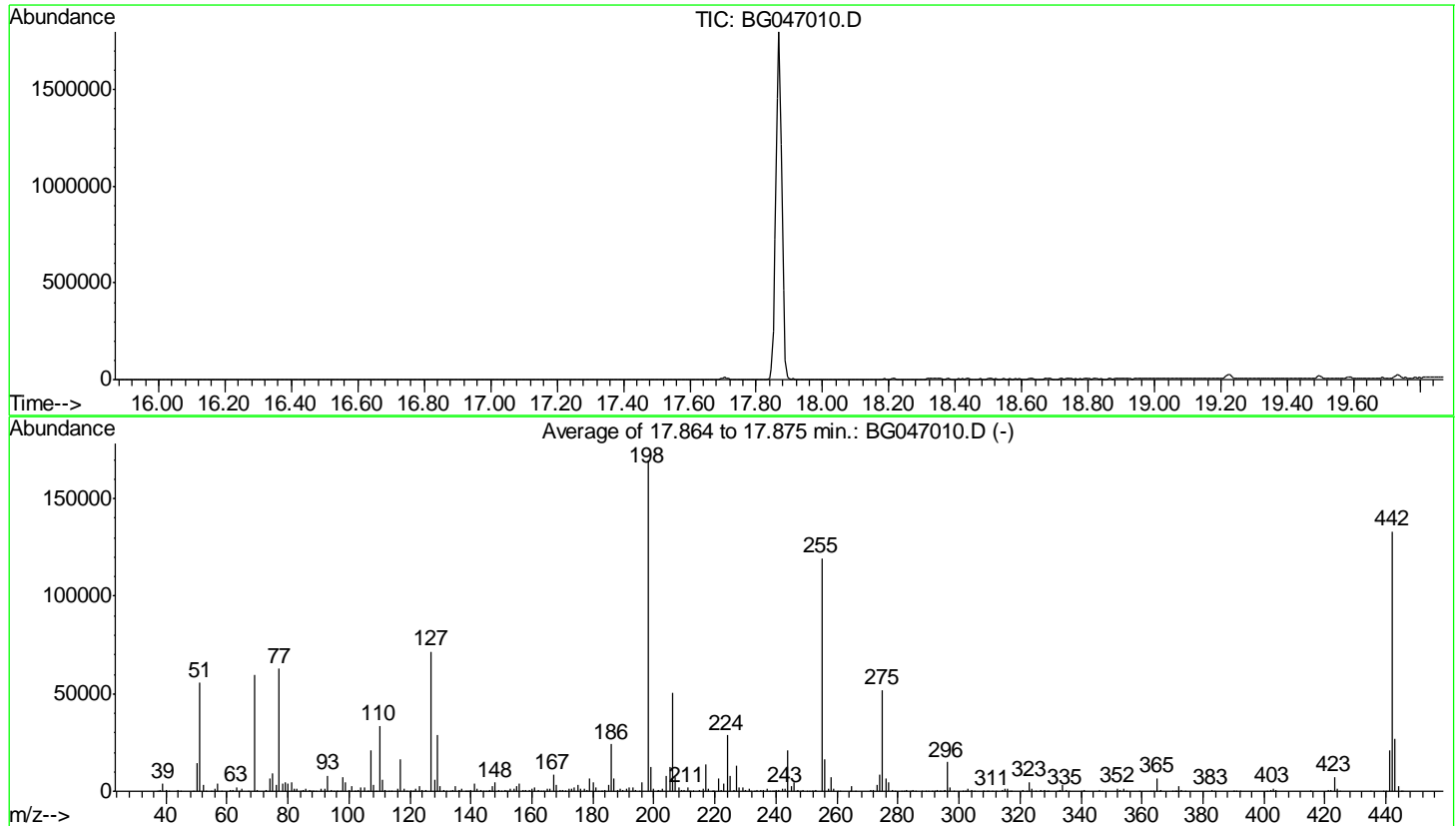


Data Path : Z:\SVOASRV\HPCHEM1\BNA_G\DATA\BG102120\
 Data File : BG047010.D
 Acq On : 21 Oct 2020 10:20
 Operator : CG/JU
 Sample : DFTPP43
 Misc :
 ALS Vial : 1 Sample Multiplier: 1

Instrument :
 BNA_G
 ClientSampleId :
 DFTPP43

Integration File: LSCINT.P

Method : Z:\SVOASRV\HPCHEM1\BNA_G\METHODS\SOM-EPA-BG101520MA.M
 Title : SVOA CALIBRATION
 Last Update : Wed Oct 21 12:10:11 2020



AutoFind: Scans 2472, 2473, 2474; Background Corrected with Scan 2466

Target Mass	Rel. to Mass	Lower Limit%	Upper Limit%	Rel. Abn%	Raw Abn	Result Pass/Fail
51	198	10	80	32.8	55664	PASS
68	69	0.00	2	0.0	0	PASS
69	198	0.00	100	35.1	59653	PASS
70	69	0.00	2	0.6	355	PASS
127	198	10	80	42.1	71536	PASS
197	198	0.00	2	0.0	0	PASS
198	198	100	100	100.0	169834	PASS
199	198	5	9	7.2	12153	PASS
275	198	10	60	30.6	51888	PASS
365	198	1	100	3.9	6651	PASS
441	198	0.01	100	12.2	20746	PASS
442	198	50	100	78.4	133213	PASS
443	442	15	24	20.0	26688	PASS

m/z	Abundance
44.10	343.0
55.90	155.0
85.80	173.0
144.70	175.0
158.20	152.0
193.10	179.0
207.00	474.0
208.10	181.0
403.40	187.0

Instrument :
BNA_G
ClientSampleId :
DFTPP43

m/z	Abundance
38.10	696.0
39.10	4641.0
40.00	729.0
41.00	168.0
44.00	768.0
45.00	187.0
50.10	18128.0
51.10	64848.0
52.10	3231.0
53.20	224.0
55.10	499.0
56.00	1672.0
57.00	4604.0
61.10	738.0
62.00	807.0
63.10	2693.0
64.10	253.0
65.00	1032.0
69.00	65496.0
70.00	422.0
73.00	515.0
74.10	6739.0
75.10	9732.0
76.10	3612.0
77.10	67936.0
78.10	4419.0
79.10	4567.0
80.10	4012.0
81.00	5008.0
82.00	910.0
83.00	1109.0
85.10	1005.0
86.00	1262.0
87.00	620.0
88.00	348.0
89.00	216.0
91.00	1242.0
92.00	1081.0
93.10	8403.0
94.00	605.0
94.90	266.0
95.90	218.0
98.00	7403.0
99.00	4892.0
100.10	413.0
101.00	3192.0
103.00	1054.0
104.00	1995.0
105.00	2243.0
106.00	979.0
107.00	22720.0
108.00	3124.0
108.90	496.0
110.00	34904.0
111.00	6393.0
112.00	989.0
113.00	203.0
113.90	155.0
116.00	2067.0
117.00	17040.0
118.10	1518.0
120.10	195.0
121.10	205.0
122.00	1506.0
123.00	2658.0
123.90	1018.0
125.10	923.0
127.00	73120.0
128.00	7046.0
129.00	30864.0
130.00	3062.0
131.10	686.0
132.00	306.0
134.00	930.0
135.10	2902.0
136.00	1051.0
137.10	1507.0
139.10	237.0
141.00	4000.0
142.10	1711.0
143.00	585.0
144.20	196.0
144.90	259.0
145.80	725.0
147.00	2077.0
148.00	4613.0
149.00	865.0
150.00	161.0
151.10	684.0
152.00	264.0
153.00	1068.0
154.00	1005.0

Instrument :
BNA_G
ClientSampleId :
DFTPP43

155.00	2517.0
156.00	3540.0
157.00	545.0
158.00	917.0
159.00	749.0
160.00	1398.0
161.00	1604.0
162.00	448.0
163.00	154.0
165.00	1697.0
166.00	1077.0
167.00	8401.0
168.00	3761.0
169.10	706.0
170.00	451.0
170.90	365.0
172.00	1649.0
173.00	1240.0
174.00	1680.0
175.10	3598.0
176.00	1156.0
177.10	1496.0
178.10	695.0
179.00	6846.0
180.00	4828.0
180.90	1961.0
181.90	214.0
182.60	254.0
183.10	327.0
184.00	808.0
185.00	3286.0
186.00	24776.0
187.00	6842.0
188.00	698.0
189.00	1667.0
189.90	335.0
191.10	947.0
192.00	1691.0
193.00	2883.0
194.00	540.0
196.00	5053.0
198.00	165376.0
199.00	11105.0
199.90	1359.0
201.20	529.0
201.60	626.0
202.90	1428.0
204.00	8362.0
205.00	11869.0
206.00	47560.0
207.10	8190.0
208.00	2163.0
208.90	849.0
210.00	549.0
211.00	1696.0
211.70	479.0
212.30	174.0
215.00	581.0
216.00	1035.0
217.00	13572.0
218.00	1788.0
218.90	256.0
219.40	221.0
221.10	6374.0
222.00	1725.0
223.00	3482.0
224.00	26416.0
225.00	7553.0
226.10	839.0
227.00	11705.0
228.00	2105.0
229.00	2416.0
230.00	788.0
231.00	1306.0
231.80	359.0
233.10	245.0
233.90	694.0
235.00	772.0
236.00	689.0
237.00	1209.0
238.10	210.0
238.90	326.0
239.90	199.0
241.00	698.0
242.00	1280.0
243.00	1775.0
244.00	19704.0
245.10	2374.0
246.00	4332.0
246.90	968.0
248.00	297.0
249.00	772.0
250.00	450.0
251.90	388.0
253.20	466.0
255.00	112224.0

Instrument :
BNA_G
ClientSampleId :
DFTPP43

256.00	15711.0
257.00	1160.0
258.00	7085.0
259.00	1060.0
260.10	272.0
264.20	174.0
265.00	2037.0
265.90	439.0
270.80	305.0
272.00	426.0
273.00	3594.0
274.00	7744.0
275.00	45856.0
276.00	6111.0
277.00	3936.0
278.10	674.0
281.10	289.0
282.90	641.0
284.00	331.0
285.00	897.0
289.20	195.0
293.00	773.0
294.00	198.0
294.90	356.0
296.00	14118.0
297.10	1894.0
301.10	259.0
302.10	331.0
303.00	1486.0
304.00	812.0
309.80	228.0
314.10	532.0
315.00	1219.0
316.00	1014.0
321.00	445.0
322.10	184.0
323.00	4302.0
324.00	1220.0
327.00	897.0
327.90	312.0
328.90	198.0
332.10	218.0
332.90	478.0
334.10	3022.0
335.10	907.0
336.10	189.0
341.10	312.0
345.90	725.0
347.00	204.0
352.10	1200.0
352.90	1211.0
354.00	944.0
355.10	186.0
365.00	5988.0
365.80	673.0
366.00	639.0
370.00	236.0
371.20	236.0
372.00	2012.0
373.00	577.0
382.90	574.0
384.00	165.0
390.90	272.0
401.00	170.0
402.00	530.0
403.00	1066.0
404.00	376.0
421.00	716.0
421.90	708.0
423.10	5492.0
424.10	1381.0
439.20	217.0
441.10	17440.0
442.10	103448.0
443.10	21032.0
444.10	2344.0
444.90	186.0

Instrument :
BNA_G
ClientSampleId :
DFTPP43

m/z	Abundance
37.10	387.0
38.20	463.0
39.10	3919.0
40.10	179.0
44.10	719.0
49.10	494.0
50.10	15822.0
51.10	64408.0
52.10	4155.0
54.90	307.0
56.10	1632.0
57.10	5228.0
58.00	245.0
61.10	702.0
62.10	965.0
63.10	2691.0
63.90	231.0
65.10	1221.0
69.00	72224.0
70.10	384.0
73.10	447.0
74.10	8038.0
75.00	11509.0
76.10	4267.0
77.10	75152.0
78.10	4937.0
79.10	5755.0
80.00	4719.0
81.10	6360.0
82.10	1841.0
83.00	1413.0
84.00	243.0
85.10	1280.0
86.00	1937.0
87.00	943.0
87.70	230.0
88.20	159.0
89.10	185.0
91.10	1027.0
92.00	1572.0
93.00	9929.0
94.00	473.0
96.20	451.0
98.10	8433.0
99.00	5090.0
99.90	530.0
101.10	2855.0
101.80	170.0
103.00	881.0
104.00	1950.0
105.00	2017.0
106.20	839.0
107.10	25296.0
108.00	4638.0
110.00	41808.0
111.00	6478.0
112.00	773.0
113.10	232.0
116.10	1507.0
117.00	20520.0
118.00	1616.0
118.80	277.0
120.30	191.0
122.00	1503.0
123.00	3846.0
124.00	944.0
125.10	1137.0
127.00	85384.0
128.10	7311.0
129.00	34176.0
130.00	3166.0
131.00	355.0
132.10	267.0
133.00	215.0
133.90	1132.0
135.00	2920.0
136.00	889.0
137.10	1332.0
138.00	489.0
138.70	156.0
140.10	754.0
141.00	5466.0
142.10	747.0
143.10	1066.0
144.10	428.0
144.90	210.0
146.00	1188.0
147.10	3328.0
148.00	5798.0
148.90	1039.0
150.00	518.0
151.00	511.0

Instrument :
BNA_G
ClientSampleId :
DFTPP43

151.70	371.0
152.00	391.0
152.90	1784.0
153.90	1634.0
155.10	3093.0
156.00	5109.0
156.90	564.0
158.10	1072.0
159.00	351.0
160.00	1837.0
161.00	2573.0
162.00	936.0
163.90	490.0
165.00	1803.0
166.00	1606.0
167.00	9223.0
168.00	3536.0
169.00	685.0
170.00	524.0
171.10	606.0
172.00	1426.0
173.10	1207.0
174.00	2169.0
175.00	4509.0
176.00	1643.0
177.00	1984.0
178.00	439.0
179.00	7396.0
180.00	5827.0
181.00	2559.0
182.00	590.0
183.10	319.0
183.90	495.0
185.00	4181.0
186.00	27880.0
187.00	9015.0
187.80	669.0
189.00	1940.0
189.90	252.0
190.90	1267.0
192.10	2286.0
193.00	2923.0
194.00	626.0
195.00	530.0
196.00	5373.0
198.00	209152.0
199.00	15613.0
200.00	1328.0
201.40	637.0
201.90	323.0
203.00	1889.0
204.00	8919.0
205.10	15596.0
206.00	62048.0
207.00	9064.0
208.00	2559.0
208.90	854.0
210.10	1599.0
211.00	2210.0
212.10	363.0
212.80	351.0
215.00	1073.0
216.10	1248.0
217.00	16392.0
218.00	2156.0
219.20	226.0
219.70	252.0
221.00	7858.0
223.00	3890.0
224.00	36592.0
225.00	9134.0
226.00	823.0
227.00	16009.0
228.00	2322.0
229.10	2696.0
229.90	206.0
231.10	1281.0
231.90	322.0
233.00	434.0
234.00	821.0
234.90	1239.0
236.00	670.0
237.00	1471.0
239.10	526.0
240.00	531.0
240.90	992.0
242.00	1836.0
243.00	2076.0
244.00	25832.0
245.00	3867.0
246.00	5544.0
247.10	915.0
248.00	265.0
249.00	1370.0
250.90	335.0
252.00	439.0

Instrument :
BNA_G
ClientSampleId :
DFTPP43

253.10	629.0
255.00	143168.0
256.00	21776.0
257.00	1517.0
258.00	7905.0
259.00	1416.0
260.00	442.0
261.00	243.0
264.10	474.0
265.00	3478.0
266.00	172.0
270.90	494.0
271.90	686.0
273.00	4241.0
274.00	11013.0
275.00	62728.0
276.00	7443.0
277.00	5477.0
278.00	1143.0
279.10	286.0
282.90	587.0
284.10	173.0
285.00	832.0
288.00	267.0
291.90	238.0
293.00	842.0
294.10	649.0
295.20	753.0
296.00	17872.0
297.00	2668.0
298.10	281.0
301.90	262.0
303.10	2086.0
304.10	321.0
305.10	172.0
308.10	241.0
309.00	185.0
310.90	315.0
312.10	155.0
314.00	649.0
315.00	2422.0
316.10	949.0
316.90	255.0
321.10	659.0
322.10	431.0
323.10	5275.0
324.10	1087.0
326.90	938.0
328.00	383.0
329.10	226.0
332.00	369.0
333.10	1000.0
334.00	3725.0
335.00	1084.0
340.00	164.0
341.00	857.0
345.90	1428.0
347.10	190.0
352.00	2068.0
353.00	1005.0
354.10	1444.0
355.10	341.0
359.10	166.0
365.00	7866.0
366.00	1279.0
370.00	183.0
370.90	540.0
372.10	2981.0
373.10	932.0
383.00	891.0
383.90	247.0
390.00	441.0
390.80	169.0
392.10	438.0
402.10	1081.0
403.00	1497.0
404.10	609.0
415.30	162.0
421.00	1232.0
422.00	1137.0
423.00	8936.0
424.10	1453.0
425.00	177.0
434.90	170.0
439.90	202.0
441.00	23592.0
442.10	158592.0
443.00	29808.0
444.10	2794.0

Instrument :
BNA_G
ClientSampleId :
DFTPP43

m/z	Abundance
37.00	215.0
38.10	478.0
39.10	2878.0
40.10	428.0
44.00	933.0
44.80	165.0
50.10	9328.0
51.10	37736.0
52.10	1842.0
53.10	189.0
56.00	1090.0
57.00	2815.0
58.00	265.0
61.10	716.0
62.10	669.0
63.10	1567.0
64.10	238.0
65.00	951.0
67.10	175.0
69.00	41240.0
70.00	259.0
72.90	254.0
74.10	4276.0
75.10	6501.0
76.10	1837.0
77.10	45696.0
78.10	2448.0
79.00	2781.0
80.00	2818.0
81.00	3388.0
82.10	995.0
83.10	646.0
84.90	547.0
86.00	1110.0
87.00	888.0
88.00	300.0
91.00	1348.0
92.10	1003.0
93.00	5957.0
94.00	420.0
96.20	418.0
97.00	176.0
98.10	5657.0
99.00	3099.0
100.10	287.0
101.10	1965.0
102.00	219.0
103.00	771.0
104.00	1651.0
104.90	1256.0
107.00	15250.0
108.00	2240.0
110.00	23896.0
111.00	4855.0
112.00	574.0
113.10	381.0
116.00	920.0
117.00	11633.0
118.00	694.0
120.00	255.0
122.10	959.0
122.90	2126.0
124.00	624.0
125.10	735.0
127.00	56104.0
128.00	3520.0
129.00	20824.0
130.00	2472.0
131.00	653.0
132.00	325.0
134.00	622.0
135.10	1696.0
136.20	712.0
137.00	993.0
139.90	476.0
140.90	3100.0
142.00	1131.0
143.00	676.0
144.10	250.0
144.90	154.0
146.10	377.0
147.00	1664.0
148.00	2715.0
149.10	842.0
151.00	364.0
151.80	157.0
153.00	1016.0
154.00	605.0
155.10	1675.0
156.10	2467.0
157.00	249.0
158.00	731.0

Instrument :
BNA_G
ClientSampleId :
DFTPP43

159.10	291.0
160.00	676.0
161.00	1096.0
161.90	389.0
164.00	263.0
165.00	1381.0
166.10	822.0
167.10	7157.0
168.00	2322.0
169.10	359.0
170.10	163.0
170.90	463.0
172.00	530.0
173.00	943.0
174.00	1666.0
175.10	2359.0
176.10	706.0
177.00	1389.0
178.10	546.0
179.00	5629.0
180.00	3208.0
181.00	1581.0
183.00	152.0
184.00	373.0
185.00	2392.0
186.10	19680.0
187.00	4815.0
188.00	370.0
188.90	957.0
190.00	593.0
191.00	1104.0
192.10	1475.0
193.00	1597.0
194.00	459.0
195.00	427.0
196.00	3915.0
198.00	134976.0
198.90	9741.0
200.00	745.0
201.50	563.0
202.90	1160.0
204.00	6404.0
205.00	10522.0
206.00	41088.0
207.00	5284.0
208.00	1995.0
209.00	743.0
210.10	661.0
211.10	1358.0
212.00	420.0
213.00	176.0
215.00	440.0
216.00	1298.0
216.90	11182.0
218.00	929.0
219.00	164.0
221.00	5555.0
223.00	3555.0
224.00	23224.0
225.00	6297.0
226.00	555.0
227.00	11451.0
228.00	1499.0
229.00	1762.0
230.10	311.0
231.10	770.0
231.90	177.0
233.90	560.0
234.90	851.0
236.10	557.0
236.90	1019.0
238.90	471.0
239.90	605.0
241.00	397.0
242.00	1596.0
243.00	1037.0
244.00	17744.0
245.10	1934.0
246.00	3752.0
247.00	864.0
248.00	341.0
249.00	639.0
249.80	169.0
252.30	328.0
253.10	368.0
255.00	103368.0
256.00	12118.0
257.10	909.0
258.00	6653.0
259.00	1080.0
259.90	153.0
260.80	213.0
264.90	2490.0
266.00	255.0
271.00	363.0
271.80	235.0

Instrument :
BNA_G
ClientSampleId :
DFTPP43

272.10	270.0
273.00	2424.0
274.00	7070.0
275.00	47080.0
276.00	6317.0
277.00	3957.0
278.00	581.0
279.20	177.0
282.10	173.0
283.00	492.0
284.00	425.0
285.00	872.0
285.90	156.0
289.80	251.0
291.10	174.0
292.00	156.0
293.00	769.0
293.70	378.0
295.10	338.0
296.00	12938.0
297.00	1825.0
301.00	331.0
303.00	1344.0
304.00	675.0
307.80	182.0
314.10	478.0
315.00	1323.0
316.10	1100.0
317.20	300.0
320.90	318.0
322.00	329.0
323.00	4344.0
324.00	1072.0
325.00	161.0
327.00	874.0
327.90	378.0
332.00	254.0
333.00	583.0
334.00	2476.0
334.90	524.0
341.10	563.0
346.00	714.0
346.90	193.0
352.00	1400.0
353.00	738.0
354.00	1229.0
354.90	281.0
363.00	191.0
363.80	151.0
365.00	6101.0
366.00	670.0
371.10	153.0
372.10	2697.0
373.10	619.0
374.30	182.0
383.00	870.0
384.00	202.0
390.20	374.0
390.80	164.0
392.00	204.0
401.00	182.0
402.00	1019.0
403.00	1728.0
404.00	618.0
415.00	170.0
421.10	1001.0
422.00	1076.0
423.10	7697.0
424.10	1218.0
425.10	171.0
439.80	215.0
441.10	21208.0
442.00	137600.0
443.10	29224.0
444.00	2568.0
445.20	180.0

Instrument :
BNA_G
ClientSampleId :
DFTPP43