



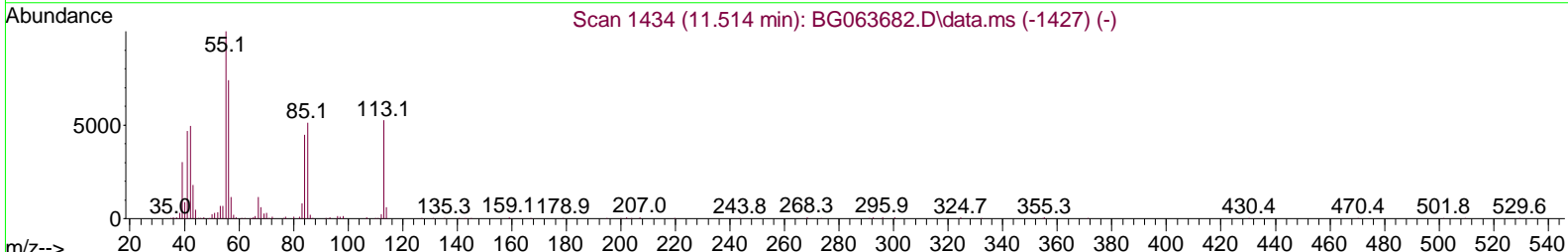
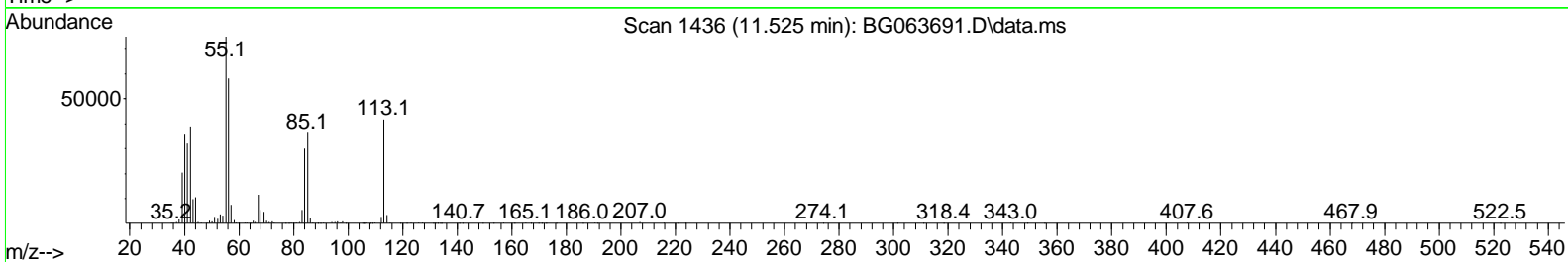
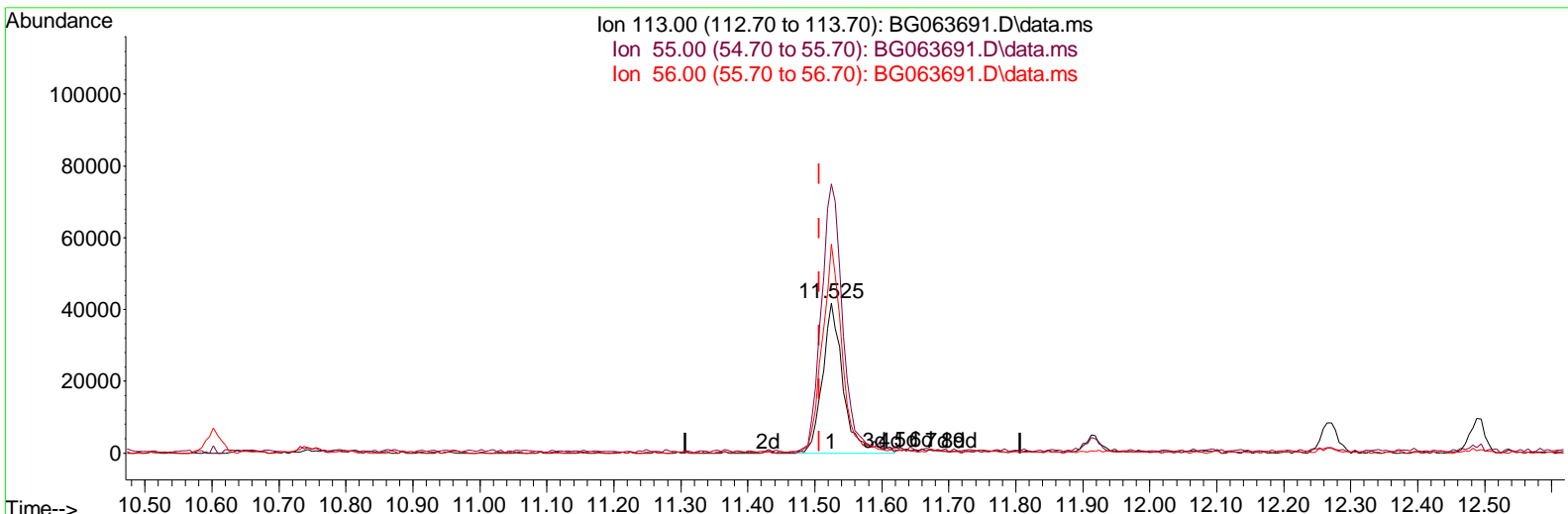
Data Path : Z:\svoasrv\HPCHEM1\BNA\_G\Data\BG121624\  
 Data File : BG063691.D  
 Acq On : 16 Dec 2024 17:16  
 Operator : RC/JU  
 Sample : SSTDCCC020EC  
 Misc :  
 ALS Vial : 2 Sample Multiplier: 1

**Instrument :**  
 BNA\_G  
**LabSampleId :**  
 SSTDCCC020EC

**Manual IntegrationsAPPROVED**

Quant Time: Dec 16 17:49:16 2024  
 Quant Method : Z:\svoasrv\HPCHEM1\BNA\_G\Methods\SFAM-EPA-BG121124.MA.M  
 Quant Title : SVOA CALIBRATION  
 QLast Update : Wed Dec 11 23:59:23 2024  
 Response via : Initial Calibration

Reviewed By :Yogesh Patel 12/18/2024  
 Supervised By :mohammad ahmed 12/18/2024



TIC: BG063691.D\data.ms

**(34) Caprolactam**

11.525min (+ 0.017) 22.81 ng/ul m

response 89902

Ion	Exp%	Act%
113.00	100.00	100.00
55.00	202.90	179.17
56.00	133.90	139.04
0.00	0.00	0.00

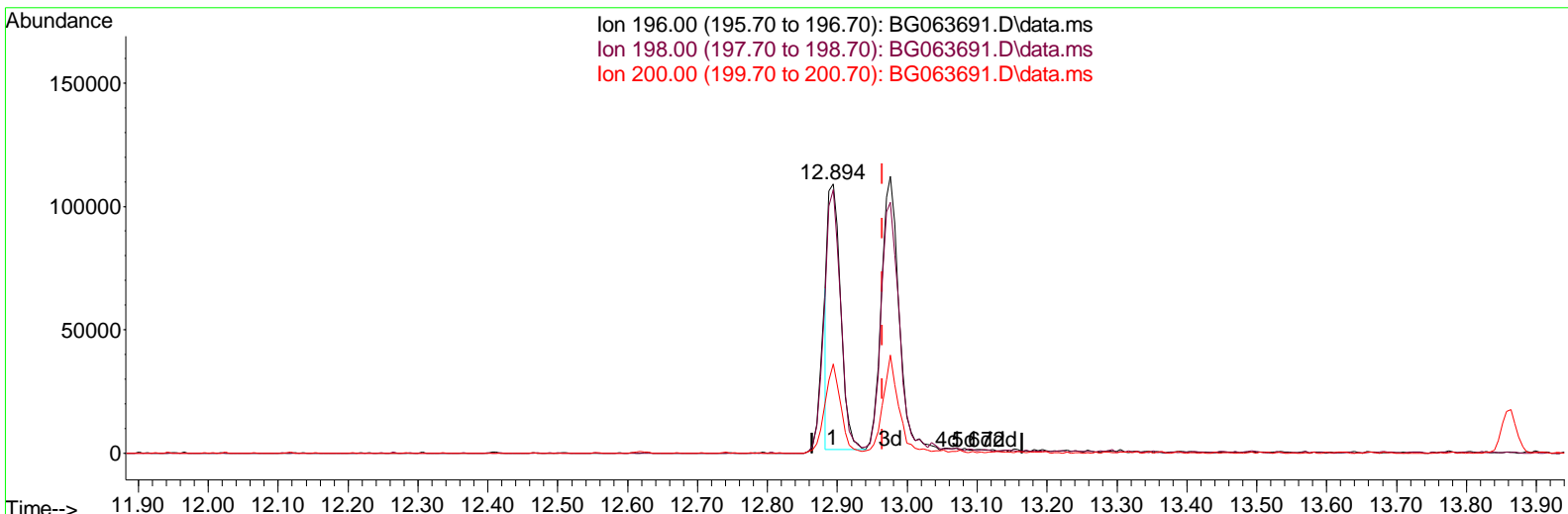
Data Path : Z:\svoasrv\HPCHEM1\BNA\_G\Data\BG121624\  
 Data File : BG063691.D  
 Acq On : 16 Dec 2024 17:16  
 Operator : RC/JU  
 Sample : SSTDCCC020EC  
 Misc :  
 ALS Vial : 2 Sample Multiplier: 1

**Instrument :**  
 BNA\_G  
**LabSampleID :**  
 SSTDCCC020EC

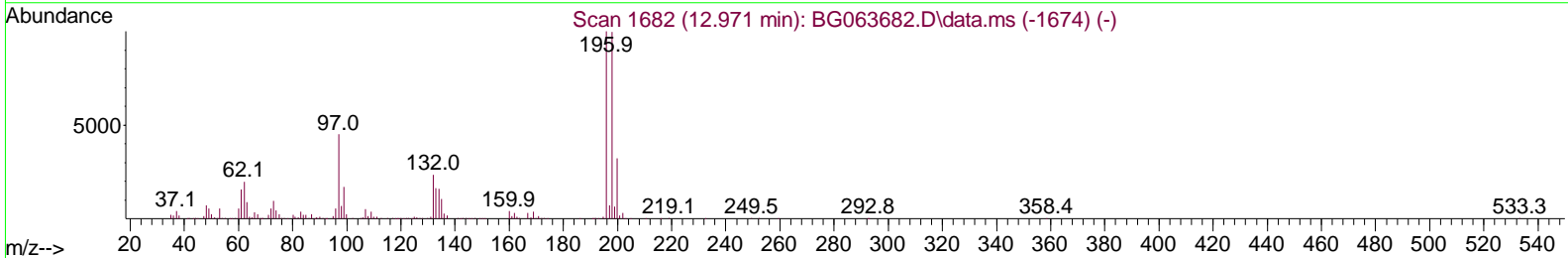
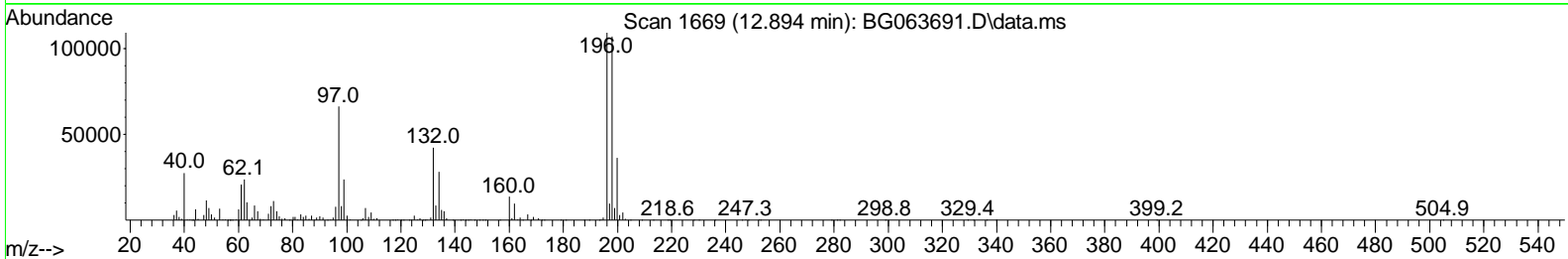
**Manual Integrations APPROVED**

Reviewed By :Yogesh Patel 12/18/2024  
 Supervised By :mohammad ahmed 12/18/2024

Quant Time: Dec 16 17:49:16 2024  
 Quant Method : Z:\svoasrv\HPCHEM1\BNA\_G\Methods\SFAM-EPA-BG121124.MA.M  
 Quant Title : SVOA CALIBRATION  
 QLast Update : Wed Dec 11 23:59:23 2024  
 Response via : Initial Calibration



Ion 196.00 (195.70 to 196.70): BG063691.D\data.ms  
 Ion 198.00 (197.70 to 198.70): BG063691.D\data.ms  
 Ion 200.00 (199.70 to 200.70): BG063691.D\data.ms



TIC: BG063691.D\data.ms

(42) 2,4,5-Trichlorophenol

12.894min (-0.071) 14.14 ng/ul

response 138609

Ion	Exp%	Act%
196.00	100.00	100.00
198.00	92.80	97.85
200.00	29.40	33.15
0.00	0.00	0.00

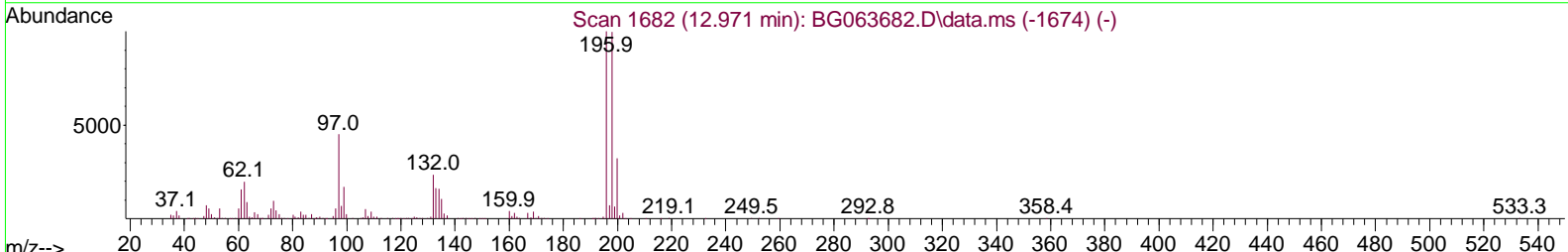
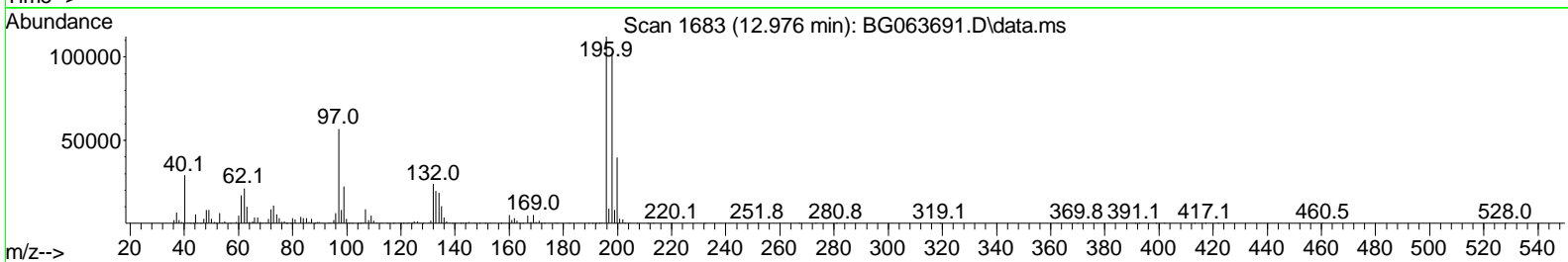
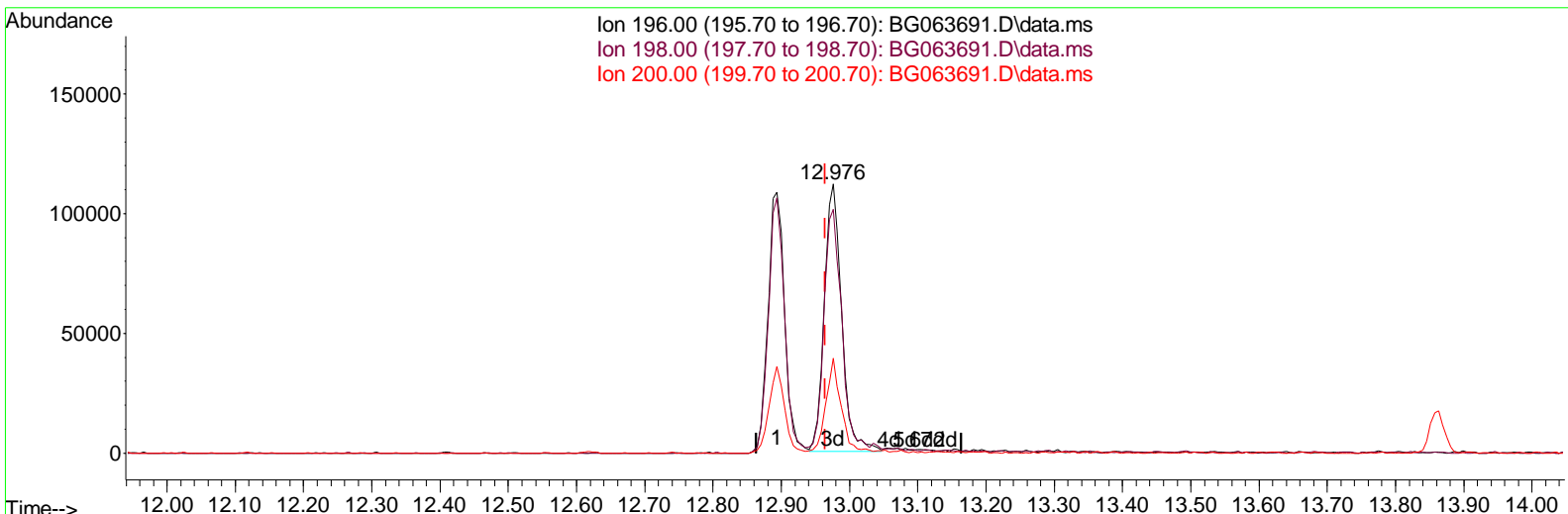
Data Path : Z:\svoasrv\HPCHEM1\BNA\_G\Data\BG121624\  
 Data File : BG063691.D  
 Acq On : 16 Dec 2024 17:16  
 Operator : RC/JU  
 Sample : SSTDCCC020EC  
 Misc :  
 ALS Vial : 2 Sample Multiplier: 1

**Instrument :**  
 BNA\_G  
**LabSampleID :**  
 SSTDCCC020EC

**Manual Integrations APPROVED**

Reviewed By :Yogesh Patel 12/18/2024  
 Supervised By :mohammad ahmed 12/18/2024

Quant Time: Dec 16 17:49:16 2024  
 Quant Method : Z:\svoasrv\HPCHEM1\BNA\_G\Methods\SFAM-EPA-BG121124.MA.M  
 Quant Title : SVOA CALIBRATION  
 QLast Update : Wed Dec 11 23:59:23 2024  
 Response via : Initial Calibration



TIC: BG063691.D\data.ms

(42) 2,4,5-Trichlorophenol

12.976min (+ 0.011) 20.09 ng/ul m

response 197017

Ion	Exp%	Act%
196.00	100.00	100.00
198.00	92.80	90.57
200.00	29.40	35.29#
0.00	0.00	0.00

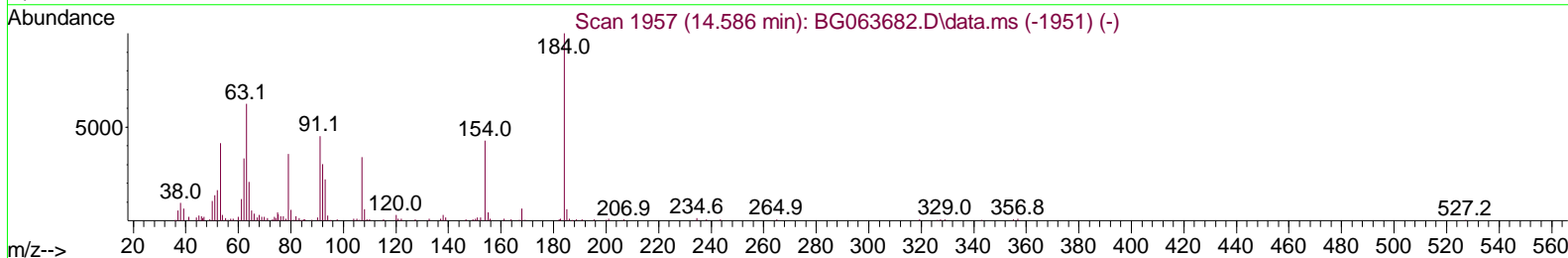
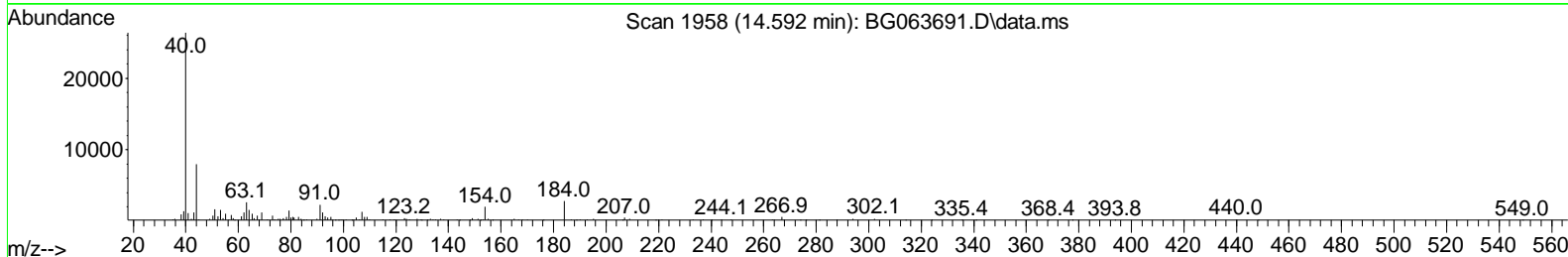
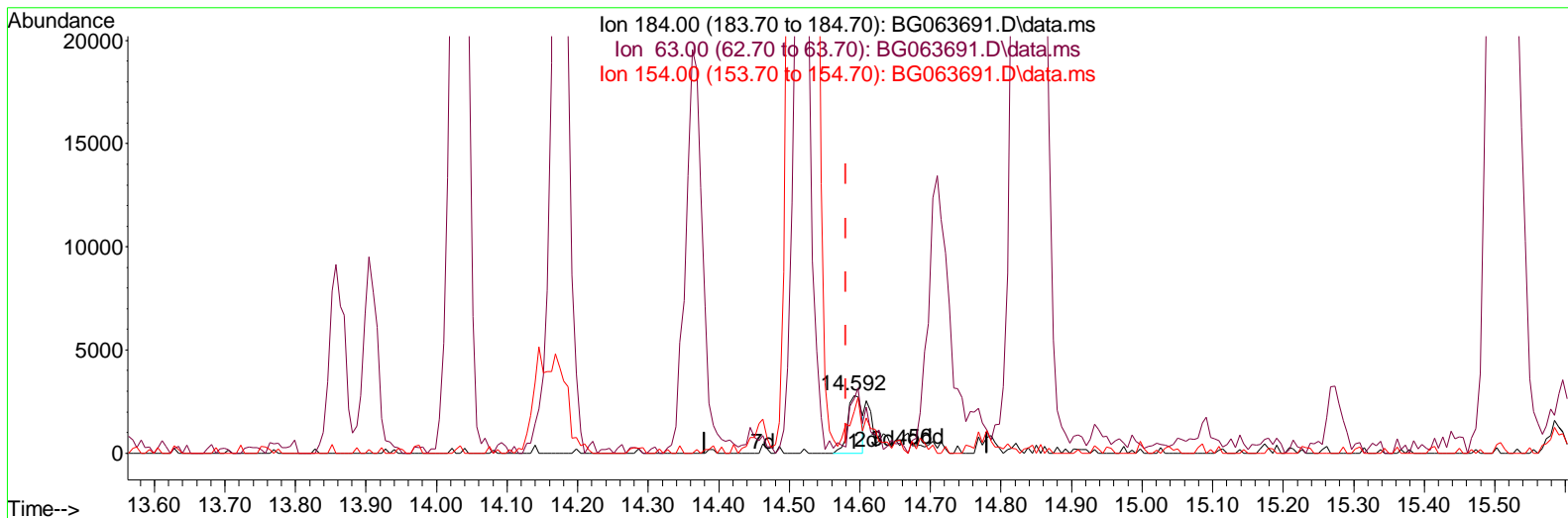
Data Path : Z:\svoasrv\HPCHEM1\BNA\_G\Data\BG121624\  
 Data File : BG063691.D  
 Acq On : 16 Dec 2024 17:16  
 Operator : RC/JU  
 Sample : SSTDCCC020EC  
 Misc :  
 ALS Vial : 2 Sample Multiplier: 1

**Instrument :**  
 BNA\_G  
**LabSampleID :**  
 SSTDCCC020EC

**Manual Integrations APPROVED**

Quant Time: Dec 16 17:49:16 2024  
 Quant Method : Z:\svoasrv\HPCHEM1\BNA\_G\Methods\SFAM-EPA-BG121124.MA.M  
 Quant Title : SVOA CALIBRATION  
 QLast Update : Wed Dec 11 23:59:23 2024  
 Response via : Initial Calibration

Reviewed By :Yogesh Patel 12/18/2024  
 Supervised By :mohammad ahmed 12/18/2024



TIC: BG063691.D\data.ms

(53) 2,4-Dinitrophenol

14.592min (+ 0.011) 1.14 ng/ul

response 3826

Ion	Exp%	Act%
184.00	100.00	100.00
63.00	65.10	94.13#
154.00	59.70	72.12#
0.00	0.00	0.00

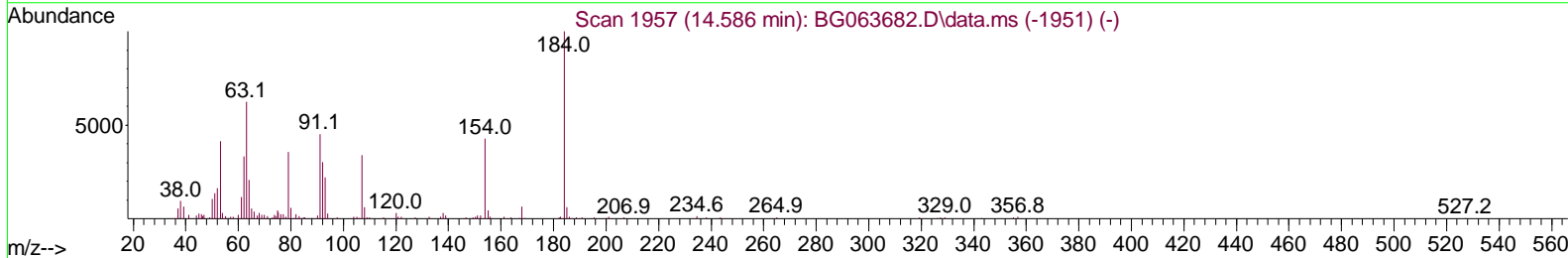
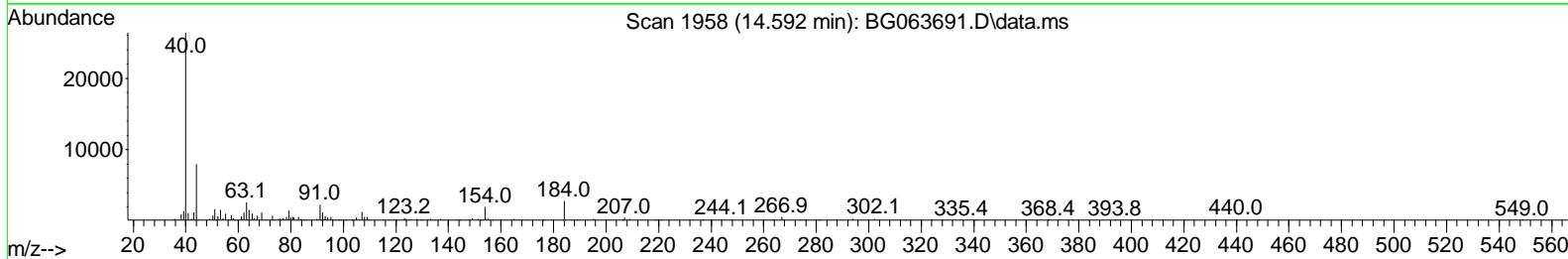
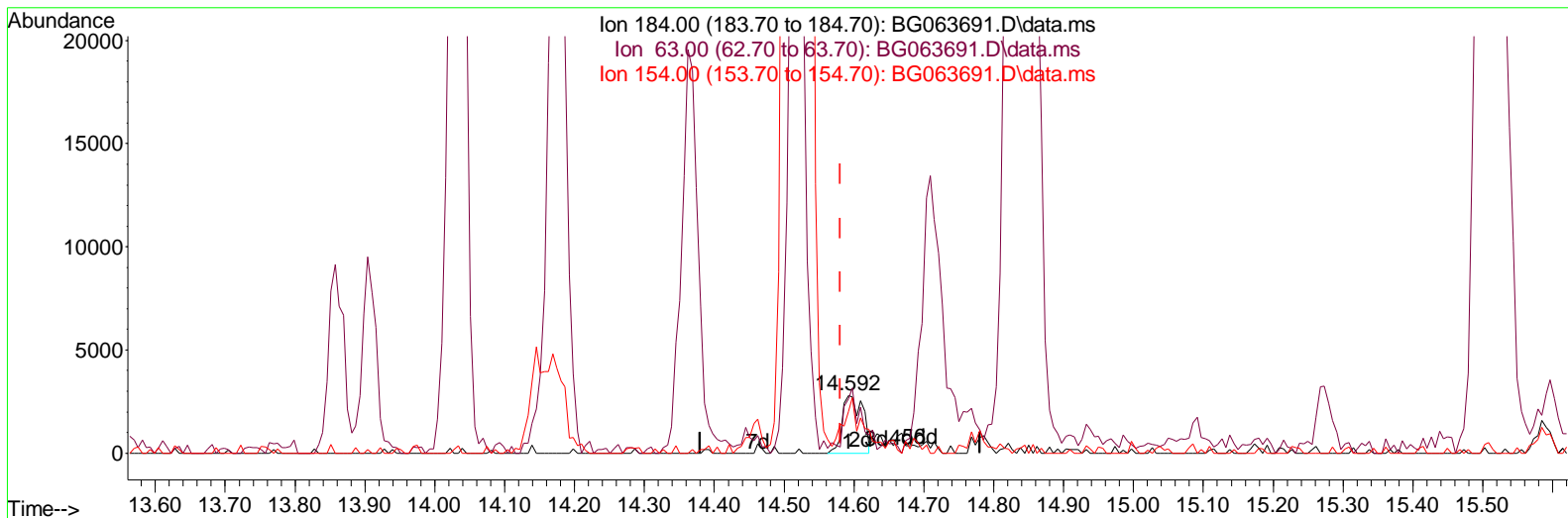
Data Path : Z:\svoasrv\HPCHEM1\BNA\_G\Data\BG121624\  
 Data File : BG063691.D  
 Acq On : 16 Dec 2024 17:16  
 Operator : RC/JU  
 Sample : SSTDCCC020EC  
 Misc :  
 ALS Vial : 2 Sample Multiplier: 1

**Instrument :**  
 BNA\_G  
**LabSampleID :**  
 SSTDCCC020EC

**Manual Integrations APPROVED**

Quant Time: Dec 16 17:49:16 2024  
 Quant Method : Z:\svoasrv\HPCHEM1\BNA\_G\Methods\SFAM-EPA-BG121124.MA.M  
 Quant Title : SVOA CALIBRATION  
 QLast Update : Wed Dec 11 23:59:23 2024  
 Response via : Initial Calibration

Reviewed By :Yogesh Patel 12/18/2024  
 Supervised By :mohammad ahmed 12/18/2024



TIC: BG063691.D\data.ms

(53) 2,4-Dinitrophenol

14.592min (+ 0.011) 1.67 ng/ul m

response 5598

Ion	Exp%	Act%
184.00	100.00	100.00
63.00	65.10	94.13#
154.00	59.70	72.12#
0.00	0.00	0.00

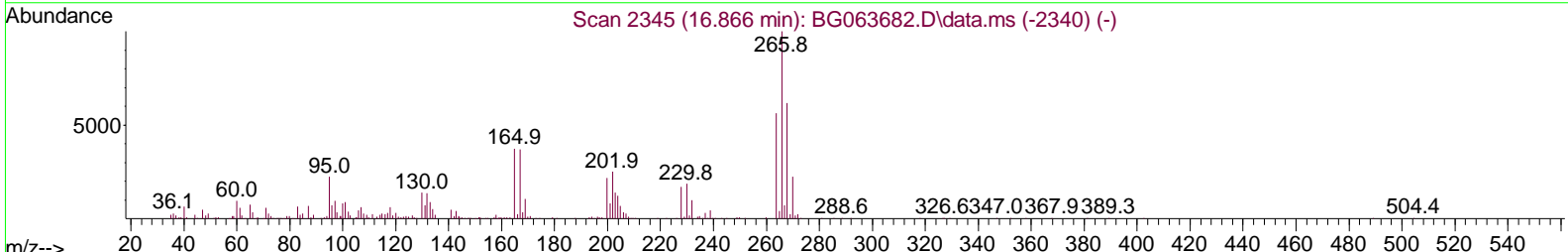
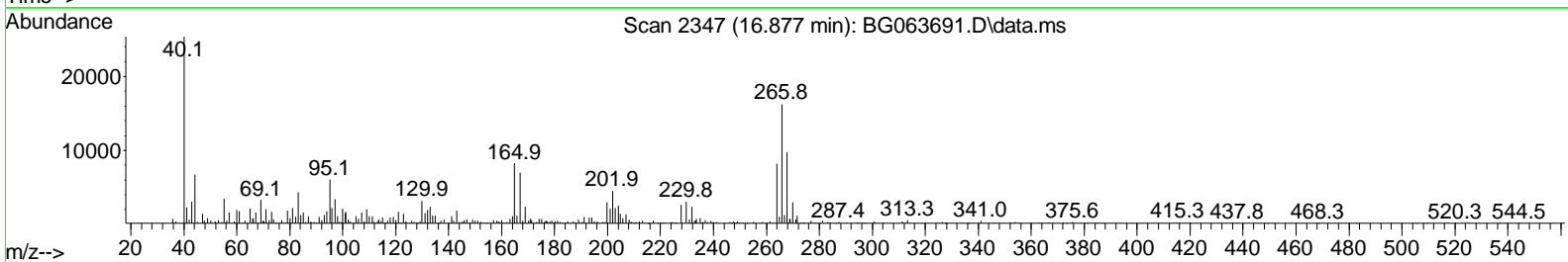
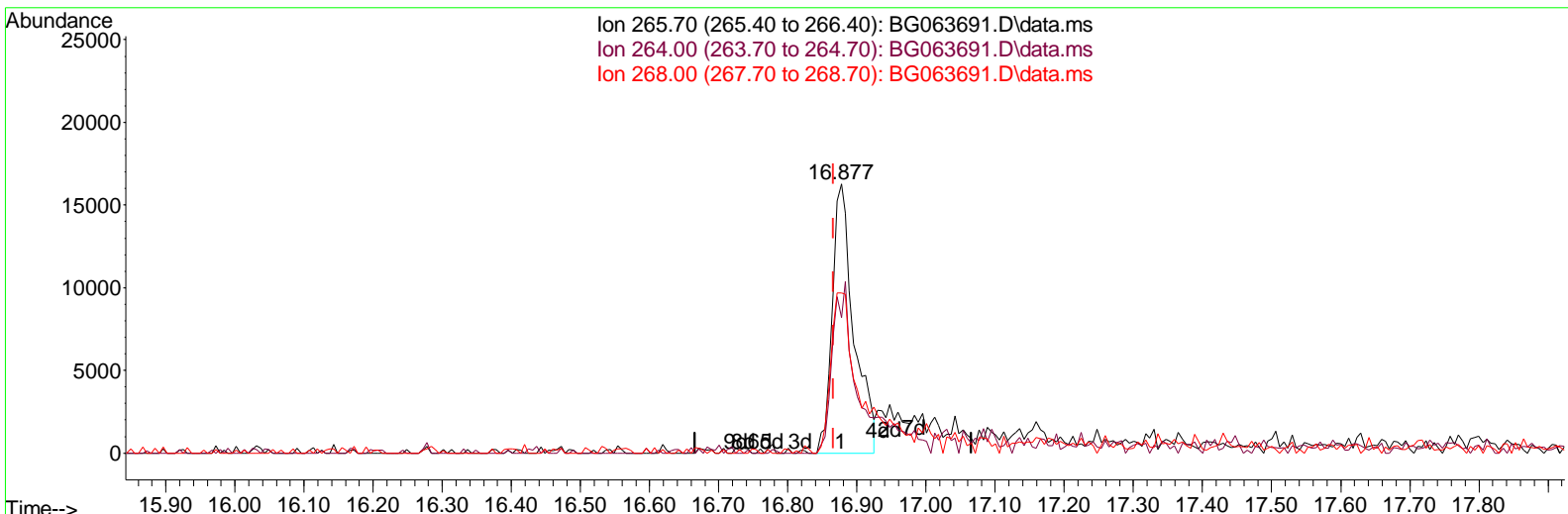
Data Path : Z:\svoasrv\HPCHEM1\BNA\_G\Data\BG121624\  
 Data File : BG063691.D  
 Acq On : 16 Dec 2024 17:16  
 Operator : RC/JU  
 Sample : SSTDCCC020EC  
 Misc :  
 ALS Vial : 2 Sample Multiplier: 1

Instrument :  
 BNA\_G  
 LabSampleID :  
 SSTDCCC020EC

Manual Integrations APPROVED

Quant Time: Dec 16 17:49:16 2024  
 Quant Method : Z:\svoasrv\HPCHEM1\BNA\_G\Methods\SFAM-EPA-BG121124.MA.M  
 Quant Title : SVOA CALIBRATION  
 QLast Update : Wed Dec 11 23:59:23 2024  
 Response via : Initial Calibration

Reviewed By :Yogesh Patel 12/18/2024  
 Supervised By :mohammad ahmed 12/18/2024



TIC: BG063691.D\data.ms

(71) Pentachlorophenol (C)

16.877min (+ 0.011) 6.58 ng/ul

response 35368

Ion	Exp%	Act%
265.70	100.00	100.00
264.00	61.60	50.38
268.00	63.10	63.90
0.00	0.00	0.00





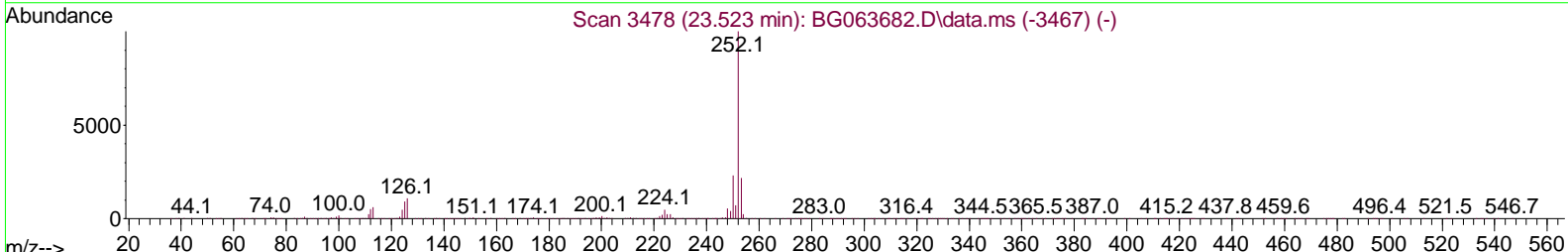
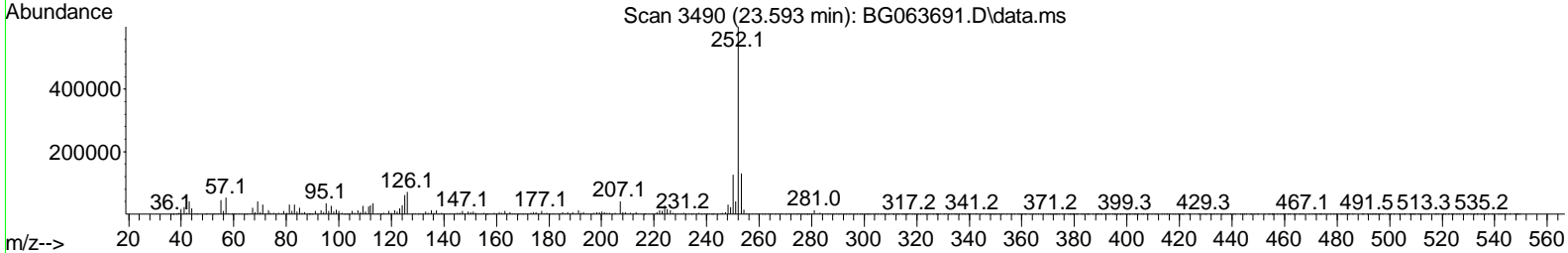
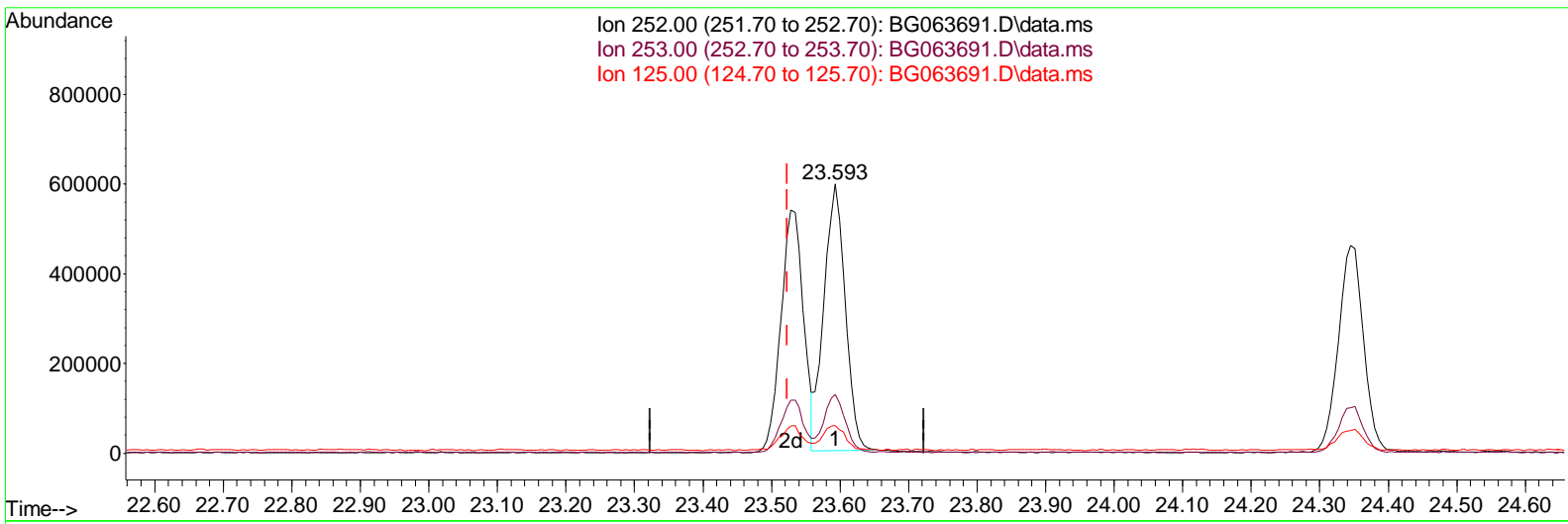
Data Path : Z:\svoasrv\HPCHEM1\BNA\_G\Data\BG121624\  
 Data File : BG063691.D  
 Acq On : 16 Dec 2024 17:16  
 Operator : RC/JU  
 Sample : SSTDCCC020EC  
 Misc :  
 ALS Vial : 2 Sample Multiplier: 1

**Instrument :**  
 BNA\_G  
**LabSampleId :**  
 SSTDCCC020EC

**Manual IntegrationsAPPROVED**

Quant Time: Dec 16 17:49:16 2024  
 Quant Method : Z:\svoasrv\HPCHEM1\BNA\_G\Methods\SFAM-EPA-BG121124.MA.M  
 Quant Title : SVOA CALIBRATION  
 QLast Update : Wed Dec 11 23:59:23 2024  
 Response via : Initial Calibration

Reviewed By :Yogesh Patel 12/18/2024  
 Supervised By :mohammad ahmed 12/18/2024



TIC: BG063691.D\data.ms

(90) Benzo(b)fluoranthene

23.593min (+ 0.070) 20.49 ng/ul

response	1280616	
Ion	Exp%	Act%
252.00	100.00	100.00
253.00	22.10	21.87
125.00	8.70	10.26
0.00	0.00	0.00

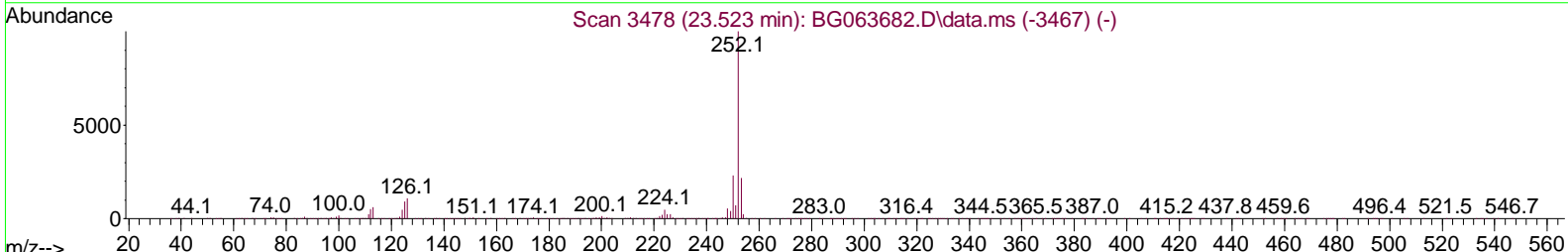
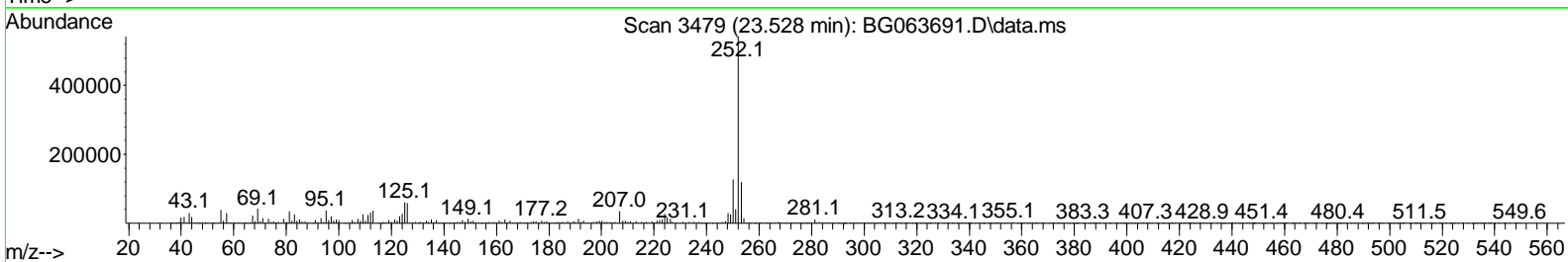
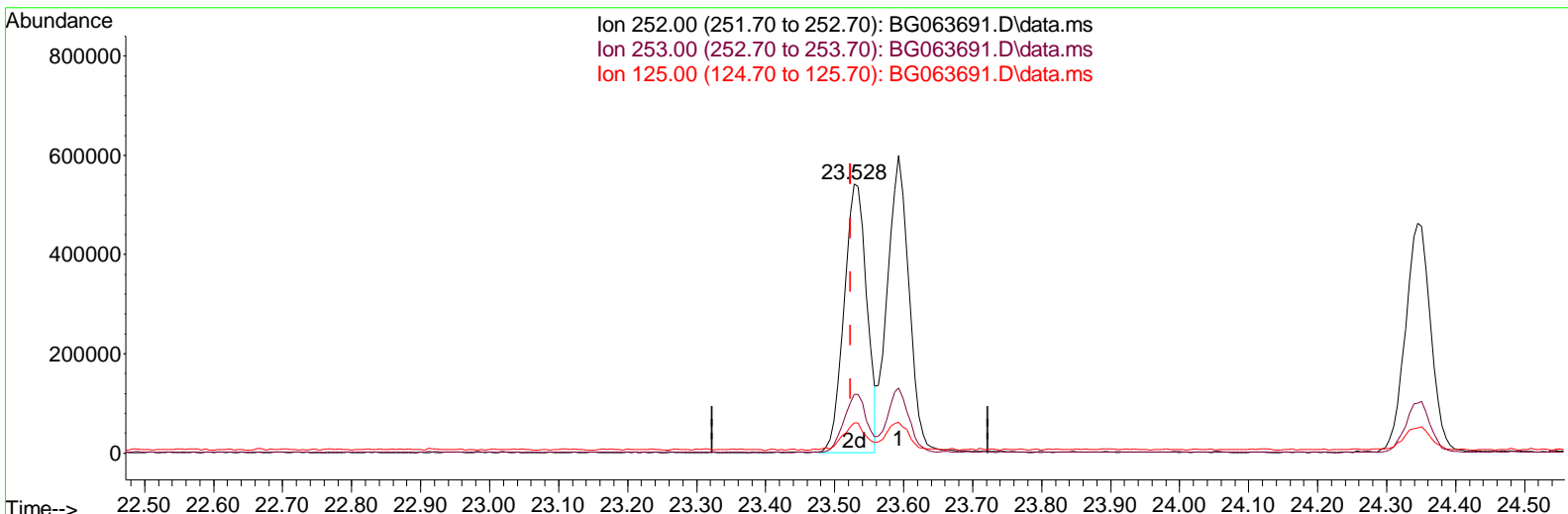
Data Path : Z:\svoasrv\HPCHEM1\BNA\_G\Data\BG121624\  
 Data File : BG063691.D  
 Acq On : 16 Dec 2024 17:16  
 Operator : RC/JU  
 Sample : SSTDCCC020EC  
 Misc :  
 ALS Vial : 2 Sample Multiplier: 1

Instrument :  
 BNA\_G  
 LabSampleId :  
 SSTDCCC020EC

Manual Integrations APPROVED

Quant Time: Dec 16 17:49:16 2024  
 Quant Method : Z:\svoasrv\HPCHEM1\BNA\_G\Methods\SFAM-EPA-BG121124.MA.M  
 Quant Title : SVOA CALIBRATION  
 QLast Update : Wed Dec 11 23:59:23 2024  
 Response via : Initial Calibration

Reviewed By :Yogesh Patel 12/18/2024  
 Supervised By :mohammad ahmed 12/18/2024



TIC: BG063691.D\data.ms

(90) Benzo(b)fluoranthene

23.528min (+ 0.005) 19.84 ng/ul m

response 1240230

Ion	Exp%	Act%
252.00	100.00	100.00
253.00	22.10	21.93
125.00	8.70	11.19#
0.00	0.00	0.00

Data Path : Z:\svoasrv\HPCHEM1\BNA\_G\Data\BG121624\  
 Data File : BG063691.D  
 Acq On : 16 Dec 2024 17:16  
 Operator : RC/JU  
 Sample : SSTDCCC020EC  
 Misc :  
 ALS Vial : 2 Sample Multiplier: 1

**Instrument :**  
 BNA\_G  
**LabSampleId :**  
 SSTDCCC020EC

**Manual IntegrationsAPPROVED**

Reviewed By :Yogesh Patel 12/18/2024  
 Supervised By :mohammad ahmed 12/18/2024

Quant Time: Dec 17 04:22:00 2024  
 Quant Method : Z:\svoasrv\HPCHEM1\BNA\_G\Methods\SFAM-EPA-BG121124.MA.M  
 Quant Title : SVOA CALI BRATI ON  
 QLast Update : Wed Dec 11 23:59:23 2024  
 Response via : Initial Calibration

Compound	R. T.	QI on	Response	Conc	Units	Dev(Min)
<b>Internal Standards</b>						
1) 1,4-Di chlorobenzene-d4	7.811	152	182954	20.000	ng/ul	0.00
20) Naphthalene-d8	10.602	136	740552	20.000	ng/ul	0.00
38) Acenaphthene-d10	14.457	164	519292	20.000	ng/ul	0.00
64) Phenanthrene-d10	17.206	188	1116172	20.000	ng/ul	0.00
79) Chrysene-d12	21.460	240	981149	20.000	ng/ul	# 0.00
88) Perylene-d12	24.486	264	1099885	20.000	ng/ul	0.00
<b>System Monitoring Compounds</b>						
3) 1,4-Dioxane-d8	3.281	96	35532	7.611	ng/uL	0.00
4) Pyridine-d5	3.687	84	275225	18.688	ng/ul	0.00
7) Phenol-d5	7.007	99	291730	17.314	ng/ul	0.01
9) Bis-(2-Chloroethyl)eth...	7.148	67	185606	15.949	ng/ul	0.00
11) 2-Chlorophenol-d4	7.353	132	212416	19.472	ng/ul	0.00
15) 4-Methylphenol-d8	8.534	113	243522	18.615	ng/ul	0.00
21) Nitrobenzene-d5	8.969	128	111893	21.161	ng/ul	0.00
24) 2-Nitrophenol-d4	9.686	143	106839	18.025	ng/ul	0.00
28) 2,4-Dichlorophenol-d3	10.238	165	231466	20.170	ng/ul	0.00
31) 4-Chloroaniline-d4	10.743	131	305621	20.975	ng/ul	0.00
46) Dimethylphthalate-d6	13.863	166	725645	20.536	ng/ul	0.00
49) Acenaphthylene-d8	14.145	160	835218	20.735	ng/ul	0.00
54) 4-Nitrophenol-d4	14.698	143	63474	12.678	ng/ul	0.02
60) Fluorene-d10	15.450	176	637859	20.417	ng/ul	0.00
65) 4,6-Dinitro-2-methylph...	15.585	200	28217	4.869	ng/ul	0.00
73) Anthracene-d10	17.306	188	1038116	21.633	ng/ul	0.00
81) Pyrene-d10	19.609	212	1079628	21.146	ng/ul	0.00
92) Benzo(a)pyrene-d12	24.280	264	1063796	20.596	ng/ul	0.00
<b>Target Compounds</b>						
2) 1,4-Dioxane	3.311	88	38649	6.995	ng/uL	99
5) Pyridine	3.704	79	281850	17.867	ng/ul	95
6) Benzaldehyde	6.954	77	200194	19.369	ng/ul	92
8) Phenol	7.030	94	318233	17.721	ng/ul	94
10) Bis(2-Chloroethyl)ether	7.236	93	245726	17.884	ng/ul	96
12) 2-Chlorophenol	7.383	128	217506	19.698	ng/ul	99
13) 2-Methylphenol	8.270	108	240069	18.496	ng/ul	95
14) 2,2'-oxybis(1-Chloropr...	8.328	45	380626	18.661	ng/ul	97
16) Acetophenone	8.628	105	408130	18.393	ng/ul	96
17) N-Nitrosodipropylamine	8.611	70	238088	17.983	ng/ul	94
18) 4-Methylphenol	8.599	108	268248	18.884	ng/ul	95
19) Hexachloroethane	8.887	117	89854	16.561	ng/ul	89
22) Nitrobenzene	9.010	77	326331	18.482	ng/ul	97
23) Isophorone	9.533	82	631352	18.924	ng/ul	98
25) 2-Nitrophenol	9.721	139	113991	18.714	ng/ul	87
26) 2,4-Dimethylphenol	9.791	107	271166	19.618	ng/ul	99
27) Bis(2-Chloroethoxy)meth...	10.015	93	344778	19.107	ng/ul	99
29) 2,4-Dichlorophenol	10.267	162	228025	19.998	ng/ul	98
30) Naphthalene	10.655	128	732606	19.787	ng/ul	98
32) 4-Chloroaniline	10.767	127	289302	20.868	ng/ul	99
33) Hexachlorobutadiene	10.937	225	162737	17.567	ng/ul	94
34) Caprolactam	11.525	113	89902m	22.809	ng/ul	
35) 4-Chloro-3-methylphenol	11.918	107	262348	19.598	ng/ul	97

Data Path : Z:\svoasrv\HPCHEM1\BNA\_G\Data\BG121624\  
 Data File : BG063691.D  
 Acq On : 16 Dec 2024 17:16  
 Operator : RC/JU  
 Sample : SSTDCCC020EC  
 Misc :  
 ALS Vial : 2 Sample Multi plier: 1

**Instrument :**  
 BNA\_G  
**LabSampleId :**  
 SSTDCCC020EC

**Manual IntegrationsAPPROVED**

Reviewed By :Yogesh Patel 12/18/2024  
 Supervised By :mohammad ahmed 12/18/2024

Quant Time: Dec 17 04:22:00 2024  
 Quant Method : Z:\svoasrv\HPCHEM1\BNA\_G\Methods\SFAM-EPA-BG121124.MA.M  
 Quant Title : SVOA CALI BRATI ON  
 QLast Update : Wed Dec 11 23:59:23 2024  
 Response via : Initial Calibrati on

Compound	R. T.	QI on	Response	Conc	Units	Dev(Min)
36) 2-Methyl naphthal ene	12.265	142	518059	19.468	ng/ul	98
37) 1-Methyl naphthal ene	12.488	142	547173	20.187	ng/ul #	96
39) 1, 2, 4, 5-Tetrachl oroben. . .	12.641	216	312125	18.776	ng/ul	96
40) Hexachl orocycl opentadi ene	12.618	237	109465	16.657	ng/ul	98
41) 2, 4, 6-Tri chl orophenol	12.894	196	184895	19.679	ng/ul	92
42) 2, 4, 5-Tri chl orophenol	12.976	196	197017m	20.092	ng/ul	
43) 1, 1' -Bi phenyl	13.282	154	725856	21.195	ng/ul	94
44) 2-Chl oronaphthal ene	13.329	162	575954	20.943	ng/ul	97
45) 2-Ni troani li ne	13.534	65	194552	21.120	ng/ul	93
47) Di methyl phthal ate	13.910	163	718465	20.288	ng/ul	98
48) 2, 6-Di ni trotol uene	14.034	165	126800	19.279	ng/ul	98
50) Acenaphthyl ene	14.175	152	881713	20.414	ng/ul	98
51) 3-Ni troani li ne	14.368	138	134173	22.065	ng/ul	96
52) Acenaphthene	14.521	153	616554	20.140	ng/ul	99
53) 2, 4-Di ni trophenol	14.592	184	5598m	1.666	ng/ul	
55) 4-Ni trophenol	14.709	109	60597	11.656	ng/ul	95
56) Di benzofuran	14.856	168	900266	20.859	ng/ul	99
57) 2, 4-Di ni trotol uene	14.827	165	177044	18.116	ng/ul	92
58) 2, 3, 4, 6-Tetrachl orophenol	15.097	232	137473	16.264	ng/ul #	95
59) Di ethyl phthal ate	15.273	149	701768	20.498	ng/ul	98
61) Fl uorene	15.508	166	714089	20.721	ng/ul	98
62) 4-Chl orophenyl -phenyl e. . .	15.497	204	373272	19.442	ng/ul	99
63) 4-Ni troani li ne	15.532	138	144719	23.772	ng/ul	87
66) 4, 6-Di ni tro-2-methyl ph. . .	15.602	198	30915	5.178	ng/ul #	90
67) N-Ni trosodi phenyl ami ne	15.714	169	618768	22.893	ng/ul	98
68) 4-Bromophenyl -phenyl ether	16.395	248	239892	21.089	ng/ul	94
69) Hexachl orobenzene	16.519	284	259742	20.380	ng/ul	98
70) Atrazi ne	16.672	200	256587	22.458	ng/ul	98
71) Pentachl orophenol	16.877	266	45188m	8.409	ng/ul	
72) Phenanthrene	17.247	178	1167118	21.699	ng/ul	100
74) Anthracene	17.341	178	1193962	21.931	ng/ul	99
75) 1, 2, 3, 4-Tetrachl oroben. . .	13.252	216	319768	21.472	ng/ul	91
76) Pentachl orobenzene	14.780	250	313370	21.241	ng/ul	100
77) Carbazol e	17.618	167	1030872	23.393	ng/ul	98
78) Di -n-butyl phthal ate	18.170	149	1246744	23.426	ng/ul	98
80) Fl uoranthene	19.274	202	1295721	22.328	ng/ul	99
82) Pyrene	19.633	202	1342455	21.744	ng/ul #	94
83) Butyl benzyl phthal ate	20.526	149	512362	27.034	ng/ul	99
84) 3, 3' -Di chl orobenzi di ne	21.360	252	355104	20.049	ng/ul #	93
85) Benzo(a)anthracene	21.443	228	1239188	20.153	ng/ul	99
86) Bi s(2-ethyl hexyl )phtha. . .	21.354	149	757227	27.466	ng/ul	99
87) Chrysene	21.501	228	1188842	20.286	ng/ul	98
89) Di -n-octyl phthal ate	22.488	149	1360585	28.660	ng/ul	100
90) Benzo(b)fl uoranthene	23.528	252	1240230m	19.840	ng/ul	
91) Benzo(k)fl uoranthene	23.593	252	1281964	20.559	ng/ul #	98
93) Benzo(a)pyrene	24.345	252	1179071	20.095	ng/ul	98
94) I ndeno(1, 2, 3-cd)pyrene	27.906	276	1518642	21.193	ng/ul	97
95) Di benzo(a, h)anthracene	27.953	278	1236405	21.564	ng/ul #	94
96) Benzo(g, h, i )peryl ene	28.981	276	1172148	20.614	ng/ul	98

(#) = qual i fier out of range (m) = manual i ntegrati on (+) = signal s summed

**Instrument :**

BNA\_G

**LabSampleId :**

SSTDCCC020EC

**Manual IntegrationsAPPROVED**

Reviewed By :Yogesh Patel 12/18/2024

Supervised By :mohammad ahmed 12/18/2024

Data Path : Z:\svoasrv\HPCHEM1\BNA\_G\Data\BG121624\  
 Data File : BG063691.D  
 Acq On : 16 Dec 2024 17:16  
 Operator : RC/JU  
 Sample : SSTDCCC020EC  
 Misc :  
 ALS Vial : 2 Sample Multiplier: 1

**Instrument :**  
 BNA\_G  
**Lab Sample Id :**  
 SSTDCCC020EC

**Manual Integrations APPROVED**  
 Reviewed By : Yogesh Patel 12/18/2024  
 Supervised By : mohammad ahmed 12/18/2024

Quant Time: Dec 17 04:22:00 2024  
 Quant Method : Z:\svoasrv\HPCHEM1\BNA\_G\Methods\SFAM-EPA-BG121124.MA.M  
 Quant Title : SVOA CALIBRATION  
 QLast Update : Wed Dec 11 23:59:23 2024  
 Response via : Initial Calibration

