

Data Path : Z:\HPCHEM1\BNA G\DATA\BG080515\
 Data File : BG018281.D
 Acq On : 5 Aug 2015 21:27
 Operator : UM/TP
 Sample : PB84870BL
 Misc :
 ALS Vial : 11 Sample Multiplier: 1

Instrument :
 BNA_G
 ClientSampleId :
 PB84870BL

Integration Parameters: LSCINT.P

Integrator: RTE
 Smoothing : OFF
 Sampling : 1
 Start Thrs: 0.2
 Stop Thrs : 0

Filtering: 5
 Min Area: 0.1 % of largest Peak
 Max Peaks: 100
 Peak Location: TOP

If leading or trailing edge < 100 prefer < Baseline drop else tangent >
 Peak separation: 5

Method : Z:\HPCHEM1\BNA G\METHODS\SOM02.2-EPA-BG080515.M
 Title : SVOA CALIBRATION

Signal : TIC

peak #	R.T. min	first scan	max scan	last scan	PK TY	peak height	corr. area	corr. % max.	% of total
1	2.903	34	36	40	rVB3	4383	4594	0.47%	0.050%
2	3.449	127	129	130	rBV2	3664	2585	0.27%	0.028%
3	3.590	152	153	158	rBV4	1676	2043	0.21%	0.022%
4	3.807	188	190	192	rBV	1991	2398	0.25%	0.026%
5	3.931	209	211	216	rVB2	2405	3834	0.39%	0.042%
6	4.078	233	236	237	rVB3	1855	1751	0.18%	0.019%
7	4.524	310	312	314	rVB3	2033	1974	0.20%	0.022%
8	4.659	332	335	336	rBV	1845	1946	0.20%	0.021%
9	4.706	341	343	346	rVB	2109	1822	0.19%	0.020%
10	4.742	346	349	350	rBV	2580	2239	0.23%	0.025%
11	4.794	355	358	360	rBV	1937	2621	0.27%	0.029%
12	4.847	364	367	368	rBV2	1894	1679	0.17%	0.018%
13	4.994	391	392	395	rVB3	2197	1703	0.18%	0.019%
14	5.053	400	402	405	rVB2	1479	1781	0.18%	0.019%
15	5.247	431	435	436	rVV	1363	1674	0.17%	0.018%
16	5.335	448	450	453	rVB2	3004	2475	0.25%	0.027%
17	5.376	453	457	459	rBV3	2430	2745	0.28%	0.030%
18	5.429	464	466	469	rBV2	2283	2312	0.24%	0.025%
19	5.641	499	502	503	rBV	2346	2573	0.26%	0.028%
20	5.811	530	531	534	rBV2	1847	1792	0.18%	0.020%
21	5.964	554	557	559	rBV	1466	1968	0.20%	0.022%
22	6.034	568	569	573	rBV2	1560	1800	0.18%	0.020%
23	6.210	597	599	601	rBV	2278	2936	0.30%	0.032%
24	6.557	656	658	662	rBV2	1612	2110	0.22%	0.023%
25	6.633	665	671	680	rVB	116582	181599	18.66%	1.988%
26	6.775	690	695	703	rVV	88941	133138	13.68%	1.457%
27	6.886	711	714	716	rBV3	1996	2351	0.24%	0.026%
28	6.968	722	728	736	rBV	132366	203091	20.87%	2.223%
29	7.051	741	742	748	rVB	1317	1700	0.17%	0.019%
30	7.145	756	758	761	rVB	1625	1658	0.17%	0.018%
31	7.192	764	766	770	rVB	2476	2432	0.25%	0.027%
32	7.239	770	774	776	rBV2	1811	2682	0.28%	0.029%
33	7.427	801	806	818	rVB	107278	168095	17.28%	1.840%
34	7.550	826	827	830	rBV2	2626	2675	0.27%	0.029%

Data Path : Z:\HPCHEM1\BNA G\DATA\BG080515\
 Data File : BG018281.D
 Acq On : 5 Aug 2015 21:27
 Operator : UM/TP
 Sample : PB84870BL
 Misc :
 ALS Vial : 11 Sample Multiplier: 1

Instrument :
 BNA_G
 ClientSampleId :
 PB84870BL

Integration Parameters: LSCINT.P

Integrator: RTE
 Smoothing : OFF
 Sampling : 1
 Start Thrs: 0.2
 Stop Thrs : 0

Filtering: 5
 Min Area: 0.1 % of largest Peak
 Max Peaks: 100
 Peak Location: TOP

If leading or trailing edge < 100 prefer < Baseline drop else tangent >
 Peak separation: 5

Method : Z:\HPCHEM1\BNA G\METHODS\SOM02.2-EPA-BG080515.M
 Title : SVOA CALIBRATION

35	7.650	841	844	846	rBV2	1416	1869	0.19%	0.020%
36	8.167	926	932	940	rVB	159531	251802	25.88%	2.756%
37	8.584	997	1003	1010	rBV	128380	205587	21.13%	2.251%
38	8.925	1058	1061	1064	rBV	1646	2251	0.23%	0.025%
39	9.078	1083	1087	1089	rBV	1281	1664	0.17%	0.018%
40	9.260	1116	1118	1120	rBV	1860	2260	0.23%	0.025%
41	9.307	1120	1126	1137	rVB2	129275	203213	20.88%	2.225%
42	9.853	1212	1219	1229	rBV	171935	280047	28.78%	3.066%
43	10.047	1250	1252	1256	rVB	1874	1931	0.20%	0.021%
44	10.212	1272	1280	1288	rBV	157740	255142	26.22%	2.793%
45	10.364	1297	1306	1314	rBV2	159483	279017	28.68%	3.054%
46	10.858	1387	1390	1391	rVB2	2098	1806	0.19%	0.020%
47	11.387	1478	1480	1482	rBV2	1872	1778	0.18%	0.019%
48	11.634	1520	1522	1524	rBV2	1756	2085	0.21%	0.023%
49	11.874	1558	1563	1564	rBV2	1616	1720	0.18%	0.019%
50	12.691	1700	1702	1705	rVB2	2304	2041	0.21%	0.022%
51	13.261	1796	1799	1802	rVB2	1674	2044	0.21%	0.022%
52	13.531	1838	1845	1852	rBV	379268	502419	51.63%	5.500%
53	13.802	1885	1891	1897	rVV	362020	508306	52.24%	5.564%
54	14.113	1938	1944	1953	rVB2	254487	385467	39.62%	4.220%
55	14.366	1982	1987	1997	rBV2	133929	206298	21.20%	2.258%
56	14.783	2055	2058	2061	rBV	1829	2461	0.25%	0.027%
57	15.118	2107	2115	2122	rBV	469996	668324	68.69%	7.316%
58	15.259	2134	2139	2147	rBV	163585	232154	23.86%	2.541%
59	15.317	2147	2149	2152	rVV3	2692	2560	0.26%	0.028%
60	15.353	2152	2155	2158	rVB2	2551	3019	0.31%	0.033%
61	15.693	2210	2213	2215	rVB2	2174	2395	0.25%	0.026%
62	15.746	2220	2222	2224	rBV2	2130	1815	0.19%	0.020%
63	15.928	2250	2253	2257	rVB	1683	1831	0.19%	0.020%
64	16.034	2269	2271	2273	rBV2	2876	1777	0.18%	0.019%
65	16.510	2348	2352	2354	rVB	1862	2693	0.28%	0.029%
66	16.551	2354	2359	2360	rBV	1644	1828	0.19%	0.020%
67	16.657	2375	2377	2379	rBV2	4066	2765	0.28%	0.030%
68	16.769	2391	2396	2397	rBV	1931	2317	0.24%	0.025%
69	16.869	2406	2413	2423	rBV	395831	559187	57.47%	6.121%
70	16.968	2423	2430	2438	rVV	587149	818852	84.16%	8.964%
71	17.033	2438	2441	2444	rVB2	3330	3466	0.36%	0.038%

Data Path : Z:\HPCHEM1\BNA G\DATA\BG080515\
 Data File : BG018281.D
 Acq On : 5 Aug 2015 21:27
 Operator : UM/TP
 Sample : PB84870BL
 Misc :
 ALS Vial : 11 Sample Multiplier: 1

Instrument :
 BNA_G
 ClientSampleId :
 PB84870BL

Integration Parameters: LSCINT.P

Integrator: RTE
 Smoothing : OFF Filtering: 5
 Sampling : 1 Min Area: 0.1 % of largest Peak
 Start Thrs: 0.2 Max Peaks: 100
 Stop Thrs : 0 Peak Location: TOP

If leading or trailing edge < 100 prefer < Baseline drop else tangent >
 Peak separation: 5

Method : Z:\HPCHEM1\BNA G\METHODS\SOM02.2-EPA-BG080515.M
 Title : SVOA CALIBRATION

72	17.180	2463	2466	2468	rBV	1607	1794	0.18%	0.020%
73	17.315	2488	2489	2494	rBV2	1457	2472	0.25%	0.027%
74	17.550	2528	2529	2532	rBV	2345	1826	0.19%	0.020%
75	17.750	2561	2563	2566	rBV	3012	3136	0.32%	0.034%
76	17.773	2566	2567	2570	rBV2	1764	1804	0.19%	0.020%
77	17.909	2588	2590	2593	rVB	2391	2642	0.27%	0.029%
78	18.061	2612	2616	2617	rBV	1389	1785	0.18%	0.020%
79	18.108	2622	2624	2628	rVB2	2058	2153	0.22%	0.024%
80	18.290	2653	2655	2657	rBV2	2284	1697	0.17%	0.019%
81	18.384	2668	2671	2673	rBV	1753	1905	0.20%	0.021%
82	18.467	2684	2685	2688	rBV2	2624	1790	0.18%	0.020%
83	18.567	2699	2702	2703	rBV	2171	2154	0.22%	0.024%
84	18.637	2713	2714	2716	rBV	1945	1670	0.17%	0.018%
85	18.678	2719	2721	2722	rVV2	2495	1789	0.18%	0.020%
86	18.719	2726	2728	2731	rBV2	1544	2487	0.26%	0.027%
87	18.766	2734	2736	2738	rBV	3287	3140	0.32%	0.034%
88	18.907	2758	2760	2761	rBV	2658	1767	0.18%	0.019%
89	19.054	2782	2785	2786	rBV3	2981	2661	0.27%	0.029%
90	19.125	2796	2797	2800	rBV3	5142	3029	0.31%	0.033%
91	19.166	2802	2804	2807	rVB2	5926	6057	0.62%	0.066%
92	19.283	2818	2824	2831	rBV	718787	973026	100.00%	10.652%
93	19.430	2847	2849	2850	rBV2	3537	2053	0.21%	0.022%
94	19.659	2887	2888	2890	rBV	3504	2853	0.29%	0.031%
95	19.701	2893	2895	2896	rVV2	3958	2497	0.26%	0.027%
96	19.765	2904	2906	2907	rBV2	3899	2517	0.26%	0.028%
97	20.376	3008	3010	3011	rBV2	4814	2956	0.30%	0.032%
98	21.081	3125	3130	3136	rVB	563145	655756	67.39%	7.178%
99	23.102	3467	3474	3483	rVB	431059	774688	79.62%	8.480%
100	23.238	3491	3497	3504	rVB	281757	509979	52.41%	5.583%

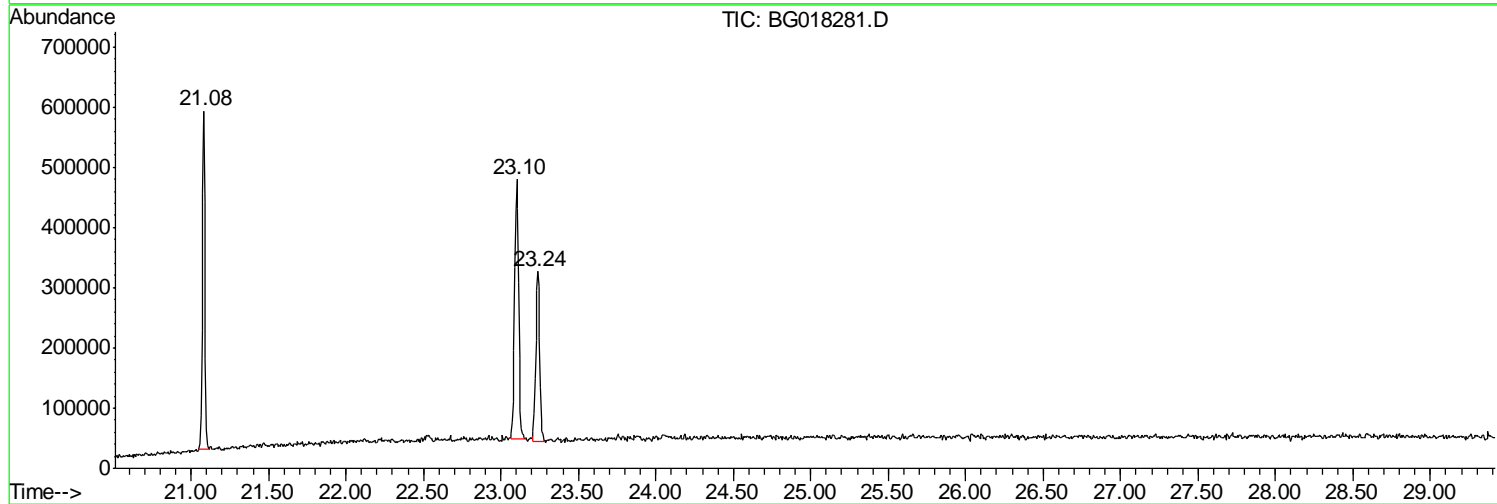
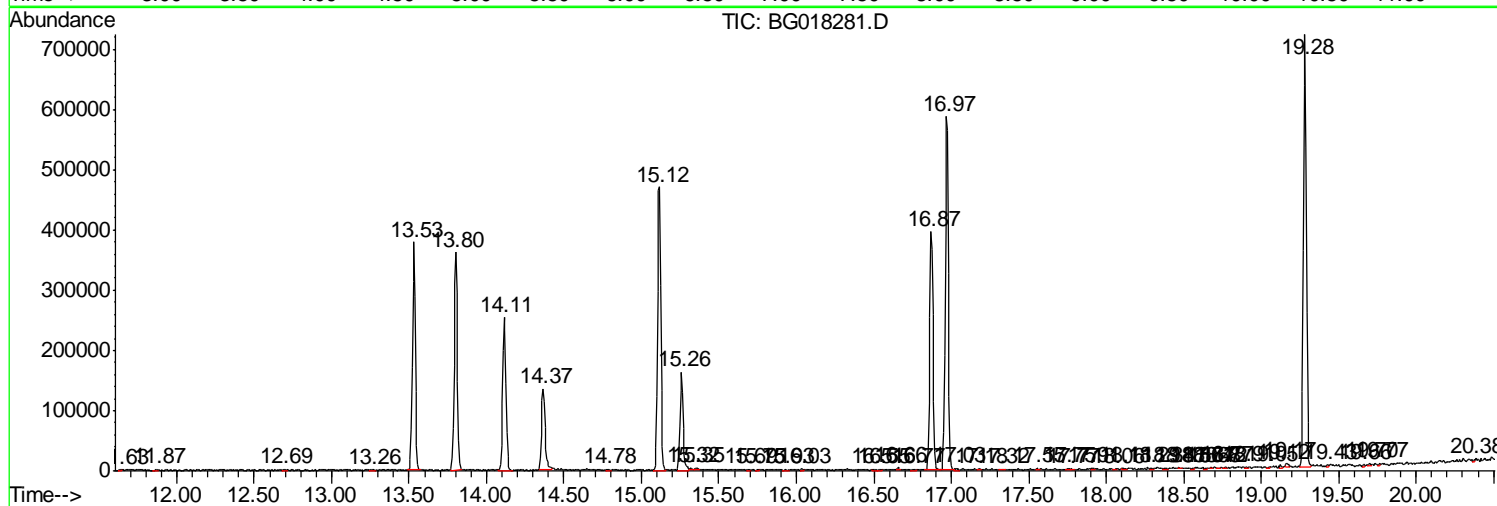
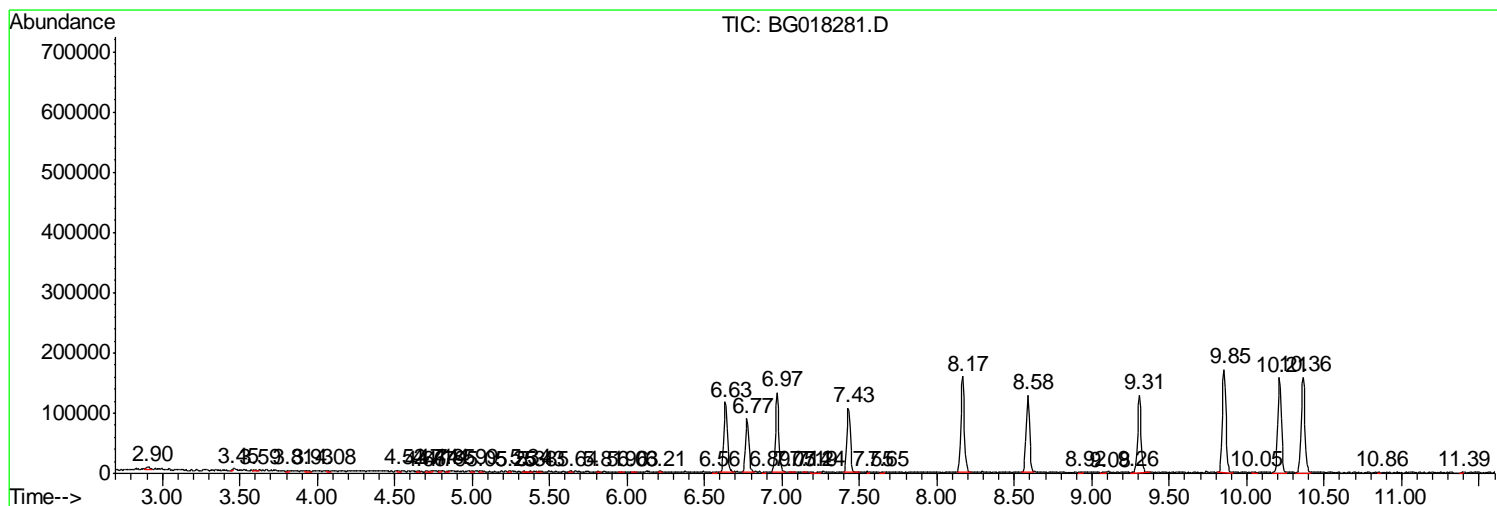
Sum of corrected areas: 9135050

Data Path : Z:\HPCHEM1\BNA G\DATA\BG080515\
 Data File : BG018281.D
 Acq On : 5 Aug 2015 21:27
 Operator : UM/TP
 Sample : PB84870BL
 Misc :
 ALS Vial : 11 Sample Multiplier: 1

Instrument :
 BNA_G
 ClientSampled :
 PB84870BL

Quant Method : Z:\HPCHEM1\BNA G\METHODS\SOM02.2-EPA-BG080515.M
 Quant Title : SVOA CALIBRATION

TIC Library : C:\DATABASE\NIST02.L
 TIC Integration Parameters: LSCINT.P



Data_Path_ : Z:\HPCHEM1\BNA_G\DATA\BG080515\
Data_File_ : BG018281.D
Acq_On_ : 5_Aug_2015_ 21:277
Operator_ : UM/TPP
Sample_ : PB84870BLL
Misc_ :
ALS_Vial_ : 11_ Sample_Multiplier: 11

Instrument :
BNA_G
ClientSampleId :
PB84870BL

Quant_Method_ : Z:\HPCHEM1\BNA_G\METHODS\SOM02.2=EPA-BG080515.MM
Quant_Title_ : SVOA_CALIBRATIONN

TIC_Library_ : C:\DATABASE\NIST02.LL
TIC_Integration Parameters: LSCINT.PP

TIC Top Hit name	RT	EstConc	Units	Response	--Internal Standard--		
					#	RT	Resp Conc

No Library Search Compounds Detected
