

Data Path : Z:\SVOASRV\HPCHEM1\BNA G\DATA\BG081219\
 Data File : BG042146.D
 Acq On : 12 Aug 2019 15:09
 Operator : HP/JU
 Sample : K4161-10
 Misc :
 ALS Vial : 11 Sample Multiplier: 1

Instrument :
 BNA_G
 ClientSampleId :
 ETOD9

Quant Time: Aug 13 11:14:32 2019
 Quant Method : Z:\SVOASRV\HPCHEM1\BNA_G\METHODS\SOM-EPA-BG080319MA.M
 Quant Title : SVOA CALIBRATION
 QLast Update : Tue Aug 13 04:44:41 2019
 Response via : Initial Calibration

Internal Standards	R.T.	QIon	Response	Conc	Units	Dev(Min)
1) 1,4-Dichlorobenzene-d4	8.02	152	97557	20.00	ng/ul	0.00
18) Naphthalene-d8	10.85	136	404230	20.00	ng/ul	0.00
35) Acenaphthene-d10	14.68	164	284627	20.00	ng/ul	0.00
61) Phenanthrene-d10	17.44	188	596358	20.00	ng/ul	0.00
77) Chrysene-d12	21.72	240	604873	20.00	ng/ul	0.00
85) Perylene-d12	24.99	264	674993	20.00	ng/ul	0.00

System Monitoring Compounds

3) 1,4-Dioxane-d8	3.41	96	9886	4.43	ng/uL	0.00
5) Phenol-d5	7.18	99	55853	7.30	ng/ul	0.00
7) Bis-(2-Chloroethyl)ether-d	7.34	67	100108	23.38	ng/ul	0.00
9) 2-Chlorophenol-d4	7.55	132	152118	23.24	ng/ul	0.00
13) 4-Methylphenol-d8	8.74	113	99421	15.47	ng/ul	0.00
19) Nitrobenzene-d5	9.19	128	89505	29.41	ng/ul	0.00
22) 2-Nitrophenol-d4	9.92	143	111772	31.64	ng/ul	0.00
26) 2,4-Dichlorophenol-d3	10.47	165	200174	28.07	ng/ul	0.00
29) 4-Chloroaniline-d4	10.99	131	17423	2.20	ng/ul	0.00
43) Dimethylphthalate-d6	14.08	166	651891	29.53	ng/ul	0.00
46) Acenaphthylene-d8	14.38	160	744087	29.51	ng/ul	0.00
51) 4-Nitrophenol-d4	14.89	143	21198	5.72	ng/ul	0.00
57) Fluorene-d10	15.68	176	571734	29.11	ng/ul	0.00
62) 4,6-Dinitro-2-methylphenol	15.80	200	104843	27.40	ng/ul	0.00
70) Anthracene-d10	17.54	188	887216	31.01	ng/ul	0.00
78) Pyrene-d10	19.82	212	1017585	30.15	ng/ul	0.00
89) Benzo(a)pyrene-d12	24.76	264	1114503	31.61	ng/ul	0.00

Target Compounds

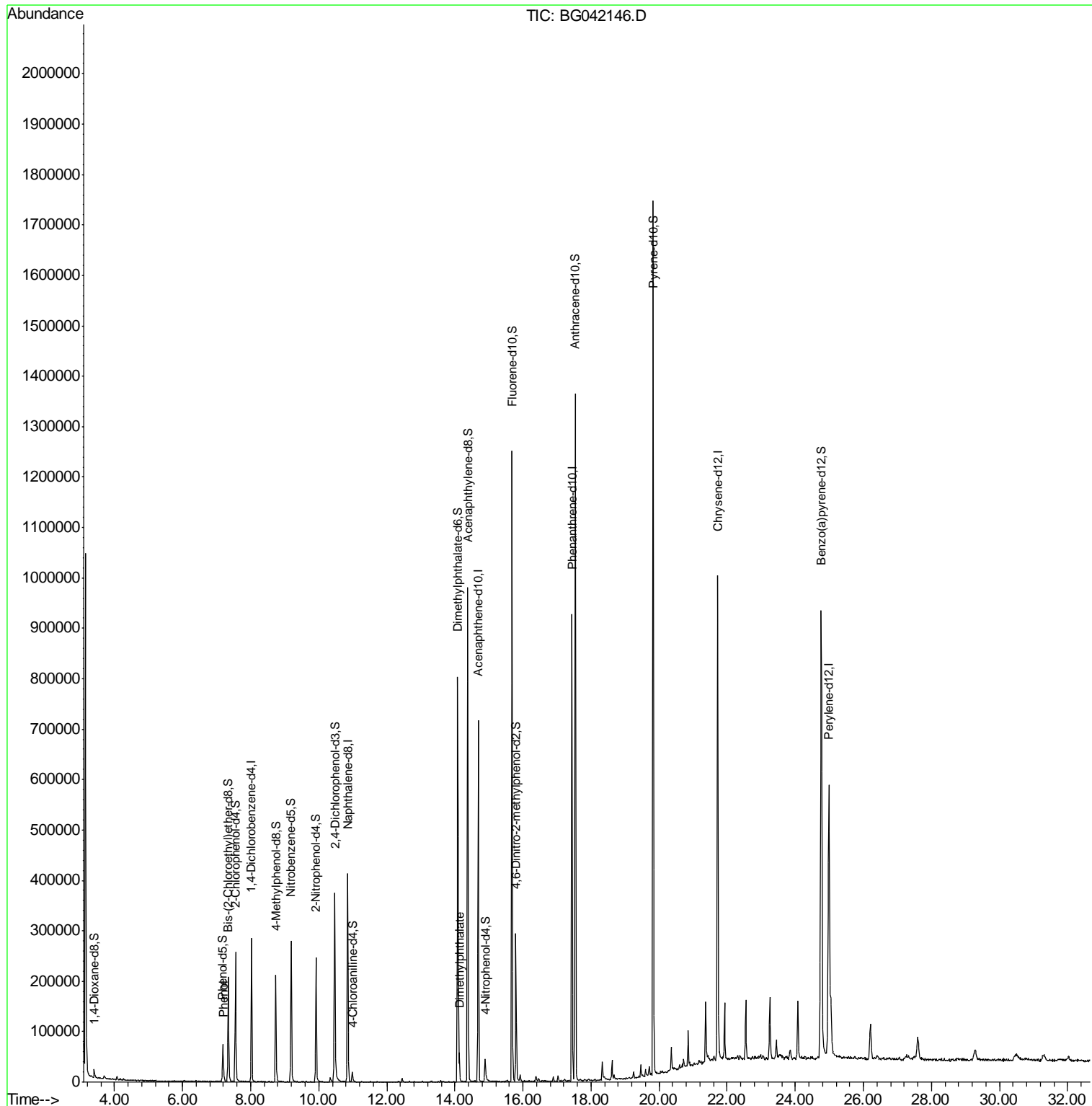
					Ovalue
6) Phenol	7.20	94	8057	1.020	ng/ul 92
44) Dimethylphthalate	14.13	163	40000	1.825	ng/ul 96

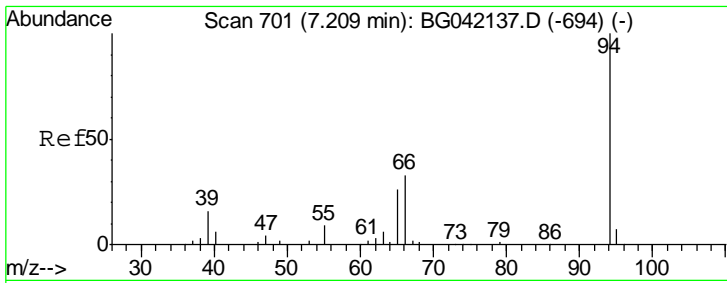
(#) = qualifier out of range (m) = manual integration (+) = signals summed

Data Path : Z:\SVOASRV\HPCHEM1\BNA G\DATA\BG081219\
 Data File : BG042146.D
 Acq On : 12 Aug 2019 15:09
 Operator : HP/JU
 Sample : K4161-10
 Misc :
 ALS Vial : 11 Sample Multiplier: 1

Instrument :
 BNA_G
 ClientSampled :
 ETOD9

Quant Time: Aug 13 11:14:32 2019
 Quant Method : Z:\SVOASRV\HPCHEM1\BNA_G\METHODS\SOM-EPA-BG080319MA.M
 Quant Title : SVOA CALIBRATION
 QLast Update : Tue Aug 13 04:44:41 2019
 Response via : Initial Calibration

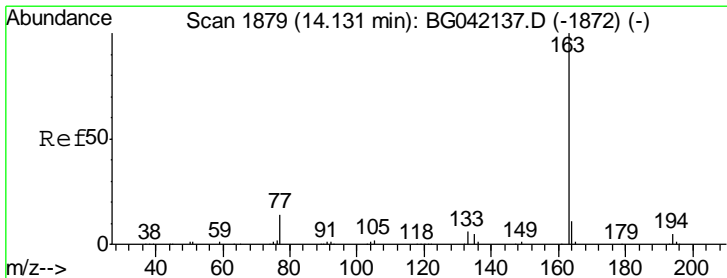
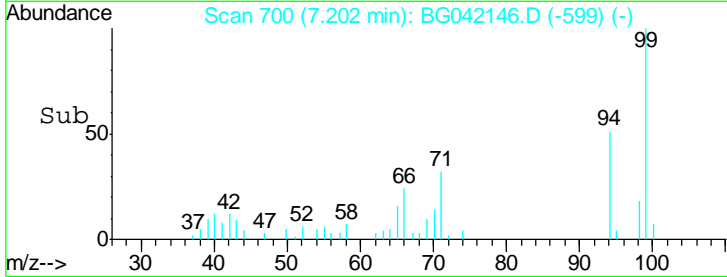
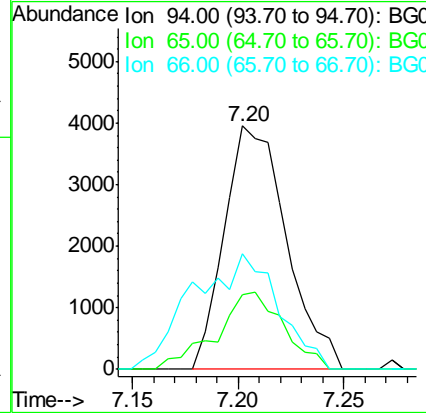
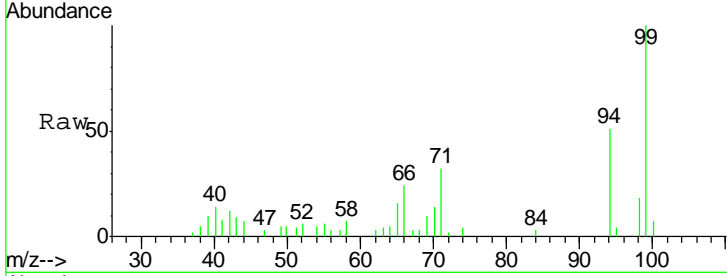




#6
 Phenol
 Concen: 1.020 ng/ul
 RT: 7.20 min Scan# 700
 Delta R.T. -0.01 min
 Lab File: BG042146.D
 Acq: 12 Aug 2019 15:09

Instrument :
 BNA_G
ClientSampled :
 ETOD9

Tgt Ion	Resp	Lower	Upper
94	8057		
65	30.9	25.8	38.6
66	47.5	31.8	47.8



#44
 Dimethylphthalate
 Concen: 1.825 ng/ul
 RT: 14.13 min Scan# 1879
 Delta R.T. -0.00 min
 Lab File: BG042146.D
 Acq: 12 Aug 2019 15:09

Tgt Ion	Resp	Lower	Upper
163	40000		
194	5.9	4.2	6.2
164	11.4	7.8	11.8

