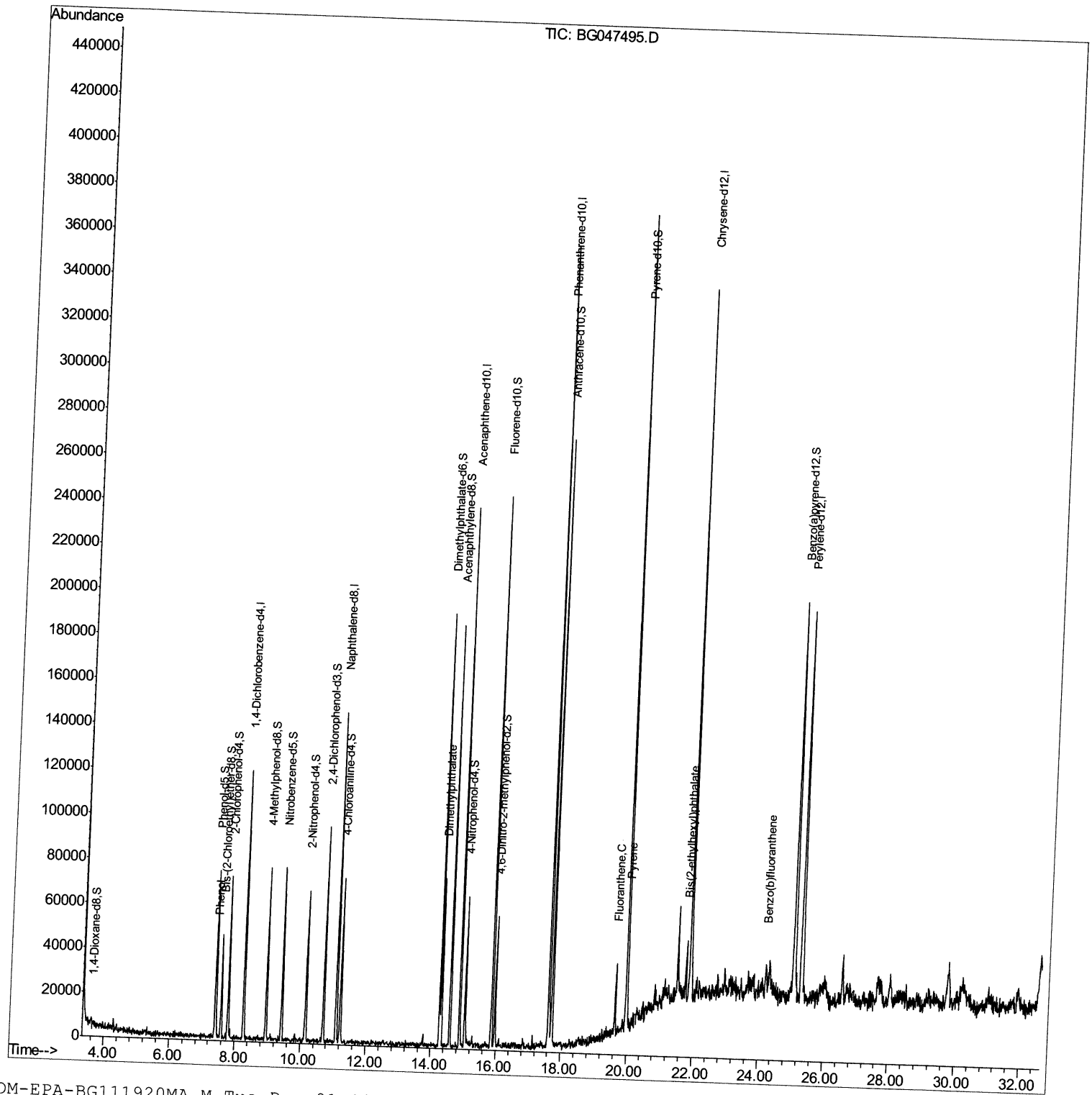


Data Path : Z:\svoasrv\HPCHEM1\BNA G\Data\BG120120\
Data File : BG047495.D
Acq On : 1 Dec 2020 12:12
Operator : CG/JU
Sample : L4793-22
Misc :
ALS Vial : 8 Sample Multiplier: 1

Instrument :
BNA_G
Client Sampled :
C0BG7

Manual Integrations
APPROVED
mohammad
12/2/2020 2:25:51 PM

Quant Time: Dec 01 13:38:05 2020
Quant Method : Z:\SVOASRV\HPCHEM1\BNA_G\METHODS\SOM-EPA-BG111920MA.M
Quant Title : SVOA CALIBRATION
QLast Update : Tue Dec 01 10:06:47 2020
Response via : Initial Calibration



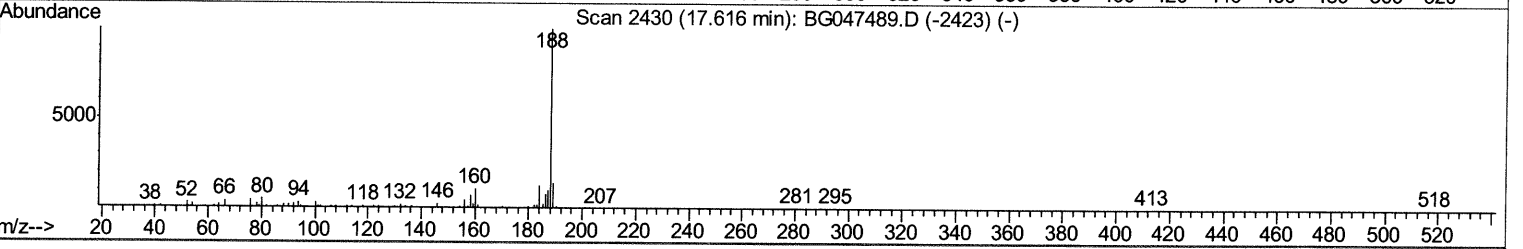
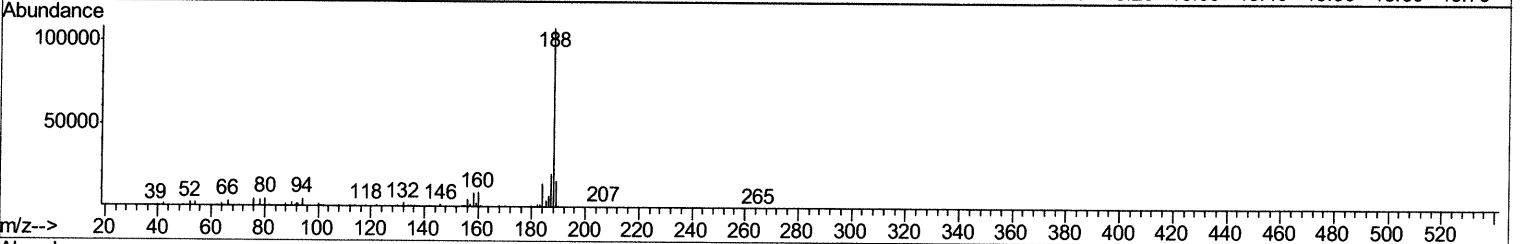
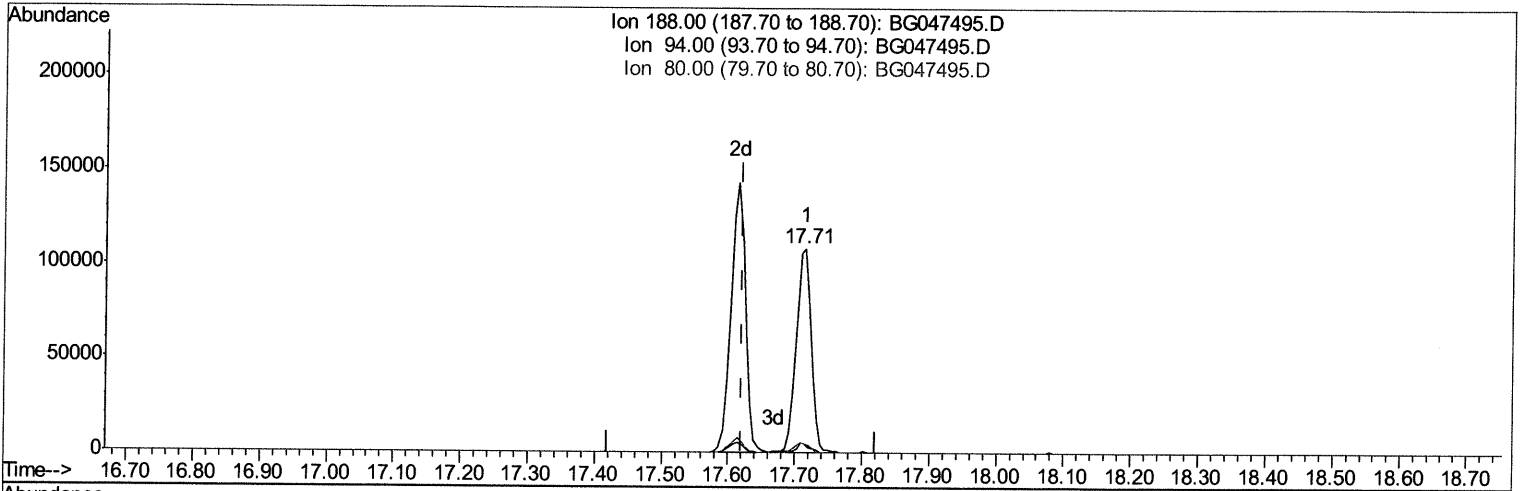
Quantitation Report (Qedit)

Data Path : Z:\svoasrv\HPCHEM1\BNA G\Data\BG120120\
 Data File : BG047495.D
 Acq On : 1 Dec 2020 12:12
 Operator : CG/JU
 Sample : L4793-22
 Misc :
 ALS Vial : 8 Sample Multiplier: 1

Instrument :
 BNA_G
ClientSampled :
 C0BG7

Manual Integrations
APPROVED
 mohammad
 12/2/2020 2:25:51 PM

Quant Time: Dec 01 13:30:47 2020
 Quant Method : Z:\SVOASRV\HPCHEM1\BNA_G\METHODS\SOM-EPA-BG111920MA.M
 Quant Title : SVOA CALIBRATION
 QLast Update : Tue Dec 01 10:06:47 2020
 Response via : Initial Calibration



TIC: BG047495.D

(62) Phenanthrene-d10 (I)
 17.714min (+0.094) 20.00ng/ul
 response 166393

Ion	Exp%	Act%
188.00	100	100
94.00	4.60	4.25
80.00	5.30	4.30
0.00	0.00	0.00

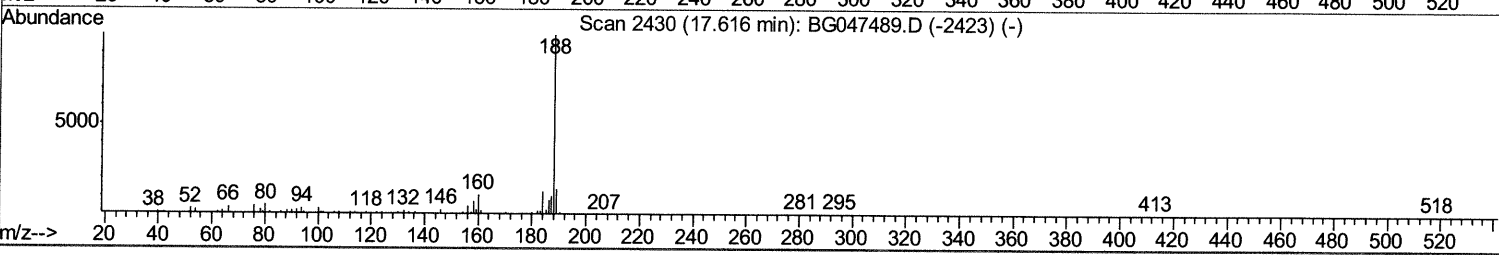
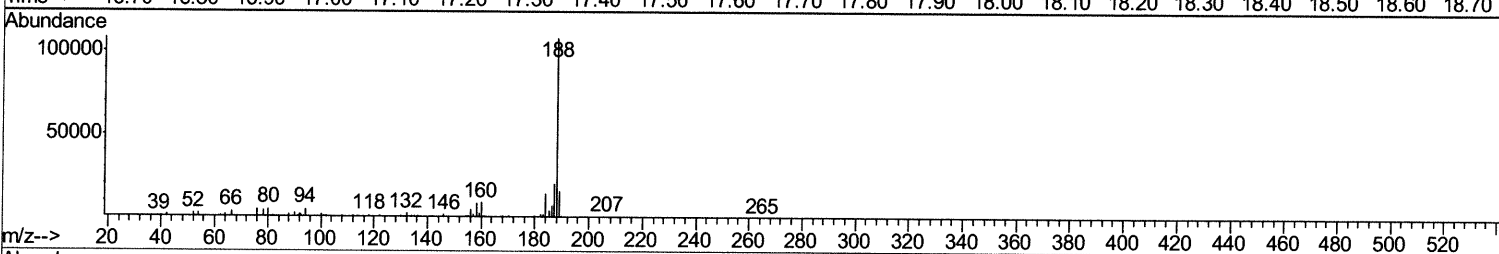
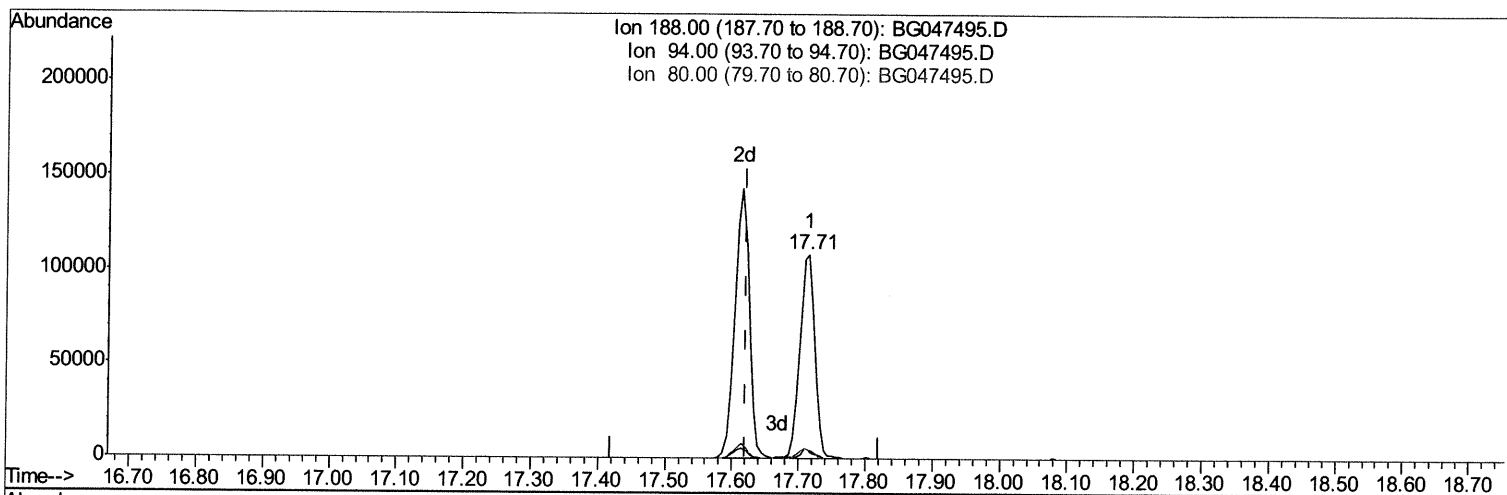
Quantitation Report (Qedit)

Data Path : Z:\svoasrv\HPCHEM1\BNA G\Data\BG120120\
 Data File : BG047495.D
 Acq On : 1 Dec 2020 12:12
 Operator : CG/JU
 Sample : L4793-22
 Misc :
 ALS Vial : 8 Sample Multiplier: 1

Instrument :
 BNA_G
ClientSampled :
 C0BG7

Manual Integrations
APPROVED
 mohammad
 12/2/2020 2:25:51 PM

Quant Time: Dec 01 13:30:47 2020
 Quant Method : Z:\SVOASRV\HPCHEM1\BNA_G\METHODS\SOM-EPA-BG111920MA.M
 Quant Title : SVOA CALIBRATION
 QLast Update : Tue Dec 01 10:06:47 2020
 Response via : Initial Calibration



TIC: BG047495.D

(62) Phenanthrene-d10 (I)

17.714min (+0.094) 20.00ng/ul

response 166393

Ion	Exp%	Act%
188.00	100	100
94.00	4.60	4.25
80.00	5.30	4.30
0.00	0.00	0.00

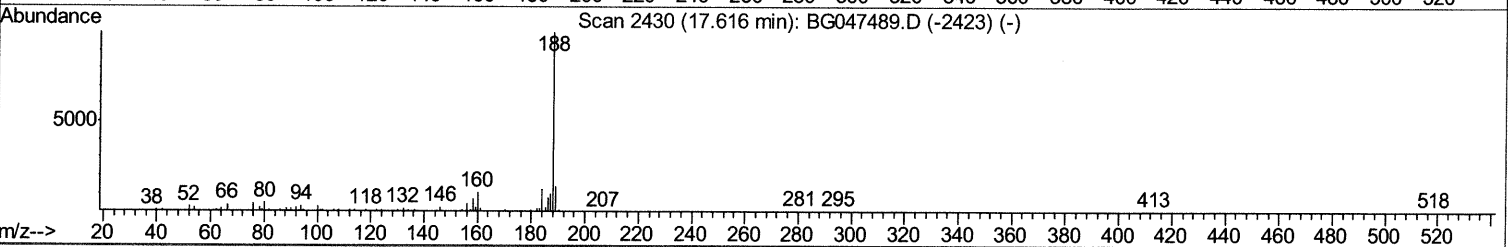
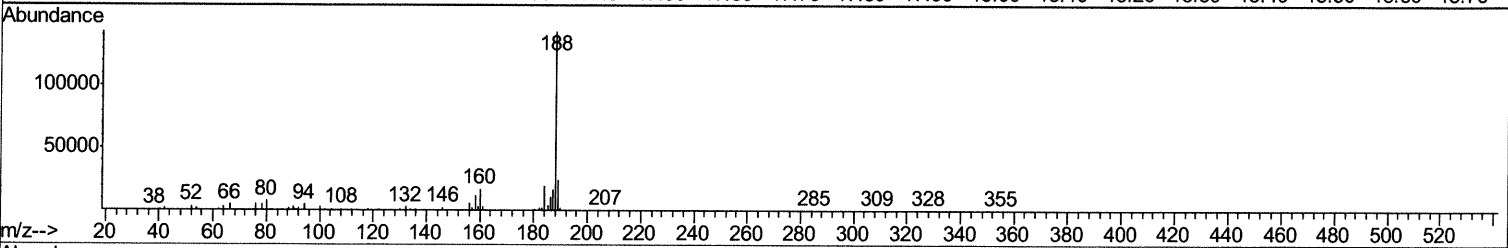
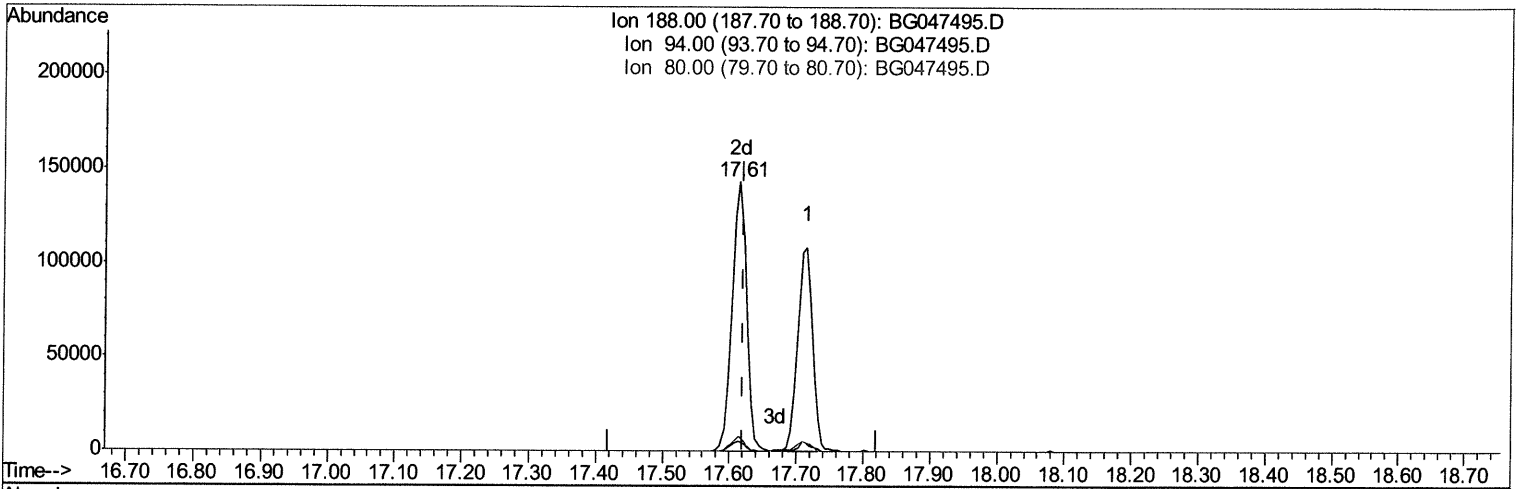
Quantitation Report (Qedit)

Data Path : Z:\svoasrv\HPCHEM1\BNA G\Data\BG120120\
 Data File : BG047495.D
 Acq On : 1 Dec 2020 12:12
 Operator : CG/JU
 Sample : L4793-22
 Misc :
 ALS Vial : 8 Sample Multiplier: 1

Instrument :
 BNA_G
 ClientSampleId :
 C0BG7

Manual Integrations
APPROVED
 mohammad
 12/2/2020 2:25:51 PM

Quant Time: Dec 01 13:30:47 2020
 Quant Method : Z:\SVOASRV\HPCHEM1\BNA_G\METHODS\SOM-EPA-BG111920MA.M
 Quant Title : SVOA CALIBRATION
 QLast Update : Tue Dec 01 10:06:47 2020
 Response via : Initial Calibration



TIC: BG047495.D

(62) Phenanthrene-d10 (I)

17.615min (-0.006) 20.00ng/ul m 12/04/20 JU

response 214043

Ion	Exp%	Act%
188.00	100	100
94.00	4.60	3.49#
80.00	5.30	5.33
0.00	0.00	0.00

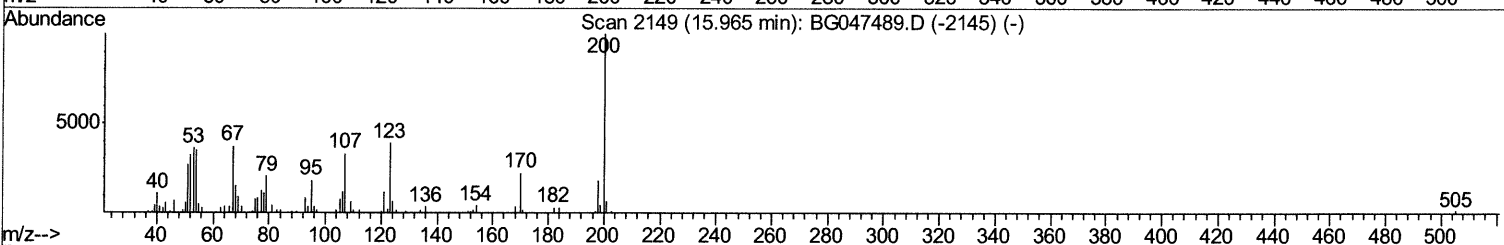
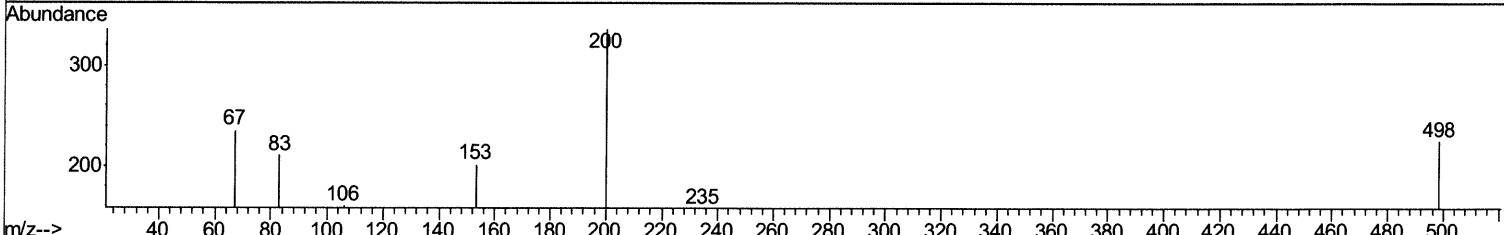
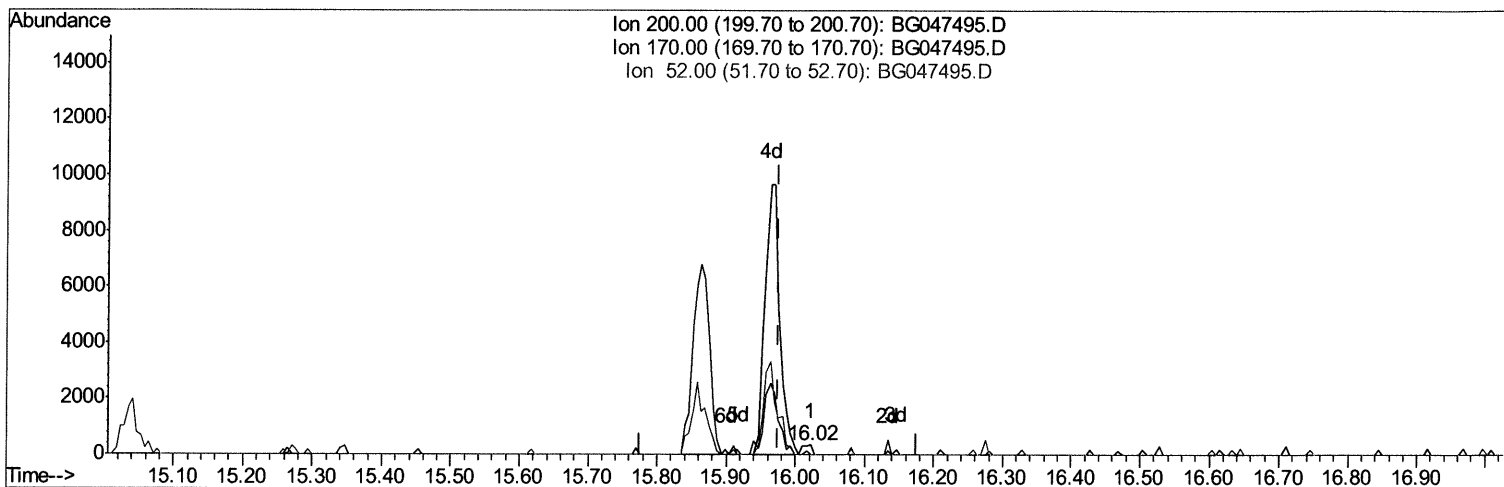
Quantitation Report (Qedit)

Data Path : Z:\svoasrv\HPCHEM1\BNA G\Data\BG120120\
 Data File : BG047495.D
 Acq On : 1 Dec 2020 12:12
 Operator : CG/JU
 Sample : L4793-22
 Misc :
 ALS Vial : 8 Sample Multiplier: 1

Instrument :
 BNA_G
ClientSampleId :
 C0BG7

Manual Integrations
APPROVED
 mohammad
 12/2/2020 2:25:51 PM

Quant Time: Dec 01 13:33:33 2020
 Quant Method : Z:\SVOASRV\HPCHEM1\BNA_G\METHODS\SOM-EPA-BG111920MA.M
 Quant Title : SVOA CALIBRATION
 QLast Update : Tue Dec 01 10:06:47 2020
 Response via : Initial Calibration



TIC: BG047495.D

(63) 4,6-Dinitro-2-methylphenol-d2 (S)

16.022min (+0.047) 0.27ng/ul

response 332

Ion	Exp%	Act%
200.00	100	100
170.00	18.20	0.00#
52.00	39.70	0.00#
0.00	0.00	0.00

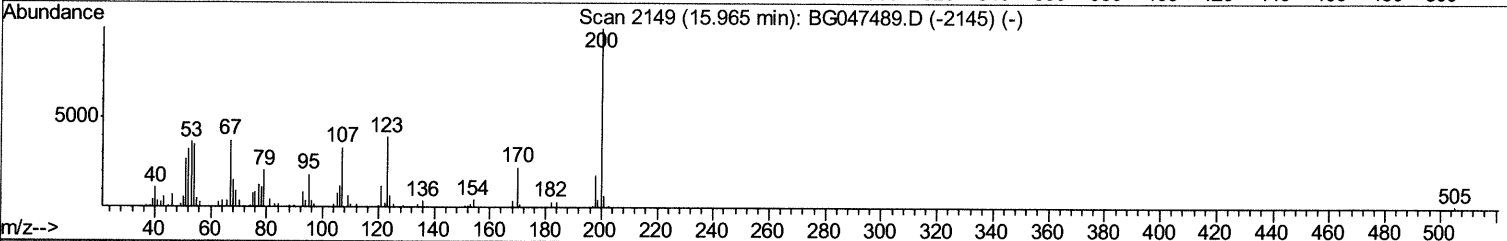
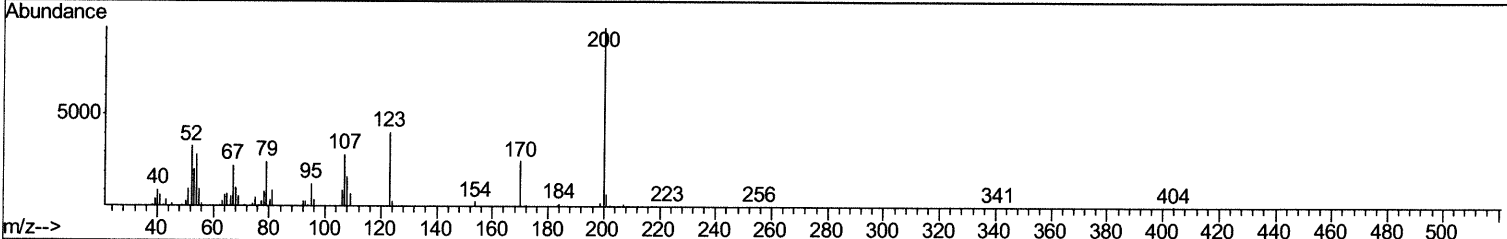
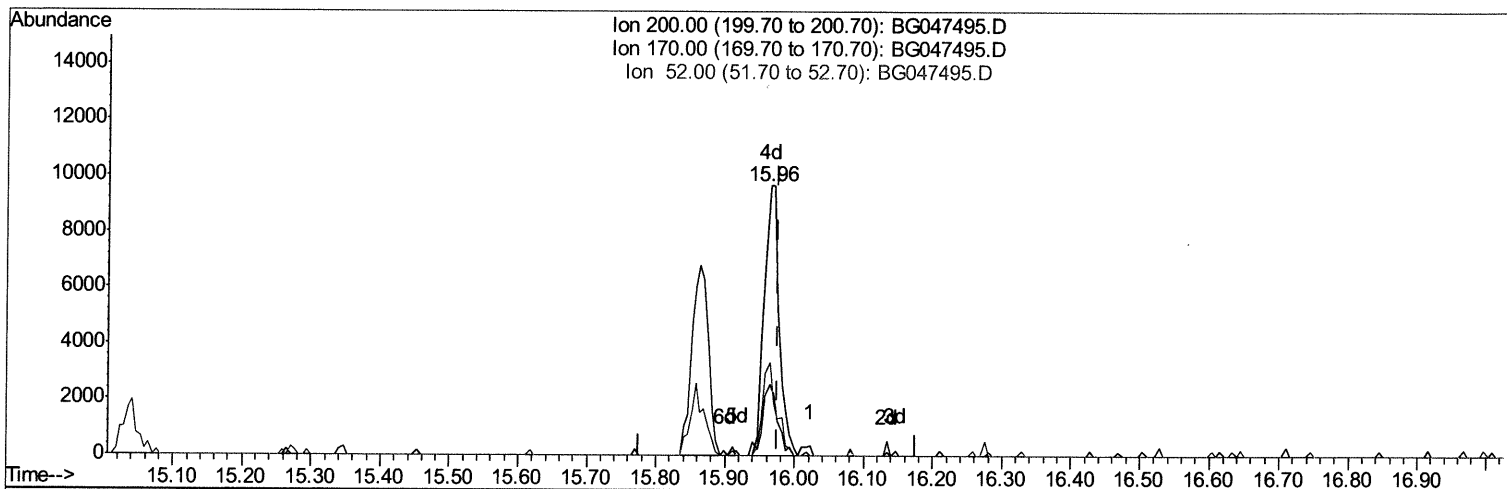
Quantitation Report (Qedit)

Data Path : Z:\svoasrv\HPCHEM1\BNA G\Data\BG120120\
 Data File : BG047495.D
 Acq On : 1 Dec 2020 12:12
 Operator : CG/JU
 Sample : L4793-22
 Misc :
 ALS Vial : 8 Sample Multiplier: 1

Instrument :
 BNA_G
ClientSampleId :
 C0BG7

Manual Integrations
APPROVED
 mohammad
 12/2/2020 2:25:51 PM

Quant Time: Dec 01 13:33:33 2020
 Quant Method : Z:\SVOASRV\HPCHEM1\BNA_G\METHODS\SOM-EPA-BG111920MA.M
 Quant Title : SVOA CALIBRATION
 QLast Update : Tue Dec 01 10:06:47 2020
 Response via : Initial Calibration



TIC: BG047495.D

(63) 4,6-Dinitro-2-methylphenol-d2 (S)

15.964min (-0.012) 11.94ng/ul m *12/04/2024*

response 14552

Ion	Exp%	Act%
200.00	100	100
170.00	18.20	26.44#
52.00	39.70	34.41
0.00	0.00	0.00

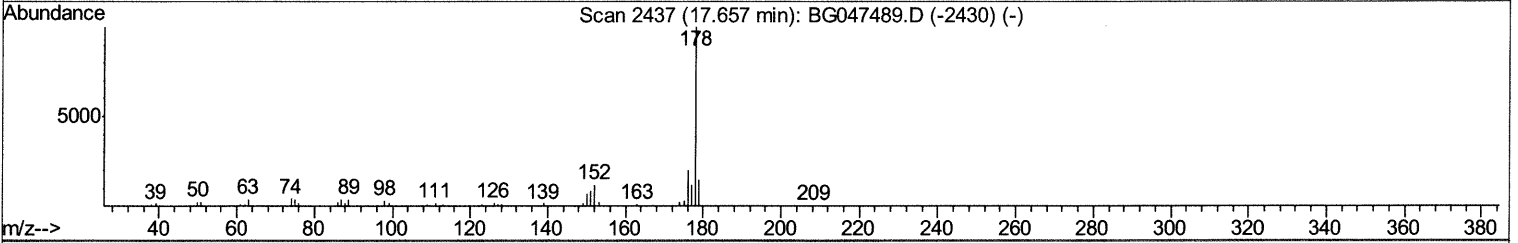
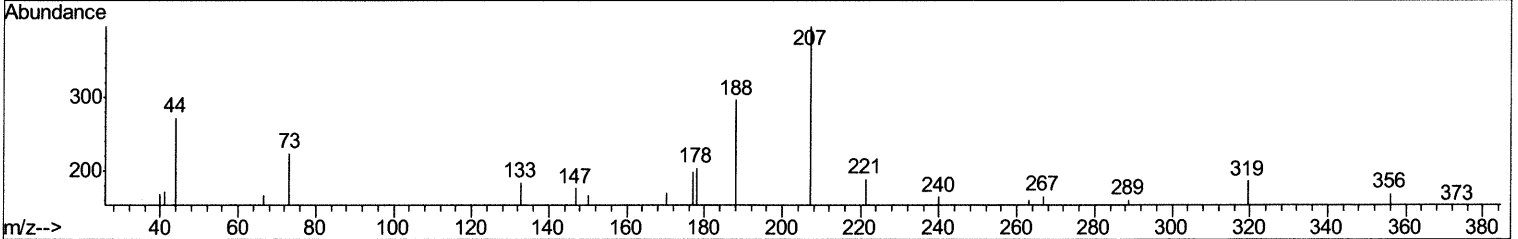
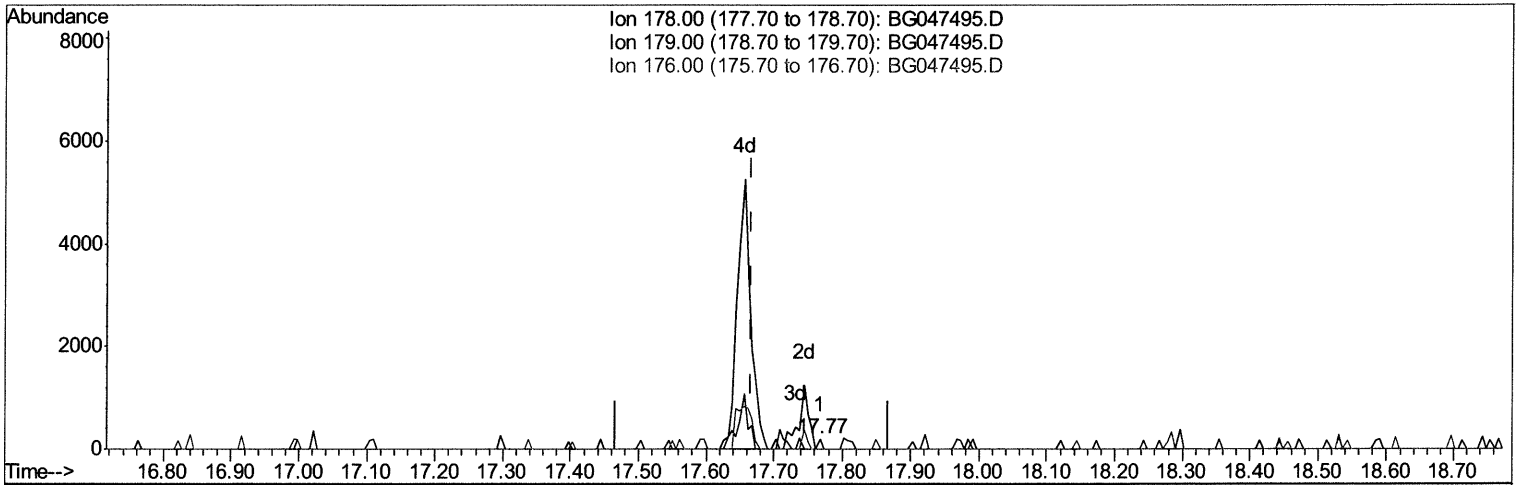
Quantitation Report (Qedit)

Data Path : Z:\svoasrv\HPCHEM1\BNA G\Data\BG120120\
 Data File : BG047495.D
 Acq On : 1 Dec 2020 12:12
 Operator : CG/JU
 Sample : L4793-22
 Misc :
 ALS Vial : 8 Sample Multiplier: 1

Instrument :
 BNA_G
 ClientSampleId :
 C0BG7

Manual Integrations
APPROVED
 mohammad
 12/2/2020 2:25:51 PM

Quant Time: Dec 01 13:33:33 2020
 Quant Method : Z:\SVOASRV\HPCHEM1\BNA_G\METHODS\SOM-EPA-BG111920MA.M
 Quant Title : SVOA CALIBRATION
 QLast Update : Tue Dec 01 10:06:47 2020
 Response via : Initial Calibration



TIC: BG047495.D

(70) Phenanthrene

17.767min (+0.100) 0.01ng/ul

response 72

Ion	Exp%	Act%
178.00	100	100
179.00	14.70	0.00#
176.00	17.40	0.00#
0.00	0.00	0.00

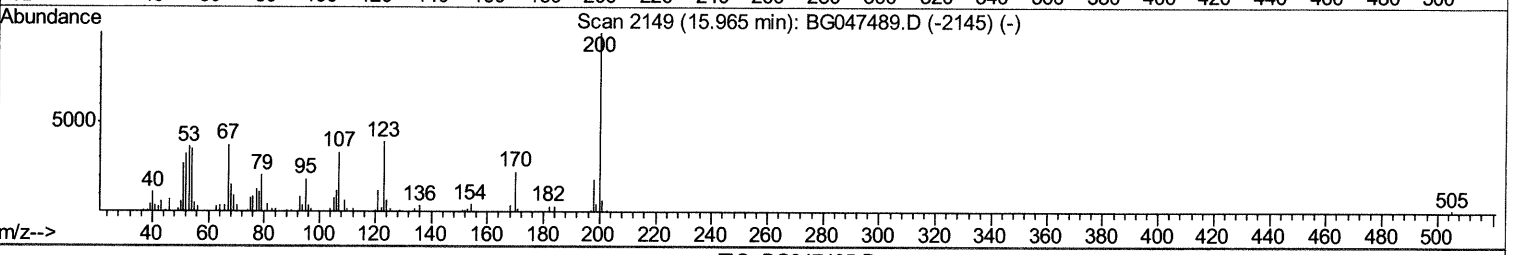
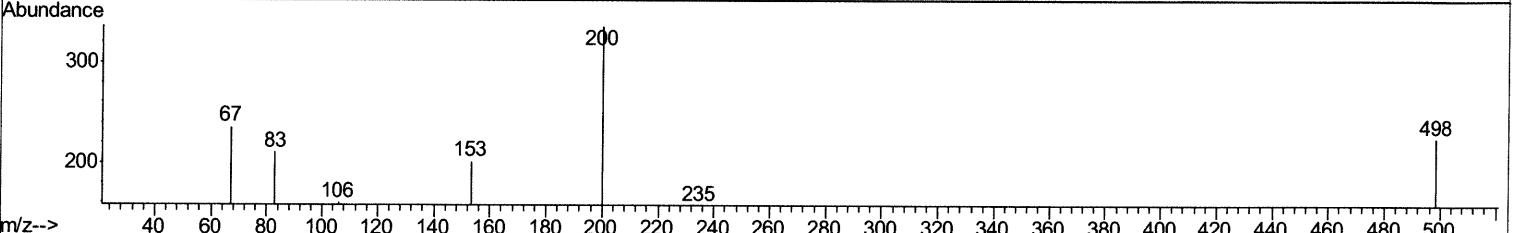
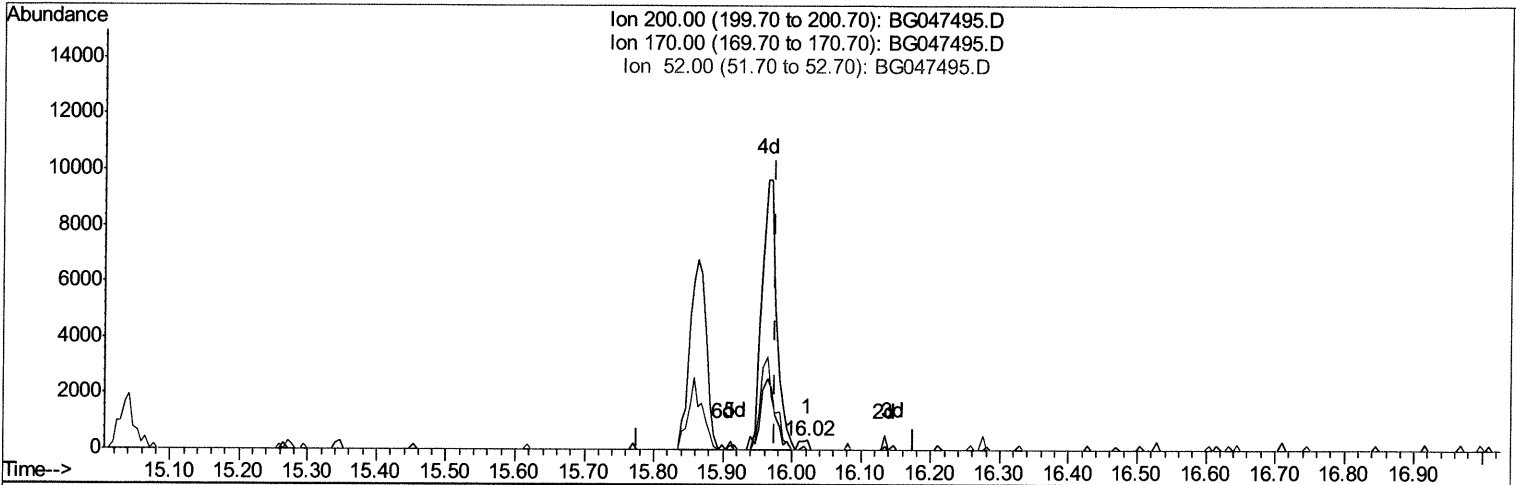
Quantitation Report (Qedit)

Data Path : Z:\svoasrv\HPCHEM1\BNA G\Data\BG120120\
 Data File : BG047495.D
 Acq On : 1 Dec 2020 12:12
 Operator : CG/JU
 Sample : L4793-22
 Misc :
 ALS Vial : 8 Sample Multiplier: 1

Instrument :
 BNA_G
ClientSampled :
 C0BG7

Manual Integrations
APPROVED
 mohammad
 12/2/2020 2:25:51 PM

Quant Time: Dec 01 13:33:33 2020
 Quant Method : Z:\SVOASRV\HPCHEM1\BNA_G\METHODS\SOM-EPA-BG111920MA.M
 Quant Title : SVOA CALIBRATION
 QLast Update : Tue Dec 01 10:06:47 2020
 Response via : Initial Calibration



TIC: BG047495.D

(63) 4,6-Dinitro-2-methylphenol-d2 (S)

16.022min (+0.047) 0.27ng/ul

response 332

Ion	Exp%	Act%
200.00	100	100
170.00	18.20	0.00#
52.00	39.70	0.00#
0.00	0.00	0.00

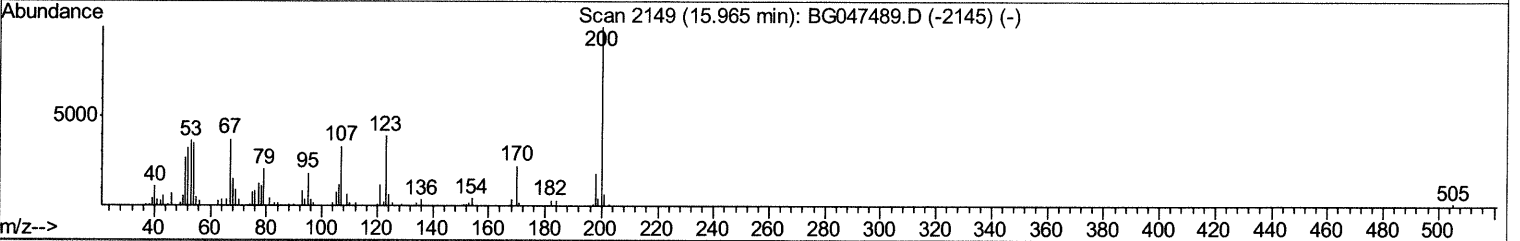
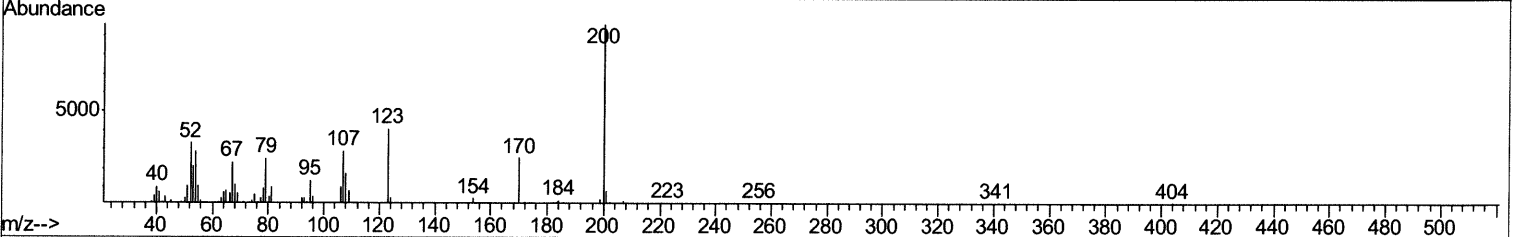
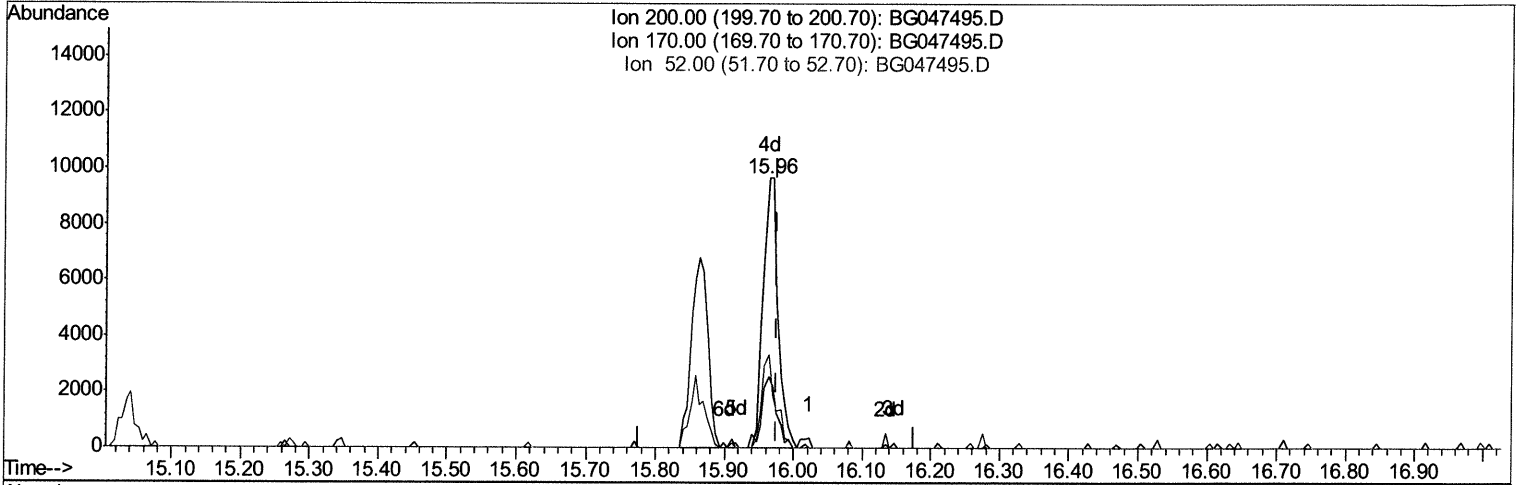
Quantitation Report (Qedit)

Data Path : Z:\svoasrv\HPCHEM1\BNA G\Data\BG120120\
 Data File : BG047495.D
 Acq On : 1 Dec 2020 12:12
 Operator : CG/JU
 Sample : L4793-22
 Misc :
 ALS Vial : 8 Sample Multiplier: 1

Instrument :
 BNA_G
ClientSampled :
 C0BG7

Manual Integrations
APPROVED
 mohammad
 12/2/2020 2:25:51 PM

Quant Time: Dec 01 13:33:33 2020
 Quant Method : Z:\SVOASRV\HPCHEM1\BNA_G\METHODS\SOM-EPA-BG111920MA.M
 Quant Title : SVOA CALIBRATION
 QLast Update : Tue Dec 01 10:06:47 2020
 Response via : Initial Calibration



TIC: BG047495.D

(63) 4,6-Dinitro-2-methylphenol-d2 (S)

15.964min (-0.012) 11.94ng/ul m 12/04/2020 JU

response 14552

Ion	Exp%	Act%
200.00	100	100
170.00	18.20	26.44#
52.00	39.70	34.41
0.00	0.00	0.00

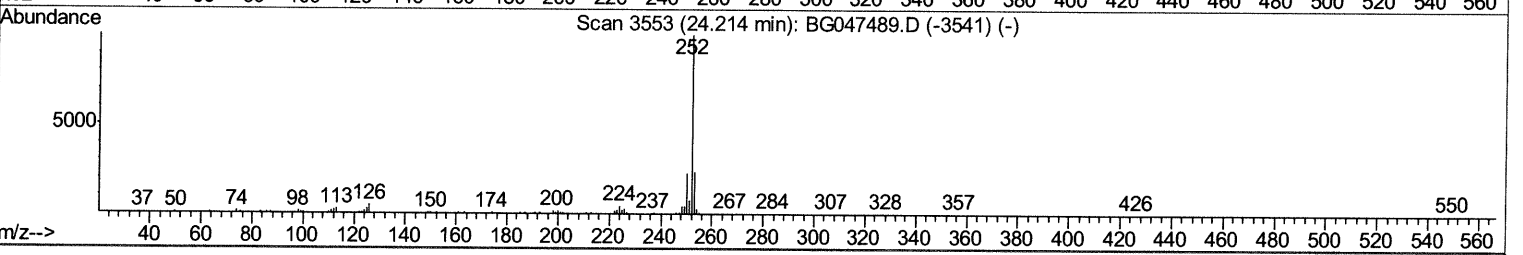
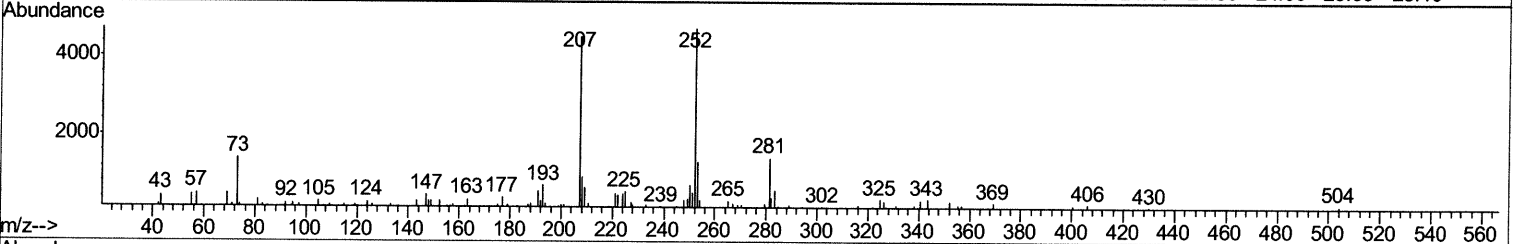
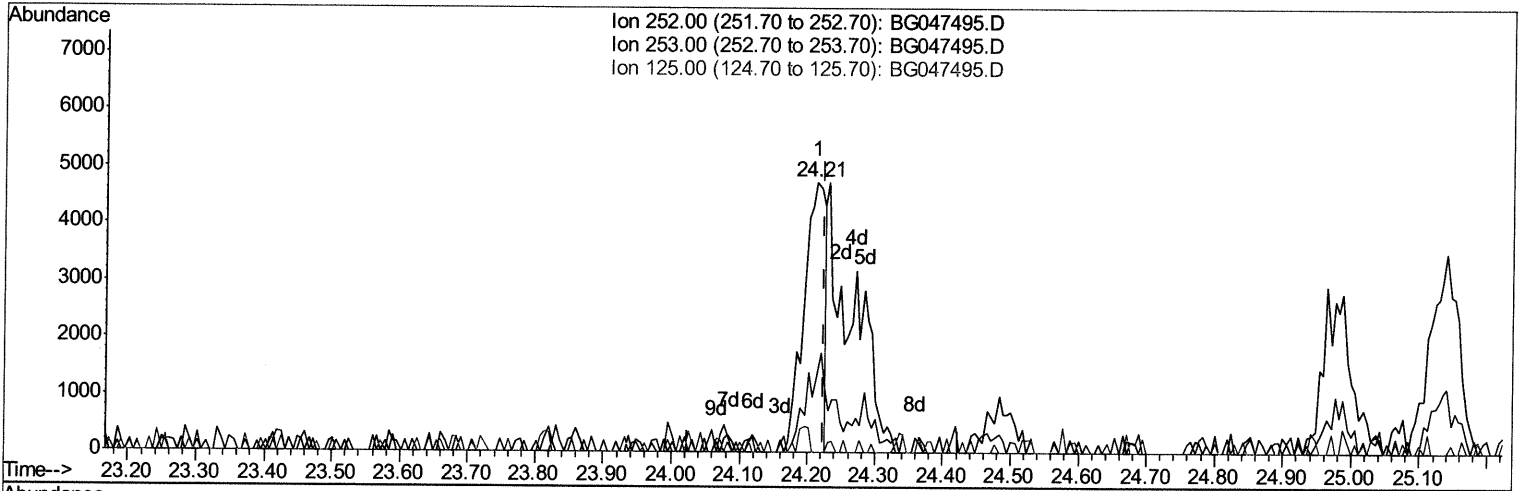
Quantitation Report (Qedit)

Data Path : Z:\svoasrv\HPCHEM1\BNA G\Data\BG120120\
 Data File : BG047495.D
 Acq On : 1 Dec 2020 12:12
 Operator : CG/JU
 Sample : L4793-22
 Misc :
 ALS Vial : 8 Sample Multiplier: 1

Instrument :
 BNA_G
ClientSampled :
 C0BG7

Manual Integrations
APPROVED
 mohammad
 12/2/2020 2:25:51 PM

Quant Time: Dec 01 13:33:33 2020
 Quant Method : Z:\SVOASRV\HPCHEM1\BNA_G\METHODS\SOM-EPA-BG111920MA.M
 Quant Title : SVOA CALIBRATION
 QLast Update : Tue Dec 01 10:06:47 2020
 Response via : Initial Calibration



TIC: BG047495.D

(88) Benzo(b)fluoranthene
 24.213min (-0.012) 0.69ng/ul
 response 10425

Ion	Exp%	Act%
252.00	100	100
253.00	20.80	27.45#
125.00	3.40	0.00#
0.00	0.00	0.00

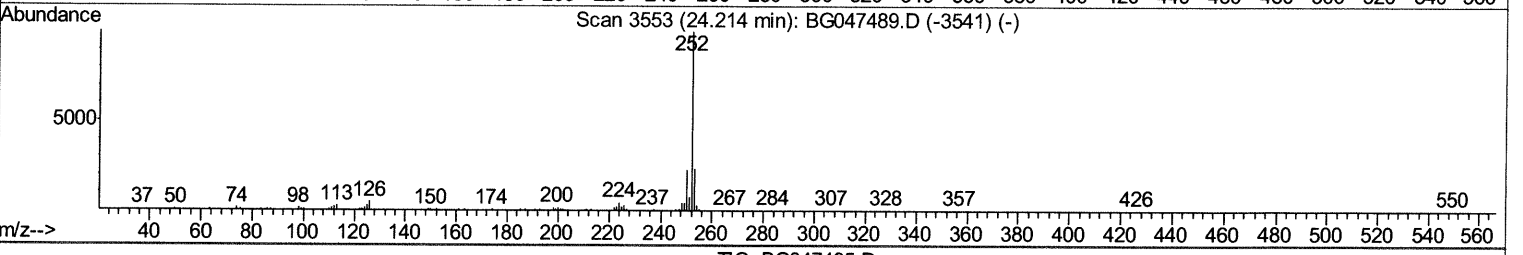
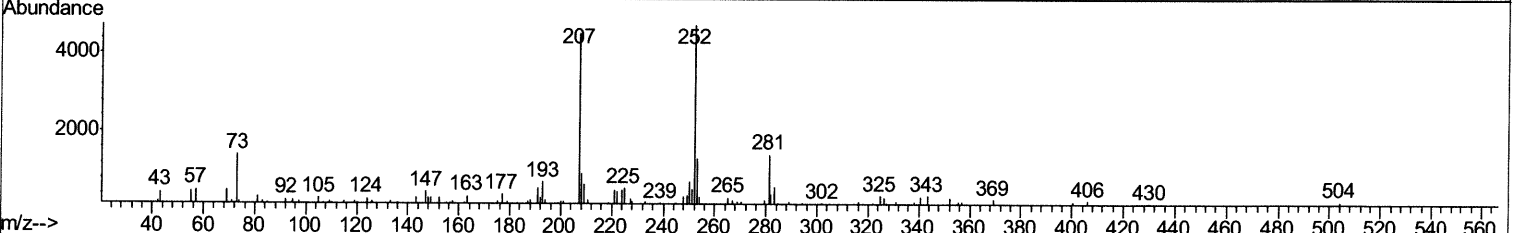
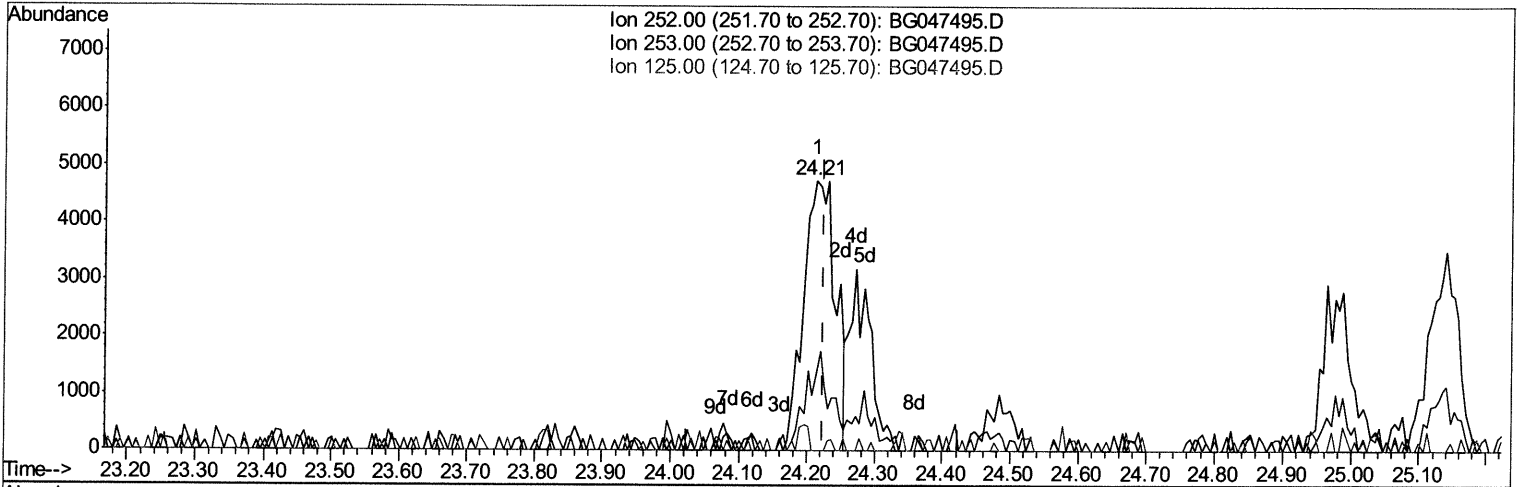
Quantitation Report (Qedit)

Data Path : Z:\svoasrv\HPCHEM1\BNA G\Data\BG120120\
 Data File : BG047495.D
 Acq On : 1 Dec 2020 12:12
 Operator : CG/JU
 Sample : L4793-22
 Misc :
 ALS Vial : 8 Sample Multiplier: 1

Instrument :
 BNA_G
Client Sampled :
 C0BG7

Manual Integrations
APPROVED
 mohammad
 12/2/2020 2:25:51 PM

Quant Time: Dec 01 13:36:34 2020
 Quant Method : Z:\SVOASRV\HPCHEM1\BNA_G\METHODS\SOM-EPA-BG111920MA.M
 Quant Title : SVOA CALIBRATION
 QLast Update : Tue Dec 01 10:06:47 2020
 Response via : Initial Calibration



TIC: BG047495.D

(88) Benzo(b)fluoranthene

24.213min (-0.012) 1.04ng/ul m *12/04/20 JU*

response 15575

Ion	Exp%	Act%
252.00	100	100
253.00	20.80	27.45#
125.00	3.40	0.00#
0.00	0.00	0.00

Data Path : Z:\svoasrv\HPCHEM1\BNA G\Data\BG120120\
 Data File : BG047495.D
 Acq On : 1 Dec 2020 12:12
 Operator : CG/JU
 Sample : L4793-22
 Misc :
 ALS Vial : 8 Sample Multiplier: 1

Instrument :
 BNA_G
 Client Sampled :
 C0BG7

Manual Integrations
 APPROVED

mohammad
 12/2/2020 2:25:51 PM

Quant Time: Dec 01 13:38:05 2020
 Quant Method : Z:\SVOASRV\HPCHEM1\BNA_G\METHODS\SOM-EPA-BG111920MA.M
 Quant Title : SVOA CALIBRATION
 QLast Update : Tue Dec 01 10:06:47 2020
 Response via : Initial Calibration

Internal Standards	R.T.	QIon	Response	Conc	Units	Dev(Min)
1) 1,4-Dichlorobenzene-d4	8.27	152	29032	20.00	ng/ul	-0.01
18) Naphthalene-d8	11.09	136	113128	20.00	ng/ul	-0.01
36) Acenaphthene-d10	14.88	164	91116	20.00	ng/ul	-0.01
62) Phenanthrene-d10	17.61	188	214043m>	20.00	ng/ul>	0.00
78) Chrysene-d12	21.90	240	203759	20.00	ng/ul	0.00
86) Perylene-d12	25.30	264	212889	20.00	ng/ul	-0.01
System Monitoring Compounds						
3) 1,4-Dioxane-d8	3.61	96	1592	1.99	ng/uL	0.00
5) Phenol-d5	7.40	99	33510	11.51	ng/ul	-0.01
7) Bis-(2-Chloroethyl)ether-d	7.58	67	19985	12.03	ng/ul	0.00
9) 2-Chlorophenol-d4	7.79	132	25383	13.00	ng/ul	-0.01
13) 4-Methylphenol-d8	8.95	113	23078	10.31	ng/ul	-0.01
19) Nitrobenzene-d5	9.43	128	14760	15.80	ng/ul	-0.01
22) 2-Nitrophenol-d4	10.16	143	16044	15.74	ng/ul	-0.01
26) 2,4-Dichlorophenol-d3	10.70	165	30873	13.22	ng/ul	-0.01
29) 4-Chloroaniline-d4	11.22	131	33365	14.13	ng/ul	-0.01
44) Dimethylphthalate-d6	14.27	166	109367	13.98	ng/ul	-0.01
47) Acenaphthylene-d8	14.58	160	133564	14.78	ng/ul	0.00
52) 4-Nitrophenol-d4	15.04	143	12276	10.29	ng/ul	-0.01
58) Fluorene-d10	15.86	176	104529	14.59	ng/ul	0.00
63) 4,6-Dinitro-2-methylphenol	15.96	200	14552m>	11.94	ng/ul>	-0.01
71) Anthracene-d10	17.71	188	166248	15.66	ng/ul	0.00
79) Pyrene-d10	19.98	212	196928	16.61	ng/ul	0.00
90) Benzo(a)pyrene-d12	25.06	264	203893	16.64	ng/ul	-0.01
Target Compounds						
6) Phenol	7.42	94	5914	2.120	ng/ul	Ovalue 93
45) Dimethylphthalate	14.31	163	44936	5.632	ng/ul	97
77) Fluoranthene	19.65	202	21304	1.459	ng/ul	98
80) Pvrene	20.01	202	16663	1.154	ng/ul#	96
84) Bis(2-ethylhexyl)phthalate	21.76	149	10300	1.458	ng/ul#	80
88) Benzo(b)fluoranthene	24.21	252	15575m>	1.036	ng/ul>	12/04/20 JU

(#) = qualifier out of range (m) = manual integration (+) = signals summed