

Data Path : Z:\SVOASRV\HPCHEM1\BNA G\DATA\BG010320\
 Data File : BG043882.D
 Acq On : 3 Jan 2020 10:54
 Operator : JU
 Sample : PB125860BL
 Misc :
 ALS Vial : 3 Sample Multiplier: 1

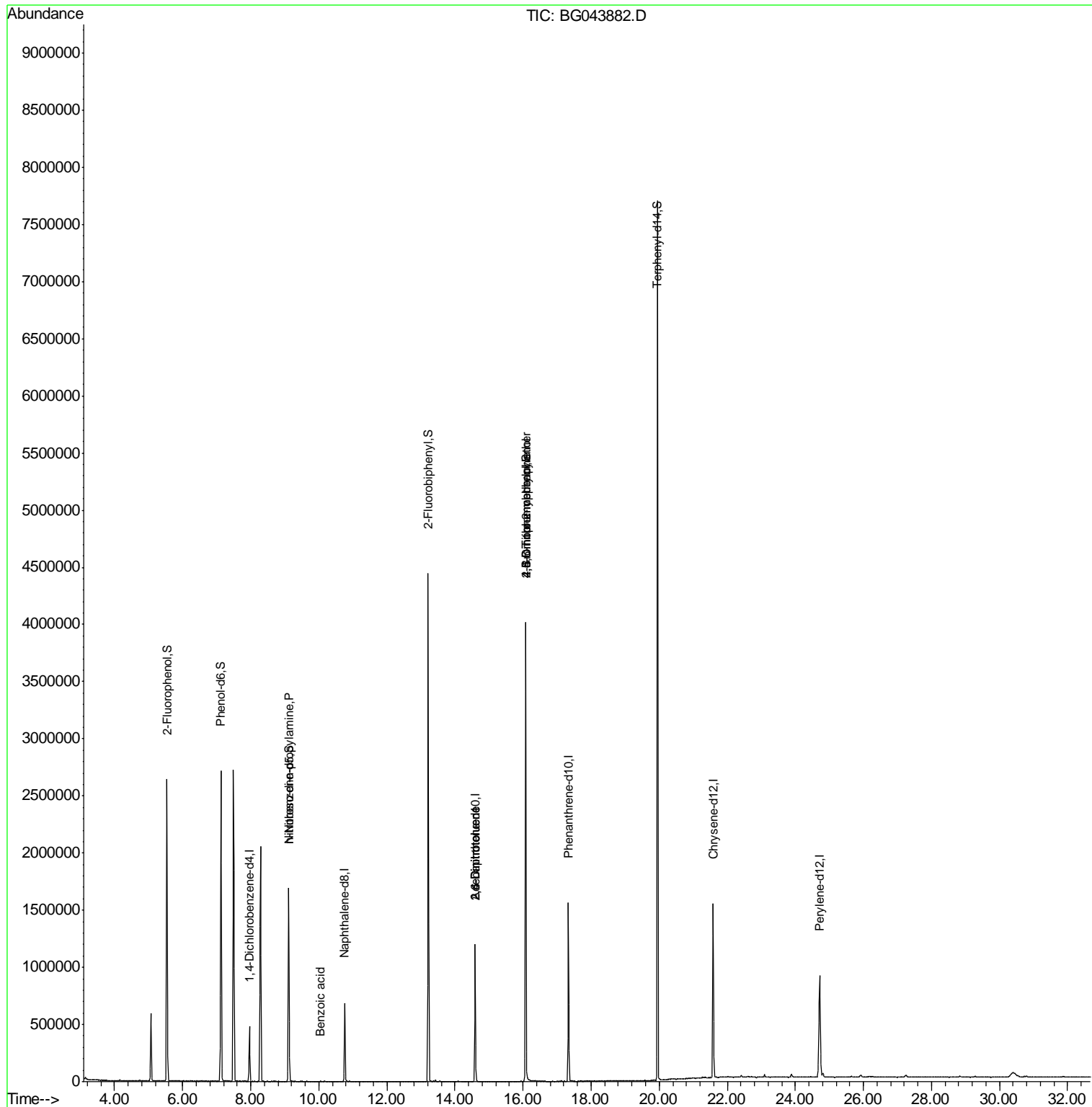
Quant Time: Jan 03 12:49:54 2020
 Quant Method : Z:\SVOASRV\HPCHEM1\BNA G\METHODS\8270-BG123019.M
 Quant Title : ASP BNA STANDARDS FOR 5 POINT CALIBRATION
 QLast Update : Tue Dec 31 13:32:23 2019
 Response via : Initial Calibration

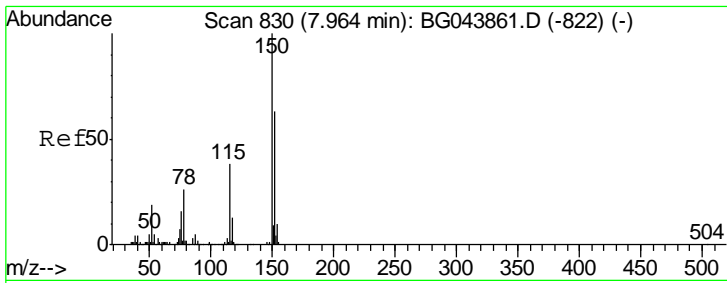
Internal Standards	R.T.	QIon	Response	Conc	Units	Dev(Min)
1) 1,4-Dichlorobenzene-d4	7.96	152	140027	20.00	ng	0.00
21) Naphthalene-d8	10.76	136	608984	20.00	ng	0.00
39) Acenaphthene-d10	14.59	164	413672	20.00	ng	0.00
64) Phenanthrene-d10	17.34	188	945775	20.00	ng	0.00
76) Chrysene-d12	21.58	240	830000	20.00	ng	0.00
87) Perylene-d12	24.72	264	919674	20.00	ng	0.00
System Monitoring Compounds						
5) 2-Fluorophenol	5.54	112	1191539	156.24	ng	0.00
7) Phenol-d6	7.12	99	1635992	153.47	ng	0.00
23) Nitrobenzene-d5	9.12	82	1026406	90.16	ng	0.00
42) 2,4,6-Tribromophenol	16.08	330	677918	156.60	ng	0.00
45) 2-Fluorobiphenyl	13.22	172	2169527	95.02	ng	0.00
79) Terphenyl-d14	19.95	244	3063321	90.50	ng	0.00
Target Compounds						
19) n-Nitroso-di-n-propylamine	9.12	70	139584	17.583	ng	# 78
32) Benzoic acid	10.05	122	94	6.275	ng	# 1
51) 2,6-Dinitrotoluene	14.59	165	53538	8.064	ng	# 27
57) 2,4-Dinitrotoluene	14.59	165	53538	5.927	ng	# 27
65) 4,6-Dinitro-2-methylphenol	16.07	198	2417	4.840	ng	# 1
67) 4-Bromophenyl-phenylether	16.08	248	50712	4.767	ng	# 1

(#) = qualifier out of range (m) = manual integration (+) = signals summed

Data Path : Z:\SVOASRV\HPCHEM1\BNA G\DATA\BG010320\
 Data File : BG043882.D
 Acq On : 3 Jan 2020 10:54
 Operator : JU
 Sample : PB125860BL
 Misc :
 ALS Vial : 3 Sample Multiplier: 1

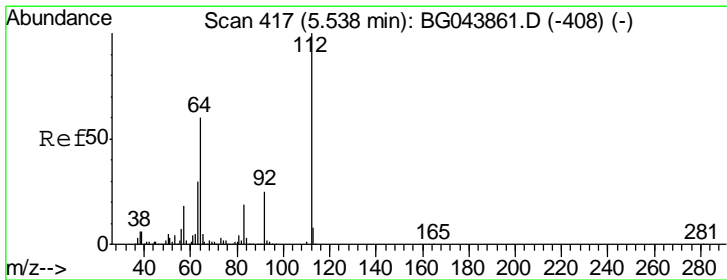
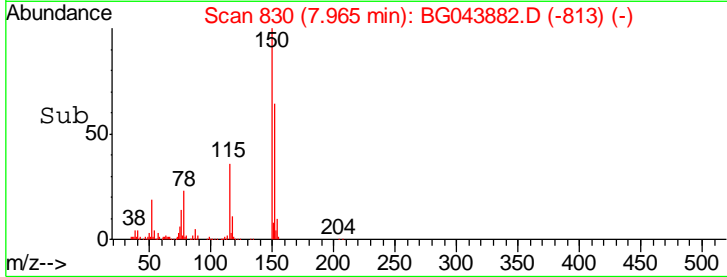
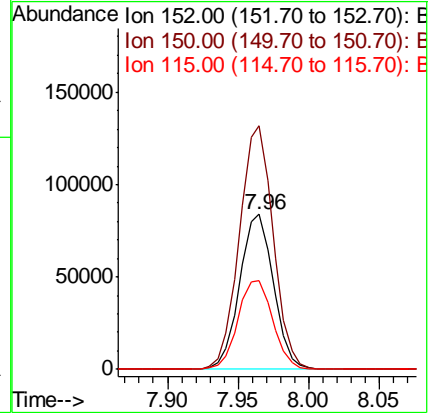
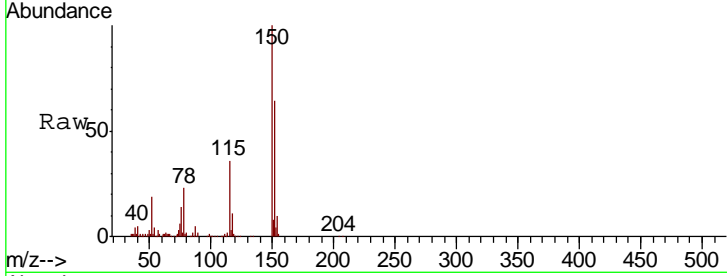
Quant Time: Jan 03 12:49:54 2020
 Quant Method : Z:\SVOASRV\HPCHEM1\BNA G\METHODS\8270-BG123019.M
 Quant Title : ASP BNA STANDARDS FOR 5 POINT CALIBRATION
 QLast Update : Tue Dec 31 13:32:23 2019
 Response via : Initial Calibration





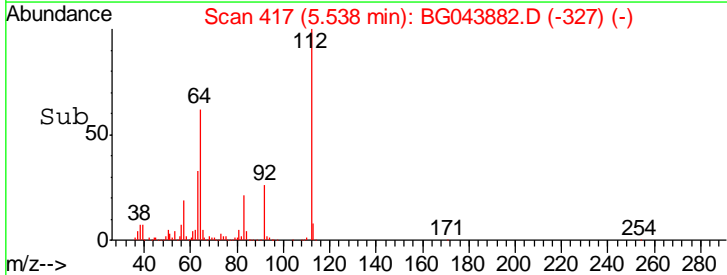
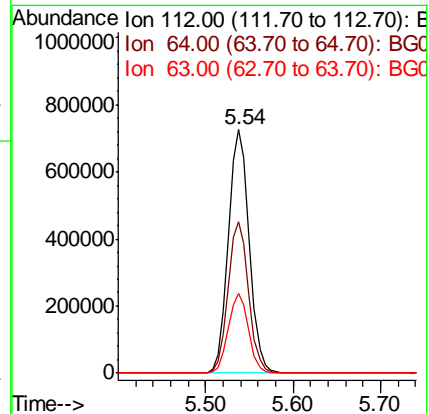
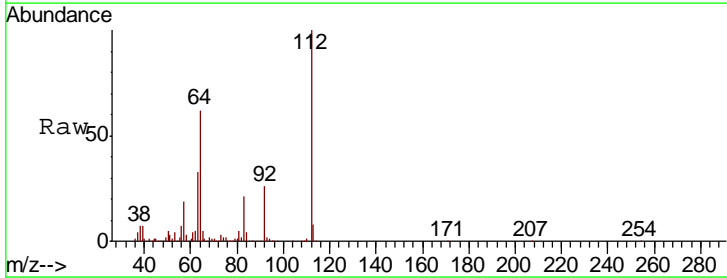
#1
 1,4-Dichlorobenzene-d4
 Concen: 20.000 ng
 RT: 7.96 min Scan# 830
 Delta R.T. 0.00 min
 Lab File: BG043882.D
 Acq: 3 Jan 2020 10:54

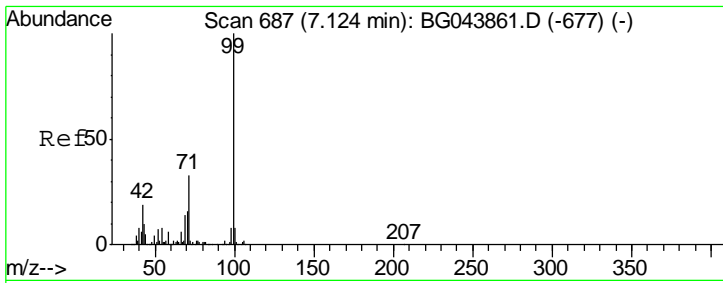
Tgt Ion	Resp	Lower	Upper
152	100		
150	157.0	127.0	190.4
115	57.1	47.8	71.8



#5
 2-Fluorophenol
 Concen: 156.242 ng
 RT: 5.54 min Scan# 417
 Delta R.T. 0.00 min
 Lab File: BG043882.D
 Acq: 3 Jan 2020 10:54

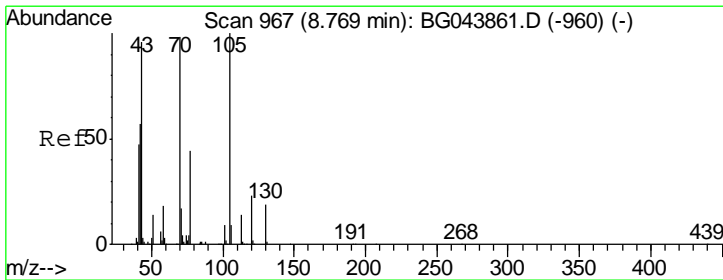
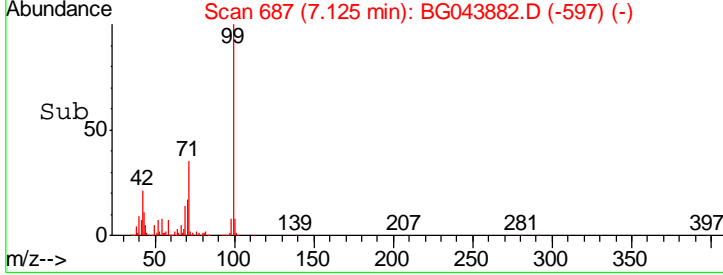
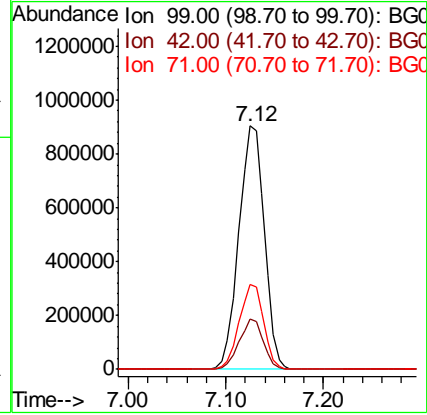
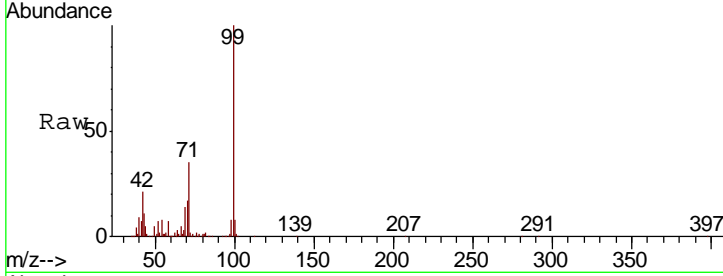
Tgt Ion	Resp	Lower	Upper
112	100		
64	62.2	47.8	71.6
63	32.8	24.3	36.5





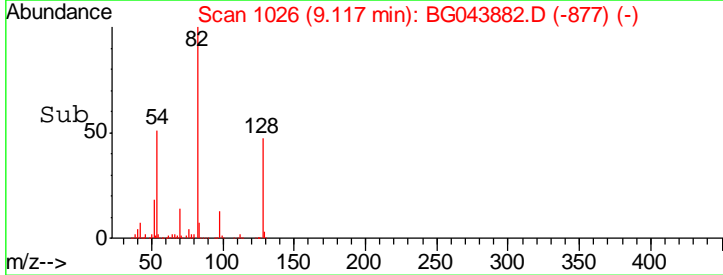
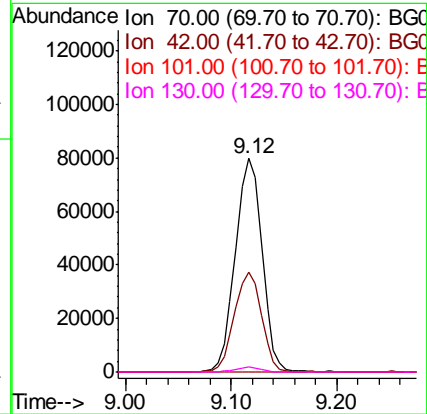
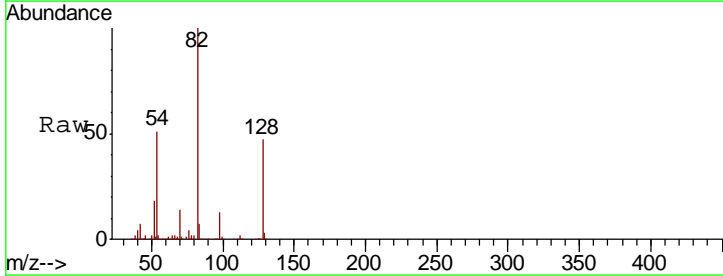
#7
 Phenol-d6
 Concen: 153.469 ng
 RT: 7.12 min Scan# 687
 Delta R.T. 0.00 min
 Lab File: BG043882.D
 Acq: 3 Jan 2020 10:54

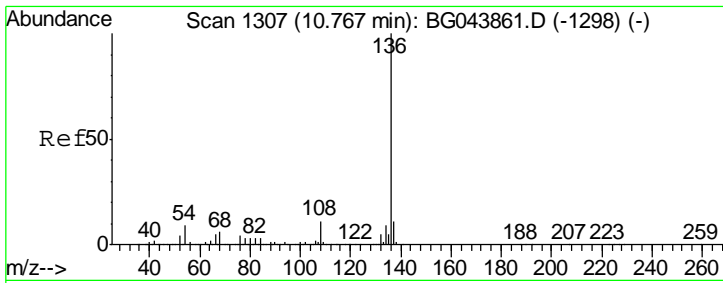
Tgt Ion	Resp	Lower	Upper
99	1635992		
42	20.6	14.9	22.3
71	34.6	26.4	39.6



#19
 n-Nitroso-di-n-propylamine
 Concen: 17.583 ng
 RT: 9.12 min Scan# 1026
 Delta R.T. 0.35 min
 Lab File: BG043882.D
 Acq: 3 Jan 2020 10:54

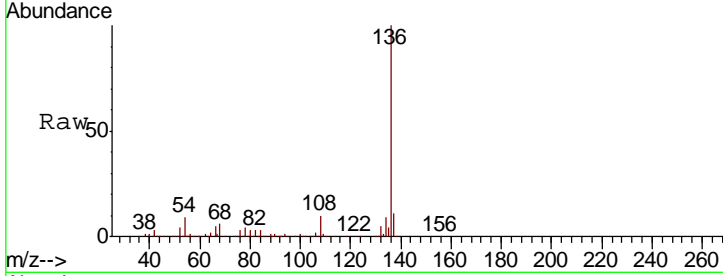
Tgt Ion	Resp	Lower	Upper
70	139584		
42	46.5	47.0	70.4#
101	0.0	7.2	10.8#
130	2.6	15.6	23.4#



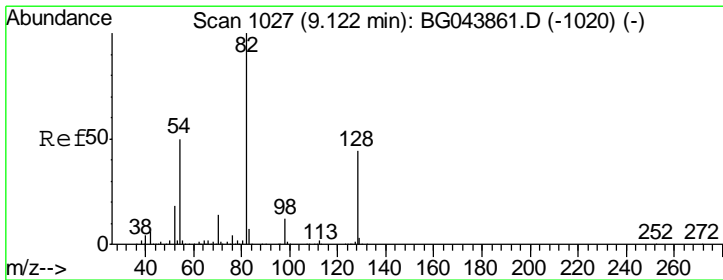
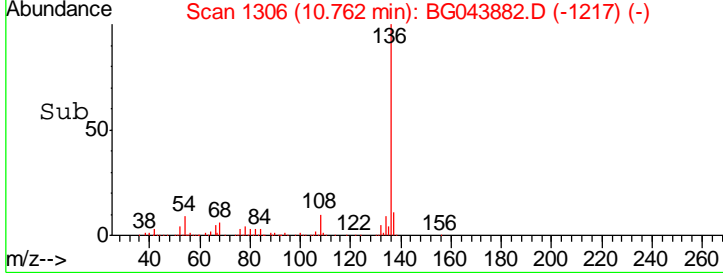
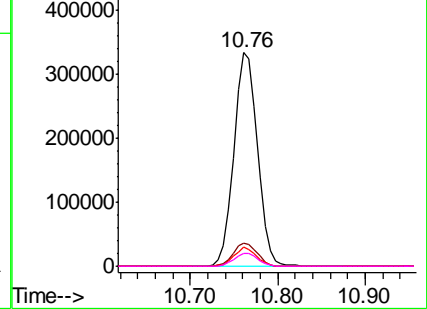


#21
 Naphthalene-d8
 Concen: 20.000 ng
 RT: 10.76 min Scan# 1306
 Delta R.T. -0.01 min
 Lab File: BG043882.D
 Acq: 3 Jan 2020 10:54

Tgt Ion	Resp	Lower	Upper
136	100		
137	10.9	8.8	13.2
54	9.2	7.0	10.4
68	6.3	4.9	7.3

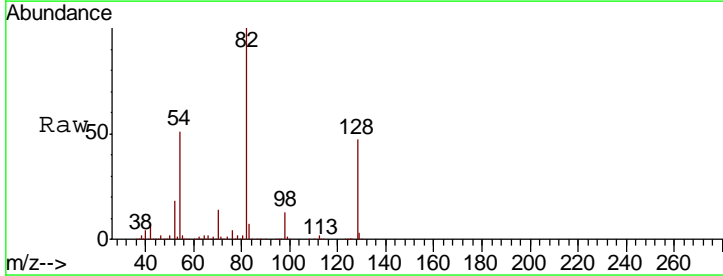


Abundance
 Ion 136.00 (135.70 to 136.70): E
 Ion 137.00 (136.70 to 137.70): E
 Ion 54.00 (53.70 to 54.70): BGC
 Ion 68.00 (67.70 to 68.70): BGC

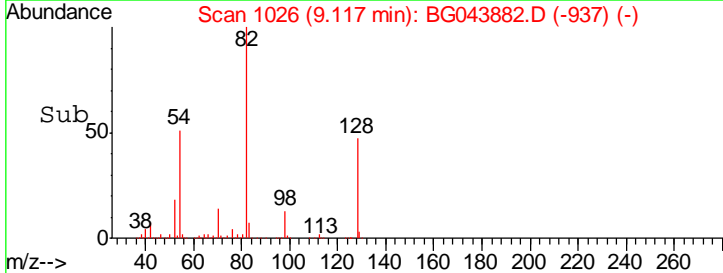
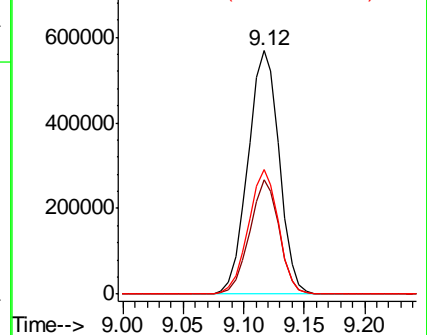


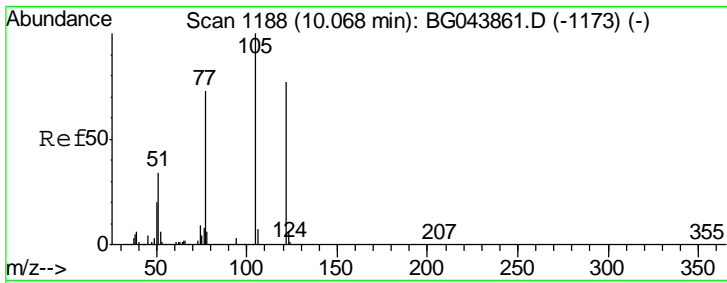
#23
 Nitrobenzene-d5
 Concen: 90.164 ng
 RT: 9.12 min Scan# 1026
 Delta R.T. -0.01 min
 Lab File: BG043882.D
 Acq: 3 Jan 2020 10:54

Tgt Ion	Resp	Lower	Upper
82	100		
128	46.9	35.1	52.7
54	51.2	40.1	60.1



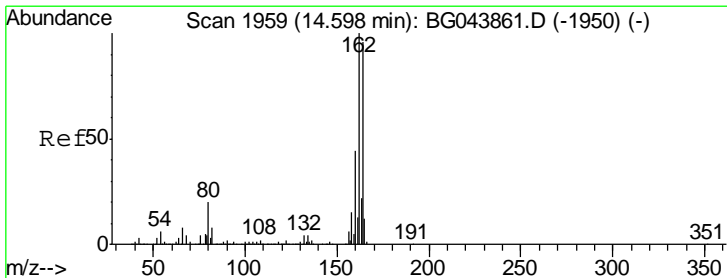
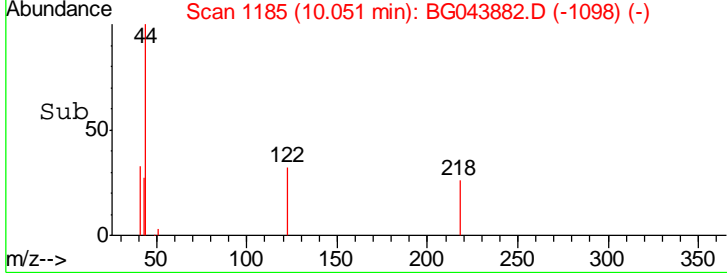
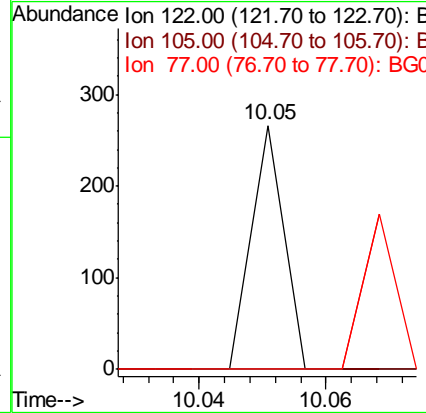
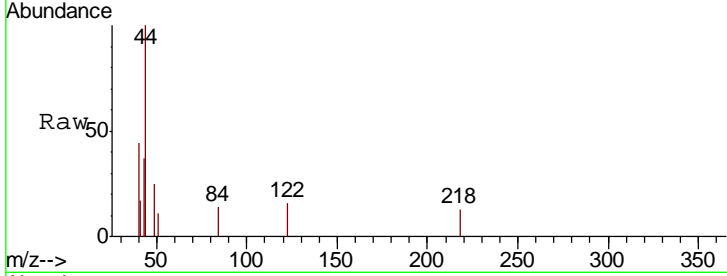
Abundance
 Ion 82.00 (81.70 to 82.70): BGC
 Ion 128.00 (127.70 to 128.70): E
 Ion 54.00 (53.70 to 54.70): BGC





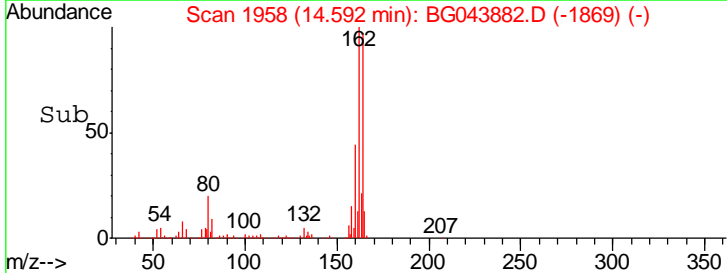
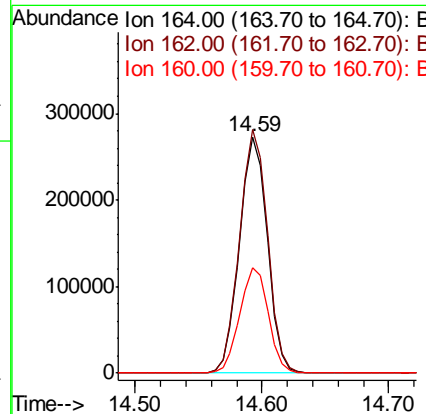
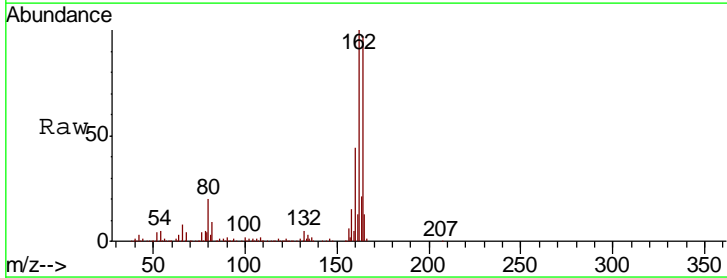
#32
 Benzoic acid
 Concen: 6.275 ng
 RT: 10.05 min Scan# 1185
 Delta R.T. -0.02 min
 Lab File: BG043882.D
 Acq: 3 Jan 2020 10:54

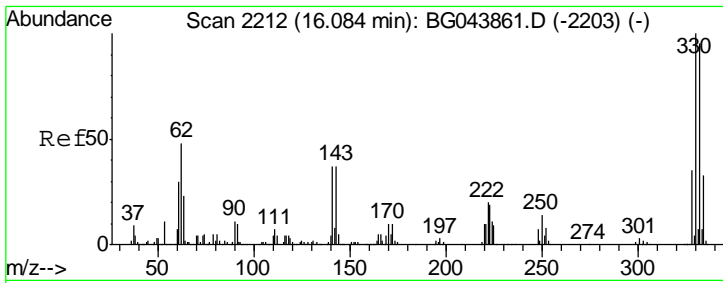
Tgt Ion	Ratio	Lower	Upper
122	100		
105	0.0	106.4	146.4#
77	0.0	74.6	114.6#



#39
 Acenaphthene-d10
 Concen: 20.000 ng
 RT: 14.59 min Scan# 1958
 Delta R.T. -0.01 min
 Lab File: BG043882.D
 Acq: 3 Jan 2020 10:54

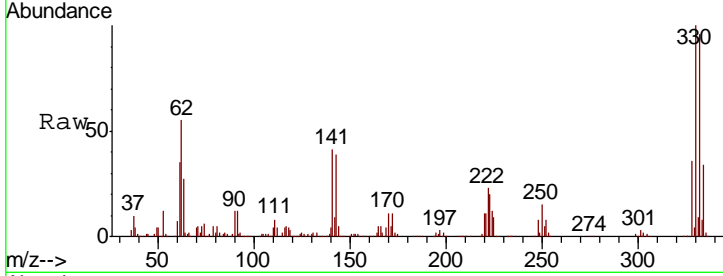
Tgt Ion	Ratio	Lower	Upper
164	100		
162	103.2	83.0	124.4
160	44.9	36.1	54.1



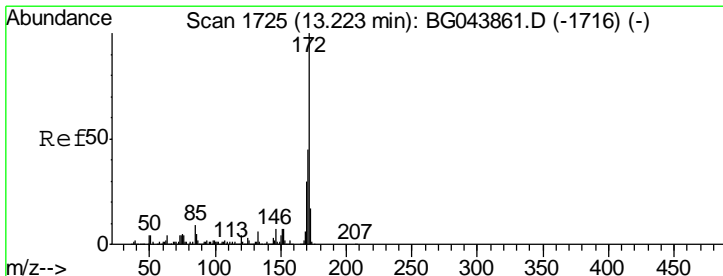
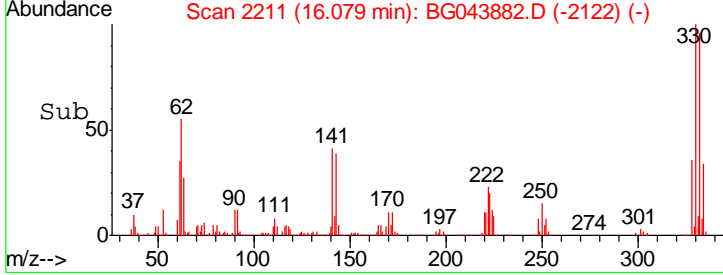
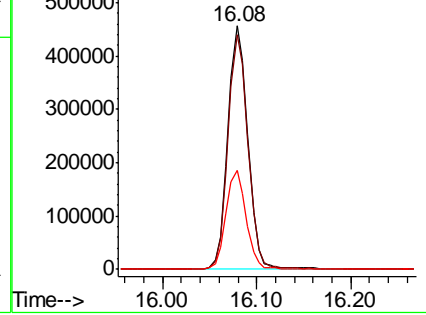


#42
 2,4,6-Tribromophenol
 Concen: 156.599 ng
 RT: 16.08 min Scan# 2211
 Delta R.T. -0.01 min
 Lab File: BG043882.D
 Acq: 3 Jan 2020 10:54

Tgt Ion	Resp	Lower	Upper
330	677918		
332	96.0	77.2	115.8
141	41.1	33.1	49.7

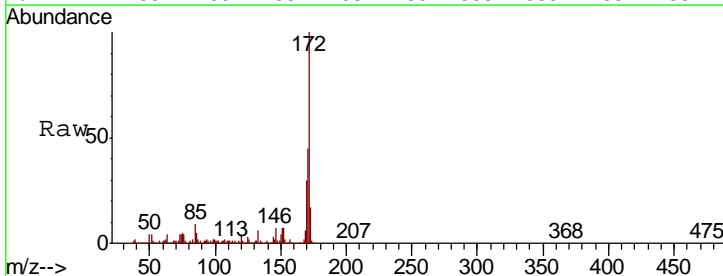


Abundance Ion 329.80 (329.50 to 330.50): E
 Ion 331.80 (331.50 to 332.50): E
 Ion 141.00 (140.70 to 141.70): E

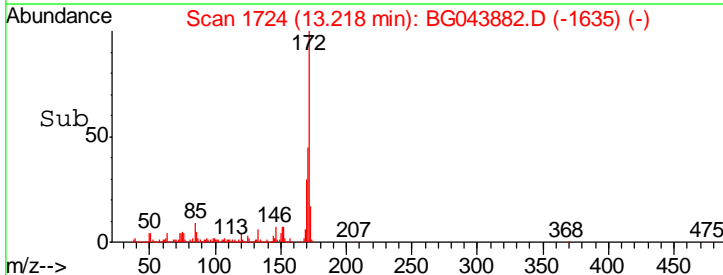
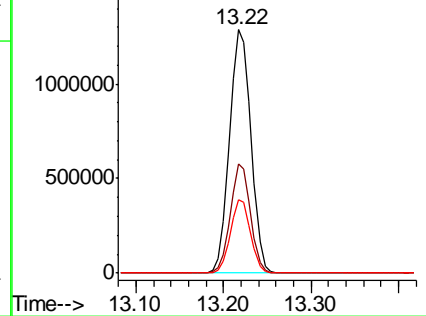


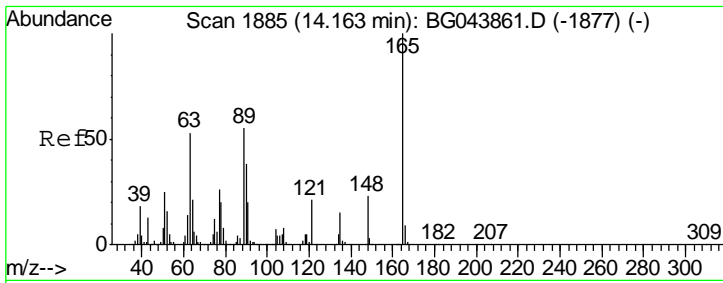
#45
 2-Fluorobiphenyl
 Concen: 95.019 ng
 RT: 13.22 min Scan# 1724
 Delta R.T. -0.01 min
 Lab File: BG043882.D
 Acq: 3 Jan 2020 10:54

Tgt Ion	Resp	Lower	Upper
172	2169527		
171	44.6	35.8	53.8
170	30.0	24.2	36.4



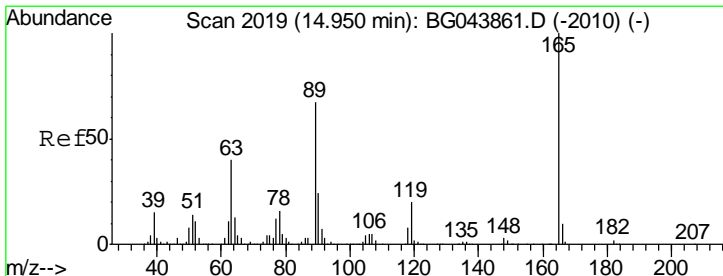
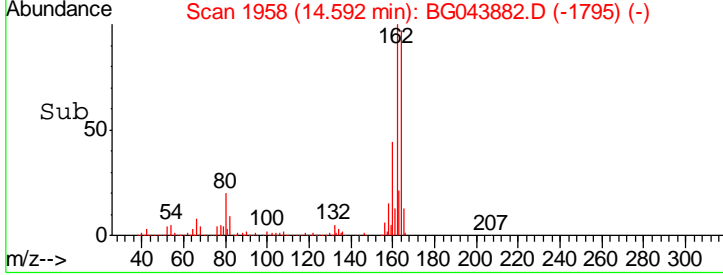
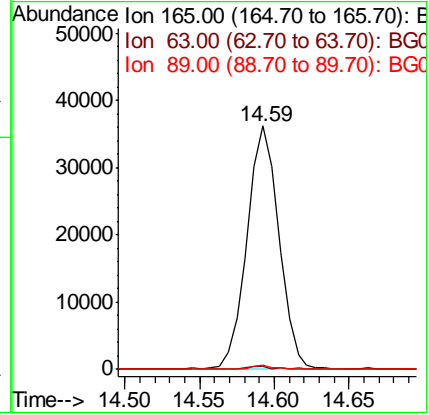
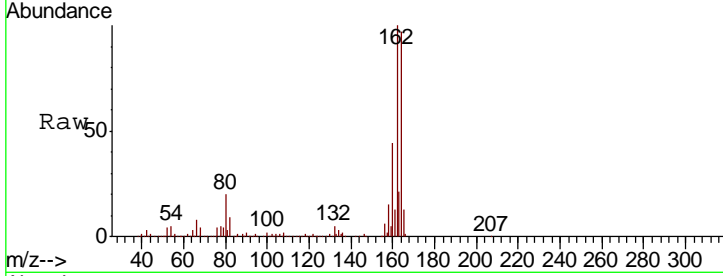
Abundance Ion 172.00 (171.70 to 172.70): E
 Ion 171.00 (170.70 to 171.70): E
 Ion 170.00 (169.70 to 170.70): E





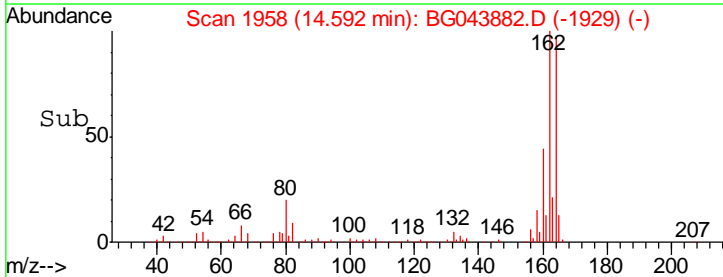
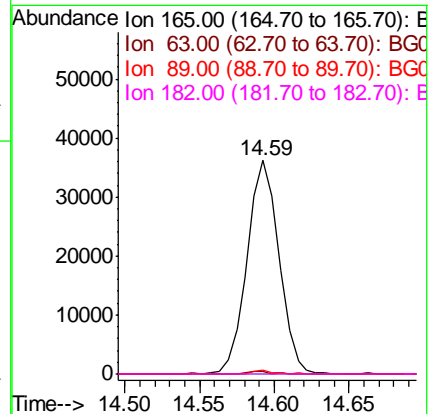
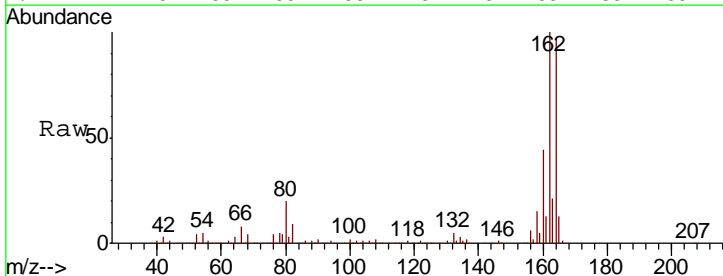
#51
 2,6-Dinitrotoluene
 Concen: 8.064 ng
 RT: 14.59 min Scan# 1958
 Delta R.T. 0.43 min
 Lab File: BG043882.D
 Acq: 3 Jan 2020 10:54

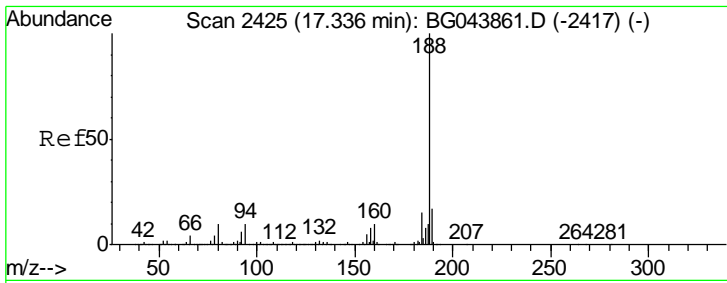
Tgt Ion	Resp	Lower	Upper
165	100		
63	1.1	43.1	64.7#
89	1.9	43.8	65.6#



#57
 2,4-Dinitrotoluene
 Concen: 5.927 ng
 RT: 14.59 min Scan# 1958
 Delta R.T. -0.36 min
 Lab File: BG043882.D
 Acq: 3 Jan 2020 10:54

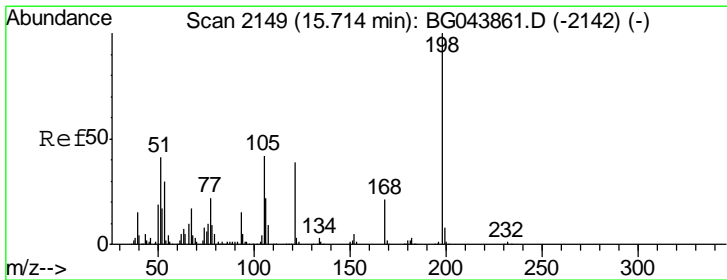
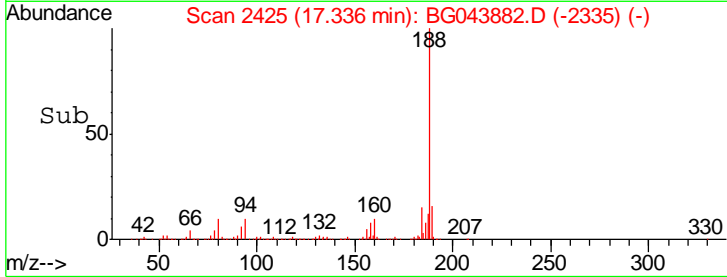
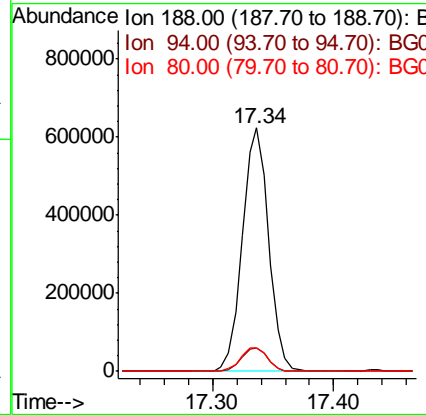
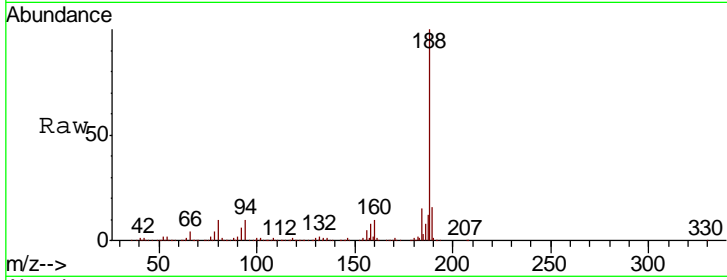
Tgt Ion	Resp	Lower	Upper
165	100		
63	1.1	31.9	47.9#
89	1.9	53.8	80.6#
182	0.0	2.0	3.0#





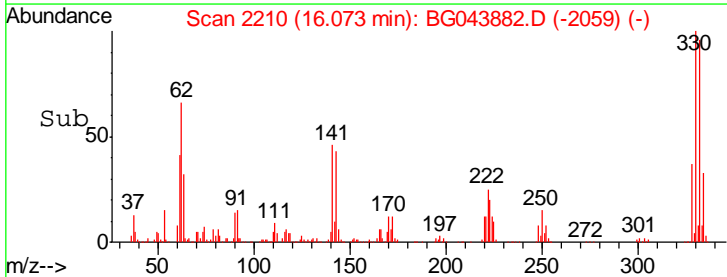
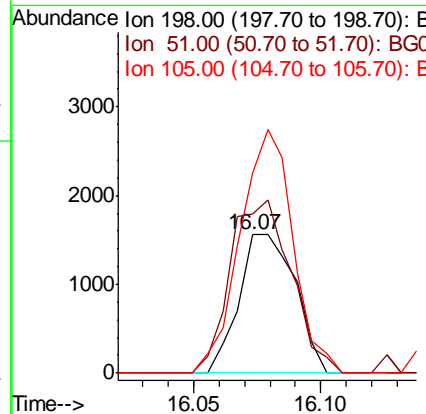
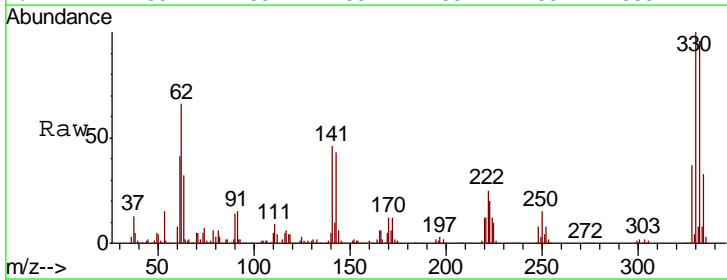
#64
 Phenanthrene-d10
 Concen: 20.000 ng
 RT: 17.34 min Scan# 2425
 Delta R.T. 0.00 min
 Lab File: BG043882.D
 Acq: 3 Jan 2020 10:54

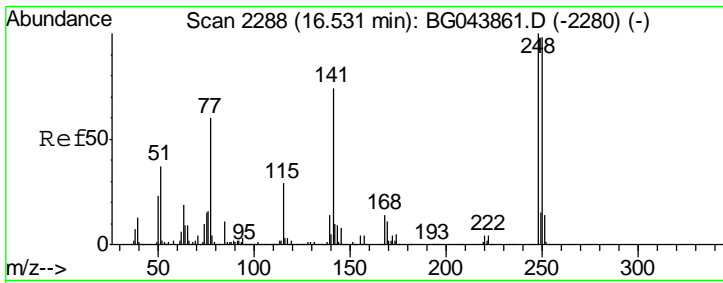
Tgt Ion	Resp	Lower	Upper
188	100		
94	9.5	7.9	11.9
80	9.8	8.2	12.4



#65
 4,6-Dinitro-2-methylphenol
 Concen: 4.840 ng
 RT: 16.07 min Scan# 2210
 Delta R.T. 0.36 min
 Lab File: BG043882.D
 Acq: 3 Jan 2020 10:54

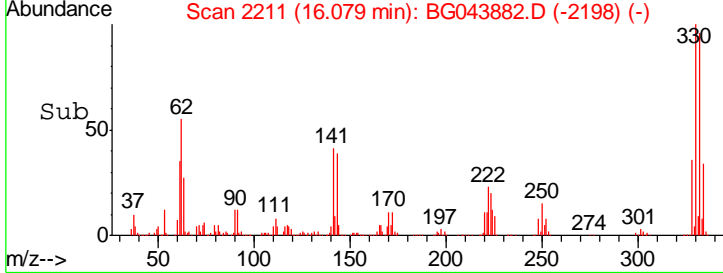
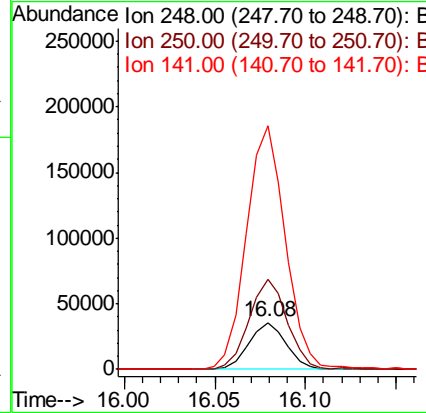
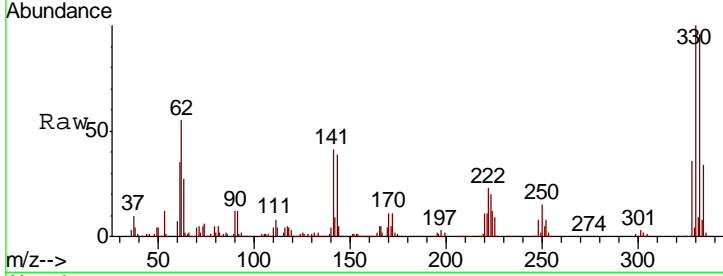
Tgt Ion	Resp	Lower	Upper
198	100		
51	115.0	22.5	62.5#
105	144.6	22.3	62.3#





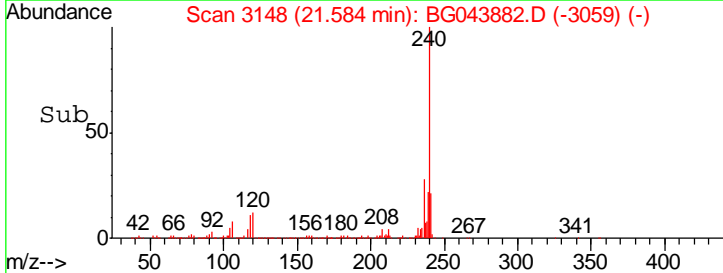
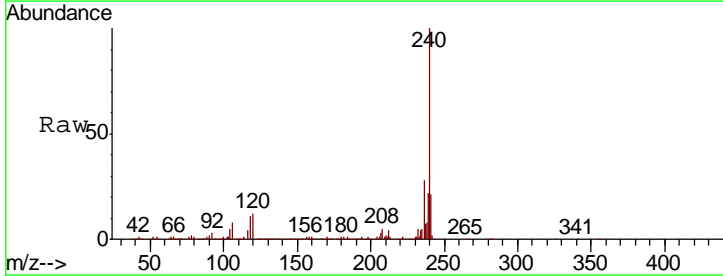
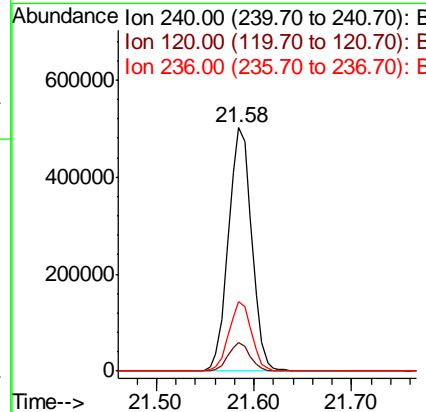
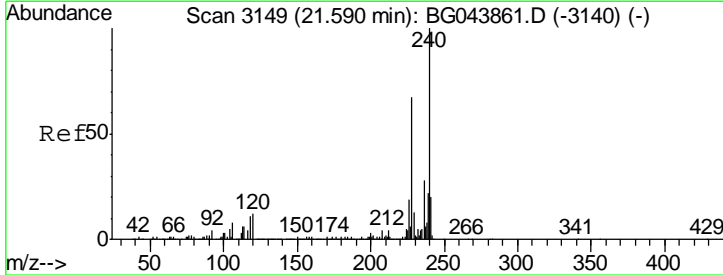
#67
 4-Bromophenyl-phenylether
 Concen: 4.767 ng
 RT: 16.08 min Scan# 2211
 Delta R.T. -0.45 min
 Lab File: BG043882.D
 Acq: 3 Jan 2020 10:54

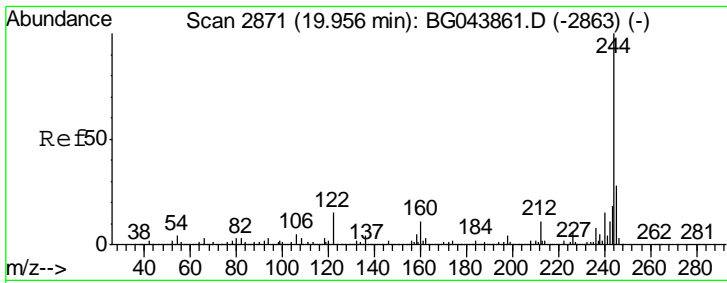
Tgt Ion	Resp	Lower	Upper
248	50712		
250	191.7	78.2	117.2#
141	520.9	59.3	88.9#



#76
 Chrysene-d12
 Concen: 20.000 ng
 RT: 21.58 min Scan# 3148
 Delta R.T. -0.01 min
 Lab File: BG043882.D
 Acq: 3 Jan 2020 10:54

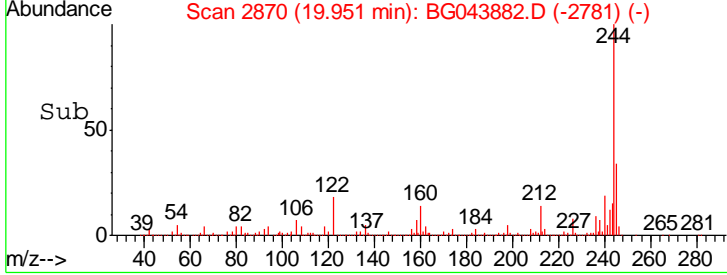
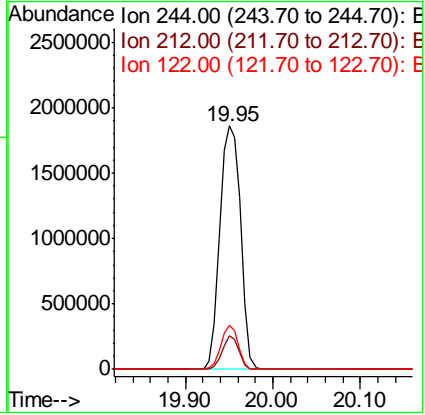
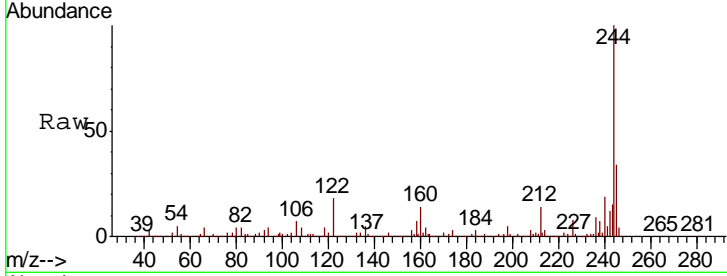
Tgt Ion	Resp	Lower	Upper
240	830000		
120	11.9	9.6	14.4
236	28.4	22.2	33.2





#79
 Terphenyl-d14
 Concen: 90.500 ng
 RT: 19.95 min Scan# 2870
 Delta R.T. -0.01 min
 Lab File: BG043882.D
 Acq: 3 Jan 2020 10:54

Tgt Ion	Resp	Lower	Upper
244	100		
212	13.6	8.6	13.0#
122	18.2	11.9	17.9#



#87
 Perylene-d12
 Concen: 20.000 ng
 RT: 24.72 min Scan# 3681
 Delta R.T. -0.01 min
 Lab File: BG043882.D
 Acq: 3 Jan 2020 10:54

Tgt Ion	Resp	Lower	Upper
264	100		
260	24.0	20.4	30.6
265	22.1	17.4	26.2

