

Data Path : Z:\SVOASRV\HPCHEM1\BNA G\DATA\BG010320\  
 Data File : BG043921.D  
 Acq On : 4 Jan 2020 14:11  
 Operator : JU  
 Sample : K6315-03  
 Misc :  
 ALS Vial : 33 Sample Multiplier: 1

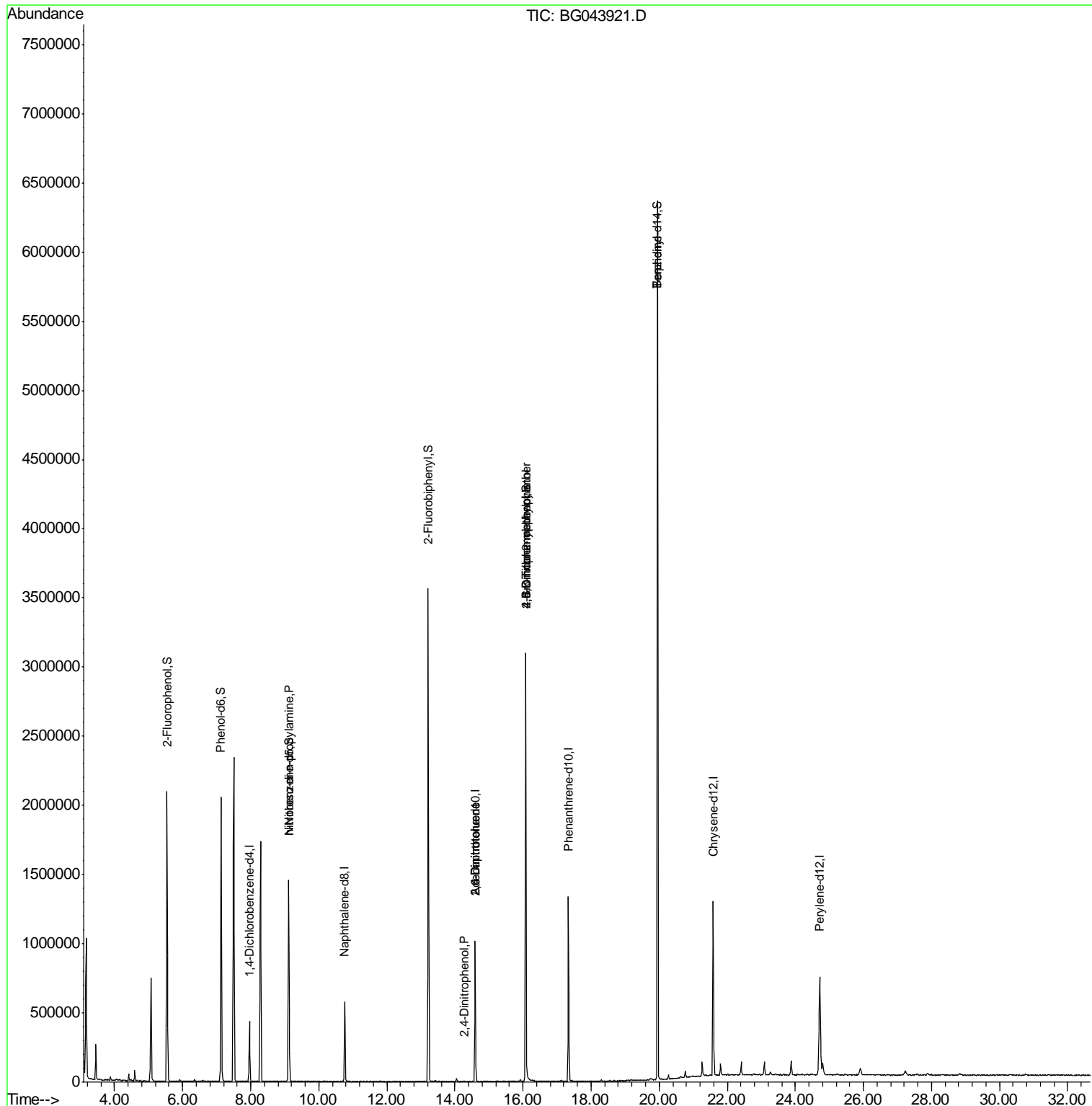
Quant Time: Jan 06 04:31:55 2020  
 Quant Method : Z:\SVOASRV\HPCHEM1\BNA G\METHODS\8270-BG123019.M  
 Quant Title : ASP BNA STANDARDS FOR 5 POINT CALIBRATION  
 QLast Update : Tue Dec 31 13:32:23 2019  
 Response via : Initial Calibration

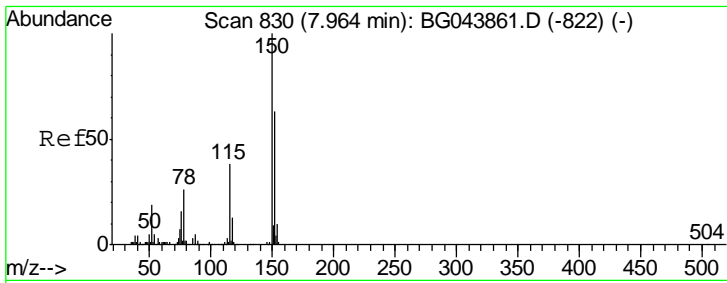
Internal Standards	R.T.	QIon	Response	Conc	Units	Dev(Min)
1) 1,4-Dichlorobenzene-d4	7.96	152	124386	20.00	ng	0.00
21) Naphthalene-d8	10.76	136	525568	20.00	ng	0.00
39) Acenaphthene-d10	14.59	164	352338	20.00	ng	0.00
64) Phenanthrene-d10	17.34	188	779773	20.00	ng	0.00
76) Chrysene-d12	21.58	240	684848	20.00	ng	0.00
87) Perylene-d12	24.72	264	748268	20.00	ng	0.00
System Monitoring Compounds						
5) 2-Fluorophenol	5.54	112	943991	139.35	ng	0.00
7) Phenol-d6	7.13	99	1225794	129.45	ng	0.00
23) Nitrobenzene-d5	9.12	82	895956	91.20	ng	0.00
42) 2,4,6-Tribromophenol	16.08	330	563786	152.91	ng	0.00
45) 2-Fluorobiphenyl	13.22	172	1891527	97.26	ng	0.00
79) Terphenyl-d14	19.95	244	2717480	100.11	ng	0.00
Target Compounds						
19) n-Nitroso-di-n-propylamine	9.12	70	119340	16.923	ng	# 80
51) 2,6-Dinitrotoluene	14.59	165	46384	8.203	ng	# 26
54) 2,4-Dinitrophenol	14.29	184	62	5.503	ng	# 20
57) 2,4-Dinitrotoluene	14.59	165	46384	6.029	ng	# 27
65) 4,6-Dinitro-2-methylphenol	16.08	198	2062	4.856	ng	# 1
67) 4-Bromophenyl-phenylether	16.08	248	41211	4.699	ng	# 1
77) Benzidine	19.95	184	58625	3.406	ng	# 90

(#) = qualifier out of range (m) = manual integration (+) = signals summed

Data Path : Z:\SVOASRV\HPCHEM1\BNA G\DATA\BG010320\  
 Data File : BG043921.D  
 Acq On : 4 Jan 2020 14:11  
 Operator : JU  
 Sample : K6315-03  
 Misc :  
 ALS Vial : 33 Sample Multiplier: 1

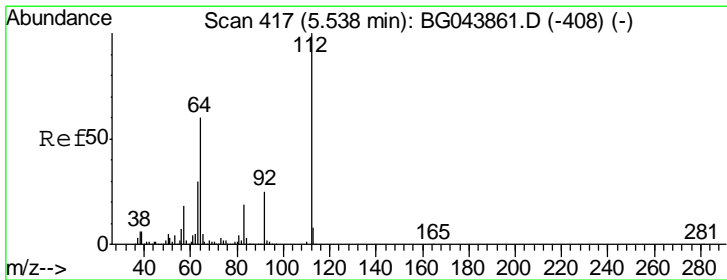
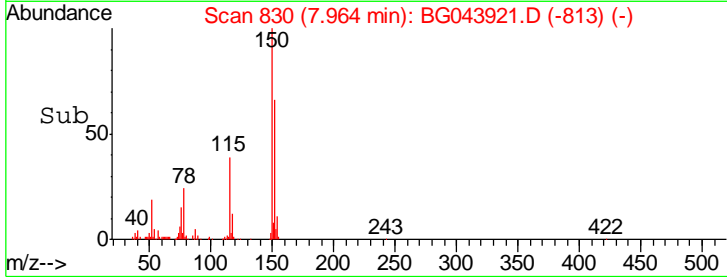
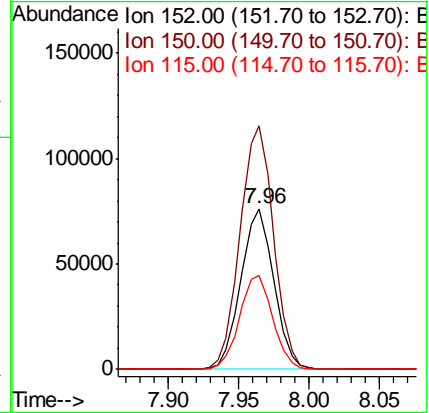
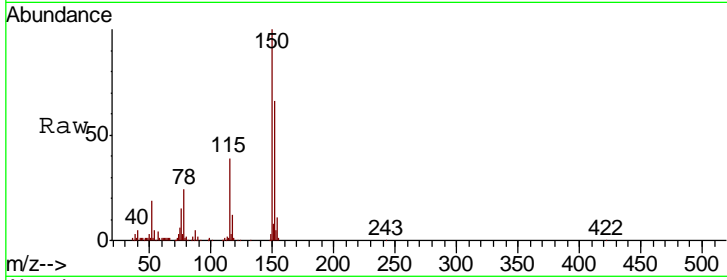
Quant Time: Jan 06 04:31:55 2020  
 Quant Method : Z:\SVOASRV\HPCHEM1\BNA G\METHODS\8270-BG123019.M  
 Quant Title : ASP BNA STANDARDS FOR 5 POINT CALIBRATION  
 QLast Update : Tue Dec 31 13:32:23 2019  
 Response via : Initial Calibration





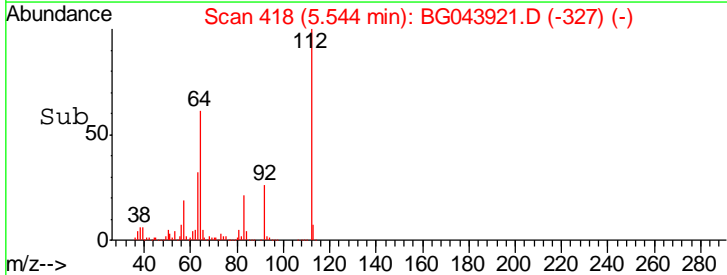
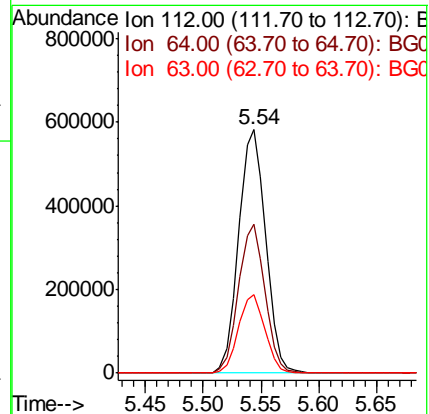
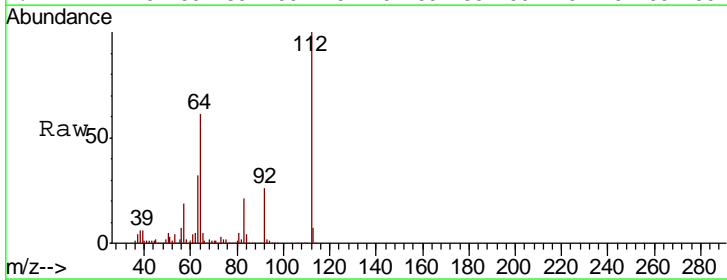
#1  
 1,4-Dichlorobenzene-d4  
 Concen: 20.000 ng  
 RT: 7.96 min Scan# 830  
 Delta R.T. 0.00 min  
 Lab File: BG043921.D  
 Acq: 4 Jan 2020 14:11

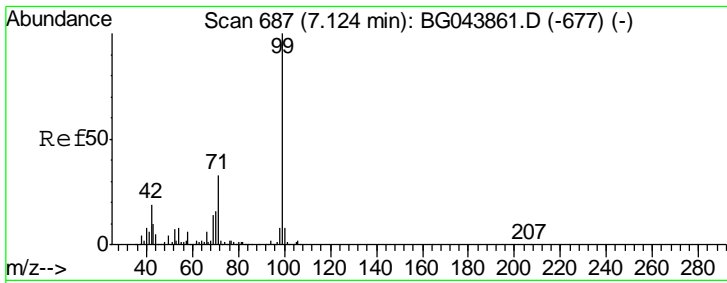
Tgt Ion	Resp	Lower	Upper
152	124386		
150	151.5	127.0	190.4
115	58.5	47.8	71.8



#5  
 2-Fluorophenol  
 Concen: 139.347 ng  
 RT: 5.54 min Scan# 418  
 Delta R.T. 0.01 min  
 Lab File: BG043921.D  
 Acq: 4 Jan 2020 14:11

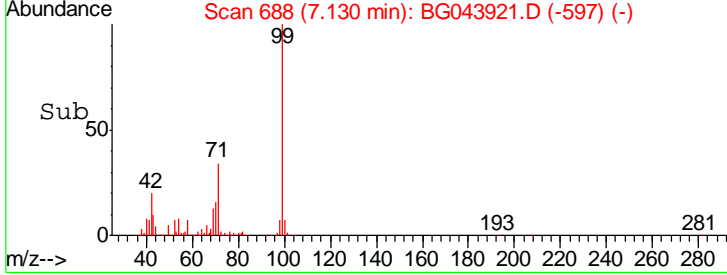
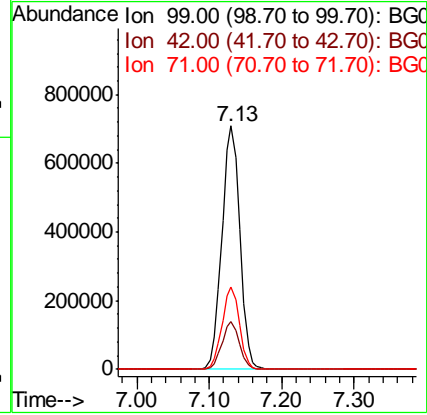
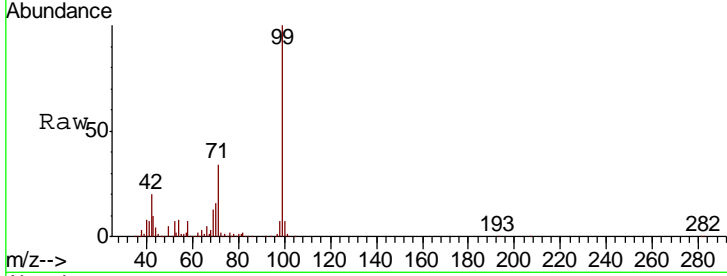
Tgt Ion	Resp	Lower	Upper
112	943991		
64	61.3	47.8	71.6
63	32.2	24.3	36.5





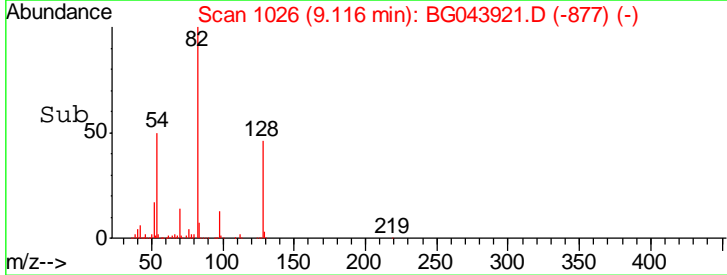
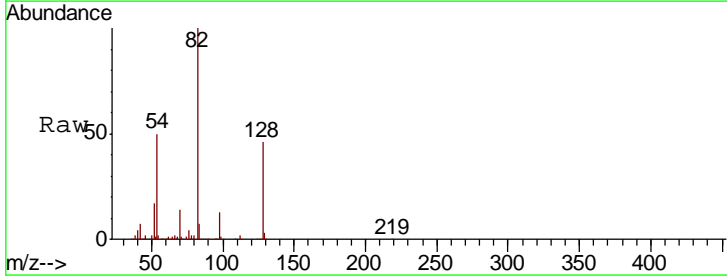
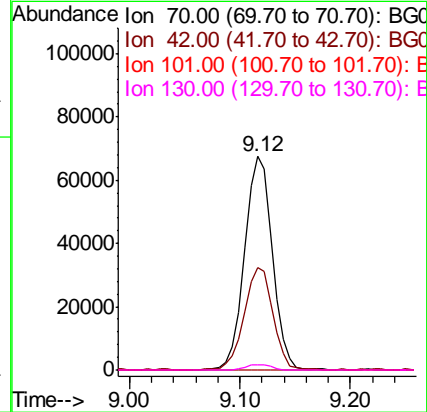
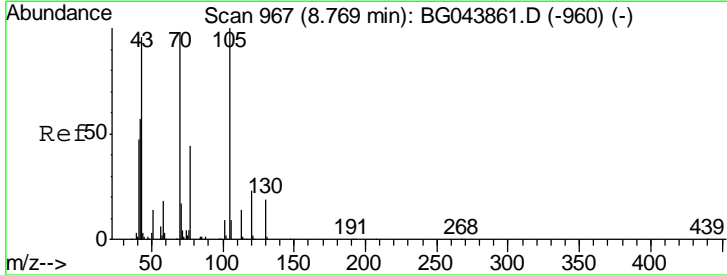
#7  
 Phenol-d6  
 Concen: 129.448 ng  
 RT: 7.13 min Scan# 688  
 Delta R.T. 0.01 min  
 Lab File: BG043921.D  
 Acq: 4 Jan 2020 14:11

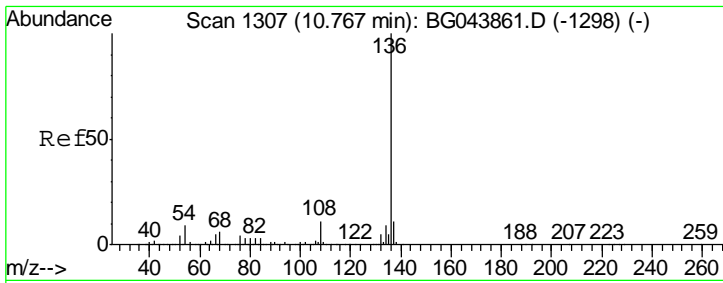
Tgt Ion	Resp	Lower	Upper
99	100		
42	19.7	14.9	22.3
71	34.0	26.4	39.6



#19  
 n-Nitroso-di-n-propylamine  
 Concen: 16.923 ng  
 RT: 9.12 min Scan# 1026  
 Delta R.T. 0.35 min  
 Lab File: BG043921.D  
 Acq: 4 Jan 2020 14:11

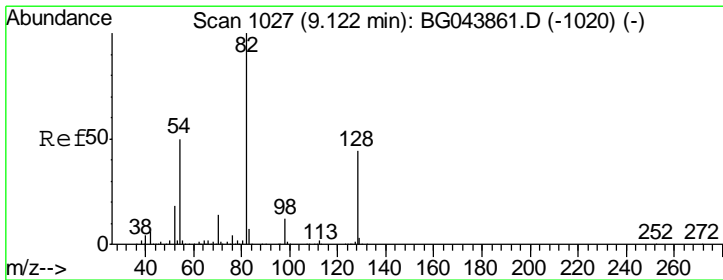
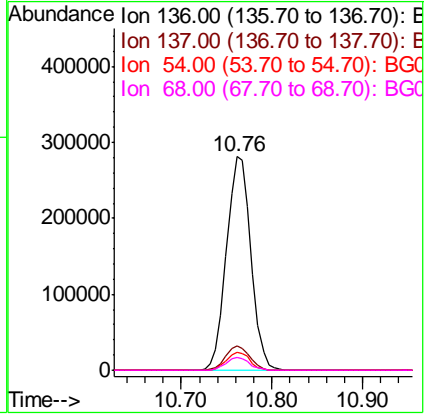
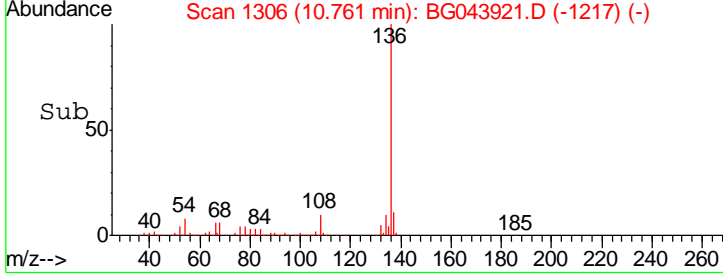
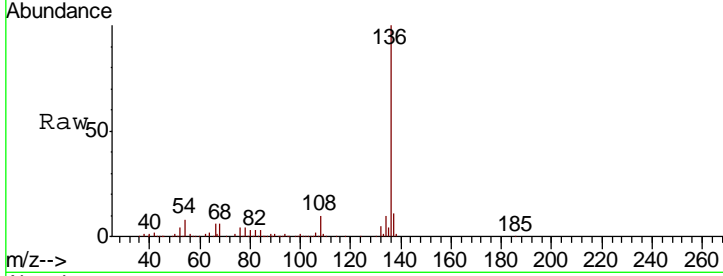
Tgt Ion	Resp	Lower	Upper
70	100		
42	48.2	47.0	70.4
101	0.0	7.2	10.8#
130	2.3	15.6	23.4#





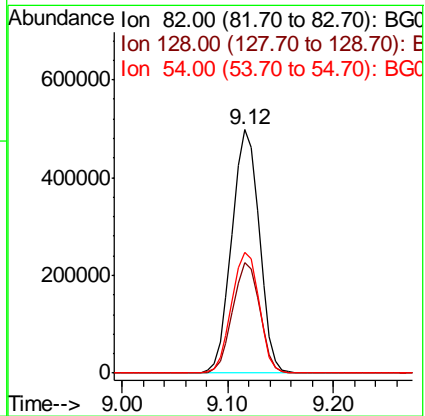
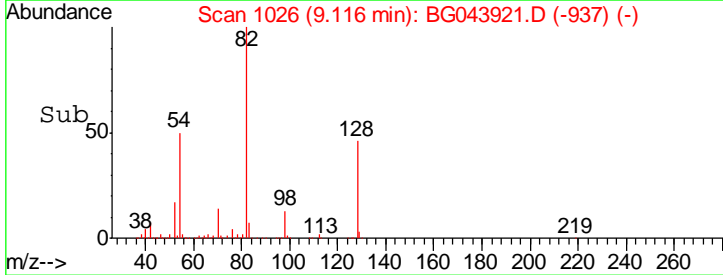
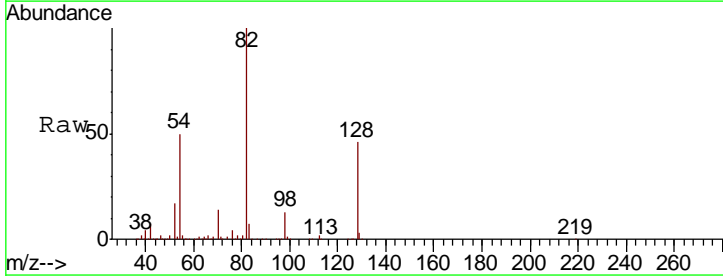
#21  
 Naphthalene-d8  
 Concen: 20.000 ng  
 RT: 10.76 min Scan# 1306  
 Delta R.T. -0.01 min  
 Lab File: BG043921.D  
 Acq: 4 Jan 2020 14:11

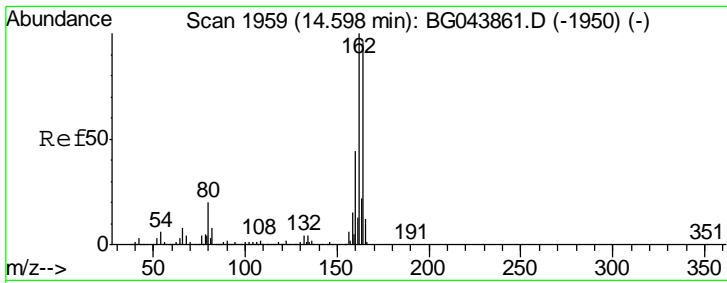
Tgt Ion	Resp	Lower	Upper
136	525568		
137	11.5	8.8	13.2
54	8.3	7.0	10.4
68	6.3	4.9	7.3



#23  
 Nitrobenzene-d5  
 Concen: 91.196 ng  
 RT: 9.12 min Scan# 1026  
 Delta R.T. -0.01 min  
 Lab File: BG043921.D  
 Acq: 4 Jan 2020 14:11

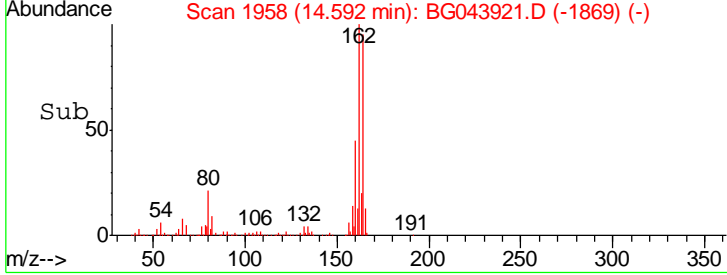
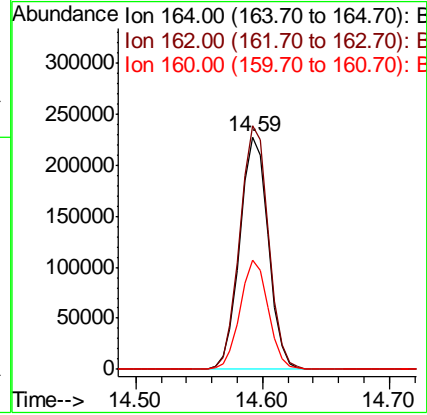
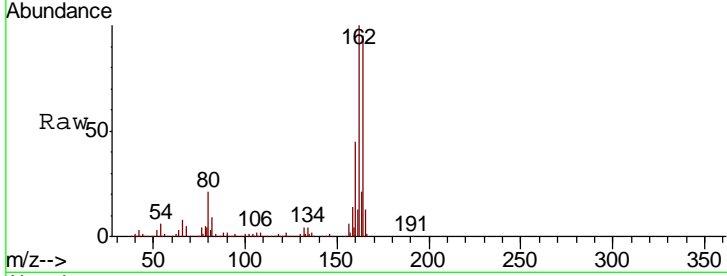
Tgt Ion	Resp	Lower	Upper
82	895956		
128	45.6	35.1	52.7
54	49.6	40.1	60.1





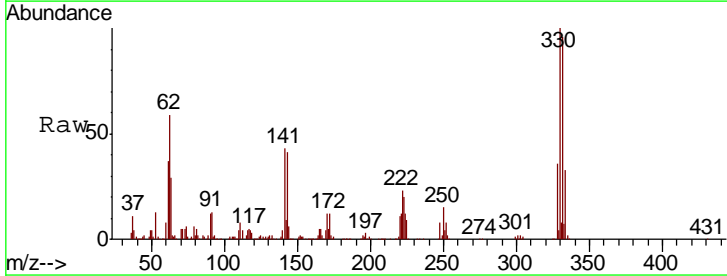
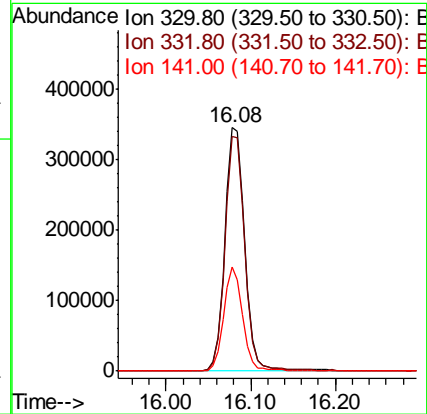
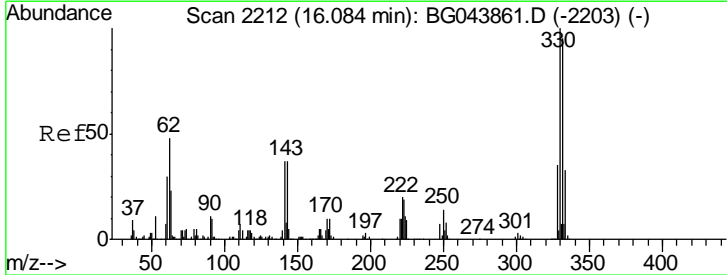
#39  
 Acenaphthene-d10  
 Concen: 20.000 ng  
 RT: 14.59 min Scan# 1958  
 Delta R.T. -0.01 min  
 Lab File: BG043921.D  
 Acq: 4 Jan 2020 14:11

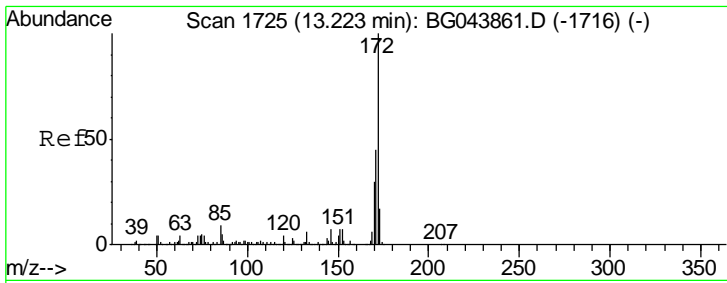
Tgt Ion	Resp	Lower	Upper
164	100		
162	104.7	83.0	124.4
160	47.2	36.1	54.1



#42  
 2,4,6-Tribromophenol  
 Concen: 152.906 ng  
 RT: 16.08 min Scan# 2211  
 Delta R.T. -0.01 min  
 Lab File: BG043921.D  
 Acq: 4 Jan 2020 14:11

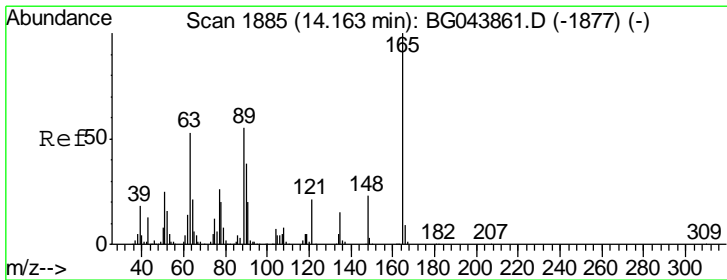
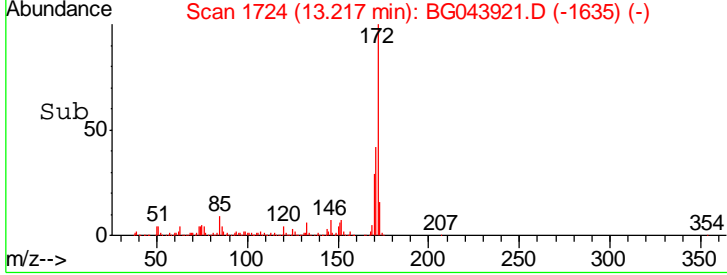
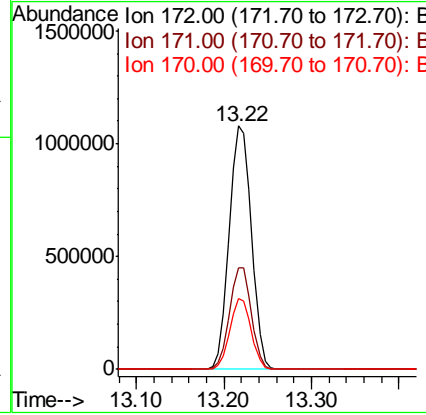
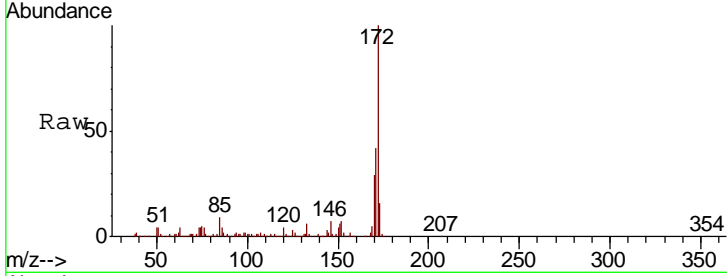
Tgt Ion	Resp	Lower	Upper
330	100		
332	96.8	77.2	115.8
141	41.0	33.1	49.7





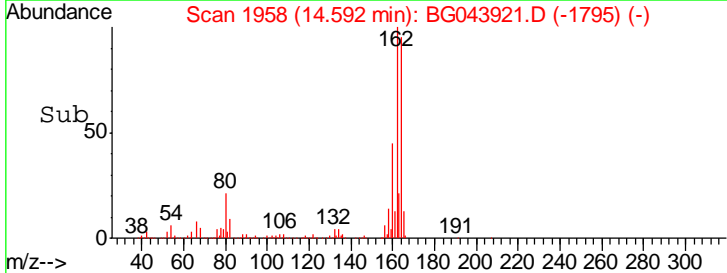
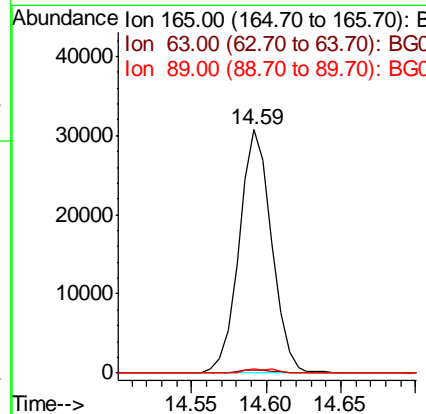
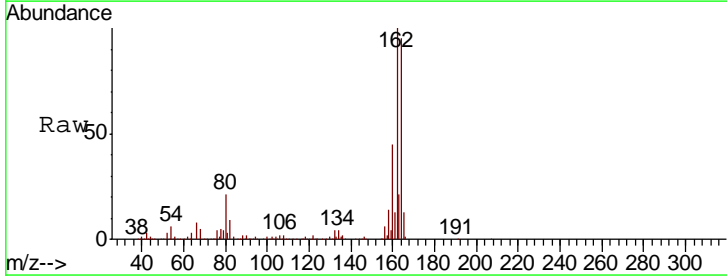
#45  
 2-Fluorobiphenyl  
 Concen: 97.265 ng  
 RT: 13.22 min Scan# 1724  
 Delta R.T. -0.01 min  
 Lab File: BG043921.D  
 Acq: 4 Jan 2020 14:11

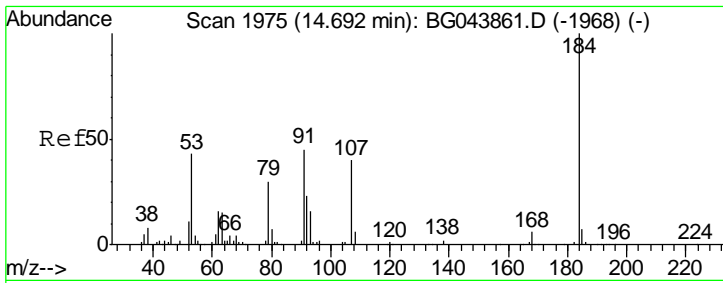
Tgt Ion	Resp	Lower	Upper
172	1891527		
171	100	35.8	53.8
170	29.1	24.2	36.4



#51  
 2,6-Dinitrotoluene  
 Concen: 8.203 ng  
 RT: 14.59 min Scan# 1958  
 Delta R.T. 0.43 min  
 Lab File: BG043921.D  
 Acq: 4 Jan 2020 14:11

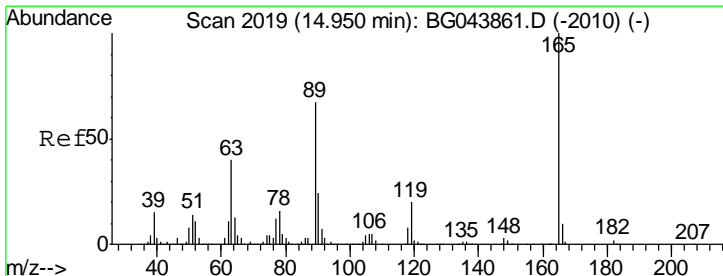
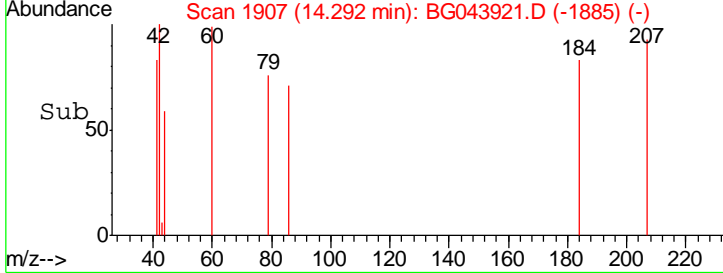
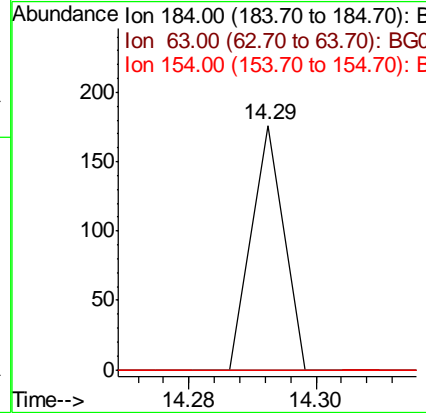
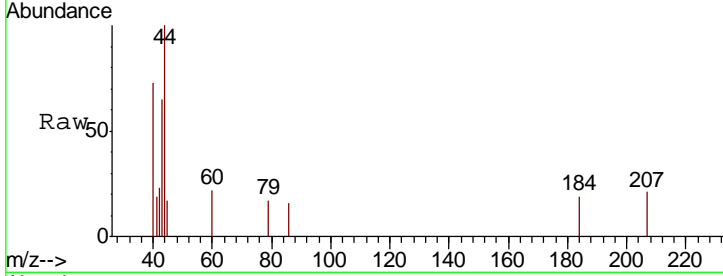
Tgt Ion	Resp	Lower	Upper
165	46384		
63	100	43.1	64.7#
89	1.3	43.8	65.6#





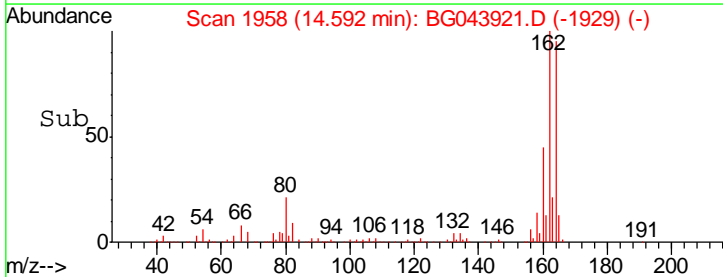
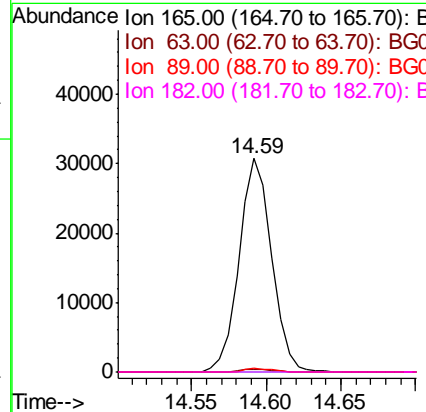
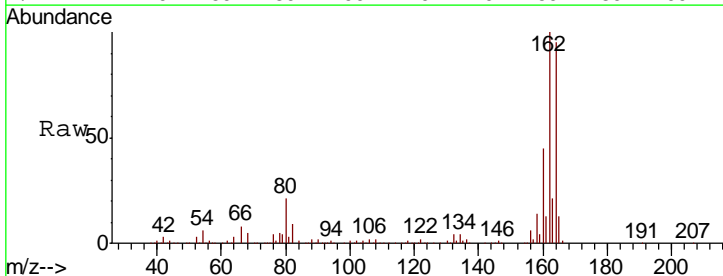
#54  
 2,4-Dinitrophenol  
 Concen: 5.503 ng  
 RT: 14.29 min Scan# 1907  
 Delta R.T. -0.40 min  
 Lab File: BG043921.D  
 Acq: 4 Jan 2020 14:11

Tgt Ion	Resp	Lower	Upper
184	100		
63	0.0	46.6	70.0#
154	0.0	50.2	75.4#

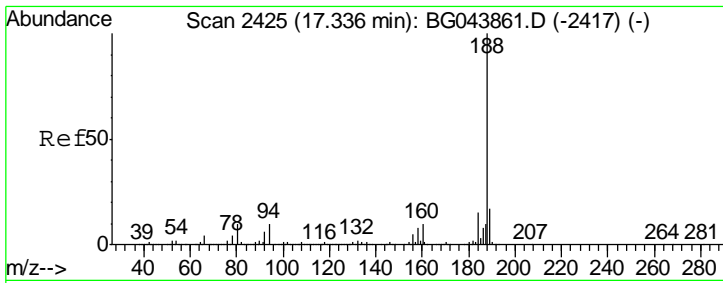


#57  
 2,4-Dinitrotoluene  
 Concen: 6.029 ng  
 RT: 14.59 min Scan# 1958  
 Delta R.T. -0.36 min  
 Lab File: BG043921.D  
 Acq: 4 Jan 2020 14:11

Tgt Ion	Resp	Lower	Upper
165	100		
63	1.3	31.9	47.9#
89	1.7	53.8	80.6#
182	0.0	2.0	3.0#

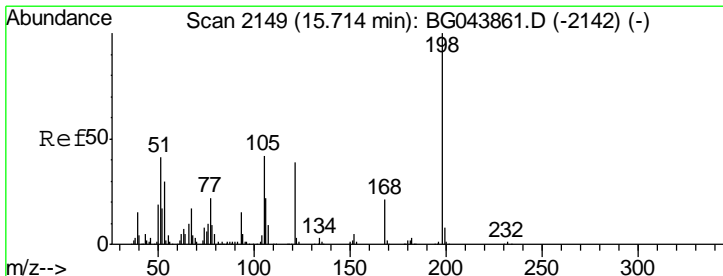
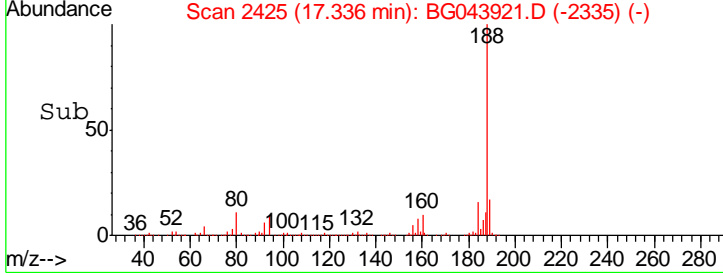
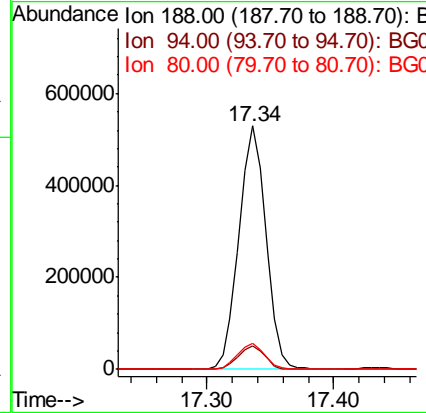
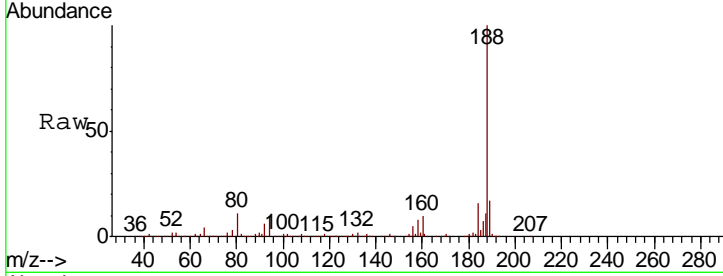






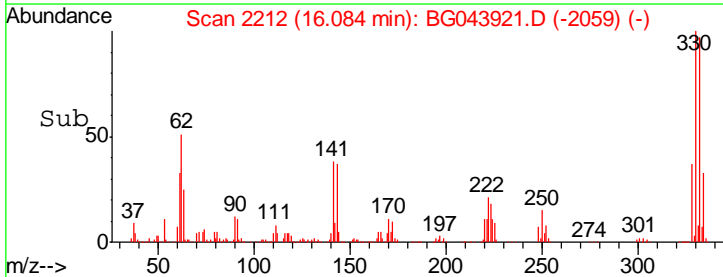
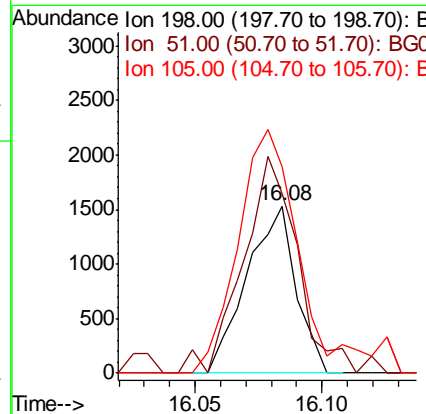
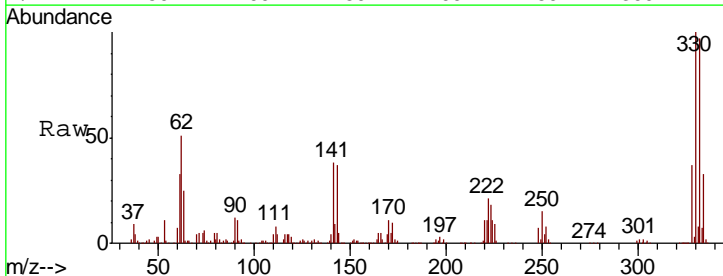
#64  
 Phenanthrene-d10  
 Concen: 20.000 ng  
 RT: 17.34 min Scan# 2425  
 Delta R.T. 0.00 min  
 Lab File: BG043921.D  
 Acq: 4 Jan 2020 14:11

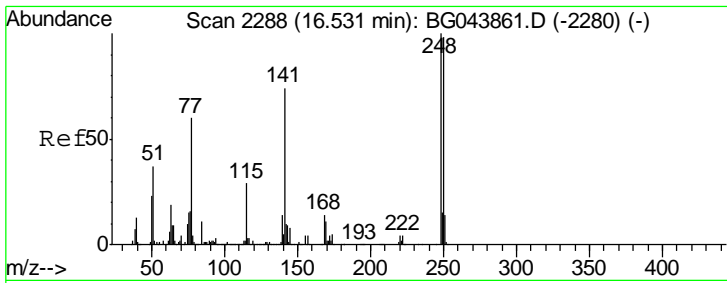
Tgt Ion	Resp	Lower	Upper
188	100		
94	9.6	7.9	11.9
80	10.6	8.2	12.4



#65  
 4,6-Dinitro-2-methylphenol  
 Concen: 4.856 ng  
 RT: 16.08 min Scan# 2212  
 Delta R.T. 0.37 min  
 Lab File: BG043921.D  
 Acq: 4 Jan 2020 14:11

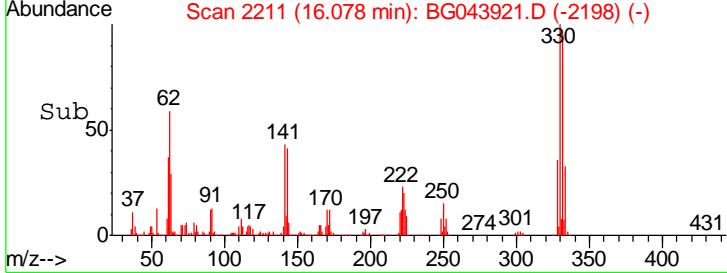
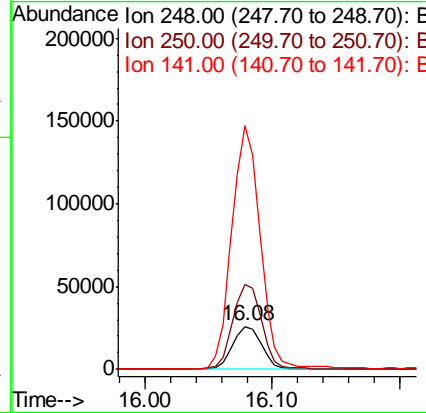
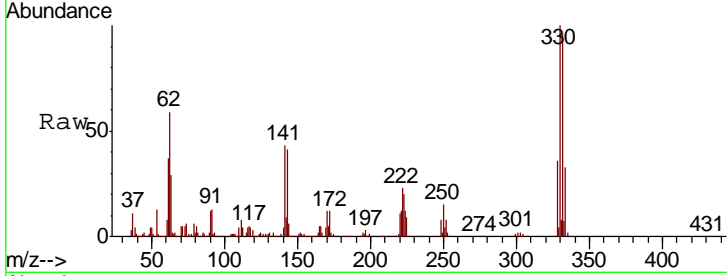
Tgt Ion	Resp	Lower	Upper
198	100		
51	107.8	22.5	62.5#
105	123.9	22.3	62.3#





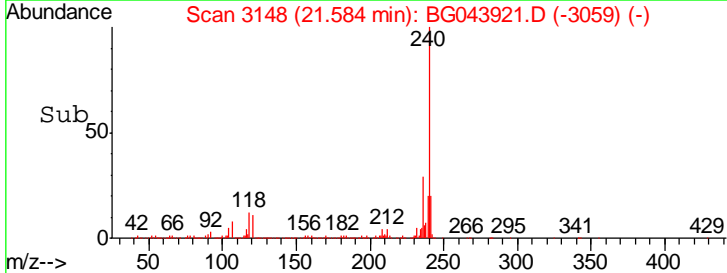
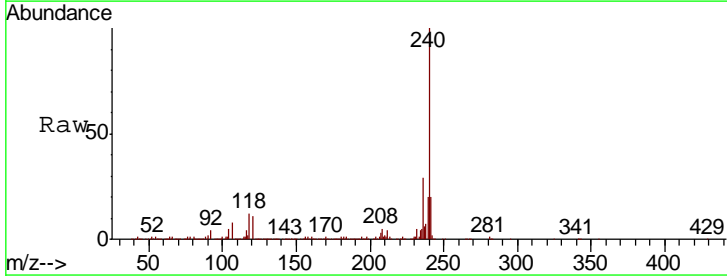
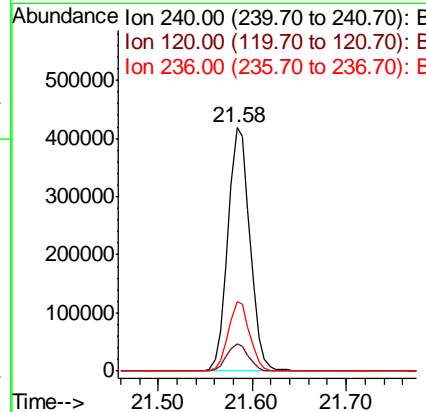
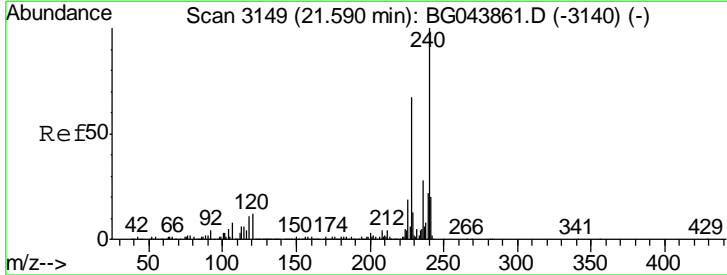
#67  
 4-Bromophenyl-phenylether  
 Concen: 4.699 ng  
 RT: 16.08 min Scan# 2211  
 Delta R.T. -0.45 min  
 Lab File: BG043921.D  
 Acq: 4 Jan 2020 14:11

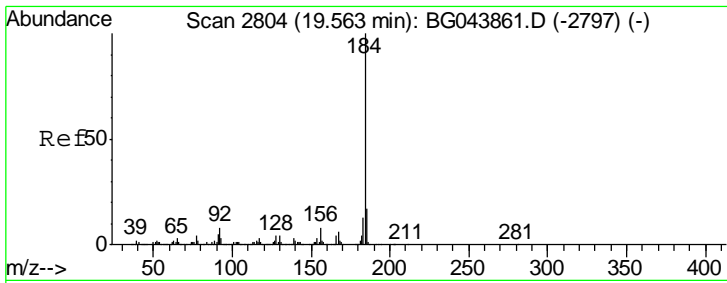
Tgt Ion	Resp	Lower	Upper
248	41211		
250	196.4	78.2	117.2#
141	567.0	59.3	88.9#



#76  
 Chrysene-d12  
 Concen: 20.000 ng  
 RT: 21.58 min Scan# 3148  
 Delta R.T. -0.01 min  
 Lab File: BG043921.D  
 Acq: 4 Jan 2020 14:11

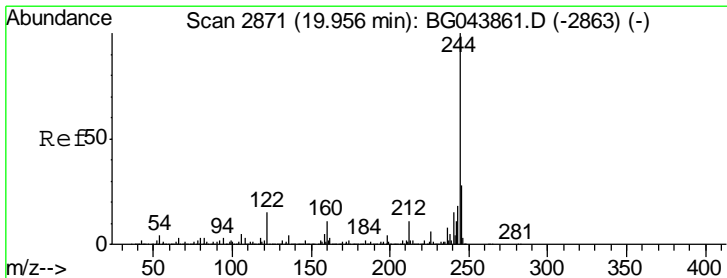
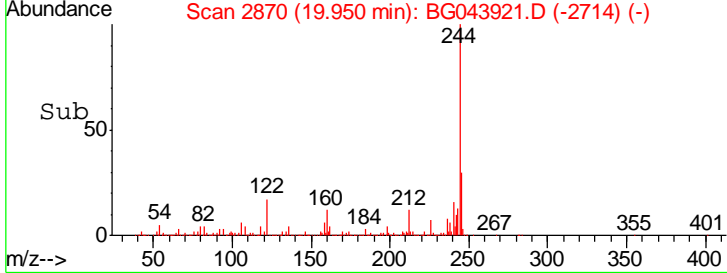
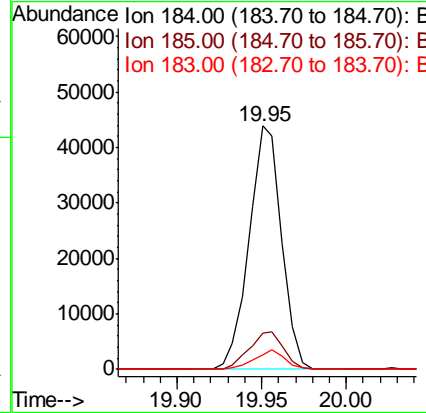
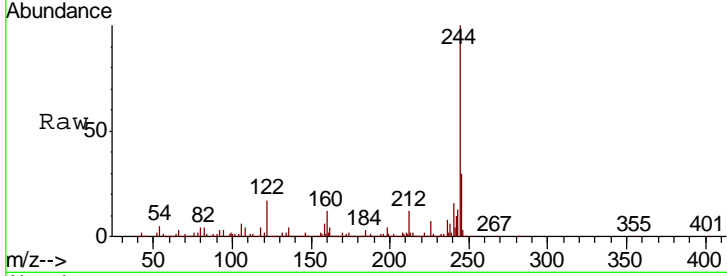
Tgt Ion	Resp	Lower	Upper
240	684848		
120	11.1	9.6	14.4
236	28.7	22.2	33.2





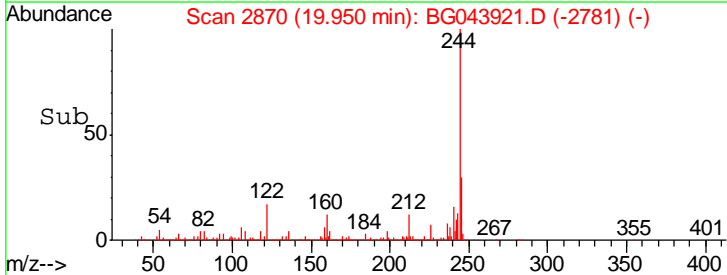
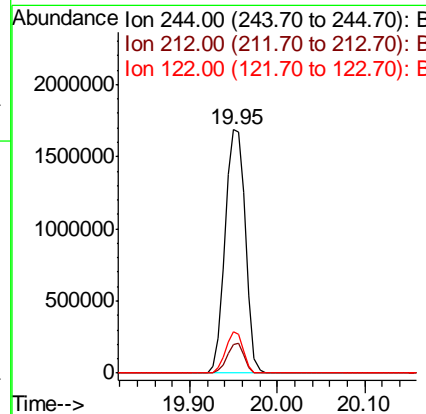
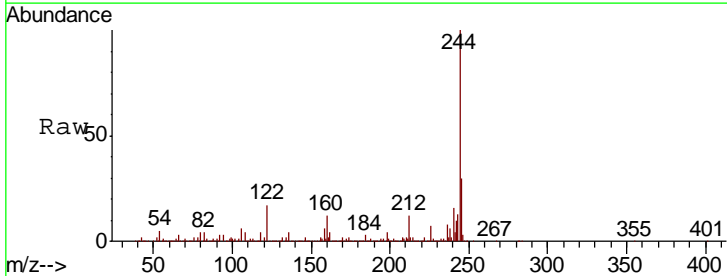
#77  
Benzidine  
Concen: 3.406 ng  
RT: 19.95 min Scan# 2870  
Delta R.T. 0.39 min  
Lab File: BG043921.D  
Acq: 4 Jan 2020 14:11

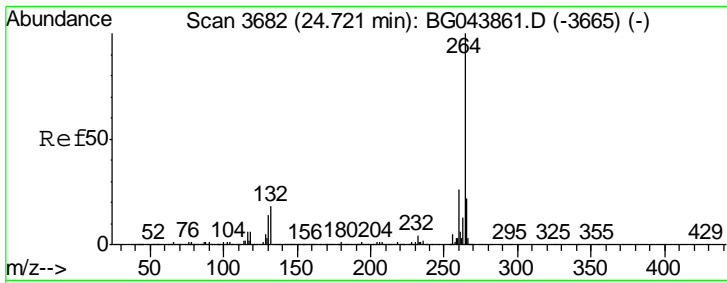
Tgt Ion	Resp	Lower	Upper
184	100		
185	15.0	13.4	20.0
183	5.9	10.6	15.8#



#79  
Terphenyl-d14  
Concen: 100.112 ng  
RT: 19.95 min Scan# 2870  
Delta R.T. -0.01 min  
Lab File: BG043921.D  
Acq: 4 Jan 2020 14:11

Tgt Ion	Resp	Lower	Upper
244	100		
212	11.8	8.6	13.0
122	16.9	11.9	17.9





#87  
 Perylene-d12  
 Concen: 20.000 ng  
 RT: 24.72 min Scan# 3682  
 Delta R.T. 0.00 min  
 Lab File: BG043921.D  
 Acq: 4 Jan 2020 14:11

Tot Ion: 264 Resp: 748268

Ion	Ratio	Lower	Upper
264	100		
260	25.1	20.4	30.6
265	21.3	17.4	26.2

