

Data Path : Z:\HPCHEM1\BNA_G\DATA\BG011516\
 Data File : BG020747.D
 Acq On : 15 Jan 2016 11:27
 Operator : SJ/IZ
 Sample : H1101-07
 Misc :
 ALS Vial : 17 Sample Multiplier: 1

Instrument :
 BNA_G
 ClientSampleID :
 BC9E8

Quant Time: Jan 15 22:16:36 2016
 Quant Method : Z:\HPCHEM1\BNA_G\METHODS\SOM02.2-EPA-BG011216.M
 Quant Title : SVOA CALIBRATION
 QLast Update : Fri Jan 15 22:12:27 2016
 Response via : Initial Calibration

Internal Standards	R.T.	QIon	Response	Conc	Units	Dev(Min)
1) 1,4-Dichlorobenzene-d4	8.04	152	18843	20.00	ng/ul	0.00
18) Naphthalene-d8	10.86	136	83239	20.00	ng/ul	0.00
36) Acenaphthene-d10	14.68	164	57899	20.00	ng/ul	0.00
62) Phenanthrene-d10	17.43	188	148742	20.00	ng/ul	0.00
78) Chrysene-d12	21.70	240	177236	20.00	ng/ul	0.00
86) Perylene-d12	24.95	264	169724	20.00	ng/ul	0.00

System Monitoring Compounds

3) 1,4-Dioxane-d8	3.40	96	936	2.43	ng/uL	0.00
5) Phenol-d5	7.20	99	23144	14.33	ng/ul	0.00
7) Bis-(2-Chloroethyl)ether-d	7.36	67	14824	15.26	ng/ul	0.00
9) 2-Chlorophenol-d4	7.57	132	19667	15.53	ng/ul	0.00
13) 4-Methylphenol-d8	8.75	113	14376	10.55	ng/ul	0.00
19) Nitrobenzene-d5	9.22	128	10254	15.61	ng/ul	0.00
22) 2-Nitrophenol-d4	9.94	143	12006	15.73	ng/ul	0.00
26) 2,4-Dichlorophenol-d3	10.48	165	22115	15.22	ng/ul	0.00
29) 4-Chloroaniline-d4	11.00	131	14379	10.00	ng/ul	0.00
44) Dimethylphthalate-d6	14.08	166	80386	15.91	ng/ul	0.00
47) Acenaphthylene-d8	14.38	160	96643	17.03	ng/ul	0.00
52) 4-Nitrophenol-d4	14.90	143	7957	11.73	ng/ul	0.00
58) Fluorene-d10	15.67	176	76544	16.99	ng/ul	0.00
63) 4,6-Dinitro-2-methylphenol	15.80	200	9696	11.99	ng/ul	0.00
71) Anthracene-d10	17.53	188	120035	16.46	ng/ul	0.00
79) Pyrene-d10	19.81	212	144085	17.09	ng/ul	0.00
90) Benzo(a)pyrene-d12	24.73	264	152238	16.83	ng/ul	0.00

Target Compounds

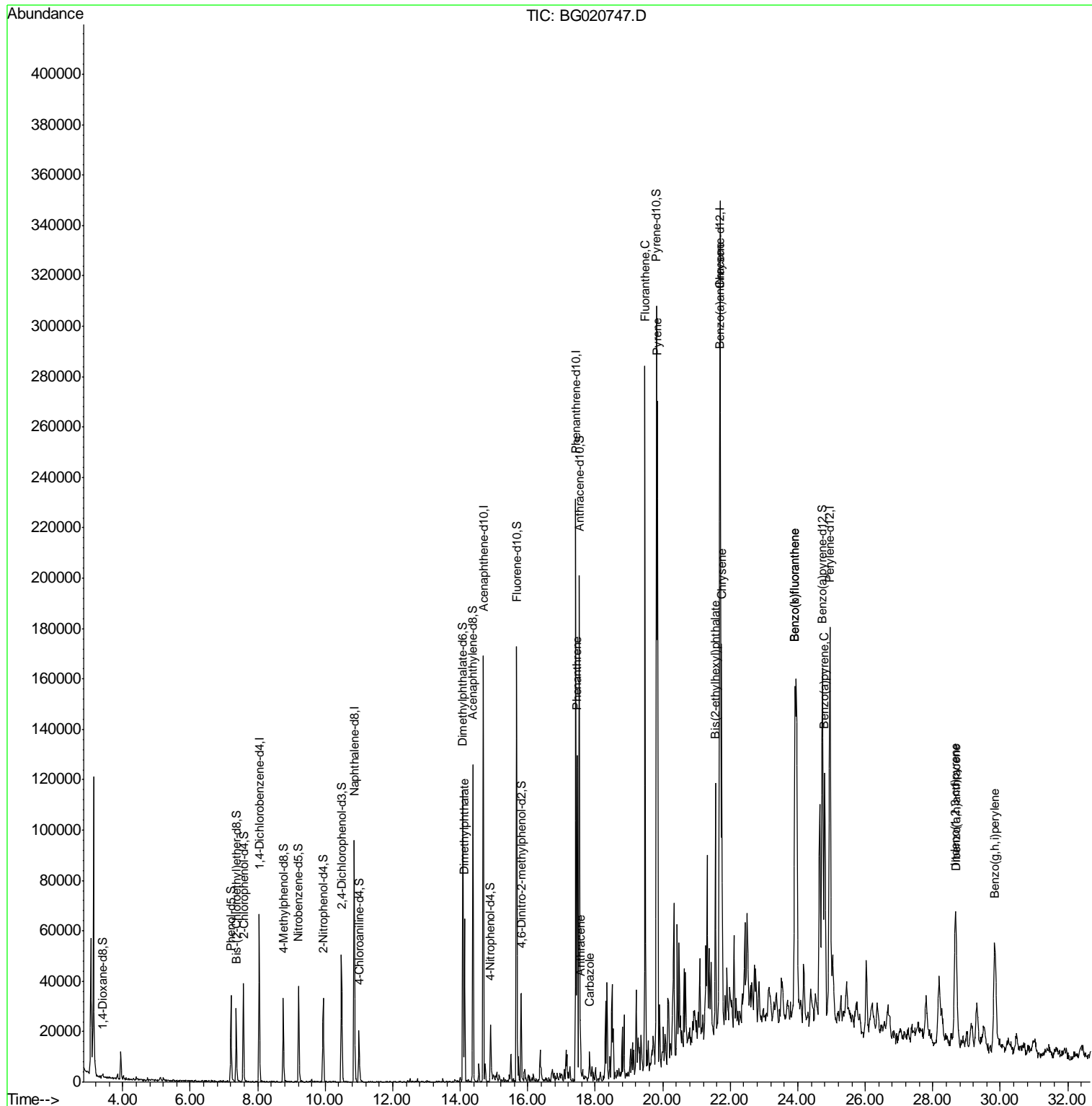
						Qvalue
45) Dimethylphthalate	14.12	163	46062	8.48	ng/ul	98
70) Phenanthrene	17.47	178	83545	9.44	ng/ul	99
72) Anthracene	17.56	178	16862	1.89	ng/ul	100
75) Carbazole	17.84	167	8308	1.13	ng/ul#	93
77) Fluoranthene	19.48	202	179154	16.65	ng/ul	100
80) Pyrene	19.84	202	171101	15.22	ng/ul	99
83) Benzo(a)anthracene	21.68	228	97099	8.78	ng/ul	98
84) Bis(2-ethylhexyl)phthalate	21.56	149	37863	6.80	ng/ul	98
85) Chrysene	21.74	228	120642	11.54	ng/ul	99
88) Benzo(b)fluoranthene	23.92	252	167435	15.31	ng/ul	100
89) Benzo(k)fluoranthene	23.92	252	167435	15.51	ng/ul	99
91) Benzo(a)pyrene	24.80	252	103667	9.85	ng/ul	98
92) Indeno(1,2,3-cd)pyrene	28.67	276	94698	7.63	ng/ul	98
93) Dibenzo(a,h)anthracene	28.70	278	10872	1.06	ng/ul	96
94) Benzo(g,h,i)perylene	29.84	276	92026	8.99	ng/ul	97

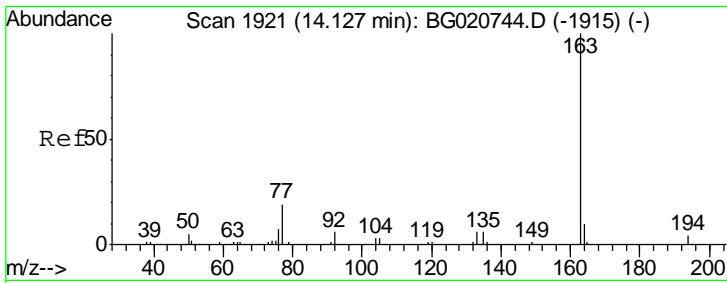
(#) = qualifier out of range (m) = manual integration (+) = signals summed

Data Path : Z:\HPCHEM1\BNA_G\DATA\BG011516\
 Data File : BG020747.D
 Acq On : 15 Jan 2016 11:27
 Operator : SJ/IZ
 Sample : H1101-07
 Misc :
 ALS Vial : 17 Sample Multiplier: 1

Instrument :
 BNA_G
 ClientSampleId :
 BC9E8

Quant Time: Jan 15 22:16:36 2016
 Quant Method : Z:\HPCHEM1\BNA_G\METHODS\SOM02.2-EPA-BG011216.M
 Quant Title : SVOA CALIBRATION
 QLast Update : Fri Jan 15 22:12:27 2016
 Response via : Initial Calibration

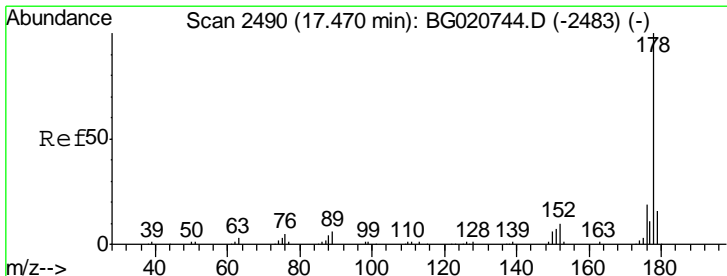
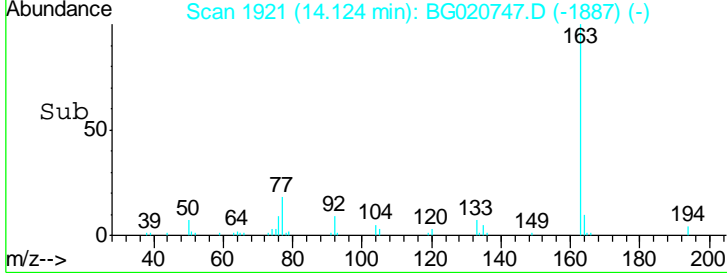
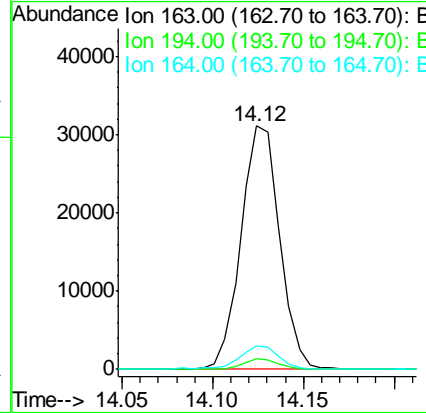
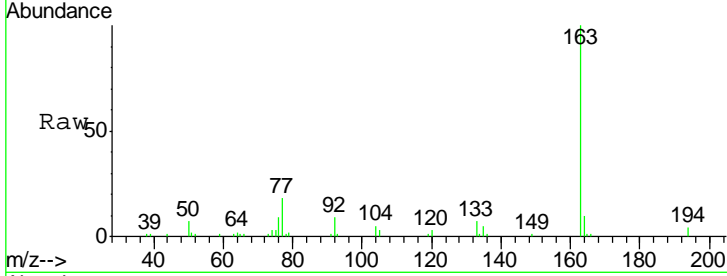




#45
 Dimethylphthalate
 Concen: 8.48 ng/ul
 RT: 14.12 min Scan# 1921
 Delta R.T. -0.00 min
 Lab File: BG020747.D
 Acq: 15 Jan 2016 11:27

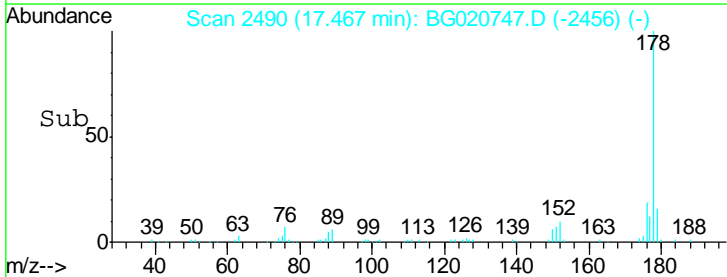
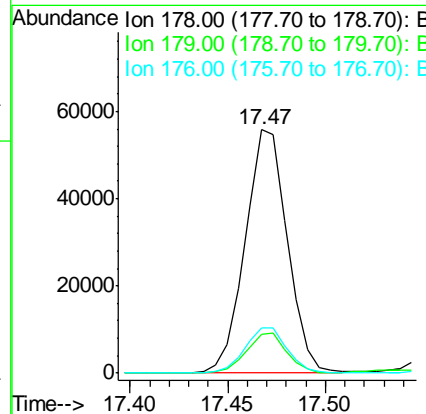
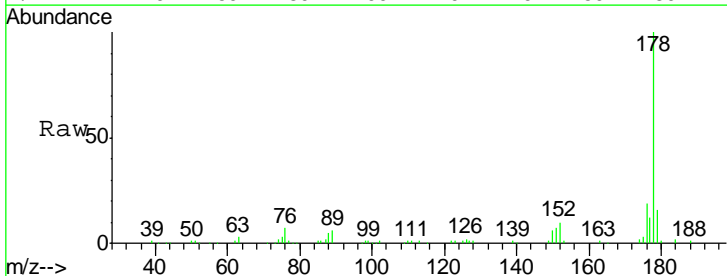
Instrument :
 BNA_G
 ClientSampleID :
 BC9E8

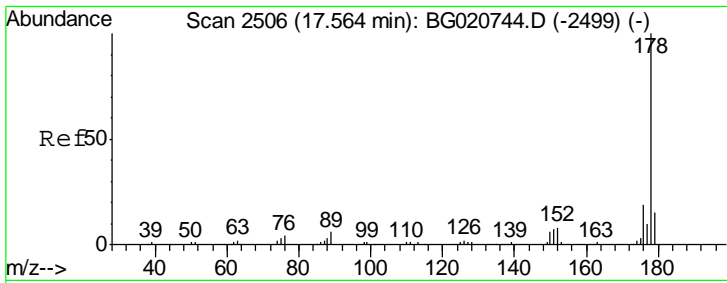
Tgt Ion	Resp	Lower	Upper
163	46062		
194	4.4	4.0	6.0
164	9.9	8.4	12.6



#70
 Phenanthrene
 Concen: 9.44 ng/ul
 RT: 17.47 min Scan# 2490
 Delta R.T. -0.00 min
 Lab File: BG020747.D
 Acq: 15 Jan 2016 11:27

Tgt Ion	Resp	Lower	Upper
178	83545		
179	15.8	12.3	18.5
176	18.7	15.4	23.0



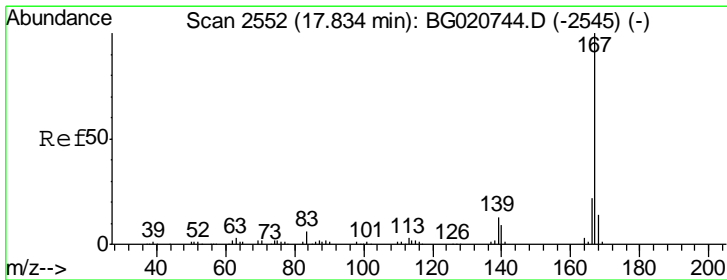
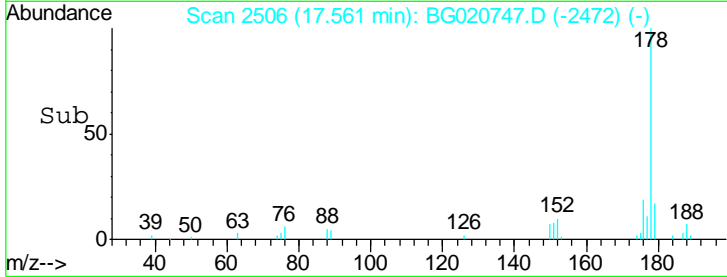
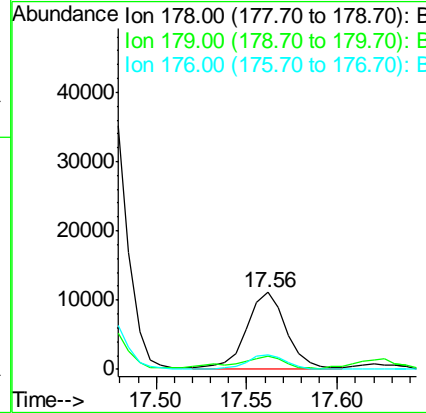
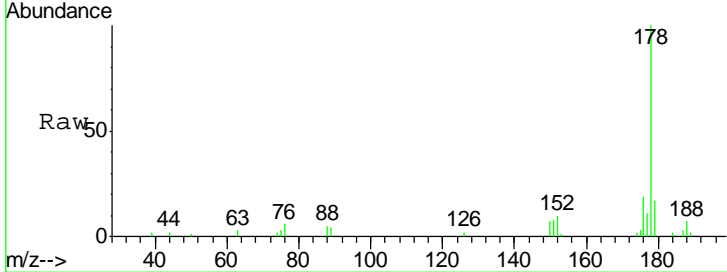


#72
 Anthracene
 Concen: 1.89 ng/ul
 RT: 17.56 min Scan# 2506
 Delta R.T. -0.00 min
 Lab File: BG020747.D
 Acq: 15 Jan 2016 11:27

Instrument :
 BNA_G
 ClientSampled :
 BC9E8

Tgt Ion: 178 Resp: 16862

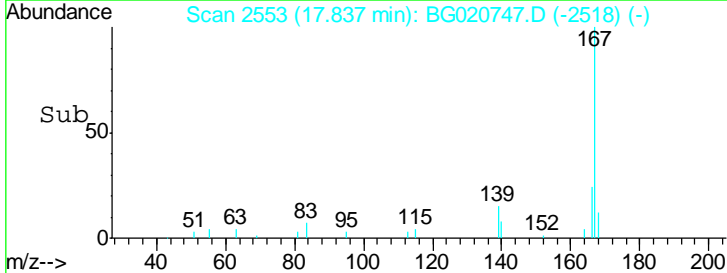
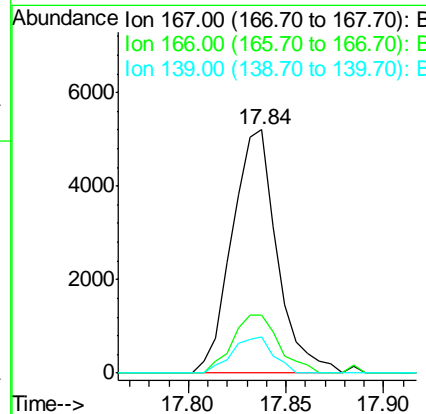
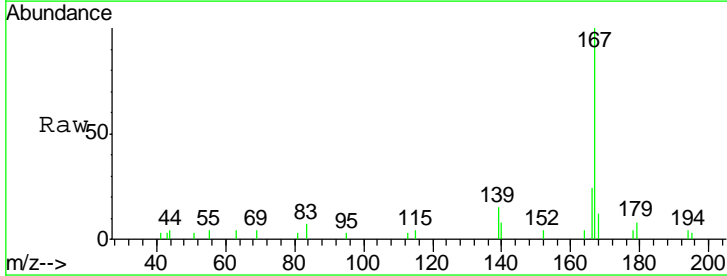
Ion	Ratio	Lower	Upper
178	100		
179	16.8	13.4	20.2
176	19.4	15.4	23.0

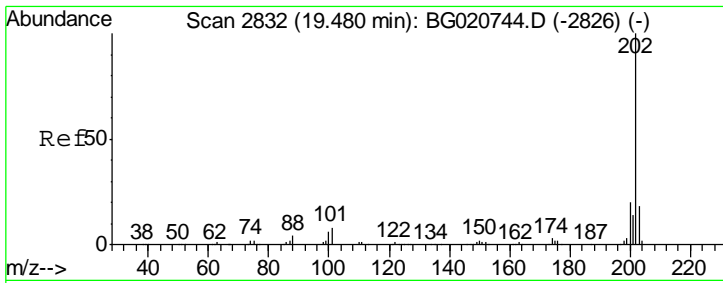


#75
 Carbazole
 Concen: 1.13 ng/ul
 RT: 17.84 min Scan# 2553
 Delta R.T. 0.00 min
 Lab File: BG020747.D
 Acq: 15 Jan 2016 11:27

Tgt Ion: 167 Resp: 8308

Ion	Ratio	Lower	Upper
167	100		
166	23.8	17.0	25.4
139	14.7	9.1	13.7#



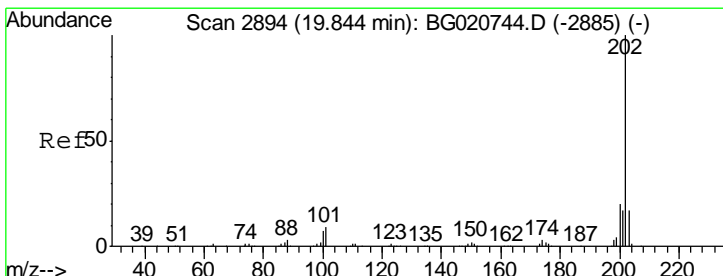
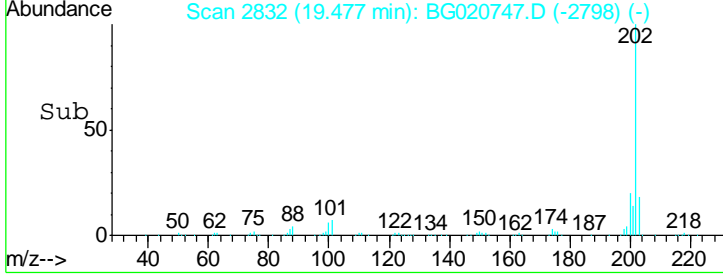
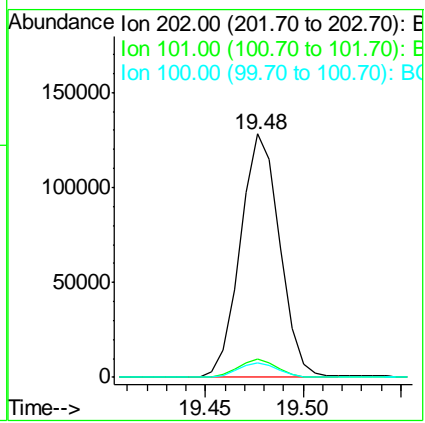
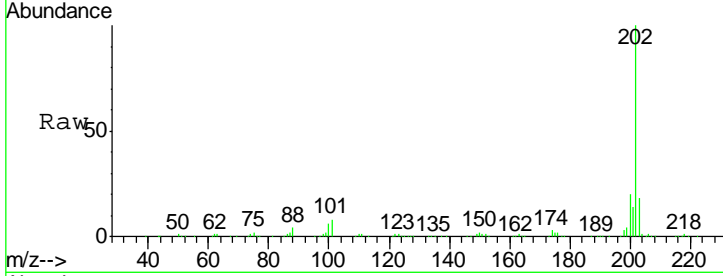


#77
 Fluoranthene
 Concen: 16.65 ng/ul
 RT: 19.48 min Scan# 2832
 Delta R.T. -0.00 min
 Lab File: BG020747.D
 Acq: 15 Jan 2016 11:27

Instrument :
 BNA_G
 ClientSampled :
 BC9E8

Tgt Ion: 202 Resp: 179154

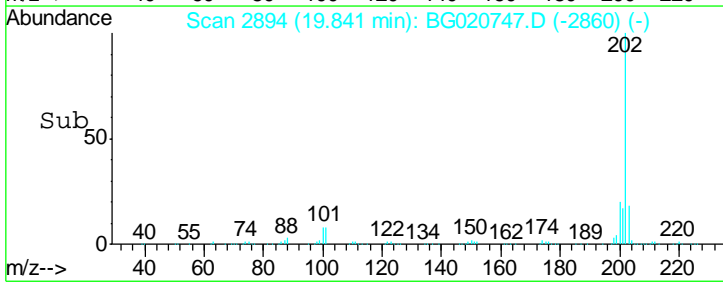
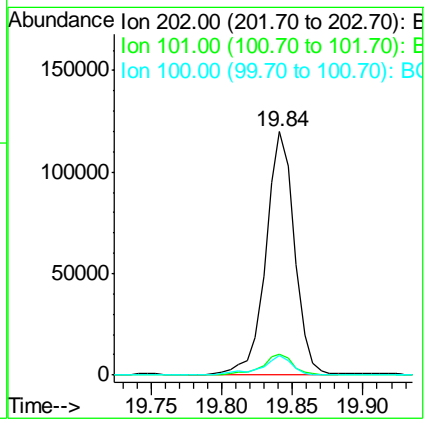
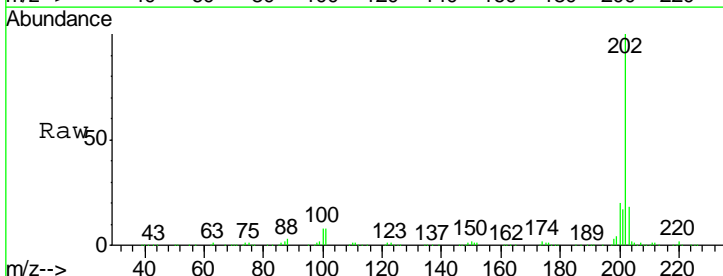
Ion	Ratio	Lower	Upper
202	100		
101	7.6	6.1	9.1
100	5.9	4.6	7.0

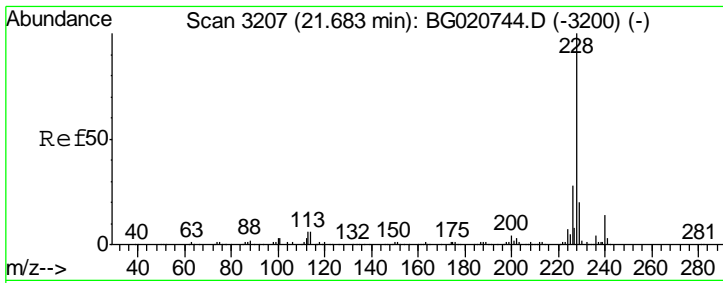


#80
 Pyrene
 Concen: 15.22 ng/ul
 RT: 19.84 min Scan# 2894
 Delta R.T. -0.00 min
 Lab File: BG020747.D
 Acq: 15 Jan 2016 11:27

Tgt Ion: 202 Resp: 171101

Ion	Ratio	Lower	Upper
202	100		
101	8.3	6.9	10.3
100	7.8	5.6	8.4

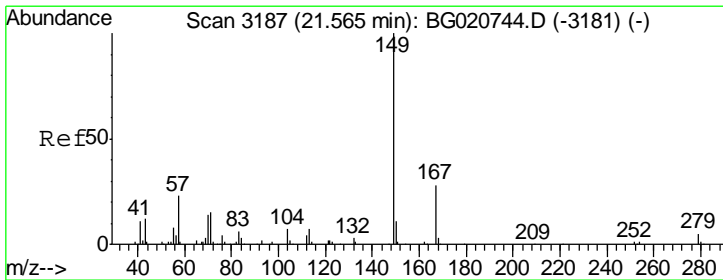
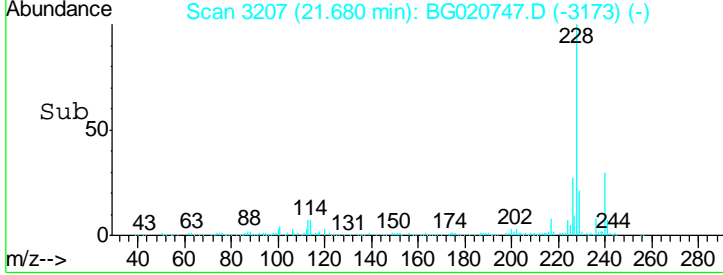
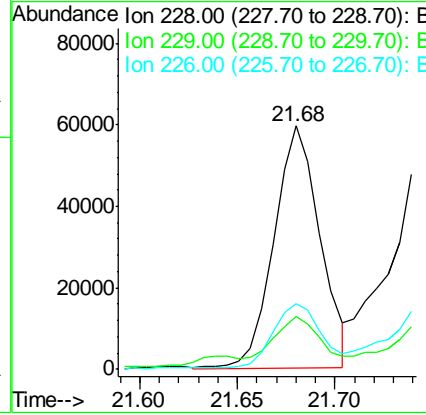
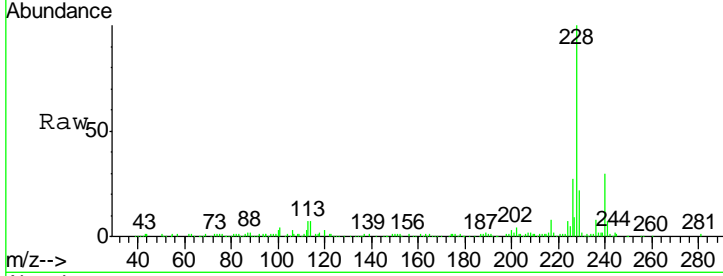




#83
 Benzo(a)anthracene
 Concen: 8.78 ng/ul
 RT: 21.68 min Scan# 3207
 Delta R.T. -0.00 min
 Lab File: BG020747.D
 Acq: 15 Jan 2016 11:27

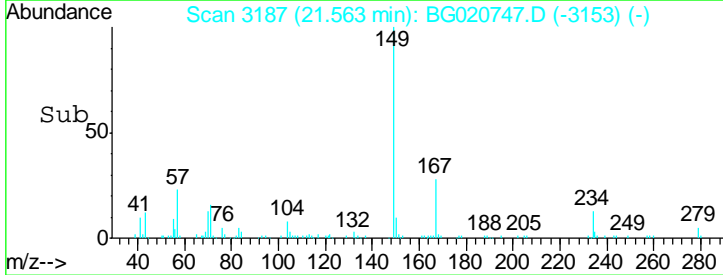
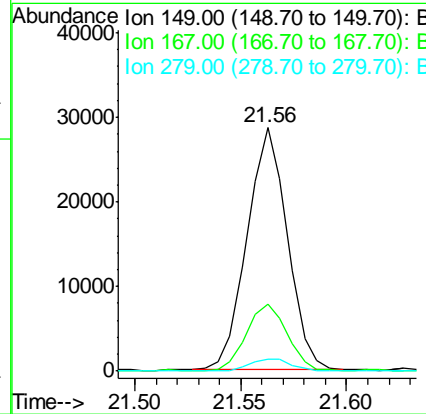
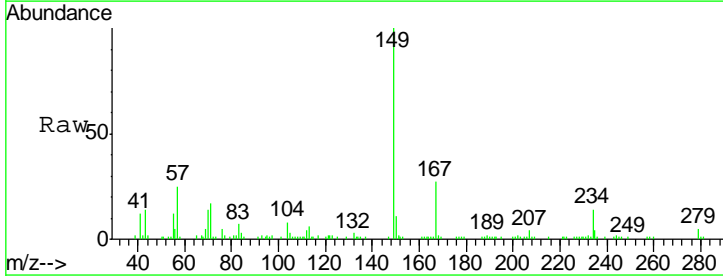
Instrument :
 BNA_G
 ClientSampled :
 BC9E8

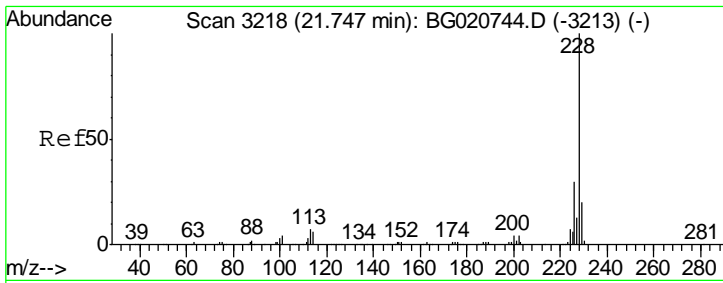
Tgt Ion	Resp	Lower	Upper
228	100		
229	21.8	16.0	24.0
226	27.2	21.8	32.8



#84
 Bis(2-ethylhexyl)phthalate
 Concen: 6.80 ng/ul
 RT: 21.56 min Scan# 3187
 Delta R.T. -0.00 min
 Lab File: BG020747.D
 Acq: 15 Jan 2016 11:27

Tgt Ion	Resp	Lower	Upper
149	100		
167	27.5	23.0	34.6
279	5.0	4.3	6.5

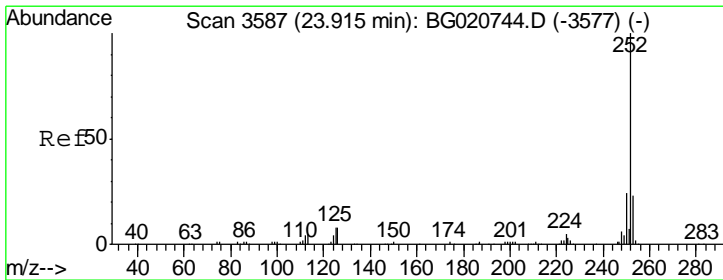
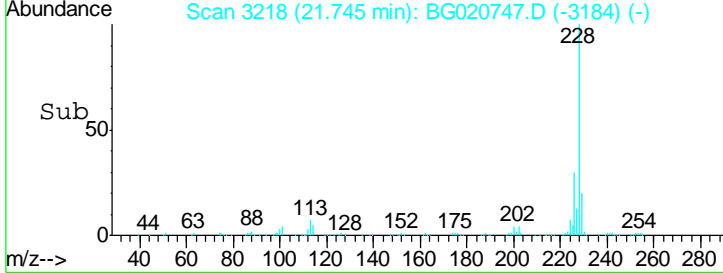
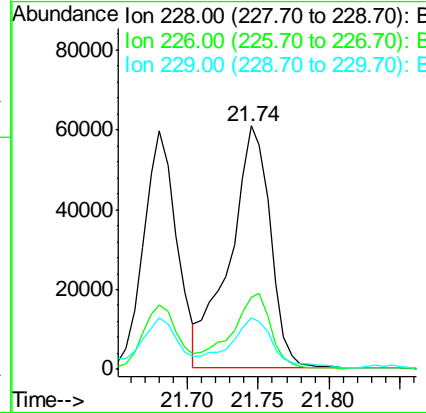
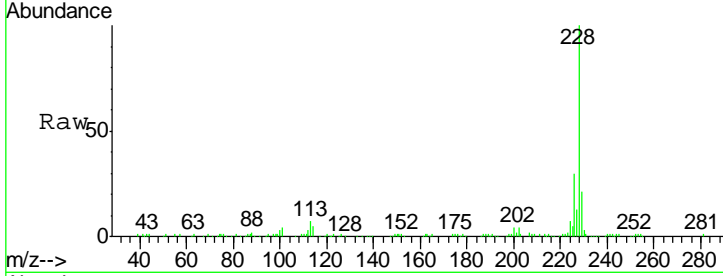




#85
 Chrysene
 Concen: 11.54 ng/ul
 RT: 21.74 min Scan# 3218
 Delta R.T. -0.00 min
 Lab File: BG020747.D
 Acq: 15 Jan 2016 11:27

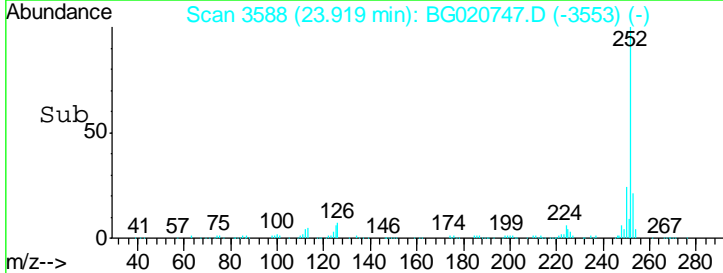
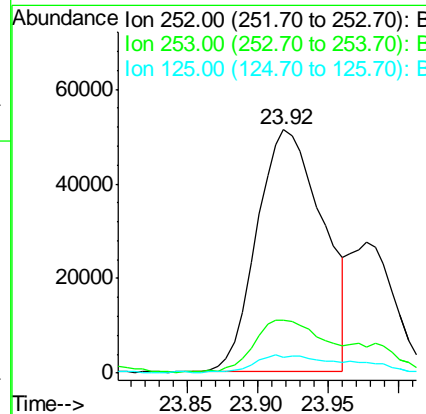
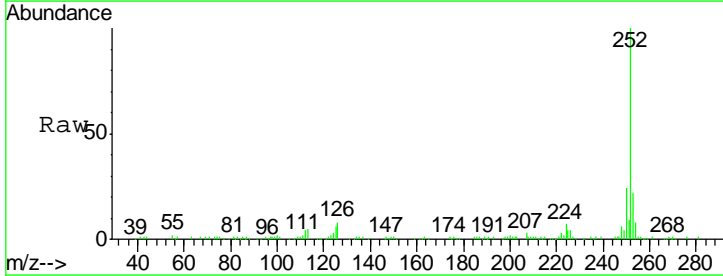
Instrument :
 BNA_G
 ClientSampled :
 BC9E8

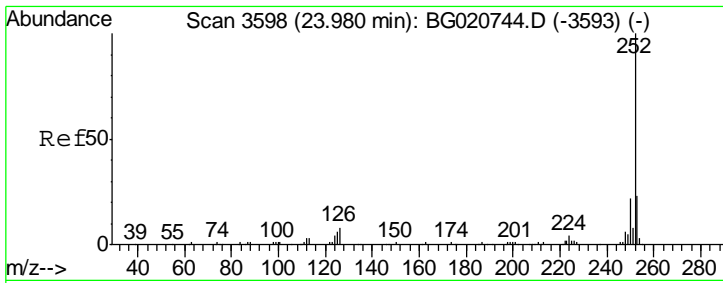
Tgt Ion	Resp	Lower	Upper
228	120642		
226	29.7	24.1	36.1
229	21.1	16.0	24.0



#88
 Benzo(b)fluoranthene
 Concen: 15.31 ng/ul
 RT: 23.92 min Scan# 3588
 Delta R.T. 0.00 min
 Lab File: BG020747.D
 Acq: 15 Jan 2016 11:27

Tgt Ion	Resp	Lower	Upper
252	167435		
253	21.8	17.4	26.0
125	6.2	4.9	7.3

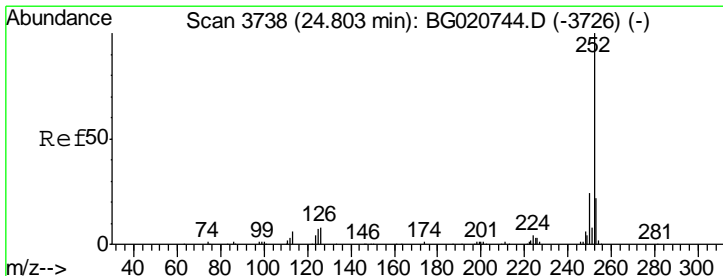
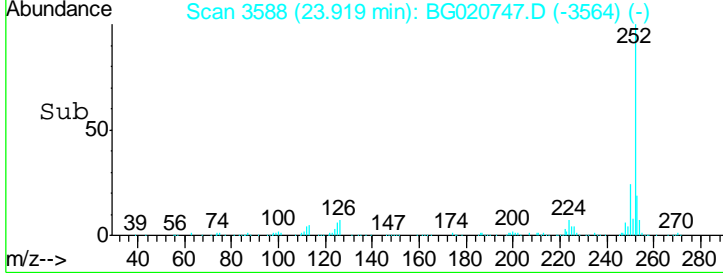
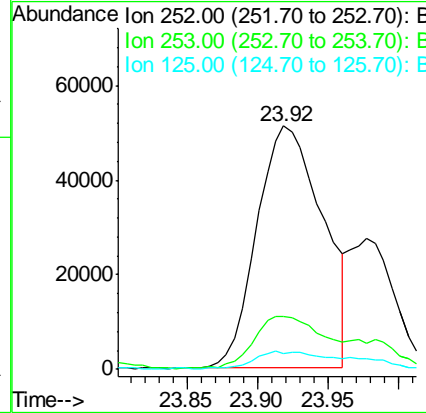
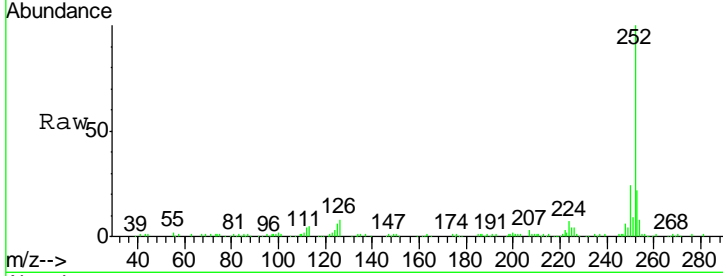




#89
 Benzo(k)fluoranthene
 Concen: 15.51 ng/ul
 RT: 23.92 min Scan# 3588
 Delta R.T. -0.06 min
 Lab File: BG020747.D
 Acq: 15 Jan 2016 11:27

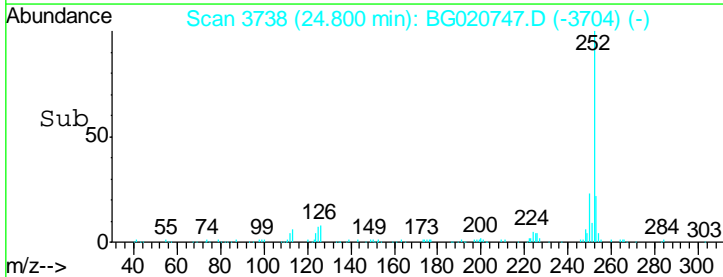
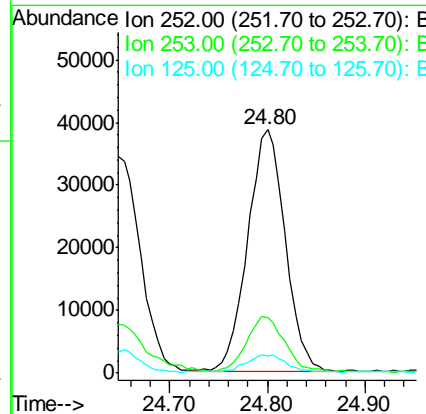
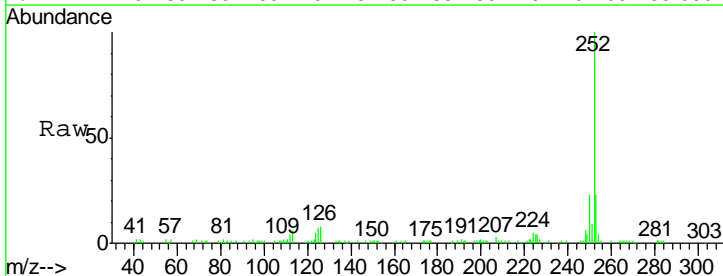
Instrument :
 BNA_G
 ClientSampled :
 BC9E8

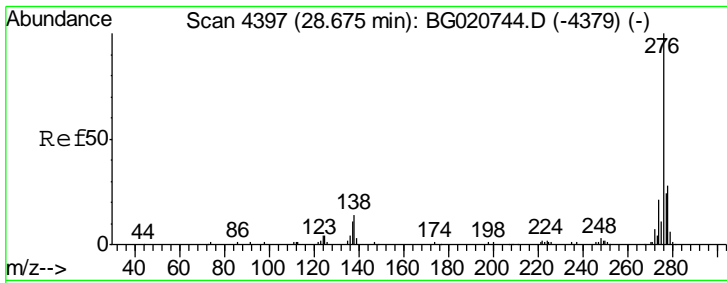
Tgt Ion	Resp	Lower	Upper
252	167435		
253	21.8	17.1	25.7
125	6.2	5.4	8.0



#91
 Benzo(a)pyrene
 Concen: 9.85 ng/ul
 RT: 24.80 min Scan# 3738
 Delta R.T. -0.00 min
 Lab File: BG020747.D
 Acq: 15 Jan 2016 11:27

Tgt Ion	Resp	Lower	Upper
252	103667		
253	23.0	17.2	25.8
125	7.3	5.8	8.6

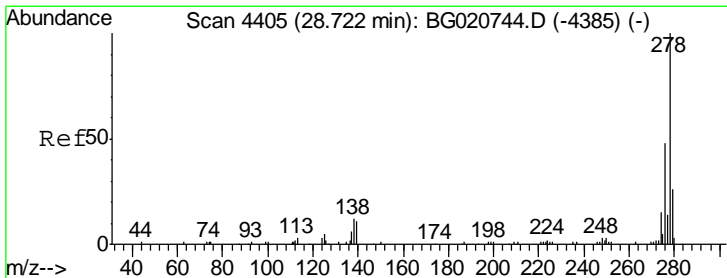
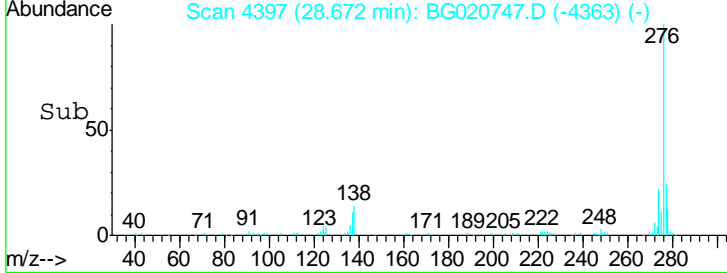
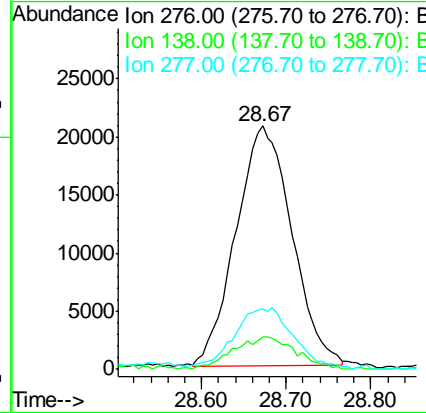
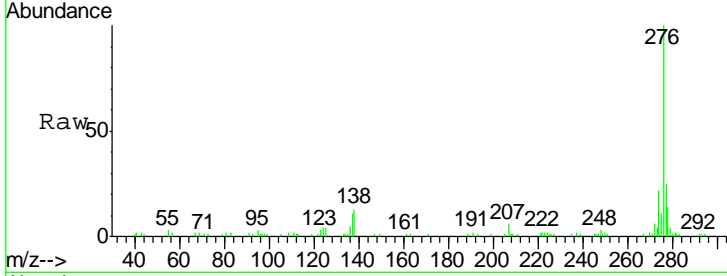




#92
 Indeno(1,2,3-cd)pyrene
 Concen: 7.63 ng/ul
 RT: 28.67 min Scan# 4397
 Delta R.T. -0.00 min
 Lab File: BG020747.D
 Acq: 15 Jan 2016 11:27

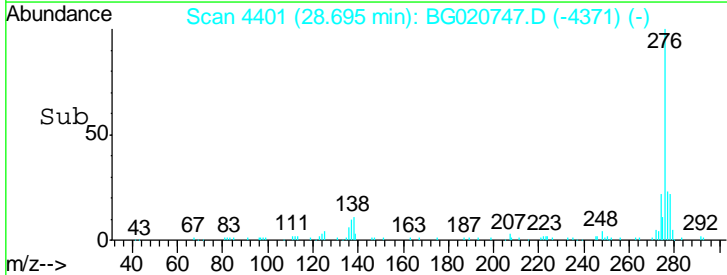
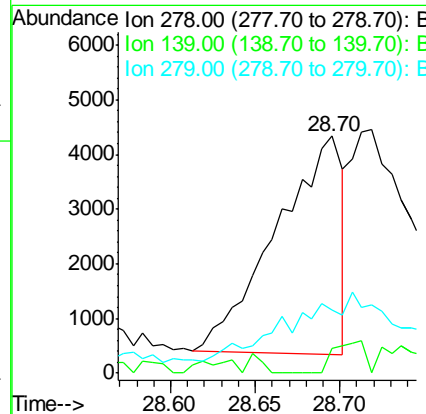
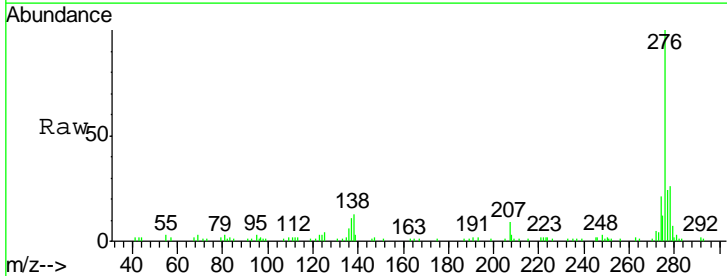
Instrument :
 BNA_G
 ClientSampled :
 BC9E8

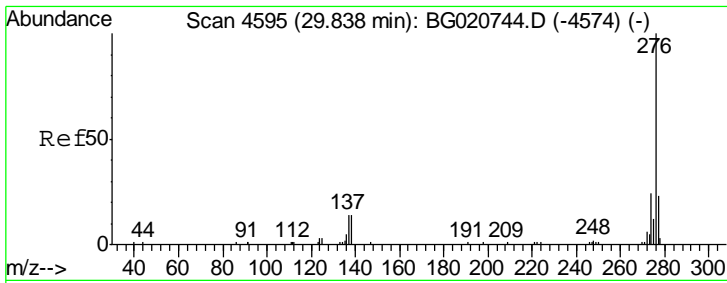
Tgt Ion	Resp	Lower	Upper
276	100		
138	13.3	10.9	16.3
277	25.1	18.9	28.3



#93
 Dibenzo(a,h)anthracene
 Concen: 1.06 ng/ul
 RT: 28.70 min Scan# 4401
 Delta R.T. -0.03 min
 Lab File: BG020747.D
 Acq: 15 Jan 2016 11:27

Tgt Ion	Resp	Lower	Upper
278	100		
139	10.5	9.0	13.4
279	26.7	19.1	28.7





#94
 Benzo(g,h,i)perylene
 Concen: 8.99 ng/ul
 RT: 29.84 min Scan# 4595
 Delta R.T. -0.00 min
 Lab File: BG020747.D
 Acq: 15 Jan 2016 11:27

Instrument :
 BNA_G
 ClientSampleId :
 BC9E8

Tgt Ion	Resp	Lower	Upper
276	92026		
138	12.0	11.2	16.8
277	23.0	19.0	28.6

