

Data Path : U:\HPCHEM1\BNA G\DATA\BG011518\
 Data File : BG032039.D
 Acq On : 15 Jan 2018 19:29
 Operator : SJ/JU
 Sample : J1109-01
 Misc :
 ALS Vial : 7 Sample Multiplier: 1

Instrument :
 BNA_G
 ClientSampleId :

Quant Time: Jan 16 01:30:37 2018
 Quant Method : Z:\HPCHEM1\BNA G\METHODS\8270-BG011218.M
 Quant Title : ASP BNA STANDARDS FOR 5 POINT CALIBRATION
 QLast Update : Mon Jan 15 10:05:15 2018
 Response via : Initial Calibration

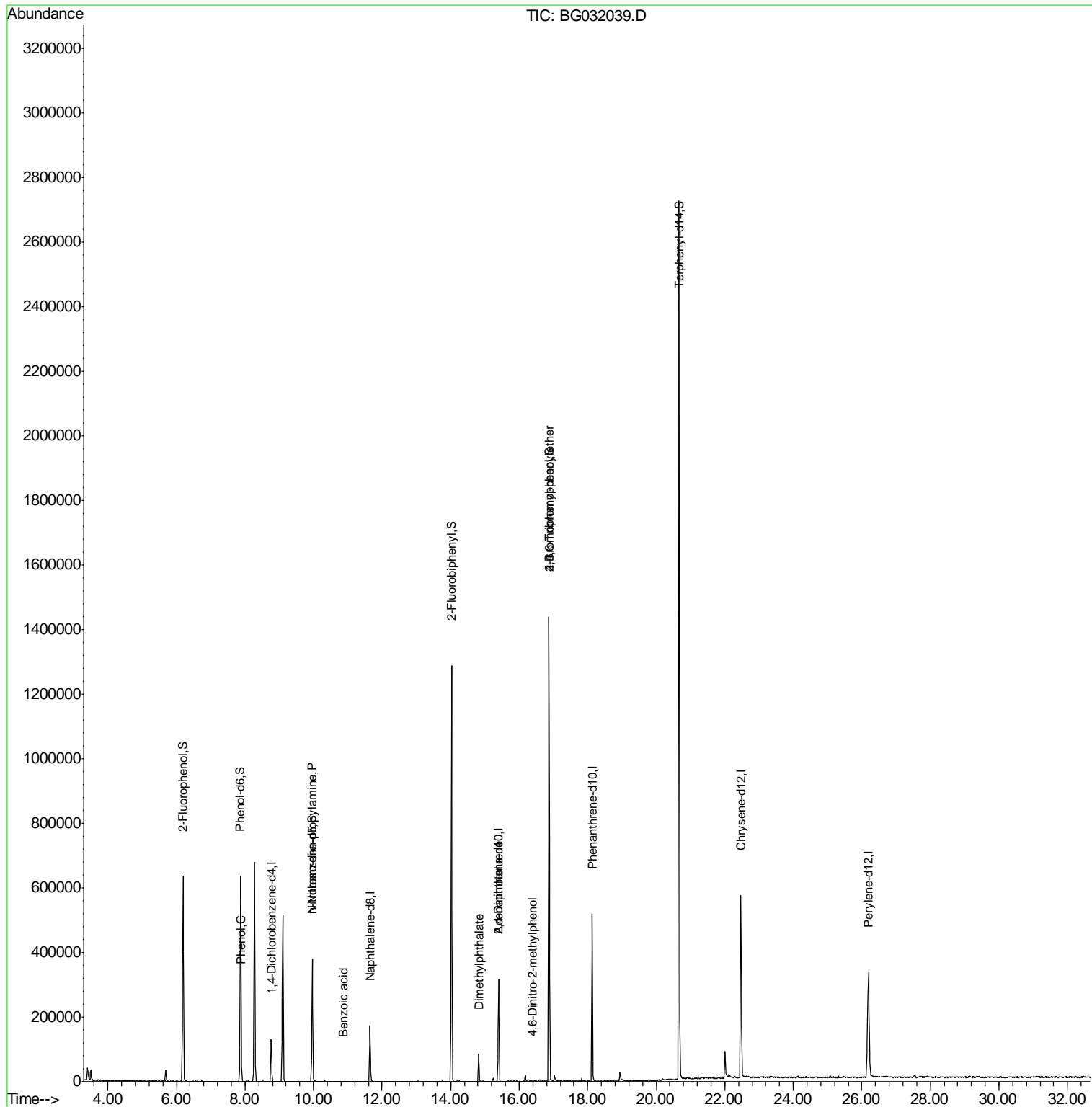
| Internal Standards | R.T. | QIon | Response | Conc | Units | Dev(Min) |
|--------------------------------|-------|------|----------|--------|-------|----------|
| 1) 1,4-Dichlorobenzene-d4 | 8.76 | 152 | 43191 | 20.00 | ng | -0.01 |
| 21) Naphthalene-d8 | 11.65 | 136 | 173944 | 20.00 | ng | -0.01 |
| 38) Acenaphthene-d10 | 15.40 | 164 | 122457 | 20.00 | ng | 0.00 |
| 63) Phenanthrene-d10 | 18.13 | 188 | 350199 | 20.00 | ng | -0.01 |
| 75) Chrysene-d12 | 22.47 | 240 | 448037 | 20.00 | ng | -0.02 |
| 86) Perylene-d12 | 26.19 | 264 | 470159 | 20.00 | ng | -0.02 |
| System Monitoring Compounds | | | | | | |
| 5) 2-Fluorophenol | 6.19 | 112 | 330036 | 139.75 | ng | 0.00 |
| 7) Phenol-d6 | 7.87 | 99 | 416969 | 140.19 | ng | 0.00 |
| 23) Nitrobenzene-d5 | 9.96 | 82 | 243372 | 94.66 | ng | -0.01 |
| 41) 2,4,6-Tribromophenol | 16.87 | 330 | 320061 | 157.95 | ng | 0.00 |
| 44) 2-Fluorobiphenyl | 14.03 | 172 | 762665 | 77.22 | ng | 0.00 |
| 78) Terphenyl-d14 | 20.67 | 244 | 1536184 | 75.71 | ng | 0.00 |
| Target Compounds | | | | | | |
| 10) Phenol | 7.90 | 94 | 9620 | 3.283 | ng | # 72 |
| 19) n-Nitroso-di-n-propylamine | 9.96 | 70 | 33733 | 18.280 | ng | # 70 |
| 32) Benzoic acid | 10.88 | 122 | 59 | 5.283 | ng | # 1 |
| 49) Dimethylphthalate | 14.82 | 163 | 62669 | 5.848 | ng | 98 |
| 56) 2,4-Dinitrotoluene | 15.40 | 165 | 16135 | 5.388 | ng | # 16 |
| 64) 4,6-Dinitro-2-methylphenol | 16.39 | 198 | 56 | 4.907 | ng | # 29 |
| 66) 4-Bromophenyl-phenylether | 16.87 | 248 | 26477 | 5.314 | ng | # 1 |

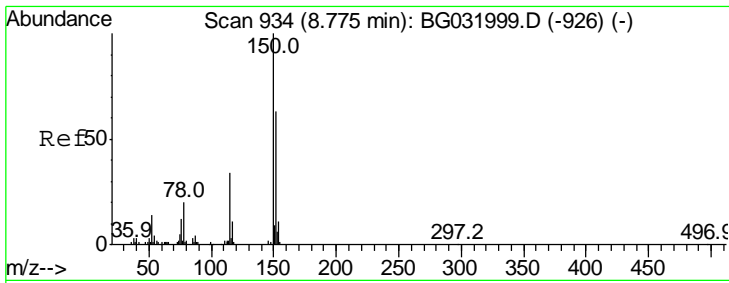
(#) = qualifier out of range (m) = manual integration (+) = signals summed

Data Path : U:\HPCHEM1\BNA G\DATA\BG011518\
 Data File : BG032039.D
 Acq On : 15 Jan 2018 19:29
 Operator : SJ/JU
 Sample : J1109-01
 Misc :
 ALS Vial : 7 Sample Multiplier: 1

Instrument :
 BNA_G
 ClientSampleId :

Quant Time: Jan 16 01:30:37 2018
 Quant Method : Z:\HPCHEM1\BNA G\METHODS\8270-BG011218.M
 Quant Title : ASP BNA STANDARDS FOR 5 POINT CALIBRATION
 QLast Update : Mon Jan 15 10:05:15 2018
 Response via : Initial Calibration

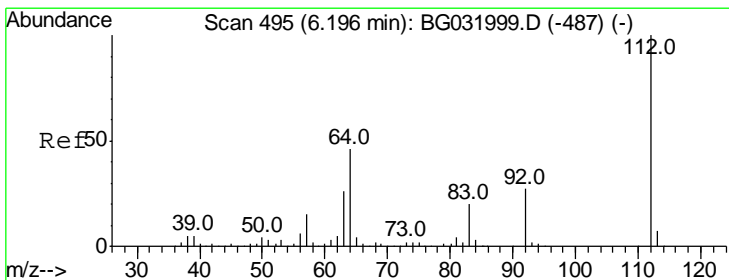
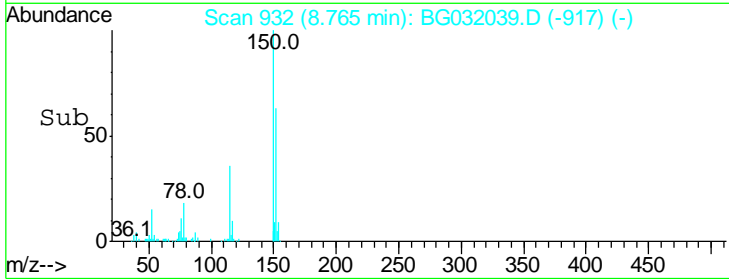
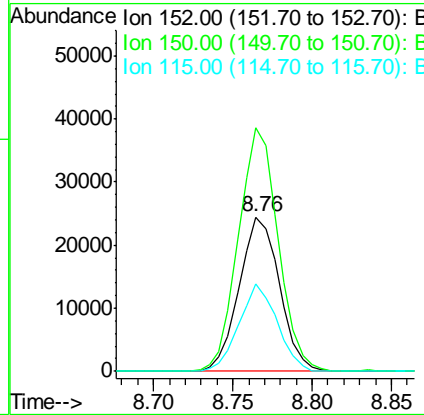
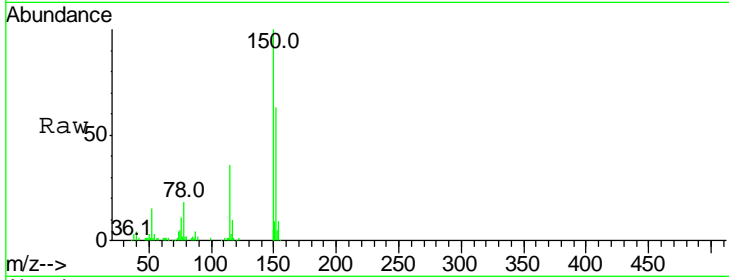




#1
 1,4-Dichlorobenzene-d4
 Concen: 20.000 ng
 RT: 8.76 min Scan# 932
 Delta R.T. -0.01 min
 Lab File: BG032039.D
 Acq: 15 Jan 2018 19:29

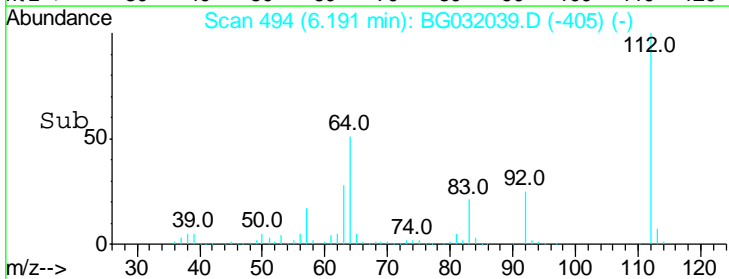
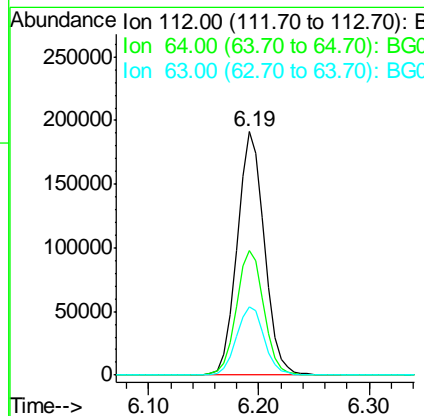
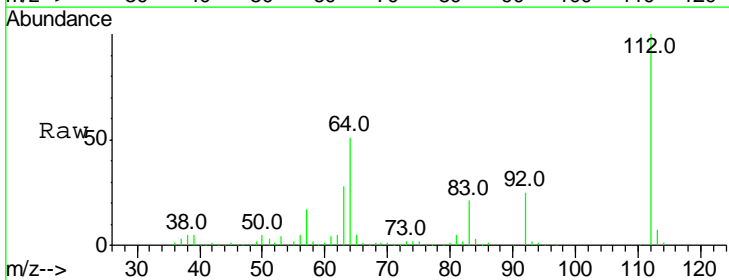
Instrument :
 BNA_G
 ClientSampled :

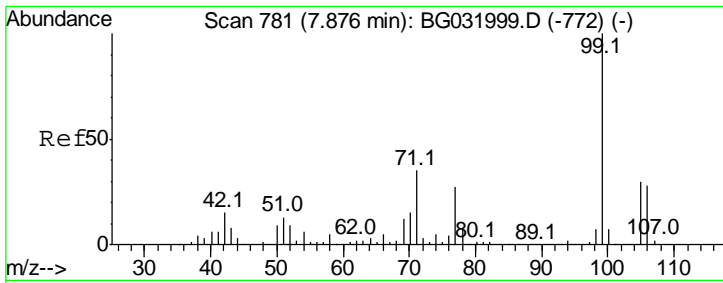
| Tgt Ion | Resp | Lower | Upper |
|---------|-------|-------|-------|
| 152 | 100 | | |
| 150 | 158.0 | 126.6 | 189.8 |
| 115 | 56.4 | 53.0 | 79.4 |



#5
 2-Fluorophenol
 Concen: 139.755 ng
 RT: 6.19 min Scan# 494
 Delta R.T. -0.00 min
 Lab File: BG032039.D
 Acq: 15 Jan 2018 19:29

| Tgt Ion | Resp | Lower | Upper |
|---------|------|-------|-------|
| 112 | 100 | | |
| 64 | 51.3 | 56.3 | 84.5# |
| 63 | 28.1 | 30.1 | 45.1# |

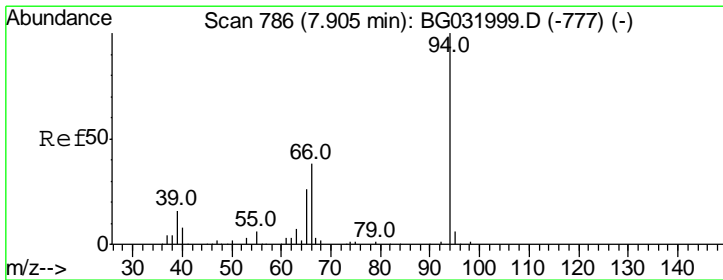
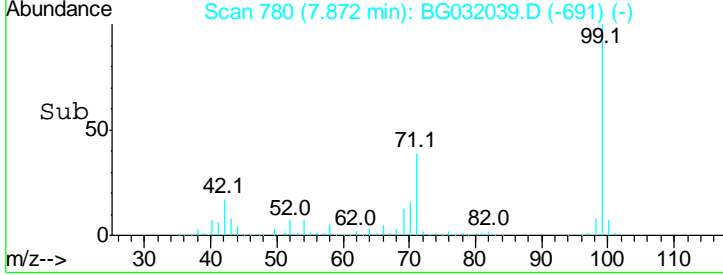
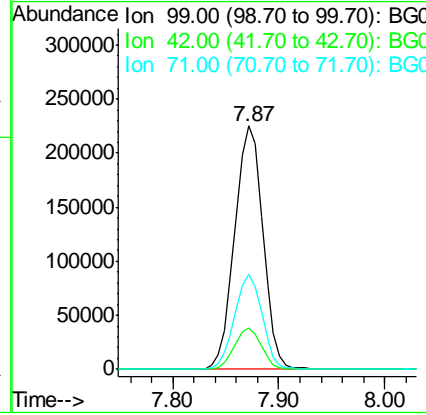
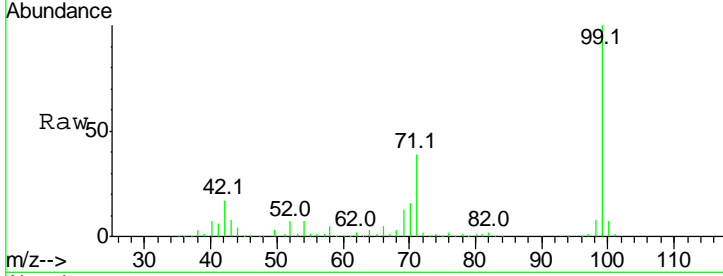




#7
 Phenol-d6
 Concen: 140.195 ng
 RT: 7.87 min Scan# 780
 Delta R.T. -0.00 min
 Lab File: BG032039.D
 Acq: 15 Jan 2018 19:29

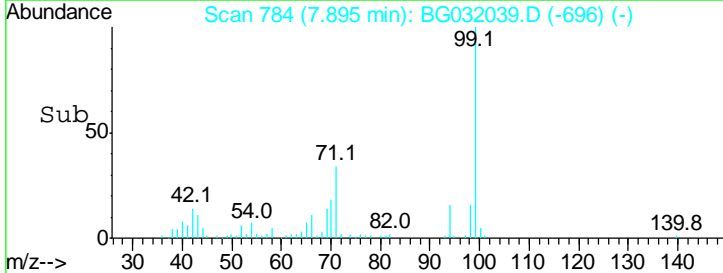
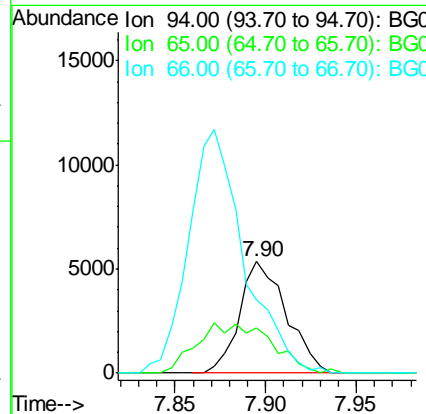
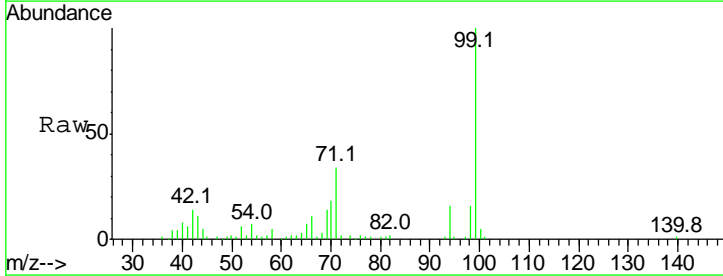
Instrument :
 BNA_G
 ClientSampled :

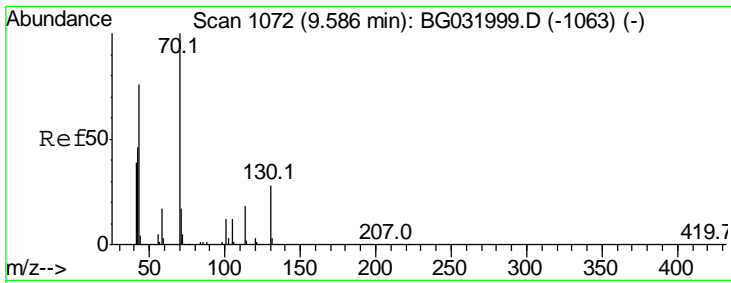
| Tgt Ion | Resp | Lower | Upper |
|---------|--------|-------|-------|
| 99 | 416969 | | |
| 99 | 100 | | |
| 42 | 17.2 | 14.1 | 21.1 |
| 71 | 39.0 | 26.1 | 39.1 |



#10
 Phenol
 Concen: 3.283 ng
 RT: 7.90 min Scan# 784
 Delta R.T. -0.01 min
 Lab File: BG032039.D
 Acq: 15 Jan 2018 19:29

| Tgt Ion | Resp | Lower | Upper |
|---------|------|-------|-------|
| 94 | 9620 | | |
| 94 | 100 | | |
| 65 | 40.5 | 11.9 | 51.9 |
| 66 | 65.7 | 22.2 | 62.2# |

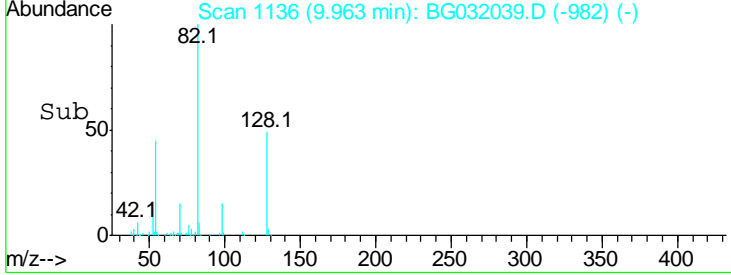
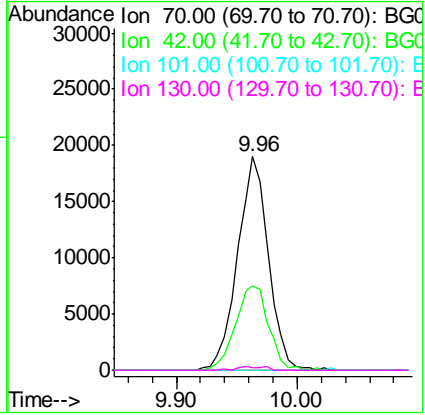
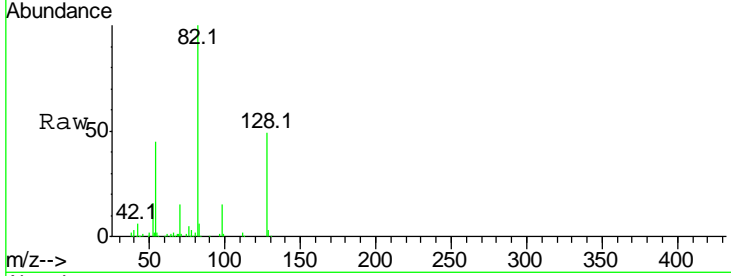




#19
 n-Nitroso-di-n-propylamine
 Concen: 18.280 ng
 RT: 9.96 min Scan# 1136
 Delta R.T. 0.38 min
 Lab File: BG032039.D
 Acq: 15 Jan 2018 19:29

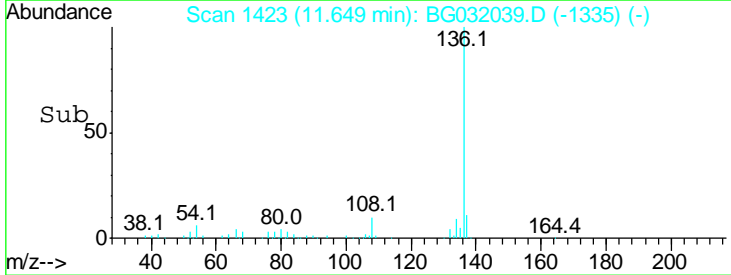
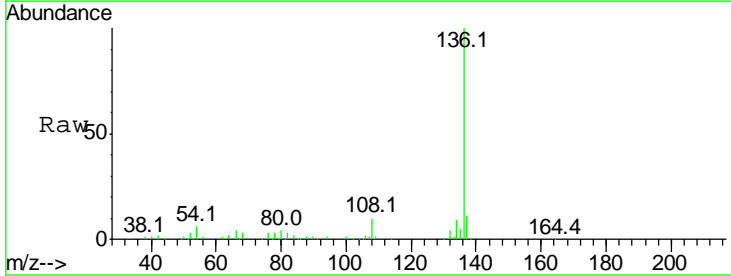
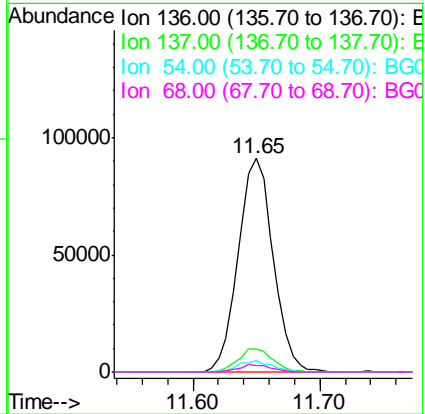
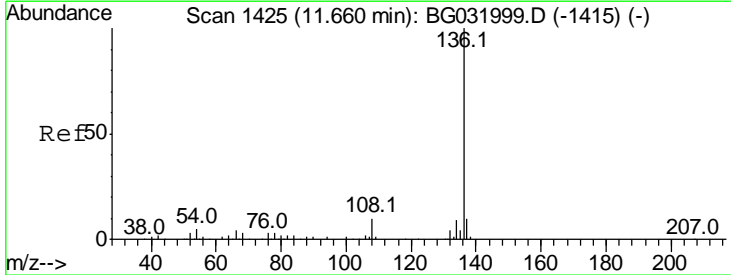
Instrument :
 BNA_G
 ClientSampled :

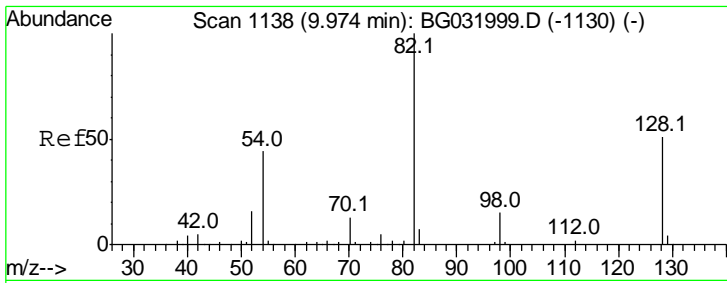
| Tgt Ion | Resp | Lower | Upper |
|---------|------|-------|-------|
| 70 | 100 | | |
| 42 | 39.4 | 49.1 | 73.7# |
| 101 | 0.0 | 8.5 | 12.7# |
| 130 | 1.5 | 13.4 | 20.0# |



#21
 Naphthalene-d8
 Concen: 20.000 ng
 RT: 11.65 min Scan# 1423
 Delta R.T. -0.01 min
 Lab File: BG032039.D
 Acq: 15 Jan 2018 19:29

| Tgt Ion | Resp | Lower | Upper |
|---------|------|-------|-------|
| 136 | 100 | | |
| 137 | 10.6 | 9.2 | 13.8 |
| 54 | 5.6 | 10.3 | 15.5# |
| 68 | 3.3 | 4.5 | 6.7# |

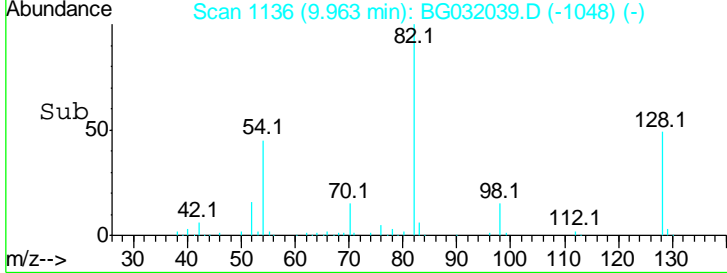
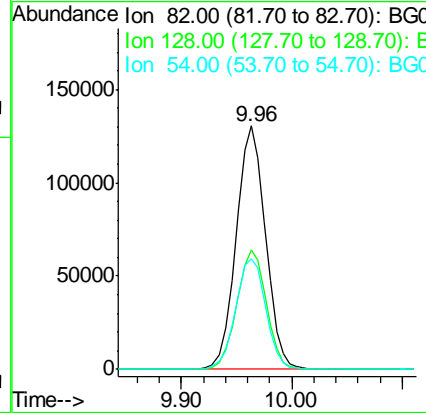
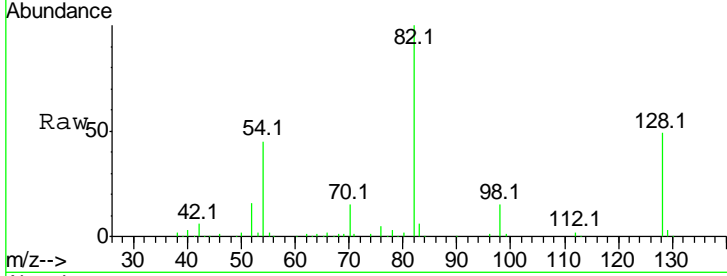




#23
 Nitrobenzene-d5
 Concen: 94.658 ng
 RT: 9.96 min Scan# 1136
 Delta R.T. -0.01 min
 Lab File: BG032039.D
 Acq: 15 Jan 2018 19:29

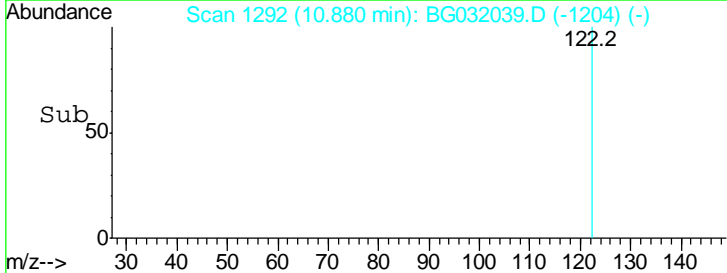
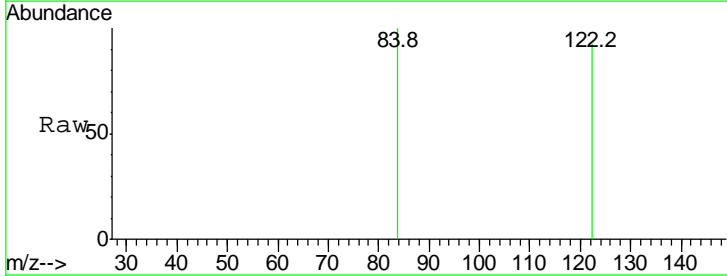
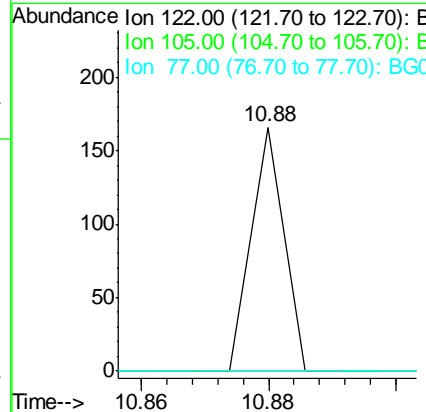
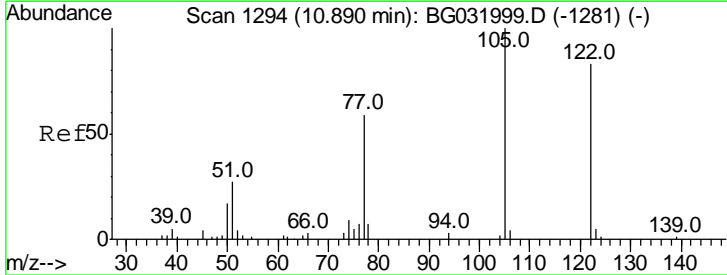
Instrument :
 BNA_G
 ClientSampled :

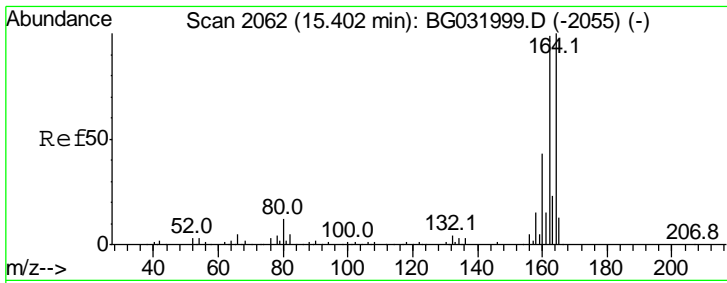
| Tgt Ion | Resp | Lower | Upper |
|---------|------|-------|-------|
| 82 | 100 | | |
| 128 | 48.9 | 29.7 | 44.5# |
| 54 | 45.2 | 43.1 | 64.7 |



#32
 Benzoic acid
 Concen: 5.283 ng
 RT: 10.88 min Scan# 1292
 Delta R.T. -0.01 min
 Lab File: BG032039.D
 Acq: 15 Jan 2018 19:29

| Tgt Ion | Resp | Lower | Upper |
|---------|------|-------|--------|
| 122 | 100 | | |
| 105 | 0.0 | 123.5 | 163.5# |
| 77 | 0.0 | 85.7 | 125.7# |

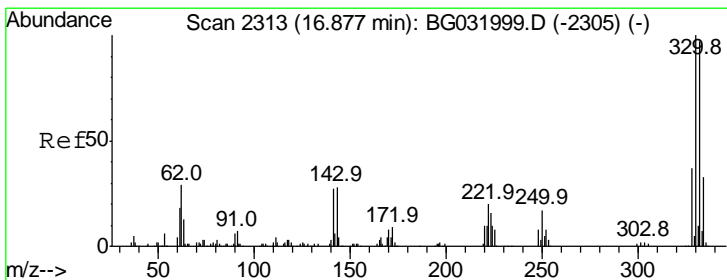
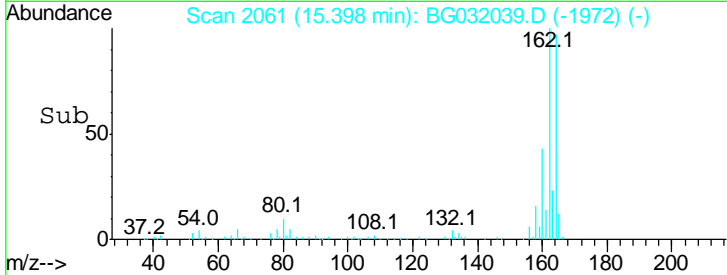
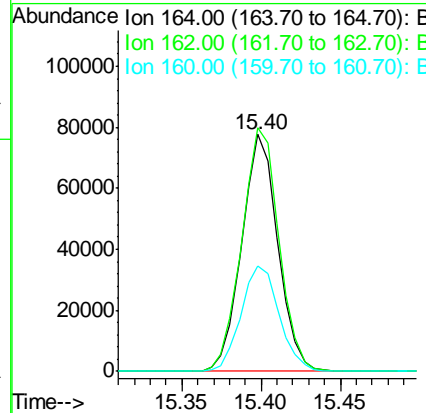
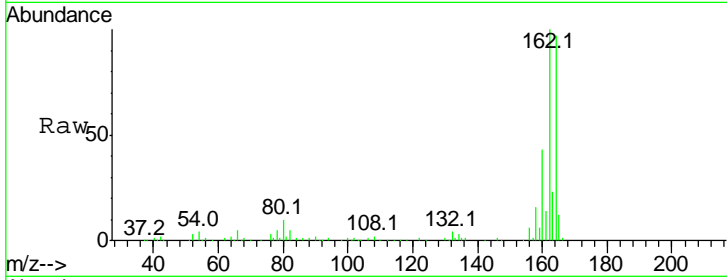




#38
 Acenaphthene-d10
 Concen: 20.000 ng
 RT: 15.40 min Scan# 2061
 Delta R.T. -0.00 min
 Lab File: BG032039.D
 Acq: 15 Jan 2018 19:29

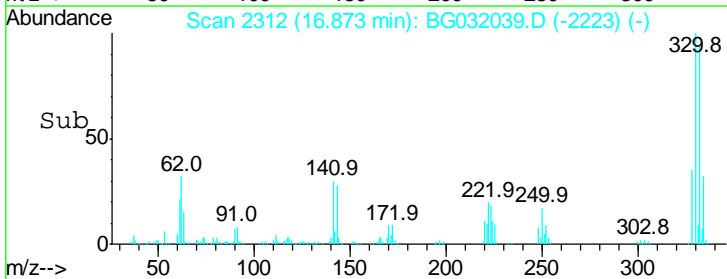
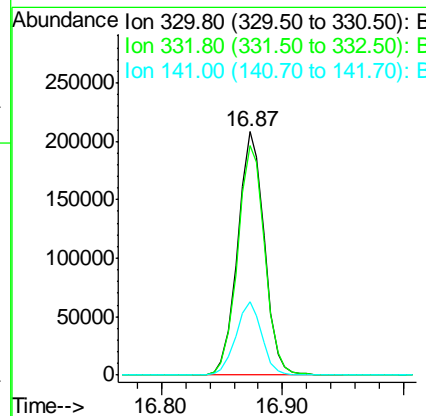
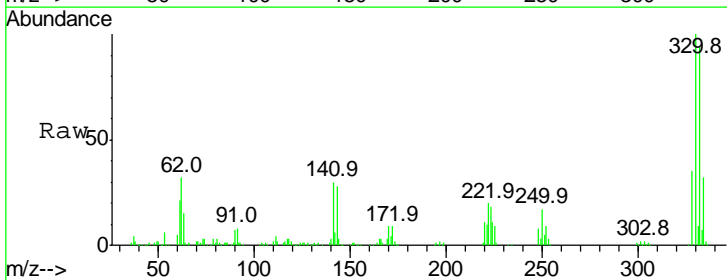
Instrument :
 BNA_G
 ClientSampled :

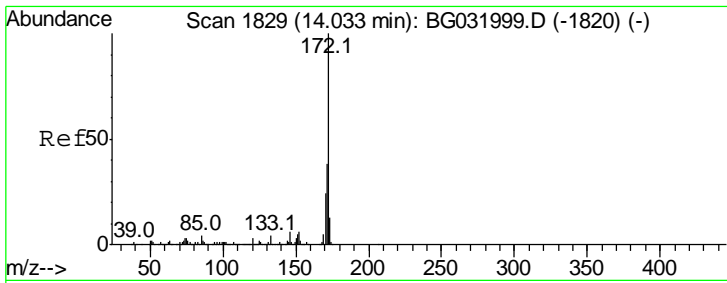
| Tgt Ion | Resp | Lower | Upper |
|---------|-------|-------|-------|
| 164 | 100 | | |
| 162 | 102.7 | 78.8 | 118.2 |
| 160 | 44.6 | 35.4 | 53.0 |



#41
 2,4,6-Tribromophenol
 Concen: 157.947 ng
 RT: 16.87 min Scan# 2312
 Delta R.T. -0.00 min
 Lab File: BG032039.D
 Acq: 15 Jan 2018 19:29

| Tgt Ion | Resp | Lower | Upper |
|---------|------|-------|-------|
| 330 | 100 | | |
| 332 | 96.0 | 77.0 | 115.6 |
| 141 | 29.3 | 25.2 | 37.8 |

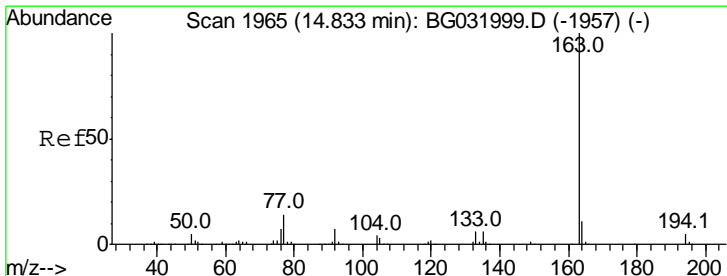
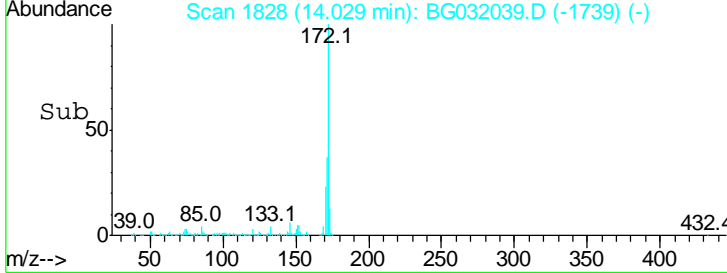
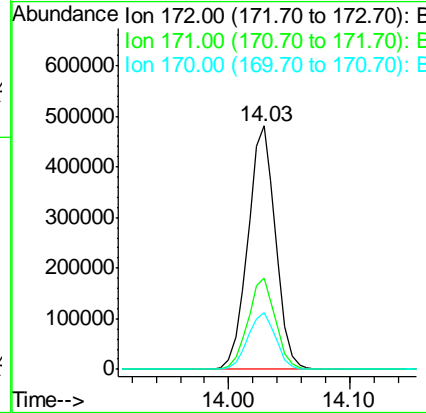
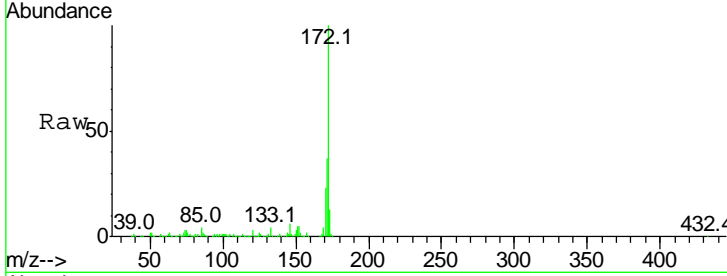




#44
 2-Fluorobiphenyl
 Concen: 77.224 ng
 RT: 14.03 min Scan# 1828
 Delta R.T. -0.00 min
 Lab File: BG032039.D
 Acq: 15 Jan 2018 19:29

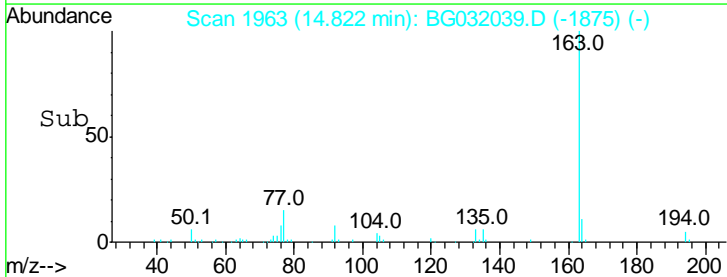
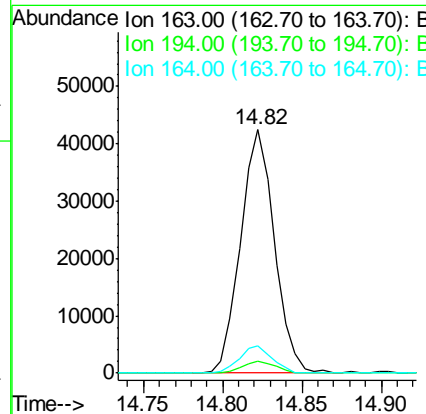
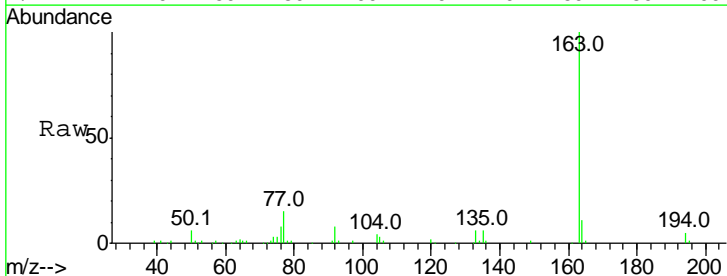
Instrument :
 BNA_G
 ClientSampled :

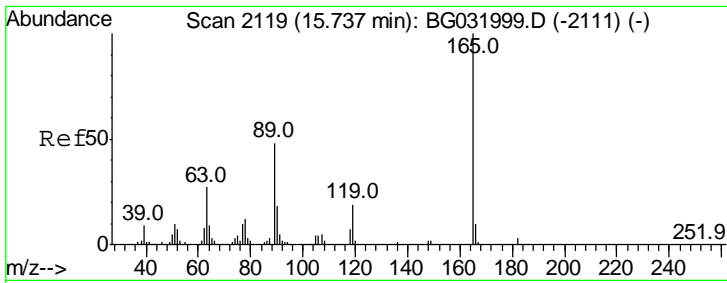
| Tgt Ion | Resp | Lower | Upper |
|---------|------|-------|-------|
| 172 | 100 | | |
| 171 | 37.3 | 30.0 | 45.0 |
| 170 | 23.4 | 19.5 | 29.3 |



#49
 Dimethylphthalate
 Concen: 5.848 ng
 RT: 14.82 min Scan# 1963
 Delta R.T. -0.01 min
 Lab File: BG032039.D
 Acq: 15 Jan 2018 19:29

| Tgt Ion | Resp | Lower | Upper |
|---------|------|-------|-------|
| 163 | 100 | | |
| 194 | 4.7 | 3.4 | 5.2 |
| 164 | 11.3 | 8.2 | 12.4 |

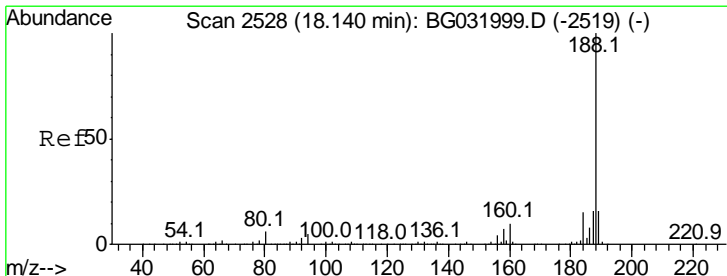
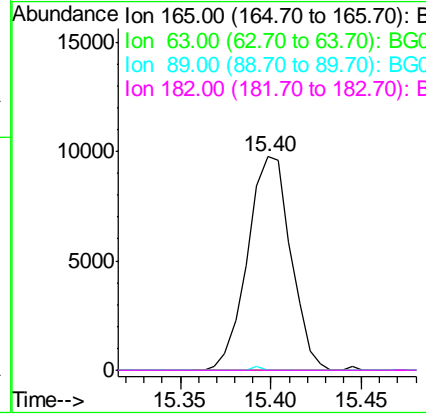
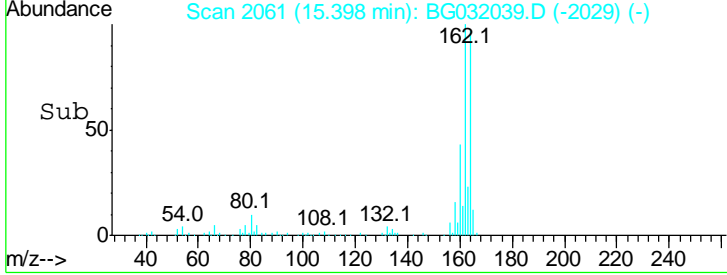
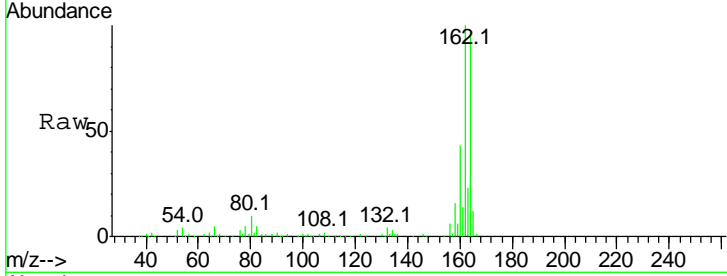




#56
 2,4-Dinitrotoluene
 Concen: 5.388 ng
 RT: 15.40 min Scan# 2061
 Delta R.T. -0.34 min
 Lab File: BG032039.D
 Acq: 15 Jan 2018 19:29

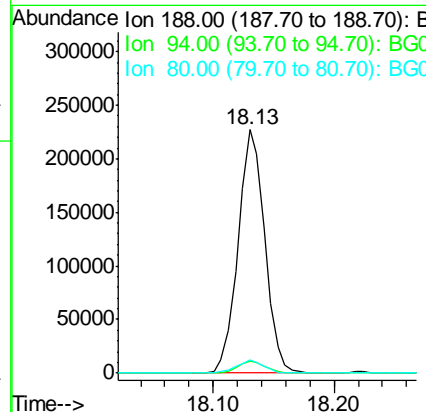
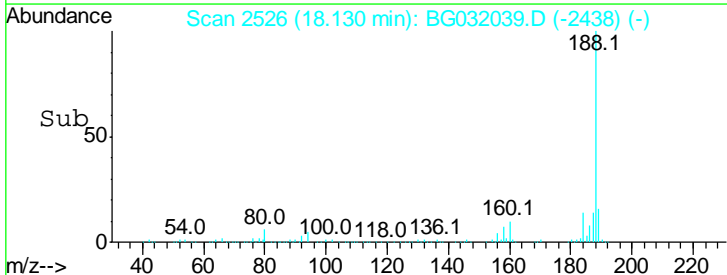
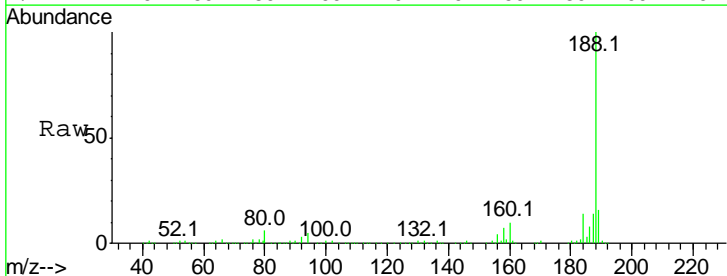
Instrument :
 BNA_G
 ClientSampled :

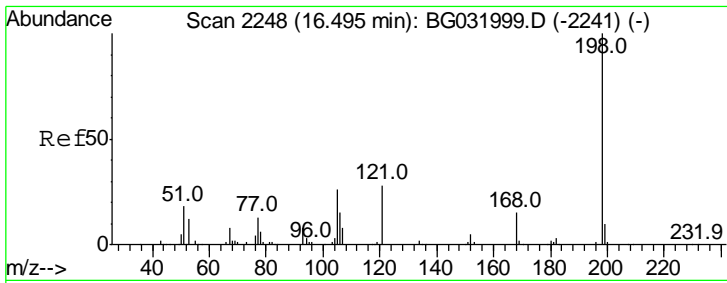
| Tgt Ion | Resp | Lower | Upper |
|---------|-------|-------|--------|
| 165 | 16135 | | |
| 63 | 0.0 | 42.0 | 63.0# |
| 89 | 0.0 | 66.9 | 100.3# |
| 182 | 0.0 | 2.6 | 3.8# |



#63
 Phenanthrene-d10
 Concen: 20.000 ng
 RT: 18.13 min Scan# 2526
 Delta R.T. -0.01 min
 Lab File: BG032039.D
 Acq: 15 Jan 2018 19:29

| Tgt Ion | Resp | Lower | Upper |
|---------|--------|-------|-------|
| 188 | 350199 | | |
| 94 | 4.9 | 6.9 | 10.3# |
| 80 | 5.7 | 7.7 | 11.5# |

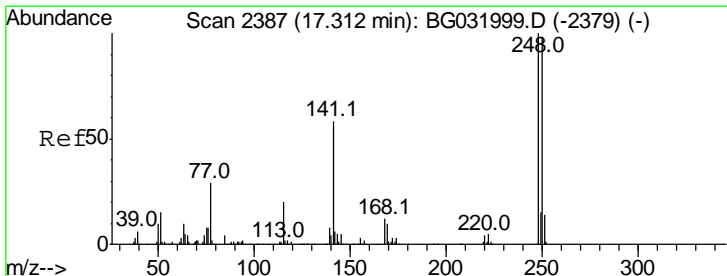
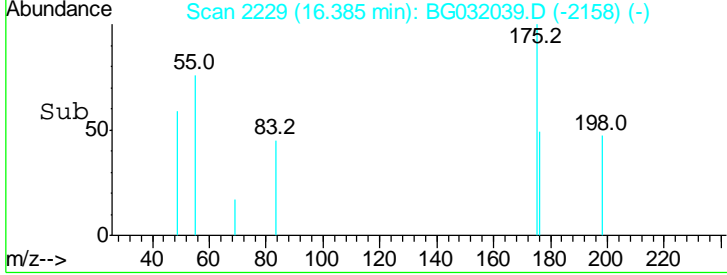
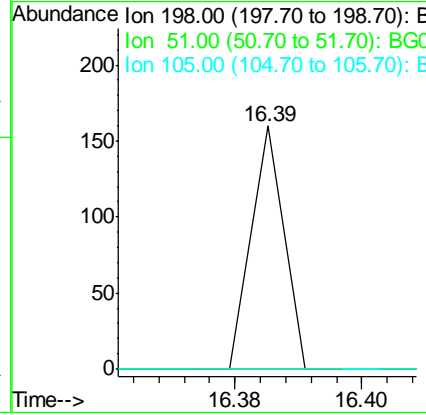
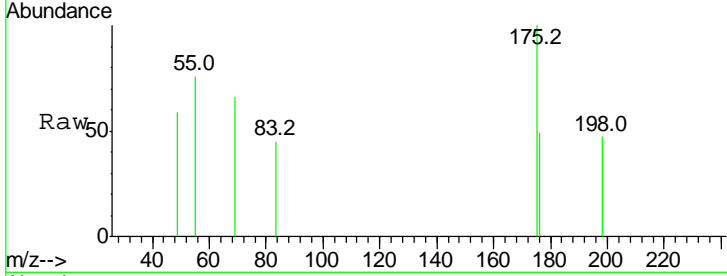




#64
 4,6-Dinitro-2-methylphenol
 Concen: 4.907 ng
 RT: 16.39 min Scan# 2229
 Delta R.T. -0.11 min
 Lab File: BG032039.D
 Acq: 15 Jan 2018 19:29

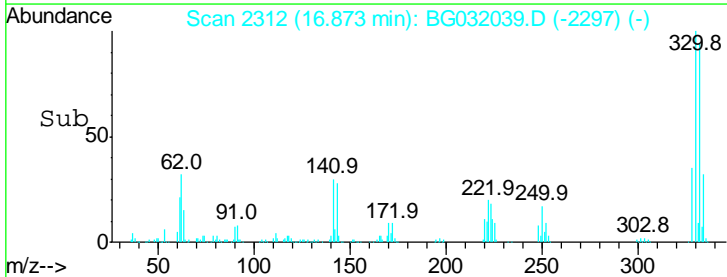
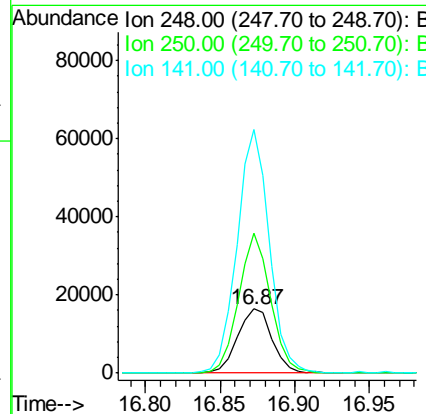
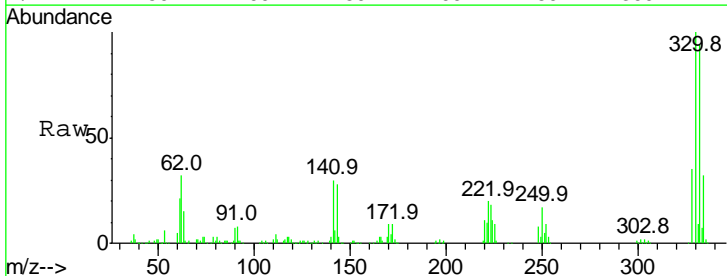
Instrument :
 BNA_G
 ClientSampled :

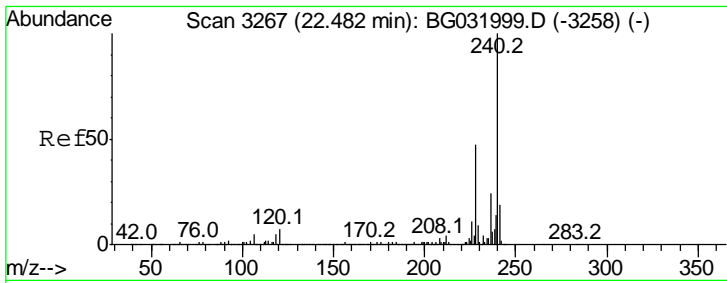
| Tgt Ion | Resp | Lower | Upper |
|---------|------|-------|-------|
| 198 | 100 | | |
| 51 | 0.0 | 30.6 | 70.6# |
| 105 | 0.0 | 23.8 | 63.8# |



#66
 4-Bromophenyl-phenylether
 Concen: 5.314 ng
 RT: 16.87 min Scan# 2312
 Delta R.T. -0.44 min
 Lab File: BG032039.D
 Acq: 15 Jan 2018 19:29

| Tgt Ion | Resp | Lower | Upper |
|---------|-------|-------|--------|
| 248 | 100 | | |
| 250 | 217.3 | 77.1 | 115.7# |
| 141 | 379.5 | 50.8 | 76.2# |

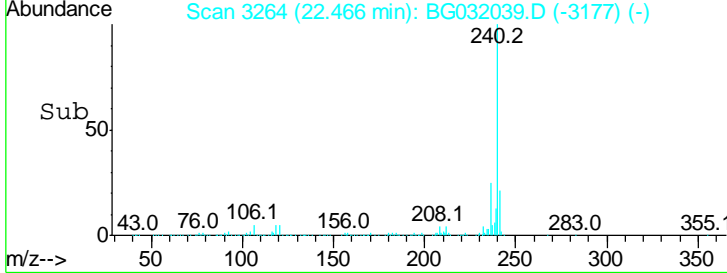
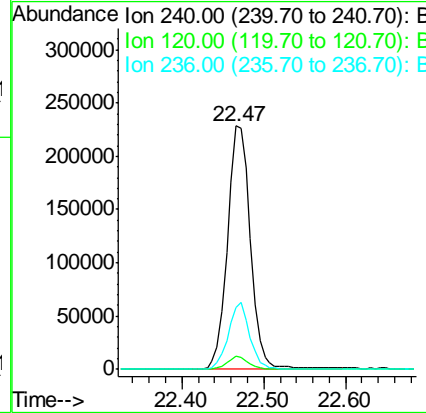
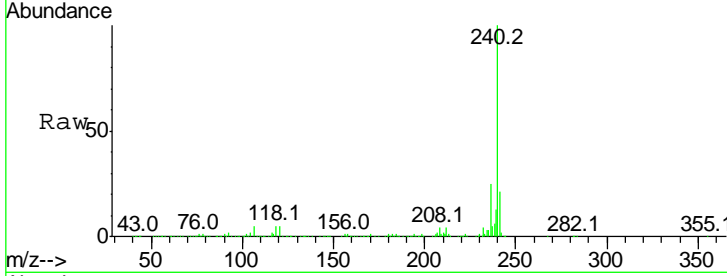




#75
 Chrysene-d12
 Concen: 20.000 ng
 RT: 22.47 min Scan# 3264
 Delta R.T. -0.02 min
 Lab File: BG032039.D
 Acq: 15 Jan 2018 19:29

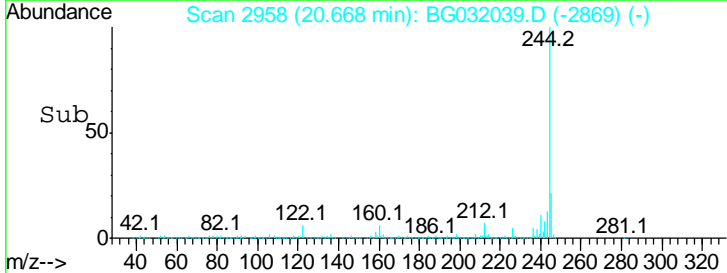
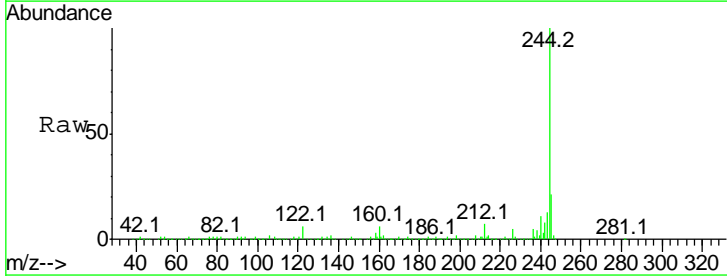
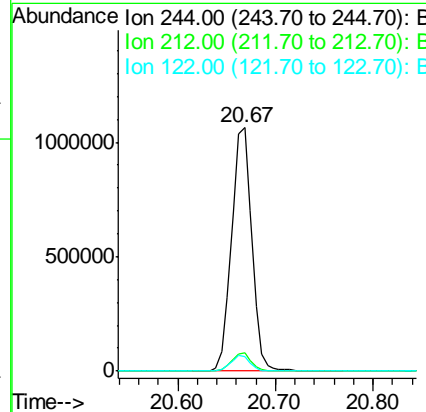
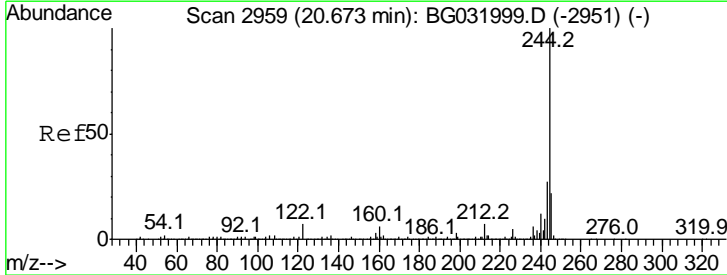
Instrument :
 BNA_G
 ClientSampled :

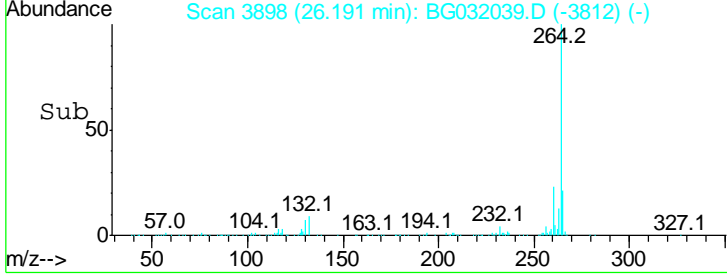
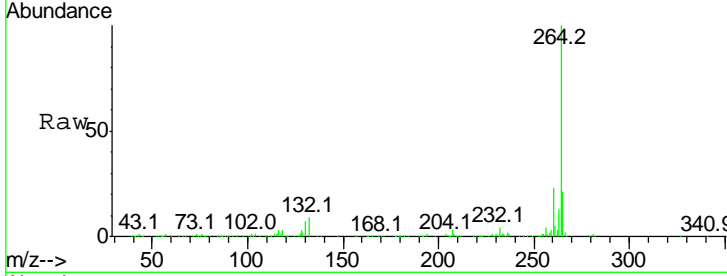
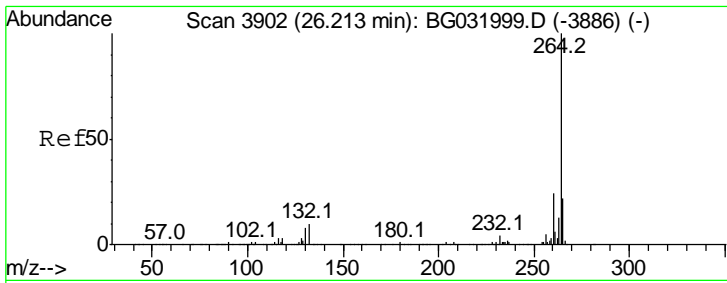
| Tgt Ion | Resp | Lower | Upper |
|---------|------|-------|-------|
| 240 | 100 | | |
| 120 | 5.3 | 6.8 | 10.2# |
| 236 | 25.2 | 20.9 | 31.3 |



#78
 Terphenyl-d14
 Concen: 75.707 ng
 RT: 20.67 min Scan# 2958
 Delta R.T. -0.00 min
 Lab File: BG032039.D
 Acq: 15 Jan 2018 19:29

| Tgt Ion | Resp | Lower | Upper |
|---------|------|-------|-------|
| 244 | 100 | | |
| 212 | 7.3 | 5.8 | 8.8 |
| 122 | 5.8 | 7.0 | 10.4# |





#86
 Perylene-d12
 Concen: 20.000 ng
 RT: 26.19 min Scan# 3898
 Delta R.T. -0.02 min
 Lab File: BG032039.D
 Acq: 15 Jan 2018 19:29

Instrument :
 BNA_G
 ClientSampled :

| Tot Ion | Ratio | Lower | Upper |
|---------|-------|-------|-------|
| 264 | 100 | | |
| 260 | 23.3 | 17.4 | 26.0 |
| 265 | 20.9 | 17.7 | 26.5 |

