

Data Path : Z:\svoasrv\HPCHEM1\BNA_G\Data\BG011723\
 Data File : BG056314.D
 Acq On : 17 Jan 2023 14:21
 Operator : CG/JU
 Sample : 01161-01DL2 50X
 Misc :
 ALS Vial : 8 Sample Multiplier: 1

Instrument :
 BNA_G
 ClientSampleId :
 20230113-H4-STOCKPILEDL2

Quant Time: Jan 17 15:06:35 2023
 Quant Method : Z:\svoasrv\HPCHEM1\BNA_G\Methods\8270-BG122722.M
 Quant Title : ASP BNA STANDARDS FOR 5 POINT CALIBRATION
 QLast Update : Thu Jan 12 03:38:40 2023
 Response via : Initial Calibration

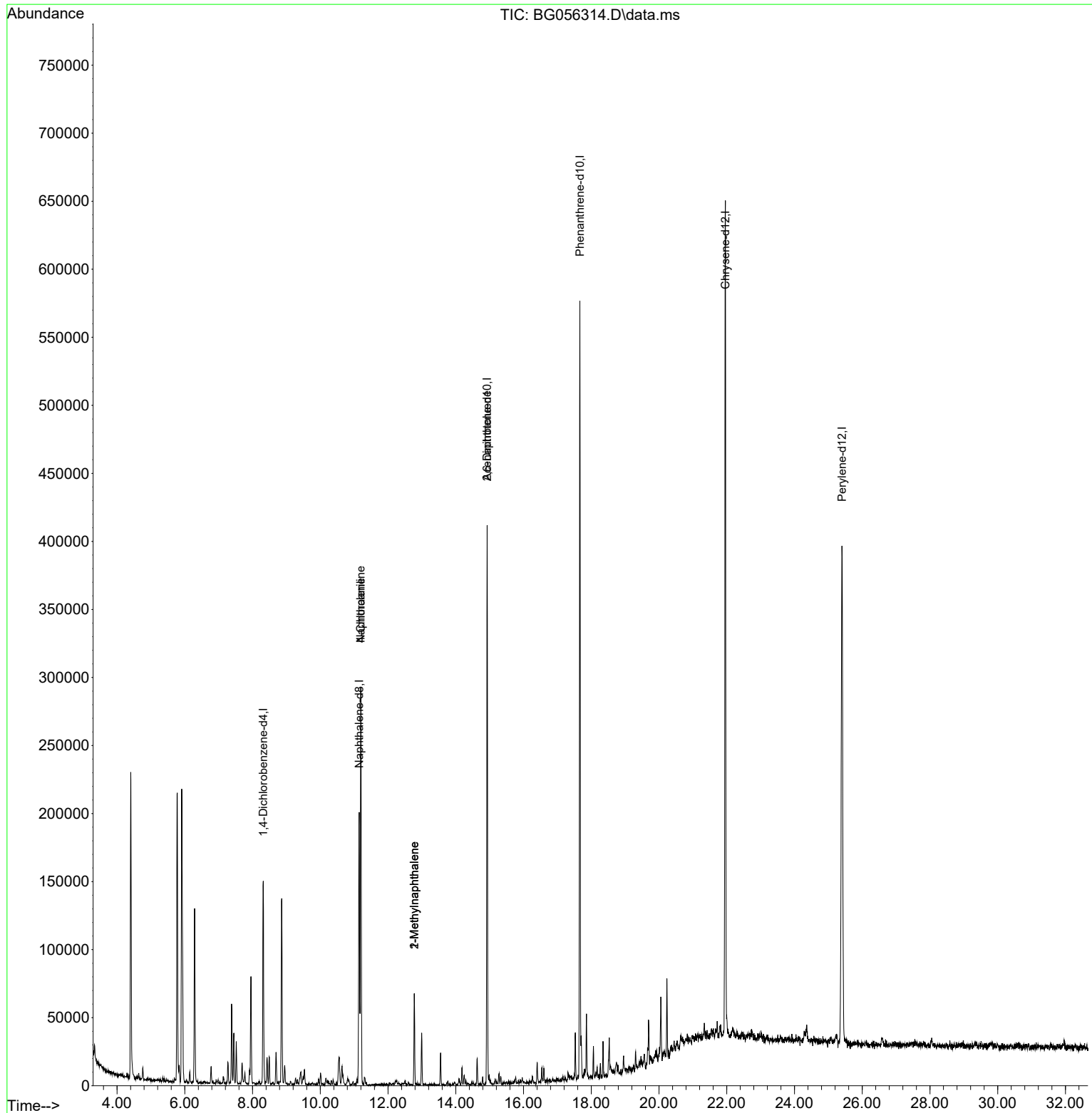
Compound	R.T.	QIon	Response	Conc	Units	Dev(Min)
Internal Standards						
1) 1,4-Dichlorobenzene-d4	8.317	152	51022	20.000	ng	0.00
21) Naphthalene-d8	11.149	136	189750	20.000	ng	0.00
39) Acenaphthene-d10	14.927	164	150358	20.000	ng	0.00
64) Phenanthrene-d10	17.665	188	398967	20.000	ng	0.00
76) Chrysene-d12	21.960	240	424352	20.000	ng	0.00
86) Perylene-d12	25.403	264	468739	20.000	ng	0.00
System Monitoring Compounds						
5) 2-Fluorophenol	5.831	112	5435	1.902	ng	0.00
7) Phenol-d6	7.447	99	7045	1.605	ng	0.00
23) Nitrobenzene-d5	9.486	82	3928	1.059	ng	0.00
42) 2,4,6-Tribromophenol	16.407	330	3057	1.605	ng	0.00
45) 2-Fluorobiphenyl	13.552	172	13088	1.202	ng	0.00
79) Terphenyl-d14	20.232	244	28647	1.209	ng	0.00
Target Compounds						
31) Naphthalene	11.196	128	268182	26.855	ng	97
33) 4-Chloroaniline	11.196	127	36702	7.698	ng	# 37
37) 2-Methylnaphthalene	12.776	142	32326	3.834	ng	93
38) 1-Methylnaphthalene	12.776	142	32326	4.128	ng	99
51) 2,6-Dinitrotoluene	14.927	165	20179	7.802	ng	# 33

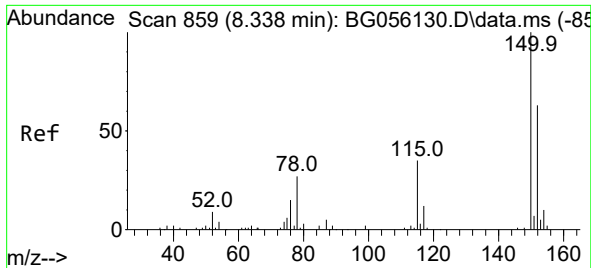
(#) = qualifier out of range (m) = manual integration (+) = signals summed

Data Path : Z:\svoasrv\HPCHEM1\BNA_G\Data\BG011723\
 Data File : BG056314.D
 Acq On : 17 Jan 2023 14:21
 Operator : CG/JU
 Sample : 01161-01DL2 50X
 Misc :
 ALS Vial : 8 Sample Multiplier: 1

Instrument :
 BNA_G
 ClientSampleId :
 20230113-H4-STOCKPILEDL2

Quant Time: Jan 17 15:06:35 2023
 Quant Method : Z:\svoasrv\HPCHEM1\BNA_G\Methods\8270-BG122722.M
 Quant Title : ASP BNA STANDARDS FOR 5 POINT CALIBRATION
 QLast Update : Thu Jan 12 03:38:40 2023
 Response via : Initial Calibration

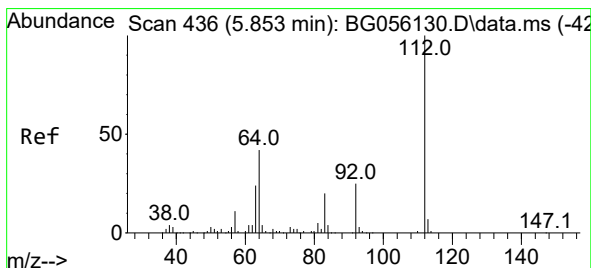
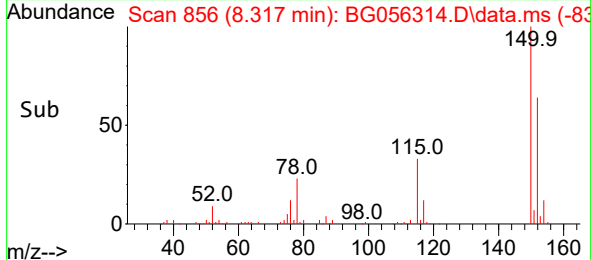
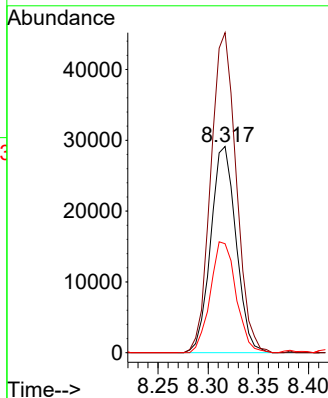
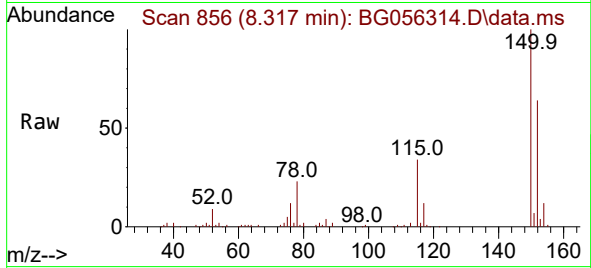




#1
 1,4-Dichlorobenzene-d4
 Concen: 20.000 ng
 RT: 8.317 min Scan# 81
 Delta R.T. -0.000 min
 Lab File: BG056314.D
 Acq: 17 Jan 2023 14:21

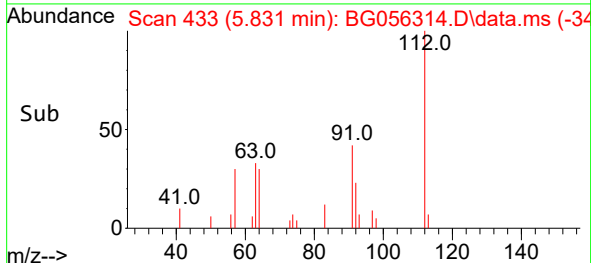
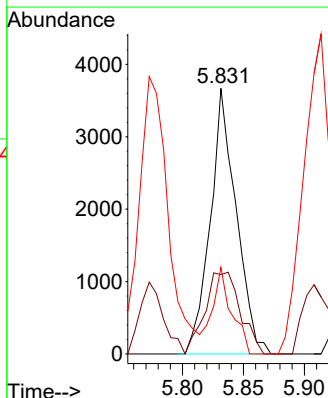
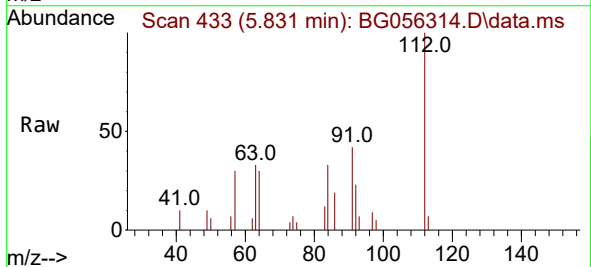
Instrument : BNA_G
 ClientSampleId : 20230113-H4-STOCKPILEDL2

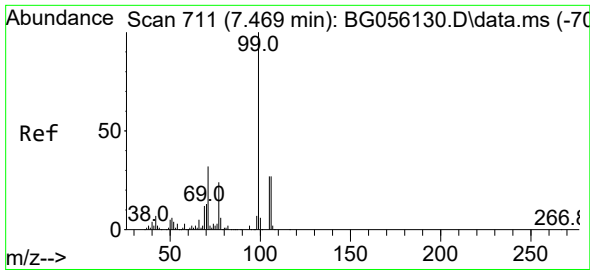
Tgt Ion:152 Resp: 51022
 Ion Ratio Lower Upper
 152 100
 150 155.2 127.9 191.9
 115 52.9 44.2 66.2



#5
 2-Fluorophenol
 Concen: 1.902 ng
 RT: 5.831 min Scan# 433
 Delta R.T. 0.006 min
 Lab File: BG056314.D
 Acq: 17 Jan 2023 14:21

Tgt Ion:112 Resp: 5435
 Ion Ratio Lower Upper
 112 100
 64 29.9 33.3 49.9#
 63 32.6 19.0 28.4#



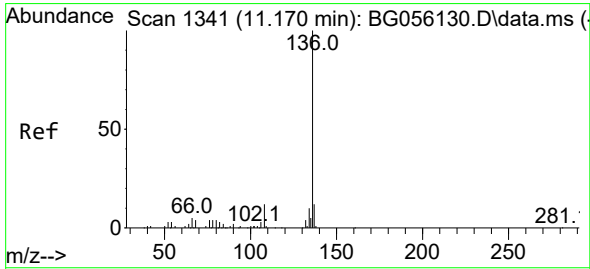
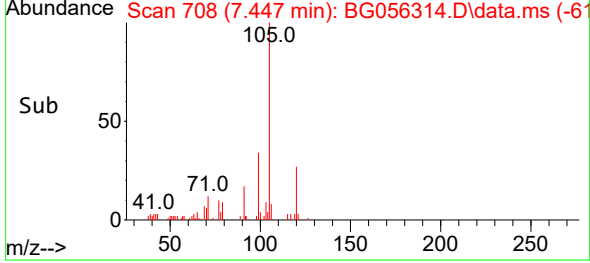
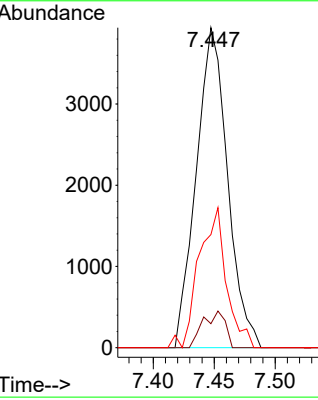
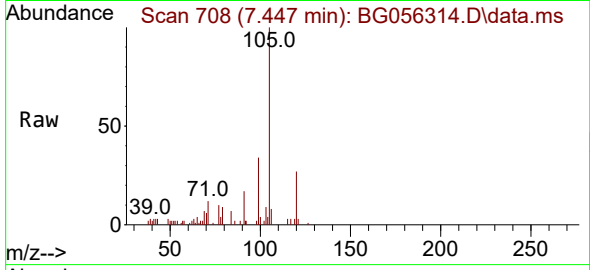


#7
 Phenol-d6
 Concen: 1.605 ng
 RT: 7.447 min Scan# 708
 Delta R.T. 0.000 min
 Lab File: BG056314.D
 Acq: 17 Jan 2023 14:21

Instrument : BNA_G
 ClientSampleId : 20230113-H4-STOCKPILEDL2

Tgt Ion: 99 Resp: 7045

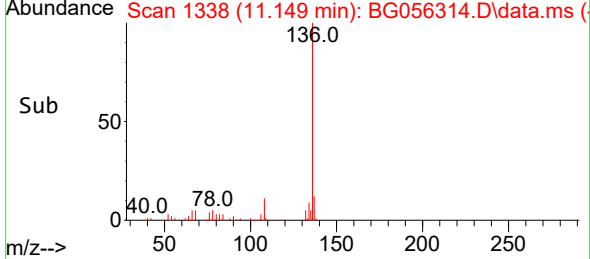
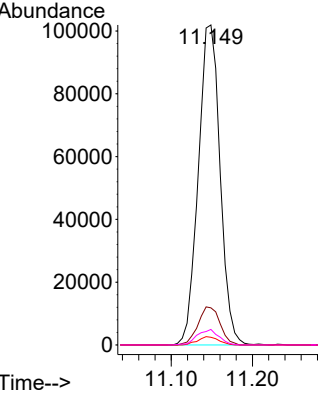
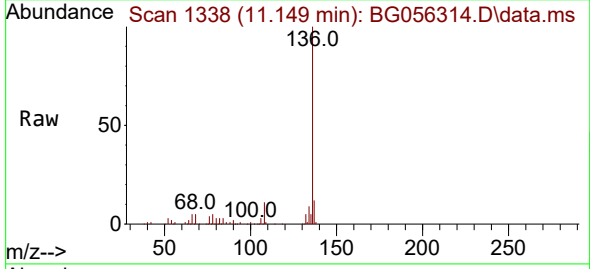
Ion	Ratio	Lower	Upper
99	100		
42	7.5	5.9	8.9
71	35.4	25.4	38.2

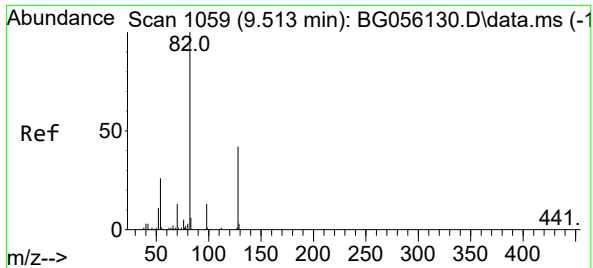


#21
 Naphthalene-d8
 Concen: 20.000 ng
 RT: 11.149 min Scan# 1338
 Delta R.T. 0.000 min
 Lab File: BG056314.D
 Acq: 17 Jan 2023 14:21

Tgt Ion: 136 Resp: 189750

Ion	Ratio	Lower	Upper
136	100		
137	11.6	9.4	14.0
54	2.4	2.2	3.2
68	4.9	3.4	5.0

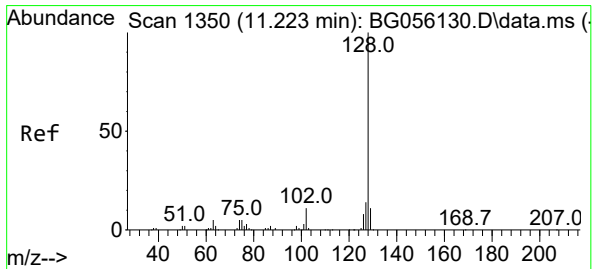
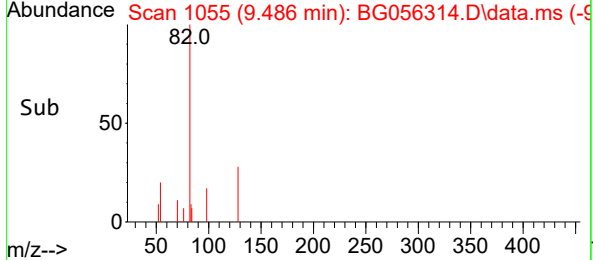
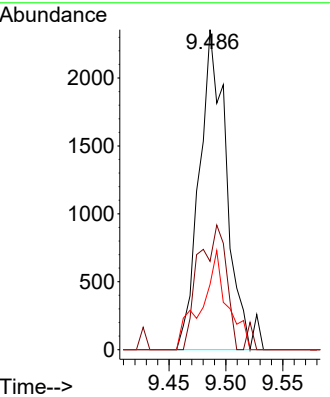
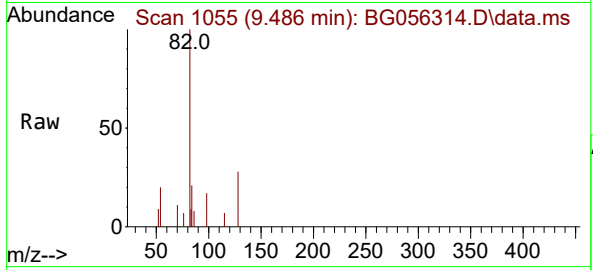




#23
 Nitrobenzene-d5
 Concen: 1.059 ng
 RT: 9.486 min Scan# 1055
 Delta R.T. -0.006 min
 Lab File: BG056314.D
 Acq: 17 Jan 2023 14:21

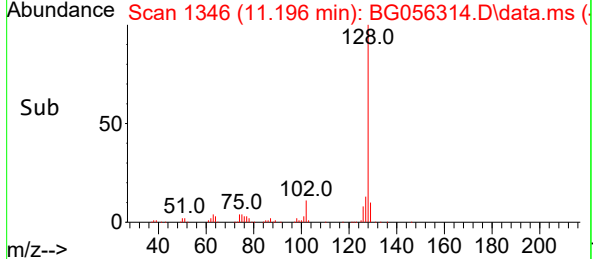
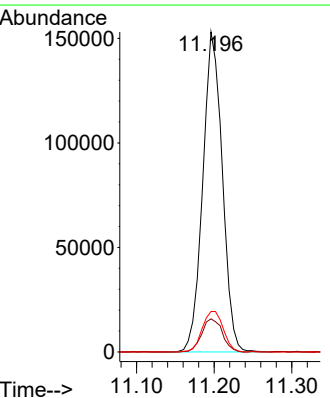
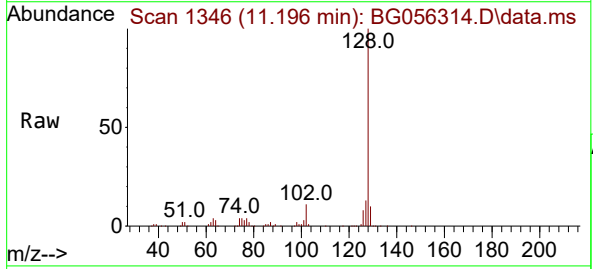
Instrument : BNA_G
 ClientSampleId : 20230113-H4-STOCKPILEDL2

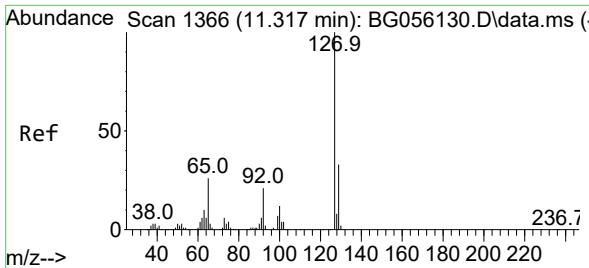
Tgt Ion	Resp	Lower	Upper
82	3928		
128	27.6	33.4	50.2#
54	20.4	20.3	30.5



#31
 Naphthalene
 Concen: 26.855 ng
 RT: 11.196 min Scan# 1346
 Delta R.T. -0.006 min
 Lab File: BG056314.D
 Acq: 17 Jan 2023 14:21

Tgt Ion	Resp	Lower	Upper
128	268182		
129	10.3	8.9	13.3
127	12.7	11.2	16.8



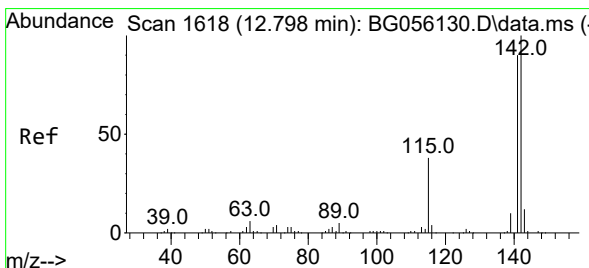
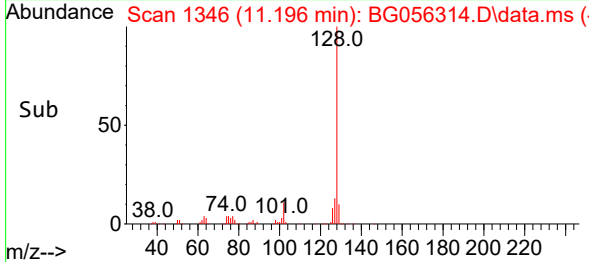
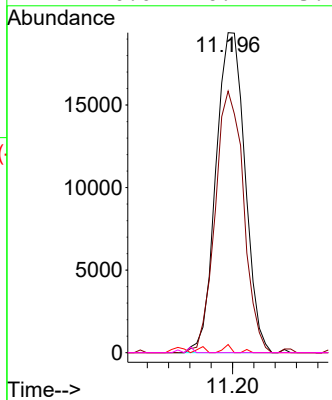
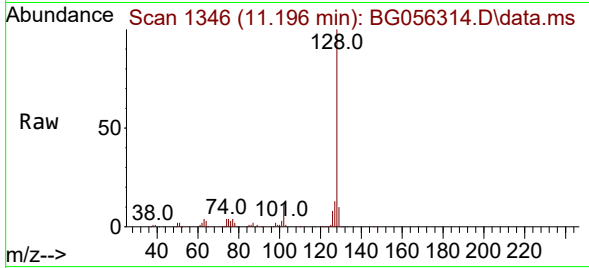


#33
 4-Chloroaniline
 Concen: 7.698 ng
 RT: 11.196 min Scan# 11
 Delta R.T. -0.100 min
 Lab File: BG056314.D
 Acq: 17 Jan 2023 14:21

Instrument :
 BNA_G
 ClientSampleId :
 20230113-H4-STOCKPILEDL2

Tgt Ion:127 Resp: 36702

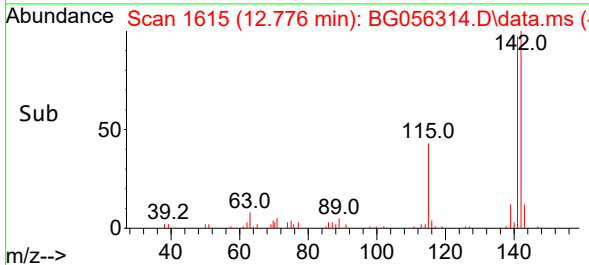
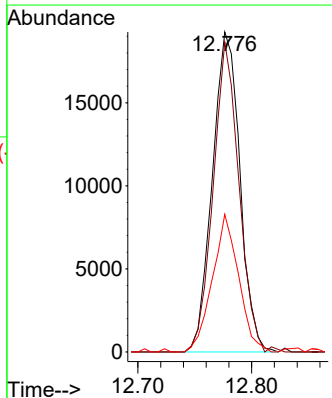
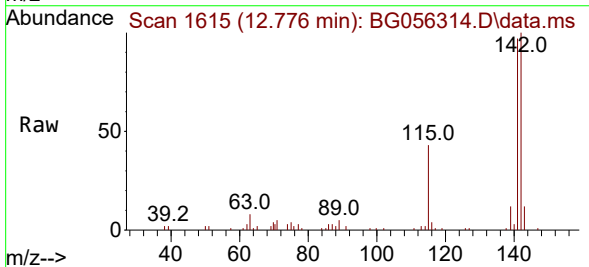
Ion	Ratio	Lower	Upper
127	100		
129	81.7	26.1	39.1#
65	2.6	20.9	31.3#
92	0.0	16.7	25.1#

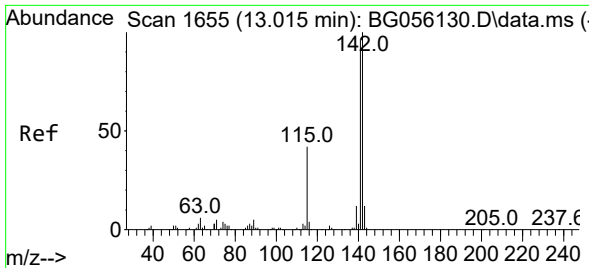


#37
 2-Methylnaphthalene
 Concen: 3.834 ng
 RT: 12.776 min Scan# 1615
 Delta R.T. 0.000 min
 Lab File: BG056314.D
 Acq: 17 Jan 2023 14:21

Tgt Ion:142 Resp: 32326

Ion	Ratio	Lower	Upper
142	100		
141	96.9	72.2	108.4
115	43.0	30.7	46.1



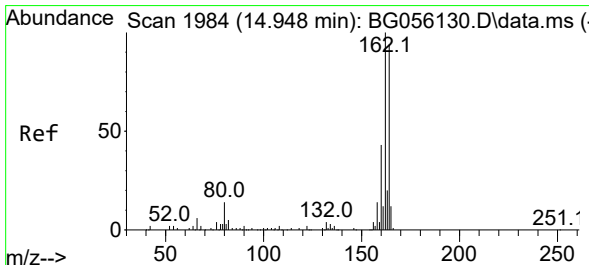
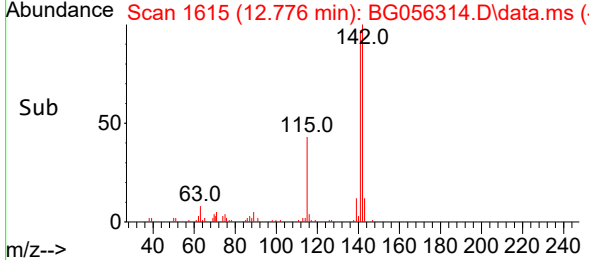
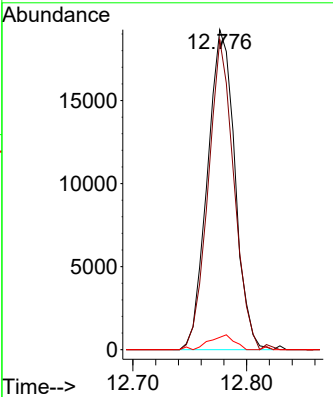
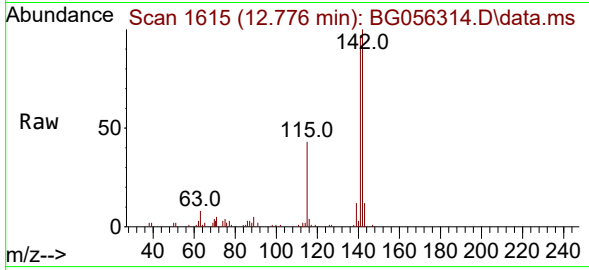


#38
 1-Methylnaphthalene
 Concen: 4.128 ng
 RT: 12.776 min Scan# 10
 Delta R.T. -0.217 min
 Lab File: BG056314.D
 Acq: 17 Jan 2023 14:21

Instrument : BNA_G
 ClientSampleId : 20230113-H4-STOCKPILEDL2

Tgt Ion:142 Resp: 32326

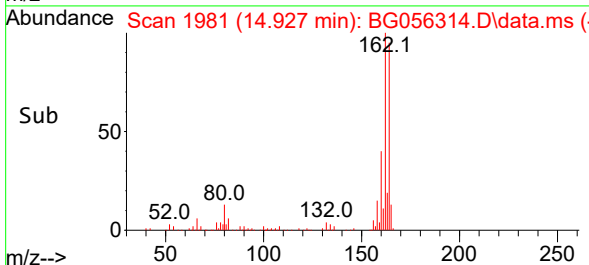
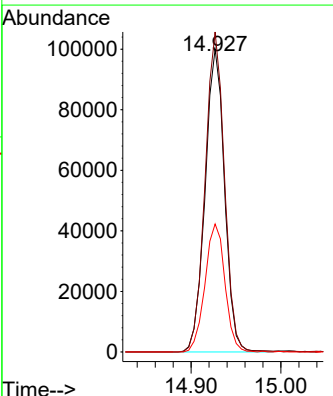
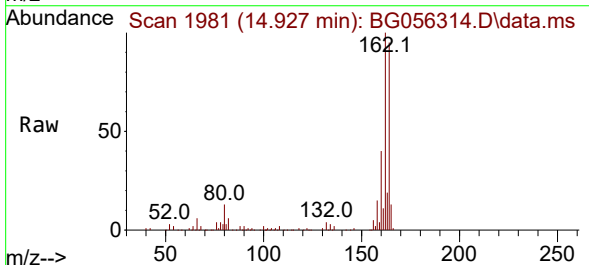
Ion	Ratio	Lower	Upper
142	100		
141	96.9	77.0	115.6
116	3.8	3.6	5.4

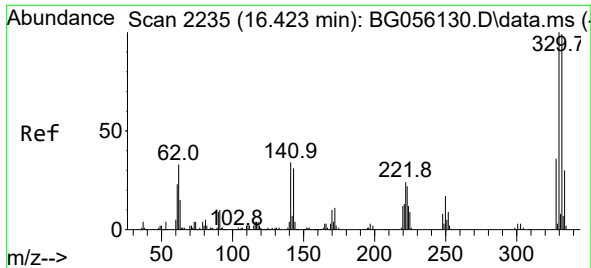


#39
 Acenaphthene-d10
 Concen: 20.000 ng
 RT: 14.927 min Scan# 1981
 Delta R.T. 0.000 min
 Lab File: BG056314.D
 Acq: 17 Jan 2023 14:21

Tgt Ion:164 Resp: 150358

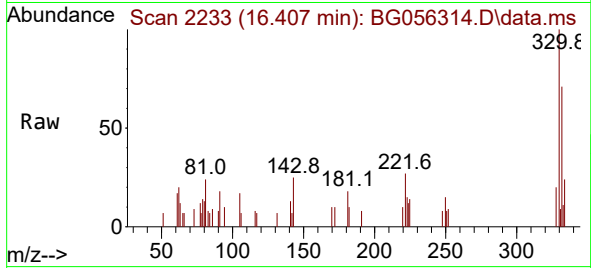
Ion	Ratio	Lower	Upper
164	100		
162	105.6	84.7	127.1
160	42.3	36.3	54.5



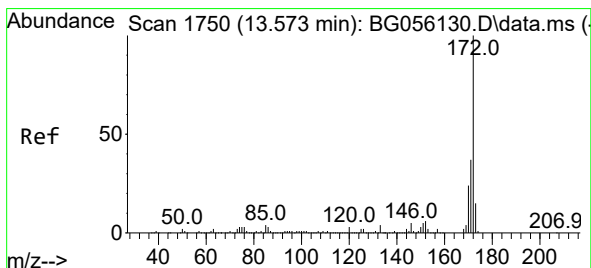
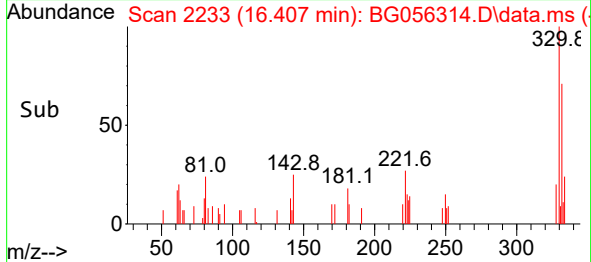
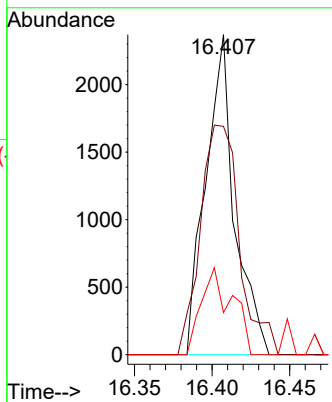


#42
 2,4,6-Tribromophenol
 Concen: 1.605 ng
 RT: 16.407 min Scan# 21
 Delta R.T. 0.000 min
 Lab File: BG056314.D
 Acq: 17 Jan 2023 14:21

Instrument : BNA_G
 ClientSampleId : 20230113-H4-STOCKPILEDL2

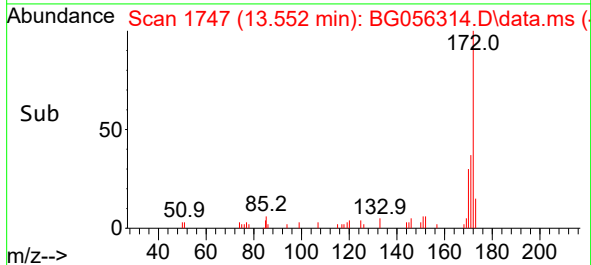
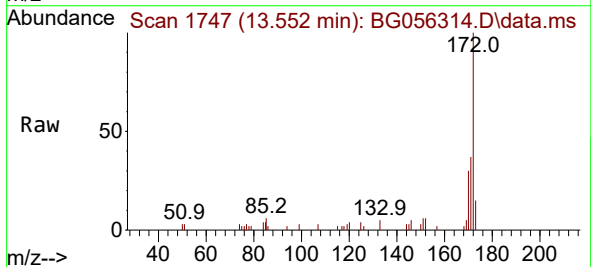
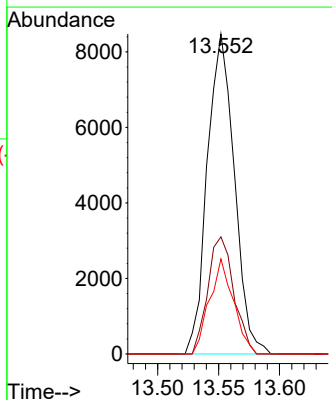


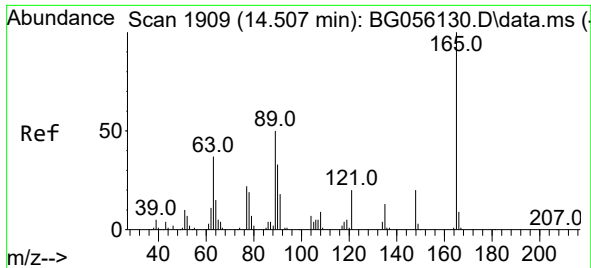
Tgt Ion: 330 Resp: 3057
 Ion Ratio Lower Upper
 330 100
 332 97.3 77.3 115.9
 141 29.0 27.9 41.9



#45
 2-Fluorobiphenyl
 Concen: 1.202 ng
 RT: 13.552 min Scan# 1747
 Delta R.T. -0.006 min
 Lab File: BG056314.D
 Acq: 17 Jan 2023 14:21

Tgt Ion: 172 Resp: 13088
 Ion Ratio Lower Upper
 172 100
 171 36.6 29.6 44.4
 170 29.7 19.4 29.2#

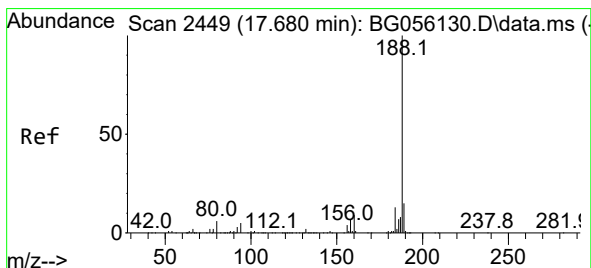
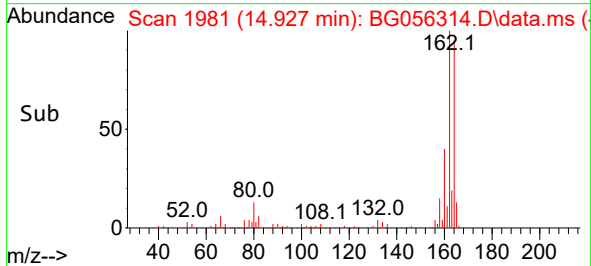
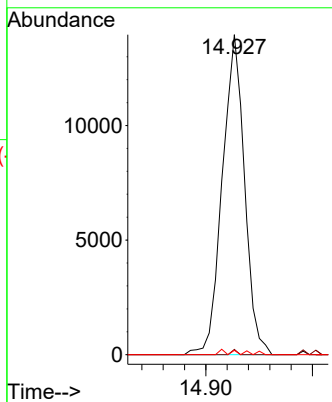
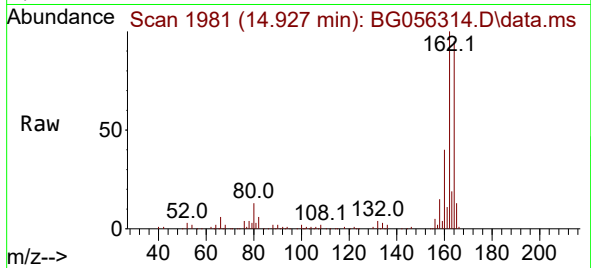




#51
 2,6-Dinitrotoluene
 Concen: 7.802 ng
 RT: 14.927 min Scan# 1909
 Delta R.T. 0.435 min
 Lab File: BG056314.D
 Acq: 17 Jan 2023 14:21

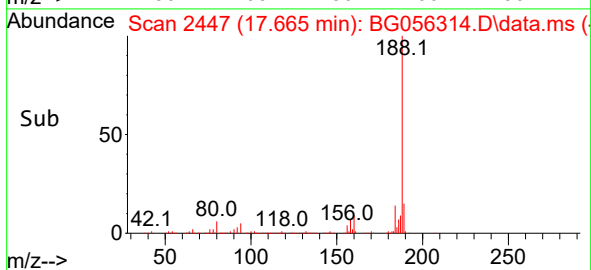
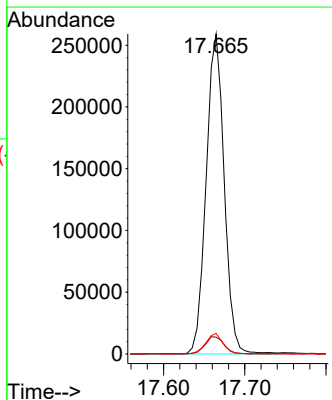
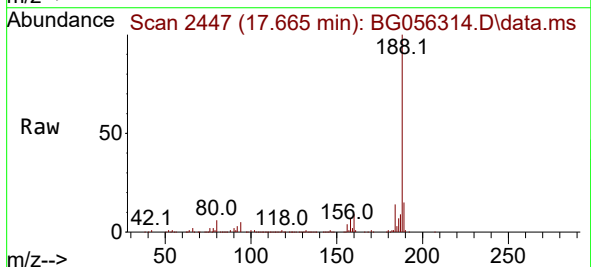
Instrument : BNA_G
 ClientSampleId : 20230113-H4-STOCKPILEDL2

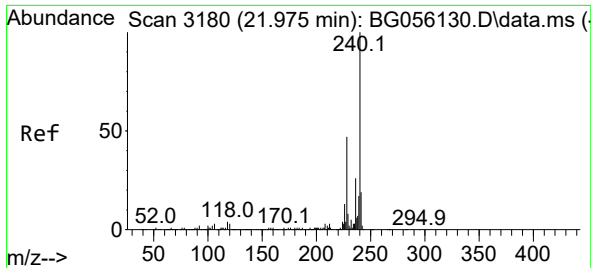
Tgt Ion	Resp	Lower	Upper
165	100		
63	1.6	32.2	48.2#
89	1.4	39.8	59.8#



#64
 Phenanthrene-d10
 Concen: 20.000 ng
 RT: 17.665 min Scan# 2447
 Delta R.T. 0.000 min
 Lab File: BG056314.D
 Acq: 17 Jan 2023 14:21

Tgt Ion	Resp	Lower	Upper
188	100		
94	5.2	4.2	6.2
80	6.4	5.0	7.4



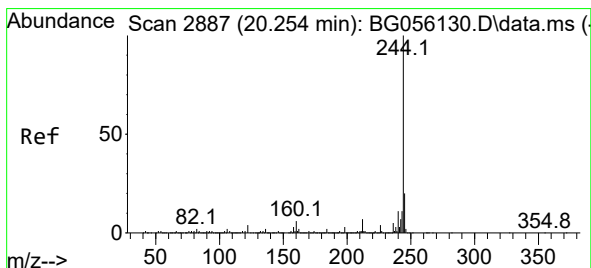
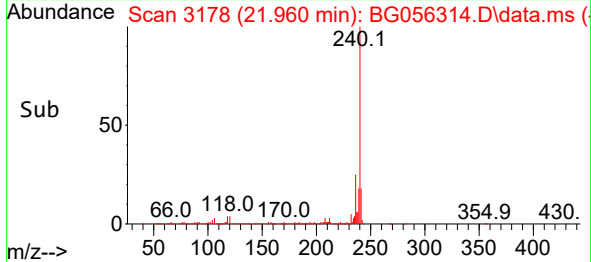
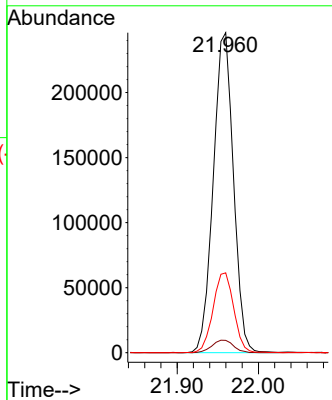
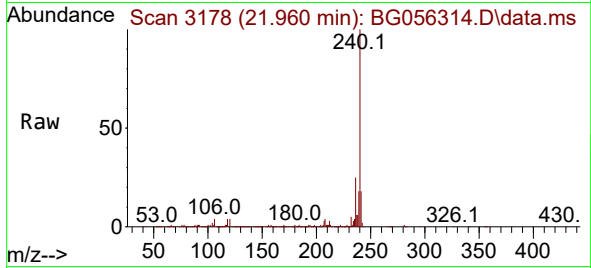


#76
 Chrysene-d12
 Concen: 20.000 ng
 RT: 21.960 min Scan# 31
 Delta R.T. 0.000 min
 Lab File: BG056314.D
 Acq: 17 Jan 2023 14:21

Instrument :
 BNA_G
 ClientSampleId :
 20230113-H4-STOCKPILEDL2

Tgt Ion:240 Resp: 424352

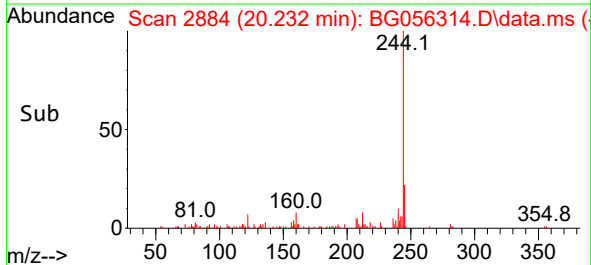
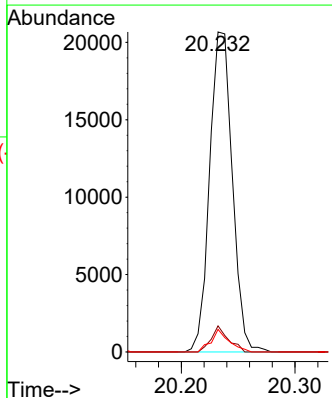
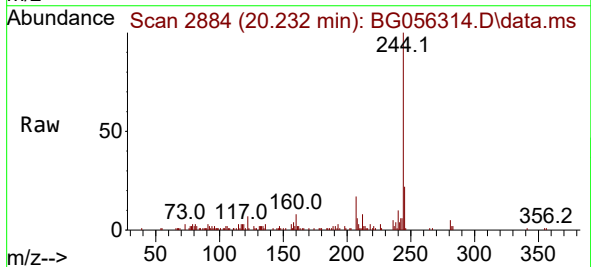
Ion	Ratio	Lower	Upper
240	100		
120	3.9	2.6	4.0
236	25.0	20.8	31.2

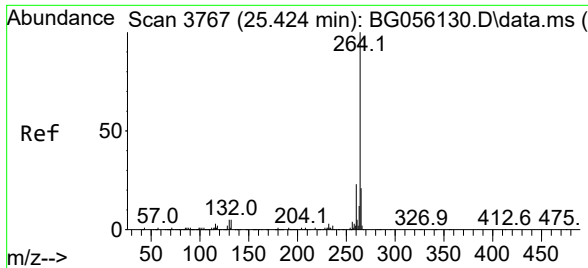


#79
 Terphenyl-d14
 Concen: 1.209 ng
 RT: 20.232 min Scan# 2884
 Delta R.T. -0.006 min
 Lab File: BG056314.D
 Acq: 17 Jan 2023 14:21

Tgt Ion:244 Resp: 28647

Ion	Ratio	Lower	Upper
244	100		
212	8.1	5.7	8.5
122	7.0	3.5	5.3





#86
 Perylene-d12
 Concen: 20.000 ng
 RT: 25.403 min Scan# 31
 Delta R.T. 0.000 min
 Lab File: BG056314.D
 Acq: 17 Jan 2023 14:21

Instrument :
 BNA_G
 ClientSampleId :
 20230113-H4-STOCKPILEDL2

Tgt Ion:264 Resp: 468739

Ion	Ratio	Lower	Upper
264	100		
260	23.3	18.6	28.0
265	21.3	16.7	25.1

