

Data Path : Z:\HPCHEM1\BNA\_G\DATA\BG012015\  
 Data File : BG015904.D  
 Acq On : 20 Jan 2015 22:45  
 Operator : TP/IZ  
 Sample : G1101-05  
 Misc :  
 ALS Vial : 18 Sample Multiplier: 1

Instrument :  
 BNA\_G  
 ClientSampleId :  
 TE-MW-2-26

Integration Parameters: rteint.p  
 Integrator: RTE  
 Smoothing : ON Filtering: 5  
 Sampling : 1 Min Area: 3 % of largest Peak  
 Start Thrs: 0.2 Max Peaks: 100  
 Stop Thrs : 0 Peak Location: TOP

If leading or trailing edge < 100 prefer < Baseline drop else tangent >  
 Peak separation: 5

Method : Z:\HPCHEM1\BNA\_G\METHODS\8270-BG012015.M  
 Title : ASP BNA STANDARDS FOR 5 POINT CALIBRATION

Signal : TIC

peak #	R.T. min	first scan	max scan	last scan	PK TY	peak height	corr. area	corr. % max.	% of total
1	2.829	17	24	32	rBV	749656	1355967	8.96%	1.720%
2	2.905	32	37	51	rVB	4804875	6295263	41.62%	7.987%
3	4.815	354	362	371	rBV	164982	230920	1.53%	0.293%
4	5.285	436	442	451	rBV	1523255	2157561	14.26%	2.737%
5	5.743	515	520	525	rBV2	219410	307894	2.04%	0.391%
6	6.871	704	712	719	rBV	980571	1542664	10.20%	1.957%
7	7.224	763	772	781	rBV	2843292	4404038	29.12%	5.588%
8	7.688	845	851	857	rVB2	609027	965018	6.38%	1.224%
9	8.005	899	905	912	rBV	2498576	4002408	26.46%	5.078%
10	8.845	1040	1048	1056	rBV	2380830	3949251	26.11%	5.011%
11	10.473	1316	1325	1334	rBV	820135	1398508	9.25%	1.774%
12	12.952	1738	1747	1756	rBV	6165990	8856337	58.55%	11.236%
13	14.333	1975	1982	1990	rBV	1463583	2078588	13.74%	2.637%
14	15.826	2228	2236	2246	rBV	6648673	9270273	61.29%	11.762%
15	16.495	2344	2350	2356	rBV6	71171	153315	1.01%	0.195%
16	17.077	2443	2449	2457	rBV2	1999560	2851572	18.85%	3.618%
17	17.982	2598	2603	2611	rBV2	421226	616676	4.08%	0.782%
18	19.263	2817	2821	2832	rBV2	421622	668346	4.42%	0.848%
19	19.715	2892	2898	2905	rBV	11852042	15125289	100.00%	19.190%
20	20.902	3095	3100	3103	rBV	1656304	1815374	12.00%	2.303%
21	20.943	3103	3107	3111	rVV	3464918	3678788	24.32%	4.667%
22	21.178	3144	3147	3151	rVB3	143360	158405	1.05%	0.201%
23	21.266	3156	3162	3168	rVV	2892443	3685083	24.36%	4.675%
24	23.517	3537	3545	3554	rVB2	1642320	3250448	21.49%	4.124%

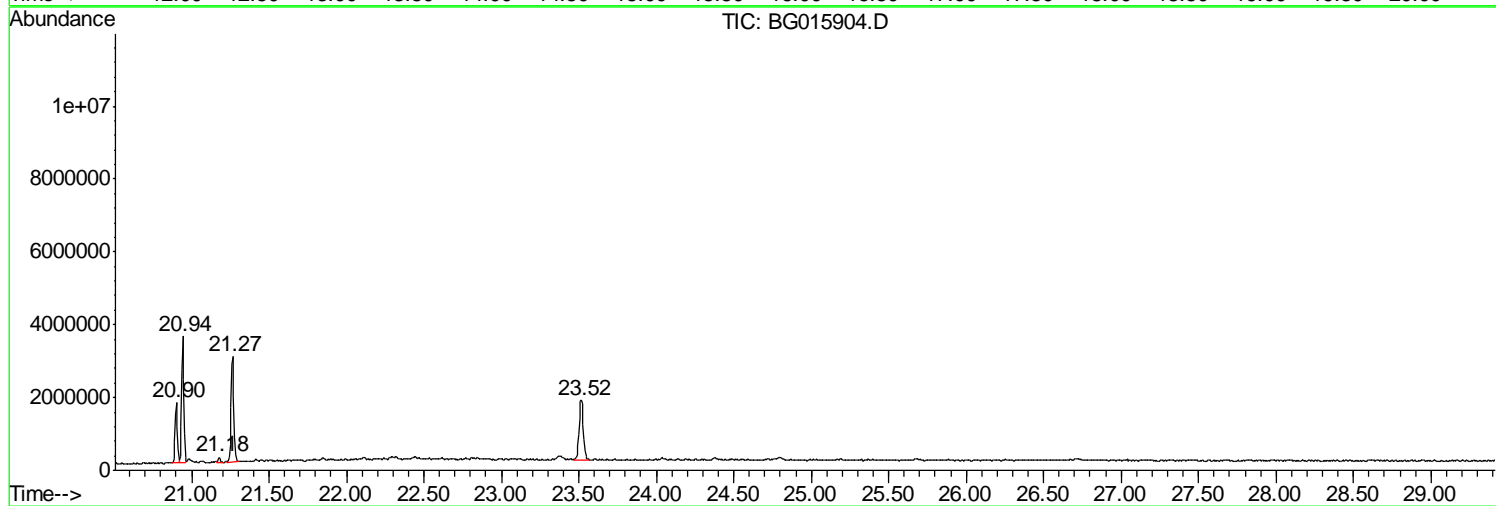
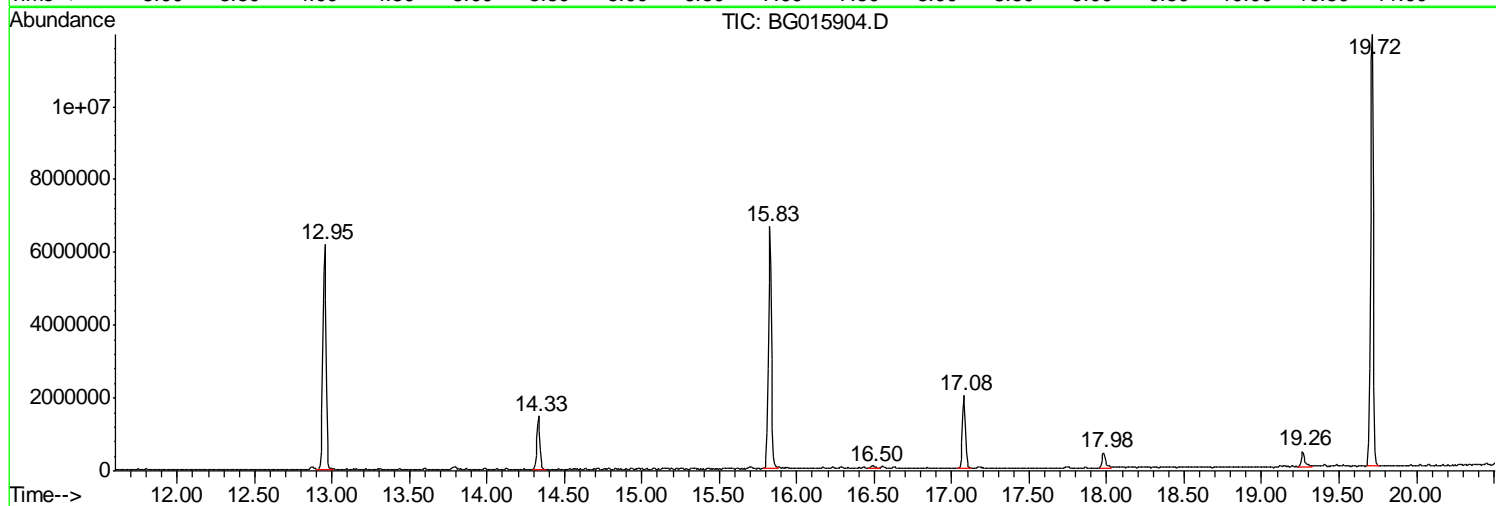
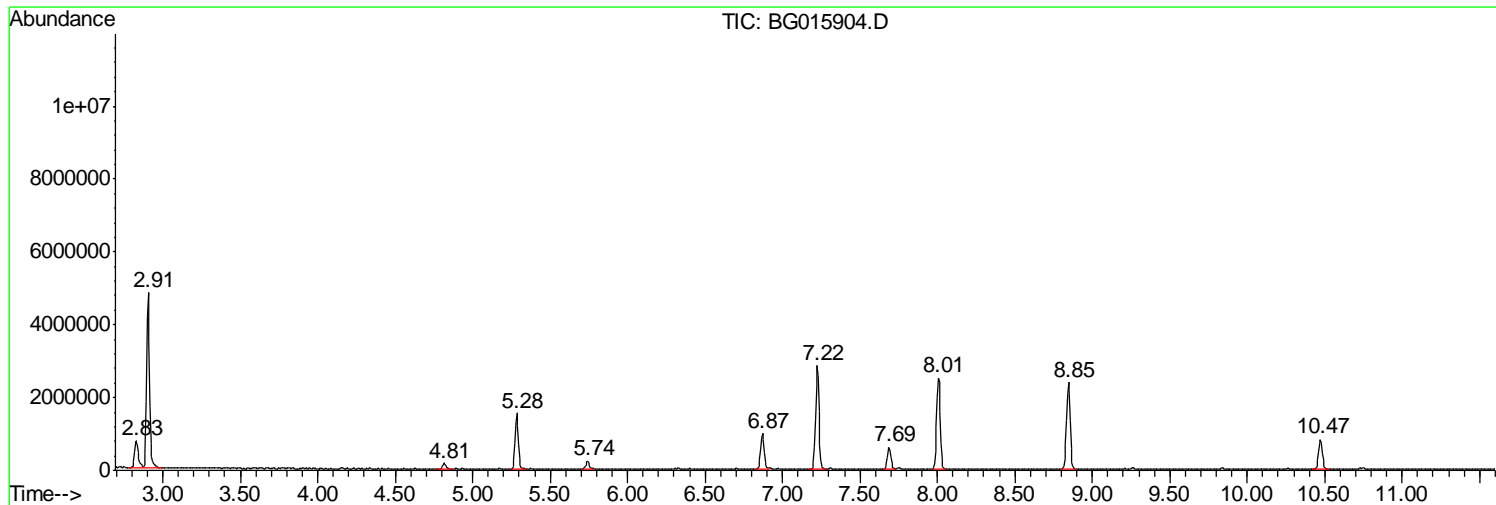
Sum of corrected areas: 78817986

Data Path : Z:\HPCHEM1\BNA\_G\DATA\BG012015\  
Data File : BG015904.D  
Acq On : 20 Jan 2015 22:45  
Operator : TP/IZ  
Sample : G1101-05  
Misc :  
ALS Vial : 18 Sample Multiplier: 1

Instrument :  
BNA\_G  
ClientSampled :  
TE-MW-2-26

Quant Method : Z:\HPCHEM1\BNA\_G\METHODS\8270-BG012015.M  
Quant Title : ASP BNA STANDARDS FOR 5 POINT CALIBRATION

TIC Library : C:\DATABASE\NIST02.L  
TIC Integration Parameters: LSCINT.P



Data Path : Z:\HPCHEM1\BNA\_G\DATA\BG012015\  
 Data File : BG015904.D  
 Acq On : 20 Jan 2015 22:45  
 Operator : TP/IZ  
 Sample : G1101-05  
 Misc :  
 ALS Vial : 18 Sample Multiplier: 1

Instrument :  
 BNA\_G  
 ClientSampleID :  
 TE-MW-2-26

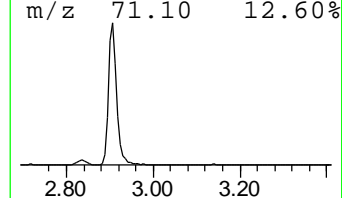
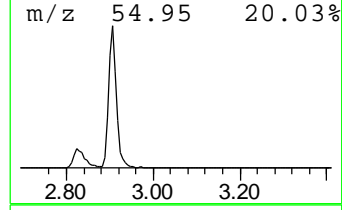
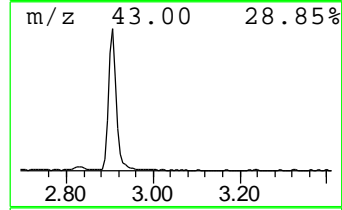
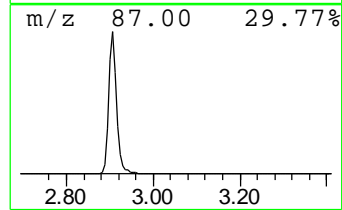
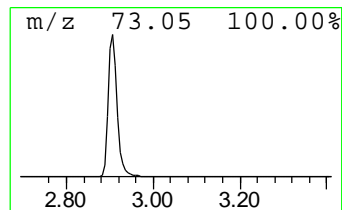
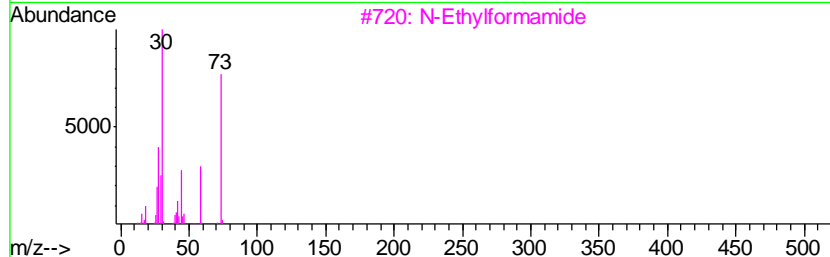
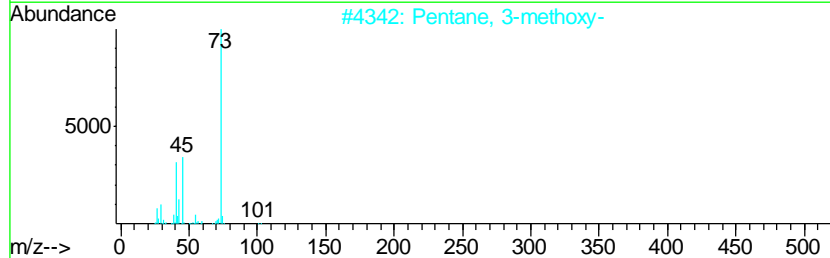
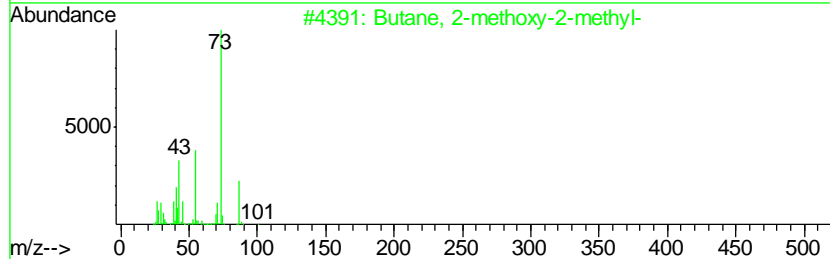
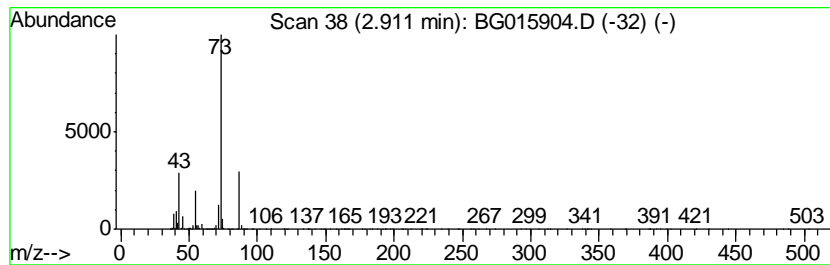
Quant Method : Z:\HPCHEM1\BNA\_G\METHODS\8270-BG012015.M  
 Quant Title : ASP BNA STANDARDS FOR 5 POINT CALIBRATION

TIC Library : C:\DATABASE\NIST02.L  
 TIC Integration Parameters: LSCINT.P

\*\*\*\*\*  
 Peak Number 2 Butane, 2-methoxy-2-methyl- Concentration Rank 1

R.T.	EstConc	Area	Relative to ISTD	R.T.
2.91	130.47 ng	6295260	1,4-Dichlorobenzene-d4	7.69

Hit#	of	Tentative ID	MW	MolForm	CAS#	Qual
1	5	Butane, 2-methoxy-2-methyl-	102	C6H14O	000994-05-8	83
2		Pentane, 3-methoxy-	102	C6H14O	036839-67-5	25
3		N-Ethylformamide	73	C3H7NO	000627-45-2	9
4		Acetamide, N-ethyl-	87	C4H9NO	000625-50-3	9
5		Silane, ethyltrimethyl-	102	C5H14Si	003439-38-1	9



Data Path : Z:\HPCHEM1\BNA\_G\DATA\BG012015\  
 Data File : BG015904.D  
 Acq On : 20 Jan 2015 22:45  
 Operator : TP/IZ  
 Sample : G1101-05  
 Misc :  
 ALS Vial : 18 Sample Multiplier: 1

Instrument :  
 BNA\_G  
 ClientSampleID :  
 TE-MW-2-26

Quant Method : Z:\HPCHEM1\BNA\_G\METHODS\8270-BG012015.M  
 Quant Title : ASP BNA STANDARDS FOR 5 POINT CALIBRATION

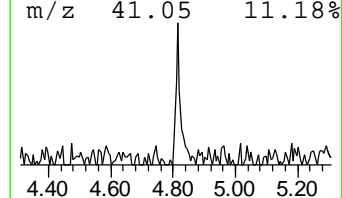
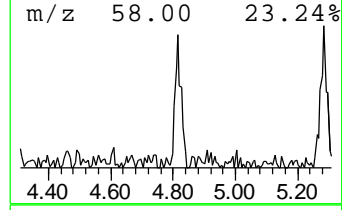
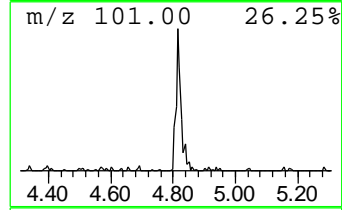
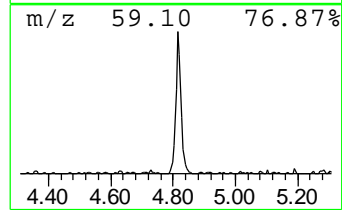
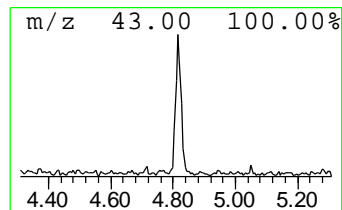
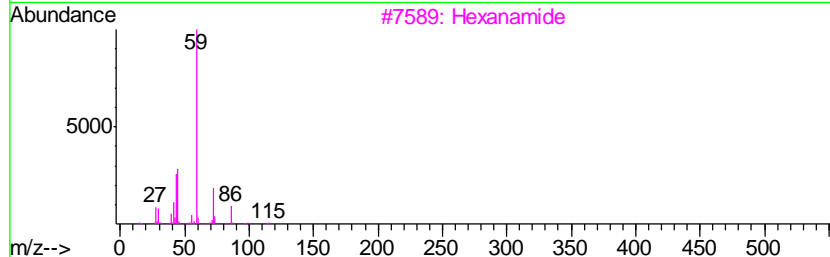
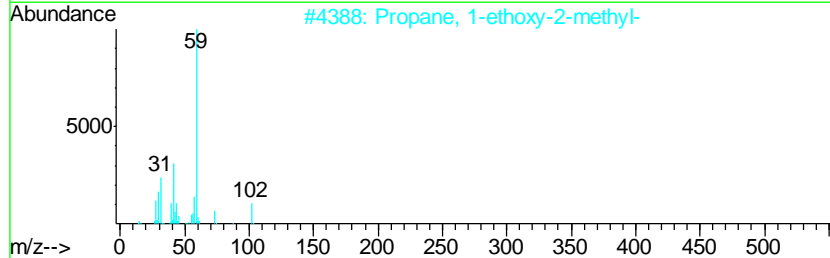
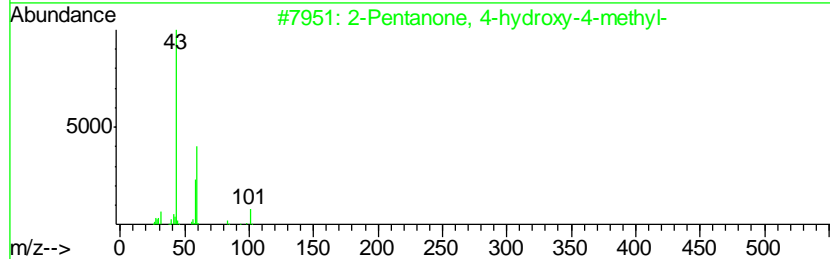
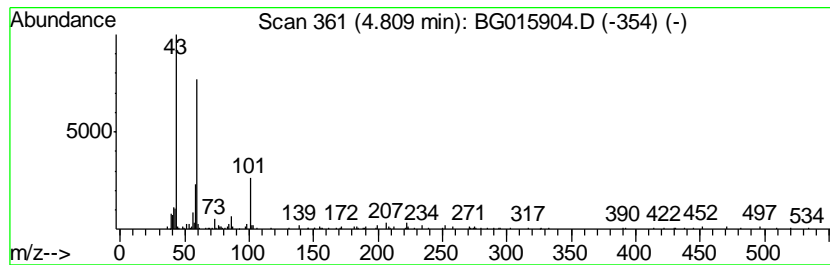
TIC Library : C:\DATABASE\NIST02.L  
 TIC Integration Parameters: LSCINT.P

\*\*\*\*\*  
 Peak Number 3 2-Pentanone, 4-hydroxy-4-me... Concentration Rank 8

R.T.	EstConc	Area	Relative to ISTD	R.T.
4.81	4.79 ng	230920	1,4-Dichlorobenzene-d4	7.69

Hit#	of	Tentative ID	MW	MolForm	CAS#	Qual
1	5	2-Pentanone, 4-hydroxy-4-methyl-	116	C6H12O2	000123-42-2	59
2		Propane, 1-ethoxy-2-methyl-	102	C6H14O	000627-02-1	38
3		Hexanamide	115	C6H13NO	000628-02-4	23
4		(+)-4-Amino-4,5-dihydro-2(3H)-f...	101	C4H7NO2	016504-58-8	12
5		Guanidine	59	CH5N3	000113-00-8	9



Data Path : Z:\HPCHEM1\BNA\_G\DATA\BG012015\  
 Data File : BG015904.D  
 Acq On : 20 Jan 2015 22:45  
 Operator : TP/IZ  
 Sample : G1101-05  
 Misc :  
 ALS Vial : 18 Sample Multiplier: 1

Instrument :  
 BNA\_G  
 ClientSampleID :  
 TE-MW-2-26

Quant Method : Z:\HPCHEM1\BNA\_G\METHODS\8270-BG012015.M  
 Quant Title : ASP BNA STANDARDS FOR 5 POINT CALIBRATION

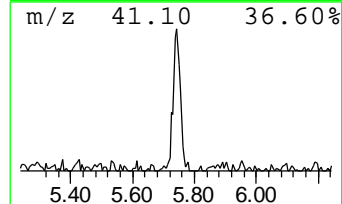
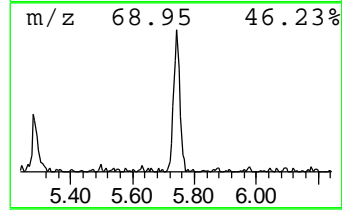
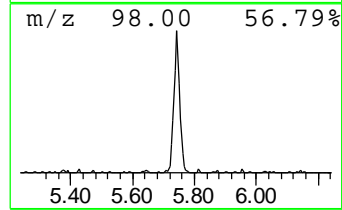
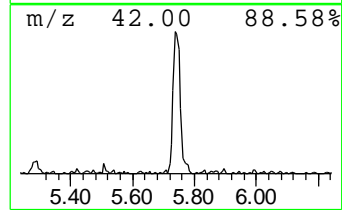
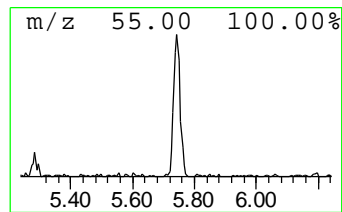
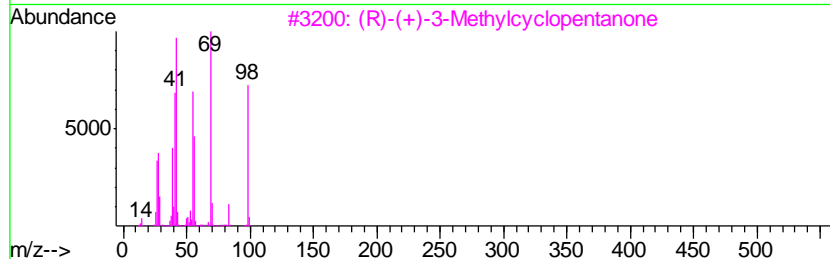
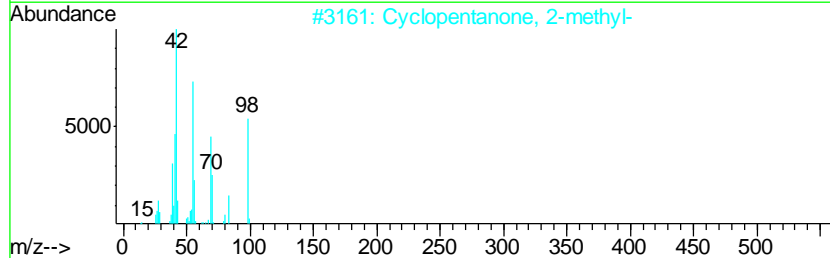
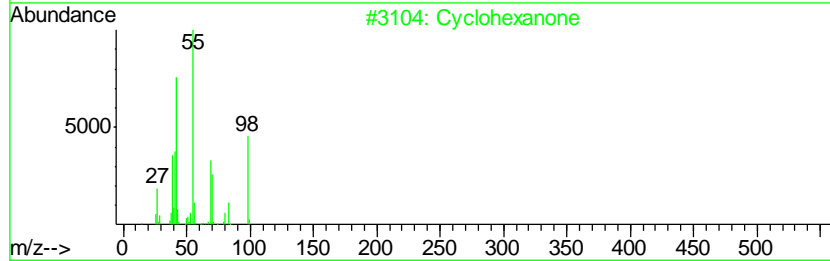
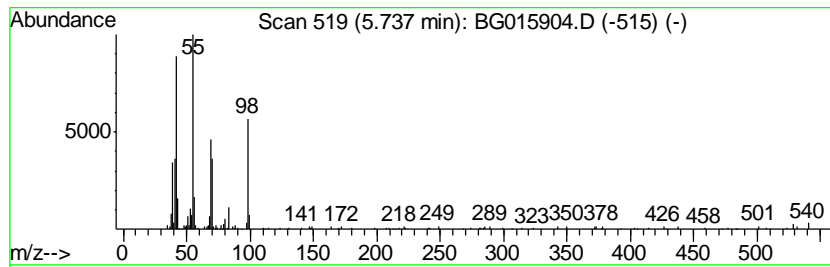
TIC Library : C:\DATABASE\NIST02.L  
 TIC Integration Parameters: LSCINT.P

\*\*\*\*\*  
 Peak Number 4 Cyclohexanone Concentration Rank 7

R.T.	EstConc	Area	Relative to ISTD	R.T.
5.74	6.38 ng	307894	1,4-Dichlorobenzene-d4	7.69

Hit#	of	Tentative ID	MW	MolForm	CAS#	Qual
1	5	Cyclohexanone	98	C6H10O	000108-94-1	90
2		Cyclopentanone, 2-methyl-	98	C6H10O	001120-72-5	78
3		(R)-(+)-3-Methylcyclopentanone	98	C6H10O	006672-30-6	53
4		6-Oxa-bicyclo[3.1.0]hexan-3-one	98	C5H6O2	074017-10-0	53
5		1-Pentene	70	C5H10	000109-67-1	50



Data Path : Z:\HPCHEM1\BNA\_G\DATA\BG012015\  
 Data File : BG015904.D  
 Acq On : 20 Jan 2015 22:45  
 Operator : TP/IZ  
 Sample : G1101-05  
 Misc :  
 ALS Vial : 18 Sample Multiplier: 1

Instrument :  
 BNA\_G  
 ClientSampleID :  
 TE-MW-2-26

Quant Method : Z:\HPCHEM1\BNA\_G\METHODS\8270-BG012015.M  
 Quant Title : ASP BNA STANDARDS FOR 5 POINT CALIBRATION

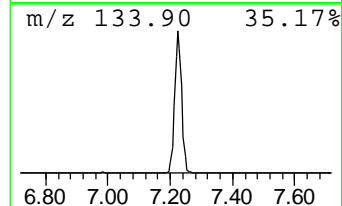
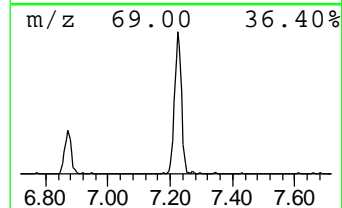
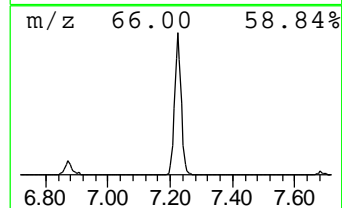
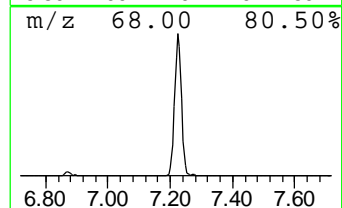
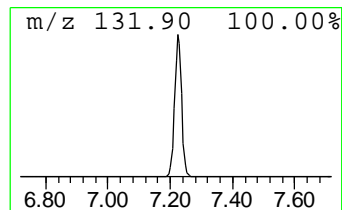
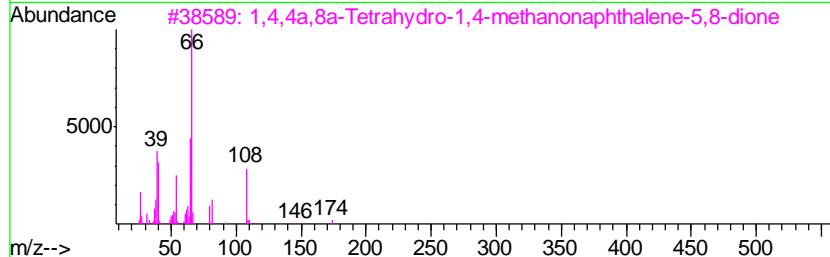
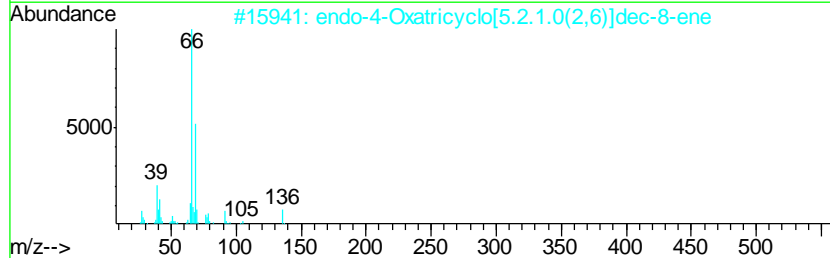
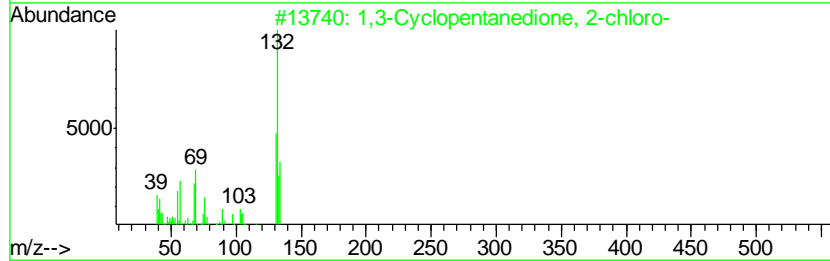
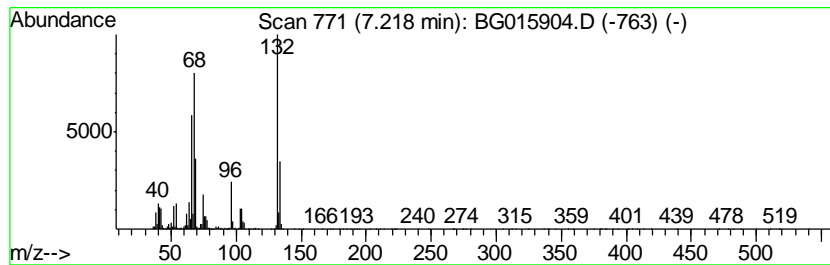
TIC Library : C:\DATABASE\NIST02.L  
 TIC Integration Parameters: LSCINT.P

\*\*\*\*\*  
 Peak Number 5 unknown7.22 Concentration Rank 2

R.T.	EstConc	Area	Relative to ISTD	R.T.
7.22	91.27 ng	4404040	1,4-Dichlorobenzene-d4	7.69

Hit#	of	Tentative ID	MW	MolForm	CAS#	Qual
1	5	1,3-Cyclopentanedione, 2-chloro-	132	C5H5ClO2	014203-19-1	25
2		endo-4-Oxatricyclo[5.2.1.0(2,6)]...	136	C9H12O	001528-23-0	16
3		1,4,4a,8a-Tetrahydro-1,4-methano...	174	C11H10O2	001200-89-1	12
4		3-Oxabicyclo[3.2.0]hept-6-ene-2,...	138	C7H6O3	064197-88-2	12
5		1-Penten-3-yne	66	C5H6	000646-05-9	12



Data Path : Z:\HPCHEM1\BNA\_G\DATA\BG012015\  
 Data File : BG015904.D  
 Acq On : 20 Jan 2015 22:45  
 Operator : TP/IZ  
 Sample : G1101-05  
 Misc :  
 ALS Vial : 18 Sample Multiplier: 1

Instrument :  
 BNA\_G  
 ClientSampleID :  
 TE-MW-2-26

Quant Method : Z:\HPCHEM1\BNA\_G\METHODS\8270-BG012015.M  
 Quant Title : ASP BNA STANDARDS FOR 5 POINT CALIBRATION

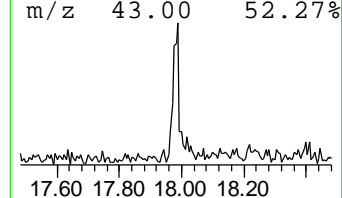
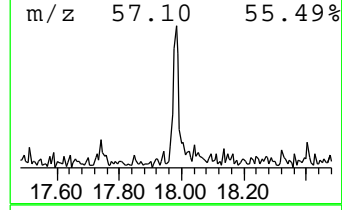
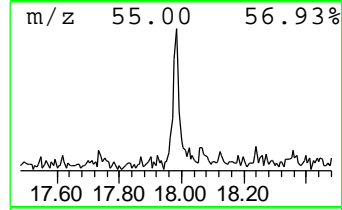
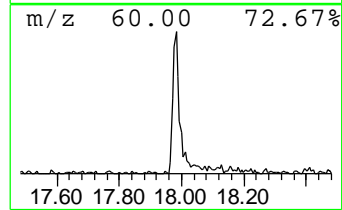
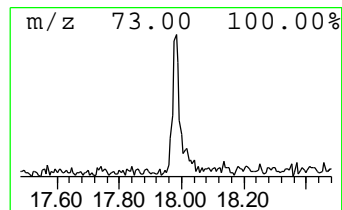
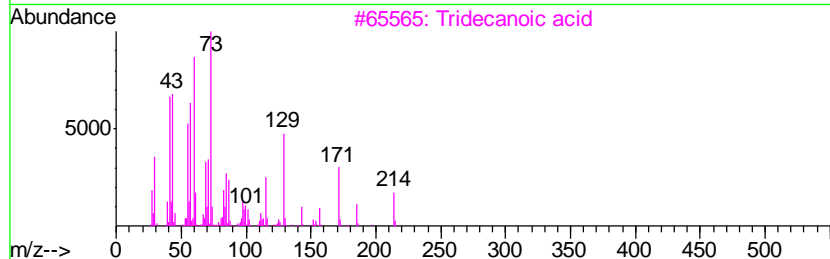
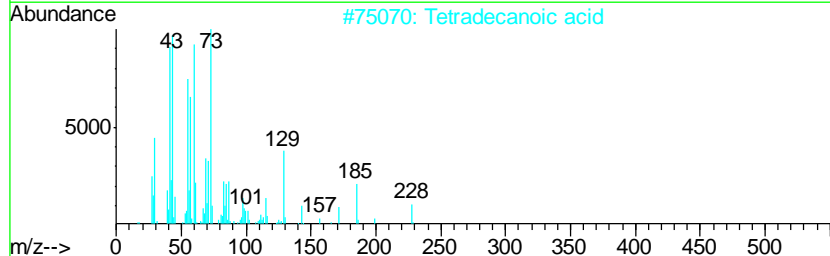
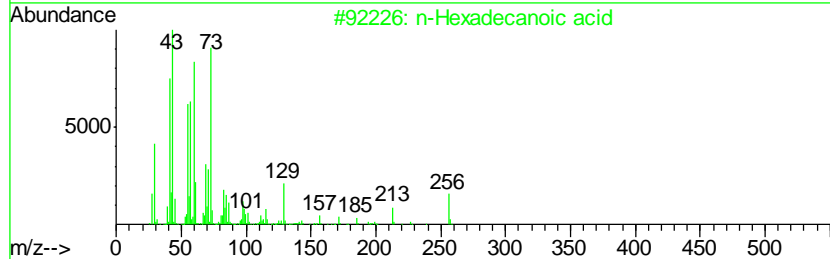
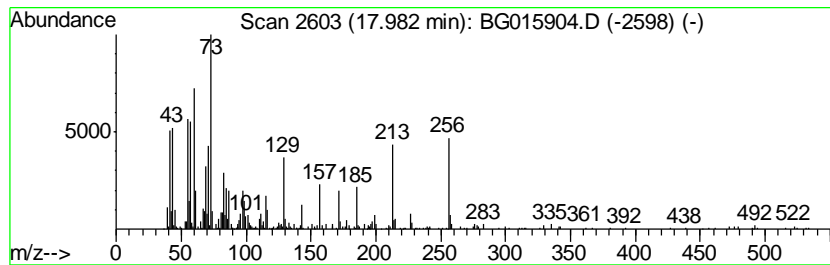
TIC Library : C:\DATABASE\NIST02.L  
 TIC Integration Parameters: LSCINT.P

\*\*\*\*\*  
 Peak Number 7 n-Hexadecanoic acid Concentration Rank 9

R.T.	EstConc	Area	Relative to ISTD	R.T.
17.98	4.33 ng	616676	Phenanthrene-d10	17.08

Hit#	of	Tentative ID	MW	MolForm	CAS#	Qual
1	5	n-Hexadecanoic acid	256	C16H32O2	000057-10-3	89
2		Tetradecanoic acid	228	C14H28O2	000544-63-8	42
3		Tridecanoic acid	214	C13H26O2	000638-53-9	38
4		Pentadecanoic acid	242	C15H30O2	001002-84-2	38
5		Dodecanoic acid	200	C12H24O2	000143-07-7	27



Data Path : Z:\HPCHEM1\BNA\_G\DATA\BG012015\  
 Data File : BG015904.D  
 Acq On : 20 Jan 2015 22:45  
 Operator : TP/IZ  
 Sample : G1101-05  
 Misc :  
 ALS Vial : 18 Sample Multiplier: 1

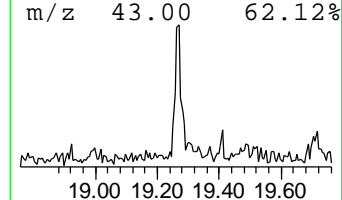
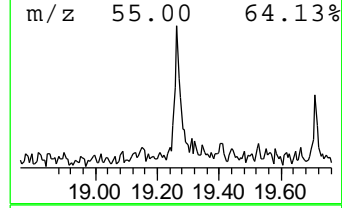
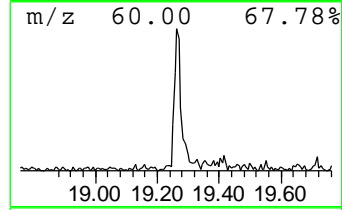
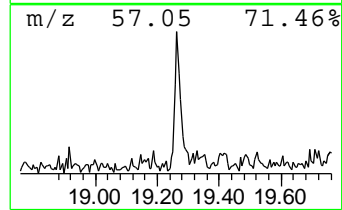
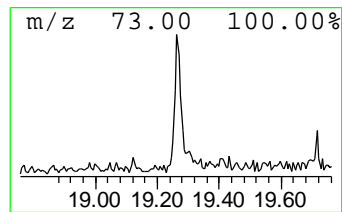
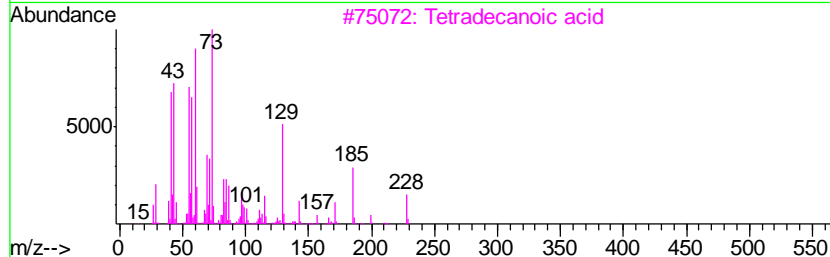
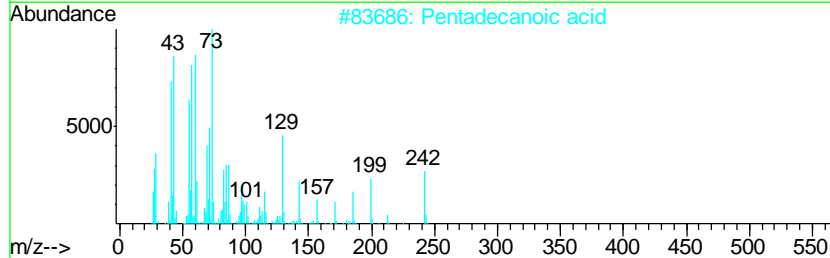
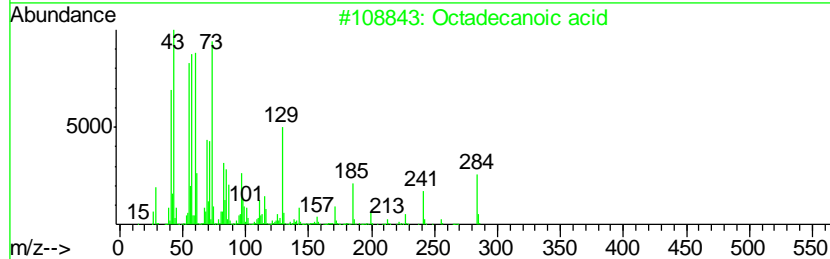
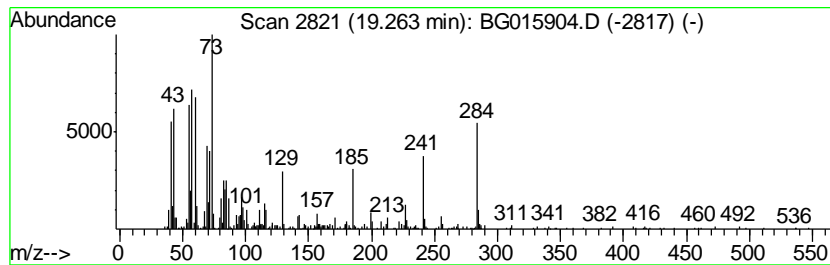
Instrument :  
 BNA\_G  
 ClientSampleID :  
 TE-MW-2-26

Quant Method : Z:\HPCHEM1\BNA\_G\METHODS\8270-BG012015.M  
 Quant Title : ASP BNA STANDARDS FOR 5 POINT CALIBRATION

TIC Library : C:\DATABASE\NIST02.L  
 TIC Integration Parameters: LSCINT.P

\*\*\*\*\*  
 Peak Number 8 Octadecanoic acid Concentration Rank 10

R.T.	EstConc	Area	Relative to ISTD	R.T.		
19.26	3.63 ng	668346	Chrysene-d12	21.27		
Hit# of	5	Tentative ID	MW	MolForm	CAS#	Qual
1		Octadecanoic acid	284	C18H36O2	000057-11-4	83
2		Pentadecanoic acid	242	C15H30O2	001002-84-2	53
3		Tetradecanoic acid	228	C14H28O2	000544-63-8	38
4		Dodecanoic acid	200	C12H24O2	000143-07-7	35
5		n-Hexadecanoic acid	256	C16H32O2	000057-10-3	30





Data Path : Z:\HPCHEM1\BNA\_G\DATA\BG012015\  
 Data File : BG015904.D  
 Acq On : 20 Jan 2015 22:45  
 Operator : TP/IZ  
 Sample : G1101-05  
 Misc :  
 ALS Vial : 18 Sample Multiplier: 1

Instrument :  
 BNA\_G  
 ClientSampleID :  
 TE-MW-2-26

Quant Method : Z:\HPCHEM1\BNA\_G\METHODS\8270-BG012015.M  
 Quant Title : ASP BNA STANDARDS FOR 5 POINT CALIBRATION

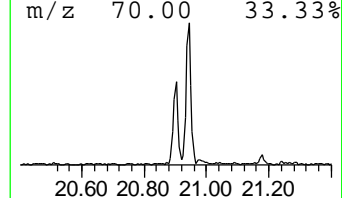
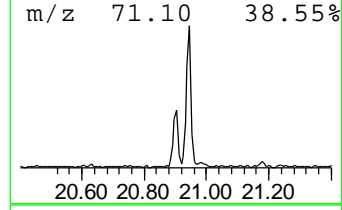
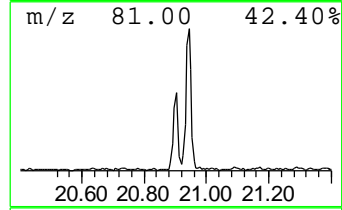
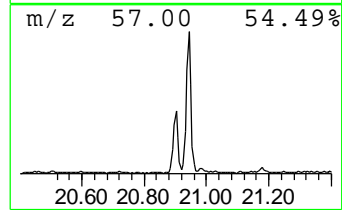
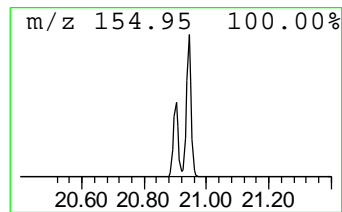
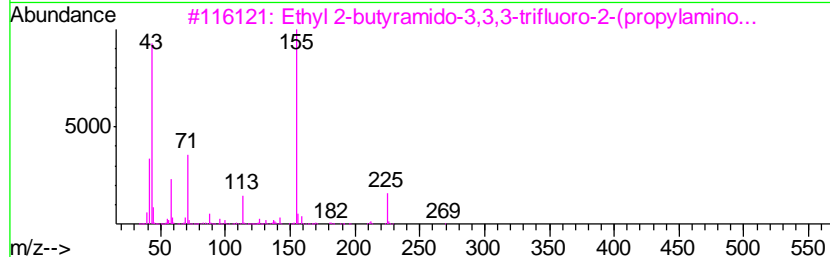
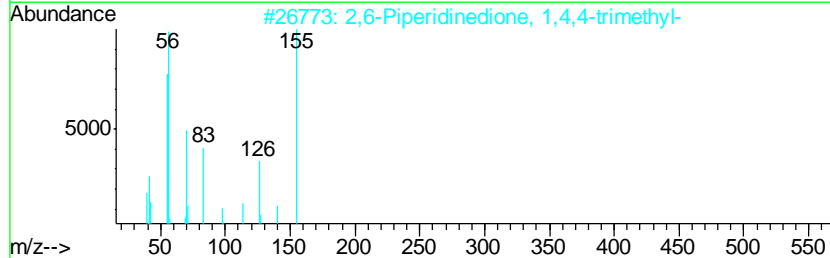
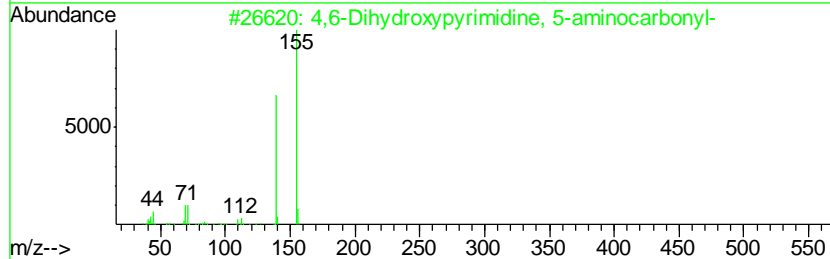
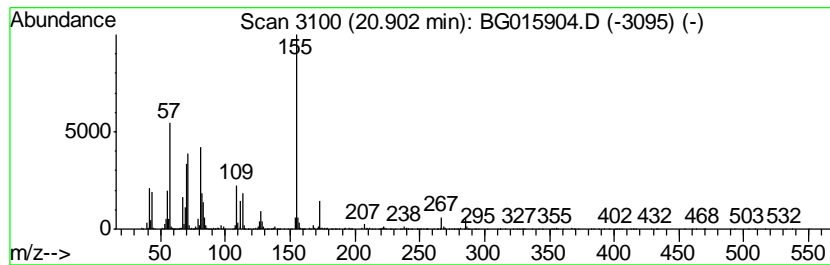
TIC Library : C:\DATABASE\NIST02.L  
 TIC Integration Parameters: LSCINT.P

\*\*\*\*\*  
 Peak Number 9 unknown20.90 Concentration Rank 6

R.T.	EstConc	Area	Relative to ISTD	R.T.
20.90	9.85 ng	1815370	Chrysene-d12	21.27

Hit#	of	Tentative ID	MW	MolForm	CAS#	Qual
1	5	4,6-Dihydroxypyrimidine, 5-amino...	155	C5H5N3O3	001074-97-1	35
2		2,6-Piperidinedione, 1,4,4-trime...	155	C8H13NO2	025115-67-7	28
3		Ethyl 2-butyramido-3,3,3-trifluo...	298	C12H21F3N2O3	1000224-23-4	25
4		Thiazolidine, 2-(2-furyl)-	155	C7H9NOS	051859-60-0	23
5		1,2-Cyclohexanedicarboxylic acid...	452	C28H52O4	010593-99-4	23



Data Path : Z:\HPCHEM1\BNA\_G\DATA\BG012015\  
 Data File : BG015904.D  
 Acq On : 20 Jan 2015 22:45  
 Operator : TP/IZ  
 Sample : G1101-05  
 Misc :  
 ALS Vial : 18 Sample Multiplier: 1

Instrument :  
 BNA\_G  
 ClientSampleID :  
 TE-MW-2-26

Quant Method : Z:\HPCHEM1\BNA\_G\METHODS\8270-BG012015.M  
 Quant Title : ASP BNA STANDARDS FOR 5 POINT CALIBRATION

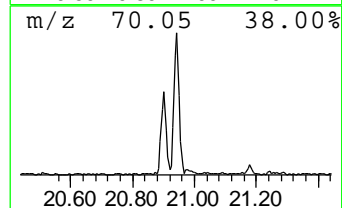
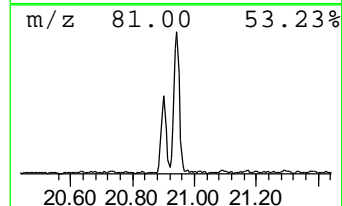
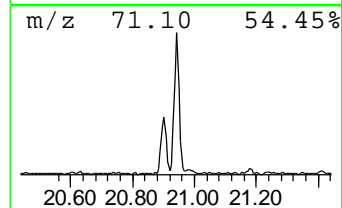
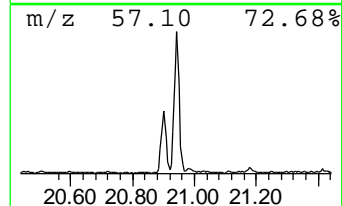
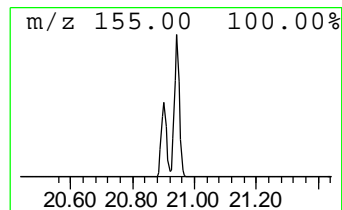
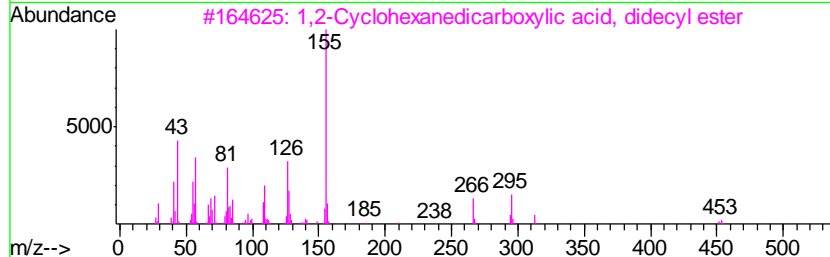
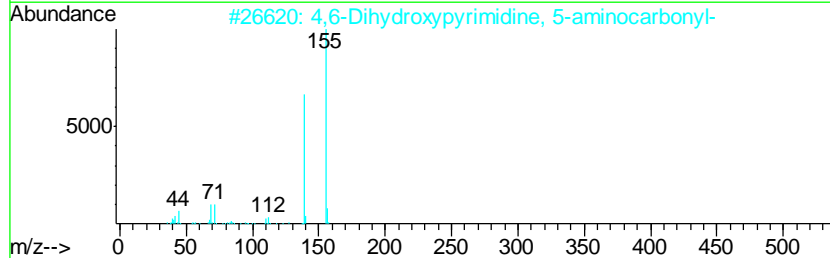
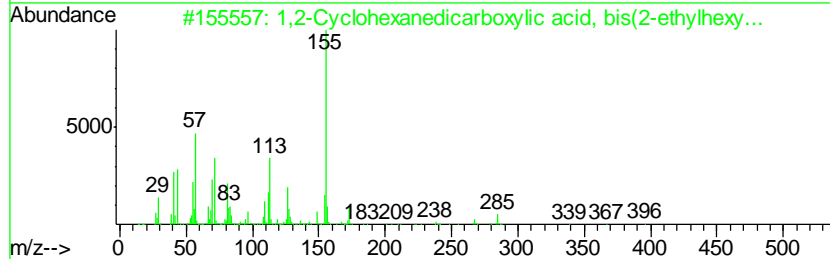
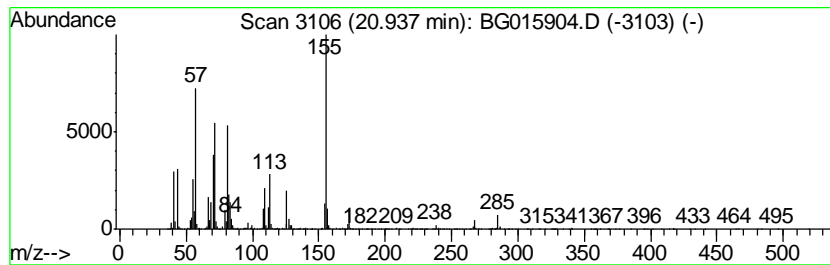
TIC Library : C:\DATABASE\NIST02.L  
 TIC Integration Parameters: LSCINT.P

\*\*\*\*\*  
 Peak Number 10 1,2-Cyclohexanedicarboxylic... Concentration Rank 5

R.T.	EstConc	Area	Relative to ISTD	R.T.
20.94	19.97 ng	3678790	Chrysene-d12	21.27

Hit#	of	Tentative ID	MW	MolForm	CAS#	Qual
1	5	1,2-Cyclohexanedicarboxylic acid...	396	C24H44O4	000084-71-9	83
2		4,6-Dihydropyrimidine, 5-amino...	155	C5H5N3O3	001074-97-1	38
3		1,2-Cyclohexanedicarboxylic acid...	452	C28H52O4	010593-99-4	37
4		Ethyl 4-amino-1-piperidinecarbox...	172	C8H16N2O2	058859-46-4	35
5		Cyclohexanol, 1-butyl-4-(1,1-dim...	212	C14H28O	053188-79-7	32



Data Path : Z:\HPCHEM1\BNA\_G\DATA\BG012015\  
Data File : BG015904.D  
Acq On : 20 Jan 2015 22:45  
Operator : TP/IZ  
Sample : G1101-05  
Misc :  
ALS Vial : 18 Sample Multiplier: 1

Instrument :  
BNA\_G  
ClientSampleId :  
TE-MW-2-26

Quant Method : Z:\HPCHEM1\BNA\_G\METHODS\8270-BG012015.M  
Quant Title : ASP BNA STANDARDS FOR 5 POINT CALIBRATION

TIC Library : C:\DATABASE\NIST02.L  
TIC Integration Parameters: LSCINT.P

TIC Top Hit name	RT	EstConc	Units	Response	--Internal Standard--			
					#	RT	Resp	Conc
Butane, 2-methoxy...	2.91	130.5	ng	6295260	1	7.69	965018	20.0
2-Pentanone, 4-hy...	4.81	4.8	ng	230920	1	7.69	965018	20.0
Cyclohexanone	5.74	6.4	ng	307894	1	7.69	965018	20.0
unknown7.22	7.22	91.3	ng	4404040	1	7.69	965018	20.0
n-Hexadecanoic acid	17.98	4.3	ng	616676	4	17.08	2851570	20.0
Octadecanoic acid	19.26	3.6	ng	668346	5	21.27	3685080	20.0
unknown20.90	20.90	9.8	ng	1815370	5	21.27	3685080	20.0
1,2-Cyclohexanedi...	20.94	20.0	ng	3678790	5	21.27	3685080	20.0