

Data Path : Z:\HPCHEM1\BNA_G\DATA\BG012017\
 Data File : BG025536.D
 Acq On : 20 Jan 2017 13:19
 Operator : UM/SJ
 Sample : PB96135BL
 Misc :
 ALS Vial : 4 Sample Multiplier: 1

Instrument :
 BNA_G
 ClientSampleId :
 PB96135BL

Quant Time: Jan 21 00:08:06 2017
 Quant Method : Z:\HPCHEM1\BNA_G\METHODS\8270-BG122116.M
 Quant Title : ASP BNA STANDARDS FOR 5 POINT CALIBRATION
 QLast Update : Tue Jan 10 11:26:22 2017
 Response via : Initial Calibration

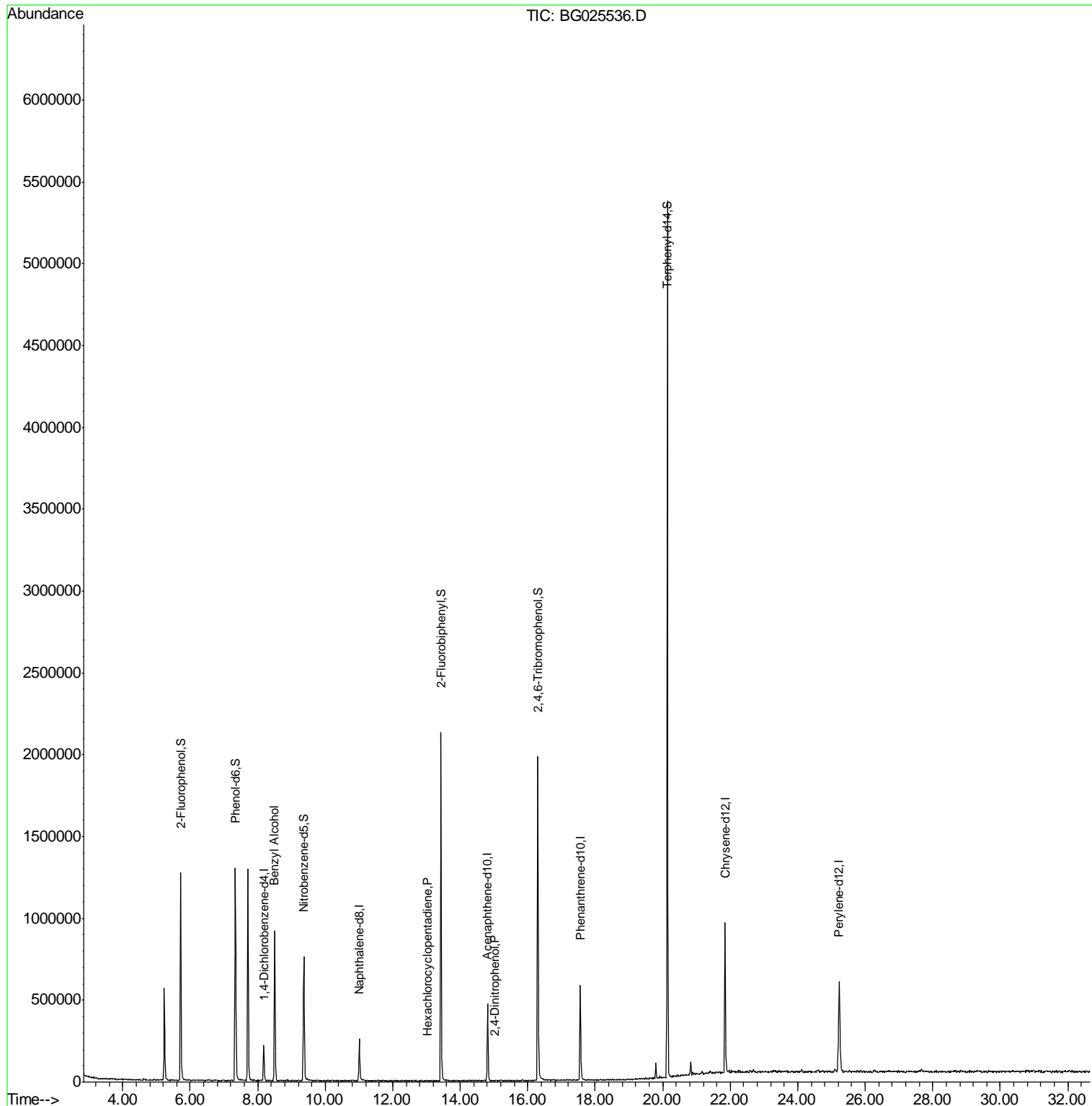
Internal Standards	R.T.	QIon	Response	Conc	Units	Dev(Min)
1) 1,4-Dichlorobenzene-d4	8.18	152	54580	20.00	ng	-0.02
21) Naphthalene-d8	11.01	136	214041	20.00	ng	-0.02
38) Acenaphthene-d10	14.81	164	169421	20.00	ng	-0.01
63) Phenanthrene-d10	17.56	188	391123	20.00	ng	-0.02
75) Chrysene-d12	21.85	240	644392	20.00	ng	-0.02
86) Perylene-d12	25.23	264	695258	20.00	ng	-0.04
System Monitoring Compounds						
5) 2-Fluorophenol	5.72	112	484150	161.24	ng	-0.02
7) Phenol-d6	7.34	99	670220	158.48	ng	-0.02
23) Nitrobenzene-d5	9.37	82	498808	102.95	ng	-0.02
41) 2,4,6-Tribromophenol	16.30	330	409135	150.00	ng	-0.02
44) 2-Fluorobiphenyl	13.43	172	1063812	101.66	ng	-0.02
78) Terphenyl-d14	20.14	244	2232878	91.87	ng	-0.02
Target Compounds						Qvalue
15) Benzyl Alcohol	8.50	79	9659	2.39	ng	# 78
40) Hexachlorocyclopentadiene	13.04	237	192	8.59	ng	# 29
53) 2,4-Dinitrophenol	15.01	184	164	5.16	ng	# 15

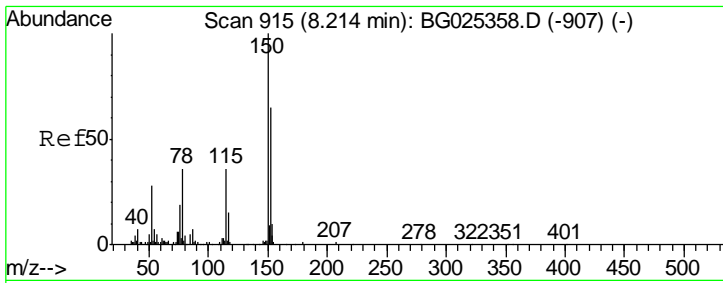
(#) = qualifier out of range (m) = manual integration (+) = signals summed

Data Path : Z:\HPCHEM1\BNA_G\DATA\BG012017\
 Data File : BG025536.D
 Acq On : 20 Jan 2017 13:19
 Operator : UM/SJ
 Sample : PB96135BL
 Misc :
 ALS Vial : 4 Sample Multiplier: 1

Instrument :
 BNA_G
 ClientSampleId :
 PB96135BL

Quant Time: Jan 21 00:08:06 2017
 Quant Method : Z:\HPCHEM1\BNA_G\METHODS\8270-BG122116.M
 Quant Title : ASP BNA STANDARDS FOR 5 POINT CALIBRATION
 QLast Update : Tue Jan 10 11:26:22 2017
 Response via : Initial Calibration

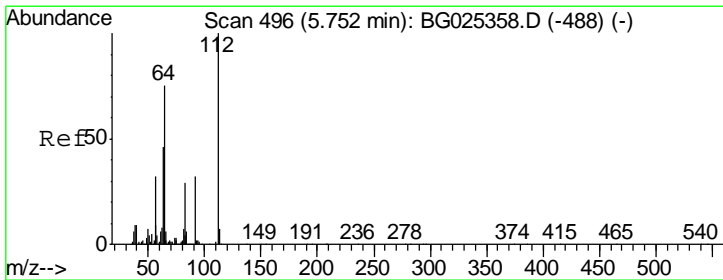
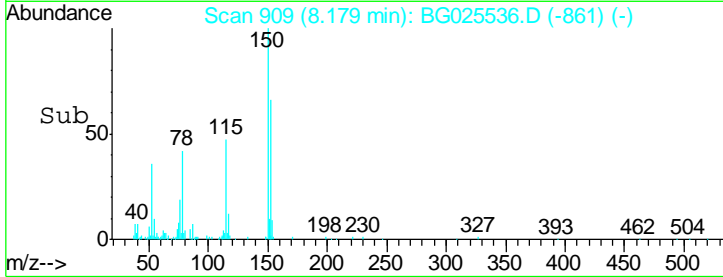
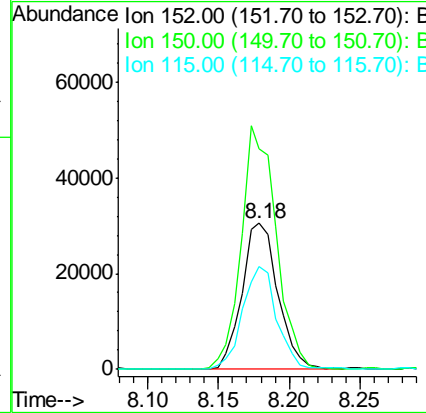
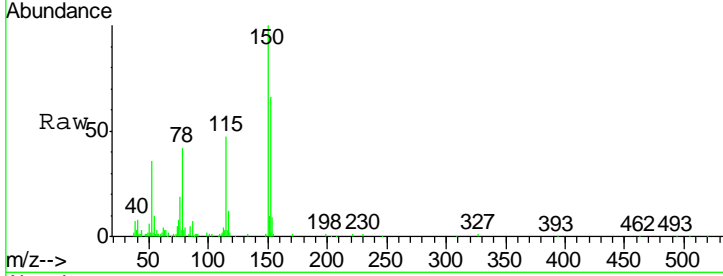




#1
 1,4-Dichlorobenzene-d4
 Concen: 20.00 ng
 RT: 8.18 min Scan# 909
 Delta R.T. -0.02 min
 Lab File: BG025536.D
 Acq: 20 Jan 2017 13:19

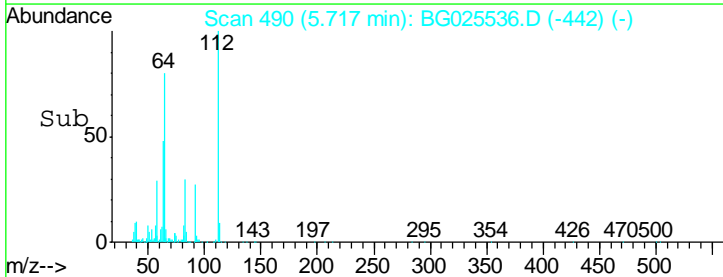
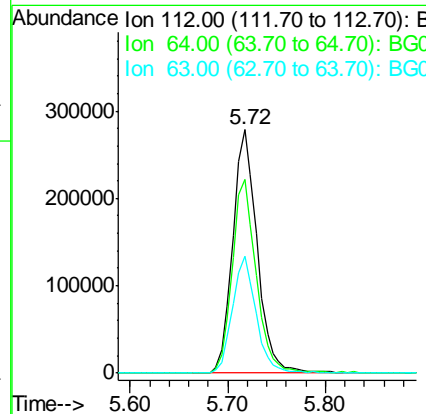
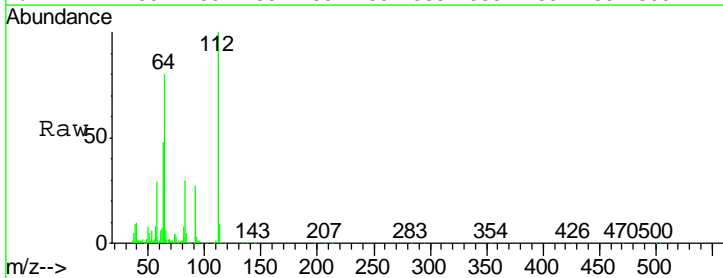
Instrument :
 BNA_G
 ClientSampled :
 PB96135BL

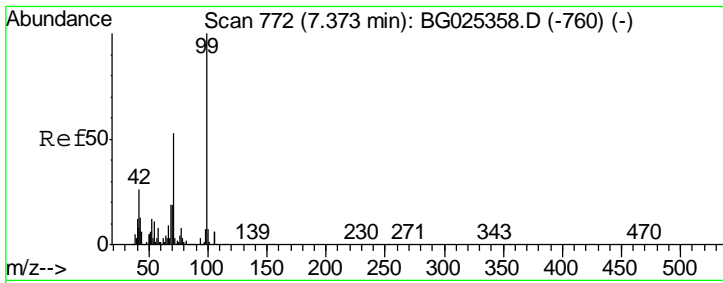
Tgt Ion	Resp	Lower	Upper
152	100		
150	150.9	114.0	171.0
115	70.4	48.1	72.1



#5
 2-Fluorophenol
 Concen: 161.24 ng
 RT: 5.72 min Scan# 490
 Delta R.T. -0.02 min
 Lab File: BG025536.D
 Acq: 20 Jan 2017 13:19

Tgt Ion	Resp	Lower	Upper
112	100		
64	79.7	61.8	92.6
63	47.9	37.2	55.8

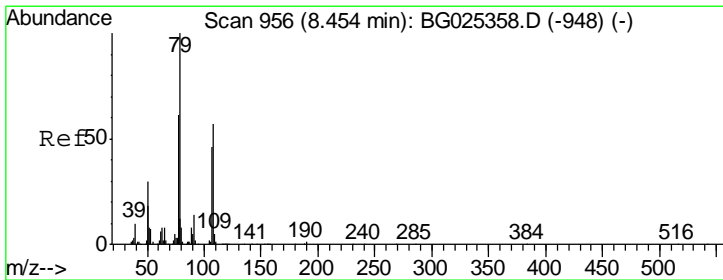
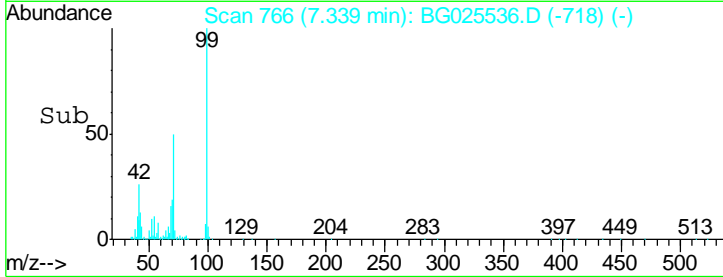
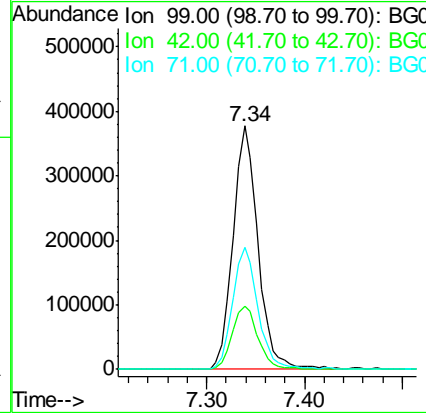
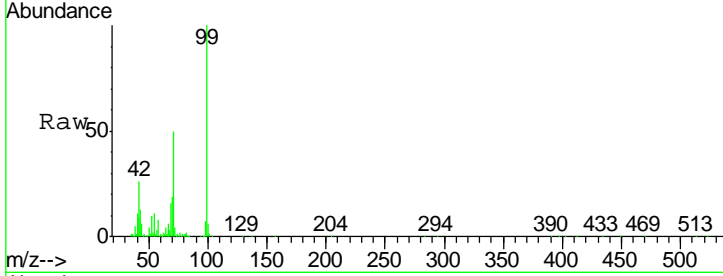




#7
 Phenol-d6
 Concen: 158.48 ng
 RT: 7.34 min Scan# 766
 Delta R.T. -0.02 min
 Lab File: BG025536.D
 Acq: 20 Jan 2017 13:19

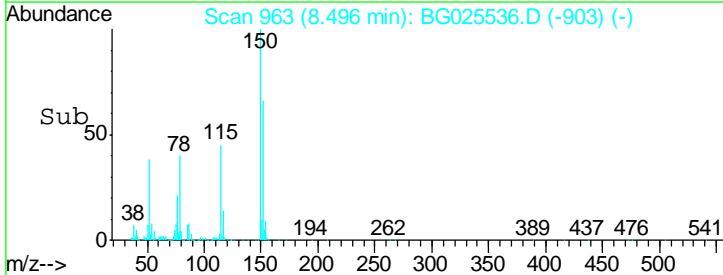
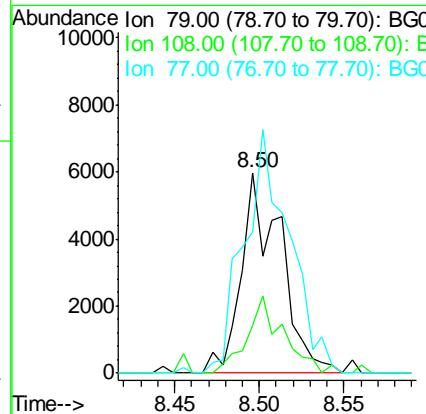
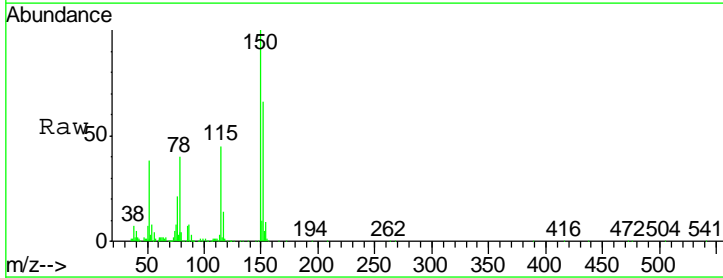
Instrument :
 BNA_G
ClientSampled :
 PB96135BL

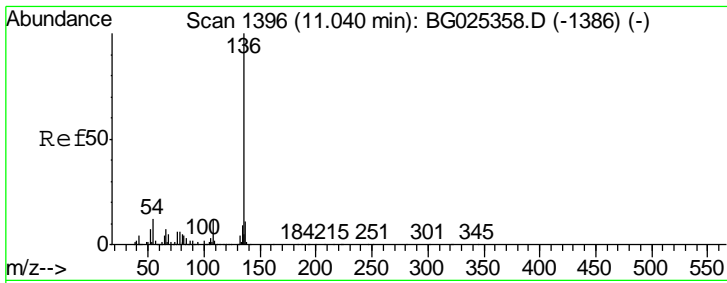
Tgt Ion	Resp	Lower	Upper
99	100		
42	25.7	20.5	30.7
71	49.9	37.6	56.4



#15
 Benzyl Alcohol
 Concen: 2.39 ng
 RT: 8.50 min Scan# 963
 Delta R.T. 0.05 min
 Lab File: BG025536.D
 Acq: 20 Jan 2017 13:19

Tgt Ion	Resp	Lower	Upper
79	100		
108	23.7	45.5	68.3#
77	70.7	54.3	81.5

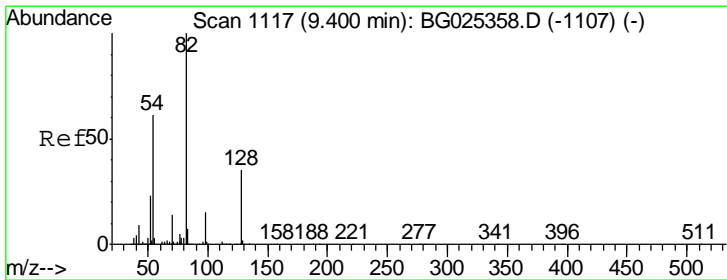
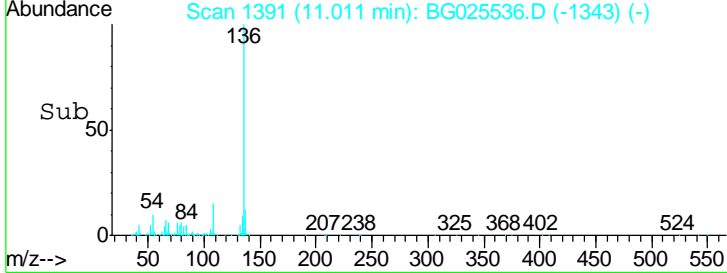
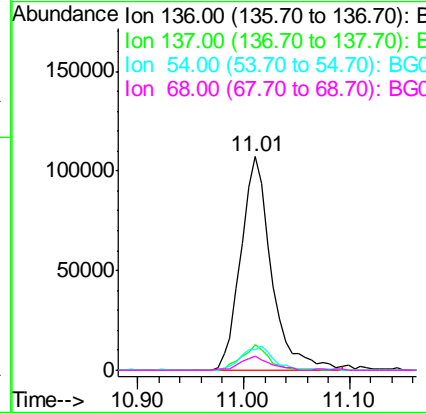
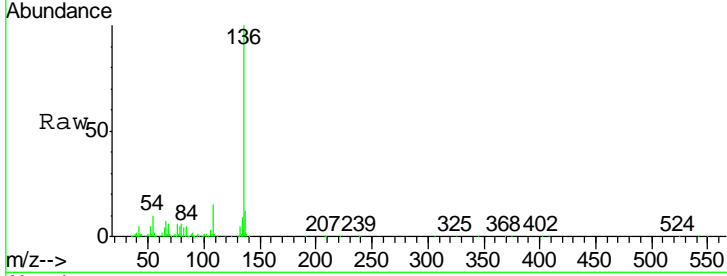




#21
 Naphthalene-d8
 Concen: 20.00 ng
 RT: 11.01 min Scan# 1391
 Delta R.T. -0.02 min
 Lab File: BG025536.D
 Acq: 20 Jan 2017 13:19

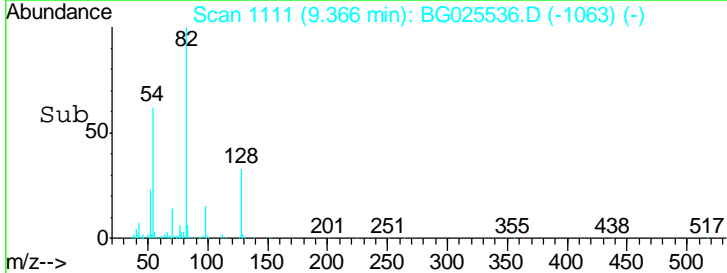
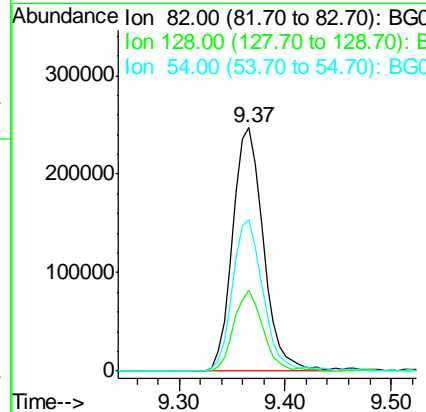
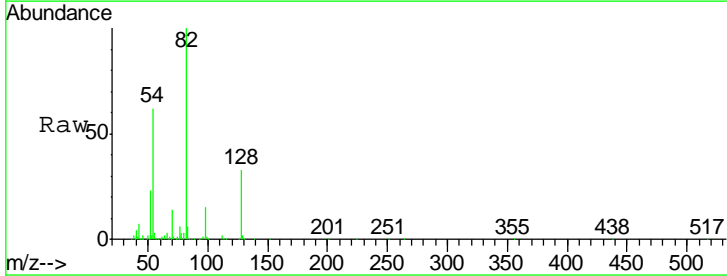
Instrument :
 BNA_G
 ClientSampled :
 PB96135BL

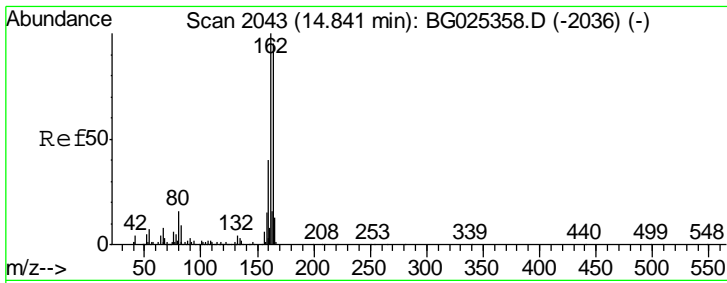
Tgt Ion	Resp	Lower	Upper
136	214041		
137	12.1	8.9	13.3
54	9.8	9.3	13.9
68	6.4	5.1	7.7



#23
 Nitrobenzene-d5
 Concen: 102.95 ng
 RT: 9.37 min Scan# 1111
 Delta R.T. -0.02 min
 Lab File: BG025536.D
 Acq: 20 Jan 2017 13:19

Tgt Ion	Resp	Lower	Upper
82	498808		
128	33.1	26.4	39.6
54	62.1	49.4	74.2

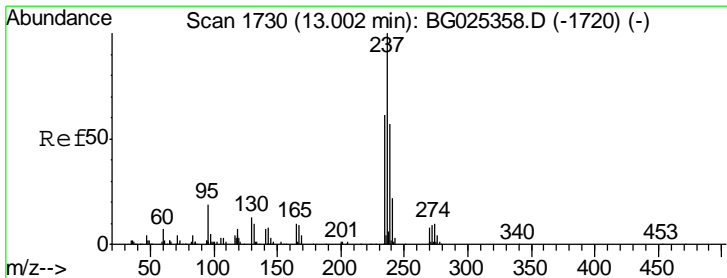
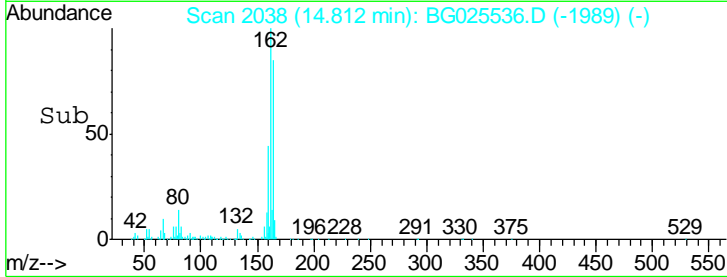
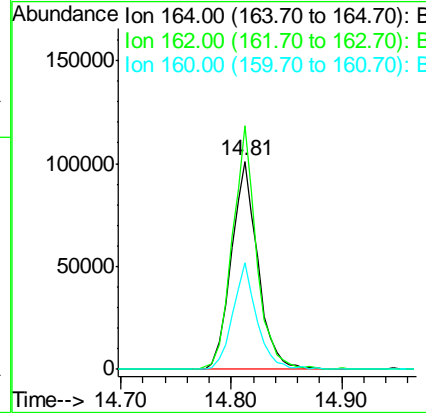
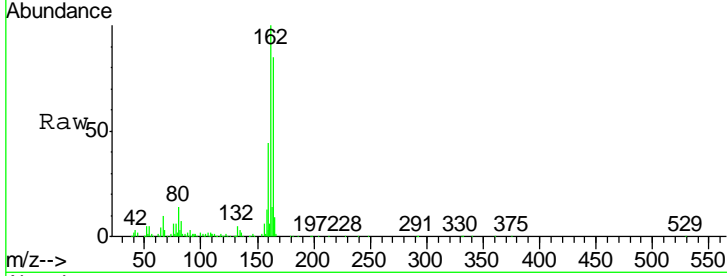




#38
 Acenaphthene-d10
 Concen: 20.00 ng
 RT: 14.81 min Scan# 2038
 Delta R.T. -0.01 min
 Lab File: BG025536.D
 Acq: 20 Jan 2017 13:19

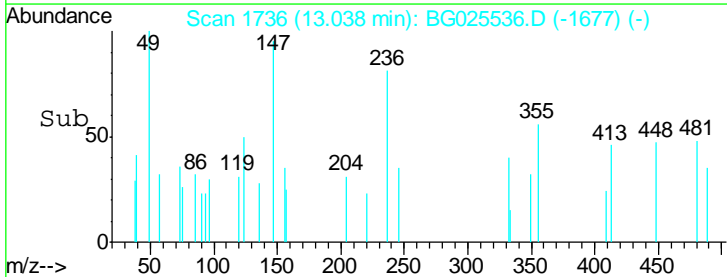
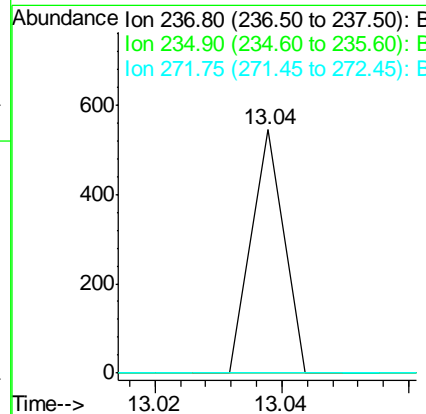
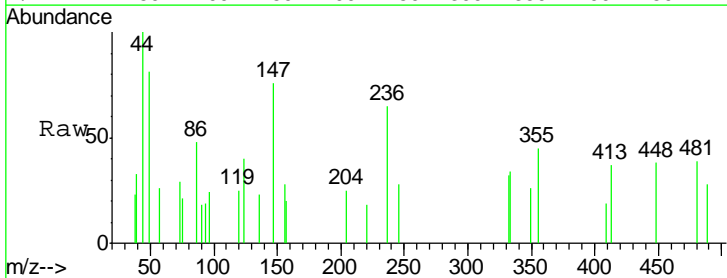
Instrument :
 BNA_G
 ClientSampled :
 PB96135BL

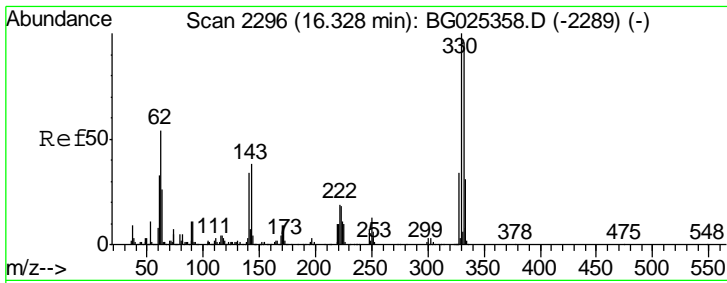
Tgt Ion	Resp	Lower	Upper
164	100		
162	117.0	85.1	127.7
160	51.1	34.7	52.1



#40
 Hexachlorocyclopentadiene
 Concen: 8.59 ng
 RT: 13.04 min Scan# 1736
 Delta R.T. 0.05 min
 Lab File: BG025536.D
 Acq: 20 Jan 2017 13:19

Tgt Ion	Resp	Lower	Upper
237	100		
235	0.0	39.4	79.4#
272	0.0	0.0	32.0

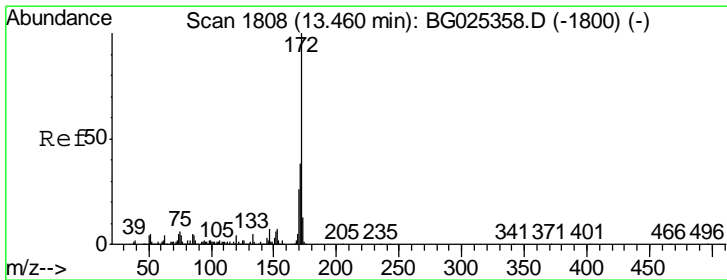
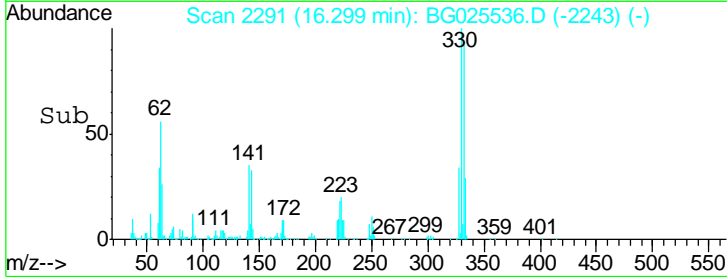
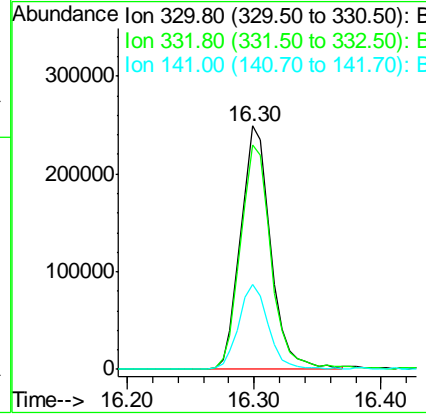
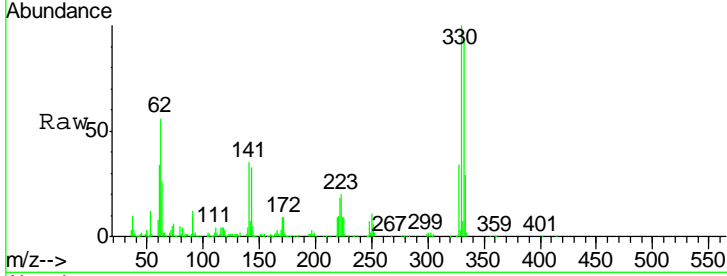




#41
 2,4,6-Tribromophenol
 Concen: 150.00 ng
 RT: 16.30 min Scan# 2291
 Delta R.T. -0.02 min
 Lab File: BG025536.D
 Acq: 20 Jan 2017 13:19

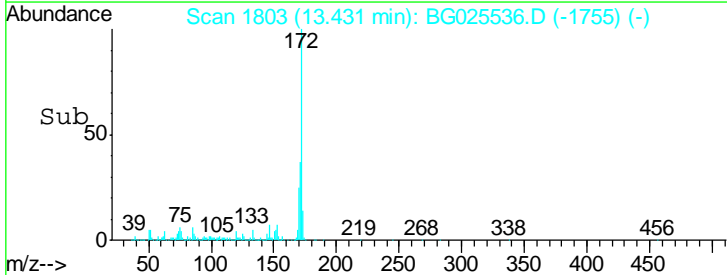
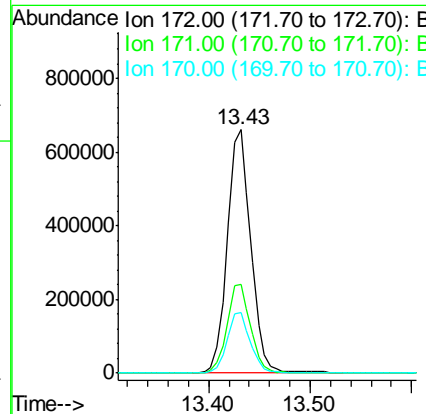
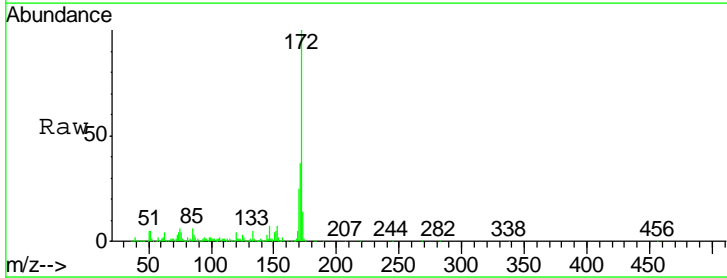
Instrument :
 BNA_G
 ClientSampled :
 PB96135BL

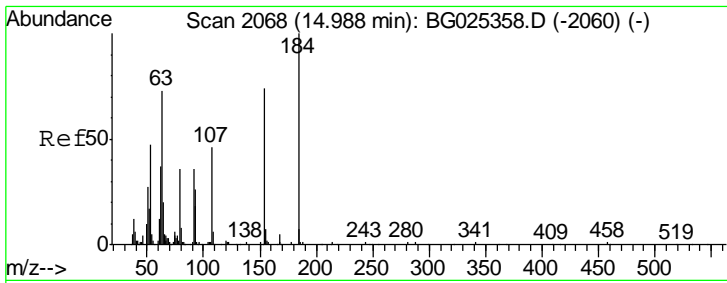
Tgt Ion	Resp	Lower	Upper
330	100		
332	94.7	77.3	115.9
141	34.8	32.1	48.1



#44
 2-Fluorobiphenyl
 Concen: 101.66 ng
 RT: 13.43 min Scan# 1803
 Delta R.T. -0.02 min
 Lab File: BG025536.D
 Acq: 20 Jan 2017 13:19

Tgt Ion	Resp	Lower	Upper
172	100		
171	36.7	32.2	48.2
170	24.7	21.8	32.6

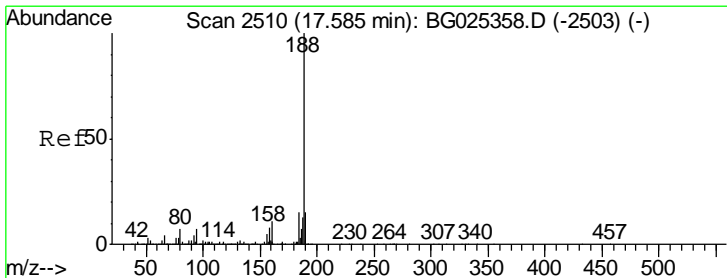
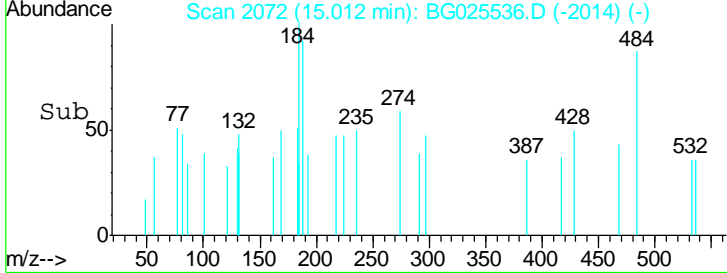
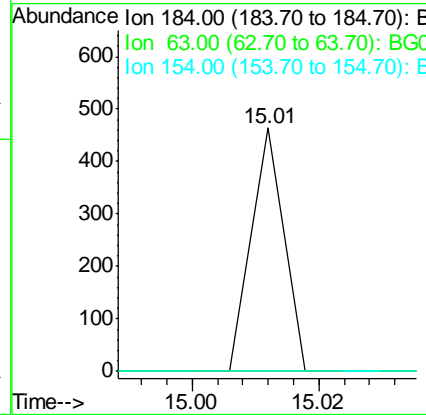
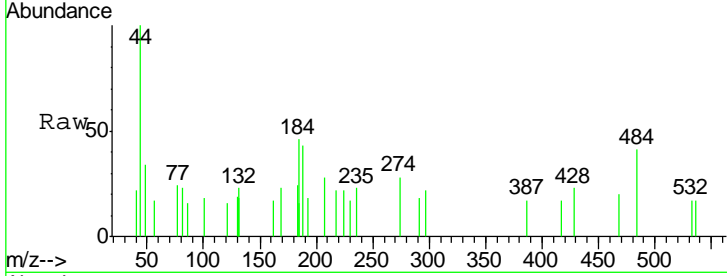




#53
 2,4-Dinitrophenol
 Concen: 5.16 ng
 RT: 15.01 min Scan# 2072
 Delta R.T. 0.04 min
 Lab File: BG025536.D
 Acq: 20 Jan 2017 13:19

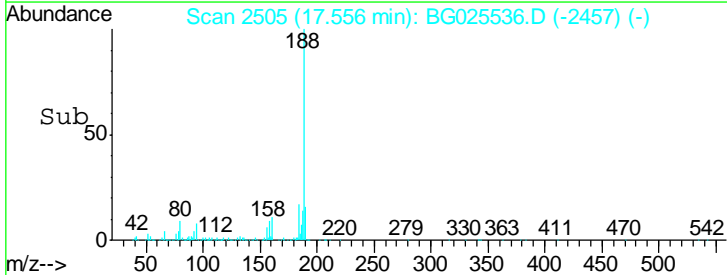
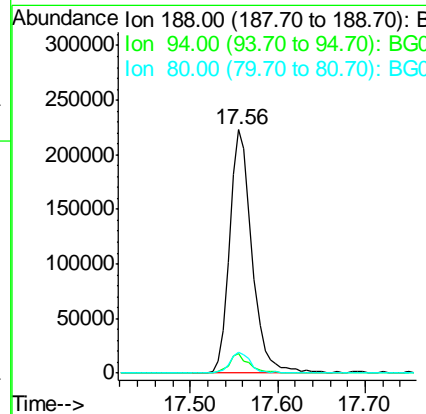
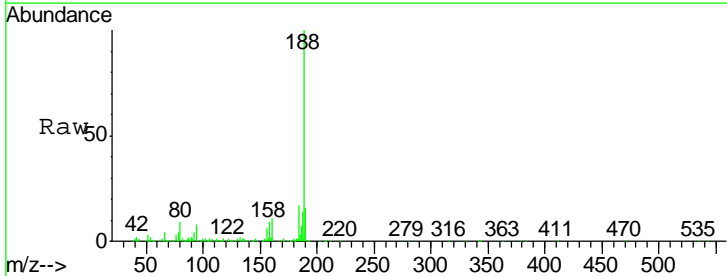
Instrument :
 BNA_G
ClientSampled :
 PB96135BL

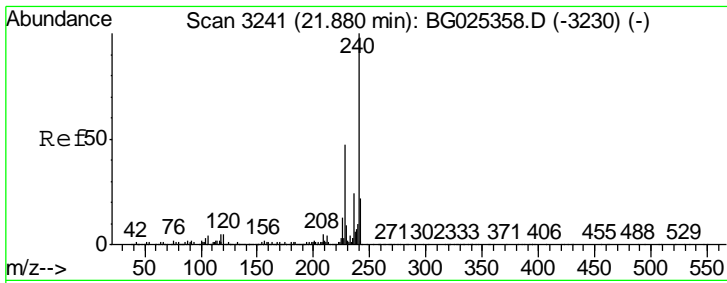
Tgt Ion	Resp	Lower	Upper
184	100		
63	0.0	52.7	79.1#
154	0.0	57.3	85.9#



#63
 Phenanthrene-d10
 Concen: 20.00 ng
 RT: 17.56 min Scan# 2505
 Delta R.T. -0.02 min
 Lab File: BG025536.D
 Acq: 20 Jan 2017 13:19

Tgt Ion	Resp	Lower	Upper
188	100		
94	7.8	5.8	8.8
80	8.6	7.5	11.3

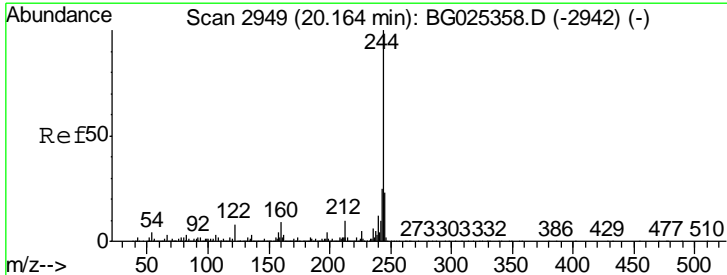
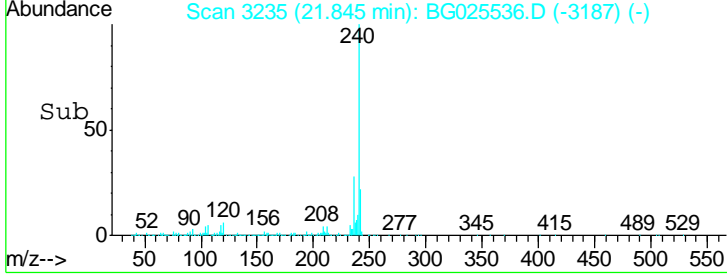
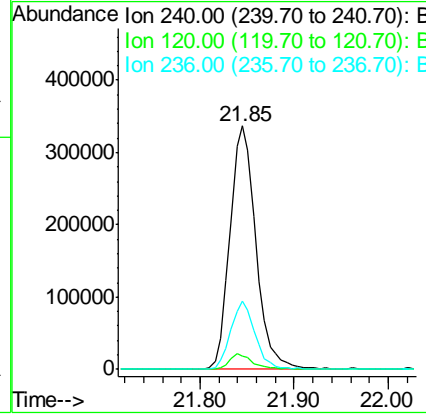
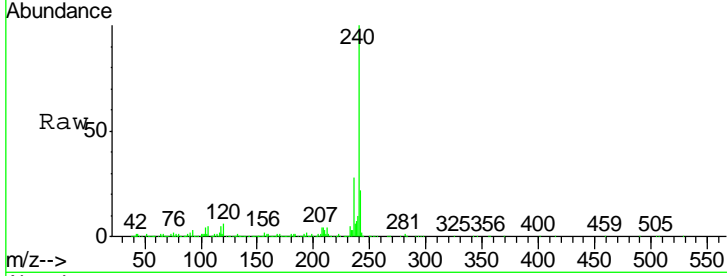




#75
 Chrysene-d12
 Concen: 20.00 ng
 RT: 21.85 min Scan# 3235
 Delta R.T. -0.02 min
 Lab File: BG025536.D
 Acq: 20 Jan 2017 13:19

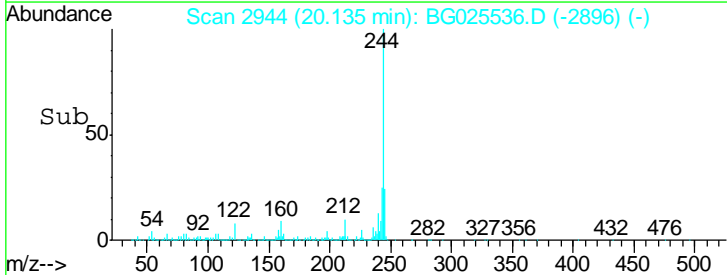
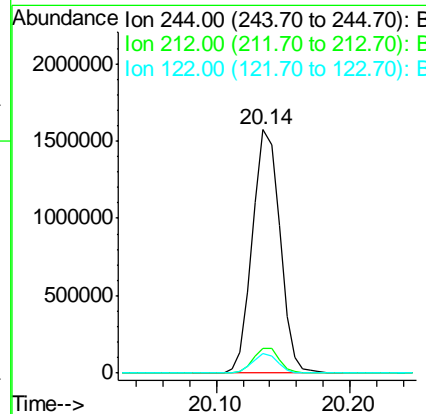
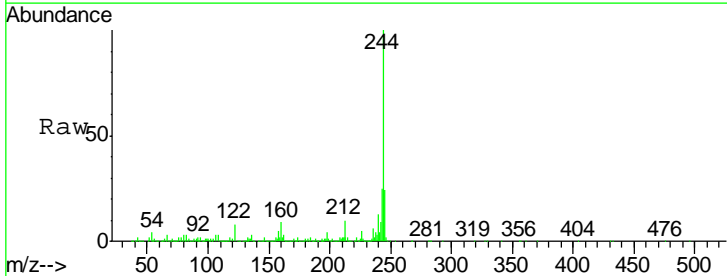
Instrument :
 BNA_G
 ClientSampled :
 PB96135BL

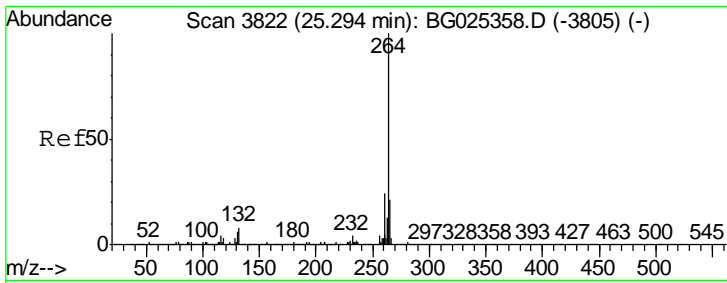
Tgt Ion	Resp	Lower	Upper
240	100		
120	5.6	5.7	8.5#
236	28.1	22.2	33.4



#78
 Terphenyl-d14
 Concen: 91.87 ng
 RT: 20.14 min Scan# 2944
 Delta R.T. -0.02 min
 Lab File: BG025536.D
 Acq: 20 Jan 2017 13:19

Tgt Ion	Resp	Lower	Upper
244	100		
212	10.2	10.0	15.0
122	7.9	8.6	12.8#





#86
 Perylene-d12
 Concen: 20.00 ng
 RT: 25.23 min Scan# 3811
 Delta R.T. -0.04 min
 Lab File: BG025536.D
 Acq: 20 Jan 2017 13:19

Instrument :
 BNA_G
 ClientSampled :
 PB96135BL

Tgt Ion: 264 Resp: 695258

Ion	Ratio	Lower	Upper
264	100		
260	22.0	21.8	32.8
265	20.7	18.2	27.4

