

Data Path : Z:\SVOASRV\HPCHEM1\BNA G\DATA\BG012120\
 Data File : BG044149.D
 Acq On : 22 Jan 2020 1:11
 Operator : JU
 Sample : L1202-02
 Misc :
 ALS Vial : 18 Sample Multiplier: 1

Instrument :
 BNA_G
 ClientSampleId :
 E2-E3-(SETTLED)

Quant Time: Jan 22 07:32:56 2020
 Quant Method : Z:\SVOASRV\HPCHEM1\BNA G\METHODS\8270-BG123019.M
 Quant Title : ASP BNA STANDARDS FOR 5 POINT CALIBRATION
 QLast Update : Tue Dec 31 13:32:23 2019
 Response via : Initial Calibration

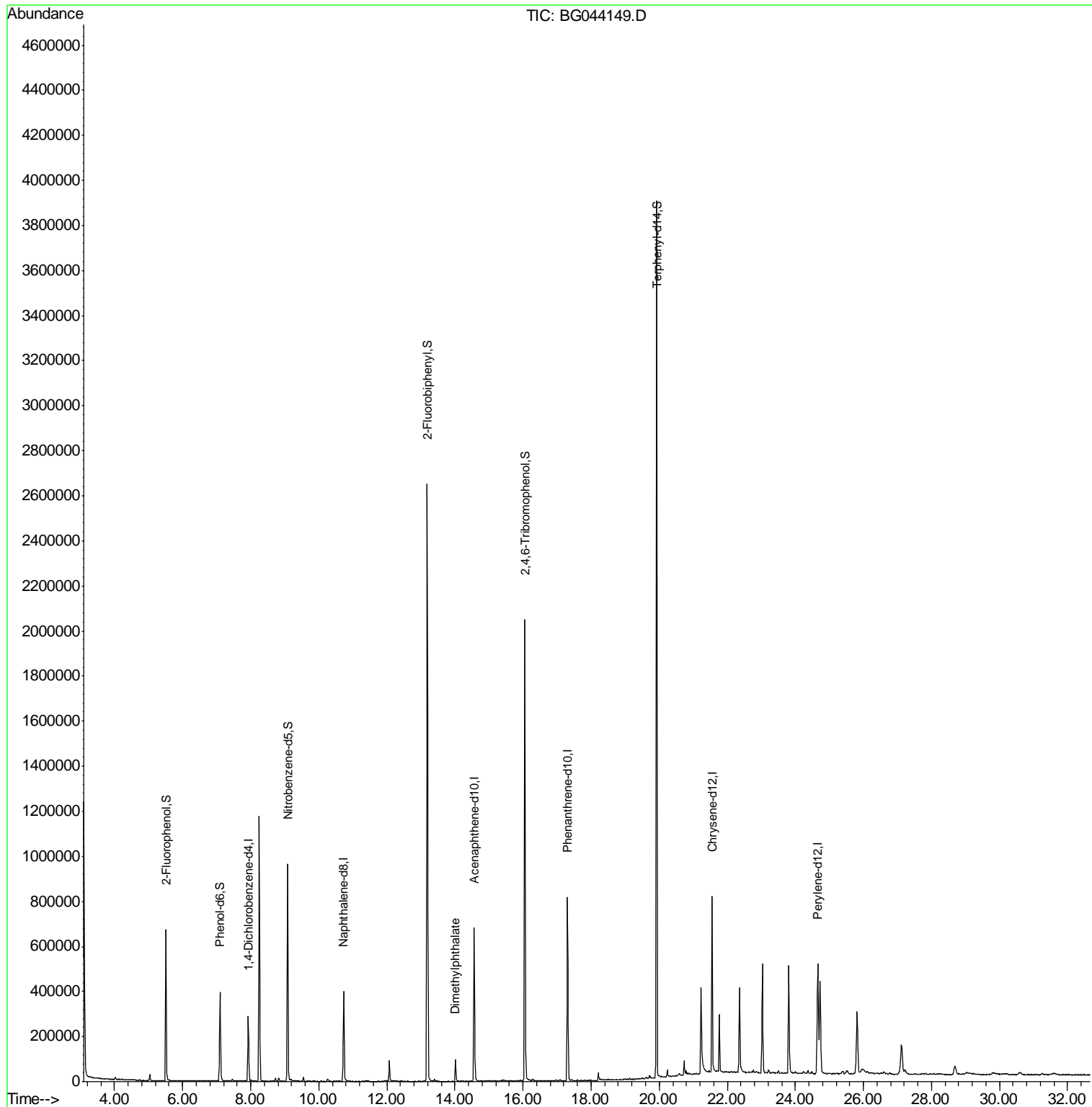
Internal Standards	R.T.	QIon	Response	Conc	Units	Dev(Min)
1) 1,4-Dichlorobenzene-d4	7.93	152	84911	20.00	ng	-0.04
21) Naphthalene-d8	10.73	136	372856	20.00	ng	-0.04
39) Acenaphthene-d10	14.56	164	254559	20.00	ng	-0.04
64) Phenanthrene-d10	17.31	188	514710	20.00	ng	-0.03
76) Chrysene-d12	21.55	240	441836	20.00	ng	-0.04
87) Perylene-d12	24.66	264	489233	20.00	ng	-0.06
System Monitoring Compounds						
5) 2-Fluorophenol	5.51	112	326718	70.65	ng	-0.03
7) Phenol-d6	7.10	99	268061	41.47	ng	-0.03
23) Nitrobenzene-d5	9.09	82	630384	90.44	ng	-0.04
42) 2,4,6-Tribromophenol	16.06	330	392612	147.38	ng	-0.03
45) 2-Fluorobiphenyl	13.19	172	1423610	101.32	ng	-0.04
79) Terphenyl-d14	19.93	244	1804929	104.33	ng	-0.03
Target Compounds						Qvalue
50) Dimethylphthalate	14.02	163	75939	4.201	ng	97

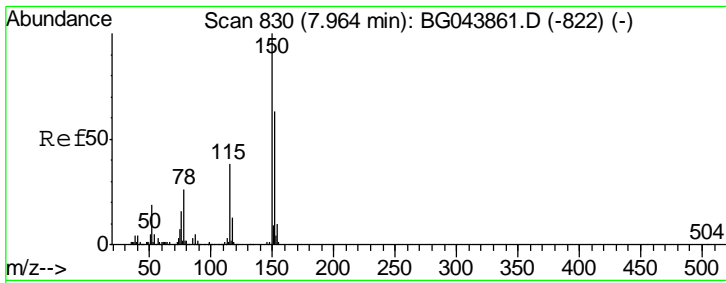
(#) = qualifier out of range (m) = manual integration (+) = signals summed

Data Path : Z:\SVOASRV\HPCHEM1\BNA G\DATA\BG012120\
 Data File : BG044149.D
 Acq On : 22 Jan 2020 1:11
 Operator : JU
 Sample : L1202-02
 Misc :
 ALS Vial : 18 Sample Multiplier: 1

Instrument :
 BNA_G
 ClientSampleId :
 E2-E3-(SETTLED)

Quant Time: Jan 22 07:32:56 2020
 Quant Method : Z:\SVOASRV\HPCHEM1\BNA G\METHODS\8270-BG123019.M
 Quant Title : ASP BNA STANDARDS FOR 5 POINT CALIBRATION
 QLast Update : Tue Dec 31 13:32:23 2019
 Response via : Initial Calibration

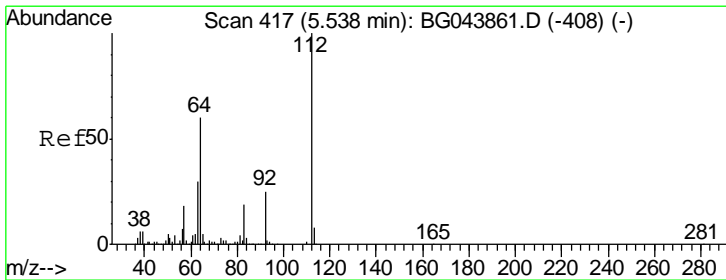
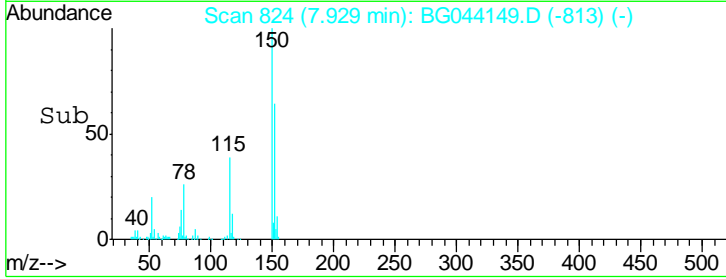
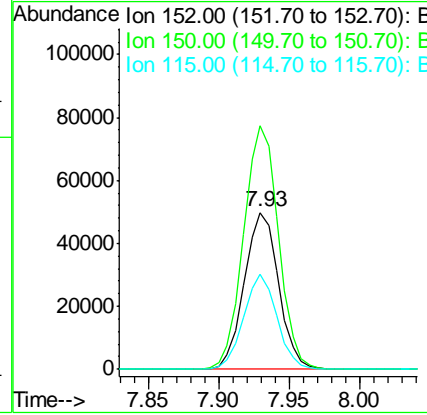
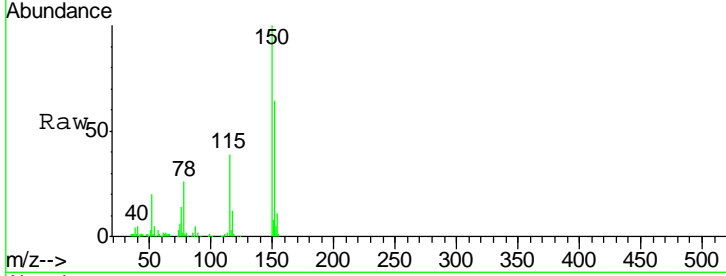




#1
 1,4-Dichlorobenzene-d4
 Concen: 20.000 ng
 RT: 7.93 min Scan# 824
 Delta R.T. -0.04 min
 Lab File: BG044149.D
 Acq: 22 Jan 2020 1:11

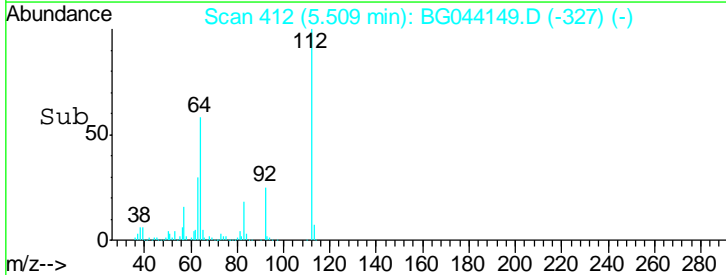
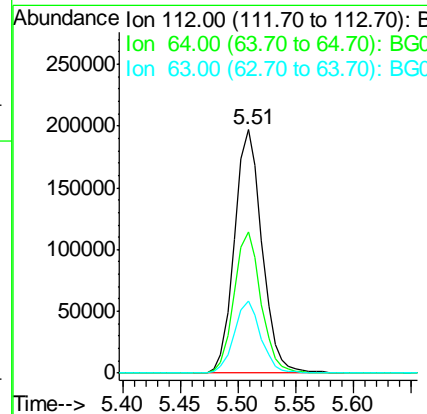
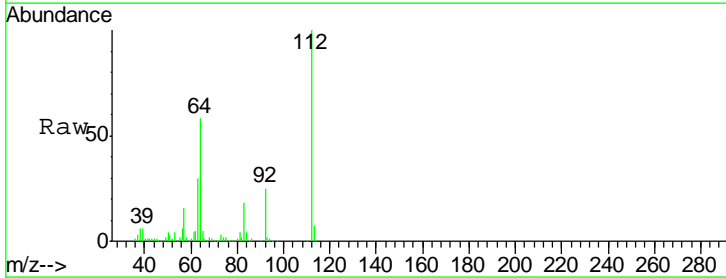
Instrument :
 BNA_G
 ClientSampled :
 E2-E3-(SETTLED)

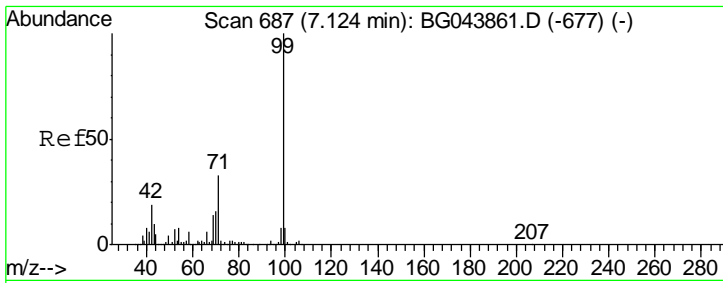
Tgt Ion	Resp	Lower	Upper
152	84911		
152	100		
150	155.4	127.0	190.4
115	60.8	47.8	71.8



#5
 2-Fluorophenol
 Concen: 70.650 ng
 RT: 5.51 min Scan# 412
 Delta R.T. -0.03 min
 Lab File: BG044149.D
 Acq: 22 Jan 2020 1:11

Tgt Ion	Resp	Lower	Upper
112	326718		
112	100		
64	57.8	47.8	71.6
63	29.5	24.3	36.5

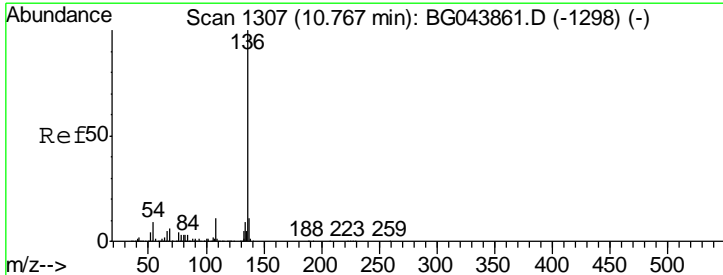
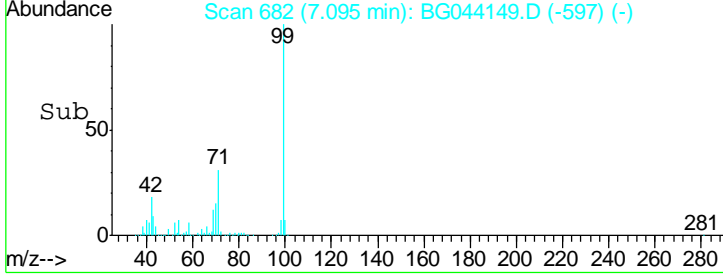
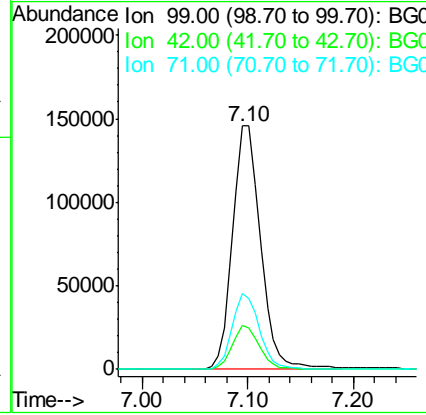
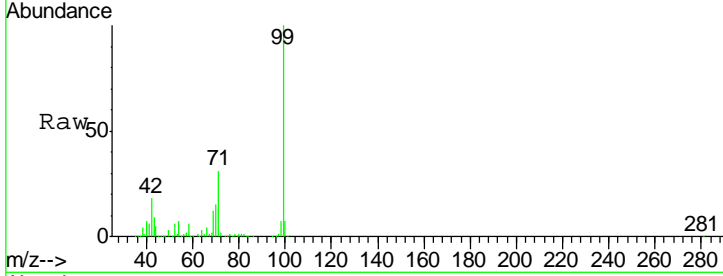




#7
 Phenol-d6
 Concen: 41.469 ng
 RT: 7.10 min Scan# 682
 Delta R.T. -0.03 min
 Lab File: BG044149.D
 Acq: 22 Jan 2020 1:11

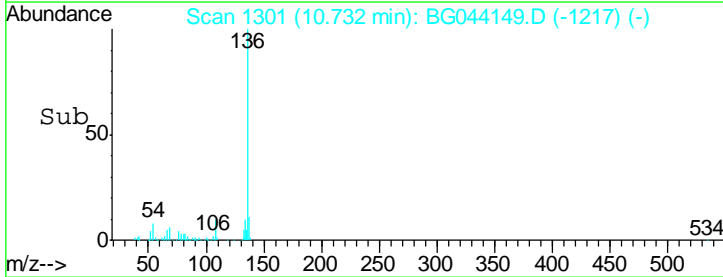
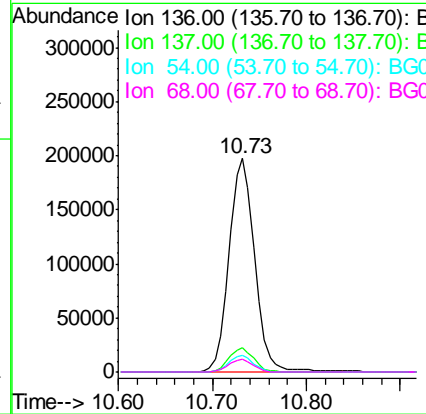
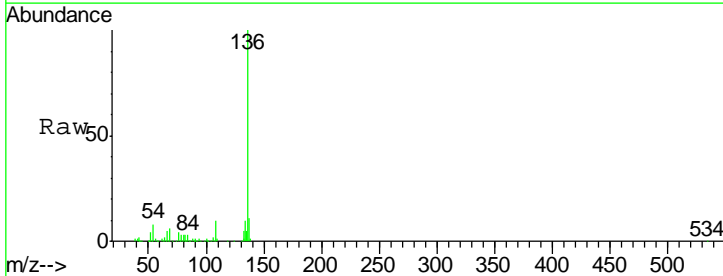
Instrument :
 BNA_G
ClientSampled :
 E2-E3-(SETTLED)

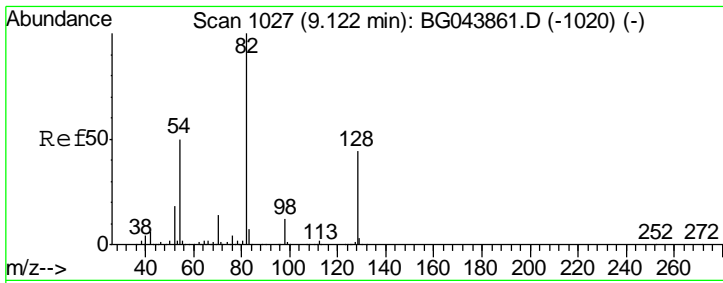
Tgt Ion	Resp	Lower	Upper
99	268061		
42	17.9	14.9	22.3
71	31.3	26.4	39.6



#21
 Naphthalene-d8
 Concen: 20.000 ng
 RT: 10.73 min Scan# 1301
 Delta R.T. -0.04 min
 Lab File: BG044149.D
 Acq: 22 Jan 2020 1:11

Tgt Ion	Resp	Lower	Upper
136	372856		
137	11.3	8.8	13.2
54	7.6	7.0	10.4
68	5.8	4.9	7.3

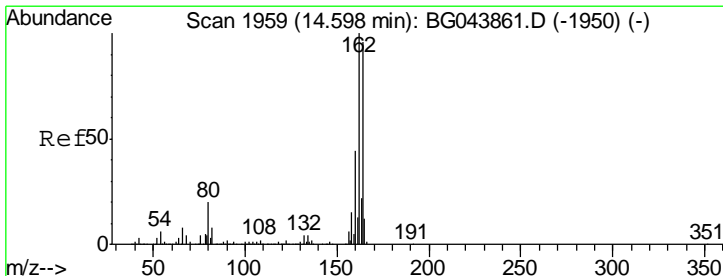
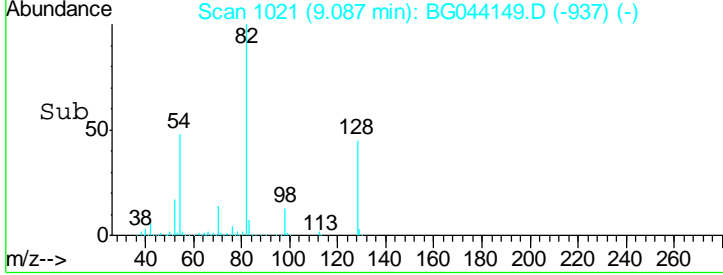
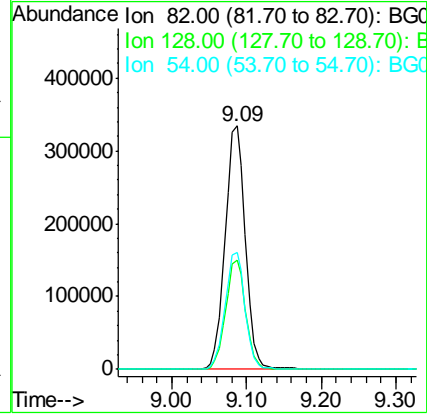
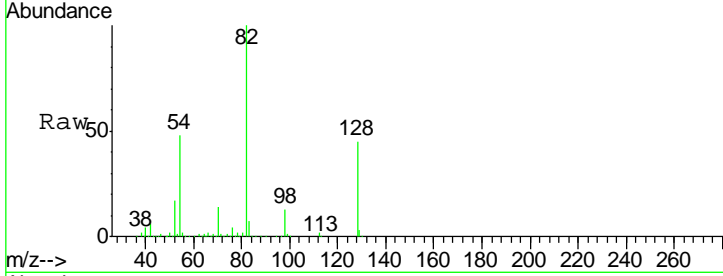




#23
 Nitrobenzene-d5
 Concen: 90.445 ng
 RT: 9.09 min Scan# 1021
 Delta R.T. -0.04 min
 Lab File: BG044149.D
 Acq: 22 Jan 2020 1:11

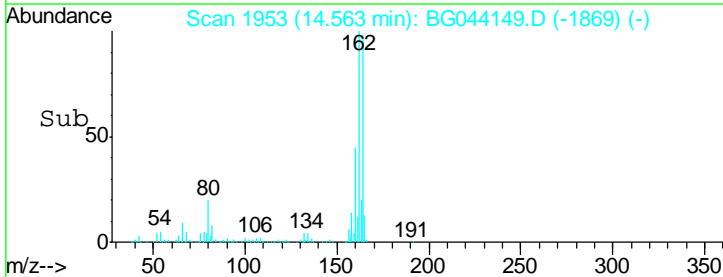
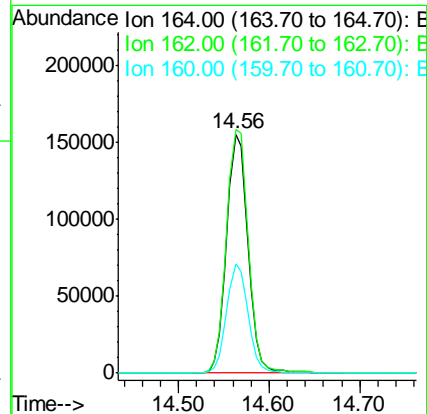
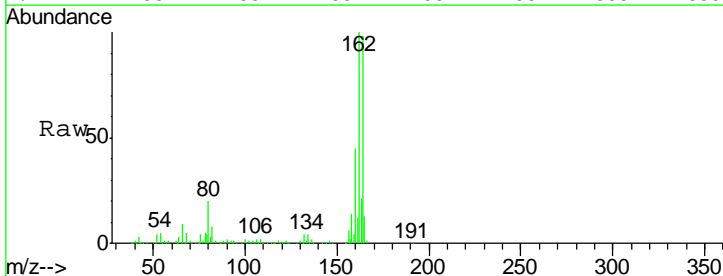
Instrument :
 BNA_G
ClientSampled :
 E2-E3-(SETTLED)

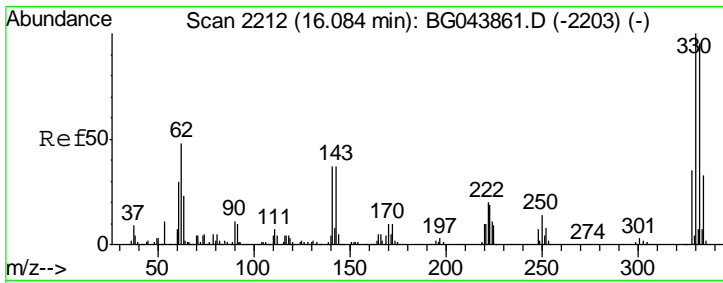
Tgt Ion	Resp	Lower	Upper
82	100		
128	45.1	35.1	52.7
54	48.1	40.1	60.1



#39
 Acenaphthene-d10
 Concen: 20.000 ng
 RT: 14.56 min Scan# 1953
 Delta R.T. -0.04 min
 Lab File: BG044149.D
 Acq: 22 Jan 2020 1:11

Tgt Ion	Resp	Lower	Upper
164	100		
162	102.0	83.0	124.4
160	45.5	36.1	54.1

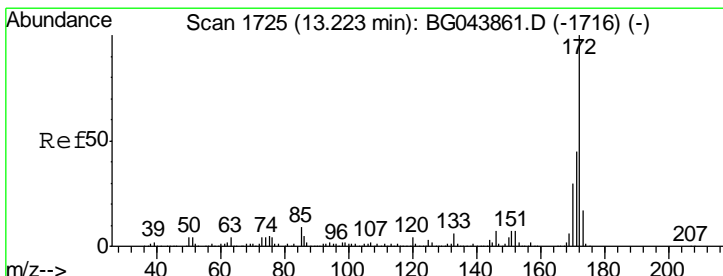
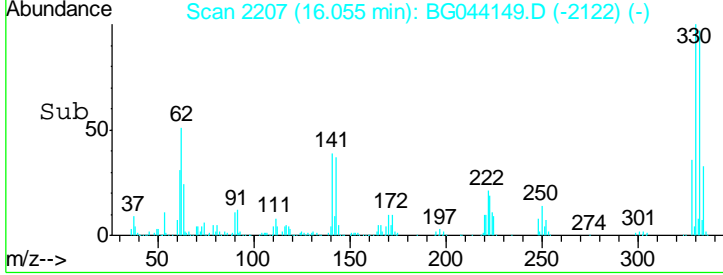
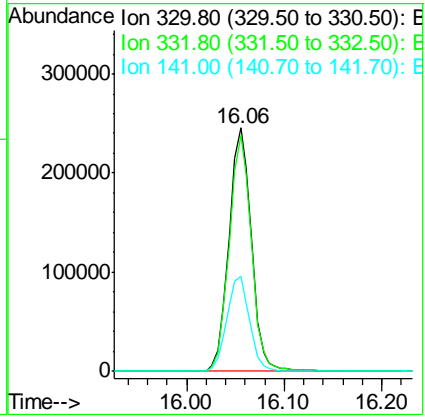
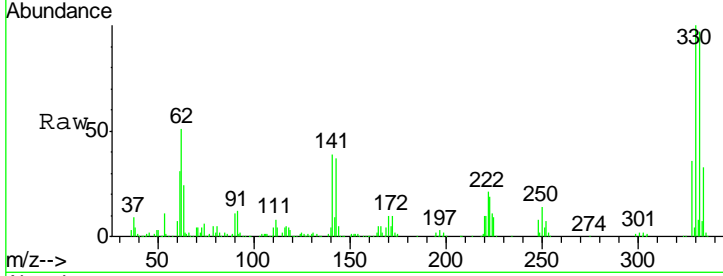




#42
 2,4,6-Tribromophenol
 Concen: 147.382 ng
 RT: 16.06 min Scan# 2207
 Delta R.T. -0.03 min
 Lab File: BG044149.D
 Acq: 22 Jan 2020 1:11

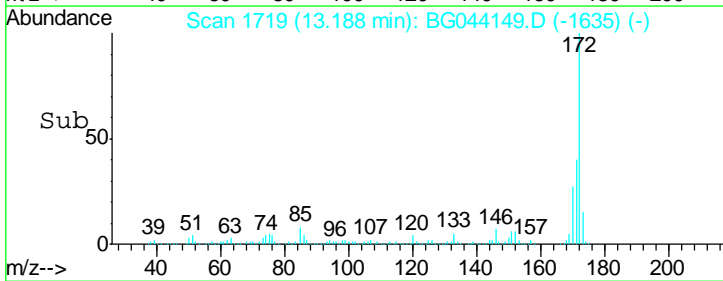
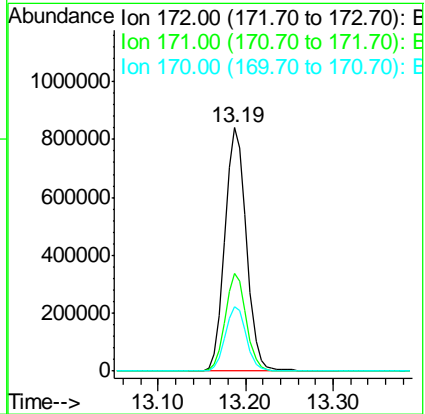
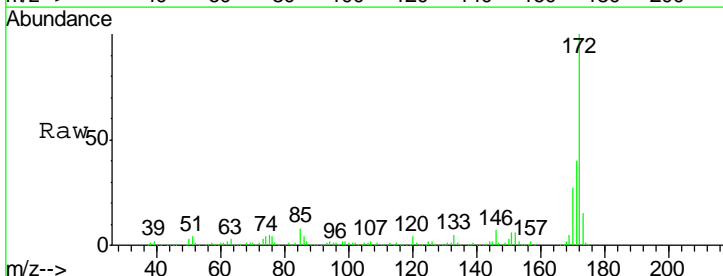
Instrument :
 BNA_G
 ClientSampled :
 E2-E3-(SETTLED)

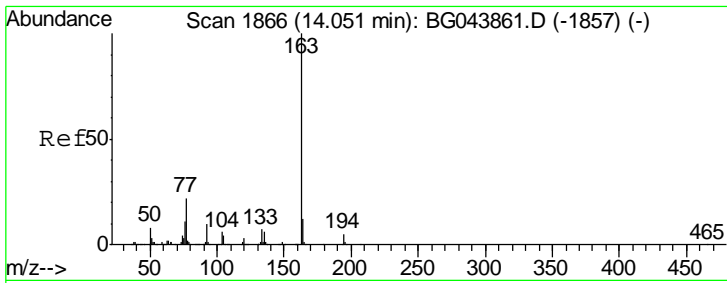
Tgt Ion	Resp	Lower	Upper
330	100		
332	95.9	77.2	115.8
141	39.7	33.1	49.7



#45
 2-Fluorobiphenyl
 Concen: 101.322 ng
 RT: 13.19 min Scan# 1719
 Delta R.T. -0.04 min
 Lab File: BG044149.D
 Acq: 22 Jan 2020 1:11

Tgt Ion	Resp	Lower	Upper
172	100		
171	39.9	35.8	53.8
170	26.6	24.2	36.4

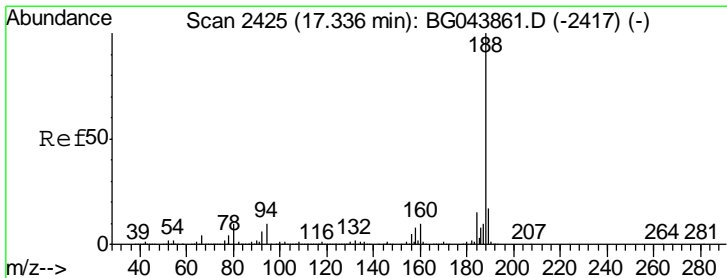
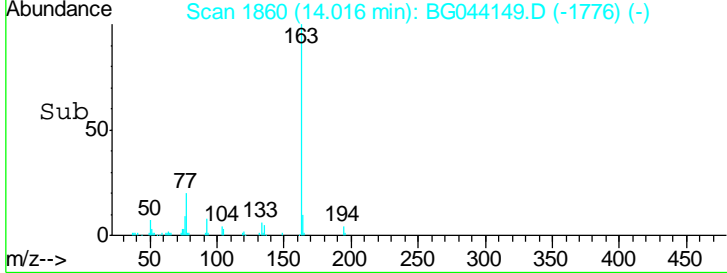
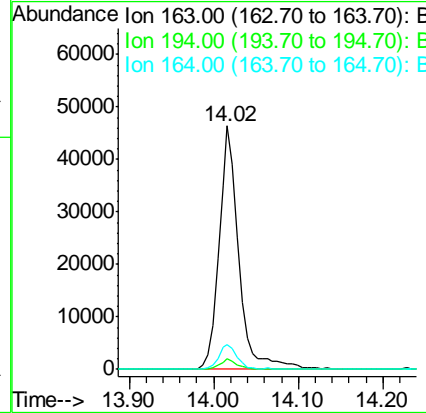
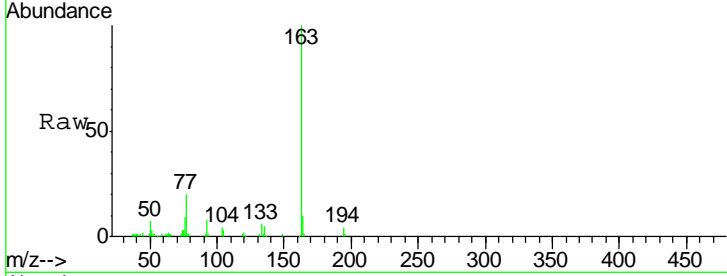




#50
 Dimethylphthalate
 Concen: 4.201 ng
 RT: 14.02 min Scan# 1860
 Delta R.T. -0.04 min
 Lab File: BG044149.D
 Acq: 22 Jan 2020 1:11

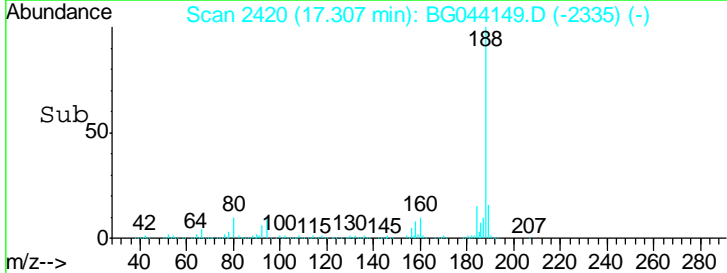
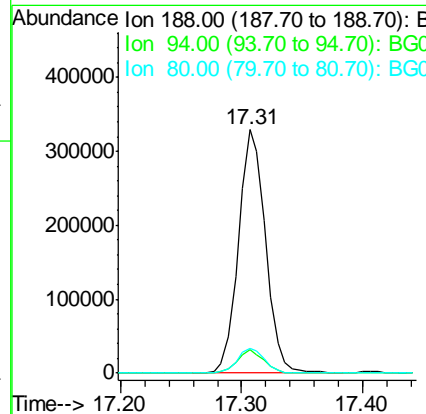
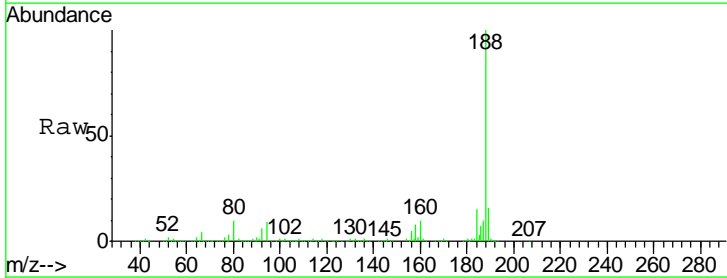
Instrument :
 BNA_G
 ClientSampled :
 E2-E3-(SETTLED)

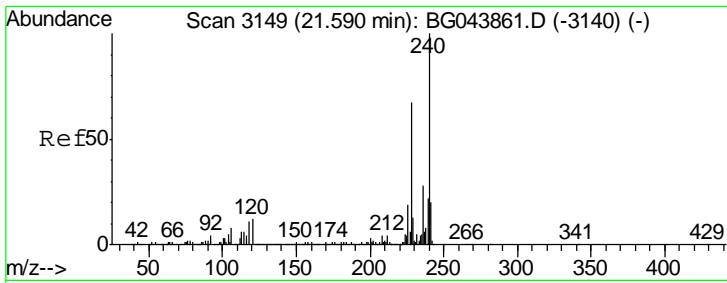
Tgt Ion	Resp	Lower	Upper
163	100		
194	4.2	3.7	5.5
164	10.0	9.3	13.9



#64
 Phenanthrene-d10
 Concen: 20.000 ng
 RT: 17.31 min Scan# 2420
 Delta R.T. -0.03 min
 Lab File: BG044149.D
 Acq: 22 Jan 2020 1:11

Tgt Ion	Resp	Lower	Upper
188	100		
94	9.5	7.9	11.9
80	10.3	8.2	12.4

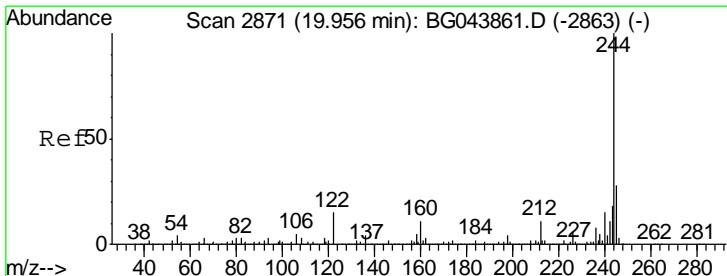
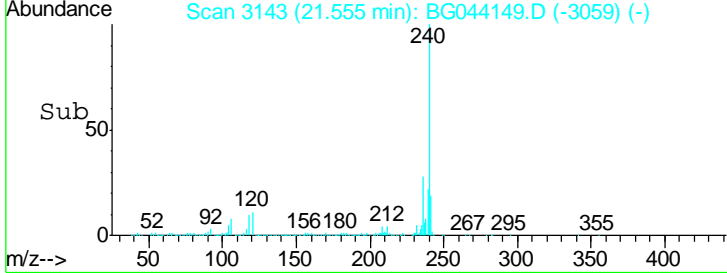
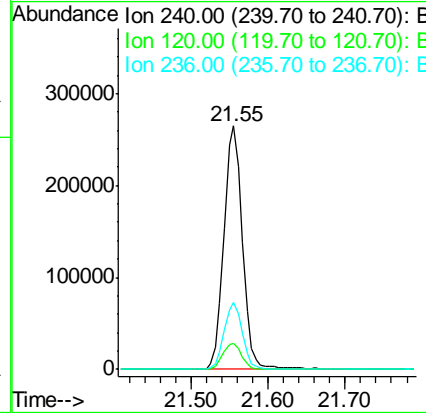
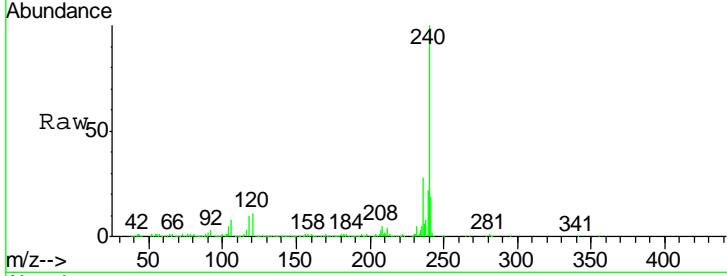




#76
 Chrysene-d12
 Concen: 20.000 ng
 RT: 21.55 min Scan# 3143
 Delta R.T. -0.04 min
 Lab File: BG044149.D
 Acq: 22 Jan 2020 1:11

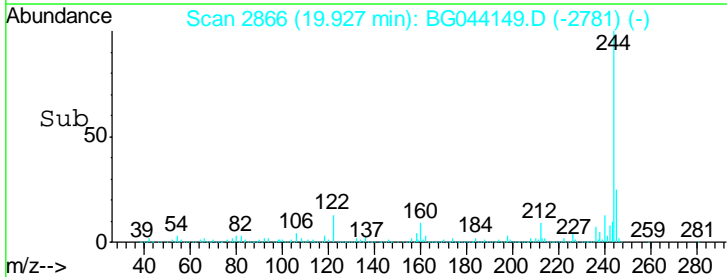
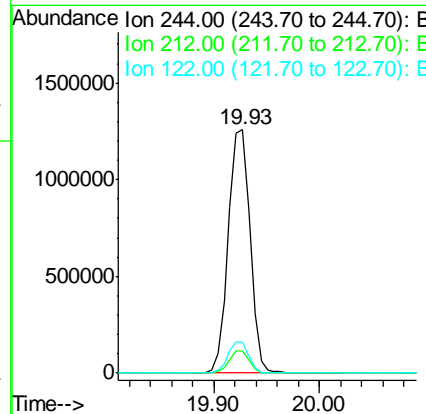
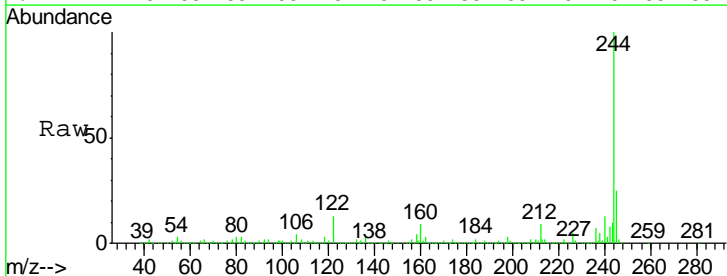
Instrument :
 BNA_G
 ClientSampled :
 E2-E3-(SETTLED)

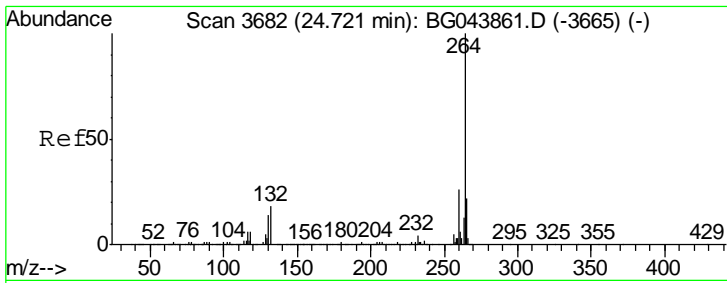
Tgt Ion	Resp	Lower	Upper
240	441836		
120	10.9	9.6	14.4
236	27.6	22.2	33.2



#79
 Terphenyl-d14
 Concen: 104.334 ng
 RT: 19.93 min Scan# 2866
 Delta R.T. -0.03 min
 Lab File: BG044149.D
 Acq: 22 Jan 2020 1:11

Tgt Ion	Resp	Lower	Upper
244	1804929		
212	9.3	8.6	13.0
122	12.6	11.9	17.9





#87
 Perylene-d12
 Concen: 20.000 ng
 RT: 24.66 min Scan# 3672
 Delta R.T. -0.06 min
 Lab File: BG044149.D
 Acq: 22 Jan 2020 1:11

Instrument :
 BNA_G
ClientSampled :
 E2-E3-(SETTLED)

Tot Ion	Ion	Ratio	Lower	Upper
489233	264	100		
	260	25.7	20.4	30.6
	265	21.3	17.4	26.2

