

Data Path : Z:\svoasrv\HPCHEM1\BNA_G\Data\BG012221\
 Data File : BG047977.D
 Acq On : 22 Jan 2021 14:10
 Operator : CG/JU
 Sample : PB134267BS
 Misc :
 ALS Vial : 4 Sample Multiplier: 1

Instrument :
 BNA_G
 ClientSampleID :
 PB134267BS

Quant Time: Jan 22 16:21:53 2021
 Quant Method : Z:\SVOASRV\HPCHEM1\BNA_G\METHODS\8270-BG012121.M
 Quant Title : ASP BNA STANDARDS FOR 5 POINT CALIBRATION
 QLast Update : Thu Jan 21 14:42:53 2021
 Response via : Initial Calibration

Compound	R.T.	QIon	Response	Conc	Units	Dev(Min)	
Internal Standards							
1) 1,4-Dichlorobenzene-d4	8.141	152	47903	20.00	ng	0.00	
21) Naphthalene-d8	10.961	136	188983	20.00	ng	0.00	
39) Acenaphthene-d10	14.763	164	142084	20.00	ng	0.00	
64) Phenanthrene-d10	17.512	188	349084	20.00	ng	# 0.00	
76) Chrysene-d12	21.790	240	367836	20.00	ng	# 0.00	
86) Perylene-d12	25.092	264	384459	20.00	ng	-0.01	
System Monitoring Compounds							
5) 2-Fluorophenol	5.697	112	353750	120.44	ng	0.00	
7) Phenol-d6	7.289	99	487814	110.02	ng	0.00	
23) Nitrobenzene-d5	9.304	82	314647	73.21	ng	0.00	
42) 2,4,6-Tribromophenol	16.249	330	252889	111.22	ng	0.00	
45) 2-Fluorobiphenyl	13.394	172	725207	68.16	ng	0.00	
79) Terphenyl-d14	20.109	244	1305051	65.60	ng	0.00	
Target Compounds							
2) 1,4-Dioxane	3.582	88	38973	28.74	ng	#	86
3) Pyridine	3.981	79	120606	29.61	ng		96
4) n-Nitrosodimethylamine	3.893	42	76198	37.28	ng	#	75
6) Aniline	7.459	93	122219	23.10	ng	#	89
8) 2-Chlorophenol	7.706	128	138109	45.69	ng		89
9) Benzaldehyde	7.271	77	105828	42.94	ng		84
10) Phenol	7.318	94	184010	43.83	ng		75
11) bis(2-Chloroethyl)ether	7.553	93	130084	39.38	ng		94
12) 1,3-Dichlorobenzene	8.035	146	149787	38.96	ng	#	89
13) 1,4-Dichlorobenzene	8.176	146	149603	38.80	ng		95
14) 1,2-Dichlorobenzene	8.499	146	142238	38.43	ng		95
15) Benzyl Alcohol	8.376	79	156448	42.24	ng	#	86
16) 2,2'-oxybis(1-Chloropr...	8.664	45	203656	36.44	ng		99
17) 2-Methylphenol	8.576	107	125188	44.64	ng	#	86
18) Hexachloroethane	9.234	117	55412	38.23	ng		90
19) n-Nitroso-di-n-propyla...	8.946	70	121856	38.83	ng	#	90
20) 3+4-Methylphenols	8.905	107	167333	43.45	ng		90
22) Acetophenone	8.963	105	216785	38.86	ng	#	90
24) Nitrobenzene	9.351	77	182568	42.07	ng	#	85
25) Isophorone	9.874	82	321881	39.88	ng	#	94
26) 2-Nitrophenol	10.062	139	74410	45.92	ng	#	73
27) 2,4-Dimethylphenol	10.115	122	131114	48.59	ng	#	79
28) bis(2-Chloroethoxy)met...	10.356	93	180473	37.59	ng		96
29) 2,4-Dichlorophenol	10.597	162	150474	44.71	ng		99
30) 1,2,4-Trichlorobenzene	10.820	180	164915	38.32	ng		96
31) Naphthalene	11.008	128	415963	39.72	ng		99
32) Benzoic acid	10.244	122	93790	43.29	ng	#	77
33) 4-Chloroaniline	11.102	127	43338	9.35	ng	#	90
34) Hexachlorobutadiene	11.296	225	120169	37.47	ng		96
35) Caprolactam	11.878	113	27867	21.98	ng		92
36) 4-Chloro-3-methylphenol	12.218	107	161435	43.10	ng		87
37) 2-Methylnaphthalene	12.606	142	314832	39.61	ng	#	94
38) 1-Methylnaphthalene	12.824	142	297933	40.04	ng	#	99
40) 1,2,4,5-Tetrachloroben...	12.971	216	213585	39.38	ng	#	97
41) Hexachlorocyclopentadiene	12.953	237	288951	99.70	ng		98
43) 2,4,6-Trichlorophenol	13.200	196	142171	41.05	ng		98

Data Path : Z:\svoasrv\HPCHEM1\BNA_G\Data\BG012221\
 Data File : BG047977.D
 Acq On : 22 Jan 2021 14:10
 Operator : CG/JU
 Sample : PB134267BS
 Misc :
 ALS Vial : 4 Sample Multiplier: 1

Instrument :
 BNA_G
 ClientSampleId :
 PB134267BS

Quant Time: Jan 22 16:21:53 2021
 Quant Method : Z:\SVOASRV\HPCHEM1\BNA_G\METHODS\8270-BG012121.M
 Quant Title : ASP BNA STANDARDS FOR 5 POINT CALIBRATION
 QLast Update : Thu Jan 21 14:42:53 2021
 Response via : Initial Calibration

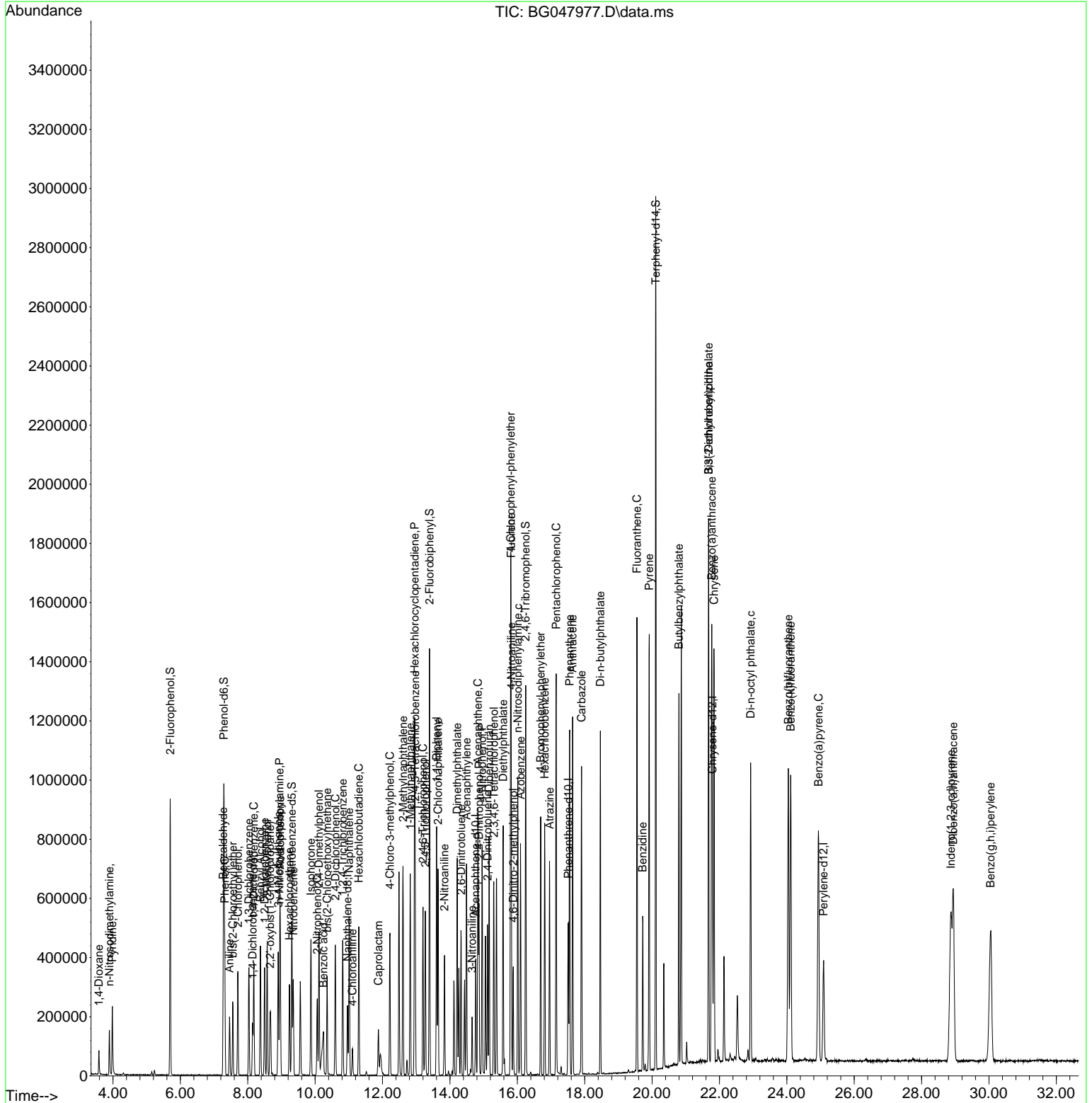
Compound	R.T.	QIon	Response	Conc	Units	Dev(Min)	
44) 2,4,5-Trichlorophenol	13.270	196	155163	43.74	ng	#	94
46) 1,1'-Biphenyl	13.605	154	424057	39.15	ng		99
47) 2-Chloronaphthalene	13.646	162	330152	37.63	ng		95
48) 2-Nitroaniline	13.840	65	117528	38.35	ng	#	74
49) Acenaphthylene	14.492	152	530375	38.53	ng		98
50) Dimethylphthalate	14.216	163	463385	37.52	ng		98
51) 2,6-Dinitrotoluene	14.334	165	99786	41.97	ng	#	73
52) Acenaphthene	14.833	154	393919	43.15	ng		97
53) 3-Nitroaniline	14.657	138	41905	16.15	ng	#	72
54) 2,4-Dinitrophenol	14.862	184	126251	92.68	ng	#	74
55) Dibenzofuran	15.162	168	515642	37.99	ng		95
56) 4-Nitrophenol	14.956	139	162560	80.25	ng	#	49
57) 2,4-Dinitrotoluene	15.115	165	138409	41.49	ng	#	76
58) Fluorene	15.814	166	439344	38.12	ng		95
59) 2,3,4,6-Tetrachlorophenol	15.303	232	152981	41.53	ng		95
60) Diethylphthalate	15.579	149	445216	36.75	ng		98
61) 4-Chlorophenyl-phenyle...	15.803	204	261217	37.92	ng		98
62) 4-Nitroaniline	15.820	138	96131	33.66	ng	#	69
63) Azobenzene	16.096	77	445595	37.53	ng		90
65) 4,6-Dinitro-2-methylph...	15.879	198	88953	50.59	ng		87
66) n-Nitrosodiphenylamine	16.014	169	409060	40.15	ng		96
67) 4-Bromophenyl-phenylether	16.696	248	182039	39.32	ng		96
68) Hexachlorobenzene	16.813	284	191114	38.89	ng		98
69) Atrazine	16.960	200	147699	38.85	ng		98
70) Pentachlorophenol	17.154	266	258109	91.18	ng		99
71) Phenanthrene	17.553	178	740811	39.24	ng		97
72) Anthracene	17.642	178	766746	41.48	ng		97
73) Carbazole	17.906	167	667753	39.61	ng		99
74) Di-n-butylphthalate	18.464	149	762639	38.00	ng	#	98
75) Fluoranthene	19.551	202	991144	39.44	ng		97
77) Benzidine	19.721	184	310325	32.97	ng		98
78) Pyrene	19.915	202	991141	39.82	ng		98
80) Butylbenzylphthalate	20.797	149	345079	39.14	ng	#	87
81) Benzo(a)anthracene	21.772	228	1005441	39.58	ng		99
82) 3,3'-Dichlorobenzidine	21.678	252	204010	23.21	ng	#	99
83) Chrysene	21.837	228	968045	39.79	ng		99
84) Bis(2-ethylhexyl)phtha...	21.678	149	495694	39.56	ng		96
85) Di-n-octyl phthalate	22.924	149	849013	40.44	ng	#	94
87) Indeno(1,2,3-cd)pyrene	28.870	276	1221948	41.53	ng	#	89
88) Benzo(b)fluoranthene	24.046	252	1056746	41.31	ng	#	97
89) Benzo(k)fluoranthene	24.116	252	1037850	41.78	ng	#	96
90) Benzo(a)pyrene	24.939	252	971563	40.32	ng	#	97
91) Dibenzo(a,h)anthracene	28.940	278	1015354	42.32	ng	#	96
92) Benzo(g,h,i)perylene	30.045	276	997869	42.54	ng	#	92

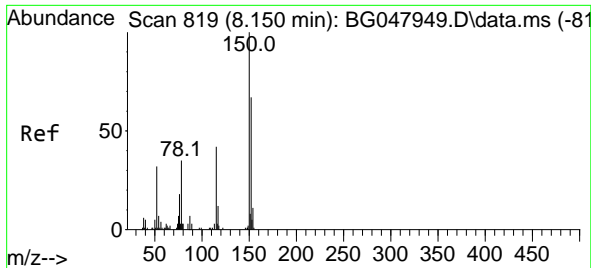
(#) = qualifier out of range (m) = manual integration (+) = signals summed

Data Path : Z:\svoasrv\HPCHEM1\BNA_G\Data\BG012221\
 Data File : BG047977.D
 Acq On : 22 Jan 2021 14:10
 Operator : CG/JU
 Sample : PB134267BS
 Misc :
 ALS Vial : 4 Sample Multiplier: 1

Instrument :
 BNA_G
 Client Sampled :
 PB134267BS

Quant Time: Jan 22 16:21:53 2021
 Quant Method : Z:\SVOASRV\HPCHEM1\BNA_G\METHODS\8270-BG012121.M
 Quant Title : ASP BNA STANDARDS FOR 5 POINT CALIBRATION
 QLast Update : Thu Jan 21 14:42:53 2021
 Response via : Initial Calibration

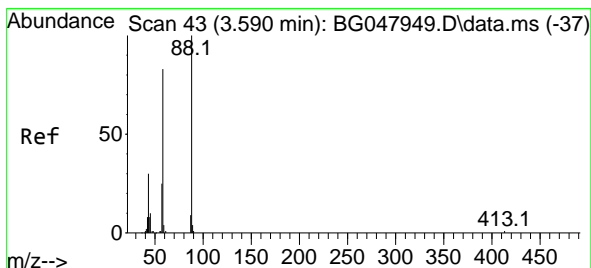
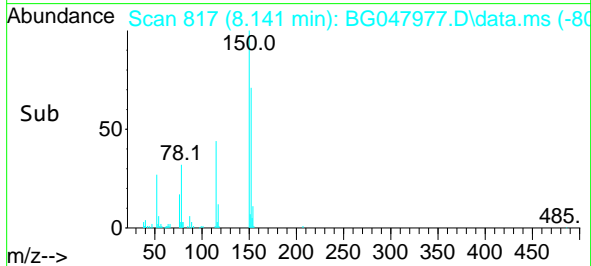
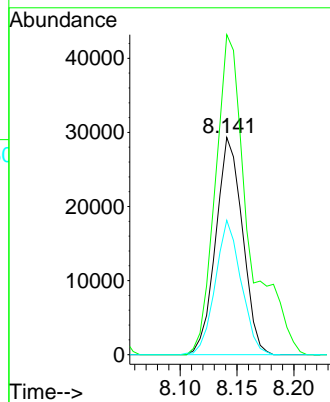
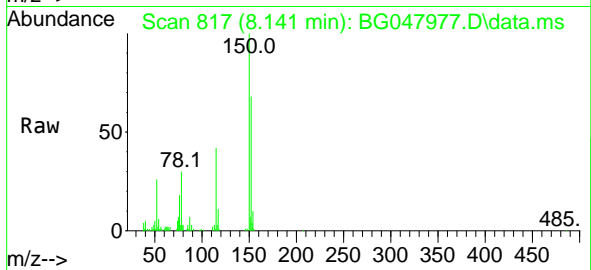




#1
 1,4-Dichlorobenzene-d4
 Concen: 20.00 ng
 RT: 8.141 min Scan# 817
 Delta R.T. -0.009 min
 Lab File: BG047977.D
 Acq: 22 Jan 2021 14:10

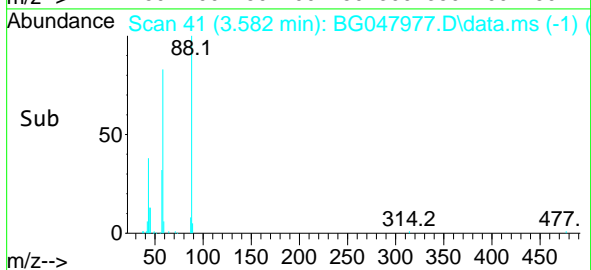
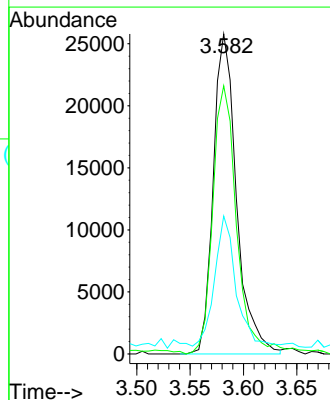
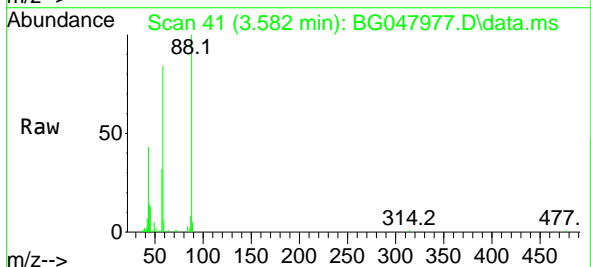
Instrument :
 BNA_G
 ClientSampled :
 PB134267BS

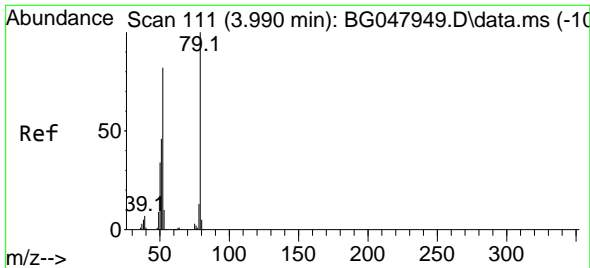
Tgt Ion:152 Resp: 47903
 Ion Ratio Lower Upper
 152 100
 150 147.3 125.0 187.6
 115 61.9 41.8 62.6



#2
 1,4-Dioxane
 Concen: 28.74 ng
 RT: 3.582 min Scan# 41
 Delta R.T. -0.008 min
 Lab File: BG047977.D
 Acq: 22 Jan 2021 14:10

Tgt Ion: 88 Resp: 38973
 Ion Ratio Lower Upper
 88 100
 58 87.6 61.6 92.4
 43 37.1 21.3 31.9#

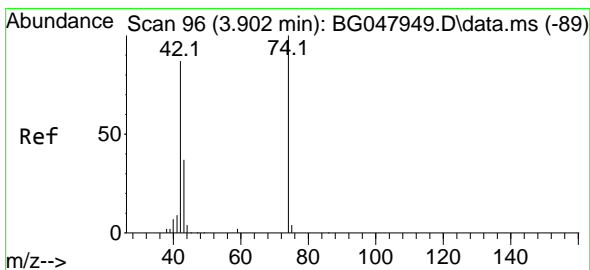
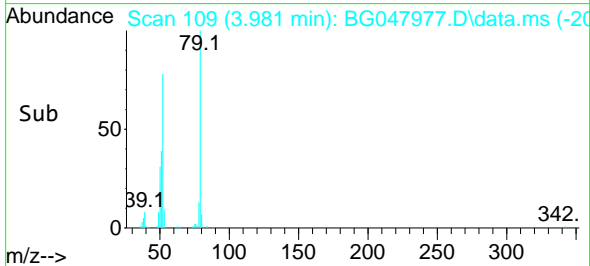
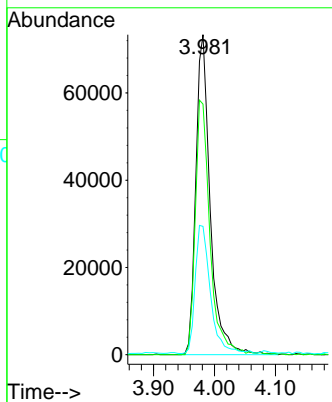
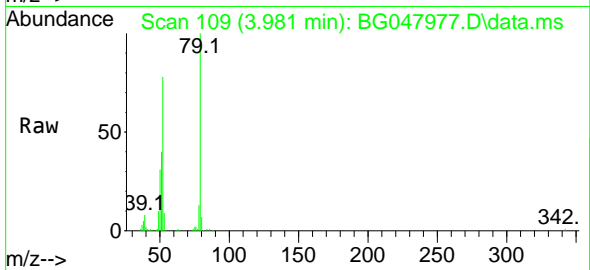




#3
 Pyridine
 Concen: 29.61 ng
 RT: 3.981 min Scan# 109
 Delta R.T. -0.009 min
 Lab File: BG047977.D
 Acq: 22 Jan 2021 14:10

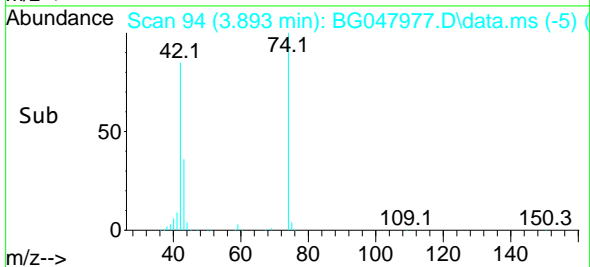
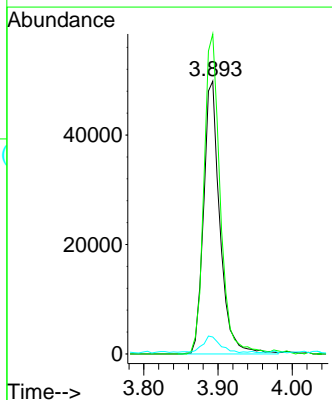
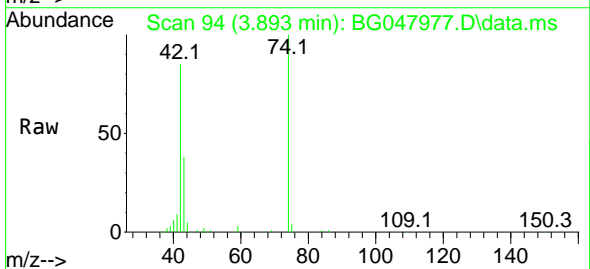
Instrument :
 BNA_G
ClientSampleId :
 PB134267BS

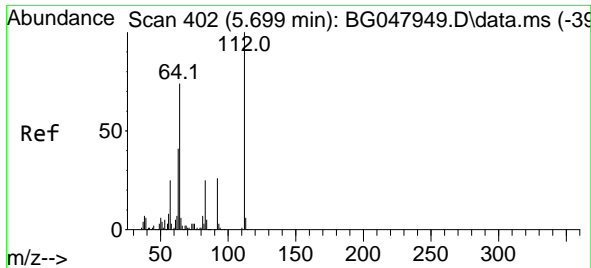
Tgt Ion	Resp	Lower	Upper
79	120606		
79	100		
52	78.3	61.3	91.9
51	40.1	28.4	42.6



#4
 n-Nitrosodimethylamine
 Concen: 37.28 ng
 RT: 3.893 min Scan# 94
 Delta R.T. -0.009 min
 Lab File: BG047977.D
 Acq: 22 Jan 2021 14:10

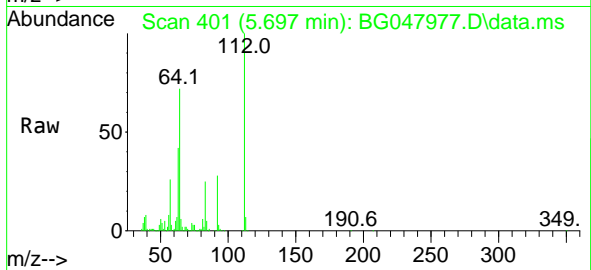
Tgt Ion	Resp	Lower	Upper
42	76198		
42	100		
74	117.3	120.4	180.6#
44	6.2	6.2	9.2





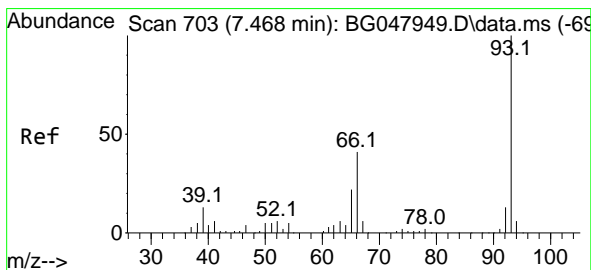
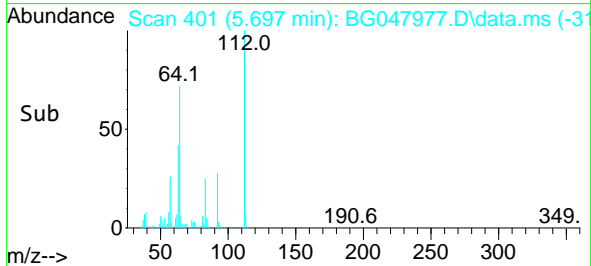
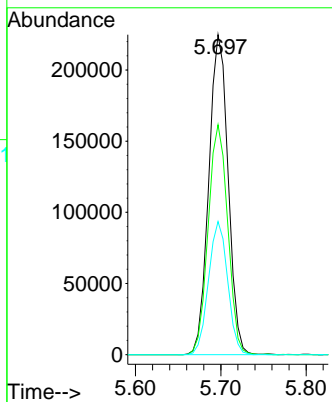
#5
 2-Fluorophenol
 Concen: 120.44 ng
 RT: 5.697 min Scan# 401
 Delta R.T. -0.003 min
 Lab File: BG047977.D
 Acq: 22 Jan 2021 14:10

Instrument :
 BNA_G
 ClientSampled :
 PB134267BS



Tgt Ion: 112 Resp: 353750

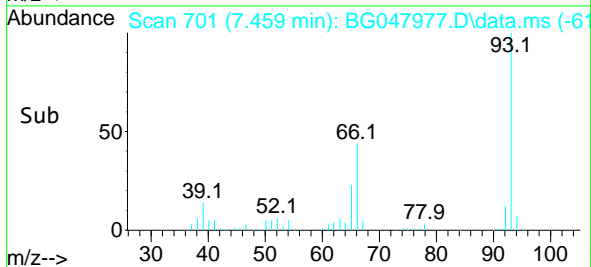
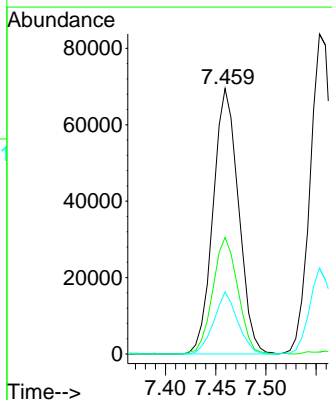
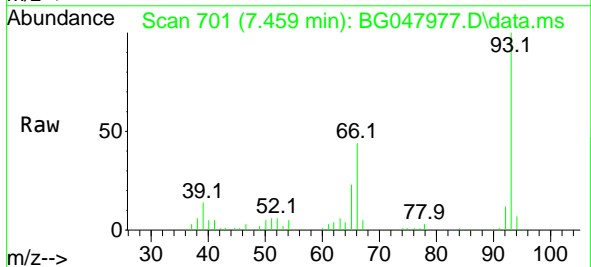
Ion	Ratio	Lower	Upper
112	100		
64	71.9	46.7	70.1#
63	41.6	22.8	34.2#

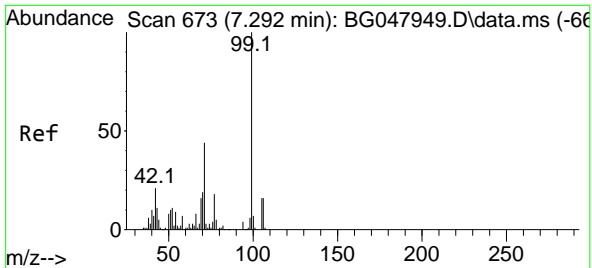


#6
 Aniline
 Concen: 23.10 ng
 RT: 7.459 min Scan# 701
 Delta R.T. -0.009 min
 Lab File: BG047977.D
 Acq: 22 Jan 2021 14:10

Tgt Ion: 93 Resp: 122219

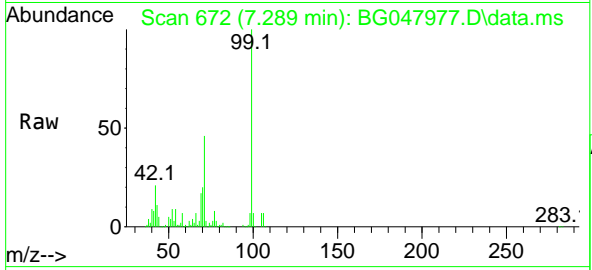
Ion	Ratio	Lower	Upper
93	100		
66	43.9	29.5	44.3
65	23.4	15.5	23.3#





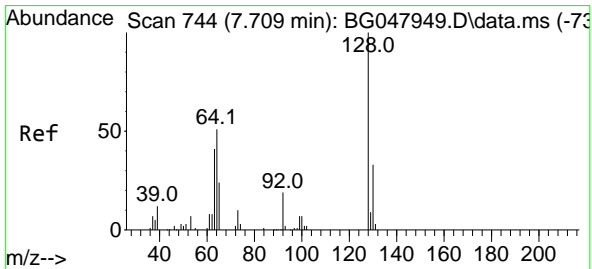
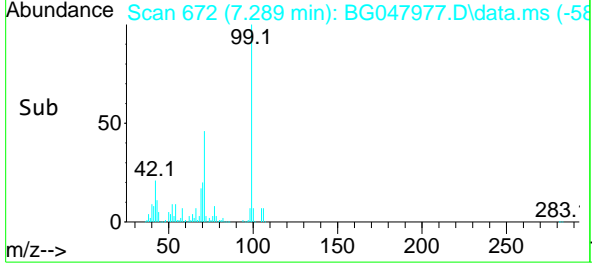
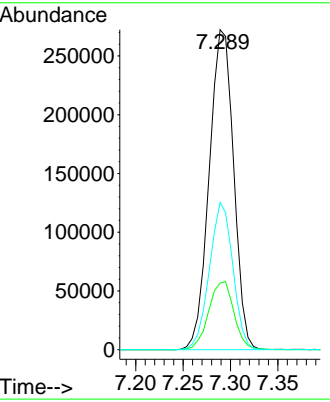
#7
 Phenol-d6
 Concen: 110.02 ng
 RT: 7.289 min Scan# 672
 Delta R.T. -0.003 min
 Lab File: BG047977.D
 Acq: 22 Jan 2021 14:10

Instrument :
 BNA_G
ClientSampled :
 PB134267BS

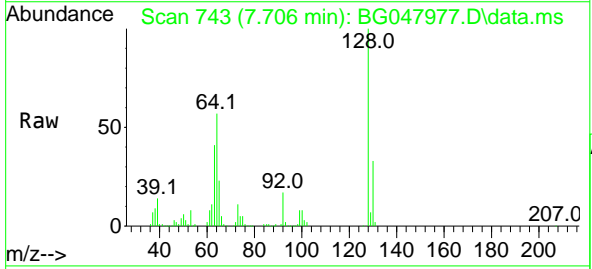


Tgt Ion: 99 Resp: 487814

Ion	Ratio	Lower	Upper
99	100		
42	20.8	12.8	19.2#
71	46.0	24.6	36.8#

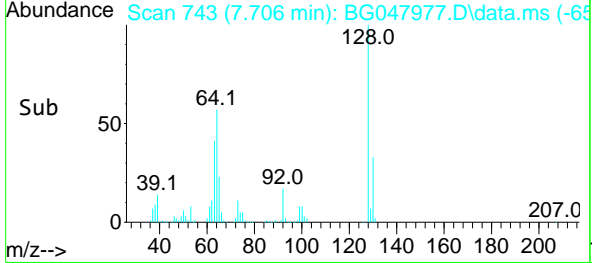
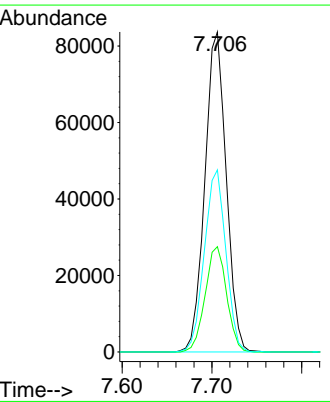


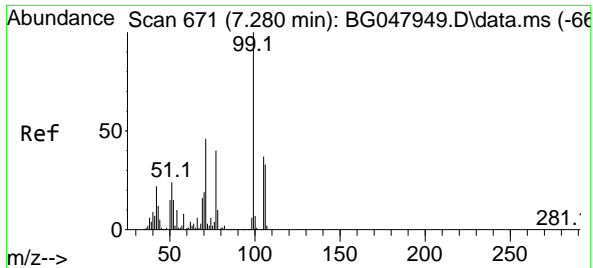
#8
 2-Chlorophenol
 Concen: 45.69 ng
 RT: 7.706 min Scan# 743
 Delta R.T. -0.003 min
 Lab File: BG047977.D
 Acq: 22 Jan 2021 14:10



Tgt Ion: 128 Resp: 138109

Ion	Ratio	Lower	Upper
128	100		
130	32.9	12.6	52.6
64	56.9	24.8	64.8

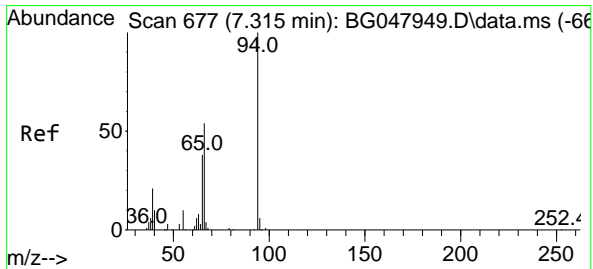
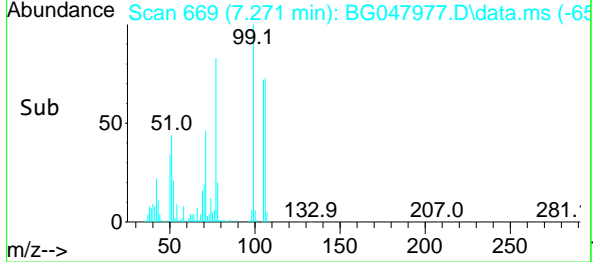
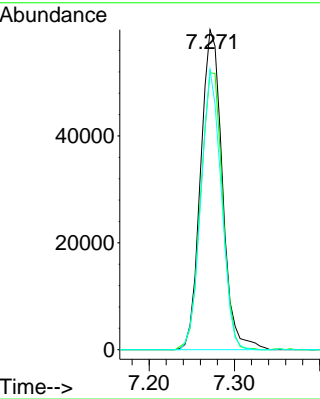
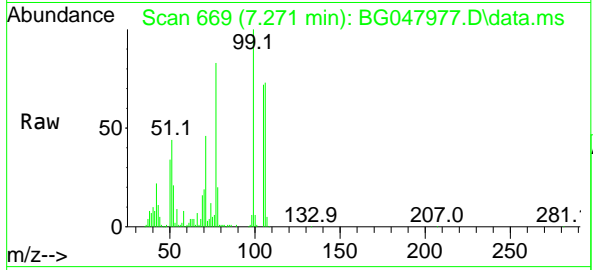




#9
Benzaldehyde
Concen: 42.94 ng
RT: 7.271 min Scan# 669
Delta R.T. -0.009 min
Lab File: BG047977.D
Acq: 22 Jan 2021 14:10

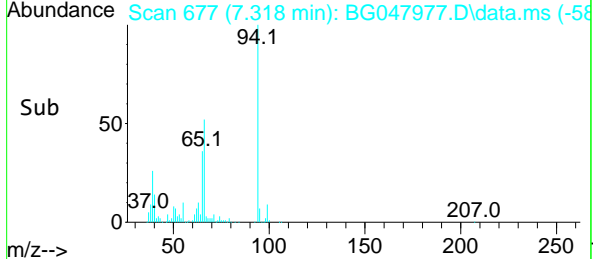
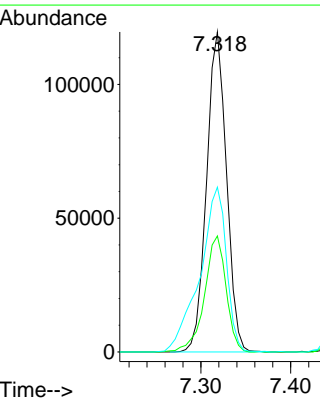
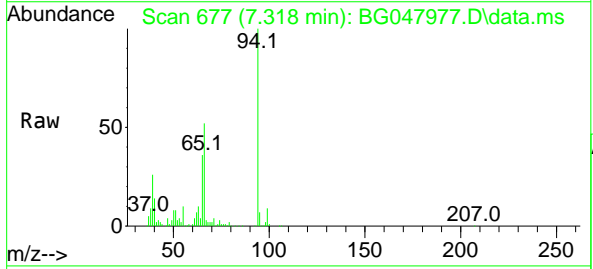
Instrument :
BNA_G
ClientSampleId :
PB134267BS

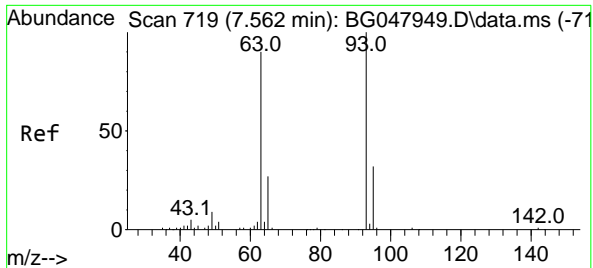
Tgt Ion	Resp	Lower	Upper
77	105828		
77	100		
105	86.6	85.9	125.9
106	87.5	80.9	120.9



#10
Phenol
Concen: 43.83 ng
RT: 7.318 min Scan# 677
Delta R.T. 0.003 min
Lab File: BG047977.D
Acq: 22 Jan 2021 14:10

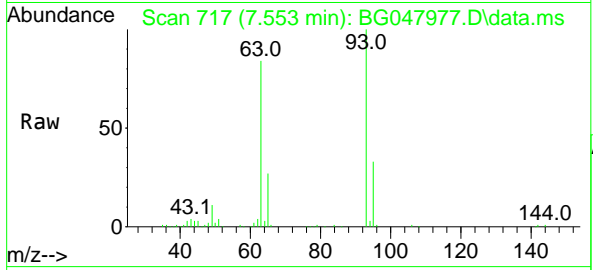
Tgt Ion	Resp	Lower	Upper
94	184010		
94	100		
65	36.2	6.6	46.6
66	51.5	13.9	53.9





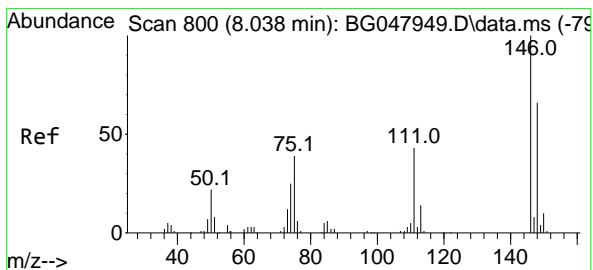
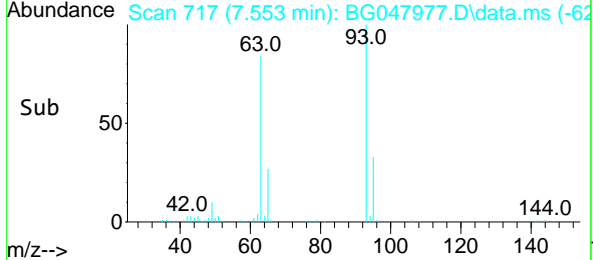
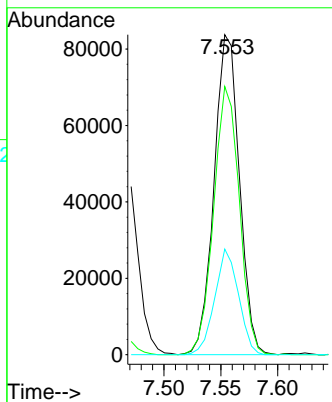
#11
 bis(2-Chloroethyl)ether
 Concen: 39.38 ng
 RT: 7.553 min Scan# 717
 Delta R.T. -0.009 min
 Lab File: BG047977.D
 Acq: 22 Jan 2021 14:10

Instrument :
 BNA_G
ClientSampled :
 PB134267BS

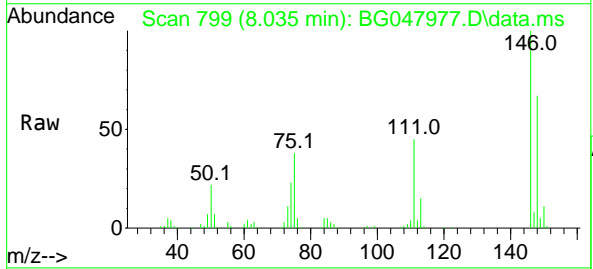


Tgt Ion: 93 Resp: 130084

Ion	Ratio	Lower	Upper
93	100		
63	83.8	56.4	96.4
95	33.0	13.8	53.8

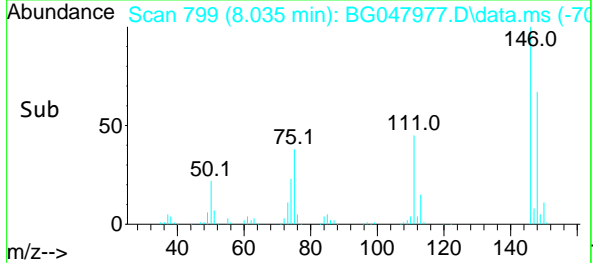
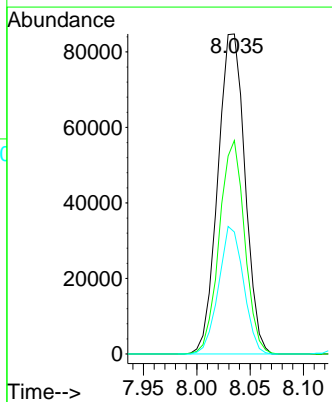


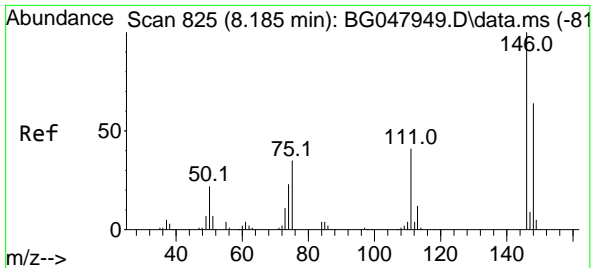
#12
 1,3-Dichlorobenzene
 Concen: 38.96 ng
 RT: 8.035 min Scan# 799
 Delta R.T. -0.003 min
 Lab File: BG047977.D
 Acq: 22 Jan 2021 14:10



Tgt Ion: 146 Resp: 149787

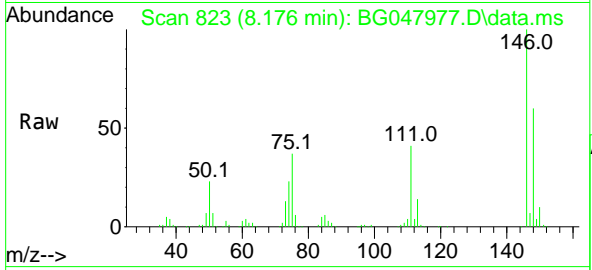
Ion	Ratio	Lower	Upper
146	100		
148	66.7	50.1	75.1
75	38.1	20.1	30.1





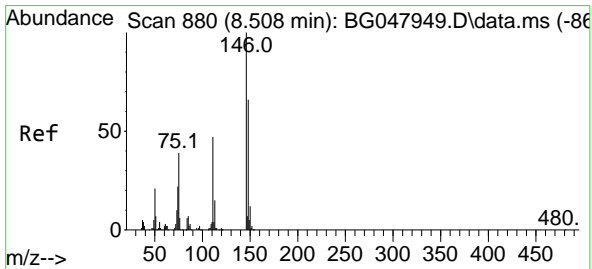
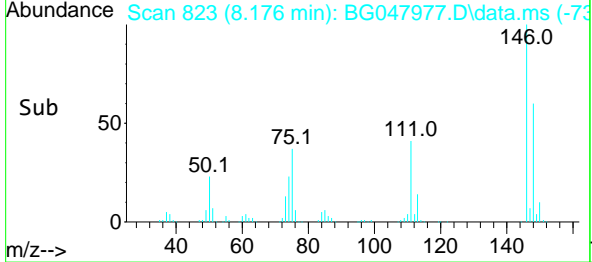
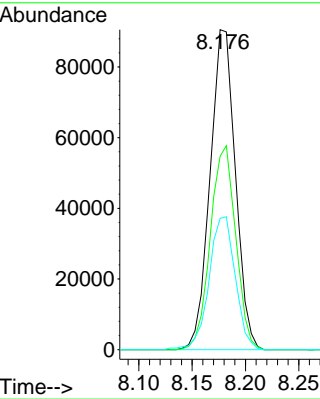
#13
 1,4-Dichlorobenzene
 Concen: 38.80 ng
 RT: 8.176 min Scan# 823
 Delta R.T. -0.009 min
 Lab File: BG047977.D
 Acq: 22 Jan 2021 14:10

Instrument :
 BNA_G
 ClientSampled :
 PB134267BS

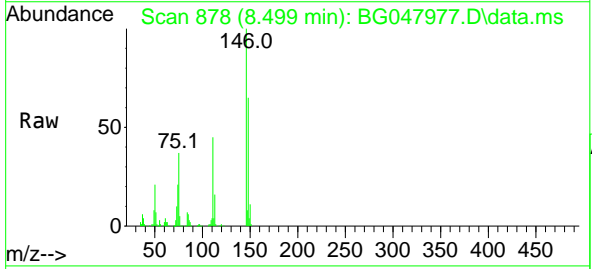


Tgt Ion:146 Resp: 149603

Ion	Ratio	Lower	Upper
146	100		
148	60.5	51.1	76.7
111	41.1	29.7	44.5

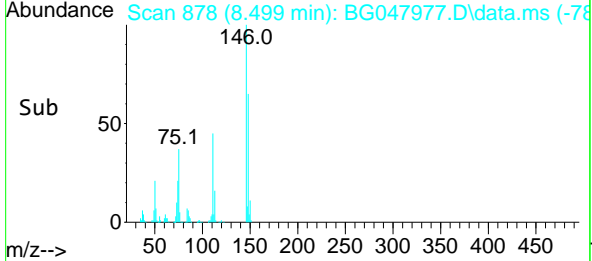
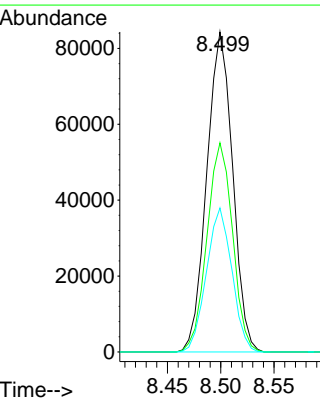


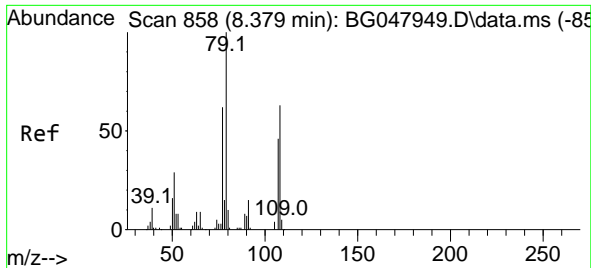
#14
 1,2-Dichlorobenzene
 Concen: 38.43 ng
 RT: 8.499 min Scan# 878
 Delta R.T. -0.009 min
 Lab File: BG047977.D
 Acq: 22 Jan 2021 14:10



Tgt Ion:146 Resp: 142238

Ion	Ratio	Lower	Upper
146	100		
148	65.4	53.0	79.6
111	45.0	30.7	46.1

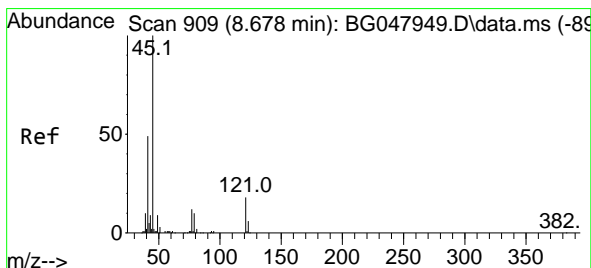
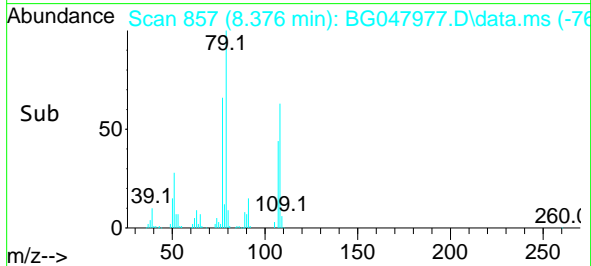
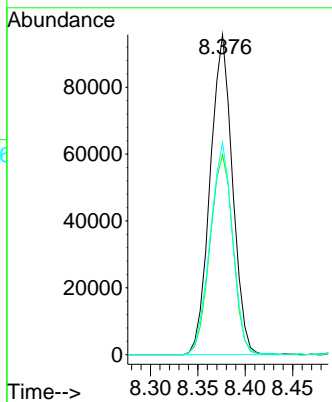
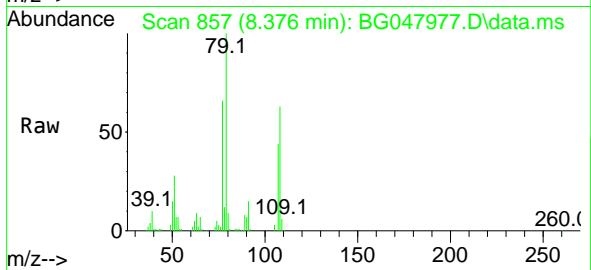




#15
 Benzyl Alcohol
 Concen: 42.24 ng
 RT: 8.376 min Scan# 857
 Delta R.T. -0.003 min
 Lab File: BG047977.D
 Acq: 22 Jan 2021 14:10

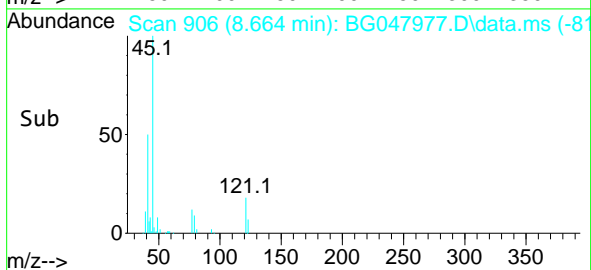
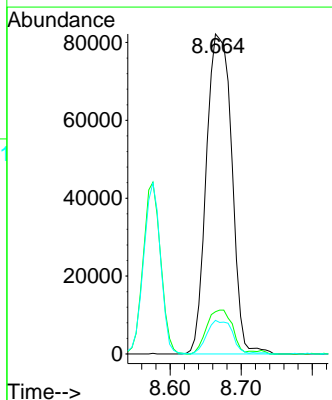
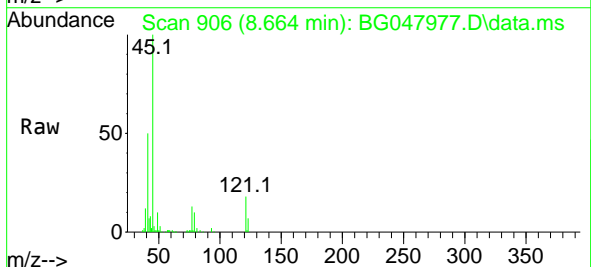
Instrument :
 BNA_G
 ClientSampled :
 PB134267BS

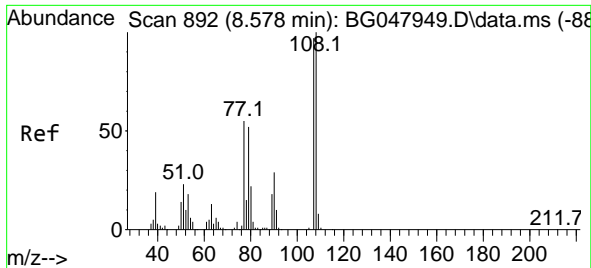
Tgt Ion	Resp	Lower	Upper
79	156448		
79	100		
108	62.6	65.5	98.3#
77	66.4	50.1	75.1



#16
 2,2'-oxybis(1-Chloropropane)
 Concen: 36.44 ng
 RT: 8.664 min Scan# 906
 Delta R.T. -0.014 min
 Lab File: BG047977.D
 Acq: 22 Jan 2021 14:10

Tgt Ion	Resp	Lower	Upper
45	203656		
45	100		
77	13.2	0.0	33.4
79	10.5	0.0	30.8

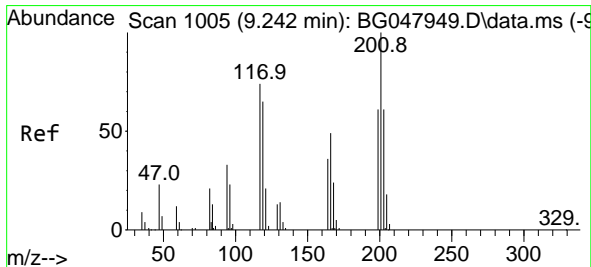
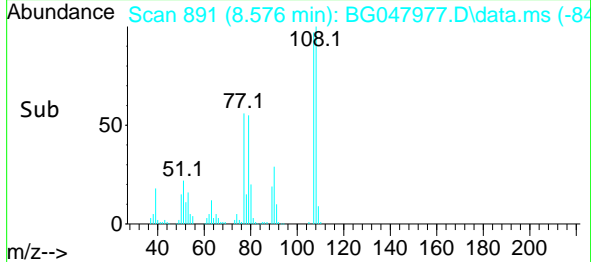
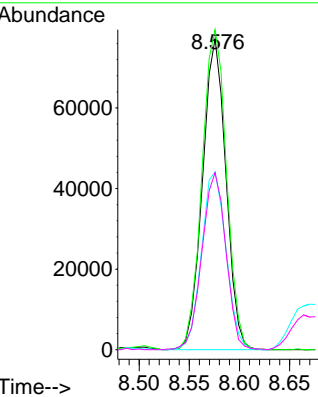
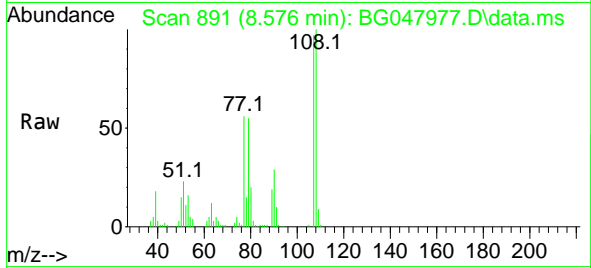




#17
 2-Methylphenol
 Concen: 44.64 ng
 RT: 8.576 min Scan# 891
 Delta R.T. -0.003 min
 Lab File: BG047977.D
 Acq: 22 Jan 2021 14:10

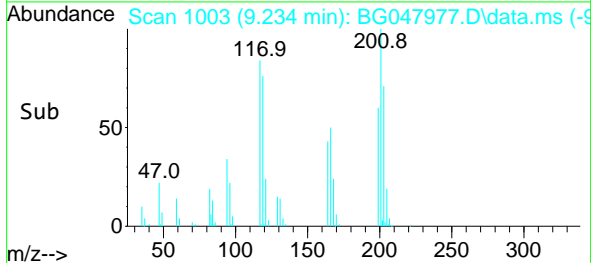
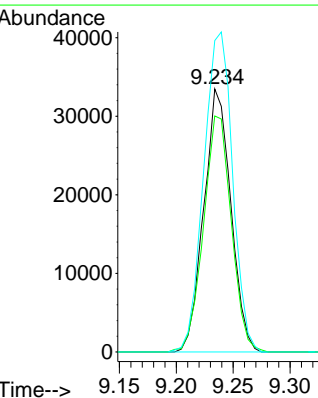
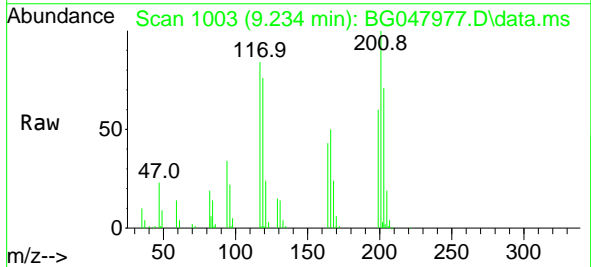
Instrument :
 BNA_G
 ClientSampled :
 PB134267BS

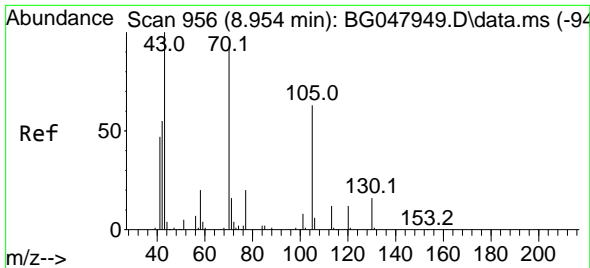
Tgt Ion	Resp	Lower	Upper
107	125188		
107	100		
108	103.0	87.2	130.8
77	57.2	33.8	50.8#
79	56.9	32.7	49.1#



#18
 Hexachloroethane
 Concen: 38.23 ng
 RT: 9.234 min Scan# 1003
 Delta R.T. -0.009 min
 Lab File: BG047977.D
 Acq: 22 Jan 2021 14:10

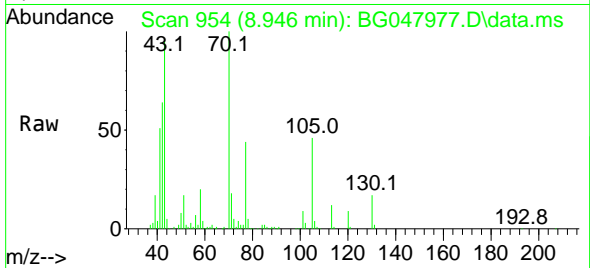
Tgt Ion	Resp	Lower	Upper
117	55412		
117	100		
119	89.8	77.5	116.3
201	117.1	104.9	157.3



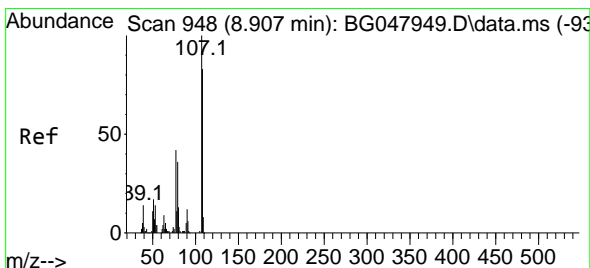
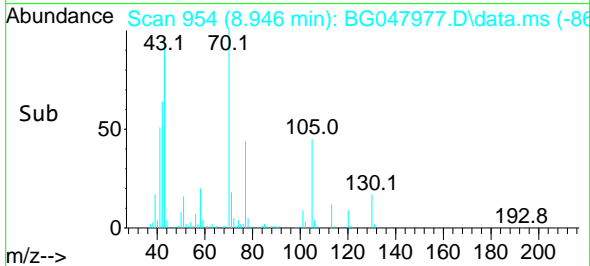
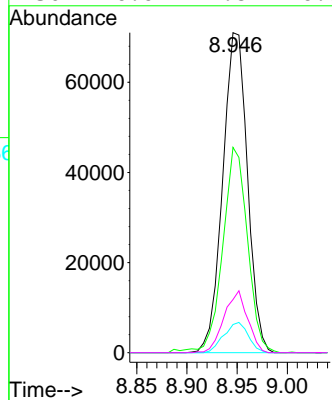


#19
 n-Nitroso-di-n-propylamine
 Concen: 38.83 ng
 RT: 8.946 min Scan# 954
 Delta R.T. -0.009 min
 Lab File: BG047977.D
 Acq: 22 Jan 2021 14:10

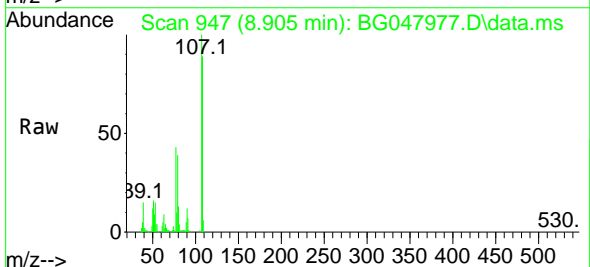
Instrument :
 BNA_G
 ClientSampled :
 PB134267BS



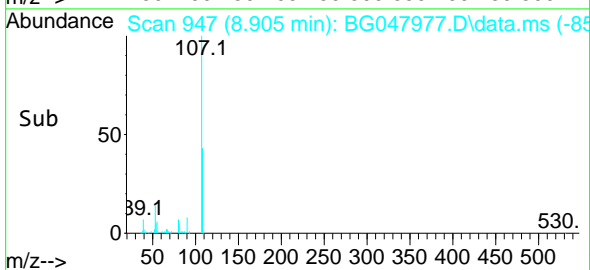
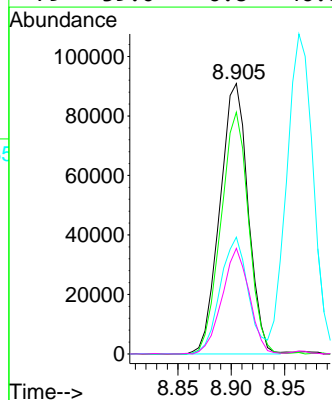
Tgt Ion: 70 Resp: 121856
 Ion Ratio Lower Upper
 70 100
 42 64.2 45.6 68.4
 101 8.8 8.4 12.6
 130 16.6 17.8 26.8#

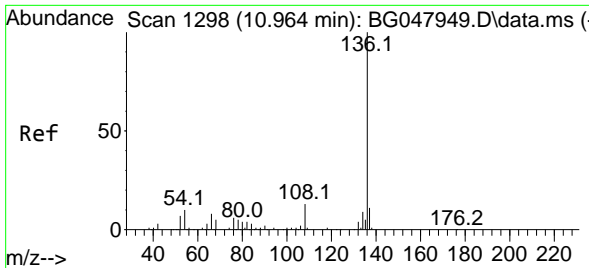


#20
 3+4-Methylphenols
 Concen: 43.45 ng
 RT: 8.905 min Scan# 947
 Delta R.T. -0.003 min
 Lab File: BG047977.D
 Acq: 22 Jan 2021 14:10



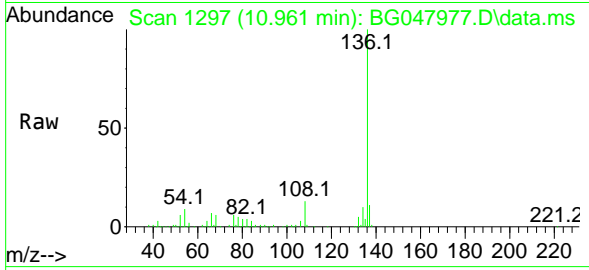
Tgt Ion: 107 Resp: 167333
 Ion Ratio Lower Upper
 107 100
 108 89.4 70.6 110.6
 77 43.2 10.2 50.2
 79 39.0 6.8 46.8





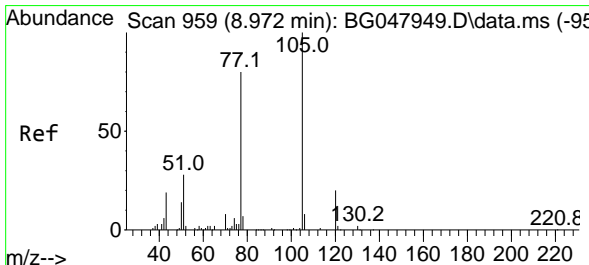
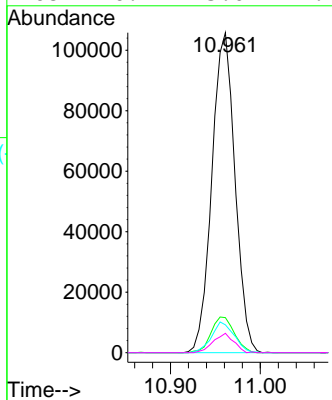
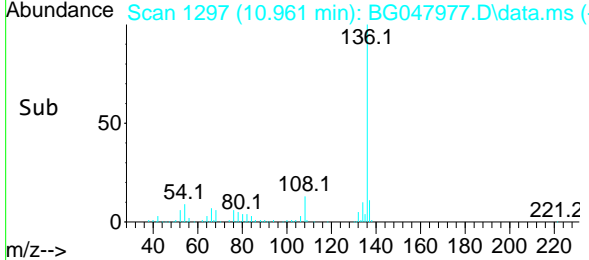
#21
 Naphthalene-d8
 Concen: 20.00 ng
 RT: 10.961 min Scan# 1297
 Delta R.T. -0.003 min
 Lab File: BG047977.D
 Acq: 22 Jan 2021 14:10

Instrument :
 BNA_G
ClientSampled :
 PB134267BS

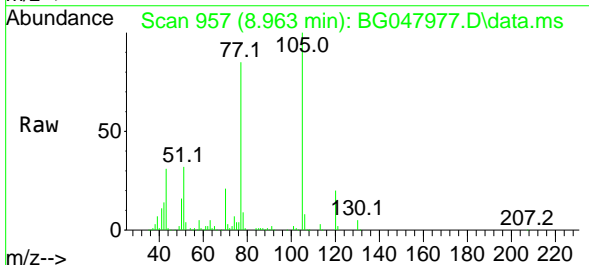


Tgt Ion:136 Resp: 188983

Ion	Ratio	Lower	Upper
136	100		
137	11.0	9.1	13.7
54	8.7	6.2	9.4
68	6.1	5.0	7.4

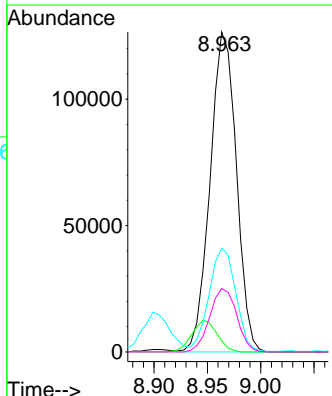
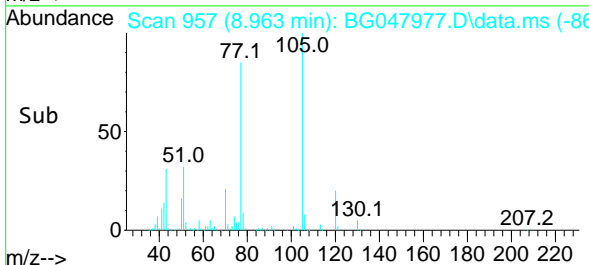


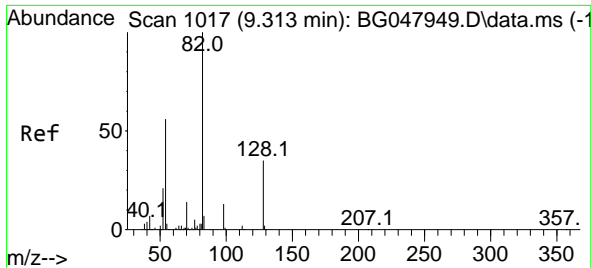
#22
 Acetophenone
 Concen: 38.86 ng
 RT: 8.963 min Scan# 957
 Delta R.T. -0.009 min
 Lab File: BG047977.D
 Acq: 22 Jan 2021 14:10



Tgt Ion:105 Resp: 216785

Ion	Ratio	Lower	Upper
105	100		
71	3.4	2.7	4.1
51	32.4	21.0	31.6#
120	19.8	19.3	28.9

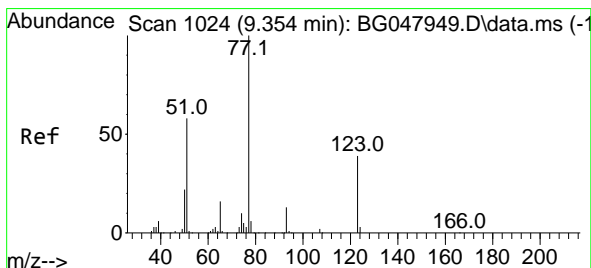
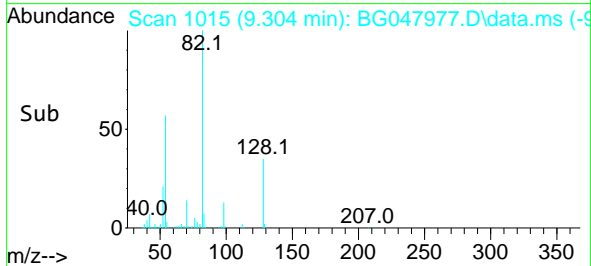
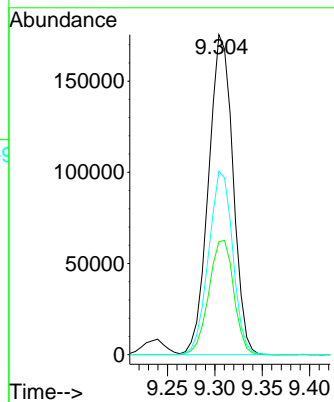
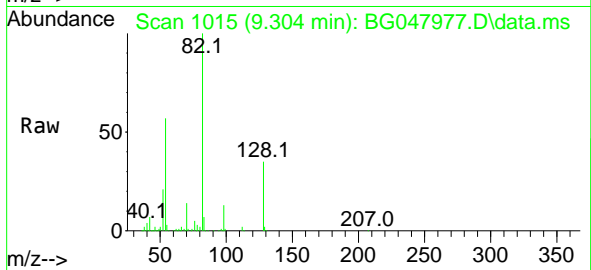




#23
 Nitrobenzene-d5
 Concen: 73.21 ng
 RT: 9.304 min Scan# 1015
 Delta R.T. -0.009 min
 Lab File: BG047977.D
 Acq: 22 Jan 2021 14:10

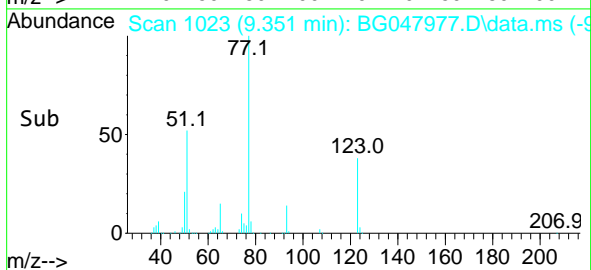
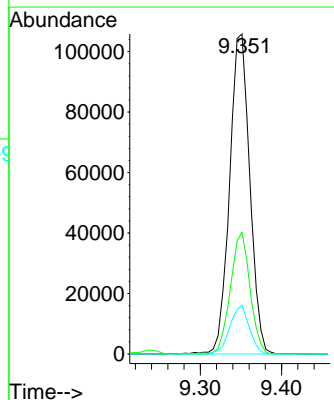
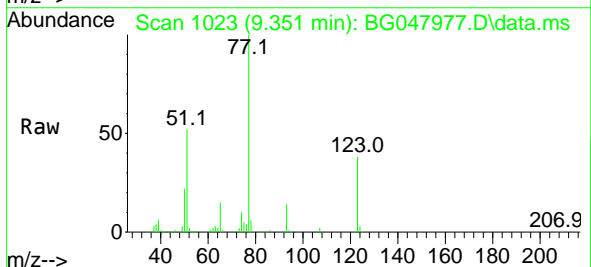
Instrument :
 BNA_G
 ClientSampleId :
 PB134267BS

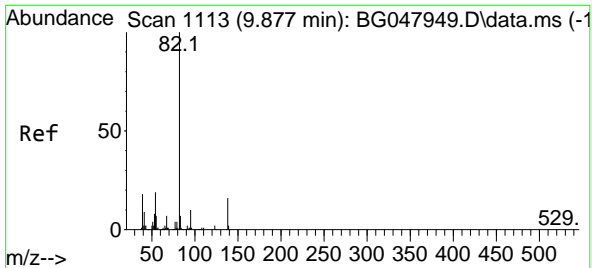
Tgt Ion: 82 Resp: 314647
 Ion Ratio Lower Upper
 82 100
 128 35.3 37.0 55.6#
 54 57.4 39.0 58.4



#24
 Nitrobenzene
 Concen: 42.07 ng
 RT: 9.351 min Scan# 1023
 Delta R.T. -0.003 min
 Lab File: BG047977.D
 Acq: 22 Jan 2021 14:10

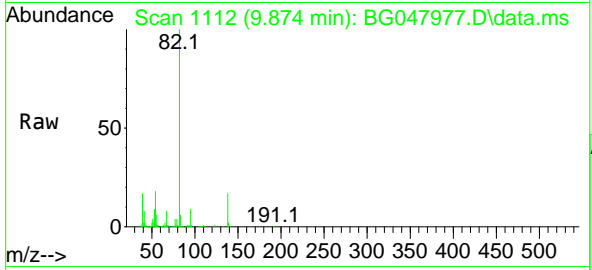
Tgt Ion: 77 Resp: 182568
 Ion Ratio Lower Upper
 77 100
 123 38.1 39.7 59.5#
 65 15.3 10.4 15.6





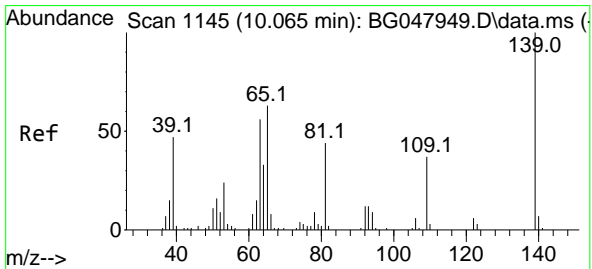
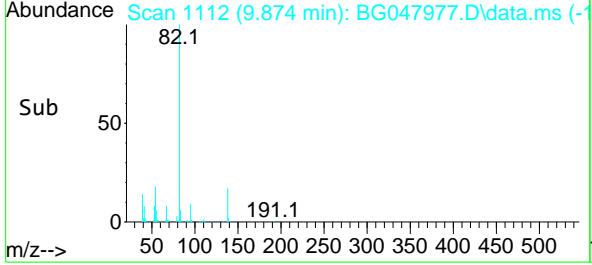
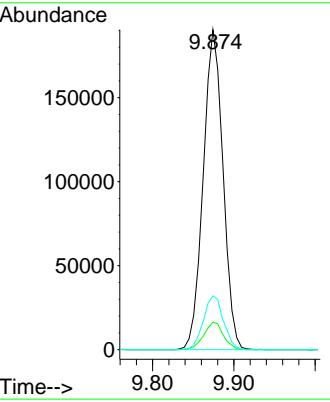
#25
 Isophorone
 Concen: 39.88 ng
 RT: 9.874 min Scan# 1112
 Delta R.T. -0.003 min
 Lab File: BG047977.D
 Acq: 22 Jan 2021 14:10

Instrument :
 BNA_G
ClientSampled :
 PB134267BS

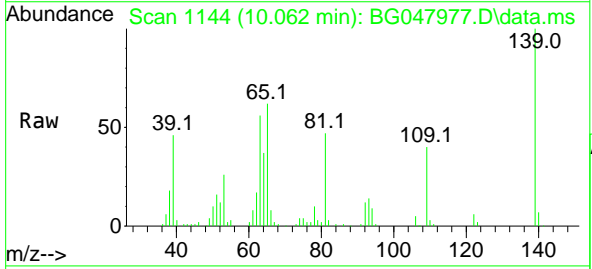


Tgt Ion: 82 Resp: 321881

Ion	Ratio	Lower	Upper
82	100		
95	8.6	5.6	8.4#
138	16.8	15.8	23.6

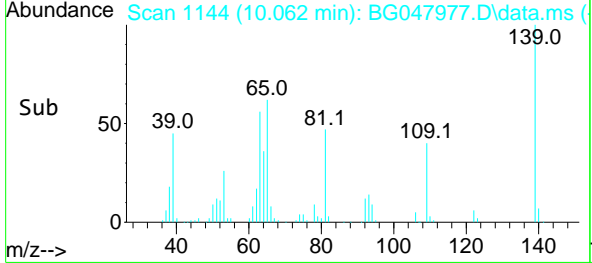
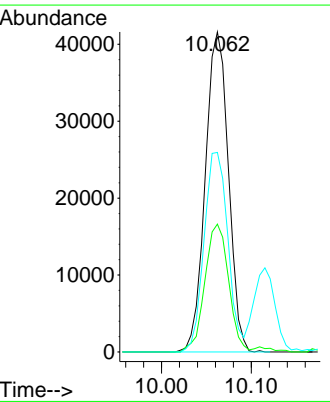


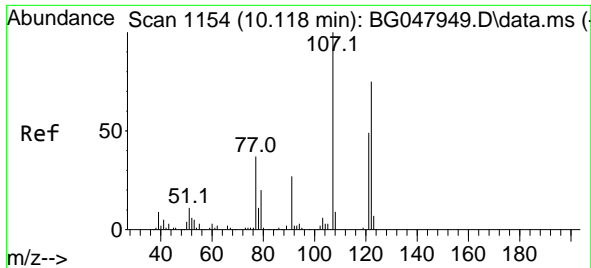
#26
 2-Nitrophenol
 Concen: 45.92 ng
 RT: 10.062 min Scan# 1144
 Delta R.T. -0.003 min
 Lab File: BG047977.D
 Acq: 22 Jan 2021 14:10



Tgt Ion: 139 Resp: 74410

Ion	Ratio	Lower	Upper
139	100		
109	39.9	20.7	31.1#
65	62.4	36.1	54.1#

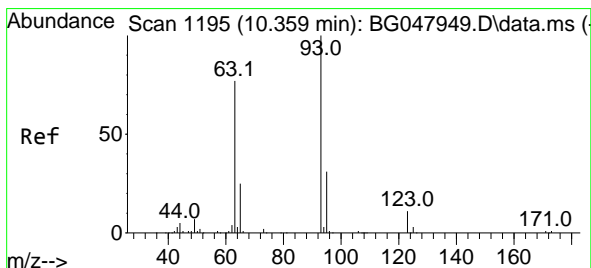
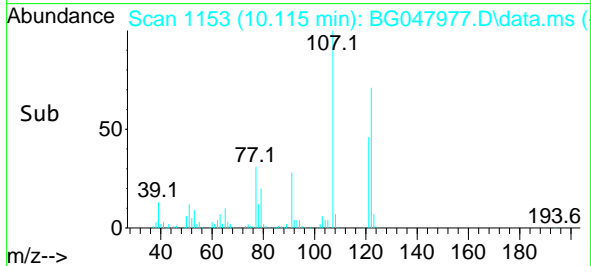
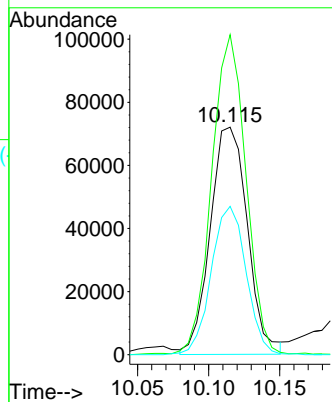
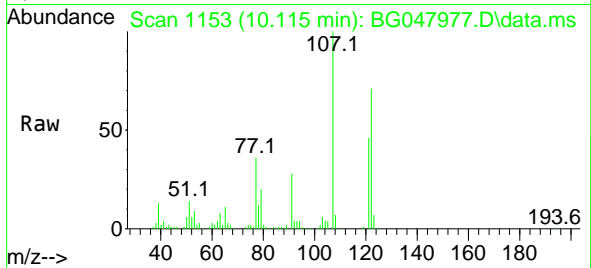




#27
 2,4-Dimethylphenol
 Concen: 48.59 ng
 RT: 10.115 min Scan# 1153
 Delta R.T. -0.003 min
 Lab File: BG047977.D
 Acq: 22 Jan 2021 14:10

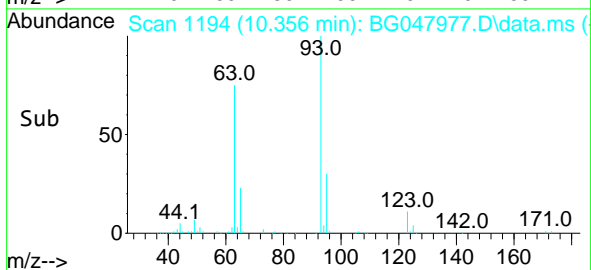
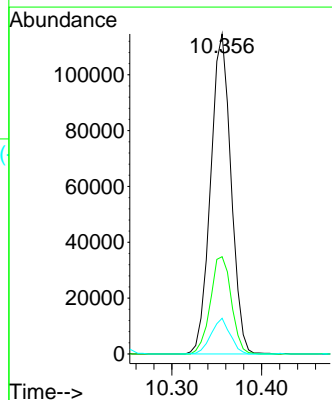
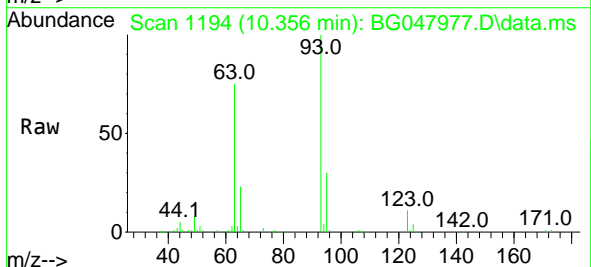
Instrument :
 BNA_G
 ClientSampleId :
 PB134267BS

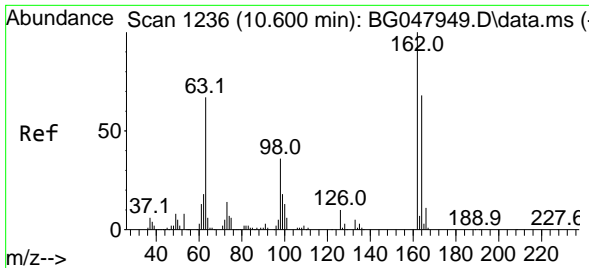
Tgt Ion:122 Resp: 131114
 Ion Ratio Lower Upper
 122 100
 107 140.6 89.2 133.8#
 121 65.2 46.9 70.3



#28
 bis(2-Chloroethoxy)methane
 Concen: 37.59 ng
 RT: 10.356 min Scan# 1194
 Delta R.T. -0.003 min
 Lab File: BG047977.D
 Acq: 22 Jan 2021 14:10

Tgt Ion: 93 Resp: 180473
 Ion Ratio Lower Upper
 93 100
 95 30.4 26.5 39.7
 123 11.2 9.4 14.0

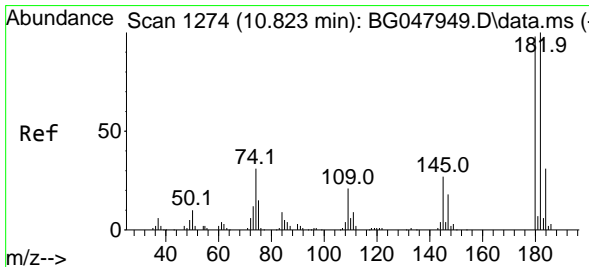
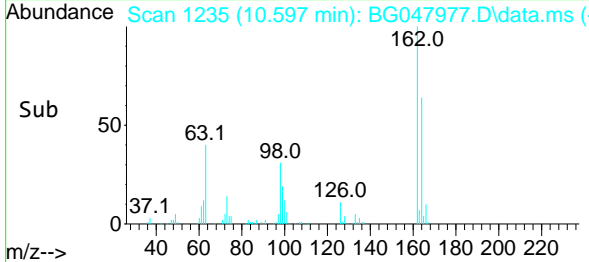
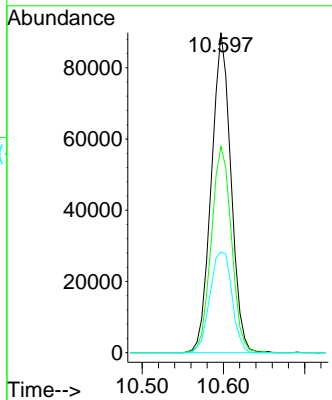
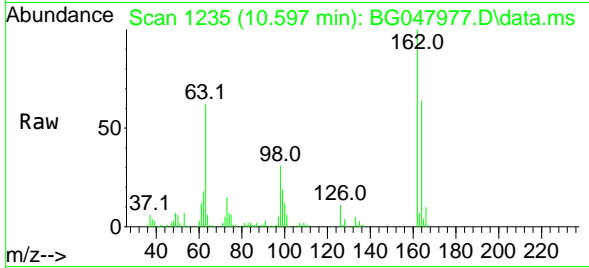




#29
 2,4-Dichlorophenol
 Concen: 44.71 ng
 RT: 10.597 min Scan# 1235
 Delta R.T. -0.003 min
 Lab File: BG047977.D
 Acq: 22 Jan 2021 14:10

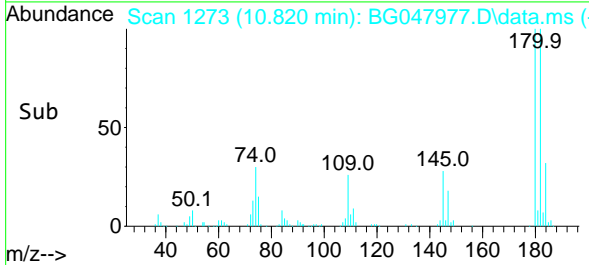
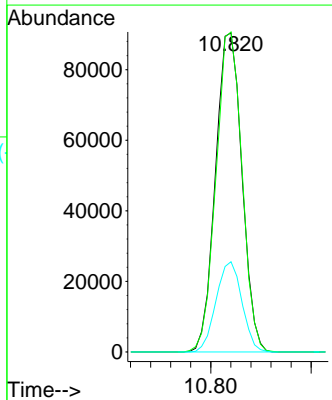
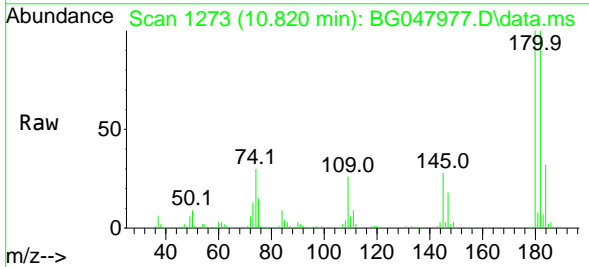
Instrument :
 BNA_G
ClientSampled :
 PB134267BS

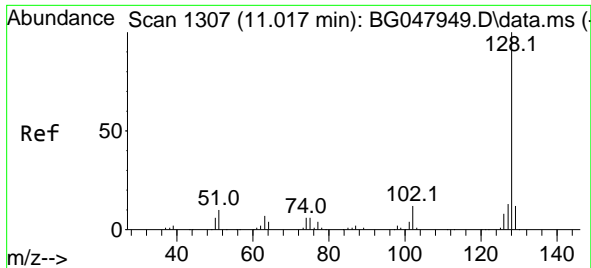
Tgt Ion	Resp	Lower	Upper
162	150474		
162	100		
164	64.4	45.6	85.6
98	31.5	11.0	51.0



#30
 1,2,4-Trichlorobenzene
 Concen: 38.32 ng
 RT: 10.820 min Scan# 1273
 Delta R.T. -0.003 min
 Lab File: BG047977.D
 Acq: 22 Jan 2021 14:10

Tgt Ion	Resp	Lower	Upper
180	164915		
180	100		
182	100.3	76.9	115.3
145	28.3	21.4	32.0



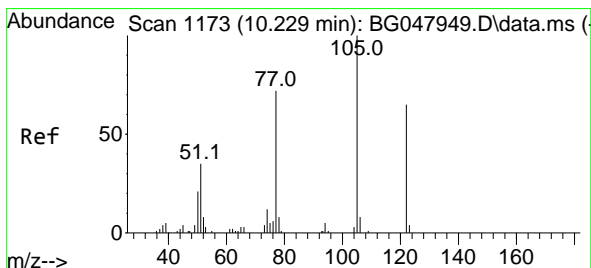
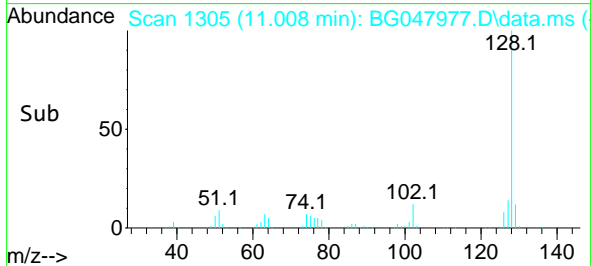
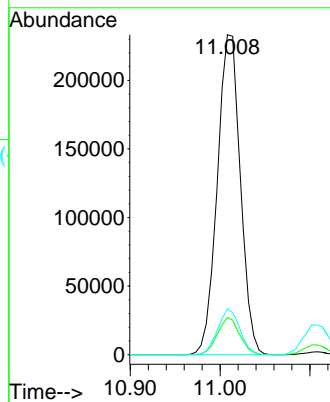
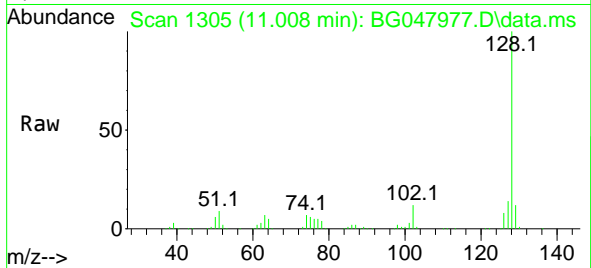


#31
 Naphthalene
 Concen: 39.72 ng
 RT: 11.008 min Scan# 1305
 Delta R.T. -0.009 min
 Lab File: BG047977.D
 Acq: 22 Jan 2021 14:10

Instrument :
 BNA_G
 ClientSampled :
 PB134267BS

Tgt Ion:128 Resp: 415963

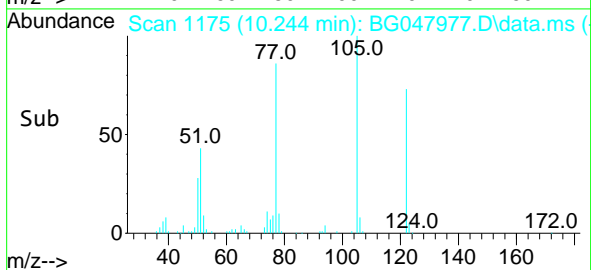
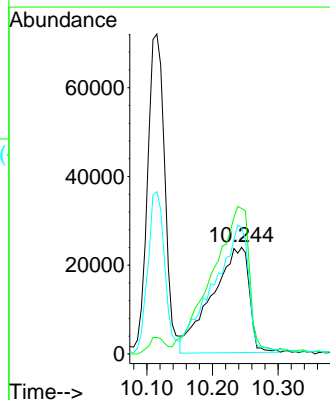
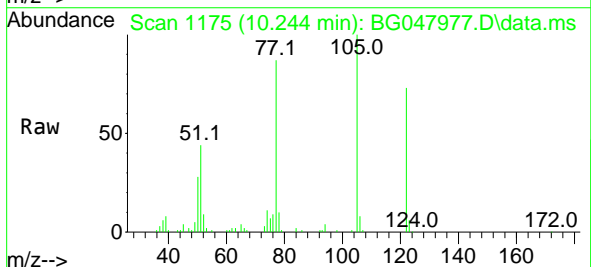
Ion	Ratio	Lower	Upper
128	100		
129	11.7	9.0	13.6
127	14.3	11.0	16.4

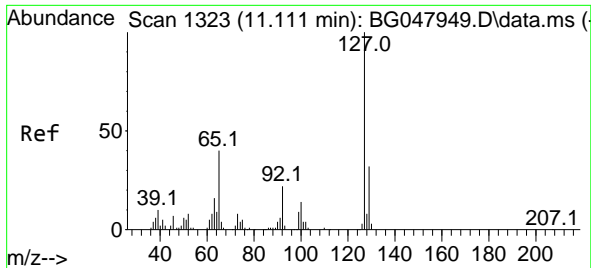


#32
 Benzoic acid
 Concen: 43.29 ng
 RT: 10.244 min Scan# 1175
 Delta R.T. 0.015 min
 Lab File: BG047977.D
 Acq: 22 Jan 2021 14:10

Tgt Ion:122 Resp: 93790

Ion	Ratio	Lower	Upper
122	100		
105	136.5	103.7	143.7
77	118.4	63.0	103.0#

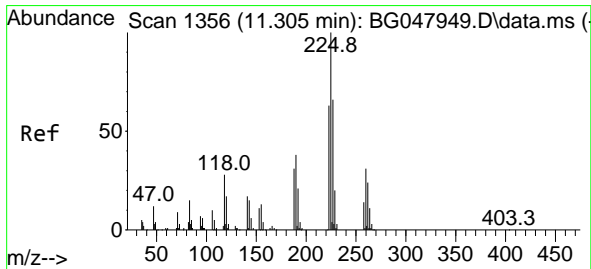
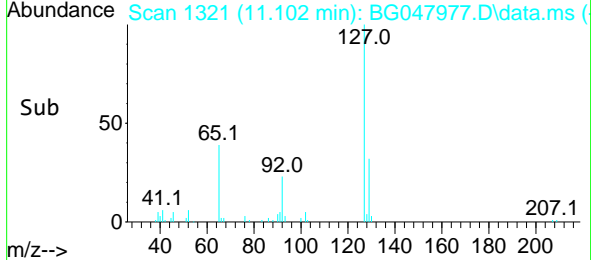
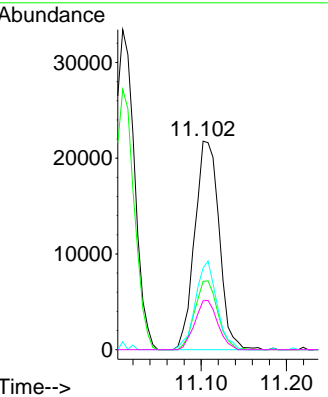
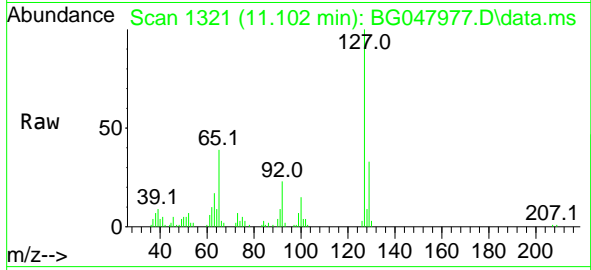




#33
 4-Chloroaniline
 Concen: 9.35 ng
 RT: 11.102 min Scan# 1321
 Delta R.T. -0.009 min
 Lab File: BG047977.D
 Acq: 22 Jan 2021 14:10

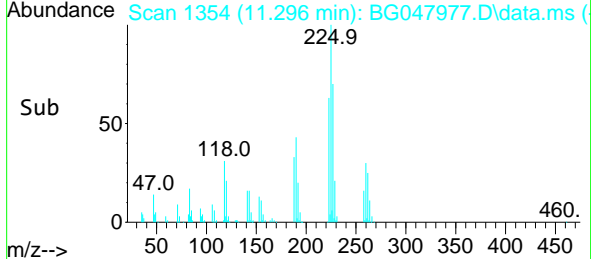
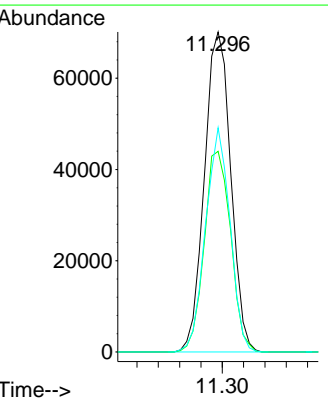
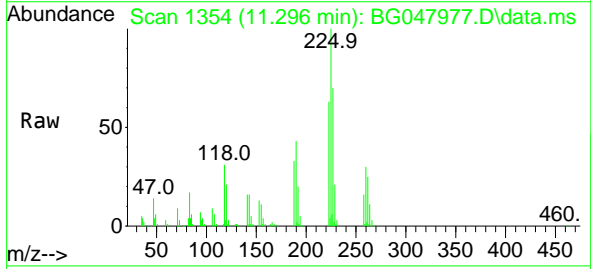
Instrument :
 BNA_G
ClientSampled :
 PB134267BS

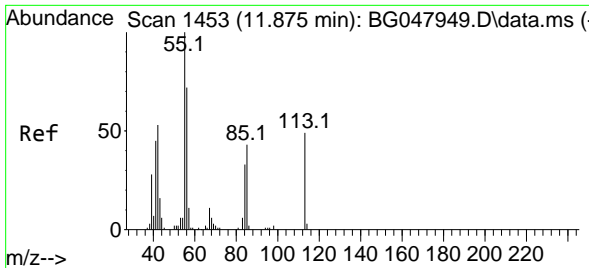
Tgt Ion	Resp	Lower	Upper
127	43338		
127	100		
129	32.7	26.8	40.2
65	39.1	23.8	35.6#
92	23.4	14.5	21.7#



#34
 Hexachlorobutadiene
 Concen: 37.47 ng
 RT: 11.296 min Scan# 1354
 Delta R.T. -0.009 min
 Lab File: BG047977.D
 Acq: 22 Jan 2021 14:10

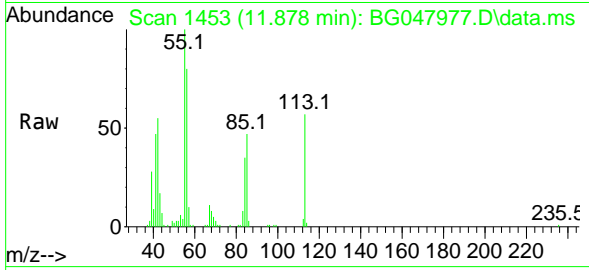
Tgt Ion	Resp	Lower	Upper
225	120169		
225	100		
223	62.7	49.5	74.3
227	70.0	52.0	78.0



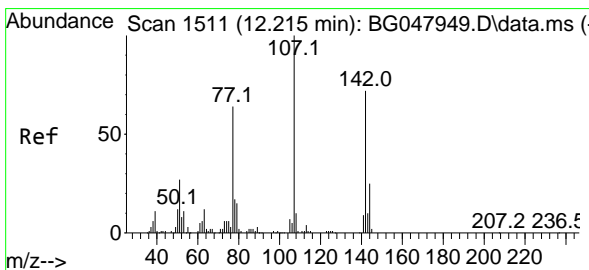
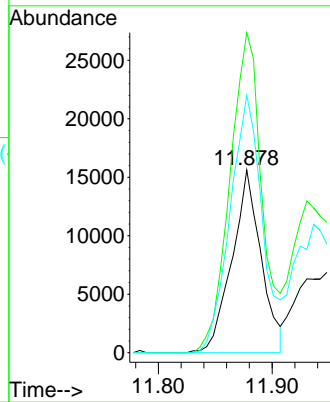
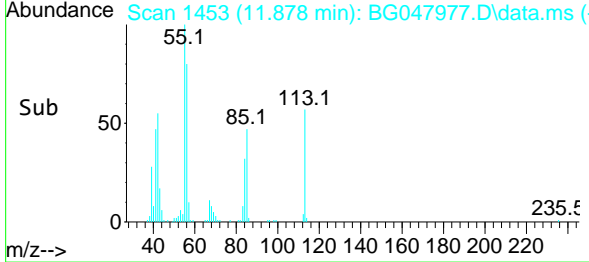


#35
 Caprolactam
 Concen: 21.98 ng
 RT: 11.878 min Scan# 1453
 Delta R.T. 0.003 min
 Lab File: BG047977.D
 Acq: 22 Jan 2021 14:10

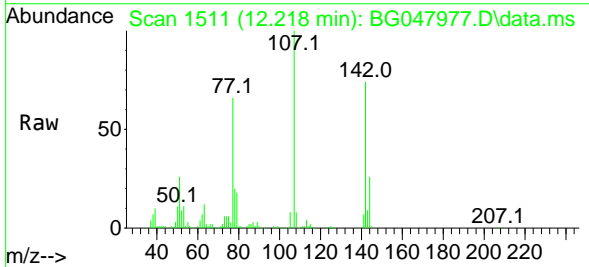
Instrument :
 BNA_G
 ClientSampled :
 PB134267BS



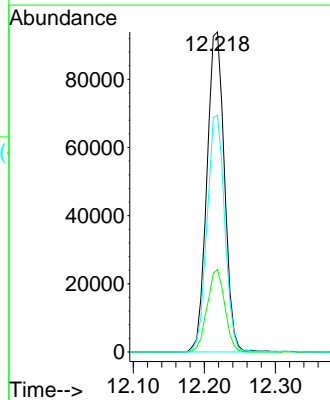
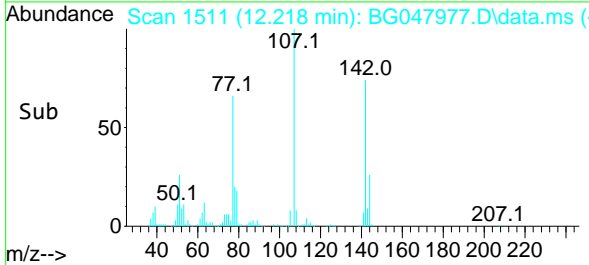
Tgt Ion:113 Resp: 27867
 Ion Ratio Lower Upper
 113 100
 55 175.1 149.2 189.2
 56 140.9 107.2 147.2

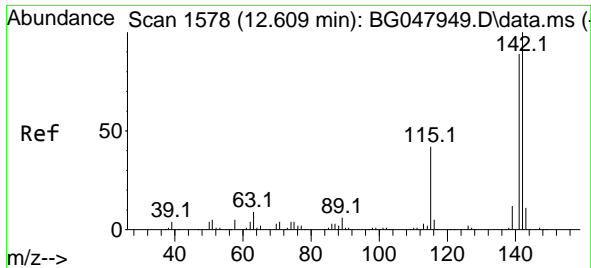


#36
 4-Chloro-3-methylphenol
 Concen: 43.10 ng
 RT: 12.218 min Scan# 1511
 Delta R.T. 0.003 min
 Lab File: BG047977.D
 Acq: 22 Jan 2021 14:10



Tgt Ion:107 Resp: 161435
 Ion Ratio Lower Upper
 107 100
 144 25.8 22.5 33.7
 142 74.1 70.8 106.2

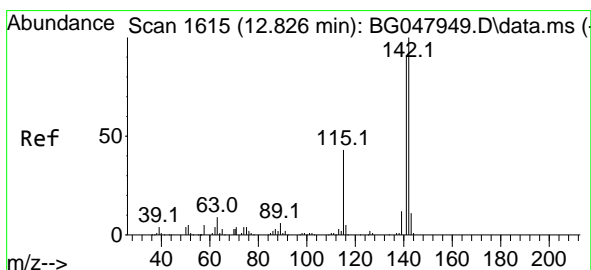
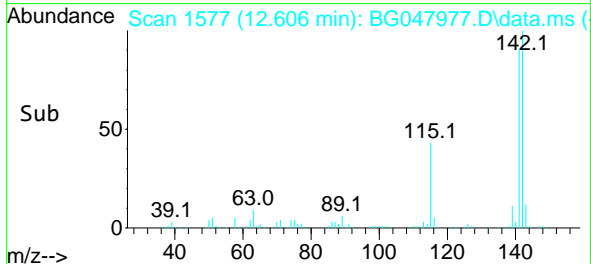
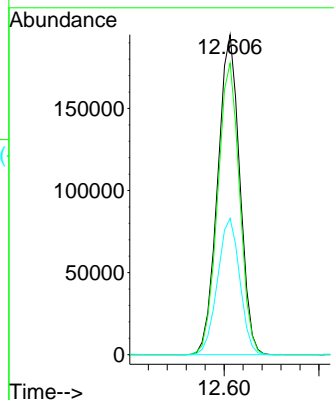
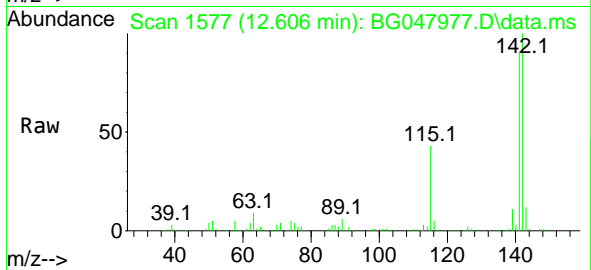




#37
 2-Methylnaphthalene
 Concen: 39.61 ng
 RT: 12.606 min Scan# 1577
 Delta R.T. -0.003 min
 Lab File: BG047977.D
 Acq: 22 Jan 2021 14:10

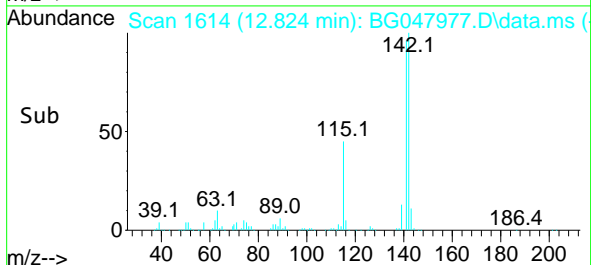
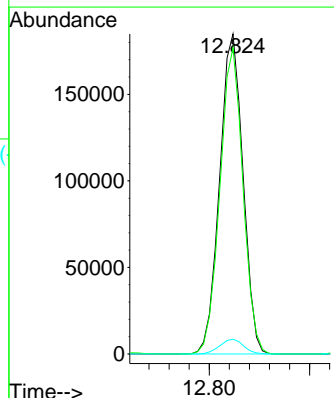
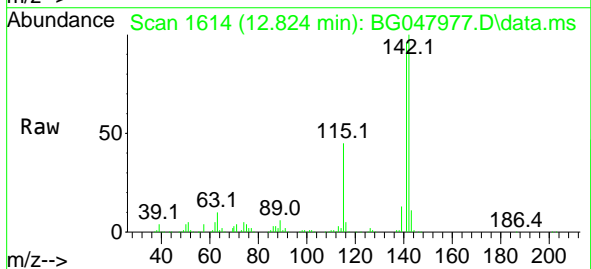
Instrument :
 BNA_G
 ClientSampled :
 PB134267BS

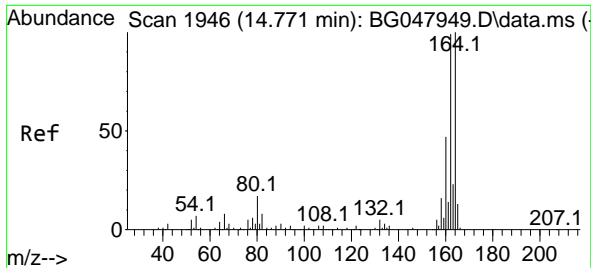
Tgt Ion:142 Resp: 314832
 Ion Ratio Lower Upper
 142 100
 141 91.2 71.6 107.4
 115 42.6 25.4 38.2#



#38
 1-Methylnaphthalene
 Concen: 40.04 ng
 RT: 12.824 min Scan# 1614
 Delta R.T. -0.003 min
 Lab File: BG047977.D
 Acq: 22 Jan 2021 14:10

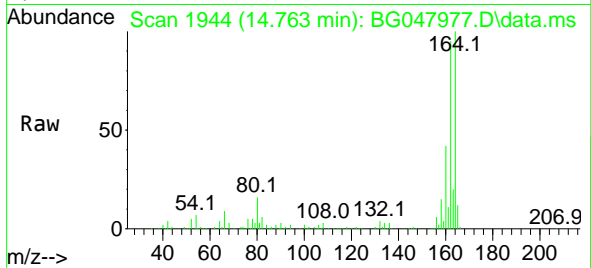
Tgt Ion:142 Resp: 297933
 Ion Ratio Lower Upper
 142 100
 141 95.7 75.4 113.2
 116 4.6 2.9 4.3#



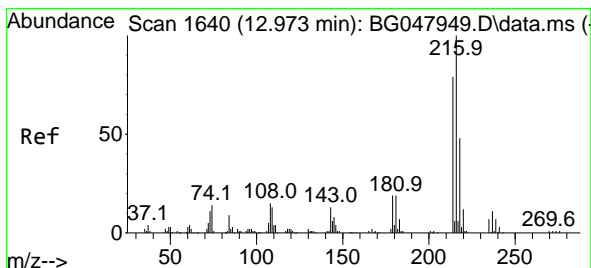
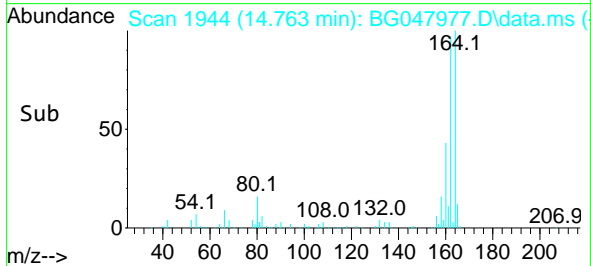
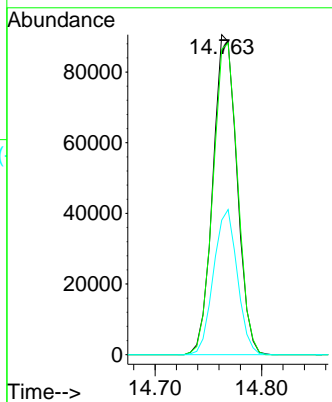


#39
 Acenaphthene-d10
 Concen: 20.00 ng
 RT: 14.763 min Scan# 1944
 Delta R.T. -0.009 min
 Lab File: BG047977.D
 Acq: 22 Jan 2021 14:10

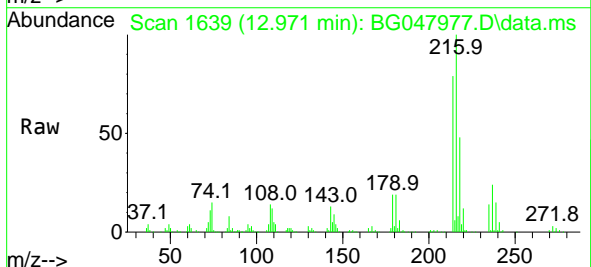
Instrument :
 BNA_G
 ClientSampleId :
 PB134267BS



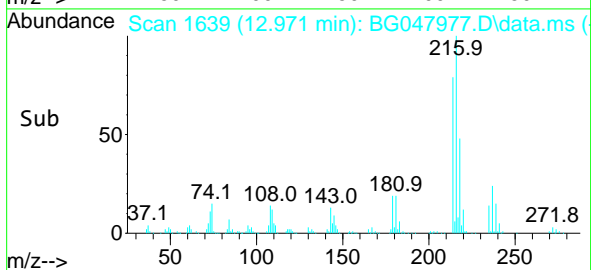
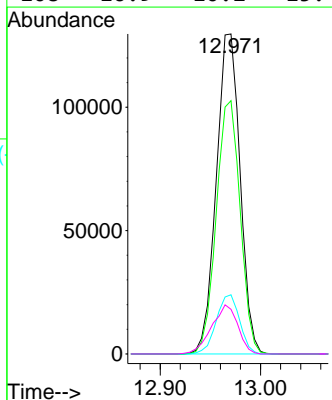
Tgt Ion:164 Resp: 142084
 Ion Ratio Lower Upper
 164 100
 162 95.4 82.3 123.5
 160 42.0 35.3 52.9

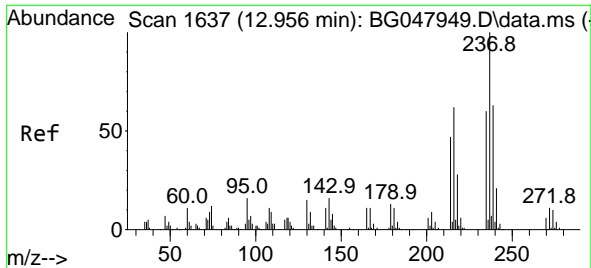


#40
 1,2,4,5-Tetrachlorobenzene
 Concen: 39.38 ng
 RT: 12.971 min Scan# 1639
 Delta R.T. -0.003 min
 Lab File: BG047977.D
 Acq: 22 Jan 2021 14:10



Tgt Ion:216 Resp: 213585
 Ion Ratio Lower Upper
 216 100
 214 79.4 61.9 92.9
 179 18.1 14.8 22.2
 108 16.9 10.2 15.4#

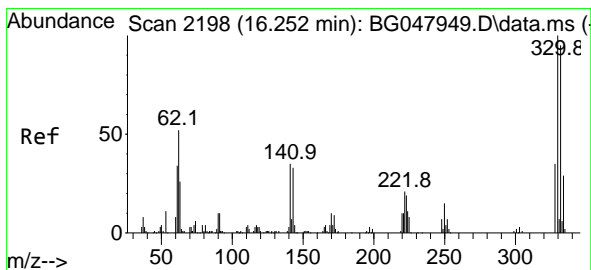
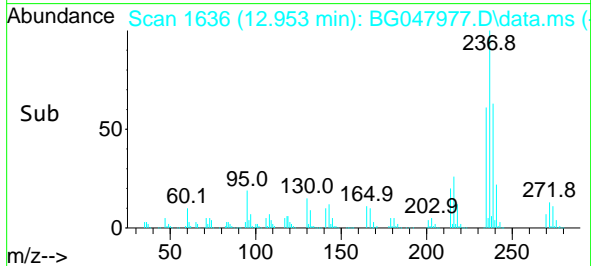
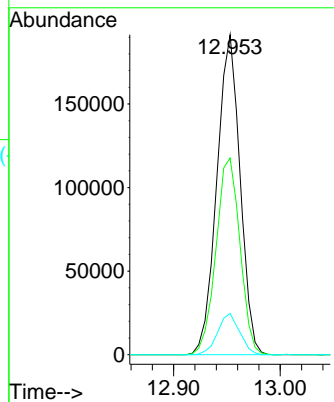
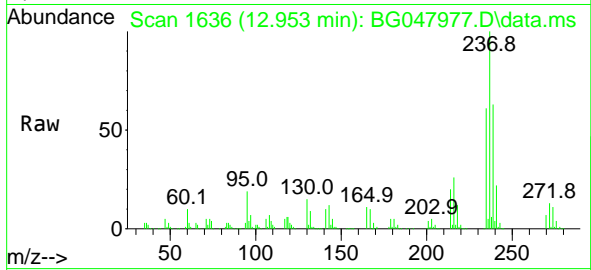




#41
 Hexachlorocyclopentadiene
 Concen: 99.70 ng
 RT: 12.953 min Scan# 1636
 Delta R.T. -0.003 min
 Lab File: BG047977.D
 Acq: 22 Jan 2021 14:10

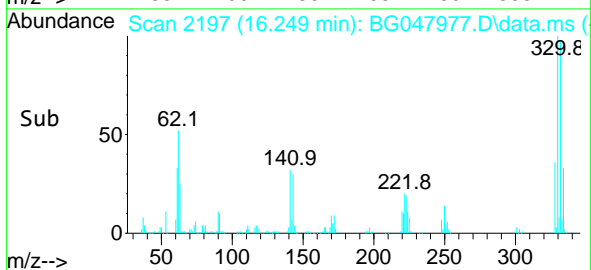
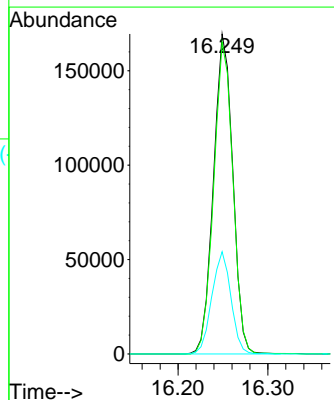
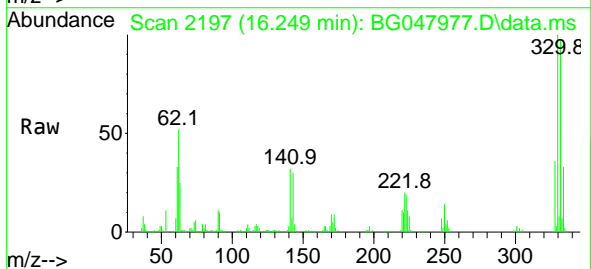
Instrument :
 BNA_G
 ClientSampled :
 PB134267BS

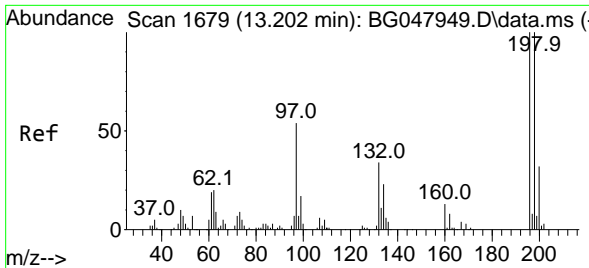
Tgt Ion	Resp	Lower	Upper
237	100		
235	61.5	43.1	83.1
272	12.9	0.0	33.1



#42
 2,4,6-Tribromophenol
 Concen: 111.22 ng
 RT: 16.249 min Scan# 2197
 Delta R.T. -0.003 min
 Lab File: BG047977.D
 Acq: 22 Jan 2021 14:10

Tgt Ion	Resp	Lower	Upper
330	100		
332	96.8	76.5	114.7
141	31.6	26.0	39.0

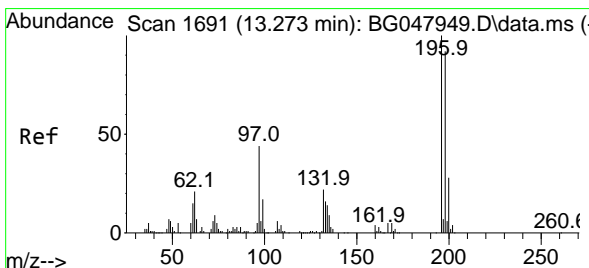
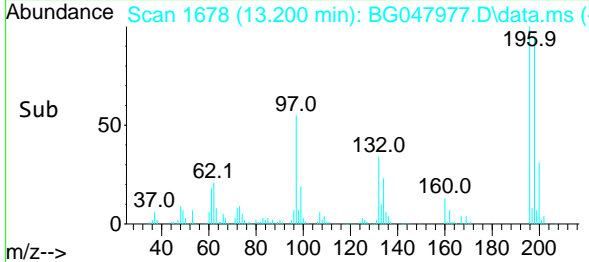
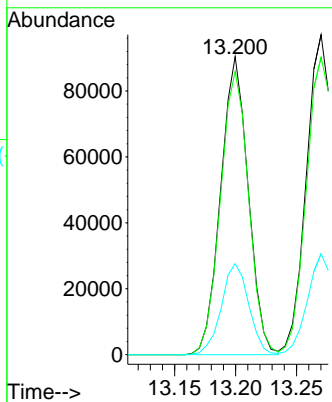
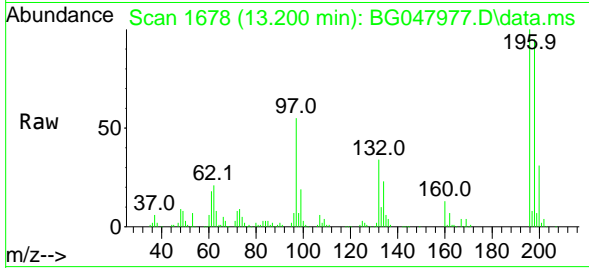




#43
 2,4,6-Trichlorophenol
 Concen: 41.05 ng
 RT: 13.200 min Scan# 1678
 Delta R.T. -0.003 min
 Lab File: BG047977.D
 Acq: 22 Jan 2021 14:10

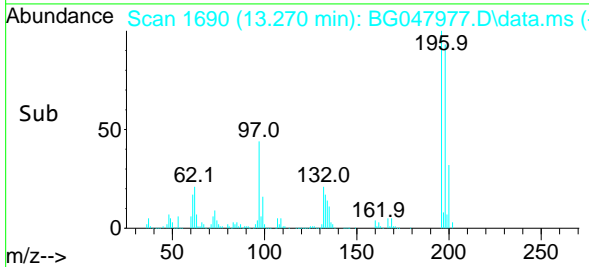
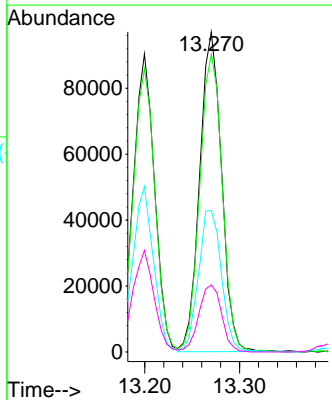
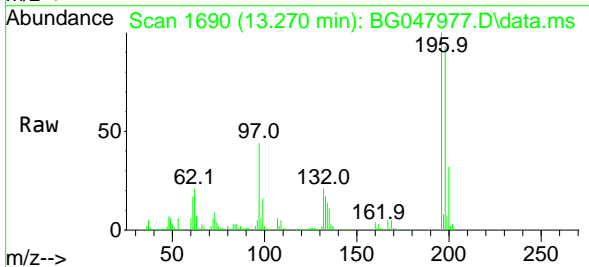
Instrument :
 BNA_G
ClientSampled :
 PB134267BS

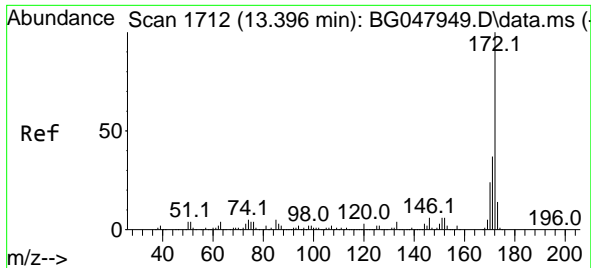
Tgt Ion	Resp	Lower	Upper
196	142171		
196	100		
198	95.0	74.9	112.3
200	30.6	25.3	37.9



#44
 2,4,5-Trichlorophenol
 Concen: 43.74 ng
 RT: 13.270 min Scan# 1690
 Delta R.T. -0.003 min
 Lab File: BG047977.D
 Acq: 22 Jan 2021 14:10

Tgt Ion	Resp	Lower	Upper
196	155163		
196	100		
198	92.9	77.6	116.4
97	44.2	28.6	43.0#
132	20.9	17.8	26.8

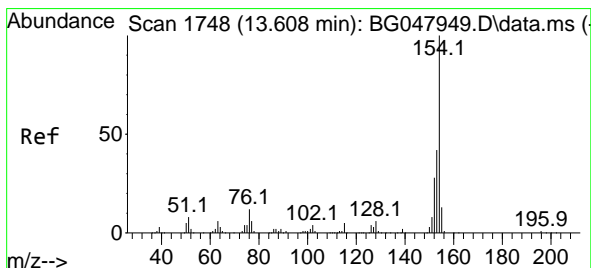
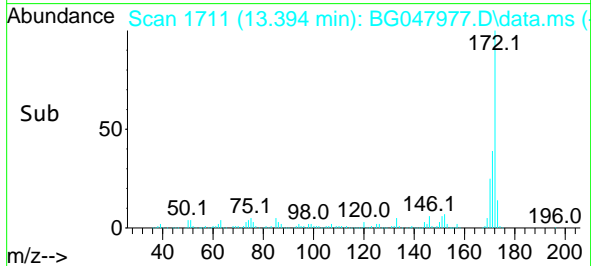
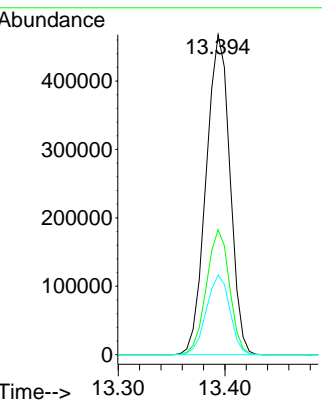
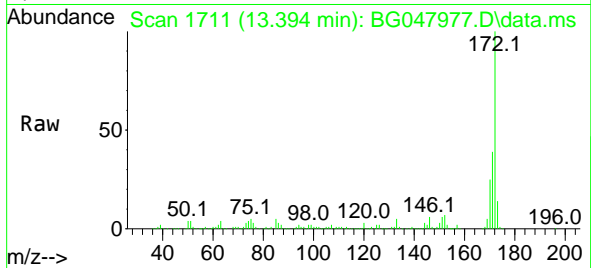




#45
 2-Fluorobiphenyl
 Concen: 68.16 ng
 RT: 13.394 min Scan# 1711
 Delta R.T. -0.003 min
 Lab File: BG047977.D
 Acq: 22 Jan 2021 14:10

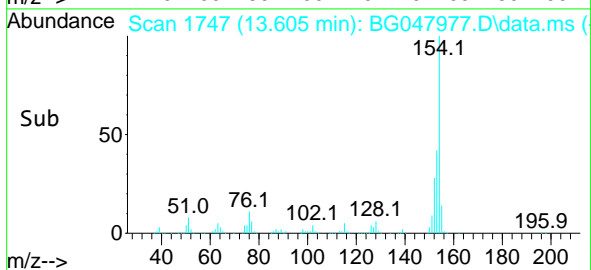
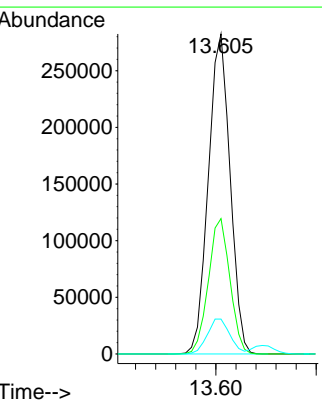
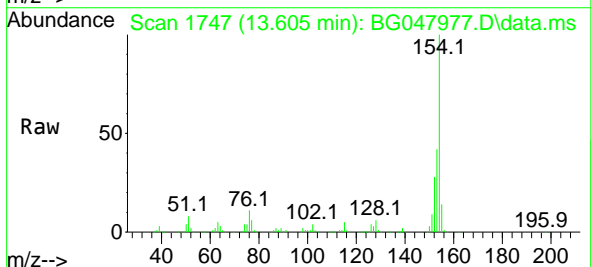
Instrument :
 BNA_G
ClientSampled :
 PB134267BS

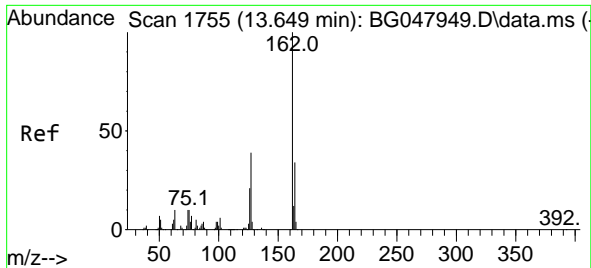
Tgt Ion	Resp	Lower	Upper
172	100		
171	39.0	31.3	46.9
170	24.9	20.8	31.2



#46
 1,1'-Biphenyl
 Concen: 39.15 ng
 RT: 13.605 min Scan# 1747
 Delta R.T. -0.003 min
 Lab File: BG047977.D
 Acq: 22 Jan 2021 14:10

Tgt Ion	Resp	Lower	Upper
154	100		
153	42.3	22.6	62.6
76	10.9	0.0	32.6

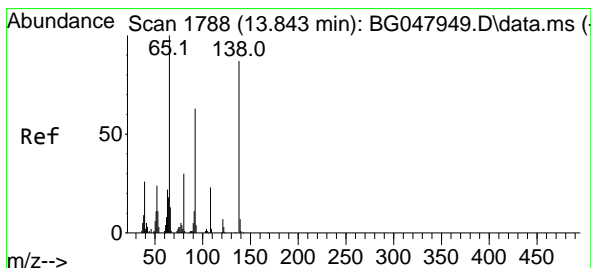
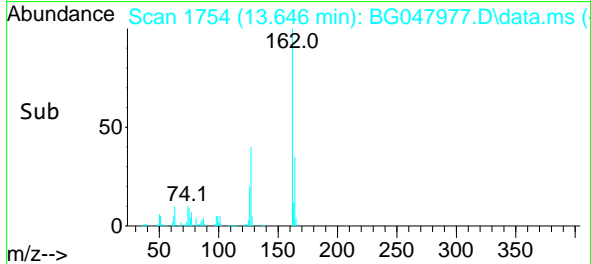
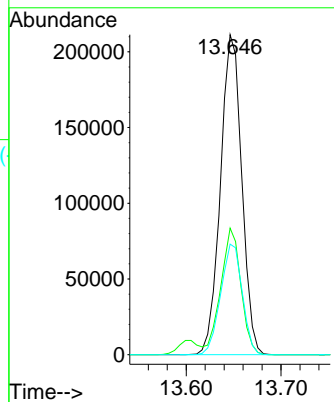
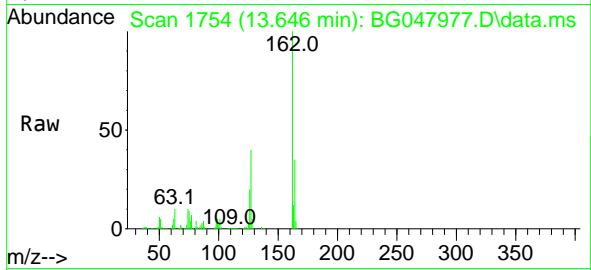




#47
 2-Chloronaphthalene
 Concen: 37.63 ng
 RT: 13.646 min Scan# 1754
 Delta R.T. -0.003 min
 Lab File: BG047977.D
 Acq: 22 Jan 2021 14:10

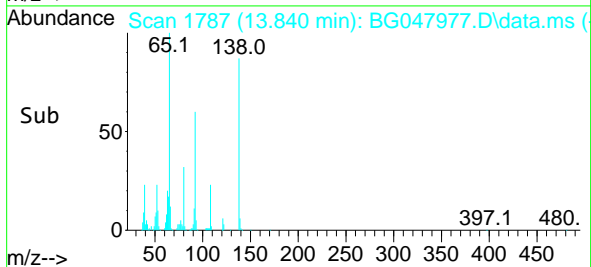
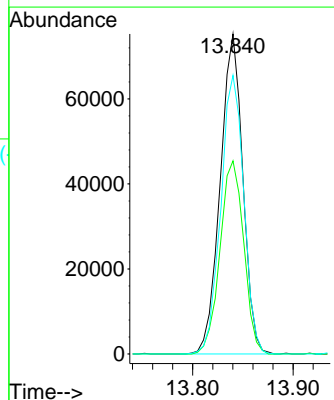
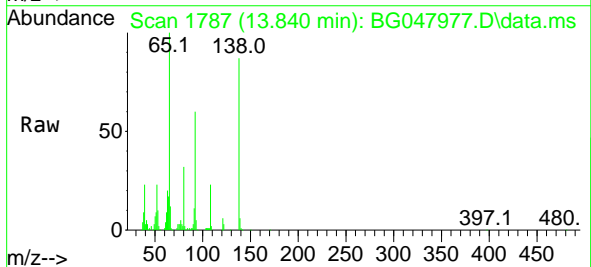
Instrument :
 BNA_G
 ClientSampled :
 PB134267BS

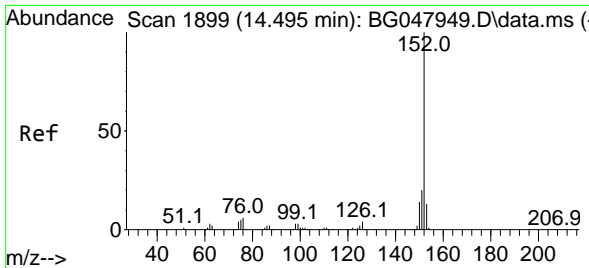
Tgt Ion	Resp	Lower	Upper
162	100		
127	39.6	27.8	41.6
164	34.6	27.0	40.4



#48
 2-Nitroaniline
 Concen: 38.35 ng
 RT: 13.840 min Scan# 1787
 Delta R.T. -0.003 min
 Lab File: BG047977.D
 Acq: 22 Jan 2021 14:10

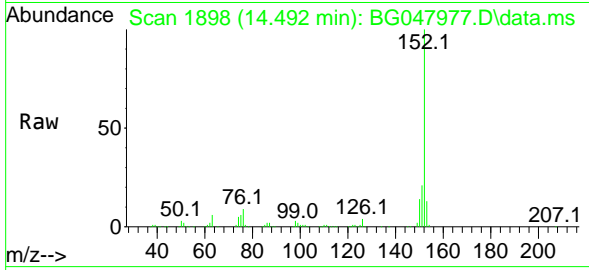
Tgt Ion	Resp	Lower	Upper
65	100		
92	60.3	58.6	88.0
138	87.1	98.2	147.4#



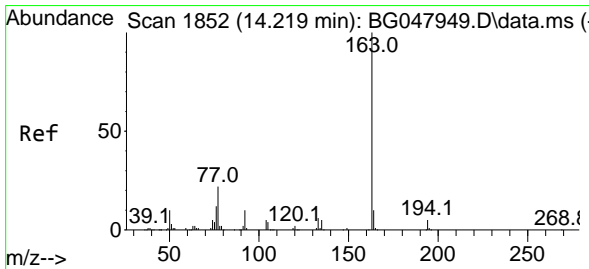
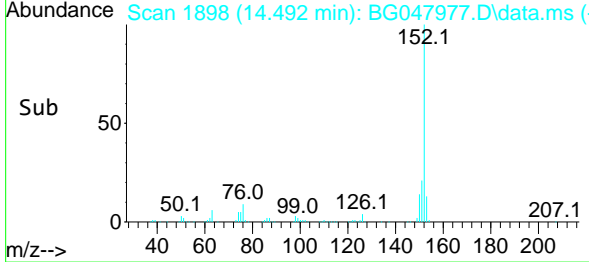
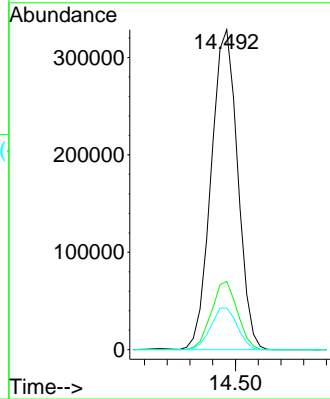


#49
 Acenaphthylene
 Concen: 38.53 ng
 RT: 14.492 min Scan# 1898
 Delta R.T. -0.003 min
 Lab File: BG047977.D
 Acq: 22 Jan 2021 14:10

Instrument :
 BNA_G
 ClientSampled :
 PB134267BS

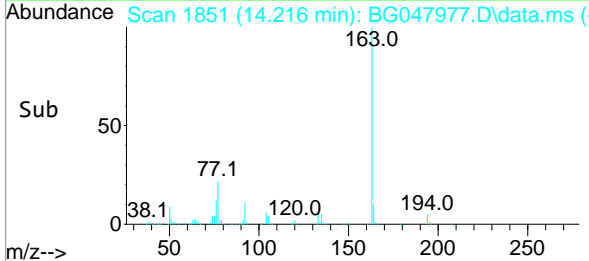
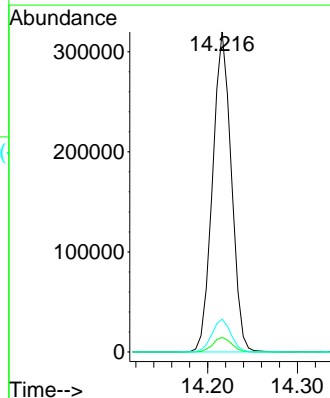
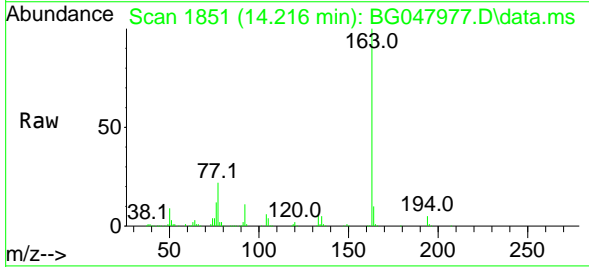


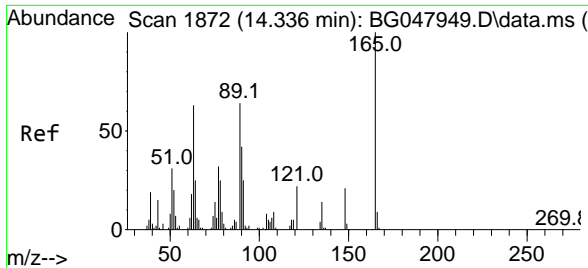
Tgt Ion:152 Resp: 530375
 Ion Ratio Lower Upper
 152 100
 151 21.3 17.4 26.0
 153 13.0 11.5 17.3



#50
 Dimethylphthalate
 Concen: 37.52 ng
 RT: 14.216 min Scan# 1851
 Delta R.T. -0.003 min
 Lab File: BG047977.D
 Acq: 22 Jan 2021 14:10

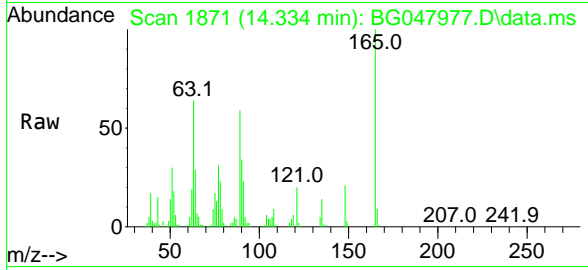
Tgt Ion:163 Resp: 463385
 Ion Ratio Lower Upper
 163 100
 194 4.5 3.8 5.8
 164 10.3 8.8 13.2



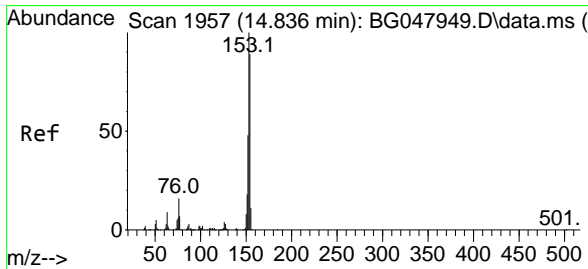
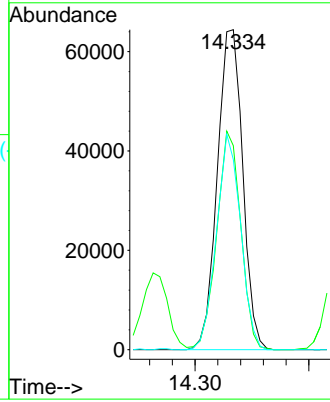
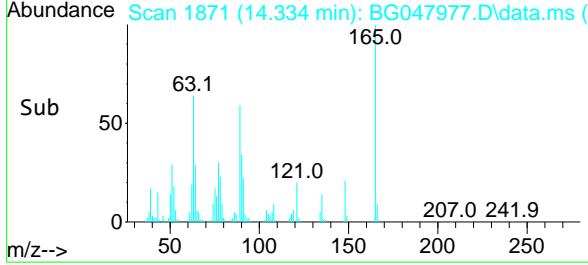


#51
 2,6-Dinitrotoluene
 Concen: 41.97 ng
 RT: 14.334 min Scan# 1871
 Delta R.T. -0.003 min
 Lab File: BG047977.D
 Acq: 22 Jan 2021 14:10

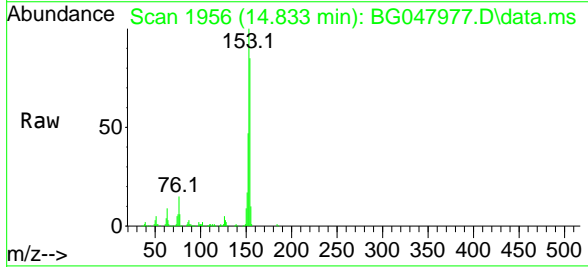
Instrument :
 BNA_G
 ClientSampleId :
 PB134267BS



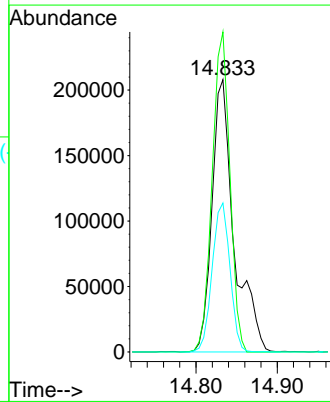
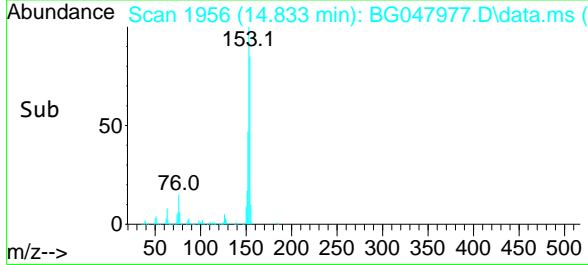
Tgt Ion	Resp	Lower	Upper
165	99786		
165	100		
63	63.7	33.7	50.5#
89	59.5	36.6	54.8#

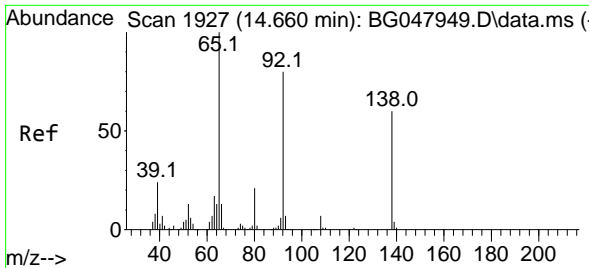


#52
 Acenaphthene
 Concen: 43.15 ng
 RT: 14.833 min Scan# 1956
 Delta R.T. -0.003 min
 Lab File: BG047977.D
 Acq: 22 Jan 2021 14:10



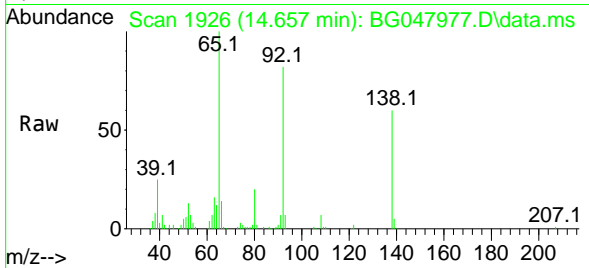
Tgt Ion	Resp	Lower	Upper
154	393919		
154	100		
153	117.5	90.3	135.5
152	54.7	43.8	65.8



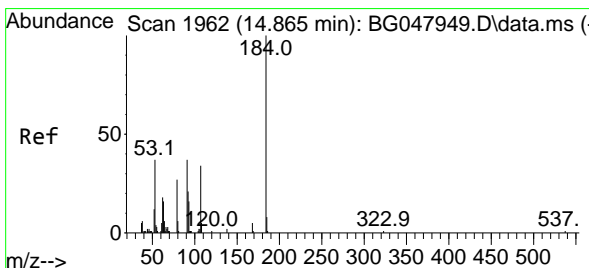
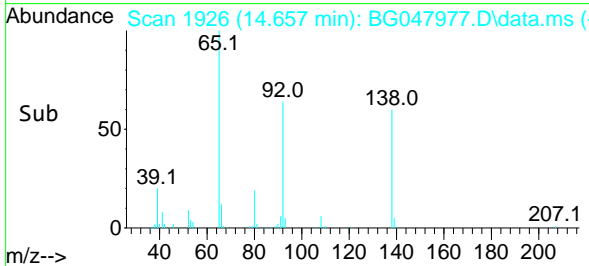
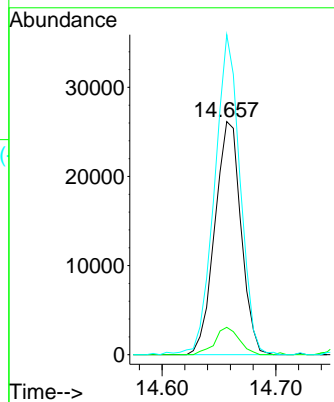


#53
 3-Nitroaniline
 Concen: 16.15 ng
 RT: 14.657 min Scan# 1926
 Delta R.T. -0.003 min
 Lab File: BG047977.D
 Acq: 22 Jan 2021 14:10

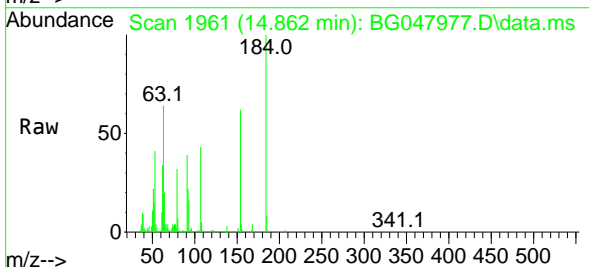
Instrument :
 BNA_G
 ClientSampled :
 PB134267BS



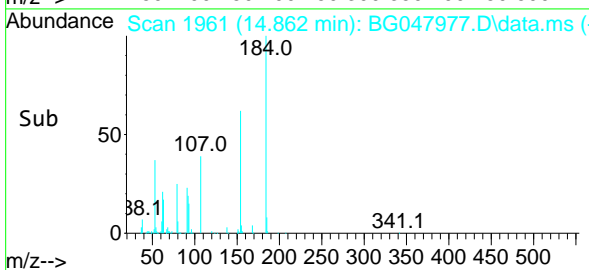
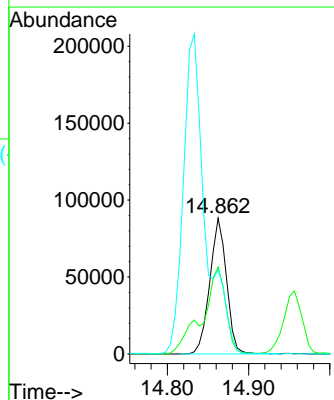
Tgt Ion:138 Resp: 41905
 Ion Ratio Lower Upper
 138 100
 108 11.7 7.4 11.0#
 92 137.2 85.2 127.8#

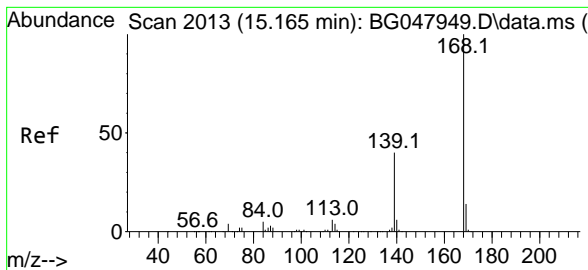


#54
 2,4-Dinitrophenol
 Concen: 92.68 ng
 RT: 14.862 min Scan# 1961
 Delta R.T. -0.003 min
 Lab File: BG047977.D
 Acq: 22 Jan 2021 14:10



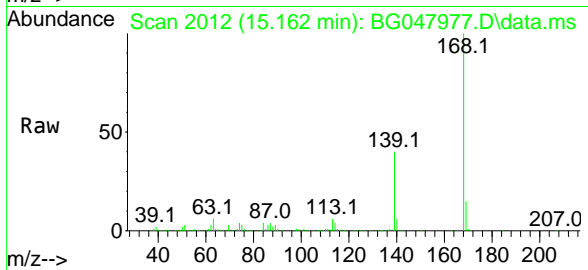
Tgt Ion:184 Resp: 126251
 Ion Ratio Lower Upper
 184 100
 63 64.0 32.3 48.5#
 154 61.9 40.4 60.6#



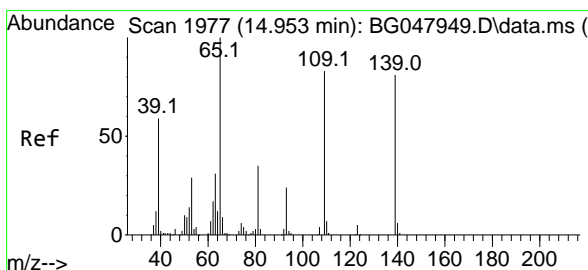
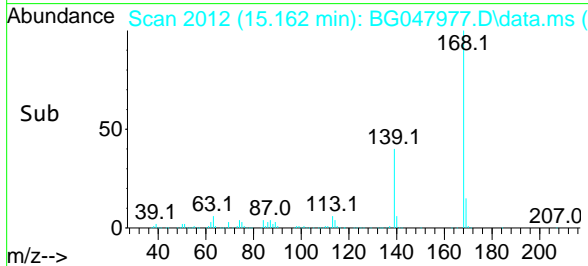
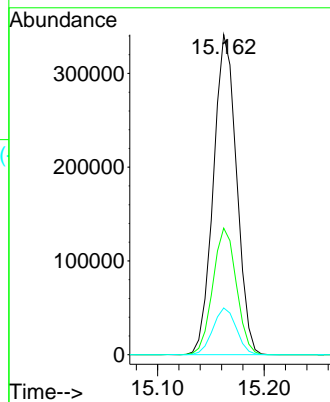


#55
 Dibenzofuran
 Concen: 37.99 ng
 RT: 15.162 min Scan# 2012
 Delta R.T. -0.003 min
 Lab File: BG047977.D
 Acq: 22 Jan 2021 14:10

Instrument :
 BNA_G
 ClientSampled :
 PB134267BS

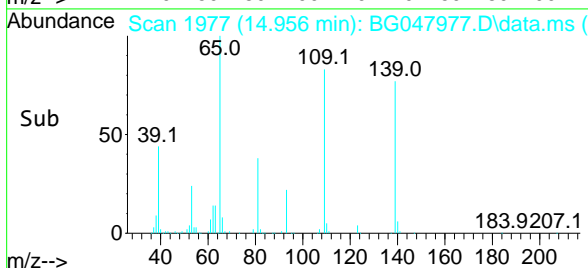
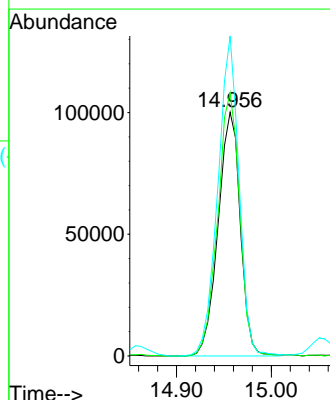
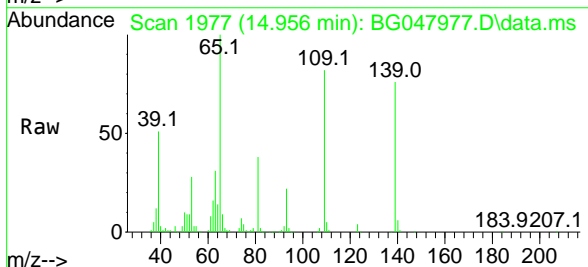


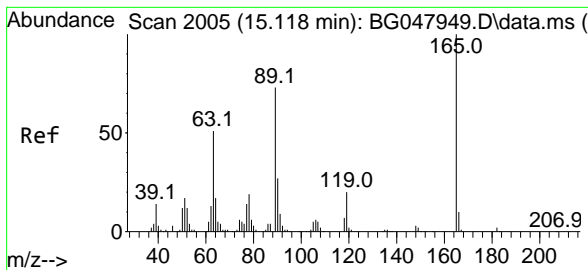
Tgt Ion:168 Resp: 515642
 Ion Ratio Lower Upper
 168 100
 139 39.6 28.6 43.0
 169 14.6 11.0 16.6



#56
 4-Nitrophenol
 Concen: 80.25 ng
 RT: 14.956 min Scan# 1977
 Delta R.T. 0.003 min
 Lab File: BG047977.D
 Acq: 22 Jan 2021 14:10

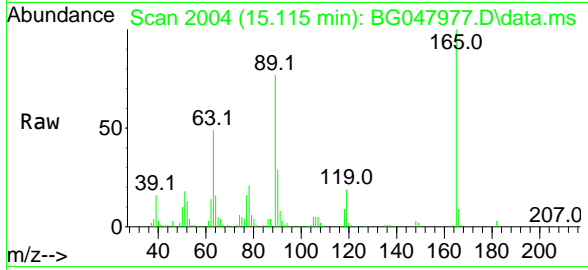
Tgt Ion:139 Resp: 162560
 Ion Ratio Lower Upper
 139 100
 109 108.0 45.9 85.9#
 65 131.4 65.4 105.4#





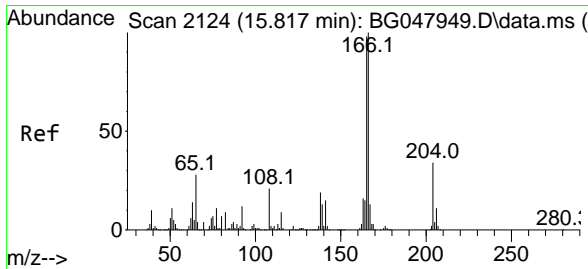
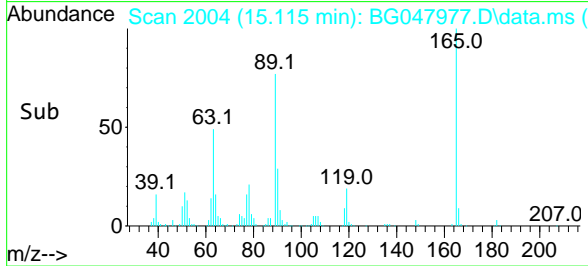
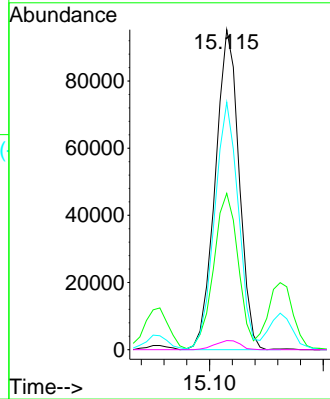
#57
 2,4-Dinitrotoluene
 Concen: 41.49 ng
 RT: 15.115 min Scan# 2004
 Delta R.T. -0.003 min
 Lab File: BG047977.D
 Acq: 22 Jan 2021 14:10

Instrument :
 BNA_G
 ClientSampled :
 PB134267BS



Tgt Ion:165 Resp: 138409

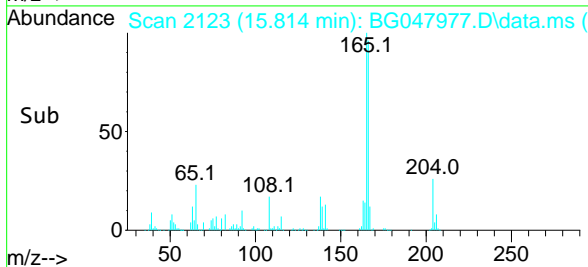
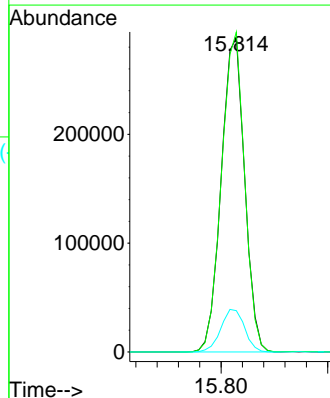
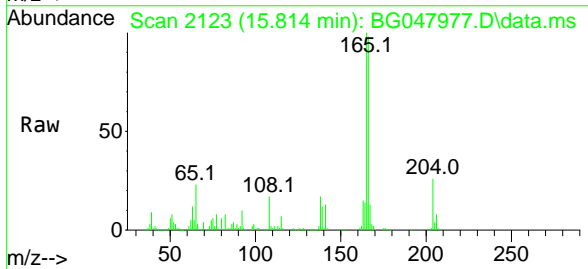
Ion	Ratio	Lower	Upper
165	100		
63	48.8	26.4	39.6#
89	77.3	47.8	71.8#
182	2.9	2.6	4.0

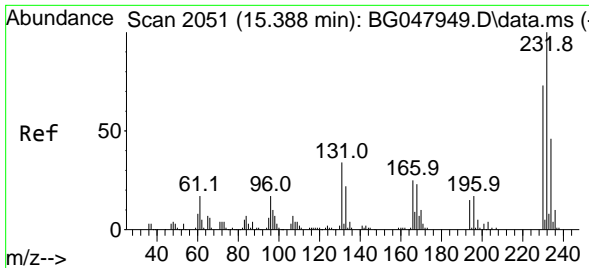


#58
 Fluorene
 Concen: 38.12 ng
 RT: 15.814 min Scan# 2123
 Delta R.T. -0.003 min
 Lab File: BG047977.D
 Acq: 22 Jan 2021 14:10

Tgt Ion:166 Resp: 439344

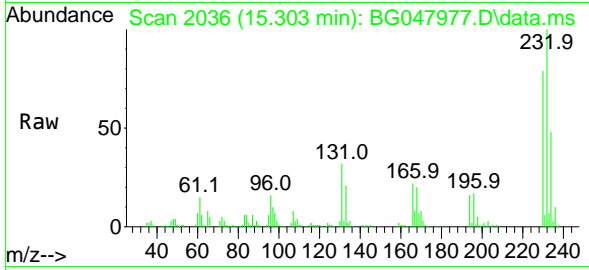
Ion	Ratio	Lower	Upper
166	100		
165	101.9	77.2	115.8
167	13.2	11.4	17.2



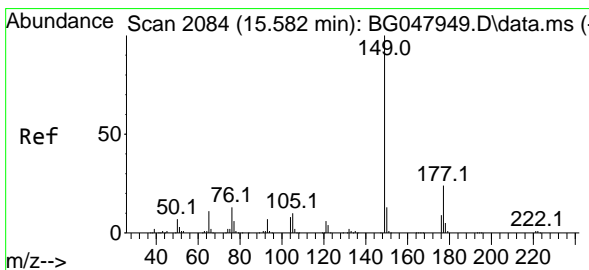
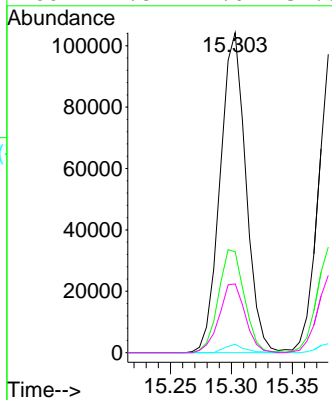
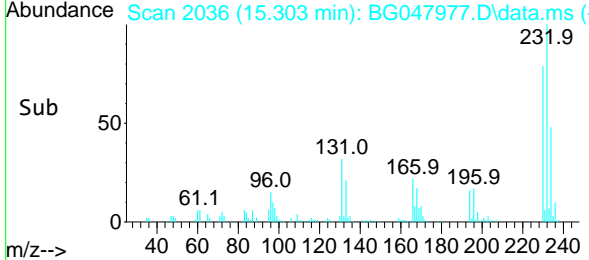


#59
 2,3,4,6-Tetrachlorophenol
 Concen: 41.53 ng
 RT: 15.303 min Scan# 2036
 Delta R.T. -0.085 min
 Lab File: BG047977.D
 Acq: 22 Jan 2021 14:10

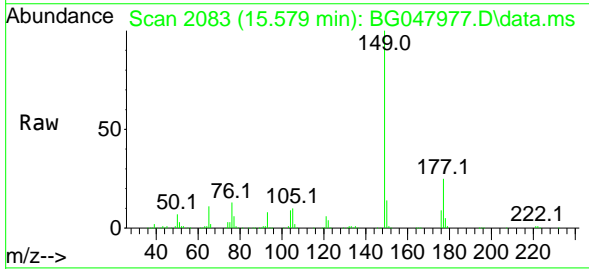
Instrument :
 BNA_G
ClientSampled :
 PB134267BS



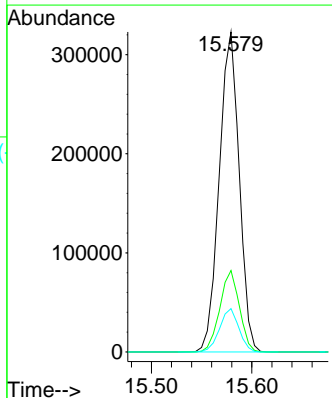
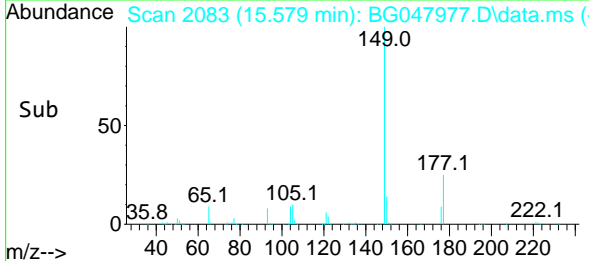
Tgt Ion:232 Resp: 152981
 Ion Ratio Lower Upper
 232 100
 131 32.5 26.6 40.0
 130 2.0 1.4 2.0
 166 21.8 21.0 31.6

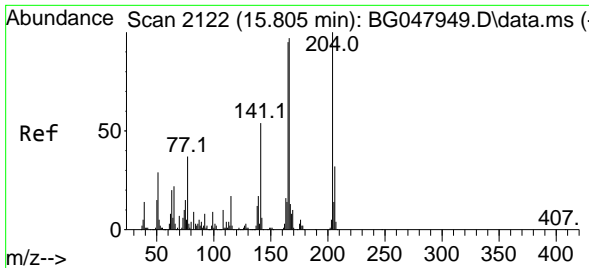


#60
 Diethylphthalate
 Concen: 36.75 ng
 RT: 15.579 min Scan# 2083
 Delta R.T. -0.003 min
 Lab File: BG047977.D
 Acq: 22 Jan 2021 14:10



Tgt Ion:149 Resp: 445216
 Ion Ratio Lower Upper
 149 100
 177 25.4 21.4 32.2
 150 13.6 10.7 16.1



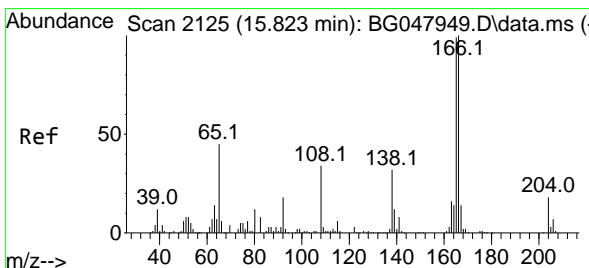
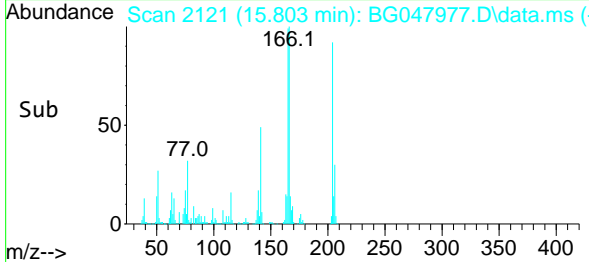
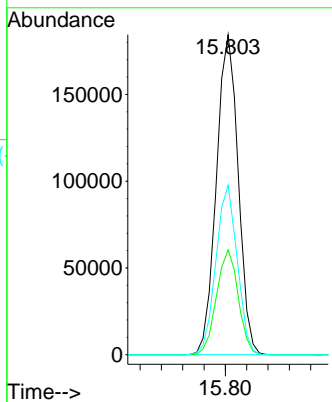
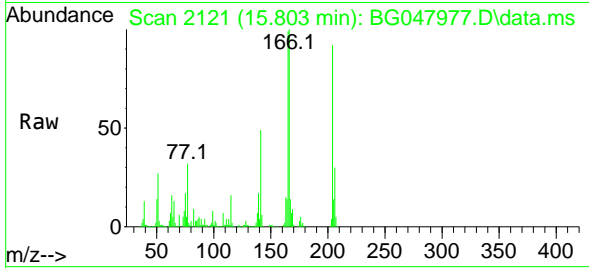


#61
 4-Chlorophenyl-phenylether
 Concen: 37.92 ng
 RT: 15.803 min Scan# 2121
 Delta R.T. -0.003 min
 Lab File: BG047977.D
 Acq: 22 Jan 2021 14:10

Instrument :
 BNA_G
 ClientSampled :
 PB134267BS

Tgt Ion:204 Resp: 261217

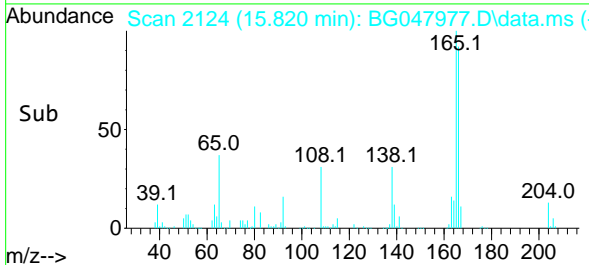
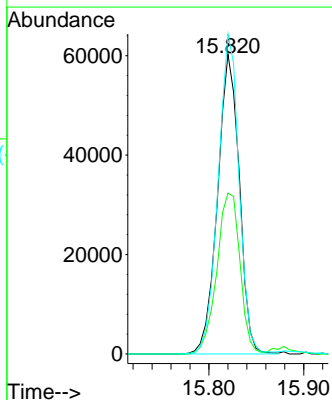
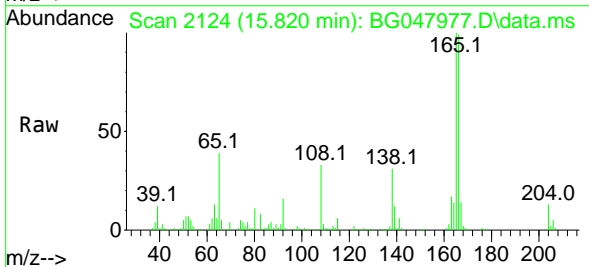
Ion	Ratio	Lower	Upper
204	100		
206	32.7	27.8	41.8
141	52.9	41.5	62.3

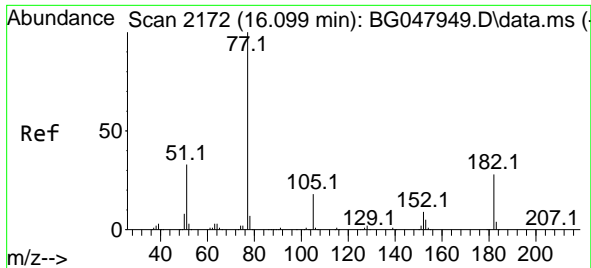


#62
 4-Nitroaniline
 Concen: 33.66 ng
 RT: 15.820 min Scan# 2124
 Delta R.T. -0.003 min
 Lab File: BG047977.D
 Acq: 22 Jan 2021 14:10

Tgt Ion:138 Resp: 96131

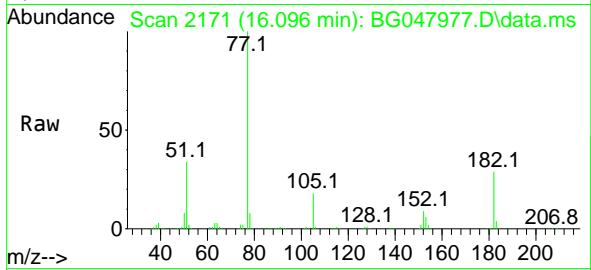
Ion	Ratio	Lower	Upper
138	100		
92	53.7	26.9	66.9
108	106.8	49.4	89.4#





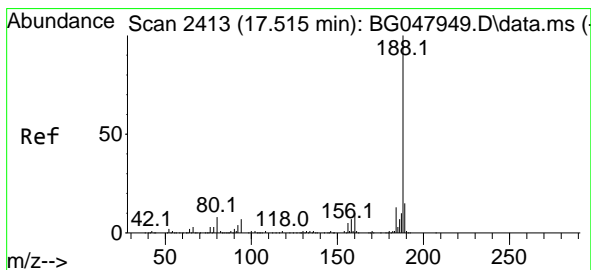
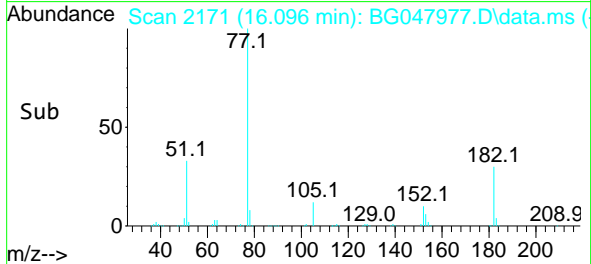
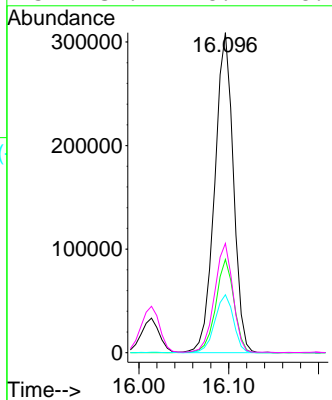
#63
 Azobenzene
 Concen: 37.53 ng
 RT: 16.096 min Scan# 2171
 Delta R.T. -0.003 min
 Lab File: BG047977.D
 Acq: 22 Jan 2021 14:10

Instrument :
 BNA_G
ClientSampled :
 PB134267BS



Tgt Ion: 77 Resp: 445595

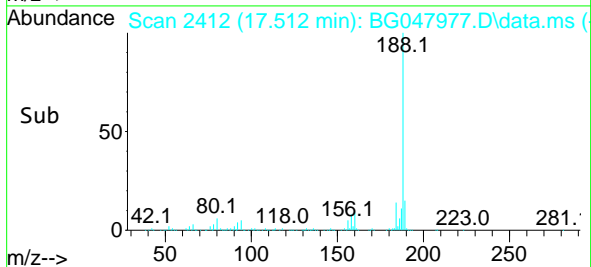
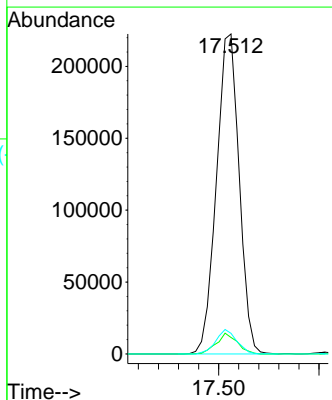
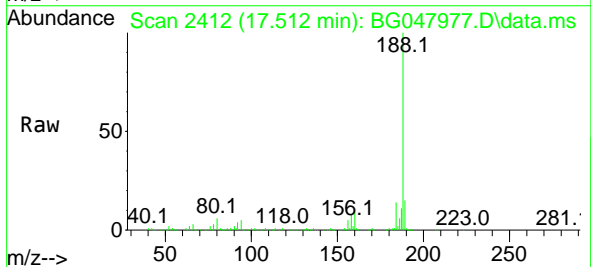
Ion	Ratio	Lower	Upper
77	100		
182	29.1	14.0	54.0
105	18.1	3.0	43.0
51	34.1	8.1	48.1

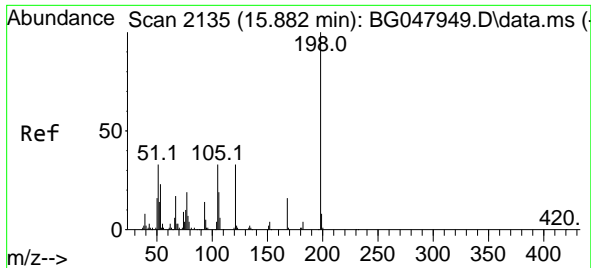


#64
 Phenanthrene-d10
 Concen: 20.00 ng
 RT: 17.512 min Scan# 2412
 Delta R.T. -0.003 min
 Lab File: BG047977.D
 Acq: 22 Jan 2021 14:10

Tgt Ion: 188 Resp: 349084

Ion	Ratio	Lower	Upper
188	100		
94	5.2	6.3	9.5#
80	6.4	7.0	10.6#

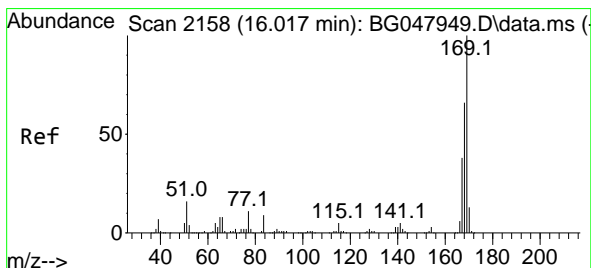
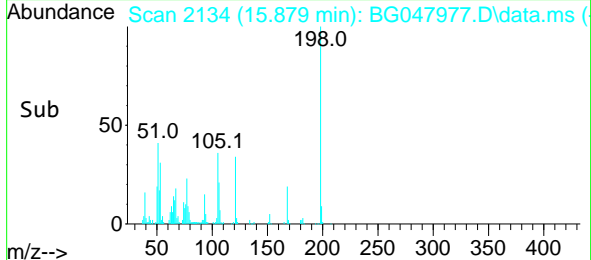
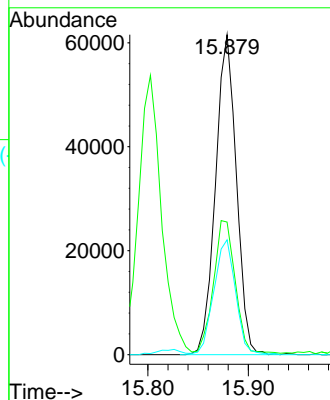
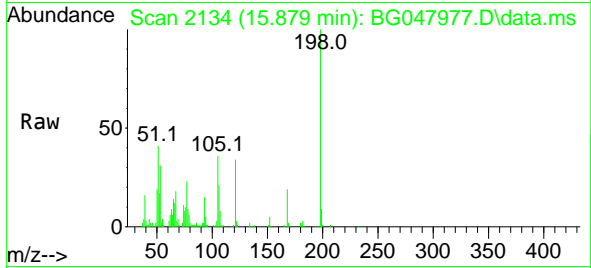




#65
 4,6-Dinitro-2-methylphenol
 Concen: 50.59 ng
 RT: 15.879 min Scan# 2134
 Delta R.T. -0.003 min
 Lab File: BG047977.D
 Acq: 22 Jan 2021 14:10

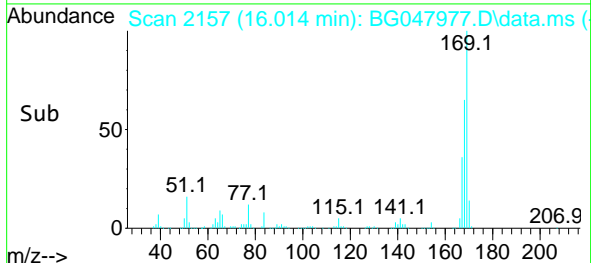
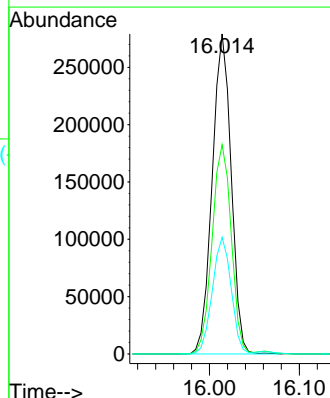
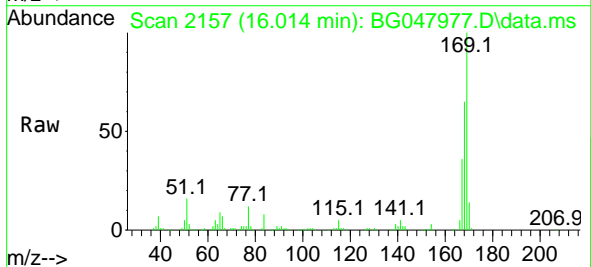
Instrument :
 BNA_G
 ClientSampleId :
 PB134267BS

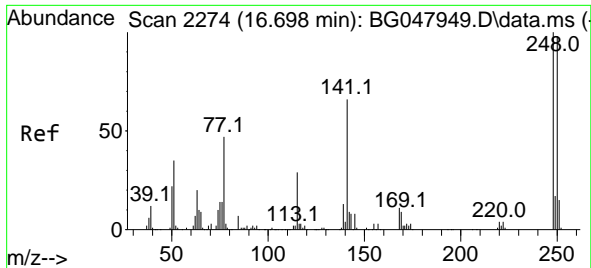
Tgt Ion:198 Resp: 88953
 Ion Ratio Lower Upper
 198 100
 51 41.5 10.4 50.4
 105 35.9 12.9 52.9



#66
 n-Nitrosodiphenylamine
 Concen: 40.15 ng
 RT: 16.014 min Scan# 2157
 Delta R.T. -0.003 min
 Lab File: BG047977.D
 Acq: 22 Jan 2021 14:10

Tgt Ion:169 Resp: 409060
 Ion Ratio Lower Upper
 169 100
 168 65.4 55.5 83.3
 167 36.4 30.5 45.7

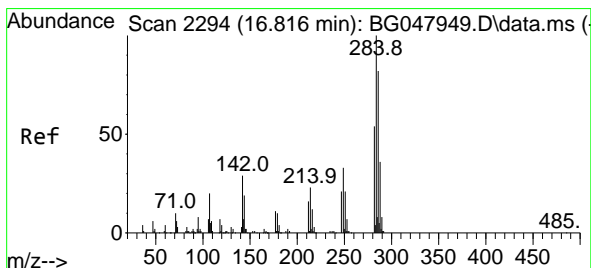
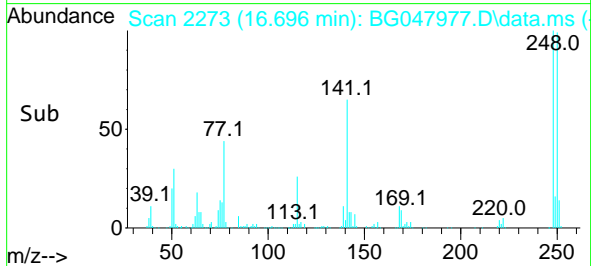
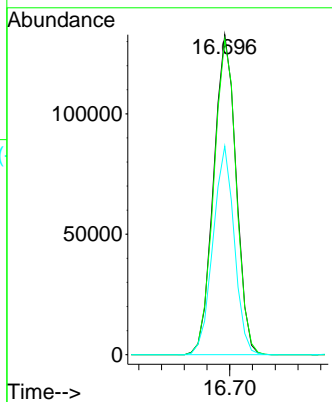
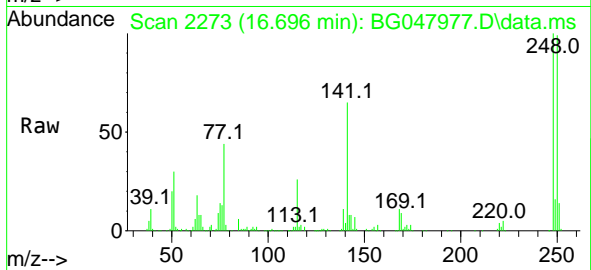




#67
 4-Bromophenyl-phenylether
 Concen: 39.32 ng
 RT: 16.696 min Scan# 2273
 Delta R.T. -0.003 min
 Lab File: BG047977.D
 Acq: 22 Jan 2021 14:10

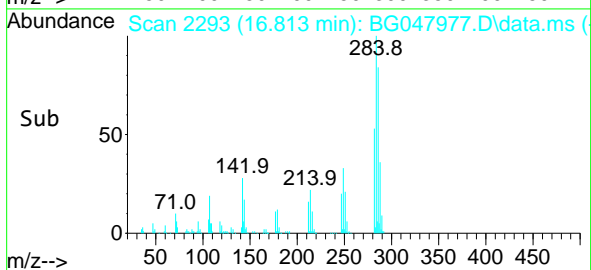
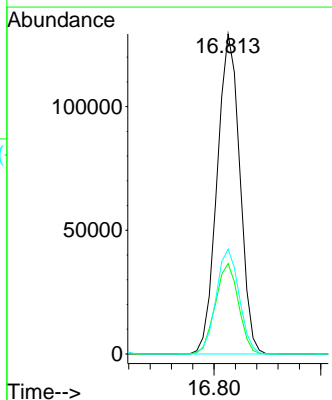
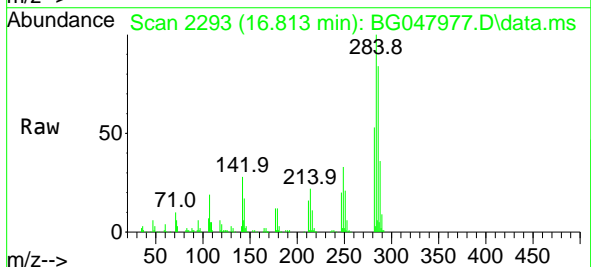
Instrument :
 BNA_G
 ClientSampled :
 PB134267BS

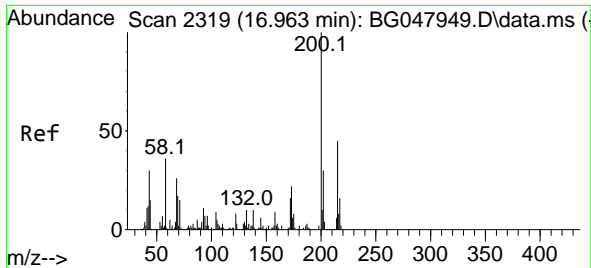
Tgt Ion	Resp	Lower	Upper
248	182039		
250	98.7	78.9	118.3
141	65.1	46.2	69.4



#68
 Hexachlorobenzene
 Concen: 38.89 ng
 RT: 16.813 min Scan# 2293
 Delta R.T. -0.003 min
 Lab File: BG047977.D
 Acq: 22 Jan 2021 14:10

Tgt Ion	Resp	Lower	Upper
284	191114		
284	100		
142	28.3	21.1	31.7
249	32.8	25.9	38.9

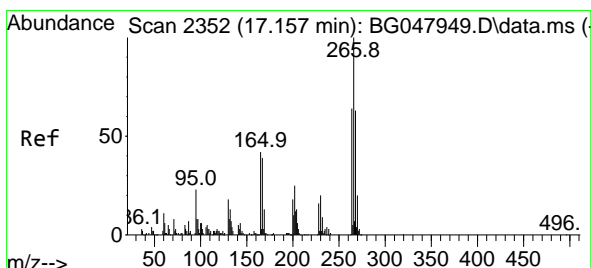
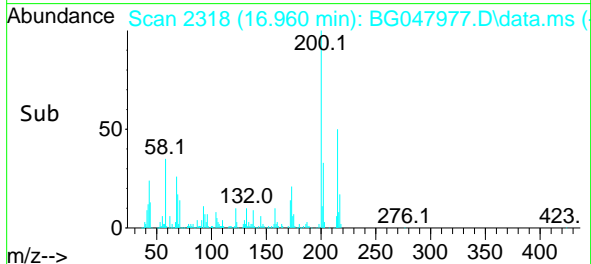
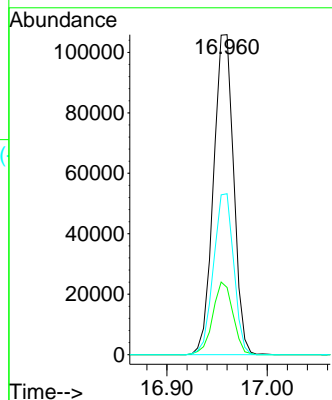
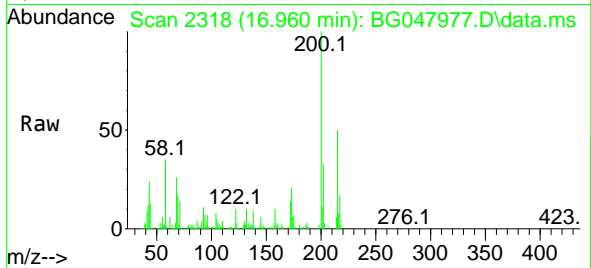




#69
 Atrazine
 Concen: 38.85 ng
 RT: 16.960 min Scan# 2318
 Delta R.T. -0.003 min
 Lab File: BG047977.D
 Acq: 22 Jan 2021 14:10

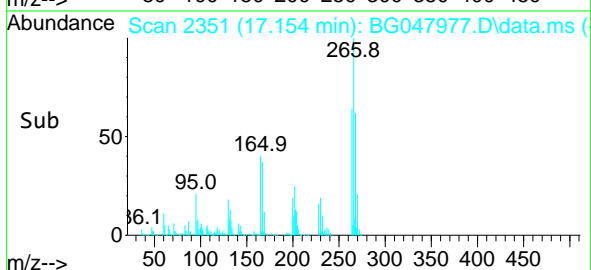
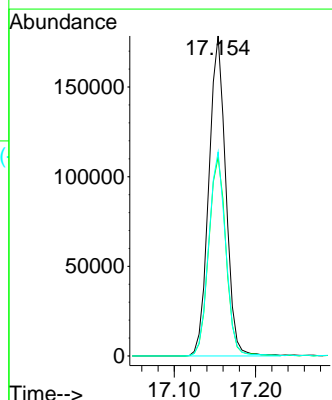
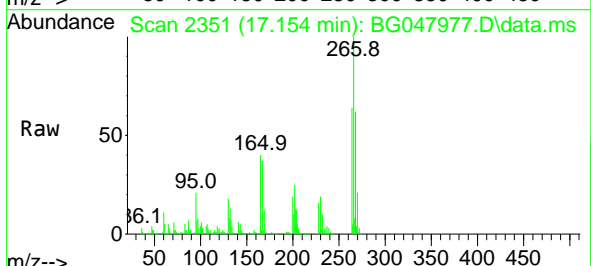
Instrument :
 BNA_G
 ClientSampleId :
 PB134267BS

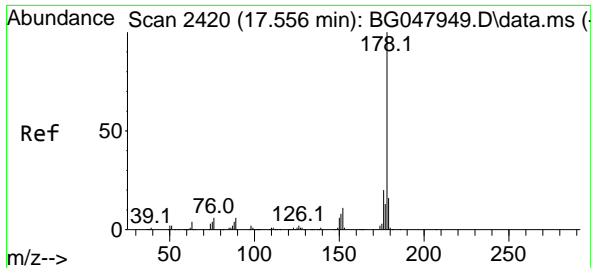
Tgt Ion:200 Resp: 147699
 Ion Ratio Lower Upper
 200 100
 173 21.0 4.2 44.2
 215 50.3 30.0 70.0



#70
 Pentachlorophenol
 Concen: 91.18 ng
 RT: 17.154 min Scan# 2351
 Delta R.T. -0.003 min
 Lab File: BG047977.D
 Acq: 22 Jan 2021 14:10

Tgt Ion:266 Resp: 258109
 Ion Ratio Lower Upper
 266 100
 268 62.1 49.8 74.6
 264 63.8 49.3 73.9



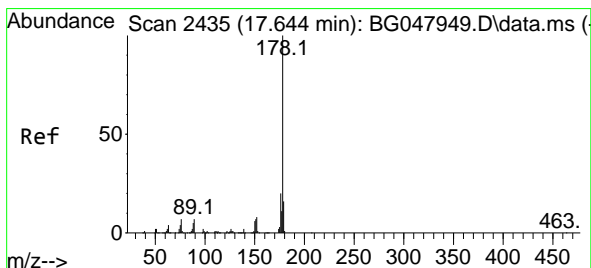
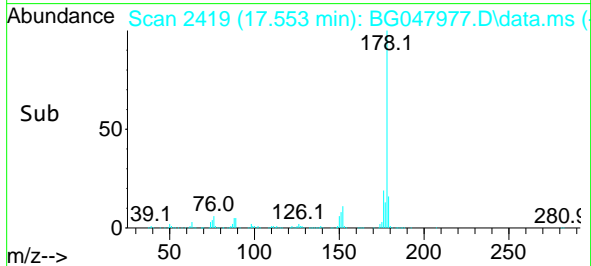
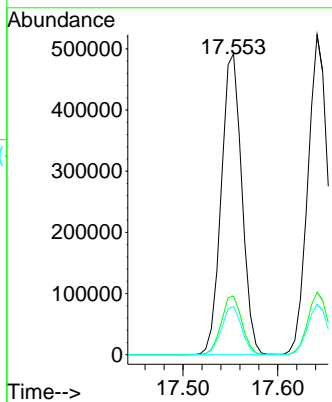
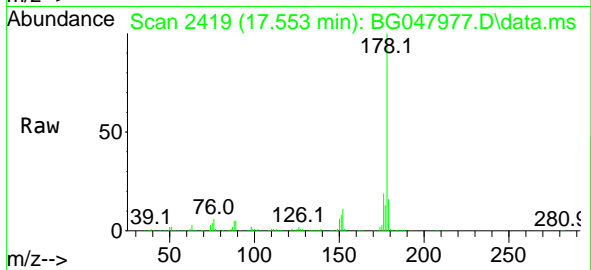


#71
 Phenanthrene
 Concen: 39.24 ng
 RT: 17.553 min Scan# 2419
 Delta R.T. -0.003 min
 Lab File: BG047977.D
 Acq: 22 Jan 2021 14:10

Instrument :
 BNA_G
 ClientSampled :
 PB134267BS

Tgt Ion:178 Resp: 740811

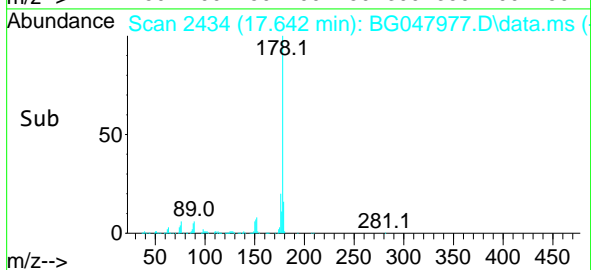
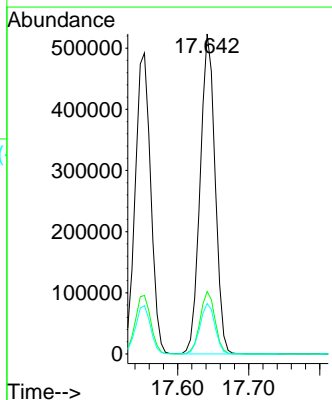
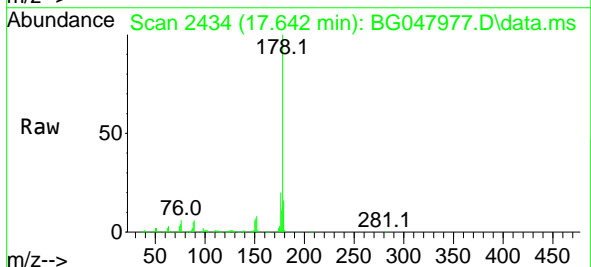
Ion	Ratio	Lower	Upper
178	100		
176	19.5	16.7	25.1
179	16.1	14.0	21.0

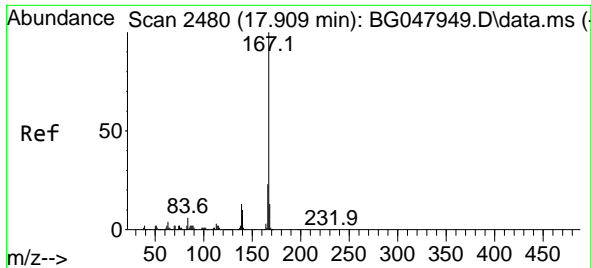


#72
 Anthracene
 Concen: 41.48 ng
 RT: 17.642 min Scan# 2434
 Delta R.T. -0.003 min
 Lab File: BG047977.D
 Acq: 22 Jan 2021 14:10

Tgt Ion:178 Resp: 766746

Ion	Ratio	Lower	Upper
178	100		
176	19.5	16.4	24.6
179	15.8	13.8	20.6

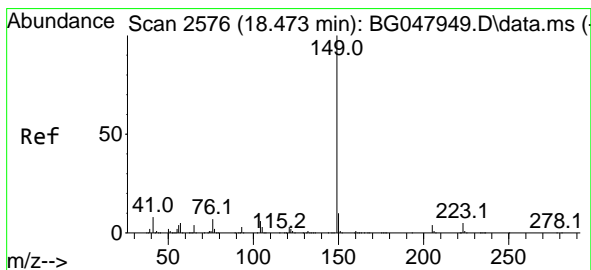
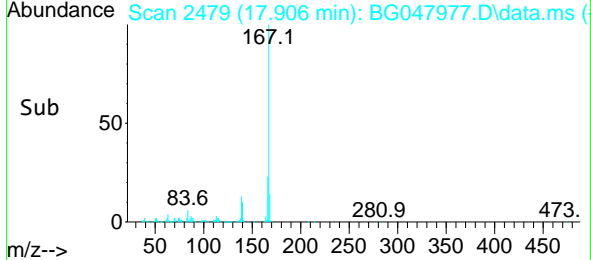
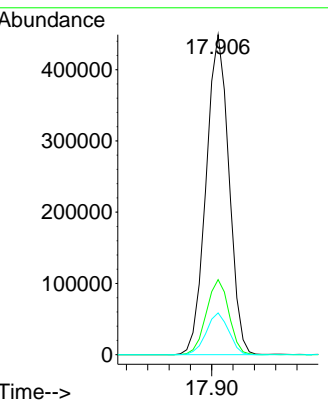
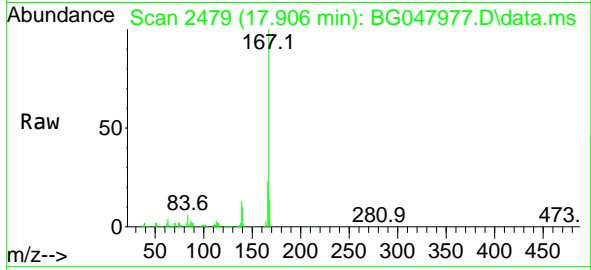




#73
 Carbazole
 Concen: 39.61 ng
 RT: 17.906 min Scan# 2479
 Delta R.T. -0.003 min
 Lab File: BG047977.D
 Acq: 22 Jan 2021 14:10

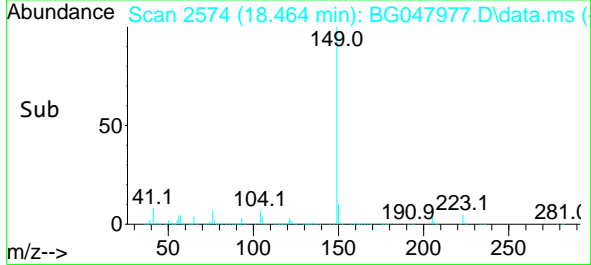
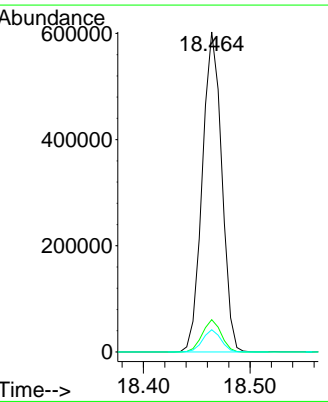
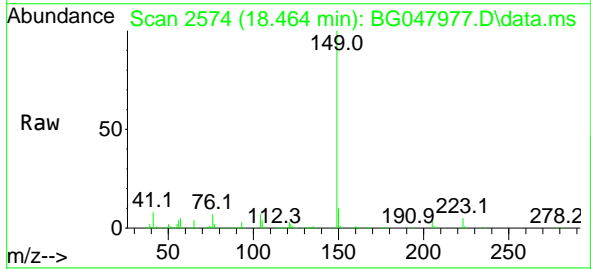
Instrument :
 BNA_G
ClientSampled :
 PB134267BS

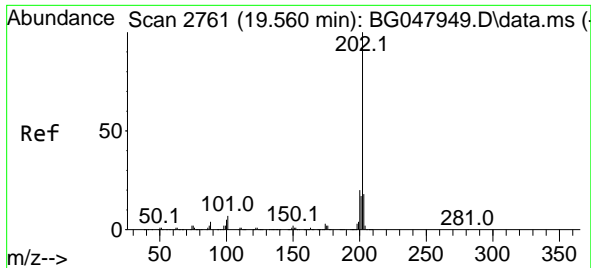
Tgt Ion	Resp	Lower	Upper
167	100		
166	23.5	18.7	28.1
139	13.0	9.6	14.4



#74
 Di-n-butylphthalate
 Concen: 38.00 ng
 RT: 18.464 min Scan# 2574
 Delta R.T. -0.009 min
 Lab File: BG047977.D
 Acq: 22 Jan 2021 14:10

Tgt Ion	Resp	Lower	Upper
149	100		
150	10.1	8.2	12.4
104	6.9	3.8	5.8

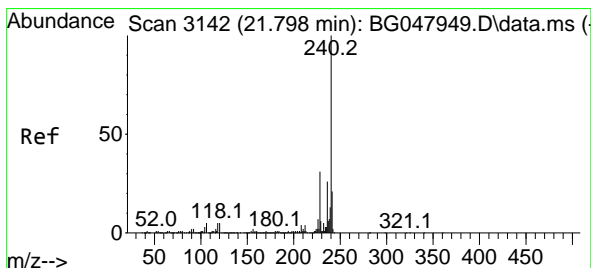
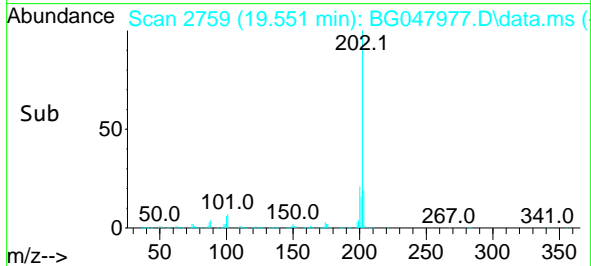
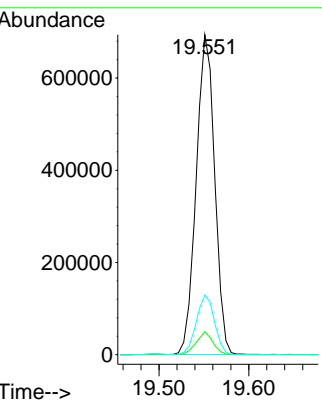
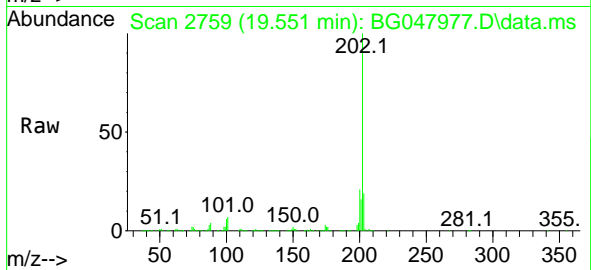




#75
 Fluoranthene
 Concen: 39.44 ng
 RT: 19.551 min Scan# 2759
 Delta R.T. -0.009 min
 Lab File: BG047977.D
 Acq: 22 Jan 2021 14:10

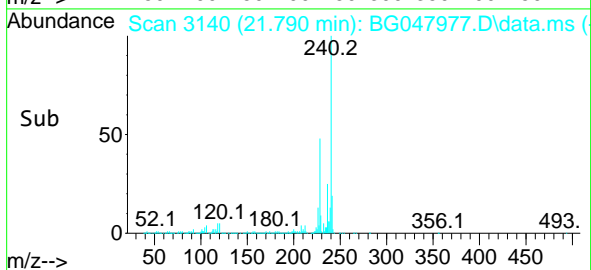
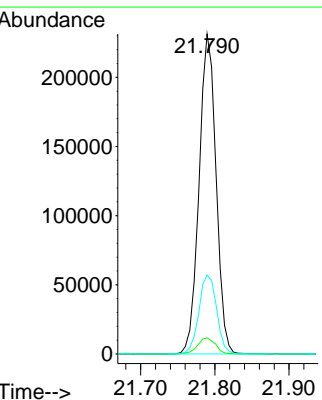
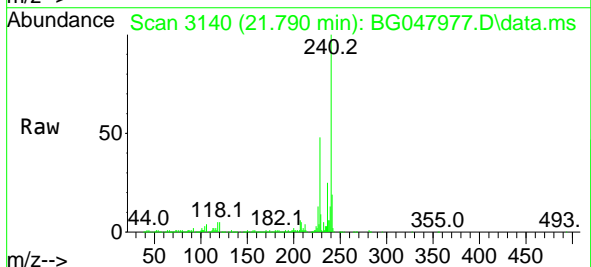
Instrument :
 BNA_G
ClientSampled :
 PB134267BS

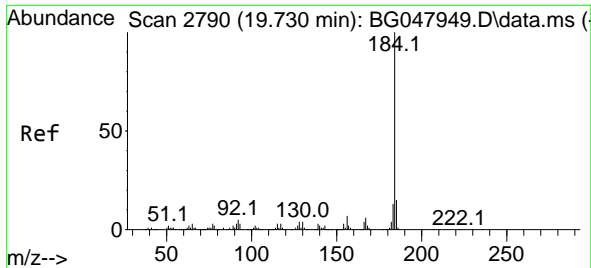
Tgt Ion	Resp	Lower	Upper
202	100		
101	7.2	0.0	29.7
203	18.6	0.0	39.2



#76
 Chrysene-d12
 Concen: 20.00 ng
 RT: 21.790 min Scan# 3140
 Delta R.T. -0.009 min
 Lab File: BG047977.D
 Acq: 22 Jan 2021 14:10

Tgt Ion	Resp	Lower	Upper
240	100		
120	5.1	6.2	9.4#
236	24.7	20.5	30.7



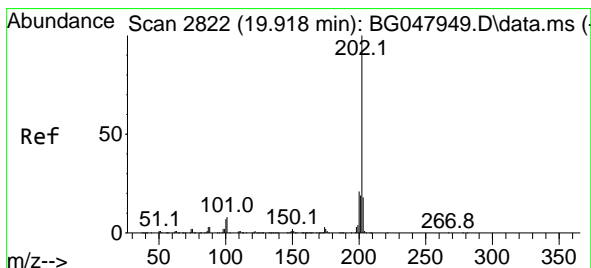
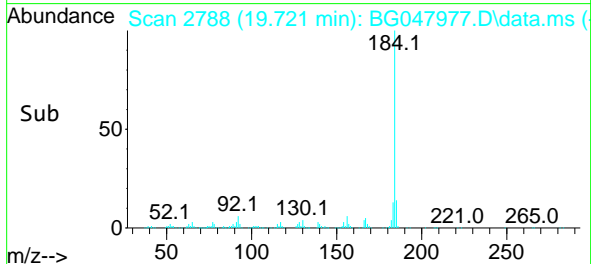
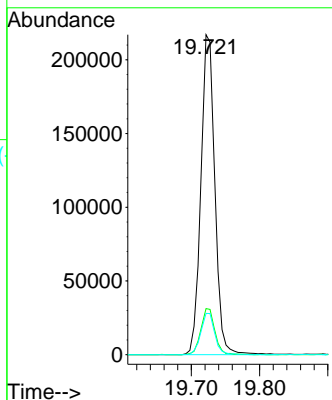
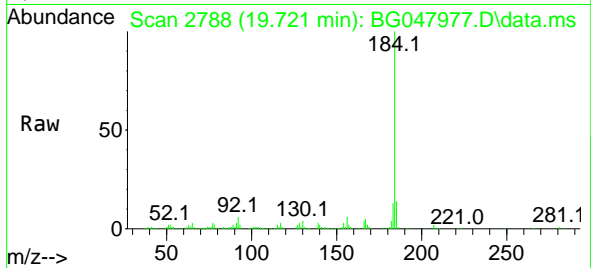


#77
 Benzidine
 Concen: 32.97 ng
 RT: 19.721 min Scan# 2788
 Delta R.T. -0.009 min
 Lab File: BG047977.D
 Acq: 22 Jan 2021 14:10

Instrument :
 BNA_G
 ClientSampled :
 PB134267BS

Tgt Ion:184 Resp: 310325

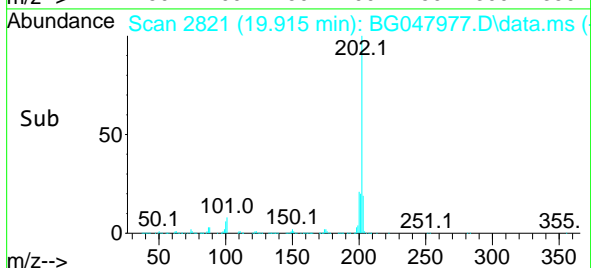
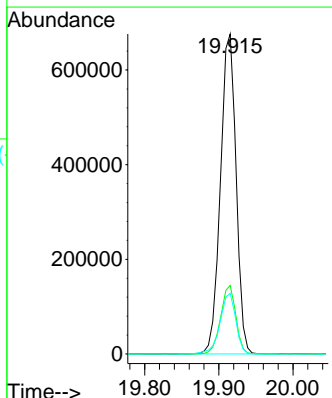
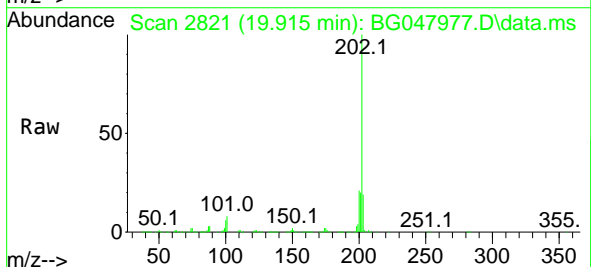
Ion	Ratio	Lower	Upper
184	100		
185	14.4	12.4	18.6
183	12.9	10.6	15.8

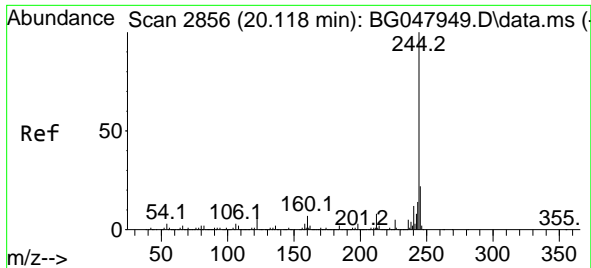


#78
 Pyrene
 Concen: 39.82 ng
 RT: 19.915 min Scan# 2821
 Delta R.T. -0.003 min
 Lab File: BG047977.D
 Acq: 22 Jan 2021 14:10

Tgt Ion:202 Resp: 991141

Ion	Ratio	Lower	Upper
202	100		
200	21.4	18.6	27.8
203	18.9	15.3	22.9

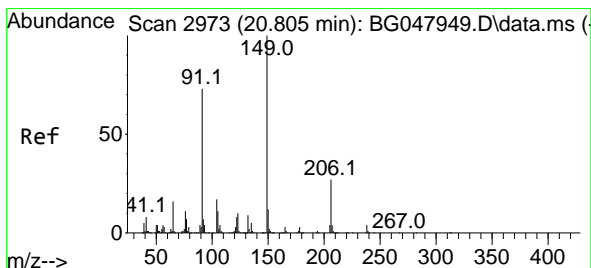
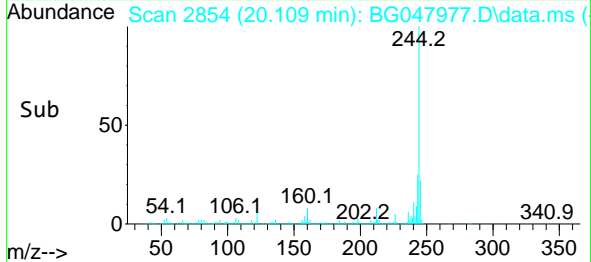
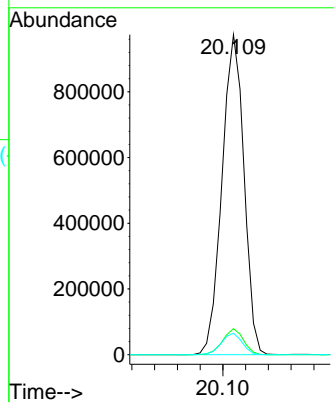
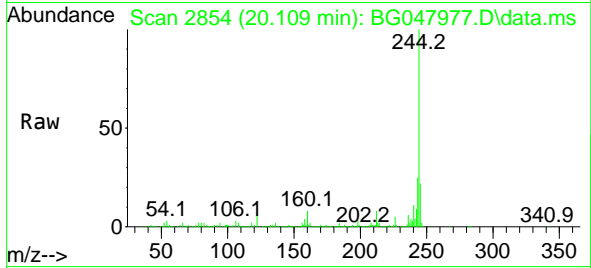




#79
 Terphenyl-d14
 Concen: 65.60 ng
 RT: 20.109 min Scan# 2854
 Delta R.T. -0.009 min
 Lab File: BG047977.D
 Acq: 22 Jan 2021 14:10

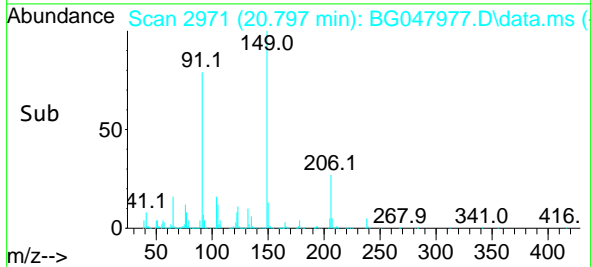
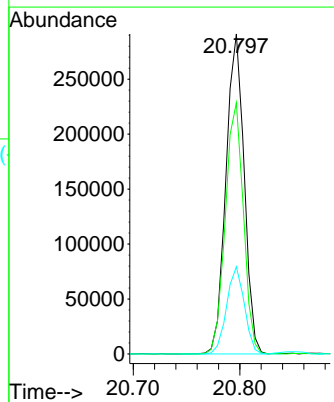
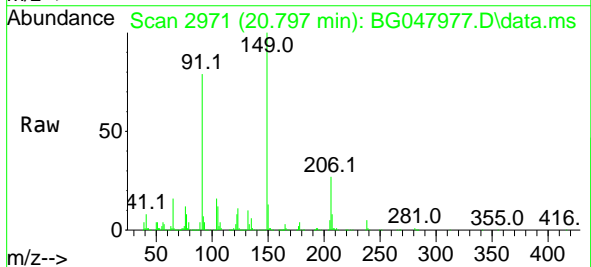
Instrument :
 BNA_G
 ClientSampled :
 PB134267BS

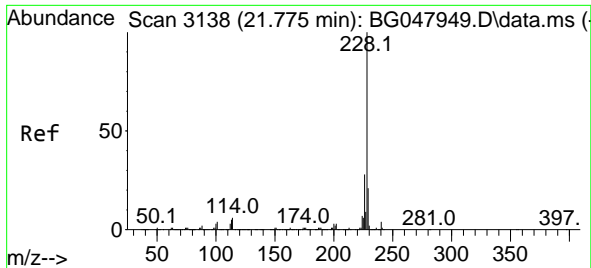
Tgt Ion:244 Resp: 1305051
 Ion Ratio Lower Upper
 244 100
 212 8.1 6.7 10.1
 122 6.7 7.8 11.6#



#80
 Butylbenzylphthalate
 Concen: 39.14 ng
 RT: 20.797 min Scan# 2971
 Delta R.T. -0.009 min
 Lab File: BG047977.D
 Acq: 22 Jan 2021 14:10

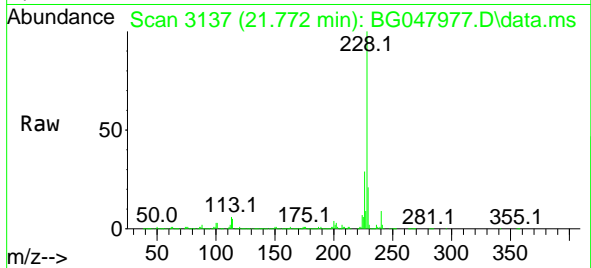
Tgt Ion:149 Resp: 345079
 Ion Ratio Lower Upper
 149 100
 91 78.5 51.5 77.3#
 206 27.3 21.2 31.8



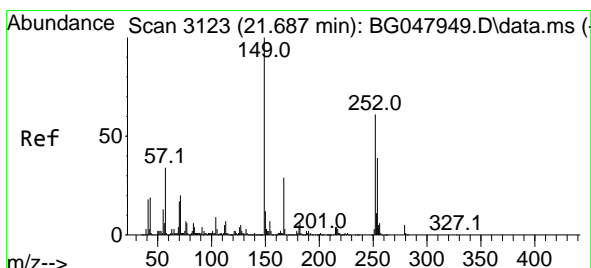
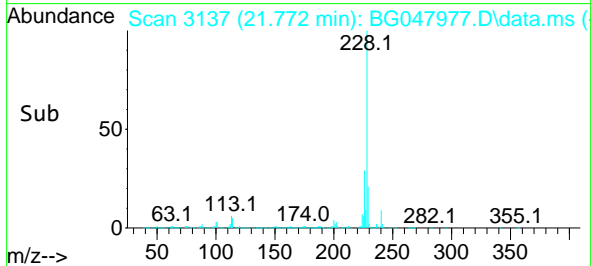
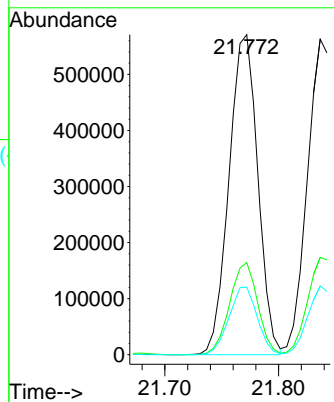


#81
 Benzo(a)anthracene
 Concen: 39.58 ng
 RT: 21.772 min Scan# 3137
 Delta R.T. -0.003 min
 Lab File: BG047977.D
 Acq: 22 Jan 2021 14:10

Instrument :
 BNA_G
 ClientSampled :
 PB134267BS

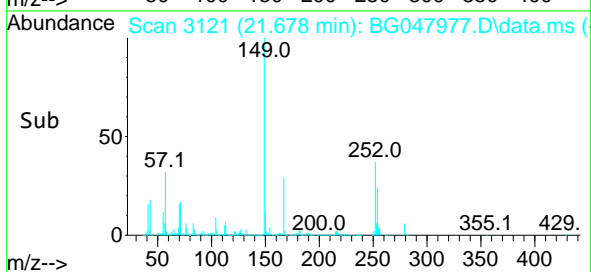
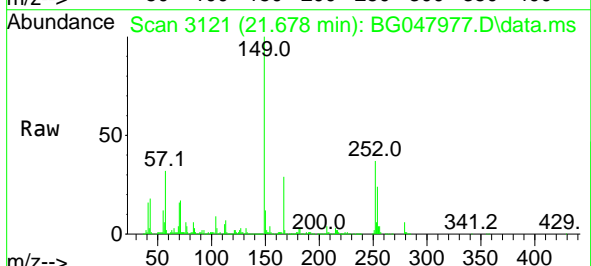
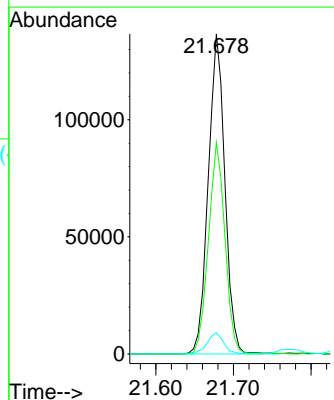


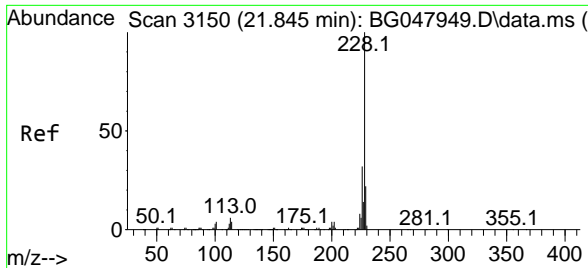
Tgt Ion:228 Resp: 1005441
 Ion Ratio Lower Upper
 228 100
 226 28.8 23.3 34.9
 229 21.2 17.4 26.0



#82
 3,3'-Dichlorobenzidine
 Concen: 23.21 ng
 RT: 21.678 min Scan# 3121
 Delta R.T. -0.009 min
 Lab File: BG047977.D
 Acq: 22 Jan 2021 14:10

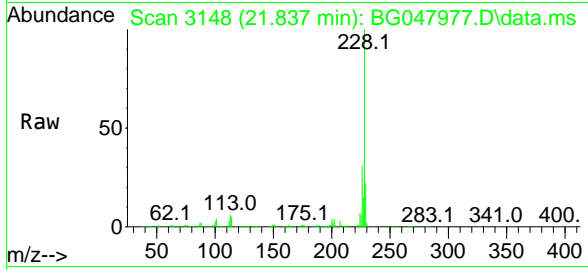
Tgt Ion:252 Resp: 204010
 Ion Ratio Lower Upper
 252 100
 254 66.0 53.2 79.8
 126 6.7 6.8 10.2#





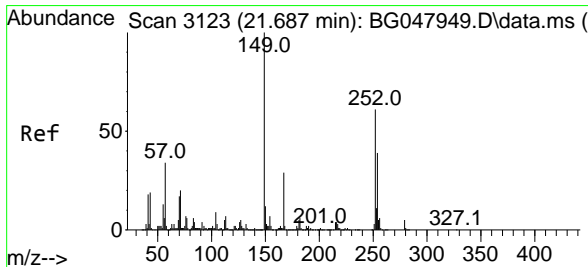
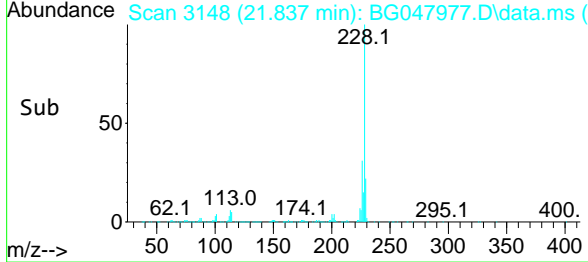
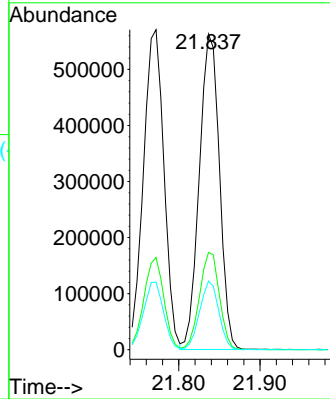
#83
 Chrysene
 Concen: 39.79 ng
 RT: 21.837 min Scan# 3148
 Delta R.T. -0.009 min
 Lab File: BG047977.D
 Acq: 22 Jan 2021 14:10

Instrument :
 BNA_G
ClientSampled :
 PB134267BS



Tgt Ion: 228 Resp: 968045

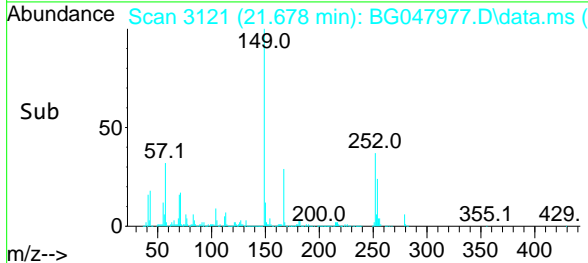
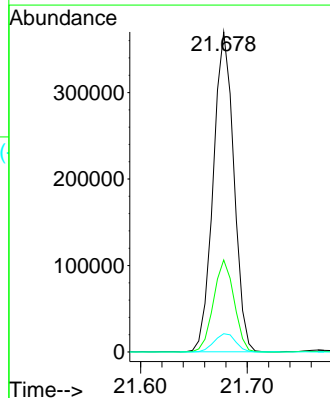
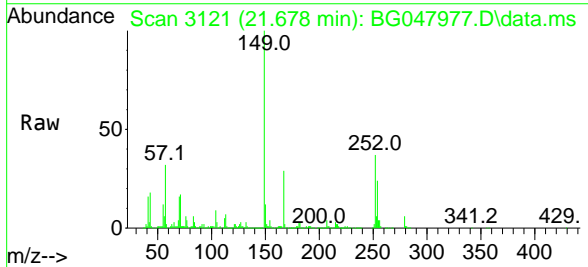
Ion	Ratio	Lower	Upper
228	100		
226	30.8	25.0	37.4
229	21.7	17.3	25.9

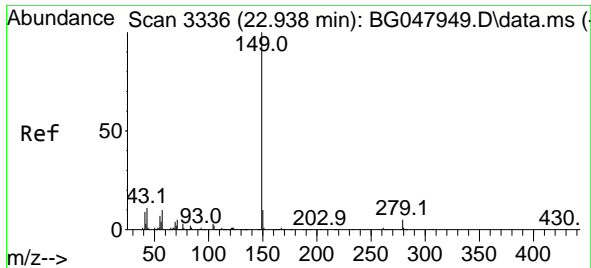


#84
 Bis(2-ethylhexyl)phthalate
 Concen: 39.56 ng
 RT: 21.678 min Scan# 3121
 Delta R.T. -0.009 min
 Lab File: BG047977.D
 Acq: 22 Jan 2021 14:10

Tgt Ion: 149 Resp: 495694

Ion	Ratio	Lower	Upper
149	100		
167	28.7	24.8	37.2
279	5.7	4.6	7.0

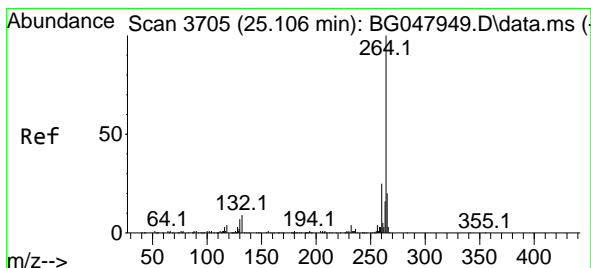
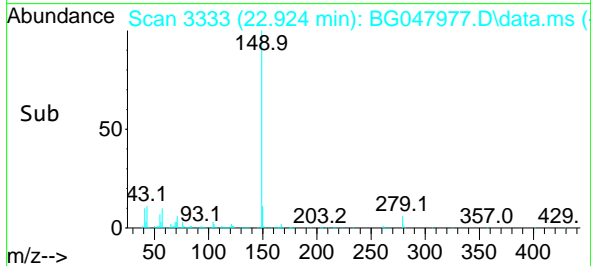
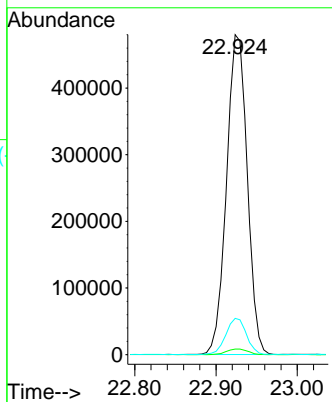
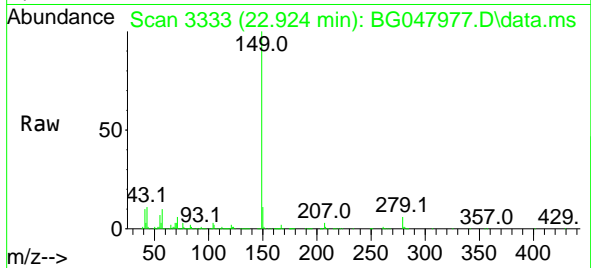




#85
 Di-n-octyl phthalate
 Concen: 40.44 ng
 RT: 22.924 min Scan# 3333
 Delta R.T. -0.015 min
 Lab File: BG047977.D
 Acq: 22 Jan 2021 14:10

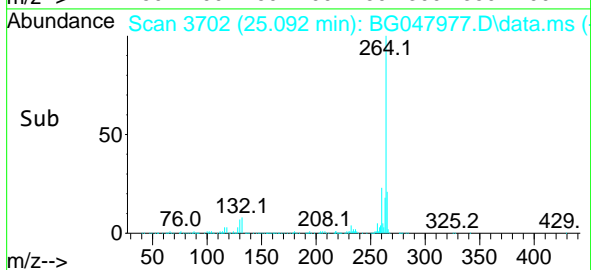
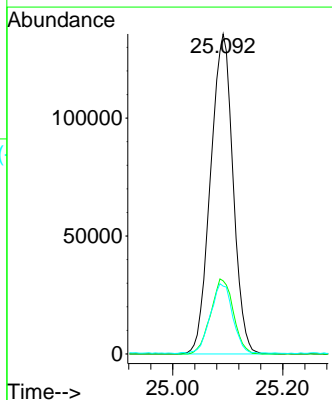
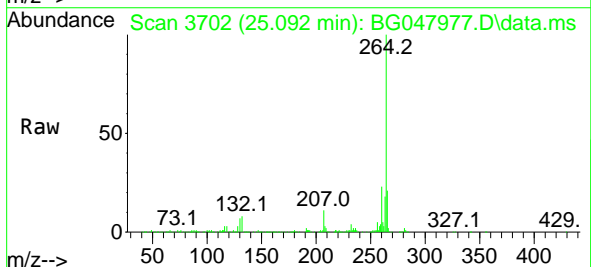
Instrument :
 BNA_G
ClientSampled :
 PB134267BS

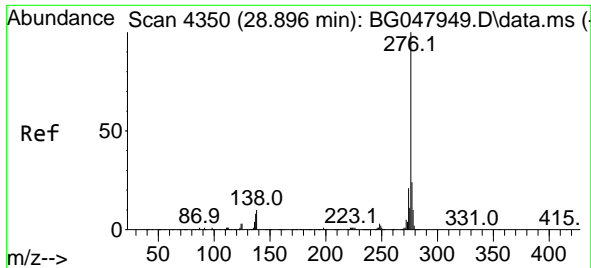
Tgt Ion	Resp	Lower	Upper
149	100		
167	1.8	1.4	2.2
43	11.2	6.8	10.2#



#86
 Perylene-d12
 Concen: 20.00 ng
 RT: 25.092 min Scan# 3702
 Delta R.T. -0.014 min
 Lab File: BG047977.D
 Acq: 22 Jan 2021 14:10

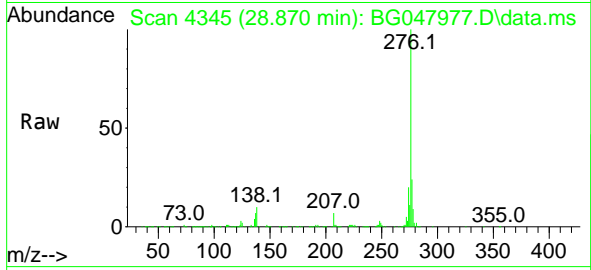
Tgt Ion	Resp	Lower	Upper
264	100		
260	22.9	18.8	28.2
265	21.2	17.8	26.8



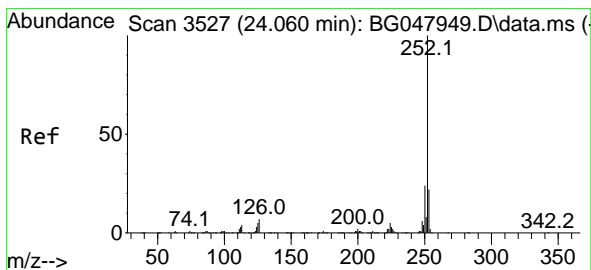
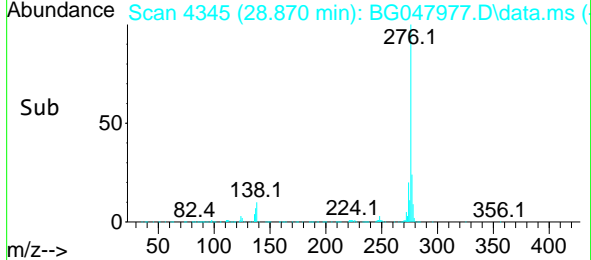
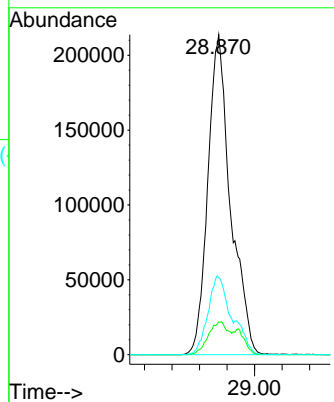


#87
 Indeno(1,2,3-cd)pyrene
 Concen: 41.53 ng
 RT: 28.870 min Scan# 4345
 Delta R.T. -0.026 min
 Lab File: BG047977.D
 Acq: 22 Jan 2021 14:10

Instrument :
 BNA_G
ClientSampled :
 PB134267BS

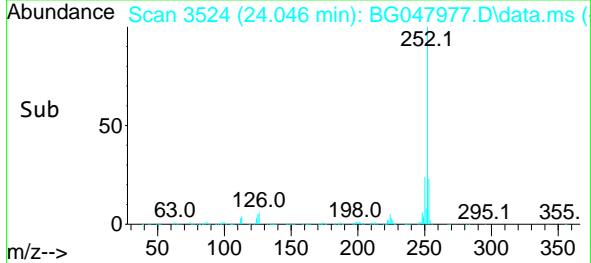
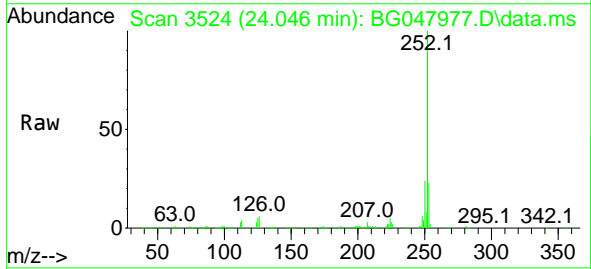
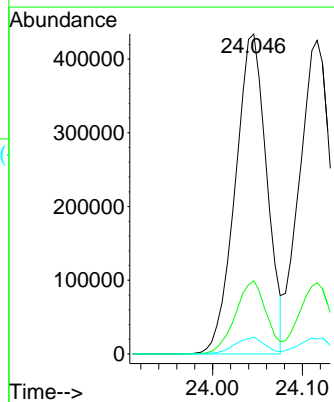


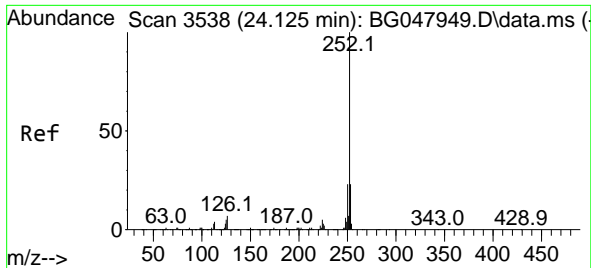
Tgt Ion:276 Resp: 1221948
 Ion Ratio Lower Upper
 276 100
 138 9.2 16.2 24.2#
 277 26.1 20.3 30.5



#88
 Benzo(b)fluoranthene
 Concen: 41.31 ng
 RT: 24.046 min Scan# 3524
 Delta R.T. -0.015 min
 Lab File: BG047977.D
 Acq: 22 Jan 2021 14:10

Tgt Ion:252 Resp: 1056746
 Ion Ratio Lower Upper
 252 100
 253 22.8 18.7 28.1
 125 5.3 6.5 9.7#

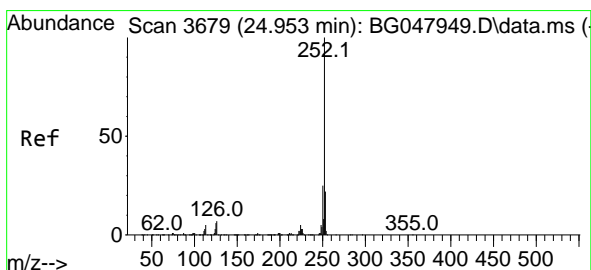
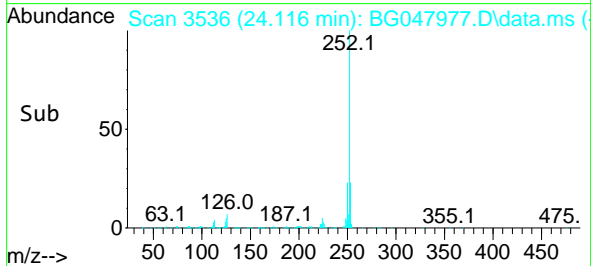
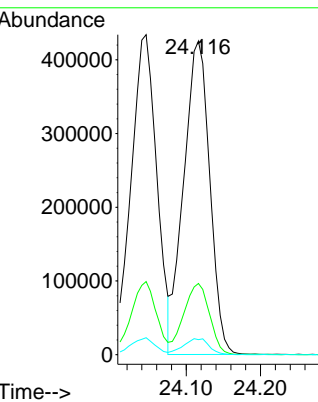
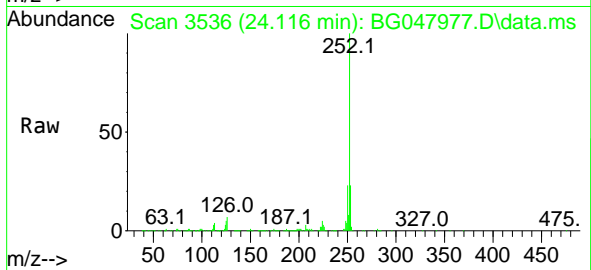




#89
 Benzo(k)fluoranthene
 Concen: 41.78 ng
 RT: 24.116 min Scan# 3536
 Delta R.T. -0.009 min
 Lab File: BG047977.D
 Acq: 22 Jan 2021 14:10

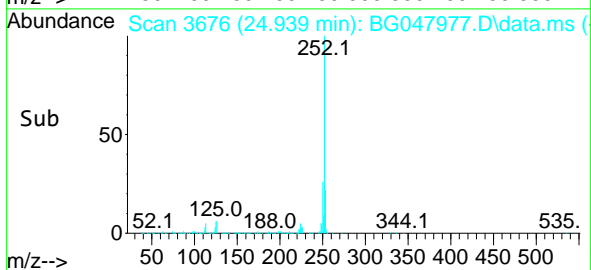
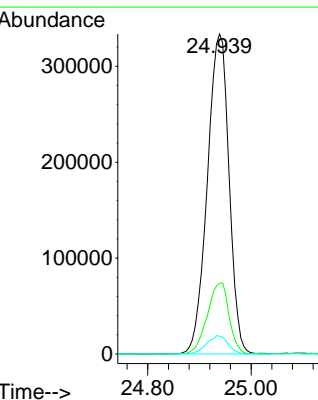
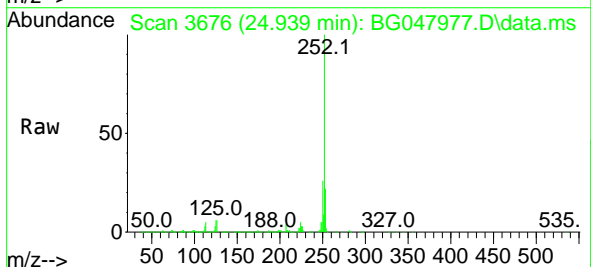
Instrument :
 BNA_G
 ClientSampled :
 PB134267BS

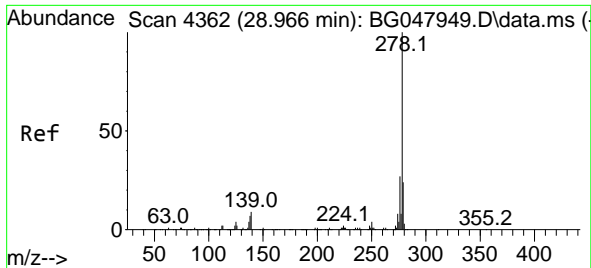
Tgt Ion:252 Resp: 1037850
 Ion Ratio Lower Upper
 252 100
 253 22.7 18.6 27.8
 125 4.8 6.8 10.2#



#90
 Benzo(a)pyrene
 Concen: 40.32 ng
 RT: 24.939 min Scan# 3676
 Delta R.T. -0.015 min
 Lab File: BG047977.D
 Acq: 22 Jan 2021 14:10

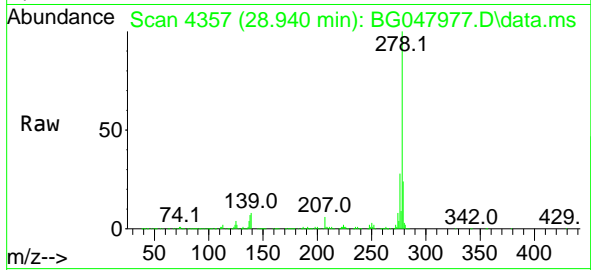
Tgt Ion:252 Resp: 971563
 Ion Ratio Lower Upper
 252 100
 253 22.1 17.9 26.9
 125 5.5 7.0 10.4#



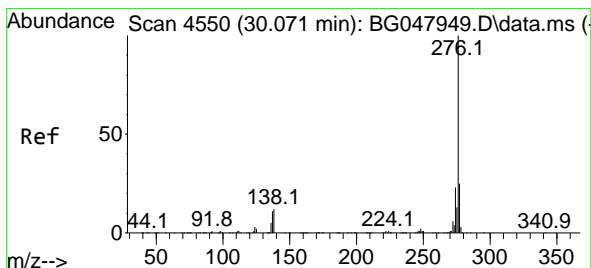
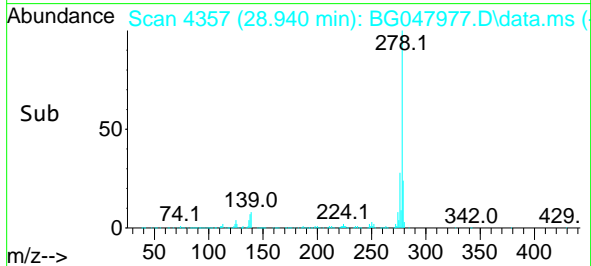
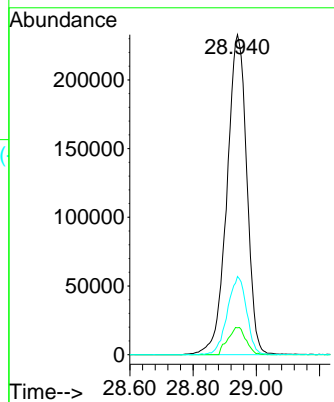


#91
 Dibenzo(a,h)anthracene
 Concen: 42.32 ng
 RT: 28.940 min Scan# 4357
 Delta R.T. -0.026 min
 Lab File: BG047977.D
 Acq: 22 Jan 2021 14:10

Instrument :
 BNA_G
ClientSampled :
 PB134267BS



Tgt Ion:278 Resp: 1015354
 Ion Ratio Lower Upper
 278 100
 139 8.4 10.5 15.7#
 279 24.4 19.4 29.0



#92
 Benzo(g,h,i)perylene
 Concen: 42.54 ng
 RT: 30.045 min Scan# 4545
 Delta R.T. -0.026 min
 Lab File: BG047977.D
 Acq: 22 Jan 2021 14:10

Tgt Ion:276 Resp: 997869
 Ion Ratio Lower Upper
 276 100
 277 22.7 19.6 29.4
 138 10.4 13.4 20.2#

