

Data Path : Z:\svoasrv\HPCHEM1\BNA_G\Data\BG012224\
 Data File : BG060380.D
 Acq On : 22 Jan 2024 11:34
 Operator : MA/JU
 Sample : PB158532BL
 Misc :
 ALS Vial : 3 Sample Multiplier: 1

Instrument :
 BNA_G
 ClientSampleId :
 PB158532BL

Integration Parameters: rteint.p
 Integrator: RTE
 Smoothing : ON Filtering: 5
 Sampling : 1 Min Area: 3 % of largest Peak
 Start Thrs: 0.2 Max Peaks: 100
 Stop Thrs : 0 Peak Location: TOP

If leading or trailing edge < 100 prefer < Baseline drop else tangent >
 Peak separation: 5

Method : Z:\svoasrv\HPCHEM1\BNA_G\Methods\8270-BG010824.M
 Title : ASP BNA STANDARDS FOR 5 POINT CALIBRATION

Signal : TIC: BG060380.D\data.ms

peak #	R.T. min	first scan	max scan	last scan	PK TY	peak height	corr. area	corr. % max.	% of total
1	5.504	404	411	426	rBV	5103826	8118518	35.17%	7.771%
2	7.102	675	683	697	rBV	4910971	8659018	37.52%	8.289%
3	7.931	817	824	837	rBV	894672	1563151	6.77%	1.496%
4	9.094	1012	1022	1040	rBV	3347053	6109126	26.47%	5.848%
5	10.733	1293	1301	1312	rBV	1359258	2431411	10.53%	2.327%
6	13.189	1711	1719	1731	rBV	9310299	15331779	66.43%	14.676%
7	14.564	1944	1953	1962	rBV	2516075	3953692	17.13%	3.785%
8	16.057	2200	2207	2226	rBV	7794147	12127616	52.54%	11.609%
9	17.314	2414	2421	2430	rBV	3528384	5329929	23.09%	5.102%
10	19.617	2809	2813	2819	rVB2	240551	311157	1.35%	0.298%
11	19.934	2861	2867	2879	rBV	15844481	23081037	100.00%	22.094%
12	21.574	3140	3146	3155	rBV2	3241712	5280122	22.88%	5.054%
13	22.355	3275	3279	3285	rVB2	161365	242163	1.05%	0.232%
14	23.031	3389	3394	3401	rVB	359874	694247	3.01%	0.665%
15	23.818	3523	3528	3537	rVB	494123	1028783	4.46%	0.985%
16	24.746	3676	3686	3698	rVB2	2391030	6679287	28.94%	6.394%
17	25.857	3867	3875	3887	rVB3	569998	1747676	7.57%	1.673%
18	27.191	4094	4102	4113	rVB	527510	1778163	7.70%	1.702%

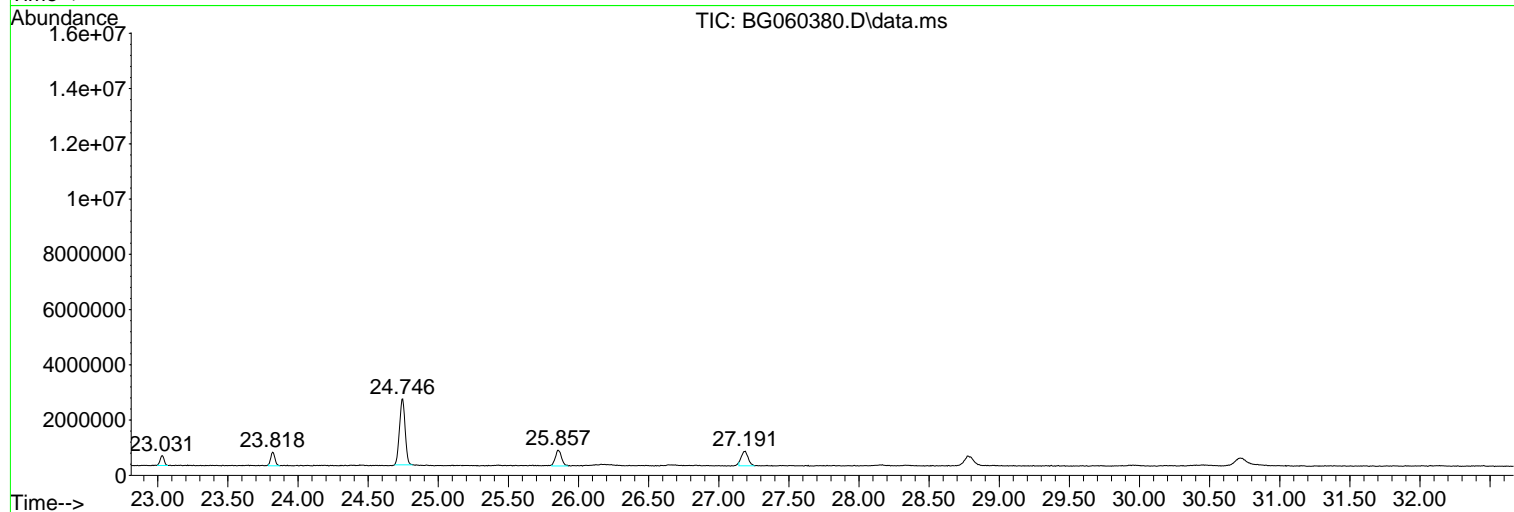
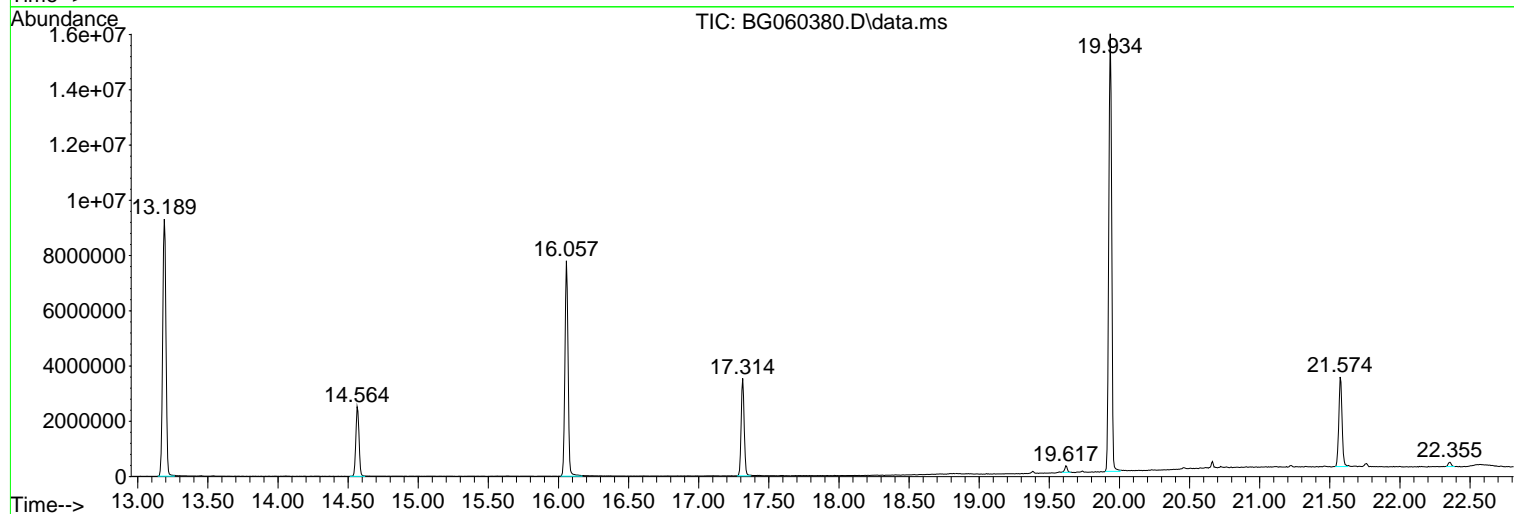
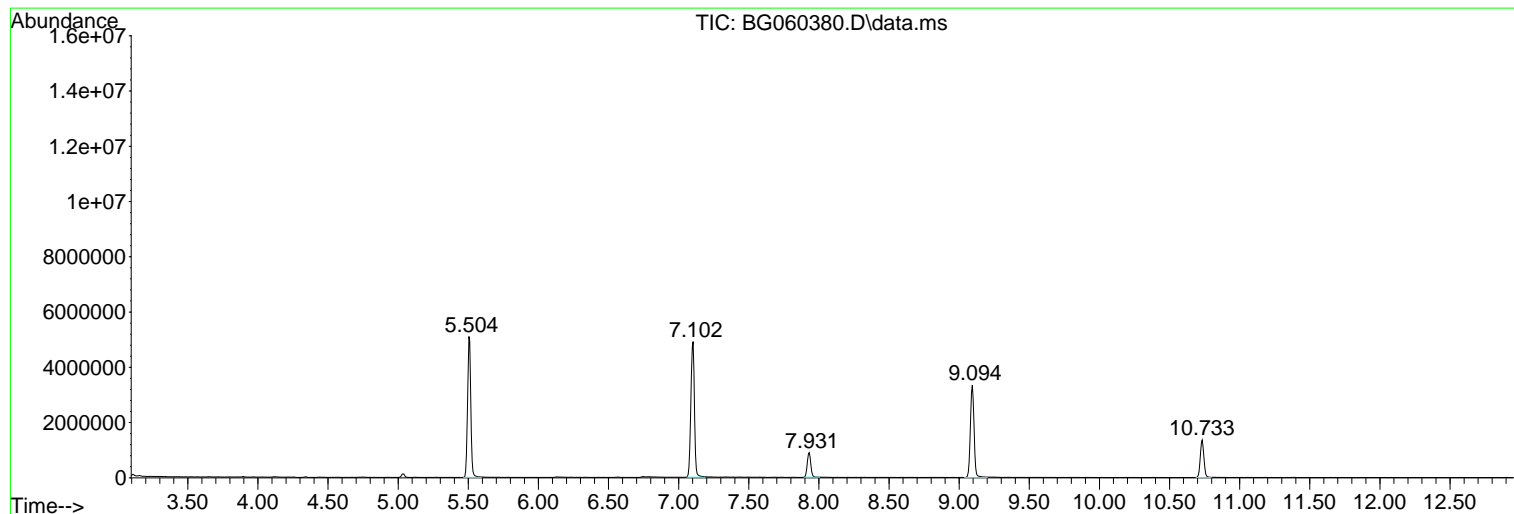
Sum of corrected areas: 104466875

Data Path : Z:\svoasrv\HPCHEM1\BNA_G\Data\BG012224\
Data File : BG060380.D
Acq On : 22 Jan 2024 11:34
Operator : MA/JU
Sample : PB158532BL
Misc :
ALS Vial : 3 Sample Multiplier: 1

Instrument :
BNA_G
ClientSampleId :
PB158532BL

Quant Method : Z:\svoasrv\HPCHEM1\BNA_G\Methods\8270-BG010824.M
Quant Title : ASP BNA STANDARDS FOR 5 POINT CALIBRATION

TIC Library : C:\Database\NIST20.L
TIC Integration Parameters: LSCINT.P



Data Path : Z:\svoasrv\HPCHEM1\BNA_G\Data\BG012224\
Data File : BG060380.D
Acq On : 22 Jan 2024 11:34
Operator : MA/JU
Sample : PB158532BL
Misc :
ALS Vial : 3 Sample Multiplier: 1

Instrument :
BNA_G
ClientSampleId :
PB158532BL

Quant Method : Z:\svoasrv\HPCHEM1\BNA_G\Methods\8270-BG010824.M
Quant Title : ASP BNA STANDARDS FOR 5 POINT CALIBRATION

TIC Library : C:\Database\NIST20.L
TIC Integration Parameters: LSCINT.P

No Library Search Compounds Detected

Data Path : Z:\svoasrv\HPCHEM1\BNA_G\Data\BG012224\
Data File : BG060380.D
Acq On : 22 Jan 2024 11:34
Operator : MA/JU
Sample : PB158532BL
Misc :
ALS Vial : 3 Sample Multiplier: 1

Instrument :
BNA_G
ClientSampleId :
PB158532BL

Quant Method : Z:\svoasrv\HPCHEM1\BNA_G\Methods\8270-BG010824.M
Quant Title : ASP BNA STANDARDS FOR 5 POINT CALIBRATION

TIC Library : C:\Database\NIST20.L
TIC Integration Parameters: LSCINT.P

TIC Top Hit name	RT	EstConc	Units	Response	#	RT	Resp	Conc
------------------	----	---------	-------	----------	---	----	------	------

-----|