

Data Path : Z:\SVOASRV\HPCHEM1\BNA G\DATA\BG012320\  
 Data File : BG044170.D  
 Acq On : 23 Jan 2020 16:57  
 Operator : JU  
 Sample : L1230-03  
 Misc :  
 ALS Vial : 8 Sample Multiplier: 1

Instrument :  
 BNA\_G  
 ClientSampleId :  
 STOCK-PILE-B

Integration Parameters: rteint.p  
 Integrator: RTE  
 Smoothing : ON  
 Sampling : 1  
 Start Thrs: 0.2  
 Stop Thrs : 0

Filtering: 5  
 Min Area: 3 % of largest Peak  
 Max Peaks: 100  
 Peak Location: TOP

If leading or trailing edge < 100 prefer < Baseline drop else tangent >  
 Peak separation: 5

Method : Z:\SVOASRV\HPCHEM1\BNA G\METHODS\8270-BG123019.M  
 Title : ASP BNA STANDARDS FOR 5 POINT CALIBRATION

Signal : TIC

peak #	R.T. min	first scan	max scan	last scan	PK TY	peak height	corr. area	corr. % max.	% of total
1	5.508	404	412	429	rBV	923879	1527040	40.55%	7.010%
2	7.100	675	683	702	rBV	936496	1777747	47.21%	8.160%
3	7.929	816	824	832	rBV	276594	473555	12.58%	2.174%
4	8.252	871	879	892	rBV	750675	1318421	35.01%	6.052%
5	9.086	1012	1021	1033	rBV	557816	1065802	28.31%	4.892%
6	10.731	1293	1301	1313	rBV	381151	707754	18.80%	3.249%
7	13.187	1712	1719	1740	rBV	1641937	2723463	72.33%	12.502%
8	14.016	1854	1860	1874	rBV	89567	156324	4.15%	0.718%
9	14.562	1946	1953	1970	rBV	646272	1097642	29.15%	5.039%
10	16.049	2200	2206	2224	rBV	1199497	1984598	52.71%	9.110%
11	17.306	2414	2420	2431	rBV	790215	1257269	33.39%	5.771%
12	17.700	2482	2487	2497	rBV3	19470	45455	1.21%	0.209%
13	18.634	2643	2646	2652	rBV2	35450	42992	1.14%	0.197%
14	19.921	2859	2865	2879	rBV	2810657	3765418	100.00%	17.285%
15	21.231	3083	3088	3100	rBV2	85758	214737	5.70%	0.986%
16	21.554	3136	3143	3152	rBV2	785128	1307129	34.71%	6.000%
17	21.765	3174	3179	3187	rVB2	49980	75269	2.00%	0.346%
18	22.353	3274	3279	3285	rBV	72263	120024	3.19%	0.551%
19	23.029	3388	3394	3404	rVB	92593	171212	4.55%	0.786%
20	23.211	3419	3425	3434	rVB	77453	147414	3.91%	0.677%
21	23.810	3519	3527	3534	rBV	94066	196514	5.22%	0.902%
22	24.662	3659	3672	3679	rBV	472099	1367893	36.33%	6.279%
23	25.808	3860	3867	3877	rVB4	54941	152060	4.04%	0.698%
24	27.118	4082	4090	4100	rVB6	25484	89096	2.37%	0.409%

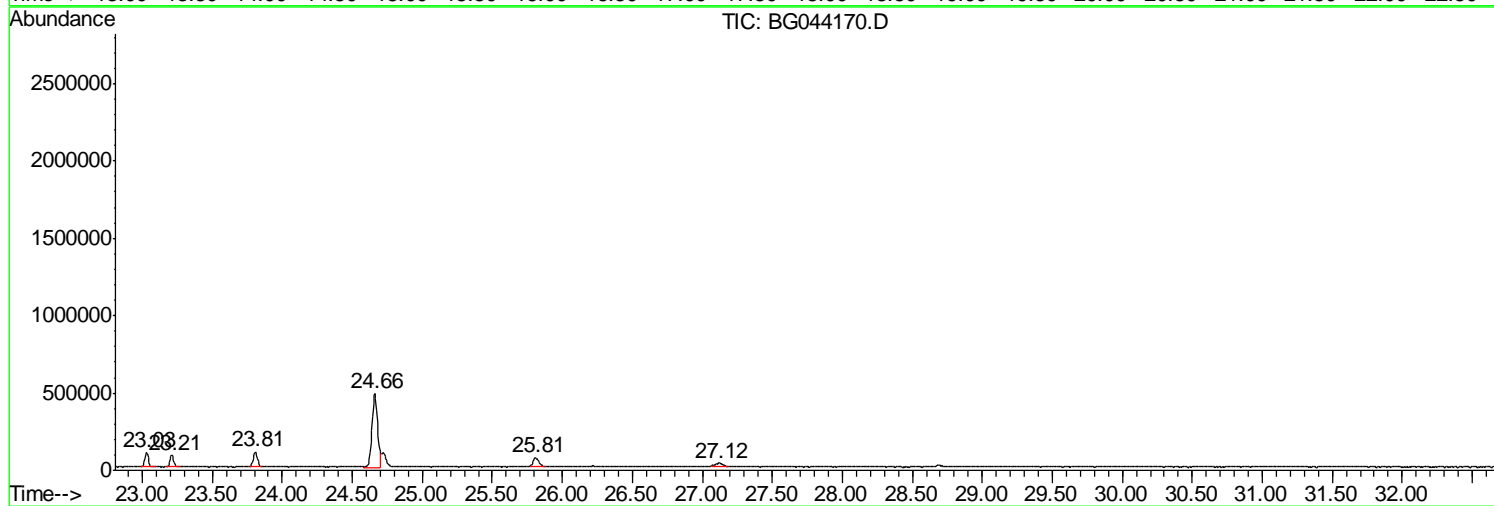
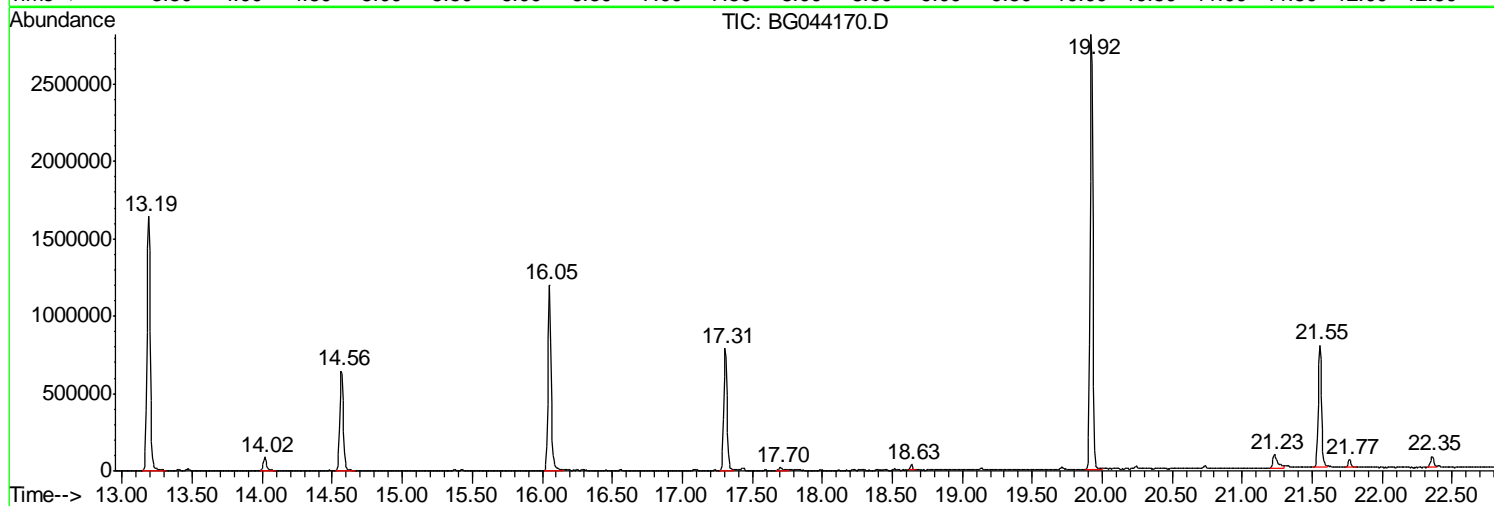
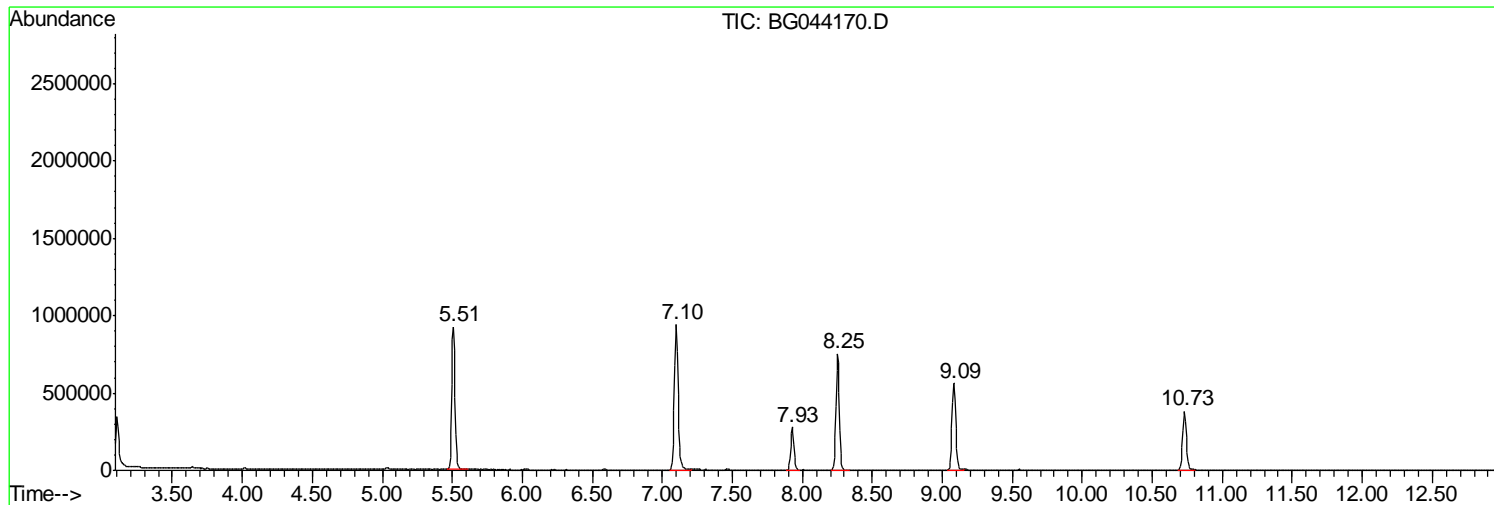
Sum of corrected areas: 21784828

Data Path : Z:\SVOASRV\HPCHEM1\BNA G\DATA\BG012320\  
Data File : BG044170.D  
Acq On : 23 Jan 2020 16:57  
Operator : JU  
Sample : L1230-03  
Misc :  
ALS Vial : 8 Sample Multiplier: 1

Instrument :  
BNA\_G  
ClientSampleId :  
STOCK-PILE-B

Quant Method : Z:\SVOASRV\HPCHEM1\BNA G\METHODS\8270-BG123019.M  
Quant Title : ASP BNA STANDARDS FOR 5 POINT CALIBRATION

TIC Library : C:\Database\NIST11.L  
TIC Integration Parameters: LSCINT.P



Data Path : Z:\SVOASRV\HPCHEM1\BNA G\DATA\BG012320\  
 Data File : BG044170.D  
 Acq On : 23 Jan 2020 16:57  
 Operator : JU  
 Sample : L1230-03  
 Misc :  
 ALS Vial : 8 Sample Multiplier: 1

Instrument :  
 BNA\_G  
 ClientSampleId :  
 STOCK-PILE-B

Quant Method : Z:\SVOASRV\HPCHEM1\BNA G\METHODS\8270-BG123019.M  
 Quant Title : ASP BNA STANDARDS FOR 5 POINT CALIBRATION

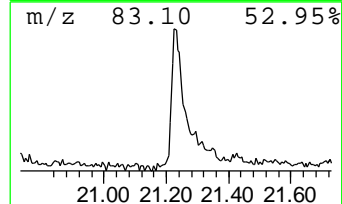
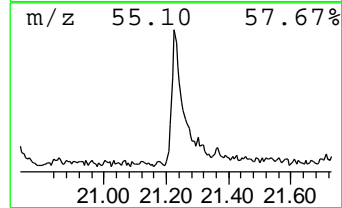
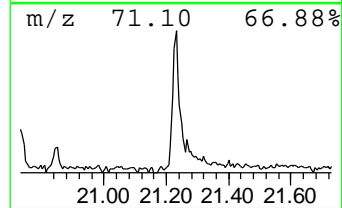
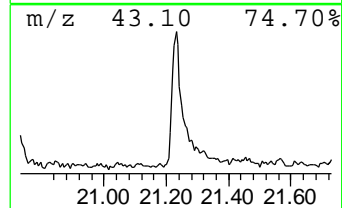
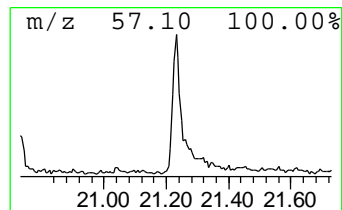
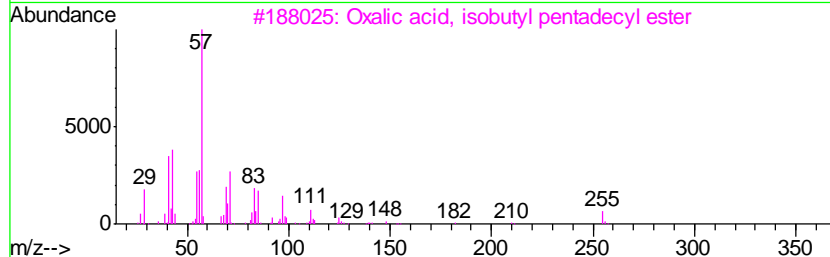
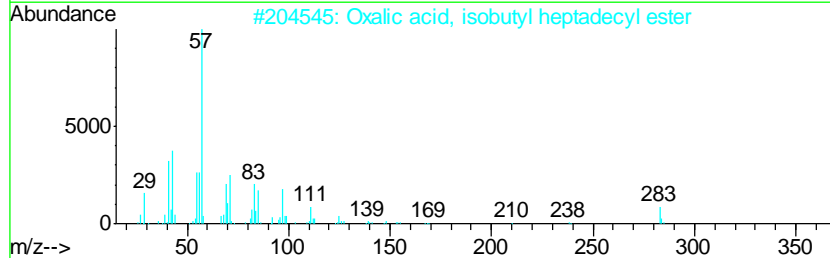
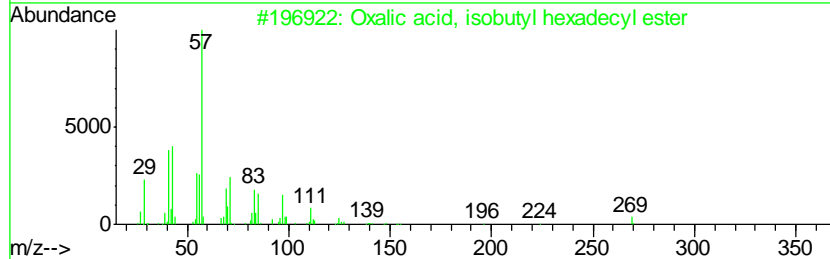
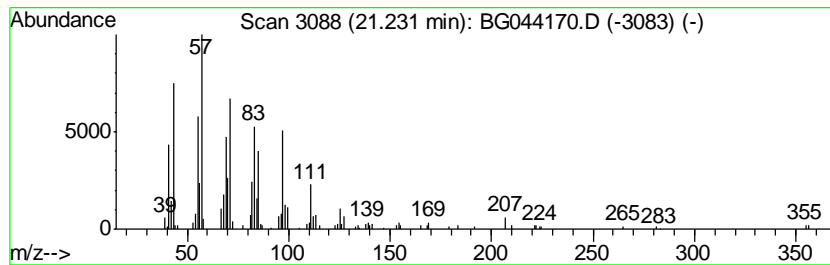
TIC Library : C:\Database\NIST11.L  
 TIC Integration Parameters: LSCINT.P

\*\*\*\*\*  
 Peak Number 2 Oxalic acid, isobutyl hexad... Concentration Rank 2

R.T.	EstConc	Area	Relative to ISTD	R.T.
21.23	3.29 ng	214737	Chrysene-d12	21.55

Hit#	of	Tentative ID	MW	MolForm	CAS#	Qual
1	5	Oxalic acid, isobutyl hexadecyl ...	370	C22H42O4	1000309-38-1	91
2		Oxalic acid, isobutyl heptadecyl...	384	C23H44O4	1000309-38-2	87
3		Oxalic acid, isobutyl pentadecyl...	356	C21H40O4	1000309-38-0	87
4		Oxalic acid, isobutyl octadecyl ...	398	C24H46O4	1000309-38-3	87
5		1-Dodecanol, 2-octyl-	298	C20H42O	005333-42-6	87



Data Path : Z:\SVOASRV\HPCHEM1\BNA G\DATA\BG012320\  
 Data File : BG044170.D  
 Acq On : 23 Jan 2020 16:57  
 Operator : JU  
 Sample : L1230-03  
 Misc :  
 ALS Vial : 8 Sample Multiplier: 1

Instrument :  
 BNA\_G  
 ClientSampled :  
 STOCK-PILE-B

Quant Method : Z:\SVOASRV\HPCHEM1\BNA G\METHODS\8270-BG123019.M  
 Quant Title : ASP BNA STANDARDS FOR 5 POINT CALIBRATION

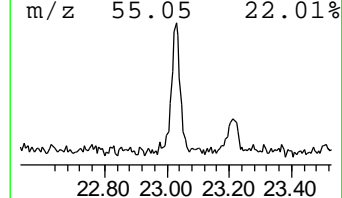
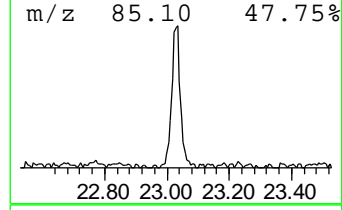
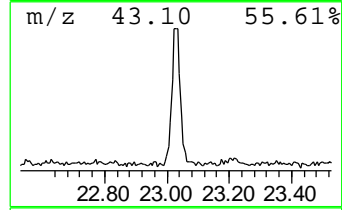
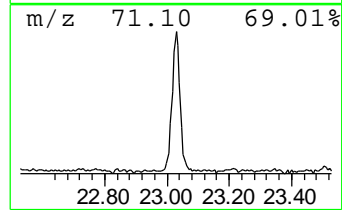
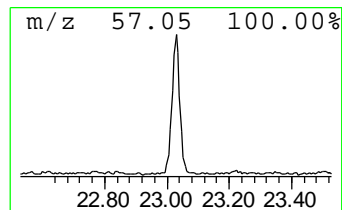
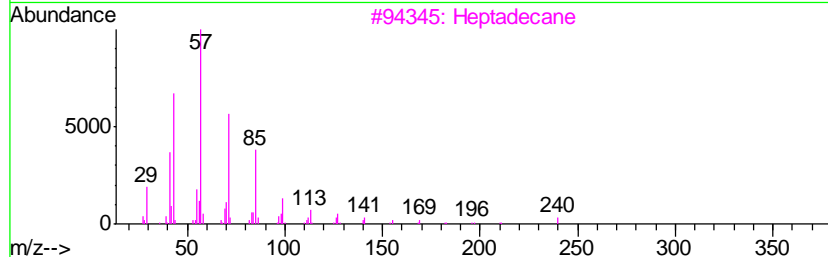
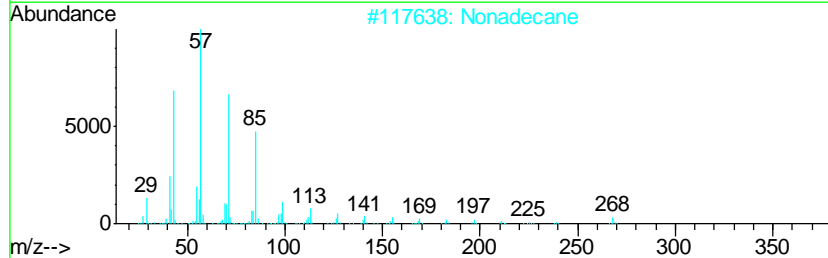
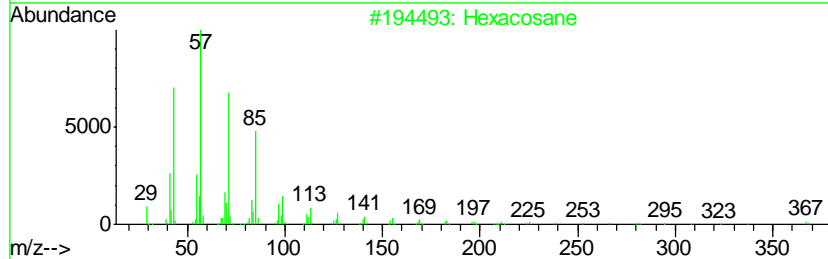
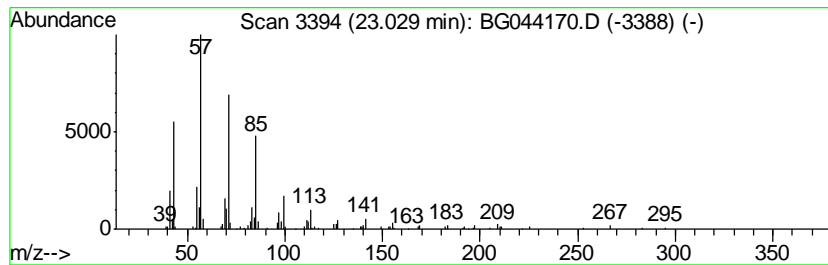
TIC Library : C:\Database\NIST11.L  
 TIC Integration Parameters: LSCINT.P

\*\*\*\*\*  
 Peak Number 3 Hexacosane Concentration Rank 4

R.T.	EstConc	Area	Relative to ISTD	R.T.
23.03	2.62 ng	171212	Chrysene-d12	21.55

Hit#	of	Tentative ID	MW	MolForm	CAS#	Qual
1	5	Hexacosane	366	C26H54	000630-01-3	94
2		Nonadecane	268	C19H40	000629-92-5	91
3		Heptadecane	240	C17H36	000629-78-7	91
4		Hexadecane	226	C16H34	000544-76-3	90
5		Heneicosane	296	C21H44	000629-94-7	87



Data Path : Z:\SVOASRV\HPCHEM1\BNA G\DATA\BG012320\  
 Data File : BG044170.D  
 Acq On : 23 Jan 2020 16:57  
 Operator : JU  
 Sample : L1230-03  
 Misc :  
 ALS Vial : 8 Sample Multiplier: 1

Instrument :  
 BNA\_G  
 ClientSampleID :  
 STOCK-PILE-B

Quant Method : Z:\SVOASRV\HPCHEM1\BNA G\METHODS\8270-BG123019.M  
 Quant Title : ASP BNA STANDARDS FOR 5 POINT CALIBRATION

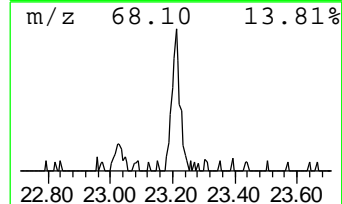
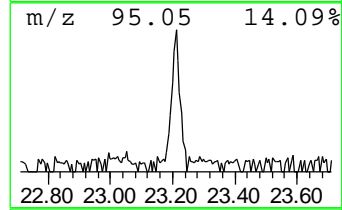
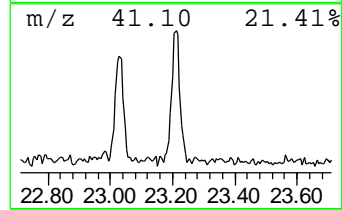
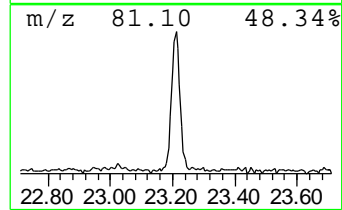
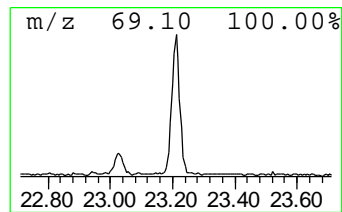
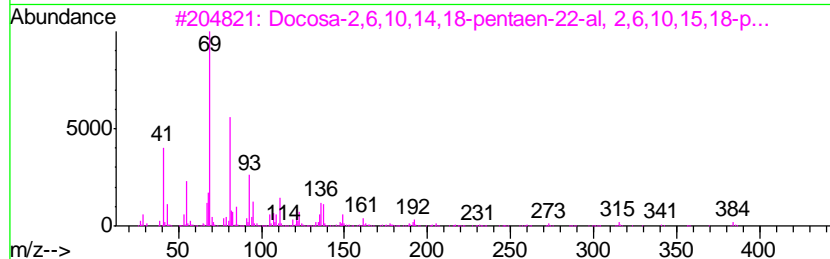
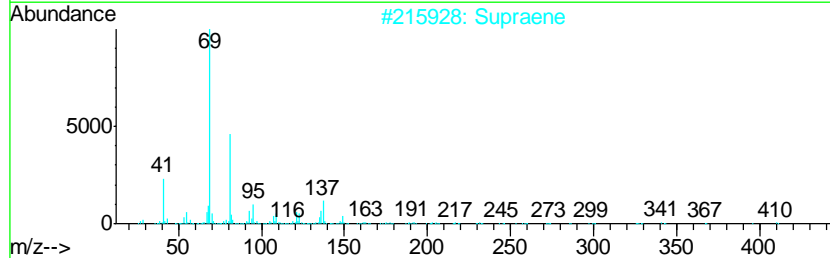
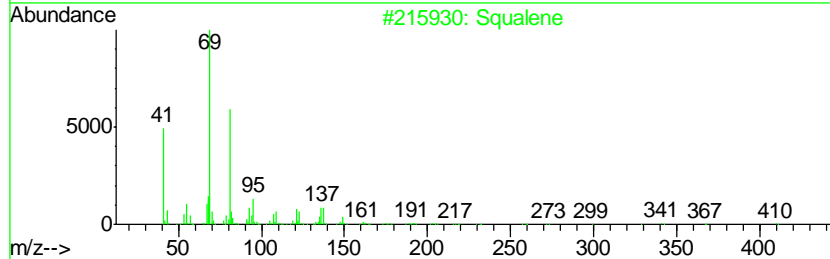
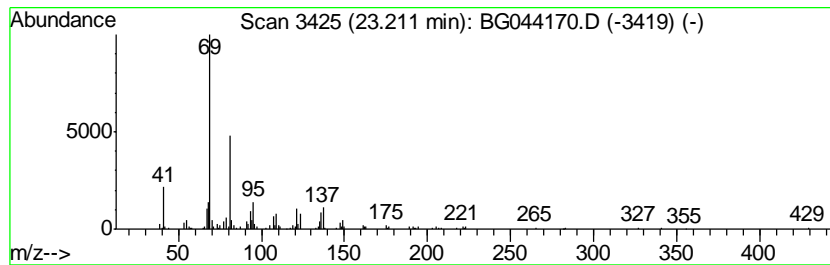
TIC Library : C:\Database\NIST11.L  
 TIC Integration Parameters: LSCINT.P

\*\*\*\*\*  
 Peak Number 4 Squalene Concentration Rank 6

R.T.	EstConc	Area	Relative to ISTD	R.T.
23.21	2.16 ng	147414	Perylene-d12	24.66

Hit#	of	Tentative ID	MW	MolForm	CAS#	Qual
1	5	Squalene	410	C30H50	000111-02-4	91
2		Supraene	410	C30H50	007683-64-9	91
3		Docosa-2,6,10,14,18-pentaen-22-a...	384	C27H44O	1000163-04-7	90
4		Farnesol isomer a	222	C15H26O	1000108-92-4	87
5		3,7,11-Trimethyl-dodeca-2,6,10-t...	236	C15H24O2	007548-13-2	83



Data Path : Z:\SVOASRV\HPCHEM1\BNA G\DATA\BG012320\  
 Data File : BG044170.D  
 Acq On : 23 Jan 2020 16:57  
 Operator : JU  
 Sample : L1230-03  
 Misc :  
 ALS Vial : 8 Sample Multiplier: 1

Instrument :  
 BNA\_G  
 ClientSampled :  
 STOCK-PILE-B

Quant Method : Z:\SVOASRV\HPCHEM1\BNA G\METHODS\8270-BG123019.M  
 Quant Title : ASP BNA STANDARDS FOR 5 POINT CALIBRATION

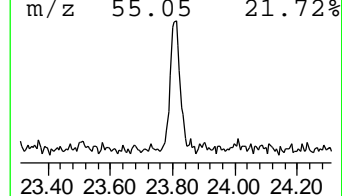
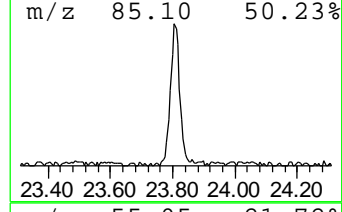
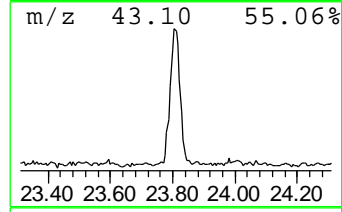
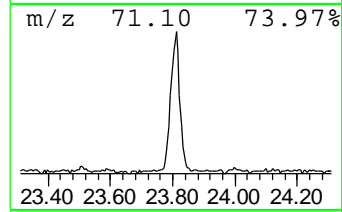
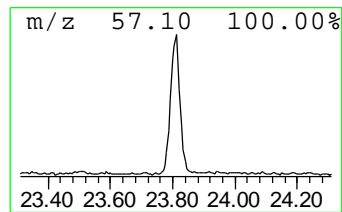
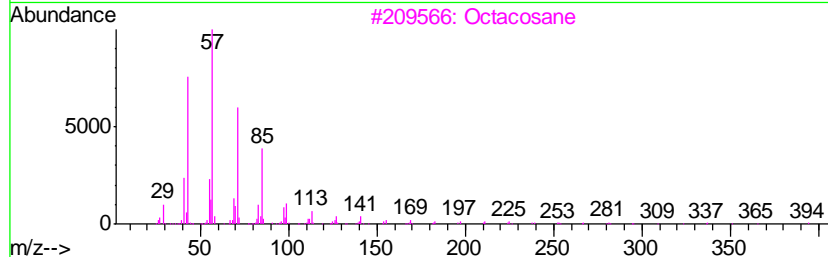
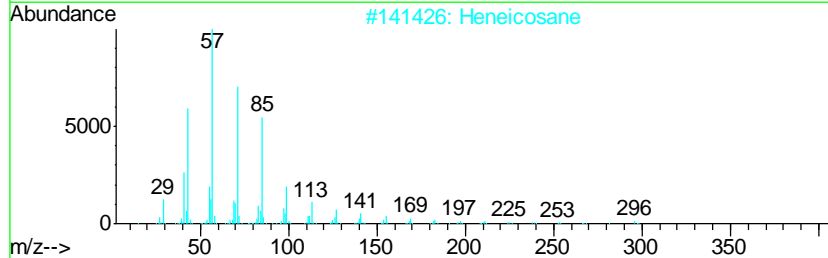
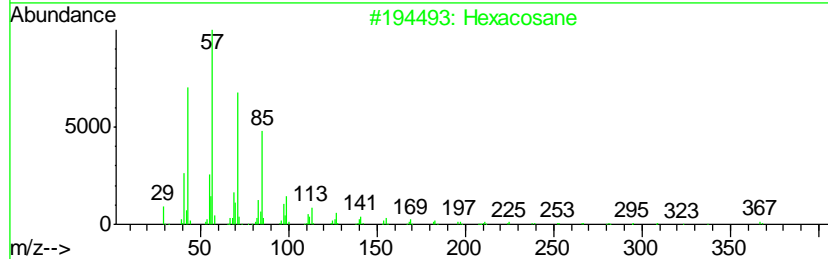
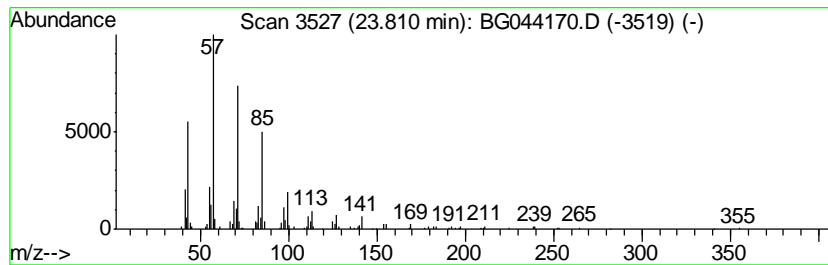
TIC Library : C:\Database\NIST11.L  
 TIC Integration Parameters: LSCINT.P

\*\*\*\*\*  
 Peak Number 5 Heneicosane Concentration Rank 3

R.T.	EstConc	Area	Relative to ISTD	R.T.
23.81	2.87 ng	196514	Perylene-d12	24.66

Hit#	of	Tentative ID	MW	MolForm	CAS#	Qual
1	5	Hexacosane	366	C26H54	000630-01-3	91
2		Heneicosane	296	C21H44	000629-94-7	91
3		Octacosane	394	C28H58	000630-02-4	91
4		Heptacosane	380	C27H56	000593-49-7	91
5		Eicosane	282	C20H42	000112-95-8	90



Data Path : Z:\SVOASRV\HPCHEM1\BNA G\DATA\BG012320\  
 Data File : BG044170.D  
 Acq On : 23 Jan 2020 16:57  
 Operator : JU  
 Sample : L1230-03  
 Misc :  
 ALS Vial : 8 Sample Multiplier: 1

Instrument :  
 BNA\_G  
 ClientSampleID :  
 STOCK-PILE-B

Quant Method : Z:\SVOASRV\HPCHEM1\BNA G\METHODS\8270-BG123019.M  
 Quant Title : ASP BNA STANDARDS FOR 5 POINT CALIBRATION

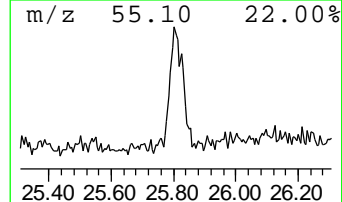
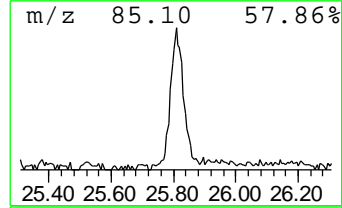
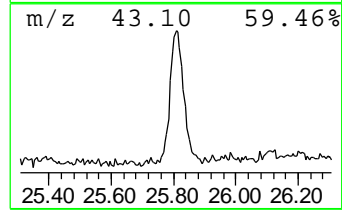
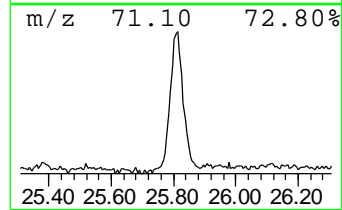
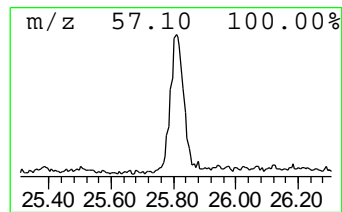
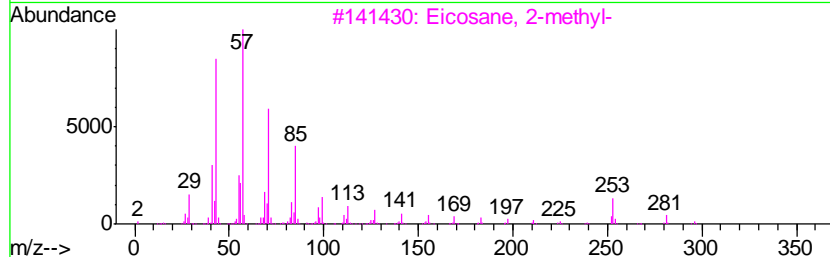
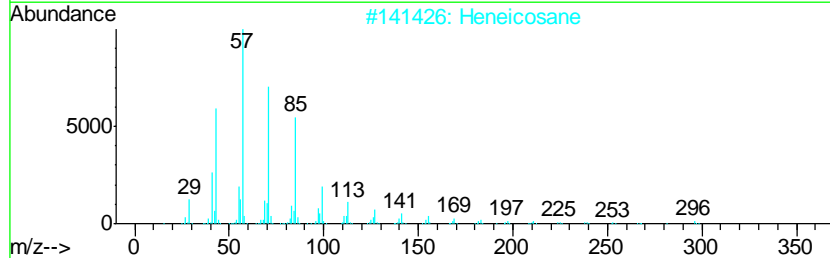
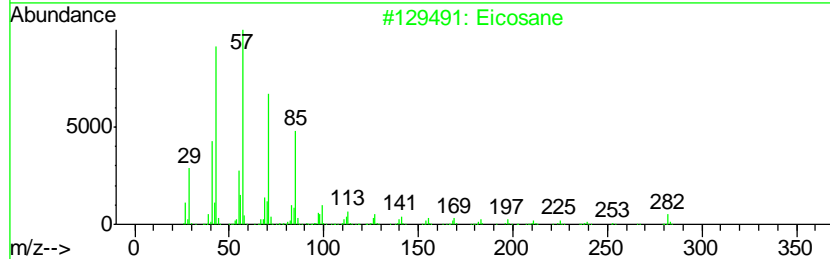
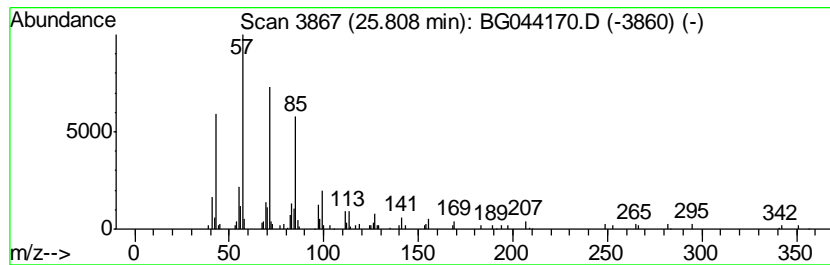
TIC Library : C:\Database\NIST11.L  
 TIC Integration Parameters: LSCINT.P

\*\*\*\*\*  
 Peak Number 6 Eicosane Concentration Rank 5

R.T.	EstConc	Area	Relative to ISTD	R.T.
25.81	2.22 ng	152060	Perylene-d12	24.66

Hit#	of	Tentative ID	MW	MolForm	CAS#	Qual
1	5	Eicosane	282	C20H42	000112-95-8	91
2		Heneicosane	296	C21H44	000629-94-7	91
3		Eicosane, 2-methyl-	296	C21H44	001560-84-5	91
4		Heptadecane	240	C17H36	000629-78-7	91
5		Octadecane	254	C18H38	000593-45-3	87



Data Path : Z:\SVOASRV\HPCHEM1\BNA\_G\DATA\BG012320\  
 Data File : BG044170.D  
 Acq On : 23 Jan 2020 16:57  
 Operator : JU  
 Sample : L1230-03  
 Misc :  
 ALS Vial : 8 Sample Multiplier: 1

Instrument :  
 BNA\_G  
 ClientSampleId :  
 STOCK-PILE-B

Quant Method : Z:\SVOASRV\HPCHEM1\BNA\_G\METHODS\8270-BG123019.M  
 Quant Title : ASP BNA STANDARDS FOR 5 POINT CALIBRATION

TIC Library : C:\Database\NIST11.L  
 TIC Integration Parameters: LSCINT.P

TIC Top Hit name	RT	EstConc	Units	Response	--Internal Standard--			
					#	RT	Resp	Conc
Oxalic acid, isob...	21.23	3.3	ng	214737	5	21.55	1307130	20.0
Hexacosane	23.03	2.6	ng	171212	5	21.55	1307130	20.0
Squalene	23.21	2.2	ng	147414	6	24.66	1367890	20.0
Heneicosane	23.81	2.9	ng	196514	6	24.66	1367890	20.0
Eicosane	25.81	2.2	ng	152060	6	24.66	1367890	20.0