

Data Path : Z:\HPCHEM1\BNA G\DATA\BG012417\
 Data File : BG025628.D
 Acq On : 25 Jan 2017 4:22
 Operator : UM/SJ
 Sample : I1315-05
 Misc :
 ALS Vial : 28 Sample Multiplier: 1

Instrument :
 BNA_G
 ClientSampled :
 BDN32

Integration Parameters: LSCINT.P

Integrator: RTE
 Smoothing : ON
 Sampling : 1
 Start Thrs: 0.1
 Stop Thrs : 0

Filtering: 5
 Min Area: 0.1 % of largest Peak
 Max Peaks: 100
 Peak Location: TOP

If leading or trailing edge < 100 prefer < Baseline drop else tangent >
 Peak separation: 1

Method : Z:\HPCHEM1\BNA G\METHODS\SOM02.2-EPA-BG011817.M
 Title : SVOA CALIBRATION

Signal : TIC

peak #	R.T. min	first scan	max scan	last scan	PK TY	peak height	corr. area	corr. % max.	% of total
1	3.075	39	40	50	rVB4	15956	29042	0.47%	0.071%
2	3.510	108	114	118	rBV7	14448	30399	0.49%	0.075%
3	4.279	237	245	251	rBV9	12894	32871	0.53%	0.081%
4	4.726	318	321	330	rVB7	5777	13837	0.22%	0.034%
5	5.378	428	432	437	rBV3	6031	14274	0.23%	0.035%
6	6.071	547	550	557	rBV5	6168	17104	0.28%	0.042%
7	7.341	756	766	782	rBV2	216415	531409	8.62%	1.303%
8	7.493	786	792	810	rVB	180667	340340	5.52%	0.835%
9	7.711	822	829	840	rBV	228805	449787	7.30%	1.103%
10	8.175	900	908	922	rVB	266218	493587	8.01%	1.210%
11	8.898	1021	1031	1046	rBV2	238118	501348	8.13%	1.229%
12	9.279	1091	1096	1099	rBV4	7250	13585	0.22%	0.033%
13	9.362	1102	1110	1124	rBV	279346	544445	8.83%	1.335%
14	9.667	1155	1162	1170	rBV5	11638	33725	0.55%	0.083%
15	10.090	1227	1234	1247	rVV2	235180	475127	7.71%	1.165%
16	10.643	1320	1328	1351	rBV	278280	679725	11.03%	1.667%
17	11.001	1381	1389	1398	rBV	396528	759342	12.32%	1.862%
18	11.160	1406	1416	1439	rBV2	85740	250849	4.07%	0.615%
19	12.628	1657	1666	1667	rVB5	6578	14950	0.24%	0.037%
20	13.586	1825	1829	1833	rVB5	8184	14941	0.24%	0.037%
21	13.657	1833	1841	1846	rBV5	7801	20811	0.34%	0.051%
22	14.203	1927	1934	1939	rBV	705822	1102922	17.89%	2.704%
23	14.250	1939	1942	1955	rVB3	127611	207275	3.36%	0.508%
24	14.503	1978	1985	1996	rBV	819916	1392596	22.59%	3.415%
25	14.650	2005	2010	2015	rVB3	22808	32733	0.53%	0.080%
26	14.808	2029	2037	2048	rBV	780165	1245533	20.20%	3.054%
27	15.055	2071	2079	2093	rBV3	179505	512407	8.31%	1.256%
28	15.261	2109	2114	2123	rVB10	9638	21108	0.34%	0.052%
29	15.560	2154	2165	2167	rBV7	13629	24225	0.39%	0.059%
30	15.596	2167	2171	2175	rVB	61095	70402	1.14%	0.173%
31	15.795	2195	2205	2213	rBV2	1227489	1981751	32.15%	4.859%
32	15.942	2224	2230	2243	rBV2	271321	550311	8.93%	1.349%
33	16.036	2243	2246	2253	rVB7	26203	43941	0.71%	0.108%
34	16.224	2272	2278	2280	rBV6	14100	22627	0.37%	0.055%

Data Path : Z:\HPCHEM1\BNA G\DATA\BG012417\
 Data File : BG025628.D
 Acq On : 25 Jan 2017 4:22
 Operator : UM/SJ
 Sample : I1315-05
 Misc :
 ALS Vial : 28 Sample Multiplier: 1

Instrument :
 BNA_G
 ClientSampleId :
 BDN32

Integration Parameters: LSCINT.P

Integrator: RTE
 Smoothing : ON
 Sampling : 1
 Start Thrs: 0.1
 Stop Thrs : 0

Filtering: 5
 Min Area: 0.1 % of largest Peak
 Max Peaks: 100
 Peak Location: TOP

If leading or trailing edge < 100 prefer < Baseline drop else tangent >
 Peak separation: 1

Method : Z:\HPCHEM1\BNA G\METHODS\SOM02.2-EPA-BG011817.M
 Title : SVOA CALIBRATION

35	16.453	2312	2317	2326	rBV3	72993	126828	2.06%	0.311%
36	16.812	2375	2378	2381	rVB4	9674	13764	0.22%	0.034%
37	16.859	2381	2386	2390	rVB5	14212	25361	0.41%	0.062%
38	16.959	2401	2403	2409	rBV6	9409	13991	0.23%	0.034%
39	17.076	2419	2423	2432	rBV10	12705	26034	0.42%	0.064%
40	17.247	2444	2452	2457	rBV	58382	87485	1.42%	0.215%
41	17.299	2457	2461	2465	rVB5	18836	26916	0.44%	0.066%
42	17.346	2465	2469	2472	rBV5	10599	16788	0.27%	0.041%
43	17.552	2497	2504	2514	rBV	1099276	1691367	27.44%	4.147%
44	17.652	2514	2521	2540	rVB	1440866	2314340	37.54%	5.675%
45	17.793	2542	2545	2551	rBV6	9525	19671	0.32%	0.048%
46	17.981	2571	2577	2581	rBV2	27103	38696	0.63%	0.095%
47	18.287	2623	2629	2633	rVV7	9895	16356	0.27%	0.040%
48	18.398	2640	2648	2653	rBV7	35581	73368	1.19%	0.180%
49	18.480	2658	2662	2667	rVB5	13796	23499	0.38%	0.058%
50	18.580	2673	2679	2685	rVV6	35381	52497	0.85%	0.129%
51	18.710	2695	2701	2705	rVV7	11527	22296	0.36%	0.055%
52	19.209	2781	2786	2790	rBV7	11629	16324	0.26%	0.040%
53	19.503	2830	2836	2838	rBV6	7559	14105	0.23%	0.035%
54	19.567	2842	2847	2858	rBV4	26781	49102	0.80%	0.120%
55	19.673	2860	2865	2867	rBV5	11072	16409	0.27%	0.040%
56	19.791	2879	2885	2895	rBV	5241900	6164965	100.00%	15.117%
57	19.861	2895	2897	2901	rVV5	20936	24540	0.40%	0.060%
58	19.932	2901	2909	2917	rVV	1853286	2890034	46.88%	7.087%
59	20.331	2972	2977	2983	rBV8	16289	34602	0.56%	0.085%
60	20.390	2983	2987	2991	rBV4	32316	49240	0.80%	0.121%
61	20.707	3038	3041	3044	rBV5	14132	21820	0.35%	0.054%
62	20.748	3045	3048	3054	rVV7	22483	38951	0.63%	0.096%
63	20.831	3054	3062	3069	rVV	4331583	5155826	83.63%	12.643%
64	20.889	3069	3072	3077	rVB5	38957	53569	0.87%	0.131%
65	21.207	3123	3126	3129	rBV5	9727	14148	0.23%	0.035%
66	21.312	3141	3144	3146	rBV4	13026	14245	0.23%	0.035%
67	21.406	3153	3160	3174	rBV4	78905	280938	4.56%	0.689%
68	21.847	3227	3235	3248	rBV	1138553	2105864	34.16%	5.164%
69	21.965	3248	3255	3263	rVB6	49501	94610	1.53%	0.232%
70	22.035	3263	3267	3269	rBV5	9621	13978	0.23%	0.034%
71	22.070	3269	3273	3275	rVB5	10683	13576	0.22%	0.033%

Data Path : Z:\HPCHEM1\BNA G\DATA\BG012417\
 Data File : BG025628.D
 Acq On : 25 Jan 2017 4:22
 Operator : UM/SJ
 Sample : I1315-05
 Misc :
 ALS Vial : 28 Sample Multiplier: 1

Instrument :
 BNA_G
 ClientSampleId :
 BDN32

Integration Parameters: LSCINT.P

Integrator: RTE
 Smoothing : ON
 Sampling : 1
 Start Thrs: 0.1
 Stop Thrs : 0

Filtering: 5
 Min Area: 0.1 % of largest Peak
 Max Peaks: 100
 Peak Location: TOP

If leading or trailing edge < 100 prefer < Baseline drop else tangent >
 Peak separation: 1

Method : Z:\HPCHEM1\BNA G\METHODS\SOM02.2-EPA-BG011817.M
 Title : SVOA CALIBRATION

72	22.299	3310	3312	3316	rBV5	14532	21231	0.34%	0.052%
73	22.582	3356	3360	3367	rVB5	45198	74432	1.21%	0.183%
74	22.634	3367	3369	3373	rBV5	13259	20841	0.34%	0.051%
75	22.963	3421	3425	3427	rBV5	12048	14640	0.24%	0.036%
76	23.093	3444	3447	3449	rBV4	13133	16759	0.27%	0.041%
77	23.292	3475	3481	3489	rBV6	65932	136588	2.22%	0.335%
78	23.381	3494	3496	3500	rVV5	13942	15742	0.26%	0.039%
79	23.416	3500	3502	3506	rVB5	16584	14191	0.23%	0.035%
80	23.492	3510	3515	3523	rBV10	35882	82898	1.34%	0.203%
81	23.627	3527	3538	3539	rBV10	14616	44893	0.73%	0.110%
82	24.127	3616	3623	3630	rVB4	59420	138282	2.24%	0.339%
83	24.867	3746	3749	3755	rBV8	13808	28778	0.47%	0.071%
84	24.996	3759	3771	3783	rBV2	878706	2665797	43.24%	6.537%
85	25.102	3783	3789	3799	rVV3	89503	227493	3.69%	0.558%
86	25.231	3799	3811	3828	rVB2	667793	2055677	33.34%	5.041%
87	25.413	3841	3842	3851	rBV9	17989	22305	0.36%	0.055%
88	25.472	3851	3852	3857	rBV5	13294	14938	0.24%	0.037%
89	25.766	3900	3902	3908	rVV7	13098	20942	0.34%	0.051%
90	25.813	3908	3910	3915	rVB5	12250	19318	0.31%	0.047%
91	26.271	3974	3988	3996	rBV6	84692	253337	4.11%	0.621%
92	26.665	4052	4055	4057	rBV4	12246	17380	0.28%	0.043%
93	26.859	4086	4088	4094	rBV7	12746	22887	0.37%	0.056%
94	27.076	4121	4125	4127	rBV5	14627	19141	0.31%	0.047%
95	27.658	4215	4224	4238	rVB5	68997	271632	4.41%	0.666%
96	29.356	4502	4513	4526	rBV9	52919	212679	3.45%	0.522%
97	29.473	4531	4533	4536	rVB4	14125	15856	0.26%	0.039%
98	31.271	4835	4839	4840	rBV4	15438	21722	0.35%	0.053%
99	31.412	4853	4863	4874	rVB4	36962	157442	2.55%	0.386%
100	32.300	5008	5014	5018	rVB9	13199	27921	0.45%	0.068%

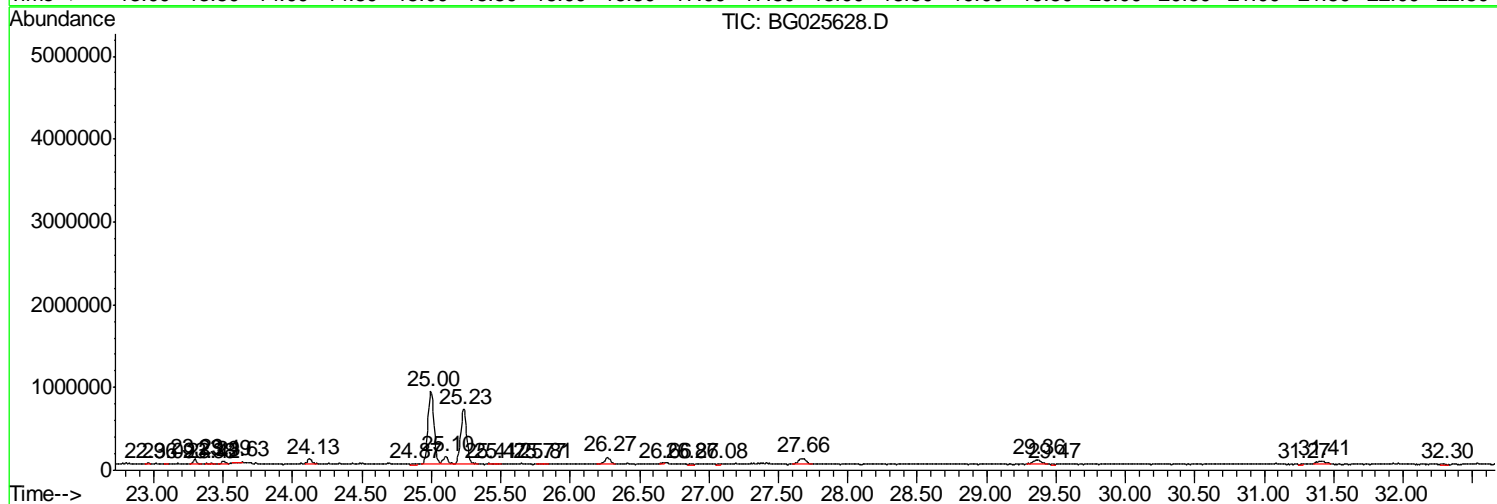
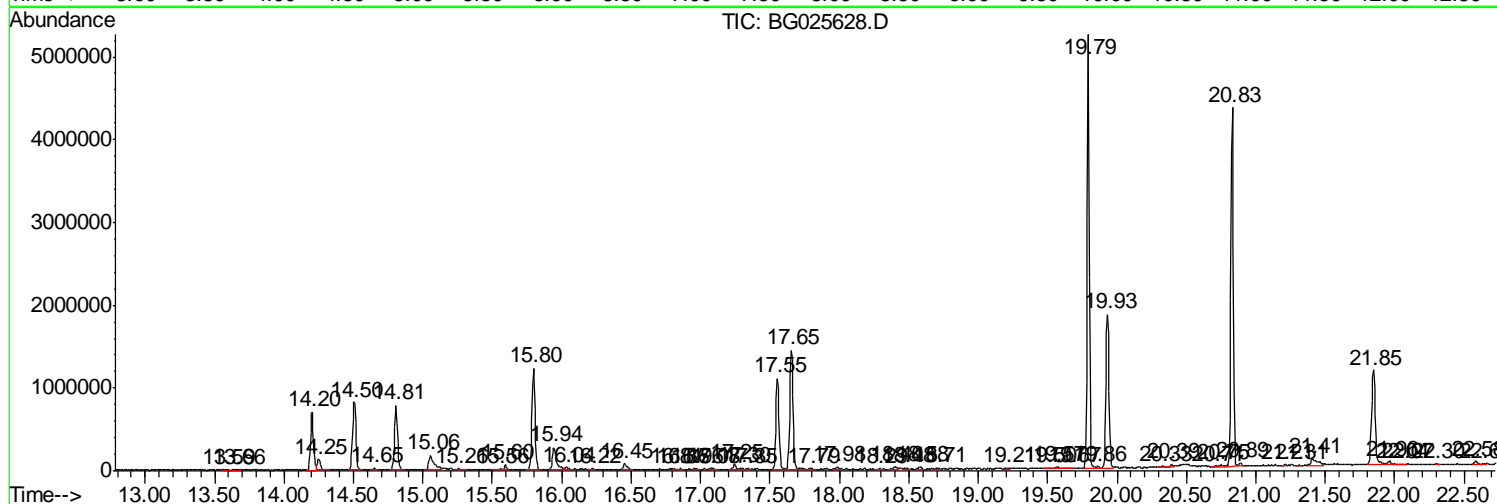
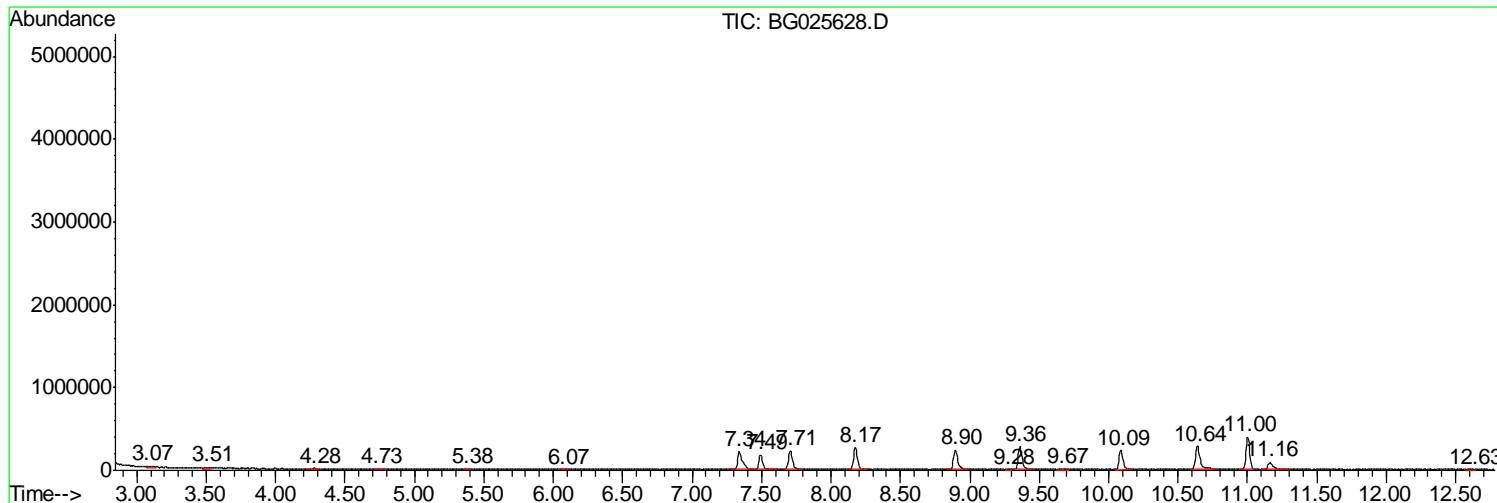
Sum of corrected areas: 40781174

Data Path : Z:\HPCHEM1\BNA G\DATA\BG012417\
 Data File : BG025628.D
 Acq On : 25 Jan 2017 4:22
 Operator : UM/SJ
 Sample : I1315-05
 Misc :
 ALS Vial : 28 Sample Multiplier: 1

Instrument :
 BNA_G
 ClientSampleId :
 BDN32

Quant Method : Z:\HPCHEM1\BNA G\METHODS\SOM02.2-EPA-BG011817.M
 Quant Title : SVOA CALIBRATION

TIC Library : C:\DATABASE\NIST11.L
 TIC Integration Parameters: LSCINT.P



Data Path : Z:\HPCHEM1\BNA G\DATA\BG012417\
 Data File : BG025628.D
 Acq On : 25 Jan 2017 4:22
 Operator : UM/SJ
 Sample : I1315-05
 Misc :
 ALS Vial : 28 Sample Multiplier: 1

Instrument :
 BNA_G
 ClientSampleID :
 BDN32

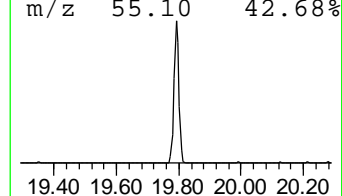
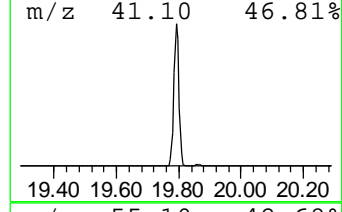
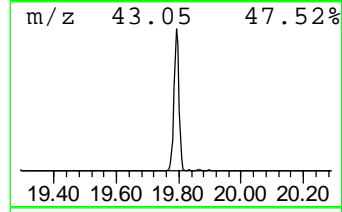
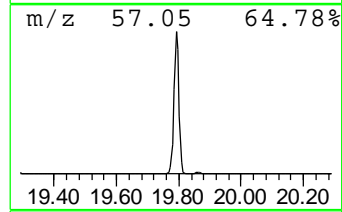
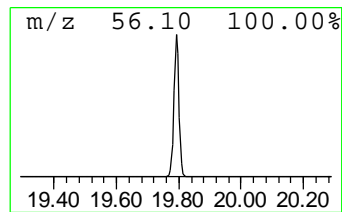
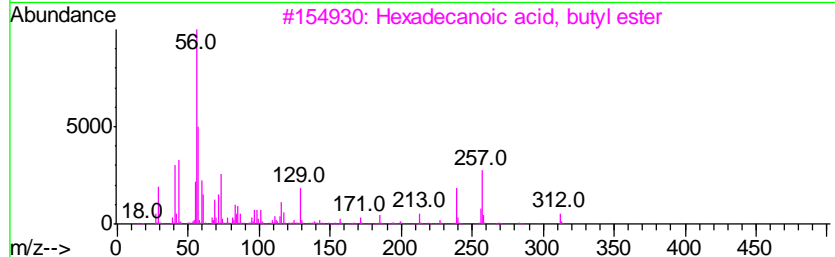
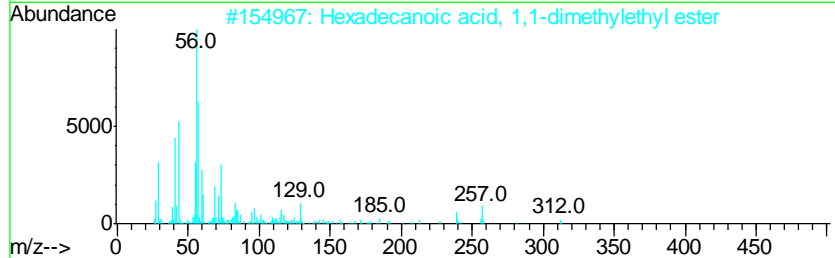
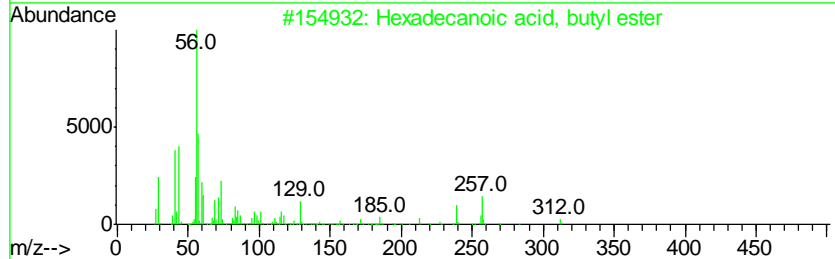
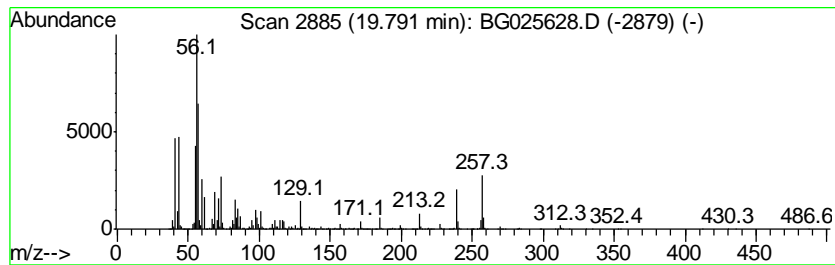
Quant Method : Z:\HPCHEM1\BNA G\METHODS\SOM02.2-EPA-BG011817.M
 Quant Title : SVOA CALIBRATION

TIC Library : C:\DATABASE\NIST11.L
 TIC Integration Parameters: LSCINT.P

 Peak Number 1 Hexadecanoic acid, butyl ester Concentration Rank 1

R.T.	EstConc	Area	Relative to ISTD	R.T.
19.79	58.55 ng/ul	6164970	Chrysene-d12	21.85

Hit#	of	Tentative ID	MW	MolForm	CAS#	Qual
1	5	Hexadecanoic acid, butyl ester	312	C20H40O2	000111-06-8	95
2		Hexadecanoic acid, 1,1-dimethyle...	312	C20H40O2	031158-91-5	90
3		Hexadecanoic acid, butyl ester	312	C20H40O2	000111-06-8	90
4		Hexadecanoic acid, 2-methylpropy...	312	C20H40O2	000110-34-9	50
5		1,3-Hexanediol, 2-ethyl-	146	C8H18O2	000094-96-2	38



Data Path : Z:\HPCHEM1\BNA G\DATA\BG012417\
 Data File : BG025628.D
 Acq On : 25 Jan 2017 4:22
 Operator : UM/SJ
 Sample : I1315-05
 Misc :
 ALS Vial : 28 Sample Multiplier: 1

Instrument :
 BNA_G
 ClientSampleID :
 BDN32

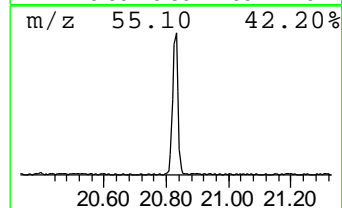
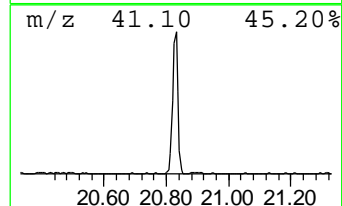
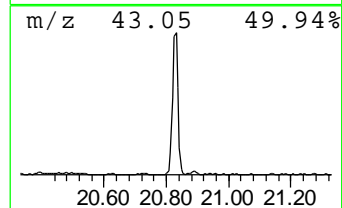
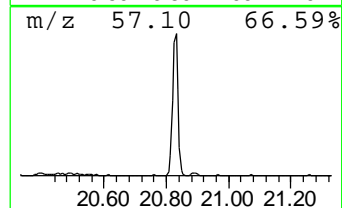
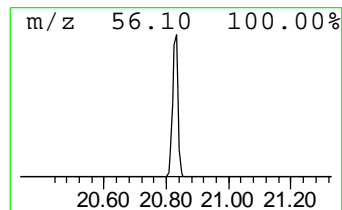
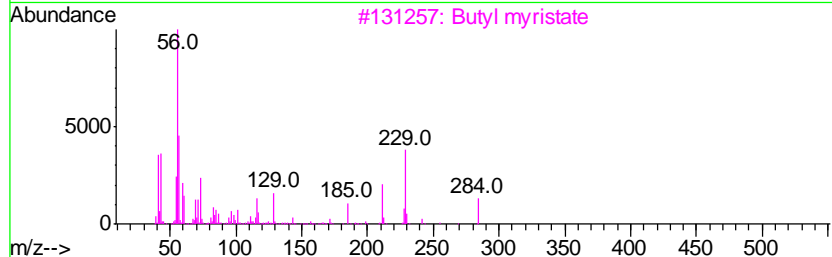
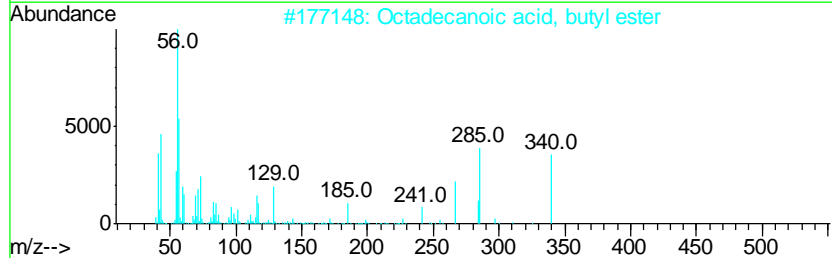
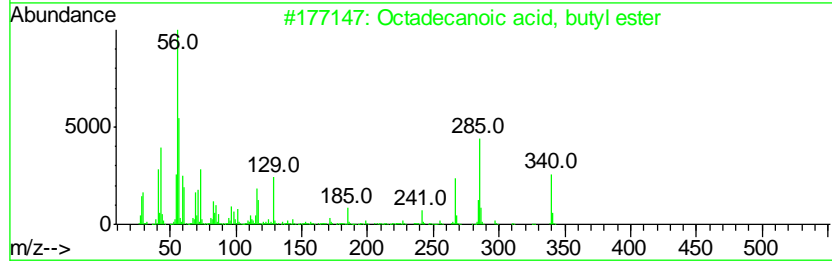
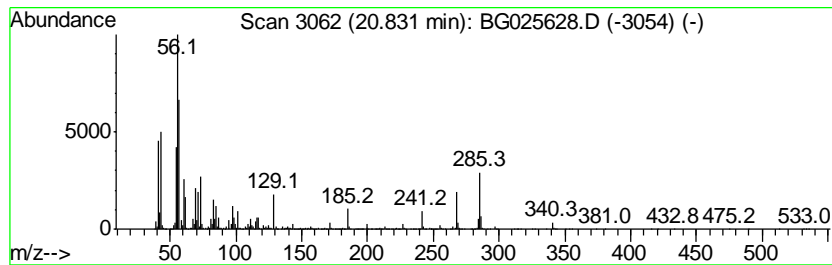
Quant Method : Z:\HPCHEM1\BNA G\METHODS\SOM02.2-EPA-BG011817.M
 Quant Title : SVOA CALIBRATION

TIC Library : C:\DATABASE\NIST11.L
 TIC Integration Parameters: LSCINT.P

 Peak Number 2 Octadecanoic acid, butyl ester Concentration Rank 2

R.T.	EstConc	Area	Relative to ISTD	R.T.
20.83	48.97 ng/ul	5155830	Chrysene-d12	21.85

Hit#	of	Tentative ID	MW	MolForm	CAS#	Qual
1	5	Octadecanoic acid, butyl ester	340	C22H44O2	000123-95-5	87
2		Octadecanoic acid, butyl ester	340	C22H44O2	000123-95-5	58
3		Butyl myristate	284	C18H36O2	000110-36-1	50
4		Octadecanoic acid, 2-methylpropy...	340	C22H44O2	000646-13-9	30
5		Cyclopropane, propyl-	84	C6H12	002415-72-7	30



Data Path : Z:\HPCHEM1\BNA G\DATA\BG012417\
 Data File : BG025628.D
 Acq On : 25 Jan 2017 4:22
 Operator : UM/SJ
 Sample : I1315-05
 Misc :
 ALS Vial : 28 Sample Multiplier: 1

Instrument :
 BNA_G
 ClientSampleId :
 BDN32

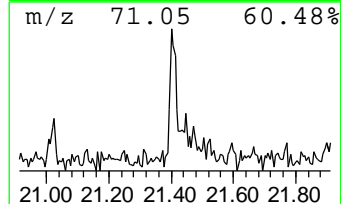
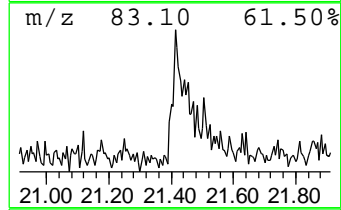
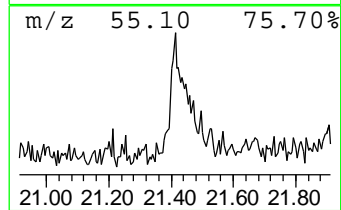
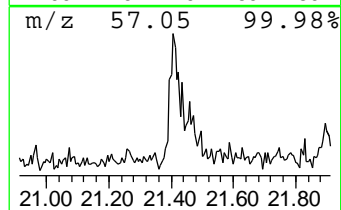
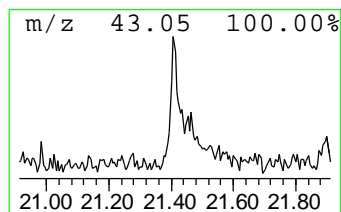
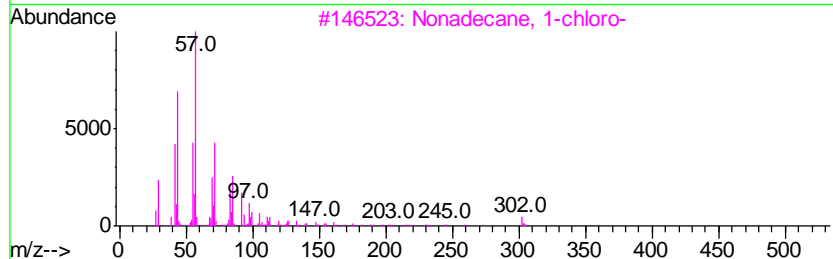
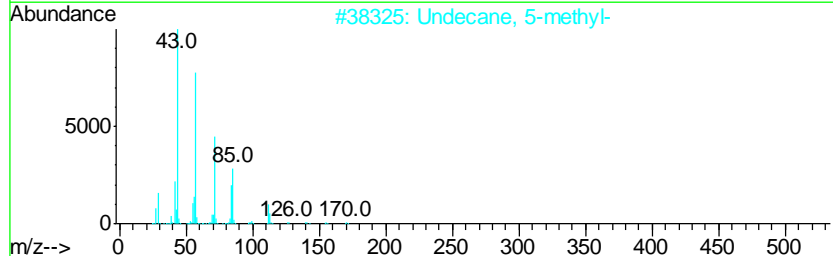
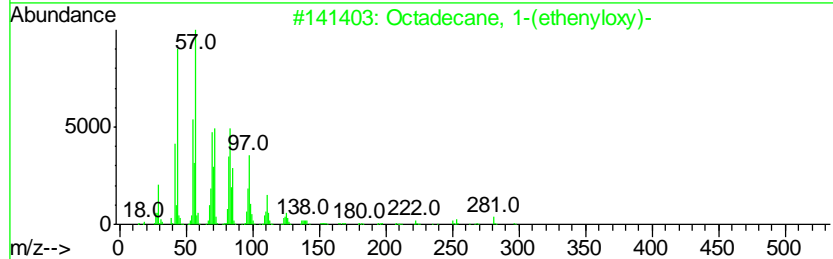
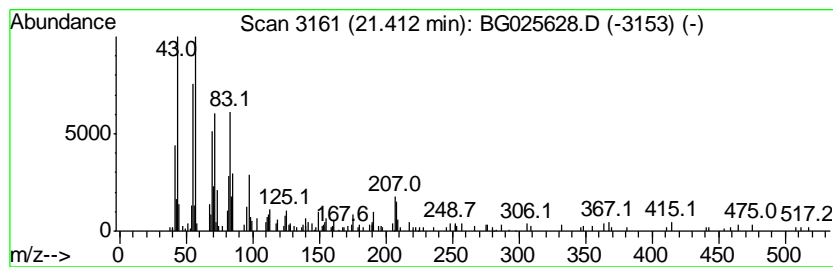
Quant Method : Z:\HPCHEM1\BNA G\METHODS\SOM02.2-EPA-BG011817.M
 Quant Title : SVOA CALIBRATION

TIC Library : C:\DATABASE\NIST11.L
 TIC Integration Parameters: LSCINT.P

 Peak Number 3 Octadecane, 1-(ethenyloxy)- Concentration Rank 3

R.T.	EstConc	Area	Relative to ISTD	R.T.
21.41	2.67 ng/ul	280938	Chrysene-d12	21.85

Hit#	of	Tentative ID	MW	MolForm	CAS#	Qual
1	5	Octadecane, 1-(ethenyloxy)-	296	C20H40O	000930-02-9	74
2		Undecane, 5-methyl-	170	C12H26	001632-70-8	52
3		Nonadecane, 1-chloro-	302	C19H39Cl	062016-76-6	49
4		Dodecane	170	C12H26	000112-40-3	49
5		Dodecane	170	C12H26	000112-40-3	49



Data Path : Z:\HPCHEM1\BNA G\DATA\BG012417\
 Data File : BG025628.D
 Acq On : 25 Jan 2017 4:22
 Operator : UM/SJ
 Sample : I1315-05
 Misc :
 ALS Vial : 28 Sample Multiplier: 1

Instrument :
 BNA_G
 ClientSampleID :
 BDN32

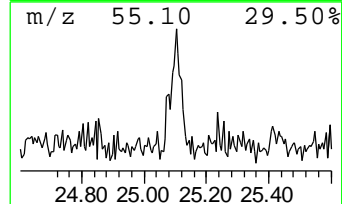
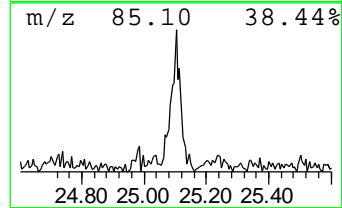
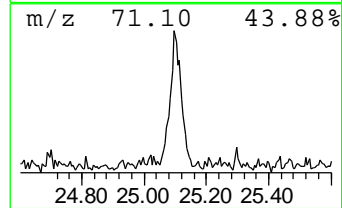
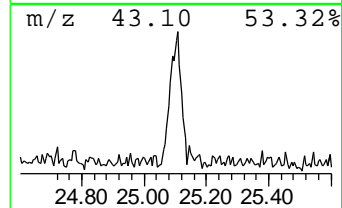
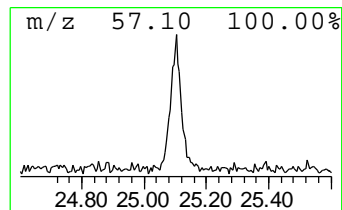
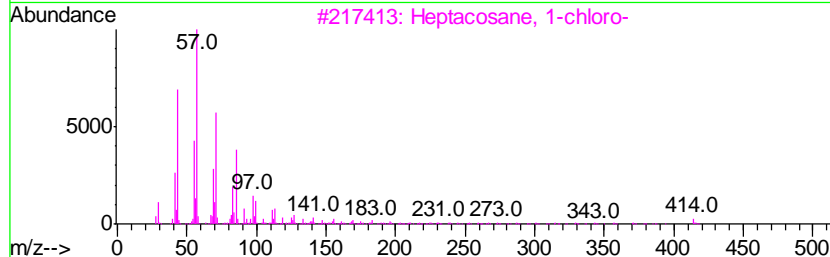
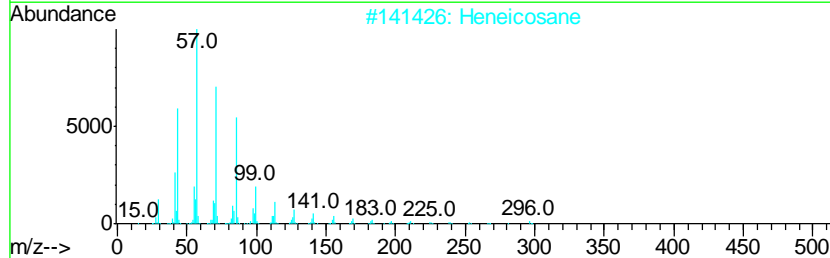
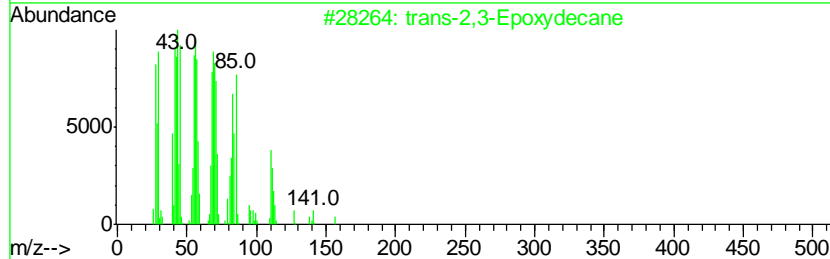
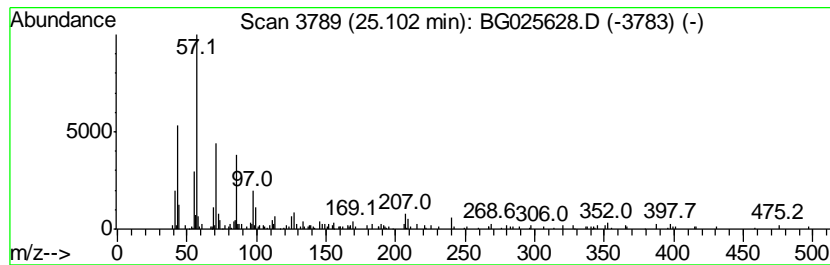
Quant Method : Z:\HPCHEM1\BNA G\METHODS\SOM02.2-EPA-BG011817.M
 Quant Title : SVOA CALIBRATION

TIC Library : C:\DATABASE\NIST11.L
 TIC Integration Parameters: LSCINT.P

 Peak Number 4 trans-2,3-Epoxydecane Concentration Rank 6

R.T.	EstConc	Area	Relative to ISTD	R.T.
25.10	2.21 ng/ul	227493	Perylene-d12	25.23

Hit#	of	Tentative ID	MW	MolForm	CAS#	Qual
1	5	trans-2,3-Epoxydecane	156	C10H20O	054125-39-2	91
2		Heneicosane	296	C21H44	000629-94-7	86
3		Heptacosane, 1-chloro-	414	C27H55Cl	062016-79-9	64
4		Nonadecane	268	C19H40	000629-92-5	64
5		Sulfurous acid, butyl heptadecyl...	376	C21H44O3S	1000309-18-4	64



Data Path : Z:\HPCHEM1\BNA G\DATA\BG012417\
 Data File : BG025628.D
 Acq On : 25 Jan 2017 4:22
 Operator : UM/SJ
 Sample : I1315-05
 Misc :
 ALS Vial : 28 Sample Multiplier: 1

Instrument :
 BNA_G
 ClientSampled :
 BDN32

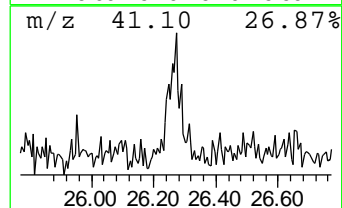
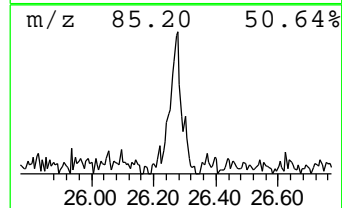
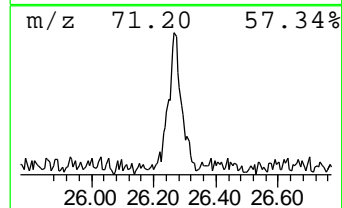
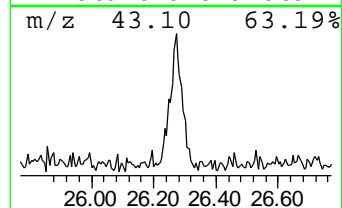
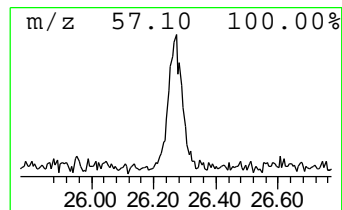
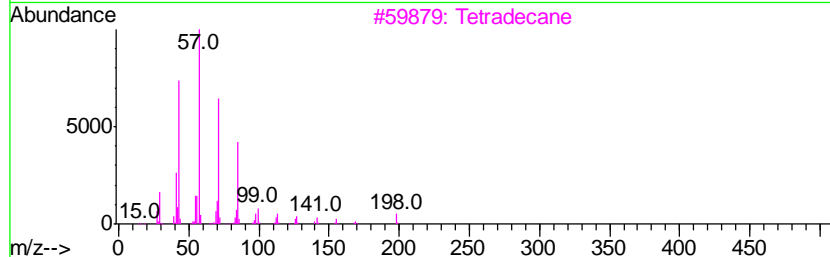
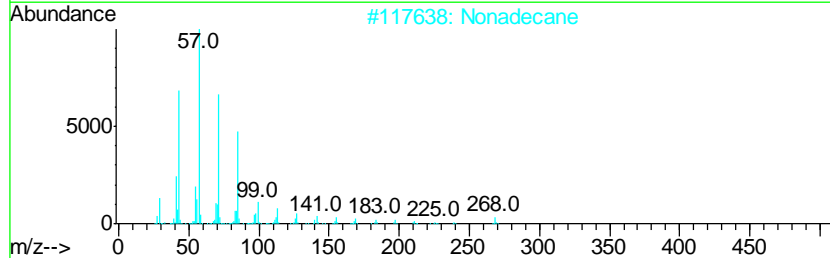
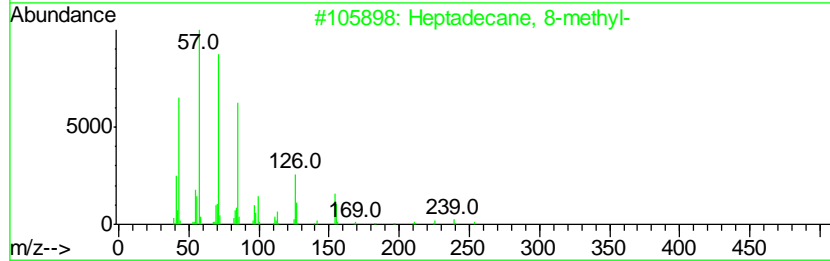
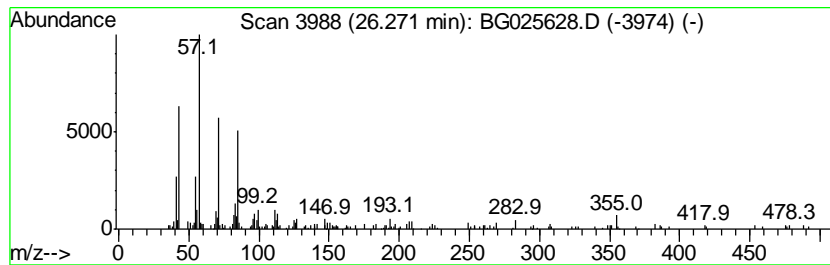
Quant Method : Z:\HPCHEM1\BNA G\METHODS\SOM02.2-EPA-BG011817.M
 Quant Title : SVOA CALIBRATION

TIC Library : C:\DATABASE\NIST11.L
 TIC Integration Parameters: LSCINT.P

 Peak Number 5 (DEL) Alkane: Straight-Chai... Concentration Rank 5

R.T.	EstConc	Area	Relative to ISTD	R.T.
26.27	2.46 ng/ul	253337	Perylene-d12	25.23

Hit#	of	Tentative ID	MW	MolForm	CAS#	Qual
1	5	Heptadecane, 8-methyl-	254	C18H38	013287-23-5	74
2		Nonadecane	268	C19H40	000629-92-5	72
3		Tetradecane	198	C14H30	000629-59-4	72
4		8-Hydroxy-2,2,8-trimethyldeca-5,...	210	C13H22O2	083040-92-0	72
5		Undecane, 2,7-dimethyl-	184	C13H28	017301-24-5	64



Data Path : Z:\HPCHEM1\BNA G\DATA\BG012417\
 Data File : BG025628.D
 Acq On : 25 Jan 2017 4:22
 Operator : UM/SJ
 Sample : I1315-05
 Misc :
 ALS Vial : 28 Sample Multiplier: 1

Instrument :
 BNA_G
 ClientSampled :
 BDN32

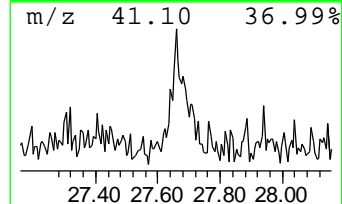
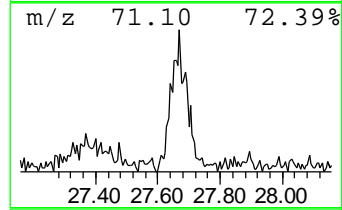
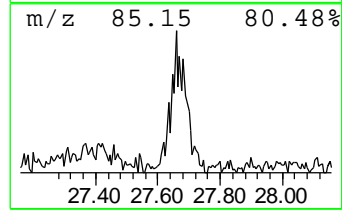
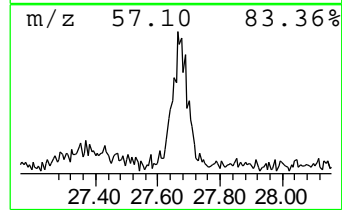
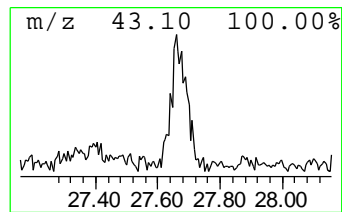
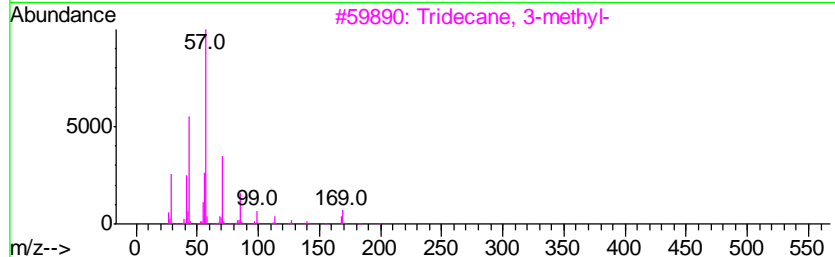
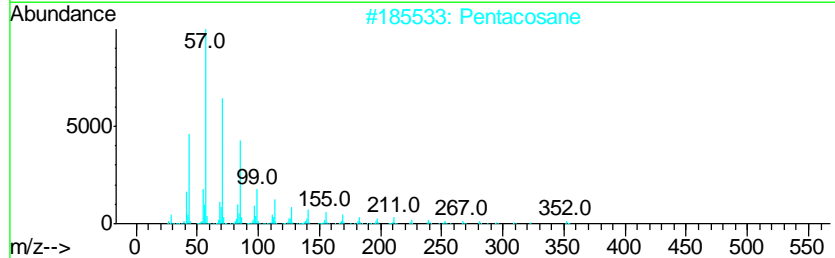
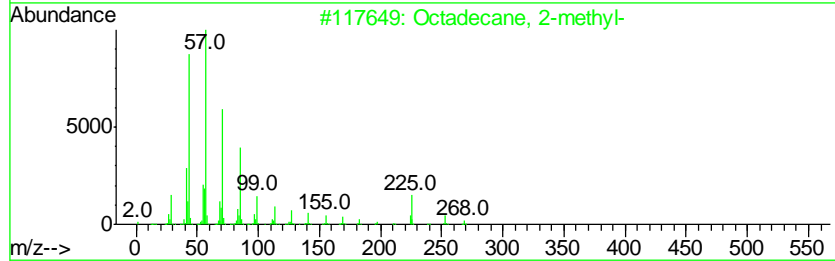
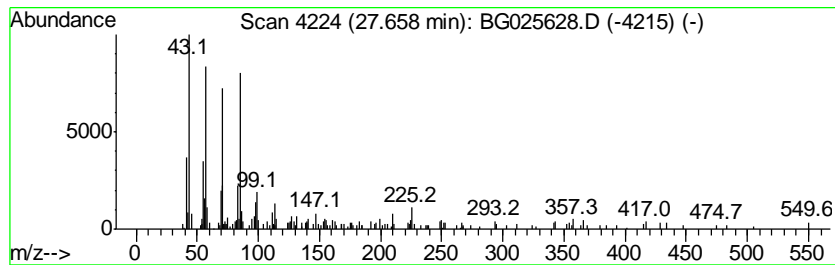
Quant Method : Z:\HPCHEM1\BNA G\METHODS\SOM02.2-EPA-BG011817.M
 Quant Title : SVOA CALIBRATION

TIC Library : C:\DATABASE\NIST11.L
 TIC Integration Parameters: LSCINT.P

 Peak Number 6 (DEL) Alkane: Straight-Chai... Concentration Rank 4

R.T.	EstConc	Area	Relative to ISTD	R.T.
27.66	2.64 ng/ul	271632	Perylene-d12	25.23

Hit#	of	Tentative ID	MW	MolForm	CAS#	Qual
1	5	Octadecane, 2-methyl-	268	C19H40	001560-88-9	80
2		Pentacosane	352	C25H52	000629-99-2	50
3		Tridecane, 3-methyl-	198	C14H30	006418-41-3	49
4		Triacontane	422	C30H62	000638-68-6	49
5		Tetracosane, 11-decyl-	479	C34H70	055429-84-0	49



Data Path : Z:\HPCHEM1\BNA G\DATA\BG012417\
 Data File : BG025628.D
 Acq On : 25 Jan 2017 4:22
 Operator : UM/SJ
 Sample : I1315-05
 Misc :
 ALS Vial : 28 Sample Multiplier: 1

Instrument :
 BNA_G
 ClientSampled :
 BDN32

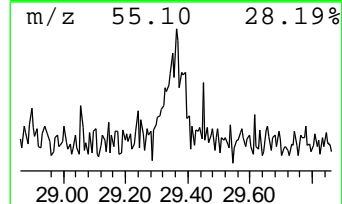
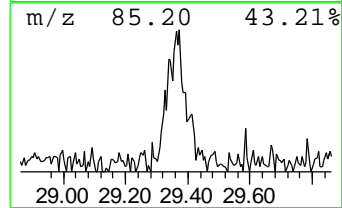
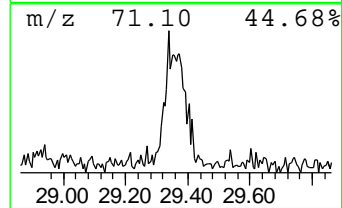
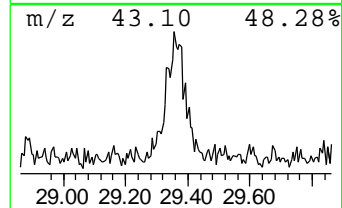
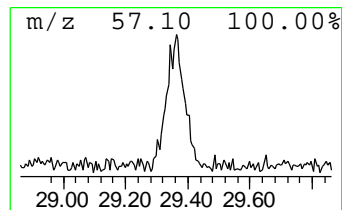
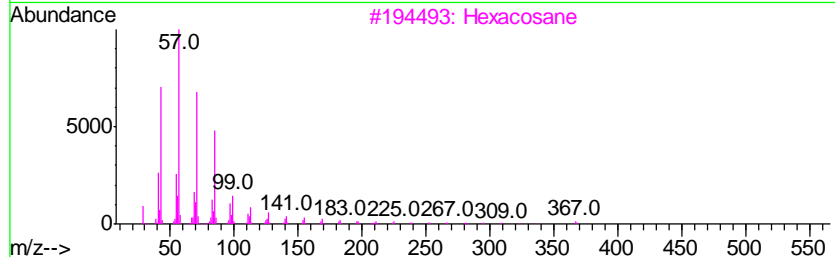
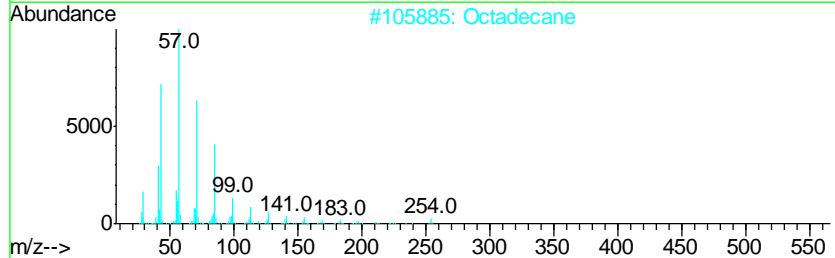
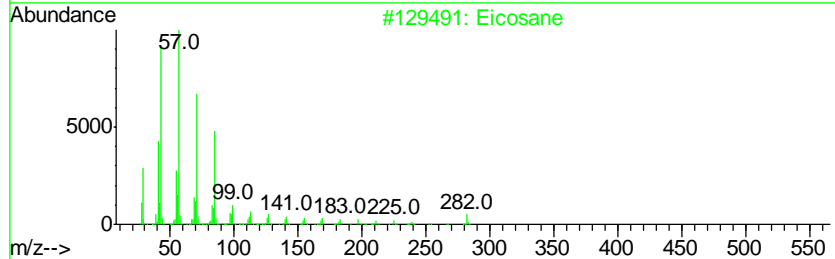
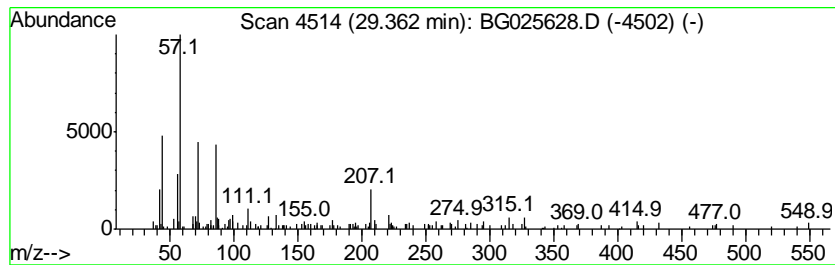
Quant Method : Z:\HPCHEM1\BNA G\METHODS\SOM02.2-EPA-BG011817.M
 Quant Title : SVOA CALIBRATION

TIC Library : C:\DATABASE\NIST11.L
 TIC Integration Parameters: LSCINT.P

 Peak Number 7 (DEL) Alkane: Straight-Chai... Concentration Rank 7

R.T.	EstConc	Area	Relative to ISTD	R.T.
29.36	2.07 ng/ul	212679	Perylene-d12	25.23

Hit#	of	Tentative ID	MW	MolForm	CAS#	Qual
1	5	Eicosane	282	C20H42	000112-95-8	60
2		Octadecane	254	C18H38	000593-45-3	47
3		Hexacosane	366	C26H54	000630-01-3	47
4		Eicosane, 9-octyl-	394	C28H58	013475-77-9	47
5		Hexacosane	366	C26H54	000630-01-3	47



Data Path : Z:\HPCHEM1\BNA_G\DATA\BG012417\
Data File : BG025628.D
Acq On : 25 Jan 2017 4:22
Operator : UM/SJ
Sample : I1315-05
Misc :
ALS Vial : 28 Sample Multiplier: 1

Instrument :
BNA_G
ClientSampleId :
BDN32

Quant Method : Z:\HPCHEM1\BNA_G\METHODS\SOM02.2-EPA-BG011817.M
Quant Title : SVOA CALIBRATION

TIC Library : C:\DATABASE\NIST11.L
TIC Integration Parameters: LSCINT.P

TIC Top Hit name	RT	EstConc	Units	Response	--Internal Standard--			
					#	RT	Resp	Conc
Hexadecanoic acid...	19.79	58.5	ng/ul	6164970	5	21.85	2105860	20.0
Octadecanoic acid...	20.83	49.0	ng/ul	5155830	5	21.85	2105860	20.0
Octadecane, 1-(et...	21.41	2.7	ng/ul	280938	5	21.85	2105860	20.0
trans-2,3-Epoxyde...	25.10	2.2	ng/ul	227493	6	25.23	2055680	20.0
(DEL) Alkane: Str...	26.27	2.5	ng/ul	253337	6	25.23	2055680	20.0
(DEL) Alkane: Str...	27.66	2.6	ng/ul	271632	6	25.23	2055680	20.0
(DEL) Alkane: Str...	29.36	2.1	ng/ul	212679	6	25.23	2055680	20.0