

Data Path : Z:\SVOASRV\HPCHEM1\BNA G\DATA\BG012420\  
 Data File : BG044185.D  
 Acq On : 24 Jan 2020 17:07  
 Operator : CG/JU  
 Sample : L1246-03  
 Misc :  
 ALS Vial : 11 Sample Multiplier: 1

Instrument :  
 BNA\_G  
 ClientSampleId :  
 SP-2

Quant Time: Jan 25 06:25:11 2020  
 Quant Method : Z:\SVOASRV\HPCHEM1\BNA G\METHODS\8270-BG123019.M  
 Quant Title : ASP BNA STANDARDS FOR 5 POINT CALIBRATION  
 QLast Update : Tue Dec 31 13:32:23 2019  
 Response via : Initial Calibration

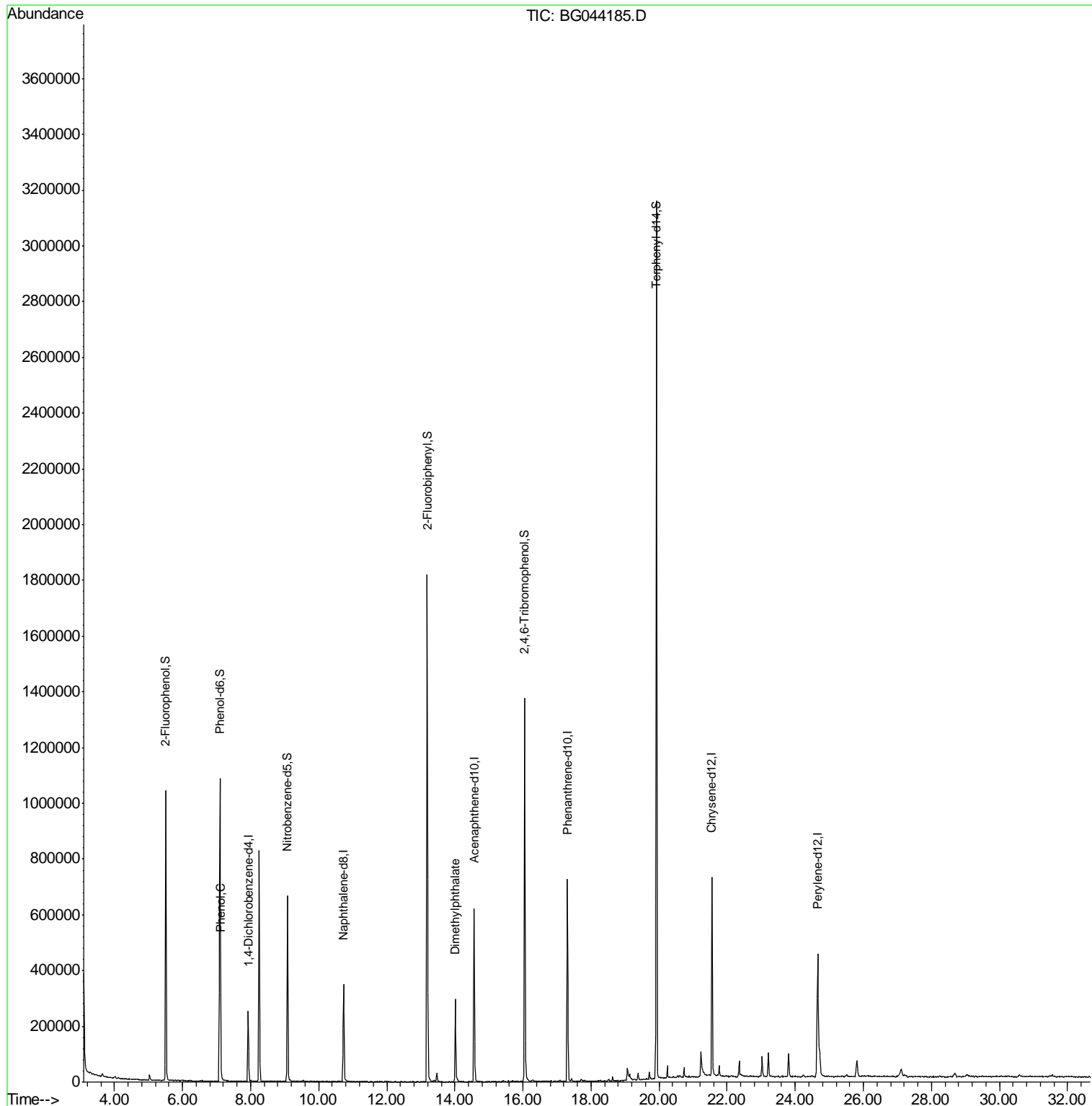
Internal Standards	R.T.	QIon	Response	Conc	Units	Dev(Min)
1) 1,4-Dichlorobenzene-d4	7.93	152	75753	20.00	ng	-0.03
21) Naphthalene-d8	10.73	136	339101	20.00	ng	-0.04
39) Acenaphthene-d10	14.57	164	232182	20.00	ng	-0.03
64) Phenanthrene-d10	17.31	188	492120	20.00	ng	-0.03
76) Chrysene-d12	21.56	240	424810	20.00	ng	-0.03
87) Perylene-d12	24.66	264	476541	20.00	ng	-0.06
System Monitoring Compounds						
5) 2-Fluorophenol	5.51	112	501241	121.49	ng	-0.03
7) Phenol-d6	7.10	99	691838	119.97	ng	-0.03
23) Nitrobenzene-d5	9.08	82	426174	67.23	ng	-0.04
42) 2,4,6-Tribromophenol	16.05	330	272432	112.12	ng	-0.03
45) 2-Fluorobiphenyl	13.19	172	1036905	80.91	ng	-0.03
79) Terphenyl-d14	19.92	244	1480811	83.71	ng	-0.03
Target Compounds						
10) Phenol	7.12	94	33107	5.572	ng	86
50) Dimethylphthalate	14.01	163	235471	14.283	ng	96

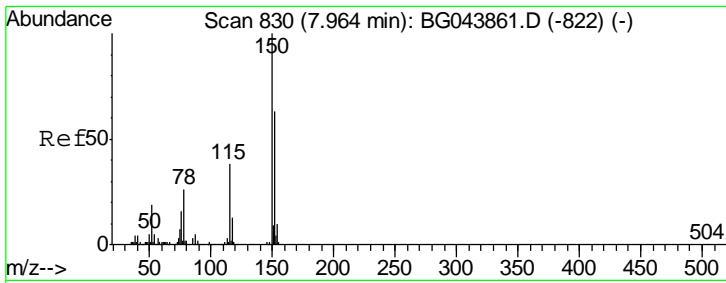
(#) = qualifier out of range (m) = manual integration (+) = signals summed

Data Path : Z:\SVOASRV\HPCHEM1\BNA G\DATA\BG012420\  
 Data File : BG044185.D  
 Acq On : 24 Jan 2020 17:07  
 Operator : CG/JU  
 Sample : L1246-03  
 Misc :  
 ALS Vial : 11 Sample Multiplier: 1

Instrument :  
 BNA\_G  
 ClientSampled :  
 SP-2

Quant Time: Jan 25 06:25:11 2020  
 Quant Method : Z:\SVOASRV\HPCHEM1\BNA G\METHODS\8270-BG123019.M  
 Quant Title : ASP BNA STANDARDS FOR 5 POINT CALIBRATION  
 QLast Update : Tue Dec 31 13:32:23 2019  
 Response via : Initial Calibration

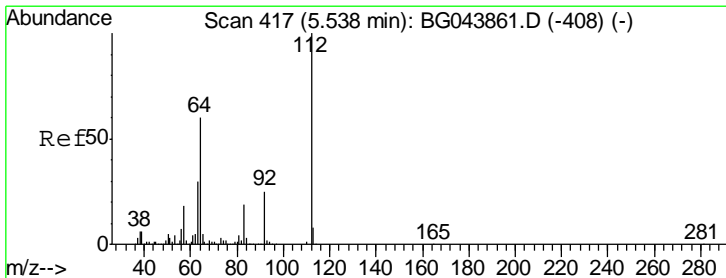
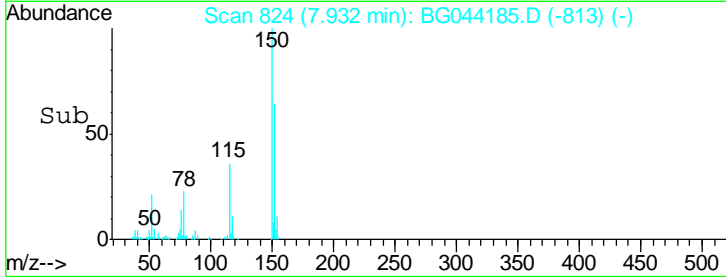
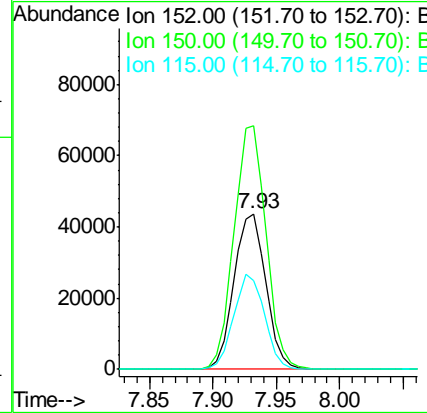
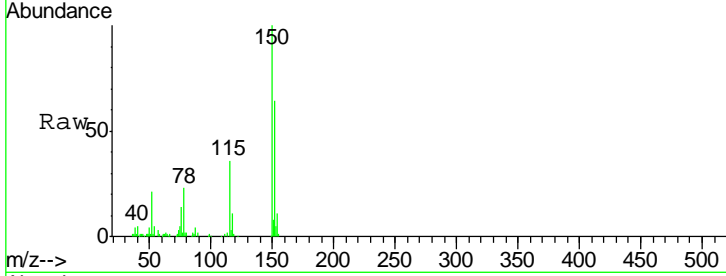




#1  
 1,4-Dichlorobenzene-d4  
 Concen: 20.000 ng  
 RT: 7.93 min Scan# 824  
 Delta R.T. -0.03 min  
 Lab File: BG044185.D  
 Acq: 24 Jan 2020 17:07

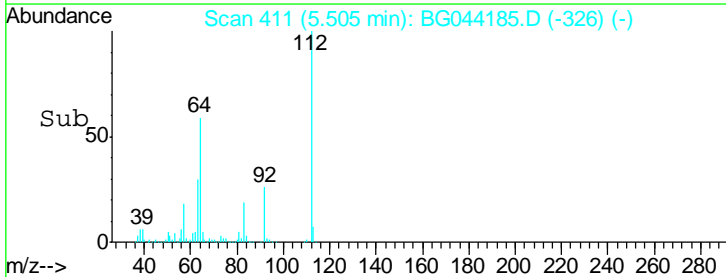
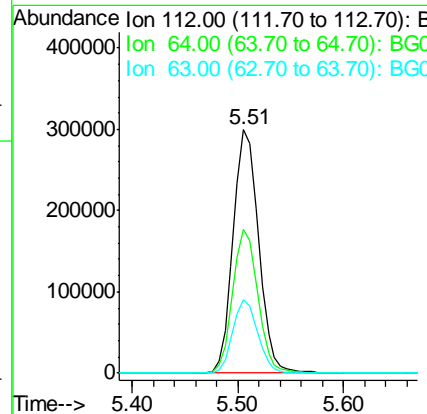
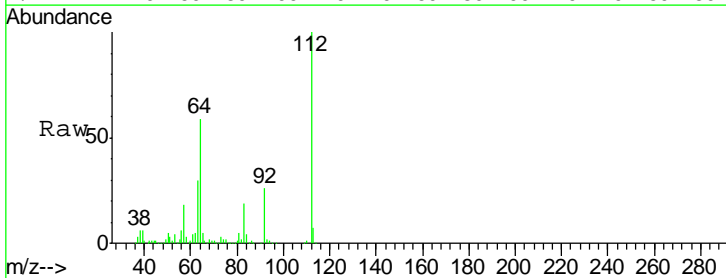
Instrument :  
 BNA\_G  
 ClientSampled :  
 SP-2

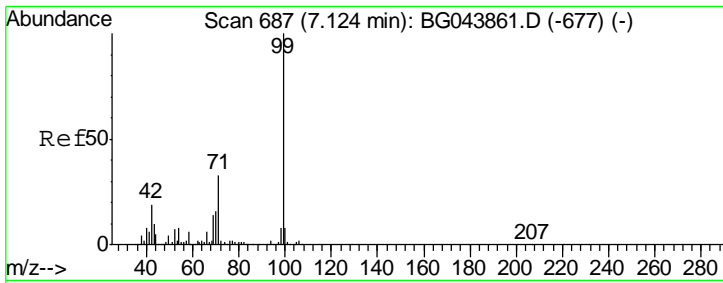
Tgt Ion	Resp	Lower	Upper
152	75753		
150	156.7	127.0	190.4
115	57.0	47.8	71.8



#5  
 2-Fluorophenol  
 Concen: 121.492 ng  
 RT: 5.51 min Scan# 411  
 Delta R.T. -0.03 min  
 Lab File: BG044185.D  
 Acq: 24 Jan 2020 17:07

Tgt Ion	Resp	Lower	Upper
112	501241		
64	59.2	47.8	71.6
63	30.4	24.3	36.5

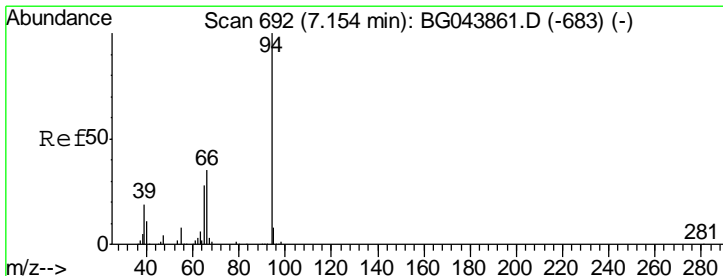
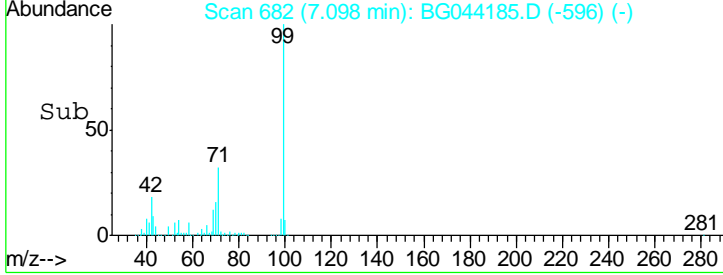
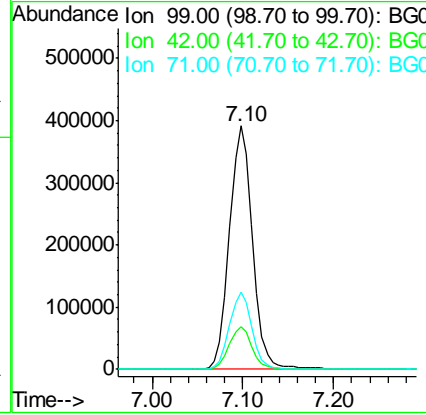
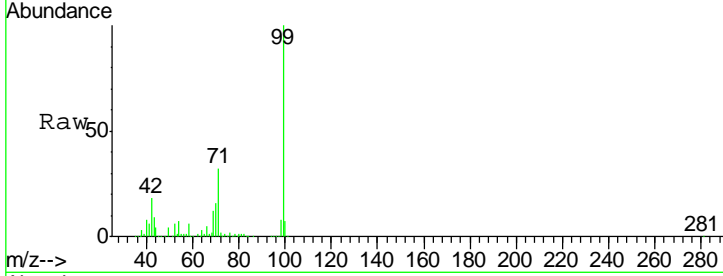




#7  
 Phenol-d6  
 Concen: 119.965 ng  
 RT: 7.10 min Scan# 682  
 Delta R.T. -0.03 min  
 Lab File: BG044185.D  
 Acq: 24 Jan 2020 17:07

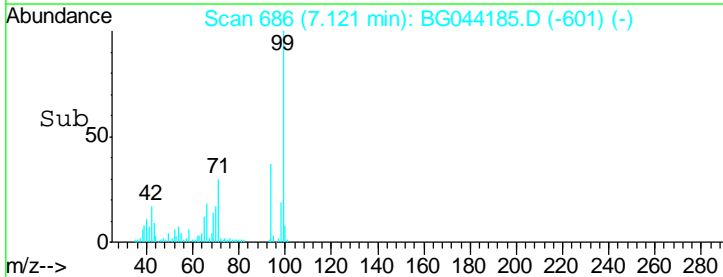
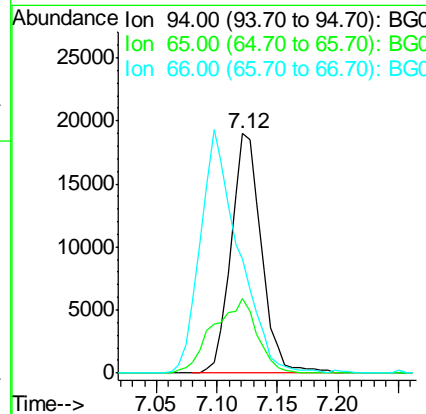
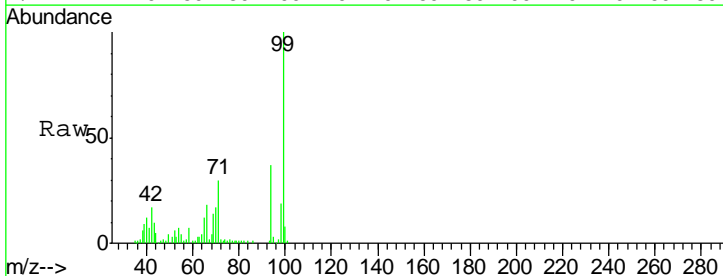
Instrument :  
 BNA\_G  
 ClientSampled :  
 SP-2

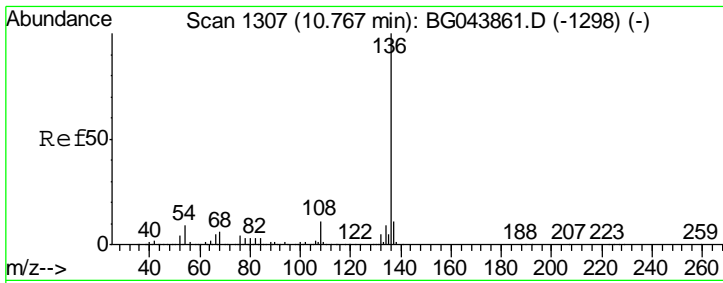
Tgt Ion	Resp	Lower	Upper
99	691838		
42	17.8	14.9	22.3
71	31.7	26.4	39.6



#10  
 Phenol  
 Concen: 5.572 ng  
 RT: 7.12 min Scan# 686  
 Delta R.T. -0.03 min  
 Lab File: BG044185.D  
 Acq: 24 Jan 2020 17:07

Tgt Ion	Resp	Lower	Upper
94	33107		
65	31.2	8.1	48.1
66	47.8	15.6	55.6



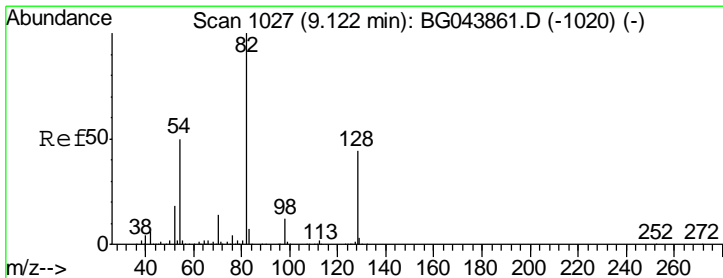
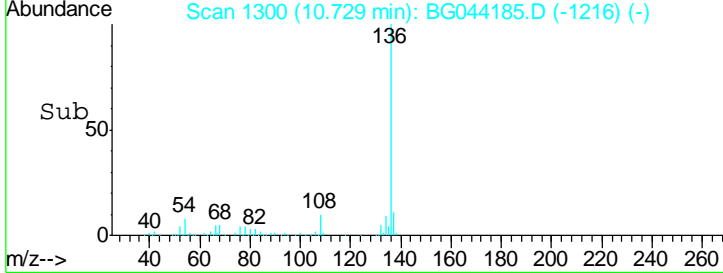
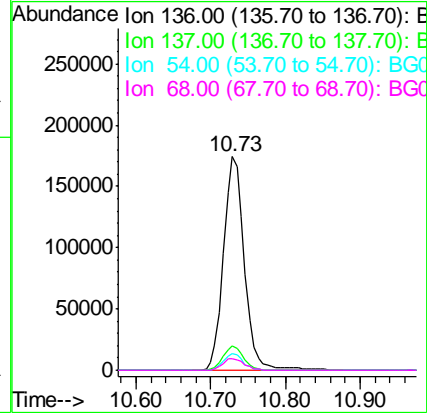
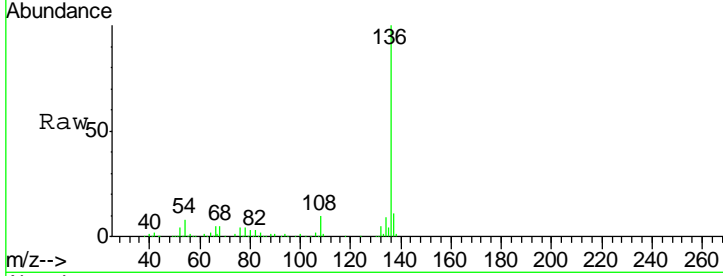


#21  
 Naphthalene-d8  
 Concen: 20.000 ng  
 RT: 10.73 min Scan# 1300  
 Delta R.T. -0.04 min  
 Lab File: BG044185.D  
 Acq: 24 Jan 2020 17:07

Instrument :  
 BNA\_G  
 ClientSampled :  
 SP-2

Tgt Ion: 136 Resp: 339101

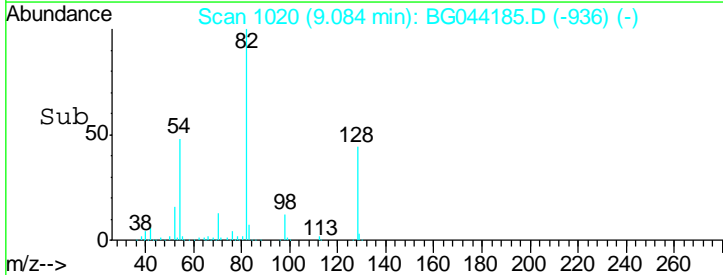
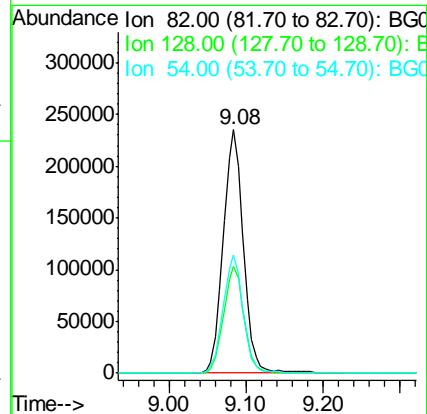
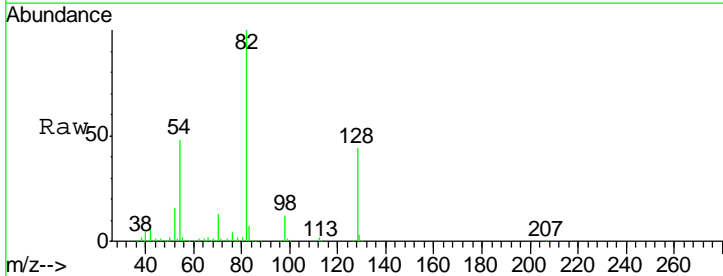
Ion	Ratio	Lower	Upper
136	100		
137	11.3	8.8	13.2
54	7.6	7.0	10.4
68	5.3	4.9	7.3

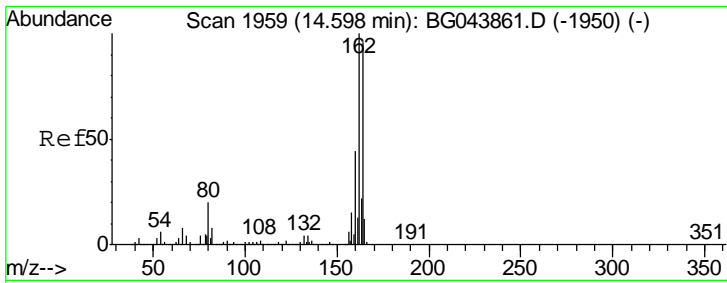


#23  
 Nitrobenzene-d5  
 Concen: 67.232 ng  
 RT: 9.08 min Scan# 1020  
 Delta R.T. -0.04 min  
 Lab File: BG044185.D  
 Acq: 24 Jan 2020 17:07

Tgt Ion: 82 Resp: 426174

Ion	Ratio	Lower	Upper
82	100		
128	43.9	35.1	52.7
54	48.3	40.1	60.1

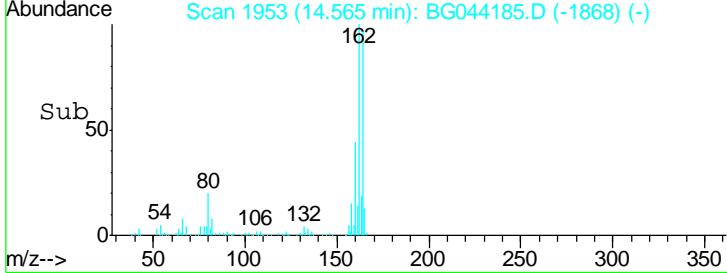
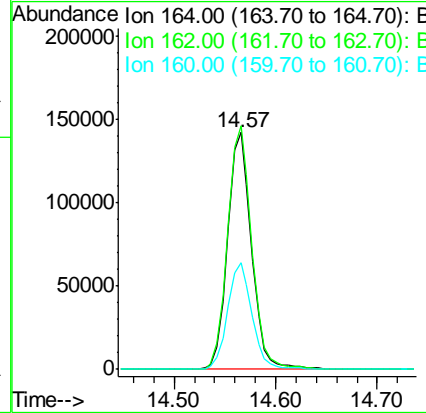
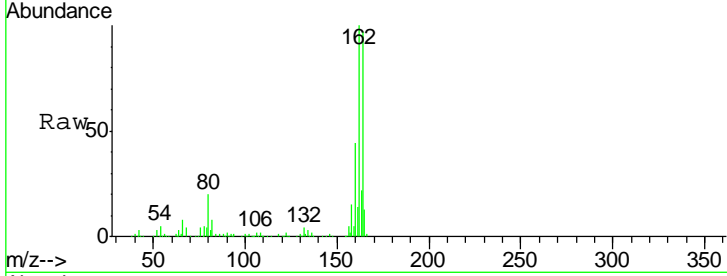




#39  
 Acenaphthene-d10  
 Concen: 20.000 ng  
 RT: 14.57 min Scan# 1953  
 Delta R.T. -0.03 min  
 Lab File: BG044185.D  
 Acq: 24 Jan 2020 17:07

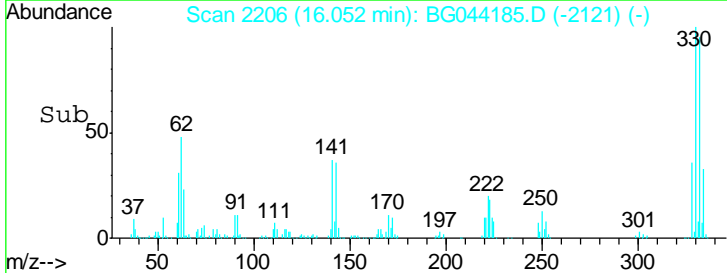
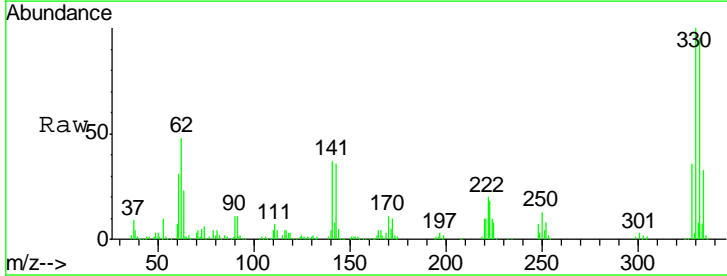
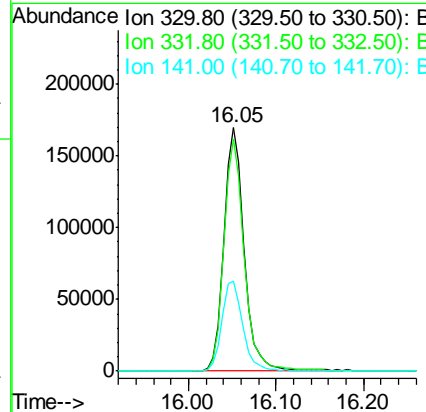
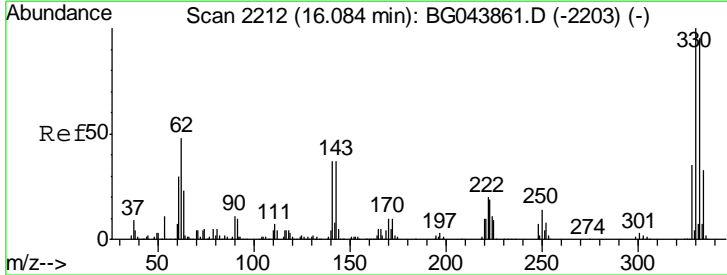
Instrument :  
 BNA\_G  
 ClientSampled :  
 SP-2

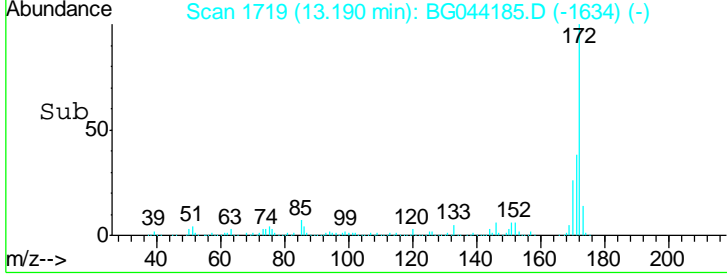
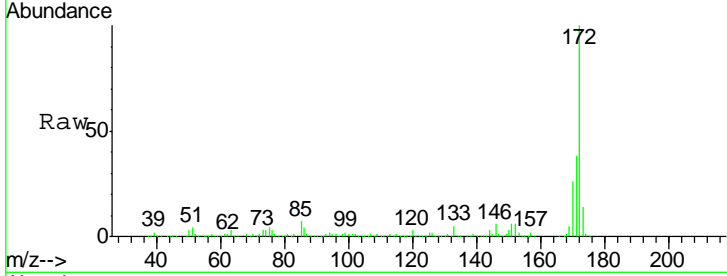
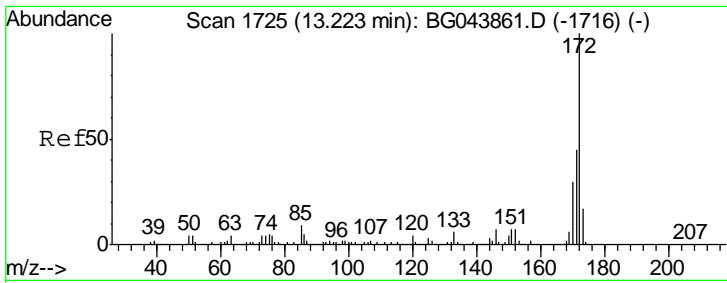
Tgt Ion	Resp	Lower	Upper
164	100		
162	102.8	83.0	124.4
160	44.9	36.1	54.1



#42  
 2,4,6-Tribromophenol  
 Concen: 112.124 ng  
 RT: 16.05 min Scan# 2206  
 Delta R.T. -0.03 min  
 Lab File: BG044185.D  
 Acq: 24 Jan 2020 17:07

Tgt Ion	Resp	Lower	Upper
330	100		
332	96.1	77.2	115.8
141	38.5	33.1	49.7



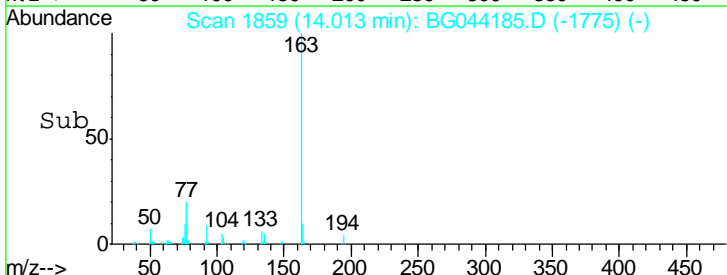
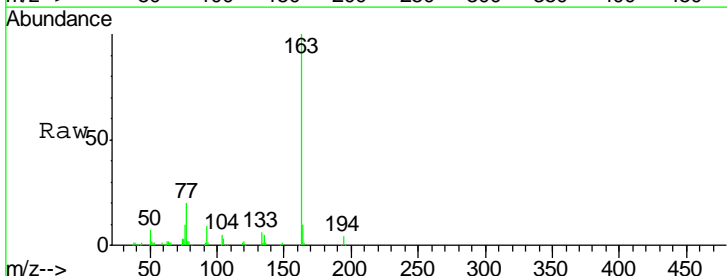
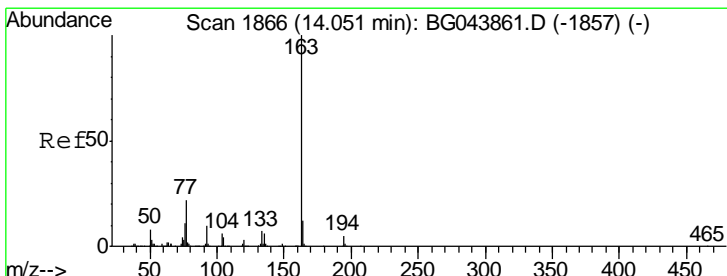
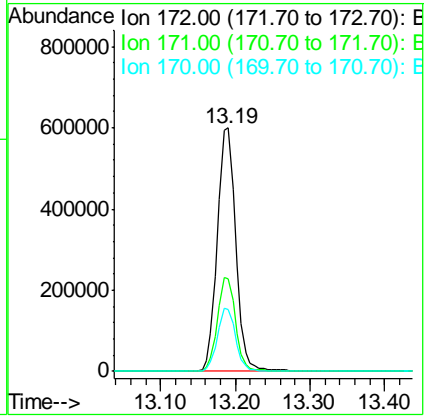


#45  
 2-Fluorobiphenyl  
 Concen: 80.912 ng  
 RT: 13.19 min Scan# 1719  
 Delta R.T. -0.03 min  
 Lab File: BG044185.D  
 Acq: 24 Jan 2020 17:07

Instrument :  
 BNA\_G  
 ClientSampled :  
 SP-2

Tgt Ion: 172 Resp: 1036905

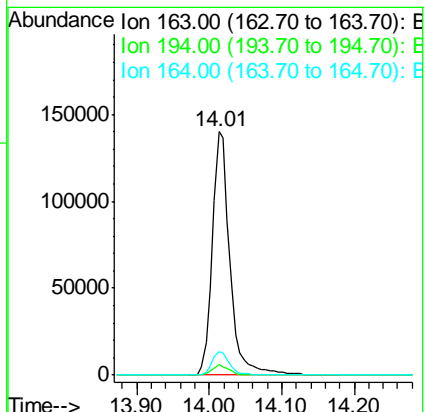
Ion	Ratio	Lower	Upper
172	100		
171	38.2	35.8	53.8
170	25.7	24.2	36.4

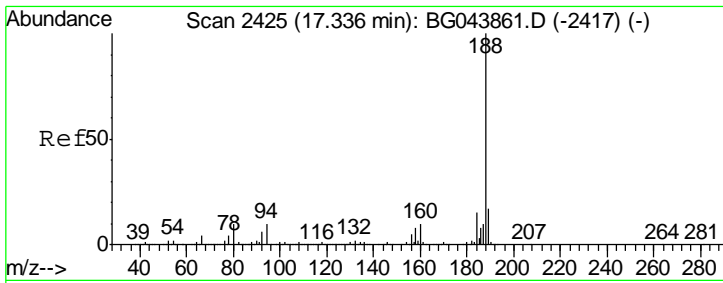


#50  
 Dimethylphthalate  
 Concen: 14.283 ng  
 RT: 14.01 min Scan# 1859  
 Delta R.T. -0.04 min  
 Lab File: BG044185.D  
 Acq: 24 Jan 2020 17:07

Tgt Ion: 163 Resp: 235471

Ion	Ratio	Lower	Upper
163	100		
194	4.2	3.7	5.5
164	9.6	9.3	13.9

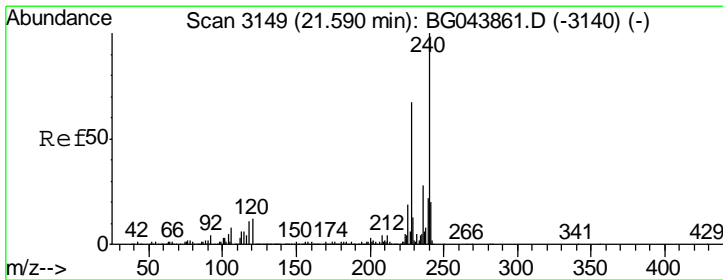
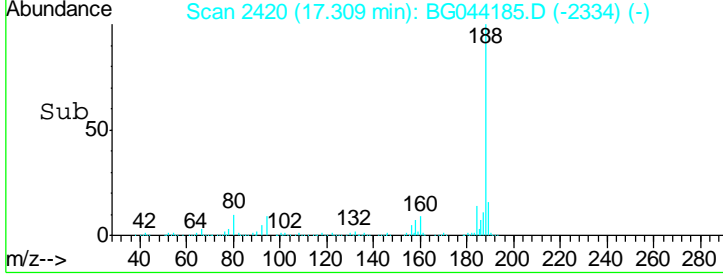
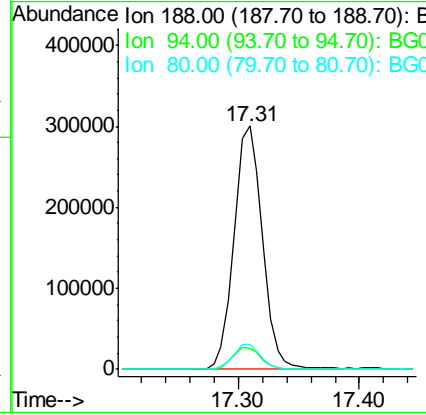
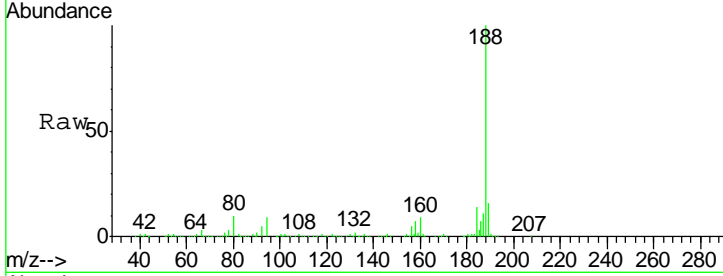




#64  
 Phenanthrene-d10  
 Concen: 20.000 ng  
 RT: 17.31 min Scan# 2420  
 Delta R.T. -0.03 min  
 Lab File: BG044185.D  
 Acq: 24 Jan 2020 17:07

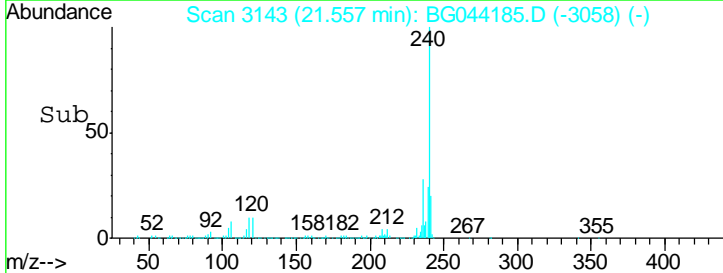
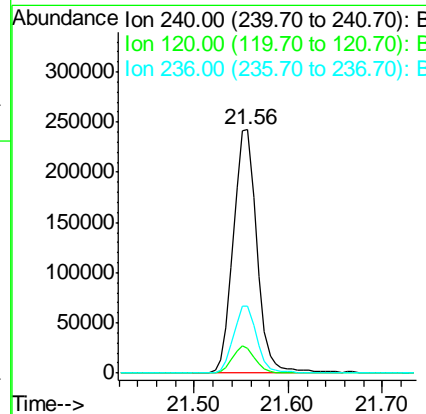
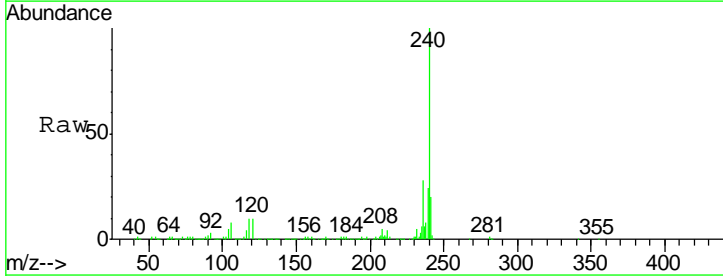
Instrument :  
 BNA\_G  
 ClientSampled :  
 SP-2

Tgt Ion	Resp	Lower	Upper
188	492120		
94	8.5	7.9	11.9
80	9.9	8.2	12.4

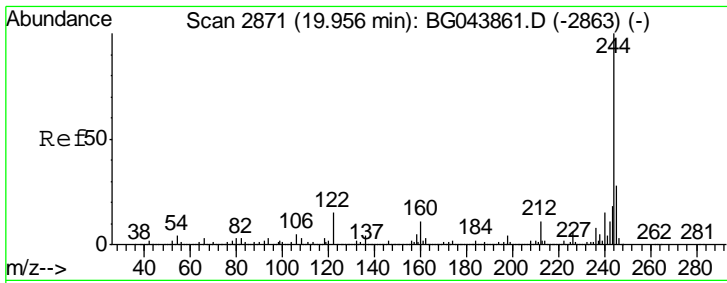


#76  
 Chrysene-d12  
 Concen: 20.000 ng  
 RT: 21.56 min Scan# 3143  
 Delta R.T. -0.03 min  
 Lab File: BG044185.D  
 Acq: 24 Jan 2020 17:07

Tgt Ion	Resp	Lower	Upper
240	424810		
120	10.1	9.6	14.4
236	27.6	22.2	33.2





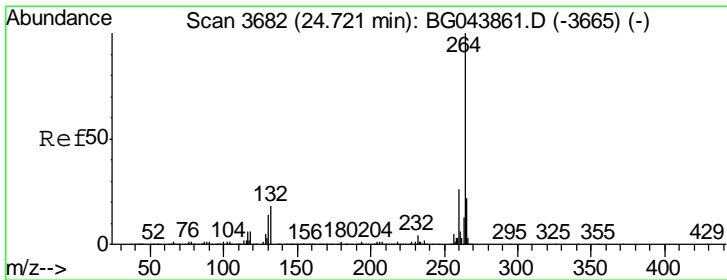
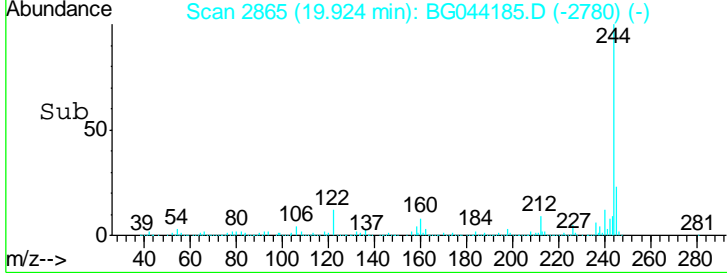
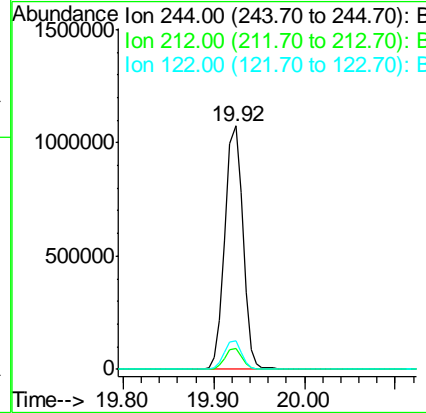
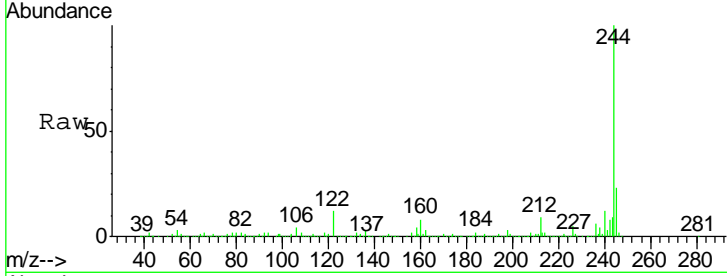


#79  
 Terphenyl-d14  
 Concen: 83.706 ng  
 RT: 19.92 min Scan# 2865  
 Delta R.T. -0.03 min  
 Lab File: BG044185.D  
 Acq: 24 Jan 2020 17:07

Instrument :  
 BNA\_G  
 ClientSampled :  
 SP-2

Tgt Ion: 244 Resp: 1480811

Ion	Ratio	Lower	Upper
244	100		
212	8.7	8.6	13.0
122	11.7	11.9	17.9#



#87  
 Perylene-d12  
 Concen: 20.000 ng  
 RT: 24.66 min Scan# 3671  
 Delta R.T. -0.06 min  
 Lab File: BG044185.D  
 Acq: 24 Jan 2020 17:07

Tgt Ion: 264 Resp: 476541

Ion	Ratio	Lower	Upper
264	100		
260	24.5	20.4	30.6
265	22.0	17.4	26.2

