

Data Path : Z:\SVOASRV\HPCHEM1\BNA G\DATA\BG012420\
 Data File : BG044189.D
 Acq On : 24 Jan 2020 19:44
 Operator : CG/JU
 Sample : L1247-05
 Misc :
 ALS Vial : 15 Sample Multiplier: 1

Instrument :
 BNA_G
 ClientSampleId :
 TP-4-5-COMP

Quant Time: Jan 27 04:45:42 2020
 Quant Method : Z:\SVOASRV\HPCHEM1\BNA G\METHODS\8270-BG123019.M
 Quant Title : ASP BNA STANDARDS FOR 5 POINT CALIBRATION
 QLast Update : Tue Dec 31 13:32:23 2019
 Response via : Initial Calibration

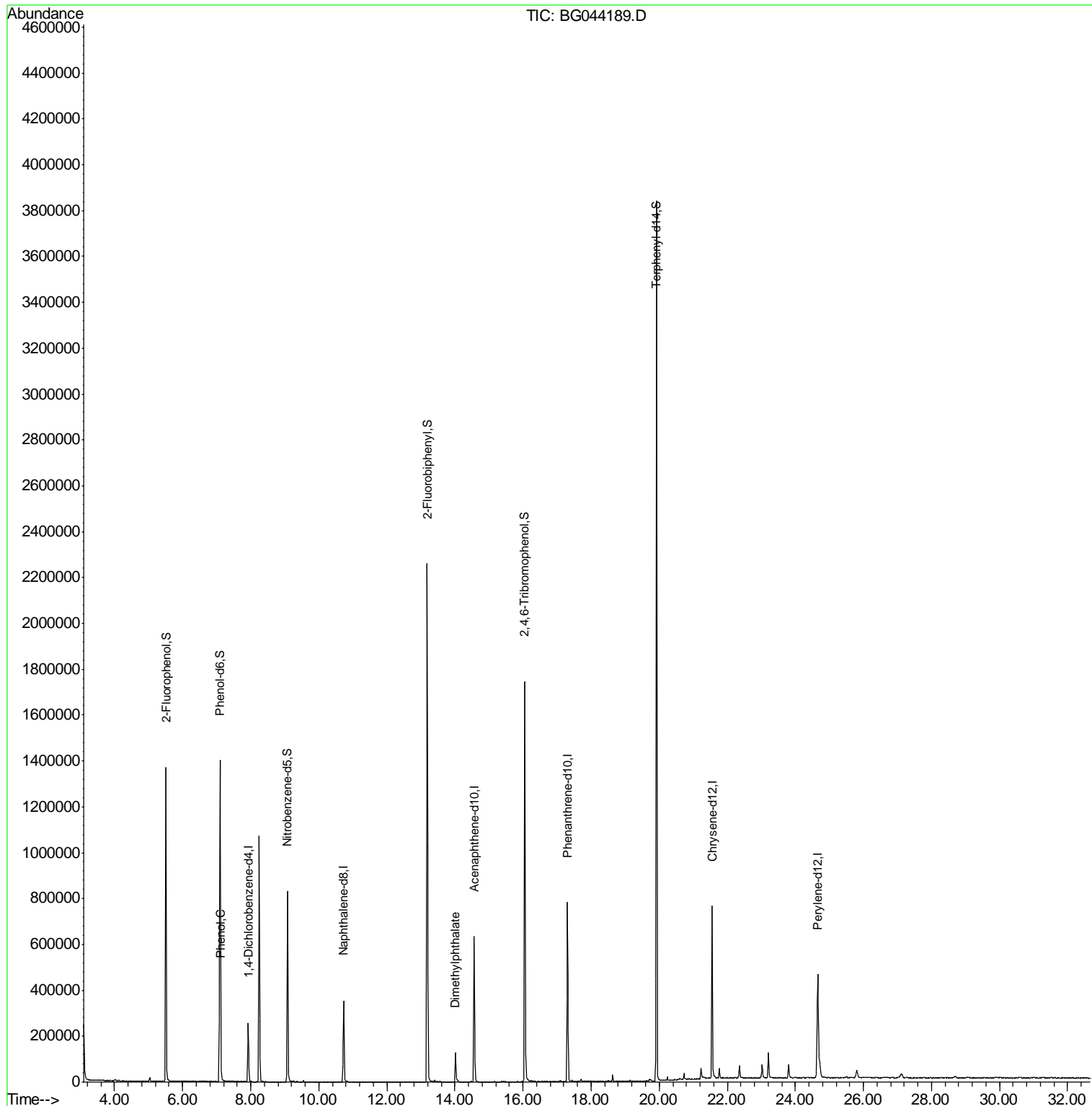
Internal Standards	R.T.	QIon	Response	Conc	Units	Dev(Min)
1) 1,4-Dichlorobenzene-d4	7.93	152	77274	20.00	ng	-0.03
21) Naphthalene-d8	10.73	136	342665	20.00	ng	-0.03
39) Acenaphthene-d10	14.56	164	238375	20.00	ng	-0.03
64) Phenanthrene-d10	17.31	188	512049	20.00	ng	-0.03
76) Chrysene-d12	21.55	240	440751	20.00	ng	-0.03
87) Perylene-d12	24.66	264	490349	20.00	ng	-0.06
System Monitoring Compounds						
5) 2-Fluorophenol	5.51	112	660790	157.01	ng	-0.03
7) Phenol-d6	7.10	99	900380	153.05	ng	-0.02
23) Nitrobenzene-d5	9.08	82	542513	84.70	ng	-0.04
42) 2,4,6-Tribromophenol	16.06	330	344870	138.25	ng	-0.03
45) 2-Fluorobiphenyl	13.19	172	1211260	92.06	ng	-0.03
79) Terphenyl-d14	19.92	244	1718941	97.71	ng	-0.03
Target Compounds						
10) Phenol	7.12	94	25916	4.276	ng	87
50) Dimethylphthalate	14.02	163	110014	6.500	ng	96

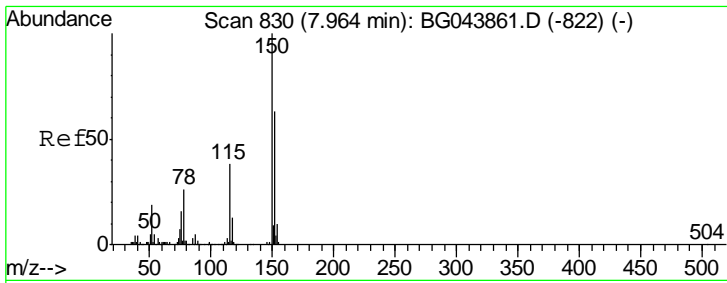
(#) = qualifier out of range (m) = manual integration (+) = signals summed

Data Path : Z:\SVOASRV\HPCHEM1\BNA G\DATA\BG012420\
 Data File : BG044189.D
 Acq On : 24 Jan 2020 19:44
 Operator : CG/JU
 Sample : L1247-05
 Misc :
 ALS Vial : 15 Sample Multiplier: 1

Instrument :
 BNA_G
 ClientSampleId :
 TP-4-5-COMP

Quant Time: Jan 27 04:45:42 2020
 Quant Method : Z:\SVOASRV\HPCHEM1\BNA G\METHODS\8270-BG123019.M
 Quant Title : ASP BNA STANDARDS FOR 5 POINT CALIBRATION
 QLast Update : Tue Dec 31 13:32:23 2019
 Response via : Initial Calibration

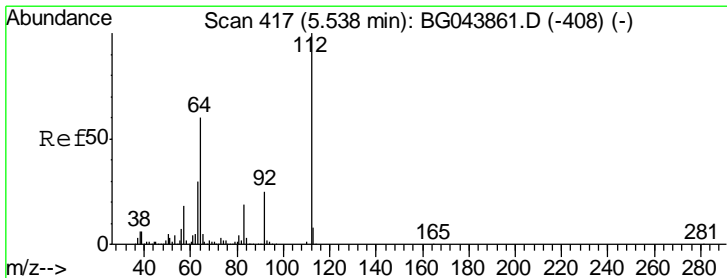
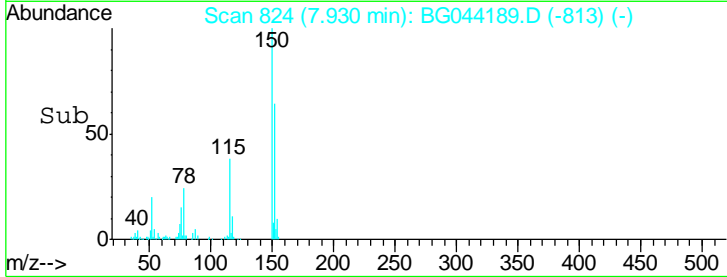
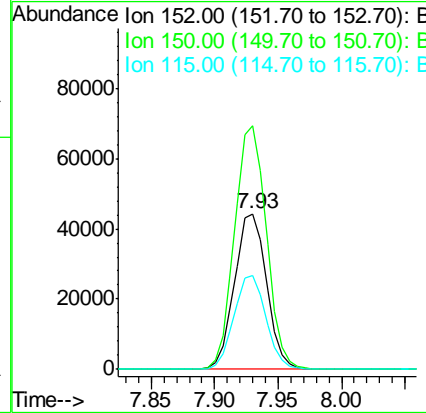
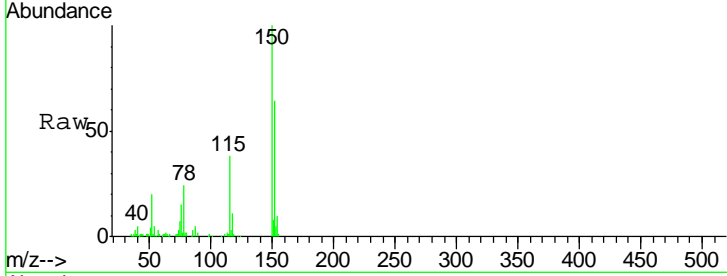




#1
 1,4-Dichlorobenzene-d4
 Concen: 20.000 ng
 RT: 7.93 min Scan# 824
 Delta R.T. -0.03 min
 Lab File: BG044189.D
 Acq: 24 Jan 2020 19:44

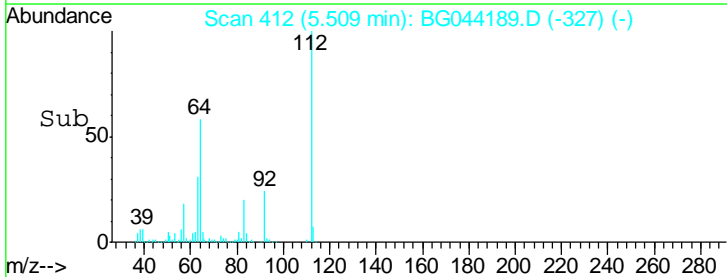
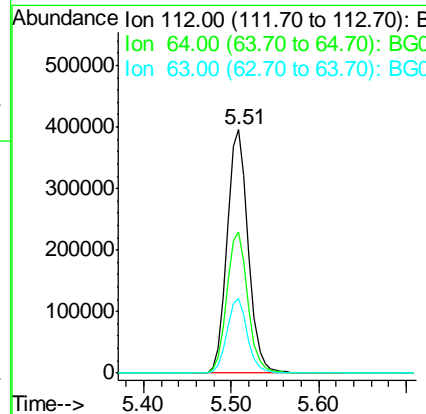
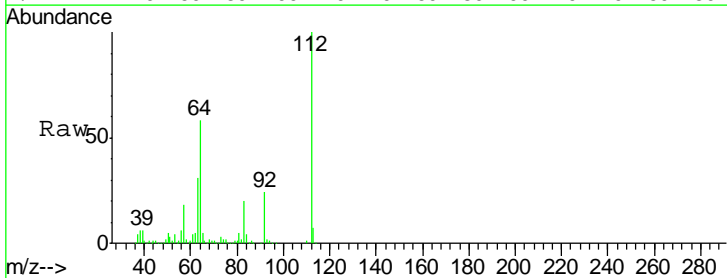
Instrument :
 BNA_G
 ClientSampled :
 TP-4-5-COMP

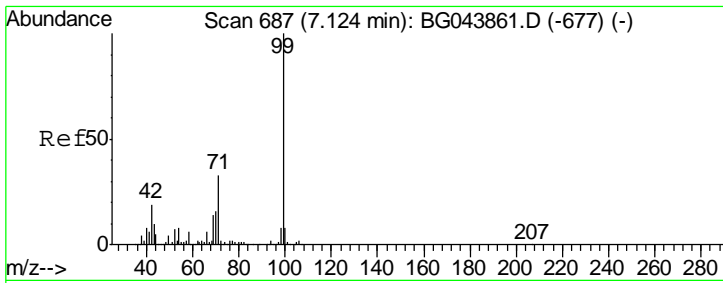
Tgt Ion	Resp	Lower	Upper
152	77274		
152	100		
150	156.6	127.0	190.4
115	60.0	47.8	71.8



#5
 2-Fluorophenol
 Concen: 157.011 ng
 RT: 5.51 min Scan# 412
 Delta R.T. -0.03 min
 Lab File: BG044189.D
 Acq: 24 Jan 2020 19:44

Tgt Ion	Resp	Lower	Upper
112	660790		
112	100		
64	58.0	47.8	71.6
63	30.8	24.3	36.5

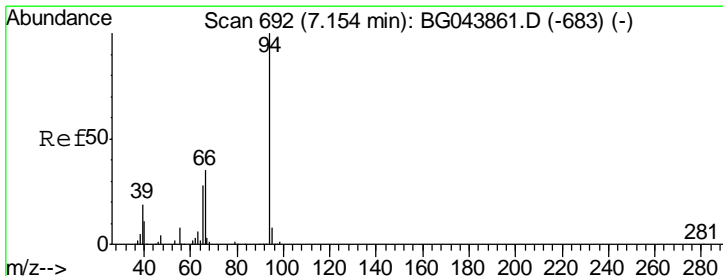
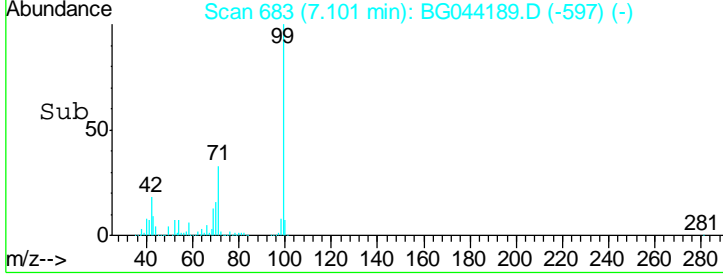
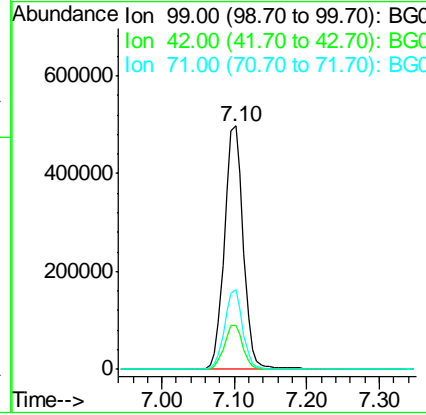
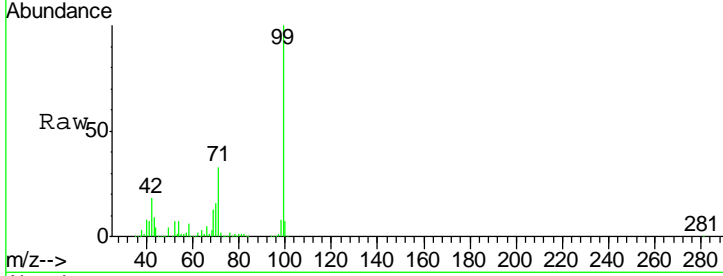




#7
 Phenol-d6
 Concen: 153.053 ng
 RT: 7.10 min Scan# 683
 Delta R.T. -0.02 min
 Lab File: BG044189.D
 Acq: 24 Jan 2020 19:44

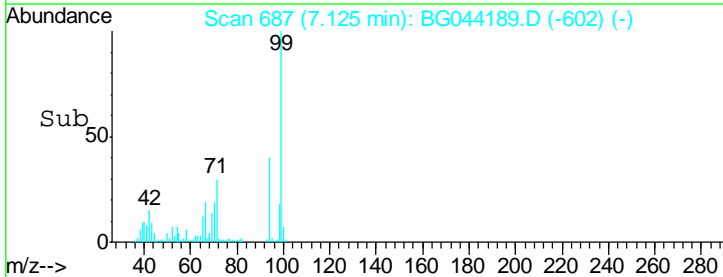
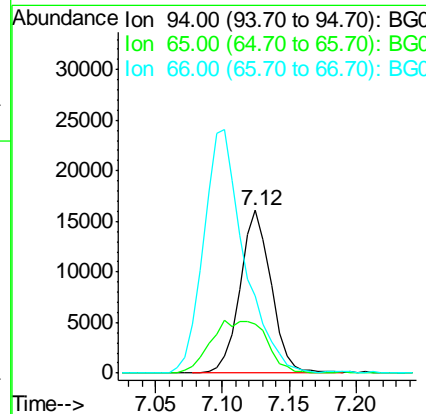
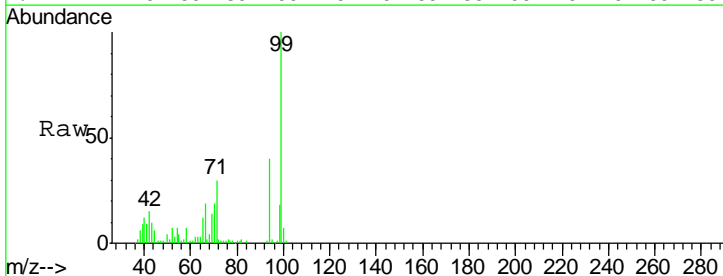
Instrument :
 BNA_G
 ClientSampled :
 TP-4-5-COMP

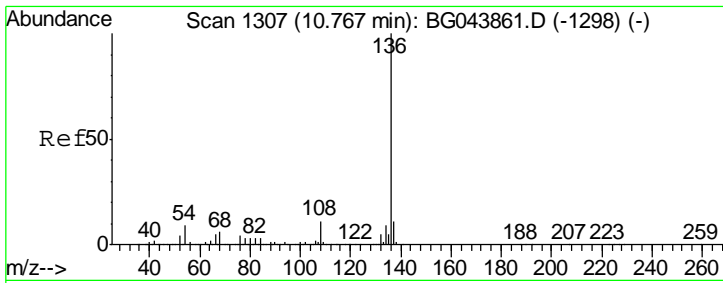
Tgt Ion	Resp	Lower	Upper
99	100		
42	18.2	14.9	22.3
71	32.7	26.4	39.6



#10
 Phenol
 Concen: 4.276 ng
 RT: 7.12 min Scan# 687
 Delta R.T. -0.03 min
 Lab File: BG044189.D
 Acq: 24 Jan 2020 19:44

Tgt Ion	Resp	Lower	Upper
94	100		
65	29.8	8.1	48.1
66	47.5	15.6	55.6

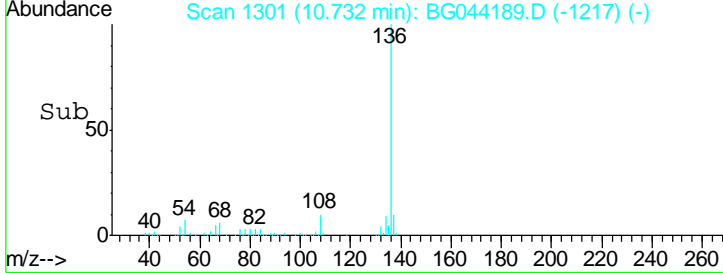
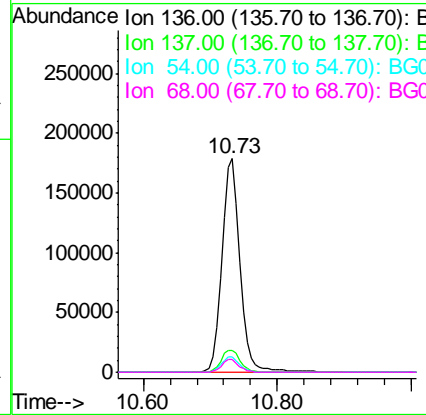
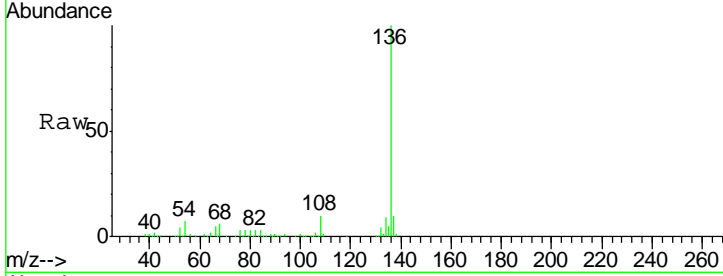




#21
 Naphthalene-d8
 Concen: 20.000 ng
 RT: 10.73 min Scan# 1301
 Delta R.T. -0.03 min
 Lab File: BG044189.D
 Acq: 24 Jan 2020 19:44

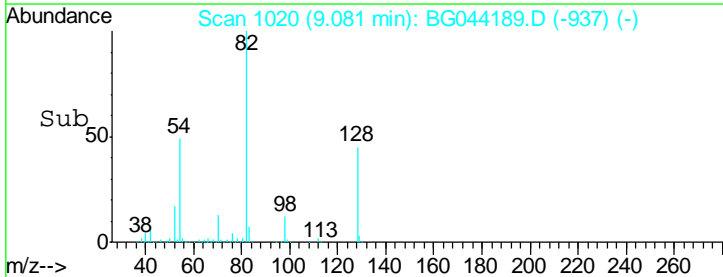
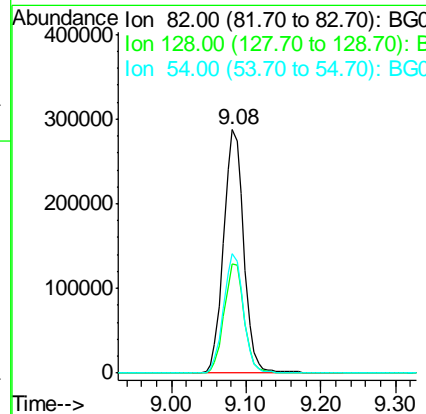
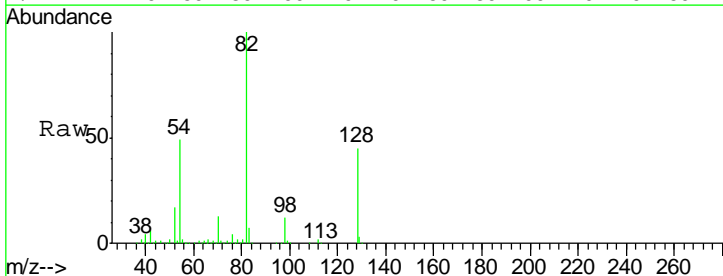
Instrument :
 BNA_G
 ClientSampled :
 TP-4-5-COMP

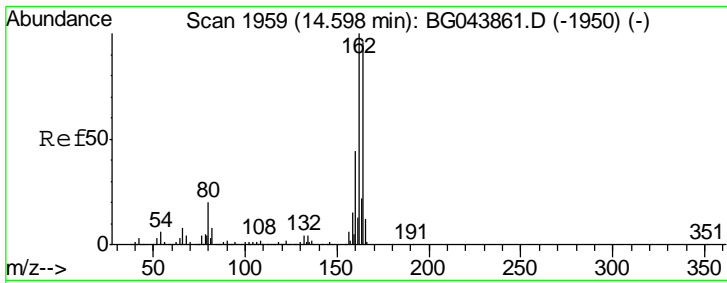
Tgt Ion	Resp	Lower	Upper
136	342665		
137	10.2	8.8	13.2
54	7.0	7.0	10.4
68	6.1	4.9	7.3



#23
 Nitrobenzene-d5
 Concen: 84.696 ng
 RT: 9.08 min Scan# 1020
 Delta R.T. -0.04 min
 Lab File: BG044189.D
 Acq: 24 Jan 2020 19:44

Tgt Ion	Resp	Lower	Upper
82	542513		
128	44.8	35.1	52.7
54	49.1	40.1	60.1

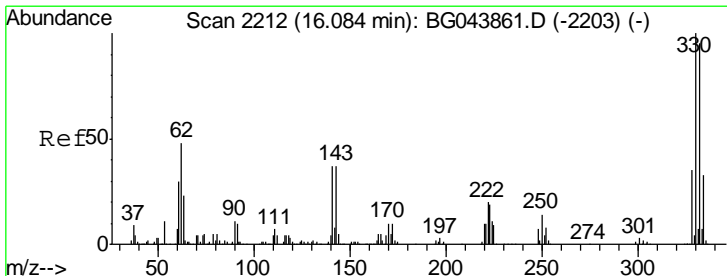
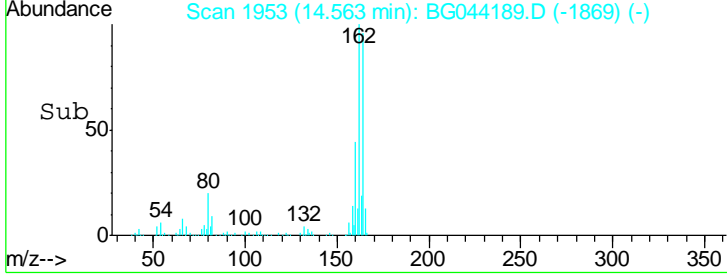
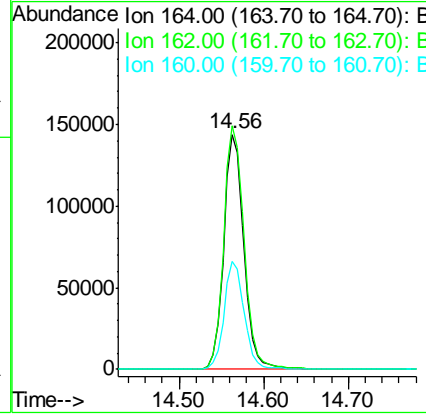
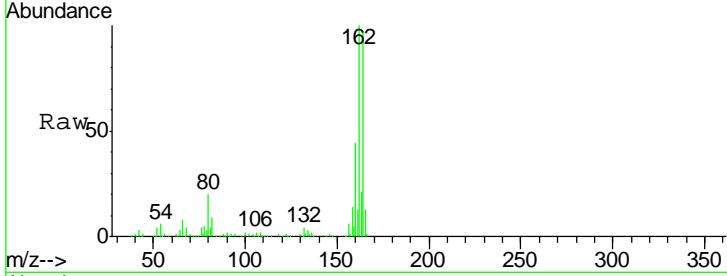




#39
 Acenaphthene-d10
 Concen: 20.000 ng
 RT: 14.56 min Scan# 1953
 Delta R.T. -0.03 min
 Lab File: BG044189.D
 Acq: 24 Jan 2020 19:44

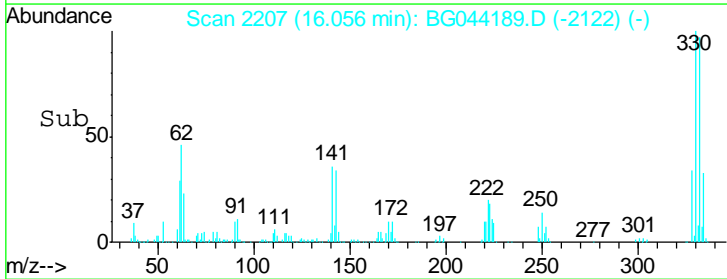
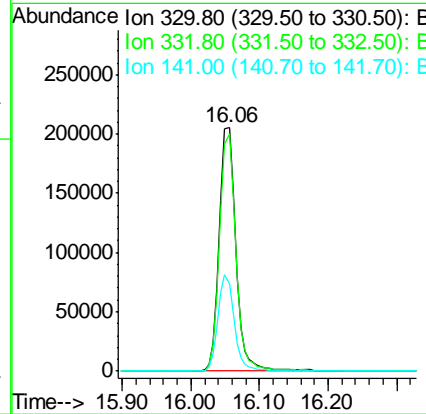
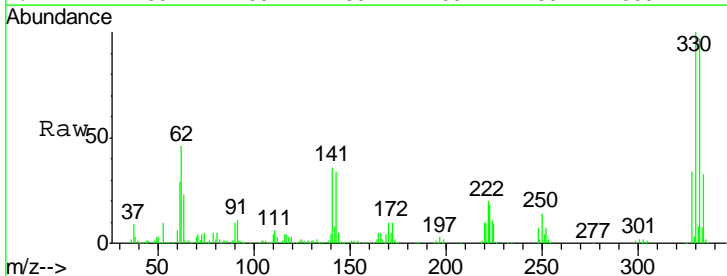
Instrument :
 BNA_G
 ClientSampleId :
 TP-4-5-COMP

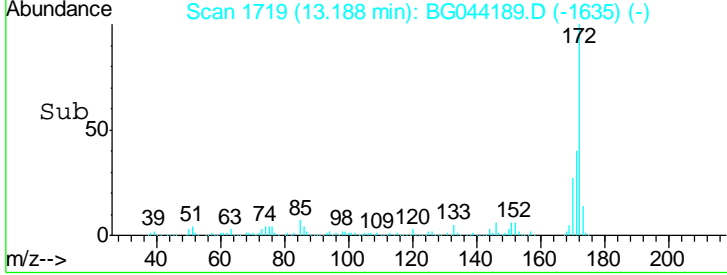
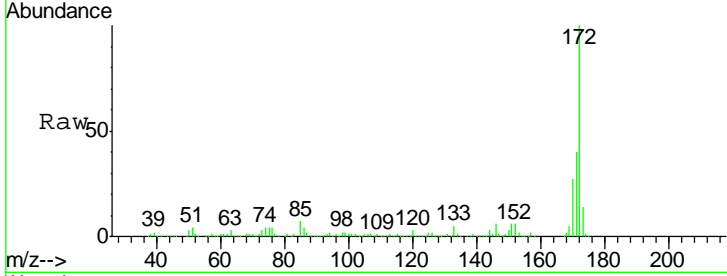
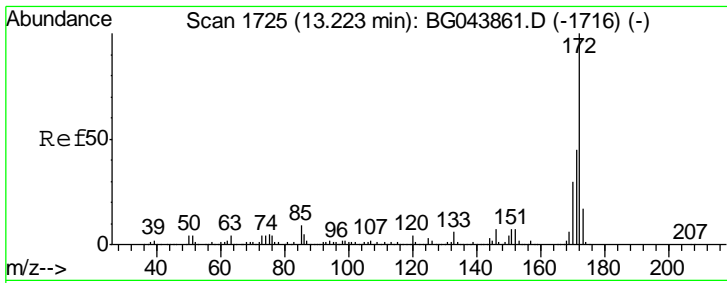
Tgt Ion	Resp	Lower	Upper
164	100		
162	103.5	83.0	124.4
160	45.9	36.1	54.1



#42
 2,4,6-Tribromophenol
 Concen: 138.250 ng
 RT: 16.06 min Scan# 2207
 Delta R.T. -0.03 min
 Lab File: BG044189.D
 Acq: 24 Jan 2020 19:44

Tgt Ion	Resp	Lower	Upper
330	100		
332	95.7	77.2	115.8
141	38.6	33.1	49.7



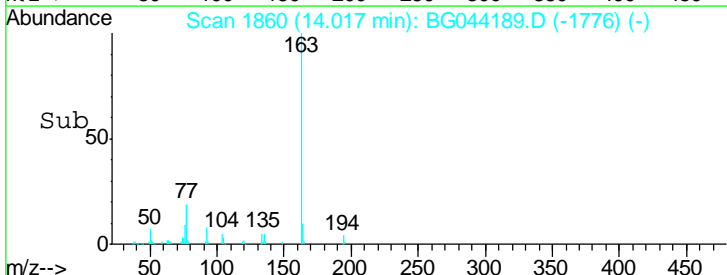
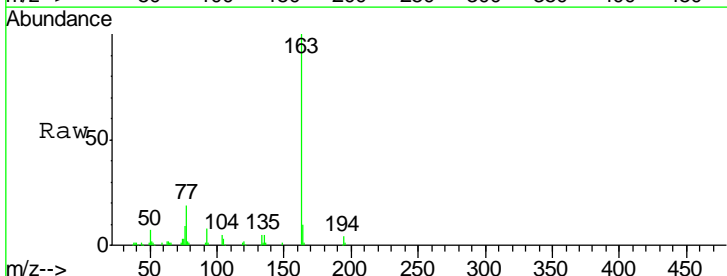
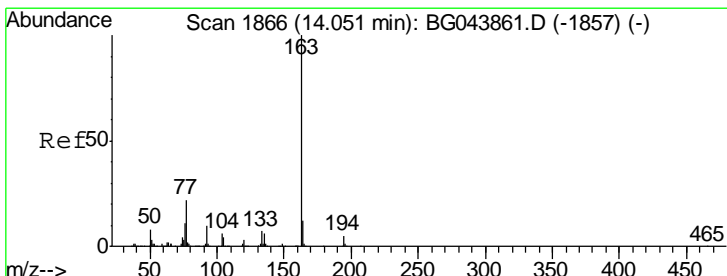
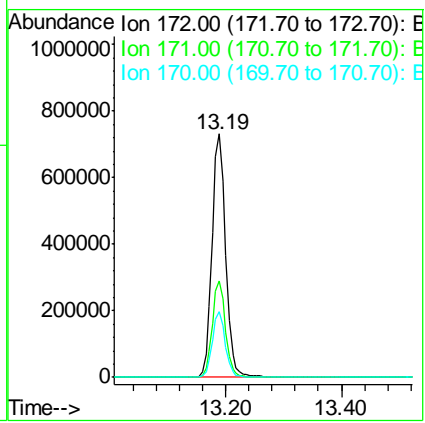


#45
 2-Fluorobiphenyl
 Concen: 92.062 ng
 RT: 13.19 min Scan# 1719
 Delta R.T. -0.03 min
 Lab File: BG044189.D
 Acq: 24 Jan 2020 19:44

Instrument :
 BNA_G
 ClientSampled :
 TP-4-5-COMP

Tgt Ion:172 Resp: 1211260

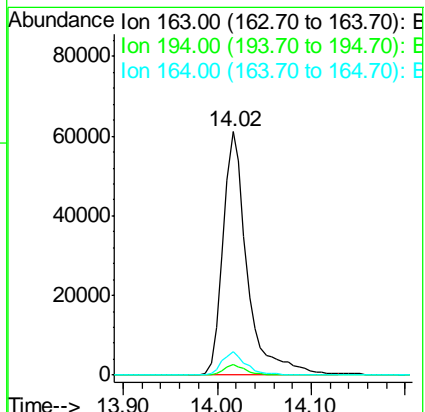
Ion	Ratio	Lower	Upper
172	100		
171	39.6	35.8	53.8
170	27.1	24.2	36.4

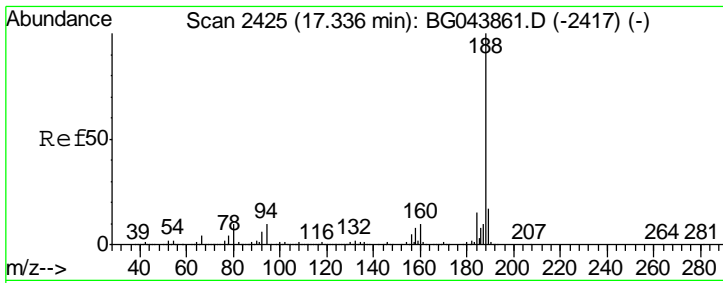


#50
 Dimethylphthalate
 Concen: 6.500 ng
 RT: 14.02 min Scan# 1860
 Delta R.T. -0.03 min
 Lab File: BG044189.D
 Acq: 24 Jan 2020 19:44

Tgt Ion:163 Resp: 110014

Ion	Ratio	Lower	Upper
163	100		
194	4.2	3.7	5.5
164	9.9	9.3	13.9

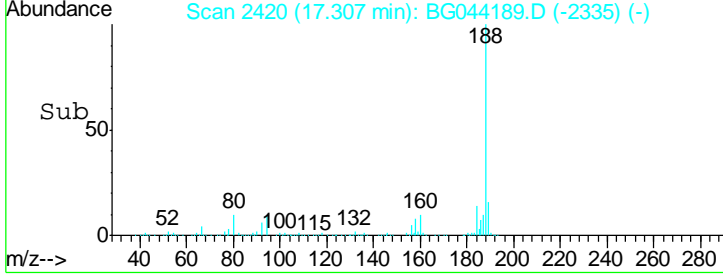
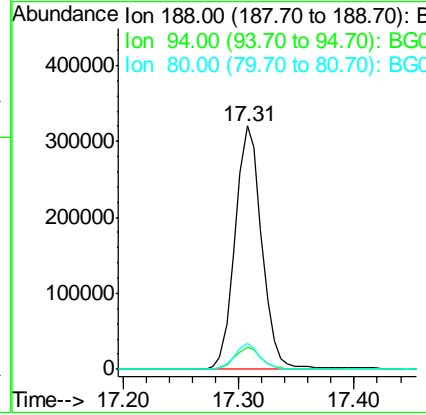
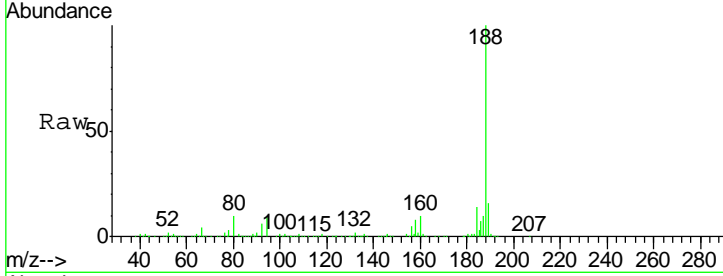




#64
 Phenanthrene-d10
 Concen: 20.000 ng
 RT: 17.31 min Scan# 2420
 Delta R.T. -0.03 min
 Lab File: BG044189.D
 Acq: 24 Jan 2020 19:44

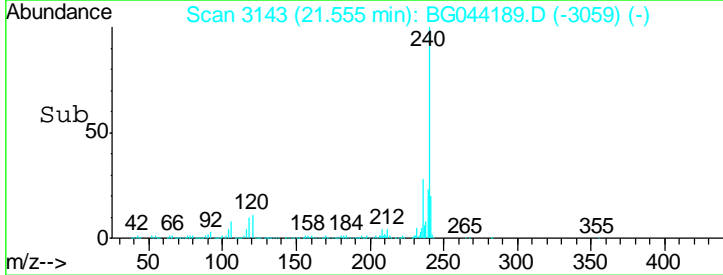
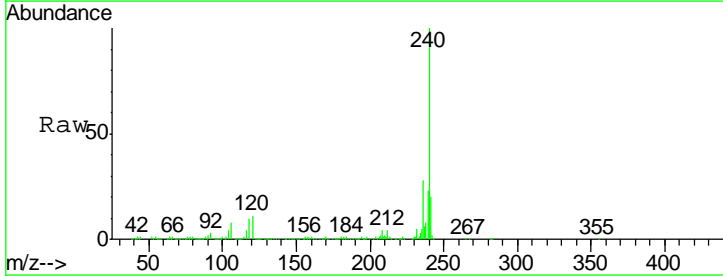
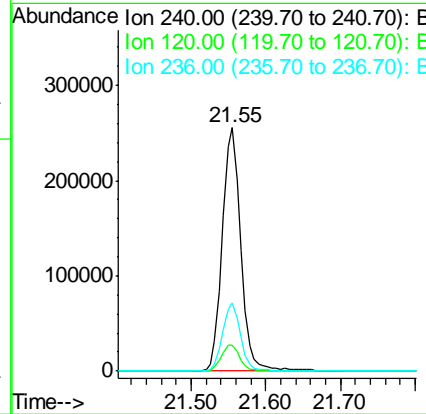
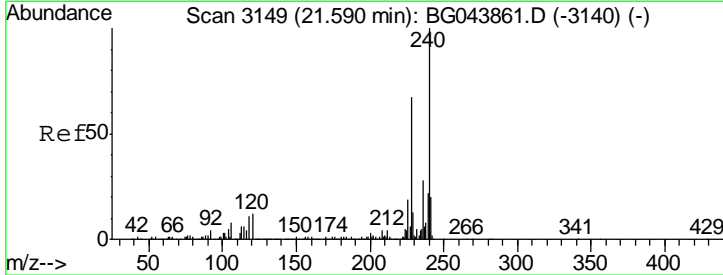
Instrument :
 BNA_G
 ClientSampled :
 TP-4-5-COMP

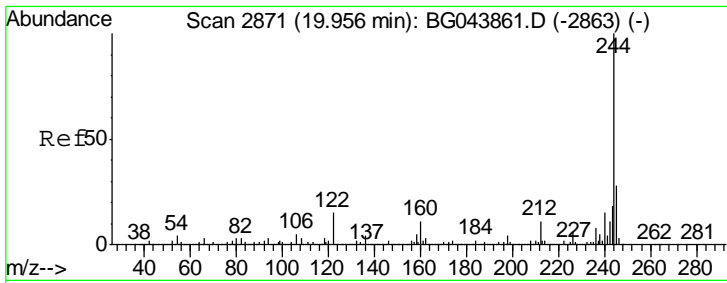
Tgt Ion	Resp	Lower	Upper
188	512049		
94	9.3	7.9	11.9
80	10.5	8.2	12.4



#76
 Chrysene-d12
 Concen: 20.000 ng
 RT: 21.55 min Scan# 3143
 Delta R.T. -0.03 min
 Lab File: BG044189.D
 Acq: 24 Jan 2020 19:44

Tgt Ion	Resp	Lower	Upper
240	440751		
120	10.5	9.6	14.4
236	27.8	22.2	33.2

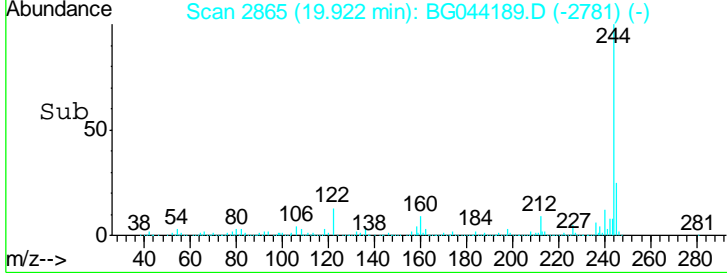
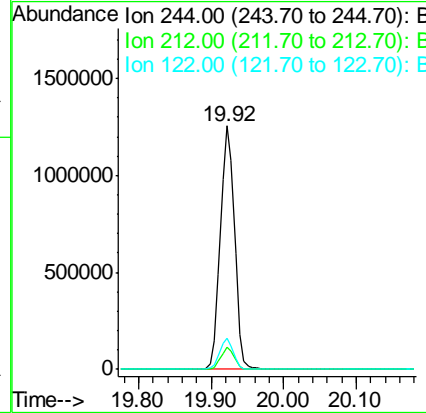
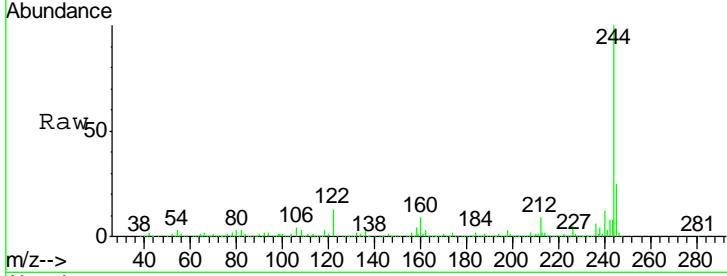




#79
 Terphenyl-d14
 Concen: 97.707 ng
 RT: 19.92 min Scan# 2865
 Delta R.T. -0.03 min
 Lab File: BG044189.D
 Acq: 24 Jan 2020 19:44

Instrument :
 BNA_G
ClientSampled :
 TP-4-5-COMP

Tgt Ion	Resp	Lower	Upper
244	1718941		
212	9.0	8.6	13.0
122	12.7	11.9	17.9



#87
 Perylene-d12
 Concen: 20.000 ng
 RT: 24.66 min Scan# 3671
 Delta R.T. -0.06 min
 Lab File: BG044189.D
 Acq: 24 Jan 2020 19:44

Tgt Ion	Resp	Lower	Upper
264	490349		
260	24.2	20.4	30.6
265	21.0	17.4	26.2

